

AUTOMATIC TRANSFER SWITCH SCHEDULE

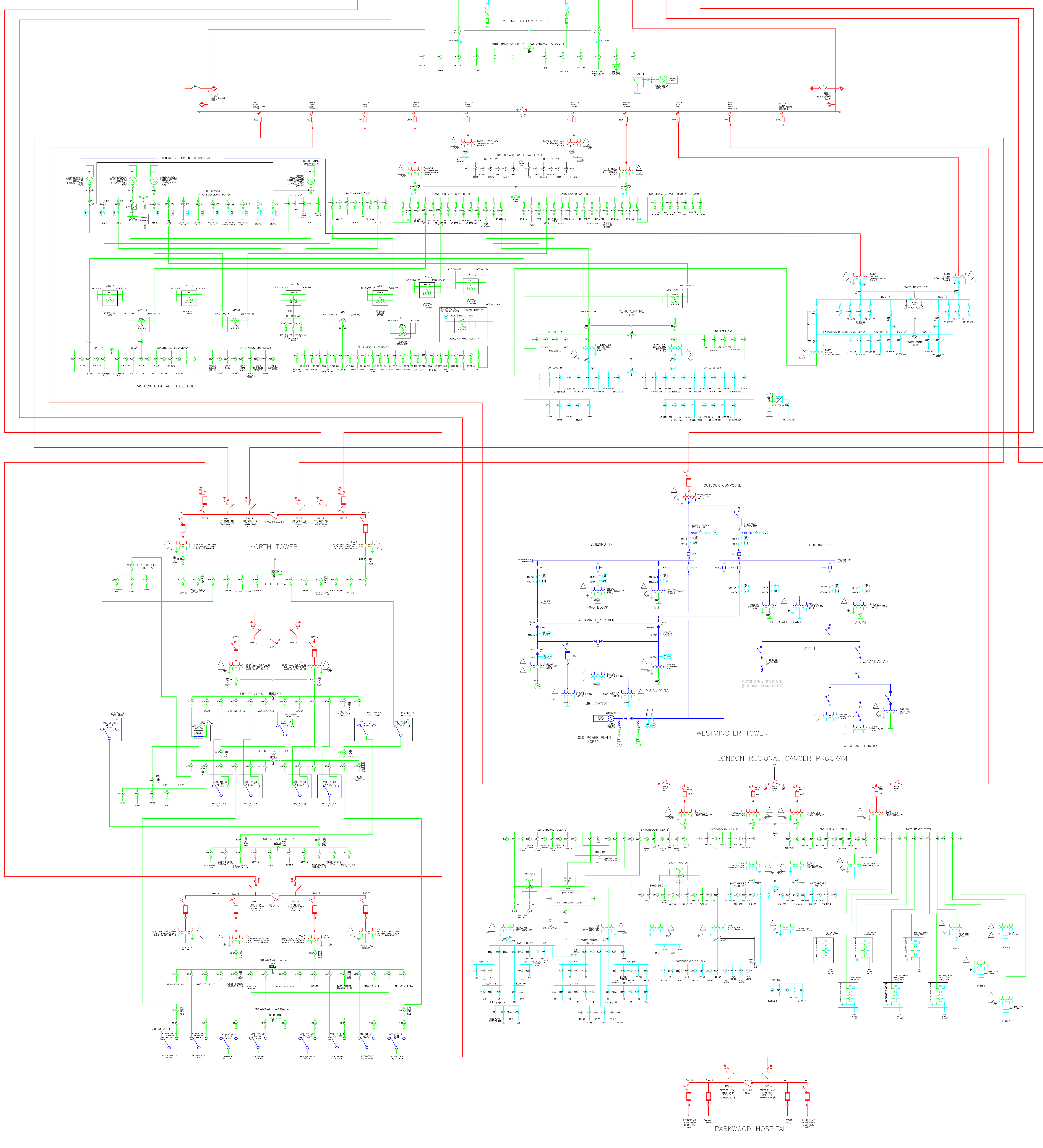
NT L3 DE 2	28	600	800	58	NT L3 1A	DP L VEA1	DP NT L3 DEAT
NT L3 DE 9	28	600	1000	58	NT L3 1A	DP L VEA1	DP NT L3 DE 1A
NT L3 DE 10	28	600	1000	58	NT L3 1A	DP L VEA1	DP NT L3 DE 1A
NT L3 DE M14	28	600	400	58	NT L3 1A	DP L VEA1	DP NT L3 DE 1A
NT L3 DE M15	28	600	400	58	NT L3 1A	DP L VEA1	DP NT L3 DE 1A
NT L3 DE M16	28	600	400	58	NT L3 1A	DP L VEA1	DP NT L3 DE 1A
NT L3 VE 11	28	600	400	58	NT L3 1A	DP L VEA1	DP NT L3 VE 1A
NT L3 VE 12	28	600	400	58	NT L3 1A	DP L VEA1	DP NT L3 VE 1A
NT L11 C21	28	600	400	58	NT L11 1A	DP L VEA1	DP NT L11 DE 1A
NT L11 C22	28	600	400	58	NT L11 1A	DP L VEA1	DP NT L11 DE 1A
NT L11 C23	28	600	300	58	NT L11 1A	DP L VEA1	DP NT L11 DE 1A
NT L11 C24	28	600	300	58	NT L11 1A	DP L VEA1	DP NT L11 DE 1A
NT L11 C25	28	600	300	58	NT L11 1A	DP L VEA1	DP NT L11 DE 1A
NT L11 DE M19	28	600	400	58	NT L11 1A	DP L VEA1	DP NT L11 DE 1A
NT L11 DE M19	28	600	400	58	NT L11 1A	DP L VEA1	DP NT L11 DE 1A
NT L11 DE M20	28	600	400	58	NT L11 1A	DP L VEA1	DP NT L11 DE 1A
NT L11 DE M20	28	600	400	58	NT L11 1A	DP L VEA1	DP NT L11 DE 1A
ATS 1	28	600	1000	58	NT L3 1A	DP L VEA1	DP NT L3 DE 1A
ATS 2	28	600	400	58	NT L3 1A	DP L VEA1	DP NT L3 DE 1A
ATS 3	28	600	400	58	NT L3 1A	DP L VEA1	DP NT L3 DE 1A
ATS 4	28	600	400	58	NT L3 1A	DP L VEA1	DP NT L3 DE 1A
ATS 5	28	600	400	58	NT L3 1A	DP L VEA1	DP NT L3 DE 1A
ATS 6	28	600	400	58	NT L3 1A	DP L VEA1	DP NT L3 DE 1A
ATS 7	28	600	400	58	NT L3 1A	DP L VEA1	DP NT L3 DE 1A
ATS 8	28	600	400	58	NT L3 1A	DP L VEA1	DP NT L3 DE 1A
ATS 9	28	600	400	58	NT L3 1A	DP L VEA1	DP NT L3 DE 1A
ATS 10	28	600	400	58	NT L3 1A	DP L VEA1	DP NT L3 DE 1A
ATS 11	28	600	400	58	NT L3 1A	DP L VEA1	DP NT L3 DE 1A
ATS 12	28	600	400	58	NT L3 1A	DP L VEA1	DP NT L3 DE 1A
ATS 13	28	600	400	58	NT L3 1A	DP L VEA1	DP NT L3 DE 1A
ATS 14	28	600	400	58	NT L3 1A	DP L VEA1	DP NT L3 DE 1A
ATS 15	28	600	400	58	NT L3 1A	DP L VEA1	DP NT L3 DE 1A

AUTOMATIC TRANSFER SWITCH SCHEDULE LRCP

ATS C01	27	600	600	05A 1	DP L VEA1	DP L VEA1	DP L VEA1
ATS C02	27	600	600	05A 2	DP L VEA1	DP L VEA1	DP L VEA1
ATS C03	27	600	100	05A 3	DP L VEA1	DP L VEA1	DP L VEA1
ATS C04	27	600	400	05A 4	DP L VEA1	DP L VEA1	DP L VEA1

SYMBOLS

	PHASE OUTPUT
	BREAKER
	BUSBAR
	CABLE
	TRANSFORMER
	MOTOR
	GENERATOR
	CAPACITOR
	INDUCTOR
	RELAY
	SWITCH
	LAMP
	DIODE
	TRIAC
	THYRISTOR
	SCR
	IGBT
	MOSFET
	BJT
	FET
	PNP
	NPN
	DIODE BRIDGE
	RECTIFIER
	INVERTER
	CONVERTER
	AMPLIFIER
	OSCILLATOR
	FILTER
	RESISTOR
	CAPACITOR BANK
	INDUCTOR BANK
	TRANSFORMER BANK
	MOTOR BANK
	GENERATOR BANK
	CAPACITOR BANK (ENERGY STORAGE)
	INDUCTOR BANK (ENERGY STORAGE)
	TRANSFORMER BANK (ENERGY STORAGE)
	MOTOR BANK (ENERGY STORAGE)
	GENERATOR BANK (ENERGY STORAGE)
	CAPACITOR BANK (POWER FACTOR CORRECTION)
	INDUCTOR BANK (POWER FACTOR CORRECTION)
	TRANSFORMER BANK (POWER FACTOR CORRECTION)
	MOTOR BANK (POWER FACTOR CORRECTION)
	GENERATOR BANK (POWER FACTOR CORRECTION)
	CAPACITOR BANK (VOLTAGE REGULATION)
	INDUCTOR BANK (VOLTAGE REGULATION)
	TRANSFORMER BANK (VOLTAGE REGULATION)
	MOTOR BANK (VOLTAGE REGULATION)
	GENERATOR BANK (VOLTAGE REGULATION)
	CAPACITOR BANK (HARMONIC FILTERING)
	INDUCTOR BANK (HARMONIC FILTERING)
	TRANSFORMER BANK (HARMONIC FILTERING)
	MOTOR BANK (HARMONIC FILTERING)
	GENERATOR BANK (HARMONIC FILTERING)
	CAPACITOR BANK (SURGE PROTECTION)
	INDUCTOR BANK (SURGE PROTECTION)
	TRANSFORMER BANK (SURGE PROTECTION)
	MOTOR BANK (SURGE PROTECTION)
	GENERATOR BANK (SURGE PROTECTION)



LHSC HTMS
VH-12668
Facilities Planning

Rev	Description	Date	By	App
1	ELEC. SERVICE REVISIONS	07-05-26	R.S.	
2	ELEC. SERVICE REVISIONS	09-03-03	R.S.	
3	ELEC. SERVICE REVISIONS	09-04-22	R.S.	
4	ELEC. SERVICE REVISIONS	10-01-13	R.S.	
5	ELEC. SERVICE REVISIONS	11-01-14	R.S.	

London Health Sciences Centre
Facilities Planning and Development

VICTORIA HOSPITAL
UNIVERSITY HOSPITAL
SOUTH STREET HOSPITAL

800 COMMISSIONERS ROAD EAST
LONDON, ON N6A 4G5
TEL: (519) 526-8500 x 55024
FAX: (519) 526-8159

VICTORIA HOSPITAL

Single Line Riser Diagram
Victoria Hospital

Drawn By: R. SMITH
Checked By: R. SMITH
Date: 2009/05/17
Scale: N.T.S.

VH-RISER-DIA.DWG
VICTORIA HOSPITAL

VH-SITE-E5-1