

Toronto Hydro-Electric System Limited
14 Carlton St. Telephone: 416.542.2517
Toronto, Ontario Facsimile: 416.542.2776
M5B 1K5 gwinn@torontohydro.com



June 4, 2009

Via RESS e-filing – signed original to follow by mail

Ms. Kirsten Walli, Board Secretary
Ontario Energy Board
PO Box 2319
2300 Yonge St, 27th floor
Toronto, ON M4P 1E4

Dear Ms. Walli:

**Re: Toronto Hydro-Electric System Limited's
Application for Approval and Recovery of Amounts
Related to CDM Activities in 2009 Rates
OEB File No. EB-2008-0401**

Toronto Hydro-Electric System Limited hereby submits its response to interrogatories from Energy Probe, Pollution Probe, School Energy Coalition, and Vulnerable Energy Consumers Coalition. The requisite two paper copies are enclosed.

Please contact me at 416-542-2517 or at regulatoryaffairs@torontohydro.com for any inquiries or comments on this matter.

Sincerely,

[original signed by]

Glen Winn, Manager
Regulatory Applications & Compliance

encl.

cc: All Intervenors on Record for EB-2008-0401, via electronic mail only

RESPONSES TO ENERGY PROBE RESEARCH FOUNDATION INTERROGATORIES

1 **INTERROGATORY 1:**

2 **Reference(s):** Manager's Summary, Schedule 1.1, p. 2

3 Manager's Summary, Schedule 2.1, p. 3

4 *"The requested LRAM relief is composed of the 2007 calendar year savings resulting*
5 *from:*

- 6 1. *Third Tranche CDM programs implemented in 2005 and 2006;*
7 2. *New Third Tranche CDM programs implemented in 2007;*
8 3. *Ontario Power Authority ("OPA") CDM programs implemented in 2007.*

9 ...

10 *"THESL also intends to request LRAM for savings related to OPA programs*
11 *implemented by third parties within THESL's service territory. This LRAM component,*
12 *however, is not part of this application, and THESL intends to file for its recovery at a*
13 *later date."*

14

15 a) Were the aforementioned "Ontario Power Authority ("OPA") CDM programs

16 implemented in 2007" funded by OPA but carried out by THESL? If not, please

17 explain.

18 b) We understand the purpose of the LRAM is to eliminate a perverse incentive, when a

19 utility company's revenues would be negatively affected by the successful

20 accomplishment of its own conservation initiatives. If these particular activities were

21 initiatives of OPA and not THESL, please explain how they conform to the general

22 purpose of an LRAM, and/or please document an OEB decision that specifically

23 authorizes their inclusion in an LRAM.

RESPONSES TO ENERGY PROBE RESEARCH FOUNDATION INTERROGATORIES

- 1 c) Please confirm that THESL does not believe that other unforecasted conservation or
2 demand-reducing activities in its franchise should also be addressed with an LRAM,
3 e.g.,:
- 4 • efficiency improvements accomplished by THESL customers without any
5 incentives;
 - 6 • efficiency improvements accomplished by THESL customers in response to
7 government incentives like EcoEnergy;
 - 8 • efficiency improvements accomplished by THESL customers in response to
9 government regulations, like changes to the Building Code or improvements
10 in minimum appliance standards; and,
 - 11 • decreases in consumption in response to market changes, like the current
12 recession.

13

RESPONSE:

- 15 a) Yes, the OPA CDM programs implemented in 2007 for which THESL has applied for
16 LRAM as part of this application were funded through the OPA and delivered
17 exclusively by THESL. This LRAM component does not include any OPA programs
18 implemented in 2007 within THESL's service territory by parties other than THESL.

19

RESPONSES TO ENERGY PROBE RESEARCH FOUNDATION INTERROGATORIES

- 1 b) The programs are initiatives of THESL, not the OPA, and as such qualify for LRAM
2 treatment under the OEB's Guidelines for CDM (EB-2008-0037).
3
- 4 c) THESL has not applied for LRAM recovery for any programs run by third parties
5 inside its service territory through this application. However, as a matter of policy,
6 THESL distinguishes between autonomous (naturally occurring) conservation
7 programs, which would be included as part of a utility's annual load forecast, and
8 those implemented by policy or government mandate. THESL believes that there is
9 no reasonable policy basis to allow utilities to recover LRAM resulting from
10 variances in forecast program performance caused by utility run CDM programs, but
11 deny load reductions caused by government or ratepayer funded CDM programs run
12 by other parties within its service territory.

RESPONSES TO ENERGY PROBE RESEARCH FOUNDATION INTERROGATORIES

1 **INTERROGATORY 2:**

2 **Reference(s):** Exhibit 1, p. 7

3

4 Please produce the relevant portion of the study referenced in footnote 10, which is cited
5 as the basis for using a higher value than the OEB's for demand saving in Residential and
6 Commercial Load Control.

7

8 **RESPONSE:**

9 Please refer to the slide entitled "DLC Providers as of May 2007" found on page 6 of Tab
10 1, Schedule A, the presentation from Lawrence Berkeley National Laboratory. The cited
11 average gross unit load impact of 0.72 kW and 1.19 kW is shown in the 5th row of the
12 table.

Regional Approaches to Monitoring and Verification of Load Management Programs

Grayson Heffner
MADRI Meeting
May 14, 2007

- Introductions
 - Analysis Team
 - Participants in the Collaborative Effort
- Impetus for the Project
- Synopsis and Timeline
- PJM-Wide Model for Estimating Air Conditioner and Water Heater Direct Load Control Impacts
 - Analysis Approach
 - Air Conditioner Savings Estimates
 - Water Heater Savings Estimates
- Next Steps and Future Applicability

- Analysis team
 - Curt Puckett and Tim Hennessy of RLW
 - Grayson Heffner and Chuck Goldman of LBNL
- Collaborative participants who donated historical data
 - Mary Straub and Cheryl Hinds, BGE
 - Steve Sunderhauf and Will Lowe, Pepco
 - Fred Lynk and Mike Prendergast, PSE&G
 - Chris Siebens, First Energy/JCP&L
- Additional collaborative participants
 - Craig Grooms of Buckeye Power
 - Erin Puryear of Old Dominion Electric Coop
 - Eugene Bradford of SW Maryland Electric Coop
 - Phil Cervený of Continental Cooperative Services
- PJM leadership and continuity
 - John Reynolds

- ❑ Old School: PURPA-compliant load research-based M&V for all Direct Load Control programs
 - Minimum accuracy of 90% confidence with 10% error.
 - Separate studies of Gross Impacts and Operability Rate
 - Studies must present per-participant impacts in a matrix of hours, PJM Zone, and weather condition

- ❑ Issues associated with the conventional M&V approach:
 - PURPA-compliant Load Research is way too expensive!
 - Every five-years, a \$250,000 load research bill
 - M&V costs can significantly affect cost-effectiveness
 - Previous load research studies yielded comparable per-participant load impacts for similar conditions (e.g., control strategy, time of day, weather) across PJM
 - Assuming technology does not change, it shouldn't be necessary to constantly re-estimate a known quantity – the gross load impact of AC or EWH direct load control

- ❑ New School: Pooled Load Data & Regional Model-based Analysis, adjusted to reflect program-specific characteristics
 - Leverage data from individual load research studies to support regional, pooled analysis
 - Program-specific studies of switch failures & radio coverage to de-rate load impacts
 - New small customer programs could utilize a pooled approach to meeting M&V requirements, thus improving results and saving on program costs

Approach Agreed for Modifying ALM M&V Requirements



- DLC providers collaborate in developing a PJM-wide “deemed savings model” for air conditioner and water heater load control
- The deemed savings model would reflect pertinent variables (weather, customer size, zone) to “customize” the savings estimates
- If successful, other PJM members lacking PURPA-compliant M&V studies could qualify for ALM capacity credits or payments based on the regional deemed savings estimates
- In future, DR providers targeting small customers should be encouraged to field regional load research studies for new programs with emerging technologies

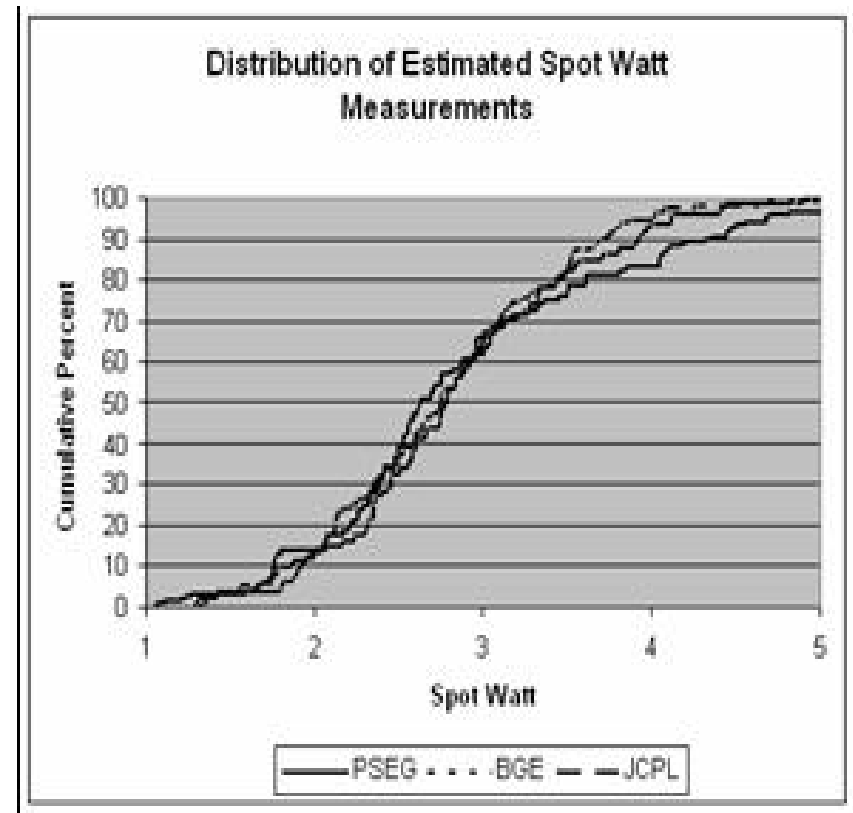
DLC Providers as of May 2007

Distributor	PSE&G	First Energy/JCP&L	BGE
Program Name	Cool Customer	PowerPlus Savers	Riders 5 & 6
Control Points	138,000 AC Switches	78,000 AC Switches & Smart Stats	237,000 AC Switches 74,000 EWH Switches
PJM Capacity Credit	128 MW	56 MW	210 MW
Gross Unit load impact	1.19 kW	0.72 kW	0.94 kW (AC) 0.24 kW (EWH)
Year Started	1990	1991	1988
Program Status	Closed to new customers	Closed to new customers	Closed to new customers
Cycling Limits	Up to 15 per year	Up to 20 per year	No limit (AC) 15 per year (EWH)

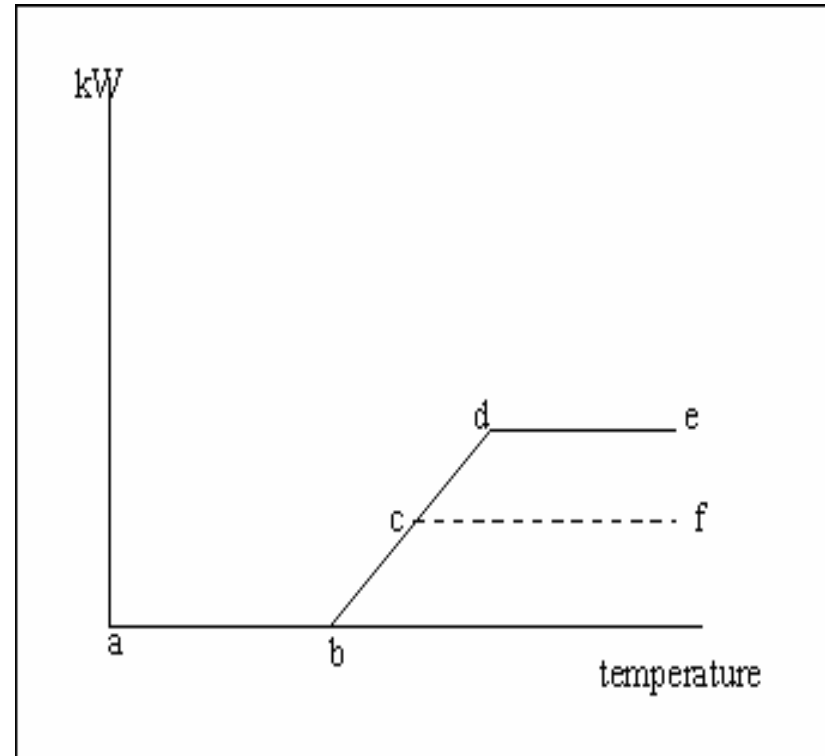
1. Obtain end use monitored loads
2. Estimate connected load (spot watts)
3. Estimate interval savings for each sample customer
4. Combine weather data with savings estimates
5. Estimate average savings for each time of day interval for each THI
6. Develop models to predict the average savings using WTHI for each time period
7. Produce Deemed Savings Estimates by Time period and WTHI

- End-use metered air conditioning data from First Energy/JCP&L, PSE&G, and BGE
- Electric water heater data from BGE
- Summary impact data on air conditioning and water heating from Pepco

- Model estimation begins with characterizing maximum demand, e.g., “spot watts”
- 99th percentile of observed demands was used as a proxy
- Distribution suggest PSE&G customers may have larger air conditioner maximum demands, e.g. larger units



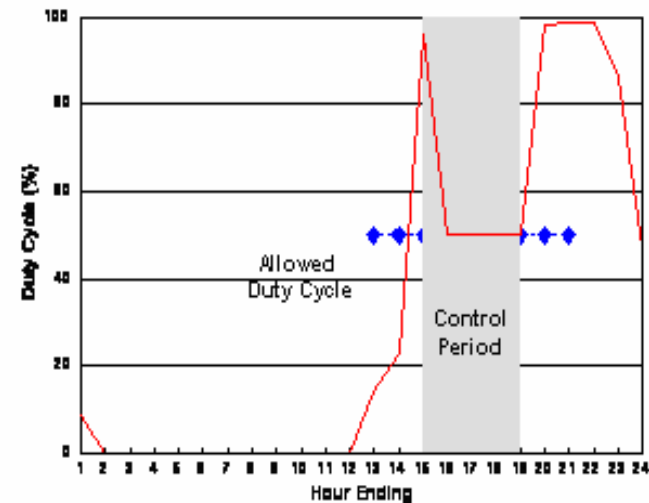
- Duty cycle model used to calculate the effect of control strategy and weather conditions on air conditioner demand
- For example, the effect of 50% load control is to overlay pattern abcf on the normal pattern abcde



- PJM Manual 19 calls for load impacts to be expressed as a function of time interval and temperature-humidity index (THI)
- The temperature-humidity index is then weighted to reflect the impacts of sustained hot weather on air conditioner demand.
- Baltimore-Washington Airport weather data was used for BGE, while Philadelphia Airport weather was used for PSE&G and JCP&L.

- Average savings were calculated by time of day, for each WTHI that was observed during that time of day period, and for each cycling strategy
- A simple regression model was developed to predict savings for each group, for any time period for any cycling strategy
- The slope of the model is the incremental savings per degree of WTHI

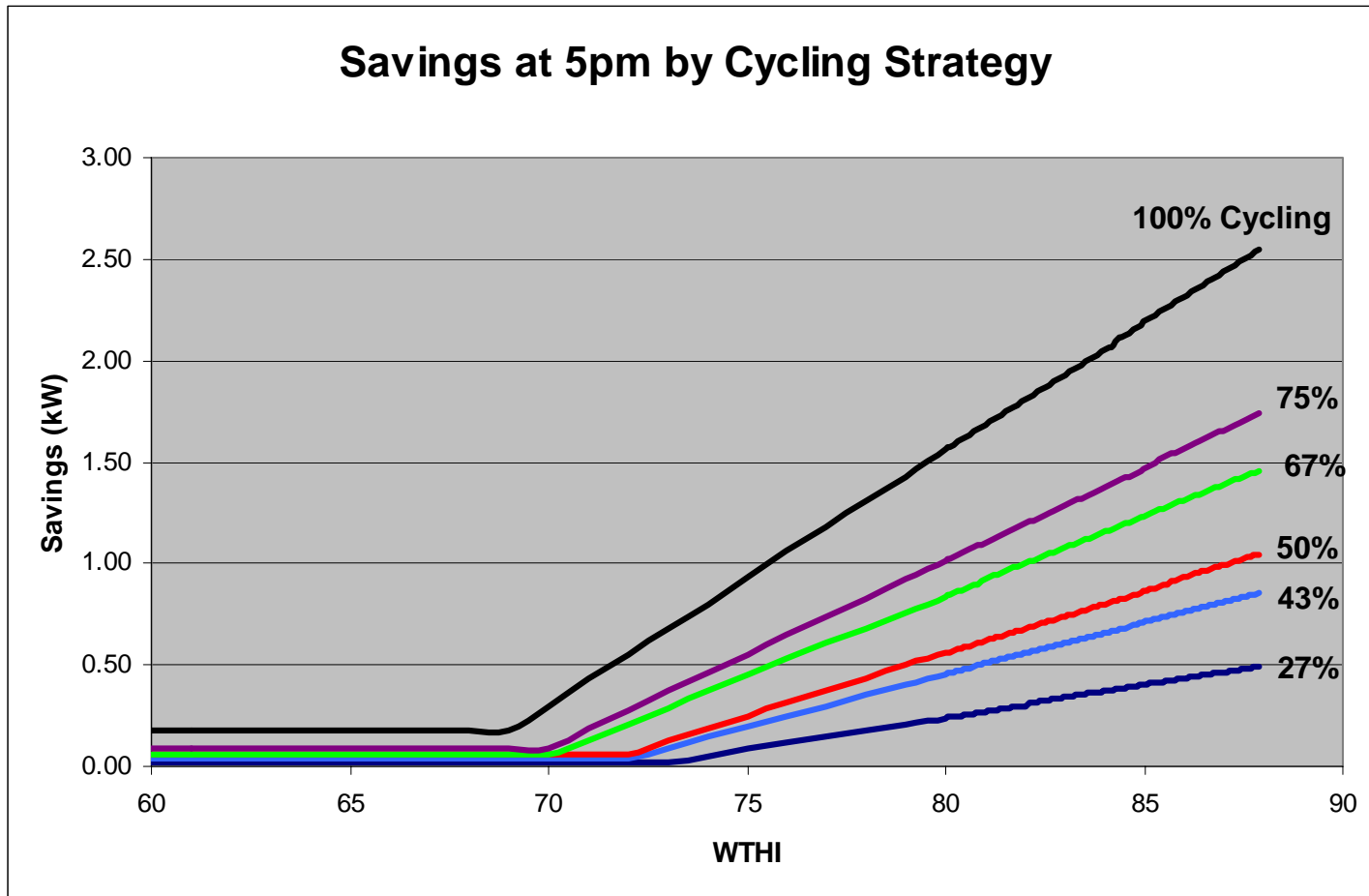
Contributing Participant



Produce Average Deemed Savings Estimates



- Aggregate and stratified average results were developed:
 - Aggregate average across all customers
 - Stratified averages across customer subgroups with maximum demand greater or less than 3.5 kW
 - Stratified averages across customer subgroups with annual air conditioning use greater or less than 1,600 kWh
- The predicted average savings for each time of day period was estimated for each of the WTHI between 70°F to 87°F.



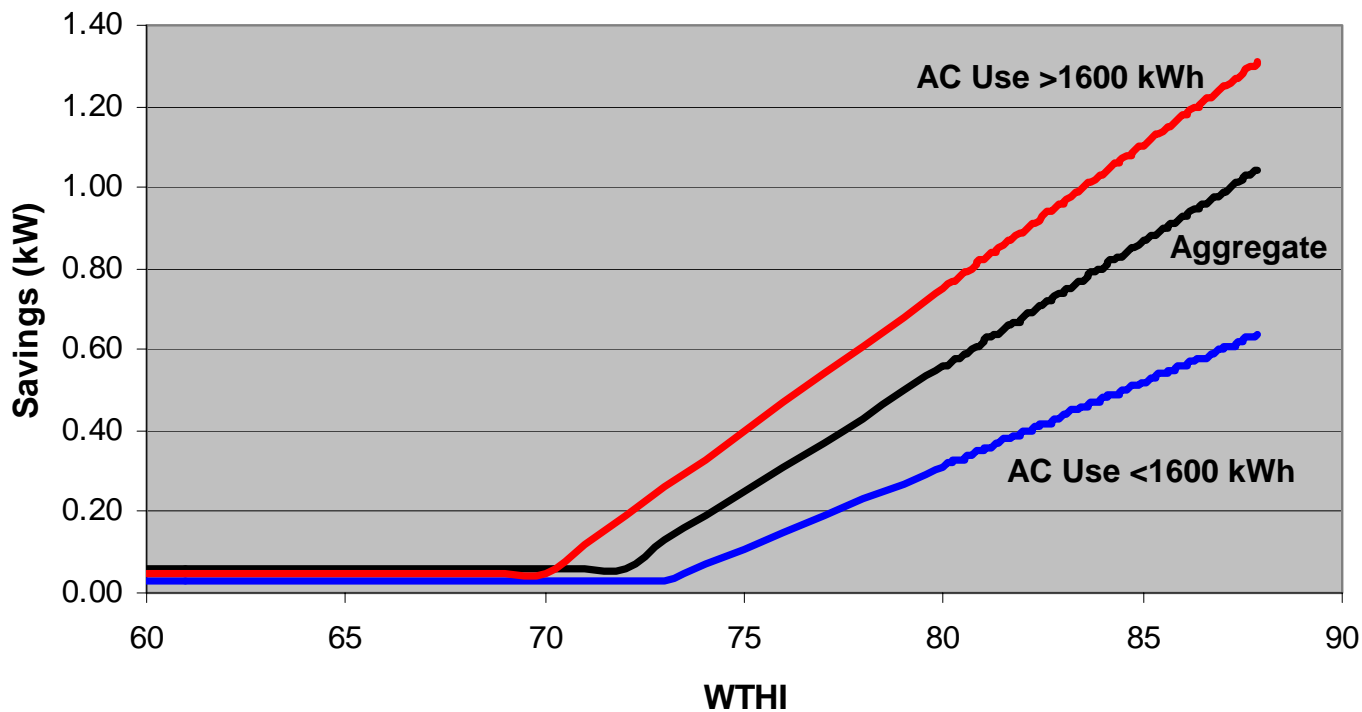


AC Savings Estimates by Usage Strata

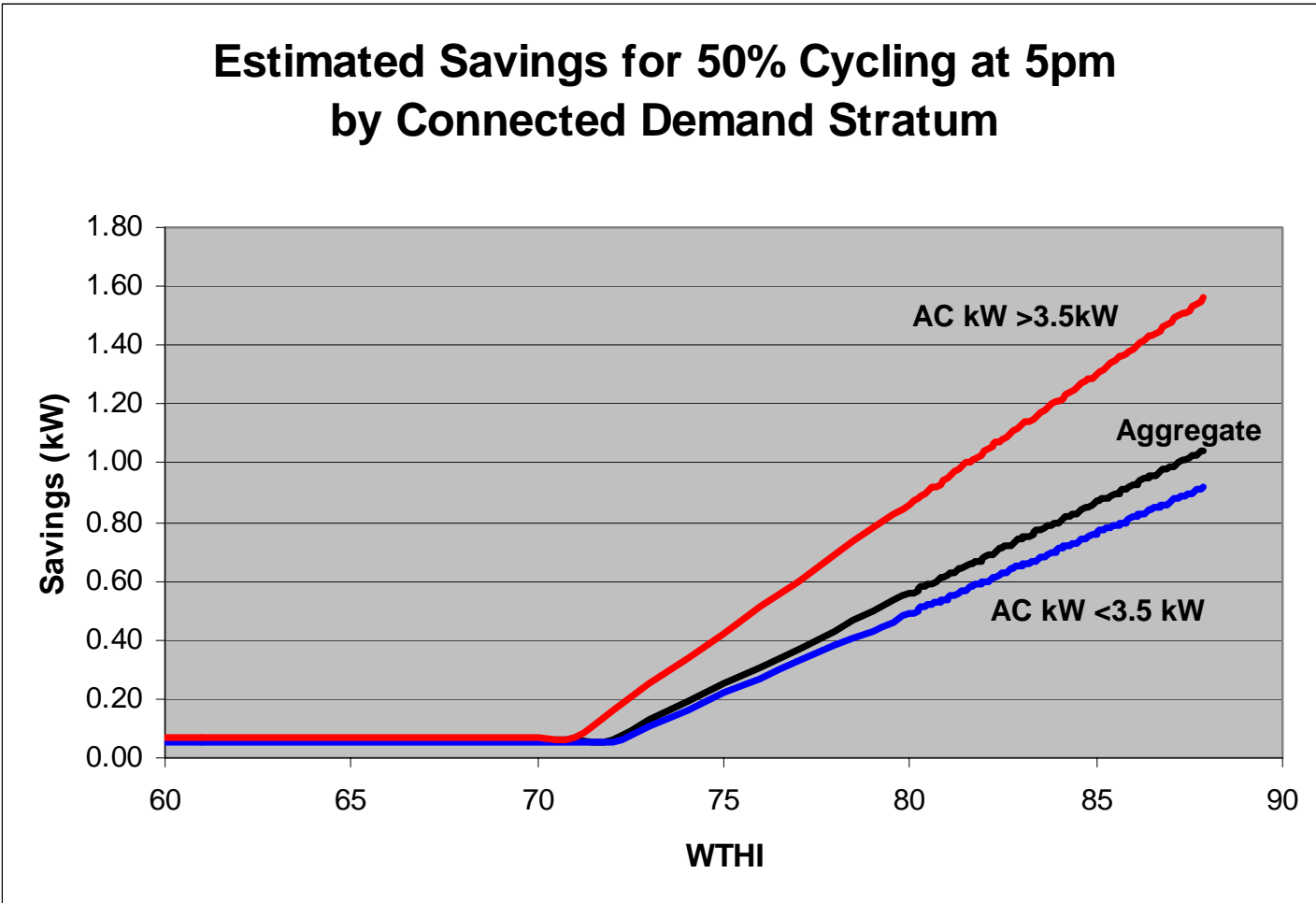
RLW ANALYTICS

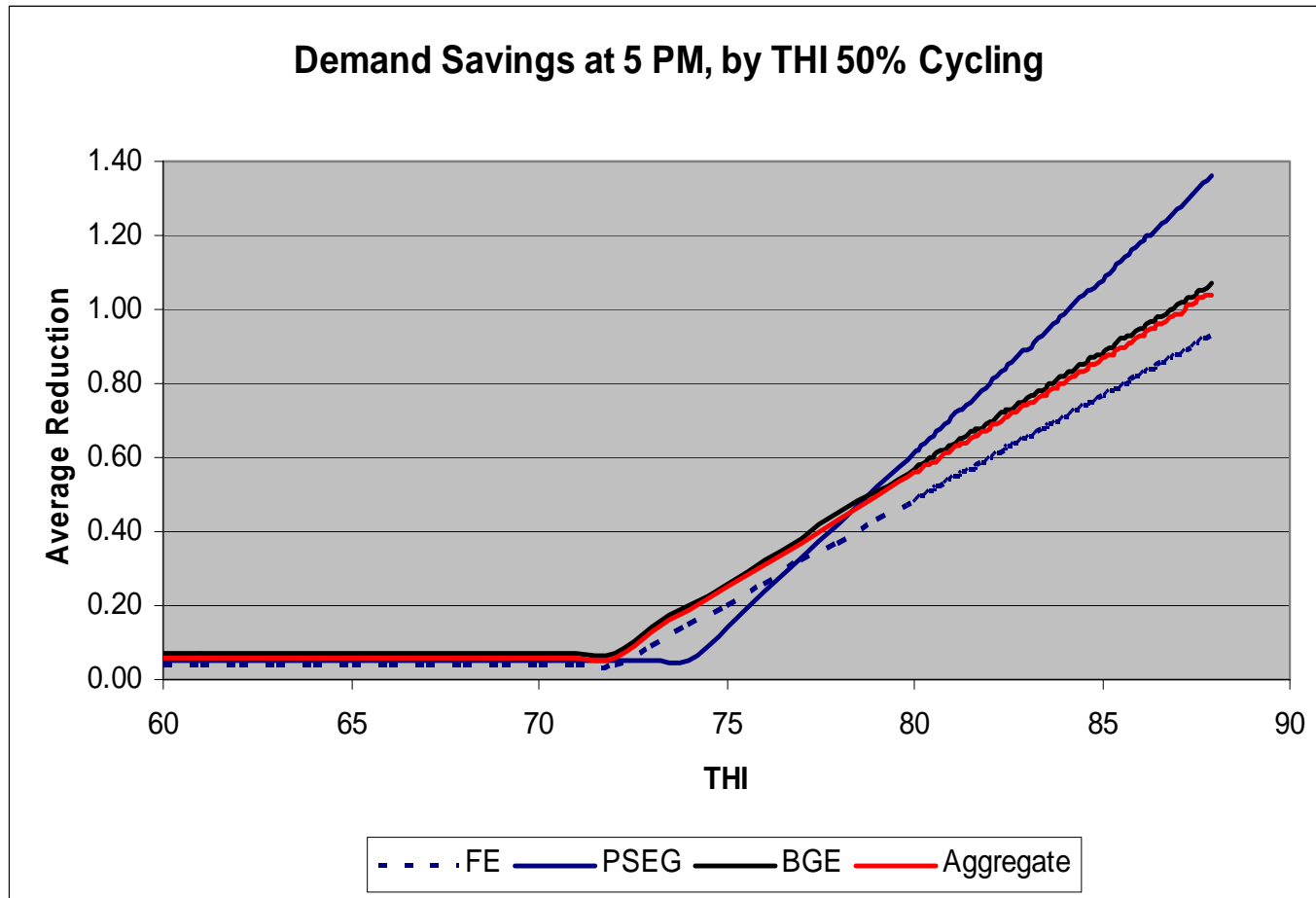


Estimated Savings for 50% Cycling at 5pm by AC Energy Use Stratum

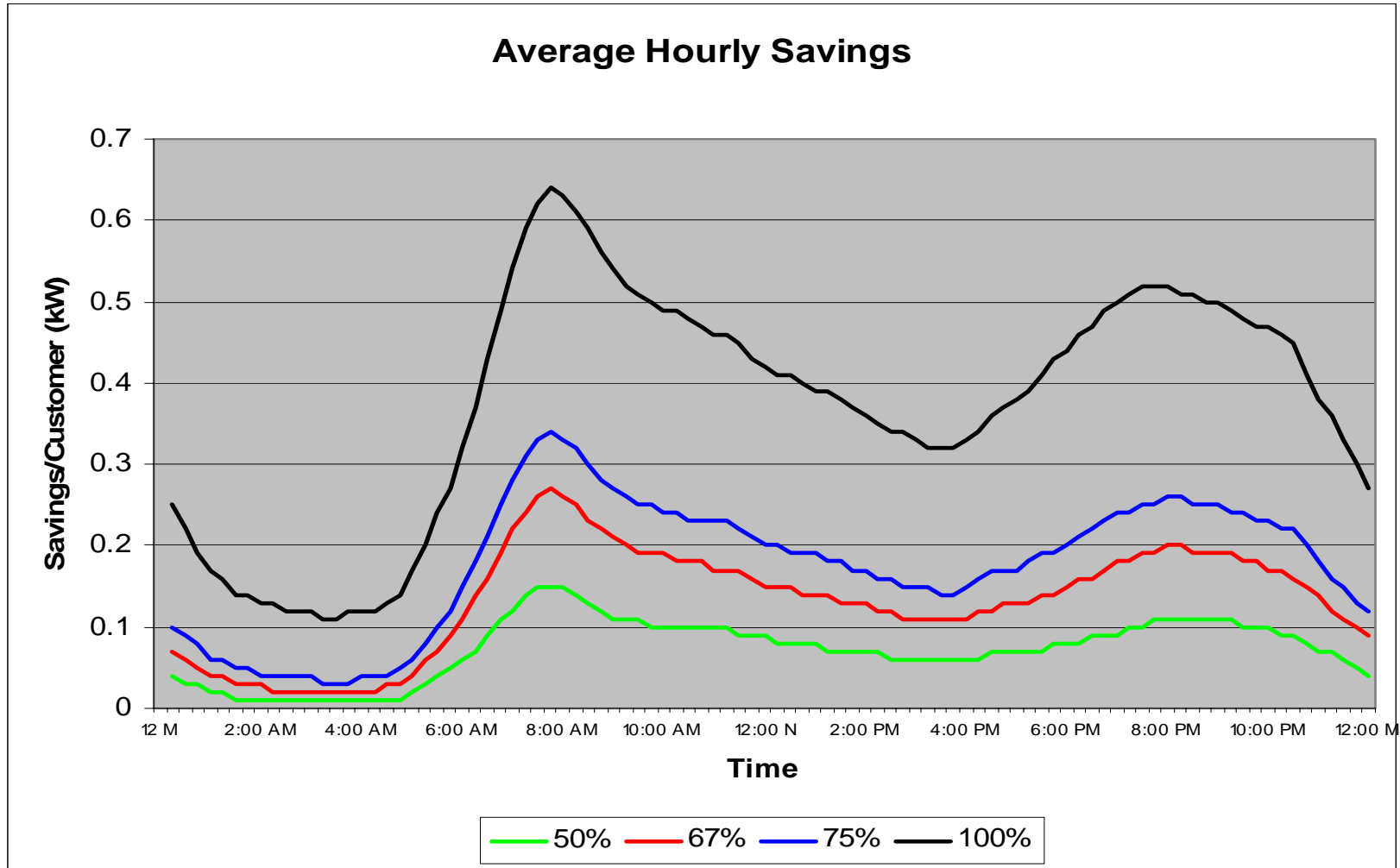


Estimated Savings for 50% Cycling at 5pm by Connected Demand Stratum



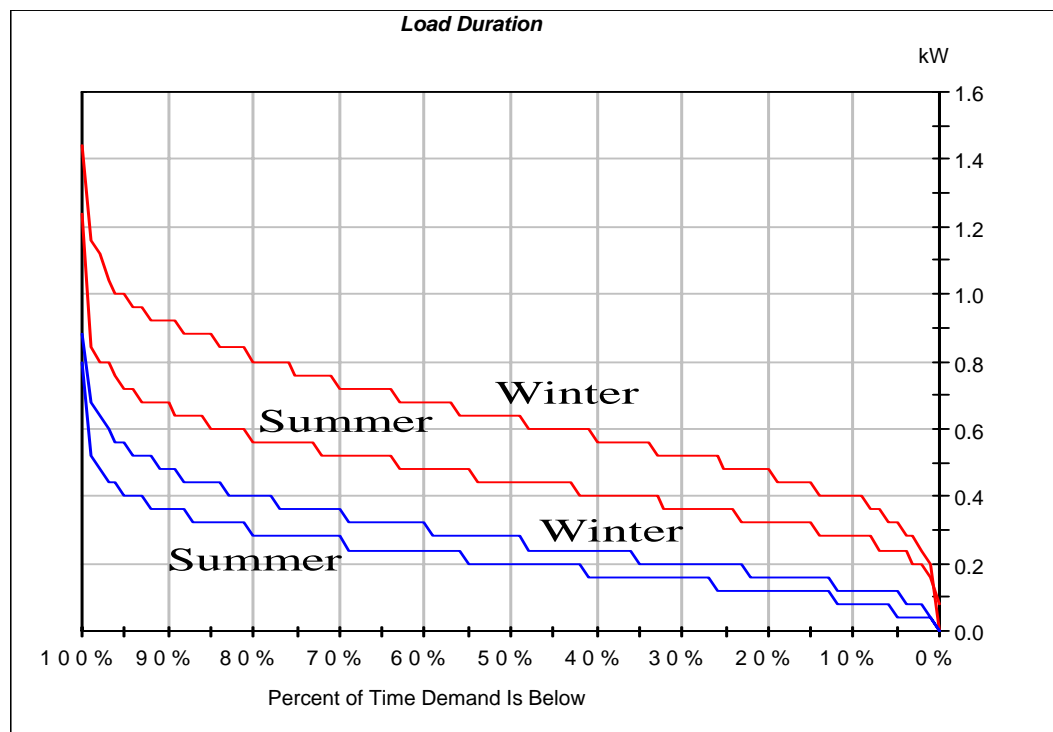


WTHI	Predicted Savings at 5pm For Various Duty Cycle Strategies						
	27%	43%	50%	67%	75%	83%	100%
70.0	0.02	0.04	0.06	0.06	0.09	0.18	0.30
71.0	0.02	0.04	0.06	0.13	0.19	0.28	0.43
72.0	0.02	0.04	0.06	0.21	0.28	0.38	0.55
73.0	0.02	0.09	0.13	0.29	0.37	0.48	0.68
74.0	0.05	0.15	0.19	0.37	0.46	0.58	0.80
75.0	0.09	0.20	0.25	0.45	0.55	0.68	0.93
76.0	0.12	0.25	0.31	0.53	0.65	0.78	1.06
77.0	0.15	0.30	0.37	0.61	0.74	0.87	1.18
78.0	0.18	0.35	0.43	0.68	0.83	0.97	1.31
79.0	0.21	0.40	0.50	0.76	0.92	1.07	1.43
80.0	0.24	0.45	0.56	0.84	1.01	1.17	1.56
81.0	0.27	0.51	0.62	0.92	1.10	1.27	1.68
82.0	0.30	0.56	0.68	1.00	1.20	1.37	1.81
83.0	0.34	0.61	0.74	1.08	1.29	1.47	1.93
84.0	0.37	0.66	0.80	1.16	1.38	1.57	2.06
84.1	0.37	0.66	0.81	1.16	1.39	1.58	2.07
84.2	0.37	0.67	0.82	1.17	1.40	1.59	2.08
84.3	0.38	0.67	0.82	1.18	1.41	1.60	2.10
84.4	0.38	0.68	0.83	1.19	1.42	1.61	2.11
84.5	0.38	0.68	0.83	1.20	1.43	1.62	2.12
84.6	0.39	0.69	0.84	1.20	1.43	1.63	2.13
84.7	0.39	0.70	0.85	1.21	1.44	1.64	2.15
84.8	0.39	0.70	0.85	1.22	1.45	1.65	2.16
84.9	0.40	0.71	0.86	1.23	1.46	1.66	2.17
85.0	0.40	0.71	0.87	1.23	1.47	1.67	2.19
86.0	0.43	0.76	0.93	1.31	1.56	1.77	2.31
87.0	0.46	0.81	0.99	1.39	1.65	1.87	2.44





Savings Duration Curve (Hour Ending 7am)



— AE: Weekends 7am
— AF: Weekdays 7am

- Deemed savings estimates are incorporated in PJM Manual 19, effective June 1 2007
- Potential DLC providers in PJM are now be able to certify their air conditioner and water heater load impacts without the expense of a PURPA-compliant load study
- Regional approaches to M&V could apply to new load management programs
- For example, a PURPA-compliant load research sample for “next generation” DLC or “smart thermostat” programs could be drawn on a regional basis and stratified by PJM zone and consumption.
- Such an approach might help resolve retail-wholesale seams issues, perhaps even providing a permanent load research function capable of providing real-time aggregate load reduction data for system operators

RESPONSES TO POLLUTION PROBE INTERROGATORIES

1 **INTERROGATORY 1:**

2 **Reference(s):** Exhibit 1, SeeLine Group Ltd. Review, pages 6 and 7

3 Please state the 2007 demand savings estimates used by Toronto Hydro to calculate the
4 TRC savings, LRAM, and SSM values for:

- 5 a) its residential *peaksaver* programme; and
6 b) its commercial *peaksaver* programme.

7 Please provide these estimates on a per participant basis.

8

9 **RESPONSE:**

10 In calculating TRC benefits and SSM amounts for *peaksaver*, THESL used 1.1 kW per
11 participant for its 2007 residential *peaksaver* program and 4.1 kW per participant for its
12 2007 commercial *peaksaver* program, which is consistent with demand savings
13 assumptions applied to the 2005 and 2006 *peaksaver* programs. The SSM amounts
14 associated with 2005 and 2006 programs (including *peaksaver* programs) have been
15 approved by the Board in EB-2007-0096.

16

17 THESL is not claiming, and has never claimed LRAM for its *peaksaver* programs.

RESPONSES TO POLLUTION PROBE INTERROGATORIES

1 **INTERROGATORY 2:**

2 **Reference(s):** Exhibit 1, SeeLine Group Ltd. Review, page 6

3 Please state the 2007 free ridership rates used by Toronto Hydro to calculate the TRC
4 savings, LRAM, and SSM values for:

- 5 a) its residential peaksaver programme; and
6 b) its commercial peaksaver programme.

7

8 **RESPONSE:**

9 In calculating TRC benefits and SSM amounts for *peaksaver*, THESL used a zero percent
10 free ridership rate for both the residential *peaksaver* program and commercial *peaksaver*
11 program, which is consistent with the free ridership rate applied to 2005 and 2006
12 *peaksaver* programs. The free rider rate and SSM amount associated with 2005 and 2006
13 programs (including *peaksaver* programs) have been approved by the Board in EB-2007-
14 0096. THESL has never claimed LRAM for its *peaksaver* programs.

RESPONSES TO POLLUTION PROBE INTERROGATORIES

1 **INTERROGATORY 3:**

2 **Reference(s):** Exhibit 1, SeeLine Group Ltd. Review, pages 6 and 7

3 Please provide the 2007 TRC, LRAM, and SSM values for:

4 a) the residential peaksaver programme; and

5 b) the commercial peaksaver programme assuming:

6 i) the OEB-approved free rider rates; and

7 ii) free rider rates of zero its commercial peaksaver programme.

8

9 **RESPONSE:**

10 In calculating TRC benefits and SSM amounts for its *peaksaver* programs, THESL used
 11 a zero percent free ridership rate, which was approved by the OEB in THESL's EB-2007-
 12 0096 application. THESL therefore, continues to use the OEB approved rate of zero
 13 percent. The table below summarizes the TRC benefits and SSM values for THESL's
 14 2007 *peaksaver* programs:

15

Program	OEB Approved Free Ridership	TRC Costs	TRC Benefits	TRC Net Benefits	SSM Amount
Residential peaksaver	0%	\$ (1,453,918)	\$ 6,889,628	\$ 5,435,710	\$ 271,785
Commercial peaksaver	0%	\$ (76,920)	\$ 1,358,587	\$ 1,281,667	\$ 64,083
Total		\$ (1,530,839)	\$ 8,248,215	\$ 6,717,376	\$ 335,869

16

RESPONSES TO SCHOOL ENERGY COALITION INTERROGATORIES

1 **INTERROGATORY 1:**

2 **Reference(s):** Manager's Summary, p. 14

3 With respect to THESL's application to recover an LRAM for programmes undertaken
4 by the Ontario Power Authority, the evidence states "In calculating the LRAM claim for
5 2007 OPA programs, THESL has relied on savings data obtained directly from the OPA,
6 as contained in Exhibit 3. This savings data matches the values used by THESL in
7 calculating the OPA program LRAM component. In the case of some specific programs
8 where THESL felt it had a more accurate estimate of realized savings...THESL used
9 values lower than those reported by the OPA for the calculation of its LRAM claim." [p.
10 14]

- 11 a) Confirm that the above statement means that (for programs other than those where
12 THESL has stated it has used its own savings data) THESL has used program
13 assumptions used by the OPA for free ridership and participation rates.
- 14 b) Please provide details of programs where THESL has used program assumptions
15 or savings data that differ from the OPA.
- 16 c) Please provide a reconciliation showing what the LRAM related to OPA
17 programs would be assuming OPA assumptions were used for all programs.

18

19

RESPONSES TO SCHOOL ENERGY COALITION INTERROGATORIES

1 **RESPONSE:**

2 a) THESL confirms that (for programs other than those where THESL has stated it
3 has used its own savings data) THESL has used program assumptions used by the
4 OPA for free ridership and participation rates.

5
6 b) The table below summarizes the programs where THESL has used savings data
7 that differ from the OPA. As shown in the table, THESL used values lower than
8 those reported by the OPA for the calculation of its LRAM claim.

9

RESPONSES TO SCHOOL ENERGY COALITION INTERROGATORIES

Programs		Savings Data from OPA (Gross)		Savings Data for LRAM (Net)	
		kW	kWh	kW	kWh
Existing Projects (Transition Plan)					
City	Arenas	447	1,787,200	313	729,773
City	Exhibition - Power Gen	100	120,000	70	214,620
City	Exhibition - Buildings	95	379,200	67	265,440
City	Fire Stations	248	991,760	174	565,670
City	LED Traffic Lights	139	1,215,012	97	850,508
City	National Trade Centre	482	1,928,000	337	1,349,600
City	Design Advisory Program	190	760,400	-	-
Enbridge - TAPS		6,633	13,395,887	N/A	6,826,154
Granite Club		213	1,245,380	149	871,766
U of T - St. George		3,113	12,451,600	1,637	1,822,497
Powerwise Business Incentive Program		1,502	6,008,590	1,051	2,362,398
Peaksaver Extension		7,966	-	N/A	-
Design Advisory - Enbridge		4,434	5,122,868	N/A	312,425
TCHC Proj 2		3,262	6,348,453	N/A	1,832,941
THESI Phase 2		664	2,654,960	465	686,762
U of T Scarborough		96	160,000	N/A	53,333
The Indigo		242	968,000	169	282,333
Hospital for Sick Kids		279	1,114,000	195	129,967
Home Depot		4,979	4,868,771	N/A	6,409,668
McDonalds Restaurants		350	1,400,000	245	980,000
Direct Energy - 22 Southport St.		261	1,044,000	204	423,360
Enwave	Queens Park	3,167	7,600,800	2,217	620,732
Enwave	226 King & 200 Wellington	1,667	4,000,800	1,167	849,503
Enwave	390 Bay	735	1,764,000	515	374,556
Enwave	College Park	2,261	5,426,400	1,583	960,171
MSR Inc.		400	-	N/A	-
York University		519	2,076,000	519	363,315
Toronto Western Hospital		166	664,000	116	271,133
Aventis Pasteur		6,000	-	N/A	-
City	ExhibitionPlace	1,609	-	1,126	-
Enwave	John St Pumping Stn	11,000	-	N/A	-
Total for Existing Projects		63,219	85,496,081	12,417	30,408,625
Standard and New Programs					
The Great Refrigerator Roundup		0.3	2,093,000	N/A	853,625
Every Kilowatt Counts		0.8	20,603,000	N/A	3,857,362
Mass Market SLED		1,803	279,390	N/A	265,492
Low Income Program		1,024	2,375,680	N/A	195,948
Business Incentive Program - New		1,312	5,247,998	918	299,803
Summer Savings - Commercial		83,102	87,792,670	-	19,260,361
Total for New Programs		87,242	118,391,738	918	24,732,591
Grand Total (gross)		150,461	203,887,819		
Net to Gross Ratio		0.9			
Grand Total (net)		135,415	183,499,037	13,335	55,141,216

RESPONSES TO SCHOOL ENERGY COALITION INTERROGATORIES

- 1 c) The savings data provided by the OPA is annualized data, and as evident in the
2 table in response to part b) above, is over three times larger than the claimed
3 savings. THESL has taken a conservative approach and claimed savings based on
4 the implementation date of each specific program, resulting in an LRAM claim of
5 \$923K. Using the OPA's gross annualized data, the LRAM claim would be
6 approximately \$3M for the OPA program component alone.

RESPONSES TO SCHOOL ENERGY COALITION INTERROGATORIES

1 **INTERROGATORY 2:**

2 With respect to VECC IR #1, please also provide the same information for the general
3 service programs, where applicable.

4

5 **RESPONSE:**

6 a) All of the measures installed for general service sectors are custom measures that are
7 not on the OEB's Measures List. No prescriptive measures were used for these
8 programs.

9 b) Please refer to Tab 4, Schedules B to G.

10 c) Not applicable.

11 d) Not applicable.

RESPONSES TO VULNERABLE ENERGY CONSUMERS COALITION INTERROGATORIES

1 **INTERROGATORY 1:**

2 **Reference(s):** Manager's Summary Page 1 and Tables 2-4

3 The requested LRAM relief is composed of the 2007 calendar year savings resulting
4 from:

- 5 1. Third Tranche CDM programs implemented in 2005 and 2006;
- 6 2. New Third Tranche CDM programs implemented in 2007;
- 7 3. Ontario Power Authority ("OPA") CDM programs implemented in 2007.

8 a) Provide schedules for each of the above components for the residential sector listing
9 the complete list of input assumptions for all prescriptive measures implemented in
10 2007, including carry-over of third tranche 2005 and 2006

- 11 (i) Estimated gross and net unit savings kwh and kw
- 12 (ii) Free-ridership
- 13 (iii) Measure Life
- 14 (iv) Source(s) of estimates (specific reference page# etc)
- 15 (v) Year(s) Estimates applied to

16 b) For the Residential Sector provide a schedule showing the details of calculation of
17 2007 net and gross savings underpinning each component of the 2007 LRAM claim
18 as shown in Tables 2-4 on pages 6-8. Reconcile to the Tables.

RESPONSES TO VULNERABLE ENERGY CONSUMERS COALITION INTERROGATORIES

- 1 c) For the 2005/6 residential programs list the details of the mass market measures
2 (including TAPs) and indicate what persistence factor(s) were applied to 2007. If no
3 persistence factors were applied then provide a detailed explanation.
- 4 d) For the Enbridge TAPs program list all input assumptions (unless provided in
5 response to part a)). Provide a comparison of unit savings including water savings, to
6 EGDI's 2007 Audit report.

7

8 **RESPONSE:**

- 9 a) Refer to Tab 4, Schedule A.
- 10 b) Refer to Tab 4, Schedules B to G.
- 11 c) Refer to Table 1 below for a complete list of the mass market measures (including
12 TAPs) for the 2005/6 residential programs.

13

RESPONSES TO VULNERABLE ENERGY CONSUMERS COALITION INTERROGATORIES

1 **Table 1: Mass Market Measures for 2005-2006 Residential Programs**

CFLs	Refrigerator Recycle
Energy Star Room Air Conditioner	Insulator Kit
Room Air Conditioner Retirement	Caulking
LED Christmas Lights	Dimmer Switch
Efficient Showerhead	Motion Detector
Pipe Wrap	Energy Star Refrigerator
Faucet Aerator	Energy Star Stove
Programmable Thermostat	

2

3

4 A persistence factor of 100% was applied to 2007, as directed by the OEB on page 18
5 of its TRC Guide dated October 2, 2006:

6

7

8

9

“... However, at this time, LDCs should assume 100%
persistence in assessing CDM cost effectiveness unless
otherwise updated by the Board.”

10 d) The question is not pertinent to THESL’s LRAM claim as the Enbridge Audit report
11 was prepared specifically for the purpose of a gas claim, and did not involve details of
12 the electricity measures involved in the programs. THESL is not making any claims
13 for gas savings in this Application. As such, it is not possible to compare THESL’s
14 results with that of the Enbridge audit, as the audit and THESL’s claim focus on
15 separate and distinct program elements.

RESPONSES TO VULNERABLE ENERGY CONSUMERS COALITION INTERROGATORIES

1 **INTERROGATORY 2:**

2 **Reference(s):** Manager's Summary, Tables 2 and 3 and page 14: Exhibit 1

3 The SSM and LRAM claim for 2007 Third Tranche programs was reviewed and audited
4 by the SeeLine Group Ltd., which found that THESL's approach and calculation are
5 accurate and consistent with the Board-approved decision in EB-2007- the CDM
6 Guidelines.

7 a) Exhibit 1 Section 3.3.1 indicates "According to the OEB guidelines⁷, LDCs must
8 evaluate CDM programs using the best available information at the time of
9 evaluation. In the case of an SSM, this means assumptions available in 2006. For
10 LRAM purposes however, the OEB has directed that any updated input assumptions
11 made available throughout 2007 be used". Explain why the OPA assumptions for the
12 2007 residential programs are not the "best available".

13 b) Why should not the OPA 2007 assumptions also apply to calculation of the 2007
14 LRAM and SSM for 3rd tranche MARR measures installed in 2005 and 2006.

15 c) For the 2005-2007 measures including (but not limited to) the following, provide a
16 table that compares the input assumptions and savings

17 1) the OEB CDM TRC Guide (dated October 2006) Section 5

18 2) The OPA 2007 EKC Spring/Summer/Fall calculator

19 3) The OPA Measures and Input Assumptions List -

RESPONSES TO VULNERABLE ENERGY CONSUMERS COALITION INTERROGATORIES

1 www.powerauthority.on.ca/Page.asp?PageID=122&ContentID=6701&SiteNodeID=4
2 [04.](http://www.powerauthority.on.ca/Page.asp?PageID=122&ContentID=6701&SiteNodeID=4)

- 3 i) Residential Load Control
- 4 ii) CFL Screw in 13/14 W and 15w
- 5 iii) SLEDs
- 6 iv) Dimmer Switches
- 7 d) Recalculate the residential 2007 LRAM for 3rd tranche measures installed in 2005 and
8 2006 using 2007 OPA input assumptions. Compare to as filed.
- 9 e) Recalculate the residential 2007 SSM related to measures installed in 2005 and 2006
10 using 2007 OPA input assumptions. Compare to as filed.
- 11 f) Recalculate the carrying charges in the format of Table 9. Compare to as filed.
- 12 g) Recalculate the Residential Rate rider for 2005/2006 in the same format as Table 1.

13

14 **RESPONSE:**

- 15 a) The OPA Measures and Assumptions List (“OPA List”) was not intended to be used
16 by distributors for purposes of calculating LRAM and SSM at the time that THESL
17 undertook its 3rd Party Assessment and filed this application. THESL submits that the
18 “best available” information is meant to be the “best available” information approved
19 by the OEB for use in LRAM and SSM claims. It is precisely for this reason that on
20 Nov 4, 2008 the OEB began a consultation under docket EB-2008-0352 to determine

RESPONSES TO VULNERABLE ENERGY CONSUMERS COALITION INTERROGATORIES

1 whether the adoption of the OPA List was appropriate for use by distributors for the
2 evaluation of rate-funded CDM programs and the calculation of SSM and LRAM.
3 On Jan 27, 2009 the OEB approved the use of the OPA Measures and Assumptions
4 List for this purpose. However, as per the CDM Guidelines, the “best available”
5 approved assumptions list for use by THESL at the time that its 3rd Party Assessment
6 was completed (on September 15, 2008), and even at the time it filed its application
7 (on December 15, 2008), was the Assumptions and Measures List posted by the OEB.
8 The OEB confirmed this interpretation of the CDM Guidelines as part of their EB-
9 2008-0352 decision (page 2):

10 “Toronto Hydro Electric System requested clarification on
11 LRAM and third party assessments. At this time, the Board
12 would like to clarify that the estimates of savings and
13 adjustment factors used for the calculation of LRAM should
14 be the best available at the time of the third party assessment
15 referred to in section 7.5 of Guidelines for Electricity
16 Distributor Conservation and Demand Management
17 (“Guidelines”).”
18

19 As the OPA List was not endorsed by the OEB for use in calculating LRAM and
20 SSM during this time, there is no evidence to suggest that the unapproved OPA List
21 would constitute the “best available” information, and in THESL’s opinion, would be
22 counter to the OEB’s intention in its CDM Guidelines EB-2008-0037 proceeding.

23

RESPONSES TO VULNERABLE ENERGY CONSUMERS COALITION INTERROGATORIES

1 b) Refer to the response to question a) above.

2

3 c) THESL submits that there is limited value in comparing input assumption
4 methodologies in this proceeding, given that the OEB had a clear Assumptions and
5 Measures List in place for use by distributors at the time this application was
6 prepared, and with which THESL has complied. The OPA List was approved in EB-
7 2008-0352 by the OEB on Jan 27, 2009, well after this application was prepared and
8 filed. It is THESL's position that debating the variance in outcome and relative
9 merits of OEB and OPA input and assumptions lists is irrelevant to this proceeding,
10 given that the former was approved for use by the OEB at the time this application
11 was prepared, while the latter was not. The OEB provided clear direction as to the
12 input assumptions to be used by distributors in their LRAM and SSM applications,
13 and THESL, having complied with those guidelines, maintains that any debate or
14 discussion as to alternative hypothetical outcomes using different assumptions is
15 unhelpful in determining the merits of this application.

16

17 d) Refer to the response to question c) above.

18

19 e) Refer to the response to question c) above.

**RESPONSES TO VULNERABLE ENERGY CONSUMERS
COALITION INTERROGATORIES**

1 f) Refer to the response to question c) above.

2

3 g) Refer to the response to question c) above.

RESPONSES TO VULNERABLE ENERGY CONSUMERS COALITION INTERROGATORIES

1 **INTERROGATORY 3:**

2 **Reference(s):** Manager's Summary Table 4 and Page 14 and Exhibit 3

3 In calculating the LRAM claim for 2007 OPA programs, THESL has relied on savings
4 data obtained directly from the OPA, as contained in Exhibit 3. This savings data
5 matches the values used by THESL in calculating the OPA program LRAM component.

6 a) Provide the Complete list of residential sector input assumptions that underpin
7 THESL's report to the OPA on 2007 measures and Programs.

8 b) Provide details of the calculation of the residential sector savings estimates provided
9 to OPA. Indicate and reconcile any differences relative to the input assumptions
10 listed in part a). Compare to the results reported in the table in Section 3 Page 4 of
11 the Report.

12 c) Provide a copy of the TABIA Report on the SLED Exchange Program.

13

14 **RESPONSE:**

15 a) Please see Table 1 below for input assumptions for 2007 OPA programs.

16

RESPONSES TO VULNERABLE ENERGY CONSUMERS COALITION INTERROGATORIES

1 **Table 1: Input Assumptions for 2007 OPA Programs**

Measure Description	Unit Gross kWh Savings	Free Ridership
CFLs - 14 watt	107	10%
CFLs - 23 watt	179	10%
Aerators	34	10%
Efficient Showerheads	545	10%
Pipewrap	76	10%
Energy Star Refrigerators	74	1%
High Efficiency Range/Oven	55	1%
SLEDs	15.6	5%
Room Air Conditioner Recycle	621	30%
Refrigerator Retirement	1,200	30%
Freezer Retirement	900	30%
Ceiling Fans	102	30%
CFL's	44	30%
Dimmer Switch	24	30%
Furnace Filters	105	30%
Outdoor Motion Sensors	161	30%
Outdoor Solar Lights	10	30%

2

3

4 b) The details of THESL's savings estimates provided to the OPA are contained within
 5 the two annual reports submitted to the OPA (Exhibits 4 and 5 of this Application).
 6 The input assumptions used are the same as those listed in part a) above. THESL
 7 understands the reference to "Section 3 Page 4 of the Report" to mean section 3, page
 8 4 of the 2007 New Programs Annual Report (Exhibit 4). As the information

RESPONSES TO VULNERABLE ENERGY CONSUMERS COALITION INTERROGATORIES

- 1 contained in this report (Exhibit 4) is the same information which was submitted to
- 2 the OPA, the results are identical.
- 3
- 4 c) Please see Tab 4, Schedule H labelled "TABIA Report".

RESPONSES TO VULNERABLE ENERGY CONSUMERS COALITION INTERROGATORIES

1 **INTERROGATORY 4:**

2 **Reference(s):** Manager's Summary, Table 8

- 3 a) Provide a Schedule that shows the details of the "as filed" calculation of the
4 Residential Sector SSM for each of 2005/2006 carry forward measures/ programs and
5 2007 3rd tranche MARR funded Measures/Programs.
- 6 b) List all key assumptions (measure life, savings, discount rate etc).
- 7 c) Compare the key input assumptions to those used for OPA 2007 programs (including
8 EKC Campaigns).
- 9 d) Where there are significant differences between OPA assumptions and those used by
10 THESL to calculate the SSM claim, recalculate the SSM claim using OPA
11 assumptions.
- 12 e) Recalculate the Residential SSM portion of the rate rider using 2007 OPA
13 assumptions as requested on part d).

14

15 **RESPONSE:**

- 16 a) THESL has not claimed SSM for 2005/2006 carry forward programs. The total SSM
17 amount of \$586,011 is solely for 2007 3rd tranche MARR funded programs. The
18 table below summarizes the calculation of the Residential Sector SSM:

**RESPONSES TO VULNERABLE ENERGY CONSUMERS
 COALITION INTERROGATORIES**

Program	TRC Costs	TRC Benefits	TRC Net Benefits	SSM Amount
Residential Load Control Initiative	\$ (1,453,918)	\$ 6,889,628	\$ 5,435,710	\$ 271,785
TAPS Program	\$ (146,043)	\$ 1,306,152	\$ 1,160,109	\$ 58,005
Social Housing Program	\$ (881,309)	\$ 757,611	\$ (123,698)	\$ (6,185)

1
2
3
4
5

b) The table below summarizes the key assumptions for 3rd tranche MARR funded programs implemented in 2007:

Measure	Unit Gross kW Savings	Unit Gross kWh Savings	Free Ridership	Equipment Life (Yrs)
peaksaver	1.1	-	0%	15
Efficient Showerhead	0.039	545	10%	12
Pipe Wrap	0.005	76	10%	6
Faucet Aerator	0.002	34	10%	12
Programmable Thermostat	0.163	159	10%	18
Energy Star Refrigerator	0.017	74	1%	19
Energy Star Stove	-	55	1%	18

6
7
8
9
10
11
12
13

In the above table, a 1% free ridership was applied to the Energy Star refrigerator and stove for the Social Housing program as directed by the Board in EB-2007-0096.

THESL used its after tax weighted average cost of capital (WACC) of 5.36% for its 2007 SSM claim.

**RESPONSES TO VULNERABLE ENERGY CONSUMERS
COALITION INTERROGATORIES**

- 1 c) Please refer to the response to part c) of Interrogatory Exhibit J, Tab 4, Schedule 2.
2
3 d) Please refer to the response to part c) of Interrogatory Exhibit J, Tab 4, Schedule 2.
4
5 e) Please refer to the response to part c) of Interrogatory Exhibit J, Tab 4, Schedule 2.

Input Assumptions for Prescriptive Measures under Residential Sector

Measure Description	Gross Unit kWh Savings	Net Unit kWh Savings	Gross Unit kW Savings	Net Unit kW Savings	Free Ridership *	Measure Life (Yrs)	Source of Estimates **	Year Estimates Applied to			
								OEB 05	OEB 06	OEB 07	OPA 07
CFL 11 W	67	61	-	-	10%	3	Page 26	√	√		
CFL 15 W	104	94	-	-	10%	4	Page 26	√	√		√
Energy Star Room Air Conditioner	88	79	0.090	0.081	10%	12	Page 27	√	√		√
Efficient Showerhead	545	491	0.039	0.035	10%	12	Page 26	√	√	√	√
Pipe Wrap	76	68	0.005	0.005	10%	6	Page 26	√	√	√	√
Faucet Aerator	34	30	0.002	0.002	10%	12	Page 26	√	√	√	√
Programmable Thermostat	159	143	0.163	0.147	10%	18	Page 27	√	√	√	√
Refrigerator Recycle	1,200	1,080	0.272	0.245	10%	6	Page 26	√			√
Dimmer Switch	139	125	-	-	10%	10	Page 26		√		√
Motion Detector	209	188	-	-	10%	10	Page 26		√		
Energy Star Refrigerator	74	73	0.017	0.017	1%	19	Page 26		√	√	
Energy Star Stove	55	54	-	-	1%	18	Page 26		√	√	

* Free Ridership is from OEB's Assumptions and Measures List except for Energy Star Refrigerator and Stove (the last two measures from above table), which are 1% according to OEB decision on Sep. 11 of 2007 on THESL'S first LRAM/SSM application.

** Source of estimates is the Assumptions and Measures List from OEB's TRC Guide dated Oct. 2 of 2006.

THESL CDM Plan
 LRAM

Distribution Rates/Transformation Allowance

	Residential	G.S. <50	Scattered Load	50 - 1000 (NI)	50 - 1000 (I)	GS1-5 MW	LU>5000
2007	\$ 0.0155	\$ 0.0185	0.0180	\$ 4.98	\$ 4.98	\$ 4.16	\$ 3.55
2006	\$ 0.0154	\$ 0.0184	0.0179	\$ 4.97	\$ 4.96	\$ 4.15	\$ 3.54
				\$ (0.62)	\$ (0.62)	\$ (0.62)	\$ (0.62)

2007 Results

Funding Source	Program	kWh Savings				kVA Savings				Distribution Revenue Savings \$\$\$							Total Distribution Revenue Savings	
		Res	Gen.Serv. kW	< 50	Unmetered Scattered Load	Gen Serv 50-1000 kW Non_Interval	Gen Serv 50-1000 kW Interval	Gen Serv 1-5 MW	Large Users >5MW	Residential	Gen.Serv. kW	< 50	Unmetered Scattered Load	Gen Serv 50-1000 kW Non_Interval	Gen Serv 50-1000 kW Interval	Gen Serv 1-5 MW		Large Users >5MW
OEB Third Tranche	Enbridge TAPS	2,413,780								\$ 37,414	\$ -	\$ -	\$ -	\$ -	\$ -	\$ -	\$ -	\$ 37,414
	Social Housing	956,285								\$ 14,822	\$ -	\$ -	\$ -	\$ -	\$ -	\$ -	\$ -	\$ 14,822
	Leveraging Energy Conservation Load Displacement	-	223,157			5,339	1,609	2,369	2,693	\$ -	\$ 4,128	\$ -	\$ -	\$ 23,279	\$ 7,015	\$ 8,387	\$ 7,891	\$ 50,701
							6								\$ 25			
Total		3,370,065	223,157	-	-	5,339	1,615	2,369	2,693	\$ 52,236	\$ 4,128	\$ -	\$ -	\$ 23,279	\$ 7,040	\$ 8,387	\$ 7,891	\$ 102,962

Funding Source	Program	kWh Savings				kVA Savings				Distribution Revenue Savings \$\$\$							Total Distribution Revenue Savings	
		Res	Gen.Serv. kW	< 50	Unmetered Scattered Load	Gen Serv 50-1000 kW Non_Interval	Gen Serv 50-1000 kW Interval	Gen Serv 1-5 MW	Large Users >5MW	Residential	Gen.Serv. kW	< 50	Unmetered Scattered Load	Gen Serv 50-1000 kW Non_Interval	Gen Serv 50-1000 kW Interval	Gen Serv 1-5 MW		Large Users >5MW
Transition Plan	Enbridge TAPS	6,594,641	-	-	-	-	-	-	-	\$ 102,217	\$ -	\$ -	\$ -	\$ -	\$ -	\$ -	\$ -	\$ 102,217
	Social Housing	1,770,116	-	-	-	-	-	-	-	\$ 27,437	\$ -	\$ -	\$ -	\$ -	\$ -	\$ -	\$ -	\$ 27,437
	Leveraging Energy Conservation Load Displacement	-	675,229	-	-	6,353	5,769	6,761	2,899	\$ -	\$ 12,492	\$ -	\$ -	\$ 27,700	\$ 25,154	\$ 23,934	\$ 8,494	\$ 97,774
	Commercial Dryer	-	-	-	-	627	-	-	-	\$ -	\$ -	\$ -	\$ -	\$ 2,733	\$ -	\$ -	\$ -	\$ 2,733
	Mass Market (Home Depot)	1,849,070	3,040,398	-	-	-	-	-	-	\$ 28,661	\$ 56,247	\$ -	\$ -	\$ -	\$ -	\$ -	\$ -	\$ 84,908
	LED Traffic Lights	-	-	-	567,006	-	-	-	-	\$ -	\$ -	\$ -	10,206	\$ -	\$ -	\$ -	\$ -	\$ 10,206
	Stand-by Generators	-	-	-	-	-	-	-	8,196	\$ -	\$ -	\$ -	\$ -	\$ -	\$ -	\$ -	\$ 24,015	\$ 24,015
	Total		10,213,827	3,715,628	567,006	6,980	5,769	10,330	14,595	\$ 158,314	\$ 68,739	\$ 10,206	\$ -	\$ 30,433	\$ 25,154	\$ 36,567	\$ 42,762	\$ 372,175

Funding Source	Program	kWh Savings				kVA Savings				Distribution Revenue Savings \$\$\$							Total Distribution Revenue Savings	
		Res	Gen.Serv. kW	< 50	Unmetered Scattered Load	Gen Serv 50-1000 kW Non_Interval	Gen Serv 50-1000 kW Interval	Gen Serv 1-5 MW	Large Users >5MW	Residential	Gen.Serv. kW	< 50	Unmetered Scattered Load	Gen Serv 50-1000 kW Non_Interval	Gen Serv 50-1000 kW Interval	Gen Serv 1-5 MW		Large Users >5MW
OPA New Programs	BIP	-	-	-	-	699	134	-	-	\$ -	\$ -	\$ -	\$ -	\$ 3,046	\$ 585	\$ -	\$ -	\$ 3,631
	Low Income	195,948	-	-	-	-	-	-	-	\$ 3,037	\$ -	\$ -	\$ -	\$ -	\$ -	\$ -	\$ -	\$ 3,037
	Mass Market	265,492	-	-	-	-	-	-	-	\$ 4,115	\$ -	\$ -	\$ -	\$ -	\$ -	\$ -	\$ -	\$ 4,115
	Business Summer Savings	-	3,452,719	-	-	13,464	9,113	11,128	5,550	\$ -	\$ 63,875	\$ -	\$ -	\$ 58,701	\$ 39,731	\$ 39,394	\$ 16,263	\$ 217,964
Total		461,440	3,452,719	-	-	14,162	9,247	11,128	5,550	\$ 7,152	\$ 63,875	\$ -	\$ -	\$ 61,748	\$ 40,316	\$ 39,394	\$ 16,263	\$ 228,747

Funding Source	Program	kWh Savings				kVA Savings				Distribution Revenue Savings \$\$\$							Total Distribution Revenue Savings	
		Res	Gen.Serv. kW	< 50	Unmetered Scattered Load	Gen Serv 50-1000 kW Non_Interval	Gen Serv 50-1000 kW Interval	Gen Serv 1-5 MW	Large Users >5MW	Residential	Gen.Serv. kW	< 50	Unmetered Scattered Load	Gen Serv 50-1000 kW Non_Interval	Gen Serv 50-1000 kW Interval	Gen Serv 1-5 MW		Large Users >5MW
OPA Standard Programs	The Great Refrigerator Roundup	853,625	-	-	-	-	-	-	-	\$ 13,231	\$ -	\$ -	\$ -	\$ -	\$ -	\$ -	\$ -	\$ 13,231
	Residential Summer Savings	12,643,000	-	-	-	-	-	-	-	\$ 195,967	\$ -	\$ -	\$ -	\$ -	\$ -	\$ -	\$ -	\$ 195,967
	Every Kilowatt Counts	3,857,362	-	-	-	-	-	-	-	\$ 59,789	\$ -	\$ -	\$ -	\$ -	\$ -	\$ -	\$ -	\$ 59,789
Total		17,353,987	-	-	-	-	-	-	-	\$ 268,987	\$ -	\$ -	\$ -	\$ -	\$ -	\$ -	\$ -	\$ 268,987

2007 Grand Total		31,399,319	7,391,504	567,006	26,482	16,631	23,827	22,838	\$ 486,689	\$ 136,743	\$ 10,206	\$ -	\$ 115,460	\$ 72,510	\$ 84,348	\$ 66,915	\$ 972,871
-------------------------	--	------------	-----------	---------	--------	--------	--------	--------	------------	------------	-----------	------	------------	-----------	-----------	-----------	------------

2006 Results

Funding Source	Program	kWh Savings				kVA Savings				Distribution Revenue Savings \$\$\$						Total Distribution Revenue Savings			
		Res	Gen.Serv. kW	< 50	Unmetered Scattered Load	Gen Serv 50-1000 kW Non_Interval	Gen Serv 50-1000 kW Interval	Gen Serv MW	1-5	Large Users >5MW	Residential	Gen.Serv. kW	< 50	Unmetered Scattered Load	Gen Serv 50-1000 kW Non_Interval		Gen Serv 50-1000 kW Interval	Gen Serv 1-5 MW	Large Users >5MW
OEB Third Tranche	Enbridge TAPS	1,206,890	-	-	-	-	-	-	-	\$ 18,586	\$ -	\$ -	\$ -	\$ -	\$ -	\$ -	\$ -	\$ -	\$ 18,586
	Social Housing	218,034	-	-	-	-	-	-	-	\$ 3,358	\$ -	\$ -	\$ -	\$ -	\$ -	\$ -	\$ -	\$ -	\$ 3,358
	Leveraging Energy Conservation	-	111,578	-	-	2,428	663	493	337	\$ -	\$ 2,053	\$ -	\$ -	\$ 10,563	\$ 2,877	\$ 1,740	\$ 983	\$ -	\$ 18,216
	Load Displacement	-	-	-	-	-	3	-	-	\$ -	\$ -	\$ -	\$ -	\$ -	\$ 12	\$ -	\$ -	\$ -	\$ 12
	Total		1,424,924	111,578	-	-	2,428	666	493	337	\$ 21,944	\$ 2,053	\$ -	\$ -	\$ 10,563	\$ 2,889	\$ 1,740	\$ 983	\$ -

Funding Source	Program	kWh Savings				kVA Savings				Distribution Revenue Savings \$\$\$						Total Distribution Revenue Savings			
		Res	Gen.Serv. kW	< 50	Unmetered Scattered Load	Gen Serv 50-1000 kW Non_Interval	Gen Serv 50-1000 kW Interval	Gen Serv MW	1-5	Large Users >5MW	Residential	Gen.Serv. kW	< 50	Unmetered Scattered Load	Gen Serv 50-1000 kW Non_Interval		Gen Serv 50-1000 kW Interval	Gen Serv 1-5 MW	Large Users >5MW
Transition Plan	Enbridge TAPS	231,513	-	-	-	-	-	-	-	\$ 3,565	\$ -	\$ -	\$ -	\$ -	\$ -	\$ -	\$ -	\$ -	\$ 3,565
	Social Housing	62,825	-	-	-	-	-	-	-	\$ 968	\$ -	\$ -	\$ -	\$ -	\$ -	\$ -	\$ -	\$ -	\$ 968
	Leveraging Energy Conservation	-	334,878	-	-	162	517.46	646	1,118	\$ -	\$ 6,162	\$ -	\$ -	\$ 706	\$ 2,246	\$ 2,280	\$ 3,265	\$ -	\$ 14,658
	Load Displacement	-	-	-	-	-	-	-	-	\$ -	\$ -	\$ -	\$ -	\$ -	\$ -	\$ -	\$ -	\$ -	\$ -
	Commercial Dryer	-	-	-	-	241	-	-	-	\$ -	\$ -	\$ -	\$ -	\$ 1,049	\$ -	\$ -	\$ -	\$ -	\$ 1,049
	Mass Market (Home Depot)	-	1,520,199	-	-	-	-	-	-	\$ -	\$ 27,972	\$ -	\$ -	\$ -	\$ -	\$ -	\$ -	\$ -	\$ 27,972
	LED Traffic Lights	-	-	-	283,503	-	-	-	-	\$ -	\$ -	\$ 5,075	\$ -	\$ -	\$ -	\$ -	\$ -	\$ -	\$ 5,075
	Stand-by Generators	-	-	-	-	-	-	-	-	\$ -	\$ -	\$ -	\$ -	\$ -	\$ -	\$ -	\$ -	\$ -	\$ -
Total		294,338	1,855,077	-	283,503	403	517	646	1,118	\$ 4,533	\$ 34,133	\$ 5,075	\$ -	\$ 1,755	\$ 2,246	\$ 2,280	\$ 3,265	\$ -	\$ 53,286

Funding Source	Program	kWh Savings				kVA Savings				Distribution Revenue Savings \$\$\$						Total Distribution Revenue Savings			
		Res	Gen.Serv. kW	< 50	Unmetered Scattered Load	Gen Serv 50-1000 kW Non_Interval	Gen Serv 50-1000 kW Interval	Gen Serv MW	1-5	Large Users >5MW	Residential	Gen.Serv. kW	< 50	Unmetered Scattered Load	Gen Serv 50-1000 kW Non_Interval		Gen Serv 50-1000 kW Interval	Gen Serv 1-5 MW	Large Users >5MW
OPA New Programs	BIP	-	-	-	-	-	-	-	-	\$ -	\$ -	\$ -	\$ -	\$ -	\$ -	\$ -	\$ -	\$ -	\$ -
	Low Income	-	-	-	-	-	-	-	-	\$ -	\$ -	\$ -	\$ -	\$ -	\$ -	\$ -	\$ -	\$ -	\$ -
	Mass Market	-	-	-	-	-	-	-	-	\$ -	\$ -	\$ -	\$ -	\$ -	\$ -	\$ -	\$ -	\$ -	\$ -
	Business Summer Savings	-	-	-	-	-	-	-	-	\$ -	\$ -	\$ -	\$ -	\$ -	\$ -	\$ -	\$ -	\$ -	\$ -
	Total		-	-	-	-	-	-	-	-	\$ -	\$ -	\$ -	\$ -	\$ -	\$ -	\$ -	\$ -	\$ -

Funding Source	Program	kWh Savings				kVA Savings				Distribution Revenue Savings \$\$\$						Total Distribution Revenue Savings			
		Res	Gen.Serv. kW	< 50	Unmetered Scattered Load	Gen Serv 50-1000 kW Non_Interval	Gen Serv 50-1000 kW Interval	Gen Serv MW	1-5	Large Users >5MW	Residential	Gen.Serv. kW	< 50	Unmetered Scattered Load	Gen Serv 50-1000 kW Non_Interval		Gen Serv 50-1000 kW Interval	Gen Serv 1-5 MW	Large Users >5MW
OPA Standard Programs	The Great Refrigerator Roundup	-	-	-	-	-	-	-	-	\$ -	\$ -	\$ -	\$ -	\$ -	\$ -	\$ -	\$ -	\$ -	\$ -
	Residential Summer Savings	-	-	-	-	-	-	-	-	\$ -	\$ -	\$ -	\$ -	\$ -	\$ -	\$ -	\$ -	\$ -	\$ -
	Every Kilowatt Counts	-	-	-	-	-	-	-	-	\$ -	\$ -	\$ -	\$ -	\$ -	\$ -	\$ -	\$ -	\$ -	\$ -
	Total		-	-	-	-	-	-	-	-	\$ -	\$ -	\$ -	\$ -	\$ -	\$ -	\$ -	\$ -	\$ -

2006 Grand Total	1,719,262	1,966,655	283,503	2,832	1,183	1,139	1,455	\$ 26,477	\$ 36,186	\$ 5,075	\$ 12,318	\$ 5,135	\$ 4,020	\$ 4,248	\$ -	\$ 93,458
-------------------------	-----------	-----------	---------	-------	-------	-------	-------	-----------	-----------	----------	-----------	----------	----------	----------	------	-----------

Total for 2006 & 2007	33,118,580	9,358,159	850,508	29,313	17,814	24,966	24,293	\$ 513,166	\$ 172,929	\$ 15,281	\$ 127,777	\$ 77,645	\$ 88,368	\$ 71,163	\$ -	\$ 1,066,329
----------------------------------	------------	-----------	---------	--------	--------	--------	--------	------------	------------	-----------	------------	-----------	-----------	-----------	------	--------------

Additional Savings from 2005 and 2006 Programs

2007 Results

Funding Source	Program	kWh Savings				kVA Savings				Distribution Revenue Savings \$\$\$								Total Distribution Revenue Savings
		Res	Gen.Serv. kW	< 50	Unmetered Scattered Load	Gen Serv 50-1000 kW Non_Interval	Gen Serv 50-1000 kW Interval	Gen Serv 1-5 MW	Large Users >5MW	Residential	Gen.Serv. kW	< 50	Unmetered Scattered Load	Gen Serv 50-1000 kW Non_Interval	Gen Serv 50-1000 kW Interval	Gen Serv 1-5 MW	Large Users >5MW	
OEB Third Tranche	Mass Market Program	57,534,119	158,457	-	-	-	-	-	-	\$ 891,779	\$ 2,931	\$ -	\$ -	\$ -	\$ -	\$ -	\$ -	\$ 894,710
	TAPS	6,003,441	-	-	-	-	-	-	-	\$ 93,053	\$ -	\$ -	\$ -	\$ -	\$ -	\$ -	\$ -	\$ 93,053
	Refrigerator Buy-back Program	1,805,606	-	-	-	-	-	-	-	\$ 27,987	\$ -	\$ -	\$ -	\$ -	\$ -	\$ -	\$ -	\$ 27,987
	Social Housing	2,074,967	-	-	-	-	-	-	-	\$ 32,162	\$ -	\$ -	\$ -	\$ -	\$ -	\$ -	\$ -	\$ 32,162
	LED Traffic Signals	-	-	-	1,104,342	-	-	-	-	\$ -	\$ -	\$ 19,878	\$ -	\$ -	\$ -	\$ -	\$ -	\$ 19,878
	Leveraging Energy Conservation	-	-	-	-	9,583	2,911	-	-	\$ -	\$ -	\$ -	\$ -	\$ 41,781	\$ 10,305	\$ -	\$ -	\$ 52,086
	Load Displacement	-	-	-	-	-	17,331	8,071	-	\$ -	\$ -	\$ -	\$ -	\$ -	\$ 61,353	\$ 23,648	\$ -	\$ 85,001
	Total	67,418,132	158,457	-	1,104,342	-	9,583	20,242	8,071	\$ 1,044,981.0	\$ 2,931.5	\$ 19,878.2	\$ -	\$ 41,781.3	\$ 71,657.7	\$ 23,648.1	\$ -	\$ 1,204,877.8

Funding Source	Program	kWh Savings				kVA Savings				Distribution Revenue Savings \$\$\$								Total Distribution Revenue Savings
		Res	Gen.Serv. kW	< 50	Unmetered Scattered Load	Gen Serv 50-1000 kW Non_Interval	Gen Serv 50-1000 kW Interval	Gen Serv 1-5 MW	Large Users >5MW	Residential	Gen.Serv. kW	< 50	Unmetered Scattered Load	Gen Serv 50-1000 kW Non_Interval	Gen Serv 50-1000 kW Interval	Gen Serv 1-5 MW	Large Users >5MW	
OPA	Mass Market Program	-	-	-	-	-	-	-	-	\$ -	\$ -	\$ -	\$ -	\$ -	\$ -	\$ -	\$ -	\$ -
	TAPS	-	-	-	-	-	-	-	-	\$ -	\$ -	\$ -	\$ -	\$ -	\$ -	\$ -	\$ -	\$ -
	Refrigerator Buy-back Program	-	-	-	-	-	-	-	-	\$ -	\$ -	\$ -	\$ -	\$ -	\$ -	\$ -	\$ -	\$ -
	Social Housing	-	-	-	-	-	-	-	-	\$ -	\$ -	\$ -	\$ -	\$ -	\$ -	\$ -	\$ -	\$ -
	LED Traffic Signals	-	-	-	-	-	-	-	-	\$ -	\$ -	\$ -	\$ -	\$ -	\$ -	\$ -	\$ -	\$ -
	Leveraging Energy Conservation	-	-	-	-	-	-	-	-	\$ -	\$ -	\$ -	\$ -	\$ -	\$ -	\$ -	\$ -	\$ -
	Load Displacement	-	-	-	-	-	-	-	-	\$ -	\$ -	\$ -	\$ -	\$ -	\$ -	\$ -	\$ -	\$ -
	Total	-	-	-	-	-	-	-	-	\$ -	\$ -	\$ -	\$ -	\$ -	\$ -	\$ -	\$ -	\$ -

2007 Additional Savings	67,418,132	158,457	-	1,104,342	-	9,583	20,242	8,071	1,044,981	2,931	\$ 19,878	\$ -	\$ 41,781	\$ 71,658	\$ 23,648	\$ -	\$ 1,204,878
--------------------------------	-------------------	----------------	----------	------------------	----------	--------------	---------------	--------------	------------------	--------------	------------------	-------------	------------------	------------------	------------------	-------------	---------------------

2006 Results

Funding Source	Program	kWh Savings				kVA Savings				Distribution Revenue Savings \$\$\$								Total Distribution Revenue Savings
		Res	Gen.Serv. kW	< 50	Unmetered Scattered Load	Gen Serv 50-1000 kW Non_Interval	Gen Serv 50-1000 kW Interval	Gen Serv 1-5 MW	Large Users >5MW	Residential	Gen.Serv. kW	< 50	Unmetered Scattered Load	Gen Serv 50-1000 kW Non_Interval	Gen Serv 50-1000 kW Interval	Gen Serv 1-5 MW	Large Users >5MW	
OEB Third Tranche	Mass Market Program	28,767,060	79,228	-	-	-	-	-	-	\$ 443,013	\$ 1,458	\$ -	\$ -	\$ -	\$ -	\$ -	\$ -	\$ 444,471
	TAPS	3,102,710	-	-	-	-	-	-	-	\$ 47,782	\$ -	\$ -	\$ -	\$ -	\$ -	\$ -	\$ -	\$ 47,782
	Refrigerator Buy-back Program	902,803	-	-	-	-	-	-	-	\$ 13,903	\$ -	\$ -	\$ -	\$ -	\$ -	\$ -	\$ -	\$ 13,903
	Social Housing	1,056,377	-	-	-	-	-	-	-	\$ 16,268	\$ -	\$ -	\$ -	\$ -	\$ -	\$ -	\$ -	\$ 16,268
	LED Traffic Signals	-	-	-	552,171	-	-	-	-	\$ -	\$ -	\$ 9,884	\$ -	\$ -	\$ -	\$ -	\$ -	\$ 9,884
	Leveraging Energy Conservation	-	-	-	-	3,154	4,791	1,553	-	\$ -	\$ -	\$ -	\$ 13,719	\$ 20,795	\$ 5,481	\$ -	\$ -	\$ 39,995
	Load Displacement	-	-	-	-	-	1	8,666	4,036	\$ -	\$ -	\$ -	\$ -	\$ 3	\$ 30,590	\$ 11,784	\$ -	\$ 42,377
	Total	33,828,949	79,228	-	552,171	3,154	4,792	10,218	4,036	\$ 520,966	\$ 1,458	\$ 9,884	\$ 13,719	\$ 20,798	\$ 36,071	\$ 11,784	\$ -	\$ 614,679

Funding Source	Program	kWh Savings				kVA Savings				Distribution Revenue Savings \$\$\$								Total Distribution Revenue Savings
		Res	Gen.Serv. kW	< 50	Unmetered Scattered Load	Gen Serv 50-1000 kW Non_Interval	Gen Serv 50-1000 kW Interval	Gen Serv 1-5 MW	Large Users >5MW	Residential	Gen.Serv. kW	< 50	Unmetered Scattered Load	Gen Serv 50-1000 kW Non_Interval	Gen Serv 50-1000 kW Interval	Gen Serv 1-5 MW	Large Users >5MW	
OPA	Mass Market Program	-	-	-	-	-	-	-	-	\$ -	\$ -	\$ -	\$ -	\$ -	\$ -	\$ -	\$ -	\$ -
	TAPS	-	-	-	-	-	-	-	-	\$ -	\$ -	\$ -	\$ -	\$ -	\$ -	\$ -	\$ -	\$ -
	Refrigerator Buy-back Program	-	-	-	-	-	-	-	-	\$ -	\$ -	\$ -	\$ -	\$ -	\$ -	\$ -	\$ -	\$ -
	Social Housing	-	-	-	-	-	-	-	-	\$ -	\$ -	\$ -	\$ -	\$ -	\$ -	\$ -	\$ -	\$ -
	LED Traffic Signals	-	-	-	141,751	-	-	-	-	\$ -	\$ -	\$ 2,537	\$ -	\$ -	\$ -	\$ -	\$ -	\$ 2,537
	Leveraging Energy Conservation	-	580,394	-	-	-	-	-	1,612	\$ -	\$ 10,679	\$ -	\$ -	\$ -	\$ -	\$ 4,708	\$ -	\$ 15,387
	Load Displacement	-	-	-	-	-	-	-	-	\$ -	\$ -	\$ -	\$ -	\$ -	\$ -	\$ -	\$ -	\$ -
	Total	-	580,394	-	141,751	-	-	-	1,612	\$ -	\$ 10,679	\$ 2,537	\$ -	\$ -	\$ 4,708	\$ -	\$ -	\$ 17,924

2006 Additional Savings	33,828,949	659,622	-	693,923	3,154	4,792	10,218	5,648	\$ 520,966	\$ 12,137	\$ 12,421	\$ 13,719	\$ 20,798	\$ 36,071	\$ 16,491	\$ -	\$ 632,603
--------------------------------	-------------------	----------------	----------	----------------	--------------	--------------	---------------	--------------	-------------------	------------------	------------------	------------------	------------------	------------------	------------------	-------------	-------------------

2006+2007 Additional Savings	101,247,082	818,079	-	1,798,265	3,154	14,375	30,461	13,719	\$ 1,565,947	\$ 15,069	\$ 32,299	\$ 13,719	\$ 62,579	\$ 107,729	\$ 40,139	\$ -	\$ 1,837,481
-------------------------------------	--------------------	----------------	----------	------------------	--------------	---------------	---------------	---------------	---------------------	------------------	------------------	------------------	------------------	-------------------	------------------	-------------	---------------------

LRAM Distribution Revenue Savings Calculation
FROM 2005 and 2006 Projects Programs

2007 Rate Year

	kWh/kVA Savings	Distribution Rate/Transformer Allowance	Distribution Revenue Savings
Residential			
Mass Market Program	57,534,119	\$ 0.0155	\$ 891,778.85
TAPS	6,003,441	\$ 0.0155	\$ 93,053.33
Refrigerator Buy-back Program	1,805,606	\$ 0.0155	\$ 27,986.89
Social Housing	2,074,967	\$ 0.0155	\$ 32,161.98
LED Traffic Signals	-	\$ 0.0155	\$ -
Leveraging Energy Conservation	-	\$ 0.0155	\$ -
Load Displacement	-	\$ 0.0155	\$ -
Total	67,418,132		\$ 1,044,981.05

General Service <50 kW

Mass Market Program	158,457	\$ 0.0185	\$ 2,931.45
TAPS	-	\$ 0.0185	\$ -
Refrigerator Buy-back Program	-	\$ 0.0185	\$ -
Social Housing	-	\$ 0.0185	\$ -
LED Traffic Signals	-	\$ 0.0185	\$ -
Leveraging Energy Conservation	-	\$ 0.0185	\$ -
Load Displacement	-	\$ 0.0185	\$ -
Total	158,457		\$ 2,931.45

General Service 50-1000 kW (non-interval)

Mass Market Program	-	\$ 4.36	\$ -
TAPS	-	\$ 4.36	\$ -
Refrigerator Buy-back Program	-	\$ 4.36	\$ -
Social Housing	-	\$ 4.36	\$ -
LED Traffic Signals	-	\$ 4.36	\$ -
Leveraging Energy Conservation	-	\$ 4.36	\$ -
Load Displacement	-	\$ 4.36	\$ -
Total	-		\$ -

General Service 50-1000 kW (Interval)

Mass Market Program	-	\$ 4.36	\$ -
TAPS	-	\$ 4.36	\$ -
Refrigerator Buy-back Program	-	\$ 4.36	\$ -
Social Housing	-	\$ 4.36	\$ -
LED Traffic Signals	-	\$ 4.36	\$ -
Leveraging Energy Conservation	9,583	\$ 4.36	\$ 41,781.34
Load Displacement	-	\$ 4.36	\$ -
Total	9,583		\$ 41,781.34

General Service 1000-5000 kW

Mass Market Program	-	\$ 3.54	\$ -
---------------------	---	---------	------

LRAM Distribution Revenue Savings Calculation
FROM 2005 and 2006 Projects Programs

TAPS	-	\$	3.54	\$	-
Refrigerator Buy-back Program	-	\$	3.54	\$	-
Social Housing	-	\$	3.54	\$	-
LED Traffic Signals	-	\$	3.54	\$	-
Leveraging Energy Conservation	2,911	\$	3.54	\$	10,304.67
Load Displacement	17,331	\$	3.54	\$	61,353.04
Total	20,242			\$	71,657.71

Large Users >5000 kW

Mass Market Program	-	\$	2.93	\$	-
TAPS	-	\$	2.93	\$	-
Refrigerator Buy-back Program	-	\$	2.93	\$	-
Social Housing	-	\$	2.93	\$	-
LED Traffic Signals	-	\$	2.93	\$	-
Leveraging Energy Conservation	-	\$	2.93	\$	-
Load Displacement	8,071	\$	2.93	\$	23,648.10
Total	8,071			\$	23,648.10

Unmetered Scattered Load

LED Traffic Lights	1,104,342	\$	0.0180	\$	19,878.16
Total	1,104,342			\$	19,878.16

2007 Rate Year Distribution Revenue Savings

\$ 1,204,877.81

2006 Rate Year

	kWH Savings		Distribution Rate/Transformer Allowance		Distribution Revenue Savings
Residential					
Mass Market Program	28,767,060	\$	0.0154	\$	443,012.72
TAPS	3,102,710	\$	0.0154	\$	47,781.73
Refrigerator Buy-back Program	902,803	\$	0.0154	\$	13,903.16
Social Housing	1,056,377	\$	0.0154	\$	16,268.21
LED Traffic Signals	-	\$	0.0154	\$	-
Leveraging Energy Conservation	-	\$	0.0154	\$	-
Load Displacement	-	\$	0.0154	\$	-
Total	-			\$	520,965.82

General Service <50 kW

Mass Market Program	79,228	\$	0.0184	\$	1,457.80
TAPS	-	\$	0.0184	\$	-

LRAM Distribution Revenue Savings Calculation
FROM 2005 and 2006 Projects Programs

Refrigerator Buy-back Program	-	\$	0.0184	\$	-
Social Housing	-	\$	0.0184	\$	-
LED Traffic Signals	-	\$	0.0184	\$	-
Leveraging Energy Conservation	580,394	\$	0.0184	\$	10,679.25
Load Displacement	-	\$	0.0184	\$	-
Total	659,622			\$	12,137.05

General Service 50-1000 kW (non-interval)

Mass Market Program	-	\$	4.35	\$	-
TAPS	-	\$	4.35	\$	-
Refrigerator Buy-back Program	-	\$	4.35	\$	-
Social Housing	-	\$	4.35	\$	-
LED Traffic Signals	-	\$	4.35	\$	-
Leveraging Energy Conservation	3,154	\$	4.35	\$	13,719.13
Load Displacement	-	\$	4.35	\$	-
Total	3,154			\$	13,719.13

General Service 50-1000 kW (Interval)

Mass Market Program	-	\$	4.34	\$	-
TAPS	-	\$	4.34	\$	-
Refrigerator Buy-back Program	-	\$	4.34	\$	-
Social Housing	-	\$	4.34	\$	-
LED Traffic Signals	-	\$	4.34	\$	-
Leveraging Energy Conservation	4,791	\$	4.34	\$	20,794.84
Load Displacement	1	\$	4.34	\$	3.12
Total	4,792			\$	20,797.96

General Service 1000-5000 kW

Mass Market Program	-	\$	3.53	\$	-
TAPS	-	\$	3.53	\$	-
Refrigerator Buy-back Program	-	\$	3.53	\$	-
Social Housing	-	\$	3.53	\$	-
LED Traffic Signals	-	\$	3.53	\$	-
Leveraging Energy Conservation	1,553	\$	3.53	\$	5,480.97
Load Displacement	8,666	\$	3.53	\$	30,589.86
Total	10,218			\$	36,070.84

Large Users >5000 kW

Mass Market Program	-	\$	2.92	\$	-
TAPS	-	\$	2.92	\$	-
Refrigerator Buy-back Program	-	\$	2.92	\$	-
Social Housing	-	\$	2.92	\$	-
LED Traffic Signals	-	\$	2.92	\$	-
Leveraging Energy Conservation	1,612	\$	2.92	\$	4,707.64
Load Displacement	4,036	\$	2.92	\$	11,783.69
Total	5,648			\$	16,491.33

LRAM Distribution Revenue Savings Calculation
FROM 2005 and 2006 Projects Programs

Unmetered Scattered Load

LED Traffic Lights	693,923	\$	0.0179	\$	12,421.21
Total	693,923			\$	12,421.21

2006 Rate Year Distribution Revenue Savings

\$ 632,603.36

2006 Rate Year + 2007 Rate Year Distribution Revenue Savings

\$ 1,837,481.16

2,903,810.32

LRAM Distribution Revenue Savings Calculation FROM 2007 Projects

2007 Rate Year

	kWh/kVA Savings	Distribution Rate/Transformer Allowance	Distribution Revenue Savings
Residential			
Enbridge TAPS	9,008,420	\$ 0.0155	\$ 139,630.52
Social and Low Income Housing	2,922,349	\$ 0.0155	\$ 45,296.41
Summer Savings	12,643,000	\$ 0.0155	\$ 195,966.50
Great Refrigerator Roundup	853,625	\$ 0.0155	\$ 13,231.19
Mass Market	2,114,562	\$ 0.0155	\$ 32,775.71
Every kilowatt Counts	3,857,362	\$ 0.0155	\$ 59,789.11
Total	31,399,319		\$ 486,689.44
General Service <50 kW			
Summer Savings	3,452,719	\$ 0.0185	\$ 63,875.30
Leveraging Energy Conservation - CI&I	898,386	\$ 0.0185	\$ 16,620.15
Mass Market	3,040,398	\$ 0.0185	\$ 56,247.37
Total	7,391,504		\$ 136,742.82
General Service 50-1000 kW (non-interval)			
Leveraging Energy Conservation - CI&I	11,693	\$ 4.36	\$ 50,979.47
Summer Savings	13,464	\$ 4.36	\$ 58,701.42
Commercial Dryers	627	\$ 4.36	\$ 2,732.86
BIP	699	\$ 4.36	\$ 3,046.15
Total	26,482		\$ 115,459.90
General Service 50-1000 kW (Interval)			
Leveraging Energy Conservation - CI&I	7,378	\$ 4.36	\$ 32,168.71
Summer Savings	9,113	\$ 4.36	\$ 39,731.02
Load displacement	6	\$ 4.36	\$ 25.08
BIP	134	\$ 4.36	\$ 584.80
Total	16,631		\$ 72,509.61
General Service 1000-5000 kW			
Leveraging Energy Conservation - CI&I	9,130	\$ 3.54	\$ 32,321.26
Summer Savings	11,128	\$ 3.54	\$ 39,393.87
Load displacement	3,569	\$ 3.54	\$ 12,632.77
BIP	-	\$ 3.54	\$ -
Total	23,827		\$ 84,347.89
Large Users >5000 kW			
Leveraging Energy Conservation - CI&I	5,592	\$ 2.93	\$ 16,384.95
Load displacement	3,499	\$ 2.93	\$ 10,252.60
Stand-by Generators	8,196	\$ 2.93	\$ 24,015.38
Summer Savings	5,550	\$ 2.93	\$ 16,262.55

LRAM Distribution Revenue Savings Calculation
FROM 2007 Projects

Total	22,838		\$	66,915.48
-------	--------	--	----	-----------

Unmetered Scattered Load

LED Traffic Lights	567,006	\$	0.0180	\$	10,206.10
Total	567,006			\$	10,206.10

2007 Rate Year Distribution Revenue Savings	\$	972,871.25	\$	-
--	-----------	-------------------	-----------	----------

2006 Rate Year

	<u>kWH Savings</u>		<u>Distribution Rate/Transformer Allowance</u>		<u>Distribution Revenue Savings</u>
Residential					
Enbridge TAPS	1,438,403	\$	0.0154	\$	22,151.40
Social and Low Income Housing	280,859	\$	0.0154	\$	4,325.23
Total	1,719,262			\$	26,476.63

General Service <50 kW

Leveraging Energy Conservation - CI&I	446,456	\$	0.0184	\$	8,214.79
Mass Market	1,520,199	\$	0.0184	\$	27,971.66
Total	1,966,655			\$	36,186.46

General Service 50-1000 kW (non-interval)

Leveraging Energy Conservation - CI&I	2,591	\$	4.35	\$	11,269.03
Commercial Dryers	241	\$	4.35	\$	1,048.54
Total	2,832			\$	12,317.57

General Service 50-1000 kW (Interval)

Leveraging Energy Conservation - CI&I	1,180	\$	4.34	\$	5,122.47
Load displacement	3	\$	4.34	\$	12.48
Total	1,183			\$	5,134.96

General Service 1000-5000 kW

Leveraging Energy Conservation - CI&I	1,139	\$	3.53	\$	4,019.88
Load displacement	-	\$	3.53	\$	-
Total	1,139			\$	4,019.88

Large Users >5000 kW

Leveraging Energy Conservation - CI&I	1,455	\$	2.92	\$	4,247.72
Load displacement	-	\$	2.92	\$	-

LRAM Distribution Revenue Savings Calculation
FROM 2007 Projects

Summer Savings	-	\$	2.92	\$	-
Total	1,455			\$	4,247.72

Unmetered Scattered Load

LED Traffic Lights	283,503	\$	0.0179	\$	5,074.70
Total	283,503			\$	5,074.70

2006 Rate Year Distribution Revenue Savings				\$	93,457.91
--	--	--	--	-----------	------------------

2006 Rate Year + 2007 Rate Year Distribution Revenue Savings				\$	1,066,329.16
---	--	--	--	-----------	---------------------

OEB 3rd Tranche kWh-LRAM

Program	Effective Date	Freeridership %	Customer Class	kW Savings (For Non-Residential)	kWh Savings (2006 Rate)	kWh Savings (2007 Rate)	Total kWh Savings	Additional kWh Savings (2006 Rate)
Enbridge TAPS	May 06 - Jan. 07	10%	Residential	n/a	1,206,890	2,413,780	3,620,670	100,990
Social Housing	Nov. 06 - Mar. 07	1%	Residential	n/a	218,034	956,285	1,174,319	18,894
Leveraging Energy Conservation	May 06 - Jan. 07	Expand Group	General Service	Expand Group	1,608,314	5,087,410	6,695,724	1,179,099
Project 1	Jan. 07	30%	General Service	13	21,080	42,160	63,240	-
Project 2	Jul. 06 - Aug. 06	0%	General Service	n/a	31,667	63,333	95,000	43,750
Project 3	May 06 - Jan. 07	30%	General Service	7.2	14,736	29,472	44,208	29,472
Project 4	Apr. 07	30%	General Service	333	162,091	1,296,728	1,458,819	-
Project 5	Jun. 07	30%	General Service	69	-	172,591	172,591	-
Project 6	Feb. 07 - May 07	30%	General Service	387	136,267	722,400	858,667	-
Project 7	May 06 - Jan. 07	30%	General Service	1,512	807,710	1,615,419	2,423,129	809,134
Project 8	Jul. 06 - Mar. 07	30%	General Service	see sheet	434,763	1,145,305	1,580,069	296,743
Load Displacement	Dec. 06	30%	General Service	3.6	1,035	2,071	3,106	259
Grand Total					3,034,273	8,459,545	11,493,818	1,299,242

TAPS kWh SAVINGS CALCULATION

Completion Month	Completion Year	Measure	Free Ridership %	Annual kWh Savings as per OEB (net)	# of Measures	Total # of Completion Months to the End of 2007	Total kWh Savings to the End of 2007	kWh Savings Associated with 2006 Rates	kWh Savings Associated with 2007 Rates	Total kWh Savings to the End of 2007 (Gross of Freeriders)	Additional kWh Savings Associated with 2006 Rates
11	2006	Efficient Showerheads	10%	491	157	12	77,073	25,691	51,382	85,636	6,423
11	2006	Pipewrap	10%	68	149	12	10,192	3,397	6,794	11,324	849
11	2006	Programable Thermostats	10%	1,320	32	12	42,231	14,077	28,154	46,923	3,519
11	2006	CFLs - 14 watt	10%	96	13,556	12	1,302,027	434,009	868,018	1,446,696	108,502
11	2006	CFLs - 23 watt	10%	161	120	12	19,293	6,431	12,862	21,437	1,608
11	2006	Aerators	10%	30	322	12	9,748	3,249	6,499	10,831	812
4	2006	Efficient Showerheads	10%	491	1	12	491	164	327	545	327
5	2006	Efficient Showerheads	10%	491	2	12	982	327	655	1,091	573
6	2006	Efficient Showerheads	10%	491	1	12	491	164	327	545	245
7	2006	Efficient Showerheads	10%	491	2	12	982	327	655	1,091	409
8	2006	Efficient Showerheads	10%	491	6	12	2,945	982	1,964	3,273	982
9	2006	Efficient Showerheads	10%	491	23	12	11,291	3,764	7,527	12,545	2,823
4	2006	CFLs - 14 watt	10%	96	4	12	384	128	256	427	256
6	2006	CFLs - 14 watt	10%	96	2	12	192	64	128	213	96
6	2006	CFLs - 23 watt	10%	161	2	12	322	107	214	357	161
4	2006	Pipewrap	10%	68	1	12	68	23	46	76	46
5	2006	Pipewrap	10%	68	2	12	137	46	91	152	80
6	2006	Pipewrap	10%	68	1	12	68	23	46	76	34
7	2006	Pipewrap	10%	68	2	12	137	46	91	152	57
8	2006	Pipewrap	10%	68	6	12	410	137	274	456	137
9	2006	Pipewrap	10%	68	14	12	958	319	638	1,064	239
4	2006	Aerators	10%	30	4	12	121	40	81	135	81
5	2006	Aerators	10%	30	4	12	121	40	81	135	71
6	2006	Aerators	10%	30	2	12	61	20	40	67	30
7	2006	Aerators	10%	30	4	12	121	40	81	135	50
8	2006	Aerators	10%	30	12	12	363	121	242	404	121
9	2006	Aerators	10%	30	34	12	1,029	343	686	1,144	257
4	2006	CFLs - 14 watt	10%	(96)	336	12	(32,272)	(10,757)	(21,515)	(35,858)	(21,515)
4	2006	Efficient Showerheads	10%	(491)	15	12	(7,364)	(2,455)	(4,909)	(8,182)	(4,909)
4	2006	Pipewrap	10%	(68)	16	12	(1,094)	(365)	(730)	(1,216)	(730)
4	2006	Aerators	10%	(30)	32	12	(969)	(323)	(646)	(1,076)	(646)
12	2006	Efficient Showerheads	10%	491	269	12	132,055	44,018	88,036	146,727	-
12	2006	Pipewrap	10%	68	240	12	16,416	5,472	10,944	18,240	-
12	2006	Programable Thermostats	10%	1,320	9	12	11,877	3,959	7,918	13,197	-
12	2006	CFLs - 14 watt	10%	96	20,162	12	1,936,520	645,507	1,291,013	2,151,689	-
12	2006	CFLs - 23 watt	10%	161	426	12	68,491	22,830	45,660	76,101	-
12	2006	Aerators	10%	30	488	12	14,773	4,924	9,849	16,415	-
Total							3,620,670	1,206,890	2,413,780	4,022,966	100,990

SOCIAL HOUSING kWh SAVINGS CALCULATION

TORONTO COMMUNITY HOUSING CORPORATION kWh SAVINGS CALCULATION

Completion Month	Completion Year	Measure	Free Ridership %	Annual kWh Savings as per OEB (net)	# of Measures	Total # of Completion Months to the End of 2007	Total kWh Savings to the End of 2007	kWh Savings Associated with 2006 Rates	kWh Savings Associated with 2007 Rates	Total kWh Savings to the End of 2007 (Gross of Freeriders)	Additional kWh Savings Associated with 2006 Rates
11	2006	Energy Star Refrigerators	1%	73	1,167	12	85,494	28,498	56,996	86,358	7,125
11	2006	High Efficiency Range/Oven	1%	54	1,422	12	77,428	25,809	51,619	78,210	6,452
12	2006	Energy Star Refrigerators	1%	73	651	12	47,692	15,897	31,795	48,174	-
12	2006	High Efficiency Range/Oven	1%	54	738	12	40,184	13,395	26,789	40,590	-
1	2007	Energy Star Refrigerators	1%	73	708	11	47,546	12,967	34,579	48,026	-
1	2007	High Efficiency Range/Oven	1%	54	777	11	38,782	10,577	28,205	39,174	-
2	2007	Energy Star Refrigerators	1%	73	824	10	50,305	10,061	40,244	50,813	-
2	2007	High Efficiency Range/Oven	1%	54	1,564	10	70,967	14,193	56,773	71,683	-
Total							458,398	131,398	327,000	463,028	13,577

Various Residential

SOCIAL HOUSING SERVICES CORPORATION kWh SAVINGS CALCULATION

Completion Month	Completion Year	Project	Free Ridership %	Annual kWh Savings as per OEB (net)	# of Participants	Total # of Completion Months to the End of 2007	Total kWh Savings to the End of 2007	kWh Savings Associated with 2006 Rates	kWh Savings Associated with 2007 Rates	Total kWh Savings to the End of 2007 (Gross of Freeriders)	Additional kWh Savings Associated with 2006 Rates
10	2006	Location 1	1%	31,902	1	12	31,902	10,634	21,268	32,224	5,317
3	2007	Location 2	1%	311,920	1	9	233,940	25,993	207,947	236,303	-
3	2007	Location 3	1%	3,903	1	9	2,927	325	2,602	2,957	-
3	2007	Location 4	1%	25,277	1	9	18,958	2,106	16,852	19,150	-
3	2007	Location 5	1%	274,198	1	9	205,648	22,850	182,798	207,725	-
3	2007	Location 6	1%	1,374	1	9	1,031	115	916	1,041	-
3	2007	Location 7	1%	295,353	1	9	221,515	24,613	196,902	223,752	-
Total							715,921	86,636	629,285	723,152	5,317
Grand Total							1,174,319	218,034	956,285	1,186,181	18,894

LEVERAGING ENERGY CONSERVATION kWh SAVINGS CALCULATION

kWh SAVINGS CALCULATION for Project 1

Completion Month	Completion Year	Project	Free Ridership %	Annual kWh Savings as per OEB (net)	# of Participants	Total # of Completion Months to the End of 2007	Total kWh Savings to the End of 2007	kWh Savings Associated with 2006 Rates	kWh Savings Associated with 2007 Rates	Total kWh Savings to the End of 2007 (Gross of Freeriders)	Additional kWh Savings Associated with 2006 Rates		
12	2006	Project 1	30%	63,240	1	12	63,240	21,080	42,160	90,343	-		
13 kW							Total		63,240	21,080	42,160	90,343	-

kWh SAVINGS CALCULATION for Project 2

Completion Month	Completion Year	Measure	Free Ridership %	Annual kWh Savings as per OEB (net)	# of Measures	Total # of Completion Months to the End of 2007	Total kWh Savings to the End of 2007	kWh Savings Associated with 2006 Rates	kWh Savings Associated with 2007 Rates	Total kWh Savings to the End of 2007 (Gross of Freeriders)	Additional kWh Savings Associated with 2006 Rates	
6	2006	Fuel Switching - Gas Water Heater	0%	5,000	10	12	50,000	16,667	33,333	50,000	25,000	
7	2006	Fuel Switching - Gas Water Heater	0%	5,000	9	12	45,000	15,000	30,000	45,000	18,750	
							Total	95,000	31,667	63,333	95,000	43,750

kWh SAVINGS CALCULATION for Project 3

Completion Month	Completion Year	Project	Free Ridership %	Annual kWh Savings as per OEB (net)	# of Participants	Total # of Completion Months to the End of 2007	Total kWh Savings to the End of 2007	kWh Savings Associated with 2006 Rates	kWh Savings Associated with 2007 Rates	Total kWh Savings to the End of 2007 (Gross of Freeriders)	Additional kWh Savings Associated with 2006 Rates	
4	2006	Project 3	30%	44,208	1	12	44,208	14,736	29,472	63,155	29,472	
7.2 kW							Total	44,208	14,736	29,472	63,155	29,472

kWh SAVINGS CALCULATION for Project 4

Completion Month	Completion Year	Project	Free Ridership %	Annual kWh Savings as per OEB (net)	# of Participants	Total # of Completion Months to the End of 2007	Total kWh Savings to the End of 2007	kWh Savings Associated with 2006 Rates	kWh Savings Associated with 2007 Rates	Total kWh Savings to the End of 2007 (Gross of Freeriders)	Additional kWh Savings Associated with 2006 Rates		
3	2007	Project 4	30%	1,945,092	1	9	1,458,819	162,091	1,296,728	2,084,027	-		
333 kW							Total		1,458,819	162,091	1,296,728	2,084,027	-

kWh SAVINGS CALCULATION for Project 5

Completion Month	Completion Year	Project	Free Ridership %	Annual kWh Savings as per OEB (net)	# of Participants	Total # of Completion Months to the End of 2007	Total kWh Savings to the End of 2007	kWh Savings Associated with 2006 Rates	kWh Savings Associated with 2007 Rates	Total kWh Savings to the End of 2007 (Gross of Freeriders)	Additional kWh Savings Associated with 2006 Rates		
5	2007	Project 5	30%	295,871	1	7	172,591	-	172,591	246,559	-		
69 kW							Total		172,591	-	172,591	246,559	-

kWh SAVINGS CALCULATION for Project 6

Completion Month	Completion Year	Project	Free Ridership %	Annual kWh Savings as per OEB (net)	# of Participants	Total # of Completion Months to the End of 2007	Total kWh Savings to the End of 2007	kWh Savings Associated with 2006 Rates	kWh Savings Associated with 2007 Rates	Total kWh Savings to the End of 2007 (Gross of Freeriders)	Additional kWh Savings Associated with 2006 Rates		
1	2007	Location 1	30%	274,400	1	11	251,533	68,600	182,933	359,333	-		
2	2007	Location 2	30%	406,000	1	10	338,333	67,667	270,667	483,333	-		
4	2007	Location 3	30%	403,200	1	8	268,800	-	268,800	384,000	-		
387 kW							Total		858,667	136,267	722,400	1,226,667	-

kWh SAVINGS CALCULATION for Project 7

Completion Month	Completion Year	Project	Free Ridership %	Annual kWh Savings as per OEB (net)	# of Participants	Total # of Completion Months to the End of 2007	Total kWh Savings to the End of 2007	kWh Savings Associated with 2006 Rates	kWh Savings Associated with 2007 Rates	Total kWh Savings to the End of 2007 (Gross of Freeriders)	Additional kWh Savings Associated with 2006 Rates
11	2006	Location 1	30%	189,282	1	12	189,282	63,094	126,188	270,403	15,774
11	2006	Location 2	30%	18,400	1	12	18,400	6,133	12,267	26,286	1,533
4	2006	Location 3	30%	36,439	1	12	36,439	12,146	24,292	52,055	24,292
11	2006	Location 4	30%	34,193	1	12	34,193	11,398	22,795	48,847	2,849
11	2006	Location 5	30%	182,592	1	12	182,592	60,864	121,728	260,845	15,216
5	2006	Location 6	30%	9,089	1	12	9,089	3,030	6,059	12,984	5,302
4	2006	Location 7	30%	25,822	1	12	25,822	8,607	17,215	36,889	17,215
11	2006	Location 8	30%	51,437	1	12	51,437	17,146	34,292	73,482	4,286
5	2006	Location 9	30%	4,823	1	12	4,823	1,608	3,215	6,890	2,813
11	2006	Location 10	30%	73,241	1	12	73,241	24,414	48,827	104,630	6,103
11	2006	Location 11	30%	27,736	1	12	27,736	9,245	18,491	39,623	2,311
4	2006	Location 12	30%	23,713	1	12	23,713	7,904	15,808	33,875	15,808
4	2006	Location 13	30%	136,925	1	12	136,925	45,642	91,283	195,607	91,283
4	2006	Location 14	30%	54,461	1	12	54,461	18,154	36,308	77,802	36,308
4	2006	Location 15	30%	12,237	1	12	12,237	4,079	8,158	17,481	8,158
11	2006	Location 16	30%	48,297	1	12	48,297	16,099	32,198	68,995	4,025
11	2006	Location 17	30%	116,911	1	12	116,911	38,970	77,940	167,015	9,743
11	2006	Location 18	30%	107,650	1	12	107,650	35,883	71,767	153,786	8,971
4	2006	Location 19	30%	31,215	1	12	31,215	10,405	20,810	44,593	20,810
4	2006	Location 20	30%	162,268	1	12	162,268	54,089	108,178	231,811	108,178
4	2006	Location 21	30%	28,230	1	12	28,230	9,410	18,820	40,329	18,820
12	2006	Location 22	30%	69,757	1	12	69,757	23,252	46,505	99,653	-
11	2006	Location 23	30%	143,147	1	12	143,147	47,716	95,431	204,496	11,929
11	2006	Location 24	30%	33,493	1	12	33,493	11,164	22,329	47,847	2,791
5	2006	Location 25	30%	14,961	1	12	14,961	4,987	9,974	21,373	8,727
4	2006	Location 26	30%	55,651	1	12	55,651	18,550	37,100	79,501	37,100
5	2006	Location 27	30%	21,344	1	12	21,344	7,115	14,230	30,492	12,451
11	2006	Location 28	30%	123,026	1	12	123,026	41,009	82,018	175,752	10,252
11	2006	Location 29	30%	84,483	1	12	84,483	28,161	56,322	120,690	7,040
11	2006	Location 30	30%	9,633	1	12	9,633	3,211	6,422	13,762	803
12	2006	Location 31	30%	39,801	1	12	39,801	13,267	26,534	56,859	-
4	2006	Location 32	30%	86,588	1	12	86,588	28,863	57,725	123,697	57,725
4	2006	Location 33	30%	44,409	1	12	44,409	14,803	29,606	63,441	29,606
4	2006	Location 34	30%	42,225	1	12	42,225	14,075	28,150	60,322	28,150
4	2006	Location 35	30%	52,548	1	12	52,548	17,516	35,032	75,068	35,032
4	2006	Location 36	30%	15,868	1	12	15,868	5,289	10,578	22,668	10,578
4	2006	Location 37	30%	5,958	1	12	5,958	1,986	3,972	8,511	3,972
4	2006	Location 38	30%	13,600	1	12	13,600	4,533	9,067	19,429	9,067
4	2006	Location 39	30%	16,688	1	12	16,688	5,563	11,125	23,840	11,125
4	2006	Location 40	30%	24,580	1	12	24,580	8,193	16,387	35,114	16,387
4	2006	Location 41	30%	5,470	1	12	5,470	1,823	3,647	7,814	3,647
4	2006	Location 42	30%	21,920	1	12	21,920	7,307	14,613	31,314	14,613
4	2006	Location 43	30%	36,546	1	12	36,546	12,182	24,364	52,208	24,364
4	2006	Location 44	30%	42,378	1	12	42,378	14,126	28,252	60,540	28,252
5	2006	Location 45	30%	44,096	1	12	44,096	14,699	29,397	62,994	25,723

1,512 kW Total 2,423,129 807,710 1,615,419 3,461,613 809,134

kWh SAVINGS CALCULATION for Project 8

Completion Month	Completion Year	Project	Free Ridership %	Annual kWh Savings as per OEB (net)	# of Participants	Total # of Completion Months to the End of 2007	Total kWh Savings to the End of 2007	kWh Savings Associated with 2006 Rates	kWh Savings Associated with 2007 Rates	Total kWh Savings to the End of 2007 (Gross of Freeriders)	Additional kWh Savings Associated with 2006 Rates
12	2006	Location 1	30%	43,960	1	12	43,960	14,653	29,307	62,800	-
1	2007	Location 2	30%	243,891	1	11	223,567	60,973	162,594	319,381	-
2	2007	Location 3	30%	399,540	1	10	332,950	66,590	266,360	475,643	-
9	2006	Location 4	30%	161,781	1	12	161,781	53,927	107,854	231,116	40,445
2	2007	Location 5	30%	305,850	1	10	254,875	50,975	203,900	364,107	-
6	2006	Location 6	30%	260,899	1	12	260,899	86,966	173,933	372,713	130,450
7	2006	Location 7	30%	302,037	1	12	302,037	100,679	201,358	431,481	125,849
Total							1,580,069	434,763	1,145,305	2,257,241	296,743
Grand Total							6,695,724	1,608,314	5,087,410	9,524,605	1,179,099

kWh SAVINGS CALCULATION for Load Displacement

Completion Month	Completion Year	Measure	Free Ridership %	Annual kWh Savings as per OEB (net)	# of Participants	Total # of Completion Months to the End of 2007	Total kWh Savings to the End of 2007	kWh Savings Associated with 2006 Rates	kWh Savings Associated with 2007 Rates	Total kWh Savings to the End of 2007 (Gross of Freeriders)
11	2006	Solar PV and system control	30%	1,426	1	12	1,426	475	951	2,038
11	2006	Wind System	30%	1,680	1	12	1,680	560	1,120	2,400
					3.6 kW	Total	3,106	1,035	2,071	4,438

Projects	Customer Class	kWh Savings in 2007 from 2005 & 2006 Projects	kWh Savings in 2006 from 2007 Projects	kWh Savings Associated with 2006 Rate	kWh Savings Associated with 2007 Rate
Project 1	Residential	50,318,813		16,772,938	33,545,875
Project 2	Residential	213,933		71,311	142,622
Project 3	Residential	23,753		7,918	15,835
Project 4	Residential	196,272		65,424	130,848
Project 5	Residential	2,705,274		901,758	1,803,516
Project 6	Residential	33,080,820		11,026,940	22,053,880
Mass Market Program	Residential	86,538,864		28,846,288	57,692,576
TAPS	Residential	9,005,161	100,990	3,102,710	6,003,441
Refrigerator Buy-back Program	Residential	2,708,408		902,803	1,805,606
Social Housing	Residential	3,112,450	18,894	1,056,377	2,074,967
LED Traffic Signals	Street Lighting	1,656,514	141,751	693,923	1,104,342
Project 7		651,419		217,140	434,279
Project 8		1,012,776		337,592	675,184
Project 9	GS 50-1000 kW	372,557		124,186	248,371
Project 10	GS 50-1000 kW	250,090		83,363	166,727
Project 11	GS 1000-5000 kW	977,956		325,985	651,971
Project 12	GS 50-1000 kW	552,584		184,195	368,389
Project 13	GS 50-1000 kW	200,918		66,973	133,946
Project 14	GS 50-1000 kW	1,441,123		480,374	960,749
Project 15	GS 50-1000 kW	1,344,704		448,235	896,469

Project 16	GS 1000-5000 kW	335,499	43,750	155,583	223,666
Project 17	50-1000 NI		29,472	29,472	
Project 18			809,134	809,134	
Project 19			298,685	298,685	
Project 20	<50 kW		245,000	245,000	
Project 21			333,480	333,480	
Leveraging Energy Conservation	-	7,139,626	1,759,521	4,139,396	4,759,751
Project 22	GS 1000-5000 kW	1,171,403		390,468	780,936
Project 23	Large Users > 5000 kW	4,225,309		1,408,436	2,816,873
Project 24	GS 1000-5000 kW	1,750,311		583,437	1,166,874
Project 25	GS 1000-5000 kW	3,321,171		1,107,057	2,214,114
Project 26	Large Users > 5000 kW	1,603,988		534,663	1,069,325
Project 27	GS 1000-5000 kW	1,931,474		643,825	1,287,649
Project 28	GS 1000-5000 kW	3,524,313		1,174,771	2,349,542
Project 29 - Solar			119	119	
Project 29 - Wind			140	140	
Load Displacement	-	17,527,970	259	5,842,915	11,685,313
TOTAL		127,688,993	2,021,414	44,584,412	85,125,995

THESL TRC Results for 2005 - Summary

Project	Measure Life (yrs.)	Free Ridership in Annual Report(%)	Free Ridership after OEB Decision (%)	Peak Demand Savings (kW)	Annual kWh Savings	Adjustments (reduction)	kWh Savings in 2007	Customer Class	kWh Savings Associated with 2006 Rate	kWh Savings Associated with 2007 Rate
Project 1	4, 6, 30	0, 5, 10	no change	3,231	50,318,813	-	50,318,813	Residential	16,772,938	33,545,875
Project 2	30	5	no change	0	45,818	-	45,818	Residential	15,273	30,545
Project 3	30	5	no change	0	23,753	-	23,753	Residential	7,918	15,835
Project 4	4	10	no change	0	196,272	-	196,272	Residential	65,424	130,848
Total Mass Market Program				3,231	50,584,655	-	50,584,655	Residential	16,861,552	33,723,103
TAPS	4, 6, 12, 18	10	no change	26	3,504,513	-	3,504,513	Residential	1,168,171	2,336,342
Refrigerator Buy-back Program	4, 5, 6	10, 50	no change	484	2,876,059	167,651	2,708,408	Residential	902,803	1,805,606
Project 7	5	10	30	163	837,539	186,120	651,419		217,140	434,279
Project 8	5	10	30	53	1,302,140	289,365	1,012,776		337,592	675,184
Leveraging Energy Conservation				215	2,139,679	475,484	1,664,195	-	554,732	1,109,463
Total				3,956	59,104,906	643,135	58,461,771	-	19,487,257	38,974,514

THESL TRC Results for 2006 - Summary

Project	Measure Life (yrs.)	Free Ridership in Annual Report(%)	Free Ridership after OEB Decision (%)	Peak Demand Savings (kW)	Annual kWh Savings	Adjustments (reduction)	kWh Savings in 2007	Customer Class	kWh Savings Associated with 2006 Rate	kWh Savings Associated with 2007 Rate
Project 5	6, 12	10	no change	455	2,705,274	-	2,705,274	Residential	901,758	1,803,516
Project 6	30	3, 4, 10, 18, 30	no change	333	33,080,820	-	33,080,820	Residential	11,026,940	22,053,880
Project 2	30	5	no change	0	168,115	-	168,115	Residential	56,038	112,077
Total Mass Market Program				788	35,954,209	-	35,954,209	Residential	11,984,736	23,969,473
TAPS	4, 6, 12, 18	10	no change	42	5,500,647		5,500,647	Residential	1,833,549	3,667,098
Social Housing	18, 19	0	1	399	3,143,889	31,439	3,112,450	Residential	1,037,483	2,074,967
LED Traffic Signals	25	10	30	189	2,129,803	473,290	1,656,514	LED Traffic Lights	552,171	1,104,342
Project 9	3	10	30	80	479,002	106,445	372,557	GS 50-1000 kW	124,186	248,371
Project 10	5	10	30	50	321,545	71,454	250,090	GS 50-1000 kW	83,363	166,727
Project 11	5	10	30	196	1,257,372	279,416	977,956	GS 1000-5000 kW	325,985	651,971
Project 12	4	10	30	117	710,465	157,881	552,584	GS 50-1000 kW	184,195	368,389
Project 13	3, 4, 5, 25	10	30	21	258,324	57,405	200,918	GS 50-1000 kW	66,973	133,946
Project 14	2, 5	10	30	268	1,852,872	411,749	1,441,123	GS 50-1000 kW	480,374	960,749
Project 15	3	10	30	165	1,728,905	384,201	1,344,704	GS 50-1000 kW	448,235	896,469
Project 16	0, 2, 4, 18	10	30	3	415,641	80,142	335,499	GS 1000-5000 kW	111,833	223,666
Leveraging Energy Conservation				900	7,024,126	1,548,695	5,475,432	-	1,825,144	3,650,288
Project 22	25	10	30	1,009	1,506,090	334,687	1,171,403	GS 1000-5000 kW	390,468	780,936
Project 23	25	10	30	1,973	5,432,540	1,207,231	4,225,309	Large Users > 5000 kW	1,408,436	2,816,873
Project 24	25	10	30	879	2,250,400	500,089	1,750,311	GS 1000-5000 kW	583,437	1,166,874
Project 25	25	10	30	1,551	4,270,077	948,906	3,321,171	GS 1000-5000 kW	1,107,057	2,214,114
Project 26	25	10	30	806	2,062,270	458,282	1,603,988	Large Users > 5000 kW	534,663	1,069,325
Project 27	25	10	30	970	2,483,324	551,850	1,931,474	GS 1000-5000 kW	643,825	1,287,649
Project 28	25	10	30	1,770	4,531,260	1,006,947	3,524,313	GS 1000-5000 kW	1,174,771	2,349,542
Load Displacement				8,957	22,535,961	5,007,991	17,527,970	-	5,842,657	11,685,313
Total				11,277	76,288,636	7,061,415	69,227,222	-	23,075,741	46,151,481

OPA Transition Plan kWh-LRAM

Program	Effective Date	Freeridership %	Customer Class	kW Savings(For Non-Residential)	kWh Savings(2006 Rate)	kWh Savings(2007 Rate)	Total kWh Savings	Additional kWh Savings (2006 Rate)
Enbridge TAPS	Jan. 07 - Nov. 07	10%	Residential	n/a	231,513	6,594,641	6,826,154	-
Social Housing	Mar. 07 - Dec. 07	1%	Residential	n/a	62,825	1,770,116	1,832,941	-
Leveraging Energy Conservation	Nov. 06 - Dec. 07	Expand Group	General Service	Expand Group	1,408,544	9,477,669	10,886,213	580,421
Project 1	Sept. 07 - Dec. 07	30%	General Service	see sheet	-	686,762	686,762	-
Project 2	Jun. 07	0%	General Service	n/a	-	53,333	53,333	-
Project 3	Sept. 07	30%	General Service	see sheet	-	1,822,497	1,822,497	-
Project 4	Oct. 07	30%	General Service	519	-	363,315	363,315	-
Project 5	Aug. 07	30%	General Service	242	-	282,333	282,333	-
Project 6	Jan. 07	30%	General Service	213	290,589	581,177	871,766	-
Project 7	Nov. 07	30%	General Service	279	-	129,967	129,967	-
Project 8	Oct. 07	30%	General Service	350	326,667	653,333	980,000	245,000
Project 9	Aug. 07	30%	General Service	292	-	423,360	423,360	-
Project 10	Nov. 06 - Nov. 07	30%	General Service	see sheet	124,329	2,238,069	2,362,398	1,941
Project 11	Nov. 06 - Jun. 07	30%	General Service	see sheet	666,960	2,243,523	2,910,483	333,480
Load Displacement	Apr. 07 - Sept. 07	30%	General Service	Expand Group	-	3,290,716	3,290,716	-
Project 12	Apr. 07	30%	General Service	100	-	214,620	214,620	-
Project 13	Sept. 07	30%	General Service	see sheet	-	2,804,963	2,804,963	-
Project 14	Jun. 07	30%	General Service	166	-	271,133	271,133	-
Commercial Dryer		30%	General Service	n/a	86,776	225,649	312,425	-
Mass Market	Jan. 07 - Jul. 07	30%	General Service	555,655	1,520,199	4,889,469	6,409,668	-
LED Traffic Lights	Nov. 06	30%	General Service	139	283,503	567,006	850,508	141,751
Stand-by Generators	Jul. 07 - Dec. 07	30%	General Service	Expand Group	-	3,946,555	3,946,555	-
Project 15	Jul. 07	30%	General Service	1,609	-	3,946,555	3,946,555	-
Project 16	Dec. 07	30%	General Service	n/a	-	-	-	-
Grand Total					3,593,360	30,761,820	34,355,180	722,173

TAPS kWh SAVINGS CALCULATION

Completion Month	Completion Year	Measure	Freeridership %	Annual kWh Savings as per OEB (net)	# of Measures	Total # of Completion Months to the End of 2007	Total kWh Savings to the End of 2007	kWh Savings Associated with 2006 Rates	kWh Savings Associated with 2007 Rates	Total kWh Savings to the End of 2007 (Gross of Freeriders)
6	2007	Efficient Showerheads	10%	491	364	6	89,345	-	89,345	99,273
6	2007	Pipewrap	10%	68	343	6	11,731	-	11,731	13,034
6	2007	Programable Thermostats	10%	1320	-	6	-	-	-	-
6	2007	CFLs - 14 watt	10%	96	10,802	6	518,755	-	518,755	576,395
6	2007	CFLs - 23 watt	10%	161	98	6	7,878	-	7,878	8,753
6	2007	Aerators	10%	30	688	6	10,414	-	10,414	11,571
5	2007	Efficient Showerheads	10%	491	497	7	142,323	-	142,323	158,136
5	2007	Pipewrap	10%	68	378	7	15,082	-	15,082	16,758
5	2007	Programable Thermostats	10%	1320	-	7	-	-	-	-
5	2007	CFLs - 14 watt	10%	96	13,596	7	761,757	-	761,757	846,396
5	2007	CFLs - 23 watt	10%	161	-	7	-	-	-	-
5	2007	Aerators	10%	30	756	7	13,350	-	13,350	14,834
4	2007	Efficient Showerheads	10%	491	4	8	1,309	-	1,309	1,455
4	2007	Pipewrap	10%	68	13	8	593	-	593	659
4	2007	Programable Thermostats	10%	1320	-	8	-	-	-	-
4	2007	CFLs - 14 watt	10%	96	700	8	44,822	-	44,822	49,803
4	2007	CFLs - 23 watt	10%	161	-	8	-	-	-	-
4	2007	Aerators	10%	30	36	8	727	-	727	807
7	2007	Efficient Showerheads	10%	491	456	5	93,273	-	93,273	103,636
7	2007	Pipewrap	10%	68	440	5	12,540	-	12,540	13,933
7	2007	Programable Thermostats	10%	1320	1	5	550	-	550	611
7	2007	CFLs - 14 watt	10%	96	15,720	5	629,114	-	629,114	699,016
7	2007	CFLs - 23 watt	10%	161	456	5	30,547	-	30,547	33,942
7	2007	Aerators	10%	30	880	5	11,100	-	11,100	12,333
4	2007	Efficient Showerheads	10%	491	413	8	135,164	-	135,164	150,182
4	2007	Pipewrap	10%	68	357	8	16,279	-	16,279	18,088
4	2007	Programable Thermostats	10%	1320	-	8	-	-	-	-
4	2007	CFLs - 14 watt	10%	96	11,740	8	751,736	-	751,736	835,262
4	2007	CFLs - 23 watt	10%	161	-	8	-	-	-	-
4	2007	Aerators	10%	30	714	8	14,410	-	14,410	16,011
2	2007	Efficient Showerheads	10%	491	75	10	30,682	6,136	24,545	34,091
2	2007	Pipewrap	10%	68	55	10	3,135	627	2,508	3,483
2	2007	Programable Thermostats	10%	1320	-	10	-	-	-	-
2	2007	CFLs - 14 watt	10%	96	4,728	10	378,429	75,686	302,743	420,477
2	2007	CFLs - 23 watt	10%	161	-	10	-	-	-	-
2	2007	Aerators	10%	30	110	10	2,775	555	2,220	3,083
3	2007	Efficient Showerheads	10%	491	264	9	97,200	10,800	86,400	108,000

TAPS kWh SAVINGS CALCULATION

Completion Month	Completion Year	Measure	Freeridership %	Annual kWh Savings as per OEB (net)	# of Measures	Total # of Completion Months to the End of 2007	Total kWh Savings to the End of 2007	kWh Savings Associated with 2006 Rates	kWh Savings Associated with 2007 Rates	Total kWh Savings to the End of 2007 (Gross of Freeriders)
3	2007	Pipewrap	10%	68	182	9	9,337	1,037	8,299	10,374
3	2007	Programable Thermostats	10%	1320	-	9	-	-	-	-
3	2007	CFLs - 14 watt	10%	96	15,744	9	1,134,135	126,015	1,008,120	1,260,150
3	2007	CFLs - 23 watt	10%	161	-	9	-	-	-	-
3	2007	Aerators	10%	30	368	9	8,355	928	7,427	9,284
12	2006	Efficient Showerheads	10%	491	1	12	491	164	327	545
12	2006	Pipewrap	10%	68	1	12	68	23	46	76
12	2006	Programable Thermostats	10%	1320	-	12	-	-	-	-
12	2006	CFLs - 14 watt	10%	96	284	12	27,278	9,093	18,185	30,308
12	2006	CFLs - 23 watt	10%	161	8	12	1,286	429	857	1,429
12	2006	Aerators	10%	30	2	12	61	20	40	67
6	2007	Efficient Showerheads	10%	491	1	6	245	-	245	273
6	2007	Pipewrap	10%	68	1	6	34	-	34	38
6	2007	Programable Thermostats	10%	1320	-	6	-	-	-	-
6	2007	CFLs - 14 watt	10%	96	60	6	2,881	-	2,881	3,202
6	2007	CFLs - 23 watt	10%	161	-	6	-	-	-	-
6	2007	Aerators	10%	30	2	6	30	-	30	34
8	2007	Efficient Showerheads	10%	491	258	4	42,218	-	42,218	46,909
8	2007	Pipewrap	10%	68	236	4	5,381	-	5,381	5,979
8	2007	Programable Thermostats	10%	1320	-	4	-	-	-	-
8	2007	CFLs - 14 watt	10%	96	18,804	4	602,029	-	602,029	668,921
8	2007	CFLs - 23 watt	10%	161	796	4	42,659	-	42,659	47,399
8	2007	Aerators	10%	30	472	4	4,763	-	4,763	5,292
9	2007	Efficient Showerheads	10%	491	357	3	43,814	-	43,814	48,682
9	2007	Pipewrap	10%	68	344	3	5,882	-	5,882	6,536
9	2007	Programable Thermostats	10%	1320	-	3	-	-	-	-
9	2007	CFLs - 14 watt	10%	96	41,674	3	1,000,676	-	1,000,676	1,111,862
9	2007	CFLs - 23 watt	10%	161	874	3	35,130	-	35,130	39,033
9	2007	Aerators	10%	30	690	3	5,222	-	5,222	5,802
10	2007	Efficient Showerheads	10%	491	1	2	82	-	82	91
10	2007	Pipewrap	10%	68	1	2	11	-	11	13
10	2007	Programable Thermostats	10%	1320	-	2	-	-	-	-
10	2007	CFLs - 14 watt	10%	96	192	2	3,074	-	3,074	3,415
10	2007	CFLs - 23 watt	10%	161	-	2	-	-	-	-
10	2007	Aerators	10%	30	2	2	10	-	10	11
9	2007	Efficient Showerheads	10%	491	54	3	6,627	-	6,627	7,364
9	2007	Pipewrap	10%	68	43	3	735	-	735	817

TAPS kWh SAVINGS CALCULATION

Completion Month	Completion Year	Measure	Freeridership %	Annual kWh Savings as per OEB (net)	# of Measures	Total # of Completion Months to the End of 2007	Total kWh Savings to the End of 2007	kWh Savings Associated with 2006 Rates	kWh Savings Associated with 2007 Rates	Total kWh Savings to the End of 2007 (Gross of Freeriders)	
9	2007	Programable Thermostats	10%	1320	-	3	-	-	-	-	
9	2007	CFLs - 14 watt	10%	96	714	3	17,145	-	17,145	19,050	
9	2007	CFLs - 23 watt	10%	161	22	3	884	-	884	983	
9	2007	Aerators	10%	30	78	3	590	-	590	656	
Total								6,826,154	231,513	6,594,641	7,584,615

SOCIAL HOUSING kWh SAVINGS CALCULATION

TORONTO COMMUNITY HOUSING CORPORATION kWh SAVINGS CALCULATION

Completion Month	Completion Year	Measure	Freeridership %	Annual kWh Savings as per OEB (net)	# of Measures	Total # of Completion Months to the End of 2007	Total kWh Savings to the End of 2007	kWh Savings Associated with 2006 Rates	kWh Savings Associated with 2007 Rates	Total kWh Savings to the End of 2007 (Gross of Freeriders)
3	2007	Energy Star Refrigerators	1%	73	752	9	41,319	4,591	36,728	41,736
3	2007	High Efficiency Range/Oven	1%	54	795	9	32,466	3,607	28,859	32,794
4	2007	Energy Star Refrigerators	1%	73	501	8	24,469	-	24,469	24,716
4	2007	High Efficiency Range/Oven	1%	54	520	8	18,876	-	18,876	19,067
5	2007	Energy Star Refrigerators	1%	73	685	7	29,273	-	29,273	29,569
5	2007	High Efficiency Range/Oven	1%	54	841	7	26,712	-	26,712	26,982
6	2007	Energy Star Refrigerators	1%	73	786	6	28,791	-	28,791	29,082
6	2007	High Efficiency Range/Oven	1%	54	821	6	22,352	-	22,352	22,578
7	2007	Energy Star Refrigerators	1%	73	201	5	6,136	-	6,136	6,198
7	2007	High Efficiency Range/Oven	1%	54	209	5	4,742	-	4,742	4,790
Total							235,135	8,198	226,937	237,510

TORONTO COMMUNITY HOUSING CORPORATION kWh SAVINGS CALCULATION

Completion Month	Completion Year	Location	Freeridership %	Annual kWh Savings as per OEB (net)	# of Participants	Total # of Completion Months to the End of 2007	Total kWh Savings to the End of 2007	kWh Savings Associated with 2006 Rates	kWh Savings Associated with 2007 Rates	Total kWh Savings to the End of 2007 (Gross of Freeriders)
10	2007	Location 1	1%	515,553	1	2	85,926	-	85,926	86,793
8	2007	Location 2	1%	206,534	1	4	68,845	-	68,845	69,540
6	2007	Location 3	1%	206,969	1	6	103,484	-	103,484	104,530
8	2007	Location 4	1%	103,372	1	4	34,457	-	34,457	34,805
12	2007	Location 5	1%	82,319	1	-	-	-	-	-
7	2007	Location 6	1%	577,530	1	5	240,637	-	240,637	243,068
8	2007	Location 7	1%	288,514	1	4	96,171	-	96,171	97,143
7	2007	Location 8	1%	239,791	1	5	99,913	-	99,913	100,922
4	2007	Location 9	1%	235,934	1	8	157,290	-	157,290	158,878
11	2007	Location 10	1%	1,950,629	1	1	162,552	-	162,552	164,194
2	2007	Location 11	1%	147,219	1	10	122,683	24,537	98,146	123,922
2	2007	Location 12	1%	180,541	1	10	150,451	30,090	120,361	151,971
11	2007	Location 13	1%	333,188	1	1	27,766	-	27,766	28,046
8	2007	Location 14	1%	384,926	1	4	128,309	-	128,309	129,605
8	2007	Location 15	1%	161,311	1	4	53,770	-	53,770	54,314
9	2007	Location 16	1%	138,578	1	3	34,644	-	34,644	34,994
10	2007	Location 17	1%	61,997	1	2	10,333	-	10,333	10,437
9	2007	Location 18	1%	82,300	1	3	20,575	-	20,575	20,783

Total		1,597,806	54,627	1,543,179	1,613,946
--------------	--	------------------	---------------	------------------	------------------

Grand Total		1,832,941	62,825	1,770,116	1,851,456
--------------------	--	------------------	---------------	------------------	------------------

LEVERAGING ENERGY CONSERVATION kWh SAVINGS CALCULATION

kWh SAVINGS CALCULATION for Project 1

Completion Month	Completion Year	Project/Location	Freeridership %	Annual kWh Savings as per OEB (net)	# of Participants	Total # of Completion Months to the End of 2007	Total kWh Savings to the End of 2007	kWh Savings Associated with 2006 Rates	kWh Savings Associated with 2007 Rates	Total kWh Savings to the End of 2007 (Gross of Freeriders)
8	2007	Location 1	30%	61,600	1	4	20,533	-	20,533	29,333
8	2007	Location 2	30%	50,400	1	4	16,800	-	16,800	24,000
8	2007	Location 3	30%	98,000	1	4	32,667	-	32,667	46,667
8	2007	Location 4	30%	62,927	1	4	20,976	-	20,976	29,965
8	2007	Location 5	30%	87,296	1	4	29,099	-	29,099	41,569
8	2007	Location 6	30%	182,145	1	4	60,715	-	60,715	86,736
8	2007	Location 7	30%	206,790	1	4	68,930	-	68,930	98,472
8	2007	Location 8	30%	666,400	1	4	222,133	-	222,133	317,333
8	2007	Location 9	30%	25,200	1	4	8,400	-	8,400	12,000
8	2007	Location 10	30%	567,672	1	4	189,224	-	189,224	270,320
11	2007	Location 11	30%	72,517	1	1	6,043	-	6,043	8,633
11	2007	Location 12	30%	104,244	1	1	8,687	-	8,687	12,410
11	2007	Location 13	30%	30,660	1	1	2,555	-	2,555	3,650
Total							686,762	-	686,762	981,088

kWh SAVINGS CALCULATION for Project 2

Completion Month	Completion Year	Measure	Freeridership %	Annual kWh Savings as per OEB (net)	# of Measures	Total # of Completion Months to the End of 2007	Total kWh Savings to the End of 2007	kWh Savings Associated with 2006 Rates	kWh Savings Associated with 2007 Rates	Total kWh Savings to the End of 2007 (Gross of Freeriders)
5	2007	Electric Hot Water Tank Conversion to Gas	0%	5,000	32	7	53,333	-	53,333	53,333
Total							53,333	-	53,333	53,333

kWh SAVINGS CALCULATION for Project 3

Completion Month	Completion Year	Project	Freeridership %	Annual kWh Savings as per OEB (net)	# of Participants	Total # of Completion Months to the End of 2007	Total kWh Savings to the End of 2007	kWh Savings Associated with 2006 Rates	kWh Savings Associated with 2007 Rates	Total kWh Savings to the End of 2007 (Gross of Freeriders)
8	2007	Location 1	30%	2,962,400	1	4	987,467	-	987,467	1,410,667
9	2007	Location 2	30%	1,105,720	1	3	276,430	-	276,430	394,900
12	2007	Location 3	30%	814,800	1	-	-	-	-	-
7	2007	Location 4	30%	1,055,600	1	5	439,833	-	439,833	628,333
11	2007	Location 5	30%	1,425,200	1	1	118,767	-	118,767	169,667
12	2007	Location 6	30%	537,600	1	-	-	-	-	-

Total		1,822,497	-	1,822,497	2,603,567
--------------	--	------------------	----------	------------------	------------------

kWh SAVINGS CALCULATION for Project 4

Completion Month	Completion Year	Project	Freeridership %	Annual kWh Savings as per OEB (net)	# of Participants	Total # of Completion Months to the End of 2007	Total kWh Savings to the End of 2007	kWh Savings Associated with 2006 Rates	kWh Savings Associated with 2007 Rates	Total kWh Savings to the End of 2007 (Gross of Freeriders)
9	2007	Lighting Retrofit	30%	1,453,259	1	3	363,315	-	363,315	519,021
Total							363,315	-	363,315	519,021

kWh SAVINGS CALCULATION for Project 5

Completion Month	Completion Year	Project	Freeridership %	Annual kWh Savings as per OEB (net)	# of Participants	Total # of Completion Months to the End of 2007	Total kWh Savings to the End of 2007	kWh Savings Associated with 2006 Rates	kWh Savings Associated with 2007 Rates	Total kWh Savings to the End of 2007 (Gross of Freeriders)
7	2007	Ice Storage Project	30%	677,600	1	5	282,333	-	282,333	403,333
Total							282,333	-	282,333	403,333

kWh SAVINGS CALCULATION for Project 6

Completion Month	Completion Year	Project	Freeridership %	Annual kWh Savings as per OEB (net)	# of Participants	Total # of Completion Months to the End of 2007	Total kWh Savings to the End of 2007	kWh Savings Associated with 2006 Rates	kWh Savings Associated with 2007 Rates	Total kWh Savings to the End of 2007 (Gross of Freeriders)
12	2006	Lighting Retrofit	30%	871,766	1	12	871,766	290,589	581,177	1,245,380
Total							871,766	290,589	581,177	1,245,380

kWh SAVINGS CALCULATION for Project 7

Completion Month	Completion Year	Project	Freeridership %	Annual kWh Savings as per OEB (net)	# of Participants	Total # of Completion Months to the End of 2007	Total kWh Savings to the End of 2007	kWh Savings Associated with 2006 Rates	kWh Savings Associated with 2007 Rates	Total kWh Savings to the End of 2007 (Gross of Freeriders)
10	2007	Lighting Retrofit	30%	779,800	1	2	129,967	-	129,967	185,667
Total							129,967	-	129,967	185,667

kWh SAVINGS CALCULATION for Project 8

Completion Month	Completion Year	Project	Freeridership %	Annual kWh Savings as per OEB (net)	# of Participants	Total # of Completion Months to the End of 2007	Total kWh Savings to the End of 2007	kWh Savings Associated with 2006 Rates	kWh Savings Associated with 2007 Rates	Total kWh Savings to the End of 2007 (Gross of Freeriders)	Additional kWh Savings Associated with 2006 Rates
9	2006	Conservation Project	30%	980,000	1	12	980,000	326,667	653,333	1,400,000	245,000
Total							980,000	326,667	653,333	1,400,000	245,000

kWh SAVINGS CALCULATION for Project 9

Completion Month	Completion Year	Project	Freeridership %	Annual kWh Savings as per OEB (net)	# of Participants	Total # of Completion Months to the End of 2007	Total kWh Savings to the End of 2007	kWh Savings Associated with 2006 Rates	kWh Savings Associated with 2007 Rates	Total kWh Savings to the End of 2007 (Gross of Freeriders)
7	2007	Fuel Conversion Project	30%	646,800	1	5	269,500	-	269,500	385,000
7	2007	Lighting Retrofit Project	30%	369,264	1	5	153,860	-	153,860	219,800
Total							423,360	-	423,360	604,800

kWh SAVINGS CALCULATION for Project 10

Completion Month	Completion Year	Project/Location	Freeridership %	Annual kWh Savings as per OEB (net)	# of Participants	Total # of Completion Months to the End of 2007	Total kWh Savings to the End of 2007	kWh Savings Associated with 2006 Rates	kWh Savings Associated with 2007 Rates	Total kWh Savings to the End of 2007 (Gross of Freeriders)	Additional kWh Savings Associated with 2006 Rates
2	2007	Location 1	30%	303,612	1	10	253,010	50,602	202,408	361,443	-
2	2007	Location 2	30%	58,139	1	10	48,449	9,690	38,759	69,213	-
7	2007	Location 3	30%	145,255	1	5	60,523	-	60,523	86,461	-
7	2007	Location 4	30%	43,782	1	5	18,243	-	18,243	26,061	-
6	2007	Location 5	30%	40,236	1	6	20,118	-	20,118	28,740	-
6	2007	Location 6	30%	97,552	1	6	48,776	-	48,776	69,680	-
1	2007	Location 7	30%	28,280	1	11	25,923	7,070	18,853	37,033	-
6	2007	Location 8	30%	177,464	1	6	88,732	-	88,732	126,760	-
6	2007	Location 9	30%	491,999	1	6	246,000	-	246,000	351,428	-
6	2007	Location 10	30%	696,032	1	6	348,016	-	348,016	497,166	-
6	2007	Location 11	30%	63,795	1	6	31,898	-	31,898	45,568	-
6	2007	Location 12	30%	161,260	1	6	80,630	-	80,630	115,186	-
6	2007	Location 13	30%	162,915	1	6	81,458	-	81,458	116,368	-
6	2007	Location 14	30%	161,087	1	6	80,543	-	80,543	115,062	-
1	2007	Location 15	30%	46,816	1	11	42,915	11,704	31,211	61,307	-
1	2007	Location 16	30%	32,844	1	11	30,107	8,211	21,896	43,010	-
1	2007	Location 17	30%	36,260	1	11	33,238	9,065	24,173	47,483	-
6	2007	Location 18	30%	85,260	1	6	42,630	-	42,630	60,900	-
6	2007	Location 19	30%	139,860	1	6	69,930	-	69,930	99,900	-
6	2007	Location 20	30%	242,970	1	6	121,485	-	121,485	173,550	-
6	2007	Location 21	30%	184,184	1	6	92,092	-	92,092	131,560	-
6	2007	Location 22	30%	281,960	1	6	140,980	-	140,980	201,400	-
6	2007	Location 23	30%	319,438	1	6	159,719	-	159,719	228,170	-
3	2007	Location 24	30%	72,240	1	9	54,180	6,020	48,160	77,400	-
2	2007	Location 25	30%	65,520	1	10	54,600	10,920	43,680	78,000	-
10	2006	Location 26	30%	11,648	1	12	11,648	3,883	7,765	16,640	1,941
3	2007	Location 27	30%	50,400	1	9	37,800	4,200	33,600	54,000	-
10	2007	Location 28	30%	44,800	1	2	7,467	-	7,467	10,667	-
3	2007	Location 29	30%	35,570	1	9	26,677	2,964	23,713	38,110	-
10	2007	Location 30	30%	27,664	1	2	4,611	-	4,611	6,587	-
Total							2,362,398	124,329	2,238,069	3,374,854	1,941

kWh SAVINGS CALCULATION for Project 11

Completion Month	Completion Year	Project	Freeridership %	Annual kWh Savings as per OEB (net)	# of Participants	Total # of Completion Months to the End of 2007	Total kWh Savings to the End of 2007	kWh Savings Associated with 2006 Rates	kWh Savings Associated with 2007 Rates	Total kWh Savings to the End of 2007 (Gross of Freeriders)	Additional kWh Savings Associated with 2006 Rates
5	2007	Location 1	30%	1,251,040	1	7	729,773	-	729,773	1,042,533	-
10	2006	Location 2	30%	385,840	1	12	385,840	128,613	257,227	551,200	64,307
5	2007	Location 3	30%	308,280	1	7	179,830	-	179,830	256,900	-
10	2006	Location 4	30%	265,440	1	12	265,440	88,480	176,960	379,200	44,240
10	2006	Location 5	30%	1,349,600	1	12	1,349,600	449,867	899,733	1,928,000	224,933
Total							2,910,483	666,960	2,243,523	4,157,833	333,480
Grand Total							10,886,213	1,408,544	9,477,669	15,528,876	580,421

LOAD DISPLACEMENT kWh SAVINGS CALCULATION

kWh SAVINGS CALCULATION for Project 12

Completion Month	Completion Year	Measure	Freeridership %	Annual kWh Savings as per OEB (net)	# of Measures	Total # of Completion Months to the End of 2007	Total kWh Savings to the End of 2007	kWh Savings Associated with 2006 Rates	kWh Savings Associated with 2007 Rates	Total kWh Savings to the End of 2007 (Gross of Freeriders)
5	2007	Photovoltaic Installation	30%	367,920	1	7	214,620	-	214,620	306,600
Total							214,620	-	214,620	306,600

kWh SAVINGS CALCULATION for Project 13

Completion Month	Completion Year	Project	Freeridership %	Annual kWh Savings as per OEB (net)	# of Participants	Total # of Completion Months to the End of 2007	Total kWh Savings to the End of 2007	kWh Savings Associated with 2006 Rates	kWh Savings Associated with 2007 Rates	Total kWh Savings to the End of 2007 (Gross of Freeriders)
8	2007	Location 1	30%	1,123,668	1	4	374,556	-	374,556	535,080
8	2007	Location 2	30%	2,880,514	1	4	960,171	-	960,171	1,371,673
8	2007	Location 3	30%	1,862,196	1	4	620,732	-	620,732	886,760
8	2007	Location 4	30%	2,548,510	1	4	849,503	-	849,503	1,213,576
Total							2,804,963	-	2,804,963	4,007,089

kWh SAVINGS CALCULATION for Project 14

Completion Month	Completion Year	Measure	Freeridership %	Annual kWh Savings as per OEB (net)	# of Measures	Total # of Completion Months to the End of 2007	Total kWh Savings to the End of 2007	kWh Savings Associated with 2006 Rates	kWh Savings Associated with 2007 Rates	Total kWh Savings to the End of 2007 (Gross of Freeriders)
5	2007	Envirotower	30%	464,800	1	7	271,133	-	271,133	387,333
Total							271,133	-	271,133	387,333
Grand Total							3,290,716	-	3,290,716	4,701,023

Completion Month	Completion Year	Location/Project	Annual kWh Savings as per OEB (net)	# of Participants	Total # of Completion Months to the End of 2007	Total kWh Savings to the End of 2007	kWh Savings Associated with 2006 Rates	kWh Savings Associated with 2007 Rates
9	2007	2007 Commercial Dryer Program	641	325	3	52,098	-	52,098
12	2006	2006 Commercial Dryer Program	641	406	12	260,327	86,776	173,551
12	2007	2007 Commercial Dryer Program	641	201	-	-	-	-
Total						312,425	86,776	225,649

MASS MARKET kWh SAVINGS CALCULATION

Home Depot

Completion Month	Completion Year	Project	Freeridership %	Annual kWh Savings as per OEB (net)	# of Participants	Total # of Completion Months to the End of 2007	Total kWh Savings to the End of 2007	kWh Savings Associated with 2006 Rates	kWh Savings Associated with 2007 Rates	Total kWh Savings to the End of 2007 (Gross of Freeriders)	
12	2006	Lighting retrofits	30%	4,560,597	1	12	4,560,597	1,520,199	3,040,398	6,515,139	
6	2007	Keep Cool	30%	1,849,070	1	n/a	1,849,070	n/a	1,849,070	2,641,529	
Total							Total	6,409,668	1,520,199	4,889,469	9,156,668

CITY OF TORONTO kWh SAVINGS CALCULATION

LED Traffic Lights kWh SAVINGS CALCULATION

Completion Month	Completion Year	Measure	Freeridership %	Annual kWh Savings as per OEB (net)	# of Measures	Total # of Completion Months to the End of 2007	Total kWh Savings to the End of 2007	kWh Savings Associated with 2006 Rates	kWh Savings Associated with 2007 Rates	Total kWh Savings to the End of 2007 (Gross of Freeriders)	Additional kWh Savings Associated with 2006 Rates
10	2006	Traffic Signal Lamps LED Conversion	30%	850,508	1	12	850,508	283,503	567,006	1,215,012	141,751

30% Freeridership Address: Numerous Locations

Total		850,508	283,503	567,006	1,215,012	141,751
--------------	--	----------------	----------------	----------------	------------------	----------------

STAND-BY GENERATORS kWh SAVINGS CALCULATION

kWh SAVINGS CALCULATION for Project 15

Completion Month	Completion Year	Measure	Freeridership %	Annual kWh Savings as per OEB (net)	# of Measures	Total # of Completion Months to the End of 2007	Total kWh Savings to the End of 2007	kWh Savings Associated with 2006 Rates	kWh Savings Associated with 2007 Rates	Total kWh Savings to the End of 2007 (Gross of Freeriders)	
6	2007	Tri-gen	30%	7,893,110	1	6	3,946,555	-	3,946,555	5,637,936	
Total								3,946,555	-	3,946,555	5,637,936

kWh SAVINGS CALCULATION for Project 16

Completion Month	Completion Year	Measure	Freeridership %	Annual kWh Savings as per OEB (net)	# of Measures	Total # of Completion Months to the End of 2007	Total kWh Savings to the End of 2007	kWh Savings Associated with 2006 Rates	kWh Savings Associated with 2007 Rates	Total kWh Savings to the End of 2007 (Gross of Freeriders)	
12	2007	Co-gen Gas Turbine	30%	36,792,000	1	-	-	-	-	-	
Total								-	-	-	-
Grand Total								3,946,555	-	3,946,555	5,637,936

OPA New Programs kWh-LRAM

Program	Effective Date	Freeridership %	Customer Class	kW Savings (For Non-Residential)	kWh Savings (2006 Rate)	kWh Savings (2007 Rate)	Total kWh Savings
BIP	Nov. 07 - Dec. 07	30%	General Services	see sheet	-	299,803	299,803
Low Income	Dec. 07	1%	Residential	n/a	-	195,948	195,948
Mass Market	Jan. 08	5%	Residential	n/a	-	265,492	265,492
Business Summer Savings	Oct. 07	10%	General Services	see sheet	-	19,260,361	19,260,361
Grand Total					-	20,021,604	20,021,604

BIP kWh SAVINGS CALCULATION

Completion Month	Completion Year	Project/Location	Freeridership %	Annual kWh Savings as per OEB (net)	# of Participants	Total # of Completion Months to the End of 2007	Total kWh Savings to the End of 2007	kWh Savings Associated with 2006 Rates	kWh Savings Associated with 2007 Rates	Total kWh Savings to the End of 2007 (Gross of Freeriders)
12	2007	Location 1	30%	72,568	1	-	-	-	-	-
12	2007	Location 2	30%	157,920	1	-	-	-	-	-
12	2007	Location 3	30%	165,480	1	-	-	-	-	-
12	2007	Location 4	30%	40,194	1	-	-	-	-	-
12	2007	Location 5	30%	20,706	1	-	-	-	-	-
12	2007	Location 6	30%	39,501	1	-	-	-	-	-
10	2007	Location 7	30%	114,008	1	2	19,001	-	19,001	27,145
11	2007	Location 8	30%	20,936	1	1	1,745	-	1,745	2,492
11	2007	Location 9	30%	14,784	1	1	1,232	-	1,232	1,760
11	2007	Location 10	30%	114,352	1	1	9,529	-	9,529	13,613
11	2007	Location 11	30%	74,592	1	1	6,216	-	6,216	8,880
11	2007	Location 12	30%	140,140	1	1	11,678	-	11,678	16,683
11	2007	Location 13	30%	293,972	1	1	24,498	-	24,498	34,997
11	2007	Location 14	30%	167,552	1	1	13,963	-	13,963	19,947
11	2007	Location 15	30%	374,696	1	1	31,225	-	31,225	44,607
11	2007	Location 16	30%	274,176	1	1	22,848	-	22,848	32,640
11	2007	Location 17	30%	281,792	1	1	23,483	-	23,483	33,547
11	2007	Location 18	30%	336,616	1	1	28,051	-	28,051	40,073
11	2007	Location 19	30%	83,776	1	1	6,981	-	6,981	9,973
10	2007	Location 20	30%	82,124	1	2	13,687	-	13,687	19,553
10	2007	Location 21	30%	49,000	1	2	8,167	-	8,167	11,667
10	2007	Location 22	30%	175,280	1	2	29,213	-	29,213	41,733
11	2007	Location 23	30%	193,452	1	1	16,121	-	16,121	23,030
11	2007	Location 24	30%	320,841	1	1	26,737	-	26,737	38,195
11	2007	Location 25	30%	65,142	1	1	5,429	-	5,429	7,755
Total							299,803	-	299,803	428,291

Low Income kWh SAVINGS CALCULATION

Completion Month	Completion Year	Project/Location	Freeridership %	Annual kWh Savings as per OEB (net)	# of Participants	Total # of Completion Months to the End of 2007	Total kWh Savings to the End of 2007	kWh Savings Associated with 2006 Rates	kWh Savings Associated with 2007 Rates	Total kWh Savings to the End of 2007 (Gross of Freeriders)
11	2007	In-suite light bulb exchange	1%	2,351,375	1	1	195,948	-	195,948	197,927
Total							195,948	-	195,948	197,927

Mass Market kWh SAVINGS CALCULATION

Completion Month	Completion Year	Project	Freeridership %	Annual kWh Savings as per OEB (net)	# of Participants	Total # of Completion Months to the End of 2007	Total kWh Savings to the End of 2007	kWh Savings Associated with 2006 Rates	kWh Savings Associated with 2007 Rates	Total kWh Savings to the End of 2007 (Gross of Freeriders)	
12	2007	Project 1	5%	265,492	1	-	265,492	-	265,492	279,465	
Total								265,492	-	265,492	279,465

Business Summer Savings kWh SAVINGS CALCULATION

Completion Month	Completion Year	Project/Location	Freeridership %	Annual kWh Savings as per OEB	# of Participants	Total # of Completion Months to the End of 2007	Total kWh Savings to the End of 2007	kWh Savings Associated with 2006 Rates	kWh Savings Associated with 2007 Rates	Total kWh Savings to the End of 2007 (Gross of Freeriders)	Service Type	
9	2007	Business Summer Savings	78%	3,452,719	1	3	3,452,719	-	3,452,719	15,738,199	200 GS<50kW Non-interval meter	
9	2007	Business Summer Savings	78%	1,043,733	1	3	1,043,733	-	1,043,733	4,757,550	310 GS 50-1000kW,C1/C2 meter	
9	2007	Business Summer Savings	78%	3,803,173	1	3	3,803,173	-	3,803,173	17,335,642	330 GS 50-1000 kW,C3/C8/C9/T1 meter	
9	2007	Business Summer Savings	78%	3,280,543	1	3	3,280,543	-	3,280,543	14,953,387	350 GS 50-1000 kW,interval meter	
9	2007	Business Summer Savings	78%	5,007,695	1	3	5,007,695	-	5,007,695	22,826,099	450 GS 1000-5000 kW	
9	2007	Business Summer Savings	78%	2,672,498	1	3	2,672,498	-	2,672,498	12,181,792	550 LU >5000 kW	
Total								19,260,361	-	19,260,361	87,792,670	

OPA Standard Program kWh-LRAM

Program	Effective Date	Freeridership %	Customer Class	kW Savings (For Non-Residential)	kWh Savings (2006 Rate)	kWh Savings (2007 Rate)	Total kWh Savings
The Great Refrigerator Roundup	Dec. 07	10%	Residential	n/a	-	853,625	853,625
Residential Summer Savings	Oct. 07	10%	Residential	n/a	-	12,643,000	12,643,000
Every Kilowatt Counts	Jun. 07	30%	Residential	n/a	-	3,857,362	3,857,362
Grand Total					-	17,353,987	17,353,987

Refrigerator Roundup kWh SAVINGS CALCULATION

Completion Month	Completion Year	Project/Location	Freeridership %	Annual kWh Savings as per OEB (net)	# of Participants	Total # of Completion Months to the End of 2007	Total kWh Savings to the End of 2007	kWh Savings Associated with 2006 Rates	kWh Savings Associated with 2007 Rates	Total kWh Savings to the End of 2007 (Gross of Freeriders)
10	2007	The Great Refrigerator Roundup	10%	5,121,751	1	2	853,625	-	853,625	948,472
Total							853,625	-	853,625	948,472

Residential Summer Savings kWh SAVINGS CALCULATION

Completion Month	Completion Year	Project/Location	Freeridership %	Annual kWh Savings as per OEB (net)	# of Participants	Total # of Completion Months to the End of 2007	Total kWh Savings to the End of 2007	kWh Savings Associated with 2006 Rates	kWh Savings Associated with 2007 Rates	Total kWh Savings to the End of 2007 (Gross of Freeriders)
9	2007	Residential Summer Savings	78%	57,629,384	1	3	12,643,000	-	12,643,000	14,047,778
Total							12,643,000	-	12,643,000	14,047,778

Every Kilowatt Counts kWh SAVINGS CALCULATION

Completion Month	Completion Year	Project/Location	Freeridership %	Annual kWh Savings as per OEB (net)	# of Participants	Total # of Completion Months to the End of 2007	Total kWh Savings to the End of 2007	kWh Savings Associated with 2006 Rates	kWh Savings Associated with 2007 Rates	Total kWh Savings to the End of 2007 (Gross of Freeriders)
6	2007	Ceiling Fans	30%	72	2,336	6	83,722	-	83,722	119,603
6	2007	CFL's	30%	31	212,972	6	3,302,125	-	3,302,125	4,717,322
6	2007	Dimmer Switch	30%	17	3,406	6	28,253	-	28,253	40,361
6	2007	Furnace Filters	30%	74	3,170	6	116,965	-	116,965	167,092
6	2007	Outdoor Motion Sensors	30%	113	3,146	6	177,387	-	177,387	253,410
6	2007	Outdoor Solar Lights	30%	7	43,414	6	148,910	-	148,910	212,729
Total							3,857,362	-	3,857,362	5,510,517

2007 Cavalcade of Lights Neighbourhood Seasonal LED Exchange, Final Report

The 2007 Cavalcade of Lights, “Neighbourhood Seasonal LED (SLED) Exchange” program was the fourth such initiated by Toronto Hydro through a number of neighbourhoods in the city of Toronto in as many years and the third year of a partnership between The Toronto Association of Business Improvement Areas (TABIA) and Toronto Hydro-Electric System Limited (TH) in the delivery of same.

The program while simple in its concept and design, thus resulting in ease of understanding and adaptation by the public has also proven to be very effective in its primary goal of energy conservation, education and in removing watts from the grid specifically.

Taking advantage of established and developing BIA Cavalcade of Lights event launches in a number of neighbourhoods across the city where the local business communities have invested in decorating their main streets and neighbourhoods with energy efficient seasonal LED string lights and motifs the Toronto Hydro SLED Exchange program is a natural complimentary ad on to these events.

Through this initiative Toronto Residents are invited to participate in energy conservation by bringing two old sets of their incandescent seasonal lighting strings to these events in exchange for a FREE set of LED seasonal lights. To further deliver the message of conservation, while exchanging their lights the public is introduced to a very effective display consisting of two meters one measuring the draw of a set of incandescent lights and the other the draw of two sets of LEDs, the digital display clearly shows the consumption difference in an easy to see and understand format, leaving numerous individuals shocked by the difference and associated savings. In addition, energy conservation tips and coupons are also given to those attending thus further engaging them into energy conservation be it through a better understanding of additional energy conservation programs that are available to them through TH or through the discounted purchase of energy efficient products as a result of the take away coupons.

It’s also important to note that the public is also advised of the responsible disposal of the old incandescent sets that are collected at each event, these sets are forwarded to a recycling facility for the purpose of separating the copper from the plastics/polymers both of which are subsequently used in production of a variety of materials, thus continuing the theme of energy conservation.

Site Selection:

As has occurred in previous years there was an initial planned increase of locations from 16 in 2006 to 18 this year. This was done in an attempt to facilitate some of the requests received by both TH and TABIA to hold exchanges in neighbourhoods that didn’t experience same previously. While it appears that only two new areas/neighbourhoods were added, in actual fact this reflects the introduction of the program in four new areas as two previous locations were not included in this years program, as a result the following 18 locations were selected and budgeted for in the planning meetings.

Neighbourhood Launch Dates and Locations– Cavalcade 2007

DATE	TIME	BIA	Address
Thursday, November 8 th	6- 8	Chinatown BIA Stephen Chan (416) 979-3988	Dundas(East of Spadina) At “Green P” Parking lot (Chinese Dragon)
Saturday November 10 th	6- 8	Gerrard India Bazaar BIA Subbu Chintaluri (416) 465-8513	N-W Corner Gerrard and Ashdale Rd (Library) 1432 Gerrard St @ Ashdale after 2:00
Wednesday, November 14 th	6- 8	Little Italy BIA Grace Russo (647) 830-6860	Johnny Lombardi Parkette (College @ Grace) ScotiaBank
Thursday, November 15	6- 8	Bloor West Village	Alex Ling Fountain (N-W Corner of Bloor St. West and Jane St)
Friday November 16 th	6- 8	Kingsway BIA Franca (416) 239-8243	N-W Corner Royal York Road & Bloor St.W
Friday November 16 th ,	6- 8	St. Clair Gardens BIA	St. Clair Gardens Park (St. Clair west of CNR Bridge) Hydro field on St. Clair W @ Prescott
Saturday November 17 th	6- 8	Albion-Islington Corners BIA Shalini (647) 898-3267	South – East corner Albion Road and Islington City Councillor Office 996 Albion Rd., after 2:00 pm
Saturday November 17 th	4- 6	Bloor Yorkville BIA Rick (416) 928-3553 X24	Village of Yorkville Park 99 - 139 Cumberland Vee Papadimos – after 3:30pm
Saturday November 17 th	2- 4	Downsview Park 416-952-2222	Downsview Park, Keele and Sheppard West - Discovery Center 1-35 Carl Hall Rd
Saturday November 17 th	6- 8	Greektown BIA George (416) 461-2424	Alexander the Great Parkette (Danforth at Logan) 484 Danforth Ave.
Saturday November 17 th	6- 8	Junction BIA Chris (416) 767-9068	Dundas Ave, West @ Pacific Ave Acme Candy 2978 Dundas St. West
Saturday November 17 th	6- 8	Korea Town BIA Sam - 416-533-9331	Bloor St. West at Christie 1 Christie St,
Saturday November 17 th	6- 8	Rosedale Summerhill BIA Kathryn (647) 668-5284	Rosedale LLBO 10 Scrivner Square
Saturday November 17 th	10- 1	St. Lawrence Market BIA Bob Kemp 416-731-4260 Al 416- 410-9242	The Kitchen at the St. Lawrence Market – South Market 91 Front St. @ Jarvis
Saturday November 17 th	6- 8	Wexford Heights BIA Linda (416) 288-1718	Green P Lot, Lawrence Ave, E (Between Elinor Av. & Tower Dr.) 1940/1950 Lawrence Ave. E @ 5:00 pm
Sunday November 18 th	6- 8	Queensquay-Harbourfront BIA Karen (416) 698-2147 C 416-400-4280	HTO Park.(Queens Quay west of Police Marine Unit & Radisson) at Fire Hall 339 Queensquay.
Thursday November 29 th	6- 8	Riverside District BIA Elizabeth - (416) 466-8167	791 Queen St. E @ Degrassi (West of CN tracks)
Saturday	4- 6	Beach BIA Deborah	Kew Gardens at Queen St. E & Lee Ave. Library at 2161 Queen St. East

Upon posting of the selected venues a number of additional requests for Neighbourhood SLED exchanges were received by TH. Upon review of same by both TH and TABIA it was agreed that it was in everyone's interest to include five (5) additional events/venues keeping in mind the impact of the additional costs within the previously agreed upon budget which could/would result in some minor re-allocations/adjustments and an undertaking by the organizers at the new locations to assist in the promotion of the events at their expense and most importantly not to hold their event on Saturday November 17th as there were already 9 events scheduled for that date.

As a result the 2007 Neighbourhood SLED exchange program took place at 23 venues, including beyond the above noted, Roncesvalles Village BIA per Councillor Gord Perks, Don Valley East per M.P.P. David Caplan, Emery Village per Councillor Mammoliti, Mimico by the Lake BIA per Councillor Mark Grimes and Scarborough - Agincourt per Minister of Energy Gerry Phillips.

The introduction of these additional events didn't have a significant impact on the logistics of the overall project as they were scattered among or post the previously selected dates and most importantly didn't take place on Saturday November 17th where as noted we would not have been able to accommodate them due to the number of events already taking place that day.

Ample product was available to cover the possible demand of the additional events as due to the anticipated delivery delay of the 10,000 sets required for the program an additional 1,500 sets were purchased from a local retailer to accommodate the first two events of the year as their selected dates fell outside of the previous years first event date. Volunteers and team leaders were available to fulfill the obligations at these additional events through the network of GreenTbiz and were delivered to the standards of both TH and TABIA.

Planning:

As in past years we continued to introduce best practices learned from previous year's events in this years planning, the simple fact still remains that due to the nature of these event(s) and their link to the City of Toronto Cavalcade of lights TABIA was/is dependant upon other organizations in a number of areas to fulfill its obligation under the contract, including but not limited to;

1. The setting of dates of the events, due to their link to the Cavalcade of lights the available dates to hold the exchange events are limited by the City of Toronto events office window of opportunity and are designed not to conflict with the Nathan Phillips square first lighting event. As a result BIAs are left having to select among a limited number of available days for their event creating a need for a significant number of events taking place on the preceding Saturday to the city of Toronto event (this year that was November 17th).
2. Upon setting of a date individual BIAs are asked to provide an event time and site location, timely responses and appropriate location choices continue to be an issue as it is the desire of the individuals BIAs to set the parameters in their interest without consideration on the overall effect of the program. Beyond site and time selection BIAs are also asked to secure a number of on site requirements, the most important of which is to provide an electrical supply for the primary purpose of fulfilling the educational component of the program as well as lighting the display area, in several applications this caused some difficulty as the

selected exchange area by the BIA was not able to provide electricity, thus failing to fulfill their obligation.

The selection of Dates, Events and Venues continues to require considerably more planning and thought. Even though BIA's are members of TABIA it is recommended that some not be engaged in future initiatives of this nature. Reason being, in some instances after two and in some cases three years there is no longer a significant enough supply of old sets in those neighbourhoods to warrant an exchange, for others their display investment/selection is not such that generates interest and others are simply located in areas that simply don't lend them selves to this type of initiative. Specifically the downtown locations of Bloor Yorkville and St. Lawrence Market Neighbourhood should be reviewed

Storing materials at the TH facility on Carlton proved yet again to work well not only due to its central proximity to all venues but also for its loading dock and flexible access. As set out during the planning stage significantly modified recycling plan undertaken by the TH drivers and staff proved to be more effective and resulted in early pick up of materials from sites thus avoiding any complaints about residual materials being left on site longer then necessary, the plan also facilitated for next day pick up at some pre arranged locations which was fulfilled flawlessly.

The overwhelming response at the Wexford BIA event did result in not only filling the expected TH truck allocation but also required the use of the back of a two ton pick up to accommodate the delivery of recovered sets to the processing facility, while a welcome occurrence around the success of the program, it is identified and highlighted for future planning and consideration in accommodating what effectively is a traveling road show, especially on the Saturday that sees the implementation of the program at 9 locations.

A comprehensive Operations Order, Training Plan, Training Presentations and Handouts were developed by TABIA's GreenTbiz delivery unit for all Stakeholders and participants; these were forwarded under separate submissions through the project period and could be referred to as necessary as part of this submission.

Logistics and Operations:

Similar to other events the logistics surrounding out door events are significantly different then those observed at exchanges in retail staged locations, where everyone is indoors with all facilities and needs readily available, including the removal of materials to be recycled. This year five(5) of the 23 events were held inside providing a much appreciated warm setting in which to work (Emery Village, Riverside, St. Lawrence Market, Scarborough – Agincourt and Don Valley East). That said, the largest challenge proved yet again to be the weather, rain at the first ever event in Chinatown and the first bitter cold spell of the year at the Gerrard India Bazaar was disheartening for the crews attending.

Over all while experiencing several additional days of extremely cold weather all events did take place on said dates and times and meet expectations. They were fully staffed and all had the required materials, including First Aid kits to fulfil a successful event. All events posted the provided Toronto Hydro bunting either on the caravan tents or as skirts on tables.

In order to facilitate the calculation of **actual savings** versus deemed savings as is done in other exchanges we continued to include the audit process of removing the plug and 1st lamp off all

redeemed sets. While this increased the on site handling significantly it's still the only way to truly determine true savings generated by the initiative (as per appendix A).

A Venue Layout plan was prepared taking into account last years findings and was tested at the first venue. The process was re-evaluated and the venue layouts were enhanced by separating recycling from distribution, as well as employing in line welcome ambassadors who asked those in line to assist us by taking their sets out of their bags with the plugs exposed to the 1st. lamp. As noted in the overview the associated displays (meters indicating watt consumption of traditional incandescent sets vs. LED sets) proved to be of great interest to those attending, additionally print collateral provided by TH was also distributed, including coupons for additional savings on LEDs and other products resulting in additional deemed savings.

A one night training session of volunteer staff prior to the commencement of the events proved once again to be invaluable. Training the TEV staff and on site TH supervisors resulted in an increase of on site efficiency. Not only were they able to handle the set up and exchange component, they were also able to answer questions regarding LED technology and associated energy savings. While paid staff was retained in order to support the volunteer base due to the numbers of events taking place on the Saturday specifically, over all this years exchanges were done with a majority of volunteers.

Advertising, Communications, Marketing & Promotions:

As was agreed all advertising/promotion was approved by TH staff prior to implementation and in all circumstances was either designed or received final approval from TH. In addition to the traditional advertising in local community papers and publications which identified the exchange locations, times and restrictions, proving yet again that this is the most effective way of promoting this type of community centric event (proved by the number of people bringing cut outs of the ad to the event) a limited number of radio spots were used to ascertain its effectiveness and value for possible future implementation. A straw pole of on site visitors asking them how they heard about the event yields the conclusion that radio promotion for this type of community/Neighbourhood specific initiative is not ideal. This is further substantiated since these events are restricted to Toronto residents and radio waves don't adhere to municipal boundaries very well.

The City of Toronto, TABIA and individual BIA web sites were also used to inform the public of the dates, times and locations of various exchanges and events. In addition, the services of Accurate Impressions were retained to print and deliver door to door 1,000 event flyers to households in the immediate vicinity of each event in a concentric circle. Those BIA's that had launch events scheduled also included the exchange as part of their marketing and advertising materials.

TABIA, TH and the city of Toronto used press releases extensively resulting in a number of media visits to launches and exchanges thus providing TH with extensive exposure regarding the Exchange program on local television broadcasts, radio and print. It should be noted that the expansion of the exchanges into ethnic neighbourhoods resulted in an increase of ethnic media coverage. This included CHIN radio and TV as well as the Greek Programming Network.

Communications are elemental in the success of these types of events; based on the media coverage and the number of people that attended despite the inclement weather we believe that this element of the project was well targeted and implemented.

Conclusion:

It is our submission that the events, venues, program and the project as a whole were well executed by TABIA, despite the weather challenges which are to be expected at that time of year and a number of obstacles that were encountered. The volunteers performed admirably and TEV should be commended for their continued participation. Internal TH staff assigned to implement this initiative were not only involved in the planning stages, but also became on site volunteers, ambassadors and media contacts and thus should be commended for their commitment to the exchange and conservation program. As in past years a number of additional TH volunteers came out and performed a number of duties as required whether it was cutting ends or stacking boxes, their help was greatly appreciated. I would be remiss if I didn't specifically acknowledge the TH drivers that volunteered and were subsequently assigned to this project who did a great job among some difficult time constraints and traffic situations.

The newly participating BIAs were ever so pleased for being involved in an initiative that brings people back to mainstreet rather than driving them to power centers and shopping malls. From the public relations side, having attended all locations at some point, the consumer public response was very positive even when we didn't give them a free set of lights because they didn't have the necessary old lights for exchange as they may have come to the event by chance. The general consensus was that "This Is the Right Thing to Do".

Most importantly TABIA is very pleased that through their efforts and the assistance of TH this relatively small initiative resulted in the removal of 1.8 substantiated Mega Watts off the grid, generated by taking in 17,903 sets of incandescent seasonal lights of a variety of sizes (as per Excel File) and giving in exchange 8,483 sets of SLEDs.

Should you require any additional information pertaining to the 2007 Cavalcade of Lights Neighbourhood SLED exchange program please feel free to contact the undersigned at any time,

Hope the above meets your requirements.

Respectfully submitted on January 23rd, 2008.

John J. Kiru
Executive Director,
Toronto Association of BIAs
2257 Bloor Street West
Toronto, ON M6S 1N8

(416) 889-4111
jkiru@toronto-bia.com

ATTACHMENT A

2007 Performance by Venue

2007 Light Exchange Performance

(Number of sets exchanged per venue)

Chinatown	November 8 th .	Rain	128	
Gerrard India Bazaar	November 9 th .	Very Cold and Dry	147	
Little Italy	November 14 th .	Warm and Dry	364	
Bloor West Village	November 15 th .	Damp and Cool	473	
Kingsway	November 16 th .	Cold and Dry	518	
St. Clair Gardens	November 16 th .	Cold and Dry	253	
Albion-Islington Corners	November 17 th .	Inside	438	
Bloor Yorkville	November 17 th .	Cold and Dry	98	
Downsview Park	November 17 th .	Inside	683	
Greektown	November 17 th .	Cold and Dry	409	
Junction	November 17 th .	Cold and Dry	387	
Korea Town	November 17 th .	Cold and Dry	247	
Rosedale Summerhill	November 17 th .	Cold and Dry	302	
St. Lawrence Market	November 17 th .	Inside	189	
Wexford Heights	November 17 th .	Cold and Dry	798	
Queensquay - Harbourfront	November 18 th .	Bitter Cold	227	
Roncesvalles - Councillor Perks	November 24 th .	Cold	393	
Emery - Councillor Mammoliti	November 25 th .	Inside	487	
Riverside District	November 29 th .	Inside	298	
Beach	December 1 st .	Bitter Cold	532	
Mimico By the Lake	December 2 nd .	Cold and Wet	168	
			7,539	
Member Caplan	December 1 st .		600	455
Minister Phillips	December 9 th .		500	489
Donna Cansfield	TBD		500	
			8,483	