

STAKEHOLDER AND COMMUNITY CONSULTATION

1.0 INTRODUCTION

Hydro One has completed the initial stage of its consultation process for the project. This schedule describes the consultation approach, identifies key stakeholders and summarizes input received and results to date. This section will also outline the consultation approach which will be carried out as part of the EA and Section 92 processes. A separate exhibit, Exhibit B, Tab 6, Schedule 7, addresses the Aboriginal engagement process.

During this initial consultation stage, Hydro One has focused on briefing upper- and lower-tier municipalities affected by the project. Hydro One intends to continue consultation with a broader range of audiences with the primary objective of dealing directly with affected property owners. Hydro One will also provide timely and regular project updates and opportunities for feedback for the public and key stakeholders including municipal and county/regional officials.

2.0 CONSULTATION APPROACH

The result of the consultation provides valuable input to the EA and OEB review processes.

There are two key phases for the project: 1) the section 92 proceeding and EA Terms of Reference, which are expected to occur in parallel; and 2) the EA. Hydro One will be identifying and consulting with affected property owners and stakeholders who may have an interest in the proposed facilities during both these phases and the Section 92 application will be updated as required, based on the results of this consultation.

3.0 OBJECTIVES OF THE CONSULTATION PROCESS

The intent of the process is to inform affected property owners, stakeholders and the general public about the project, identify any issues, and develop project plans that address those issues, where appropriate. Based on consultations to date, a summary of the issues raised and how Hydro One intends to address them is included in this Schedule. This document will be updated with input obtained through Hydro One's ongoing consultation process.

3.1 Meetings with Municipal Staff

Prior to initiating the formal EA and filing the Section 92 Application, Hydro One met with senior administrative staff for all upper- and lower-tier municipalities potentially affected by the project. These meetings were held in December 2006 and January 2007. A summary of the issues raised at these meetings and how Hydro One intends to address them is included in Section 4 of this Schedule.

At these meetings, Hydro One and the OPA provided information on the project, including the need for the transmission reinforcement to support energy development in the Bruce area and the role of the OPA in determining the solution for delivering committed and potential generation from the Bruce area to meet the province's supply needs. The requirement for a Section 92 approval, EA approval and project timelines were also discussed. Hydro One also obtained contact information for local interest groups that would be included in the consultation process, as well as an understanding of local issues and potential concerns associated with the proposed transmission line.

Following is a list of meetings with senior municipal administrative and planning staff held in December 2006 and January 2007:

❖ County of Bruce

- Municipality of Kincardine
- Municipality of Brockton

❖ County of Grey

- Town of Hanover
- Municipality of West Grey
- Township of Southgate

❖ Wellington County

- Township of Wellington North
- Town of Erin

❖ Dufferin County

- Township of East Luther Grand Valley
- Township of East Garafraxa

❖ Regional Municipality of Halton

- Town of Halton Hills
- Town of Milton

A summary of the issues identified at the above meetings can be found in Section 4 of this Schedule.

A Municipal Advisory Group is proposed as a forum for discussion of issues during key milestones of the project. Relevant issues will be incorporated into the project plans and this application will be updated as required. Municipal staff will also have access to all other consultation opportunities including public information centres, inter-active web-based information and one-on-one meetings as requested.

3.2 Meeting with Elected Officials

As part of the consultation process, Hydro One will provide information and formal written notification to mayors/reeves/wardens and MPPs whose municipalities and ridings are affected. These activities have been initiated and are planned to continue throughout the project as required. Issues raised and how Hydro One intends to address them will be tracked and reported at a future date.

Throughout the consultation process, Hydro One will ensure that elected officials at all levels are kept informed of project activities. They will be provided communications material and documents (e.g., ads and newsletters). Elected officials will also have access to other consultation opportunities, including public information centres, interactive web-based information and one-on-one meetings as requested.

3.3 Meetings with Other Stakeholders

There are a number of agencies and interest groups who are expected to be interested and wish to be involved in this project. Hydro One is developing a stakeholder list to identify whom to contact and to determine the most appropriate way to involve them in the project. Participation by the following stakeholders is anticipated:

- Environment Canada
- Canadian Environmental Assessment Agency
- Fisheries and Oceans Canada
- Ministry of Agriculture, Food and Rural Affairs
- Ministry of Culture
- Ministry of Energy
- Ministry of Environment
- Ministry of Municipal Affairs and Housing

- 1 • Ministry of Transportation
- 2 • Ministry of Tourism
- 3 • Niagara Escarpment Commission
- 4 • Ontario Realty Corporation
- 5 • Oak Ridges Moraine and Greenbelt interest groups
- 6 • School Boards and Health Units
- 7 • Conservation Authorities
- 8 • Energy interest groups
- 9 • Environmental interest groups
- 10 • Local ratepayer groups
- 11 • Farm- related interest groups
- 12 • Others as identified during the project

13 Throughout the consultation process, all stakeholders will be kept informed of the project
14 through the receipt of communication material (e.g., newspaper ads, flyers, newsletters
15 and web site) and opportunities to obtain and review documents.

16
17 Since December 2006, Hydro One has had discussions with key provincial and federal
18 government agencies to provide an overview of the project. The discussion of key issues
19 and approval requirements will be ongoing with agencies and interest groups throughout
20 the planning period. A Government Review Team normally composed of provincial
21 ministry and agency representatives will examine the EA documentation at key
22 milestones during the approvals process.

23
24 Meetings will be held with interest groups on an as-needed basis. To the extent
25 appropriate, electronic discussion tools such as web seminars will be used.

4.0 SUMMARY OF KEY ISSUES AND HYDRO ONE RESPONSE:

December 2006 – March 2007

Issue	Description of Issue	Response/Mitigation
4.1 Economic Development	Development at Bruce Power Complex is supported by many communities, particularly in Bruce County.	Transmission line is perceived as supporting the economic development and future prosperity in the area through further generation development.
4.2 Wind Power Developments	Both support and opposition for wind projects in the area.	Transmission line will facilitate generation developments, including wind, to meet provincial supply needs.
4.3 EA Process	Numerous EA processes underway in Bruce County by other proponents.	Work closely with other proponents in the area to ensure differentiation of generation and transmission projects and timelines are clear to the public.
4.4 Visual Impacts	Concerns relating to the visual impact of new set of transmission towers.	<p>Hydro One will discuss tower type and placement with affected property owners. Tower placement will follow alignment of current towers to the extent possible to mitigate visual impact.</p> <p>Hydro One will discuss the proposed transmission line layout with affected property owners prior to the start of construction and will attempt to accommodate individual requests.</p> <p>Landscaping will be undertaken at selected locations along the right-of-way to enhance the appearance of the transmission corridor.</p>
4.5 Impacts on Agricultural Activities	Impact of new towers on farming operations.	Hydro One will work with affected property owners to minimize the impact of the new structures on agricultural activities.
4.6 Property Compensation	Hydro One treatment of affected property owners.	During the section 92 proceedings, Hydro One will begin

Issue	Description of Issue	Response/Mitigation
		<p>discussions with landowners. In order to meet the urgent in service timelines, Hydro One will be utilizing the expropriation process under the Ontario Energy Board Act and the Expropriations Act after receiving section 92 approval.</p> <p>Hydro One is committed to a consistent compensation treatment of affected property owners using market value principles.</p> <p>Hydro One's objective is to take the minimum amount of land from private ownership and out of agricultural production.</p>
4.7 Construction Impacts	<p>Concerns relating to potential property damage such as tile drains, underground services, and compaction of soils on agricultural properties.</p> <p>Concerns relating to the timing of construction due to crop planting/harvesting and regarding adequate notification prior to the commencement of work.</p>	<p>Hydro One will consult with affected property owners prior to the start of construction to identify potential impacts and mitigations.</p> <p>Prior notification will be given of any requirement to access the property for pre-construction work and Hydro One will inform affected owners of its construction schedule. Hydro One will make best efforts to schedule construction activities to minimize interference with farm operations.</p> <p>Hydro One will repair at its expense any damage caused to the owner's infrastructure or property, and when construction is complete will remediate any soil compaction that has occurred.</p> <p>Standard best practices will be followed to ensure typical construction</p>

Issue	Description of Issue	Response/Mitigation
		disturbances (e.g., dust and noise) are minimized.
4.8 Loss of Farm Income	Concerns relating to loss of income during the construction phase	Hydro One will compensate farmers for loss of income resulting from construction activities related to the project.
4.9 Future Development Proposal	<p>Concerns relating to impacts on major commercial/ industrial developments in Halton Region.</p> <p>The Town of Halton Hills has expressed concerns over tax revenue losses associated with two development proposals/plans immediately north of Highway 401.</p>	<p>Hydro One has met with developers and municipal staff in an effort to mitigate concerns.</p> <p>Hydro One has developed a technical solution that makes use of available land for a short section of the route on the west side of the existing transmission corridor in the vicinity of the planned developments. This solution is expected to mitigate the expressed concerns. An updated Milton area map is included in B-6-11 reflecting the change.</p>
4.10 Electric and Magnetic Fields (EMFs)	Potential health effects associated with EMFs.	<p>Information about EMFs will be available at the PICs, and is also available on Hydro One's web site at www.HydroOneNetworks.com.</p> <p>Health Canada current position on EMFs is that typical exposures present no known health risk. Further information is available on Health Canada's website: www.hc-sc.gc.ca.</p> <p>Hydro One provides on request EMF measurements at no charge to customers whose property is crossed by or abuts a Hydro One transmission corridor.</p>

1 **5.0 PUBLIC CONSULTATION UPDATE (March to September 2007)**

2
3 This section provides a summary of Hydro One's consultation activities in support of the
4 Bruce to Milton Transmission Reinforcement Project between March and September
5 2007. During this stage of the consultation program, Hydro One has placed more
6 emphasis on activities targeted at the engagement of affected property owners, while
7 continuing its communications with other interested stakeholders. This stage began on
8 March 26, 2007, when the Ontario Power Authority and Hydro One issued news releases
9 to announce the start of the Bruce to Milton Transmission Reinforcement Project. This
10 marked the official start of the public consultation phase of this project. Advance notice
11 of the project launch was provided to key public officials including: the mayors and
12 councils, chief administrative officers and clerks in the affected municipalities, counties
13 and region. Aboriginal groups were also contacted, as described in Exhibit B, Tab 6,
14 Schedule 7.

15
16 **6.0 NOTICE OF COMMENCEMENT OF BRUCE TO MILTON PROJECT**

17
18 **6.1 Notifying Affected Property Owners**

19
20 An information package containing a letter from Hydro One's project manager
21 announcing the Bruce to Milton Project and a newsletter ("*Bruce to Milton Connection*
22 March 2007, Issue #1), which provided details on the need, approvals and consultation
23 process was mailed to affected property owners the week of March 26, 2007 (see
24 Appendix A). In addition, the newsletter was distributed to all those within a minimum
25 of 500 metres of the corridor. The newsletter provided an introduction to the project and
26 included an invitation to PICs, as well as a reminder of information available on the web
27 site. A copy of the Newsletter is filed in Appendix B.

28
29 The letter provided important information for landowners to enable them to contact
30 Hydro One staff who could answer their questions about the project. Hydro One

1 established a toll-free Project Hotline (1-877-345-6799 or locally 416-345-6799), and the
2 Hotline was staffed by Hydro One Corporate Communications during regular business
3 hours, with an option to leave messages on a 24/7 basis. The Hotline has provided a very
4 effective means of opening the communication channels with landowners and other
5 interested stakeholders. The calls were logged and responses provided. This information
6 will inform both the OEB and EA processes.

7
8 Approximately, 150 calls were received on the Hotline between March 26 and August 30.
9 The great majority of calls (75%) have been from affected property owners, and the
10 majority of questions and discussions have focused on land matters, e.g., compensation,
11 property value impacts, potential impacts on family or business activities, as well as
12 questions about the OEB and EA processes. The call volume on the Project Hotline has
13 declined substantially as property agents have been hired by Hydro One to deal directly
14 with owner issues and land negotiations. The property agents began telephone calls and
15 one-on-one meetings with the property owners in July and are their main point of contact.
16 All affected property owners were contacted over this past summer with the exception of
17 those represented by legal counsel who have directed Hydro One not to contact their
18 clients.

19
20 A Bruce to Milton project website was also launched at:
21 www.HydroOneNetworks/BrucetoMilton. The project-specific web page has been
22 designed as an interactive portal for obtaining information and providing input. This web
23 page provides an overview of the project, access to downloadable information, responses
24 to frequently asked questions and an opportunity to provide comment. This address was
25 promoted in all communications materials. The project website is updated on a regular
26 basis and tracks both the progress of the OEB and EA processes. Interested stakeholders
27 can register for our project mailing list online or by calling our Hotline. To date, over 40
28 individuals and organizations have registered to receive project information.

6.2 Notification of Elected Officials and Staff

The mayors, reeves, and wardens, and Members of Provincial Parliament (MPPs) of the affected communities received information packages, a large study area map and the project newsletter on March 27. Hydro One and OPA staff also met with MPPs, at their request, on April 17 and May 16, to provide a project overview and answer questions. These meetings included MPPs or their representatives from the following ridings:

- Bruce – Grey – Owen Sound
- Waterloo – Wellington
- Halton
- Burlington

The key issue raised at these meetings was impact on property owners (e.g., compensation, property acquisition, timing, and rights under expropriation). Hydro One will continue to keep elected officials updated on these matters.

6.2.1 Council Presentations and Meetings

Hydro One and OPA staff were also invited to a number of council meetings to provide an overview of the project. These included the Township of East Garafraxa on April 10, the Municipality of West Grey on April 16, and the Township of East Luther Grand Valley on June 12. Hydro One staff also met with the Mayor and a Councillor from the Municipality of Brockton on June 12. Land matters and the impact of the project on property owners were the primary focus of these meetings.

At the East Garafraxa council meeting, there were approximately 20 local residents and business owners present. The Mayor allowed questions from the audience and the focus was on:

- Property value impacts and compensation issues;
- Impact on Orton Park;
- Electric and magnetic fields (EMFs);
- Impact on agricultural activities; and,
- Potential for a third transmission line.

Following the council meeting, Hydro One and OPA staff continued discussions with a smaller group of landowners and committed to post responses to their questions on the project website under the FAQ section.

6.3 Key Stakeholder and Interest Group Meetings

Hydro One and its consultants have convened numerous meetings and worked cooperatively with the organizations listed below to collect data and identify and address issues and concerns. Through these discussions, Hydro One has gained a better understanding of stakeholder issues and will work to make refinements to its planning processes and studies. Such meetings will continue with these groups and others which identify an interest as the project moves through each stage of the OEB and EA processes.

- Ontario Federation of Agriculture (OFA)
- Landowner groups, (e.g., Powerline Connections)
- Saugeen Valley Conservation Authority
- Credit Valley Conservation Authority
- Halton Region Conservation Authority
- Grand River Conservation Authority
- Orton Community Association

6.4 OEB Notice of Applications

A second information package was sent to affected property owners, key stakeholders and municipal officials on behalf of the OEB, serving notice that Hydro One had submitted an application to the OEB for Leave to Construct the Bruce to Milton transmission line. This package also contained a Notice of Commencement of the EA Terms of Reference which provided notice of public information centres from April 30 to May 9. The package was mailed the week of April 18th. Affected property owners also received notice of the Section 98 application (Access to Land, EB-2007-0051).

The goal of placing both the OEB notices and Hydro One's Notice of EA Commencement in the same package was to encourage affected property owners and interested stakeholders to attend a public information centre to learn more about the approvals processes and talk directly to Hydro One staff about both OEB and EA processes.

7.0 PUBLIC INFORMATION CENTRES

Public information centres (PICs) were held in seven communities along the route: Kincardine, Hanover, Holstein, Grand Valley, Marsville, Erin and Acton. The number and location of the PICs was tailored to ensure access for all interested parties. The PICs provided interested stakeholders with the opportunity to review project information and plans, provide input to Hydro One's planning process, and discuss their concerns with Hydro One's project team and OPA staff.

Visitors to the PICs were provided with a comment form to complete. All comments received were documented and responded to, and became part of the EA documentation, and this updated schedule.

A Notice of Commencement of the Environmental Assessment, which provided background on the project and listed the location and dates for the PICs was published as a full-page advertisement in local community newspapers along the route (Table 7.1). Members of the public, landowners, government agencies, Aboriginal groups, and interest groups were invited to attend the PICs. A copy of the newspaper ad is included in Appendix B.

During the week of April 16, 2007, government agencies, Aboriginal groups, and interest groups were provided with a copy of the newsletter and a cover letter. Also during the week of April 16, almost 20,000 copies of the project newsletter were distributed via Unaddressed Admail to all properties that fall within 500 metres of the existing and reference corridor.

Table 7.1 Notice of Commencement and PIC Newspaper Ads

Media	Dates
Owen Sound Sun Times	April 19 and April 24, 2007
Kincardine Independent	April 18, 2007
Kincardine News	April 18 and 25, 2007
Shoreline Beacon	April 18 and 25, 2007
Walkerton Herald-Times	April 18 and 25, 2007
Hanover Post	April 20 and 27, 2007
Dundalk Herald	April 18 and 25, 2007
Mount Forest Confederate	April 18 and 25, 2007
Orangeville Banner	April 20 and 27, 2007
Orangeville Citizen	April 19 and 26, 2007
Grand Valley Star	April 26, 2007
Wellington Advertiser	April 20 and 27, 2007
Erin Advocate	April 25 and May 2, 2007
Georgetown/Acton Independent & Free Press	April 25 and May 4, 2007
Milton Canadian Champion	April 24, 2007
Acton New Tanner	April 26, 2007

7.2 PUBLIC INFORMATION CENTRE SUMMARY

The PICs were organized in an open house format (i.e., no formal presentations) and ran from 4:00 p.m. to 8:00 p.m. One-on-one interaction was encouraged among attendees and the project team, which included representatives from Hydro One, the OPA and consultants assisting with the project. Subject matter experts on the team were available to answer questions covering a wide range of topics including property acquisition and compensation, the need and selection of the route, construction, operations, regulatory processes and environmental effects.

Display panels providing information on the project background, current conditions, need and alternatives, key issues, OEB and EA processes, and EA Terms of Reference were set up around the room with staff available to answer questions. Large aerial photos showing lot lines and the expanded corridor associated with the proposed reference route were displayed on tables and were a useful resource for landowners who wanted to discuss their particular property with Hydro One real estate staff.

Prior to each PIC, municipal officials were invited to attend a one-hour Preview. The intent was to provide municipal representatives with an overview of the project and an opportunity to discuss any issues with the project team, to enable them to participate more fully in the public portion of the PIC. Municipal representatives attended both the previews and the regularly scheduled sessions and almost all the affected communities were represented. Municipal officials raised a number of issues which Hydro One is addressing as part of the environmental assessment process. These issues are summarized below:

- Fair treatment of affected property owners
- Impact on planned commercial development
- Impact on municipal property tax assessment resulting from removal of houses or major farm buildings along the widened transmission corridor

- Alignment of the new transmission line relative to the existing lines
- Need for more details on how to participate in the OEB and EA processes
- Expropriation of properties/land rights vs. negotiation with property owners
- Impacts on Orton Park located in the Township of East Garafraxa
- Woodlot impacts and reforestation policy

Table 7.3 summarizes attendance at each Public Information Centre as well as the number of comment forms submitted. Over 500 people attended the PICs; and while the majority were affected property owners, other participants included OFA representatives, elected municipal officials and staff, Orton Community Association members, a Métis group representative, wind energy representatives, real estate agents, legal counsel for affected landowners, media and the general public.

Table 7.3 PIC Attendance

Date	PIC Location	Attendance	Comment Forms Submitted
April 30, 2007	Kincardine	26	4
May 1, 2007	Hanover	151	29
May 2, 2007	Holstein	75	22
May 3, 2007	Marsville	134	23 (incl. 4 letters)
May 7, 2007	Grand Valley	51	7
May 8, 2007	Erin	42	4
May 9, 2007	Acton	45	6
Total		524	95

At the end of the seven PICs, Hydro One had made contact and begun the dialogue with over 50% of all affected property owners and specifically, approximately 84% of the potential buyouts (i.e., those properties that must be purchased in their entirety because the residence or major farm/business building is located on the widened corridor) who will be most affected by the project. The PICs provided an excellent opportunity for staff to learn about specific property owner concerns regarding issues such as compensation, unique environmental features and impacts, and business and lifestyle impacts.

Many affected landowners also had questions about the OEB notices, and Hydro One staff helped to clarify this process for the attendees. At the Marsville PIC, the focus was the impact of the new transmission line on a local park which was built and is maintained by local volunteers. Approximately 90 people representing the Orton Community Association attended to convey their concern about the impact of the proposed transmission line on Orton Park. After initial discussions between the president of the Orton Community Association and senior Hydro One staff, an agreement was struck to form a joint committee to discuss options to address community concerns regarding the future of the park. Meetings of this joint committee occurred on May 28, July 16, and September 19. Future meetings are planned.

7.5 Public Feedback

Comment forms were provided to all PIC attendees. A summary of the feedback to two questions on staff performance and the adequacy of displays is presented in Table 7.5.1. Generally, those completing comment forms were satisfied with the quality of information: 97% of respondents found the information displays helpful, and 85% indicated that Hydro One staff were able to adequately answer their questions. All written questions received at the PIC have been documented and responses provided to participants. A Public Information Centre Summary Report is also posted on the project website.

Table 7.5.1 Feedback on Staff and Displays

Question Posed	Public Response		
	Yes	No	% Yes
Were the information displays helpful in explaining the project?	76	2	97%
Were Hydro One staff able to adequately answer your questions?	64	11	85%

A PIC Summary Table of questions received at the PIC and responses can be found in Appendix A. Main areas of interest include:

- Property value impacts, disruption and compensation
- Impacts on the natural environment
- Impact on agricultural operations
- OEB process
- EA process
- EMFs

8.0 COMMUNICATIONS

8.1 *Bruce To Milton Connection Newsletter#2*

In an effort to keep potentially affected property owners updated about the planning and approvals processes, a second newsletter (*Bruce to Milton Connection July 2007, Issue #2*) was mailed in early July. The newsletter provided an overview of the spring 2007 PICs, OEB process highlights, the role of property agents, contact information, and next steps in the EA process. Property owners were also informed that property agents representing Hydro One would be contacting them starting in the summer of 2007 to set up one-on-one meetings. Although this newsletter was developed for the property owner audience, information presented was of interest to a wider audience and, therefore, it was also distributed to stakeholders on the project mailing list. The newsletter was also posted on the project website (see Appendix B for a copy).

8.2 *“Keeping You Informed” Newspaper Ads*

With the aim to ensure the broader community affected by the Bruce to Milton Project was informed about the current status of the project, newspaper ads were published in 17 community and regional papers (See Newspapers in Table 6.1) between July 25 – August 1, 2007. These ads provided both an update about the OEB Leave to Construct and Access to Land proceedings and timelines, the EA process, and Hydro One telephone and

1 contact information. The ad also encouraged stakeholders to visit the project website to
2 see the most current project information. A copy of the ad can be found in Appendix B.

3 **10.0 ACCESS TO LAND NOTIFICATION**

4
5 Hydro One notified affected landowners of the August 20, 2007 OEB decision granting
6 access to land in a letter the week of August 27, 2007. The letter outlined the activities
7 for which access was approved and conditions of access (e.g., advance notification and
8 complaint procedures).

9 10 **11.0 NEXT STEPS**

11
12 Feedback received at the PICs and other stakeholder sessions was considered by Hydro
13 One staff and the project team and will inform the OEB and EA processes. In addition
14 to the planned second and third round of PICs (as part of the EA process), the public and
15 other interested stakeholders will continue to be engaged at many points in the process.
16 Ongoing activities, such as publication and distribution of project newsletters, a project
17 web site, a project hotline and newspaper ads provide updated information and continued
18 opportunities for comment and inquiry. Other consultation activities are also planned to
19 facilitate information sharing, including the following:

- 20
- 21 • Notices in newspapers announcing the submission of EA documents;
 - 22 • Ministry of the Environment (MOE) coordinated review of the EA document;
 - 23 • Individual property owner meetings to discuss specific issues;
 - 24 • Issues workshops as required; and
 - 25 • Meetings with agencies, interest groups and municipal representative meetings.
- 26

APPENDIX A

PIC Question and Response Summary Table

Note: Hydro One's consultation process, including information gathered from the PICs, supports both OEB and EA requirements. The information set out below will be addressed in the appropriate forum.

Landowner Issues	
What are the impacts on property values and resale values?	Our experience has shown that while there is often a decline in property values immediately preceding and during construction, the decline is usually short-lived, and property values return to their pre-construction value. This is true for both directly affected and adjacent properties.
How will my property's value be assessed?	Independent, accredited appraisers hired by Hydro One will consider the present zoning, Official Plans and the highest and best use of the property when undertaking property valuations.
What criteria does Hydro One use when hiring property agents?	Property agents are hired based on their professional experience in public sector land acquisition negotiations, agricultural properties, interpersonal skills and respectful dealings with property owners and overall real estate knowledge.
Will adjacent property owners be compensated for any potential impacts to their property value?	Hydro One will pay compensation only where properties are directly affected by the widened corridor, using current market value and injurious affection to calculate value. Hydro One, like all public agencies, does not compensate non-affected property owners.
Should I make any improvements to my home given that I may be bought out?	Hydro One has not received approval to build the new line. We require approvals under the Environmental Assessment Act and under the Ontario Energy Board Act, and hope to receive these approvals no later than January 2009. In the meantime, we advise you to continue to make decisions about your home as usual.
Will I have an	Hydro One will contact every affected property owner in the

Landowner Issues	
opportunity to discuss property options and when?	summer of 2007 to discuss the project and land issues. Owners in potential buyout situations were contacted prior to the first round of PICs.
The new line will negatively impact my view and recreational opportunities on my land. Will I be compensated for these reductions in my quality of life?	Directly affected property owners will be compensated for the widened corridor required by Hydro One based on the market value of the land and injurious affection. Mitigation measures, for example, landscaping, may be implemented within the foreground of an adjacent property and at significant road and river crossings to help screen the visual impact of the transmission line.
Why are some properties being bought out while others only require an easement and can I choose to be bought out instead of having an easement?	Hydro One has identified approximately 30 properties that it may need to purchase outright. This is because homes and/or major farm buildings are located within the widened corridor, posing a safety and security risk to the transmission system. Hydro One will be negotiating the purchase of easements (or in some cases, the purchase of land) for the widened corridor on all other properties where the widened corridor crosses a property that is not with residences or major farm buildings.
How will my property taxes be affected by a new line and/or tower?	Property taxes on the widened corridor will continue to be paid by the property owner. Questions regarding changes to property assessment and taxation should be directed to MPAC (Municipal Property Assessment Corporation).
I currently receive a tax break because of the presence of an ANSI on my property. Should the new corridor result in the area not being considered an ANSI, will I be compensated?	The Conservation Land Tax Incentive Program (CLTIP) is a taxation compensation program granted by the Ministry of Natural Resources (MNR) and administered through MPAC. After the transmission line construction and restoration is complete, Hydro One will consult with MNR on any taxation implications on a case by case basis.
How will I be compensated for the loss of my woodlot?	Landowners can choose to be compensated for the standing timber value, in which case Hydro One retains ownership of the wood, and "wood salvage" is included as part of the cutting

Landowner Issues	
Will you accept my personal assessment of my woodlot and can I use my own woodcutting equipment?	<p>contract. However, you can still negotiate your own deal with the cutting contractor to purchase firewood for your own use. Alternatively, you can elect to retain ownership of wood (i.e., tree length size) and our contractor will pile the wood on your property just off the right-of-way.</p> <p>Landowners cannot cut their own woodlot, because of safety concerns (operating transmission lines nearby) and existing collective agreements with our unions.</p> <p>Hydro One plans to hire an independent forestry consultant to assess the value of woodlots. Landowners can choose to hire their own appraiser or conduct their own appraisal which Hydro One would consider as part of its landowner negotiations. However, Hydro One will not pay for personal forestry assessments or consultants. Therefore, landowners may want to wait for Hydro One to provide its appraisal prior to engaging their own consultant.</p>
Will I be compensated for lost sportsmanship opportunities?	Compensation is based on market value of the land affected by the widened corridor. Landowners can continue to use their property after the line is constructed.
Natural Environment	
What is Hydro One's reforestation policy?	<p>It is Hydro One's policy to replace forested land on an area-for-area basis, preferably on the landowner's property.</p> <p>Reforestation decisions are typically made in consultation with property owners and conservation authorities. Forestry crews selectively cut trees from the corridor. Unfortunately, this means that all tall-growing trees must be removed but shrubs and low-growing trees will be retained where possible. The corridor will be stabilized with a cover crop following cutting. Hydro One reforests with native species only. Species will be selected based on owner preference, characteristics of the planting site and availability. One- to two-year-old seedlings will be planted.</p>
How will sensitive environmental features be protected?	Environmentally sensitive areas, including areas containing rare and sensitive species, are identified early in the planning process and are avoided if possible. Hydro One works with

Landowner Issues	
	agencies such as the Ministry of Natural Resources and local Conservation Authorities to develop plans to mitigate any residual impacts. Typical measures include: careful mapping and avoidance of sensitive features, appropriate timing of construction activities, selective removal of vegetation, and effective erosion and sediment control plans.
What measures will be taken to protect the environment during and after construction?	<p>An Environmental Specification will be prepared especially for this project. The Environmental Specification details how environmental protection will be achieved on the project by describing government legislation, commitments, company policy and special mitigation procedures to be undertaken. Hydro One staff and contractors on this project are responsible for implementing and adhering to all components of the Environmental Specification. Project environmental specialists will document and report on compliance with the Environmental Specification.</p> <p>Specific environmental protection measures include avoidance and/or timing of activities to avoid sensitive features, selective cutting of trees, construction of graveled access routes, and erosion and sediment control plans. Areas affected by construction are restored as close as possible to their pre-construction state. Following construction, sensitive areas will be monitored to ensure that restoration is successful.</p>
In the past, Hydro One forestry crews have left sites and access roads in disrepair and have been rude to landowners. Has Hydro One taken steps to prevent this from happening again?	<p>Hydro One is committed to fair, honest and respectful treatment of landowners and the communities we serve. Hydro One forestry crews undertake their work with the utmost professionalism, and our restoration of construction sites is second to none.</p> <p>Hydro One is committed to restoring sites and access roads to their pre-construction condition.</p>
Why weren't all possible environmental impacts considered	After careful consideration of corridor alternatives, the OPA has recommended that an expansion to the existing Bruce to Milton corridor is the only means of providing the necessary

Landowner Issues	
before deciding on the reference route?	<p>capacity within the time available. The development of a new corridor would be expected to have much greater impacts and would be inconsistent with long-standing direction to make best use of existing rights-of-way before seeking approval for new rights-of-way. This is consistent with the provincial land use policy (Provincial Policy Statement (PPS) 2005). The north and east sides of the corridor were selected as the reference route for largely technical and economic reasons. The line must exit the Bruce Power Facility on the north side to avoid crossing over the Bruce to Longwood 500 kV line. Crossovers are technically challenging to build, create system security issues and are costly.</p> <p>A preliminary review of environmental factors indicated that there were no significant differences between the north and south, or east and west sides; however, this decision will be examined in the EA process.</p> <p>A high-level environmental evaluation (i.e., without benefit of consultation, field surveys, etc.) showed no significant differences between north-south and east-west alignments. We recognize that the EA process may bring to light new information that could cause us to consider mitigation measures such as minor route refinements in specific areas along the Bruce to Milton corridor. Based on current information and analysis, these measures may not and in fact appear unlikely to result in a complete switch from north to south or east to west.</p>
Agriculture	
When deciding on the location of towers and access roads, will Hydro One take tile drains, farm equipment maneuverability, and field work efficiency into consideration?	<p>Yes. Hydro One staff will meet with landowners to get input into tower and access road layout decisions. Where possible, Hydro One will align new towers with existing ones to minimize effects on farming operations.</p> <p>Tile drains are avoided where possible. Gravel roads usually offer sufficient protection, but main drains can be protected with extra gravel or steel plates. If drains are damaged, they will be promptly repaired.</p>

Landowner Issues	
How will I be compensated for the loss of agricultural land?	Hydro One pays current market value and a one time tower allowance for each tower on your property.
Will my crops be affected by the transmission lines above?	No. Farmers can continue to farm along the expanded right-of-way. During construction farmers will be compensated for any losses caused by crop damage.
Are steps being taken to reduce the amount of productive agricultural land lost due to the new line?	Yes. Hydro One will strive to minimize the number of properties it must purchase and will offer to sell or lease any surplus lands back to the agriculture market place after construction of the line. Farmers can continue to farm land on the widened corridor with the exception of land under and around the tower base.
Will Hydro One notify me before they access my land so that I can move my cattle?	Yes. Prior to entry, Hydro One will provide notice to landowners by telephone or in writing, except where not reasonably possible.
After the right-of-way is cleared and construction is complete, will Hydro One restore the land to a condition suitable for cropping?	Hydro One will remove stumps (grub) from cutover woodlots provided the area meets the following conditions: 1) area is suitable for proposed agricultural use, i.e., wetlands and fencerows do not qualify; 2) area extends an existing agricultural field; and 3) the owner provides a suitable stump disposal area nearby and off the right-of-way.
Health and Safety	
Do Electric and Magnetic Fields (EMFs) affect people	EMFs are invisible fields found everywhere electricity is used, from electric power facilities to toasters and computers. The strength of these fields is strongest right next to the source but

Landowner Issues	
and/or livestock?	<p>diminishes rapidly as one gets further away.</p> <p>Hydro One relies on the expertise of the scientific community, including Health Canada and international agencies, such as the World Health Organization, for guidance in this area. For more than 30 years, research studies have examined the possibility of health effects resulting from exposure to such fields. At present, there are no Canadian government guidelines for exposure to EMFs. Health Canada does not consider guidelines necessary because the scientific evidence is not strong enough to conclude that typical exposures cause health problems.</p>
Tingle voltage	<p>Stray or tingle voltage often exists between the earth and electrically grounded farm equipment. When an animal touches two pieces of equipment that are at different voltage levels, a small electric current passes through its body. This current is known as "tingle" or "stray" voltage.</p> <p>Tingle voltage may be caused by the grounded distribution system of an electric utility or by on-the-farm sources. Tingle voltage is an industry-wide issue and is not specific to only Hydro One. Hydro One acts on complaints from farmers and conducts investigations to determine if problems are being caused by utility equipment or farmer-owned equipment. Farmers who believe stray voltage is a problem on their farm should call the Hydro One Call Centre at 1-888-664-9376.</p>
By placing all the lines next to each other, isn't the security of the system at a higher risk of failure from natural (tornadoes, ice storms) and human (terrorism) threats?	<p>The new Bruce to Milton line would not expose the Province's transmission network to any more risks than those faced on other corridors in Ontario. It is not uncommon to find two high-voltage tower lines running parallel on the same corridor.</p> <p>From a system security perspective, a wider separation between transmission lines is preferred; however, this must be balanced with other consideration when planning new lines such as land use impacts, provincial land use policies, and in-service dates. For major events, such as hurricanes and tornados, the Independent Electricity System Operator (IESO)</p>

Landowner Issues	
	has the technology to track and monitor severe weather events/conditions. The IESO would also take the appropriate actions in advance to mitigate the consequences.
Have any measures been taken to ensure the towers will not fail in the event of an ice storm and are people at risk if a tower fails?	<p>It is extremely unlikely that a tower will damage a home or put anyone's personal safety at risk. Hydro One conforms to Canadian Standards Association standards.</p> <p>Tower failure is rare and tends to result only from severe weather conditions. Towers are designed to fail in a specific way. There is a design point or bend line on each tower that causes the tower to fold well above the ground, rather than topple like a tree cut from the base. Therefore, in the rare occurrence where a tower does fail, it will stay within the right-of-way, as was the case in the tower failures during the 1998 ice storm. Because the towers are designed in this manner, comparing tower height to the distance from a home to a tower does not provide a reasonable estimate as to where or how a tower might land in the unlikely event that it did fail.</p> <p>.</p>
Are transmission lines in close proximity to wind farms at risk from ice-throw or blade failure?	The placement of wind turbines must respect setback requirements from transmission lines and other structures. Hydro One is working with wind farm proponents to mitigate the risk of ice throw or blade throw from wind turbines in proximity to the proposed transmission line.
What steps are being taken to ensure that this project will not impact water quality in wells?	Prior to construction, well testing will be carried out by qualified staff to obtain baseline data. This data will be compared with post-construction test data in order to identify any effects.
EA and OEB Processes	
I am concerned that there appears to have been many decisions made without sufficient consultation with	The Ontario Power Authority (OPA) has determined that the Bruce to Milton option is the only option that meets the need and is consistent with provincial land use policy. As part of the development of the Integrated Power System Plan, the OPA consulted with stakeholders on this project. The EA for the

Landowner Issues	
landowners. Why does this appear to be the case?	<p>new transmission line will focus on the transmission route from the Bruce Power Facility to the Milton Switching Station (SS). It will consider design alternatives (e.g., tower locations and access route locations) as well as measures to avoid and minimize effects. It will also identify advantages, disadvantages and net effects of the project.</p> <p>We have selected a reference route for the EA process. We submitted a leave to construct application to the Ontario Energy Board on March 29, 2007, to help ensure that we would have all the necessary approvals and the new line built and in place as soon as possible, as requested by the OPA. Hence, it is critical for the OEB and EA processes to run in parallel. The EA consultation and input received from the public, agencies and Aboriginal groups will also be factored into the OEB and EA processes. Hydro One is committed to providing a fair, open and transparent consultation process</p>
How can I participate in the OEB and EA processes?	<p>For the EA process, we are consulting with landowners who have residences and businesses in the vicinity of the route, government agencies, municipal officials and interest groups, and Aboriginal groups. Public notices related to the project were posted in local newspapers along the route. Project newsletters were sent to nearby landowners and other stakeholders. A first round of Public Information Centres was held at several locations along the route, and a few one-on-one meetings have occurred, with the rest of them to begin this summer. Other meetings are being held with interested groups. An interactive web site has been established where up-to-date information will be posted and comments can be submitted, and a toll-free project hotline has been established to receive your input.</p> <p>Hydro One has filed a Leave to Construct application ("Section 92") and evidence with the OEB outlining the proposed project and related financial impacts as well as describing completed and planned consultation. Hydro One also filed a related Access to Land application seeking permission to begin collecting EA and other data on private land. During the notice of application period, interested parties had the opportunity to seek status in the OEB's</p>

Landowner Issues	
	processes. [Note: Early Access approval was received on August 20, 2007.]
Will there be more opportunities to participate in either process?	<p>Yes. A Terms of Reference (ToR) is being prepared for the Environmental Assessment. Notification will be provided once it is available for comment. In addition to the planned second and third round of PICs, the public and other interested stakeholders will be engaged at many points in the EA process and have an opportunity to be involved in the OEB process as intervenors or observers, or they may choose to provide written comments on Hydro One's application.</p> <p>The Ministry of the Environment provides two formal opportunities for comment on the EA, one at the ToR stage and the other at the time of submission of the EA document. Ongoing activities, such as publication and distribution of project newsletters, a project web site, and a project hotline, will provide updated information and continued opportunities for comment and inquiry.</p>
Information included in the Ontario Energy Board mailings was confusing and the timelines for responding were too tight to be given proper consideration. What is being done to help landowners deal with and respond to this information now and in the future?	<p>At the PICs, Hydro One staff provided attendees with clarifications regarding the OEB process and their options for participation.</p> <p>On May 25, the OEB sent a letter to property owners affected by the line, clarifying its role with respect to Hydro One's applications. In this letter, the OEB also indicated that the timelines for responding to the application notices were being extended.</p>
The EA process seems much shorter than the typical EA timeline. Why is this so?	For the Bruce to Milton Project, Hydro One is relying on the analysis, consultation and recommendations of the OPA, specifically the determination of need and alternatives to this project. Therefore, the OPA recommendations provide a starting point for Hydro One's EA process, which Hydro One believes will shorten the time necessary to complete the EA process.

Landowner Issues	
Why weren't other corridors considered in this EA?	After careful consideration of corridor alternatives, the OPA has recommended that the upgrading of the Bruce to Milton corridor is the only means of providing the necessary capacity within the time available, while being consistent with Provincial land use policy.
How can I get a copy of the EA Terms of Reference and other documents as they become available?	If you have received information in the past or if you attended the PICs and signed in, you will be on the project mailing list and will be notified when and where this document is available for review. If you are unsure whether you are on the project mailing list, call 1-877-345-6799 to ask to be added to the mailing list.
As a tenant, what rights do I have in these processes?	Tenants, like other interested stakeholders, can participate in the OEB and EA processes. Hydro One will ensure all important project communications appear in the local newspaper and are distributed via Canada Post admail. We will make best efforts to notify tenants when we need to access property.
Why am I only being offered \$2 for access to my land?	The reference to the exchange of \$2 in the legal agreement template is a legal formality.
Cultural Resources	
The reference route passes directly over Orton Park? Is Hydro One going to do anything to protect this community feature?	Hydro One has agreed to work with the Orton Community Association to explore options to address this matter. A Joint Committee has been formed, and will work towards an agreement to address community concerns.
There is a lime kiln on my property. Will this be protected and how will other cultural resources be protected?	Cultural features will be identified during survey activities. Protection and mitigation strategies include avoidance and relocation.

Landowner Issues	
Miscellaneous	
I am not a property owner but I am interested in the project and want to stay informed. How can I get more information and stay up-to-date?	Information is available on the project web site at www.HydroOneNetworks.com/BrucetoMilton . Also, everybody who signed into the PICs will be placed on the project mailing list and will receive project newsletters in the standard mail, and email if an email address was provided. If you are unsure whether you are on the project mailing list, call 1-877-345-6799 to ask to be added to the mailing list.
I own an Airstrip which will now be closer to the line. Will Hydro One paint towers and light towers near this feature?	Hydro One will follow Transport Canada regulations with respect to painting or installing obstruction lighting on towers. During the construction period we will endeavor to meet with any concerned airstrip operators and deal with any other issues.
Will municipalities be compensated for lost property tax revenue due to buyouts?	Hydro One will work with municipalities to address this issue.
Could the existing lines be upgraded so that the new line is not needed, or could the new line be buried?	<p>The existing lines cannot be upgraded to accommodate the more than 3000 MW of additional power from wind generation and from the Bruce Power facility that will be coming online by 2011. Taller 500 kV towers are not a viable alternative along the entire length of the route. There is not a known design for such massive structures (about twice the height of existing towers), which would pose a security risk to the transmission of electricity, since all 500 kV circuits from Bruce to Milton would be placed on a single tower line.</p> <p>Hydro One's policy is to build all high-voltage transmission lines above ground. This is standard construction practice in Ontario and throughout the world. The cost of placing transmission lines underground is prohibitive, often costing five to seven times the cost of constructing an overhead line. Increased use of underground facilities would have a negative impact on electricity rates in the Province. Hydro One will consider placing a transmission line underground only if there are technical constraints that prevent the construction of an</p>

Landowner Issues	
	<p>overhead line, or if for a particular application the cost of constructing an overhead line exceeds the cost of placing the line underground.</p> <p>There are other factors that Hydro One considers when constructing new transmission lines. While underground facilities are protected from the elements, a fault on an underground circuit can take longer to isolate and repair. In addition, the rocky terrain in many parts of Ontario is not conducive to burying facilities, and the trenching involved in burying transmission cable can be more disruptive in environmentally sensitive areas and agricultural lands than overhead towers.</p>
Some properties already have several towers. Are the cumulative effects of multiple towers and lines on residents considered during project planning?	Property owners are compensated based on fair market value. From a planning perspective, our objective is to line up the existing and future towers to minimize visual impacts.
Many landowners have health problems or other extenuating circumstances. Can negotiations with these landowners be sped up given their unique situations?	Hydro One appreciates that property buyouts can be disruptive to families and businesses and that each landowner may have unique circumstances. Therefore, Hydro One is committing to working with landowners to address unique family and business circumstances to facilitate early buyouts under special circumstances.
Will the new line be operating at capacity once it is built?	The new line is required to transmit all of the committed and expected generation to be developed in the Bruce area, as determined by the OPA. This would put the new line at very close to its capacity.
Will more research be completed to ensure that the best route has been	The reference route (north and east of the existing corridor) will be studied in more detail during the EA to ensure that the best route alignment has been selected. The north and east

Landowner Issues	
selected?	<p>sides of the corridor were selected as the reference route for largely technical and economic reasons.</p> <p>A preliminary review of environmental factors indicated that there were no significant differences between the north and south, or east and west sides; however, this decision will be examined in the EA process.</p>
Is there a possibility that another parallel line will be added to the corridor at a future date?	<p>The Ontario Power Authority (OPA) has the accountability for electricity system planning in Ontario. The OPA has not yet done the planning on the need for an additional transmission line (or the options) beyond the currently proposed Bruce to Milton line. It is premature to conclude that a third transmission line would be proposed by OPA along this corridor.</p>

APPENDIX B

1
2
3
4
5
6
7
8
9
10

- Bruce to Milton Connection, Newsletter #1, March 2007
- PIC newspaper ad, March 2007
- Bruce to Milton Connection, Newsletter #2, July 2007
- Keeping You Informed newspaper ad, July 2007

APPENDIX B

1
2
3
4

Bruce to Milton Connection, newsletter #1, March 2007.

Bruce to Milton Connection

ONTARIO'S NEW CLEAN ENERGY CORRIDOR

Hydro One's Role

Hydro One Networks is responsible for delivering electricity safely, reliably and responsibly to homes and businesses in the Province. We own and operate Ontario's 29,000 kilometre high-voltage transmission network, and our job also includes building new transmission facilities.

What is the OPA?

The Ontario Power Authority (OPA) was established by the Government of Ontario in 2004. Its role is to develop a long-term integrated power system plan (IPSP) for the Province.

INSIDE

- 2 New Transmission Capacity
- 2 Building a New Line
- 3 Approvals
- 5 Land Matters
- 5 Project Considerations
- 6 Public Information Centres

Hydro One Announces Start of Bruce to Milton Transmission Reinforcement Project

Welcome to our *Bruce to Milton* newsletter, the first in a series that will be used by Hydro One to keep you informed about our newest transmission project. The Bruce to Milton transmission line is one of several projects that Hydro One is undertaking to meet Ontario's needs for the 21st century. As our population and economy continue to grow, we need to ensure we have the power to light our homes and businesses in the future.

The Bruce to Milton Project supports the Province's climate change and clean air initiatives by providing transmission capability to reliably and safely deliver an additional 3,000 megawatts (MW) of energy from clean and renewable sources – enough power for Milton, London, Guelph, Chatham, Mississauga, Brampton, Hamilton and St. Catharines, combined.

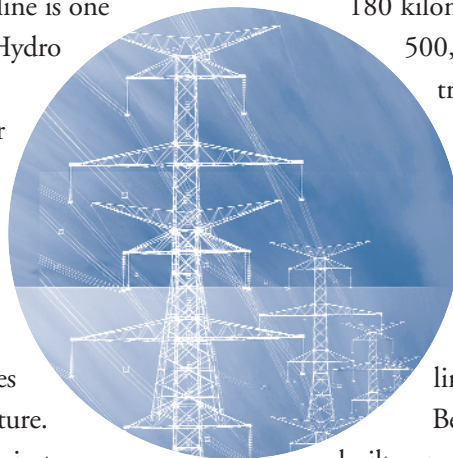
The Ontario Power Authority (OPA) has recommended Hydro One begin the approvals process required to build the new transmission line that would deliver power from clean renewable and nuclear

sources in the Bruce area to Ontario's electricity consumers. To provide the necessary transmission capability, Hydro One is proposing to build a new 180 kilometre double-circuit 500,000 volt (500 kV)

transmission line from the Bruce Power facility in Kincardine to Hydro One's Milton Switching Station in the Town of Milton. The earliest in-service date for the new line is the end of 2011.

Before this project can be built, a number of approvals are required, including Ontario Energy Board (OEB) and Environmental Assessment (EA) approvals.

This is an exciting time in the development of Ontario's transmission infrastructure. As we move forward on the clean energy corridor, Hydro One is committed to working with residents, businesses, Aboriginal groups and the communities we serve in an open, fair and transparent manner, providing consultation opportunities throughout the process to ensure we continue to deliver reliable and affordable electricity across Ontario.



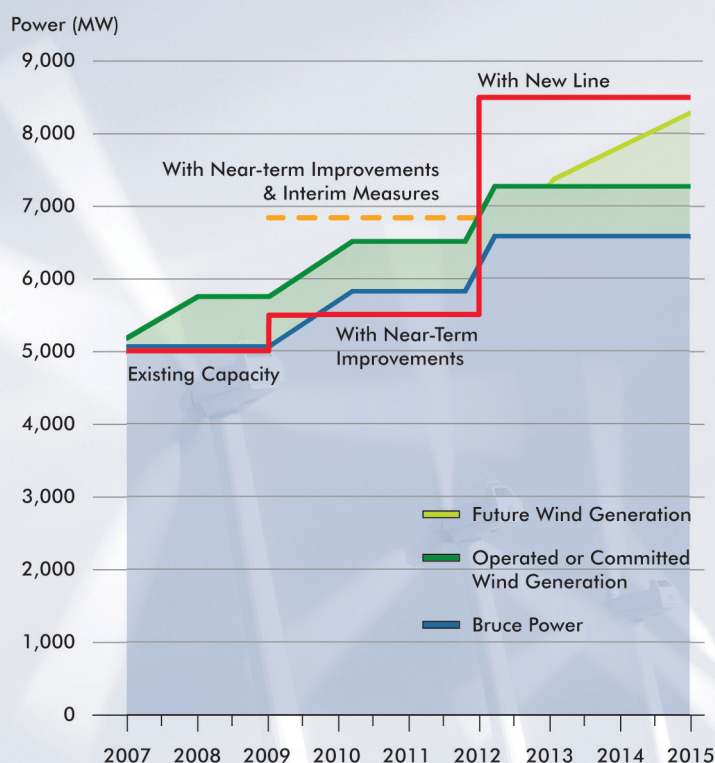
Need for New Transmission Capacity

The transmission system currently has the capability to transmit approximately 5,000 MW of generation from the Bruce area to Ontario electricity consumers, just enough to meet today's needs.

Bruce Power is returning to service two nuclear units (about 1,500 MW) by 2009. These units have been out of service since the mid 1990s. Approximately 700 MW of wind development projects have also been identified in the Bruce area to date, with another 1,000 MW of future potential.

The OPA has determined the need and timing for this new transmission line to ensure this increased generation can be reliably transmitted to Ontario electricity consumers. Following a detailed analysis and review, the OPA has concluded that a new transmission line that parallels the existing line from the Bruce Power facility to Hydro One's Milton Switching Station is required.

Bruce Area Available Generation



Source: OPA Discussion Paper

A Safe, Reliable, and Cost-efficient Option

Along with meeting the technical need to deliver the additional power, making best use of existing infrastructure was a critical factor in the OPA's determination of the Bruce to Milton route. The use of existing transmission corridors before the development of new ones is consistent with the Province's land use policy.

The need and rationale for a new transmission line is discussed in more detail in the OPA's Transmission Discussion Paper #5 and Discussion Paper #7, which can be downloaded from www.powerauthority.on.ca and will be available at public information centres in the weeks to come.

Building a New Transmission Line

The proposed transmission line will require the widening of the existing corridor from Bruce to Milton by approximately 53m - 61m (175 - 200 ft). Following an environmental and technical review and analysis of the corridor, a preferred alignment was determined along the north side of the corridor from Bruce to Colbeck Junction (Jct.) and along the east side from Colbeck Jct. to Milton (see Figure 1).

Near and Interim Measures

In addition to building the 500 kV transmission line, the OPA has also recommended near-term and interim measures to increase the carrying capacity of the existing transmission system in the Bruce area by 2009 until the new line is placed in-service in late 2011.

- Increasing the capability of a section of the existing 230 kV line between Hanover Transformer Station (TS) and Orangeville TS
- Installing voltage support facilities at existing Hydro One stations in the western GTA and southwestern Ontario

These activities do not involve EA or OEB approvals.

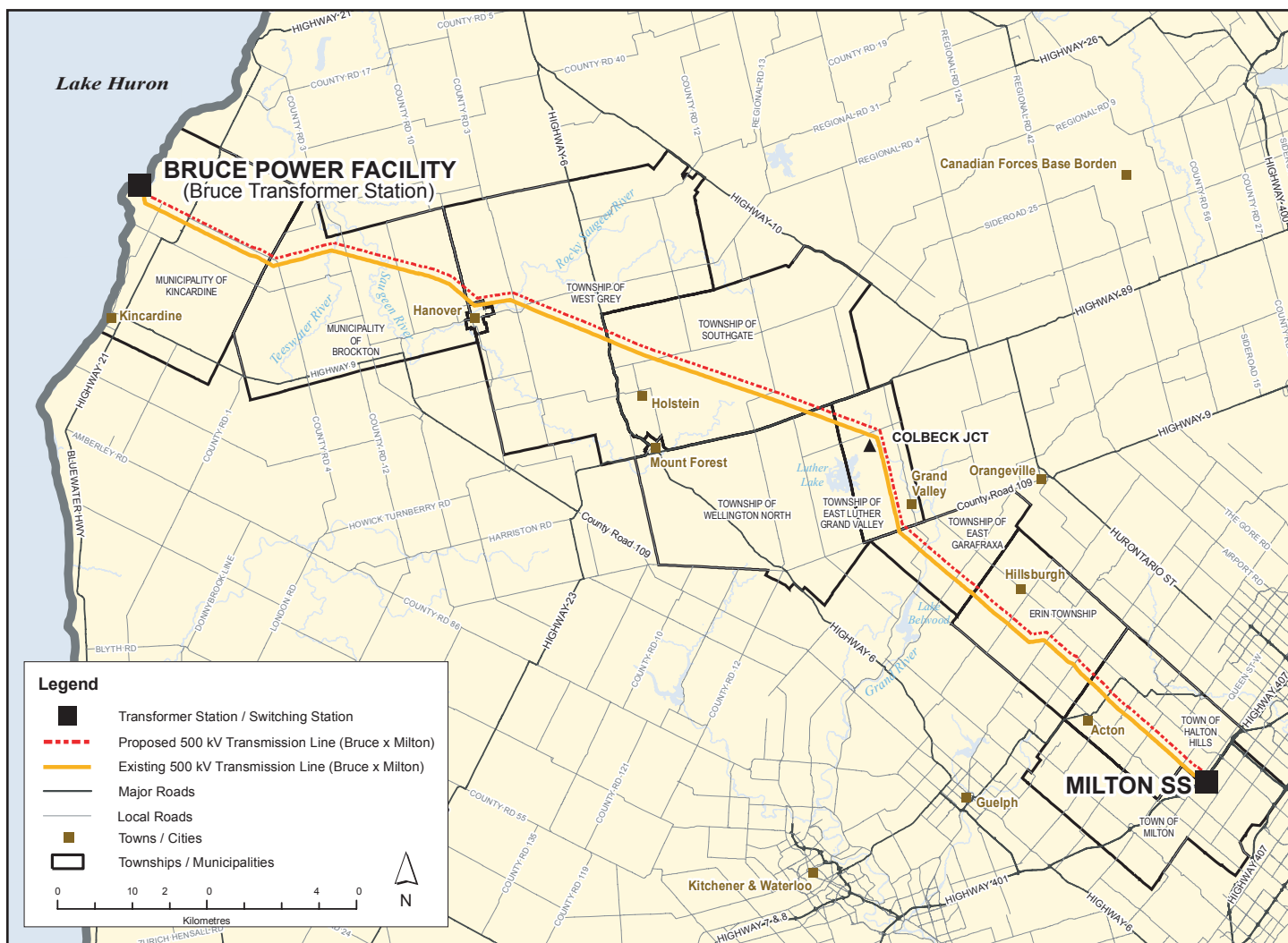


Figure 1: Bruce to Milton Transmission Route

Seeking Approvals

Prior to constructing new transmission facilities, Hydro One must seek and obtain OEB and Environmental Assessment approvals. Hydro One is proceeding concurrently through the OEB and EA processes, to ensure that electricity from future wind and nuclear sources can be delivered to Ontario electricity consumers by late 2011. Both of these approval processes include opportunities for you to participate and provide your input to the decision-making process.

Ontario Energy Board

The OEB regulates Ontario's natural gas and electricity industries. The OEB is responsible for ensuring construction

and operation of proposed transmission facilities are in the public interest. In carrying out this mandate, the OEB considers the impacts that the project may have upon consumers with respect to prices, as well as matters that concern the reliability and quality of electricity service. When the OEB receives an application, it reviews the material, makes the information public and provides an opportunity for stakeholder and Aboriginal input.

In March 2007, Hydro One filed two applications with the OEB related to the Bruce to Milton Project:

- Leave to Construct (section 92 of the *OEB Act*)
- Early access to land (section 98 (1.1) of the *OEB Act*)

Early Access to Land

Early access would allow Hydro One employees and representatives to access properties along the proposed line to undertake a limited number of activities (including field and legal surveys and soil testing) during 2007. If you are an affected property owner, Hydro One will communicate with you before entering onto your land.

Environmental Assessment Act

This project is subject to the requirements of the *Environmental Assessment Act* (EA), and an Individual Environmental Assessment will be completed.

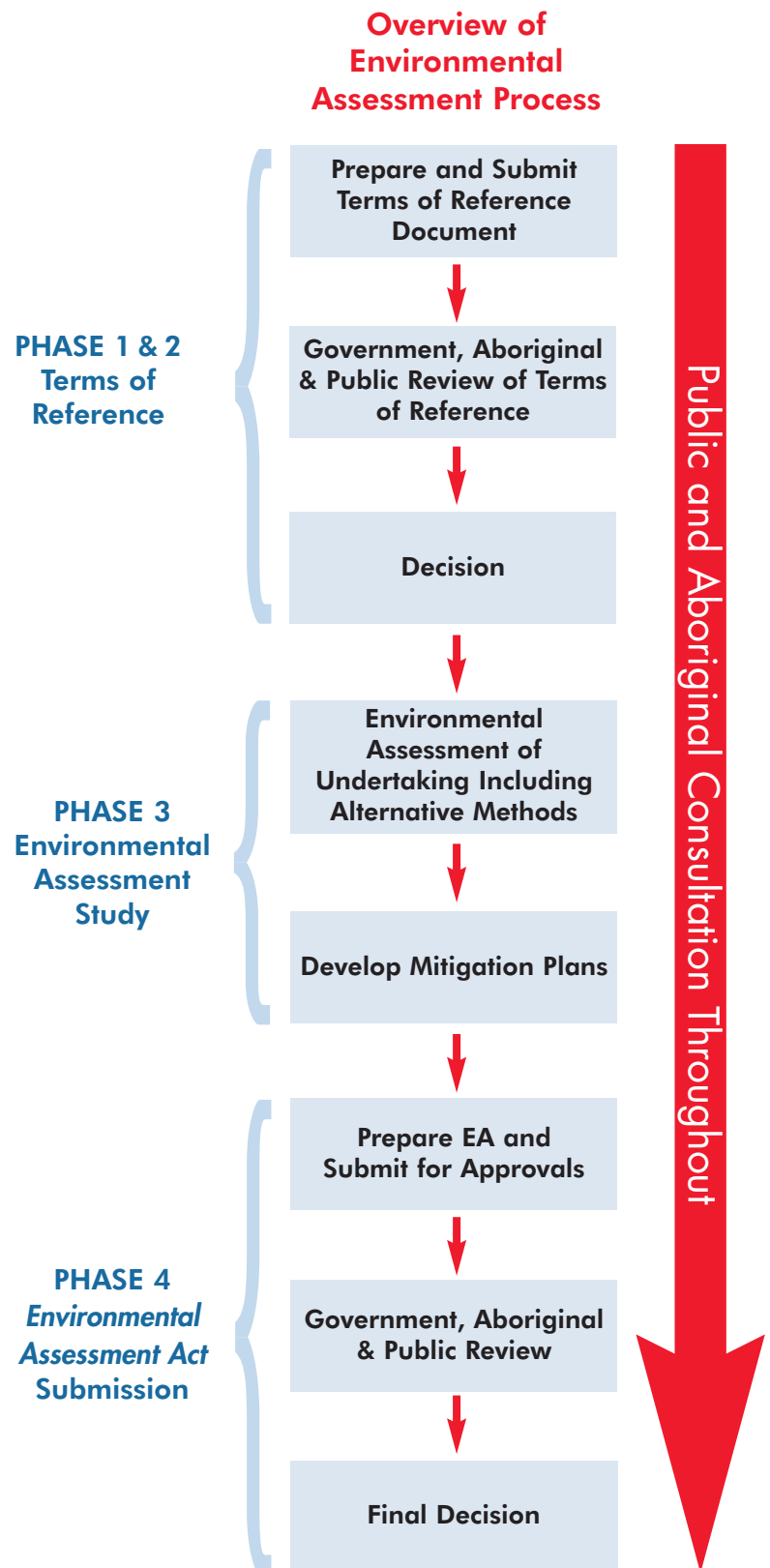
There are four key phases of the EA process:

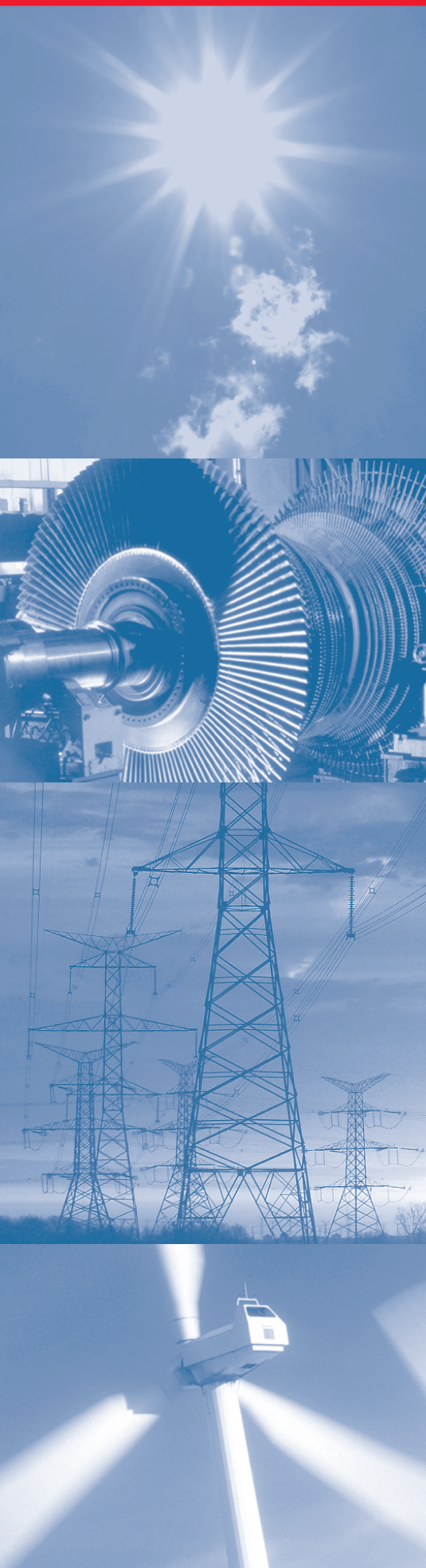
1. EA Terms of Reference Preparation
2. EA Terms of Reference Review and Approval
3. EA Study Preparation
4. EA Study Review and Approval

A Terms of Reference establishes the framework for the preparation and review of the EA. It outlines how the EA will be conducted and helps ensure that the public, Aboriginal peoples and government agencies know what will be considered. The Terms of Reference is subject to approval by the Minister of the Environment.

We are currently at the beginning of Phase 1 of the EA process: the preparation of the EA Terms of Reference. Public and Aboriginal input will be collected during the development of the Terms of Reference. The MOE will also initiate a formal public and agency comment period on the Terms of Reference once it is submitted.

This EA Study will focus on the transmission route from Bruce to Milton. It will consider design alternatives (e.g., tower types and locations on the corridor and access route locations), measures to avoid and minimize effects and identify advantages, disadvantages, and net effects of the project.





Land Matters

The Bruce to Milton project requires a widening of the existing corridor by approximately 53m - 61m. The widening will make it necessary for Hydro One to obtain additional land rights, starting with discussions with property owners. In parallel with these discussions, Hydro One will also prepare to expropriate easements, and in a limited number of cases purchase property for the widened corridor to meet the project schedule. Payment for expropriated lands will be based on market value. Hydro One plans to install the new towers in line with the existing ones to minimize visual impacts, subject to any environmental and technical constraints.

We appreciate that acquiring property rights can be inconvenient and disruptive to owners. Hydro One will deal with every affected land owner in a fair, open and consistent manner. In summer 2007, a Hydro One property agent will be contacting directly affected property owners to discuss the land acquisition process and answer questions about the project. In the meantime, you can contact us toll free at **1-877-345-6799** or at **community.relations@HydroOne.com**.

Project Considerations

When planning and building new transmission lines, Hydro One considers many factors including:

- Location of access roads
- Pre-construction field work
- Tower design
- Vegetation removal and reforestation
- Local economic effects and benefits

Hydro One has compiled a list of Frequently Asked Questions and a set of Fact Sheets addressing many of these concerns and has developed mitigation guidelines to minimize potential effects. These are available online at **www.HydroOneNetworks.com/BrucetoMilton** and at our public information centres.

Hydro One delivers electricity safely, reliably and responsibly to homes and businesses across the province of Ontario and owns and operates Ontario's 29,000 kilometre high-voltage transmission network that delivers electricity to large industrial customers and municipal utilities, and a 122,000 kilometre low-voltage distribution system that serves about 1.3 million end-use customers and smaller municipal utilities in the province. Hydro One is wholly owned by the Province of Ontario.

Keeping you Informed

Your input is very important to us, and there are many ways you can be involved in both the OEB and EA processes. You can call, write, or email at any time to voice your concerns (see contact information below), show your support, or be added to the mailing list. We will also be sending you further

updates via newsletter as the project moves forward. We also encourage you to attend one of our public information centres (PICs) to learn more about the project and talk personally with Hydro One and OPA staff. The first series of PICs will take place in late April and early May.

Project Timeline

File OEB Application	March 2007
Aboriginal Consultation	March 2007 – Fall 2008
Initiate EA Terms of Reference development	March 2007
Public Information Centres	April / May 2007
Anticipated EA Terms of Reference and OEB approval	Fall 2007
Continue EA, other approvals	Fall 2007 – Fall 2008
Obtain EA and other approvals	Fall 2008
Begin project construction	Fall 2008
Planned project in-service	Fall 2011

Public Information Centre Schedule

April 30	May 1	May 2	May 3	May 7	May 8	May 9
Best Western Governor's Inn	Aquatic Centre Auditorium	Egremont Optimist Centre	Community Hall	Community Centre Grand River Room	Community Centre Shamrock Room	Royal Canadian Legion
Kincardine	Hanover	Holstein	Marsville	Grand Valley	Erin	Acton
4 - 8 pm	4 - 8 pm	4 - 8 pm	4 - 8 pm	4 - 8 pm	4 - 8 pm	4 - 8 pm

Bruce to Milton Connection

Your input is very important to us, and there are many ways you can reach us. If you would like more information about this project and want to be included on the project mailing list, please contact:

Enza Cancilla
Manager, Public Affairs
Corporate Communications
Hydro One Networks Inc.
Fax: (416) 345-6984
Email: community.relations@HydroOne.com

Visit our project website at:
www.HydroOneNetworks.com/BrucetoMilton

Call the project hotline at:
1-877-345-6799
(or 416-345-6799)



Bringing Power to the People of Ontario™

APPENDIX B

1
2
3
4

Bruce to Milton Connection, Newsletter #2, July 2007

Ontario Energy Board Application Schedules

Section 98 – Access to Land Timeline

Motions Day (oral hearing) on requests brought forward from Intervenor, e.g., to stay or adjourn the OEB proceedings	Jun 25, 2007
OEB decision on Intervenor motions	Jul 4, 2007
Issues Day	Jul 9, 2007
Intervenor submit interrogatory questions to Hydro One and these are also filed with the OEB	Jul 16, 2007
Hydro One provides interrogatory responses to Intervenor and these are also filed with the OEB	Jul 23, 2007
Oral hearing in the Town of Orangeville	Jul 30 – 31, 2007

Section 92 - Leave to Construct Timeline

Motions Day (oral hearing) on requests brought forward by Intervenor, e.g., to stay or adjourn the OEB proceedings	Jun 25, 2007
OEB decision on Intervenor motions	Jul 4, 2007
Issues Conference – Hydro One and Intervenor discuss issues for consideration by the OEB	Sept 10-11, 2007
Issues Day – Hydro One and Intervenor propose issues to the OEB	Sept 17-18, 2007
Written questions submitted to Hydro One to be answered at the Technical Conference	Oct 1, 2007
Technical Conference	Oct 15-16, 2007
Intervenor submit interrogatory questions to Hydro One and these are also filed with the OEB	Oct 30, 2007
Hydro One provides interrogatory responses to Intervenor and these are also filed with the OEB	Nov 13, 2007
Intervenor file evidence with the OEB and make it available to Hydro One and other Intervenor	Nov 27, 2007
Hydro One and Intervenor submit interrogatory questions to Intervenor who filed evidence with the OEB. These interrogatories also filed with the OEB	Dec 11, 2007
Intervenor interrogatory responses delivered to Hydro One and other Intervenor, and filed with the OEB	Dec 27, 2007
Oral hearing starts at a location to be determined	Jan 14, 2008

Bruce to Milton Connection

Your input is very important to us, and there are many ways you can reach us. If you would like more information about this project and want to be included on the project mailing list, please contact:

Enza Cancilla
Manager, Public Affairs
Corporate Communications
Hydro One Networks Inc.
Fax: (416) 345-6984
Email: Community.Relations@HydroOne.com

Visit our project website at:
www.HydroOneNetworks.com/BruceToMilton

Call the project hotline at:
1-877-345-6799
(or 416-345-6799)



Bringing Power to the People of Ontario™

Printed on recycled paper

July 2007 • Issue 2

Bruce to Milton Connection

ONTARIO'S NEW CLEAN ENERGY CORRIDOR

Property Owner Update

We would like to provide you with an update about Hydro One Networks Inc.'s (Hydro One) Bruce to Milton Transmission Reinforcement Project. We understand that property owners need timely and relevant information about the process and key milestones. We're committed to ensuring you have the information you need to understand the impacts on your property, your rights as a property owner, and how you can participate in the approvals processes. At this spring's public information centres and in subsequent discussions with local councils and other stakeholders, we heard that property owners want more information about how to participate in the Environmental Assessment (EA) and Ontario Energy Board (OEB) processes. To this end, the OEB sent out a letter of clarification to affected property owners on May 25, 2007, and we've outlined below some additional information on the key steps and timelines for our applications currently before the OEB and the EA process.



Spring Public Information Centres

We were pleased to meet many of you at our first round of public information centres (PICs) held from April 30 to May 9, 2007. Over 500 people attended and more than 50% were property owners who are directly affected by the proposed transmission line. Several important issues were raised in discussions with our real estate representatives, as well as other project staff. The PICs were just the first of many opportunities you will have to discuss your issues with Hydro One and provide input into this process.

Comments received during this first round of PICs have been considered in the development of the draft EA Terms of Reference and addressed in the EA. For a complete summary of the PICs you can download a copy of the Bruce to Milton Transmission Reinforcement PIC Report, June 25, 2007 from Hydro One's website.

Key issues identified at the PICs:

- Fair treatment of affected property owners
- Impact on agricultural operations
- Negotiation of land rights with property owners vs. expropriation
- Potential impacts on planned commercial development and municipal property tax assessment
- Alignment of the new transmission line relative to the existing lines and consideration of possible re-alignments
- Need for more details on how to participate in the OEB and EA processes
- Woodlot impacts and reforestation policy

You also told us... *

Information displays at the PIC were helpful (97% of respondents)

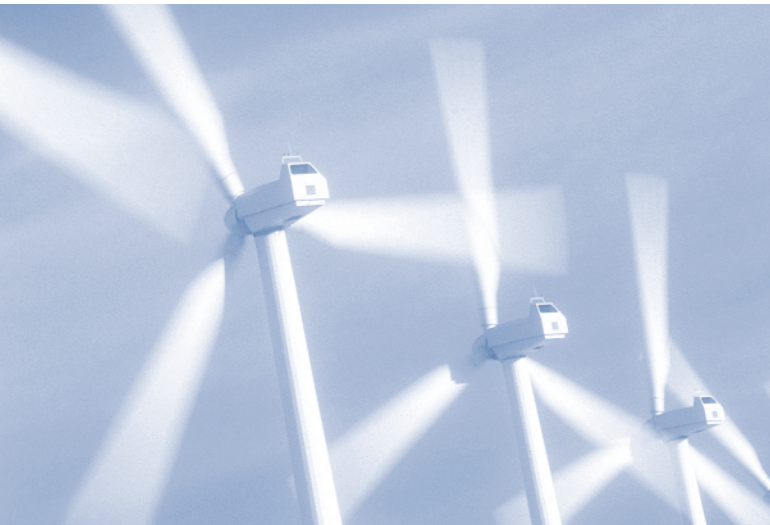
Hydro One staff adequately answered your questions (85% of respondents)

* Based on 95 comment forms completed at PIC

INSIDE

- 1 Spring PICs
- 2 What's New this Summer
- 2 OEB Process Highlights
- 2 Next Steps in EA Process
- 3 Your Input on EA ToR
- 4 OEB Application Schedules





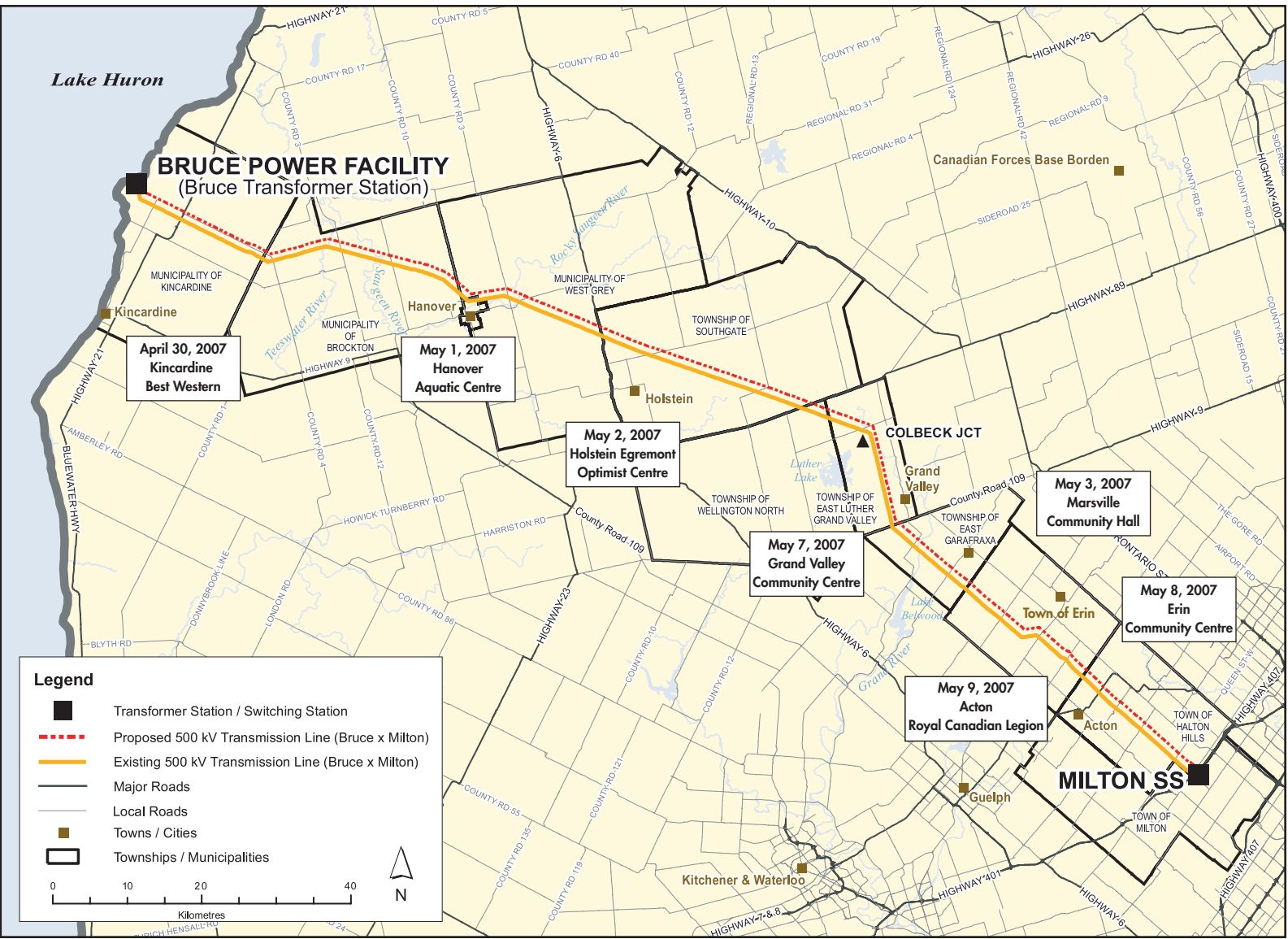
What's Happening this Summer?

Starting this month, a property agent representing Hydro One will be in touch with you to set up a meeting. A property agent will be assigned to your file, and will be your Hydro One key point of contact. During this first call, you can expect the property agent to address general property issues and arrange to meet with you in person. Our expectation is that these individual meetings will be scheduled at your convenience between July and September.

We appreciate that some property owners may have an immediate need to discuss concerns with Hydro One. If this is the case, we ask you to call us directly on our toll-free Project Hotline at 1-877-345-6799. We will endeavour to call you back within 48 hours. If you have already contacted us, rest assured that we have registered your request in our database and we will be returning your call shortly.

OEB Process Highlights

In June and July, the OEB issued Procedural Orders for Hydro One's Early Access to Land and Leave to Construct applications, and held a "Motions Day" hearing. The procedural orders outline the steps and timelines for the review and approval of the two Hydro One applications. On July 4th, the OEB released a decision on the issues raised by Intervenor at the Motions Day. Some key OEB decisions include an oral hearing for the Early Access application at the end of July in Orangeville, and the deferral of the Leave



Study Area Map and Public Information Centre Locations

to Construct hearing until January 2008. For more details, visit the OEB website at: www.oeb.gov.on.ca/html/en/industryrelations/ongoingprojects_bruce_milton.htm or call its toll-free number at 1-877-632-2727.

Next Steps in the EA Process

The next stage in the EA process involves the review of a Draft Terms of Reference (ToR) which outlines how the subsequent EA process will be conducted. It is an important document because it specifies the options that will be considered in the EA and describes the scope of analysis.

The draft ToR for the Bruce to Milton Transmission Reinforcement Project will be completed and posted on the Hydro One website on July 12, 2007. Commenting on the Terms of Reference is just one way you can participate in the EA process.

Your Input on the EA Terms of Reference is Important

You can view a copy of the draft ToR starting on July 12th by visiting our website at: www.HydroOneNetworks.com/BrucetoMilton or calling our toll free Project Hotline at 1-877-345-6799 to get the document on CD.

Your comments on the ToR should be directed to: BrucetoMilton@dillon.ca or by mail to **BRUCE TO MILTON PROJECT** c/o Dillon Consulting Limited, 235 Yorkland Blvd., Suite 800, Toronto, ON M2J 4Y8. Hydro One will also be obtaining input from regulatory agencies on the draft ToR. We will consider your comments, along with agency comments, update the document, and then submit a Proposed ToR to the Minister of the Environment for approval. At this point, we will also publish notices in local newspapers advising that the document has been submitted.

The Ministry of the Environment will then initiate its own review of the document, which includes an agency review and posting a notice on the Ministry of Environment's website: www.ene.gov.on.ca/envision/env_reg/ea/english/EAs/EAs_index.htm for public review.

Once the review period is over, the Minister will make a decision to either approve the ToR as is or with conditions, or reject the ToR. If approved, the project will continue into the Environmental Assessment phase, at which time additional rounds of PICs will be held. See the enclosed EA Fact Sheet for more information on this process.

EA Process	
Submit Proposed EA Terms of Reference	August 2007
Initiate EA	October 2007
Draft EA Document Review	Spring 2008
Final Environmental Assessment Submitted	Summer 2008
Decision	Fall 2008

EA Consultation Activities

The public, stakeholders and Aboriginal People will continue to be engaged in the EA process through:

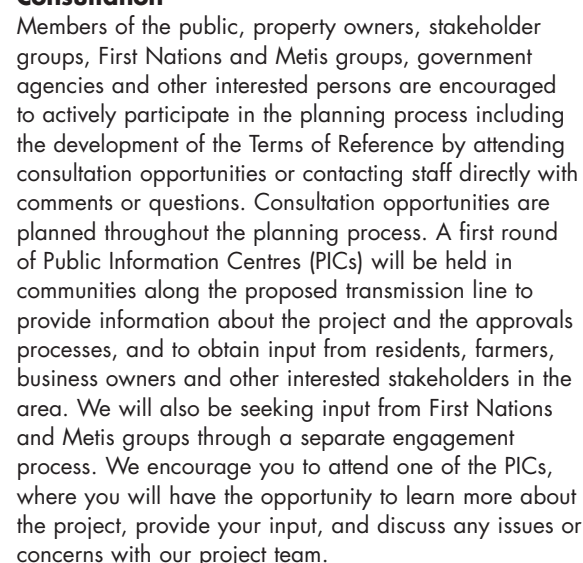
- Public notices published in local newspapers
- Newsletters
- Meetings with property owners
- Public Information Centres
- Issues workshops
- Meetings with agencies, interest groups and municipal representatives
- Meetings with Aboriginal People

APPENDIX B

1
2
3
4

PIC newspaper ad, March 2007

ONTARIO'S NEW CLEAN ENERGY CORRIDOR



Bringing Power to the People of Ontario™

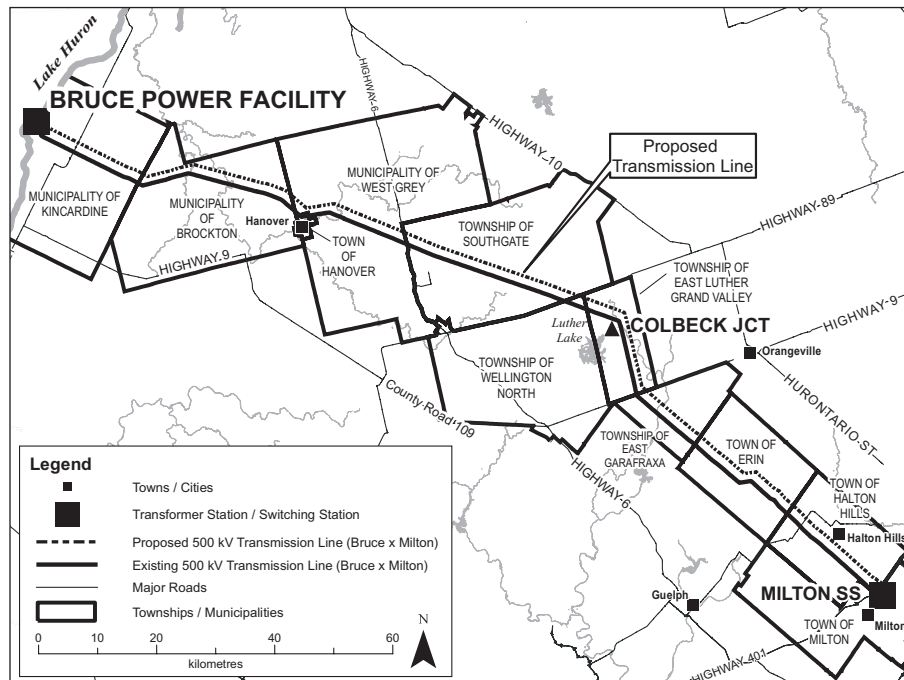
APPENDIX B

1
2
3
4

Keeping you informed newspaper ad, July 2007

Bruce to Milton Transmission Reinforcement Keeping You Informed

ONTARIO'S NEW CLEAN ENERGY CORRIDOR



Hydro One is committed to providing you the information you need to participate in the Environmental Assessment (EA) and Ontario Energy Board (OEB) planning and approvals processes for the Bruce to Milton Transmission Reinforcement Project. Over the coming months, watch for our newsletters, newspaper ads and public information centres and visit our website regularly for the latest updates about our proposal to build a new 500 kV transmission line on a widened existing corridor from the Bruce Power Facility in Kincardine to Hydro One's station in Milton.

Spring Public Information Centres (PICs)

Hydro One wishes to thank those who participated at our spring PICs. Between April 30 and May 9, over 500 people visited our seven PICs from Kincardine to Halton Hills. Your input is important and will be addressed in our EA process. The *Bruce to Milton Transmission Reinforcement PIC Report, June 25, 2007* documents this process, public issues and concerns and our responses. Download a copy of the report from our website to learn more.

WHAT'S NEW THIS SUMMER?

Project Newsletter #2

- The second issue of the *Bruce to Milton Connection* is available on our website or by calling 1-877-345-6799. This issue focuses on landowner interests and also includes a project update, information on the EA and Ontario Energy Board processes and a summary of our spring PICs, so it may be of interest to all stakeholders.

Ontario Energy Board Application Review

- Early Access to Land - an oral hearing will take place in Orangeville on July 30 and 31, 2007. The hearing will enable the OEB to rule on whether, and on what terms and conditions, Hydro One may enter properties along the widened transmission corridor in order to conduct a number of low impact activities, such as soil testing, and legal, biological and archaeological surveys. Intervenor and Hydro One will present arguments in support of their respective cases.
- Leave to Construct - an oral hearing has been scheduled to begin on January 14, 2008. This hearing will focus on the need for the project and its impacts on consumers regarding reliability and price of electricity.
- To learn more about these applications and hearings, visit the the OEB website at: www.oeb.gov.on.ca/html/en/industryrelations/ongoingprojects_bruce_milton.htm or call its toll-free number at 1-877-632-2727.

Environmental Assessment Terms of Reference (ToR)

An EA Terms of Reference outlines how the EA process will be conducted and the scope of analysis. The draft EA ToR for the Bruce to Milton Transmission Reinforcement Project is posted on the Hydro One website. Commenting on the Terms of Reference is another way the public can participate in the EA process.

A Proposed EA ToR, which includes agency, stakeholder, Aboriginal groups and public comments, will be submitted to the Minister of the Environment for approval in early August. The Ministry of the Environment will then initiate its review process of the document. Watch for the **Notice of Submission of the Terms of Reference** in this newspaper in August and for details on how you can provide comments.

Upcoming Events

OEB Access to Land Hearing in Orangeville	July 30 – 31, 2007
Terms of Reference Submitted to Minister of the Environment	August 2007
OEB Leave to Construct Hearing Begins	January 14, 2008

For more information contact:

Hydro One Community Relations
Email: Community.Relations@HydroOne.com

Website: www.HydroOneNetworks.com/BrucetoMilton
Call the project hotline at: 1-877-345-6799 (or 416-345-6799)



Bringing Power to the People of Ontario™