

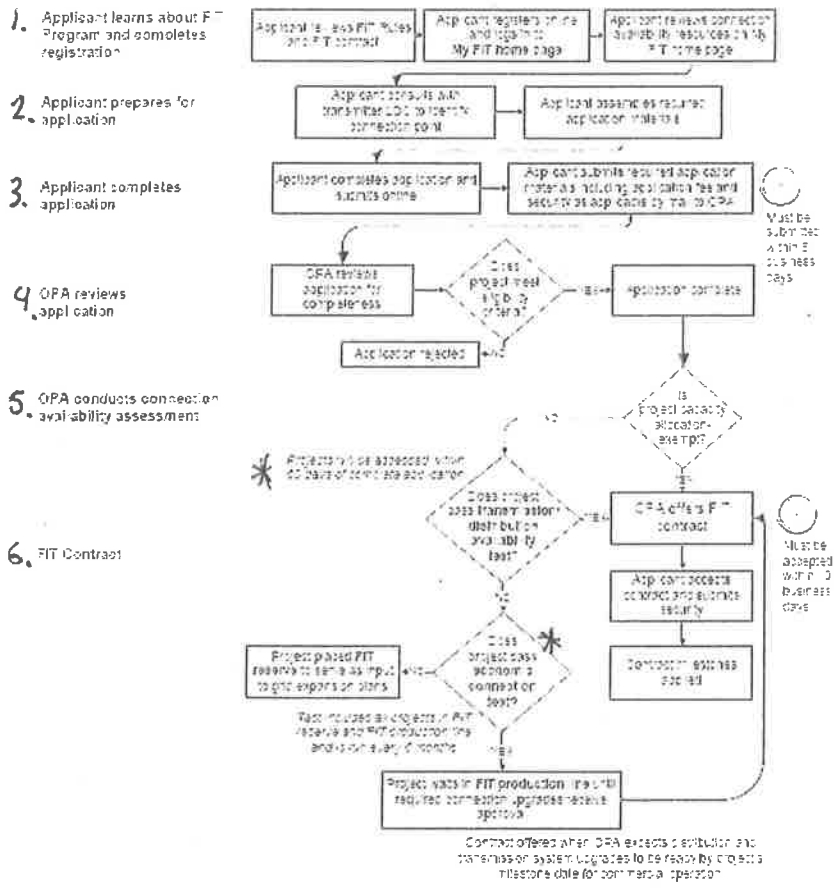
Published on Ontario Power Authority - Feed-in Tariff Program (<http://fit.powerauthority.on.ca>)

[Home](#) > [Printer-friendly](#) > [Printer-friendly](#)

## Program Flowchart

The following diagram summarizes the key steps in the FIT Program application process. You can click anywhere on the diagram to enlarge it.

For an overview description of the FIT Program, please [click here](#) [1].



[2]

[Home](#) | [About Us](#) | [Contact Us](#) | [Terms and conditions](#) | [Careers](#) | [Site Map](#) | [Privacy](#)

© 2010 Ontario Power Authority. All rights reserved. Official Marks of the Ontario Power Authority.

Source URL: <http://fit.powerauthority.on.ca/program-flowchart-0>

### Links:

[1]

[http://fit.powerauthority.on.ca/Storage/11160\\_FIT\\_Program\\_Overview\\_August\\_new\\_price\\_version\\_1.3.1\\_final\\_for\\_posting-oct\\_27.pdf](http://fit.powerauthority.on.ca/Storage/11160_FIT_Program_Overview_August_new_price_version_1.3.1_final_for_posting-oct_27.pdf)

[2] [http://fit.powerauthority.on.ca/images/D\\_WWWRoot\\_Production\\_OPA\\_v264\\_Storage\\_98\\_10708\\_FIT-program-flowchart\\_v2.gif](http://fit.powerauthority.on.ca/images/D_WWWRoot_Production_OPA_v264_Storage_98_10708_FIT-program-flowchart_v2.gif)

