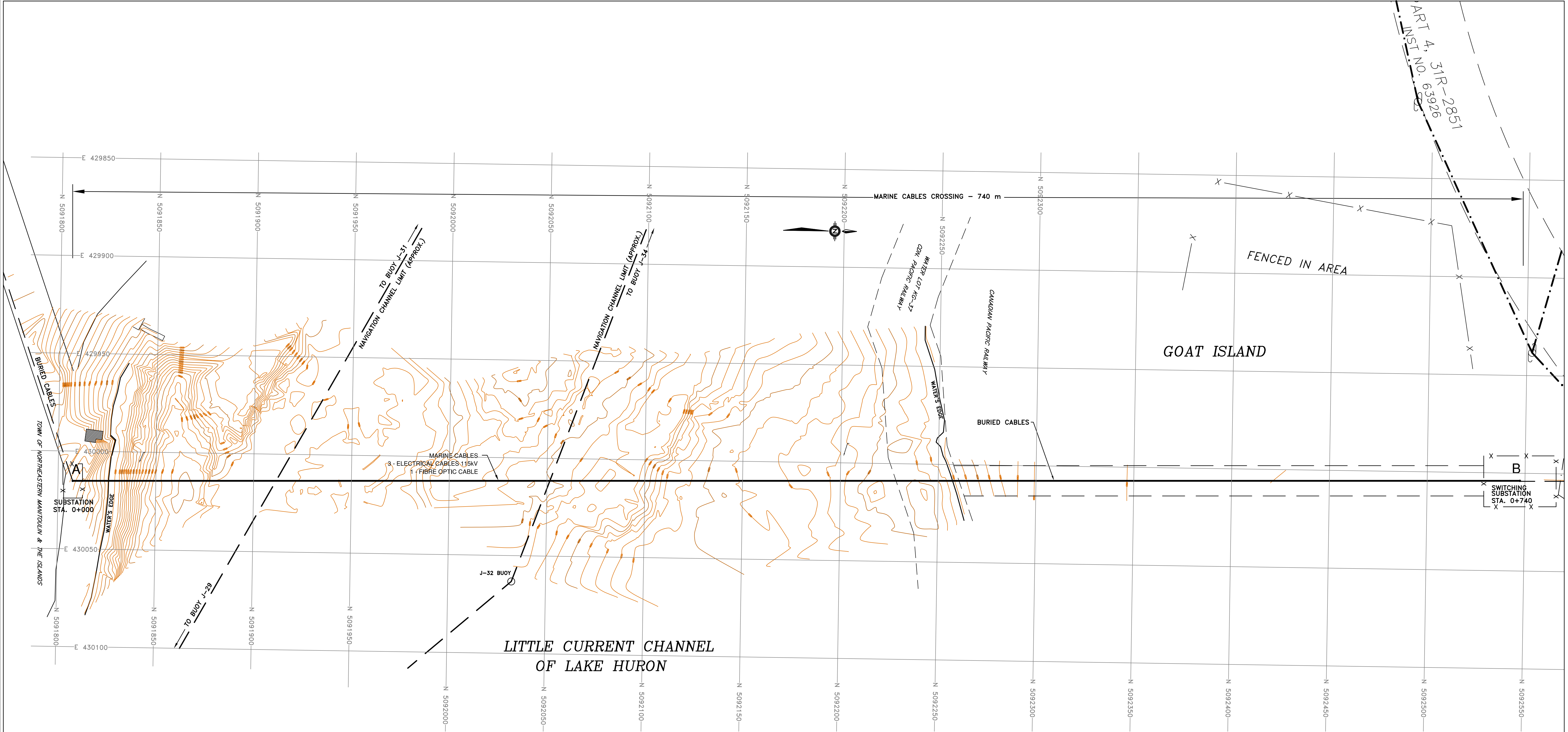


McLean's Mountain Wind Limited Partnership
Exhibit E
Tab 1
Schedule 4

DESIGN SPECIFICATIONS AND OPERATIONAL DATA: SUBMARINE CABLE
GENERAL PLAN AND PROFILE



NOTES :

1. HORIZONTAL COORDINATES SHOWN HEREON ARE BASED ON NAD 83 UTM COORDINATE SYSTEM.
2. ELEVATIONS, SOUNDINGS AND CONTOURS SHOWN HEREON ARE RELATED TO I.G.L.D. 1985 CHART DATUM (176.0 m).
3. SITE SURVEY CONDUCTED ON JUNE 24-25, 2009 BY KEATLEY SURVEYING LTD.
4. NAVIGATION CHART No. 2207 PRODUCED BY CDN HYDROGRAPHIC SERVICES APPLIES TO CROSSING SITE.
5. TOPOGRAPHIC O.B.M. MAP No. 20 17 4200 50900 AND No. 20 17 4300 50900 APPLIES TO CROSSING SITE.

COORDINATES				
PT	NORTHING	EASTING	LAT	LONG
A	5091807.83	430014.80	45°-58'-35" N	81°-54'-12" W
B	5092547.42	430003.87	45°-58'-58" N	81°-54'-13" W

GENERAL NOTES

THIS DOCUMENT HAS BEEN PREPARED BASED IN PART UPON INFORMATION FURNISHED BY OTHERS. CONSULTANT CANNOT ASSURE THE ACCURACY OF INFORMATION BY OTHERS AND THIS IS NOT RESPONSIBLE FOR THE ACCURACY OF THIS DOCUMENT, OR FOR ANY ERROR OR OMISSION THAT MAY HAVE BEEN INCORPORATED INTO IT AS A RESULT. THOSE RELYING ON THIS DOCUMENT ARE ADVISED TO OBTAIN INDEPENDENT VERIFICATION OF ITS ACCURACY BEFORE APPLYING IT FOR ANY PURPOSE.

DRAFT

CONSULTANT:



MARINE CONSULTANT:



NO.	REVISIONS	DATE	APPROVED
	ISSUED FOR PERMIT	MAR 2010	
	ISSUED FOR COMMENTS	JUL 2011	

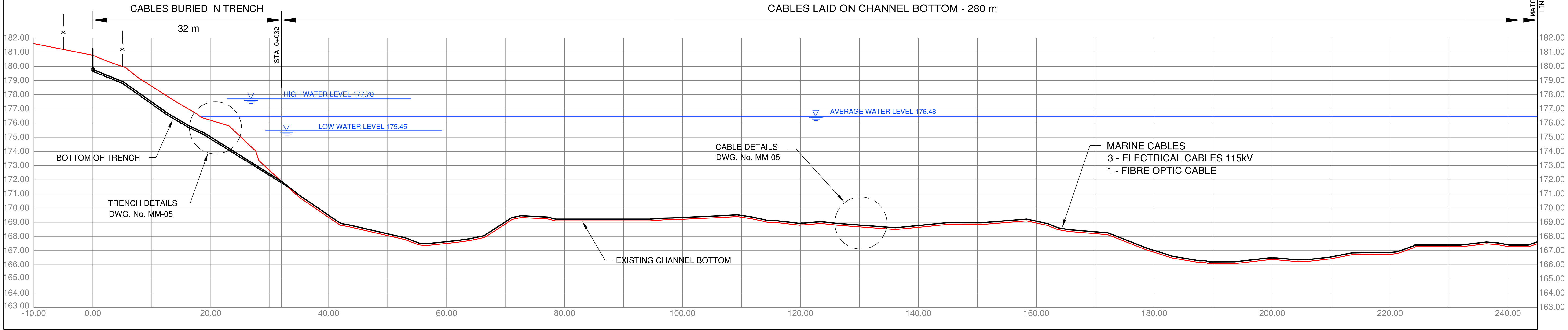
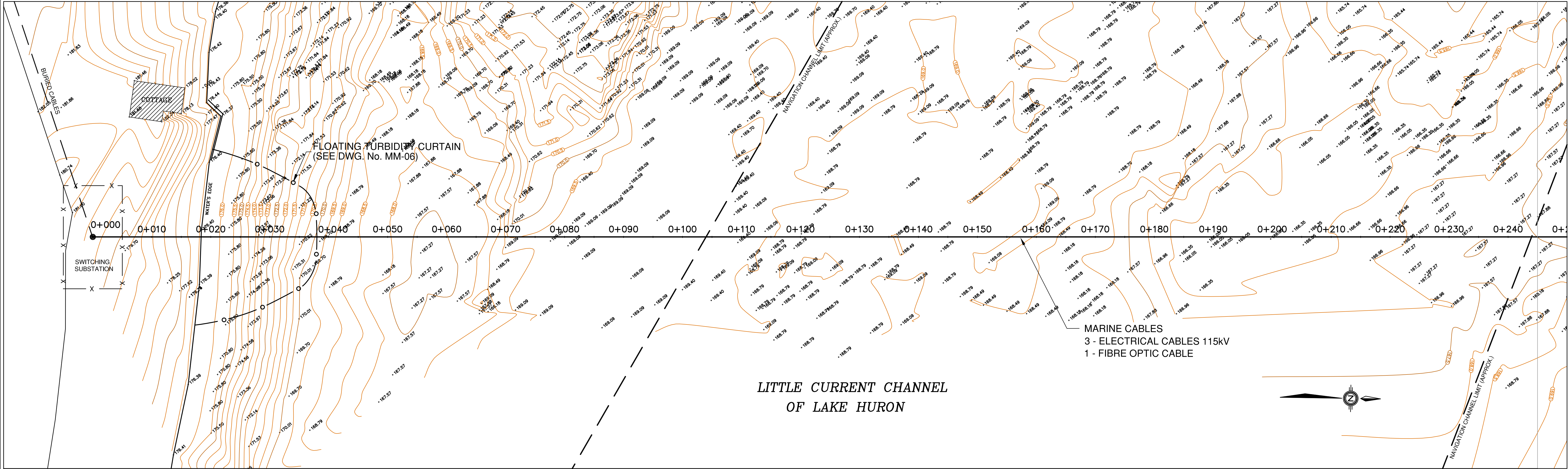
McLEAN'S MOUNTAIN WIND FARM
MARINE CABLE CROSSING

GENERAL PLAN



NORTHLAND
POWER INC.

SCALE HOR. 1:600	VERT. ---	DRAWING No. MM-01
DESIGN C.B.F.	DRAWN P.J.P.	REV. No.
REVIEWED C.B.F.	DATE JULY 2011	



STATION	0+000	0+010	0+020	0+030	0+040	0+050	0+060	0+070	0+080	0+090	0+100	0+110	0+120	0+130	0+140	0+150	0+160	0+170	0+180	0+190	0+200	0+210	0+220	0+230	0+240	0+250
GROUND ELEVATION	180.8	178.7	176.2	172.7	169.3	168.0	167.5	169.0	169.1	169.1	169.2	169.4	168.9	168.7	168.6	169.0	169.0	168.2	166.9	166.1	166.3	166.4	166.8	167.3	167.3	
CABLES INVERT	179.8	177.5	175.0	172.4																						
BOTTOM OF TRENCH (approximate)	179.7		174.9	172.4																						

GENERAL NOTES

THIS DOCUMENT HAS BEEN PREPARED BASED IN PART UPON INFORMATION FURNISHED BY OTHERS. CONSULTANT CANNOT ASSURE THE ACCURACY OF INFORMATION BY OTHERS AND THIS IS NOT RESPONSIBLE FOR THE ACCURACY OF THIS DOCUMENT, OR FOR ANY ERROR OR OMISSION THAT MAY HAVE BEEN INCORPORATED INTO IT AS A RESULT. THOSE RELYING ON THIS DOCUMENT ARE ADVISED TO OBTAIN INDEPENDENT VERIFICATION OF ITS ACCURACY BEFORE APPLYING IT FOR ANY PURPOSE.

DRAFT

CONSULTANT:

H.B. WHITE
H.B. WHITE CANADA CORP.

MARINE CONSULTANT:

C.B. FAIRN & ASSOCIATES LTD.

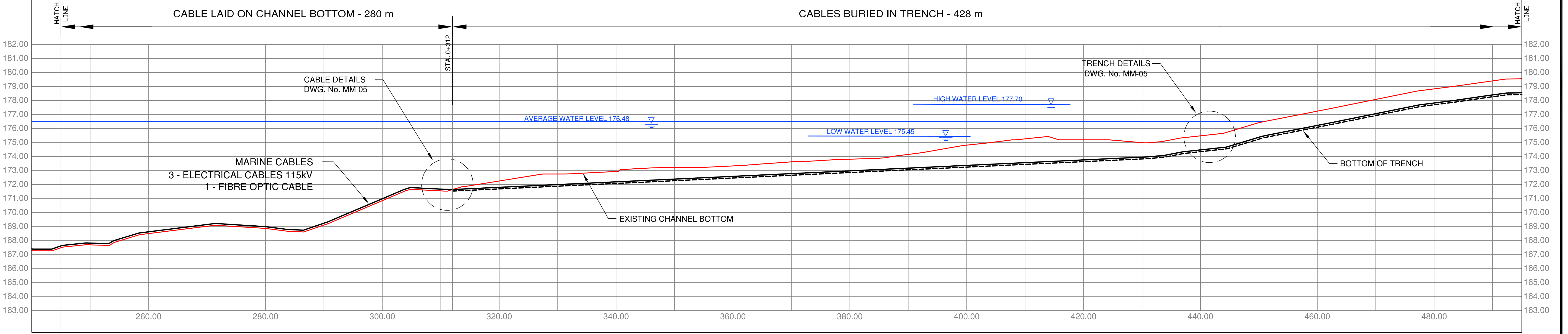
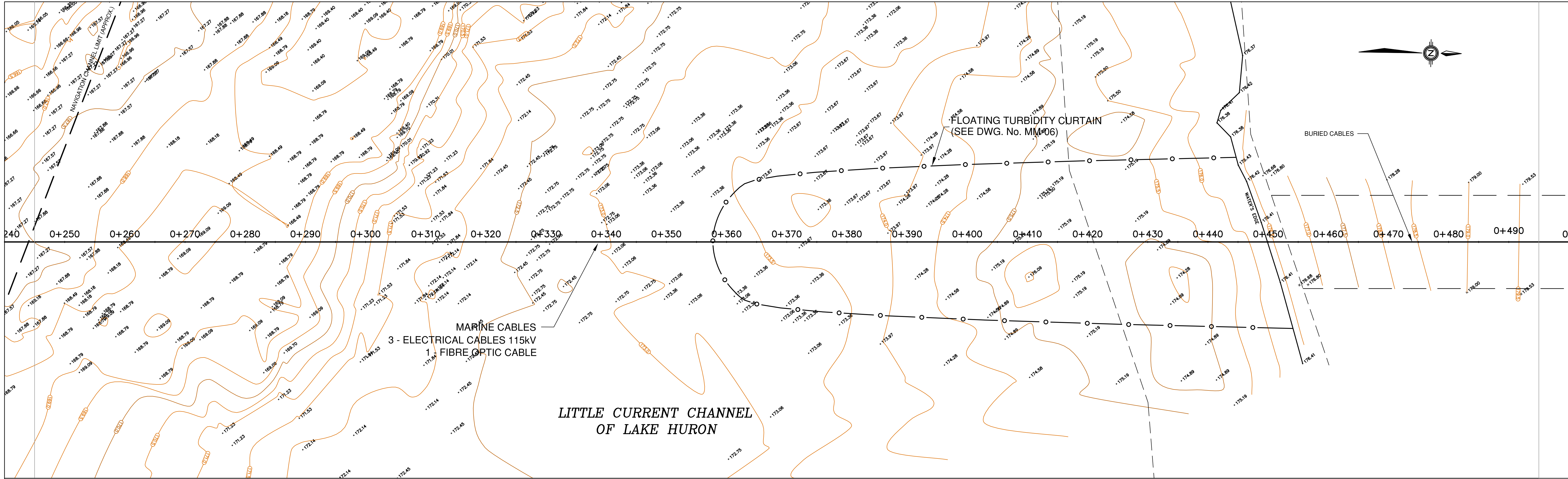
NO.	REVISIONS	DATE	APPROVED
	ISSUED FOR PERMIT	MAR 2010	
	ISSUED FOR COMMENTS	JUL 2011	

McLEAN'S MOUNTAIN WIND FARM
MARINE CABLE CROSSING

PLAN AND PROFILE
STA. 0+000 TO STA. 0+250

NORTHLAND POWER INC.

SCALE HOR. 1:300	VERT. 1:125	DRAWING No. MM-02
DESIGN C.B.F.	DRAWN P.J.P.	REV. No.
REVIEWED C.B.F.	DATE JULY 2011	



STATION	0+250	0+260	0+270	0+280	0+290	0+300	0+310	0+312	0+320	0+330	0+340	0+350	0+360	0+370	0+380	0+390	0+400	0+410	0+420	0+430	0+440	0+450	0+460	0+470	0+480	0+490	0+500
GROUND ELEVATION	167.7	167.7	168.5	169.0	169.9	169.9	169.1	169.1	170.8	170.8	171.5	171.5	171.3	172.3	172.3	173.6	173.6	173.9	175.2	175.0	174.5	175.3	177.3	177.1	178.1	177.8	178.4
CABLES INVERT	167.7	168.5	169.0	169.9	169.1	170.8	171.5	171.5	171.3	171.6	171.9	172.2	172.2	173.5	173.5	173.6	173.7	173.8	173.9	174.0	174.4	175.3	176.2	177.0	177.7	178.3	
BOTTOM OF TRENCH (approximate)							171.5	171.5	171.2	171.6	171.9	172.2	172.2	173.5	173.5	173.6	173.7	173.8	173.9	174.0	174.4	175.3	176.2	177.0	177.7	178.3	

GENERAL NOTES

THIS DOCUMENT HAS BEEN PREPARED BASED IN PART UPON INFORMATION FURNISHED BY OTHERS. CONSULTANT CANNOT ASSURE THE ACCURACY OF INFORMATION BY OTHERS AND THUS IS NOT RESPONSIBLE FOR THE ACCURACY OF THIS DOCUMENT, OR FOR ANY ERROR OR OMISSION THAT MAY HAVE BEEN INCORPORATED INTO IT AS A RESULT. THOSE RELYING ON THIS DOCUMENT ARE ADVISED TO OBTAIN INDEPENDENT VERIFICATION OF ITS ACCURACY BEFORE APPLYING IT FOR ANY PURPOSE.

DRAFT

CONSULTANT:
H.B. WHITE CANADA CORP.

MARINE CONSULTANT:
C.B. FAIRN & ASSOCIATES LTD.

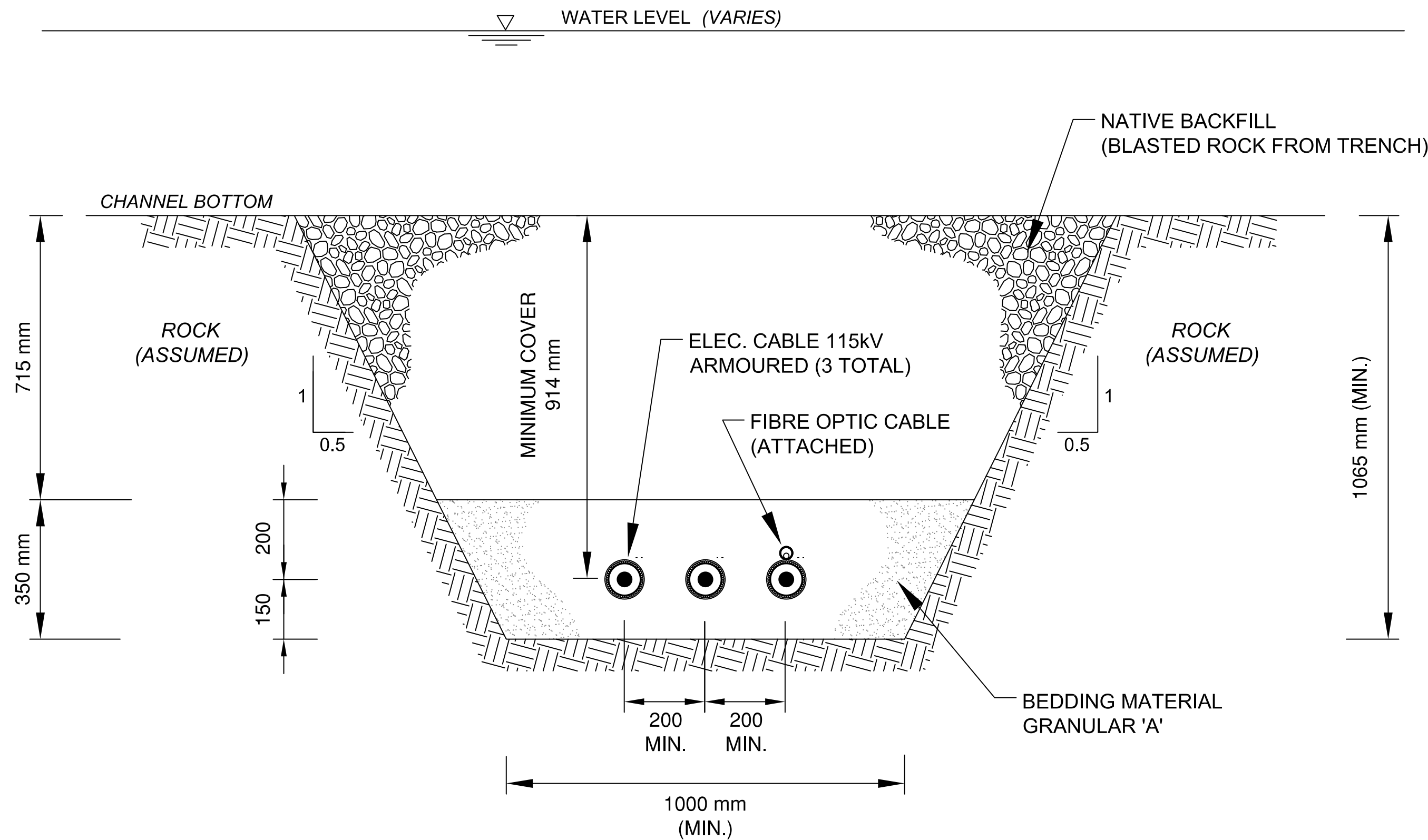
NO.	REVISIONS	DATE	APPROVED
	ISSUED FOR PERMIT	MAR 2010	
	ISSUED FOR COMMENTS	JUL 2011	

McLEAN'S MOUNTAIN WIND FARM
MARINE CABLE CROSSING

PLAN AND PROFILE
STA. 0+250 TO STA. 0+500

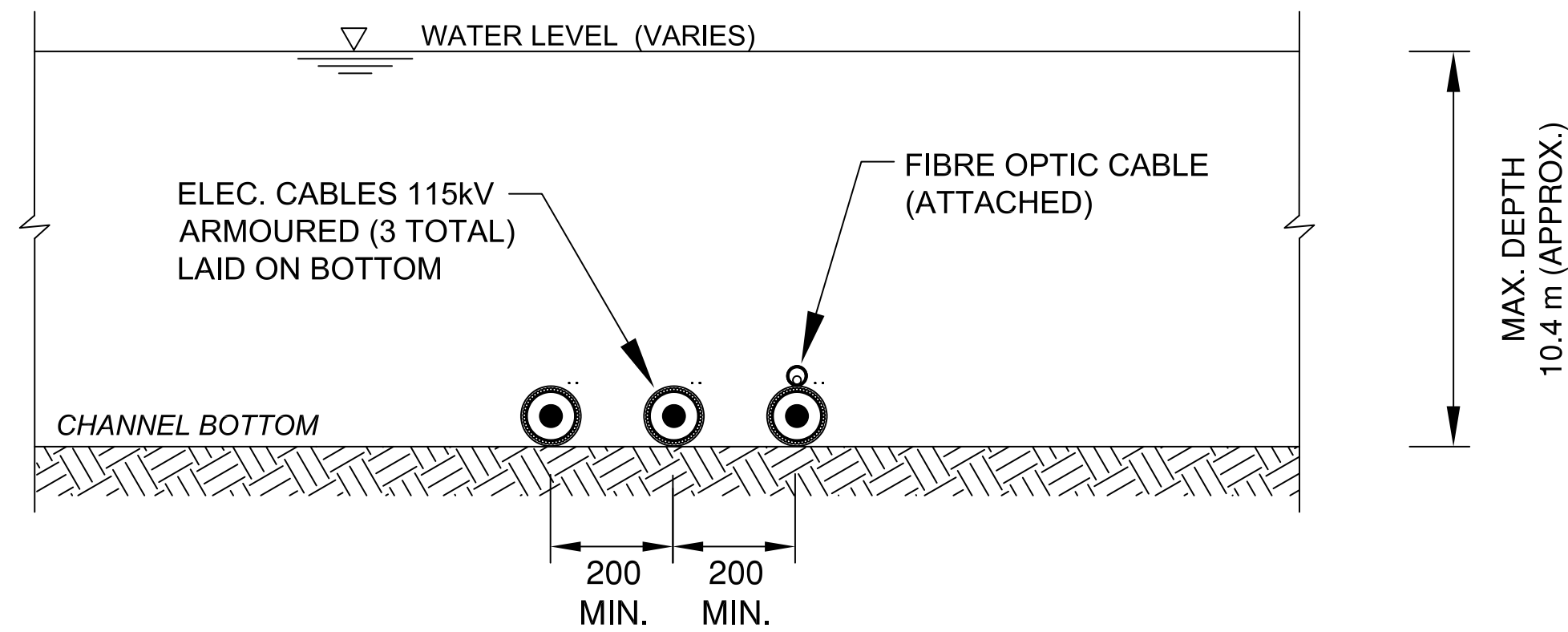
NORTHLAND
POWER INC.

SCALE HOR. 1:300	VERT. 1:125	DRAWING No. MM-03
DESIGN C.B.F.	DRAWN P.J.P.	REV. No.
REVIEWED C.B.F.	DATE JULY 2011	



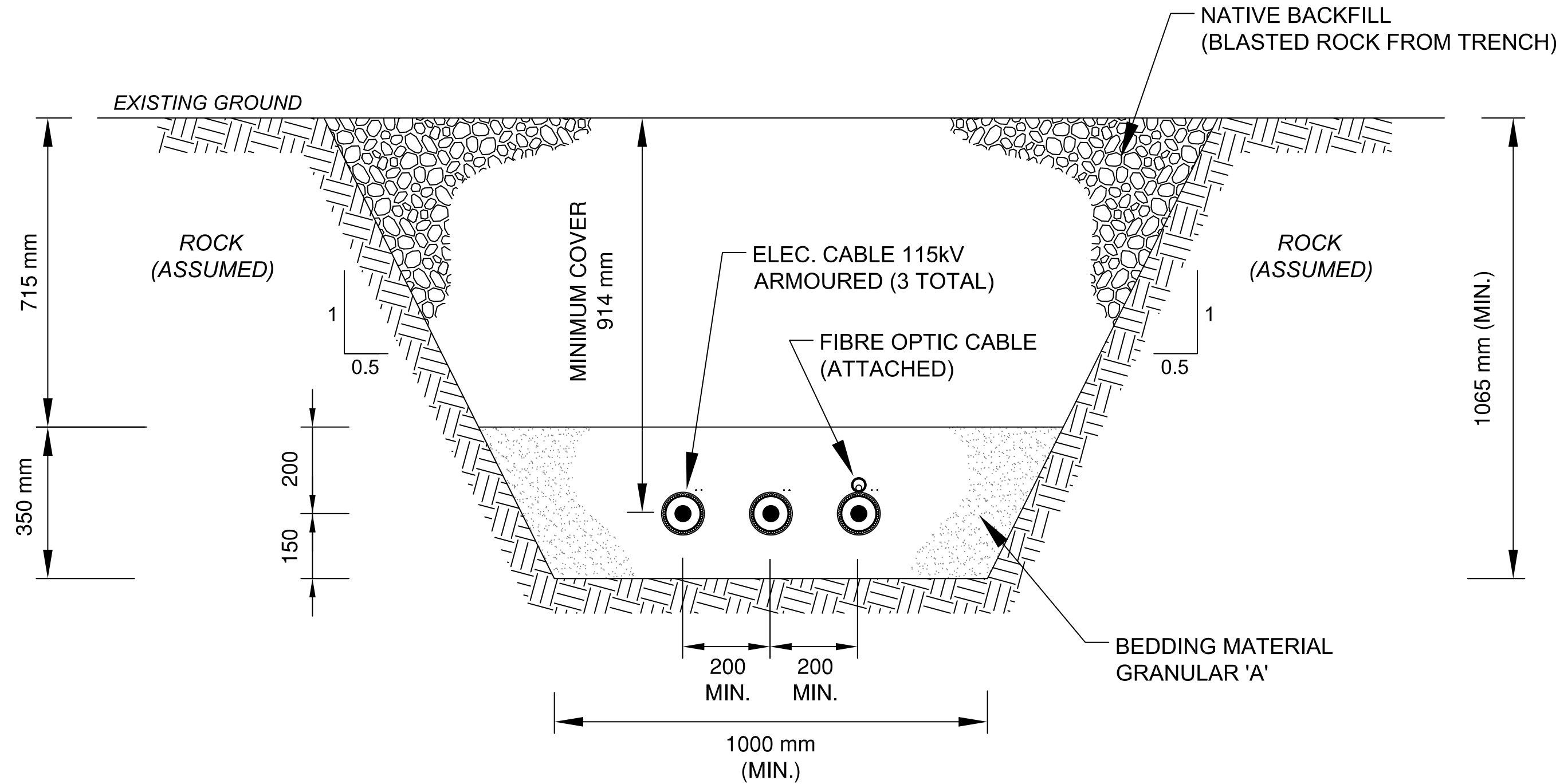
TYPICAL SECTION - MARINE TRENCH

STA. 0+000 TO STA. 0+032
STA. 0+323 TO STA. 0+490±
N.T.S.



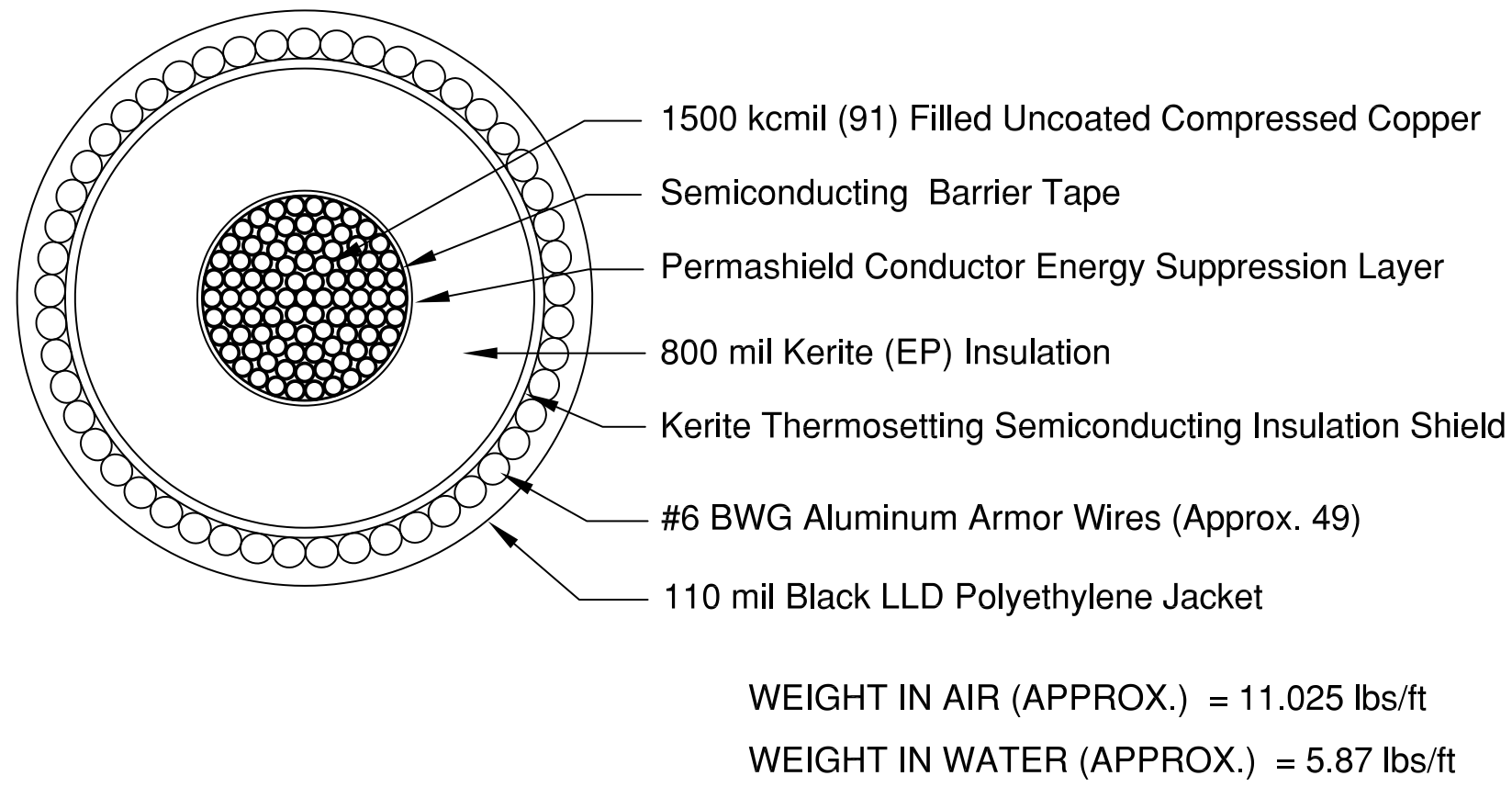
TYPICAL SECTION - CABLES ON LAKE BOTTOM

STA. 0+032 TO STA. 0+323
N.T.S.



TYPICAL SECTION - ON-SHORE TRENCH

STA. 0+490± TO STA. 0+740
N.T.S.



ELEC. CABLE 115 kV - DETAILS (TYP.)

KERITE CATALOG No. 195G95-J8100 OR EQUIVALENT

Component	Description	Diameter	
Conductor	1500 kcmil (91) Copper	1.38"	35.1 mm
Barrier Tape	Semiconducting Fabric Tape	1.39"	35.3 mm
Permashield	Energy Suppression Layer	1.45"	36.8 mm
Insulation	Kerite EP (800 mil)	3.10"	78.7 mm
Semicon	Kerite Thermoset Shield	3.24"	82.3 mm
Wire Shield	#6 BWG AL Wires. (49)	3.65"	92.7 mm
Jacket	Black Polyethylene (110 mil)	3.89"	98.8 mm

GENERAL NOTES

THIS DOCUMENT HAS BEEN PREPARED BASED IN PART UPON INFORMATION FURNISHED BY OTHERS. CONSULTANT CANNOT ASSURE THE ACCURACY OF INFORMATION BY OTHERS AND THUS IS NOT RESPONSIBLE FOR THE ACCURACY OF THIS DOCUMENT, OR FOR ANY ERROR OR OMISSION THAT MAY HAVE BEEN INCORPORATED INTO IT AS A RESULT. THOSE RELYING ON THIS DOCUMENT ARE ADVISED TO OBTAIN INDEPENDENT VERIFICATION OF ITS ACCURACY BEFORE APPLYING IT FOR ANY PURPOSE.

DRAFT

CONSULTANT:

WHITE
H.B. WHITE CANADA CORP.

MARINE CONSULTANT:

C.B. FAIRN & ASSOCIATES LTD.

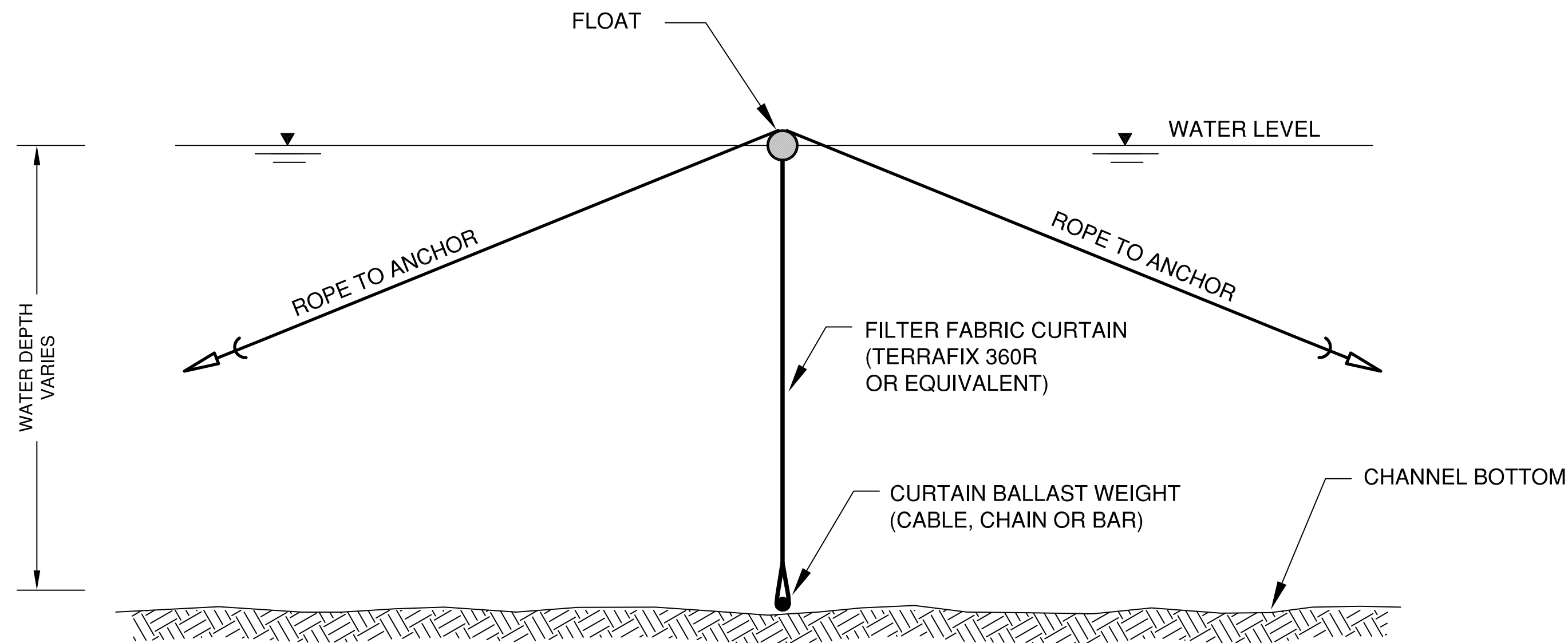
NO.	REVISIONS	DATE	APPROVED
	ISSUED FOR PERMIT	MAR 2010	
	ISSUED FOR COMMENTS	JUL 2011	

McLEAN'S MOUNTAIN WIND FARM
MARINE CABLE CROSSING

TYPICAL SECTIONS &
CABLE DETAILS

**NORTHLAND
POWER INC.**

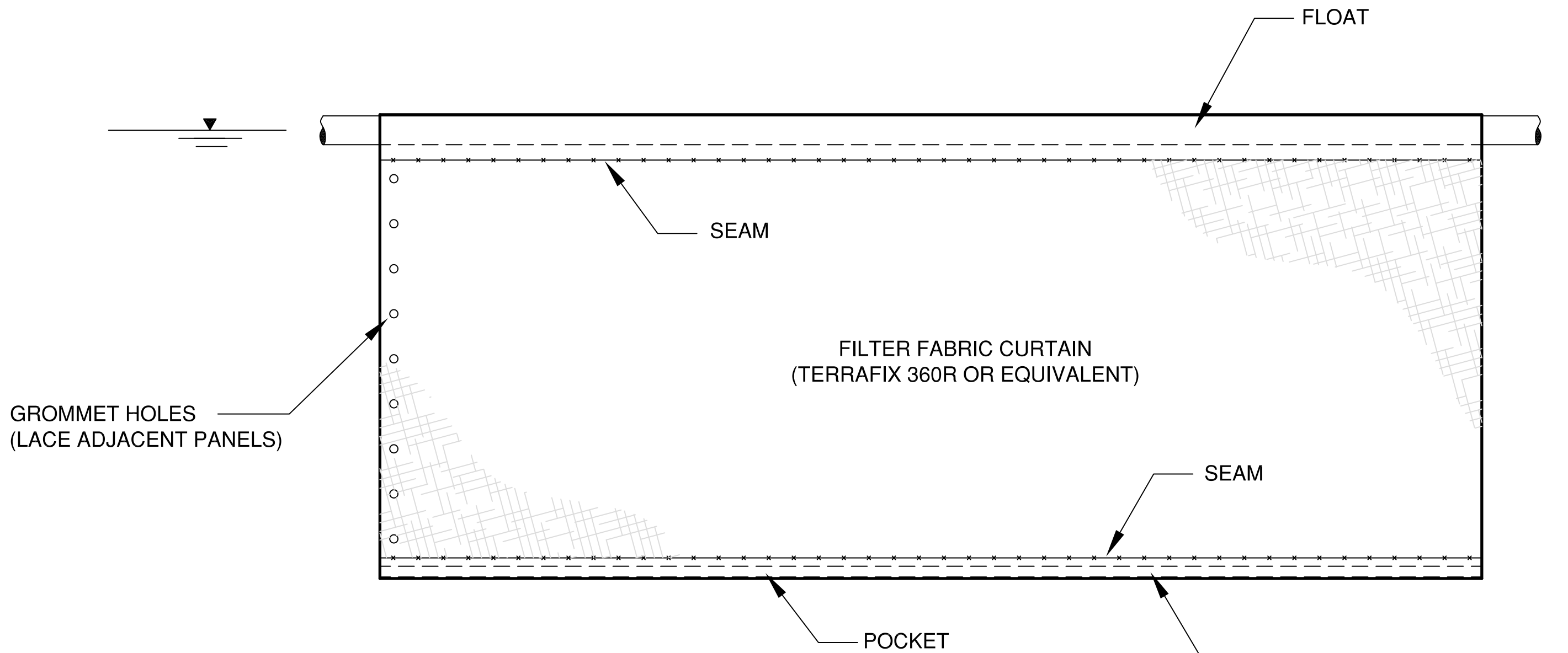
SCALE: HOR.	VERT.	DRAWING No.
DESIGN C.B.F.	DRAWN P.J.P.	MM-05
REVIEWED C.B.F.	DATE JULY 2011	REV. No.



NOTE: TURBIDITY CURTAIN TO BE ADJUSTABLE TO SUIT WATER DEPTHS.

SECTION -
TURBIDITY CURTAIN (TYP.)

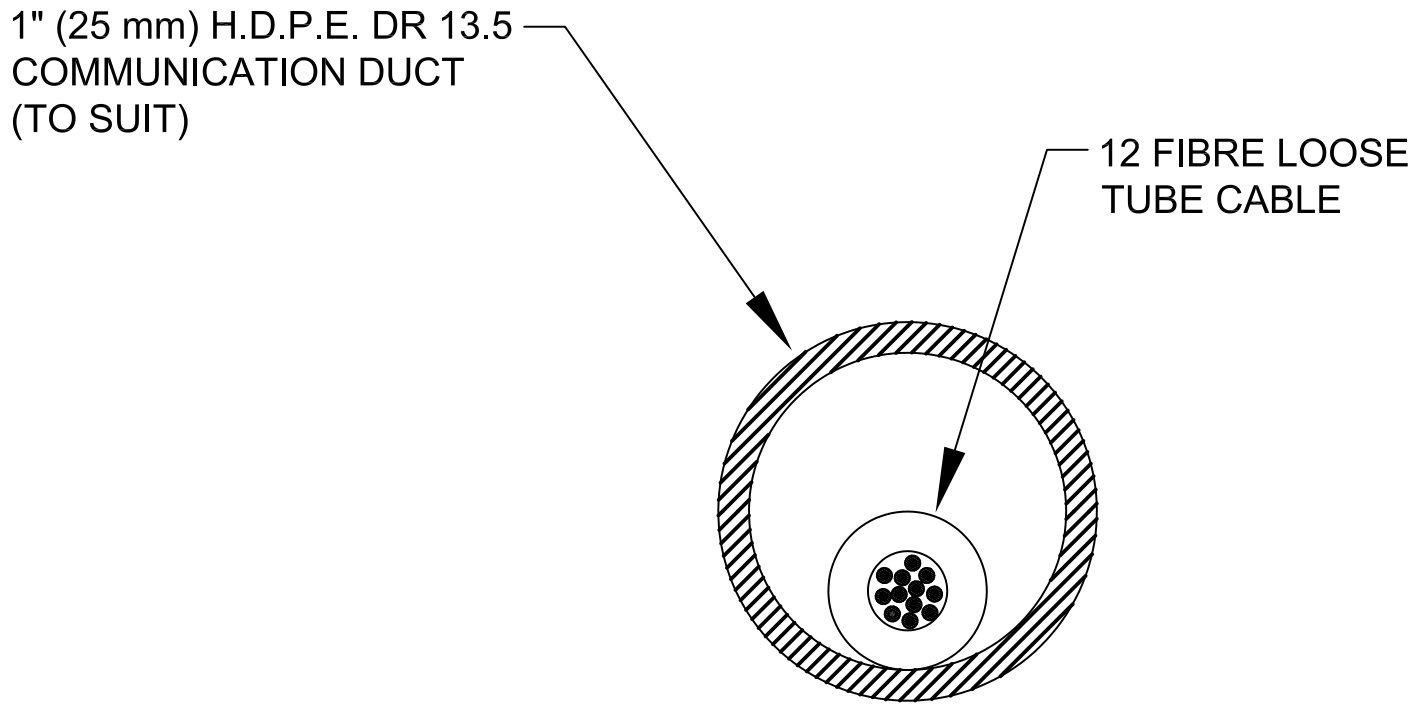
N.T.S.



NOTE: MINIMUM OVERLAP 100 mm FOR CONNECTING CURTAIN SECTIONS.

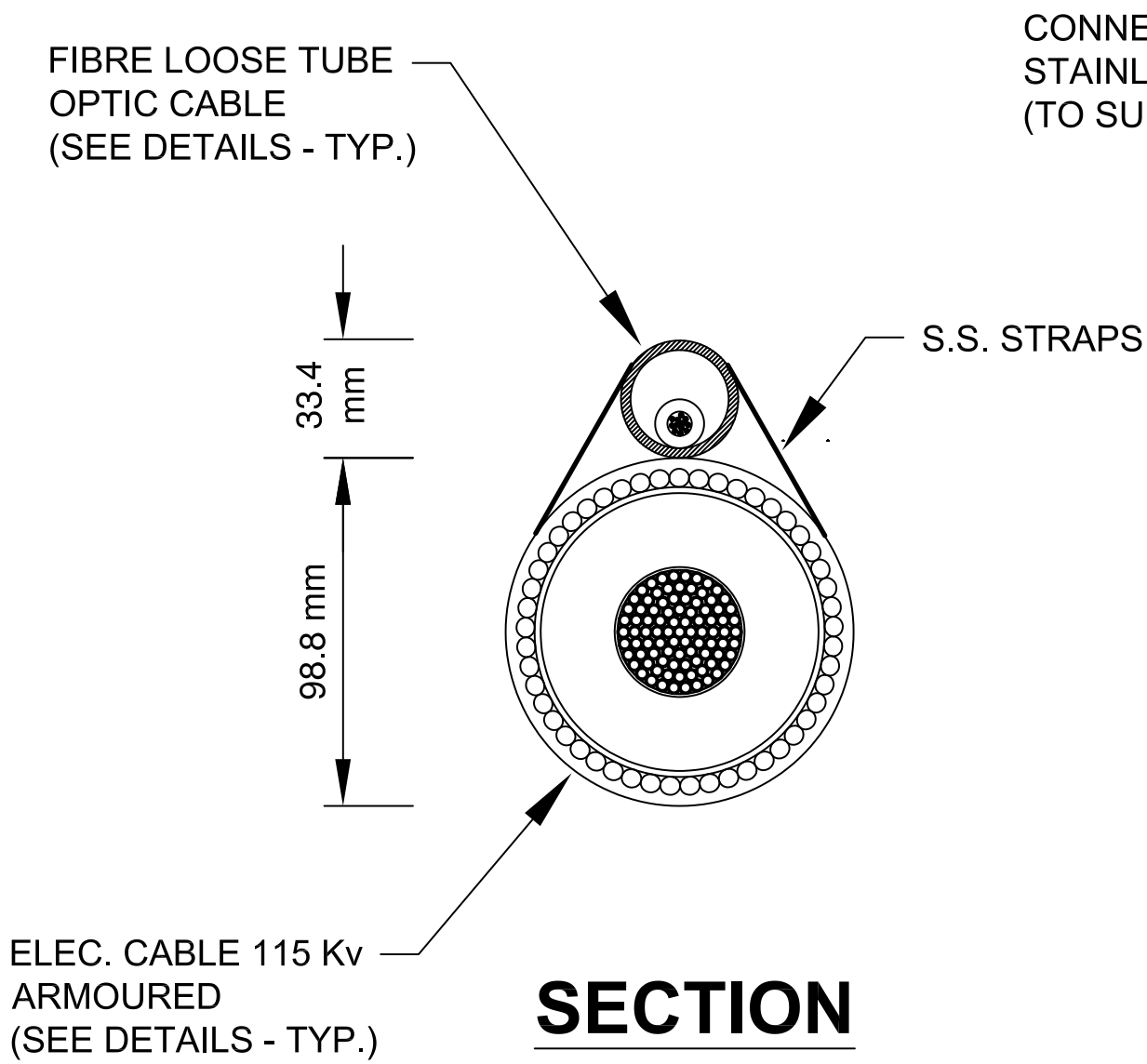
ELEVATION -
TURBIDITY CURTAIN (TYP.)

N.T.S.

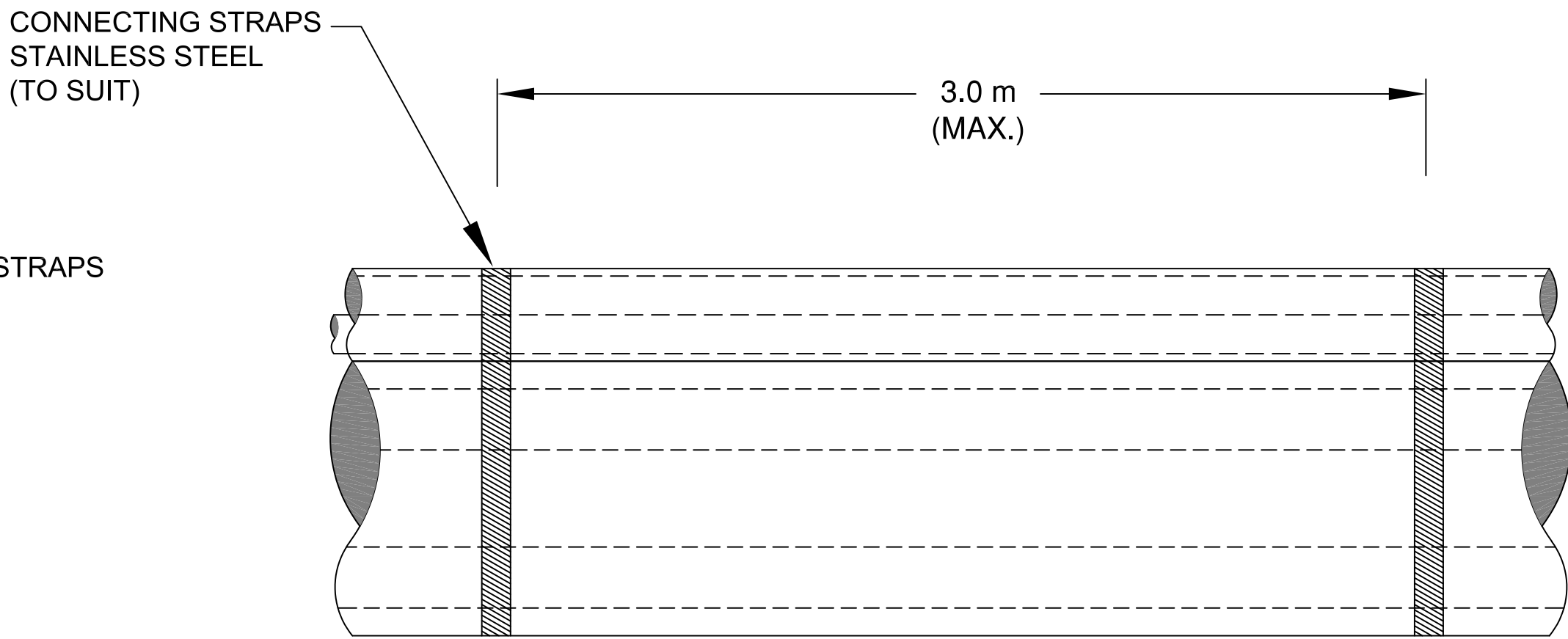


FIBRE OPTIC CABLE -
DETAILS (TYP.)

N.T.S.



SECTION



ELEVATION

ELECTRICAL CABLE
WITH FIBRE OPTIC CABLE

N.T.S.

GENERAL NOTES

THIS DOCUMENT HAS BEEN PREPARED BASED IN PART UPON INFORMATION FURNISHED BY OTHERS. CONSULTANT CANNOT ASSURE THE ACCURACY OF INFORMATION BY OTHERS AND THIS IS NOT RESPONSIBLE FOR THE ACCURACY OF THIS DOCUMENT, OR FOR ANY ERROR OR OMISSION THAT MAY HAVE BEEN INCORPORATED INTO IT AS A RESULT. THOSE RELYING ON THIS DOCUMENT ARE ADVISED TO OBTAIN INDEPENDENT VERIFICATION OF ITS ACCURACY BEFORE APPLYING IT FOR ANY PURPOSE.

DRAFT

CONSULTANT:



MARINE CONSULTANT:



NO.	REVISIONS	DATE	APPROVED
	ISSUED FOR PERMIT	MAR 2010	
	ISSUED FOR COMMENTS	JUL 2011	

McLEAN'S MOUNTAIN WIND FARM
MARINE CABLE CROSSING

CABLE DETAILS &
TURBIDITY CURTAINS



NORTHLAND
POWER INC.

SCALE HOR.	VERT.	DRAWING No.
DESIGN C.B.F.	DRAWN P.J.P.	MM-06
REVIEWED C.B.F.	DATE JULY 2011	REV. No.