

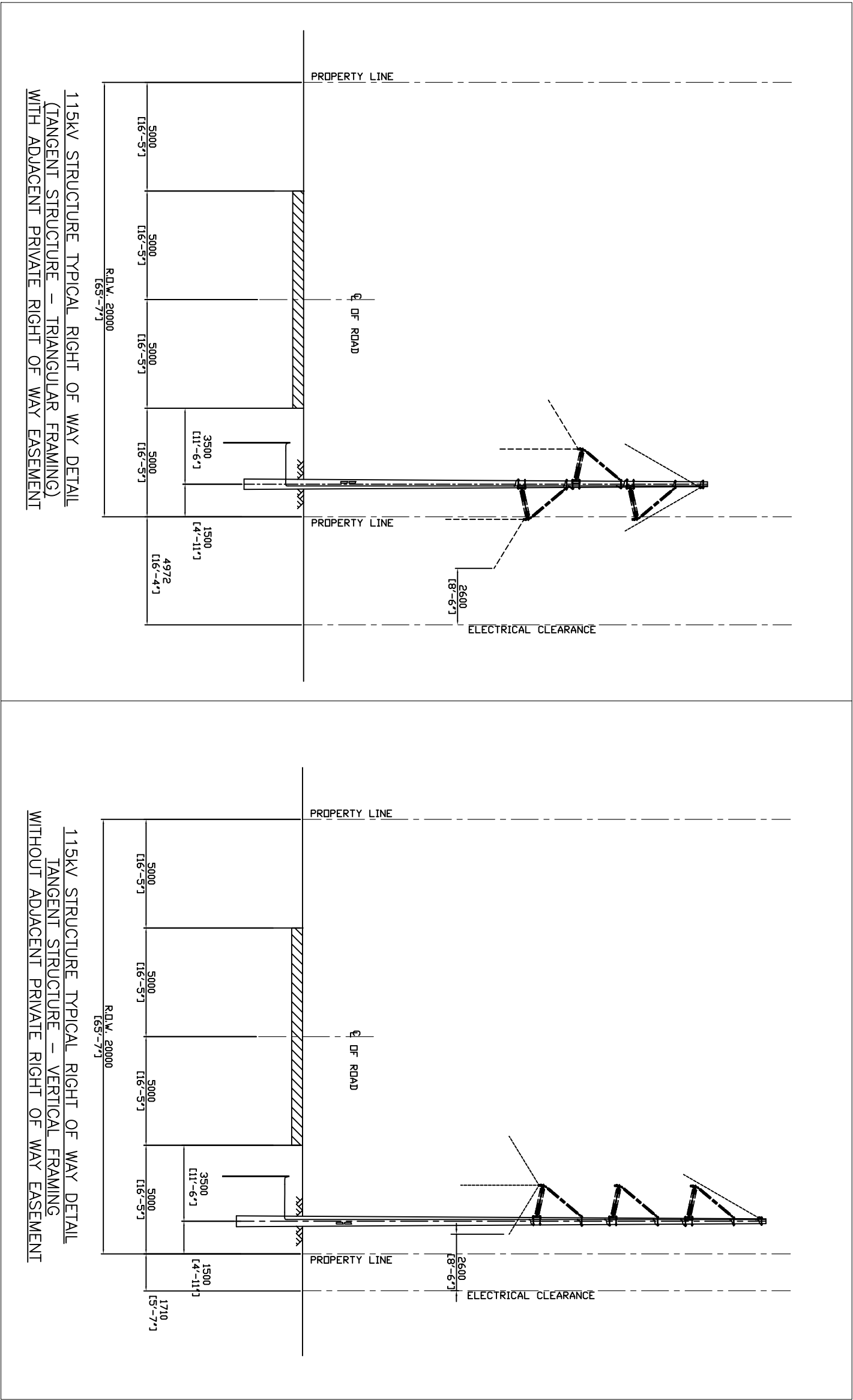
McLean's Mountain Wind Limited Partnership

Exhibit E

Tab 1

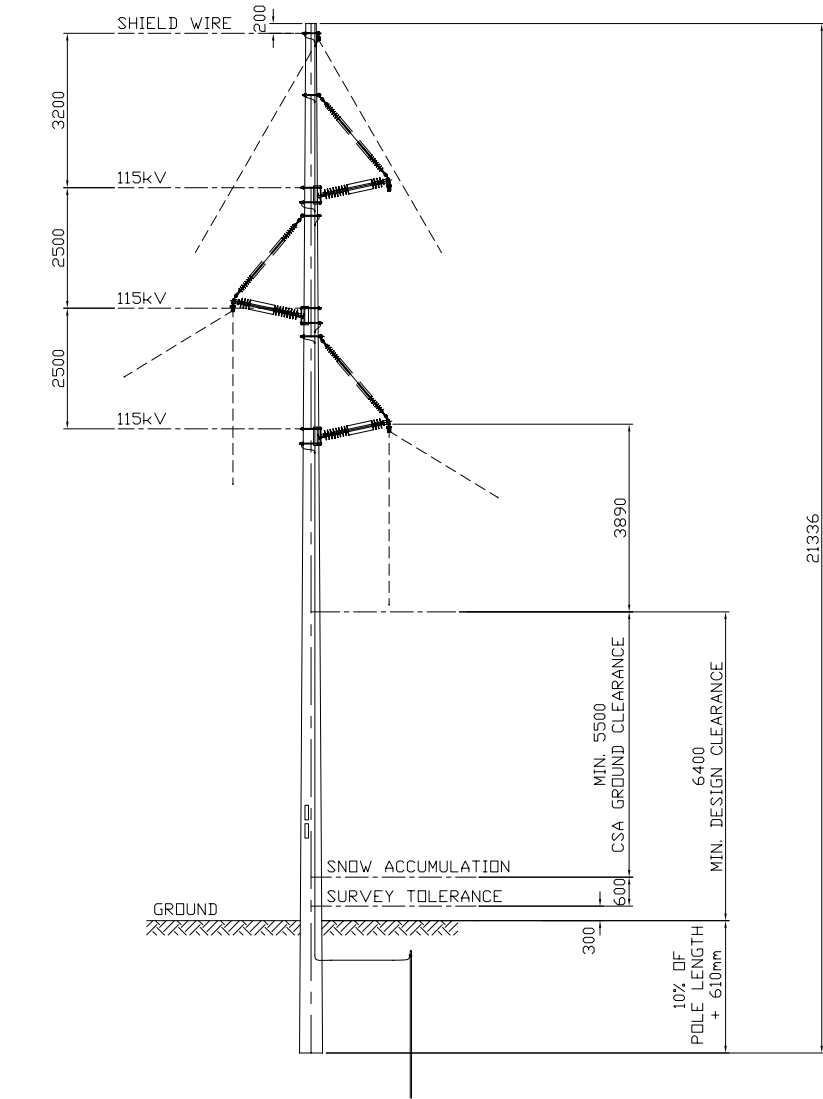
Schedule 5

DESIGN SPECIFICATIONS AND OPERATIONAL DATA: OVERHEAD LINE DESIGN
DRAWINGS AND STRINGING CHARTS



										APPROVED FOR CONSTRUCTION																				Chimax Inc. Engineering Company 10000 Highway 100, Suite 500 Houston, Tex. 77036 Email: chimax@chimax.ca																																							
										CLIENT PROJECT NO.										DEPARTMENT NO.										PROJECT NO.																																							
										PROJECT PHASE										AREA										MCLEAN MOUNTAIN WIND FARM																																							
										PROJECT NO.										ACTIVITY NO.										PACKAGE CODE										SUBJECT										CLIENT DMC. NO.																			
										SCALE										BY										D/M/Y										115KV TRANSMISSION OVERHEAD LINE TYPICAL RIGHT OF WAY DETAIL										DRAWING NO. 1106-P003										REV. B1									
										DGN. JLN										EKNOWG										15/03/11																																							
										15/03/11										15/03/11										15/03/11																																							

										STAMP/SEAL										PROPRIETARY INFORMATION - PROPERTY OF CHIMAX INC. AND IS NOT TO BE LOANED OR REPRODUCED IN ANY WAY WITHOUT THE PERMISSION OF CHIMAX INC.																																																																																									
										B1 09/11/11										ISSUED FOR PERMIT APPLICATION										REF										NUMBER										TITLE										REFERENCES																																																	
										B 26/06/11										CONCEPTUAL ISSUED - FEASIBILITY STUDY																																																																																									
										A 15/03/11										ISSUED FOR REVIEW																																																																																									
										REV D/M/Y										ISSUED FOR																																																																																									
										DR CHK APP APP APP APP										ISS D/M/Y APP																																																																																									
										B1 09/11/11										ISSUED FOR PERMIT APPLICATION																																																																																									
										B 26/06/11										CONCEPTUAL ISSUED - FEASIBILITY STUDY																																																																																									
										A 15/03/11										ISSUED FOR REVIEW																																																																																									
										REV D/M/Y										ISSUED FOR																																																																																									
										B1 09/11/11										ISSUED FOR PERMIT APPLICATION																																																																																									
										B 26/06/11										CONCEPTUAL ISSUED - FEASIBILITY STUDY																																																																																									
										A 15/03/11										ISSUED FOR REVIEW																																																																																									
										REV D/M/Y										ISSUED FOR																																																																																									
										B1 09/11/11										ISSUED FOR PERMIT APPLICATION																																																																																									
										B 26/06/11										CONCEPTUAL ISSUED - FEASIBILITY STUDY																																																																																									
										A 15/03/11										ISSUED FOR REVIEW																																																																																									
										REV D/M/Y										ISSUED FOR																																																																																									
										B1 09/11/11										ISSUED FOR PERMIT APPLICATION																																																																																									
										B 26/06/11										CONCEPTUAL ISSUED - FEASIBILITY STUDY																																																																																									
										A 15/03/11										ISSUED FOR REVIEW																																																																																									
										REV D/M/Y										ISSUED FOR																																																																																									
										B1 09/11/11										ISSUED FOR PERMIT APPLICATION																																																																																									
										B 26/06/11										CONCEPTUAL ISSUED - FEASIBILITY STUDY																																																																																									
										A 15/03/11										ISSUED FOR REVIEW																																																																																									
										REV D/M/Y										ISSUED FOR																																																																																									
										B1 09/11/11										ISSUED FOR PERMIT APPLICATION																																																																																									
										B 26/06/11										CONCEPTUAL ISSUED - FEASIBILITY STUDY																																																																																									
										A 15/03/11										ISSUED FOR REVIEW																																																																																									
										REV D/M/Y										ISSUED FOR																																																																																									
										B1 09/11/11										ISSUED FOR PERMIT APPLICATION																																																																																									
										B 26/06/11										CONCEPTUAL ISSUED - FEASIBILITY STUDY																																																																																									
										A 15/03/11										ISSUED FOR REVIEW																																																																																									
										REV D/M/Y										ISSUED FOR																																																																																									
										B1 09/11/11										ISSUED FOR PERMIT APPLICATION																																																																																									
										B 26/06/11										CONCEPTUAL ISSUED - FEASIBILITY STUDY																																																																																									
										A 15/03/11										ISSUED FOR REVIEW																																																																																									
										REV D/M/Y										ISSUED FOR																																																																																									
										B1 09/11/11										ISSUED FOR PERMIT APPLICATION																																																																																									
										B 26/06/11										CONCEPTUAL ISSUED - FEASIBILITY STUDY																																																																																									
										A 15/03/11										ISSUED FOR REVIEW																																																																																									
										REV D/M/Y										ISSUED FOR																																																																																									
										B1 09/11/11										ISSUED FOR PERMIT APPLICATION																																																																																									
										B 26/06/11										CONCEPTUAL ISSUED - FEASIBILITY STUDY																																																																																									
										A 15/03/11										ISSUED FOR REVIEW																																																																																									
										REV D/M/Y										ISSUED FOR																																																																																									
										B1 09/11/11										ISSUED FOR PERMIT APPLICATION																																																																																									
										B 26/06/11										CONCEPTUAL ISSUED - FEASIBILITY STUDY																																																																																									
										A 15/03/11										ISSUED FOR REVIEW																																																																																									
										REV D/M/Y										ISSUED FOR																																																																																									
										B1 09/11/11										ISSUED FOR PERMIT APPLICATION																																																																																									
										B 26/06/11										CONCEPTUAL ISSUED - FEASIBILITY STUDY																																																																																									
										A 15/03/11										ISSUED FOR REVIEW																																																																																									
										REV D/M/Y										ISSUED FOR																																																																																									
										B1 09/11/11										ISSUED FOR PERMIT APPLICATION																																																																																									
										B 26/06/11										CONCEPTUAL ISSUED - FEASIBILITY STUDY																																																																																									
										A 15/03/11										ISSUED FOR REVIEW																																																																																									
										REV D/M/Y										ISSUED FOR																																																																																									
										B1 09/11/11										ISSUED FOR PERMIT APPLICATION																																																																																									
										B 26/06/11										CONCEPTUAL ISSUED - FEASIBILITY STUDY																																																																																									
										A 15/03/11										ISSUED FOR REVIEW																																																																																									
										REV D/M/Y										ISSUED FOR																																																																																									
										B1 09/11/11										ISSUED FOR PERMIT APPLICATION																																																																																									
										B 26/06/11										CONCEPTUAL ISSUED - FEASIBILITY STUDY																																																																																									
										A 15/03/11										ISSUED FOR REVIEW																																																																																									
										REV D/M/Y										ISSUED FOR																																																																																									
										B1 09/11/11										ISSUED FOR PERMIT APPLICATION																																																																																									
										B 26/06/11										CONCEPTUAL ISSUED - FEASIBILITY STUDY																																																																																									
										A 15/03/11										ISSUED FOR REVIEW																																																																																									
										REV D/M/Y										ISSUED FOR																																																																																									
										B1 09/11/11										ISSUED FOR PERMIT APPLICATION																																																																																									
										B 26/06/11										CONCEPTUAL ISSUED - FEASIBILITY STUDY																																																																																									
										A 15/03/11										ISSUED FOR REVIEW																																																																																									
										REV D/M/Y										ISSUED FOR																																																																																									
										B1 09/11/11										ISSUED FOR PERMIT APPLICATION																																																																																									
										B 26/06/11										CONCEPTUAL ISSUED - FEASIBILITY STUDY																																																																																									
										A 15/03/11										ISSUED FOR REVIEW																																																																																									
										REV D/M/Y										ISSUED FOR																																																																																									
										B1 09/11/11										ISSUED FOR PERMIT APPLICATION																																																																																									
										B 26/06/11										CONCEPTUAL ISSUED - FEASIBILITY STUDY																																																																																									
										A 15/03/11										ISSUED FOR REVIEW																																																																																									
										REV D/M/Y										ISSUED FOR																																																																																									
										B1 09/11/11										ISSUED FOR PERMIT APPLICATION																																																																																									
										B 26/06/11										CONCEPTUAL ISSUED - FEASIBILITY STUDY																																																																																									
										A 15/03/11										ISSUED FOR REVIEW																																																																																									
										REV D/M/Y										ISSUED FOR																																																																																									
										B1 09/11/11										ISSUED FOR PERMIT APPLICATION																																																																																									
										B 26/06/11										CONCEPTUAL ISSUED - FEASIBILITY STUDY																																																																																									
										A 15/03/11										ISSUED FOR REVIEW																																																																																									
										REV D/M/Y										ISSUED FOR																																																																																									
										B1 09/11/11										ISSUED FOR PERMIT APPLICATION																																																																																									
										B 26/06/11										CONCEPTUAL ISSUED - FEASIBILITY STUDY																																																																																									
										A 15/03/11										ISSUED FOR REVIEW																																																																																									
										REV D/M/Y										ISSUED FOR																																																																																									
										B1 09/11/11										ISSUED FOR PERMIT APPLICATION																																																																																									
										B 26/06/11										CONCEPTUAL ISSUED - FEASIBILITY STUDY																																																																																									
										A 15/03/11										ISSUED FOR REVIEW																																																																																									
										REV D/M/Y										ISSUED FOR																																																																																									
										B1 09/11/11										ISSUED FOR PERMIT APPLICATION																																																																																									
										B 26/06/11										CONCEPTUAL ISSUED - FEASIBILITY STUDY																																																																																									
										A 15/03/11										ISSUED FOR REVIEW																																																																																									
										REV D/M/Y										ISSUED FOR																																																																																									
										B1 09/11/11										ISSUED FOR PERMIT APPLICATION																																																																																									
										B 26/06/11										CONCEPTUAL ISSUED - FEASIBILITY STUDY																																																																																									
										A 15/03/11										ISSUED FOR REVIEW																																																																																									
										REV D/M/Y										ISSUED FOR																																																																																									
										B1 09/11/11										ISSUED FOR PERMIT APPLICATION																																																																																									
										B 26/06/11										CONCEPTUAL ISSUED - FEASIBILITY STUDY																																																																																									
										A 15/03/11										ISSUED FOR REVIEW																																																																																									
										REV D/M/Y										ISSUED FOR																																																																																									
										B1 09/11/11										ISSUED FOR PERMIT APPLICATION																																																																																									
										B 26/06/11										CONCEPTUAL ISSUED - FEASIBILITY STUDY																																																																																									
										A 15/03/11										ISSUED FOR REVIEW																																																																																									
										REV D/M/Y										ISSUED FOR																																																																																									
										B1 09/11/11										ISSUED FOR PERMIT APPLICATION																																																																																									
										B 26/06/11										CONCEPTUAL ISSUED - FEASIBILITY STUDY																																																																						</																			



115kV TRANSMISSION LINE
1CCT TANGENT (0 – 2°) TRIANGULAR FRAMING
W-S115-02-TX-WC0XX

DESIGN NOTES:

THE PROPOSED STRUCTURE FRAMING, POLE REQUIREMENT AND RECOMMENDATION STANDARD SPAN ARE BASED ON THE FOLLOWING DESIGN DATA:

- A. DESIGN CRITERIA**
- MEAN ANNUAL SNOW ACCUMULATION: 0.6 m
 - ADDITIONAL SURVEY TOLERANCE: 0.3 m
 - MINIMUM DESIGN LOADING
CSA HEAVY CONDITION
HOURLY WIND 400 Pa
RADIAL ICE THICKNESS 12.7 mm (1/2")
CONDUCTOR TEMPERATION -20°C
 - WIND LOADING:
(i) HOURLY WIND (1/100) 480 Pa (~101 km/hr)
(ii) HOURLY WIND (1/50) 420 Pa (~94 km/hr)
(iii) HOURLY WIND (1/30) 370 Pa (~88 km/hr)
(iv) GUST WIND 130 km/hr
 - ICE LOADING:
RADIAL ICE THICKNESS (STRUCTURAL) 25.4 mm (1")
RADIAL ICE THICKNESS (CLEARANCE) 12.7 mm (1/2")
- B. CLEARANCE CRITERIA**
- VERTICAL GROUND CLEARANCE
MIN. 138 kV CONDUCTOR 5.5 m
DESIGN 138kV CONDUCTOR 6.4 m

EPTCON LTD. ELECTRICAL POWER & TRANSMISSION CONSTRUCTION
560 SHELDON DRIVE, CAMBRIDGE, ONTARIO N1T 0A4
TEL: (519) 620-4414 FAX: (519) 620-4413

Chimax Inc.
Engineering Company
3900 Fourteenth Ave. East, Suite 506
Markham, On., L3R 0A9
Email: chimax@chimax.ca

CLIENT DWG. NO.

DRAWING NO. 1106-P201
REV. B

CADD FILE ADDRESS
1106-P201-B

APPROVED FOR CONSTRUCTION

CLIENT PROJECT MGR. DEPARTMENT MGR. PROJECT MGR.

PROJECT PHASE

PROJECT NO. ACTIVITY NO. PACKAGE CODE

SCALE

BY D/W/Y

DSN. E.KWONG 15/03/11
DRN. J.YIN 15/03/11

AREA MCLEAN MOUNTAIN WIND FARM

SUBJECT

115kV TRANSMISSION
OVERHEAD LINE
1CCT TANGENT (0°-2°) TRIANGULAR FRAMING

STAMP/SEAL

PROPRIETARY INFORMATION:
THIS DRAWING IS THE PROPERTY OF CHIMAX INC.
AND IS NOT TO BE LOANED OR REPRODUCED IN ANY WAY
WITHOUT THE PERMISSION OF CHIMAX INC.

REF NUMBER TITLE

REFERENCES

B 26/04/11 CONCEPTUAL ISSUED - FEASIBILITY STUDY

A 15/03/11 ISSUED FOR REVIEW

ISS D/W/Y APP ISSUED FOR

E.H. E.K.

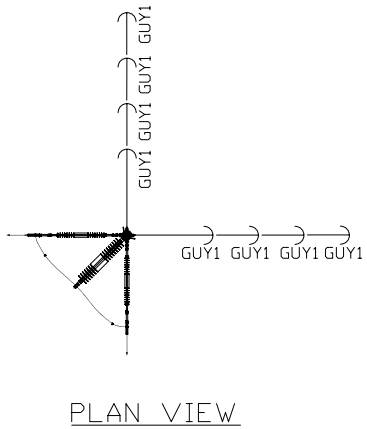
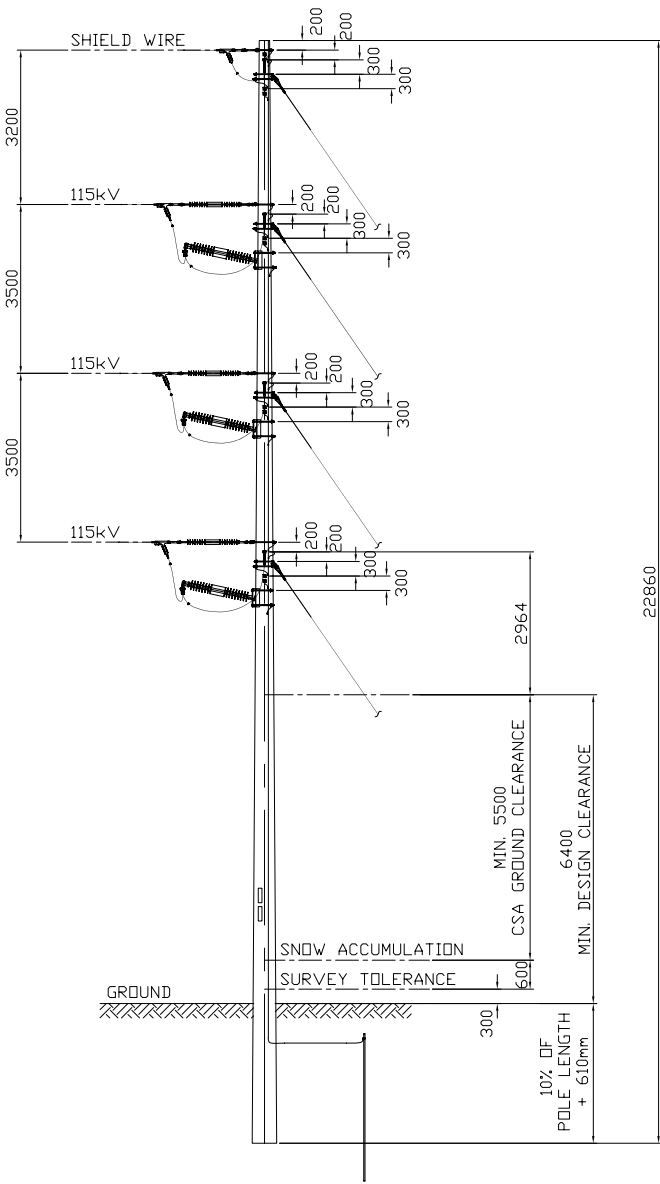
J.Y. E.K.

DR CHK APP APP APP APP

B 26/04/11 CONCEPTUAL ISSUED - FEASIBILITY STUDY

A 15/03/11 ISSUED FOR REVIEW

REV D/W/Y REVISION



DESIGN NOTES:

THE PROPOSED STRUCTURE FRAMING, POLE REQUIREMENT AND RECOMMENDATION STANDARD SPAN ARE BASED ON THE FOLLOWING DESIGN DATA:

- A. DESIGN CRITERIA**
 - MEAN ANNUAL SNOW ACCUMULATION: 0.6 m
 - ADDITIONAL SURVEY TOLERANCE: 0.3 m
 - MINIMUM DESIGN LOADING
 - CSA HEAVY CONDITION
 - HOURLY WIND: 400 Pa
 - RADIAL ICE THICKNESS: 12.7 mm (1/2")
 - CONDUCTOR TEMPERATION: -20°C
 - WIND LOADING:
 - HOURLY WIND (1/100): 480 Pa (~101 km/hr)
 - HOURLY WIND (1/50): 420 Pa (~94 km/hr)
 - HOURLY WIND (1/30): 370 Pa (~88 km/hr)
 - GUST WIND: 130 km/hr
 - ICE LOADING:
 - RADIAL ICE THICKNESS (STRUCTURAL): 25.4 mm (1")
 - RADIAL ICE THICKNESS (CLEARANCE): 12.7 mm (1/2")
- B. CLEARANCE CRITERIA**
 - VERTICAL GROUND CLEARANCE
 - MIN. 138 kV CONDUCTOR: 5.5 m
 - DESIGN 138kV CONDUCTOR: 6.4 m

115kV TRANSMISSION LINE
1CCT HEAVY ANGLE (60 – 90°) FRAMING
W-S115-90-WCOXX

EPTCON LTD. ELECTRICAL POWER & TRANSMISSION CONSTRUCTION
560 SHELDON DRIVE, CAMBRIDGE, ONTARIO N1T 0A4
TEL: (519) 620-4414 FAX: (519) 620-4413

Chimax Inc.
Engineering Company
3900 Fourteenth Ave. East, Suite 508
Markham, On., L3R 0A9
Email: chimax@chimax.ca

CLIENT DWG. NO.

DRAWING NO. 1106-P202
REV. B

CADD FILE ADDRESS
1106-P202-B

APPROVED FOR CONSTRUCTION

CLIENT PROJECT MGR. DEPARTMENT MGR. PROJECT MGR.
PROJECT PHASE

AREA MCLEAN MOUNTAIN WIND FARM

PROJECT NO. ACTIVITY NO. PACKAGE CODE

SUBJECT 115kV TRANSMISSION OVERHEAD LINE
1CCT HEAVY ANGLE (60°-90°) FRAMING

SCALE BY D/W/Y
DSN. E.KWONG 15/03/11
DRN. J.YIN 15/03/11

STAMP/SEAL

PROPRIETARY INFORMATION:
THIS DRAWING IS THE PROPERTY OF CHIMAX INC.
AND IS NOT TO BE LOANED OR REPRODUCED IN ANY WAY
WITHOUT THE PERMISSION OF CHIMAX INC.

REF NUMBER TITLE

REFERENCES

B 26/04/11 CONCEPTUAL ISSUED - FEASIBILITY STUDY
A 15/03/11 ISSUED FOR REVIEW

E.H. E.K.
J.Y. E.K.

DR CHK APP APP APP APP

B 26/04/11 CONCEPTUAL ISSUED - FEASIBILITY STUDY
A 15/03/11 ISSUED FOR REVIEW

REV D/M/Y

REVISION

9

8

7

6

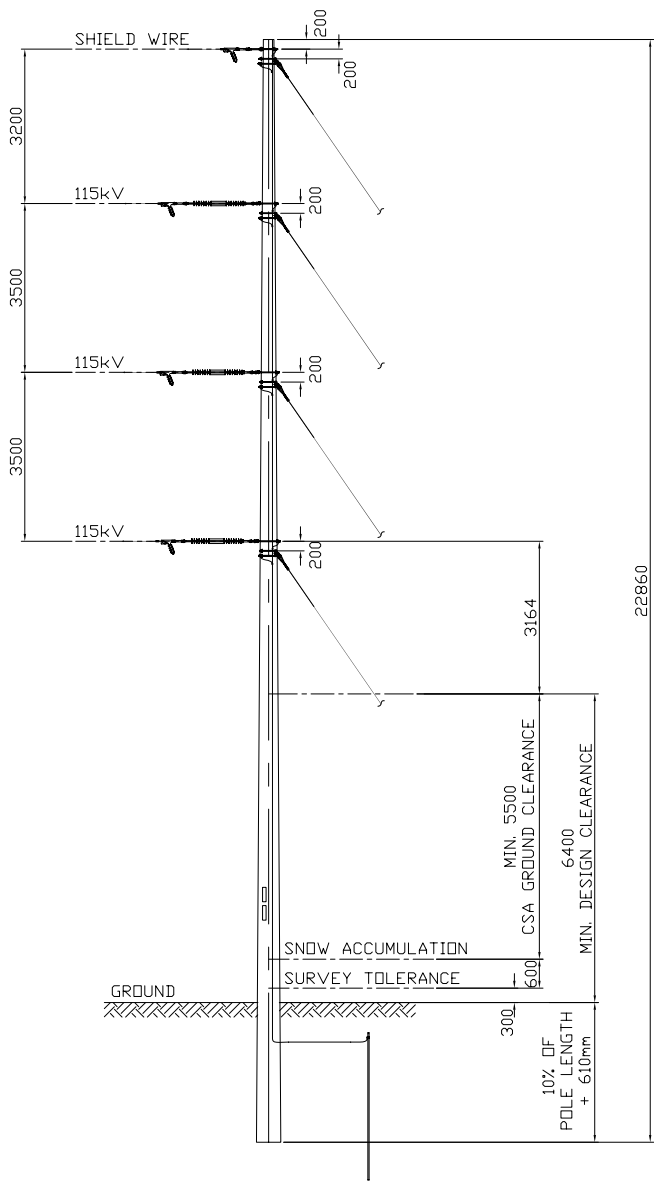
5

4

3

2

1



115kV TRANSMISSION LINE
1CCT DEADEND FRAMING
W-S115-DDEST-WCOXX

DESIGN NOTES:

THE PROPOSED STRUCTURE FRAMING, POLE REQUIREMENT AND RECOMMENDATION STANDARD SPAN ARE BASED ON THE FOLLOWING DESIGN DATA:


A. DESIGN CRITERIA

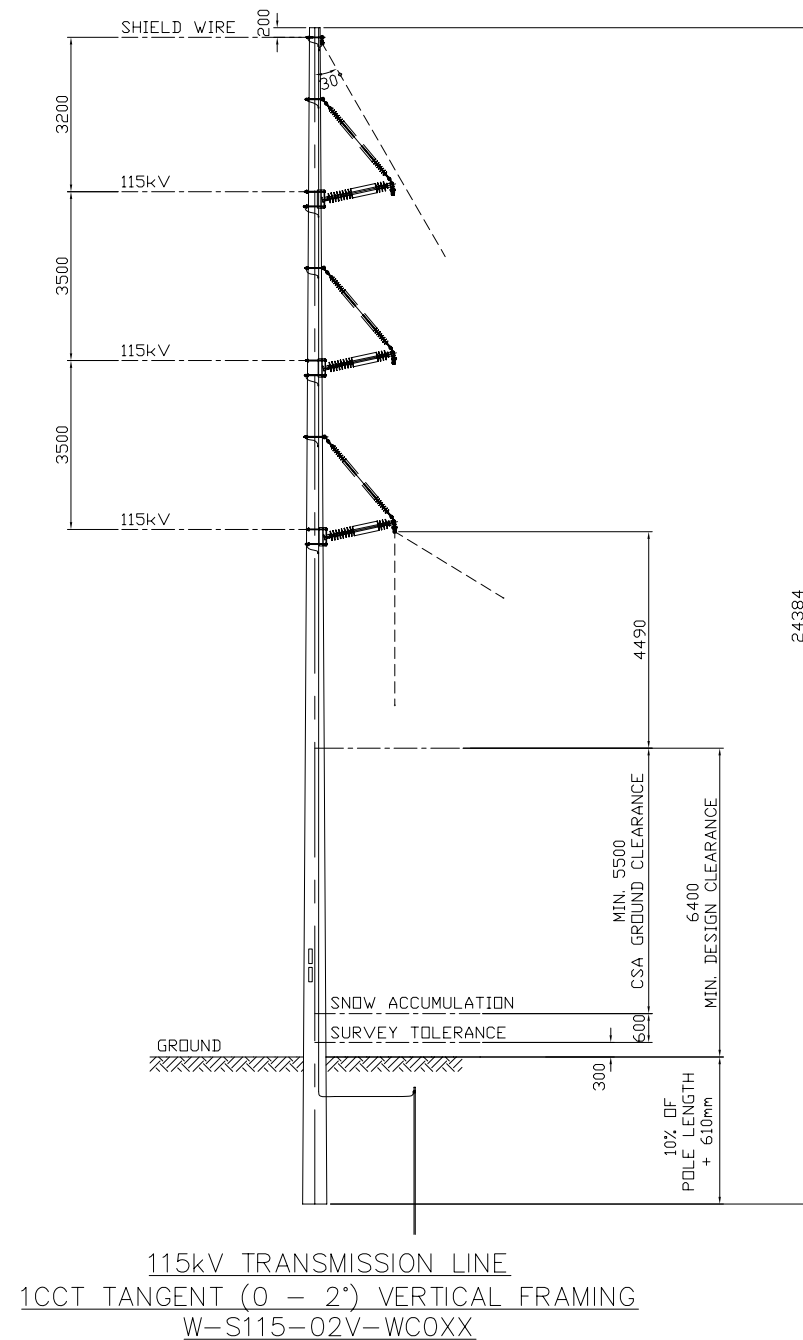
- | | |
|-----------------------------------|---------------------|
| 1. MEAN ANNUAL SNOW ACCUMULATION: | 0.6 m |
| 2. ADDITIONAL SURVEY TOLERANCE: | 0.3 m |
| 3. MINIMUM DESIGN LOADING | |
| CSA HEAVY CONDITION | |
| HOURLY WIND | 400 Pa |
| RADIAL ICE THICKNESS | 12.7 mm (1/2") |
| CONDUCTOR TEMPERATION | -20°C |
| 4. WIND LOADING: | |
| (i) HOURLY WIND (1/100) | 480 Pa (~101 km/hr) |
| (ii) HOURLY WIND (1/50) | 420 Pa (~94 km/hr) |
| (iii) HOURLY WIND (1/30) | 370 Pa (~88 km/hr) |
| (iv) GUST WIND | 130 km/hr |
| 5. ICE LOADING: | |
| RADIAL ICE THICKNESS (STRUCTURAL) | 25.4 mm (1") |
| RADIAL ICE THICKNESS (CLEARANCE) | 12.7 mm (1/2") |

B. CLEARANCE CRITERIA

- | | |
|------------------------------|-------|
| 1. VERTICAL GROUND CLEARANCE | |
| MIN. 138 kV CONDUCTOR | 5.5 m |
| DESIGN 138kV CONDUCTOR | 6.4 m |

[illegible]

<div>STAMP/SEAL</div> <div>PROPRIETARY INFORMATION: THIS DRAWING IS THE PROPERTY OF CHIMAX INC. AND IS NOT TO BE LOANED OR REPRODUCED IN ANY WAY WITHOUT THE PERMISSION OF CHIMAX INC.</div>	APPROVED FOR CONSTRUCTION				<div> Chimax Inc. Engineering Company 3950 Fourteenth Ave. East, Suite 506 Markham, On., L3R 0A9 Email: chimax@chimax.ca</div>		
	CLIENT PROJECT MGR. DEPARTMENT MGR. PROJECT MGR.						
	PROJECT PHASE				AREA	MCLEAN MOUNTAIN WIND FARM	
	PROJECT NO.	ACTIVITY NO.		PACKAGE CODE	SUBJECT 115kV TRANSMISSION OVERHEAD LINE 1CCT DEADEND FRAMING	CLIENT DWG. NO. DRAWING NO. 1106-P203	REV. B
	SCALE	BY		D/M/Y			
		DSN. E.KWONG	15/03/11				
	DRN. J.YIN	15/03/11					
CADD FILE ADDRESS 1106-P203-B							



DESIGN NOTES:


THE PROPOSED STRUCTURE FRAMING, POLE REQUIREMENT AND RECOMMENDATION
STANDARD SPAN ARE BASED ON THE FOLLOWING DESIGN DATA:

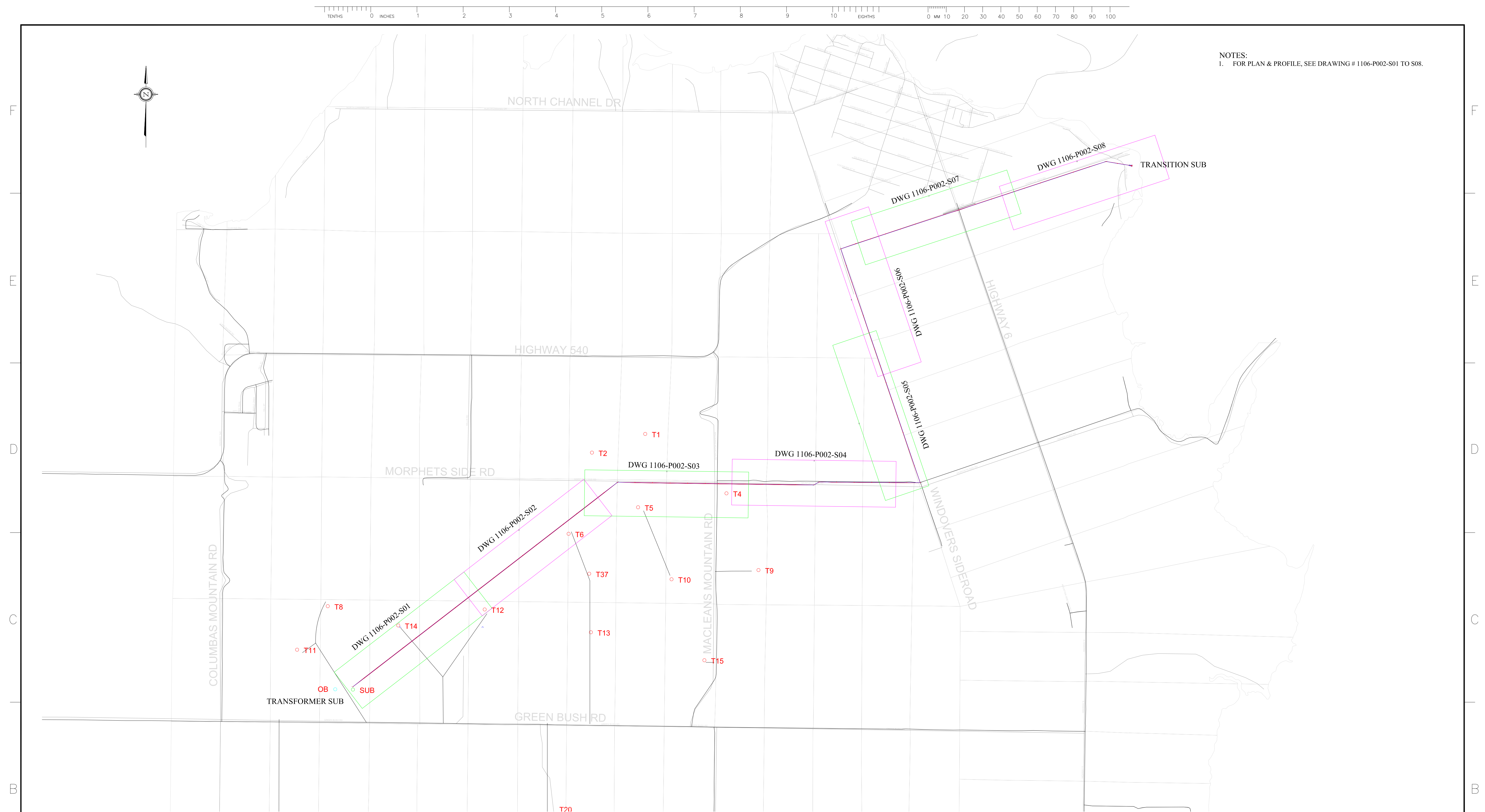
A. DESIGN CRITERIA

- | | |
|-----------------------------------|---------------------|
| 1. MEAN ANNUAL SNOW ACCUMULATION: | 0.6 m |
| 2. ADDITIONAL SURVEY TOLERANCE: | 0.3 |
| 3. MINIMUM DESIGN LOADING | |
| CSA HEAVY CONDITION | |
| HOURLY WIND | 400 Pa |
| RADIAL ICE THICKNESS | 12.7 mm (1/2") |
| CONDUCTOR TEMPERATION | -20°C |
| 4. WIND LOADING: | |
| (i) HOURLY WIND (1/100) | 480 Pa (~101 km/hr) |
| (ii) HOURLY WIND (1/50) | 420 Pa (~94 km/hr) |
| (iii) HOURLY WIND (1/30) | 370 Pa (~88 km/hr) |
| (iv) GUST WIND | 130 km/hr |
| 5. ICE LOADING: | |
| RADIAL ICE THICKNESS (STRUCTURAL) | 25.4 mm (1") |
| RADIAL ICE THICKNESS (CLEARANCE) | 12.7 mm (1/2") |

B. CLEARANCE CRITERIA

- | | |
|------------------------------|-------|
| 1. VERTICAL GROUND CLEARANCE | |
| MIN. 138 kV CONDUCTOR | 5.5 m |
| DESIGN 138kV CONDUCTOR | 6.4 m |

ETPCON LTD. <div> ELECTRICAL POWER & TRANSMISSION CONSTRUCTION </div>	
560 SHELTON DRIVE, CAMBRIDGE, ONTARIO N1T 0A4 TEL: (519) 620-4414 FAX: (519) 620-4413	
 <div> Chimax Inc. Engineering Company 3950 Fourteenth Ave. East, Suite 506 Markham, On. L3R 0A9 Email: chimax@chimax.ca </div>	
CLIENT DWG. NO.	
DRAWING NO.	REV.
1106-P204	B
CADD FILE ADDRESS 1106-P204-B	

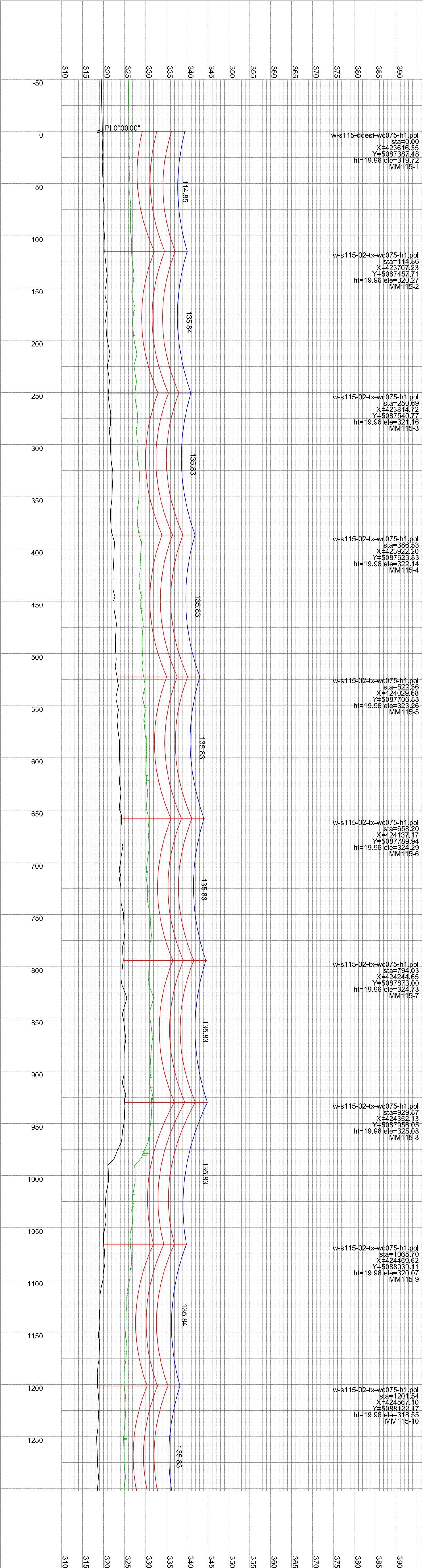
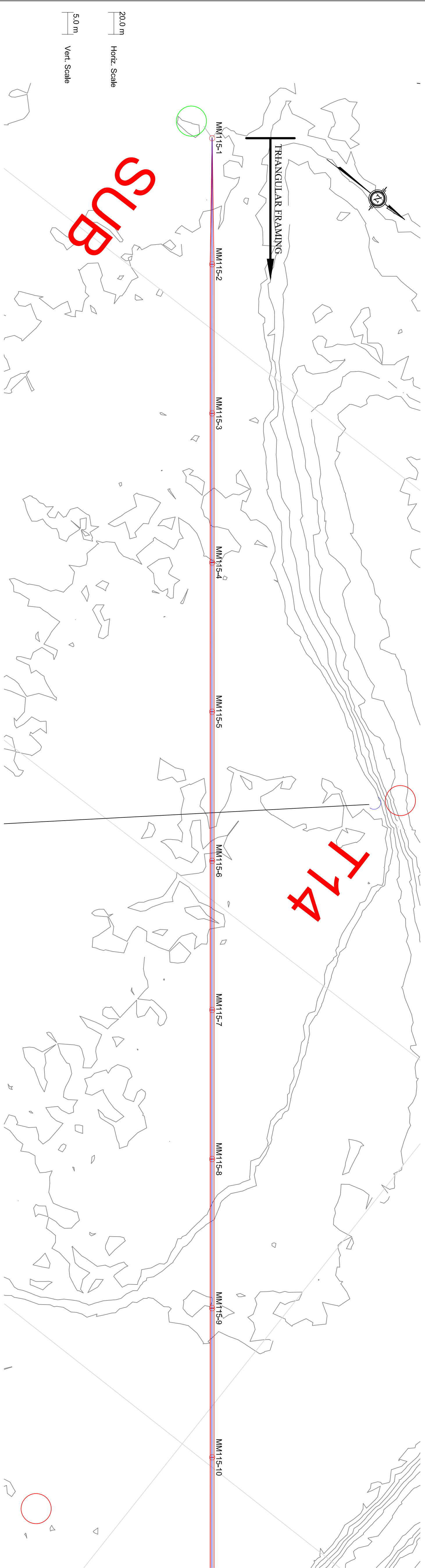


NOTES:
1. FOR PLAN & PROFILE, SEE DRAWING # 1106-P002-S01 TO S08.

[illegible]



PLS-CADD Drawing



PLAN & PROFILE LEGEND:

115KV CONDUCTOR (795 MCM ACSR DRAKE)

UNLESS NOTED OTHERWISE)

ORGW (AC-64-538)

CLEARANCE LINE

STRUCTURE DESCRIPTION LEGEND:

w-s115-02-bx-wc075-h1 xxx.pol

PLS-POLE FILE IDENTIFICATION

xxx (SITE SPECIFIC VARIATION)

STATION CHARGE

UTM EASTING

UTM NORTHING

STRUCTURE HEIGHT ABOVE GROUND (M)

GROUND ELEVATION (M)

STRUCTURE NUMBER

NOTES:

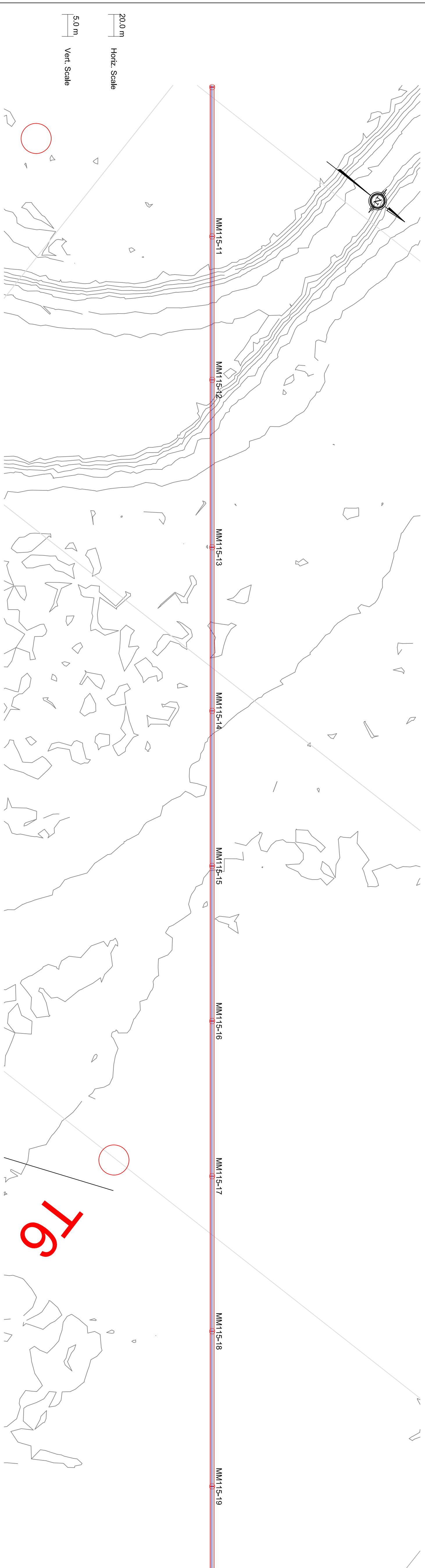
1. CLEARANCE LINE SHOWN AT 6.4 M (FOR VEHICULAR TRAFFIC).

2. CONDUCTOR (795 MCM ACSR DRAKE) SAG AT 100°C.




3. OPEN SAG AT 40°C.

APPROVED FOR CONSTRUCTION															
CLIENT PROJECT MGR.				DEPARTMENT MGR.				PROJECT MGR.							
PROJECT PHASE				AREA				MCEAN MOUNTAIN WIND FARM							
PROJECT NO.		ACTIVITY NO.		PACKAGE CODE		SUBJECT						CLIENT DWG. NO.			
SCALE		BY		D/M/Y		115KV TRANSMISSION OVERHEAD LINE PLAN & PROFILE DRAININGS SHEET 1						DRAWING NO.			
NTS		DSN. E.MONG DRN. M.HUANG		26/04/11								1106-P002-S01			
												REV.			
												A			

A		B		C		D		E		F		G		H		I		J		K		L		M		N		O		P		Q		R		S		T		U		V		W		X		Y		Z		AA		AB		AC		AD		AE		AF		AG		AH		AI		AJ		AK		AL		AM		AN		AO		AP		AQ		AR		AS		AT		AU		AV		AW		AX		AY		AZ		BA		BB		BC		BD		BE		BF		BG		BH		BI		BJ		BK		BL		BM		BN		BO		BP		BQ		BR		BS		BT		BU		BV		BW		BX		BY		BZ		CA		CB		CC		CD		CE		CF		CG		CH		CI		CJ		CK		CL		CM		CN		CO		CP		CQ		CR		CS		CT		CU		CV		CW		CX		CY		CZ		DA		DB		DC		DD		DE		DF		DG		DH		DI		DJ		DK		DL		DM		DN		DO		DP		DQ		DR		DS		DT		DU		DV		DW		DX		DY		DZ		EA		EB		EC		ED		EE		EF		EG		EH		EI		EJ		EK		EL		EM		EN		EO		EP		EQ		ER		ES		ET		EU		EV		EW		EX		EY		EZ		FA		FB		FC		FD		FE		FF		FG		FH		FI		FJ		FK		FL		FM		FN		FO		FP		FQ		FR		FS		FT		FU		FV		FW		FX		FY		FZ		GA		GB		GC		GD		GE		GF		GG		GH		GI		GJ		GK		GL		GM		GN		GO		GP		GQ		GR		GS		GT		GU		GV		GW		GX		GY		GZ		HA		HB		HC		HD		HE		HF		HG		HH		HI		HJ		HK		HL		HM		HN		HO		HP		HQ		HR		HS		HT		HU		HV		HW		HX		HY		HZ		IA		IB		IC		ID		IE		IF		IG		IH		II		IJ		IK		IL		IM		IN		IO		IP		IQ		IR		IS		IT		IU		IV		IW		IX		IY		IZ		JA		JB		JC		JD		JE		JF		JG		JH		JI		JJ		JK		JL		JM		JN		JO		JP		JQ		JR		JS		JT		JU		JV		JW		JX		JY		JZ		KA		KB		KC		KD		KE		KF		KG		KH		KI		KJ		KK		KL		KM		KN		KO		KP		KQ		KR		KS		KT		KU		KV		KW		KX		KY		KZ		LA		LB		LC		LD		LE		LF		LG		LH		LI		LJ		LK		LM		LN		LO		LP		LQ		LR		LS		LT		LU		LV		LW		LX		LY		LZ		MA		MB		MC		MD		ME		MF		MG		MH		MI		MJ		MK		ML		MN		MO		MP		MQ		MR		MS		MT		MU		MV		MW		MX		MY		MZ		NA		NB		NC		ND		NE		NF		NG		NH		NI		NJ		NK		NL		NM		NO		NP		NQ		NR		NS		NT		NU		NV		NW		NX		NY		NZ		OA		OB		OC		OD		OE		OF		OG		OH		OI		OJ		OK		OL		OM		ON		OO		OP		OQ		OR		OS		OT		OU		OV		OW		OX		OY		OZ		PA		PB		PC		PD		PE		PF		PG		PH		PI		PJ		PK		PL		PM		PN		PO		PP		PQ		PR		PS		PT		PU		PV		PW		PX		PY		PZ		QA		QB		QC		QD		QE		QF		QG		QH		QI		QJ		QK		QL		QM		QN		QO		QP		QQ		QR		QS		QT		QU		QV		QW		QX		QY		QZ		RA		RB		RC		RD		RE		RF		RG		RH		RI		RJ		RK		RL		RM		RN		RO		RP		RQ		RR		RS		RT		RU		RV		RW		RX		RY		RZ		SA		SB		SC		SD		SE		SF		SG		SH		SI		SJ		SK		SL		SM		SN		SO		SP		SQ		SR		SS		ST		SU		SV		SW		SX		SY		SZ		TA		TB		TC		TD		TE		TF		TG		TH		TI		TJ		TK		TL		TM		TN		TO		TP		TQ		TR		TS		TT		TU		TV		TW		TX		TY		TZ		UA		UB		UC		UD		UE		UF		UG		UH		UI		UJ		UK		UL		UM		UN		UO		UP		UQ		UR		US		UT		UU		UV		UW		UX		UY		UZ		VA		VB		VC		VD		VE		VF		VG		VH		VI		VJ		VK		VL		VM		VN		VO		VP		VQ		VR		VS		VT		VU		VV		VW		VX		VY		VZ		WA		WB		WC		WD		WE		WF		WG		WH		WI		WJ		WK		WL		WM		WN		WO		WP		WQ		WR		WS		WT		WU		WV		WW		WX		WY		WZ		XA		XB		XC		XD		XE		XF		XG		XH		XI		XJ		XK		XL		XM		XN		XO		XP		XQ		XR		XS		XT		XU		XV		XW		XX		XY		XZ		YA		YB		YC		YD		YE		YF		YG		YH		YI		YJ		YK		YL		YM		YN		YO		YP		YQ		YR		YS		YT		YU		YV		YW		YX		YZ		ZA		ZB		ZC		ZD		ZE		ZF		ZG		ZH		ZI		ZJ		ZK		ZL		ZM		ZN		ZO		ZP		ZQ		ZR		ZS		ZT		ZU		ZV		ZW		ZX		ZY		ZZ	
---	--	---	--	---	--	---	--	---	--	---	--	---	--	---	--	---	--	---	--	---	--	---	--	---	--	---	--	---	--	---	--	---	--	---	--	---	--	---	--	---	--	---	--	---	--	---	--	---	--	---	--	----	--	----	--	----	--	----	--	----	--	----	--	----	--	----	--	----	--	----	--	----	--	----	--	----	--	----	--	----	--	----	--	----	--	----	--	----	--	----	--	----	--	----	--	----	--	----	--	----	--	----	--	----	--	----	--	----	--	----	--	----	--	----	--	----	--	----	--	----	--	----	--	----	--	----	--	----	--	----	--	----	--	----	--	----	--	----	--	----	--	----	--	----	--	----	--	----	--	----	--	----	--	----	--	----	--	----	--	----	--	----	--	----	--	----	--	----	--	----	--	----	--	----	--	----	--	----	--	----	--	----	--	----	--	----	--	----	--	----	--	----	--	----	--	----	--	----	--	----	--	----	--	----	--	----	--	----	--	----	--	----	--	----	--	----	--	----	--	----	--	----	--	----	--	----	--	----	--	----	--	----	--	----	--	----	--	----	--	----	--	----	--	----	--	----	--	----	--	----	--	----	--	----	--	----	--	----	--	----	--	----	--	----	--	----	--	----	--	----	--	----	--	----	--	----	--	----	--	----	--	----	--	----	--	----	--	----	--	----	--	----	--	----	--	----	--	----	--	----	--	----	--	----	--	----	--	----	--	----	--	----	--	----	--	----	--	----	--	----	--	----	--	----	--	----	--	----	--	----	--	----	--	----	--	----	--	----	--	----	--	----	--	----	--	----	--	----	--	----	--	----	--	----	--	----	--	----	--	----	--	----	--	----	--	----	--	----	--	----	--	----	--	----	--	----	--	----	--	----	--	----	--	----	--	----	--	----	--	----	--	----	--	----	--	----	--	----	--	----	--	----	--	----	--	----	--	----	--	----	--	----	--	----	--	----	--	----	--	----	--	----	--	----	--	----	--	----	--	----	--	----	--	----	--	----	--	----	--	----	--	----	--	----	--	----	--	----	--	----	--	----	--	----	--	----	--	----	--	----	--	----	--	----	--	----	--	----	--	----	--	----	--	----	--	----	--	----	--	----	--	----	--	----	--	----	--	----	--	----	--	----	--	----	--	----	--	----	--	----	--	----	--	----	--	----	--	----	--	----	--	----	--	----	--	----	--	----	--	----	--	----	--	----	--	----	--	----	--	----	--	----	--	----	--	----	--	----	--	----	--	----	--	----	--	----	--	----	--	----	--	----	--	----	--	----	--	----	--	----	--	----	--	----	--	----	--	----	--	----	--	----	--	----	--	----	--	----	--	----	--	----	--	----	--	----	--	----	--	----	--	----	--	----	--	----	--	----	--	----	--	----	--	----	--	----	--	----	--	----	--	----	--	----	--	----	--	----	--	----	--	----	--	----	--	----	--	----	--	----	--	----	--	----	--	----	--	----	--	----	--	----	--	----	--	----	--	----	--	----	--	----	--	----	--	----	--	----	--	----	--	----	--	----	--	----	--	----	--	----	--	----	--	----	--	----	--	----	--	----	--	----	--	----	--	----	--	----	--	----	--	----	--	----	--	----	--	----	--	----	--	----	--	----	--	----	--	----	--	----	--	----	--	----	--	----	--	----	--	----	--	----	--	----	--	----	--	----	--	----	--	----	--	----	--	----	--	----	--	----	--	----	--	----	--	----	--	----	--	----	--	----	--	----	--	----	--	----	--	----	--	----	--	----	--	----	--	----	--	----	--	----	--	----	--	----	--	----	--	----	--	----	--	----	--	----	--	----	--	----	--	----	--	----	--	----	--	----	--	----	--	----	--	----	--	----	--	----	--	----	--	----	--	----	--	----	--	----	--	----	--	----	--	----	--	----	--	----	--	----	--	----	--	----	--	----	--	----	--	----	--	----	--	----	--	----	--	----	--	----	--	----	--	----	--	----	--	----	--	----	--	----	--	----	--	----	--	----	--	----	--	----	--	----	--	----	--	----	--	----	--	----	--	----	--	----	--	----	--	----	--	----	--	----	--	----	--	----	--	----	--	----	--	----	--	----	--	----	--	----	--	----	--	----	--	----	--	----	--	----	--	----	--	----	--	----	--	----	--	----	--	----	--	----	--	----	--	----	--	----	--	----	--	----	--	----	--	----	--	----	--	----	--	----	--	----	--	----	--	----	--	----	--	----	--	----	--	----	--	----	--	----	--	----	--	----	--	----	--	----	--	----	--	----	--	----	--	----	--	----	--	----	--	----	--	----	--	----	--	----	--	----	--	----	--	----	--	----	--	----	--	----	--	----	--	----	--	----	--	----	--	----	--	----	--	----	--	----	--	----	--	----	--	----	--	----	--	----	--	----	--	----	--	----	--	----	--	----	--	----	--	----	--	----	--	----	--	----	--	----	--	----	--	----	--	----	--	----	--	----	--	----	--	----	--	----	--	----	--	----	--	----	--	----	--	----	--	----	--	----	--	----	--	----	--	----	--	----	--	----	--	----	--	----	--	----	--	----	--	----	--	----	--	----	--	----	--	----	--	----	--	----	--	----	--	----	--	----	--	----	--	----	--	----	--	----	--	----	--	----	--	----	--	----	--	----	--	----	--	----	--	----	--	----	--	----	--	----	--	----	--	----	--	----	--	----	--	----	--	----	--	----	--	----	--	----	--	----	--	----	--	----	--	----	--	----	--	----	--	----	--	----	--	----	--	----	--	----	--	----	--	----	--	----	--	----	--	----	--	----	--	----	--	----	--	----	--	----	--	----	--	----	--	----	--	----	--	----	--	----	--	----	--	----	--	----	--	----	--	----	--	----	--	----	--	----	--	----	--	----	--	----	--	----	--	----	--	----	--	----	--	----	--	----	--	----	--	----	--	----	--	----	--	----	--	----	--	----	--	----	--	----	--	----	--	----	--	----	--	----	--	----	--	----	--	----	--	----	--	----	--	----	--	----	--	----	--	----	--	----	--	----	--	----	--	----	--	----	--	----	--	----	--	----	--	----	--	----	--	----	--	----	--	----	--	----	--	----	--	----	--	----	--	----	--	----	--	----	--	----	--	----	--	----	--	----	--	----	--	----	--	----	--	----	--	----	--	----	--	----	--	----	--	----	--	----	--	----	--	----	--	----	--	----	--	----	--	----	--	----	--	----	--	----	--

[illegible]

PLAN & PROFILE LEGEND:

	115KV CONDUCTOR (795 MCM ACSR DRAKE)
	UNLESS NOTED OTHERWISE)
	0.90W' (AC-64-428)
	CLEARANCE LINE

STRUCTURE DESCRIPTION LEGEND:	PL-5 HOLE FILE IDENTIFICATION
w-s115-02-10-20-W075-01 xxx.pcd	xxx (SITE SPECIFIC VARIATION)
SHA	STATION CHAINAGE
X	UTM NORTHING
Y	STRUCTURE HEIGHT ABOVE GROUND (M)
ht	GROUND ELEVATION (M)
ele	STRUCTURE NUMBER
MM/11-5-1	

NOTES:

1. CLEARANCE LINE SHOWN AT 6.4 M (FOR VEHICULAR TRAFFIC)
2. CONDUCTOR (795 MCM ACSR DRAKE) SAG AT 100°C.
3. OPGW SAG AT 40°C.

[illegible]

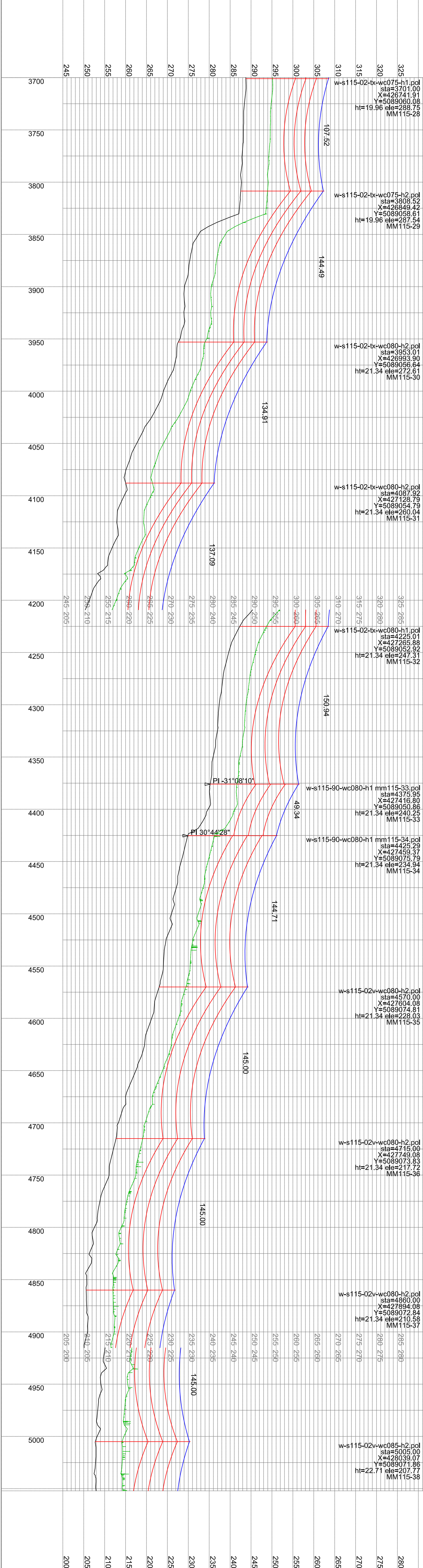
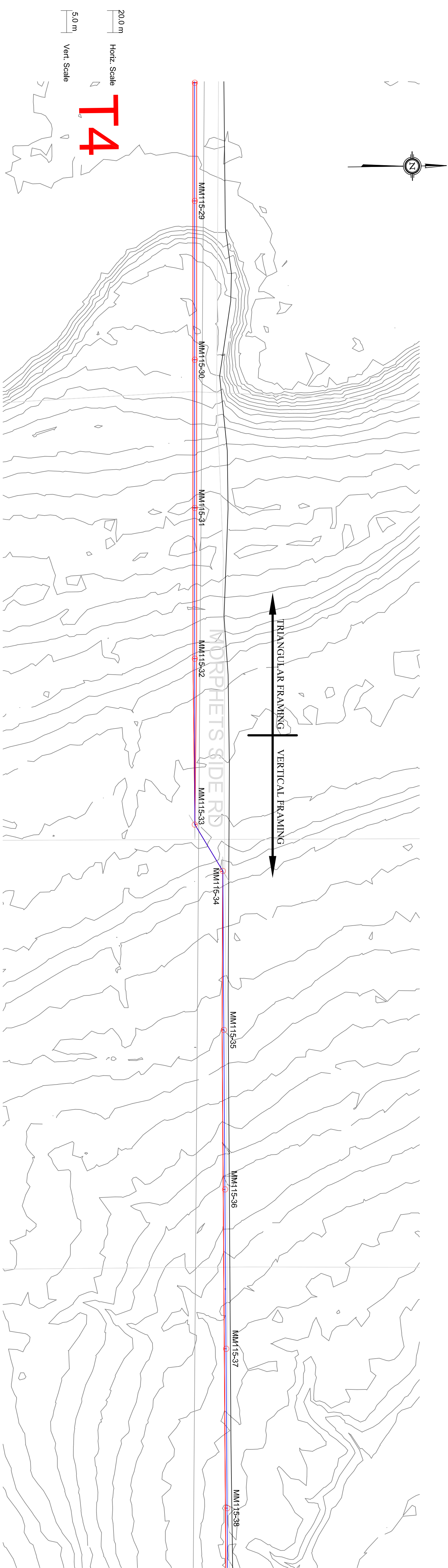
PLS-CADD Drawing

EPTCON LTD. ELECTRICAL POWER &
TRANSMISSION CONSTRUCTION

560 SHELTON DRIVE, CAMBRIDGE, ONTARIO N1T 0A4
TEL: (519) 620-4414 FAX: (519) 620-4413

Chimax Inc.
Engineering Company
3950 Fourteenth Ave. East, Suite 506
Marathon, On., L3R 0A9
Email: chimax@chimax.ca

DRAWING NO. 1106-P002-S02
REV. A



PLAN & PROFILE LEGEND:

115KV CONDUCTOR (795 MCM ACSR DRAKE)
UNLESS NOTED OTHERWISE
CLEARANCE LINE

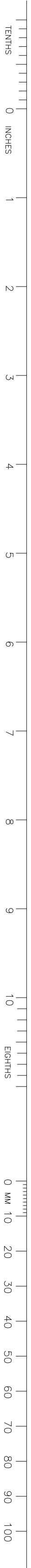
STRUCTURE DESCRIPTION LEGEND:

PLS-POLE FILE IDENTIFICATION
xxx (SITE SPECIFIC VARIATION)
STATION CHANG
UTM EASTING
UTM NORTHING
STRUCTURE HEIGHT ABOVE GROUND (M)
GROUND ELEVATION (M)
STRUCTURE NUMBER

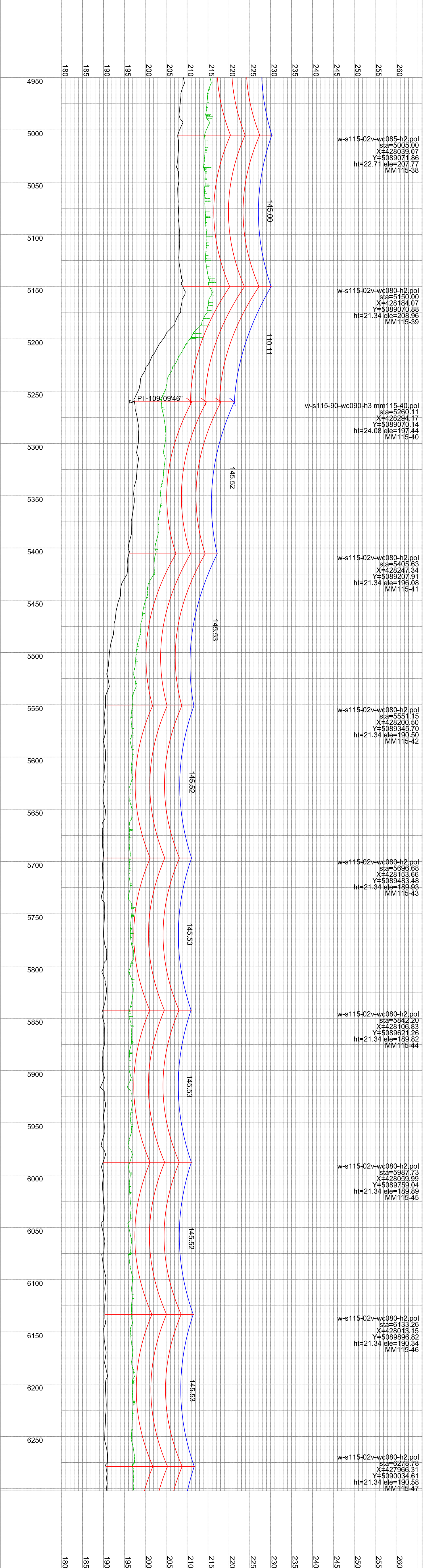
NOTES:

1. CLEARANCE LINE SHOWN AT 6.4 M (FOR VEHICULAR TRAFFIC),
CONDUCTOR (795 MCM ACSR DRAKE) SAG AT 100°C,
OPEN SAG AT 40°C.

APPROVED FOR CONSTRUCTION																			
CLIENT PROJECT MGR.		DEPARTMENT MGR.		PROJECT MGR.		AREA		MCCLEAN MOUNTAIN WIND FARM		CLIENT DWG. NO.		REV.							
PROJECT PHASE																			
PROJECT NO.		ACTIVITY NO.		PACKAGE CODE		SUBJECT													
SCALE		BY		D/M/Y		115KV TRANSMISSION OVERHEAD LINE PLAN & PROFILE DRAWINGS SHEET 4													
NTS		DSN, E.M.WONG DRN, M.YUWONG		26/04/11															
PROPERTY INFORMATION: OF CHINA INC. AND IS NOT TO BE LOANED OR REPRODUCED IN ANY WAY WITHOUT THE PERMISSION OF CHINA INC.																			
STAMP/SEAL																			
A										A									
26/04/11										26/04/11									
CONCEPTUAL ISSUED - FEASIBILITY STUDY										CONCEPTUAL ISSUED - FEASIBILITY STUDY									
ISSUED FOR										ISSUED FOR									
REF. NUMBER										1106-P001									
REFERENCES										TITLE									



PLS-CADD Drawing



PLAN & PROFILE LEGEND:


- 115KV CONDUCTOR (795 MCM ACSR DRAKE)
- UNLESS NOTED OTHERWISE)
- OPENW (AC-64-538)
- CLEARANCE LINE

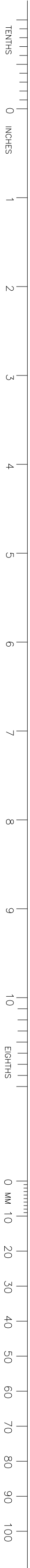
STRUCTURE DESCRIPTION LEGEND:

- W-s115-02-w-wc075-h1 xxx.pol
- STA
- X
- Y
- ht
- etc
- MM115-1

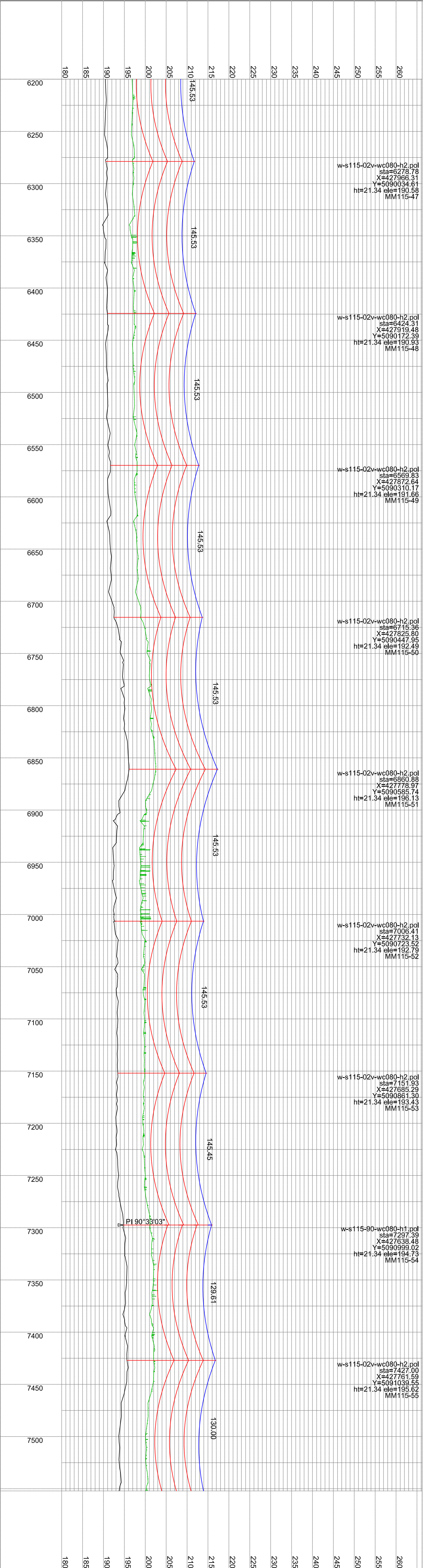
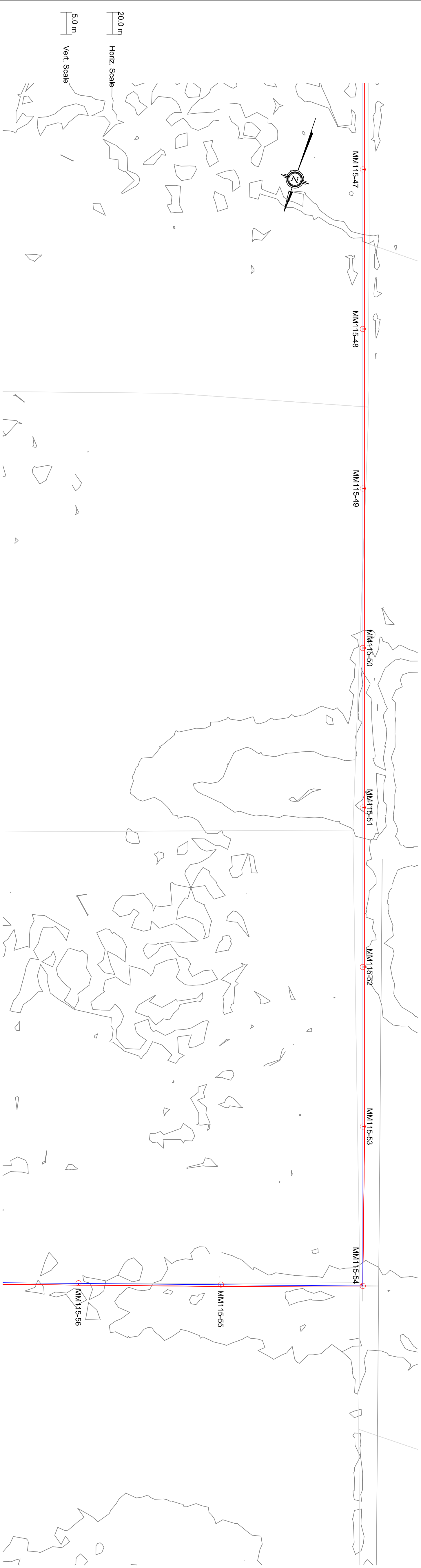
NOTES:

- CLEARANCE LINE SHOWN AT 6.4 M (FOR VEHICULAR TRAFFIC).
- CONDUCTOR (795 MCM ACSR DRAKE) SAG AT 100°C.
- OPENW SAG AT 40°C.

APPROVED FOR CONSTRUCTION										<div>Chimax Inc. Engineering Company 3600 Fourteenth Street, Suite 506 Markham, Ontario L3R 0V4 Email: chimax@chimax.ca</div>															
CLIENT PROJECT MGR.					DEPARTMENT MGR.															PROJECT MGR.					
PROJECT PHASE					AREA															MCCLEAN MOUNTAIN WIND FARM					
PROJECT NO.			ACTIVITY NO.			PACKAGE CODE			SUBJECT			CLIENT DWG. NO.													
									115KV TRANSMISSION OVERHEAD LINE PLAN & PROFILE DRAWINGS SHEET 5			1106-P002-S05													
SCALE			BY			D/M/Y						REV.													
NTS			DSN. E.WONG			26/04/11						A													
			DRL. M.WUONG			26/04/11																			
STAMP/SEAL																									
PROPERTY INFORMATION: THIS DRAWING IS THE PROPERTY OF CHIMAX INC. IT IS NOT TO BE REPRODUCED IN ANY WAY WITHOUT THE PERMISSION OF CHIMAX INC.																									
A													A												
26/04/11													26/04/11												
CONCEPTUAL ISSUED - FEASIBILITY STUDY													CONCEPTUAL ISSUED - FEASIBILITY STUDY												
REVISION													REF												
E.V. D/M/Y													NUMBER												
M.H. E.K.													TITLE												
APP. APP.																									



PLS-CADD Drawing



PLAN & PROFILE LEGEND:

115KV CONDUCTOR (795 MCM ACSR DRAKE)

UNLESS NOTED OTHERWISE)

ORGW (AC-64-538)

CLEARANCE LINE

STRUCTURE DESCRIPTION LEGEND:

PLS-POLE FILE IDENTIFICATION

xxx (SITE SPECIFIC VARIATION)

STATION CHG

UTM EASTING

UTM NORTHING

STRUCTURE HEIGHT ABOVE GROUND (M)

GROUND ELEVATION (M)

STRUCTURE NUMBER

NOTES:

1. CLEARANCE LINE SHOWN AT 6.4 M (FOR VEHICULAR TRAFFIC).

2. CONDUCTOR (795 MCM ACSR DRAKE) SAG AT 100°C.

3. OPEN SAG AT 40°C.

EPTICON LTD. ELECTRICAL POWER & TRANSMISSION CONSTRUCTION

360 SHELDON DRIVE, CAMDEN, ONTARIO N7M 0A4

TEL: (819) 820-4444 FAX: (819) 820-4415

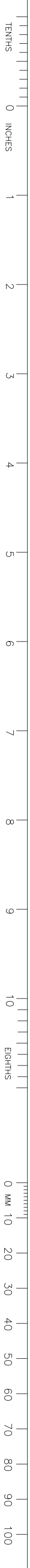
Chimax Inc. CHIMAX TRANSMISSION COMPANY

360 SHELDON DRIVE, CAMDEN, ONTARIO N7M 0A4

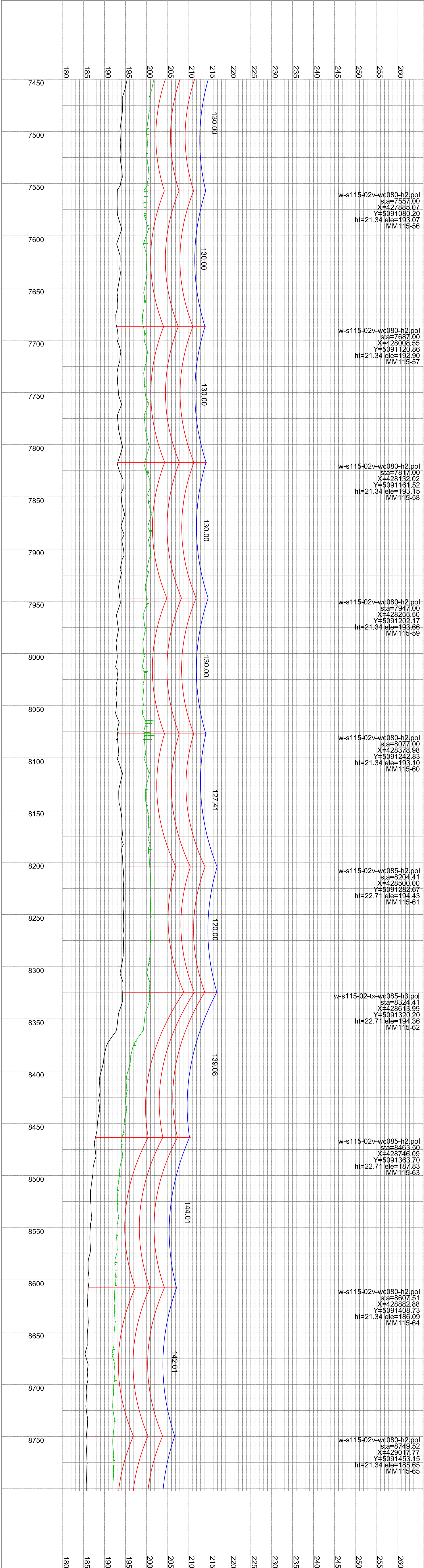
TEL: (819) 820-4444 FAX: (819) 820-4415

Email: chimax@chimax.ca

APPROVED FOR CONSTRUCTION																													
CLIENT PROJECT MGR.					DEPARTMENT MGR.					PROJECT MGR.																			
PROJECT PHASE										AREA																			
										MCLEAN MOUNTAIN WIND FARM																			
PROJECT NO.										ACTIVITY NO.					PACKAGE CODE					SUBJECT									
																				115KV TRANSMISSION OVERHEAD LINE PLAN & PROFILE DRAININGS SHEET 6									
SCALE										BY					D/M/Y					DRAWING NO.									
NTS										DSN. E.MONG DRN. M.HUANG					26/04/11					1106-P002_S06									
																				REV. A									



PLS-CADD Drawing



PLAN & PROFILE LEGEND:

115KV CONDUCTOR (795 MCM ACSR DRAKE)

UNLESS NOTED OTHERWISE)

OPENW (AC-64-538)

CLEARANCE LINE

STRUCTURE DESCRIPTION LEGEND:

W-s115-02-bx-wc085-h1 xxx.pol

STA

X

Y

ht

etc

MM115-1

NOTES:

1. CLEARANCE LINE SHOWN AT 6.4 M (FOR VEHICULAR TRAFFIC).

2. CONDUCTOR (795 MCM ACSR DRAKE) SAG AT 100°C.

3. OPENW SAG AT 40°C.

EPTICON LTD.

ELECTRICAL, POWER & TRANSMISSION CONSTRUCTION

360 SHELDON DRIVE, CAMDEN, ONTARIO N7M 0A4

TEL: (905) 626-4444 FAX: (905) 626-4415

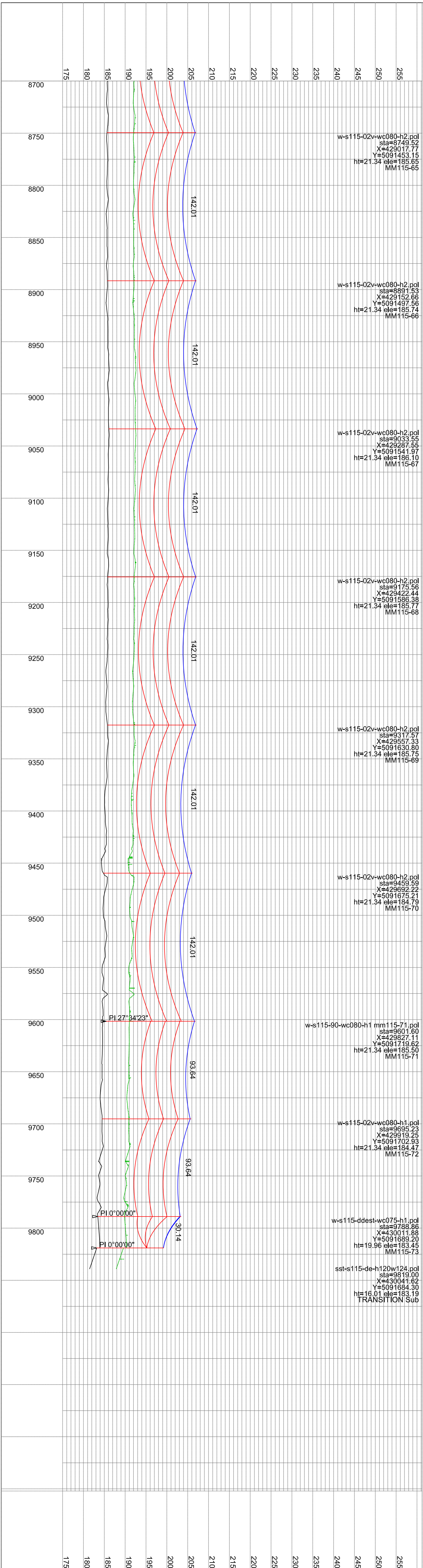
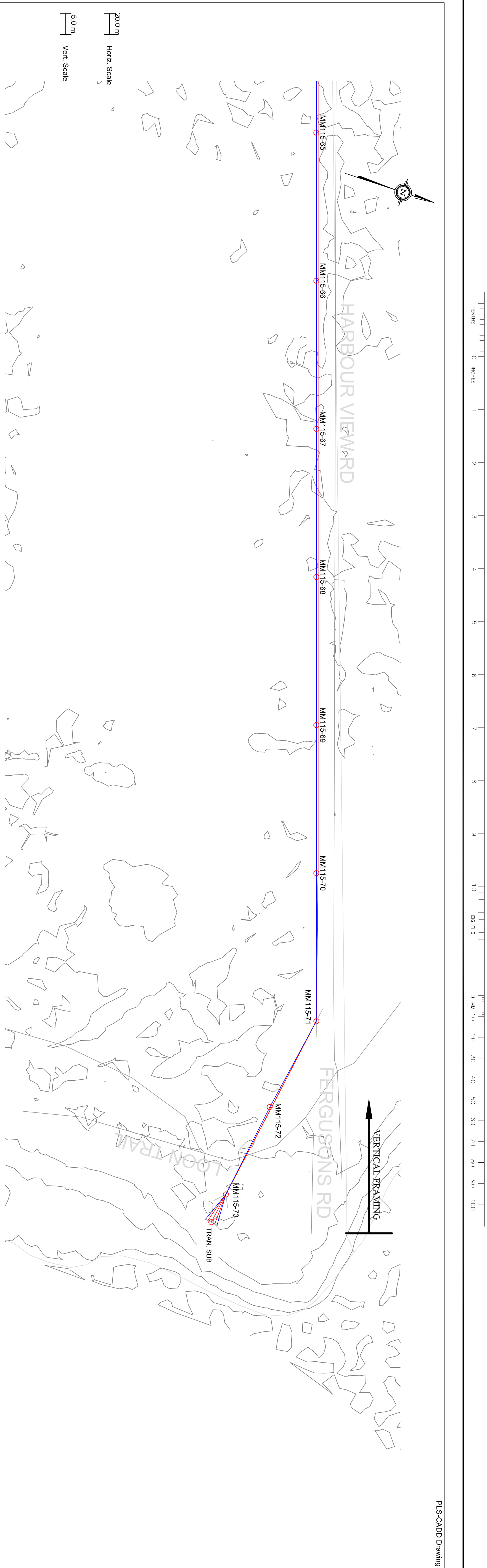
Chimax Inc.

360 SHELDON DRIVE, CAMDEN, ONTARIO N7M 0A4

TEL: (905) 626-4444 FAX: (905) 626-4415

Email: chimax@chimax.ca

APPROVED FOR CONSTRUCTION																							
CLIENT PROJECT MGR.				DEPARTMENT MGR.				PROJECT MGR.															
PROJECT PHASE				AREA				MCLEAN MOUNTAIN WIND FARM															
PROJECT NO.				ACTIVITY NO.				PACKAGE CODE				SUBJECT				CLIENT DWG. NO.							
SCALE				BY				D/M/Y				115KV TRANSMISSION OVERHEAD LINE PLAN & PROFILE DRAWINGS SHEET 7				DRAWING NO. 1106-P002-S07				REV. A			
NTS				DSN. E.M.WONG DRN. M.MUJONG				26/04/11 26/04/11															
STAMP/SEAL												PROPERTY/INFORMATION/PROPERTY OF CHIMAX INC. AND IS NOT TO BE LOANED OR REPRODUCED IN ANY WAY WITHOUT THE PERMISSION OF CHIMAX INC.											
A				26/04/11				CONCEPTUAL ISSUED - FEASIBILITY STUDY				REF. NUMBER				115KV TRANSMISSION OVERHEAD LINE SITE PLAN							
A				26/04/11				CONCEPTUAL ISSUED - FEASIBILITY STUDY				REF. NUMBER				115KV TRANSMISSION OVERHEAD LINE SITE PLAN							
A				26/04/11				CONCEPTUAL ISSUED - FEASIBILITY STUDY				REF. NUMBER				115KV TRANSMISSION OVERHEAD LINE SITE PLAN							
A				26/04/11				CONCEPTUAL ISSUED - FEASIBILITY STUDY				REF. NUMBER				115KV TRANSMISSION OVERHEAD LINE SITE PLAN							
A				26/04/11				CONCEPTUAL ISSUED - FEASIBILITY STUDY				REF. NUMBER				115KV TRANSMISSION OVERHEAD LINE SITE PLAN							
A				26/04/11				CONCEPTUAL ISSUED - FEASIBILITY STUDY				REF. NUMBER				115KV TRANSMISSION OVERHEAD LINE SITE PLAN							
A				26/04/11				CONCEPTUAL ISSUED - FEASIBILITY STUDY				REF. NUMBER				115KV TRANSMISSION OVERHEAD LINE SITE PLAN							
A				26/04/11				CONCEPTUAL ISSUED - FEASIBILITY STUDY				REF. NUMBER				115KV TRANSMISSION OVERHEAD LINE SITE PLAN							
A				26/04/11				CONCEPTUAL ISSUED - FEASIBILITY STUDY				REF. NUMBER				115KV TRANSMISSION OVERHEAD LINE SITE PLAN							
A				26/04/11				CONCEPTUAL ISSUED - FEASIBILITY STUDY				REF. NUMBER				115KV TRANSMISSION OVERHEAD LINE SITE PLAN							
A				26/04/11				CONCEPTUAL ISSUED - FEASIBILITY STUDY				REF. NUMBER				115KV TRANSMISSION OVERHEAD LINE SITE PLAN							
A				26/04/11				CONCEPTUAL ISSUED - FEASIBILITY STUDY				REF. NUMBER				115KV TRANSMISSION OVERHEAD LINE SITE PLAN							
A				26/04/11				CONCEPTUAL ISSUED - FEASIBILITY STUDY				REF. NUMBER				115KV TRANSMISSION OVERHEAD LINE SITE PLAN							
A				26/04/11				CONCEPTUAL ISSUED - FEASIBILITY STUDY				REF. NUMBER				115KV TRANSMISSION OVERHEAD LINE SITE PLAN							
A				26/04/11				CONCEPTUAL ISSUED - FEASIBILITY STUDY				REF. NUMBER				115KV TRANSMISSION OVERHEAD LINE SITE PLAN							
A				26/04/11				CONCEPTUAL ISSUED - FEASIBILITY STUDY				REF. NUMBER				115KV TRANSMISSION OVERHEAD LINE SITE PLAN							
A				26/04/11				CONCEPTUAL ISSUED - FEASIBILITY STUDY				REF. NUMBER				115KV TRANSMISSION OVERHEAD LINE SITE PLAN							
A				26/04/11				CONCEPTUAL ISSUED - FEASIBILITY STUDY				REF. NUMBER				115KV TRANSMISSION OVERHEAD LINE SITE PLAN							
A				26/04/11				CONCEPTUAL ISSUED - FEASIBILITY STUDY				REF. NUMBER				115KV TRANSMISSION OVERHEAD LINE SITE PLAN							
A				26/04/11				CONCEPTUAL ISSUED - FEASIBILITY STUDY				REF. NUMBER				115KV TRANSMISSION OVERHEAD LINE SITE PLAN							
A				26/04/11				CONCEPTUAL ISSUED - FEASIBILITY STUDY				REF. NUMBER				115KV TRANSMISSION OVERHEAD LINE SITE PLAN							
A				26/04/11				CONCEPTUAL ISSUED - FEASIBILITY STUDY				REF. NUMBER				115KV TRANSMISSION OVERHEAD LINE SITE PLAN							
A				26/04/11				CONCEPTUAL ISSUED - FEASIBILITY STUDY				REF. NUMBER				115KV TRANSMISSION OVERHEAD LINE SITE PLAN							
A				26/04/11				CONCEPTUAL ISSUED - FEASIBILITY STUDY				REF. NUMBER				115KV TRANSMISSION OVERHEAD LINE SITE PLAN							
A				26/04/11				CONCEPTUAL ISSUED - FEASIBILITY STUDY				REF. NUMBER				115KV TRANSMISSION OVERHEAD LINE SITE PLAN							
A				26/04/11				CONCEPTUAL ISSUED - FEASIBILITY STUDY				REF. NUMBER				115KV TRANSMISSION OVERHEAD LINE SITE PLAN							
A				26/04/11				CONCEPTUAL ISSUED - FEASIBILITY STUDY				REF. NUMBER				115KV TRANSMISSION OVERHEAD LINE SITE PLAN							
A				26/04/11				CONCEPTUAL ISSUED - FEASIBILITY STUDY				REF. NUMBER				115KV TRANSMISSION OVERHEAD LINE SITE PLAN							
A				26/04/11				CONCEPTUAL ISSUED - FEASIBILITY STUDY				REF. NUMBER				115KV TRANSMISSION OVERHEAD LINE SITE PLAN							
A				26/04/11				CONCEPTUAL ISSUED - FEASIBILITY STUDY				REF. NUMBER				115KV TRANSMISSION OVERHEAD LINE SITE PLAN							
A				26/04/11				CONCEPTUAL ISSUED - FEASIBILITY STUDY				REF. NUMBER				115KV TRANSMISSION OVERHEAD LINE SITE PLAN							
A				26/04/11				CONCEPTUAL ISSUED - FEASIBILITY STUDY				REF. NUMBER				115KV TRANSMISSION OVERHEAD LINE SITE PLAN							
A				26/04/11				CONCEPTUAL ISSUED - FEASIBILITY STUDY				REF. NUMBER				115KV TRANSMISSION OVERHEAD LINE SITE PLAN							
A				26/04/11				CONCEPTUAL ISSUED - FEASIBILITY STUDY				REF. NUMBER				115KV TRANSMISSION OVERHEAD LINE SITE PLAN							
A				26/04/11				CONCEPTUAL ISSUED - FEASIBILITY STUDY				REF. NUMBER				115KV TRANSMISSION OVERHEAD LINE SITE PLAN							
A				26/04/11				CONCEPTUAL ISSUED - FEASIBILITY STUDY				REF. NUMBER				115KV TRANSMISSION OVERHEAD LINE SITE PLAN							
A				26/04/11				CONCEPTUAL ISSUED - FEASIBILITY STUDY				REF. NUMBER				115KV TRANSMISSION OVERHEAD LINE SITE PLAN							
A				26/04/11				CONCEPTUAL ISSUED - FEASIBILITY STUDY				REF. NUMBER				115KV TRANSMISSION OVERHEAD LINE SITE PLAN							
A				26/04/11				CONCEPTUAL ISSUED - FEASIBILITY STUDY				REF. NUMBER				115KV TRANSMISSION OVERHEAD LINE SITE PLAN							
A				26/04/11				CONCEPTUAL ISSUED - FEASIBILITY STUDY				REF. NUMBER				115KV TRANSMISSION OVERHEAD LINE SITE PLAN							
A				26/04/11				CONCEPTUAL ISSUED - FEASIBILITY STUDY				REF. NUMBER				115KV TRANSMISSION OVERHEAD LINE SITE PLAN							
A				26/04/11				CONCEPTUAL ISSUED - FEASIBILITY STUDY				REF. NUMBER				115KV TRANSMISSION OVERHEAD LINE SITE PLAN							
A				26/04/11				CONCEPTUAL ISSUED - FEASIBILITY STUDY				REF. NUMBER				115KV TRANSMISSION OVERHEAD LINE SITE PLAN							
A				26/04/11				CONCEPTUAL ISSUED - FEASIBILITY STUDY				REF. NUMBER				115KV TRANSMISSION OVERHEAD LINE SITE PLAN							
A				26/04/11				CONCEPTUAL ISSUED - FEASIBILITY STUDY				REF. NUMBER				115KV TRANSMISSION OVERHEAD LINE SITE PLAN							
A				26/04/11				CONCEPTUAL ISSUED - FEASIBILITY STUDY				REF. NUMBER				115KV TRANSMISSION OVERHEAD LINE SITE PLAN							
A				26/04/11				CONCEPTUAL ISSUED - FEASIBILITY STUDY				REF. NUMBER				115KV TRANSMISSION OVERHEAD LINE SITE PLAN							
A				26/04/11				CONCEPTUAL ISSUED - FEASIBILITY STUDY				REF. NUMBER				115KV TRANSMISSION OVERHEAD LINE SITE PLAN							
A				26/04/11				CONCEPTUAL ISSUED - FEASIBILITY STUDY				REF. NUMBER				115KV TRANSMISSION OVERHEAD LINE SITE PLAN							
A				26/04/11				CONCEPTUAL ISSUED - FEASIBILITY STUDY				REF. NUMBER				115KV TRANSMISSION OVERHEAD LINE SITE PLAN							
A				26/04/11				CONCEPTUAL ISSUED - FEASIBILITY STUDY				REF. NUMBER				115KV TRANSMISSION OVERHEAD LINE SITE PLAN							
A				26/04/11				CONCEPTUAL ISSUED - FEASIBILITY STUDY				REF. NUMBER				115KV TRANSMISSION OVERHEAD LINE SITE PLAN							
A				26/04/11				CONCEPTUAL ISSUED - FEASIBILITY STUDY				REF. NUMBER				115KV TRANSMISSION OVERHEAD LINE SITE PLAN							
A				26/04/11				CONCEPTUAL ISSUED - FEASIBILITY STUDY				REF. NUMBER				115KV TRANSMISSION OVERHEAD LINE SITE PLAN							
A				26/04/11				CONCEPTUAL ISSUED - FEASIBILITY STUDY				REF. NUMBER				115KV TRANSMISSION OVERHEAD LINE SITE PLAN							
A				26/04/11				CONCEPTUAL ISSUED - FEASIBILITY STUDY				REF. NUMBER				115KV TRANSMISSION OVERHEAD LINE SITE PLAN							
A				26/04/1																			



PLAN & PROFILE LEGEND:	
—	115KV CONDUCTOR / 095 MCM ACSR DRAKE
—	UTLINES NOTED OTHERWISE)
- - -	ORGW (A-C+4+25)
—	CLEARANCE LINE
STRUCTURE DESCRIPTION LEGEND:	
w-11.5-02-A8-w6075.5h	PL-SPOLE FILE IDENTIFICATION XXX (SITE SPECIFIC VARIATION)
	STATION CHAINAGE
	UTLINS NORTHING
	STRUCTURE HEIGHT ABOVE GROUND (M)
	GROUND ELEVATION (M)
	STRUCTURE NUMBER

NOTES:

1. CLEARANCE LINE SHOWN AT 6.4 M (FOR VEHICULAR TRAFFIC)
2. CONDUCTOR (795 MCM ACSR DRAKE) SAG AT 100°C.
3. OPGW SAG AT 40°C.

[illegible]

EPTCON LTD. ELECTRICAL POWER &
TRANSMISSION CONSTRUCTION

560 SHELTON DRIVE, CAMBRIDGE, ONTARIO N1T 0A4
TEL: (519) 620-4414 FAX: (519) 620-4413

Chimax Inc.
Engineering Company
3960 Fourteenth Ave. East, Suite 506
Marathon, On. L3R 0A9
Email: chimax@chimax.ca

DRAWING NO.	REV.
1106-P002-S08	A

CADD FILE ADDRESS
1106-P002-S08-A
