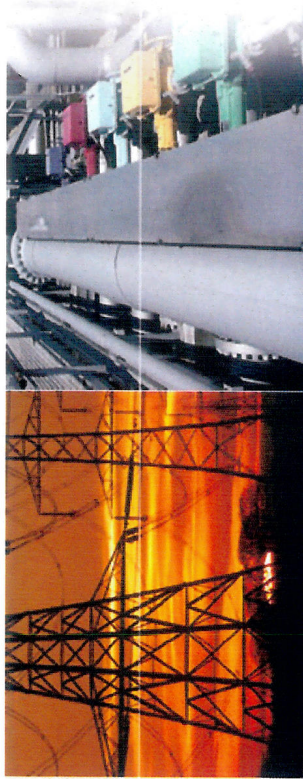


Ontario Energy Board 3RD Generation Incentive Regulation Model

Kingston Hydro Corporation - EB-2011-0178

If applicable, please enter any adjustments related to the revenue to cost ratio model into columns H and K. The Price Escalator has been set at the 2011 values and will be updated by Board staff. The Stretch Factor Value will also be updated by Board staff.

Price Escalator	2.00%	Productivity Factor	0.72%	Price Cap Index	0.88%				
Choose Stretch Factor Group	II	Associated Stretch Factor Value		0.4%					
Rate Description		Unit	Current MFC	MFC Adjustment from R/C Model	Current Volumetric Charge	DVR Adjustment from R/C Model	Price Cap Index	Proposed MFC	Proposed Volumetric Charge
Residential									
General Service Less Than 50 kW		\$	12.06		0.01480		0.880%	12.17	0.01493
General Service 50 to 4,999 kW		\$	24.83		0.01030		0.880%	25.05	0.01039
Large Use		\$	269.01		1.92700		0.880%	271.38	1.94396
Unmetered Scattered Load		\$	4,959.68		1.01180		0.880%	5,003.33	1.02070
Street Lighting		\$	11.09		0.01350		0.880%	11.19	0.01362
Standby Power - APPROVED ON AN INTERIM BASIS		\$	0.99		4.49010		0.880%	1.00	4.52961
		\$					0.880%		



Ontario Energy Board
3RD Generation Incentive
Regulation Model

Kingston Hydro Corporation - EB-2011-0178

Please enter the descriptions of the current Loss Factors from your most recent Board-Approved Tariff of Rates and Charges by using the drop-down menu in the column labeled "Loss Factors". If the description is not found in the drop-down menu, please enter the description in the green cells under the correct classes.

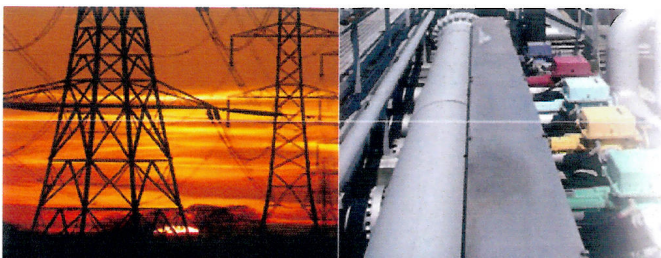
Are you adding

Loss Factors

Current

Total Loss Factor – Secondary Metered Customer < 5,000 kW
Total Loss Factor – Secondary Metered Customer > 5,000 kW
Total Loss Factor – Primary Metered Customer < 5,000 kW
Total Loss Factor – Primary Metered Customer > 5,000 kW

1.0344
1.0180
1.0241
1.0078



Ontario Energy Board

3RD Generation Incentive Regulation Model

Kingston Hydro Corporation - EB-2011-0178

The standard Allowance rates have been included as default entries. If you have different rates, please make the appropriate corrections in the below. As well, please enter the current Specific Service Charges below. The standard Retail Service Charges have been entered below. If you rates, please make the appropriate corrections in columns B, D or E as applicable (cells are unlocked).

UNIT CURRENT

ALLOWANCES

Transformer Allowance for Ownership - per kW of billing demand/month

\$/kW (0.60)

Primary Metering Allowance for transformer losses – applied to measured demand and energy

% (1.00)

SPECIFIC SERVICE CHARGES

APPLICATION

The application of these rates and charges shall be in accordance with the Licence of the Distributor and any Code or Order of the Board, and amendments thereto as approved by the Board, which may be applicable to the administration of this schedule

No charges to meet the costs of any work or service done or furnished for the purpose of the distribution of electricity shall be made except as permitted by this schedule, unless required by the Distributor's Licence or a Code or Order of the Board, and amendments thereto as approved by the Board, or as specified herein.

It should be noted that this schedule does not list any charges, assessments, or credits that are required by law to be invoiced by a distributor and that are not subject to Board approval, such as the Debt Retirement Charge, charges for the Ministry of Energy Conservation and Renewable Energy Program, the Global Adjustment, the Ontario Clean Energy Benefit and the HST.

Customer Administration

Arrears certificate

\$ 15.00

Statement of account

\$ 15.00

Request for other billing information

\$ 15.00

Account history

\$ 15.00

Returned cheque charge (plus bank charges)

\$ 15.00

Legal letter charge

\$ 15.00

Account set up charge/change of occupancy charge (plus credit agency costs if applicable)

\$ 15.00

Special meter reads

\$ 30.00

Meter dispute charge plus Measurement Canada fees (if meter found correct)

\$ 30.00

Non-Payment of Account

Late Payment - per month	%	1.50
Late Payment - per annum	%	19.56
Disconnect/Reconnect at meter - during regular hours	\$	65.00
Disconnect/Reconnect at meter - after regular hours	\$	185.00
Disconnect/Reconnect at pole - during regular hours	\$	185.00
Disconnect/Reconnect at pole - after regular hours	\$	415.00

Other

Install/Remove load control device - during regular hours	\$	65.00
Install/Remove load control device - after regular hours	\$	185.00
Specific Charge for Access to the Power Poles \$/pole/year	\$	22.35
Layout fees	\$	200.00

RETAIL SERVICE CHARGES (if applicable)

The application of these rates and charges shall be in accordance with the Licence of the Distributor and any Code or Order of the Board, and amendments thereto as approved by the Board, which may be applicable to the administration of this schedule.

No rates and charges for the distribution of electricity and charges to meet the costs of any work or service done or furnished for the purpose of the distribution of electricity shall be made except as permitted by this schedule, unless required by the Distributor's Licence or a Code or Order of the Board, and amendments thereto as approved by the Board, or as specified herein.

Unless specifically noted, this schedule does not contain any charges for the electricity commodity, be it under the Regulated Price Plan, a contract with a retailer or the wholesale market price, as applicable

It should be noted that this schedule does not list any charges, assessments, or credits that are required by law to be invoiced by a distributor and that are not subject to Board approval, such as the Debt Retirement Charge, charges for the Ministry of Energy Conservation and Renewable Energy Program, the Global Adjustment, the Ontario Clean Energy Benefit and the HST.

Retail Service Charges refer to services provided by a distributor to retailers or customers related to the supply of competitive electricity

One-time charge, per retailer, to establish the service agreement between the distributor and the retailer	\$	100.00
Monthly Fixed Charge, per retailer	\$	20.00
Monthly Variable Charge, per customer, per retailer	\$/cust.	0.50
Distributor-consolidated billing charge, per customer, per retailer	\$/cust.	0.30
Retailer-consolidated billing credit, per customer, per retailer	\$/cust.	(0.30)
Service Transaction Requests (STR)		
Request fee, per request, applied to the requesting party	\$	0.25
Processing fee, per request, applied to the requesting party	\$	0.50
Request for customer information as outlined in Section 10.6.3 and Chapter 11 of the Retail Settlement Code directly to retailers and customers, if not delivered electronically through the Electronic Business Transaction (EBT) system, applied to the requesting party		
Up to twice a year	\$	no charge
More than twice a year, per request (plus incremental delivery costs)	\$	2.00

Kingston Hydro Corporation

TARIFF OF RATES AND CHARGES

Effective Date May 1, 2012

Implementation Date May 1, 2012

This schedule supersedes and replaces all previously approved schedules of Rates, Charges and

EB-2011-0178

RESIDENTIAL SERVICE CLASSIFICATION

APPLICATION

MONTHLY RATES AND CHARGES – Delivery Component

Service Charge	\$	12.17
Distribution Volumetric Rate	\$/kWh	0.0149
Low Voltage Service Rate - Effective Until	\$/kWh	0.0007
Rate Rider for Global Adjustment Sub-Account (2011) – Applicable only for	\$/kWh	0.0013
Rate Rider for Deferral/Variance Account Disposition (2011) - Effective Until	\$/kWh	0.0011
Rate Rider for Lost Revenue Adjustment Mechanism (LRAM) Recovery (2011)	\$/kWh	0.0003
Rate Rider for Tax Change (2012) - Effective Until April 30, 2013	\$/kWh	-0.0001
Rate Rider for Incremental Capital (2012) - Effective Until April 30, 2015	\$/kWh	0.0007
Rate Rider for Deferral/Variance Account Disposition (2012)	\$/kWh	-0.0016
Retail Transmission Rate – Network Service Rate	\$/kWh	0.0063
Retail Transmission Rate – Line and Transformation Connection Service	\$/kWh	0.0051

MONTHLY RATES AND CHARGES – Regulatory Component

Wholesale Market Service Rate	\$/kWh	0.0052
Rural Rate Protection Charge	\$/kWh	0.0011
Standard Supply Service – Administrative Charge (if applicable)	\$	0.25

Kingston Hydro Corporation

TARIFF OF RATES AND CHARGES

Effective Date May 1, 2012

Implementation Date May 1, 2012

This schedule supersedes and replaces all previously approved schedules of Rates, Charges and

EB-2011-0178

GENERAL SERVICE LESS THAN 50 KW SERVICE

APPLICATION

MONTHLY RATES AND CHARGES - Delivery Component

Service Charge	\$	25.05
Distribution Volumetric Rate	\$/kWh	0.0104
Low Voltage Service Rate - Effective Until	\$/kWh	0.0006
Rate Rider for Global Adjustment Sub-Account (2011) – Applicable only for	\$/kWh	0.0013
Rate Rider for Deferral/Variance Account Disposition (2011) - Effective Until	\$/kWh	0.0004
Rate Rider for Lost Revenue Adjustment Mechanism (LRAM) Recovery (if applicable)	\$/kWh	0.0003
Rate Rider for Tax Change (2012) - Effective Until April 30, 2013	\$/kWh	-0.0001
Rate Rider for Incremental Capital (2012) - Effective Until April 30, 2015	\$/kWh	0.0005
Rate Rider for Deferral/Variance Account Disposition (2012)	\$/kWh	-0.001
Retail Transmission Rate – Network Service Rate	\$/kWh	0.0057
Retail Transmission Rate – Line and Transformation Connection Service	\$/kWh	0.0047

MONTHLY RATES AND CHARGES – Regulatory Component

Wholesale Market Service Rate	\$/kWh	0.0052
Rural Rate Protection Charge	\$/kWh	0.0011
Standard Supply Service – Administrative Charge (if applicable)	\$	0.25

Kingston Hydro Corporation

TARIFF OF RATES AND CHARGES

Effective Date May 1, 2012

Implementation Date May 1, 2012

This schedule supersedes and replaces all previously approved schedules of Rates, Charges and

EB-2011-0178

GENERAL SERVICE 50 TO 4,999 KW SERVICE CLASSIFICATION

APPLICATION

MONTHLY RATES AND CHARGES - Delivery Component

Service Charge	\$	271.38
Distribution Volumetric Rate	\$/kW	1.944
Low Voltage Service Rate - Effective Until	\$/kW	0.252
Rate Rider for Global Adjustment Sub-Account (2011) – Applicable only for	\$/kW	0.4946
Rate Rider for Deferral/Variance Account Disposition (2011) - Effective Until	\$/kW	-0.0021
Rate Rider for Lost Revenue Adjustment Mechanism (LRAM) Recovery (if applicable)	\$/kW	0.121
Rate Rider for Tax Change (2012) - Effective Until April 30, 2013	\$/kW	-0.0106
Rate Rider for Incremental Capital (2012) - Effective Until April 30, 2015	\$/kW	0.0776
Rate Rider for Deferral/Variance Account Disposition (2012)	\$/kW	-0.1571
Retail Transmission Rate – Network Service Rate	\$/kW	2.5033
Retail Transmission Rate – Line and Transformation Connection Service	\$/kW	2.0307

MONTHLY RATES AND CHARGES – Regulatory Component

Wholesale Market Service Rate	\$/kWh	0.0052
Rural Rate Protection Charge	\$/kWh	0.0011
Standard Supply Service – Administrative Charge (if applicable)	\$	0.25