

500 Consumers Road
North York, Ontario
M2J 1P8
PO Box 650
Scarborough ON M1K 5E3

Shari Lynn Spratt
Supervisor Regulatory Proceedings
phone: (416) 495-5499
fax: (416) 495-6072
Email: EGDRegulatoryProceedings@enbridge.com



VIA RESS, EMAIL and COURIER

August 13, 2012

Ms. Kirsten Walli
Board Secretary
Ontario Energy Board
2300 Yonge Street, 27th Floor
Toronto, Ontario M4P 1E4

Dear Ms. Walli:

**Re: Enbridge Gas Distribution Inc. ("Enbridge") – Expropriation Plans
Application for Authority to Expropriate Certain Land
Ontario Energy Board ("Board") File Number: EB-2011-0391**

In accordance with the Board's Decision and Order dated June 14, 2012, attached please find Enbridge's registered expropriation plans for certain land within the City of Welland.

Please contact the undersigned if you have any questions.

Sincerely,

[original signed]

Shari Lynn Spratt
Supervisor Regulatory Proceedings

Attachment

cc: Mr. Scott Stoll, Aird & Berlis LLP
EB-2011-0391 Intervenor and Affected Landowners

CERTIFICATE OF APPROVAL

The ONTARIO ENERGY BOARD hereby certifies that approval was given to ENBRIDGE GAS DISTRIBUTION INC. on the 14th day of August 2012 to expropriate the lands shown designated as Part 1 on this plan.

E. L. L. W.
Vicki Wall
Secretary of the Board, The Ontario Energy Board
Dated at Toronto this 3rd day of August 2012

EXPROPRIATION CERTIFICATE

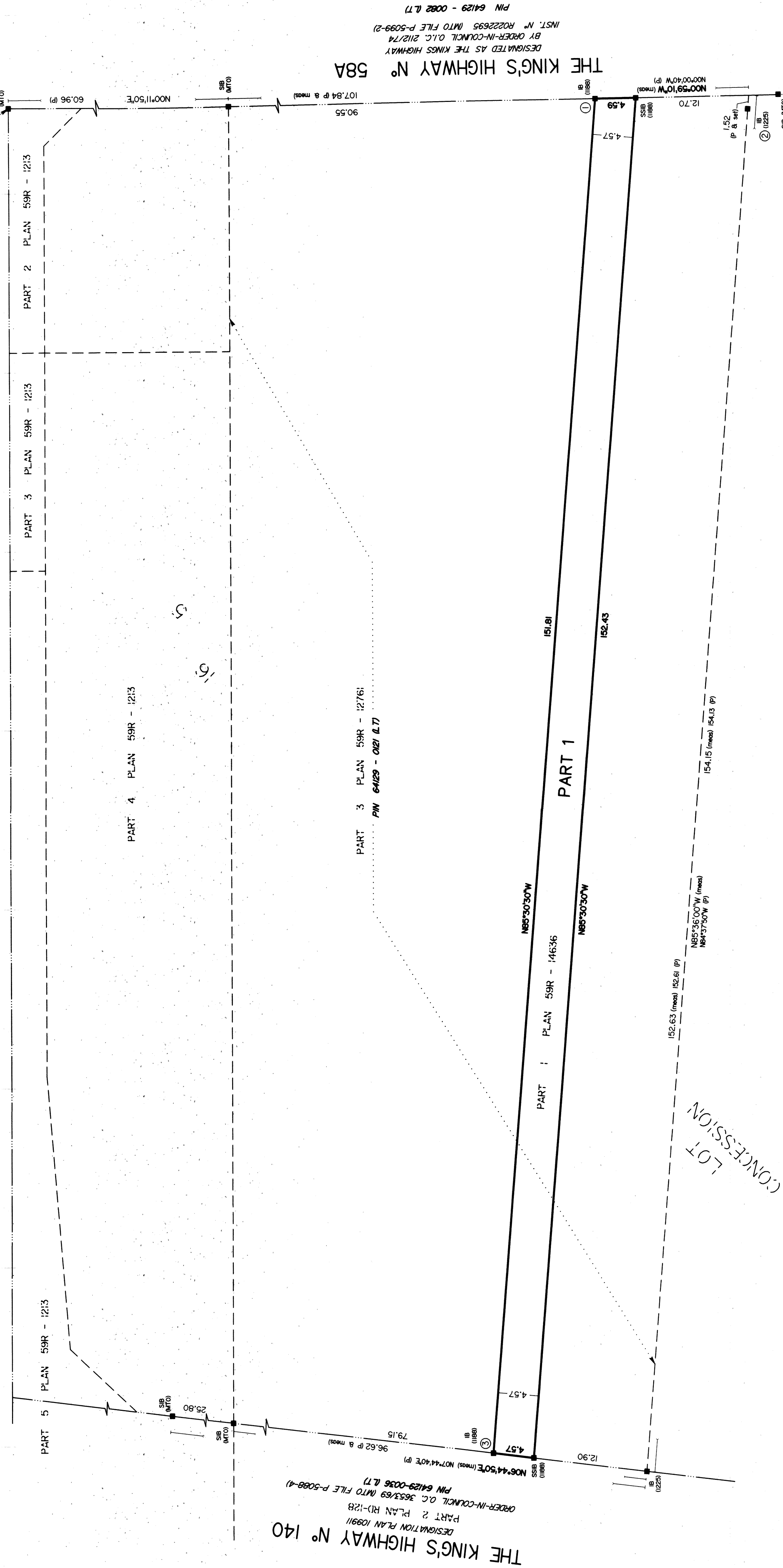
ENBRIDGE GAS DISTRIBUTION INC. under and by virtue of the Ontario Energy Board Act, 1998, S.O. 1998, Chapter 15, Schedule B, and in accordance with the Expropriations Act, R.S.O. 1990 and the Public Utilities Act, R.S.O. 1990, pursuant to Order of the Ontario Energy Board N° EB-2011-0391, dated June 14, 2012 herby takes and expropriates on easement in favour of Enbridge Gas Distribution Inc. and any successors, assigns, servants or agents thereof, in perpetuity to enter upon the lands to survey, remove trees, clear, lay, construct, install, operate, use, inspect, remove, renew, replace, alter, enlarge, reconstruct, repair, expand, maintain pipelines and all works, appurtenances, attachments, apparatus, appliances, markers, fixtures and equipment.

William J. Conforti
William J. Conforti
Manager Land Services

Lloyd Chitt
Lloyd Chitt
Director Distribution Asset Management
ENBRIDGE GAS DISTRIBUTION INC.
I HAVE THE AUTHORITY TO BIND THE CORPORATION

NETHERBY ROAD
(FORMERLY TOWNLINE ROAD)
ROAD ALLOWANCE BETWEEN THE TOWNSHIPS OF CROWLAND AND HUMBERSTONE

Noted: One of
Lot 15, Concession 5
Township of Humberstone



PLAN SN353858

I CERTIFY THAT THIS PLAN IS REGISTERED IN THE LAND REGISTRY OFFICE FOR THE LAND TILES DIVISION OF NIAGARA SOUTH (N° 59) AT 11:12 O'CLOCK ON THE 10th DAY OF August 2012 AND ENTERED IN THE PARCEL REGISTER FOR PROPERTY IDENTIFIER 64129-0121 (LT)

K. Epp
K. EPP
REPRESENTATIVE FOR LAND REGISTRAR

Expropriations Act R.S.O. 1990 Chapter E.26, Section 9(1) Ontario Energy Board Act, 1998 S.O. 1998 Chapter 15, Schedule B, Section 99

| SCHEDULE | | | |
|-----------------|----------------|------------|---------------------|
| PART | LOT | CONCESSION | AREA m ² |
| 1 | PART OF LOT 16 | 5 | 695 |
| PART OF LOT 16 | | | |
| 64129-0121 (LT) | | | |

PLAN OF SURVEY OF
PART OF LOT 16
CONCESSION 5
(GEOGRAPHIC TOWNSHIP OF HUMBERSTONE)
CITY OF WELLAND
REGIONAL MUNICIPALITY OF NIAGARA
SEXTON MCKAY LIMITED
ONARIO LAND SURVEYORS
140 NETHERBY ROAD, NIAGARA FALLS, ONTARIO L2R 6K5
T: (905) 477-5800 F: (905) 477-5805 www.sjgland.com

SCALE 1 : 300
0 5 10 15 20 30m

METRIC
DISTANCES AND/OR COORDINATES SHOWN ON THIS PLAN ARE IN METRES AND CAN BE CONVERTED TO FEET BY DIVIDING BY 0.3048

NOTES
1. THIS SURVEY AND PLAN ARE CORRECT AND IN ACCORDANCE WITH THE SURVEY ACT, THE EXPROPRIATIONS ACT AND THE REGULATIONS MADE UNDER THEM.
2. THE SURVEY WAS COMPLETED ON THE 18TH DAY OF JULY, 2012

LEGEND
DENOTES SURVEY MONUMENT FOUND
DENOTES SURVEY MONUMENT SET
DENOTES STANDARD IRON BAR
DENOTES SHORT STANDARD IRON BAR
DENOTES WITNESS
DENOTES WITNESS
DENOTES MAIN PIPE OF TRANSPORTATION OF ONTARIO
DENOTES RASH & CHAMBERS LIMITED
DENOTES RASH & CHAMBERS LIMITED
DENOTES RASH & CHAMBERS LIMITED
DENOTES SEXTON MCKAY LTD. O.L.S.

INTEGRATION DATA

OBSERVED REFERENCE POINTS (ORP'S) DERIVED FROM GPS OBSERVATION USING THE POWERNET NETWORK SERVICE AND ARE REFERRED TO UTM ZONE 18N AND 83 (SPRS) (1867.0)

COORDINATE VALUES TO AN URBAN ACCURACY IN ACCORDANCE WITH SECTION 14 (2) OF OREG 216/70

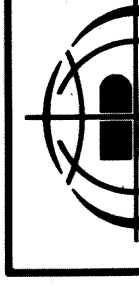
| POINT ID | NORTHING | | EASTING | |
|----------|------------|------------|-----------|-----------|
| | 1 | 2 | 3 | 4 |
| 1 | 4758020.43 | 4758020.43 | 646376.55 | 646376.55 |
| 2 | 4758003.26 | 4758003.26 | 646376.33 | 646376.33 |
| 3 | 4758032.32 | 4758032.32 | 646225.21 | 646225.21 |

COORDINATES CANNOT IN THEMSELVES BE USED TO RE-ESTABLISH CORNERS OR BOUNDARIES SHOWN ON THIS PLAN.

SURVEYOR'S CERTIFICATE

I CERTIFY THAT :
1. THIS SURVEY AND PLAN ARE CORRECT AND IN ACCORDANCE WITH THE SURVEY ACT, THE EXPROPRIATIONS ACT AND THE REGULATIONS MADE UNDER THEM.
2. THE SURVEY WAS COMPLETED ON THE 18TH DAY OF JULY, 2012

DATE July 19, 2012 G. C. Latham
G. C. LATHAM
ONARIO LAND SURVEYOR



SEXTON MCKAY
A wholly owned subsidiary of J.D. Burtin Limited
Ontario Land Surveyors / Canada Land Surveyor
140 NETHERBY ROAD, NIAGARA FALLS, ONTARIO L2R 6K5
T: (905) 477-5800 F: (905) 477-5805 www.sjgland.com

DRAWN BY: 18 CHECKED BY: GCL REFERENCE NO.: 11-12-208-01-E
FILE: S:\102800\11-12-208-01-E.dwg DATED: JUN 18, 2012

