

Summary

Distributor Name

EnWin Utilities Ltd.

For the Period From

May 1, 2013

For the Period To

May 31, 2013

First Submitted On

June 4, 2013

Submitter Name

June Broadfoot

Status

Submitted

Due Date

June 10, 2013

RRR Filing No

4,043

Report Version

0

Edit Date

June 4, 2013 2:17 PM

Expiry Date

June 11, 2013

RPP Eligible Consumers:

Description	Residential Class	General Service Less Than 50kW Class	Total
Total Number of RPP-eligible consumers	77,207	7,124	84,331
Number of smart meters installed in the period	18	9	27
Number of smart meters registered with the MDM/R in the period	0	0	0
Number of RPP consumers being charged TOU prices added in the period	0	0	0
Total cumulative number of smart meters installed in the service area at the end of the period	78,090	7,528	85,618
Total cumulative number of smart meters registered with the MDM/R at the end of the period	0	0	0
Total cumulative number of consumers being charged TOU prices at the end of the period	0	0	0

Percentages (Calculated on Save)

Percentage of RPP-eligible consumers with smart meters installed at the end of the period

Residential Class	General Service Less Than 50kW Class	Total
101.10	105.70	101.50





Percentage of total smart meters installed that are registered with the MDM/R at the end of the period





Residential Class	General Service Less Than 50kW Class	Total
0.00	0.00	0.00

Percentage of total RPP-eligible consumers being charged TOU prices at the end of the period





Residential Class	General Service Less Than 50kW Class	Total
0.00	0.00	0.00


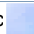


Progress Report on SME Milestones





Activity	Original Scheduled Completion Date	Status	Expected Completion Date	Actual Completion Date
1. AMCC Internal Testing		Comp 	July 30, 2010 	July 30, 2010 





Activity	Original Scheduled Completion Date	Status	Expected Completion Date	Actual Completion Date
2. CIS Internal Testing	September 4, 2013 	On Sc 	September 4, 2013 	

Activity	Yes or No?	Expected Completion Date	Actual Completion Date
3. MDM/R Registration Application submitted	Yes 	January 1, 2010 	January 1, 2010 

Activity	Yes or No?	Status, if Yes	Expected Completion Date	Actual Completion Date
4. Enrolment Wave requested and confirmed (Note: the SME will either confirm the requested start date or suggest an alternate)	Yes 	Ahead 	March 25, 2013 	January 23, 2013 

Activity	Original Scheduled Completion Date	Status	Expected Completion Date	Actual Completion Date
5. Unit Testing	September 12, 2013 	On Sc 	September 12, 2013 	

Activity	Original Scheduled Completion Date	Status	Expected Completion Date	Actual Completion Date
6. Submitted a completed Self Certification for Enrolment Testing SME_FORM_0007 (Note: This must be submitted at least one week prior to the confirmed enrolment wave start date)	August 26, 2013 	On Sc 	August 26, 2013 	

Activity	Original Scheduled Completion Date	Status	Expected Completion Date	Actual Completion Date
7. System Integration Testing (SIT)	September 18, 2013 	On Sc 	September 18, 2013 	

Activity	Original Scheduled Completion Date	Status	Expected Completion Date	Actual Completion Date
8. Qualification Testing (QT)	October 17, 2013	On Schedule	October 17, 2013	

Activity	Original Scheduled Completion Date	Status	Expected Completion Date	Actual Completion Date
9. Self Certification - Cutover	November 28, 2013	Behind	January 6, 2014	

Activity	Original Scheduled Completion Date	Status	Expected Completion Date	Actual Completion Date
10. Transition to Production Operations	March 26, 2014	Behind	April 2, 2014	

Additional Comments and Information

Additional Comments

EnWin expects to meet the requirement to apply TOU pricing under the Standard Supply Service Code to all of its customers by April 30, 2014 as approved in application EB-2012-0405

Declaration: I confirm that the information contained in this report is true, accurate, and complete.
 IMPORTANT: Choose Yes to submit this filing. Otherwise the form will be saved but not submitted.

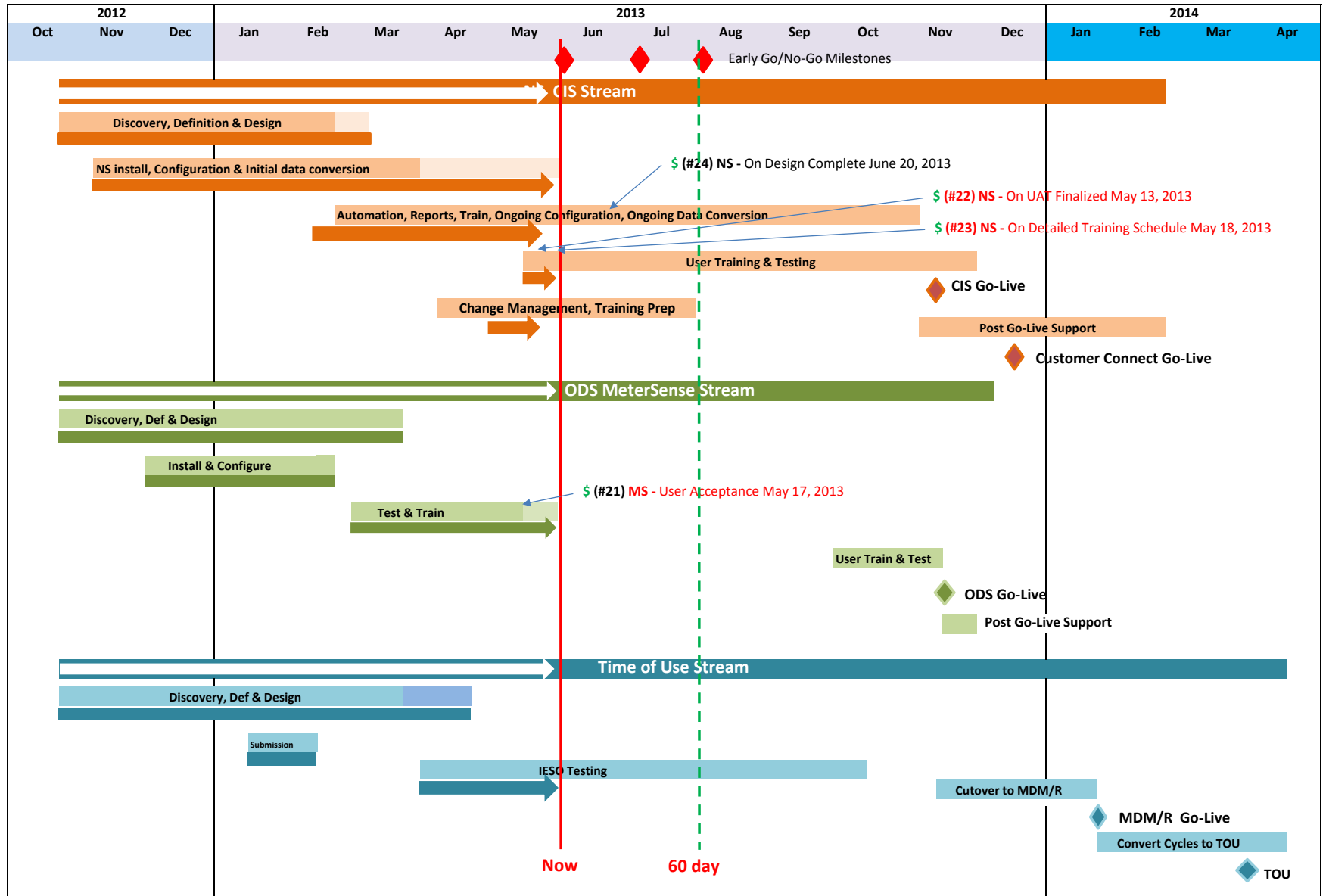
* Submit Form

No

CIS

ODS

TOU



Draft - North Star Implementation Project Plan										
ID	% Complete	% Work Complete	Task Name	Start	Finish	Work	Duration	September	October	November
1	54%	47%	Draft EnWin NorthStar Implementation Project Plan	Mon 12-10-15	Wed 14-04-02	35,797.58 hrs	73.2 wks?			
2										
3	100%	100%	START DATE (Tentative - Would need to be confirmed and reviewed at Contract Signature)	Mon 12-10-15	Mon 12-10-15	0 hrs	0 wks		10-15	
4	0%	0%	Milestone Validation section	Wed 13-09-04	Thu 13-11-14	0 hrs	10.05 wks			
5	0%	0%	CIS Accepted Solution (fixed)	Wed 13-09-04	Wed 13-09-04	0 hrs	0 wks			
6	0%	0%	CIS Accepted Solution tracked	Wed 13-09-04	Wed 13-09-04	0 hrs	0 wks			
7	0%	0%	CIS Go-Live (Fixed)	Mon 13-11-11	Mon 13-11-11	0 hrs	0 wks			
8	0%	0%	CIS Go-Live tracked	Mon 13-11-11	Mon 13-11-11	0 hrs	0 wks			
9	0%	0%	ERTH QT Complete (Fixed)	Mon 13-10-21	Mon 13-10-21	0 hrs	0 wks			
10	0%	0%	ERTH QT Complete tracked	Mon 13-10-21	Mon 13-10-21	0 hrs	0 wks			
11	0%	0%	MS Solution Live (fixed)	Thu 13-11-14	Thu 13-11-14	0 hrs	0 wks			
12	0%	0%	MS Solution Live tracked	Thu 13-11-14	Thu 13-11-14	0 hrs	0 wks			
13										
14	53%	44%	CIS Project	Mon 12-10-15	Mon 14-03-24	24,564.07 hrs	71.7 wks?			
15	48%	48%	Project Management	Mon 12-10-15	Tue 14-03-11	4,792.13 hrs	70 wks			
16	48%	47%	Project Management / Technical Oversight / IT Environment Support	Mon 12-10-15	Tue 14-03-11	4,041.13 hrs	70 wks			
20	47%	47%	Communication Management	Mon 12-10-15	Tue 14-03-11	532 hrs	70 wks			
25	48%	51%	Risk Management	Mon 12-10-15	Tue 14-02-04	37 hrs	65 wks			
28	100%	100%	Project Plan	Mon 12-10-15	Fri 12-11-16	96 hrs	5 wks			
33	69%	42%	Deliverable/Acceptance Management	Mon 12-11-19	Tue 13-01-22	86 hrs	8 wks			
39	94%	97%	Solution Definition Phase	Mon 12-10-15	Mon 13-04-15	2,822 hrs	24.6 wks			
40	100%	100%	Project Preparation	Mon 12-10-15	Fri 12-10-19	30 hrs	0.85 wks			
43	100%	100%	Project Kick-Off	Mon 12-10-15	Tue 12-10-23	124 hrs	1.4 wks			
47	100%	100%	NorthStar Product Orientation Session - Training	Mon 12-10-15	Thu 12-10-25	161 hrs	1.8 wks			
51	100%	100%	Discovery	Mon 12-10-15	Wed 12-11-07	1,038 hrs	3.6 wks			
59	94%	97%	CIS Definition	Thu 12-11-08	Fri 13-02-01	1,150 hrs	11 wks			
102	84%	83%	Customer Connect Definition	Mon 13-02-04	Mon 13-04-15	319 hrs	10 wks			
112	0%	0%	NS - Milestone - CustomerConnect requirements document finalized.	Mon 13-04-15	Mon 13-04-15	0 hrs	0 wks			
113	0%	0%	NS - Invoice Milestone - Sign off on Requirements Documents	Fri 13-01-04	Fri 13-01-04	0 hrs	0 wks			
114	100%	100%	Solution Design Phase	Mon 12-10-15	Fri 13-02-22	739.93 hrs	17.3 wks			
115	100%	100%	CIS Design	Mon 12-10-15	Fri 13-02-15	739.93 hrs	16.6 wks			
161	100%	100%	NS - Milestone - Solution Design Complete	Fri 13-02-22	Fri 13-02-22	0 hrs	0 wks			
162	78%	80%	Solution Configuration and Construction Phase	Mon 12-11-05	Wed 13-06-19	6,312.52 hrs	30.8 wks			
163	78%	80%	CIS Configuration and Construction	Mon 12-11-05	Wed 13-06-19	6,312.52 hrs	30.8 wks			
292	1%	0%	Solution Validation Phase	Thu 13-05-23	Wed 13-09-04	7,806.13 hrs	14.35 wks?			
293	1%	0%	CIS Validation	Thu 13-05-23	Wed 13-09-04	7,806.13 hrs	14.35 wks?			
385	0%	0%	Solution Transition Readiness Phase	Tue 13-08-20	Thu 13-11-07	876 hrs	11 wks			
386	0%	0%	CIS Transition Readiness	Tue 13-08-20	Thu 13-11-07	876 hrs	11 wks			

Page 1

Draft - North Star Implementation Project Plan												
ID	% Complete	% Work Complete	Task Name	Start	Finish	Work	Duration	Timeline		Dependencies	Notes	Status
								September	October			
420	0%	0%	CIS Solution Go-Live Phase	Mon 12-10-15	Mon 14-03-24	1,215.37 hrs	71.7 wks					
421	0%	0%	CIS Go-Live	Thu 13-10-24	Thu 13-12-12	605 hrs	6.9 wks					
447	0%	0%	Post-Go-Live	Mon 12-10-15	Mon 14-03-24	610.37 hrs	71.7 wks					
460	0%	0%	NS - NorthStar CIS Project Implementation End Date	Mon 14-03-24	Mon 14-03-24	0 hrs	0 wks					
461												
462												
463	44%	26%	MDM/R Project	Mon 12-10-15	Wed 14-04-02	6,152.23 hrs	73.2 wks?					
464	48%	52%	Project Management	Mon 12-10-15	Tue 14-03-11	739.4 hrs	70 wks					
465	47%	47%	Project Management	Mon 12-10-15	Tue 14-03-11	560 hrs	70 wks					
468	47%	47%	Communication Management	Mon 12-10-15	Tue 14-03-11	70 hrs	70 wks					
471	47%	47%	Risk Management	Mon 12-10-15	Tue 14-03-11	35 hrs	70 wks					
473	100%	100%	IESO Project Plan	Mon 12-11-26	Wed 13-01-16	65.4 hrs	6.2 wks					
479	100%	100%	Initial MDM/R Registration Activities	Wed 13-01-16	Tue 13-01-22	4 hrs	1 wk					
487	67%	40%	Ongoing MDM/R Registration Activities	Tue 13-01-22	Tue 13-10-29	5 hrs	38.95 wks					
498	100%	100%	Solution Definition Phase	Mon 12-10-15	Tue 12-11-13	313 hrs	4.4 wks					
499	100%	100%	Project Kick-Off	Mon 12-10-15	Tue 12-10-23	53 hrs	1.4 wks					
502	100%	100%	Discovery	Wed 12-10-24	Tue 12-11-13	260 hrs	3 wks					
508	76%	93%	Solution Design Phase	Wed 13-01-09	Mon 13-06-10	649.97 hrs	21.4 wks					
509	100%	100%	Business Process Changes Review	Wed 13-02-13	Tue 13-03-26	390 hrs	5.6 wks					
516	100%	100%	ER - Milestone - Business Process Changes Completed	Tue 13-03-26	Tue 13-03-26	0 hrs	0 days					
517	100%	100%	CIS Design Document	Tue 13-03-26	Fri 13-03-29	24 hrs	0.6 wks					
519	76%	96%	Unit Test Planning	Wed 13-01-09	Wed 13-02-13	67.97 hrs	5.2 wks					
527	100%	100%	Cutover Planning	Thu 13-02-07	Mon 13-03-25	86 hrs	6.4 wks					
534	18%	45%	Staff Training	Mon 13-05-06	Mon 13-06-10	82 hrs	5 wks					
542	100%	100%	Solution Construction Phase	Fri 12-12-21	Mon 13-06-10	108 hrs	22.6 wks					
543	100%	100%	CIS Implementation	Wed 13-03-13	Fri 13-04-05	48 hrs	3.4 wks					
547	100%	100%	Metersense Implementation	Thu 13-03-28	Wed 13-04-03	24 hrs	1 wk					
549	100%	100%	mCARE Implementation	Wed 13-04-03	Mon 13-06-10	0 hrs	9.4 wks					
552	100%	100%	AS2 Server Configuration	Fri 12-12-21	Thu 13-03-14	36 hrs	10.4 wks					
558	100%	100%	ER - Milestone - Completed All System Installations and Configurations	Thu 13-03-21	Thu 13-03-21	0 hrs	0 days					
559	31%	7%	Solution Validation Phase	Thu 13-04-04	Mon 13-09-09	2,756.5 hrs	21.8 wks?					
560	31%	7%	Unit Testing with IESO	Thu 13-04-04	Fri 13-08-30	2,756.5 hrs	20.8 wks?					
594	0%	0%	ER - Milestone - Unit Testing Completed	Fri 13-08-30	Fri 13-08-30	0 hrs	0 days					
595	0%	0%	MDM/R Checkpoint - Unit Testing Completed	Fri 13-08-30	Fri 13-08-30	0 hrs	0 days					
596	0%	0%	ER - Deliverable - MDM/R Unit Testing Results	Mon 13-09-09	Mon 13-09-09	0 hrs	0 wks					
597	0%	0%	Solution Transition Readiness	Wed 13-09-04	Mon 13-10-21	1,193.38 hrs	6.4 wks					
598	0%	0%	MDMR Enrolment - SIT	Wed 13-09-04	Fri 13-09-20	505.83 hrs	2.42 wks					
605	0%	0%	MDMR Enrolment - QT	Fri 13-09-20	Mon 13-10-21	687.55 hrs	4 wks					
613	0%	0%	Solution Go-Live	Mon 13-11-11	Mon 13-12							

Draft - North Star Implementation Project Plan												
ID	% Complete	% Work Complete	Task Name	Start	Finish	Work	Duration	September	October	November		
614	0%	0%	MDMR Enrolment - Cutover	Mon 13-11-11	Mon 13-12-02	136 hrs	3 wks					
619	0%	0%	Post Implementation Support	Mon 14-01-06	Wed 14-04-02	256 hrs	12.6 wks					
620	0%	0%	ER - Periodic Billing with MDM/R	Mon 14-01-06	Tue 14-03-04	0 hrs	42 days					
621	0%	0%	ER - OnSite Support for Transition to MDM/R Billing	Mon 14-01-06	Fri 14-01-24	120 hrs	3 wks					
622	0%	0%	ER - Milestone - MDMR Periodic Billing Cutover	Mon 14-01-06	Mon 14-01-06	0 hrs	0 days					
623	0%	0%	ER - Bill Pilot Cycles on TOU	Mon 14-02-03	Mon 14-02-03	16 hrs	1 day					
624	0%	0%	ER -VEE Service Change on Remaining Cycles	Tue 14-03-04	Tue 14-03-04	0 hrs	1 day					
625	0%	0%	ER - Bill on TOU	Wed 14-03-05	Tue 14-04-01	0 hrs	20 days					
626	0%	0%	ER - Invoice Milestone - Transition to TOU Billing	Wed 14-04-02	Wed 14-04-02	0 hrs	0 wks					
627	0%	0%	ER - Onsite Support for Transition to TOU	Wed 14-03-05	Tue 14-03-25	120 hrs	3 wks					
628	0%	0%	ER - Post Cutover Activities Completed	Tue 14-04-01	Tue 14-04-01	0 hrs	0 days					
629												
630												
631	61%	83%	MeterSense Project - ENWIN	Mon 12-10-15	Mon 14-01-06	5,081.28 hrs	60.8 wks					
632	51%	54%	Project Management	Mon 12-10-15	Mon 14-01-06	996 hrs	60.8 wks					
633	50%	50%	Project Management / Technical Oversight	Mon 12-10-15	Mon 13-12-30	350 hrs	60 wks					
636	50%	50%	Communication Management	Mon 12-10-15	Mon 14-01-06	432 hrs	60.8 wks					
641	50%	50%	Scope Management	Mon 12-10-15	Mon 13-12-30	60 hrs	60 wks					
643	52%	60%	Risk Management	Mon 12-10-15	Wed 13-11-20	82 hrs	55 wks					
646	100%	100%	Project Plan	Mon 12-10-15	Wed 13-02-20	72 hrs	17 wks					
651	100%	100%	NorthStar MeterSense Solution Definition Phase	Mon 12-10-15	Tue 13-02-05	832.27 hrs	15 wks					
652	100%	100%	Project Preparation	Mon 12-10-15	Fri 12-10-19	36 hrs	1 wk					
655	100%	100%	Project Kick-Off	Mon 12-10-15	Tue 12-10-23	63 hrs	1.4 wks					
659	100%	100%	NorthStar MeterSense Product Orientation Session - Training	Wed 12-10-24	Fri 12-11-02	24.8 hrs	1.6 wks					
663	100%	100%	Discovery	Wed 12-10-24	Wed 12-11-07	213.47 hrs	2.2 wks					
669	100%	100%	Physical Architecture Review / Recommendation	Mon 12-12-10	Tue 13-01-22	71.48 hrs	5 wks					
673	100%	100%	Solution Requirements Documents	Mon 12-11-12	Fri 12-12-07	141.35 hrs	4 wks					
679	100%	100%	Integration Requirements Document	Mon 12-11-12	Fri 12-12-07	82.32 hrs	4 wks					
685	100%	100%	Training / Change Management Plan	Mon 12-11-19	Tue 13-02-05	92.27 hrs	10 wks					
691	100%	100%	Test Plan	Mon 12-11-19	Tue 13-02-05	107.57 hrs	10 wks					
697	100%	100%	MS - Invoice Milestone - Sign off on Solutions Requirements Document	Fri 12-12-07	Fri 12-12-07	0 hrs	0 wks					
698	100%	100%	MeterSense Solution Design Phase	Wed 12-10-24	Wed 13-02-27	483.38 hrs	16.6 wks					
699	100%	100%	Integration Design Document Document	Mon 12-12-10	Wed 13-02-20	216 hrs	9 wks					
703	100%	100%	Test Cases / Scenarios Document	Wed 13-02-06	Wed 13-02-27	63.38 hrs	3 wks					
707	100%	100%	NorthStar MeterSense Base Solution Installation and Configuration	Wed 12-10-24	Fri 12-12-14	204 hrs	7.6 wks					
714	100%	100%	MeterSense Configuration and Construction Phase	Wed 13-01-02	Tue 13-04-30	699.5 hrs	16.8 wks					
715	100%	100%	Configuration and Construction	Wed 13-01-02	Tue 13-03-26	540 hrs	11.8 wks					
731	100%	100%	Milestone - Solution Feature Complete	Tue 13-03-26	Tue 13-03-26	0 hrs	0 wks					

Page 3

Draft - North Star Implementation Project Plan												
ID	% Complete	% Work Complete	Task Name	Start	Finish	Work	Duration	September		October	November	December
732	100%	100%	User Acceptance Testing Detailed Plan Document	Wed 13-03-27	Tue 13-04-30	140 hrs	5 wks					
738	100%	100%	Training Detailed Schedule	Thu 13-02-28	Wed 13-03-27	19.5 hrs	4 wks					
742	98%	95%	MeterSense Solution Validation Phase	Wed 13-02-27	Fri 13-05-17	1,684.13 hrs	11.6 wks					
743	100%	100%	Testing Environment	Wed 13-02-27	Tue 13-03-26	80 hrs	4 wks					
745	100%	100%	Functional Testing	Wed 13-03-27	Tue 13-04-16	601.37 hrs	3 wks					
749	100%	100%	Integration Testing	Wed 13-04-17	Tue 13-04-30	263.97 hrs	2 wks					
754	85%	80%	Training	Mon 13-04-22	Fri 13-05-03	330.8 hrs	2 wks					
761	95%	96%	User Acceptance Testing	Mon 13-05-06	Fri 13-05-17	408 hrs	2 wks					
766	0%	0%	MS - Deliverable - Accepted Solution	Fri 13-05-17	Fri 13-05-17	0 hrs	0 wks					
767	0%	0%	1.5 Years of Historical Data Loading	Mon 13-06-17	Mon 13-10-28	82 hrs	18.4 wks					
768	0%	0%	MS - Finalize Timing of Data Load	Mon 13-06-17	Mon 13-06-17	2 hrs	1 day					
769	0%	0%	MS - Schedule and execute data archiving and restore testing	Tue 13-06-18	Tue 13-07-09	20 hrs	3 wks					
770	0%	0%	MS - Assemble Historical Sensus and MV90 Data	Fri 13-08-16	Fri 13-09-13	0 hrs	4 wks					
771	0%	0%	MS - Load and Validate Data	Mon 13-09-16	Mon 13-10-28	60 hrs	6 wks					
772	53%	25%	MeterSense Solution Production Environment Phase	Fri 13-02-01	Thu 13-11-28	304 hrs	41.75 wks					
773	89%	76%	Production Environment	Fri 13-02-01	Thu 13-10-24	100 hrs	36.75 wks					
778	0%	0%	Business Process Training (prior to Live)	Thu 13-10-17	Thu 13-11-07	112 hrs	3 wks					
782	0%	0%	Production Environment Release	Thu 13-11-07	Thu 13-11-14	32 hrs	1 wk					
787	0%	0%	Post-Production Environment - Enhanced Support	Thu 13-11-14	Thu 13-11-28	60 hrs	2 wks					
789	0%	0%	MS - Milestone - MeterSense Project Completed	Thu 13-11-28	Thu 13-11-28	0 hrs	0 wks					
790	0%	0%	Milestone - Final Acceptance of Project Closeout	Tue 14-04-01	Tue 14-04-01	0 hrs	0 wks					
791												
792												
793	18%	22%	EnWin Project Tasks	Mon 12-10-15	Wed 14-05-21	2,551.5 hrs	80.2 wks?					
794	31%	30%	Document Review and Solution Requirements	Mon 12-10-15	Mon 13-05-20	334 hrs	29.6 wks?					
795	100%	100%	EW - Schedule Team to Review	Mon 13-01-14	Mon 13-01-14	2 hrs	1 day					
796	100%	100%	EW - Forward Updates	Tue 13-01-15	Tue 13-01-15	2 hrs	1 day					
797	100%	100%	Solution Requirements and customization Docs Sign-off	Fri 13-01-25	Fri 13-01-25	2 hrs	0.2 wks					
799	100%	100%	Review Integration Requirements Document	Fri 13-01-18	Mon 13-01-21	20 hrs	0.4 wks					
802	98%	98%	Review Test Plan Document	Mon 13-01-21	Fri 13-01-25	36 hrs	1 wk					
807	20%	30%	Customer Connect Definition/Requirements Review	Mon 12-10-15	Tue 13-02-19	12 hrs	16.8 wks?					
812	20%	30%	mCare Definition/Requirements Review	Mon 12-10-15	Tue 13-02-19	12 hrs	16.8 wks?					
817	25%	30%	EIS Definition/Requirements Review	Tue 13-02-12	Tue 13-02-19	12 hrs	1 wk					
821												
822												
823	99%	100%	Review Integration design Document	Tue 13-02-12	Mon 13-03-25	4 hrs	5.8 wks?					
827	80%	75%	Review Reports Design Document	Mon 13-01-28	Mon 13-02-11	16 hrs	2.2 wks					
831	0%	0%	Review Customizations development and design document	Mon 12-10-15	Fri 13-01-11	12 hrs	11.6 wks?					

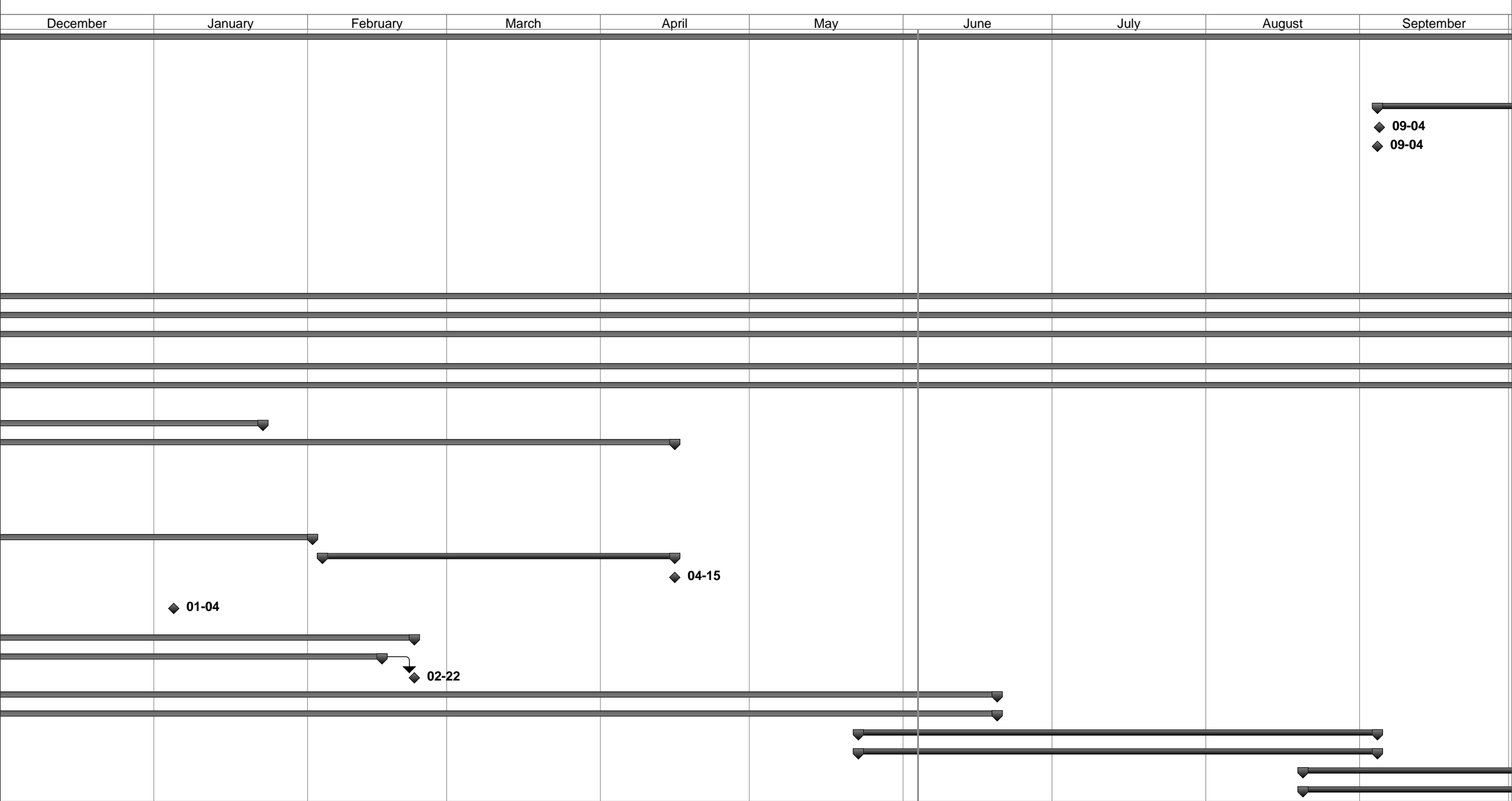
Page 4

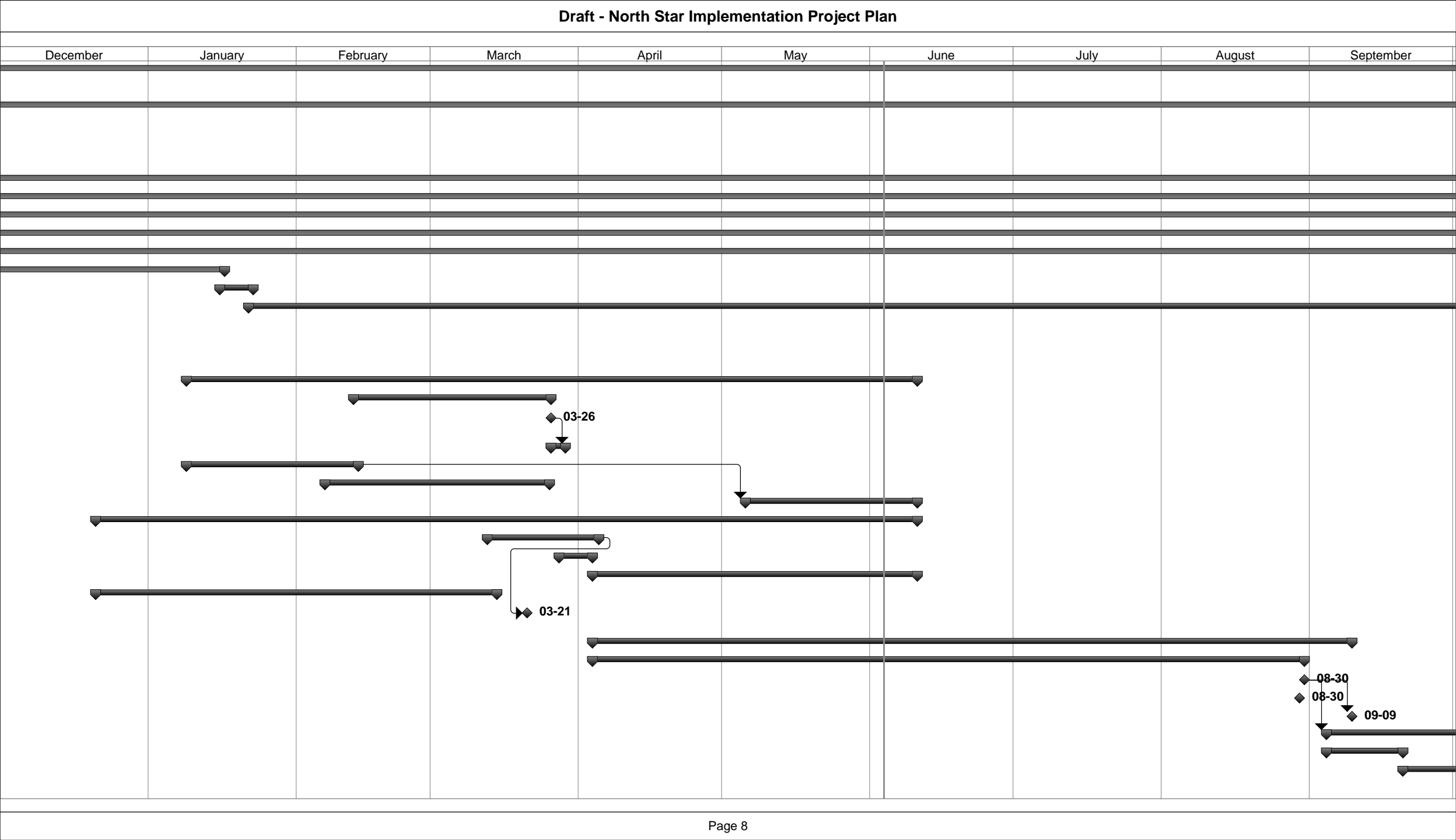
Draft - North Star Implementation Project Plan												
ID	% Complete	% Work Complete	Task Name	Start	Finish	Work	Duration	September		October	November	December
832	0%	0%	EW - Ensure team is scheduled and mods assigned to individuals, gather supporting docs and mod docs	Wed 13-01-09	Fri 13-01-11	12 hrs	3 days					
833	0%	0%	1.5 Years of Historical Data Loading	Mon 12-10-15	Mon 12-10-15	0 hrs	0.2 wks?					
836	0%	0%	CT/PT Screen Changes	Mon 12-10-15	Mon 12-10-15	0 hrs	0.2 wks?					
839	0%	0%	Drawing Number Inclusions	Mon 12-10-15	Mon 12-10-15	0 hrs	0.2 wks?					
842	0%	0%	Orphaned Meter Report	Mon 12-10-15	Mon 12-10-15	0 hrs	0.2 wks?					
845	0%	0%	Configure and setup mCARE - Business Process Discussion with EW	Tue 13-03-19	Tue 13-03-19	8 hrs	0.2 wks					
847	0%	0%	Configure and Setup EIS	Fri 13-03-01	Tue 13-03-05	8 hrs	0.6 wks					
849	0%	0%	Go-Live Approach Document	Fri 13-04-19	Mon 13-05-20	176 hrs	4.4 wks					
851	100%	100%	Meter to Transformer Relationships	Fri 13-03-01	Fri 13-03-01	8 hrs	0.2 wks					
853	100%	100%	Water Service Shut Off data	Fri 13-03-01	Fri 13-03-01	4 hrs	0.2 wks?					
855	27%	31%	IT Preparations for NS Support	Mon 13-01-14	Mon 13-11-04	32 hrs	41 wks					
856	100%	100%	Add-on server installation for CustConnect, EIS, mCare	Mon 13-01-14	Fri 13-02-15	10 hrs	5 wks					
859	0%	0%	iPad training for field personell	Mon 13-09-23	Mon 13-11-04	22 hrs	6 wks					
863	0%	0%	EW - Cancelling of ePost contract (reminder)	Mon 13-09-09	Fri 13-09-20	3.2 hrs	2 wks					
864	32%	25%	Additional I.T. Tasks	Fri 13-02-01	Tue 13-09-24	1,552.5 hrs	32.6 wks					
875												
876	14%	34%	Cut Over Planning & Preparation	Mon 13-03-04	Wed 14-05-21	130 hrs	61.8 wks					
882												
883	5%	6%	Post Go Live Support	Tue 13-03-26	Wed 13-07-17	168 hrs	16 wks					
888												
889	4%	0%	Communication Plan Strategy	Mon 13-03-25	Wed 14-04-30	76.8 hrs	55.8 wks?					
890	100%	100%	Selection	Mon 13-03-25	Thu 13-04-11	0 hrs	2.8 wks					
894	75%	0%	Budget Approval by Board	Fri 13-04-12	Fri 13-04-19	0 hrs	1.2 wks					
897	0%	0%	Weekly Update Meetings with Communication Partner	Fri 13-04-12	Wed 14-04-30	0 hrs	53 wks					
898	0%	0%	Scope, Strategy and Message Development	Fri 13-04-12	Mon 13-07-08	0 hrs	12 wks					
902	0%	0%	Communication	Tue 13-04-30	Fri 13-11-29	76.8 hrs	29.6 wks?					
903	0%	0%	Customer account number change	Mon 13-07-29	Fri 13-08-30	76.8 hrs	4.8 wks					
905	0%	0%	TOU and Customer Connect	Tue 13-07-09	Tue 13-07-09	0 hrs	0.2 wks?					
908	0%	0%	Bill Presentment and Rates	Tue 13-04-30	Fri 13-11-29	0 hrs	29.6 wks?					
919	0%	0%	WADU Message Communication	Tue 13-07-09	Tue 13-07-09	0 hrs	0.2 wks?					
920	0%	0%	CIS System Change Communication	Tue 13-07-09	Tue 13-07-09	0 hrs	0.2 wks?					
921												
922	0%	0%	Business Continuity	Wed 13-05-01	Mon 13-08-19	214 hrs	15.2 wks					
927												
928	33%	20%	Business Process Development	Fri 13-02-01	Thu 13-09-05	41 hrs	30 wks?					
929	0%	0%	Business Process Development	Fri 13-02-01	Fri 13-02-01	0 hrs	0 wks?					
930	100%	100%	Review Current EnWin Business Processes	Fri 13-02-01	Fri 13-02-22	0 hrs	3 wks					
931	100%	100%	Review Of ERTH and NS business processes	Fri 13-02-08	Fri 13-04-05	0 hrs	8 wks					
932	0%	0%	Formalize Integration of MS / CC / EIS / mCARE	Mon 13-04-01	Fri 13-04-05	0 hrs	1 wk					

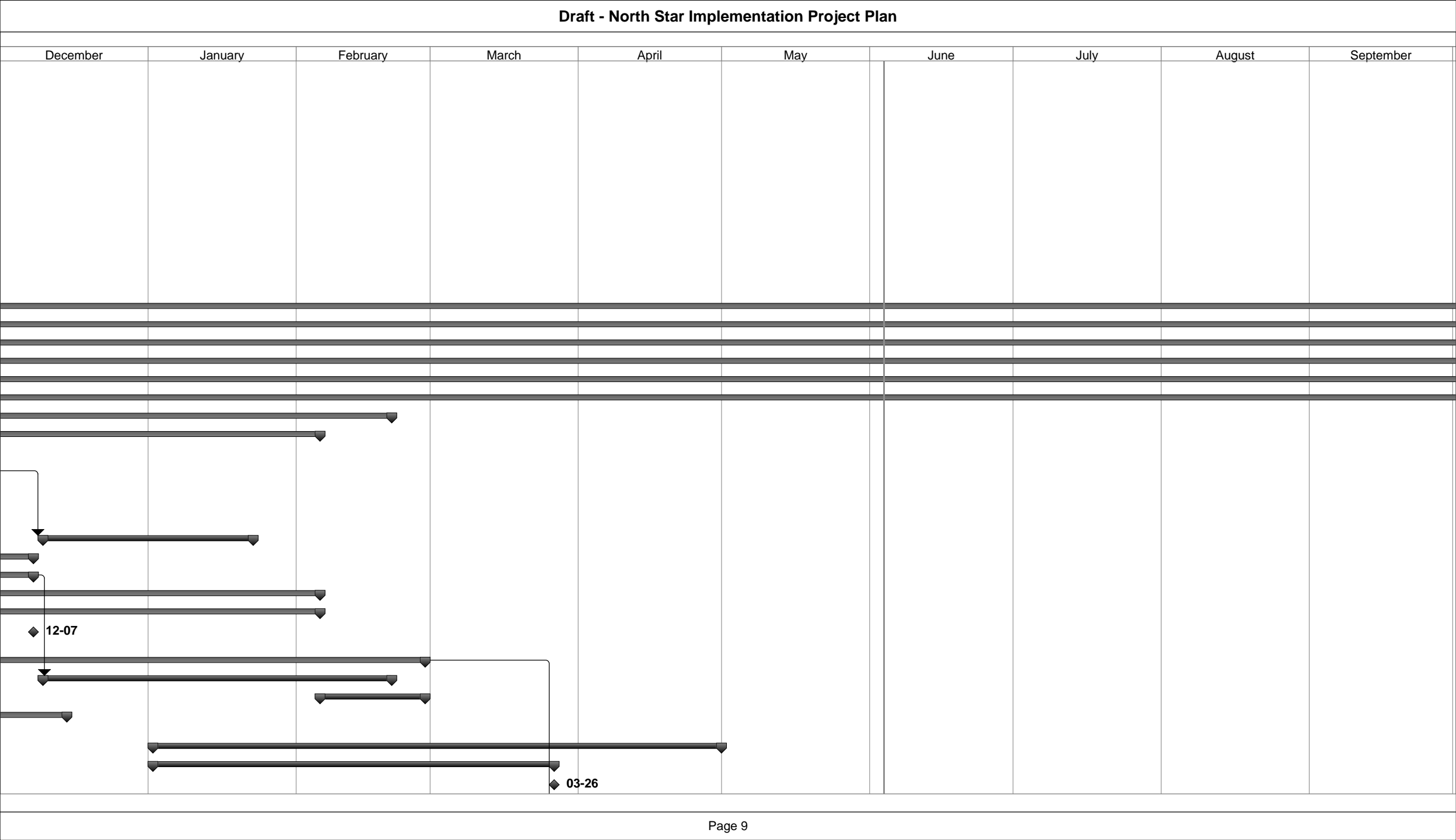
Page 5

ID	% Complete	% Work Complete	Task Name	Start	Finish	Work	Duration	Timeline			
								September	October	November	December
933	22%	20%	Gap Analysis	Fri 13-04-05	Thu 13-05-02	41 hrs	3.95 wks?				
934	0%	0%	Gap Analysis	Fri 13-04-05	Fri 13-04-05	0 hrs	0 wks?				
935	0%	0%	Gap Analysis	Thu 13-05-02	Thu 13-05-02	0 hrs	0 wks?				
936	22%	20%	CIS	Mon 13-04-08	Mon 13-04-29	41 hrs	3.2 wks				
943	0%	0%	Define Required Changes	Tue 13-04-30	Mon 13-05-13	0 hrs	2 wks				
944	0%	0%	Formalize "Training List" based on results of Gap Analysis	Tue 13-04-30	Thu 13-05-02	0 hrs	0.5 wks				
945	0%	0%	Incorporate MS / CC EIS into BP Mainstream	Thu 13-05-02	Thu 13-05-09	0 hrs	1 wk				
946	0%	0%	Preliminary Cost Assessment	Thu 13-05-09	Mon 13-05-13	0 hrs	0.5 wks				
947	0%	0%	Categorize Business Processes	Tue 13-05-14	Fri 13-05-17	0 hrs	0.8 wks				
948	0%	0%	Categorize Business Processes	Tue 13-05-14	Tue 13-05-14	0 hrs	1 day				
949	0%	0%	Develop Measurment Technique	Wed 13-05-15	Fri 13-05-17	0 hrs	3 days				
950	0%	0%	Socialize Changes With Decision Makers	Tue 13-05-14	Thu 13-05-16	0 hrs	3 days				
951	0%	0%	Redesign With Line Orgs.	Wed 13-05-08	Thu 13-07-04	0 hrs	8 wks?				
952	0%	0%	Redesign With Line Orgs.	Wed 13-05-08	Wed 13-05-08	0 hrs	0 wks?				
953	0%	0%	Formal Review of Business Process with Line Orgs.	Wed 13-05-08	Wed 13-05-22	0 hrs	2 wks				
954	0%	0%	Incorporate Feedback into BP	Thu 13-05-23	Wed 13-05-29	0 hrs	1 wk				
955	0%	0%	Get Sign Off of Final BP from Line Orgs.	Thu 13-05-30	Wed 13-06-05	0 hrs	1 wk				
956	0%	0%	Release BP to ERT	Wed 13-06-05	Wed 13-06-05	0 hrs	0 wks				
957	0%	0%	Org. and Cost Impacts	Thu 13-06-06	Wed 13-06-12	0 hrs	1 wk				
958	0%	0%	Approval Org. Impacts from Exec. Comm.	Thu 13-06-13	Wed 13-06-26	0 hrs	2 wks				
959	0%	0%	Incorporate Exec. Comm. Input	Thu 13-06-27	Thu 13-07-04	0 hrs	1 wk				
960	0%	0%	Staff and Execute	Fri 13-07-05	Thu 13-09-05	0 hrs	8.6 wks				

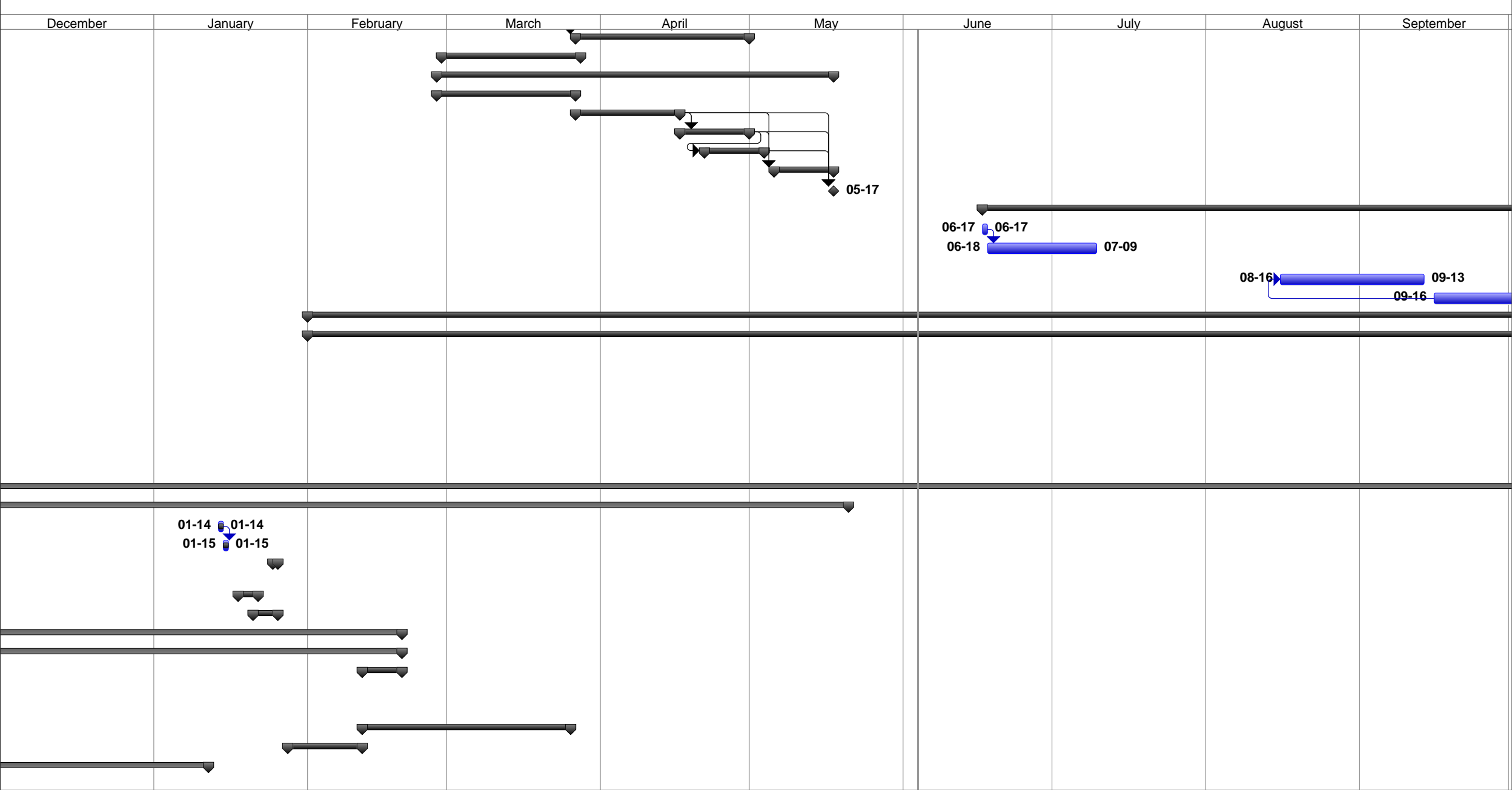
Draft - North Star Implementation Project Plan



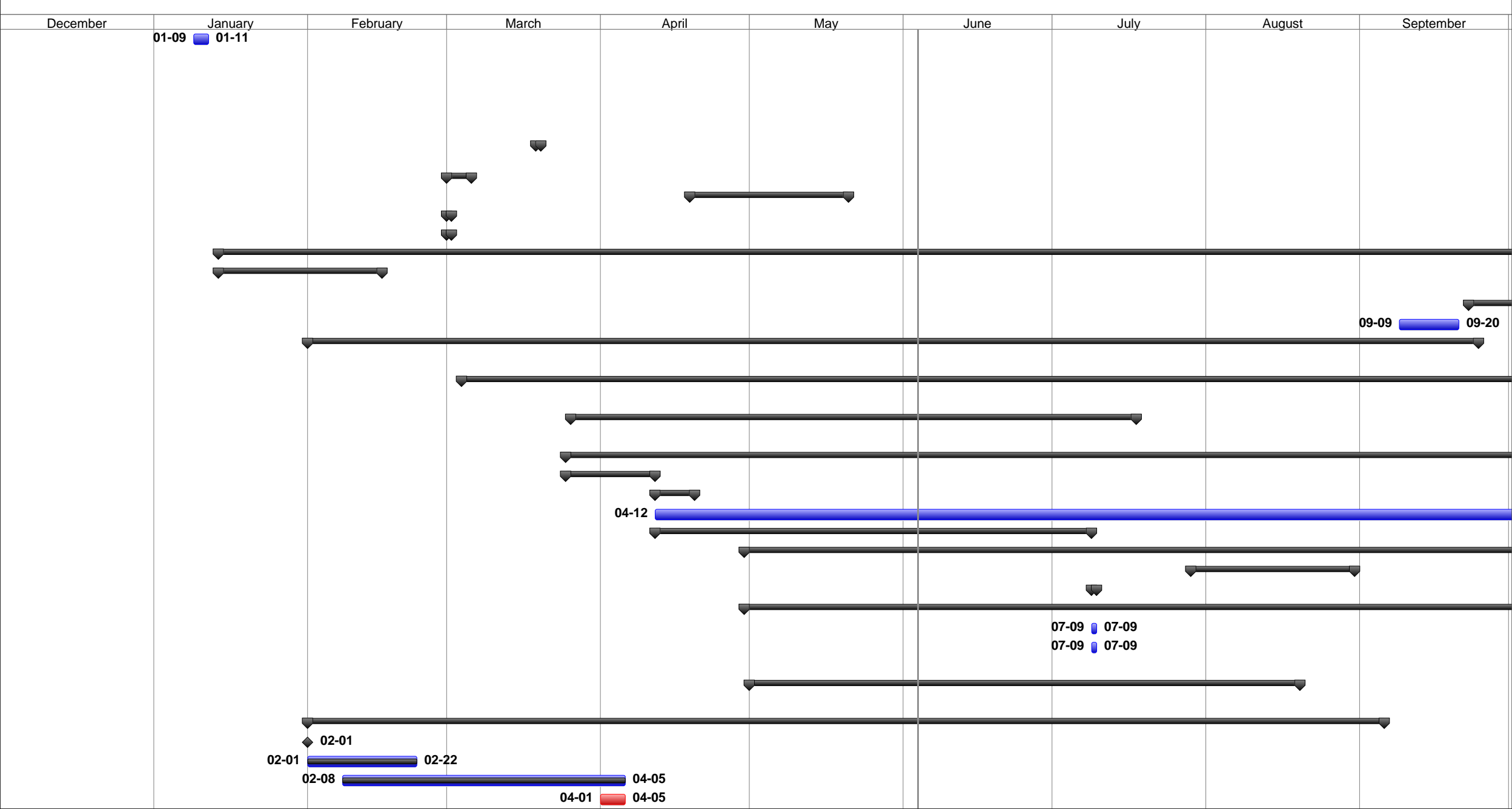


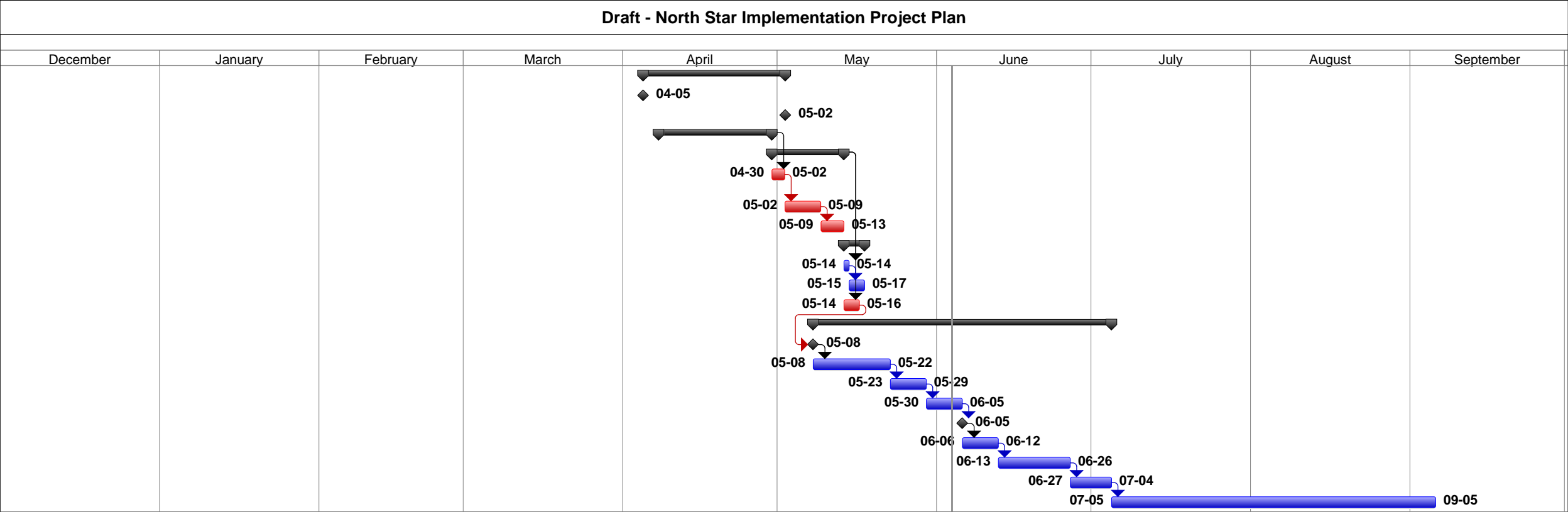


Draft - North Star Implementation Project Plan



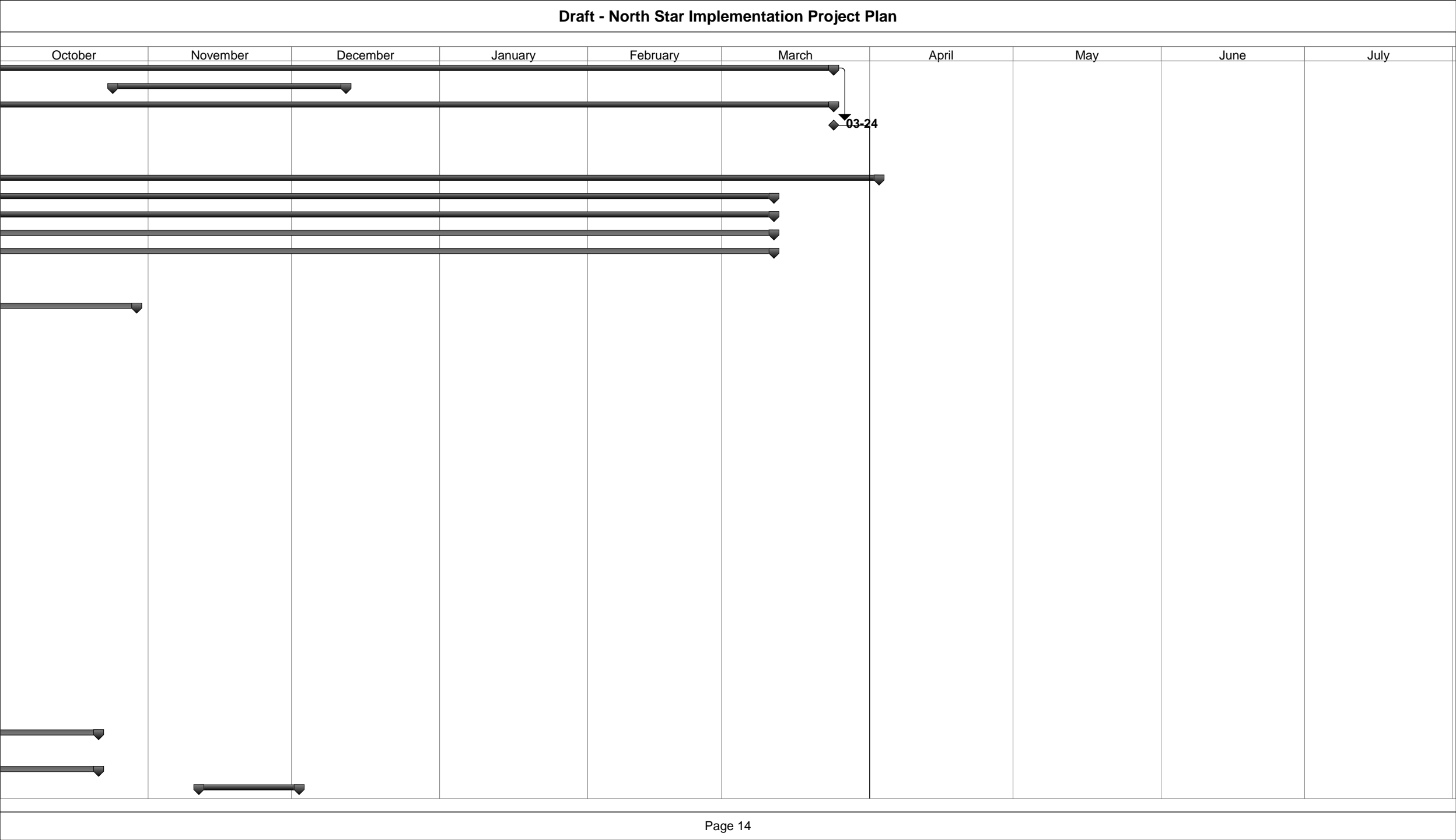
Draft - North Star Implementation Project Plan





Draft - North Star Implementation Project Plan





Draft - North Star Implementation Project Plan

