

Summary

Distributor Name

EnWin Utilities Ltd.

For the Period From

June 1, 2013

For the Period To

June 30, 2013

First Submitted On

July 2, 2013

Submitter Name

June Broadfoot

Status

Submitted

Due Date

July 10, 2013

RRR Filing No

4,479

Report Version

0

Edit Date

July 2, 2013 1:10 PM

Expiry Date

July 11, 2013

RPP Eligible Consumers:

Description	Residential Class	General Service Less Than 50kW Class	Total
Total Number of RPP-eligible consumers	77,255	7,139	84,394
Number of smart meters installed in the period	24	-3	21
Number of smart meters registered with the MDM/R in the period	0	0	0
Number of RPP consumers being charged TOU prices added in the period	0	0	0
Total cumulative number of smart meters installed in the service area at the end of the period	78,114	7,525	85,639
Total cumulative number of smart meters registered with the MDM/R at the end of the period	0	0	0
Total cumulative number of consumers being charged TOU prices at the end of the period	0	0	0

Percentages (Calculated on Save)

Percentage of RPP-eligible consumers with smart meters installed at the end of the period

Residential Class	General Service Less Than 50kW Class	Total
101.10	105.40	101.50





Percentage of total smart meters installed that are registered with the MDM/R at the end of the period





Residential Class	General Service Less Than 50kW Class	Total
0.00	0.00	0.00


Percentage of total RPP-eligible consumers being charged TOU prices at the end of the period





Residential Class	General Service Less Than 50kW Class	Total
0.00	0.00	0.00





Progress Report on SME Milestones





Activity	Original Scheduled Completion Date	Status	Expected Completion Date	Actual Completion Date
1. AMCC Internal Testing		Comp 	July 30, 2010 	July 30, 2010 





Activity	Original Scheduled Completion Date	Status	Expected Completion Date	Actual Completion Date
2. CIS Internal Testing	September 4, 2013 	On Sc 	September 4, 2013 	

Activity	Yes or No?	Expected Completion Date	Actual Completion Date
3. MDM/R Registration Application submitted	Yes 	January 1, 2010 	January 1, 2010 

Activity	Yes or No?	Status, if Yes	Expected Completion Date	Actual Completion Date
4. Enrolment Wave requested and confirmed (Note: the SME will either confirm the requested start date or suggest an alternate)	Yes 	Ahead 	March 25, 2013 	January 23, 2013 

Activity	Original Scheduled Completion Date	Status	Expected Completion Date	Actual Completion Date
5. Unit Testing	September 12, 2013 	On Sc 	September 12, 2013 	

Activity	Original Scheduled Completion Date	Status	Expected Completion Date	Actual Completion Date
6. Submitted a completed Self Certification for Enrolment Testing SME_FORM_0007 (Note: This must be submitted at least one week prior to the confirmed enrolment wave start date)	August 26, 2013 	On Sc 	August 26, 2013 	

Activity	Original Scheduled Completion Date	Status	Expected Completion Date	Actual Completion Date
7. System Integration Testing (SIT)	September 18, 2013 	On Sc 	September 18, 2013 	

Activity	Original Scheduled Completion Date	Status	Expected Completion Date	Actual Completion Date
8. Qualification Testing (QT)	October 17, 2013	On Schedule	October 17, 2013	

Activity	Original Scheduled Completion Date	Status	Expected Completion Date	Actual Completion Date
9. Self Certification - Cutover	November 28, 2013	Behind	January 6, 2014	

Activity	Original Scheduled Completion Date	Status	Expected Completion Date	Actual Completion Date
10. Transition to Production Operations	March 26, 2014	Behind	April 2, 2014	

Additional Comments and Information

Additional Comments

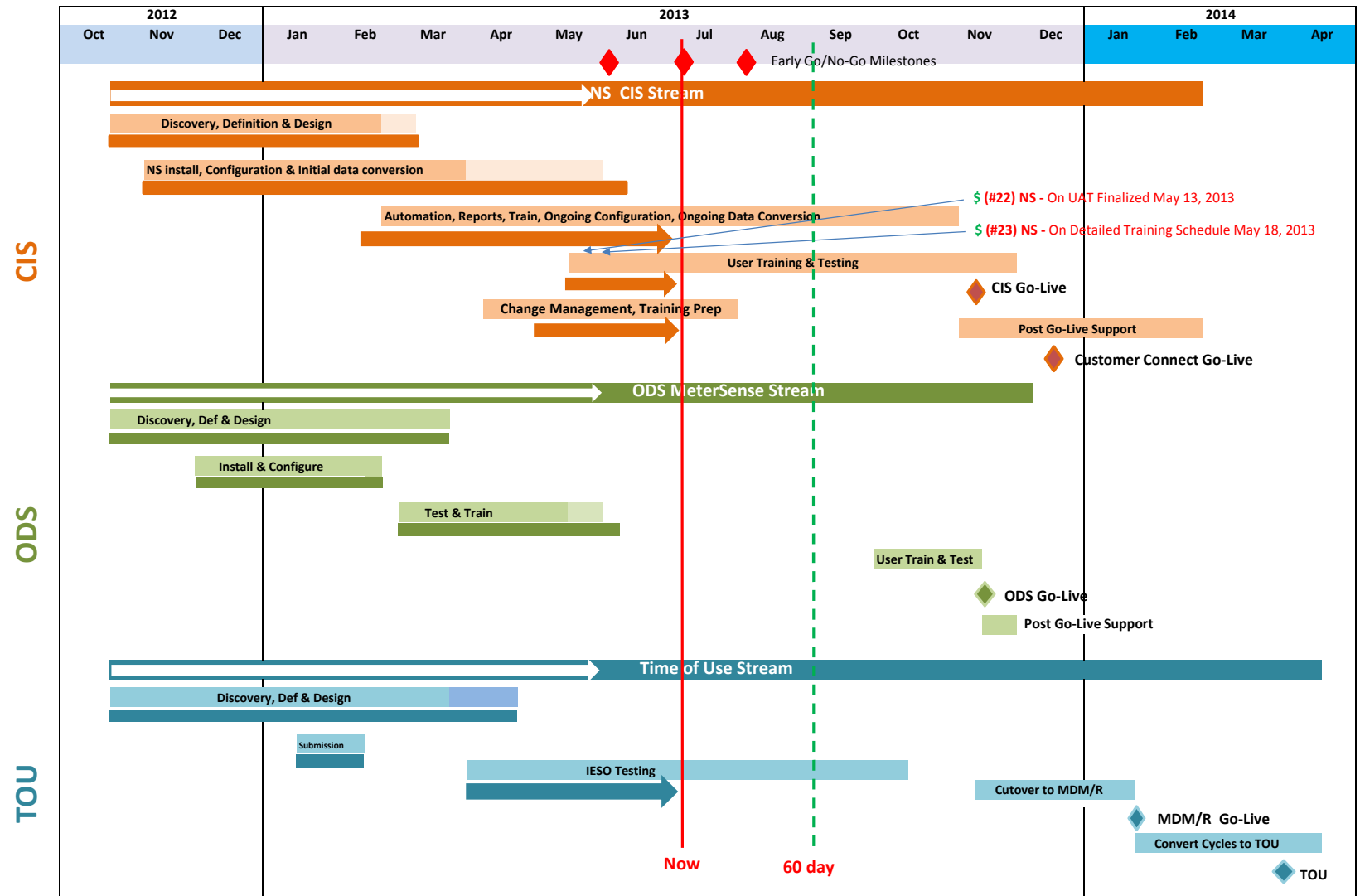
EnWin expects to meet the requirement to apply TOU pricing under the Standard Supply Service Code to all of its customers by April 30, 2014 as approved in application EB-2012-0405

Declaration: I confirm that the information contained in this report is true, accurate, and complete.

IMPORTANT: Choose Yes to submit this filing. Otherwise the form will be saved but not submitted.

* Submit Form

No



EnWin EnStar Project Plan - July 5, 2013

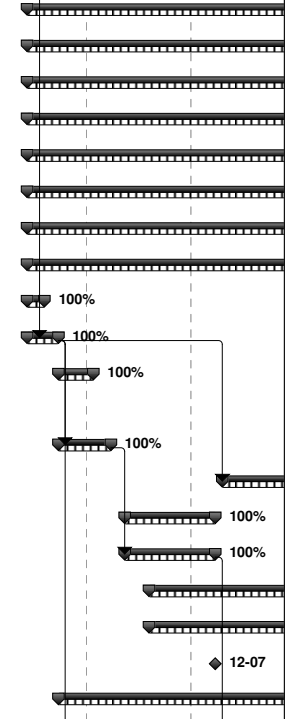
ID	% Complete	% Work Complete	Task Name	Start	Finish	Work	Duration	Predecessors	Resource Names	er	October	November	December			
1	59%	52%	Draft EnWin NorthStar Implementation Project Plan	Mon 12-10-15	Wed 14-04-02	35,794.18 hrs	73.2 wks?			09-22	10-06	10-20	11-03	11-17	12-01	12-15
2																
3	100%	100%	START DATE (Tentative - Would need to be confirmed and reviewed at	Mon 12-10-15	Mon 12-10-15	0 hrs	0 wks									
4	0%	0%	Milestone Validation section	Wed 13-09-04	Thu 13-11-14	0 hrs	10.05 wks									
5	0%	0%	CIS Accepted Solution (fixed)	Wed 13-09-04	Wed 13-09-04	0 hrs	0 wks									
6	0%	0%	CIS Accepted Solution tracked	Wed 13-09-04	Wed 13-09-04	0 hrs	0 wks	381								
7	0%	0%	CIS Go-Live (Fixed)	Mon 13-11-11	Mon 13-11-11	0 hrs	0 wks									
8	0%	0%	CIS Go-Live tracked	Mon 13-11-11	Mon 13-11-11	0 hrs	0 wks	438								
9	0%	0%	ERTH QT Complete (Fixed)	Mon 13-10-21	Mon 13-10-21	0 hrs	0 wks									
10	0%	0%	ERTH QT Complete tracked	Mon 13-10-21	Mon 13-10-21	0 hrs	0 wks	607								
11	0%	0%	MS Solution Live (fixed)	Thu 13-11-14	Thu 13-11-14	0 hrs	0 wks									
12	0%	0%	MS Solution Live tracked	Thu 13-11-14	Thu 13-11-14	0 hrs	0 wks	783								
13																
14	58%	49%	CIS Project	Mon 12-10-15	Mon 14-03-24	24,561.67 hrs	71.7 wks									
15	51%	51%	Project Management	Mon 12-10-15	Tue 14-03-11	4,792.13 hrs	70 wks									
16	51%	50%	Project Management / Technical Oversight / IT Environment S	Mon 12-10-15	Tue 14-03-11	4,041.13 hrs	70 wks									
20	50%	50%	Communication Management	Mon 12-10-15	Tue 14-03-11	532 hrs	70 wks									
25	51%	54%	Risk Management	Mon 12-10-15	Tue 14-02-04	37 hrs	65 wks									
28	100%	100%	Project Plan	Mon 12-10-15	Fri 12-11-16	96 hrs	5 wks									
33	69%	42%	Deliverable/Acceptance Management	Mon 12-11-19	Tue 13-01-22	86 hrs	8 wks									
39	94%	97%	Solution Definition Phase	Mon 12-10-15	Mon 13-04-15	2,822 hrs	24.6 wks									
40	100%	100%	Project Preparation	Mon 12-10-15	Fri 12-10-19	30 hrs	0.85 wks	3								
43	100%	100%	Project Kick-Off	Mon 12-10-15	Tue 12-10-23	124 hrs	1.4 wks									
47	100%	100%	NorthStar Product Orientation Session - Training	Mon 12-10-15	Thu 12-10-25	161 hrs	1.8 wks									
51	100%	100%	Discovery	Mon 12-10-15	Wed 12-11-07	1,038 hrs	3.6 wks	3								
59	94%	97%	CIS Definition	Thu 12-11-08	Fri 13-02-01	1,150 hrs	11 wks									
102	84%	83%	Customer Connect Definition	Mon 13-02-04	Mon 13-04-15	319 hrs	10 wks									
112	0%	0%	NS - Milestone - CustomerConnect requirements document finali	Mon 13-04-15	Mon 13-04-15	0 hrs	0 wks	111								
113	0%	0%	NS - Invoice Milestone - Sign off on Requirements Documents	Fri 13-01-04	Fri 13-01-04	0 hrs	0 wks	88,81,75,68								
114	100%	100%	Solution Design Phase	Mon 12-10-15	Fri 13-02-22	739.93 hrs	17.3 wks									
115	100%	100%	CIS Design	Mon 12-10-15	Fri 13-02-15	739.93 hrs	16.6 wks									
161	100%	100%	NS - Milestone - Solution Design Complete	Fri 13-02-22	Fri 13-02-22	0 hrs	0 wks	115,107								
162	87%	92%	Solution Configuration and Construction Phase	Mon 12-11-05	Wed 13-06-19	6,232.52 hrs	30.8 wks									
163	87%	92%	CIS Configuration and Construction	Mon 12-11-05	Wed 13-06-19	6,232.52 hrs	30.8 wks									
291	13%	6%	Solution Validation Phase	Thu 13-05-23	Wed 13-09-04	7,883.73 hrs	14.35 wks									
292	13%	6%	CIS Validation	Thu 13-05-23	Wed 13-09-04	7,883.73 hrs	14.35 wks									
383	0%	0%	Solution Transition Readiness Phase	Tue 13-08-20	Thu 13-11-07	876 hrs	11 wks									

EnWin EnStar Project Plan - July 5, 2013

ID	% Complete	% Work Complete	Task Name	Start	Finish	Work	Duration	Predecessors	Resource Names	er	October	November	December			
384	0%	0%	CIS Transition Readiness	Tue 13-08-20	Thu 13-11-07	876 hrs	11 wks			09-22	10-06	10-20	11-03	11-17	12-01	12-15
418	0%	0%	CIS Solution Go-Live Phase	Mon 12-10-15	Mon 14-03-24	1,215.37 hrs	71.7 wks									
419	0%	0%	CIS Go-Live	Thu 13-10-24	Thu 13-12-12	605 hrs	6.9 wks									
445	0%	0%	Post-Go-Live	Mon 12-10-15	Mon 14-03-24	610.37 hrs	71.7 wks									
458	0%	0%	NS - NorthStar CIS Project Implementation End Date	Mon 14-03-24	Mon 14-03-24	0 hrs	0 wks	418								
459																
460																
461	49%	38%	MDM/R Project	Mon 12-10-15	Wed 14-04-02	6,151.23 hrs	73.2 wks?									
462	51%	55%	Project Management	Mon 12-10-15	Tue 14-03-11	739.4 hrs	70 wks									
463	50%	50%	Project Management	Mon 12-10-15	Tue 14-03-11	560 hrs	70 wks									
466	50%	50%	Communication Management	Mon 12-10-15	Tue 14-03-11	70 hrs	70 wks									
469	50%	50%	Risk Management	Mon 12-10-15	Tue 14-03-11	35 hrs	70 wks									
471	100%	100%	IESO Project Plan	Mon 12-11-26	Wed 13-01-16	65.4 hrs	6.2 wks									
477	100%	100%	Initial MDM/R Registration Activities	Wed 13-01-16	Tue 13-01-22	4 hrs	1 wk									
485	67%	40%	Ongoing MDM/R Registration Activities	Tue 13-01-22	Tue 13-10-29	5 hrs	38.95 wks									
496	100%	100%	Solution Definition Phase	Mon 12-10-15	Tue 12-11-13	313 hrs	4.4 wks									
497	100%	100%	Project Kick-Off	Mon 12-10-15	Tue 12-10-23	53 hrs	1.4 wks									
500	100%	100%	Discovery	Wed 12-10-24	Tue 12-11-13	260 hrs	3 wks									
506	86%	99%	Solution Design Phase	Wed 13-01-09	Mon 13-06-10	649.97 hrs	21.4 wks									
507	100%	100%	Business Process Changes Review	Wed 13-02-13	Tue 13-03-26	390 hrs	5.6 wks									
514	100%	100%	ER - Milestone - Business Process Changes Completed	Tue 13-03-26	Tue 13-03-26	0 hrs	0 days	513								
515	100%	100%	CIS Design Document	Tue 13-03-26	Fri 13-03-29	24 hrs	0.6 wks	514								
517	80%	99%	Unit Test Planning	Wed 13-01-09	Wed 13-02-13	67.97 hrs	5.2 wks	178FS-5 wks								
525	100%	100%	Cutover Planning	Thu 13-02-07	Mon 13-03-25	86 hrs	6.4 wks									
532	60%	100%	Staff Training	Mon 13-05-06	Mon 13-06-10	82 hrs	5 wks	517,755								
540	100%	100%	Solution Construction Phase	Fri 12-12-21	Mon 13-06-10	108 hrs	22.6 wks									
541	100%	100%	CIS Implementation	Wed 13-03-13	Fri 13-04-05	48 hrs	3.4 wks	185,166,171								
545	100%	100%	Metersense Implementation	Thu 13-03-28	Wed 13-04-03	24 hrs	1 wk	185,166,171								
547	100%	100%	mCARE Implementation	Wed 13-04-03	Mon 13-06-10	0 hrs	9.4 wks	185,166,171								
550	100%	100%	AS2 Server Configuration	Fri 12-12-21	Thu 13-03-14	36 hrs	10.4 wks									
556	100%	100%	ER - Milestone - Completed All System Installations and Configur	Thu 13-03-21	Thu 13-03-21	0 hrs	0 days	541,555								
557	50%	31%	Solution Validation Phase	Thu 13-04-04	Mon 13-09-09	2,755.5 hrs	21.8 wks?									
558	50%	31%	Unit Testing with IESO	Thu 13-04-04	Fri 13-08-30	2,755.5 hrs	20.8 wks?									
591	0%	0%	ER - Milestone - Unit Testing Completed	Fri 13-08-30	Fri 13-08-30	0 hrs	0 days	590								
592	0%	0%	MDM/R Checkpoint - Unit Testing Completed	Fri 13-08-30	Fri 13-08-30	0 hrs	0 days									
593	0%	0%	ER - Deliverable - MDM/R Unit Testing Results	Mon 13-09-09	Mon 13-09-09	0 hrs	0 wks	591FS+1 wk								

EnWin EnStar Project Plan - July 5, 2013

ID	% Complete	% Work Complete	Task Name	Start	Finish	Work	Duration	Predecessors	Resource Names	er	October	November	December			
594	0%	0%	Solution Transition Readiness	Wed 13-09-04	Mon 13-10-21	1,193.38 hrs	6.4 wks	591		09-22	10-06	10-20	11-03	11-17	12-01	12-15
595	0%	0%	MDMR Enrolment - SIT	Wed 13-09-04	Fri 13-09-20	505.83 hrs	2.42 wks	589FS-3 wks								
602	0%	0%	MDMR Enrolment - QT	Fri 13-09-20	Mon 13-10-21	687.55 hrs	4 wks	598								
610	0%	0%	Solution Go-Live	Mon 13-11-11	Mon 13-12-02	136 hrs	3 wks									
611	0%	0%	MDMR Enrolment - Cutover	Mon 13-11-11	Mon 13-12-02	136 hrs	3 wks	435,609FS+10 days								
616	0%	0%	Post Implementation Support	Mon 14-01-06	Wed 14-04-02	256 hrs	12.6 wks									
617	0%	0%	ER - Periodic Billing with MDM/R	Mon 14-01-06	Tue 14-03-04	0 hrs	42 days									
618	0%	0%	ER - OnSite Support for Transition to MDM/R Billing	Mon 14-01-06	Fri 14-01-24	120 hrs	3 wks		ERTH BA							
619	0%	0%	ER - Milestone - MDMR Periodic Billing Cutover	Mon 14-01-06	Mon 14-01-06	0 hrs	0 days	618SS								
620	0%	0%	ER - Bill Pilot Cycles on TOU	Mon 14-02-03	Mon 14-02-03	16 hrs	1 day	619Sharon Fedak,EW Tester1 - Meter Reading								
621	0%	0%	ER -VEE Service Change on Remaining Cycles	Tue 14-03-04	Tue 14-03-04	0 hrs	1 day	620								
622	0%	0%	ER - Bill on TOU	Wed 14-03-05	Tue 14-04-01	0 hrs	20 days	621								
623	0%	0%	ER - Invoice Milestone - Transition to TOU Billing	Wed 14-04-02	Wed 14-04-02	0 hrs	0 wks	622FS+1 day								
624	0%	0%	ER - Onsite Support for Transition to TOU	Wed 14-03-05	Tue 14-03-25	120 hrs	3 wks	617,620	ERTH BA							
625	0%	0%	ER - Post Cutover Activities Completed	Tue 14-04-01	Tue 14-04-01	0 hrs	0 days	624,622								
626																
627																
628	67%	85%	MeterSense Project - ENWIN	Mon 12-10-15	Mon 14-01-06	5,081.28 hrs	60.8 wks									
629	60%	62%	Project Management	Mon 12-10-15	Mon 14-01-06	996 hrs	60.8 wks									
630	58%	58%	Project Management / Technical Oversight	Mon 12-10-15	Mon 13-12-30	350 hrs	60 wks									
633	58%	58%	Communication Management	Mon 12-10-15	Mon 14-01-06	432 hrs	60.8 wks									
638	58%	58%	Scope Management	Mon 12-10-15	Mon 13-12-30	60 hrs	60 wks									
640	64%	70%	Risk Management	Mon 12-10-15	Wed 13-11-20	82 hrs	55 wks									
643	100%	100%	Project Plan	Mon 12-10-15	Wed 13-02-20	72 hrs	17 wks									
648	100%	100%	NorthStar MeterSense Solution Definition Phase	Mon 12-10-15	Tue 13-02-05	832.27 hrs	15 wks									
649	100%	100%	Project Preparation	Mon 12-10-15	Fri 12-10-19	36 hrs	1 wk									
652	100%	100%	Project Kick-Off	Mon 12-10-15	Tue 12-10-23	63 hrs	1.4 wks	3								
656	100%	100%	NorthStar MeterSense Product Orientation Session - Training	Wed 12-10-24	Fri 12-11-02	24.8 hrs	1.6 wks									
660	100%	100%	Discovery	Wed 12-10-24	Wed 12-11-07	213.47 hrs	2.2 wks	652								
666	100%	100%	Physical Architecture Review / Recommendation	Mon 12-12-10	Tue 13-01-22	71.48 hrs	5 wks	652								
670	100%	100%	Solution Requirements Documents	Mon 12-11-12	Fri 12-12-07	141.35 hrs	4 wks									
676	100%	100%	Integration Requirements Document	Mon 12-11-12	Fri 12-12-07	82.32 hrs	4 wks	660								
682	100%	100%	Training / Change Management Plan	Mon 12-11-19	Tue 13-02-05	92.27 hrs	10 wks									
688	100%	100%	Test Plan	Mon 12-11-19	Tue 13-02-05	107.57 hrs	10 wks									
694	100%	100%	MS - Invoice Milestone - Sign off on Solutions Requirements Docu	Fri 12-12-07	Fri 12-12-07	0 hrs	0 wks	675								
695	100%	100%	MeterSense Solution Design Phase	Wed 12-10-24	Wed 13-02-27	483.38 hrs	16.6 wks									



EnWin EnStar Project Plan - July 5, 2013

ID	% Complete	% Work Complete	Task Name	Start	Finish	Work	Duration	Predecessors	Resource Names	er	October	November	December
696	100%	100%	Integration Design Document Document	Mon 12-12-10	Wed 13-02-20	216 hrs	9 wks	676			09-22	10-06	10-20
700	100%	100%	Test Cases / Scenarios Document	Wed 13-02-06	Wed 13-02-27	63.38 hrs	3 wks					11-03	11-17
704	100%	100%	NorthStar MeterSense Base Solution Installation and Configuration	Wed 12-10-24	Fri 12-12-14	204 hrs	7.6 wks	652					12-01
711	100%	100%	MeterSense Configuration and Construction Phase	Wed 13-01-02	Tue 13-04-30	699.5 hrs	16.8 wks						12-15
712	100%	100%	Configuration and Construction	Wed 13-01-02	Tue 13-03-26	540 hrs	11.8 wks						
728	100%	100%	Milestone - Solution Feature Complete	Tue 13-03-26	Tue 13-03-26	0 hrs	0 wks	725					
729	100%	100%	User Acceptance Testing Detailed Plan Document	Wed 13-03-27	Tue 13-04-30	140 hrs	5 wks	695FS-1 wk					
735	100%	100%	Training Detailed Schedule	Thu 13-02-28	Wed 13-03-27	19.5 hrs	4 wks						
739	98%	96%	MeterSense Solution Validation Phase	Wed 13-02-27	Fri 13-05-17	1,684.13 hrs	11.6 wks						
740	100%	100%	Testing Environment	Wed 13-02-27	Tue 13-03-26	80 hrs	4 wks						
742	100%	100%	Functional Testing	Wed 13-03-27	Tue 13-04-16	601.37 hrs	3 wks						
746	100%	100%	Integration Testing	Wed 13-04-17	Tue 13-04-30	263.97 hrs	2 wks	742					
751	85%	80%	Training	Mon 13-04-22	Fri 13-05-03	330.8 hrs	2 wks	746FS-2 wks					
758	98%	98%	User Acceptance Testing	Mon 13-05-06	Fri 13-05-17	408 hrs	2 wks	742,746,755					
763	0%	0%	MS - Deliverable - Accepted Solution	Fri 13-05-17	Fri 13-05-17	0 hrs	0 wks	742,746,751,761					
764	0%	0%	1.5 Years of Historical Data Loading	Mon 13-06-17	Mon 13-10-28	82 hrs	18.4 wks						
765	0%	0%	MS - Finalize Timing of Data Load	Mon 13-06-17	Mon 13-06-17	2 hrs	1 day		MS - Project Manager				
766	0%	0%	MS - Schedule and execute data archiving and restore testing	Tue 13-06-18	Tue 13-07-09	20 hrs	3 wks	765					
767	0%	0%	MS - Assemble Historical Sensus and MV90 Data	Fri 13-08-16	Fri 13-09-13	0 hrs	4 wks	768SS-4 wks					
768	0%	0%	MS - Load and Validate Data	Mon 13-09-16	Mon 13-10-28	60 hrs	6 wks		MS - Technical Consultant[25%]				
769	53%	25%	MeterSense Solution Production Environment Phase	Fri 13-02-01	Thu 13-11-28	304 hrs	41.75 wks						
770	89%	76%	Production Environment	Fri 13-02-01	Thu 13-10-24	100 hrs	36.75 wks						
775	0%	0%	Business Process Training (prior to Live)	Thu 13-10-17	Thu 13-11-07	112 hrs	3 wks						
779	0%	0%	Production Environment Release	Thu 13-11-07	Thu 13-11-14	32 hrs	1 wk						
784	0%	0%	Post-Production Environment - Enhanced Support	Thu 13-11-14	Thu 13-11-28	60 hrs	2 wks	779					
786	0%	0%	MS - Milestone - MeterSense Project Completed	Thu 13-11-28	Thu 13-11-28	0 hrs	0 wks	784					
787	0%	0%	Milestone - Final Acceptance of Project Closeout	Tue 14-04-01	Tue 14-04-01	0 hrs	0 wks	458,625,769					
788													
789													
790	18%	22%	EnWin Project Tasks	Mon 12-10-15	Wed 14-05-21	2,551.5 hrs	80.2 wks?						
791	31%	30%	Document Review and Solution Requirements	Mon 12-10-15	Mon 13-05-20	334 hrs	29.6 wks?						
792	100%	100%	EW - Schedule Team to Review	Mon 13-01-14	Mon 13-01-14	2 hrs	1 day		re,EW Business Process Lead - PDD[25%]				
793	100%	100%	EW - Forward Updates	Tue 13-01-15	Tue 13-01-15	2 hrs	1 day	792	re,EW Business Process Lead - PDD[25%]				
794	100%	100%	Solution Requirements and customization Docs Sign-off	Fri 13-01-25	Fri 13-01-25	2 hrs	0.2 wks						
795	100%	100%	EW - Add to solution folder and let PM know	Fri 13-01-25	Fri 13-01-25	2 hrs	1 day		Lead Business Consultant - Gabe D'Amore				
796	100%	100%	Review Integration Requirements Document	Fri 13-01-18	Mon 13-01-21	20 hrs	0.4 wks		EW Business Process Lead - PDD				

EnWin EnStar Project Plan - July 5, 2013

ID	% Complete	% Work Complete	Task Name	Start	Finish	Work	Duration	Predecessors	Resource Names	er	October	November	December			
797	100%	100%	EW - Schedule Team to Review	Fri 13-01-18	Fri 13-01-18	2 hrs	1 day		Business Consultant - Gabe D'Amore[25%]	09-22	10-06	10-20	11-03	11-17	12-01	12-15
798	100%	100%	EW - Forward Updates	Mon 13-01-21	Mon 13-01-21	2 hrs	1 day	797	Business Consultant - Gabe D'Amore[25%]							
799	98%	98%	Review Test Plan Document	Mon 13-01-21	Fri 13-01-25	36 hrs	1 wk									
800	100%	100%	EW - Train Core Team on Testing Methodology	Mon 13-01-21	Mon 13-01-21	8 hrs	1 day		EW CIS DM/ODS - Nicole Richardson[50%]							
801	100%	100%	EW - Review eSupport Process	Tue 13-01-22	Tue 13-01-22	4 hrs	1 day	800	usiness Consultant,NS - Quality Assurance							
802	100%	100%	EW - Team to draft lists of test scenarios by area	Wed 13-01-23	Thu 13-01-24	16 hrs	2 days	801	ODS - Nicole Richardson,EW CIS MR - Al..							
803	90%	90%	EW - Review Test Scenarios List Created by Team	Fri 13-01-25	Fri 13-01-25	8 hrs	1 day	802	EW Test Lead Gabe D'Amore[88%]							
804	20%	30%	Customer Connect Definition/Requirements Review	Mon 12-10-15	Tue 13-02-19	12 hrs	16.8 wks?									
805	50%	89%	EW - Review List of Customer connect services with team	Tue 13-02-12	Wed 13-02-13	4 hrs	2 days		Katie Janisse[17%],EW CIS DM/ODS - N...							
806	0%	0%	EW - Review and confirm Test Plan	Fri 13-02-15	Fri 13-02-15	4 hrs	1 day	805%	EW Business Process Lead - PDD[50%]							
807	0%	0%	EW - Team to draft list of test scenarios, review and update	Tue 13-02-19	Tue 13-02-19	4 hrs	1 day	806	Business Consultant - Gabe D'Amore[50%]							
808	0%	0%		Mon 12-10-15	Mon 12-10-15	0 hrs	0.2 wks?									
809	20%	30%	mCare Definition/Requirements Review	Mon 12-10-15	Tue 13-02-19	12 hrs	16.8 wks?									
810	50%	89%	EW - Review List of mCare services with team	Tue 13-02-12	Wed 13-02-13	4 hrs	2 days		Katie Janisse[17%],EW CIS DM/ODS - N...							
811	0%	0%	EW - Review and confirm Test Plan	Fri 13-02-15	Fri 13-02-15	4 hrs	1 day	810%	EW Business Process Lead - PDD[50%]							
812	0%	0%	EW - Team to draft list of test scenarios, review and update	Tue 13-02-19	Tue 13-02-19	4 hrs	1 day	811	Business Consultant - Gabe D'Amore[50%]							
813	0%	0%		Mon 12-10-15	Mon 12-10-15	0 hrs	0.2 wks?									
814	25%	30%	EIS Definition/Requirements Review	Tue 13-02-12	Tue 13-02-19	12 hrs	1 wk									
815	50%	89%	EW - Review List of EIS functionality with team	Tue 13-02-12	Wed 13-02-13	4 hrs	2 days		Katie Janisse[17%],EW CIS DM/ODS - N...							
816	0%	0%	EW - Review and confirm Test Plan	Fri 13-02-15	Fri 13-02-15	4 hrs	1 day	815%	EW Business Process Lead - PDD[50%]							
817	0%	0%	EW - Team to draft list of test scenarios, review and update	Tue 13-02-19	Tue 13-02-19	4 hrs	1 day	816	Business Consultant - Gabe D'Amore[50%]							
818																
819																
820	99%	100%	Review Integration design Document	Tue 13-02-12	Mon 13-03-25	4 hrs	5.8 wks?									
821	0%	0%	Review Integration design Document	Tue 13-02-12	Tue 13-02-12	0 hrs	0 wks?									
822	0%	0%	Review Integration design Document	Mon 13-03-25	Mon 13-03-25	0 hrs	0 wks?									
823	100%	100%	EW - Ensure team is scheduled, gather supporting docs	Thu 13-03-21	Mon 13-03-25	4 hrs	3 days		[8%],EW IT ODS / DM - Sharon Fedak[8%]							
824	80%	75%	Review Reports Design Document	Mon 13-01-28	Mon 13-02-11	16 hrs	2.2 wks									
825	100%	100%	EW - Create sublist of existing PS reports per SME, ensure SME	Mon 13-01-28	Tue 13-01-29	4 hrs	2 days		EW Test Lead Gabe D'Amore[25%]							
826	100%	100%	EW - Team to gather supporting docs and existing reports	Wed 13-02-06	Thu 13-02-07	8 hrs	2 days	825	EW IT Reporting - Marilee Quinlan							
827	0%	0%	EW - Team to confirm with end users	Mon 13-02-11	Mon 13-02-11	4 hrs	1 day	826	Katie Janisse[50%],EW CIS DM/ODS - N...							
828	0%	0%	Review Customizations development and design document	Mon 12-10-15	Fri 13-01-11	12 hrs	11.6 wks?									
829	0%	0%	EW - Ensure team is scheduled and mods assigned to individuals,	Wed 13-01-09	Fri 13-01-11	12 hrs	3 days		j - Charlene Spadotto[33%],EW Lead Bus...							
830	0%	0%	1.5 Years of Historical Data Loading	Mon 12-10-15	Mon 12-10-15	0 hrs	0.2 wks?									
833	0%	0%	CT/PT Screen Changes	Mon 12-10-15	Mon 12-10-15	0 hrs	0.2 wks?									
836	0%	0%	Drawing Number Inclusions	Mon 12-10-15	Mon 12-10-15	0 hrs	0.2 wks?									
839	0%	0%	Orphaned Meter Report	Mon 12-10-15	Mon 12-10-15	0 hrs	0.2 wks?									

EnWin EnStar Project Plan - July 5, 2013

ID	% Complete	% Work Complete	Task Name	Start	Finish	Work	Duration	Predecessors	Resource Names	er	October	November	December			
842	0%	0%	Configure and setup mCARE - Business Process Discussion wit	Tue 13-03-19	Tue 13-03-19	8 hrs	0.2 wks			09-22	10-06	10-20	11-03	11-17	12-01	12-15
843	0%	0%	EW - List existing service orders, and ensure all existing service o	Tue 13-03-19	Tue 13-03-19	8 hrs	1 day		son[50%],EW CIS MR - Alicia Novak[50%]							
844	0%	0%	Configure and Setup EIS	Fri 13-03-01	Tue 13-03-05	8 hrs	0.6 wks									
845	0%	0%	EW - Discuss & list business processes, list users	Fri 13-03-01	Tue 13-03-05	8 hrs	3 days		EW Training - Jan Winters							
846	0%	0%	Go-Live Approach Document	Fri 13-04-19	Mon 13-05-20	176 hrs	4.4 wks									
847	0%	0%	EW - Draft Enwin Go-Live Approach Doc (hi level)	Fri 13-04-19	Mon 13-05-20	176 hrs	4.4 wks		EW IT Conversion - Christine Hales							
848	100%	100%	Meter to Transformer Relationships	Fri 13-03-01	Fri 13-03-01	8 hrs	0.2 wks									
849	100%	100%	EW - Create flat file from Maximo	Fri 13-03-01	Fri 13-03-01	8 hrs	1 day		EW IT - Marc Ethier							
850	100%	100%	Water Service Shut Off data	Fri 13-03-01	Fri 13-03-01	4 hrs	0.2 wks?									
851	100%	100%	EW - Data conversion from Legacy	Fri 13-03-01	Fri 13-03-01	4 hrs	0.2 wks?		EW IT - Marc Ethier[50%]							
852	27%	31%	IT Preparations for NS Support	Mon 13-01-14	Mon 13-11-04	32 hrs	41 wks									
853	100%	100%	Add-on server installation for CustConnect, EIS, mCare	Mon 13-01-14	Fri 13-02-15	10 hrs	5 wks									
854	100%	100%	EW - Ordering HW for Phys Arch Integration	Mon 13-01-14	Fri 13-01-25	2 hrs	2 wks		EW Technical Lead - Kevin Baker[3%]							
855	100%	100%	EW - Install Physical HW for Add on servers	Mon 13-02-11	Fri 13-02-15	8 hrs	1 wk		EW Technical Lead - Kevin Baker[20%]							
856	0%	0%	iPad training for field personell	Mon 13-09-23	Mon 13-11-04	22 hrs	6 wks									
857	0%	0%	EW - Setup 5-systems in training room for training prep,	Mon 13-09-30	Mon 13-10-14	4 hrs	2 wks		EW Technical Lead - Kevin Baker[5%]							
858	0%	0%	EW - iPad ordering & availability for Aug 2013	Mon 13-09-23	Mon 13-10-14	6 hrs	3 wks		EW Technical Lead - Kevin Baker[5%]							
859	0%	0%	EW - Set-up all remaining systems required for training of field pe	Tue 13-10-15	Mon 13-11-04	12 hrs	3 wks	857,858	EW Technical Lead - Kevin Baker[10%]							
860	0%	0%	EW - Cancelling of ePost contract (reminder)	Mon 13-09-09	Fri 13-09-20	3.2 hrs	2 wks		2%],EW Business Process Lead - PDD[2%]							
861	32%	25%	Additional I.T. Tasks	Fri 13-02-01	Tue 13-09-24	1,552.5 hrs	32.6 wks									
862	100%	100%	EW - Data Conversion	Fri 13-02-01	Fri 13-03-29	192 hrs	8 wks		EW IT Conversion - Christine Hales[60%]							
863	5%	5%	EW - Data Conversion	Tue 13-04-02	Fri 13-08-30	418 hrs	21.2 wks		IT Conversion - Michael Easterbrook[25%]							
864	100%	100%	EW - Cutover Strategy - MDMR	Fri 13-02-01	Fri 13-03-29	80 hrs	8 wks		EW IT Conversion - Christine Hales[25%]							
865	0%	0%	EW - Integration Validation - Pework	Tue 13-04-02	Tue 13-04-30	66 hrs	4.2 wks		ak[25%],EW Security - Jackie Ribeiro[25%]							
866	20%	20%	EW - Bill Print Design Review - Pework	Tue 13-02-19	Tue 13-03-05	88 hrs	2.2 wks		EW IT Billing - Andy Knapp							
867	0%	0%	EW - Development effort required for reports to support Parallel Test	Tue 13-09-03	Tue 13-09-24	128 hrs	3.2 wks		0%],EW IT ODS / DM - Sharon Fedak[50%]							
868	20%	32%	EW - Integration CIS & Formscape (Bill Print)	Thu 13-05-23	Tue 13-07-23	140.5 hrs	8.4 wks		EW IT Billing - Andy Knapp[75%]							
869	20%	20%	EW - Integration NS-Maximo Interface	Fri 13-03-29	Wed 13-05-01	92 hrs	4.6 wks		s],EW IT Conversion - Christine Hales[25%]							
870	20%	20%	EW - NS CIS & Formscape (Bill Print)	Mon 13-06-10	Tue 13-06-18	48 hrs	1.2 wks		EW IT Billing - Andy Knapp							
871	0%	0%	EW - Ensure that converted Data is Auditable	Mon 13-06-03	Fri 13-06-21	300 hrs	3 wks		IT Conversion - Michael Easterbrook[50%]							
872																
873	14%	34%	Cut Over Planning & Preparation	Mon 13-03-04	Wed 14-05-21	130 hrs	61.8 wks									
874	100%	100%	Review EARTH Proposal	Mon 13-03-04	Fri 13-03-15	36 hrs	2 wks		s],EW Project Manager - Barry Leavitt[10%]							
875	100%	100%	NS Quote Change and Cutover Strategy	Mon 13-03-18	Fri 13-03-29	0 hrs	2 wks	874								
876	100%	100%	Sponsor recommendation and approval	Mon 13-04-01	Fri 13-04-12	4 hrs	2 wks	875	EW Project Manager - Barry Leavitt[20%]							
877	0%	0%	Assign cutover prime	Mon 13-04-15	Mon 13-04-15	2 hrs	0.1 wks	876	EW Project Manager - Barry Leavitt							
878	5%	5%	Cut over project management	Mon 13-04-15	Wed 14-05-21	88 hrs	55.8 wks	876	%],EW Project Manager - Barry Leavitt[1%]							

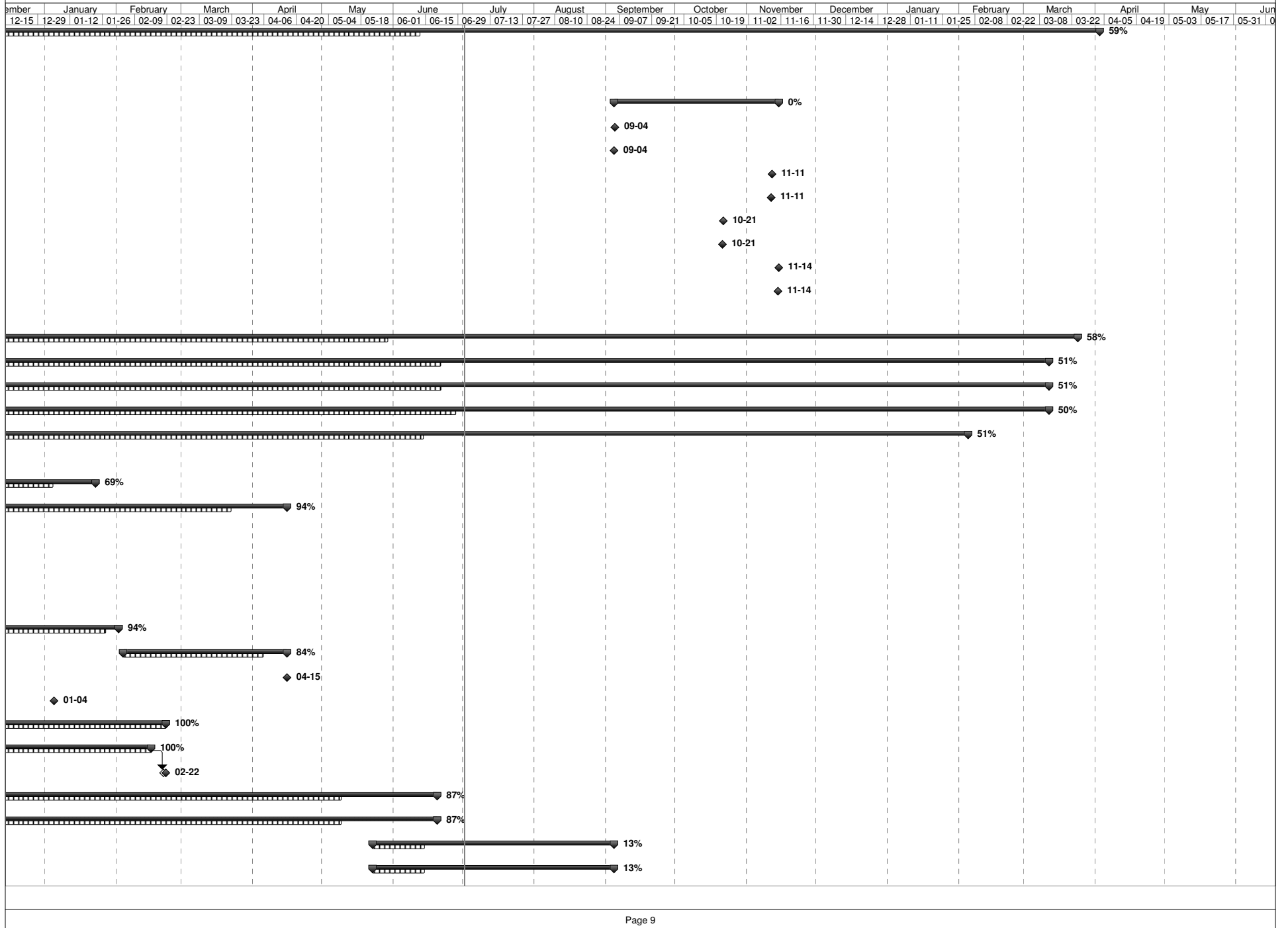
EnWin EnStar Project Plan - July 5, 2013

ID	% Complete	% Work Complete	Task Name	Start	Finish	Work	Duration	Predecessors	Resource Names	er	October	November	December			
879										09-22	10-06	10-20	11-03	11-17	12-01	12-15
880	5%	6%	Post Go Live Support	Tue 13-03-26	Wed 13-07-17	168 hrs	16 wks									
881	10%	10%	EW - Develop Strategy for Vendor Support	Tue 13-03-26	Mon 13-04-22	40 hrs	4 wks		- Barry Leavitt[5%],EW - Brigitte Rivest[5%]							
882	10%	10%	EW- Develop Strategy for IT Support	Tue 13-04-23	Mon 13-05-20	64 hrs	4 wks	881	aron Fedak[10%],EW - Brigitte Rivest[10%]							
883	0%	0%	EW - Develop Strategy for Parallel Testing Support	Wed 13-05-22	Tue 13-06-18	41.6 hrs	4 wks	882	Business Consultant - Gabe D'Amore[20%]							
884	0%	0%	EW - Develop Strategy for Super User Support	Wed 13-06-19	Wed 13-07-17	22.4 hrs	4 wks	883	%],EW Project Manager - Barry Leavitt[5%]							
885																
886	4%	0%	Communication Plan Strategy	Mon 13-03-25	Wed 14-04-30	76.8 hrs	55.8 wks?									
887	100%	100%	Selection	Mon 13-03-25	Thu 13-04-11	0 hrs	2.8 wks									
888	100%	100%	Selection of RFP Finalists	Mon 13-03-25	Fri 13-03-29	0 hrs	1 wk									
889	100%	100%	Set up and execution of Final Presentations by Proponents	Mon 13-04-01	Fri 13-04-05	0 hrs	1 wk	888								
890	100%	100%	Selection of Communication Company	Mon 13-04-08	Thu 13-04-11	0 hrs	0.8 wks	889								
891	75%	0%	Budget Approval by Board	Fri 13-04-12	Fri 13-04-19	0 hrs	1.2 wks									
892	100%	100%	Preperation of Recommendation Report for Board	Fri 13-04-12	Tue 13-04-16	0 hrs	0.6 wks	890								
893	0%	0%	Board Approval of Selected Proponent and Quote	Fri 13-04-19	Fri 13-04-19	0 hrs	1 day									
894	0%	0%	Weekly Update Meetings with Communication Partner	Fri 13-04-12	Wed 14-04-30	0 hrs	53 wks	890								
895	0%	0%	Scope, Strategy and Message Development	Fri 13-04-12	Mon 13-07-08	0 hrs	12 wks									
896	0%	0%	Initial Scope and Strategy Development Meeting	Fri 13-04-12	Thu 13-04-18	0 hrs	1 wk	890								
897	0%	0%	Strategy Development by 3rd Party	Fri 13-04-19	Fri 13-06-14	0 hrs	2 mons	896								
898	0%	0%	Message Development	Fri 13-04-12	Mon 13-07-08	0 hrs	3 mons	890								
899	0%	0%	Communication	Tue 13-04-30	Fri 13-11-29	76.8 hrs	29.6 wks?									
900	0%	0%	Customer account number change	Mon 13-07-29	Fri 13-08-30	76.8 hrs	4.8 wks		PM[10%],EW Proj Mgr - Joe Sarkis[10%]							
902	0%	0%	TOU and Customer Connect	Tue 13-07-09	Tue 13-07-09	0 hrs	0.2 wks?									
905	0%	0%	Bill Presentment and Rates	Tue 13-04-30	Fri 13-11-29	0 hrs	29.6 wks?									
916	0%	0%	WADU Message Communication	Tue 13-07-09	Tue 13-07-09	0 hrs	0.2 wks?	898								
917	0%	0%	CIS System Change Communication	Tue 13-07-09	Tue 13-07-09	0 hrs	0.2 wks?	898								
918																
919	0%	0%	Business Continuity	Wed 13-05-01	Mon 13-08-19	214 hrs	15.2 wks									
920	0%	0%	EW - Establish Impacted Systems	Wed 13-05-01	Fri 13-05-24	60 hrs	3.4 wks		%],EW Project Manager - Barry Leavitt[10%]							
921	0%	0%	EW - Develop Continuity Startegy	Mon 13-05-27	Thu 13-06-20	60 hrs	3.8 wks	920	%],EW Project Manager - Barry Leavitt[10%]							
922	0%	0%	EW - Approval of Business Continuity Strategy	Fri 13-06-21	Fri 13-07-12	60 hrs	3 wks	921	%],EW Project Manager - Barry Leavitt[10%]							
923	0%	0%	EW - Test Bus Cont Strategy	Tue 13-08-13	Mon 13-08-19	34 hrs	1 wk	922	%],EW Technical Lead - Kevin Baker[20%]							
924																
925	33%	20%	Business Process Development	Fri 13-02-01	Thu 13-09-05	41 hrs	30 wks?									
926	0%	0%	Business Process Development	Fri 13-02-01	Fri 13-02-01	0 hrs	0 wks?									
927	100%	100%	Review Current EnWin Business Processes	Fri 13-02-01	Fri 13-02-22	0 hrs	3 wks									
928	100%	100%	Review Of ERTH and NS business processes	Fri 13-02-08	Fri 13-04-05	0 hrs	8 wks									

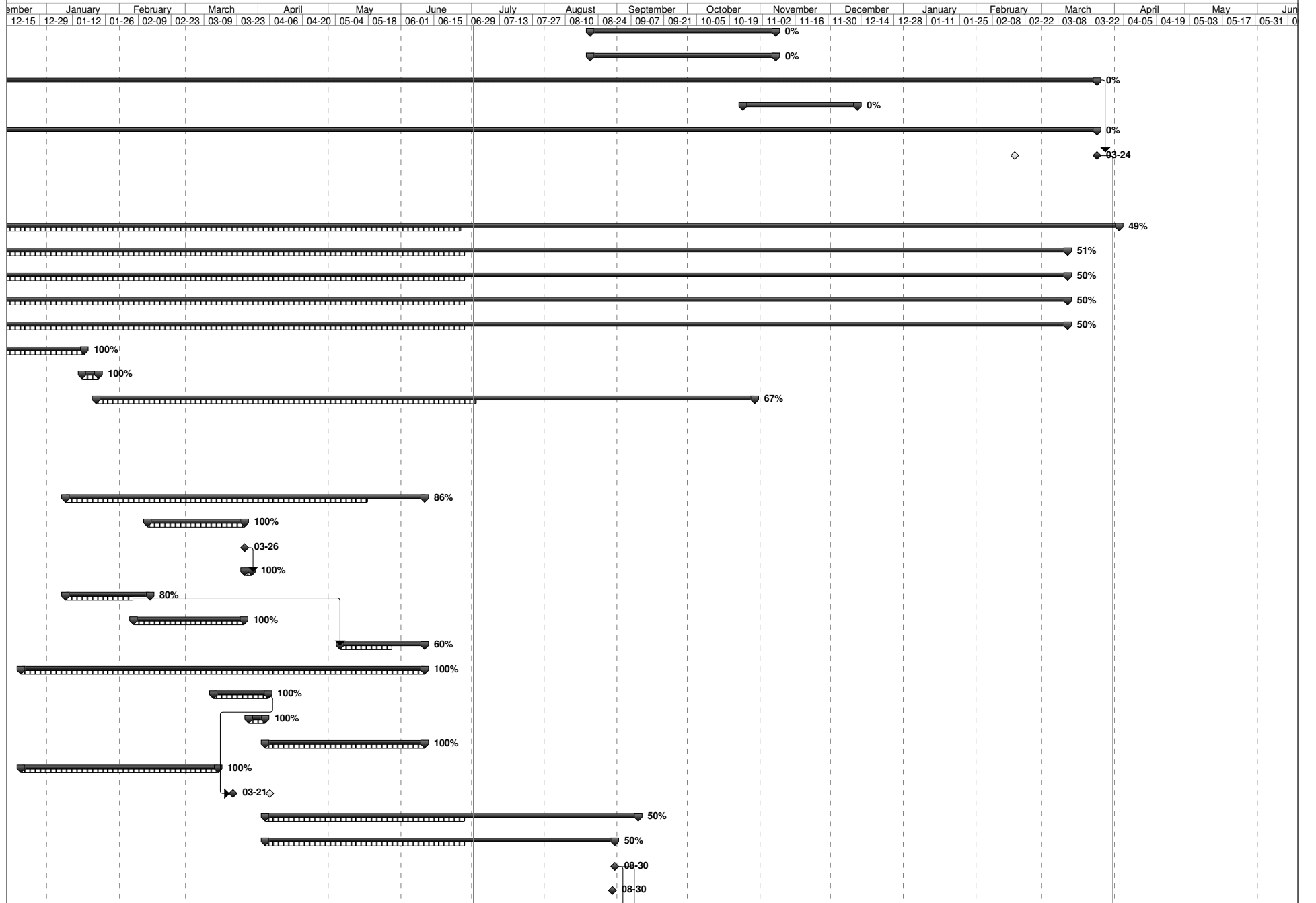
EnWin EnStar Project Plan - July 5, 2013

ID	% Complete	% Work Complete	Task Name	Start	Finish	Work	Duration	Predecessors	Resource Names	er	October	November	December
929	0%	0%	Formalize Integration of MS / CC / EIS / mCARE	Mon 13-04-01	Fri 13-04-05	0 hrs	1 wk			09-22	10-06 10-20	11-03 11-17	12-01 12-15
930	22%	20%	Gap Analysis	Fri 13-04-05	Thu 13-05-02	41 hrs	3.95 wks?						
931	0%	0%	Gap Analysis	Fri 13-04-05	Fri 13-04-05	0 hrs	0 wks?						
932	0%	0%	Gap Analysis	Thu 13-05-02	Thu 13-05-02	0 hrs	0 wks?						
933	22%	20%	CIS	Mon 13-04-08	Mon 13-04-29	41 hrs	3.2 wks						
940	0%	0%	Define Required Changes	Tue 13-04-30	Mon 13-05-13	0 hrs	2 wks						
941	0%	0%	Formalize "Training List" based on results of Gap Analysis	Tue 13-04-30	Thu 13-05-02	0 hrs	0.5 wks	933					
942	0%	0%	Incorporate MS / CC EIS into BP Mainstream	Thu 13-05-02	Thu 13-05-09	0 hrs	1 wk	941					
943	0%	0%	Preliminary Cost Assessment	Thu 13-05-09	Mon 13-05-13	0 hrs	0.5 wks	942					
944	0%	0%	Categorize Business Processes	Tue 13-05-14	Fri 13-05-17	0 hrs	0.8 wks						
945	0%	0%	Categorize Business Processes	Tue 13-05-14	Tue 13-05-14	0 hrs	1 day	940					
946	0%	0%	Develop Measurment Technique	Wed 13-05-15	Fri 13-05-17	0 hrs	3 days	945					
947	0%	0%	Socialize Changes With Decision Makers	Tue 13-05-14	Thu 13-05-16	0 hrs	3 days	940					
948	0%	0%	Redesign With Line Orgs.	Wed 13-05-08	Thu 13-07-04	0 hrs	8 wks?						
949	0%	0%	Redesign With Line Orgs.	Wed 13-05-08	Wed 13-05-08	0 hrs	0 wks?	947					
950	0%	0%	Formal Review of Business Process with Line Orgs.	Wed 13-05-08	Wed 13-05-22	0 hrs	2 wks	949					
951	0%	0%	Incorporate Feedback into BP	Thu 13-05-23	Wed 13-05-29	0 hrs	1 wk	950					
952	0%	0%	Get Sign Off of Final BP from Line Orgs.	Thu 13-05-30	Wed 13-06-05	0 hrs	1 wk	951					
953	0%	0%	Release BP to EARTH	Wed 13-06-05	Wed 13-06-05	0 hrs	0 wks	952					
954	0%	0%	Org. and Cost Impacts	Thu 13-06-06	Wed 13-06-12	0 hrs	1 wk	953					
955	0%	0%	Approval Org. Impacts from Exec. Comm.	Thu 13-06-13	Wed 13-06-26	0 hrs	2 wks	954					
956	0%	0%	Incorporate Exec. Comm. Input	Thu 13-06-27	Thu 13-07-04	0 hrs	1 wk	955					
957	0%	0%	Staff and Execute	Fri 13-07-05	Thu 13-09-05	0 hrs	8.6 wks	956					

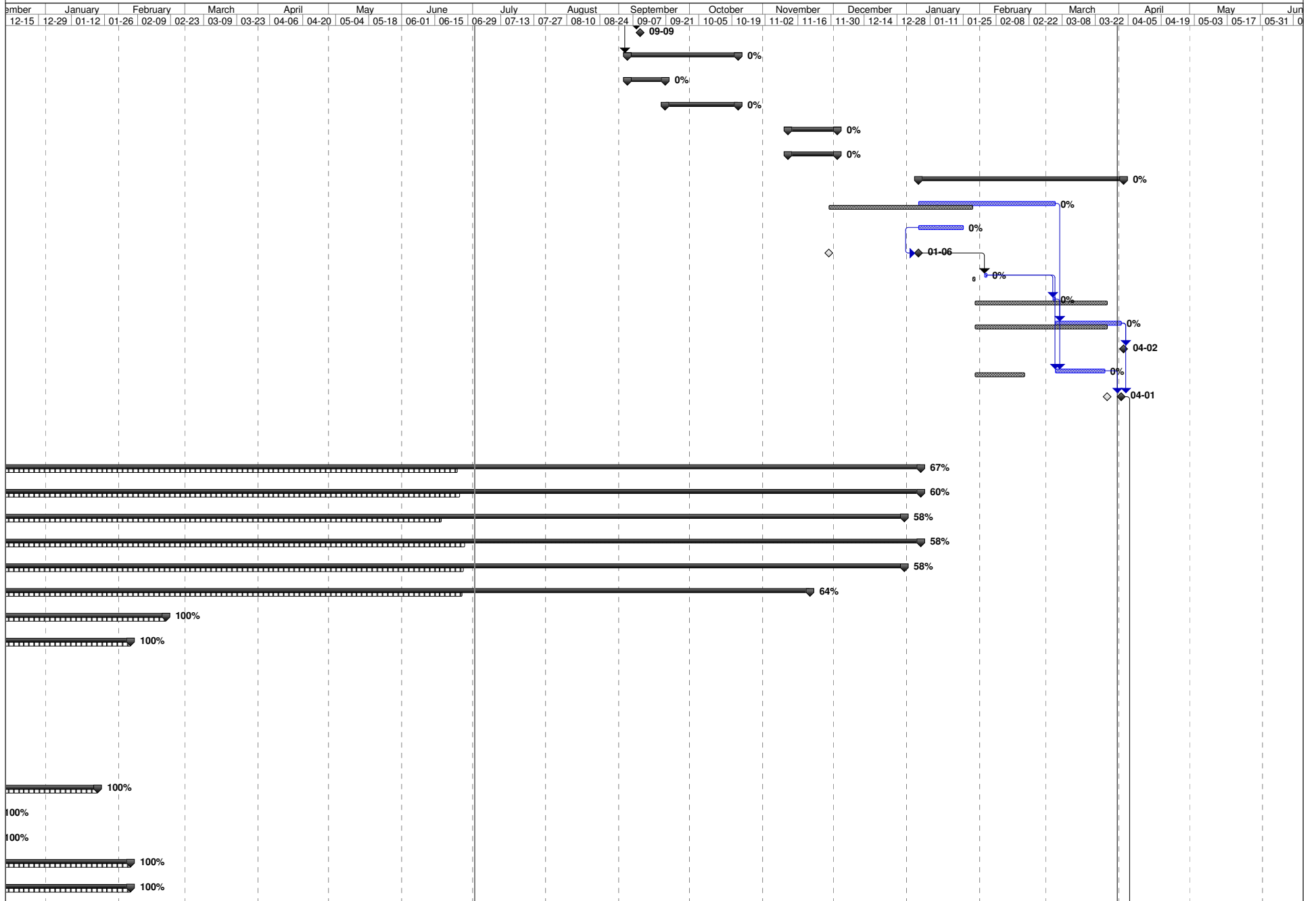
EnWin EnStar Project Plan - July 5, 2013



EnWin EnStar Project Plan - July 5, 2013



EnWin EnStar Project Plan - July 5, 2013

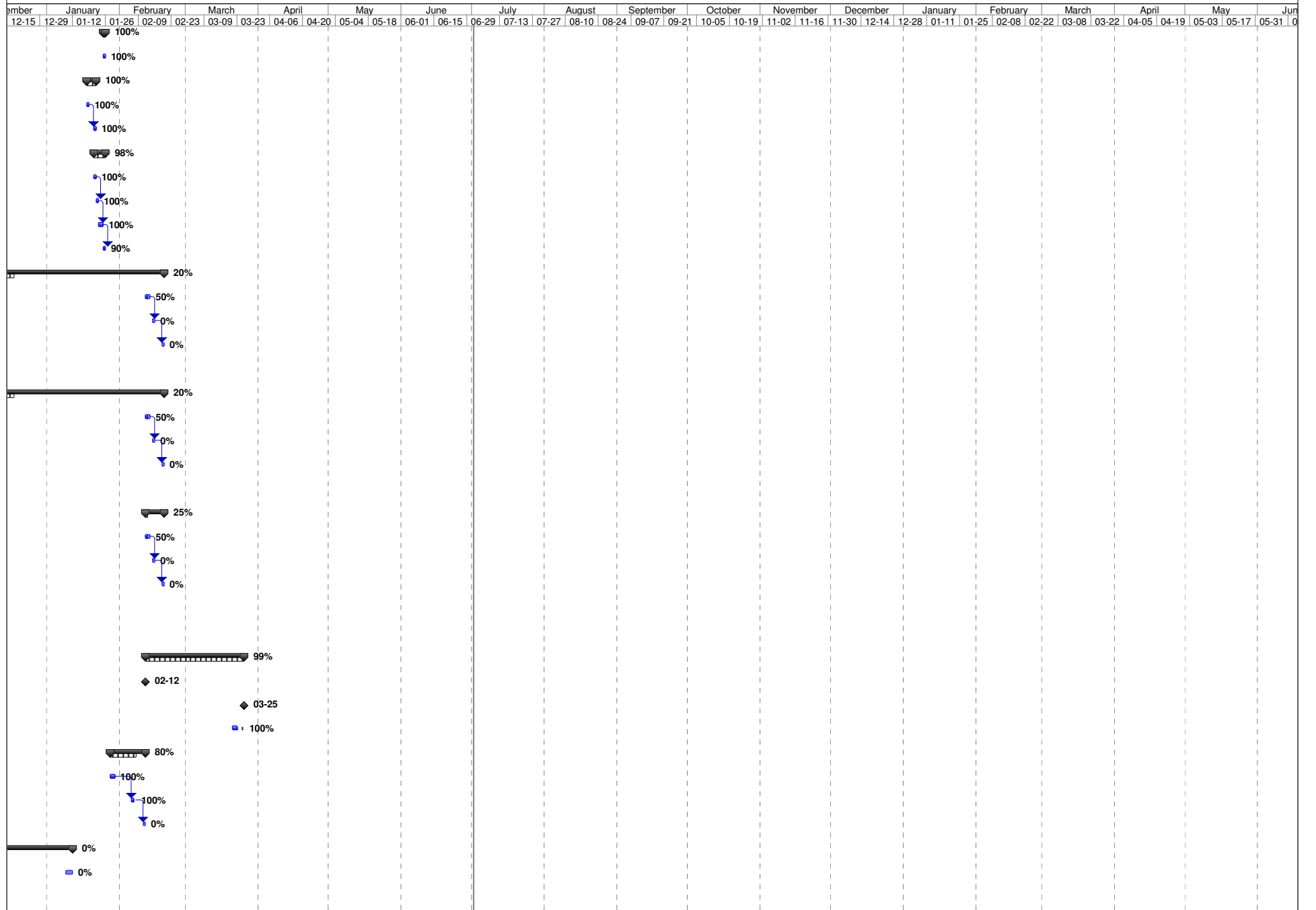


EnWin EnStar Project Plan - July 5, 2013

The chart displays the following tasks and their completion status:

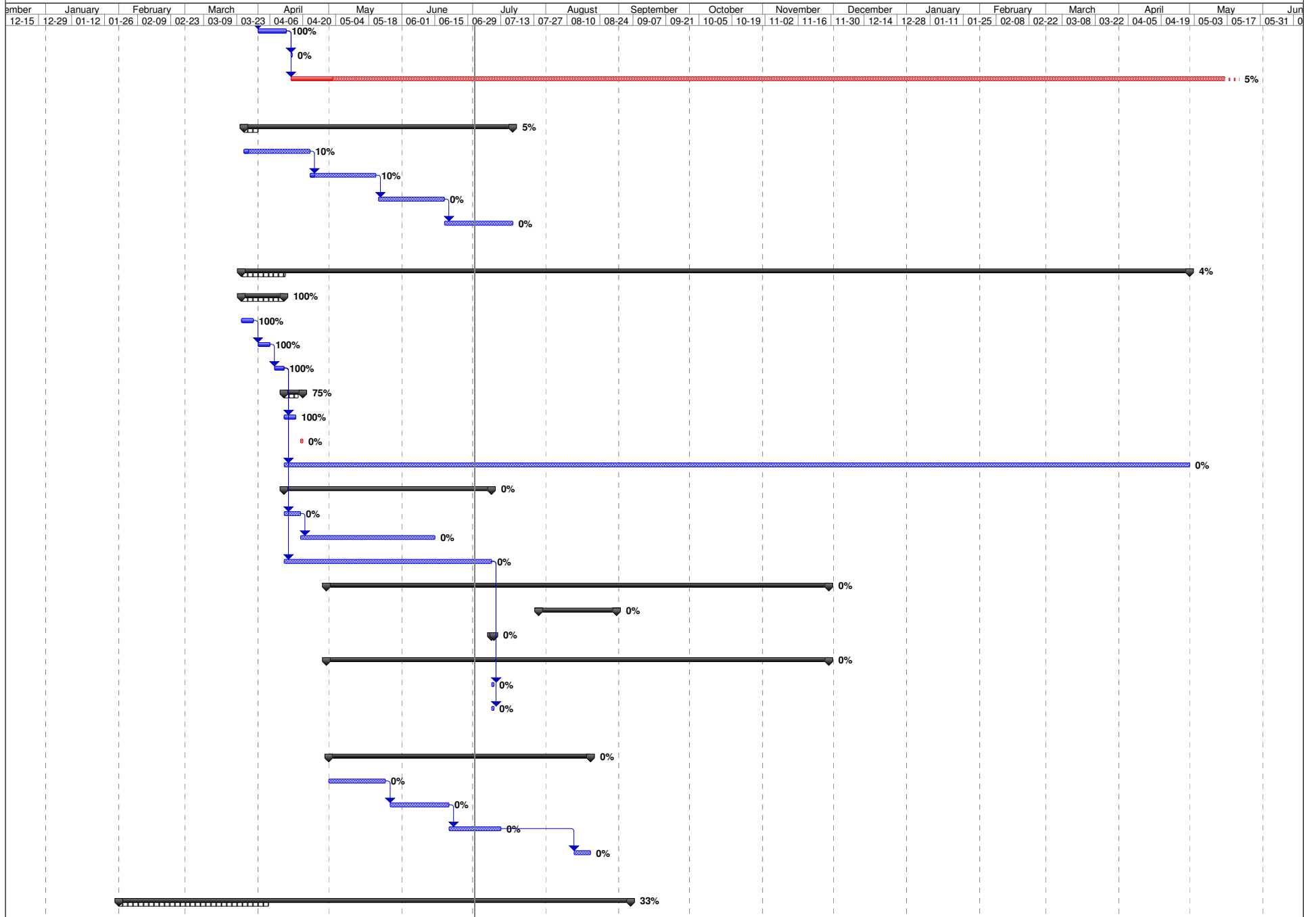
- Task 1: 100% completion (December 2012 - January 2013)
- Task 2: 100% completion (January 2013 - February 2013)
- Task 3: 100% completion (February 2013 - March 2013)
- Task 4: 100% completion (March 2013 - April 2013)
- Task 5: 100% completion (April 2013 - May 2013)
- Task 6: 100% completion (May 2013 - June 2013)
- Task 7: 100% completion (June 2013 - July 2013)
- Task 8: 100% completion (July 2013 - August 2013)
- Task 9: 100% completion (August 2013 - September 2013)
- Task 10: 100% completion (September 2013 - October 2013)
- Task 11: 100% completion (October 2013 - November 2013)
- Task 12: 100% completion (November 2013 - December 2013)
- Task 13: 100% completion (December 2013 - January 2014)
- Task 14: 100% completion (January 2014 - February 2014)
- Task 15: 100% completion (February 2014 - March 2014)
- Task 16: 100% completion (March 2014 - April 2014)
- Task 17: 100% completion (April 2014 - May 2014)
- Task 18: 100% completion (May 2014 - June 2014)
- Task 19: 100% completion (June 2014 - July 2014)
- Task 20: 100% completion (July 2014 - August 2014)
- Task 21: 100% completion (August 2014 - September 2014)
- Task 22: 100% completion (September 2014 - October 2014)
- Task 23: 100% completion (October 2014 - November 2014)
- Task 24: 100% completion (November 2014 - December 2014)
- Task 25: 100% completion (December 2014 - January 2015)
- Task 26: 100% completion (January 2015 - February 2015)
- Task 27: 100% completion (February 2015 - March 2015)
- Task 28: 100% completion (March 2015 - April 2015)
- Task 29: 100% completion (April 2015 - May 2015)
- Task 30: 100% completion (May 2015 - June 2015)
- Task 31: 100% completion (June 2015 - July 2015)
- Task 32: 100% completion (July 2015 - August 2015)
- Task 33: 100% completion (August 2015 - September 2015)
- Task 34: 100% completion (September 2015 - October 2015)
- Task 35: 100% completion (October 2015 - November 2015)
- Task 36: 100% completion (November 2015 - December 2015)
- Task 37: 100% completion (December 2015 - January 2016)
- Task 38: 100% completion (January 2016 - February 2016)
- Task 39: 100% completion (February 2016 - March 2016)
- Task 40: 100% completion (March 2016 - April 2016)
- Task 41: 100% completion (April 2016 - May 2016)
- Task 42: 100% completion (May 2016 - June 2016)
- Task 43: 100% completion (June 2016 - July 2016)
- Task 44: 100% completion (July 2016 - August 2016)
- Task 45: 100% completion (August 2016 - September 2016)
- Task 46: 100% completion (September 2016 - October 2016)
- Task 47: 100% completion (October 2016 - November 2016)
- Task 48: 100% completion (November 2016 - December 2016)
- Task 49: 100% completion (December 2016 - January 2017)
- Task 50: 100% completion (January 2017 - February 2017)
- Task 51: 100% completion (February 2017 - March 2017)
- Task 52: 100% completion (March 2017 - April 2017)
- Task 53: 100% completion (April 2017 - May 2017)
- Task 54: 100% completion (May 2017 - June 2017)
- Task 55: 100% completion (June 2017 - July 2017)
- Task 56: 100% completion (July 2017 - August 2017)
- Task 57: 100% completion (August 2017 - September 2017)
- Task 58: 100% completion (September 2017 - October 2017)
- Task 59: 100% completion (October 2017 - November 2017)
- Task 60: 100% completion (November 2017 - December 2017)
- Task 61: 100% completion (December 2017 - January 2018)
- Task 62: 100% completion (January 2018 - February 2018)
- Task 63: 100% completion (February 2018 - March 2018)
- Task 64: 100% completion (March 2018 - April 2018)
- Task 65: 100% completion (April 2018 - May 2018)
- Task 66: 100% completion (May 2018 - June 2018)
- Task 67: 100% completion (June 2018 - July 2018)
- Task 68: 100% completion (July 2018 - August 2018)
- Task 69: 100% completion (August 2018 - September 2018)
- Task 70: 100% completion (September 2018 - October 2018)
- Task 71: 100% completion (October 2018 - November 2018)
- Task 72: 100% completion (November 2018 - December 2018)
- Task 73: 100% completion (December 2018 - January 2019)
- Task 74: 100% completion (January 2019 - February 2019)
- Task 75: 100% completion (February 2019 - March 2019)
- Task 76: 100% completion (March 2019 - April 2019)
- Task 77: 100% completion (April 2019 - May 2019)
- Task 78: 100% completion (May 2019 - June 2019)
- Task 79: 100% completion (June 2019 - July 2019)
- Task 80: 100% completion (July 2019 - August 2019)
- Task 81: 100% completion (August 2019 - September 2019)
- Task 82: 100% completion (September 2019 - October 2019)
- Task 83: 100% completion (October 2019 - November 2019)
- Task 84: 100% completion (November 2019 - December 2019)
- Task 85: 100% completion (December 2019 - January 2020)
- Task 86: 100% completion (January 2020 - February 2020)
- Task 87: 100% completion (February 2020 - March 2020)
- Task 88: 100% completion (March 2020 - April 2020)
- Task 89: 100% completion (April 2020 - May 2020)
- Task 90: 100% completion (May 2020 - June 2020)
- Task 91: 100% completion (June 2020 - July 2020)
- Task 92: 100% completion (July 2020 - August 2020)
- Task 93: 100% completion (August 2020 - September 2020)
- Task 94: 100% completion (September 2020 - October 2020)
- Task 95: 100% completion (October 2020 - November 2020)
- Task 96: 100% completion (November 2020 - December 2020)
- Task 97: 100% completion (December 2020 - January 2021)
- Task 98: 100% completion (January 2021 - February 2021)
- Task 99: 100% completion (February 2021 - March 2021)
- Task 100: 100% completion (March 2021 - April 2021)
- Task 101: 100% completion (April 2021 - May 2021)
- Task 102: 100% completion (May 2021 - June 2021)
- Task 103: 100% completion (June 2021 - July 2021)
- Task 104: 100% completion (July 2021 - August 2021)
- Task 105: 100% completion (August 2021 - September 2021)
- Task 106: 100% completion (September 2021 - October 2021)
- Task 107: 100% completion (October 2021 - November 2021)
- Task 108: 100% completion (November 2021 - December 2021)
- Task 109: 100% completion (December 2021 - January 2022)
- Task 110: 100% completion (January 2022 - February 2022)
- Task 111: 100% completion (February 2022 - March 2022)
- Task 112: 100% completion (March 2022 - April 2022)
- Task 113: 100% completion (April 2022 - May 2022)
- Task 114: 100% completion (May 2022 - June 2022)
- Task 115: 100% completion (June 2022 - July 2022)
- Task 116: 100% completion (July 2022 - August 2022)
- Task 117: 100% completion (August 2022 - September 2022)
- Task 118: 100% completion (September 2022 - October 2022)
- Task 119: 100% completion (October 2022 - November 2022)
- Task 120: 100% completion (November 2022 - December 2022)
- Task 121: 100% completion (December 2022 - January 2023)
- Task 122: 100% completion (January 2023 - February 2023)
- Task 123: 100% completion (February 2023 - March 2023)
- Task 124: 100% completion (March 2023 - April 2023)
- Task 125: 100% completion (April 2023 - May 2023)
- Task 126: 100% completion (May 2023 - June 2023)
- Task 127: 100% completion (June 2023 - July 2023)
- Task 128: 100% completion (July 2023 - August 2023)
- Task 129: 100% completion (August 2023 - September 2023)
- Task 130: 100% completion (September 2023 - October 2023)
- Task 131: 100% completion (October 2023 - November 2023)
- Task 132: 100% completion (November 2023 -

EnWin EnStar Project Plan - July 5, 2013



December		January		February		March		April		May		June		July		August		September		October		November		December		January		February		March		April		May		June			
12-15	12-29	01-12	01-26	02-09	02-23	03-09	03-23	04-06	04-20	05-04	05-18	06-01	06-15	06-29	07-13	07-27	08-10	08-24	09-07	09-21	10-05	10-19	11-02	11-16	11-30	12-14	12-28	01-11	01-25	02-08	02-22	03-08	03-22	04-05	04-19	05-03	05-17	05-31	06-04

EnWin EnStar Project Plan - July 5, 2013



EnWin EnStar Project Plan - July 5, 2013

