

Smart Meter Time of Use EnWin Utilities Ltd

For the Period to: 31-Jul-13

RPP Eligible Consumers:

| Description | Residential | GS < 50kW Class | Total |
|--|-------------|-----------------|--------|
| Total Number of RPP-eligible consumers | 77,277 | 7,120 | 84,397 |
| Number of smart meters installed in the period | 12 | 12 | 24 |
| Number of smart meters registered with the MDM/R in the period | 0 | 0 | 0 |
| Number of RPP consumers being charged TOU prices added in the period | 0 | 0 | 0 |
| Total cumulative number of smart meters installed in the service area at the end of the period | 78,126 | 7,537 | 85,663 |
| Total cumulative number of smart meters registered with the MDM/R at the end of the period | 0 | 0 | 0 |
| Total cumulative number of consumers being charged TOU prices at the end of the period | 0 | 0 | 0 |

Progress Report on SME Milestones

| Activity | Original Scheduled Completion Date | Status | Expected Completion Date | Actual Completion Date |
|--------------------------|------------------------------------|----------|--------------------------|------------------------|
| 1. AMCC Internal Testing | | Complete | July 30, 2010 | July 30, 2010 |

| Activity | Original Scheduled Completion Date | Status | Expected Completion Date | Actual Completion Date |
|-------------------------|------------------------------------|-------------|--------------------------|------------------------|
| 2. CIS Internal Testing | September 4, 2013 | On Schedule | September 4, 2013 | |

| Activity | Yes or No? | Expected Completion Date | Actual Completion Date |
|---|------------|--------------------------|------------------------|
| 3. MDM/R Registration Application submitted | Yes | January 1, 2010 | January 1, 2010 |

| Activity | Yes or No? | Status, if Yes | Expected Completion Date | Actual Completion Date |
|--|------------|----------------|--------------------------|------------------------|
| 4. Enrolment Wave requested and confirmed (Note: the SME will either confirm the requested start date or suggest an alternate) | Yes | Complete | March 25, 2013 | January 23, 2013 |

| Activity | Original Scheduled Completion Date | Status | Expected Completion Date | Actual Completion Date |
|-----------------|------------------------------------|-------------|--------------------------|------------------------|
| 5. Unit Testing | September 12, 2013 | On Schedule | September 12, 2013 | |

| Activity | Original Scheduled Completion Date | Status | Expected Completion Date | Actual Completion Date |
|---|------------------------------------|-------------|--------------------------|------------------------|
| 6. Submitted a completed Self Certification for Enrolment Testing SME_FORM_0007 (Note: This must be submitted at least one week prior to the confirmed enrolment wave start date) | August 26, 2013 | On Schedule | August 26, 2013 | |

| Activity | Original Scheduled Completion Date | Status | Expected Completion Date | Actual Completion Date |
|-------------------------------------|------------------------------------|-------------|--------------------------|------------------------|
| 7. System Integration Testing (SIT) | September 18, 2013 | On Schedule | September 18, 2013 | |

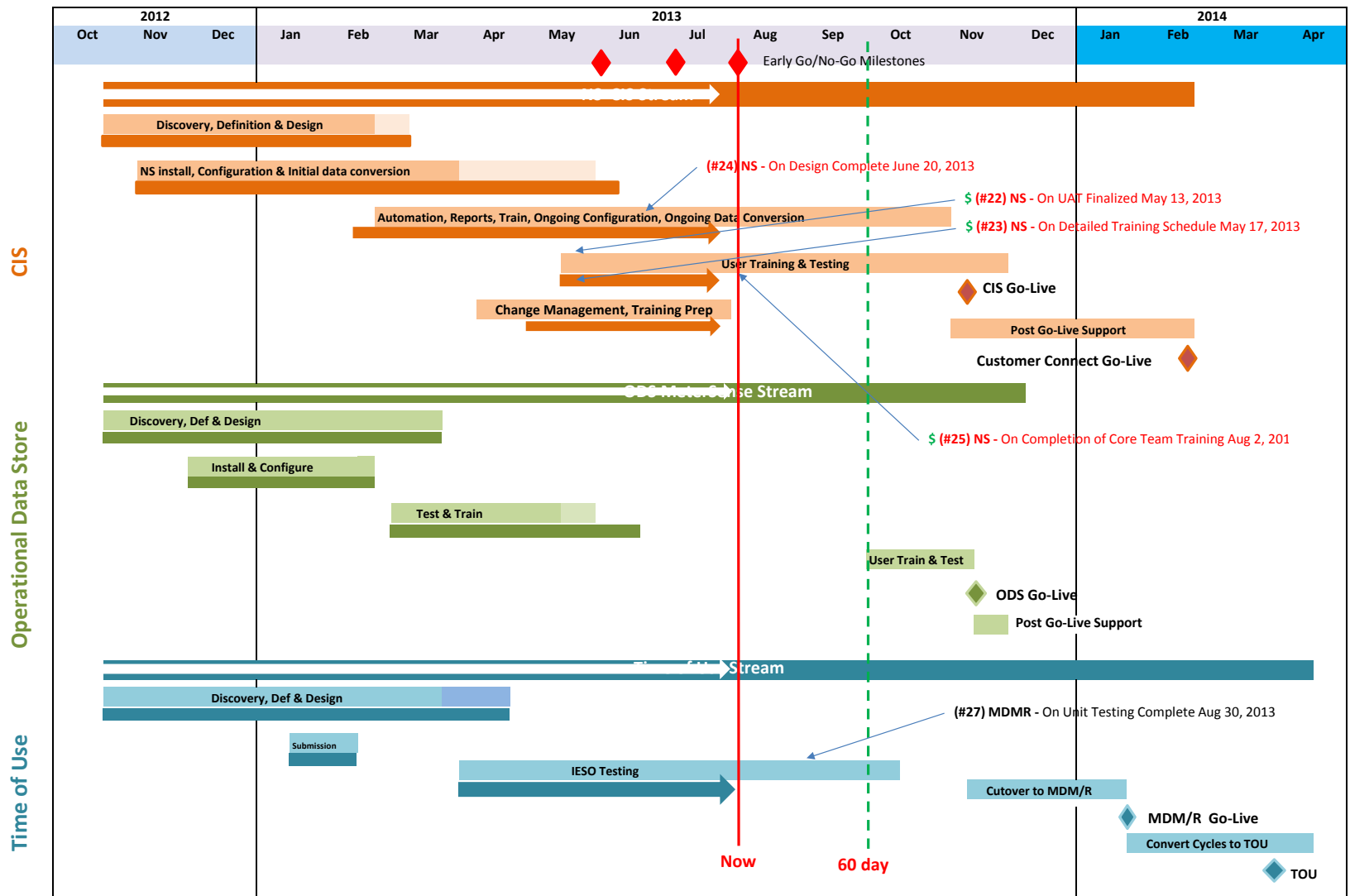
| Activity | Original Scheduled Completion Date | Status | Expected Completion Date | Actual Completion Date |
|-------------------------------|------------------------------------|-------------|--------------------------|------------------------|
| 8. Qualification Testing (QT) | October 17, 2013 | On Schedule | October 17, 2013 | |

| Activity | Original Scheduled Completion Date | Status | Expected Completion Date | Actual Completion Date |
|---------------------------------|------------------------------------|-----------------|--------------------------|------------------------|
| 9. Self Certification - Cutover | November 28, 2013 | Behind Schedule | January 6, 2014 | |

| Activity | Original Scheduled Completion Date | Status | Expected Completion Date | Actual Completion Date |
|---|------------------------------------|-----------------|--------------------------|------------------------|
| 10. Transition to Production Operations | March 26, 2014 | Behind Schedule | April 2, 2014 | |

Additional Comments and Information

EnWin expects to meet the requirement to apply TOU pricing under the Standard Supply Service Code to all of its customers by April 30, 2014 as approved in application EB-2012-0405



EnWin EnStar Project Plan August 2, 2013

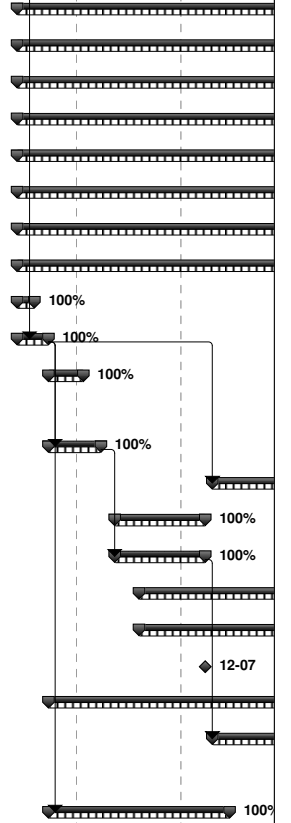
| ID | % Complete | % Work Complete | Task Name | Start | Finish | Work | Duration | Predecessors | Resource Names | er | October | November | December | | | |
|-----|------------|-----------------|--|--------------|--------------|---------------|-----------|--------------|----------------|-------|---------|----------|----------|-------|-------|-------|
| 1 | 63% | 56% | Draft EnWin NorthStar Implementation Project Plan | Mon 12-10-15 | Wed 14-04-02 | 35,794.18 hrs | 73.2 wks? | | | 09-22 | 10-06 | 10-20 | 11-03 | 11-17 | 12-01 | 12-15 |
| 2 | | | | | | | | | | | | | | | | |
| 3 | 100% | 100% | START DATE (Tentative - Would need to be confirmed and reviewed at | Mon 12-10-15 | Mon 12-10-15 | 0 hrs | 0 wks | | | | | | | | | |
| 4 | 0% | 0% | Milestone Validation section | Wed 13-09-04 | Thu 13-11-14 | 0 hrs | 10.05 wks | | | | | | | | | |
| 13 | | | | | | | | | | | | | | | | |
| 14 | 62% | 52% | CIS Project | Mon 12-10-15 | Mon 14-03-24 | 24,561.67 hrs | 71.7 wks | | | | | | | | | |
| 15 | 54% | 54% | Project Management | Mon 12-10-15 | Tue 14-03-11 | 4,792.13 hrs | 70 wks | | | | | | | | | |
| 16 | 54% | 53% | Project Management / Technical Oversight / IT Environment S | Mon 12-10-15 | Tue 14-03-11 | 4,041.13 hrs | 70 wks | | | | | | | | | |
| 20 | 53% | 53% | Communication Management | Mon 12-10-15 | Tue 14-03-11 | 532 hrs | 70 wks | | | | | | | | | |
| 25 | 54% | 57% | Risk Management | Mon 12-10-15 | Tue 14-02-04 | 37 hrs | 65 wks | | | | | | | | | |
| 28 | 100% | 100% | Project Plan | Mon 12-10-15 | Fri 12-11-16 | 96 hrs | 5 wks | | | | | | | | | |
| 33 | 69% | 42% | Deliverable/Acceptance Management | Mon 12-11-19 | Tue 13-01-22 | 86 hrs | 8 wks | | | | | | | | | |
| 39 | 94% | 97% | Solution Definition Phase | Mon 12-10-15 | Mon 13-04-15 | 2,822 hrs | 24.6 wks | | | | | | | | | |
| 40 | 100% | 100% | Project Preparation | Mon 12-10-15 | Fri 12-10-19 | 30 hrs | 0.85 wks | 3 | | | | | | | | |
| 43 | 100% | 100% | Project Kick-Off | Mon 12-10-15 | Tue 12-10-23 | 124 hrs | 1.4 wks | | | | | | | | | |
| 47 | 100% | 100% | NorthStar Product Orientation Session - Training | Mon 12-10-15 | Thu 12-10-25 | 161 hrs | 1.8 wks | | | | | | | | | |
| 51 | 100% | 100% | Discovery | Mon 12-10-15 | Wed 12-11-07 | 1,038 hrs | 3.6 wks | 3 | | | | | | | | |
| 59 | 94% | 97% | CIS Definition | Thu 12-11-08 | Fri 13-02-01 | 1,150 hrs | 11 wks | | | | | | | | | |
| 102 | 84% | 83% | Customer Connect Definition | Mon 13-02-04 | Mon 13-04-15 | 319 hrs | 10 wks | | | | | | | | | |
| 112 | 0% | 0% | NS - Milestone - CustomerConnect requirements document finali | Mon 13-04-15 | Mon 13-04-15 | 0 hrs | 0 wks | 111 | | | | | | | | |
| 113 | 100% | 100% | NS - Invoice Milestone - Sign off on Requirements Documents | Fri 13-01-04 | Fri 13-01-04 | 0 hrs | 0 wks | 88,81,75,68 | | | | | | | | |
| 114 | 100% | 100% | Solution Design Phase | Mon 12-10-15 | Fri 13-02-22 | 739.93 hrs | 17.3 wks | | | | | | | | | |
| 115 | 100% | 100% | CIS Design | Mon 12-10-15 | Fri 13-02-15 | 739.93 hrs | 16.6 wks | | | | | | | | | |
| 161 | 100% | 100% | NS - Milestone - Solution Design Complete | Fri 13-02-22 | Fri 13-02-22 | 0 hrs | 0 wks | 115,107 | | | | | | | | |
| 162 | 90% | 95% | Solution Configuration and Construction Phase | Mon 12-11-05 | Wed 13-06-19 | 6,232.52 hrs | 30.8 wks | | | | | | | | | |
| 163 | 90% | 95% | CIS Configuration and Construction | Mon 12-11-05 | Wed 13-06-19 | 6,232.52 hrs | 30.8 wks | | | | | | | | | |
| 291 | 23% | 11% | Solution Validation Phase | Thu 13-05-23 | Wed 13-09-04 | 7,883.73 hrs | 14.35 wks | | | | | | | | | |
| 292 | 23% | 11% | CIS Validation | Thu 13-05-23 | Wed 13-09-04 | 7,883.73 hrs | 14.35 wks | | | | | | | | | |
| 383 | 0% | 0% | Solution Transition Readiness Phase | Tue 13-08-20 | Thu 13-11-07 | 876 hrs | 11 wks | | | | | | | | | |
| 384 | 0% | 0% | CIS Transition Readiness | Tue 13-08-20 | Thu 13-11-07 | 876 hrs | 11 wks | | | | | | | | | |
| 418 | 0% | 0% | CIS Solution Go-Live Phase | Mon 12-10-15 | Mon 14-03-24 | 1,215.37 hrs | 71.7 wks | | | | | | | | | |
| 419 | 0% | 0% | CIS Go-Live | Thu 13-10-24 | Thu 13-12-12 | 605 hrs | 6.9 wks | | | | | | | | | |
| 445 | 0% | 0% | Post-Go-Live | Mon 12-10-15 | Mon 14-03-24 | 610.37 hrs | 71.7 wks | | | | | | | | | |
| 458 | 0% | 0% | NS - NorthStar CIS Project Implementation End Date | Mon 14-03-24 | Mon 14-03-24 | 0 hrs | 0 wks | 418 | | | | | | | | |
| 459 | | | | | | | | | | | | | | | | |
| 460 | | | | | | | | | | | | | | | | |

EnWin EnStar Project Plan August 2, 2013

| ID | % Complete | % Work Complete | Task Name | Start | Finish | Work | Duration | Predecessors | Resource Names | er | October | November | December | | | |
|-----|------------|-----------------|--|--------------|--------------|--------------|-----------|-------------------|----------------|-------|---------|----------|----------|-------|-------|-------|
| 461 | 56% | 48% | MDM/R Project | Mon 12-10-15 | Wed 14-04-02 | 6,151.23 hrs | 73.2 wks? | | | 09-22 | 10-06 | 10-20 | 11-03 | 11-17 | 12-01 | 12-15 |
| 462 | 56% | 60% | Project Management | Mon 12-10-15 | Tue 14-03-11 | 739.4 hrs | 70 wks | | | | | | | | | |
| 463 | 56% | 56% | Project Management | Mon 12-10-15 | Tue 14-03-11 | 560 hrs | 70 wks | | | | | | | | | |
| 466 | 56% | 56% | Communication Management | Mon 12-10-15 | Tue 14-03-11 | 70 hrs | 70 wks | | | | | | | | | |
| 469 | 56% | 56% | Risk Management | Mon 12-10-15 | Tue 14-03-11 | 35 hrs | 70 wks | | | | | | | | | |
| 471 | 100% | 100% | IESO Project Plan | Mon 12-11-26 | Wed 13-01-16 | 65.4 hrs | 6.2 wks | | | | | | | | | |
| 477 | 100% | 100% | Initial MDM/R Registration Activities | Wed 13-01-16 | Tue 13-01-22 | 4 hrs | 1 wk | | | | | | | | | |
| 485 | 67% | 40% | Ongoing MDM/R Registration Activities | Tue 13-01-22 | Tue 13-10-29 | 5 hrs | 38.95 wks | | | | | | | | | |
| 496 | 100% | 100% | Solution Definition Phase | Mon 12-10-15 | Tue 12-11-13 | 313 hrs | 4.4 wks | | | | | | | | | |
| 497 | 100% | 100% | Project Kick-Off | Mon 12-10-15 | Tue 12-10-23 | 53 hrs | 1.4 wks | | | | | | | | | |
| 500 | 100% | 100% | Discovery | Wed 12-10-24 | Tue 12-11-13 | 260 hrs | 3 wks | | | | | | | | | |
| 506 | 95% | 100% | Solution Design Phase | Wed 13-01-09 | Mon 13-06-10 | 649.97 hrs | 21.4 wks | | | | | | | | | |
| 507 | 100% | 100% | Business Process Changes Review | Wed 13-02-13 | Tue 13-03-26 | 390 hrs | 5.6 wks | | | | | | | | | |
| 514 | 100% | 100% | ER - Milestone - Business Process Changes Completed | Tue 13-03-26 | Tue 13-03-26 | 0 hrs | 0 days | 513 | | | | | | | | |
| 515 | 100% | 100% | CIS Design Document | Tue 13-03-26 | Fri 13-03-29 | 24 hrs | 0.6 wks | 514 | | | | | | | | |
| 517 | 81% | 100% | Unit Test Planning | Wed 13-01-09 | Wed 13-02-13 | 67.97 hrs | 5.2 wks | 178FS-5 wks | | | | | | | | |
| 525 | 100% | 100% | Cutover Planning | Thu 13-02-07 | Mon 13-03-25 | 86 hrs | 6.4 wks | | | | | | | | | |
| 532 | 100% | 100% | Staff Training | Mon 13-05-06 | Mon 13-06-10 | 82 hrs | 5 wks | 517,755 | | | | | | | | |
| 540 | 100% | 100% | Solution Construction Phase | Fri 12-12-21 | Mon 13-06-10 | 108 hrs | 22.6 wks | | | | | | | | | |
| 541 | 100% | 100% | CIS Implementation | Wed 13-03-13 | Fri 13-04-05 | 48 hrs | 3.4 wks | 185,166,171 | | | | | | | | |
| 545 | 100% | 100% | Metersense Implementation | Thu 13-03-28 | Wed 13-04-03 | 24 hrs | 1 wk | 185,166,171 | | | | | | | | |
| 547 | 100% | 100% | mCARE Implementation | Wed 13-04-03 | Mon 13-06-10 | 0 hrs | 9.4 wks | 185,166,171 | | | | | | | | |
| 550 | 100% | 100% | AS2 Server Configuration | Fri 12-12-21 | Thu 13-03-14 | 36 hrs | 10.4 wks | | | | | | | | | |
| 556 | 100% | 100% | ER - Milestone - Completed All System Installations and Configur | Thu 13-03-21 | Thu 13-03-21 | 0 hrs | 0 days | 541,555 | | | | | | | | |
| 557 | 72% | 52% | Solution Validation Phase | Thu 13-04-04 | Mon 13-09-09 | 2,755.5 hrs | 21.8 wks? | | | | | | | | | |
| 558 | 72% | 52% | Unit Testing with IESO | Thu 13-04-04 | Fri 13-08-30 | 2,755.5 hrs | 20.8 wks? | | | | | | | | | |
| 591 | 0% | 0% | ER - Milestone - Unit Testing Completed | Fri 13-08-30 | Fri 13-08-30 | 0 hrs | 0 days | 590 | | | | | | | | |
| 592 | 0% | 0% | MDM/R Checkpoint - Unit Testing Completed | Fri 13-08-30 | Fri 13-08-30 | 0 hrs | 0 days | | | | | | | | | |
| 593 | 0% | 0% | ER - Deliverable - MDM/R Unit Testing Results | Mon 13-09-09 | Mon 13-09-09 | 0 hrs | 0 wks | 591FS+1 wk | | | | | | | | |
| 594 | 0% | 0% | Solution Transition Readiness | Wed 13-09-04 | Mon 13-10-21 | 1,193.38 hrs | 6.4 wks | 591 | | | | | | | | |
| 595 | 0% | 0% | MDMR Enrolment - SIT | Wed 13-09-04 | Fri 13-09-20 | 505.83 hrs | 2.42 wks | 589FS-3 wks | | | | | | | | |
| 602 | 0% | 0% | MDMR Enrolment - QT | Fri 13-09-20 | Mon 13-10-21 | 687.55 hrs | 4 wks | 598 | | | | | | | | |
| 610 | 0% | 0% | Solution Go-Live | Mon 13-11-11 | Mon 13-12-02 | 136 hrs | 3 wks | | | | | | | | | |
| 611 | 0% | 0% | MDMR Enrolment - Cutover | Mon 13-11-11 | Mon 13-12-02 | 136 hrs | 3 wks | 435,609FS+10 days | | | | | | | | |
| 616 | 0% | 0% | Post Implementation Support | Mon 14-01-06 | Wed 14-04-02 | 256 hrs | 12.6 wks | | | | | | | | | |
| 626 | | | | | | | | | | | | | | | | |

EnWin EnStar Project Plan August 2, 2013

| ID | % Complete | % Work Complete | Task Name | Start | Finish | Work | Duration | Predecessors | Resource Names | er | October | November | December | | | |
|-----|------------|-----------------|---|--------------|--------------|--------------|----------|--------------|----------------|-------|---------|----------|----------|-------|-------|-------|
| 627 | | | | | | | | | | 09-22 | 10-06 | 10-20 | 11-03 | 11-17 | 12-01 | 12-15 |
| 628 | 70% | 86% | MeterSense Project - ENWIN | Mon 12-10-15 | Mon 14-01-06 | 5,081.28 hrs | 60.8 wks | | | | | | | | | |
| 629 | 64% | 66% | Project Management | Mon 12-10-15 | Mon 14-01-06 | 996 hrs | 60.8 wks | | | | | | | | | |
| 630 | 62% | 62% | Project Management / Technical Oversight | Mon 12-10-15 | Mon 13-12-30 | 350 hrs | 60 wks | | | | | | | | | |
| 633 | 62% | 62% | Communication Management | Mon 12-10-15 | Mon 14-01-06 | 432 hrs | 60.8 wks | | | | | | | | | |
| 638 | 62% | 62% | Scope Management | Mon 12-10-15 | Mon 13-12-30 | 60 hrs | 60 wks | | | | | | | | | |
| 640 | 67% | 73% | Risk Management | Mon 12-10-15 | Wed 13-11-20 | 82 hrs | 55 wks | | | | | | | | | |
| 643 | 100% | 100% | Project Plan | Mon 12-10-15 | Wed 13-02-20 | 72 hrs | 17 wks | | | | | | | | | |
| 648 | 100% | 100% | NorthStar MeterSense Solution Definition Phase | Mon 12-10-15 | Tue 13-02-05 | 832.27 hrs | 15 wks | | | | | | | | | |
| 649 | 100% | 100% | Project Preparation | Mon 12-10-15 | Fri 12-10-19 | 36 hrs | 1 wk | | | | | | | | | |
| 652 | 100% | 100% | Project Kick-Off | Mon 12-10-15 | Tue 12-10-23 | 63 hrs | 1.4 wks | 3 | | | | | | | | |
| 656 | 100% | 100% | NorthStar MeterSense Product Orientation Session - Training | Wed 12-10-24 | Fri 12-11-02 | 24.8 hrs | 1.6 wks | | | | | | | | | |
| 660 | 100% | 100% | Discovery | Wed 12-10-24 | Wed 12-11-07 | 213.47 hrs | 2.2 wks | 652 | | | | | | | | |
| 666 | 100% | 100% | Physical Architecture Review / Recommendation | Mon 12-12-10 | Tue 13-01-22 | 71.48 hrs | 5 wks | 652 | | | | | | | | |
| 670 | 100% | 100% | Solution Requirements Documents | Mon 12-11-12 | Fri 12-12-07 | 141.35 hrs | 4 wks | | | | | | | | | |
| 676 | 100% | 100% | Integration Requirements Document | Mon 12-11-12 | Fri 12-12-07 | 82.32 hrs | 4 wks | 660 | | | | | | | | |
| 682 | 100% | 100% | Training / Change Management Plan | Mon 12-11-19 | Tue 13-02-05 | 92.27 hrs | 10 wks | | | | | | | | | |
| 688 | 100% | 100% | Test Plan | Mon 12-11-19 | Tue 13-02-05 | 107.57 hrs | 10 wks | | | | | | | | | |
| 694 | 100% | 100% | MS - Invoice Milestone - Sign off on Solutions Requirements Docu | Fri 12-12-07 | Fri 12-12-07 | 0 hrs | 0 wks | 675 | | | | | | | | |
| 695 | 100% | 100% | MeterSense Solution Design Phase | Wed 12-10-24 | Wed 13-02-27 | 483.38 hrs | 16.6 wks | | | | | | | | | |
| 696 | 100% | 100% | Integration Design Document Document | Mon 12-12-10 | Wed 13-02-20 | 216 hrs | 9 wks | 676 | | | | | | | | |
| 700 | 100% | 100% | Test Cases / Scenarios Document | Wed 13-02-06 | Wed 13-02-27 | 63.38 hrs | 3 wks | | | | | | | | | |
| 704 | 100% | 100% | NorthStar MeterSense Base Solution Installation and Configuration | Wed 12-10-24 | Fri 12-12-14 | 204 hrs | 7.6 wks | 652 | | | | | | | | |
| 711 | 100% | 100% | MeterSense Configuration and Construction Phase | Wed 13-01-02 | Tue 13-04-30 | 699.5 hrs | 16.8 wks | | | | | | | | | |
| 712 | 100% | 100% | Configuration and Construction | Wed 13-01-02 | Tue 13-03-26 | 540 hrs | 11.8 wks | | | | | | | | | |
| 728 | 100% | 100% | Milestone - Solution Feature Complete | Tue 13-03-26 | Tue 13-03-26 | 0 hrs | 0 wks | 725 | | | | | | | | |
| 729 | 100% | 100% | User Acceptance Testing Detailed Plan Document | Wed 13-03-27 | Tue 13-04-30 | 140 hrs | 5 wks | 695FS-1 wk | | | | | | | | |
| 735 | 100% | 100% | Training Detailed Schedule | Thu 13-02-28 | Wed 13-03-27 | 19.5 hrs | 4 wks | | | | | | | | | |
| 739 | 98% | 96% | MeterSense Solution Validation Phase | Wed 13-02-27 | Fri 13-05-17 | 1,684.13 hrs | 11.6 wks | | | | | | | | | |
| 740 | 100% | 100% | Testing Environment | Wed 13-02-27 | Tue 13-03-26 | 80 hrs | 4 wks | | | | | | | | | |
| 742 | 100% | 100% | Functional Testing | Wed 13-03-27 | Tue 13-04-16 | 601.37 hrs | 3 wks | | | | | | | | | |
| 746 | 100% | 100% | Integration Testing | Wed 13-04-17 | Tue 13-04-30 | 263.97 hrs | 2 wks | 742 | | | | | | | | |
| 751 | 85% | 80% | Training | Mon 13-04-22 | Fri 13-05-03 | 330.8 hrs | 2 wks | 746FS-2 wks | | | | | | | | |
| 758 | 98% | 98% | User Acceptance Testing | Mon 13-05-06 | Fri 13-05-17 | 408 hrs | 2 wks | 742,746,755 | | | | | | | | |



EnWin EnStar Project Plan August 2, 2013

| ID | % Complete | % Work Complete | Task Name | Start | Finish | Work | Duration | Predecessors | Resource Names | er | October | November | December | | | |
|-----|------------|-----------------|--|--------------|--------------|-------------|-----------|-----------------|---|-------|---------|----------|----------|-------|-------|-------|
| 763 | | 0% | MS - Deliverable - Accepted Solution | Fri 13-05-17 | Fri 13-05-17 | 0 hrs | 0 wks | 742,746,751,761 | | 09-22 | 10-06 | 10-20 | 11-03 | 11-17 | 12-01 | 12-15 |
| 764 | 0% | 0% | 1.5 Years of Historical Data Loading | Mon 13-06-17 | Mon 13-10-28 | 82 hrs | 18.4 wks | | | | | | | | | |
| 769 | 53% | 25% | MeterSense Solution Production Environment Phase | Fri 13-02-01 | Thu 13-11-28 | 304 hrs | 41.75 wks | | | | | | | | | |
| 770 | 89% | 76% | Production Environment | Fri 13-02-01 | Thu 13-10-24 | 100 hrs | 36.75 wks | | | | | | | | | |
| 775 | 0% | 0% | Business Process Training (prior to Live) | Thu 13-10-17 | Thu 13-11-07 | 112 hrs | 3 wks | | | | | | | | | |
| 779 | 0% | 0% | Production Environment Release | Thu 13-11-07 | Thu 13-11-14 | 32 hrs | 1 wk | | | | | | | | | |
| 784 | 0% | 0% | Post-Production Environment - Enhanced Support | Thu 13-11-14 | Thu 13-11-28 | 60 hrs | 2 wks | 779 | | | | | | | | |
| 786 | 0% | 0% | MS - Milestone - MeterSense Project Completed | Thu 13-11-28 | Thu 13-11-28 | 0 hrs | 0 wks | 784 | | | | | | | | |
| 787 | 0% | 0% | Milestone - Final Acceptance of Project Closeout | Tue 14-04-01 | Tue 14-04-01 | 0 hrs | 0 wks | 458,625,769 | | | | | | | | |
| 788 | | | | | | | | | | | | | | | | |
| 789 | | | | | | | | | | | | | | | | |
| 790 | 22% | 22% | EnWin Project Tasks | Mon 12-10-15 | Wed 14-05-21 | 2,551.5 hrs | 80.2 wks? | | | | | | | | | |
| 791 | 31% | 30% | Document Review and Solution Requirements | Mon 12-10-15 | Mon 13-05-20 | 334 hrs | 29.6 wks? | | | | | | | | | |
| 792 | 100% | 100% | EW - Schedule Team to Review | Mon 13-01-14 | Mon 13-01-14 | 2 hrs | 1 day | | re,EW Business Process Lead - PDD[25%] | | | | | | | |
| 793 | 100% | 100% | EW - Forward Updates | Tue 13-01-15 | Tue 13-01-15 | 2 hrs | 1 day | 792 | re,EW Business Process Lead - PDD[25%] | | | | | | | |
| 794 | 100% | 100% | Solution Requirements and customization Docs Sign-off | Fri 13-01-25 | Fri 13-01-25 | 2 hrs | 0.2 wks | | | | | | | | | |
| 795 | 100% | 100% | EW - Add to solution folder and let PM know | Fri 13-01-25 | Fri 13-01-25 | 2 hrs | 1 day | | Lead Business Consultant - Gabe D'Amore | | | | | | | |
| 796 | 100% | 100% | Review Integration Requirements Document | Fri 13-01-18 | Mon 13-01-21 | 20 hrs | 0.4 wks | | EW Business Process Lead - PDD | | | | | | | |
| 797 | 100% | 100% | EW - Schedule Team to Review | Fri 13-01-18 | Fri 13-01-18 | 2 hrs | 1 day | | Business Consultant - Gabe D'Amore[25%] | | | | | | | |
| 798 | 100% | 100% | EW - Forward Updates | Mon 13-01-21 | Mon 13-01-21 | 2 hrs | 1 day | 797 | Business Consultant - Gabe D'Amore[25%] | | | | | | | |
| 799 | 98% | 98% | Review Test Plan Document | Mon 13-01-21 | Fri 13-01-25 | 36 hrs | 1 wk | | | | | | | | | |
| 800 | 100% | 100% | EW - Train Core Team on Testing Methodology | Mon 13-01-21 | Mon 13-01-21 | 8 hrs | 1 day | | EW CIS DM/ODS - Nicole Richardson[50%] | | | | | | | |
| 801 | 100% | 100% | EW - Review eSupport Process | Tue 13-01-22 | Tue 13-01-22 | 4 hrs | 1 day | 800 | usiness Consultant,NS - Quality Assurance | | | | | | | |
| 802 | 100% | 100% | EW - Team to draft lists of test scenarios by area | Wed 13-01-23 | Thu 13-01-24 | 16 hrs | 2 days | 801 | ODS - Nicole Richardson,EW CIS MR - AL.. | | | | | | | |
| 803 | 90% | 90% | EW - Review Test Scenarios List Created by Team | Fri 13-01-25 | Fri 13-01-25 | 8 hrs | 1 day | 802 | EW Test Lead Gabe D'Amore[88%] | | | | | | | |
| 804 | 20% | 30% | Customer Connect Definition/Requirements Review | Mon 12-10-15 | Tue 13-02-19 | 12 hrs | 16.8 wks? | | | | | | | | | |
| 805 | 50% | 89% | EW - Review List of Customer connect services with team | Tue 13-02-12 | Wed 13-02-13 | 4 hrs | 2 days | | Katie Janisse[17%],EW CIS DM/ODS - N... | | | | | | | |
| 806 | 0% | 0% | EW - Review and confirm Test Plan | Fri 13-02-15 | Fri 13-02-15 | 4 hrs | 1 day | 805% | ,EW Business Process Lead - PDD[50%] | | | | | | | |
| 807 | 0% | 0% | EW - Team to draft list of test scenarios, review and update | Tue 13-02-19 | Tue 13-02-19 | 4 hrs | 1 day | 806 | Business Consultant - Gabe D'Amore[50%] | | | | | | | |
| 808 | 0% | 0% | | Mon 12-10-15 | Mon 12-10-15 | 0 hrs | 0.2 wks? | | | | | | | | | |
| 809 | 20% | 30% | mCare Definition/Requirements Review | Mon 12-10-15 | Tue 13-02-19 | 12 hrs | 16.8 wks? | | | | | | | | | |
| 810 | 50% | 89% | EW - Review List of mCare services with team | Tue 13-02-12 | Wed 13-02-13 | 4 hrs | 2 days | | Katie Janisse[17%],EW CIS DM/ODS - N... | | | | | | | |
| 811 | 0% | 0% | EW - Review and confirm Test Plan | Fri 13-02-15 | Fri 13-02-15 | 4 hrs | 1 day | 810% | ,EW Business Process Lead - PDD[50%] | | | | | | | |
| 812 | 0% | 0% | EW - Team to draft list of test scenarios, review and update | Tue 13-02-19 | Tue 13-02-19 | 4 hrs | 1 day | 811 | Business Consultant - Gabe D'Amore[50%] | | | | | | | |
| 813 | 0% | 0% | | Mon 12-10-15 | Mon 12-10-15 | 0 hrs | 0.2 wks? | | | | | | | | | |
| 814 | 25% | 30% | EIS Definition/Requirements Review | Tue 13-02-12 | Tue 13-02-19 | 12 hrs | 1 wk | | | | | | | | | |
| 815 | 50% | 89% | EW - Review List of EIS functionality with team | Tue 13-02-12 | Wed 13-02-13 | 4 hrs | 2 days | | Katie Janisse[17%],EW CIS DM/ODS - N... | | | | | | | |

EnWin EnStar Project Plan August 2, 2013

| ID | % Complete | % Work Complete | Task Name | Start | Finish | Work | Duration | Predecessors | Resource Names | er | October | November | December | | | |
|-----|------------|-----------------|--|--------------|--------------|---------|-----------|--------------|---|-------|---------|----------|----------|-------|-------|-------|
| 816 | 0% | 0% | EW - Review and confirm Test Plan | Fri 13-02-15 | Fri 13-02-15 | 4 hrs | 1 day | 815%] | EW Business Process Lead - PDD[50%] | 09-22 | 10-06 | 10-20 | 11-03 | 11-17 | 12-01 | 12-15 |
| 817 | 0% | 0% | EW - Team to draft list of test scenarios, review and update | Tue 13-02-19 | Tue 13-02-19 | 4 hrs | 1 day | 816 | Business Consultant - Gabe D'Amore[50%] | | | | | | | |
| 818 | | | | | | | | | | | | | | | | |
| 819 | | | | | | | | | | | | | | | | |
| 820 | 99% | 100% | Review Integration design Document | Tue 13-02-12 | Mon 13-03-25 | 4 hrs | 5.8 wks? | | | | | | | | | |
| 821 | 0% | 0% | Review Integration design Document | Tue 13-02-12 | Tue 13-02-12 | 0 hrs | 0 wks? | | | | | | | | | |
| 822 | 0% | 0% | Review Integration design Document | Mon 13-03-25 | Mon 13-03-25 | 0 hrs | 0 wks? | | | | | | | | | |
| 823 | 100% | 100% | EW - Ensure team is scheduled, gather supporting docs | Thu 13-03-21 | Mon 13-03-25 | 4 hrs | 3 days | | [8%],EW IT ODS / DM - Sharon Fedak[8%] | | | | | | | |
| 824 | 80% | 75% | Review Reports Design Document | Mon 13-01-28 | Mon 13-02-11 | 16 hrs | 2.2 wks | | | | | | | | | |
| 825 | 100% | 100% | EW - Create sublist of existing PS reports per SME, ensure SME | Mon 13-01-28 | Tue 13-01-29 | 4 hrs | 2 days | | EW Test Lead Gabe D'Amore[25%] | | | | | | | |
| 826 | 100% | 100% | EW - Team to gather supporting docs and existing reports | Wed 13-02-06 | Thu 13-02-07 | 8 hrs | 2 days | 825 | EW IT Reporting - Marilee Quinlan | | | | | | | |
| 827 | 0% | 0% | EW - Team to confirm with end users | Mon 13-02-11 | Mon 13-02-11 | 4 hrs | 1 day | 826 | Katie Janisse[50%],EW CIS DM/ODS - N... | | | | | | | |
| 828 | 0% | 0% | Review Customizations development and design document | Mon 12-10-15 | Fri 13-01-11 | 12 hrs | 11.6 wks? | | | | | | | | | |
| 829 | 0% | 0% | EW - Ensure team is scheduled and mods assigned to individuals, | Wed 13-01-09 | Fri 13-01-11 | 12 hrs | 3 days | | j - Charlene Spadotto[33%],EW Lead Bus... | | | | | | | |
| 830 | 0% | 0% | 1.5 Years of Historical Data Loading | Mon 12-10-15 | Mon 12-10-15 | 0 hrs | 0.2 wks? | | | | | | | | | |
| 833 | 0% | 0% | CT/PT Screen Changes | Mon 12-10-15 | Mon 12-10-15 | 0 hrs | 0.2 wks? | | | | | | | | | |
| 836 | 0% | 0% | Drawing Number Inclusions | Mon 12-10-15 | Mon 12-10-15 | 0 hrs | 0.2 wks? | | | | | | | | | |
| 839 | 0% | 0% | Orphaned Meter Report | Mon 12-10-15 | Mon 12-10-15 | 0 hrs | 0.2 wks? | | | | | | | | | |
| 842 | 0% | 0% | Configure and setup mCARE - Business Process Discussion wit | Tue 13-03-19 | Tue 13-03-19 | 8 hrs | 0.2 wks | | | | | | | | | |
| 843 | 0% | 0% | EW - List existing service orders, and ensure all existing service o | Tue 13-03-19 | Tue 13-03-19 | 8 hrs | 1 day | | dson[50%],EW CIS MR - Alicia Novak[50%] | | | | | | | |
| 844 | 0% | 0% | Configure and Setup EIS | Fri 13-03-01 | Tue 13-03-05 | 8 hrs | 0.6 wks | | | | | | | | | |
| 845 | 0% | 0% | EW - Discuss & list business processes, list users | Fri 13-03-01 | Tue 13-03-05 | 8 hrs | 3 days | | EW Training - Jan Winters | | | | | | | |
| 846 | 0% | 0% | Go-Live Approach Document | Fri 13-04-19 | Mon 13-05-20 | 176 hrs | 4.4 wks | | | | | | | | | |
| 847 | 0% | 0% | EW - Draft Enwin Go-Live Approach Doc (hi level) | Fri 13-04-19 | Mon 13-05-20 | 176 hrs | 4.4 wks | | EW IT Conversion - Christine Hales | | | | | | | |
| 848 | 100% | 100% | Meter to Transformer Relationships | Fri 13-03-01 | Fri 13-03-01 | 8 hrs | 0.2 wks | | | | | | | | | |
| 849 | 100% | 100% | EW - Create flat file from Maximo | Fri 13-03-01 | Fri 13-03-01 | 8 hrs | 1 day | | EW IT - Marc Ethier | | | | | | | |
| 850 | 100% | 100% | Water Service Shut Off data | Fri 13-03-01 | Fri 13-03-01 | 4 hrs | 0.2 wks? | | | | | | | | | |
| 851 | 100% | 100% | EW - Data conversion from Legacy | Fri 13-03-01 | Fri 13-03-01 | 4 hrs | 0.2 wks? | | EW IT - Marc Ethier[50%] | | | | | | | |
| 852 | 27% | 31% | IT Preparations for NS Support | Mon 13-01-14 | Mon 13-11-04 | 32 hrs | 41 wks | | | | | | | | | |
| 853 | 100% | 100% | Add-on server installation for CustConnect, EIS, mCare | Mon 13-01-14 | Fri 13-02-15 | 10 hrs | 5 wks | | | | | | | | | |
| 854 | 100% | 100% | EW - Ordering HW for Phys Arch Integration | Mon 13-01-14 | Fri 13-01-25 | 2 hrs | 2 wks | | EW Technical Lead - Kevin Baker[3%] | | | | | | | |
| 855 | 100% | 100% | EW - Install Physical HW for Add on servers | Mon 13-02-11 | Fri 13-02-15 | 8 hrs | 1 wk | | EW Technical Lead - Kevin Baker[20%] | | | | | | | |
| 856 | 0% | 0% | iPad training for field personell | Mon 13-09-23 | Mon 13-11-04 | 22 hrs | 6 wks | | | | | | | | | |
| 857 | 0% | 0% | EW - Setup 5-systems in training room for training prep, | Mon 13-09-30 | Mon 13-10-14 | 4 hrs | 2 wks | | EW Technical Lead - Kevin Baker[5%] | | | | | | | |
| 858 | 0% | 0% | EW - iPad ordering & availability for Aug 2013 | Mon 13-09-23 | Mon 13-10-14 | 6 hrs | 3 wks | | EW Technical Lead - Kevin Baker[5%] | | | | | | | |
| 859 | 0% | 0% | EW - Set-up all remaining systems required for training of field pe | Tue 13-10-15 | Mon 13-11-04 | 12 hrs | 3 wks | 857,858 | EW Technical Lead - Kevin Baker[10%] | | | | | | | |
| 860 | 0% | 0% | EW - Cancelling of ePost contract (reminder) | Mon 13-09-09 | Fri 13-09-20 | 3.2 hrs | 2 wks | | 2%],EW Business Process Lead - PDD[2%] | | | | | | | |

0%

0%

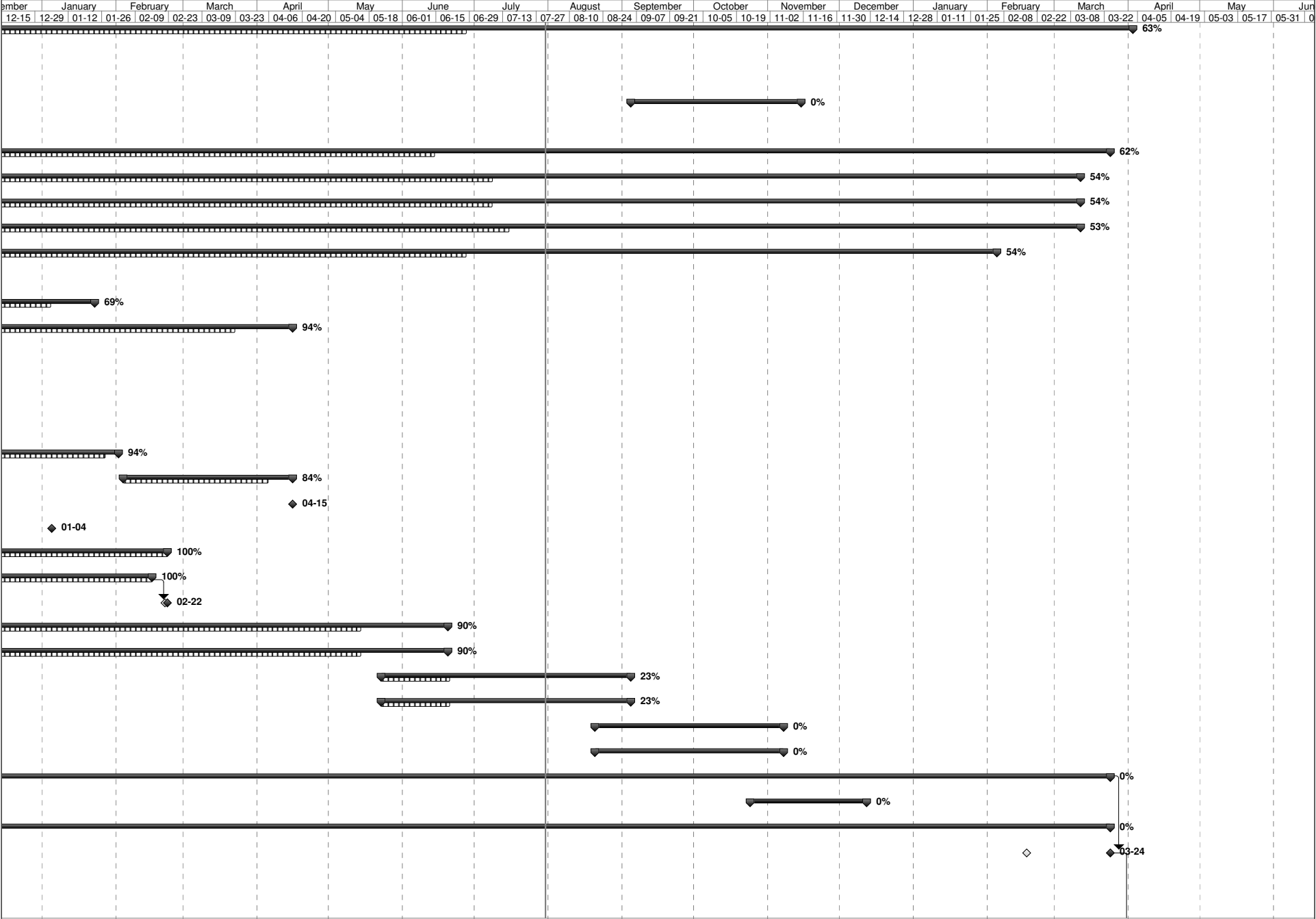
0%

0%

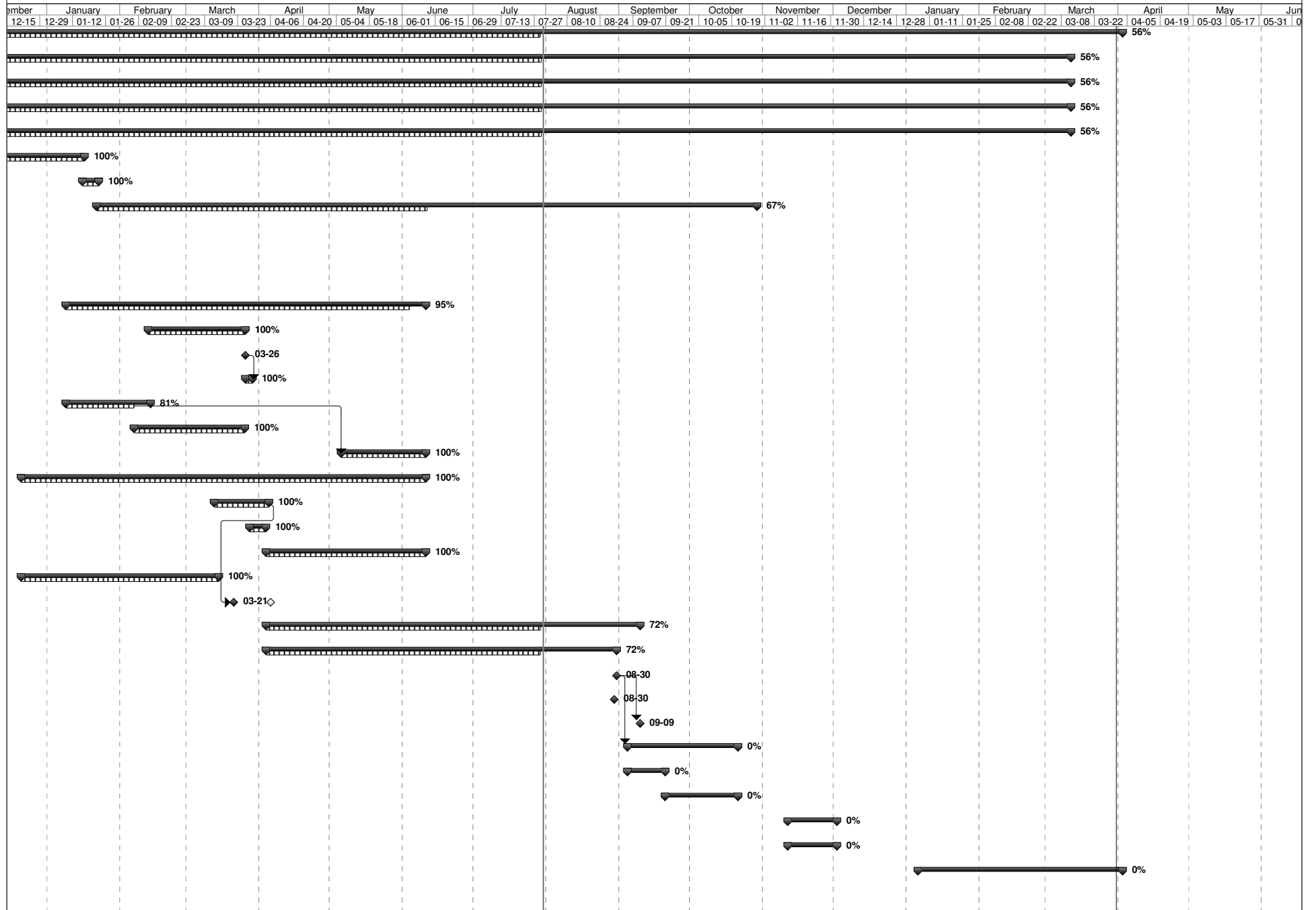
EnWin EnStar Project Plan August 2, 2013

| ID | % Complete | % Work Complete | Task Name | Start | Finish | Work | Duration | Predecessors | Resource Names | er | October | November | December | | | |
|-----|------------|-----------------|---|--------------|--------------|-------------|-----------|--------------|---------------------------------------|-------|---------|----------|----------|-------|-------|-------|
| 861 | 32% | 25% | Additional I.T. Tasks | Fri 13-02-01 | Tue 13-09-24 | 1,552.5 hrs | 32.6 wks | | | 09-22 | 10-06 | 10-20 | 11-03 | 11-17 | 12-01 | 12-15 |
| 872 | | | | | | | | | | | | | | | | |
| 873 | 14% | 34% | Cut Over Planning & Preparation | Mon 13-03-04 | Wed 14-05-21 | 130 hrs | 61.8 wks | | | | | | | | | |
| 879 | | | | | | | | | | | | | | | | |
| 880 | 5% | 6% | Post Go Live Support | Tue 13-03-26 | Wed 13-07-17 | 168 hrs | 16 wks | | | | | | | | | |
| 885 | | | | | | | | | | | | | | | | |
| 886 | 4% | 0% | Communication Plan Strategy | Mon 13-03-25 | Wed 14-04-30 | 76.8 hrs | 55.8 wks? | | | | | | | | | |
| 887 | 100% | 100% | Selection | Mon 13-03-25 | Thu 13-04-11 | 0 hrs | 2.8 wks | | | | | | | | | |
| 891 | 75% | 0% | Budget Approval by Board | Fri 13-04-12 | Fri 13-04-19 | 0 hrs | 1.2 wks | | | | | | | | | |
| 894 | 0% | 0% | Weekly Update Meetings with Communication Partner | Fri 13-04-12 | Wed 14-04-30 | 0 hrs | 53 wks | 890 | | | | | | | | |
| 895 | 0% | 0% | Scope, Strategy and Message Development | Fri 13-04-12 | Mon 13-07-08 | 0 hrs | 12 wks | | | | | | | | | |
| 899 | 0% | 0% | Communication | Tue 13-04-30 | Fri 13-11-29 | 76.8 hrs | 29.6 wks? | | | | | | | | | |
| 900 | 0% | 0% | Customer account number change | Mon 13-07-29 | Fri 13-08-30 | 76.8 hrs | 4.8 wks | | PM[10%],EW Proj Mgr - Joe Sarkis[10%] | | | | | | | |
| 902 | 0% | 0% | TOU and Customer Connect | Tue 13-07-09 | Tue 13-07-09 | 0 hrs | 0.2 wks? | | | | | | | | | |
| 905 | 0% | 0% | Bill Presentment and Rates | Tue 13-04-30 | Fri 13-11-29 | 0 hrs | 29.6 wks? | | | | | | | | | |
| 916 | 0% | 0% | WADU Message Communication | Tue 13-07-09 | Tue 13-07-09 | 0 hrs | 0.2 wks? | 898 | | | | | | | | |
| 917 | 0% | 0% | CIS System Change Communication | Tue 13-07-09 | Tue 13-07-09 | 0 hrs | 0.2 wks? | 898 | | | | | | | | |
| 918 | | | | | | | | | | | | | | | | |
| 919 | 0% | 0% | Business Continuity | Wed 13-05-01 | Mon 13-08-19 | 214 hrs | 15.2 wks | | | | | | | | | |
| 924 | | | | | | | | | | | | | | | | |
| 925 | 68% | 20% | Business Process Development | Fri 13-02-01 | Thu 13-09-05 | 41 hrs | 30 wks? | | | | | | | | | |
| 926 | 100% | 100% | Business Process Development | Fri 13-02-01 | Fri 13-02-01 | 0 hrs | 0 wks? | | | | | | | | | |
| 927 | 100% | 100% | Review Current EnWin Business Processes | Fri 13-02-01 | Fri 13-02-22 | 0 hrs | 3 wks | | | | | | | | | |
| 928 | 100% | 100% | Review Of EARTH and NS business processes | Fri 13-02-08 | Fri 13-04-05 | 0 hrs | 8 wks | | | | | | | | | |
| 929 | 0% | 0% | Formalize Integration of MS / CC / EIS / mCARE | Mon 13-04-01 | Fri 13-04-05 | 0 hrs | 1 wk | | | | | | | | | |
| 930 | 22% | 20% | Gap Analysis | Fri 13-04-05 | Thu 13-05-02 | 41 hrs | 3.95 wks? | | | | | | | | | |
| 940 | 100% | 100% | Define Required Changes | Tue 13-04-30 | Mon 13-05-13 | 0 hrs | 2 wks | | | | | | | | | |
| 944 | 100% | 100% | Categorize Business Processes | Tue 13-05-14 | Fri 13-05-17 | 0 hrs | 0.8 wks | | | | | | | | | |
| 948 | 91% | 0% | Redesign With Line Orgs. | Wed 13-05-08 | Thu 13-07-04 | 0 hrs | 8 wks? | | | | | | | | | |
| 957 | 20% | 0% | Staff and Execute | Fri 13-07-05 | Thu 13-09-05 | 0 hrs | 8.6 wks | 956 | | | | | | | | |

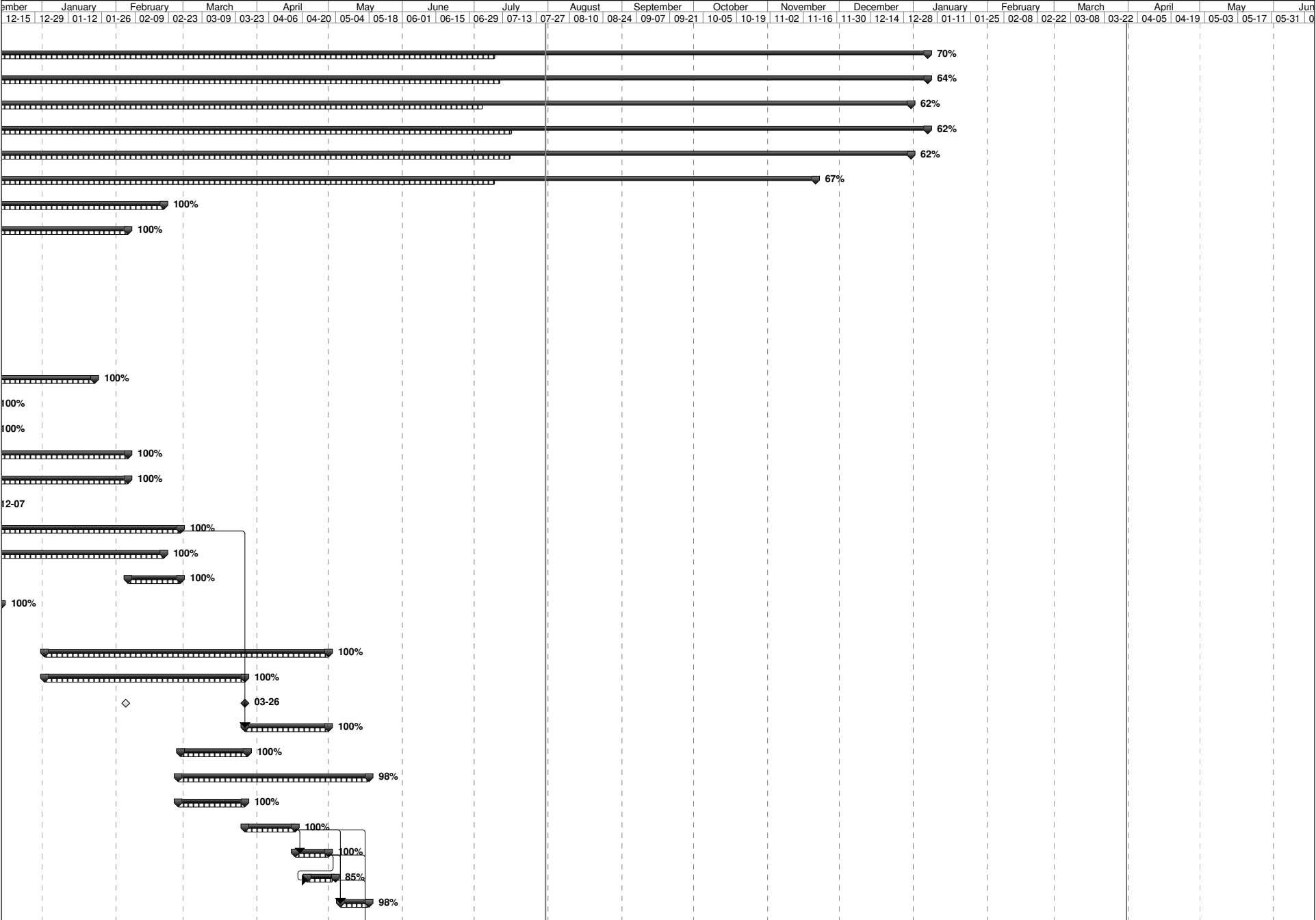
EnWin EnStar Project Plan August 2, 2013

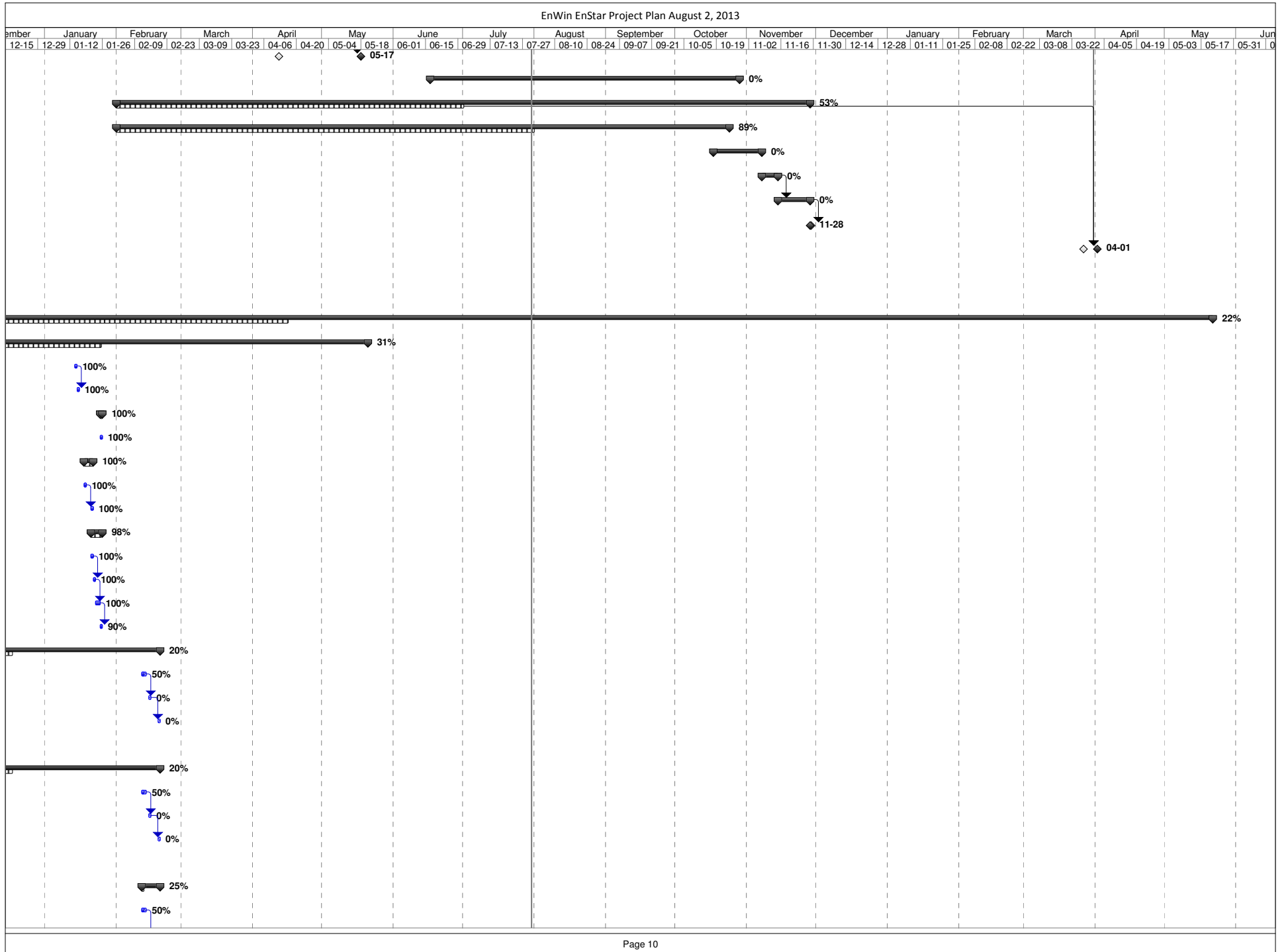


EnWin EnStar Project Plan August 2, 2013



EnWin EnStar Project Plan August 2, 2013





[illegible]

EnWin EnStar Project Plan August 2, 2013

The chart displays a project plan with tasks and their durations. The timeline spans from December 2012 to June 2013. Key tasks and their progress are as follows:

- 02-01**: 100% complete (blue bar)
- 02-02**: 100% complete (blue bar)
- 02-03**: 100% complete (blue bar)
- 02-04**: 100% complete (blue bar)
- 02-05**: 100% complete (blue bar)
- 02-06**: 100% complete (blue bar)
- 02-07**: 100% complete (blue bar)
- 02-08**: 100% complete (blue bar)
- 02-09**: 100% complete (blue bar)
- 02-10**: 100% complete (blue bar)
- 02-11**: 100% complete (blue bar)
- 02-12**: 100% complete (blue bar)
- 02-13**: 100% complete (blue bar)
- 02-14**: 100% complete (blue bar)
- 02-15**: 100% complete (blue bar)
- 02-16**: 100% complete (blue bar)
- 02-17**: 100% complete (blue bar)
- 02-18**: 100% complete (blue bar)
- 02-19**: 100% complete (blue bar)
- 02-20**: 100% complete (blue bar)
- 02-21**: 100% complete (blue bar)
- 02-22**: 100% complete (blue bar)
- 02-23**: 100% complete (blue bar)
- 02-24**: 100% complete (blue bar)
- 02-25**: 100% complete (blue bar)
- 02-26**: 100% complete (blue bar)
- 02-27**: 100% complete (blue bar)
- 02-28**: 100% complete (blue bar)
- 02-29**: 100% complete (blue bar)
- 02-30**: 100% complete (blue bar)
- 02-31**: 100% complete (blue bar)
- 02-32**: 100% complete (blue bar)
- 02-33**: 100% complete (blue bar)
- 02-34**: 100% complete (blue bar)
- 02-35**: 100% complete (blue bar)
- 02-36**: 100% complete (blue bar)
- 02-37**: 100% complete (blue bar)
- 02-38**: 100% complete (blue bar)
- 02-39**: 100% complete (blue bar)
- 02-40**: 100% complete (blue bar)
- 02-41**: 100% complete (blue bar)
- 02-42**: 100% complete (blue bar)
- 02-43**: 100% complete (blue bar)
- 02-44**: 100% complete (blue bar)
- 02-45**: 100% complete (blue bar)
- 02-46**: 100% complete (blue bar)
- 02-47**: 100% complete (blue bar)
- 02-48**: 100% complete (blue bar)
- 02-49**: 100% complete (blue bar)
- 02-50**: 100% complete (blue bar)
- 02-51**: 100% complete (blue bar)
- 02-52**: 100% complete (blue bar)
- 02-53**: 100% complete (blue bar)
- 02-54**: 100% complete (blue bar)
- 02-55**: 100% complete (blue bar)
- 02-56**: 100% complete (blue bar)
- 02-57**: 100% complete (blue bar)
- 02-58**: 100% complete (blue bar)
- 02-59**: 100% complete (blue bar)
- 02-60**: 100% complete (blue bar)
- 02-61**: 100% complete (blue bar)
- 02-62**: 100% complete (blue bar)
- 02-63**: 100% complete (blue bar)
- 02-64**: 100% complete (blue bar)
- 02-65**: 100% complete (blue bar)
- 02-66**: 100% complete (blue bar)
- 02-67**: 100% complete (blue bar)
- 02-68**: 100% complete (blue bar)
- 02-69**: 100% complete (blue bar)
- 02-70**: 100% complete (blue bar)
- 02-71**: 100% complete (blue bar)
- 02-72**: 100% complete (blue bar)
- 02-73**: 100% complete (blue bar)
- 02-74**: 100% complete (blue bar)
- 02-75**: 100% complete (blue bar)
- 02-76**: 100% complete (blue bar)
- 02-77**: 100% complete (blue bar)
- 02-78**: 100% complete (blue bar)
- 02-79**: 100% complete (blue bar)
- 02-80**: 100% complete (blue bar)
- 02-81**: 100% complete (blue bar)
- 02-82**: 100% complete (blue bar)
- 02-83**: 100% complete (blue bar)
- 02-84**: 100% complete (blue bar)
- 02-85**: 100% complete (blue bar)
- 02-86**: 100% complete (blue bar)
- 02-87**: 100% complete (blue bar)
- 02-88**: 100% complete (blue bar)
- 02-89**: 100% complete (blue bar)
- 02-90**: 100% complete (blue bar)
- 02-91**: 100% complete (blue bar)
- 02-92**: 100% complete (blue bar)
- 02-93**: 100% complete (blue bar)
- 02-94**: 100% complete (blue bar)
- 02-95**: 100% complete (blue bar)
- 02-96**: 100% complete (blue bar)
- 02-97**: 100% complete (blue bar)
- 02-98**: 100% complete (blue bar)
- 02-99**: 100% complete (blue bar)
- 02-100**: 100% complete (blue bar)