

Smart Meter Time of Use

EnWin Utilities Ltd

For the Period to: 30-Sep-13

RPP Eligible Consumers:

Description	Residential	GS < 50kW Class	Total
Total Number of RPP-eligible consumers	77,574	7,166	84,740
Number of smart meters installed in the period	23	47	70
Number of smart meters registered with the MDM/R in the period	0	0	0
Number of RPP consumers being charged TOU prices added in the period	0	0	0
Total cumulative number of smart meters installed in the service area at the end of the period	78,177	7,542	85,719
Total cumulative number of smart meters registered with the MDM/R at the end of the period	0	0	0
Total cumulative number of consumers being charged TOU prices at the end of the period	0	0	0

Progress Report on SME Milestones

Activity	Original Scheduled Completion Date	Status	Expected Completion Date	Actual Completion Date
1. AMCC Internal Testing		Complete	July 30, 2010	July 30, 2010

Activity	Original Scheduled Completion Date	Status	Expected Completion Date	Actual Completion Date
2. CIS Internal Testing	September 4, 2013	Behind Schedule	December 13, 2013	

Activity	Yes or No?	Expected Completion Date	Actual Completion Date
3. MDM/R Registration Application submitted	Yes	January 1, 2010	January 1, 2010

Activity	Yes or No?	Status, if Yes	Expected Completion Date	Actual Completion Date
4. Enrolment Wave requested and confirmed (Note: the SME will either confirm the requested start date or suggest an alternate)	Yes	Complete	March 25, 2013	January 23, 2013

Activity	Original Scheduled Completion Date	Status	Expected Completion Date	Actual Completion Date
5. Unit Testing	September 12, 2013	Complete	September 12, 2013	September 27, 2013

Activity	Original Scheduled Completion Date	Status	Expected Completion Date	Actual Completion Date
6. Submitted a completed Self Certification for Enrolment Testing SME_FORM_0007 (Note: This must be submitted at least one week prior to the confirmed enrolment wave start date)	August 26, 2013	Behind Schedule	October 30, 2013	

Activity	Original Scheduled Completion Date	Status	Expected Completion Date	Actual Completion Date
7. System Integration Testing (SIT)	September 18, 2013	Behind Schedule	November 1, 2013	

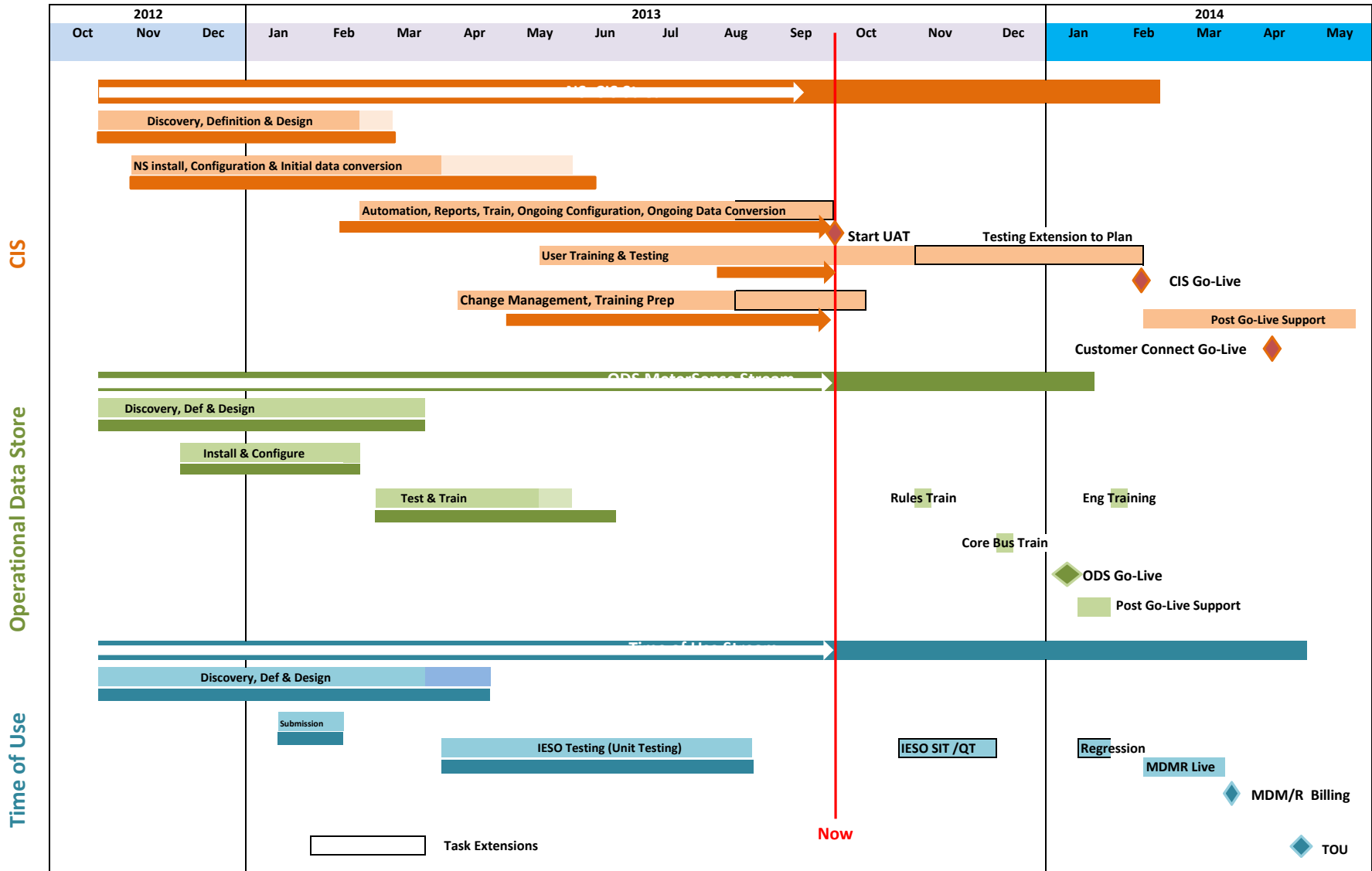
Activity	Original Scheduled Completion Date	Status	Expected Completion Date	Actual Completion Date
8. Qualification Testing (QT)	October 17, 2013	Behind Schedule	November 29, 2013	

Activity	Original Scheduled Completion Date	Status	Expected Completion Date	Actual Completion Date
9. Self Certification - Cutover	November 28, 2013	Behind Schedule	March 17, 2014	

Activity	Original Scheduled Completion Date	Status	Expected Completion Date	Actual Completion Date
10. Transition to Production Operations	March 26, 2014	Behind Schedule	April 28, 2014	

Additional Comments and Information

EnWin expects to meet the requirement to apply TOU pricing under the Standard Supply Service Code to all of its customers by April 30, 2014 as approved in application EB-2012-0405



ID	% Complete	% Work Complete	Task Name	Start	Finish	September		November		January	
						09-08	10-06	11-03	12-01	12-29	01
1	68%	59%	Draft EnWin NorthStar Implementation Project Plan	Mon 12-10-15	Wed 14-06-25						
2											
3	100%	100%	START DATE (Tentative - Would need to be confirmed and reviewed at Contract Signature)	Mon 12-10-15	Mon 12-10-15		◆ 10-15				
4	0%	0%	Milestone Validation section	Wed 13-09-04	Thu 14-02-20						
5	0%	0%	CIS Accepted Solution (fixed)	Wed 13-09-04	Wed 13-09-04						
6	0%	0%	CIS Accepted Solution tracked	Fri 13-12-20	Fri 13-12-20						
7	0%	0%	CIS Go-Live (Fixed)	Mon 13-11-11	Mon 13-11-11						
8	0%	0%	CIS Go-Live tracked	Tue 14-02-18	Tue 14-02-18						
9	0%	0%	ERTH QT Complete (Fixed)	Mon 13-10-21	Mon 13-10-21						
10	0%	0%	ERTH QT Complete tracked	Fri 13-12-06	Fri 13-12-06						
11	0%	0%	MS Solution Live (fixed)	Thu 13-11-14	Thu 13-11-14						
12	0%	0%	MS Solution Live tracked	Thu 14-02-20	Thu 14-02-20						
13											
14	68%	53%	CIS Project	Mon 12-10-15	Wed 14-06-25						
15	56%	56%	Project Management	Mon 12-10-15	Tue 14-03-11						
16	56%	55%	Project Management / Technical Oversight / IT Environment Support	Mon 12-10-15	Tue 14-03-11						
20	55%	55%	Communication Management	Mon 12-10-15	Tue 14-03-11						
25	56%	59%	Risk Management	Mon 12-10-15	Tue 14-02-04						
28	100%	100%	Project Plan	Mon 12-10-15	Fri 12-11-16						
33	69%	42%	Deliverable/Acceptance Management	Mon 12-11-19	Tue 13-01-22						
39	96%	99%	Solution Definition Phase	Mon 12-10-15	Mon 13-09-09						
40	100%	100%	Project Preparation	Mon 12-10-15	Fri 12-10-19		100%				
43	100%	100%	Project Kick-Off	Mon 12-10-15	Tue 12-10-23		100%				
47	100%	100%	NorthStar Product Orientation Session - Training	Mon 12-10-15	Thu 12-10-25		100%				
51	100%	100%	Discovery	Mon 12-10-15	Wed 12-11-07		100%				
59	94%	97%	CIS Definition	Thu 12-11-08	Mon 13-09-09						
102	97%	98%	Customer Connect Definition	Mon 13-02-04	Mon 13-04-15						
112	100%	100%	NS - Milestone - CustomerConnect requirements document finalized.	Mon 13-04-15	Mon 13-04-15						
113	100%	100%	NS - Invoice Milestone - Sign off on Requirements Documents	Fri 13-01-04	Fri 13-01-04					◆ 01-04	
114	100%	100%	Solution Design Phase	Mon 12-10-15	Fri 13-02-22						
115	100%	100%	CIS Design	Mon 12-10-15	Fri 13-02-15						
161	100%	100%	NS - Milestone - Solution Design Complete	Fri 13-02-22	Fri 13-02-22						
162	96%	98%	Solution Configuration and Construction Phase	Mon 12-11-05	Wed 13-06-19						
163	96%	98%	CIS Configuration and Construction	Mon 12-11-05	Wed 13-06-19						
291	68%	36%	Solution Validation Phase	Thu 13-05-23	Fri 13-12-20						
292	68%	36%	CIS Validation	Thu 13-05-23	Fri 13-12-20						
293	100%	100%	Testing Environment	Thu 13-05-23	Fri 13-09-27						
297	100%	100%	Conversion Activities	Fri 13-06-07	Tue 13-07-16						
303	91%	98%	Functional Testing	Fri 13-06-07	Wed 13-09-18						

ID	% Complete	% Work Complete	Task Name	Start	Finish	September		November		January	
						09-08	10-06	11-03	12-01	12-29	01
304	100%	100%	NS - Perform Functional Testing	Fri 13-06-07	Fri 13-07-12						
305	95%	95%	NS - Bug Resolution	Fri 13-06-07	Wed 13-09-18						
306	85%	85%	NS - Publish Functional Testing Results	Fri 13-06-07	Wed 13-09-18						
307	0%	0%	NS - Deliverable - Functional Test Results	Wed 13-09-18	Wed 13-09-18						
308	87%	91%	Conversion Testing	Fri 13-06-07	Wed 13-09-25						
309	100%	100%	NS - Perform Conversion Testing	Fri 13-06-07	Mon 13-07-08						
310	85%	85%	NS - Bug Resolution	Fri 13-06-07	Wed 13-09-25						
311	85%	85%	NS - Publish Conversion Testing Results	Fri 13-06-07	Wed 13-09-25						
312	0%	0%	NS - Deliverable - Conversion Test Results	Wed 13-09-25	Wed 13-09-25						
313	100%	100%	Integration Testing	Tue 13-08-06	Wed 13-09-18						
314	100%	100%	NS - Perform Integration Testing	Tue 13-08-06	Tue 13-09-17						
315	100%	100%	NS - Bug Resolution	Tue 13-08-06	Tue 13-09-17						
316	100%	100%	NS - Publish Integration Testing Results	Tue 13-08-06	Tue 13-09-17						
317	100%	100%	NS - Deliverable - Integration Test Results	Wed 13-09-18	Wed 13-09-18						
318	61%	89%	Enhanced ERTH Testing	Fri 13-07-12	Thu 13-12-05						
319	100%	100%	ER - Setup Retailer Environment	Fri 13-07-12	Tue 13-07-16						
320	90%	90%	ER - Perform Enhanced Testing	Fri 13-07-12	Tue 13-09-24						
321	90%	90%	NS - Bug Resolution	Fri 13-07-12	Tue 13-09-24						
322	0%	0%	ER - Publish Testing Results	Wed 13-09-25	Thu 13-12-05						
323	0%	0%	ER - Deliverable - Enhanced ERTH Testing Results	Tue 13-09-24	Tue 13-09-24						
324	76%	56%	Additional EnWin Requirements/Functionality Validation	Thu 13-06-20	Tue 13-09-24						
325	0%	0%	Automation Platform Validation	Mon 13-08-26	Mon 13-09-09						
335	90%	90%	Reports Validation	Thu 13-06-20	Mon 13-09-09						
344	100%	100%	Integration Unit Testing	Thu 13-06-20	Tue 13-07-09						
359	100%	100%	Development Work Validation	Thu 13-06-20	Thu 13-06-27						
360	100%	100%	NS - Billing and Invoicing - Core CIS	Thu 13-06-20	Mon 13-06-24						
361	100%	100%	NS - Billing and Invoicing - Bill Print enhancements	Mon 13-06-24	Wed 13-06-26						
362	100%	100%	NS - Contract Accounting	Thu 13-06-27	Thu 13-06-27						
363	0%	0%	NS - Publish Testing Results	Tue 13-09-10	Tue 13-09-10						
364	0%	0%	NS - Deliverable - Additional EnWin Requirements / Functionality Validation Test Results Results	Tue 13-09-10	Tue 13-09-10						
365	100%	100%	NS - User/admin Setup, Security set up and testing/training	Mon 13-09-23	Tue 13-09-24						
366	29%	87%	Training - Core Team Functional and Process Training	Wed 13-07-10	Fri 13-12-20						
367	16%	85%	ER - ERTH Supplied Training Material	Wed 13-07-10	Thu 13-11-21						
368	100%	100%	NS - Prepare Test/Core Team Functional and Process Training	Tue 13-08-27	Fri 13-09-06						
369	100%	100%	NS - Hold Test/Core Team Functional and Process Training (2 week - Training)	Mon 13-09-09	Fri 13-09-20						

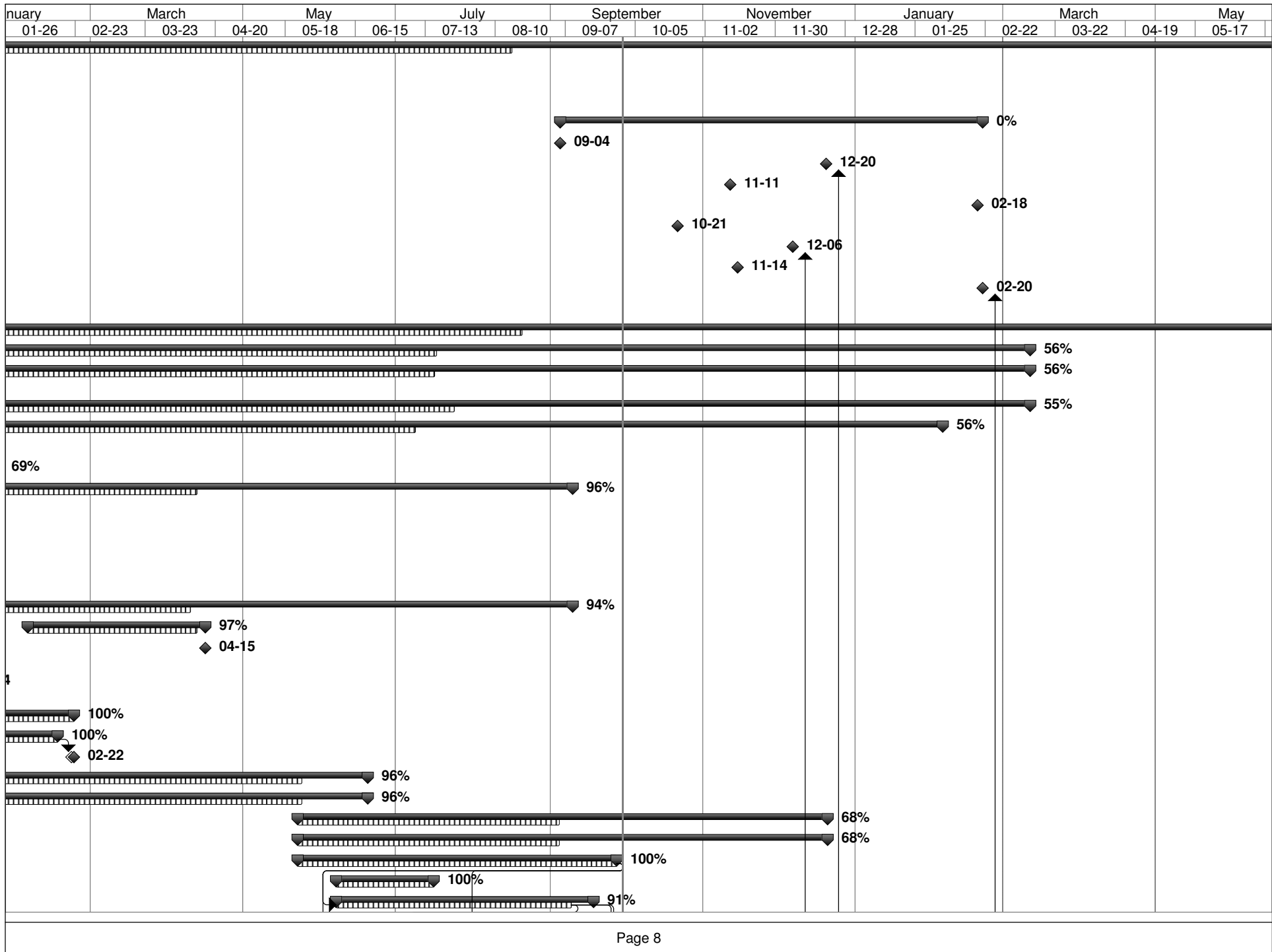
ID	% Complete	% Work Complete	Task Name	Start	Finish	September		November		January	
						09-08	10-06	11-03	12-01	12-29	01
370	100%	100%	NS - Deliverable - Test/Core Team Functional and Process Training	Fri 13-09-20	Fri 13-09-20						
371	30%	24%	Load Testing	Wed 13-09-25	Fri 13-12-20						
372	50%	50%	NS - Preparation of Users and Environment for conducting Load Testing	Wed 13-09-25	Thu 13-10-17						
373	0%	0%	NS - Conduct load test (multiple iterations as required):	Sun 13-10-20	Fri 13-12-20						
374	0%	0%	NS - Conduct test	Sun 13-10-20	Wed 13-10-23						
375	0%	0%	NS - Review results	Thu 13-10-24	Thu 13-10-24						
376	0%	0%	NS - Re-run Testing	Mon 13-12-16	Fri 13-12-20						
377	3%	1%	User Acceptance Testing	Thu 13-09-26	Fri 13-12-20						
378	0%	0%	NS - Perform User Acceptance Testing (CIS, Reports Anywhere, Customer[Connect])	Thu 13-09-26	Fri 13-12-20						
379	0%	0%	ER - Retailer Parallel Billing	Fri 13-11-08	Fri 13-11-22						
380	0%	0%	ER - Deliverable - Retailer Parallel Billing Test Results	Fri 13-11-22	Fri 13-11-22						
381	10%	10%	NS - Support Customer during User Acceptance Testing	Thu 13-09-26	Fri 13-12-20						
382	0%	0%	NS - Bug Resolution	Thu 13-09-26	Fri 13-12-20						
383	0%	0%	NS - Invoice Milestone - Accepted Solution	Fri 13-12-20	Fri 13-12-20						
384	0%	0%	NS - Deliverable - Accepted Source Code and Executable	Fri 13-12-20	Fri 13-12-20						
385	7%	3%	Solution Transition Readiness Phase	Tue 13-10-15	Fri 14-02-28						
386	7%	3%	CIS Transition Readiness	Tue 13-10-15	Fri 14-02-28						
413	0%	0%	CIS Solution Go-Live Phase	Mon 12-10-15	Wed 14-06-25						
414	0%	0%	CIS Go-Live	Tue 13-12-03	Tue 14-04-15						
440	0%	0%	Post-Go-Live	Mon 12-10-15	Wed 14-06-25						
453	0%	0%	NS - NorthStar CIS Project Implementation End Date	Wed 14-06-25	Wed 14-06-25						
454											
455											
456	60%	69%	MDM/R Project	Mon 12-10-15	Tue 14-05-20						
457	58%	61%	Project Management	Mon 12-10-15	Tue 14-03-11						
458	58%	58%	Project Management	Mon 12-10-15	Tue 14-03-11						
461	58%	58%	Communication Management	Mon 12-10-15	Tue 14-03-11						
464	58%	58%	Risk Management	Mon 12-10-15	Tue 14-03-11						
466	100%	100%	IESO Project Plan	Mon 12-11-26	Wed 13-01-16						
472	100%	100%	Initial MDM/R Registration Activities	Wed 13-01-16	Tue 13-01-22						
480	25%	22%	Ongoing MDM/R Registration Activities	Tue 13-01-22	Mon 14-02-10						
481	100%	100%	ER - Receive Network Connectivity Information	Tue 13-01-22	Tue 13-01-22						
482	100%	100%	ER - Submit MDM/R File Transfer Services Configuration Form (0014)	Fri 13-03-15	Fri 13-03-15						
483	100%	100%	ER - Submit Updated IESO Project Plan, if Required	Wed 13-04-03	Wed 13-04-03						
484	100%	100%	ER - Submit User Access Request Forms (013)	Wed 13-04-03	Wed 13-04-03						

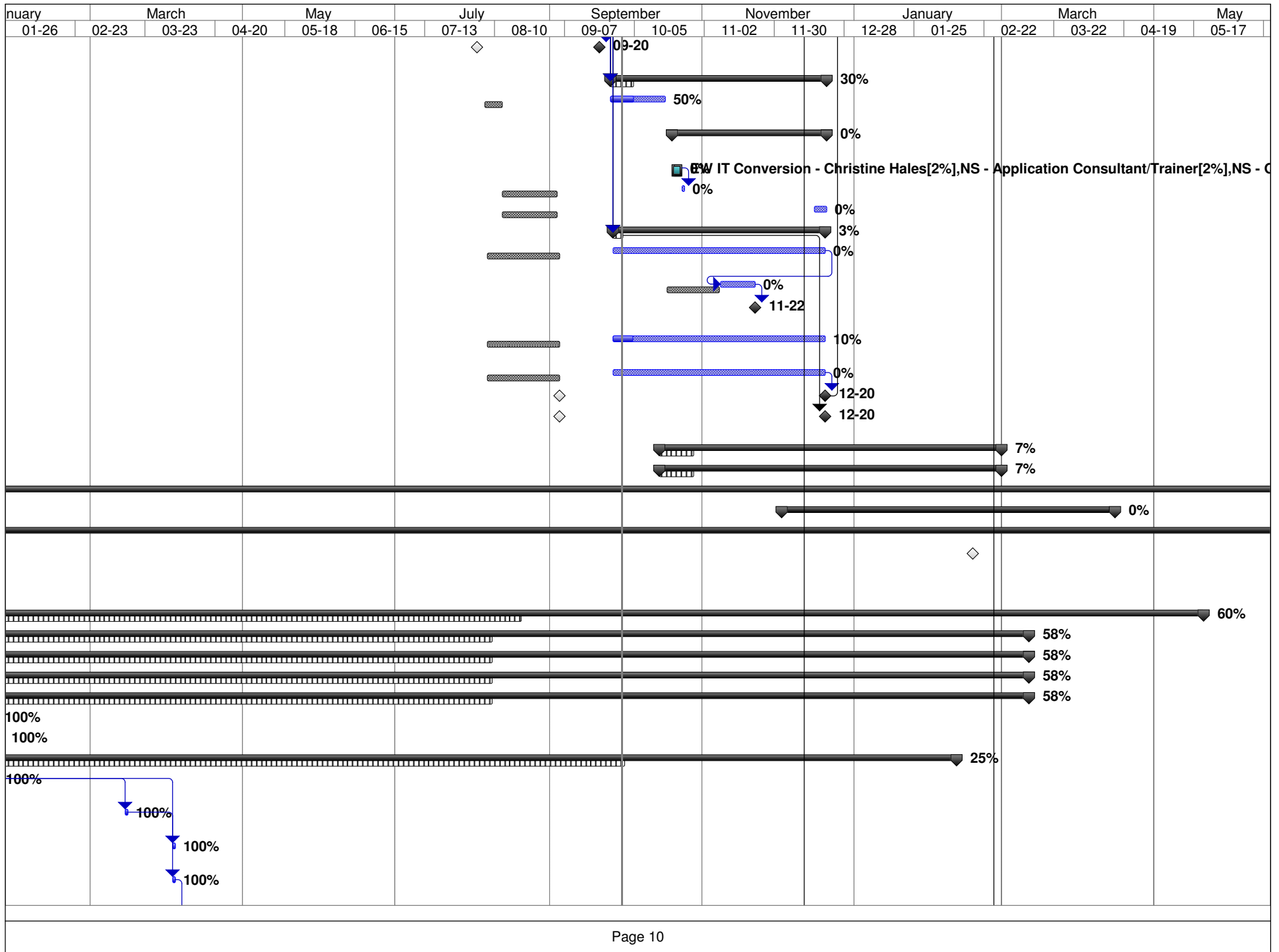
ID	% Complete	% Work Complete	Task Name	Start	Finish	September		November		January	
						09-08	10-06	11-03	12-01	12-29	01
485	100%	100%	ER - Receive GUI Access Information	Thu 13-04-04	Thu 13-04-11						
486	0%	0%	ER - Prepare Cutover Strategy	Wed 13-12-18	Mon 14-01-20						
487	0%	0%	ER - Submit Cutover Strategy	Mon 14-01-20	Mon 14-01-20						
488	0%	0%	ER - Prepare and submit Self Certification for Enrolment Testing Form (007)	Mon 13-10-14	Mon 13-10-14						
489	0%	0%	ER - Receive Acceptance for Enrolment Testing	Tue 13-10-22	Tue 13-10-22						
490	0%	0%	ER - Prepare Self-Certification - Cutover Readiness Self-Assessment Form (008)	Mon 14-02-03	Fri 14-02-07						
491	0%	0%	ER - Submit Self-Certification - Cutover Readiness Self-Assessment Form (008)	Mon 14-02-10	Mon 14-02-10						
492	0%	0%	ER - Receive Acceptance for Cutover Readiness	Mon 14-02-10	Mon 14-02-10						
493	100%	100%	Solution Definition Phase	Mon 12-10-15	Tue 12-11-13						
494	100%	100%	Project Kick-Off	Mon 12-10-15	Tue 12-10-23						
497	100%	100%	Discovery	Wed 12-10-24	Tue 12-11-13						
503	100%	100%	Solution Design Phase	Wed 13-01-09	Mon 13-06-10						
504	100%	100%	Business Process Changes Review	Wed 13-02-13	Tue 13-03-26						
511	100%	100%	ER - Milestone - Business Process Changes Completed	Tue 13-03-26	Tue 13-03-26						
512	100%	100%	CIS Design Document	Tue 13-03-26	Fri 13-03-29						
514	100%	100%	Unit Test Planning	Wed 13-01-09	Wed 13-02-13						
522	100%	100%	Cutover Planning	Thu 13-02-07	Mon 13-03-25						
529	100%	100%	Staff Training	Mon 13-05-06	Mon 13-06-10						
537	100%	100%	Solution Construction Phase	Fri 12-12-21	Mon 13-06-10						
538	100%	100%	CIS Implementation	Wed 13-03-13	Fri 13-04-05						
542	100%	100%	Metersense Implementation	Thu 13-03-28	Wed 13-04-03						
544	100%	100%	mCARE Implementation	Wed 13-04-03	Mon 13-06-10						
547	100%	100%	AS2 Server Configuration	Fri 12-12-21	Thu 13-03-14						
553	100%	100%	ER - Milestone - Completed All System Installations and C	Thu 13-03-21	Thu 13-03-21						
554	95%	96%	Solution Validation Phase	Thu 13-04-04	Tue 13-10-22						
555	95%	96%	Unit Testing with IESO	Thu 13-04-04	Tue 13-10-22						
588	95%	95%	ER - Milestone - Unit Testing Completed	Fri 13-08-30	Fri 13-08-30						
589	95%	95%	MDM/R Checkpoint - Unit Testing Completed	Fri 13-08-30	Fri 13-08-30						
590	95%	95%	ER - Deliverable - MDM/R Unit Testing Results	Mon 13-09-09	Mon 13-09-09						
591	0%	0%	Solution Transition Readiness	Fri 13-09-20	Fri 14-01-31						
592	0%	0%	MDMR Enrolment - SIT	Fri 13-09-20	Fri 13-11-08						
593	0%	0%	ER - SIT environment preparation (UPG PROD Alignment/)	Fri 13-09-20	Thu 13-09-26						
594	0%	0%	ER - Regression Test	Fri 13-10-04	Fri 13-10-25						
595	0%	0%	ER - SIT Execution - EnWin	Mon 13-10-28	Fri 13-11-08						
596	0%	0%	ER - SIT Execution Support	Mon 13-10-28	Fri 13-11-08						
597	0%	0%	ER - Daily Conference Calls	Mon 13-10-28	Fri 13-11-08						
598	0%	0%	ER - Milestone - SIT Completed	Fri 13-11-08	Fri 13-11-08						

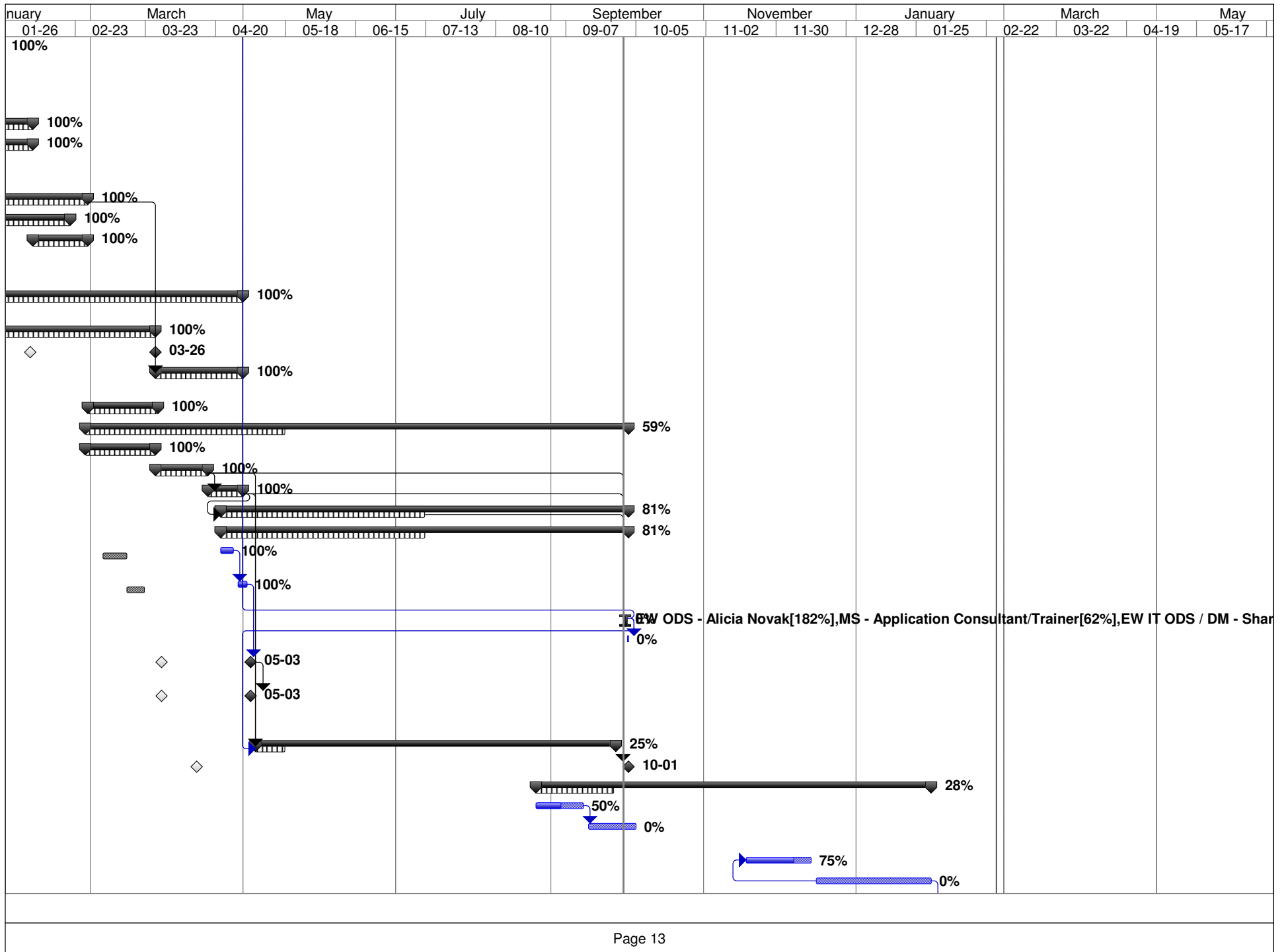
ID	% Complete	% Work Complete	Task Name	Start	Finish	September		November		January
						09-08	10-06	11-03	12-01	12-29
599	0%	0%	MDM/R Checkpoint - SIT Complete	Fri 13-11-08	Fri 13-11-08					
600	0%	0%	MDMR Enrolment - QT	Mon 13-11-11	Fri 13-12-06					
601	0%	0%	ER - Preparation for Qualification Test: Day -4 PSync	Mon 13-11-11	Mon 13-11-11					
602	0%	0%	ER - Qualification Test (QT) Execution - EnWin	Thu 13-11-14	Fri 13-12-06					
603	0%	0%	ER - Qualification Test (QT) Support	Thu 13-11-14	Fri 13-12-06					
604	0%	0%	ER - Daily Conference Calls	Thu 13-11-14	Fri 13-12-06					
605	0%	0%	ER - Milestone - QT Completed	Fri 13-12-06	Fri 13-12-06					
606	0%	0%	MDM/R Checkpoint - QT Complete	Fri 13-12-06	Fri 13-12-06					
607	0%	0%	ER - Invoice Milestone - Completion of SIT and QT Testing	Fri 13-12-06	Fri 13-12-06					
608	0%	0%	MDMR Regression	Mon 14-01-13	Fri 14-01-31					
609	0%	0%	ER - Environment preparation (UPG PROD Alignment)	Mon 14-01-13	Fri 14-01-17					
610	0%	0%	ER - Regression Test	Mon 14-01-20	Fri 14-01-31					
611	0%	0%	Post Implementation Support	Mon 14-02-17	Tue 14-05-20					
612	0%	0%	ER - Periodic Billing with MDM/R	Mon 14-02-17	Fri 14-03-28					
613	0%	0%	ER - OnSite Support for Transition to MDM/R Billing	Mon 14-03-31	Fri 14-04-18					
614	0%	0%	ER - Milestone - MDMR Periodic Billing Cutover	Mon 14-03-31	Mon 14-03-31					
615	0%	0%	ER - Bill Pilot Cycles on TOU	Wed 14-04-16	Wed 14-04-16					
616	0%	0%	ER -VEE Service Change on Remaining Cycles	Fri 14-04-25	Fri 14-04-25					
617	0%	0%	ER - Bill on TOU	Mon 14-04-28	Mon 14-04-28					
618	0%	0%	ER - Invoice Milestone - Transition to TOU Billing	Tue 14-04-29	Tue 14-04-29					
619	0%	0%	ER - Onsite Support for Transition to TOU	Wed 14-04-30	Tue 14-05-20					
620	0%	0%	ER - Post Cutover Activities Completed	Tue 14-05-20	Tue 14-05-20					
621										
622										
623	73%	85%	MeterSense Project - ENWIN	Mon 12-10-15	Thu 14-03-06					
624	70%	72%	Project Management	Mon 12-10-15	Mon 14-01-06					
625	69%	69%	Project Management / Technical Oversight	Mon 12-10-15	Mon 13-12-30					
628	69%	69%	Communication Management	Mon 12-10-15	Mon 14-01-06					
633	69%	69%	Scope Management	Mon 12-10-15	Mon 13-12-30					
635	73%	77%	Risk Management	Mon 12-10-15	Wed 13-11-20					
638	100%	100%	Project Plan	Mon 12-10-15	Wed 13-02-20					
643	100%	100%	NorthStar MeterSense Solution Definition Phase	Mon 12-10-15	Tue 13-02-05					
644	100%	100%	Project Preparation	Mon 12-10-15	Fri 12-10-19					
647	100%	100%	Project Kick-Off	Mon 12-10-15	Tue 12-10-23					
651	100%	100%	NorthStar MeterSense Product Orientation Session - Training	Wed 12-10-24	Fri 12-11-02					
655	100%	100%	Discovery	Wed 12-10-24	Wed 12-11-07					

ID	% Complete	% Work Complete	Task Name	Start	Finish	September		November		January	
						09-08	10-06	11-03	12-01	12-29	01
661	100%	100%	Physical Architecture Review / Recommendation	Mon 12-12-10	Tue 13-01-22						100
665	100%	100%	Solution Requirements Documents	Mon 12-11-12	Fri 12-12-07						
671	100%	100%	Integration Requirements Document	Mon 12-11-12	Fri 12-12-07						
677	100%	100%	Training / Change Management Plan	Mon 12-11-19	Tue 13-02-05						
683	100%	100%	Test Plan	Mon 12-11-19	Tue 13-02-05						
689	100%	100%	MS - Invoice Milestone - Sign off on Solutions Requirements Document	Fri 12-12-07	Fri 12-12-07						
690	100%	100%	MeterSense Solution Design Phase	Wed 12-10-24	Wed 13-02-27						
691	100%	100%	Integration Design Document Document	Mon 12-12-10	Wed 13-02-20						
695	100%	100%	Test Cases / Scenarios Document	Wed 13-02-06	Wed 13-02-27						
699	100%	100%	NorthStar MeterSense Base Solution Installation and Configuration	Wed 12-10-24	Fri 12-12-14						
706	100%	100%	MeterSense Configuration and Construction Phase	Wed 13-01-02	Tue 13-04-30						
707	100%	100%	Configuration and Construction	Wed 13-01-02	Tue 13-03-26						
723	100%	100%	Milestone - Solution Feature Complete	Tue 13-03-26	Tue 13-03-26						
724	100%	100%	User Acceptance Testing Detailed Plan Document	Wed 13-03-27	Tue 13-04-30						
730	100%	100%	Training Detailed Schedule	Thu 13-02-28	Wed 13-03-27						
734	59%	96%	MeterSense Solution Validation Phase	Wed 13-02-27	Tue 13-10-01						
735	100%	100%	Testing Environment	Wed 13-02-27	Tue 13-03-26						
737	100%	100%	Functional Testing	Wed 13-03-27	Tue 13-04-16						
741	100%	100%	Integration Testing	Wed 13-04-17	Tue 13-04-30						
746	81%	80%	Training	Mon 13-04-22	Tue 13-10-01						
747	81%	80%	Functional and Rule Engine Training	Mon 13-04-22	Tue 13-10-01						
748	100%	100%	MS - Prepare Core Team Functional Training	Mon 13-04-22	Fri 13-04-26						
749	100%	100%	MS - Hold Core Team Functional Training	Mon 13-04-29	Thu 13-05-02						
750	0%	0%	MS - Rules Engine Training	Mon 13-09-30	Tue 13-10-01						
751	0%	0%	MS - VEE Working Session	Tue 13-10-01	Tue 13-10-01						
752	100%	100%	MS - Invoice Milestone - Functional Training Complete	Fri 13-05-03	Fri 13-05-03						
753	100%	100%	MS - Deliverable - Core Team Functional and Process / Rules Training	Fri 13-05-03	Fri 13-05-03						
754	25%	98%	User Acceptance Testing	Mon 13-05-06	Thu 13-09-26						
759	0%	0%	MS - Deliverable - Accepted Solution	Tue 13-10-01	Tue 13-10-01						
760	28%	29%	1.5 Years of Historical Data Loading	Mon 13-08-26	Thu 14-01-30						
761	50%	50%	MS - Finalize Timing of Data Load	Mon 13-08-26	Fri 13-09-13						
762	0%	0%	MS - Schedule and execute data archiving and restore testing	Mon 13-09-16	Fri 13-10-04						
763	75%	0%	MS - Assemble Historical Sensus and MV90 Data	Mon 13-11-18	Fri 13-12-13						
764	0%	0%	MS - Load and Validate Data	Mon 13-12-16	Thu 14-01-30						

ID	% Complete	% Work Complete	Task Name	Start	Finish	September		November		January	
						09-08	10-06	11-03	12-01	12-29	01
765	50%	21%	MeterSense Solution Production Environment Phase	Fri 13-02-01	Thu 14-03-06						
766	89%	76%	Production Environment	Fri 13-02-01	Thu 14-01-30						
767	100%	100%	MS - Procure and configure Production Server	Fri 13-02-01	Thu 13-02-14						
768	100%	100%	MS - Setup Production Environment	Fri 13-02-15	Fri 13-03-15						
769	100%	100%	MS - Regression Testing of Solution from Upgrade to RNI 3.1	Mon 13-03-04	Fri 13-03-15						
770	0%	0%	MS - Confirm Production Environment Readiness	Fri 14-01-24	Thu 14-01-30						
771	0%	0%	MS - MeterSense Soft Go-Live	Thu 14-01-30	Thu 14-01-30						
772	0%	0%	Business Process Training (prior to Live)	Tue 13-11-19	Mon 14-02-03						
773	0%	0%	MS - Prepare Business Process Training	Tue 13-11-19	Mon 13-12-02						
774	0%	0%	MS - Hold Business Process Training (Core Team)	Tue 13-12-03	Mon 13-12-09						
775	0%	0%	MS - Hold Business Process Training (Engg. Team)	Mon 14-02-03	Mon 14-02-03						
776	0%	0%	MS - Milestone - Business Process Training Complete	Mon 14-02-03	Mon 14-02-03						
777	0%	0%	Production Environment Release	Mon 14-02-10	Thu 14-02-20						
778	0%	0%	MS - Perform Cut-Over Activities	Mon 14-02-10	Fri 14-02-14						
779	0%	0%	MS - Release Production Environment to End Customer Base	Mon 14-02-17	Mon 14-02-17						
780	0%	0%	MS - Validate Success (Test Cases Sub-Set)	Mon 14-02-17	Thu 14-02-20						
781	0%	0%	MS - Invoice Milestone - Solution Live	Thu 14-02-20	Thu 14-02-20						
782	0%	0%	Post-Production Environment - Enhanced Support	Fri 14-02-21	Thu 14-03-06						
783	0%	0%	MS - Support and Consult - as required	Fri 14-02-21	Thu 14-03-06						
784	0%	0%	MS - Milestone - MeterSense Project Completed	Thu 14-03-06	Thu 14-03-06						
785	0%	0%	Milestone - Final Acceptance of Project Closeout	Wed 14-06-25	Wed 14-06-25						







July			September		November		January		March		May		July		September		
06-14	07-12	08-09	09-06	10-04	11-01	11-29	12-27	01-24	02-21	03-21	04-18	05-16	06-13	07-11	08-08	09-05	10-03
<div><div></div><div>68%</div></div>																	
<div><div></div><div>68%</div></div>																	

Page 15

July			September		November		January		March		May		July		September		
06-14	07-12	08-09	09-06	10-04	11-01	11-29	12-27	01-24	02-21	03-21	04-18	05-16	06-13	07-11	08-08	09-05	10-03
Page 16																	

[illegible]

	July			September		November		January		March		May		July		September		
06-14	07-12	08-09	09-06	10-04	11-01	11-29	12-27	01-24	02-21	03-21	04-18	05-16	06-13	07-11	08-08	09-05	10-03	
Page 18																		

[illegible]

July			September		November		January		March		May		July		September		
06-14	07-12	08-09	09-06	10-04	11-01	11-29	12-27	01-24	02-21	03-21	04-18	05-16	06-13	07-11	08-08	09-05	10-03
aron Fedak[70%],EW IT Conversion - Michael Easterbrook[53%],EW Tester1 - Meter Reading[182%]																	

Page 20

		July		September		November		January		March		May		July		September		
06-14	07-12	08-09	09-06	10-04	11-01	11-29	12-27	01-24	02-21	03-21	04-18	05-16	06-13	07-11	08-08	09-05	10-03	
<div>▼</div> <div>◆</div>																		