

Smart Meter Time of Use EnWin Utilities Ltd for EB-2012-0405

For the Period to: 30-Nov-13

RPP Eligible Consumers:

Description	Residential	GS < 50kW Class	Total
Total Number of RPP-eligible consumers	77,506	7,182	84,688
Number of smart meters installed in the period	39	13	52
Number of smart meters registered with the MDM/R in the period	0	0	0
Number of RPP consumers being charged TOU prices added in the period	0	0	0
Total cumulative number of smart meters installed in the service area at the end of the period	78,252	7,559	85,811
Total cumulative number of smart meters registered with the MDM/R at the end of the period	0	0	0
Total cumulative number of consumers being charged TOU prices at the end of the period	0	0	0

Progress Report on SME Milestones

Activity	Original Scheduled Completion Date	Status	Expected Completion Date	Actual Completion Date
1. AMCC Internal Testing		Complete	July-30-10	July-30-10

Activity	Original Scheduled Completion Date	Status	Expected Completion Date	Actual Completion Date
2. CIS Internal Testing	September-04-13	Behind Schedule	December-13-13	

Activity	Yes or No?	Expected Completion Date	Actual Completion Date
3. MDM/R Registration Application submitted	Yes	January-01-10	January-01-10

Activity	Yes or No?	Status, if Yes	Expected Completion Date	Actual Completion Date
4. Enrolment Wave requested and confirmed (Note: the SME will either confirm the requested start date or suggest an alternate)	Yes	Complete	March-25-13	January-23-13

Activity	Original Scheduled Completion Date	Status	Expected Completion Date	Actual Completion Date
5. Unit Testing	September-12-13	Complete	September-12-13	September-27-13

Activity	Original Scheduled Completion Date	Status	Expected Completion Date	Actual Completion Date
6. Submitted a completed Self Certification for Enrolment Testing SME_FORM_0007 (Note: This must be submitted at least one week prior to the confirmed enrolment wave start date)	August-26-13	Complete	October-30-13	October-22-13

Activity	Original Scheduled Completion Date	Status	Expected Completion Date	Actual Completion Date
7. System Integration Testing (SIT)	September-18-13	Complete	November-01-13	November-01-13

Activity	Original Scheduled Completion Date	Status	Expected Completion Date	Actual Completion Date
8. Qualification Testing (QT)	October-17-13	Complete	November-29-13	November-29-13

Activity	Original Scheduled Completion Date	Status	Expected Completion Date	Actual Completion Date
9. Self Certification - Cutover	November-28-13	Behind Schedule	March-17-14	

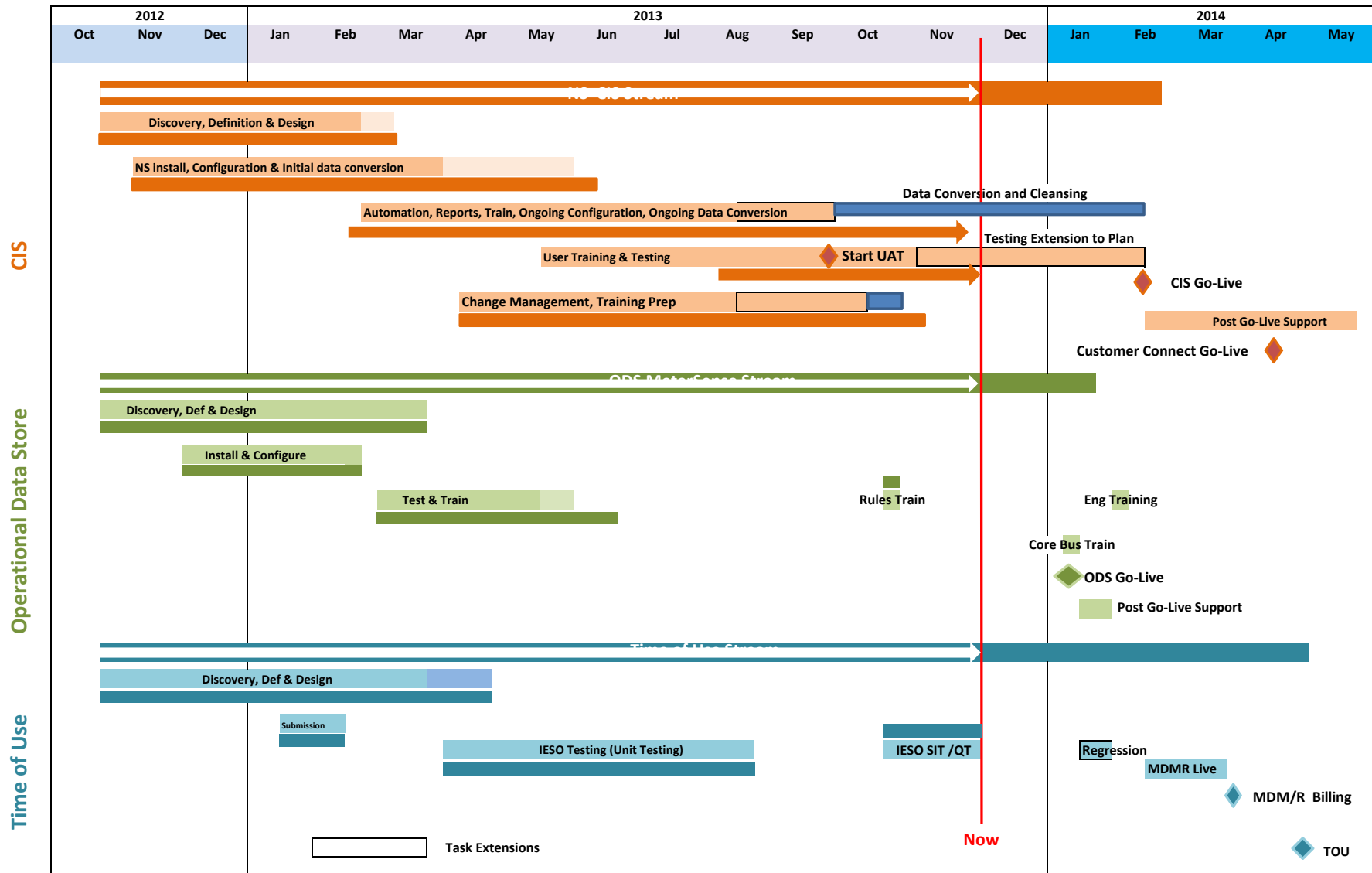
Activity	Original Scheduled Completion Date	Status	Expected Completion Date	Actual Completion Date
10. Transition to Production Operations	March-26-14	Behind Schedule	April-28-14	

Additional Comments and Information

The project has fallen behind due to complications from the interaction of EnWin's Oracle database and a newly released version of the CIS. This created unusual and unexpected issues that are being addressed.

EnWin and the vendor have shifted activities within the timeline and increased the resources to support the corrective actions and incremental testing requirements.

EnWin expects to meet the requirement to apply TOU pricing under the Standard Supply Service Code to all of its customers by April 30, 2014 as approved in application EB-2012-0405.



EnWin EnStar Project Plan - November 2013

ID	% Complete	% Work Complete	Task Name	Start	Finish	Duration	Oct 22/09/12	October 30/10/12	November 07/11/12	November 14/11/12	December 21/12/12	January 28/01/13	February 04/02/13	March 11/03/13	April 18/04/13	May 25/05/13	June 01/06/13	July 08/07/13	August 15/08/13
1	73%	86%	Draft EnWin NorthStar Implementation Project Plan	Mon 15/10/12	Wed 25/06/14	85.1 wks?													
2																			
3	100%	100%	START DATE (Tentative - Would need to be confirmed and reviewed at Contract Signature)	Mon 15/10/12	Mon 15/10/12	0 wks													
4	0%	0%	Milestone Validation section	Wed 04/09/13	Thu 20/02/14	23.2 wks													
5	0%	0%	CIS Accepted Solution (fixed)	Wed 04/09/13	Wed 04/09/13	0 wks													
6	0%	0%	CIS Accepted Solution tracked	Fri 20/12/13	Fri 20/12/13	0 wks													
7	0%	0%	CIS Go-Live (Fixed)	Mon 11/11/13	Mon 11/11/13	0 wks													
8	0%	0%	CIS Go-Live tracked	Tue 18/02/14	Tue 18/02/14	0 wks													
9	0%	0%	ERTH QT Complete (Fixed)	Mon 21/10/13	Mon 21/10/13	0 wks													
10	0%	0%	ERTH QT Complete tracked	Fri 06/12/13	Fri 06/12/13	0 wks													
11	0%	0%	MS Solution Live (fixed)	Thu 14/11/13	Thu 14/11/13	0 wks													
12	0%	0%	MS Solution Live tracked	Thu 20/02/14	Thu 20/02/14	0 wks													
13																			
14	76%	86%	CIS Project	Mon 15/10/12	Wed 25/06/14	85.1 wks													
15	56%	56%	Project Management	Mon 15/10/12	Tue 11/03/14	70 wks													
16	56%	55%	Project Management / Technical Oversight / IT Environment Support	Mon 15/10/12	Tue 11/03/14	70 wks													
20	55%	55%	Communication Management	Mon 15/10/12	Tue 11/03/14	70 wks													
25	56%	59%	Risk Management	Mon 15/10/12	Tue 04/02/14	65 wks													
28	100%	100%	Project Plan	Mon 15/10/12	Fri 16/11/12	5 wks													
33	69%	42%	Deliverable/Acceptance Management	Mon 19/11/12	Tue 22/01/13	8 wks													
39	96%	99%	Solution Definition Phase	Mon 15/10/12	Mon 09/09/13	44.8 wks													
40	100%	100%	Project Preparation	Mon 15/10/12	Fri 19/10/12	0.85 wks													
43	100%	100%	Project Kick-Off	Mon 15/10/12	Tue 23/10/12	1.4 wks													
47	100%	100%	NorthStar Product Orientation Session - Training	Mon 15/10/12	Thu 25/10/12	1.8 wks													
51	100%	100%	Discovery	Mon 15/10/12	Wed 07/11/12	3.6 wks													
59	94%	97%	CIS Definition	Thu 08/11/12	Mon 09/09/13	41.2 wks													
60	100%	100%	Physical Architecture Review / Recommendation	Mon 26/11/12	Tue 08/01/13	5 wks													

EnWin EnStar Project Plan - November 2013

ID	% Complete	% Work Complete	Task Name	Start	Finish	Duration	September	October	November	December	January	February	March	April	May	June	July	August
64	100%	100%	Solution Requirements and Customizations Documents	Thu 08/11/12	Fri 04/01/13	7 wks					100%							
71	100%	100%	Reports Requirements Document	Thu 08/11/12	Fri 07/12/12	4.4 wks				100%								
77	100%	100%	Integration Requirements Document	Thu 08/11/12	Fri 04/01/13	7 wks				100%								
83	100%	100%	Conversion Requirements Document	Thu 08/11/12	Wed 12/12/12	5 wks				100%								
90	50%	59%	Training / Change Management Plan	Mon 07/01/13	Mon 09/09/13	34.2 wks												
91	100%	100%	NS - Draft Training/Change Management Plan Document	Mon 07/01/13	Fri 11/01/13	1 wk					100%							
92	100%	100%	NS - Review Training/Change Management Plan Document	Mon 14/01/13	Fri 18/01/13	1 wk					100%							
93	0%	0%	NS - Finalize Training/Change Management Plan Document	Mon 26/08/13	Fri 30/08/13	1 wk												
94	0%	0%	NS - Training/Change Management Plan Document Sign-Off	Tue 03/09/13	Mon 09/09/13	1 wk												
95	0%	0%	NS - Deliverable - Training/Change Management Plan Document	Mon 09/09/13	Mon 09/09/13	0 wks												
96	100%	100%	Test Plan	Mon 07/01/13	Fri 01/02/13	4 wks					100%							
102	97%	98%	Customer Connect Definition	Mon 04/02/13	Mon 15/04/13	10 wks								97%				
103	100%	100%	NS - Customer Connect Overview Session	Mon 04/02/13	Wed 06/02/13	0.5 wks					100%							
104	100%	100%	NS - Requirements Review and Confirmation Session - Functional and Integration Requirements	Wed 06/02/13	Mon 11/02/13	0.7 wks					100%							
105	100%	100%	NS - Acceptance Criteria Items - Add to Main Project Document	Tue 12/02/13	Thu 14/02/13	0.5 wks					100%							
106	75%	75%	NS - Review and confirm Test Plan	Thu 14/02/13	Tue 19/02/13	0.5 wks					75%							
107	75%	75%	NS - Review and update Test Case Scenarios	Wed 20/02/13	Fri 22/02/13	0.5 wks					75%							
108	100%	100%	NS - Draft CustomerConnect Requirements Document	Tue 12/03/13	Mon 25/03/13	2 wks							100%					
109	100%	100%	NS - Review CustomerConnect Requirements Document	Tue 26/03/13	Mon 01/04/13	1 wk							100%					

EnWin EnStar Project Plan - November 2013

ID	% Complete	% Work Complete	Task Name	Start	Finish	Duration	September	October	November	December	January	February	March	April	May	June	July	August
110	100%	100%	NS - Finalize CustomerConnect Requirements Document	Tue 02/04/13	Mon 08/04/13	1 wk								100%				
111	100%	100%	NS - CustomerConnect Requirements Document Sign-Off	Tue 09/04/13	Mon 15/04/13	1 wk								100%				
112	100%	100%	NS - Milestone - CustomerConnect requirements document finalized.	Mon 15/04/13	Mon 15/04/13	0 wks								15/04				
113	100%	100%	NS - Invoice Milestone - Sign off on Requirements Documents	Fri 04/01/13	Fri 04/01/13	0 wks				04/01								
114	100%	100%	Solution Design Phase	Mon 15/10/12	Fri 22/02/13	17.3 wks												
115	100%	100%	CIS Design	Mon 15/10/12	Fri 15/02/13	16.6 wks												
116	100%	100%	Integration Design Document	Thu 20/12/12	Fri 25/01/13	4 wks												
120	100%	100%	Customization Design Document for Development Work	Thu 20/12/12	Fri 18/01/13	3 wks												
124	100%	100%	Reports Design Document	Mon 03/12/12	Fri 21/12/12	3 wks												
128	100%	100%	Conversion Design Document	Thu 29/11/12	Tue 15/01/13	5.4 wks												
138	100%	100%	ERTH Design Activities	Mon 07/01/13	Fri 11/01/13	1 wk												
140	100%	100%	Testing Tools	Mon 28/01/13	Fri 15/02/13	3 wks												
144	100%	100%	NorthStar Base Solution Installation and Configuration	Mon 15/10/12	Mon 17/12/12	9.1 wks												
161	100%	100%	NS - Milestone - Solution Design Complete	Fri 22/02/13	Fri 22/02/13	0 wks								22/02				
162	99%	99%	Solution Configuration and Construction Phase	Mon 05/11/12	Wed 19/06/13	30.8 wks												99%
163	99%	99%	CIS Configuration and Construction	Mon 05/11/12	Wed 19/06/13	30.8 wks												99%
164	100%	100%	Configurations and Setups	Mon 05/11/12	Thu 21/03/13	18.1 wks												
180	100%	100%	Integrations	Mon 28/01/13	Fri 22/03/13	7.7 wks												
185	100%	100%	Conversion	Wed 02/01/13	Mon 03/06/13	21.4 wks												
196	100%	100%	Test Cases / Scenarios Document	Mon 04/02/13	Fri 29/03/13	7.8 wks												
200	100%	100%	Testing Tools	Thu 28/02/13	Thu 28/03/13	4 wks												
202	100%	100%	Additional EnWin Requirements/Functionality	Mon 21/01/13	Wed 19/06/13	21.2 wks												
259	75%	75%	NS - Milestone - Design documents finalized	Wed 19/06/13	Wed 19/06/13	0 wks												19/06
260	0%	0%	NS - Finalize Customizations Development Design Document	Wed 19/06/13	Wed 19/06/13	0 wks												19/06
261	100%	100%	NS - Milestone - Solution Feature Complete	Wed 19/06/13	Wed 19/06/13	0 wks												19/06

EnWin EnStar Project Plan - November 2013

ID	% Complete	% Work Complete	Task Name	Start	Finish	Duration	September	October	November	December	January	February	March	April	May	June	July	August
262	100%	100%	User Acceptance Testing Detailed Plan Document	Tue 09/04/13	Mon 13/05/13	5 wks												
268	80%	53%	Parallel Testing Detailed Plan document	Tue 09/04/13	Thu 02/05/13	3.5 wks												
269	100%	100%	NS - Draft Parallel Testing Detailed Plan Document	Tue 09/04/13	Mon 15/04/13	1 wk												
270	90%	90%	NS - Review Parallel Testing Detailed Plan Document	Tue 16/04/13	Mon 22/04/13	1 wk												
271	90%	90%	NS - Finalize Parallel Testing Detailed Plan Document	Tue 23/04/13	Mon 29/04/13	1 wk												
272	0%	0%	NS - Parallel Testing Detailed Plan Document Sign-Off	Tue 30/04/13	Thu 02/05/13	0.5 wks												
273	84%	84%	Performance Testing Detailed Plan document	Tue 09/04/13	Mon 06/05/13	4 wks												
274	100%	100%	NS - Performance Testing Detailed Plan Document	Tue 09/04/13	Mon 15/04/13	1 wk												
275	100%	100%	NS - Review Performance Testing Detailed Plan Document	Tue 16/04/13	Mon 22/04/13	1 wk												
276	95%	95%	NS - Finalize Performance Testing Detailed Plan Document	Tue 23/04/13	Mon 29/04/13	1 wk												
277	0%	0%	NS - Performance Testing Detailed Plan Document Sign-Off	Thu 02/05/13	Mon 06/05/13	0.5 wks												
278	41%	51%	Consolidated NS/MS/ERTH Go-Live Approach Document	Mon 29/04/13	Wed 29/05/13	4.4 wks												
279	90%	90%	NS - Draft Go-Live Approach Document	Mon 29/04/13	Fri 03/05/13	1 wk												
280	90%	93%	NS - Review Go-Live Approach Document	Mon 06/05/13	Fri 10/05/13	1 wk												
281	0%	0%	NS - Finalize Go-Live Approach Document	Mon 13/05/13	Fri 17/05/13	1 wk												
282	0%	0%	NS - Go-Live Approach Document Sign-Off	Mon 20/05/13	Wed 29/05/13	1.4 wks												
283	0%	0%	NS - Deliverable - Go-Live Approach Document	Wed 29/05/13	Wed 29/05/13	0 wks												
284	100%	100%	Training Detailed Schedule	Fri 05/04/13	Fri 17/05/13	6 wks												

EnWin EnStar Project Plan - November 2013

ID	% Complete	% Work Complete	Task Name	Start	Finish	Duration	September	October	November	December	January	February	March	April	May	June	July	August
291	94%	94%	Solution Validation Phase	Thu 23/05/13	Fri 20/12/13	29.6 wks												
292	94%	94%	CIS Validation	Thu 23/05/13	Fri 20/12/13	29.6 wks												
293	100%	100%	Testing Environment	Thu 23/05/13	Fri 27/09/13	17.71 wks												
297	100%	100%	Conversion Activities	Fri 07/06/13	Tue 16/07/13	5.2 wks												
303	100%	100%	Functional Testing	Fri 07/06/13	Wed 18/09/13	14 wks												
308	96%	97%	Conversion Testing	Fri 07/06/13	Wed 25/09/13	15 wks												
309	100%	100%	NS - Perform Conversion Testing	Fri 07/06/13	Mon 08/07/13	4 wks												
310	95%	95%	NS - Bug Resolution	Fri 07/06/13	Wed 25/09/13	15 wks												
311	95%	95%	NS - Publish Conversion Testing Results	Fri 07/06/13	Wed 25/09/13	15 wks												
312	0%	0%	NS - Deliverable - Conversion Test Results	Wed 25/09/13	Wed 25/09/13	0 wks												
313	100%	100%	Integration Testing	Tue 06/08/13	Wed 18/09/13	6 wks												
318	67%	99%	Enhanced ERTH Testing	Fri 12/07/13	Thu 05/12/13	20.2 wks												
324	99%	99%	Additional EnWin Requirements/Functionality Validation	Thu 20/06/13	Tue 24/09/13	13.2 wks												
366	96%	92%	Training - Core Team Functional and Process Training	Wed 10/07/13	Fri 20/12/13	23 wks												
367	100%	100%	ER - ERTH Supplied Training Material	Wed 10/07/13	Thu 21/11/13	93.35 days												
368	100%	100%	NS - Prepare Test/Core Team Functional and Process Training	Tue 27/08/13	Fri 06/09/13	8 days												
369	100%	100%	NS - Hold Test/Core Team Functional and Process Training (2 week - Training)	Mon 09/09/13	Fri 20/09/13	2 wks												
370	100%	100%	NS - Deliverable - Test/Core Team Functional and Process Training	Fri 20/09/13	Fri 20/09/13	0 wks												
371	80%	53%	Load Testing	Wed 25/09/13	Fri 20/12/13	12.38 wks												
377	85%	90%	User Acceptance Testing	Thu 26/09/13	Fri 20/12/13	12 wks												
378	90%	90%	NS - Perform User Acceptance Testing (CIS, Reports Anywhere, Customer Connect)	Thu 26/09/13	Fri 20/12/13	12 wks												
379	0%	0%	ER - Retailer Parallel Billing	Fri 08/11/13	Fri 22/11/13	2 wks												
380	0%	0%	ER - Deliverable - Retailer Parallel Billing Test Results	Fri 22/11/13	Fri 22/11/13	0 wks												
381	90%	90%	NS - Support Customer during User Acceptance Testing	Thu 26/09/13	Fri 20/12/13	12 wks												
382	90%	90%	NS - Bug Resolution	Thu 26/09/13	Fri 20/12/13	12 wks												

EnWin EnStar Project Plan - November 2013

ID	% Complete	% Work Complete	Task Name	Start	Finish	Duration	September	October	November	December	January	February	March	April	May	June	July	August
383	0%	0%	NS - Invoice Milestone - Accepted Solution	Fri 20/12/13	Fri 20/12/13	0 wks												
384	0%	0%	NS - Deliverable - Accepted Source Code and Executable	Fri 20/12/13	Fri 20/12/13	0 wks												
385	57%	39%	Solution Transition Readiness Phase	Tue 15/10/13	Fri 28/02/14	19 wks												
386	57%	39%	CIS Transition Readiness	Tue 15/10/13	Fri 28/02/14	19 wks												
387	100%	100%	Pre-Production Environment	Fri 06/12/13	Fri 07/02/14	8.38 wks												
389	84%	79%	Training - End User	Tue 15/10/13	Mon 16/12/13	9 wks												
390	100%	100%	NS - Prepare End User Training	Tue 15/10/13	Mon 28/10/13	2 wks												
391	100%	100%	NS - Modify End User Training Material	Tue 29/10/13	Mon 04/11/13	1 wk												
392	75%	75%	NS - Conduct End-User Training	Tue 12/11/13	Mon 16/12/13	5 wks												
393	75%	75%	NS - Deliverable - End User Training Delivered	Mon 16/12/13	Mon 16/12/13	0 wks												
394	0%	0%	Training - Customer Connect	Mon 24/02/14	Fri 28/02/14	1 wk												
395	0%	0%	NS - Customer Connect Training Sessions	Mon 24/02/14	Fri 28/02/14	1 wk												
396	0%	0%	NS - Deliverable - Customer Connect Training Delivered	Fri 28/02/14	Fri 28/02/14	0 wks												
397	0%	0%	Training - EIS	Mon 03/02/14	Fri 07/02/14	1 wk												
398	0%	0%	NS - EIS - Training Session	Mon 03/02/14	Fri 07/02/14	1 wk												
399	0%	0%	NS - Deliverable - EIS Training Delivered	Fri 07/02/14	Fri 07/02/14	0 wks												
400	0%	0%	Conversion Activities	Mon 06/01/14	Fri 10/01/14	1 wk												
401	0%	0%	NS - Extract Data	Mon 06/01/14	Mon 06/01/14	1 day												
402	0%	0%	NS - Convert Data	Tue 07/01/14	Wed 08/01/14	2 days												
403	0%	0%	NS - Review Data	Thu 09/01/14	Fri 10/01/14	2 days												
404	0%	0%	Parallel - New Solution / Legacy Solution (Selected Accounts)	Mon 13/01/14	Mon 10/02/14	4 wks												
405	0%	0%	NS - Support Customer during Parallel Training - CIS	Mon 13/01/14	Fri 07/02/14	4 wks												
406	0%	0%	NS - Deliverable - Parallel Training Completed	Mon 10/02/14	Mon 10/02/14	0 wks												
407	0%	0%	NorthStar Support Services	Mon 27/01/14	Fri 31/01/14	1 wk												

EnWin EnStar Project Plan - November 2013

ID	% Complete	% Work Complete	Task Name	Start	Finish	Duration	September	October	November	December	January	February	March	April	May	June	July	August
408	0%	0%	NS - NorthStar - Support Services Preparation (eSupport Preparation, Transition docs)	Mon 27/01/14	Fri 31/01/14	5 days												
409	0%	0%	NS - Introduce NorthStar - Support Services Transition Team Lead	Mon 27/01/14	Fri 31/01/14	5 days												
410	0%	0%	NS - Create Transition Plan for ERT Knowledge Transfer and Handover to AMS	Mon 27/01/14	Fri 31/01/14	1 wk												
411	0%	0%	NS - Deliverable - Transition Plan for ERT Knowledge Transfer and AMS Handover Created	Fri 31/01/14	Fri 31/01/14	0 wks												
412	0%	0%	NS - Milestone - Accepted Solution (Transition Readiness Phase)	Mon 10/02/14	Mon 10/02/14	0 wks												
413	0%	0%	CIS Solution Go-Live Phase	Mon 15/10/12	Wed 25/06/14	85.1 wks												
414	0%	0%	CIS Go-Live	Tue 03/12/13	Tue 15/04/14	18.3 wks												
415	0%	0%	Production Environment	Mon 10/02/14	Fri 14/02/14	1 wk												
416	0%	0%	NS - Confirm Production Environment Readiness	Mon 10/02/14	Fri 14/02/14	1 wk												
417	0%	0%	Go / No-Go Decision	Mon 17/02/14	Mon 17/02/14	0.1 wks												
418	0%	0%	NS - Co-ordinate Go / No-Go Meeting for Decision	Mon 17/02/14	Mon 17/02/14	0.25 days												
419	0%	0%	NS - Communicate Decision to Team and Stakeholders	Mon 17/02/14	Mon 17/02/14	0.25 days												
420	0%	0%	Go-Live	Tue 03/12/13	Tue 15/04/14	18.3 wks												
421	0%	0%	mCARE - Training & Go-Live	Tue 03/12/13	Tue 18/02/14	10.4 wks												
422	0%	0%	NS - mCARE - onsite Field Service Rep and Customer Service Rep training - 2 weeks	Tue 03/12/13	Mon 16/12/13	10 days												
423	0%	0%	NS - Deliverable - mCARE Training Delivered	Mon 16/12/13	Mon 16/12/13	0 wks												
424	0%	0%	NS - mCARE - Go-Live	Tue 18/02/14	Tue 18/02/14	0 wks												
425	0%	0%	NS - Invoice Milestone - mCARE Live	Tue 18/02/14	Tue 18/02/14	0 wks												
426	0%	0%	CIS	Mon 10/02/14	Fri 21/02/14	2 wks												

EnWin EnStar Project Plan - November 2013

ID	% Complete	% Work Complete	Task Name	Start	Finish	Duration	September	October	November	December	January	February	March	April	May	June	July	August
434	0%	0%	Customer Connect	Mon 03/03/14	Tue 15/04/14	6.3 wks												
439	0%	0%	NS - Milestone - NorthStar CIS Solution Live	Tue 15/04/14	Tue 15/04/14	0 wks												
440	0%	0%	Post-Go-Live	Mon 15/10/12	Wed 25/06/14	85.1 wks												
441	0%	0%	NS - Post Go-Live Support - 13 weeks	Wed 19/02/14	Fri 16/05/14	63 days												
442	0%	0%	NS-Post Go-Live Support as per CO E-20 for TOU billing	Mon 19/05/14	Fri 20/06/14	5 wks												
443	0%	0%	NS - Invoice Milestone - Completion of Post Live Support	Fri 20/06/14	Fri 20/06/14	0 wks												
444	0%	0%	TOU Training	Mon 14/04/14	Fri 18/04/14	1 wk												
445	0%	0%	NS - Training Prep	Mon 14/04/14	Tue 15/04/14	2 days												
446	0%	0%	NS - Training on TOU Rates/C/C Screen Changes	Wed 16/04/14	Wed 16/04/14	1 day												
447	0%	0%	NS - Training on TOU Rates/C/C Screen Changes	Thu 17/04/14	Thu 17/04/14	1 day												
448	0%	0%	NS - Training on TOU Rates/C/C Screen Changes	Fri 18/04/14	Fri 18/04/14	1 day												
449	0%	0%	NS - Deliverable - Training on TOU Rates/C/C Screen Changes Delivered	Fri 18/04/14	Fri 18/04/14	0 wks												
450	0%	0%	NS - Knowledge transfer to EARTH (changed as per CO E-20 for TOU billing)	Mon 15/10/12	Fri 02/11/12	3 wks												
451	0%	0%	NS - Knowledge transfer to Support Services	Mon 23/06/14	Wed 25/06/14	0.5 wks												
452	0%	0%	NS - Milestone - AMS Support transitioned to EARTH	Wed 25/06/14	Wed 25/06/14	0 wks												
453	0%	0%	NS - NorthStar CIS Project Implementation End Date	Wed 25/06/14	Wed 25/06/14	0 wks												
454																		
455																		
456	65%	91%	MDM/R Project	Mon 15/10/12	Tue 20/05/14	80 wks?												
457	58%	62%	Project Management	Mon 15/10/12	Tue 11/03/14	70 wks												
458	58%	58%	Project Management	Mon 15/10/12	Tue 11/03/14	70 wks												
461	58%	58%	Communication Management	Mon 15/10/12	Tue 11/03/14	70 wks												

EnWin EnStar Project Plan - November 2013

ID	% Complete	% Work Complete	Task Name	Start	Finish	Duration	Jan	Feb	Mar	Apr	May	June	July	Aug
464	58%	58%	Risk Management	Mon 15/10/12	Tue 11/03/14	70 wks								
466	100%	100%	IESO Project Plan	Mon 26/11/12	Wed 16/01/13	6.2 wks								
472	100%	100%	Initial MDM/R Registration Activities	Wed 16/01/13	Tue 22/01/13	1 wk								
480	30%	33%	Ongoing MDM/R Registration Activities	Tue 22/01/13	Mon 10/02/14	53 wks								
481	100%	100%	ER - Receive Network Connectivity Information	Tue 22/01/13	Tue 22/01/13	1 day								
482	100%	100%	ER - Submit MDM/R File Transfer Services Configuration Form (0014)	Fri 15/03/13	Fri 15/03/13	1 day								
483	100%	100%	ER - Submit Updated IESO Project Plan, if Required	Wed 03/04/13	Wed 03/04/13	1 day								
484	100%	100%	ER - Submit User Access Request Forms (013)	Wed 03/04/13	Wed 03/04/13	1 day								
485	100%	100%	ER - Receive GUI Access Information	Thu 04/04/13	Thu 11/04/13	6 days								
486	0%	0%	ER - Prepare Cutover Strategy	Wed 18/12/13	Mon 20/01/14	4 wks								
487	0%	0%	ER - Submit Cutover Strategy	Mon 20/01/14	Mon 20/01/14	1 day								
488	100%	100%	ER - Prepare and submit Self Certification for Enrolment Testing Form (007)	Mon 14/10/13	Mon 14/10/13	1 day								
489	100%	100%	ER - Receive Acceptance for Enrolment Testing	Tue 22/10/13	Tue 22/10/13	1 day								
490	0%	0%	ER - Prepare Self-Certification - Cutover Readiness Self-Assessment Form (008)	Mon 03/02/14	Fri 07/02/14	1 wk								
491	0%	0%	ER - Submit Self-Certification - Cutover Readiness Self-Assessment Form (008)	Mon 10/02/14	Mon 10/02/14	1 day								
492	0%	0%	ER - Receive Acceptance for Cutover Readiness	Mon 10/02/14	Mon 10/02/14	1 day								
493	100%	100%	Solution Definition Phase	Mon 15/10/12	Tue 13/11/12	4.4 wks								
494	100%	100%	Project Kick-Off	Mon 15/10/12	Tue 23/10/12	1.4 wks								
497	100%	100%	Discovery	Wed 24/10/12	Tue 13/11/12	3 wks								
503	100%	100%	Solution Design Phase	Wed 09/01/13	Mon 10/06/13	21.4 wks								
504	100%	100%	Business Process Changes Review	Wed 13/02/13	Tue 26/03/13	5.6 wks								
511	100%	100%	ER - Milestone - Business Process Changes Completed	Tue 26/03/13	Tue 26/03/13	0 days								
512	100%	100%	CIS Design Document	Tue 26/03/13	Fri 29/03/13	0.6 wks								
514	100%	100%	Unit Test Planning	Wed 09/01/13	Wed 13/02/13	5.2 wks								

EnWin EnStar Project Plan - November 2013

ID	% Complete	% Work Complete	Task Name	Start	Finish	Duration	September	October	November	December	January	February	March	April	May	June	July	August
522	100%	100%	Cutover Planning	Thu 07/02/13	Mon 25/03/13	6.4 wks								100%				
529	100%	100%	Staff Training	Mon 06/05/13	Mon 10/06/13	5 wks									100%			
537	100%	100%	Solution Construction Phase	Fri 21/12/12	Mon 10/06/13	22.6 wks								100%				
538	100%	100%	CIS Implementation	Wed 13/03/13	Fri 05/04/13	3.4 wks							100%					
542	100%	100%	Metersense Implementation	Thu 28/03/13	Wed 03/04/13	1 wk							100%					
544	100%	100%	mCARE Implementation	Wed 03/04/13	Mon 10/06/13	9.4 wks								100%				
547	100%	100%	AS2 Server Configuration	Fri 21/12/12	Thu 14/03/13	10.4 wks							100%					
553	100%	100%	ER - Milestone - Completed All System Installations and C	Thu 21/03/13	Thu 21/03/13	0 days								100%				
554	97%	99%	Solution Validation Phase	Thu 04/04/13	Tue 22/10/13	27.71 wks?												
555	97%	99%	Unit Testing with IESO	Thu 04/04/13	Tue 22/10/13	27.71 wks?												
588	100%	100%	ER - Milestone - Unit Testing Completed	Fri 30/08/13	Fri 30/08/13	0 days												
589	100%	100%	MDM/R Checkpoint - Unit Testing Completed	Fri 30/08/13	Fri 30/08/13	0 days												
590	100%	100%	ER - Deliverable - MDM/R Unit Testing Results	Mon 09/09/13	Mon 09/09/13	0 wks												
591	87%	100%	Solution Transition Readiness	Fri 20/09/13	Fri 31/01/14	18.2 wks												
592	99%	100%	MDMR Enrolment - SIT	Fri 20/09/13	Fri 08/11/13	7 wks												
600	99%	100%	MDMR Enrolment - QT	Mon 11/11/13	Fri 06/12/13	4 wks												
608	0%	0%	MDMR Regression	Mon 13/01/14	Fri 31/01/14	3 wks												
609	0%	0%	ER - Environment preparation (UPG PROD Alignment)	Mon 13/01/14	Fri 17/01/14	1 wk												
610	0%	0%	ER - Regression Test	Mon 20/01/14	Fri 31/01/14	10 days												
611	0%	0%	Post Implementation Support	Mon 17/02/14	Tue 20/05/14	13.4 wks												
612	0%	0%	ER - Periodic Billing with MDM/R	Mon 17/02/14	Fri 28/03/14	30 days												
613	0%	0%	ER - OnSite Support for Transition to MDM/R Billing	Mon 31/03/14	Fri 18/04/14	3 wks												
614	0%	0%	ER - Milestone - MDM/R Periodic Billing Cutover	Mon 31/03/14	Mon 31/03/14	0 days												
615	0%	0%	ER - Bill Pilot Cycles on TOU	Wed 16/04/14	Wed 16/04/14	1 day												
616	0%	0%	ER - VEE Service Change on Remaining Cycles	Fri 25/04/14	Fri 25/04/14	1 day												
617	0%	0%	ER - Bill on TOU	Mon 28/04/14	Mon 28/04/14	1 day												

EnWin EnStar Project Plan - November 2013

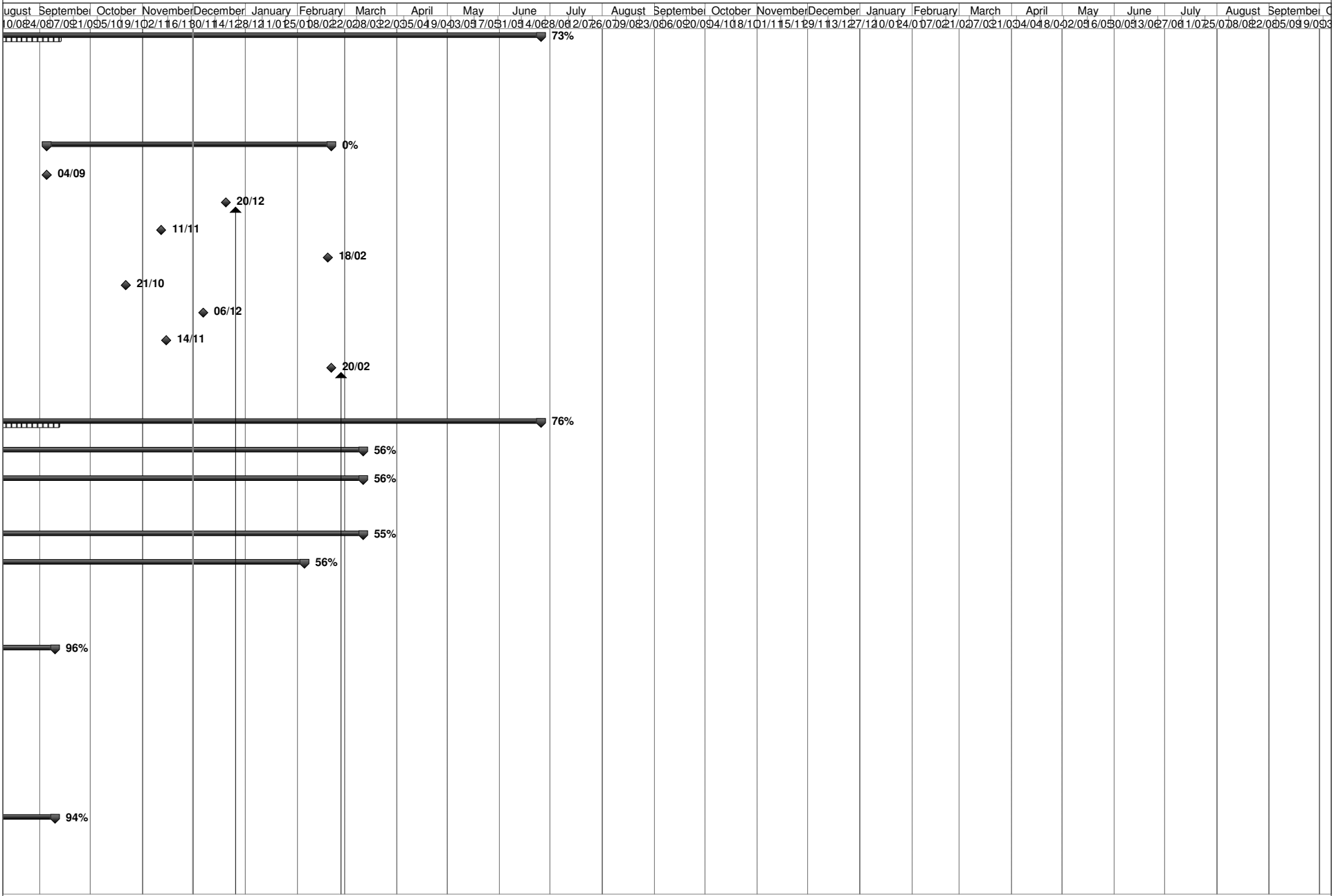
ID	% Complete	% Work Complete	Task Name	Start	Finish	Duration	September	October	November	December	January	February	March	April	May	June	July	August
618	0%	0%	ER - Invoice Milestone - Transition to TOU Billing	Tue 29/04/14	Tue 29/04/14	0 wks												
619	0%	0%	ER - Onsite Support for Transition to TOU	Wed 30/04/14	Tue 20/05/14	3 wks												
620	0%	0%	ER - Post Cutover Activities Completed	Tue 20/05/14	Tue 20/05/14	0 days												
621																		
622																		
623	72%	88%	MeterSense Project - ENWIN	Mon 15/10/12	Tue 11/03/14	70 wks												
624	67%	69%	Project Management	Mon 15/10/12	Tue 11/03/14	70 wks												
625	66%	66%	Project Management / Technical Oversight	Mon 15/10/12	Tue 11/03/14	70 wks												
628	66%	66%	Communication Management	Mon 15/10/12	Tue 11/03/14	70 wks												
633	66%	66%	Scope Management	Mon 15/10/12	Tue 11/03/14	70 wks												
635	67%	71%	Risk Management	Mon 15/10/12	Tue 11/03/14	70 wks												
638	100%	100%	Project Plan	Mon 15/10/12	Wed 20/02/13	17 wks												
643	100%	100%	NorthStar MeterSense Solution Definition Phase	Mon 15/10/12	Tue 05/02/13	15 wks												
644	100%	100%	Project Preparation	Mon 15/10/12	Fri 19/10/12	1 wk												
647	100%	100%	Project Kick-Off	Mon 15/10/12	Tue 23/10/12	1.4 wks												
651	100%	100%	NorthStar MeterSense Product Orientation Session - Training	Wed 24/10/12	Fri 02/11/12	1.6 wks												
655	100%	100%	Discovery	Wed 24/10/12	Wed 07/11/12	2.2 wks												
661	100%	100%	Physical Architecture Review / Recommendation	Mon 10/12/12	Tue 22/01/13	5 wks												
665	100%	100%	Solution Requirements Documents	Mon 12/11/12	Fri 07/12/12	4 wks												
671	100%	100%	Integration Requirements Document	Mon 12/11/12	Fri 07/12/12	4 wks												
677	100%	100%	Training / Change Management Plan	Mon 19/11/12	Tue 05/02/13	10 wks												
683	100%	100%	Test Plan	Mon 19/11/12	Tue 05/02/13	10 wks												
689	100%	100%	MS - Invoice Milestone - Sign off on Solutions Requirements Document	Fri 07/12/12	Fri 07/12/12	0 wks												
690	100%	100%	MeterSense Solution Design Phase	Wed 24/10/12	Wed 27/02/13	16.6 wks												
691	100%	100%	Integration Design Document Document	Mon 10/12/12	Wed 20/02/13	9 wks												
695	100%	100%	Test Cases / Scenarios Document	Wed 06/02/13	Wed 27/02/13	3 wks												
699	100%	100%	NorthStar MeterSense Base Solution Installation and Configuration	Wed 24/10/12	Fri 14/12/12	7.6 wks												

EnWin EnStar Project Plan - November 2013

ID	% Complete	% Work Complete	Task Name	Start	Finish	Duration	September	October	November	December	January	February	March	April	May	June	July	August
706	100%	100%	MeterSense Configuration and Construction Phase	Wed 02/01/13	Tue 30/04/13	16.8 wks												
707	100%	100%	Configuration and Construction	Wed 02/01/13	Tue 26/03/13	11.8 wks												
723	100%	100%	Milestone - Solution Feature Complete	Tue 26/03/13	Tue 26/03/13	0 wks												
724	100%	100%	User Acceptance Testing Detailed Plan Document	Wed 27/03/13	Tue 30/04/13	5 wks												
730	100%	100%	Training Detailed Schedule	Thu 28/02/13	Wed 27/03/13	4 wks												
734	80%	100%	MeterSense Solution Validation Phase	Wed 27/02/13	Thu 31/10/13	34.3 wks												
735	100%	100%	Testing Environment	Wed 27/02/13	Tue 26/03/13	4 wks												
737	100%	100%	Functional Testing	Wed 27/03/13	Tue 16/04/13	3 wks												
741	100%	100%	Integration Testing	Wed 17/04/13	Tue 30/04/13	2 wks												
746	100%	100%	Training	Mon 22/04/13	Thu 31/10/13	26.7 wks												
754	63%	100%	User Acceptance Testing	Mon 06/05/13	Thu 26/09/13	20 wks												
759	0%	0%	MS - Deliverable - Accepted Solution	Thu 31/10/13	Thu 31/10/13	0 wks												
760	67%	80%	1.5 Years of Historical Data Loading	Mon 26/08/13	Mon 13/01/14	19 wks												
761	100%	100%	MS - Perform Benchmarking	Mon 26/08/13	Fri 13/09/13	14 days												
762	100%	100%	MS - Finalize Timing of Data Load	Mon 16/09/13	Fri 04/10/13	3 wks												
763	75%	75%	MS - Assemble Historical Sensus and MV90 Data	Mon 18/11/13	Fri 13/12/13	4 wks												
764	0%	0%	MS - Load and Validate Data	Mon 16/12/13	Mon 13/01/14	17 days												
765	49%	23%	MeterSense Solution Production Environment Phase	Fri 01/02/13	Thu 06/03/14	55 wks												
766	89%	76%	Production Environment	Fri 01/02/13	Mon 13/01/14	47.4 wks												
767	100%	100%	MS - Procure and configure Production Server	Fri 01/02/13	Thu 14/02/13	2 wks												
768	100%	100%	MS - Setup Production Environment	Fri 15/02/13	Fri 15/03/13	4 wks												
769	100%	100%	MS - Regression Testing of Solution from Upgrade to RNI 3.1	Mon 04/03/13	Fri 15/03/13	2 wks												
770	0%	0%	MS - Confirm Production Environment Readiness	Tue 07/01/14	Mon 13/01/14	1 wk												
771	0%	0%	MS - MeterSense Soft Go-Live	Mon 13/01/14	Mon 13/01/14	0 wks												
772	0%	0%	Business Process Training (prior to Live)	Fri 13/12/13	Thu 16/01/14	4.2 wks												

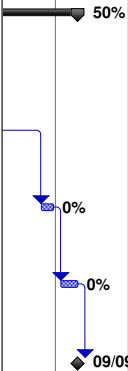
EnWin EnStar Project Plan - November 2013

ID	% Complete	% Work Complete	Task Name	Start	Finish	Duration	September	October	November	December	January	February	March	April	May	June	July	August
773	0%	0%	MS - Prepare Business Process Training	Fri 13/12/13	Wed 08/01/14	3 wks												
774	0%	0%	MS - Hold Business Process Training (Core Team)	Tue 14/01/14	Wed 15/01/14	2 days												
775	0%	0%	MS - Hold Business Process Training (Engg. Team)	Thu 16/01/14	Thu 16/01/14	1 day												
776	0%	0%	MS - Milestone - Business Process Training Complete	Thu 16/01/14	Thu 16/01/14	0 wks												
777	0%	0%	Production Environment Release	Mon 10/02/14	Thu 20/02/14	1.8 wks												
778	0%	0%	MS - Perform Cut-Over Activities	Mon 10/02/14	Fri 14/02/14	1 wk												
779	0%	0%	MS - Release Production Environment to End Customer Base	Mon 17/02/14	Mon 17/02/14	0.1 wks												
780	0%	0%	MS - Validate Success (Test Cases Sub-Set)	Mon 17/02/14	Thu 20/02/14	0.7 wks												
781	0%	0%	MS - Invoice Milestone - Solution Live	Thu 20/02/14	Thu 20/02/14	0 wks												
782	0%	0%	Post-Production Environment - Enhanced Support	Fri 21/02/14	Thu 06/03/14	2 wks												
783	0%	0%	MS - Support and Consult - as required	Fri 21/02/14	Thu 06/03/14	2 wks												
784	0%	0%	MS - Milestone - MeterSense Project Completed	Thu 06/03/14	Thu 06/03/14	0 wks												
785	0%	0%	Milestone - Final Acceptance of Project Closeout	Wed 25/06/14	Wed 25/06/14	0 wks												



EnWin EnStar Project Plan - November 2013

August	September	October	November	December	January	February	March	April	May	June	July	August	September	October	November	December	January	February	March	April	May	June	July	August	September	October	November	December																								
10/04/04	09/07/09	10/05/10	10/02/11	11/16/11	12/11/11	01/02/12	01/25/12	02/08/12	02/22/12	03/08/12	03/22/12	03/29/12	04/05/12	04/19/12	05/03/12	05/17/12	05/31/12	06/14/12	06/28/12	07/12/12	07/26/12	08/09/12	08/23/12	09/06/12	09/20/12	10/04/12	10/18/12	11/01/12	11/15/12	11/29/12	12/13/12	12/27/12	01/10/13	01/24/13	02/07/13	02/21/13	03/07/13	03/21/13	04/04/13	04/18/13	05/02/13	05/16/13	05/30/13	06/13/13	06/27/13	07/11/13	07/25/13	08/08/13	08/22/13	09/05/13	09/19/13	10/03/13



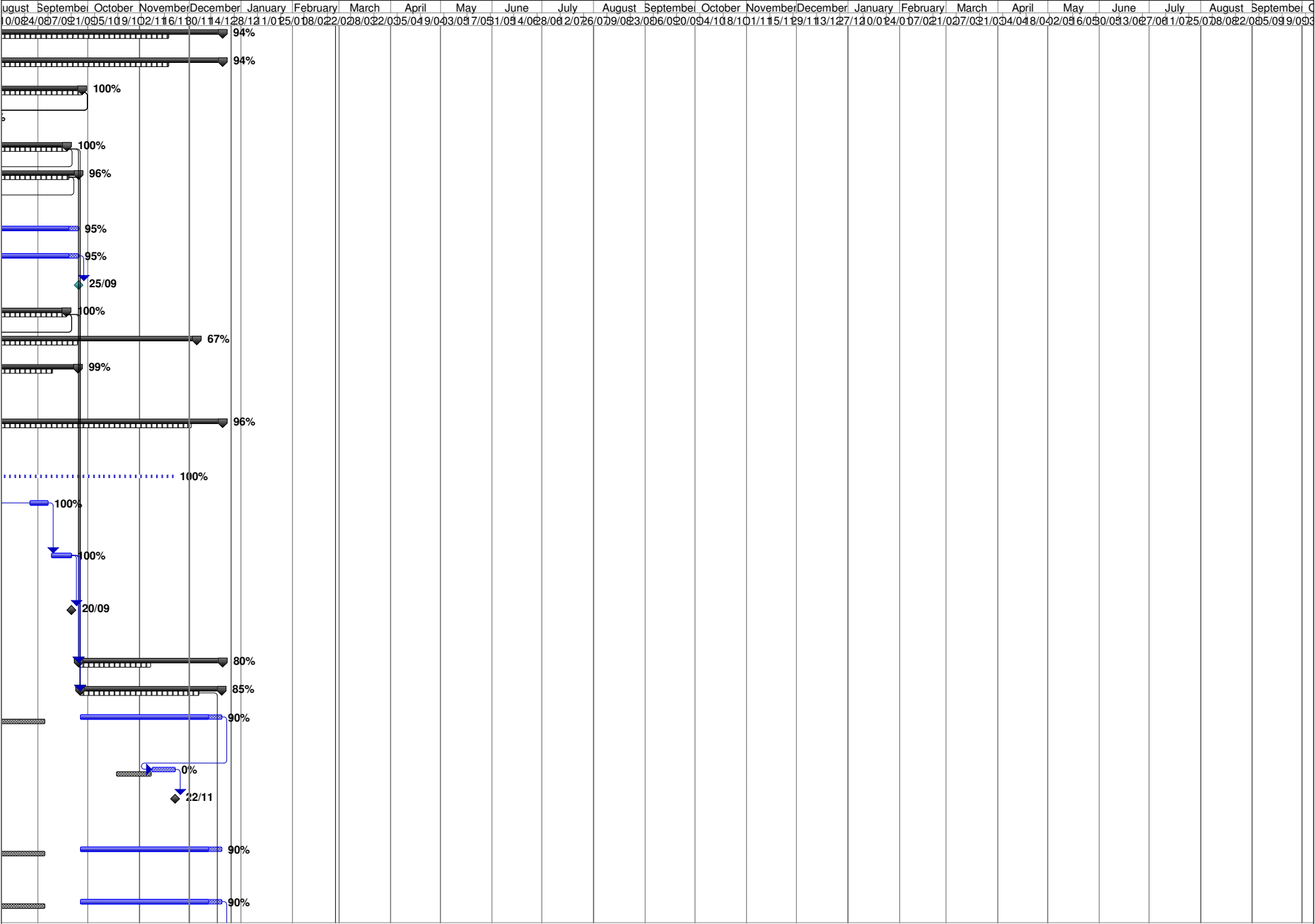
EnWin EnStar Project Plan - November 2013

August	September	October	November	December	January	February	March	April	May	June	July	August	September	October	November	December	January	February	March	April	May	June	July	August	September	October
10/08/08	07/09/08	09/10/08	11/09/08	12/10/08	01/11/09	02/12/08	03/01/09	04/02/09	05/03/09	06/04/09	07/05/09	08/06/09	09/07/09	10/08/09	11/09/09	12/10/09	01/11/10	02/12/09	03/01/10	04/02/10	05/03/10	06/04/10	07/05/10	08/06/10	09/07/10	10/08/10

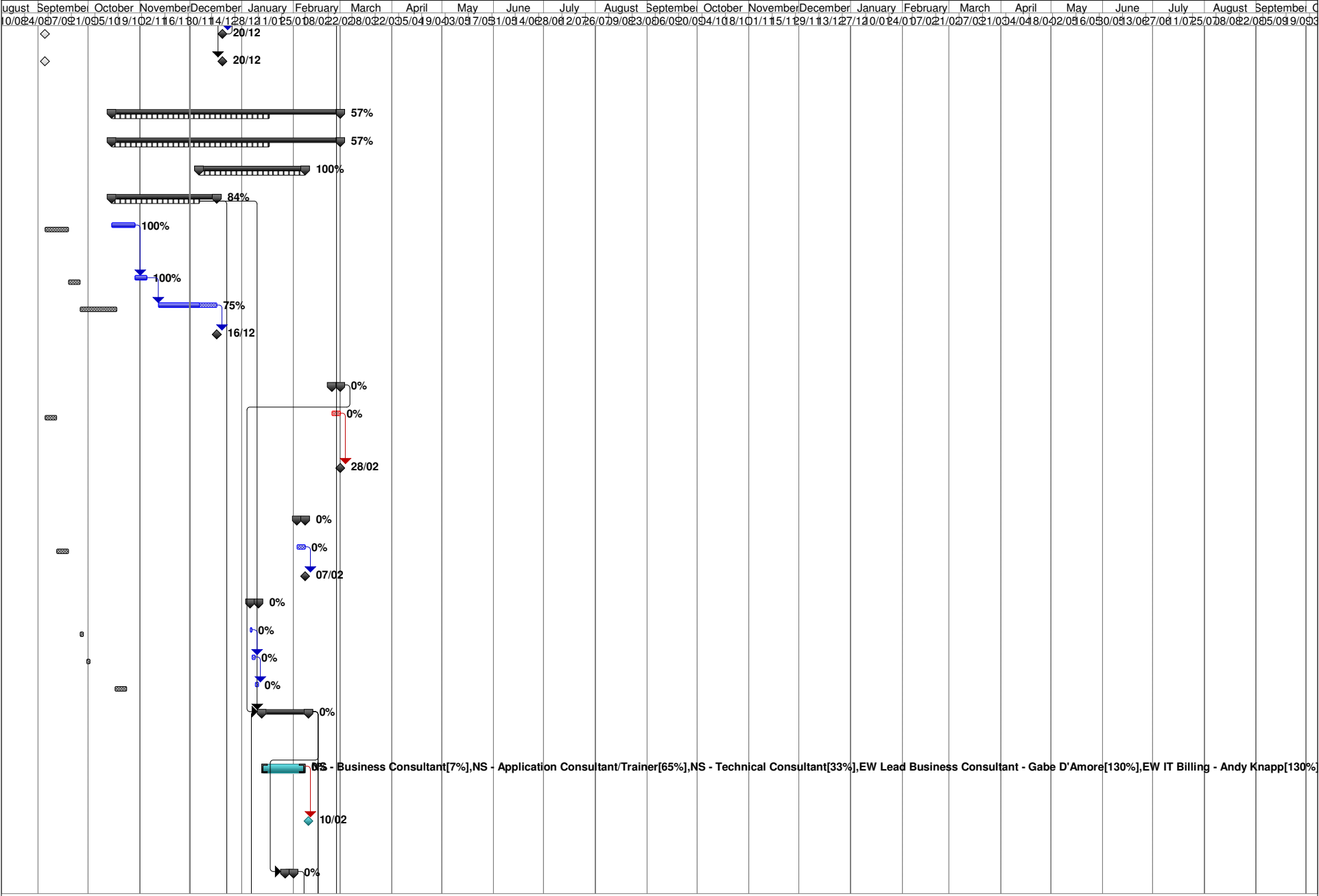
EnWin EnStar Project Plan - November 2013

August	September	October	November	December	January	February	March	April	May	June	July	August	September	October	November	December	January	February	March	April	May	June	July	August	September	October
10/08/2010	09/07/2010	09/21/2010	09/05/2010	09/19/2010	10/03/2010	10/17/2010	10/31/2010	11/14/2010	11/28/2010	12/11/2010	12/25/2010	01/08/2011	01/22/2011	02/05/2011	02/19/2011	03/05/2011	03/19/2011	04/02/2011	04/16/2011	05/03/2011	05/17/2011	06/03/2011	06/17/2011	07/01/2011	07/15/2011	07/29/2011

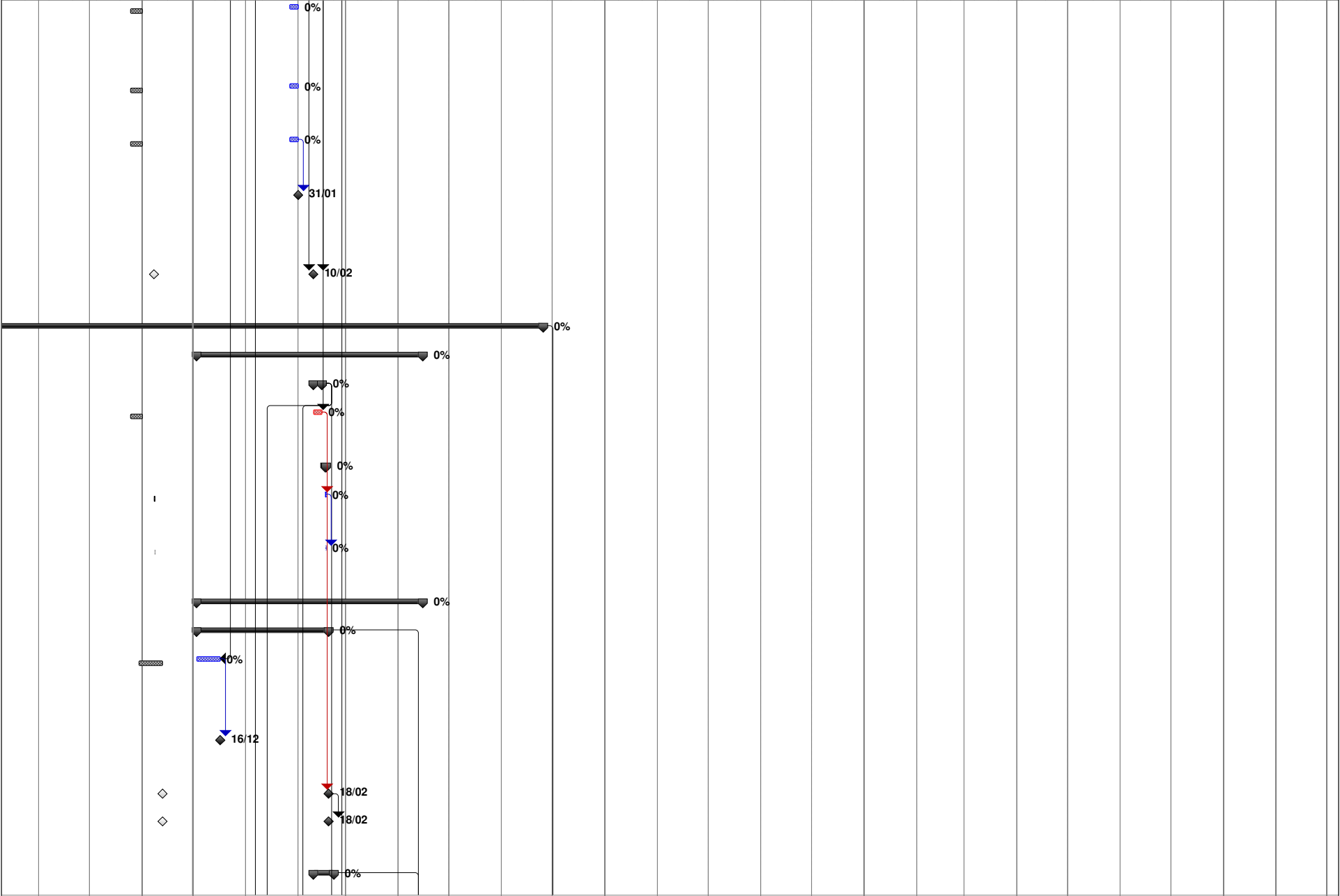
EnWin EnStar Project Plan - November 2013



EnWin EnStar Project Plan - November 2013

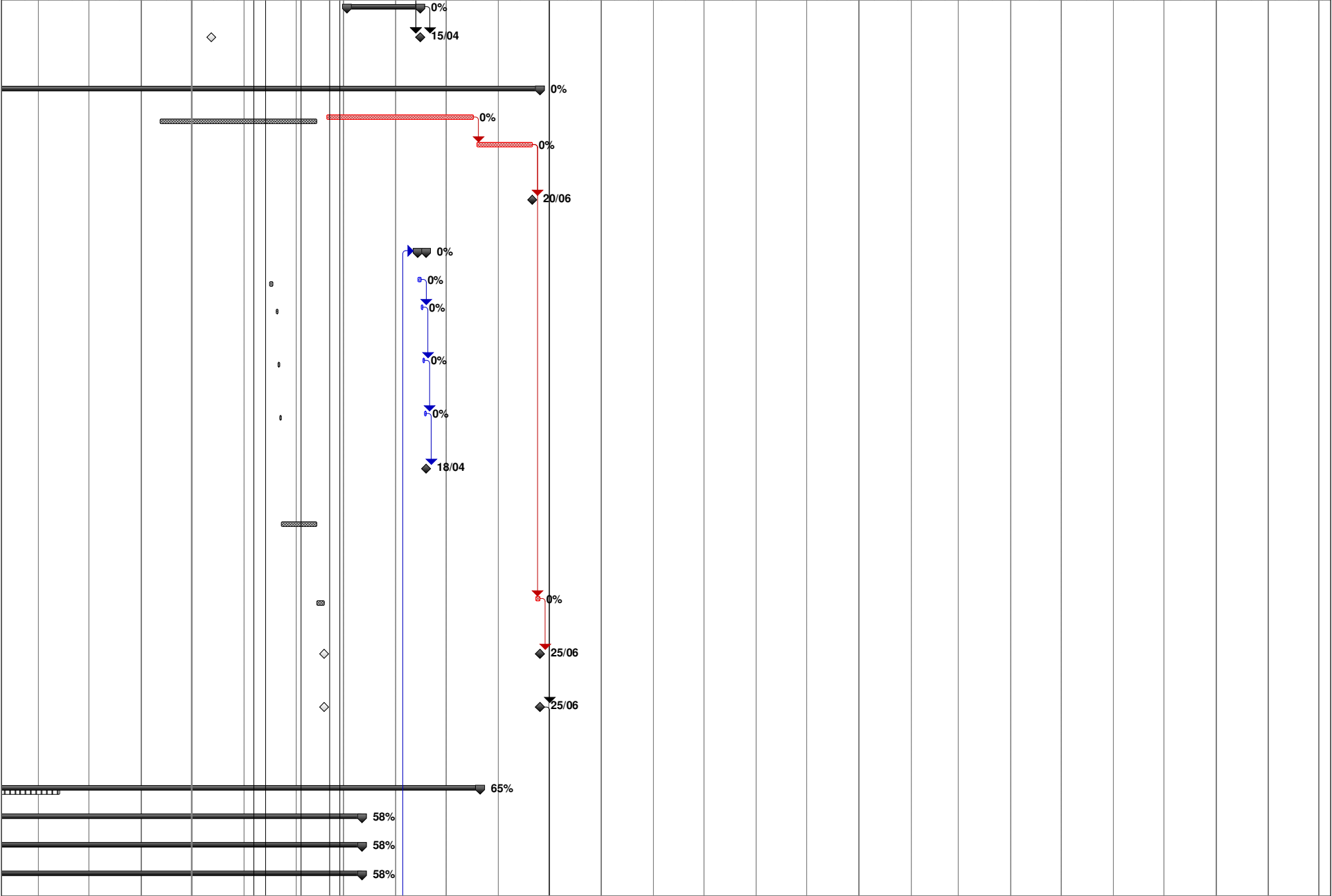


August	September	October	November	December	January	February	March	April	May	June	July	August	September	October	November	December	January	February	March	April	May	June	July	August	September	October	November	December
10/08/24	09/07/08	10/09/21	09/10/05	10/11/18	11/12/01	12/01/14	01/02/28	02/03/12	03/04/25	04/05/09	05/06/22	06/07/06	07/08/19	08/09/02	09/10/15	10/11/28	11/12/11	12/01/24	01/02/07	02/03/21	03/04/04	04/05/18	05/06/01	06/07/14	07/08/28	08/09/11	09/10/25	10/11/08

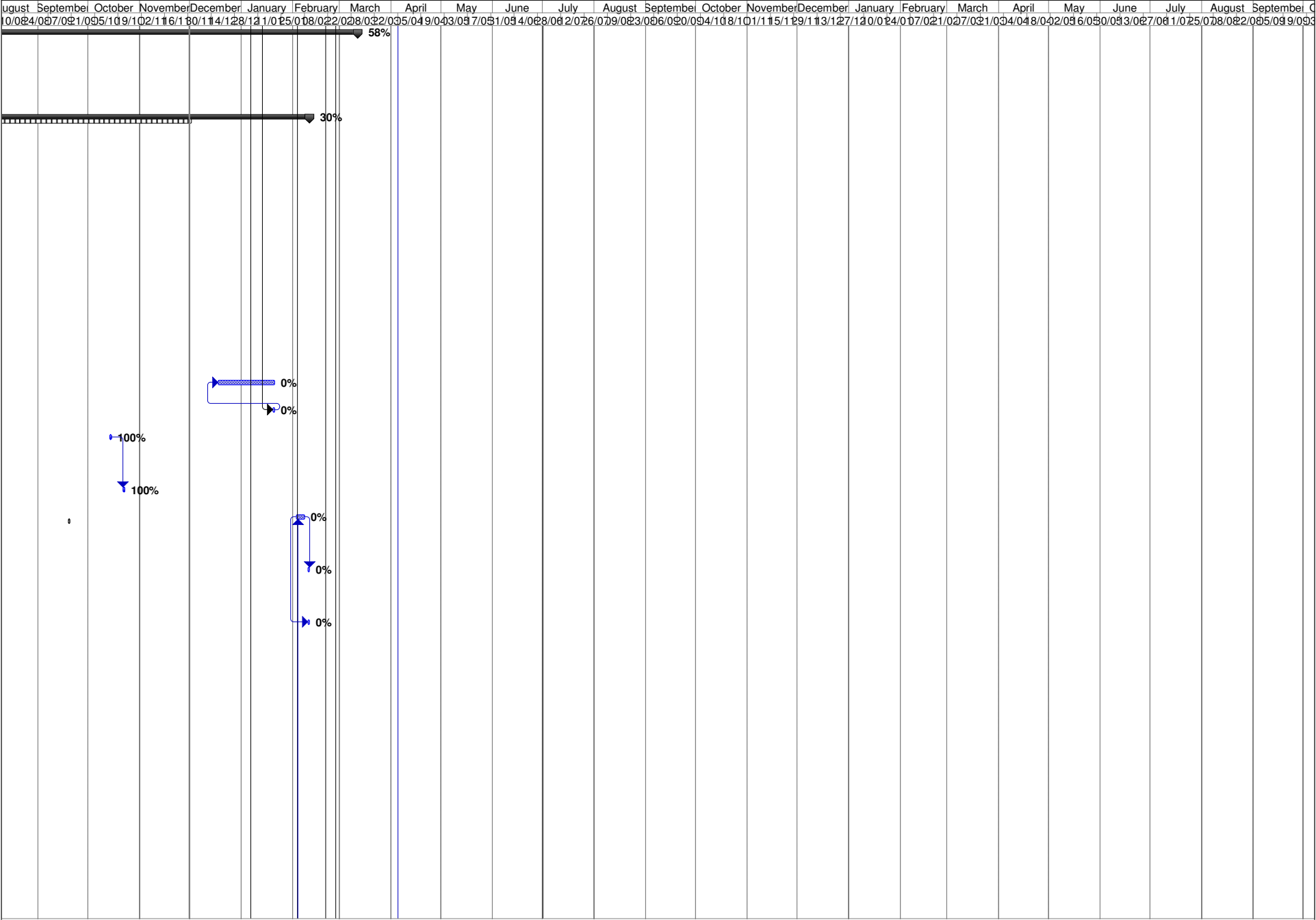


EnWin EnStar Project Plan - November 2013

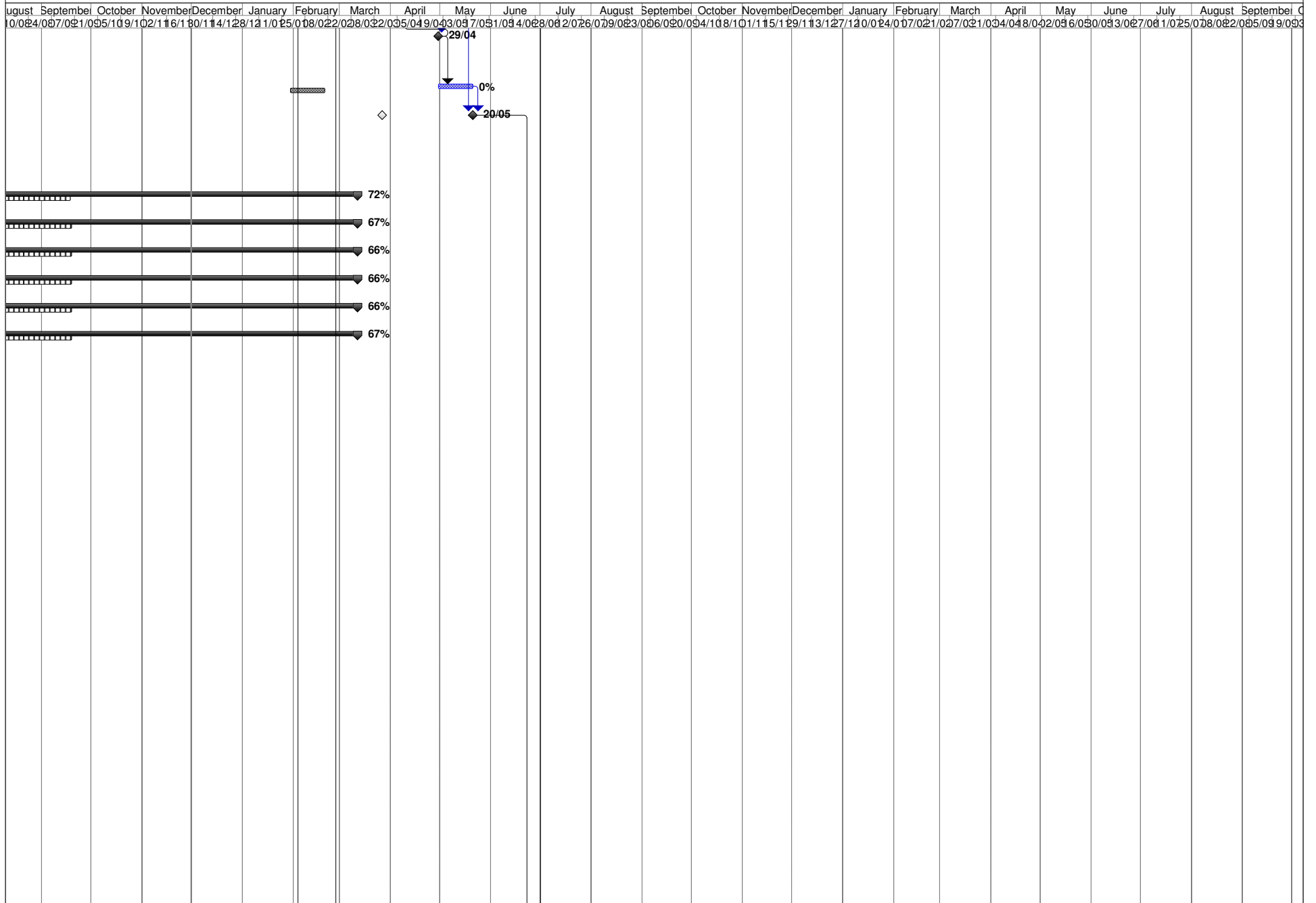
August	September	October	November	December	January	February	March	April	May	June	July	August	September	October	November	December	January	February	March	April	May	June	July	August	September	October	November	December										
10/08/04	08/07/02	1/09/51	09/10/2	12/11/6	18/10/4	14/12/8	12/11/0	1/05/0	08/02/2	08/03/0	03/05/4	09/04/3	03/07/5	07/03/1	03/04/6	08/02/7	02/06/7	07/09/0	03/08/6	09/05/0	04/10/8	10/11/5	12/9/13	12/7/13	12/10/4	07/02/1	02/07/2	10/03/4	04/08/2	02/09/6	05/09/0	03/03/2	02/07/0	10/02/5	07/08/2	08/02/5	09/09/0	03/09/3



EnWin EnStar Project Plan - November 2013



EnWin EnStar Project Plan - November 2013



EnWin EnStar Project Plan - November 2013

August 2010	September 2010	October 2010	November 2010	December 2010	January 2011	February 2011	March 2011	April 2011	May 2011	June 2011	July 2011	August 2011	September 2011	October 2011	November 2011	December 2011	January 2012	February 2012	March 2012	April 2012	May 2012	June 2012	July 2012	August 2012	September 2012	October 2012	November 2012	December 2012	January 2013	February 2013	March 2013	April 2013	May 2013	June 2013	July 2013	August 2013	September 2013	October 2013	November 2013

Page 25

EnWin EnStar Project Plan - November 2013

