

# Smart Meter Time of Use EnWin Utilities Ltd for EB-2012-0405

For the Period to: 31-Dec-13

## RPP Eligible Consumers:

Description	Residential	GS < 50kW Class	Total
Total Number of RPP-eligible consumers	77,629	7,190	84,819
Number of smart meters installed in the period	23	-5	18
Number of smart meters registered with the MDM/R in the period	0	0	0
Number of RPP consumers being charged TOU prices added in the period	0	0	0
Total cumulative number of smart meters installed in the service area at the end of the period	78,275	7,554	85,829
Total cumulative number of smart meters registered with the MDM/R at the end of the period	0	0	0
Total cumulative number of consumers being charged TOU prices at the end of the period	0	0	0

## Progress Report on SME Milestones

Activity	Original Scheduled Completion Date	Status	Expected Completion Date	Actual Completion Date
1. AMCC Internal Testing		Complete	July-30-10	July-30-10

Activity	Original Scheduled Completion Date	Status	Expected Completion Date	Actual Completion Date
2. CIS Internal Testing	September-04-13	Complete	December-13-13	December-13-13

Activity	Yes or No?	Expected Completion Date	Actual Completion Date
3. MDM/R Registration Application submitted	Yes	January-01-10	January-01-10

Activity	Yes or No?	Status, if Yes	Expected Completion Date	Actual Completion Date
4. Enrolment Wave requested and confirmed (Note: the SME will either confirm the requested start date or suggest an alternate)	Yes	Complete	March-25-13	January-23-13

Activity	Original Scheduled Completion Date	Status	Expected Completion Date	Actual Completion Date
5. Unit Testing	September-12-13	Complete	September-12-13	September-27-13

Activity	Original Scheduled Completion Date	Status	Expected Completion Date	Actual Completion Date
6. Submitted a completed Self Certification for Enrolment Testing SME_FORM_0007 (Note: This must be submitted at least one week prior to the confirmed enrolment wave start date)	August-26-13	Complete	October-30-13	October-22-13

Activity	Original Scheduled Completion Date	Status	Expected Completion Date	Actual Completion Date
7. System Integration Testing (SIT)	September-18-13	Complete	November-01-13	November-01-13

Activity	Original Scheduled Completion Date	Status	Expected Completion Date	Actual Completion Date
8. Qualification Testing (QT)	October-17-13	Complete	November-29-13	November-29-13

Activity	Original Scheduled Completion Date	Status	Expected Completion Date	Actual Completion Date
9. Self Certification - Cutover	November-28-13	Behind Schedule	March-17-14	

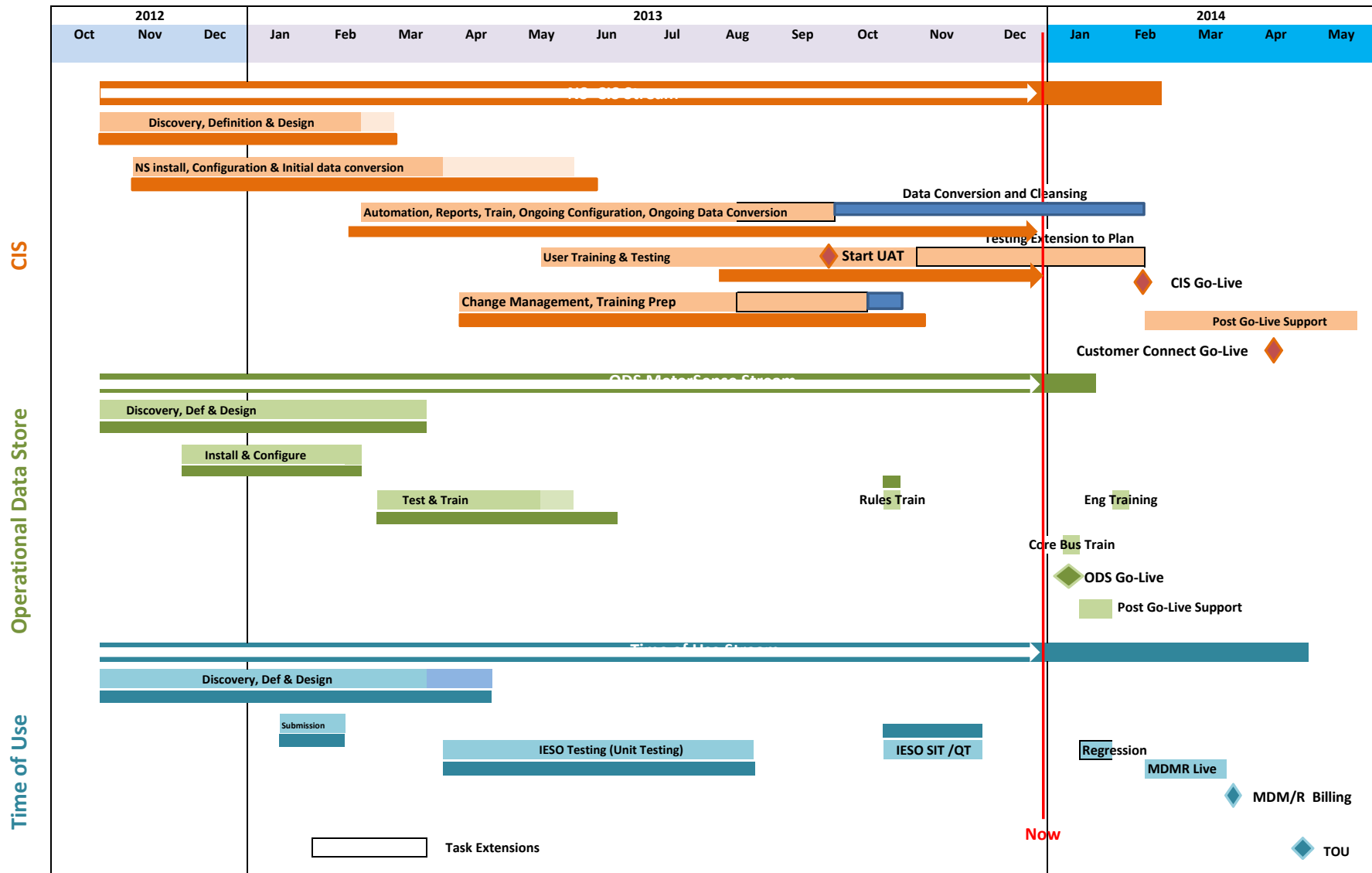
Activity	Original Scheduled Completion Date	Status	Expected Completion Date	Actual Completion Date
10. Transition to Production Operations	March-26-14	Behind Schedule	April-28-14	

## Additional Comments and Information

The project has fallen behind due to complications from the interaction of EnWin's Oracle database and a newly released version of the CIS. This created unusual and unexpected issues that are being addressed.

EnWin and the vendor have shifted activities within the timeline and increased the resources to support the corrective actions and incremental testing requirements.

EnWin expects to meet the requirement to apply TOU pricing under the Standard Supply Service Code to all of its customers by April 30, 2014 as approved in application EB-2012-0405.



EnWin Enstar Project Plan as of Dec 31, 2013

ID	% Complete	% Work Complete	Task Name	Start	Finish	Duration	Label	October	November	December	January	February	March	April	May	June	July	August
1	78%	89%	Draft EnWin NorthStar Implementation Project Plan	Mon 15/10/12	Wed 25/06/14	85.1 wks?												
2																		
3	100%	100%	START DATE (Tentative - Would need to be confirmed and reviewed at Contract Signature)	Mon 15/10/12	Mon 15/10/12	0 wks	◆ 15/10											
4	0%	0%	Milestone Validation section	Wed 04/09/13	Thu 20/02/14	23.2 wks												
5	0%	0%	CIS Accepted Solution (fixed)	Wed 04/09/13	Wed 04/09/13	0 wks												
6	0%	0%	CIS Accepted Solution tracked	Fri 20/12/13	Fri 20/12/13	0 wks												
7	0%	0%	CIS Go-Live (Fixed)	Mon 11/11/13	Mon 11/11/13	0 wks												
8	0%	0%	CIS Go-Live tracked	Tue 18/02/14	Tue 18/02/14	0 wks												
9	0%	0%	ERTH QT Complete (Fixed)	Mon 21/10/13	Mon 21/10/13	0 wks												
10	0%	0%	ERTH QT Complete tracked	Fri 06/12/13	Fri 06/12/13	0 wks												
11	0%	0%	MS Solution Live (fixed)	Thu 14/11/13	Thu 14/11/13	0 wks												
12	0%	0%	MS Solution Live tracked	Thu 20/02/14	Thu 20/02/14	0 wks												
13																		
14	77%	89%	CIS Project	Mon 15/10/12	Wed 25/06/14	85.1 wks												
15	56%	56%	Project Management	Mon 15/10/12	Tue 11/03/14	70 wks												
39	96%	99%	Solution Definition Phase	Mon 15/10/12	Mon 09/09/13	44.8 wks												
114	100%	100%	Solution Design Phase	Mon 15/10/12	Fri 22/02/13	17.3 wks												
162	99%	99%	Solution Configuration and Construction Phase	Mon 05/11/12	Wed 19/06/13	30.8 wks												
163	99%	99%	CIS Configuration and Construction	Mon 05/11/12	Wed 19/06/13	30.8 wks												
164	100%	100%	Configurations and Setups	Mon 05/11/12	Thu 21/03/13	18.1 wks												
180	100%	100%	Integrations	Mon 28/01/13	Fri 22/03/13	7.7 wks												
185	100%	100%	Conversion	Wed 02/01/13	Mon 03/06/13	21.4 wks												
196	100%	100%	Test Cases / Scenarios Document	Mon 04/02/13	Fri 29/03/13	7.8 wks												
200	100%	100%	Testing Tools	Thu 28/02/13	Thu 28/03/13	4 wks												
202	100%	100%	Additional EnWin Requirements/Functionality	Mon 21/01/13	Wed 19/06/13	21.2 wks												
259	75%	75%	NS - Milestone - Design documents finalized	Wed 19/06/13	Wed 19/06/13	0 wks												
260	0%	0%	NS - Finalize Customizations Development Design Document	Wed 19/06/13	Wed 19/06/13	0 wks												
261	100%	100%	NS - Milestone - Solution Feature Complete	Wed 19/06/13	Wed 19/06/13	0 wks												

EnWin Enstar Project Plan as of Dec 31, 2013

ID	% Complete	% Work Complete	Task Name	Start	Finish	Duration	September	October	November	December	January	February	March	April	May	June	July	August
262	100%	100%	User Acceptance Testing Detailed Plan Document	Tue 09/04/13	Mon 13/05/13	5 wks									100%			
268	80%	53%	Parallel Testing Detailed Plan document	Tue 09/04/13	Thu 02/05/13	3.5 wks									80%			
269	100%	100%	NS - Draft Parallel Testing Detailed Plan Document	Tue 09/04/13	Mon 15/04/13	1 wk									100%			
270	90%	90%	NS - Review Parallel Testing Detailed Plan Document	Tue 16/04/13	Mon 22/04/13	1 wk									90%			
271	90%	90%	NS - Finalize Parallel Testing Detailed Plan Document	Tue 23/04/13	Mon 29/04/13	1 wk									90%			
272	0%	0%	NS - Parallel Testing Detailed Plan Document Sign-Off	Tue 30/04/13	Thu 02/05/13	0.5 wks									0%			
273	84%	84%	Performance Testing Detailed Plan document	Tue 09/04/13	Mon 06/05/13	4 wks									84%			
278	41%	51%	Consolidated NS/MS/ERTH Go-Live Approach Document	Mon 29/04/13	Wed 29/05/13	4.4 wks									41%			
284	100%	100%	Training Detailed Schedule	Fri 05/04/13	Fri 17/05/13	6 wks									100%			
291	98%	99%	Solution Validation Phase	Thu 23/05/13	Fri 20/12/13	29.6 wks												
292	98%	99%	CIS Validation	Thu 23/05/13	Fri 20/12/13	29.6 wks												
293	100%	100%	Testing Environment	Thu 23/05/13	Fri 27/09/13	17.71 wks												
297	100%	100%	Conversion Activities	Fri 07/06/13	Tue 16/07/13	5.2 wks												
303	100%	100%	Functional Testing	Fri 07/06/13	Wed 18/09/13	14 wks												
308	89%	97%	Conversion Testing	Fri 07/06/13	Thu 03/10/13	16.24 wks												
313	100%	100%	Integration Testing	Tue 06/08/13	Wed 18/09/13	6 wks												
318	100%	100%	Enhanced ERTH Testing	Fri 12/07/13	Fri 13/12/13	21.44 wks												
324	99%	99%	Additional EnWin Requirements/Functionality Validation	Thu 20/06/13	Tue 24/09/13	13.2 wks												
325	100%	100%	Automation Platform Validation	Mon 26/08/13	Mon 09/09/13	2 wks												
335	100%	100%	Reports Validation	Thu 20/06/13	Mon 09/09/13	11 wks												
344	100%	100%	Integration Unit Testing	Thu 20/06/13	Tue 09/07/13	2.55 wks												
359	100%	100%	Development Work Validation	Thu 20/06/13	Thu 27/06/13	1.05 wks												
363	0%	0%	NS - Publish Testing Results	Tue 10/09/13	Tue 10/09/13	0.2 wks												

## EnWin Enstar Project Plan as of Dec 31, 2013

ID	% Complete	% Work Complete	Task Name	Start	Finish	Duration	September	October	November	December	January	February	March	April	May	June	July	August
364	0%	0%	NS - Deliverable - Additional EnWin Requirements / Functionality Validation Test Results Results	Tue 10/09/13	Tue 10/09/13	0 wks												
365	100%	100%	NS - User/admin Setup, Security set up and testing/training	Mon 23/09/13	Tue 24/09/13	2 days												
366	96%	92%	Training - Core Team Functional and Process Training	Wed 10/07/13	Fri 20/12/13	23 wks												
377	100%	100%	User Acceptance Testing	Thu 26/09/13	Fri 20/12/13	12 wks												
378	100%	100%	NS - Perform User Acceptance Testing (CIS, Reports Anywhere, Customer Connect)	Thu 26/09/13	Fri 20/12/13	12 wks												
379	100%	100%	ER - Retailer Parallel Billing	Fri 08/11/13	Fri 22/11/13	2 wks												
380	100%	100%	ER - Deliverable - Retailer Parallel Billing Test Results	Fri 22/11/13	Fri 22/11/13	0 wks												
381	100%	100%	NS - Support Customer during User Acceptance Testing	Thu 26/09/13	Fri 20/12/13	12 wks												
382	100%	100%	NS - Bug Resolution	Thu 26/09/13	Fri 20/12/13	12 wks												
383	100%	100%	NS - Invoice Milestone - Accepted Solution	Fri 20/12/13	Fri 20/12/13	0 wks												
384	0%	0%	NS - Deliverable - Accepted Source Code and Executable	Fri 20/12/13	Fri 20/12/13	0 wks												
385	62%	48%	Solution Transition Readiness Phase	Tue 15/10/13	Fri 28/02/14	19 wks												
386	62%	48%	CIS Transition Readiness	Tue 15/10/13	Fri 28/02/14	19 wks												
387	100%	100%	Pre-Production Environment	Fri 06/12/13	Fri 07/02/14	8.38 wks												
388	100%	100%	NS - Set-Up Pre-Production Environment and Tools	Fri 06/12/13	Fri 07/02/14	8.38 wks												
389	100%	100%	Training - End User	Tue 15/10/13	Mon 16/12/13	9 wks												
390	100%	100%	NS - Prepare End User Training	Tue 15/10/13	Mon 28/10/13	2 wks												
391	100%	100%	NS - Modify End User Training Material	Tue 29/10/13	Mon 04/11/13	1 wk												
392	100%	100%	NS - Conduct End-User Training	Tue 12/11/13	Mon 16/12/13	5 wks												
393	100%	100%	NS - Deliverable - End User Training Delivered	Mon 16/12/13	Mon 16/12/13	0 wks												
394	0%	0%	Training - Customer Connect	Mon 24/02/14	Fri 28/02/14	1 wk												
397	0%	0%	Training - EIS	Mon 03/02/14	Fri 07/02/14	1 wk												

EnWin Enstar Project Plan as of Dec 31, 2013

ID	% Complete	% Work Complete	Task Name	Start	Finish	Duration	September	October	November	December	January	February	March	April	May	June	July	August
400	0%	0%	<b>Conversion Activities</b>	<b>Mon 06/01/14</b>	<b>Fri 10/01/14</b>	<b>1 wk</b>												
401	0%	0%	NS - Extract Data	Mon 06/01/14	Mon 06/01/14	1 day												
402	0%	0%	NS - Convert Data	Tue 07/01/14	Wed 08/01/14	2 days												
403	0%	0%	NS - Review Data	Thu 09/01/14	Fri 10/01/14	2 days												
404	0%	0%	<b>Parallel - New Solution / Legacy Solution (Selected Accounts)</b>	<b>Mon 13/01/14</b>	<b>Mon 10/02/14</b>	<b>4 wks</b>												
405	0%	0%	NS - Support Customer during Parallel Training - CIS	Mon 13/01/14	Fri 07/02/14	4 wks												
406	0%	0%	NS - Deliverable - Parallel Training Completed	Mon 10/02/14	Mon 10/02/14	0 wks												
407	0%	0%	<b>NorthStar Support Services</b>	<b>Mon 27/01/14</b>	<b>Fri 31/01/14</b>	<b>1 wk</b>												
412	0%	0%	NS - Milestone - Accepted Solution (Transition Readiness Phase)	Mon 10/02/14	Mon 10/02/14	0 wks												
413	0%	0%	<b>CIS Solution Go-Live Phase</b>	<b>Mon 15/10/12</b>	<b>Wed 25/06/14</b>	<b>85.1 wks</b>												
453	0%	0%	NS - NorthStar CIS Project Implementation End Date	Wed 25/06/14	Wed 25/06/14	0 wks												
454																		
455																		
456	78%	93%	<b>MDM/R Project</b>	<b>Mon 15/10/12</b>	<b>Tue 20/05/14</b>	<b>80 wks?</b>												
457	74%	77%	<b>Project Management</b>	<b>Mon 15/10/12</b>	<b>Tue 11/03/14</b>	<b>70 wks</b>												
458	75%	75%	<b>Project Management</b>	<b>Mon 15/10/12</b>	<b>Tue 11/03/14</b>	<b>70 wks</b>												
461	75%	75%	<b>Communication Management</b>	<b>Mon 15/10/12</b>	<b>Tue 11/03/14</b>	<b>70 wks</b>												
464	75%	75%	<b>Risk Management</b>	<b>Mon 15/10/12</b>	<b>Tue 11/03/14</b>	<b>70 wks</b>												
466	100%	100%	<b>IESO Project Plan</b>	<b>Mon 26/11/12</b>	<b>Wed 16/01/13</b>	<b>6.2 wks</b>												
472	100%	100%	<b>Initial MDM/R Registration Activities</b>	<b>Wed 16/01/13</b>	<b>Tue 22/01/13</b>	<b>1 wk</b>												
480	30%	33%	<b>Ongoing MDM/R Registration Activities</b>	<b>Tue 22/01/13</b>	<b>Mon 10/02/14</b>	<b>53 wks</b>												
481	100%	100%	ER - Receive Network Connectivity Information	Tue 22/01/13	Tue 22/01/13	1 day												
482	100%	100%	ER - Submit MDM/R File Transfer Services Configuration Form (0014)	Fri 15/03/13	Fri 15/03/13	1 day												
483	100%	100%	ER - Submit Updated IESO Project Plan, if Required	Wed 03/04/13	Wed 03/04/13	1 day												
484	100%	100%	ER - Submit User Access Request Forms (013)	Wed 03/04/13	Wed 03/04/13	1 day												

EnWin Enstar Project Plan as of Dec 31, 2013

ID	% Complete	% Work Complete	Task Name	Start	Finish	Duration	September	October	November	December	January	February	March	April	May	June	July	August
485	100%	100%	ER - Receive GUI Access Information	Thu 04/04/13	Thu 11/04/13	6 days								100%				
486	0%	0%	ER - Prepare Cutover Strategy	Wed 18/12/13	Mon 20/01/14	4 wks												
487	0%	0%	ER - Submit Cutover Strategy	Mon 20/01/14	Mon 20/01/14	1 day												
488	100%	100%	ER - Prepare and submit Self Certification for Enrolment Testing Form (007)	Mon 14/10/13	Mon 14/10/13	1 day												
489	100%	100%	ER - Receive Acceptance for Enrolment Testing	Tue 22/10/13	Tue 22/10/13	1 day												
490	0%	0%	ER - Prepare Self-Certification - Cutover Readiness Self-Assessment Form (008)	Mon 03/02/14	Fri 07/02/14	1 wk												
491	0%	0%	ER - Submit Self-Certification - Cutover Readiness Self-Assessment Form (008)	Mon 10/02/14	Mon 10/02/14	1 day												
492	0%	0%	ER - Receive Acceptance for Cutover Readiness	Mon 10/02/14	Mon 10/02/14	1 day												
493	100%	100%	<b>Solution Definition Phase</b>	Mon 15/10/12	Tue 13/11/12	4.4 wks												
503	100%	100%	<b>Solution Design Phase</b>	Wed 09/01/13	Mon 10/06/13	21.4 wks												
504	100%	100%	<b>Business Process Changes Review</b>	Wed 13/02/13	Tue 26/03/13	5.6 wks												
511	100%	100%	ER - Milestone - Business Process Changes Completed	Tue 26/03/13	Tue 26/03/13	0 days												
512	100%	100%	CIS Design Document	Tue 26/03/13	Fri 29/03/13	0.6 wks												
514	100%	100%	Unit Test Planning	Wed 09/01/13	Wed 13/02/13	5.2 wks												
522	100%	100%	Cutover Planning	Thu 07/02/13	Mon 25/03/13	6.4 wks												
529	100%	100%	Staff Training	Mon 06/05/13	Mon 10/06/13	5 wks												
537	100%	100%	<b>Solution Construction Phase</b>	Fri 21/12/12	Mon 10/06/13	22.6 wks												
554	100%	100%	<b>Solution Validation Phase</b>	Thu 04/04/13	Tue 22/10/13	27.71 wks?												
555	100%	100%	<b>Unit Testing with IESO</b>	Thu 04/04/13	Tue 22/10/13	27.71 wks?												
556	100%	100%	Test AS/2 connectivity with all MDM/R environments	Thu 04/04/13	Thu 04/04/13	0.03 wks												
560	100%	100%	Data Validation	Thu 04/04/13	Thu 18/04/13	2 wks												
563	100%	100%	Test Execution	Wed 24/04/13	Fri 23/08/13	17 wks?												
574	100%	100%	Core Team Training	Mon 10/06/13	Thu 25/07/13	6.6 wks												
578	100%	100%	Testing Preparation	Mon 17/06/13	Mon 24/06/13	1.12 wks												
584	100%	100%	EnWin Unit Testing	Fri 26/07/13	Tue 22/10/13	11.91 wks												
588	100%	100%	ER - Milestone - Unit Testing Completed	Fri 30/08/13	Fri 30/08/13	0 days												

EnWin Enstar Project Plan as of Dec 31, 2013

ID	% Complete	% Work Complete	Task Name	Start	Finish	Duration	September	October	November	December	January	February	March	April	May	June	July	August
589	100%	100%	MDM/R Checkpoint - Unit Testing Completed	Fri 30/08/13	Fri 30/08/13	0 days												
590	100%	100%	ER - Deliverable - MDM/R Unit Testing Results	Mon 09/09/13	Mon 09/09/13	0 wks												
591	87%	100%	<b>Solution Transition Readiness</b>	Fri 20/09/13	Fri 31/01/14	18.2 wks												
592	100%	100%	<b>MDMR Enrolment - SIT</b>	Fri 20/09/13	Fri 08/11/13	7 wks												
600	100%	100%	<b>MDMR Enrolment - QT</b>	Mon 11/11/13	Fri 06/12/13	4 wks												
608	0%	0%	<b>MDMR Regression</b>	Mon 13/01/14	Fri 31/01/14	3 wks												
611	0%	0%	<b>Post Implementation Support</b>	Mon 17/02/14	Tue 20/05/14	13.4 wks												
621																		
622																		
623	80%	90%	<b>MeterSense Project - ENWIN</b>	Mon 15/10/12	Tue 11/03/14	70 wks												
624	75%	77%	<b>Project Management</b>	Mon 15/10/12	Tue 11/03/14	70 wks												
625	77%	77%	<b>Project Management / Technical Oversight</b>	Mon 15/10/12	Tue 11/03/14	70 wks												
626	77%	77%	<b>MS - Project Management</b>	Mon 15/10/12	Tue 11/03/14	70 wks												
627	77%	77%	<b>MS - Solution Oversight</b>	Mon 15/10/12	Tue 11/03/14	70 wks												
628	77%	77%	<b>Communication Management</b>	Mon 15/10/12	Tue 11/03/14	70 wks												
629	77%	77%	<b>MS - Weekly Status Report</b>	Mon 15/10/12	Tue 11/03/14	70 wks												
630	77%	77%	<b>MS - Weekly Project Management Status Meeting</b>	Mon 15/10/12	Tue 11/03/14	70 wks												
631	77%	77%	<b>MS - Weekly NorthStar MeterSense Status Meeting</b>	Mon 15/10/12	Tue 11/03/14	70 wks												
632	77%	77%	<b>MS - Weekly Customer MeterSense Status Meeting</b>	Mon 15/10/12	Tue 11/03/14	70 wks												
633	66%	66%	<b>Scope Management</b>	Mon 15/10/12	Tue 11/03/14	70 wks												
635	67%	71%	<b>Risk Management</b>	Mon 15/10/12	Tue 11/03/14	70 wks												
638	100%	100%	<b>Project Plan</b>	Mon 15/10/12	Wed 20/02/13	17 wks												
643	100%	100%	<b>NorthStar MeterSense Solution Definition Phase</b>	Mon 15/10/12	Tue 05/02/13	15 wks												
690	100%	100%	<b>MeterSense Solution Design Phase</b>	Wed 24/10/12	Wed 27/02/13	16.6 wks												
706	100%	100%	<b>MeterSense Configuration and Construction Phase</b>	Wed 02/01/13	Tue 30/04/13	16.8 wks												
734	100%	100%	<b>MeterSense Solution Validation Phase</b>	Wed 27/02/13	Mon 06/01/14	43 wks												
735	100%	100%	<b>Testing Environment</b>	Wed 27/02/13	Tue 26/03/13	4 wks												



EnWin Enstar Project Plan as of Dec 31, 2013

ID	% Complete	% Work Complete	Task Name	Start	Finish	Duration	September	October	November	December	January	February	March	April	May	June	July	August
736	100%	100%	MS - Set-Up Testing Environment	Wed 27/02/13	Tue 26/03/13	4 wks								100%				
737	100%	100%	Functional Testing	Wed 27/03/13	Tue 16/04/13	3 wks								100%				
738	100%	100%	MS - Perform Functional Testing	Wed 27/03/13	Tue 16/04/13	3 wks								100%				
739	100%	100%	MS - Issue and Configuration Resolution	Wed 27/03/13	Tue 16/04/13	3 wks								100%				
740	100%	100%	MS - Publish Functional Testing Results	Wed 27/03/13	Tue 16/04/13	3 wks								100%				
741	100%	100%	Integration Testing	Wed 17/04/13	Tue 30/04/13	2 wks								100%				
742	100%	100%	MS - Perform Integration Testing	Wed 17/04/13	Tue 30/04/13	2 wks								100%				
743	100%	100%	MS - Issue and Configuration Resolution	Wed 17/04/13	Tue 30/04/13	2 wks								100%				
744	100%	100%	MS - Publish Integration Testing Results	Wed 17/04/13	Tue 30/04/13	2 wks								100%				
745	100%	100%	MS - Deliverable - MeterSense Test Results	Tue 30/04/13	Tue 30/04/13	0 wks									30/04			
746	100%	100%	Training	Mon 22/04/13	Thu 31/10/13	26.7 wks												
747	100%	100%	Functional and Rule Engine Training	Mon 22/04/13	Thu 31/10/13	26.7 wks												
748	100%	100%	MS - Prepare Core Team Functional Training	Mon 22/04/13	Fri 26/04/13	1 wk								100%				
749	100%	100%	MS - Hold Core Team Functional Training	Mon 29/04/13	Thu 02/05/13	3.5 days								100%				
750	100%	100%	MS - VEE Working Session	Tue 29/10/13	Tue 29/10/13	1 day												
751	100%	100%	MS - Rules Engine Training	Wed 30/10/13	Thu 31/10/13	1.5 days												
752	100%	100%	MS - Invoice Milestone - Functional Training Complete	Fri 03/05/13	Fri 03/05/13	0 wks									03/05			
753	100%	100%	MS - Deliverable - Core Team Functional and Process / Rules Training	Fri 03/05/13	Fri 03/05/13	0 wks									03/05			
754	100%	100%	User Acceptance Testing	Mon 06/05/13	Mon 06/01/14	33.4 wks												
755	100%	100%	MS - Perform User Acceptance Testing	Mon 06/05/13	Fri 17/05/13	2 wks								100%				
756	100%	100%	MS - Support Customer during User Acceptance Testing	Mon 06/05/13	Fri 17/05/13	2 wks								100%				
757	100%	100%	MS - Issue and Configuration Resolution	Mon 06/05/13	Fri 17/05/13	2 wks								100%				
758	100%	100%	MS - Invoice Milestone - Accepted Solution	Fri 17/05/13	Mon 06/01/14	31.4 wks												
759	100%	100%	MS - Deliverable - Accepted Solution	Mon 06/01/14	Mon 06/01/14	0 wks												

EnWin Enstar Project Plan as of Dec 31, 2013

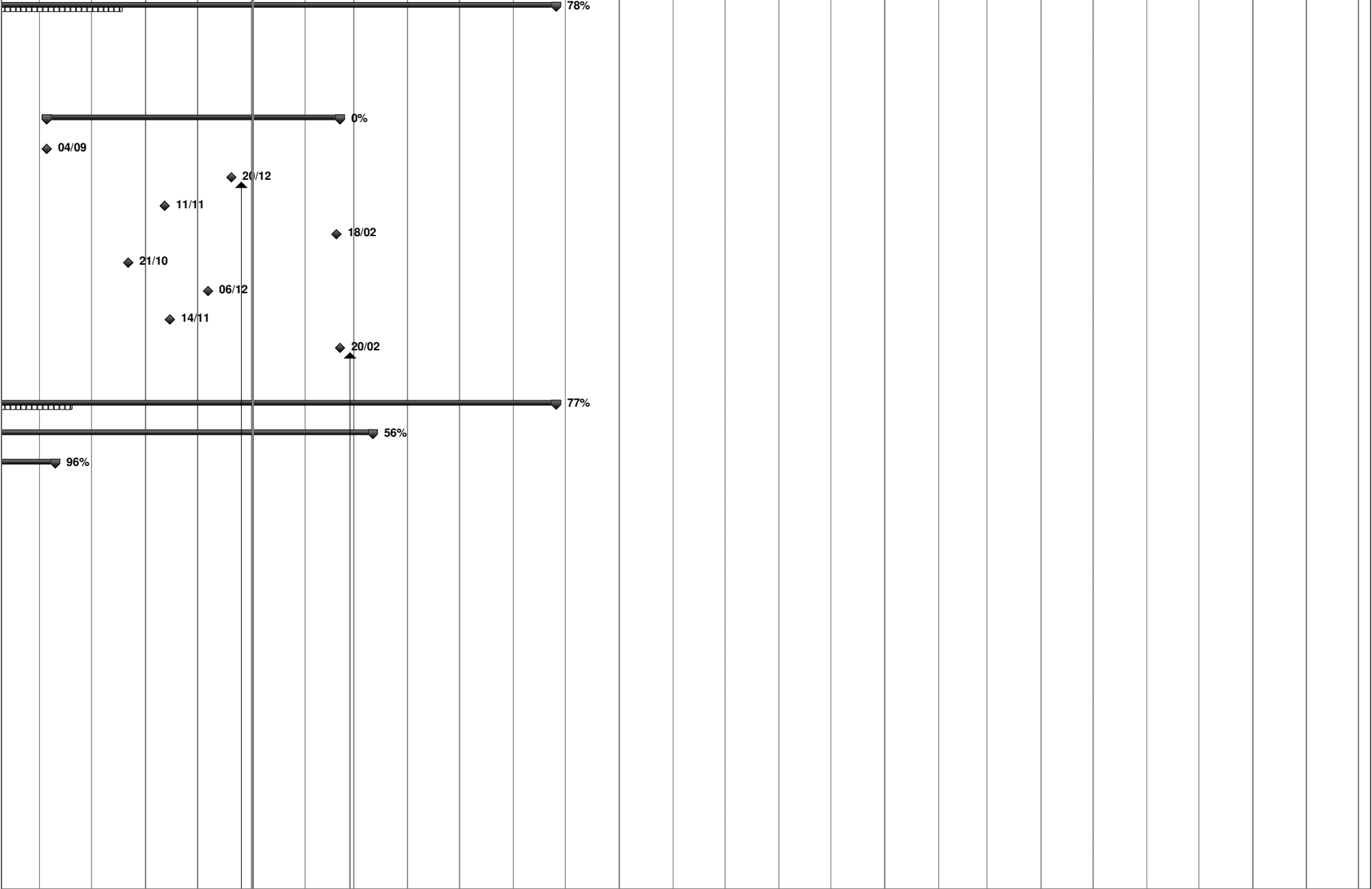
ID	% Complete	% Work Complete	Task Name	Start	Finish	Duration	September	October	November	December	January	February	March	April	May	June	July	August
760	67%	80%	1.5 Years of Historical Data Loading	Mon 26/08/13	Mon 13/01/14	19 wks												
761	100%	100%	MS - Perform Benchmarking	Mon 26/08/13	Fri 13/09/13	14 days												
762	100%	100%	MS - Finalize Timing of Data Load	Mon 16/09/13	Fri 04/10/13	3 wks												
763	75%	75%	MS - Assemble Historical Sensus and MV90 Data	Mon 18/11/13	Fri 13/12/13	4 wks												
764	0%	0%	MS - Load and Validate Data	Mon 16/12/13	Mon 13/01/14	17 days												
765	49%	23%	MeterSense Solution Production Environment Phase	Fri 01/02/13	Thu 06/03/14	55 wks												
766	89%	76%	Production Environment	Fri 01/02/13	Mon 13/01/14	47.4 wks												
767	100%	100%	MS - Procure and configure Production Server	Fri 01/02/13	Thu 14/02/13	2 wks												
768	100%	100%	MS - Setup Production Environment	Fri 15/02/13	Fri 15/03/13	4 wks												
769	100%	100%	MS - Regression Testing of Solution from Upgrade to RNI 3.1	Mon 04/03/13	Fri 15/03/13	2 wks												
770	0%	0%	MS - Confirm Production Environment Readiness	Tue 07/01/14	Mon 13/01/14	1 wk												
771	0%	0%	MS - MeterSense Soft Go-Live	Mon 13/01/14	Mon 13/01/14	0 wks												
772	0%	0%	Business Process Training (prior to Live)	Fri 13/12/13	Thu 16/01/14	4.2 wks												
773	0%	0%	MS - Prepare Business Process Training	Fri 13/12/13	Wed 08/01/14	3 wks												
774	0%	0%	MS - Hold Business Process Training (Core Team)	Tue 14/01/14	Wed 15/01/14	2 days												
775	0%	0%	MS - Hold Business Process Training (Engg. Team)	Thu 16/01/14	Thu 16/01/14	1 day												
776	0%	0%	MS - Milestone - Business Process Training Complete	Thu 16/01/14	Thu 16/01/14	0 wks												
777	0%	0%	Production Environment Release	Mon 10/02/14	Thu 20/02/14	1.8 wks												
778	0%	0%	MS - Perform Cut-Over Activities	Mon 10/02/14	Fri 14/02/14	1 wk												
779	0%	0%	MS - Release Production Environment to End Customer Base	Mon 17/02/14	Mon 17/02/14	0.1 wks												
780	0%	0%	MS - Validate Success (Test Cases Sub-Set)	Mon 17/02/14	Thu 20/02/14	0.7 wks												
781	0%	0%	MS - Invoice Milestone - Solution Live	Thu 20/02/14	Thu 20/02/14	0 wks												

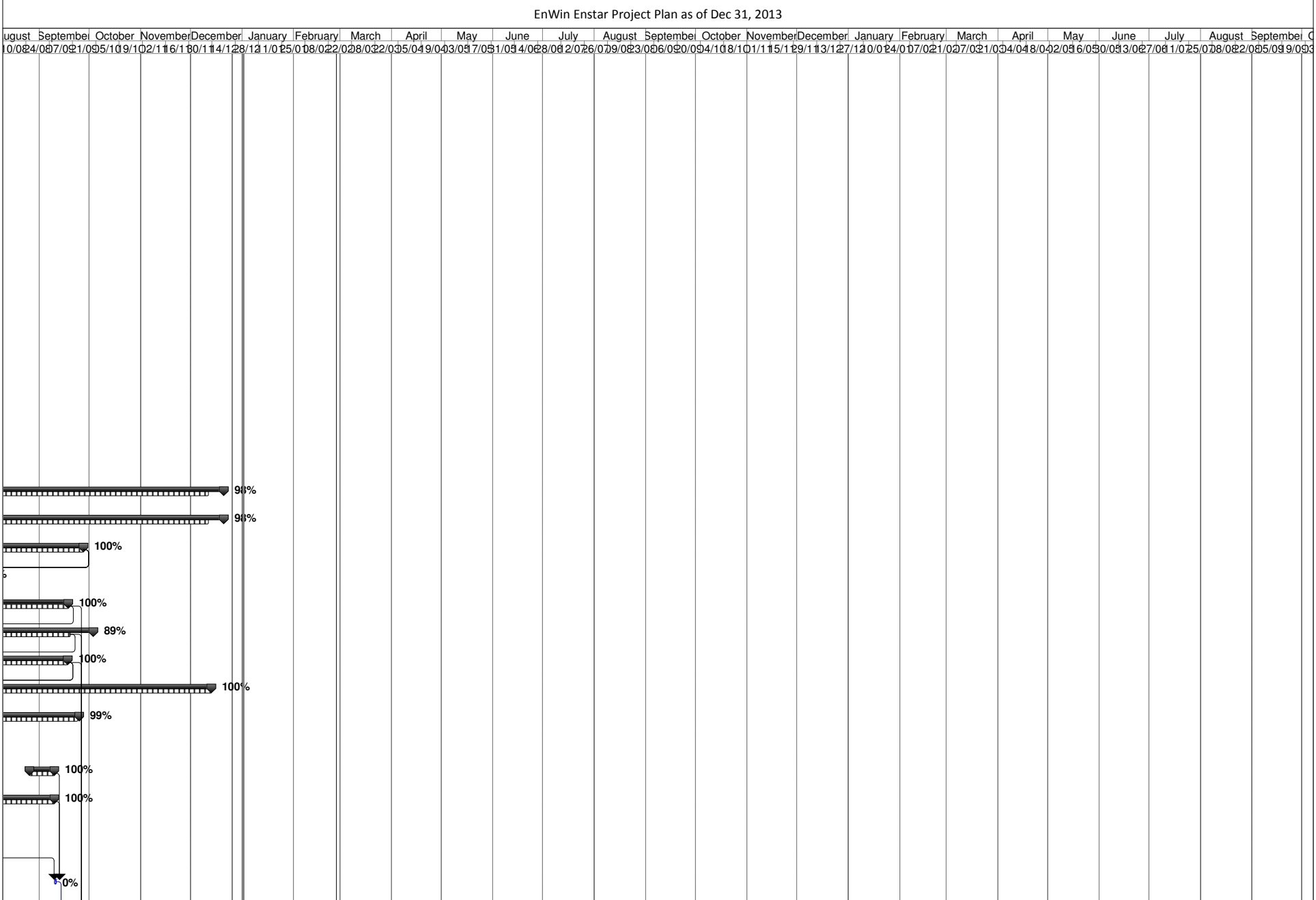
EnWin Enstar Project Plan as of Dec 31, 2013

ID	% Complete	% Work Complete	Task Name	Start	Finish	Duration	September	October	November	December	January	February	March	April	May	June	July	August
782	0%	0%	Post-Production Environment - Enhanced Support	Fri 21/02/14	Thu 06/03/14	2 wks												
783	0%	0%	MS - Support and Consult - as required	Fri 21/02/14	Thu 06/03/14	2 wks												
784	0%	0%	MS - Milestone - MeterSense Project Completed	Thu 06/03/14	Thu 06/03/14	0 wks												
785	0%	0%	Milestone - Final Acceptance of Project Closeout	Wed 25/06/14	Wed 25/06/14	0 wks												

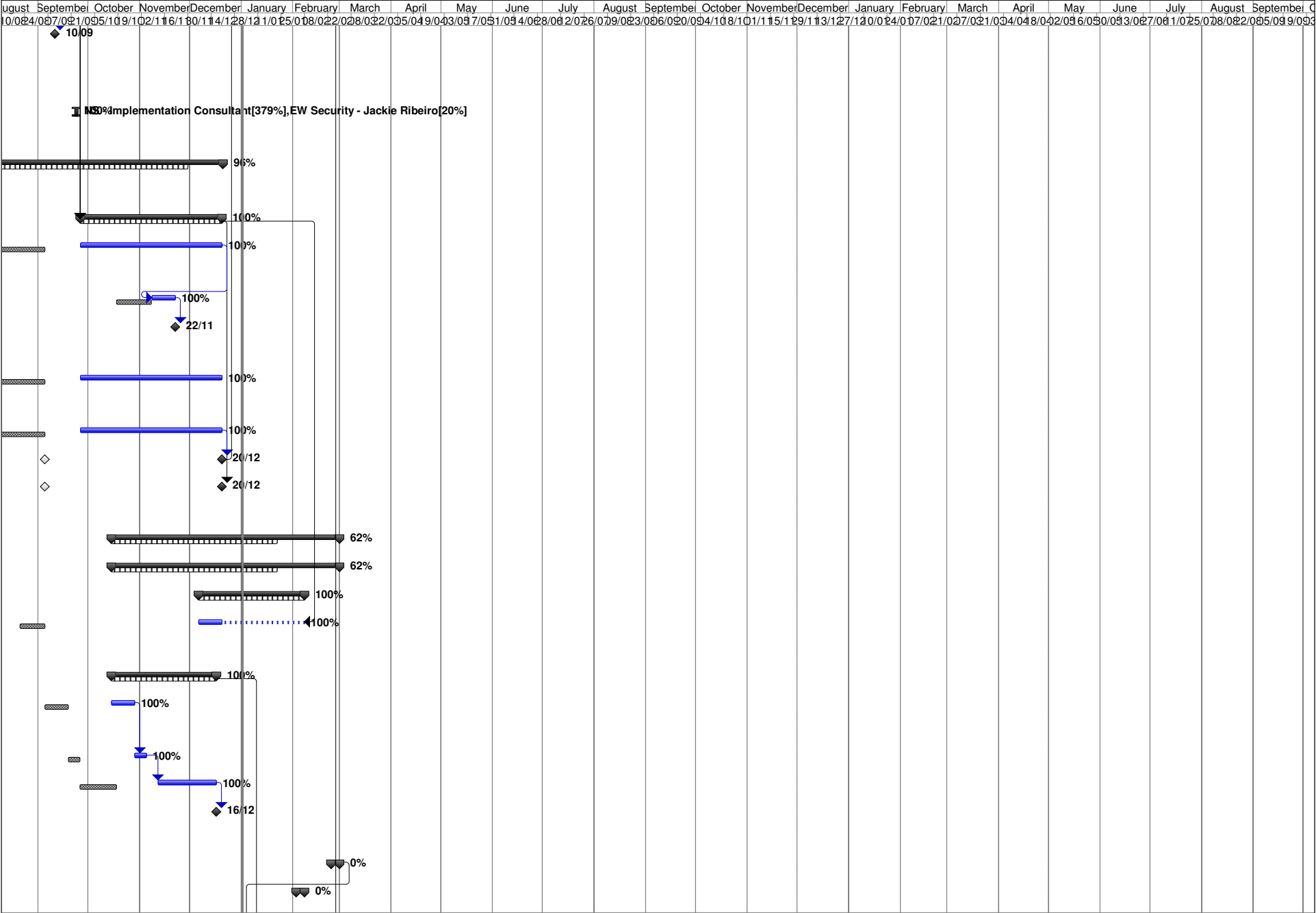
EnWin Enstar Project Plan as of Dec 31, 2013

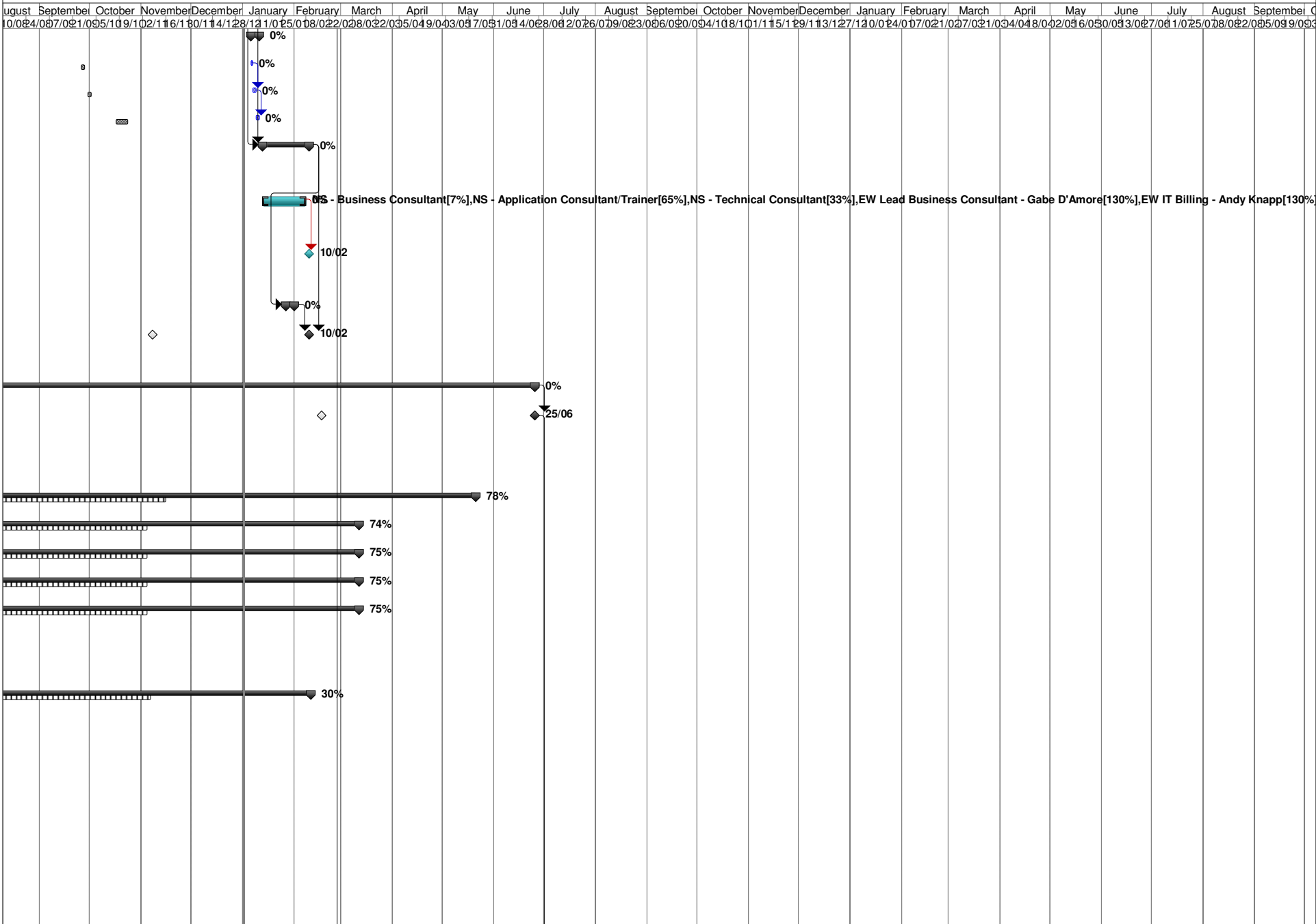
August	September	October	November	December	January	February	March	April	May	June	July	August	September	October	November	December	January	February	March	April	May	June	July	August	September	October	November	December																								
10/08	04/09	07/09	10/09	10/11	02/11	01/10	11/10	12/11	01/10	25/08	08/02	22/02	08/03	22/03	05/04	09/04	03/05	07/05	31/05	04/06	28/06	27/07	29/07	02/08	06/08	02/09	04/10	08/10	01/11	15/11	29/11	13/12	27/12	30/01	03/02	07/02	10/02	14/03	04/04	08/04	02/05	06/05	30/05	03/06	27/06	01/07	25/07	08/08	02/08	05/09	09/09	03/10

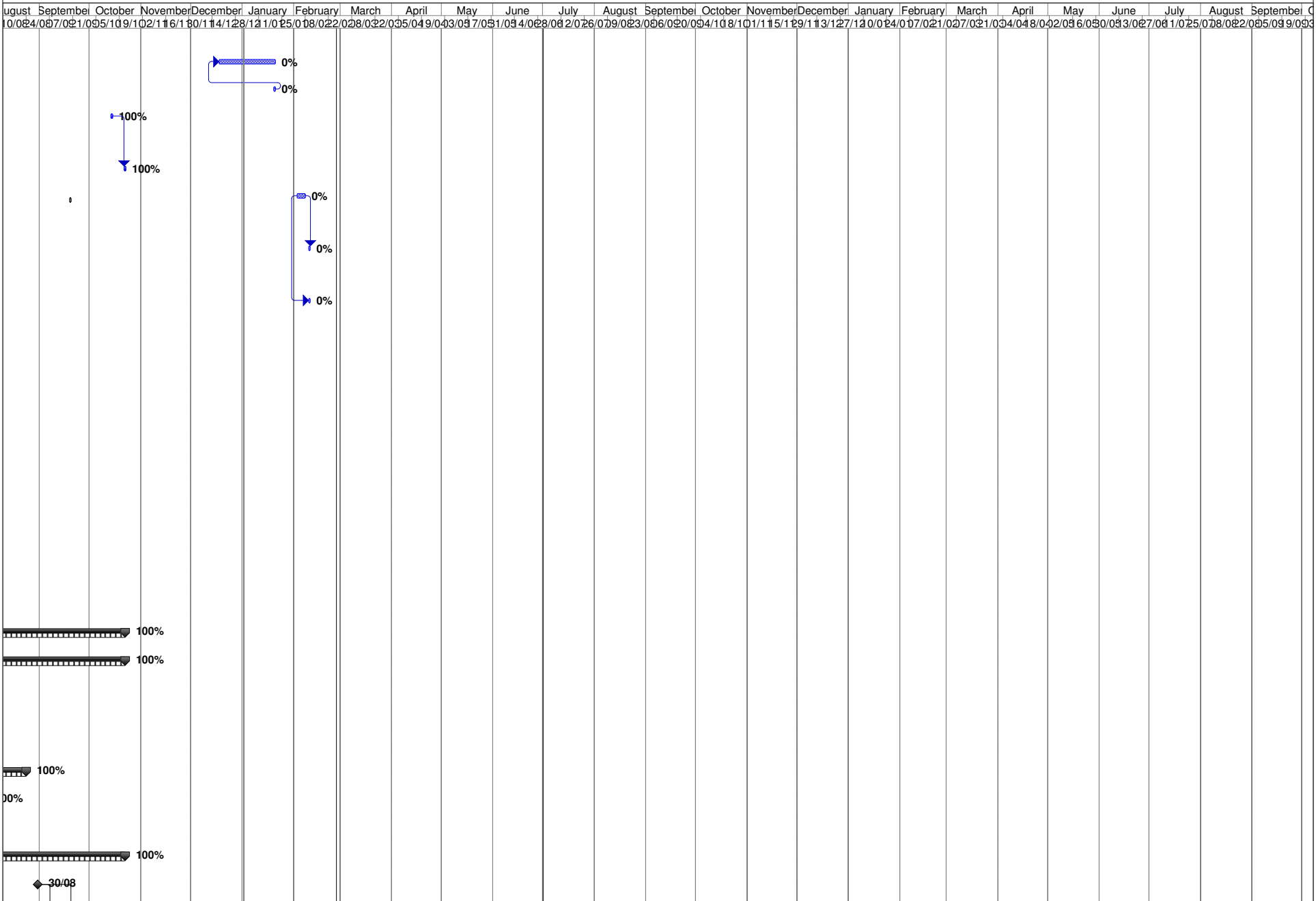




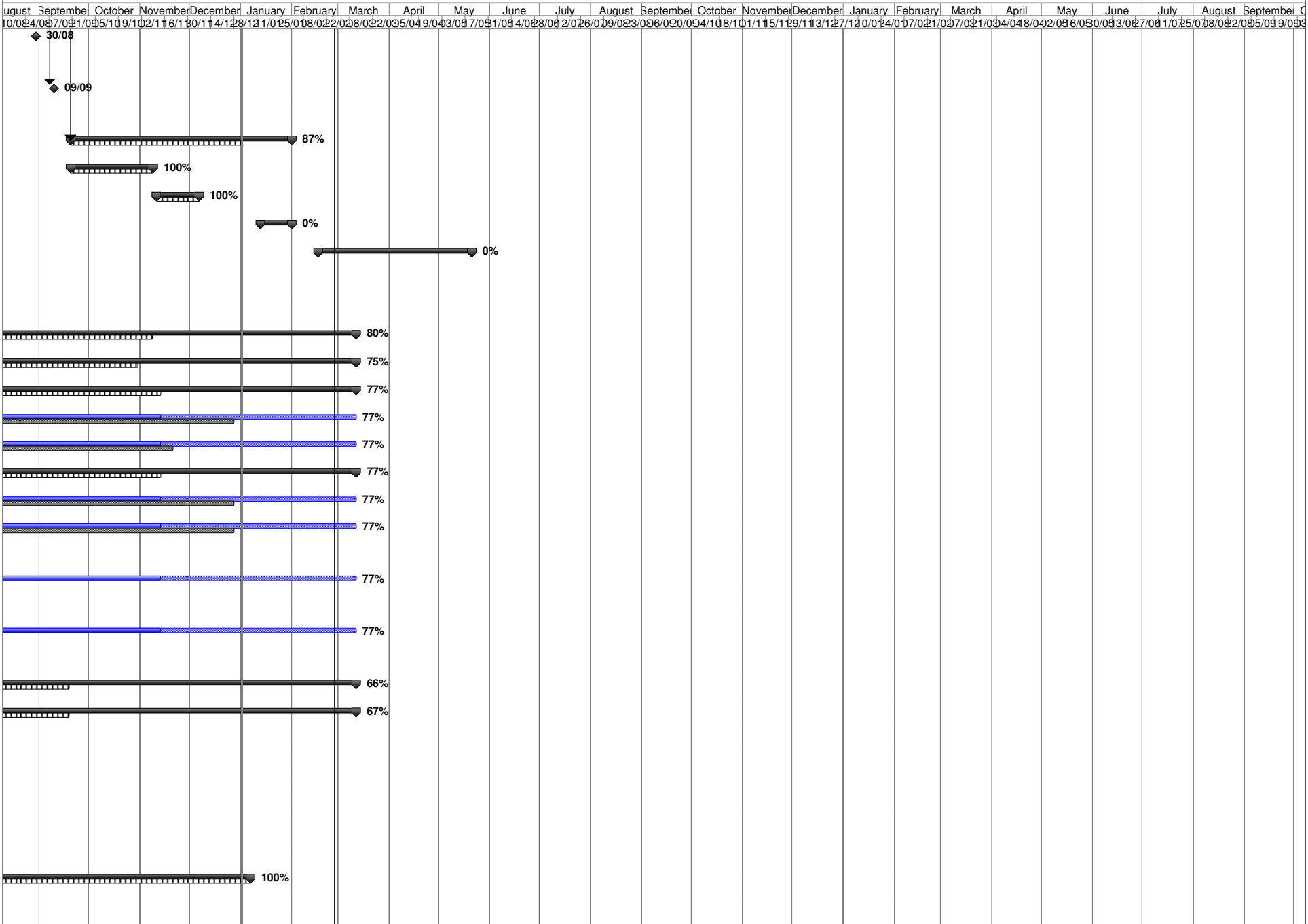
EnWin Enstar Project Plan as of Dec 31, 2013











EnWin Enstar Project Plan as of Dec 31, 2013

August	September	October	November	December	January	February	March	April	May	June	July	August	September	October	November	December	January	February	March	April	May	June	July	August	September	October
10/08/04	07/09/07	09/10/09	10/11/09	11/12/11	12/13/11	01/14/12	02/15/12	03/16/12	04/17/12	05/18/12	06/19/12	07/20/12	08/21/12	09/22/12	10/23/12	11/24/12	12/25/12	01/26/13	02/27/13	03/28/13	04/29/13	05/30/13	06/31/13	07/02/13	08/03/13	09/04/13

