

- NOTES:
1. INSTALLATION SHALL COMPLY WITH OESC 2012, 25TH EDITION.
 2. CONTRACTOR SHALL EXERCISE/IMPLEMENT ROAD USER AGREEMENT WITH CONCERNED AUTHORITIES OF TOWNSHIP/COUNTY/MUNICIPALITIES FOR THE RIGHT TO USE CERTAIN PORTION OF ROAD ALLOWANCES.
 3. CONTRACTOR SHALL REPORT ANY OBSTRUCTIONS AFFECTING THEIR PERFORMANCE BEFORE PROCEEDING WITH ANY WORK.
 4. CONTRACTOR SHALL VERIFY LOCATIONS OF ALL EXISTING UTILITIES BEFORE ANY EXCAVATION/BORING/DRILLING IS STARTED. CONTRACTOR MUST NOTIFY ONTARIO ONE CALL AND UTILITY OWNERS AT LEAST 5 DAYS PRIOR TO COMMENCING ANY WORK. FOR MORE INFORMATION, VISIT WWW.ON1CALL.COM OR CALL 1-800-400-2255.
 5. CONTRACTOR SHALL ENSURE THAT HDD CROSSINGS UNDER ROAD/HWY/RAILWAY MAINTAIN THE SAME SEPARATION ESTABLISHED BETWEEN TRENCHES SO AS TO MAINTAIN REQUIRED CABLE AMPACITY.
 6. CONTRACTOR SHALL VERIFY AND FOLLOW INSTRUCTIONS OF ENCROACHMENT PERMIT/APPROVAL FROM THE MINISTRY OF TRANSPORTATION-ONTARIO (MTO) BEFORE INSTALLATION OF UNDERGROUND CABLES NEAR HIGHWAYS. (E.G. 402 HWY)
 7. CONTRACTOR SHALL USE HDPE DR11 RATED CONDUITS FOR ROAD, HIGHWAY, UTILITIES, VEGETATION, AND PROTECTED AREA CROSSINGS FOR INSTALLATION VIA HORIZONTAL DIRECTIONAL DRILLING (HDD). CONTRACTOR SHALL USE STEEL CASINGS FOR RAILWAY CROSSINGS VIA HDD. CONTRACTORS SHALL INSTALL FIBER OPTIC CABLES IN A SEPARATE HDPE/PVC SCH. 40 CONDUITS FOR ALL CROSSINGS.
 8. THE CONTRACTOR MUST FIELD CHECK AND VERIFY INSTALLATION DETAIL SUCH AS DIMENSION, ELEVATION, SITE CONDITION ETC. AND REPORT ANY DISCREPANCIES TO THE SITE MANAGER (ENGINEER) PRIOR TO COMMENCING ANY WORK/FABRICATION.
 9. CONTRACTOR SHALL REFER TO DRAWINGS: 12039-NEC-D10-534 AND D10-536 FOR ALL CROSSINGS.
 10. ALL CABLE PENETRATING BUILDING WALLS & FLOORS SHALL BE COATED WITH FM APPROVED FIRE STOP COATING SUCH AS FLAMEASTIC 77 OR APPROVED EQUAL FOR 3 FEET ON EACH SIDE OF PENETRATION.
 11. DRAWINGS BASED ON CALLON DIETZ SITE PLAN DRAWINGS.
 12. ALL DRAWING REFERENCES PREFIXED WITH 12039-NEC-

LEGEND:

- 34.5kV COLLECTION FEEDER F1 TRENCH
- 34.5kV COLLECTION FEEDER F2 TRENCH
- 34.5kV COLLECTION FEEDER F3 TRENCH
- 34.5kV COLLECTION FEEDER F4 TRENCH
- 34.5kV COLLECTION FEEDER F5 TRENCH
- 34.5kV COLLECTION FEEDER F6 TRENCH
- 34.5kV COLLECTION FEEDER F7 TRENCH
- MET TOWER TRENCH

DRAWING REFERENCE PREFIXED BY 12039-NEC-
DETAIL REFERENCE, SECTION #

MVJB = MEDIUM VOLTAGE JUNCTION BOX
MES = METAL ENCLOSED SWITCHGEAR

C	28/11/13	REVISED LAYOUT AND MES LOCATIONS	MW	KP
B	10/09/13	REVISED LAYOUT AND MES LOCATIONS		DP
A	10/05/13	ISSUED FOR REVIEW AND COMMENT	MW	KP
REV.	DATE	DESCRIPTION	CHK'D	APP'D
REVISIONS				

Engineering Inc. - Electrical Power Specialists

Tel (905) 688-6857 Fax (905) 688-6926
www.onlineeng.com

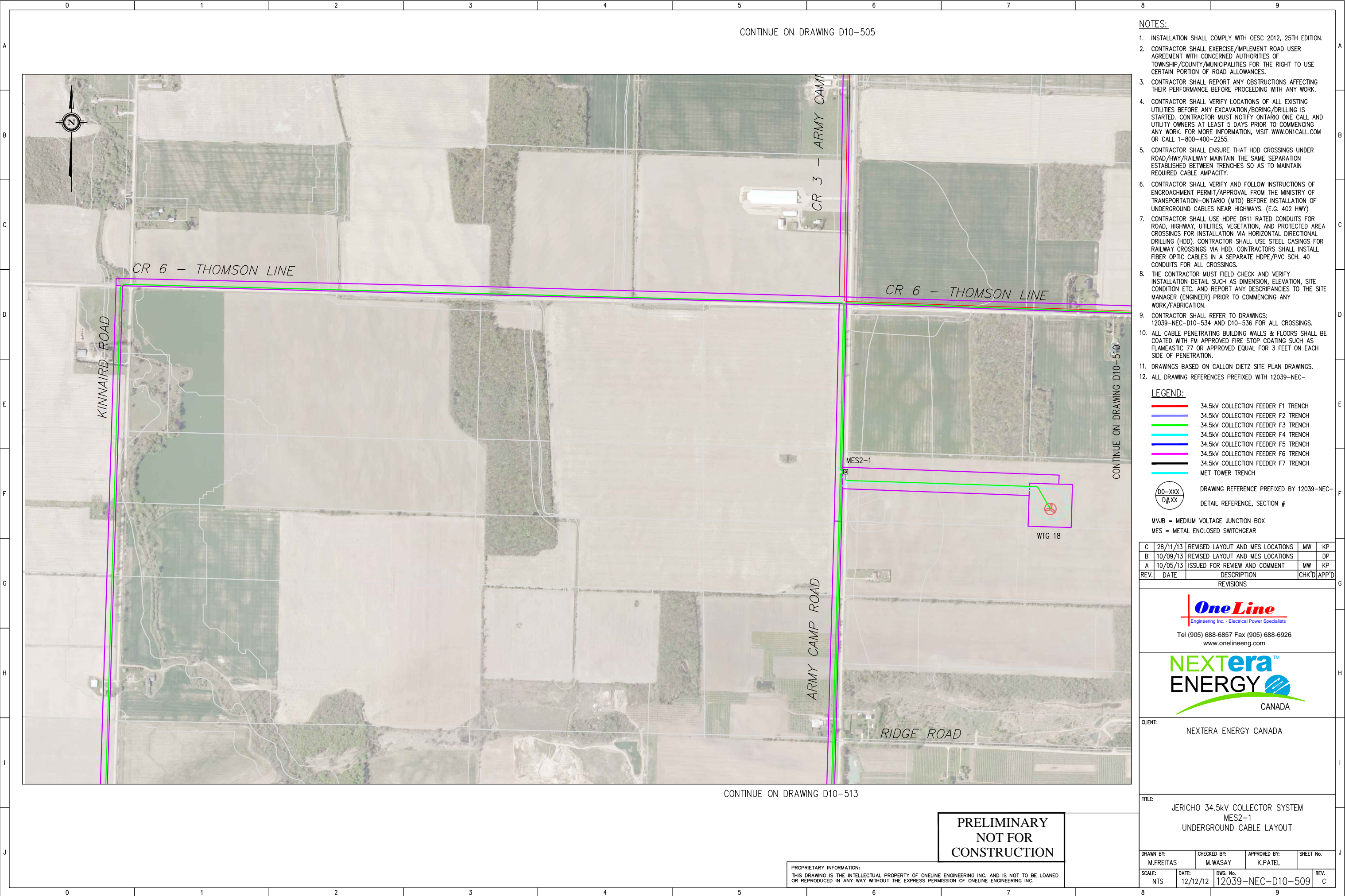
CLIENT: NEXTERA ENERGY CANADA

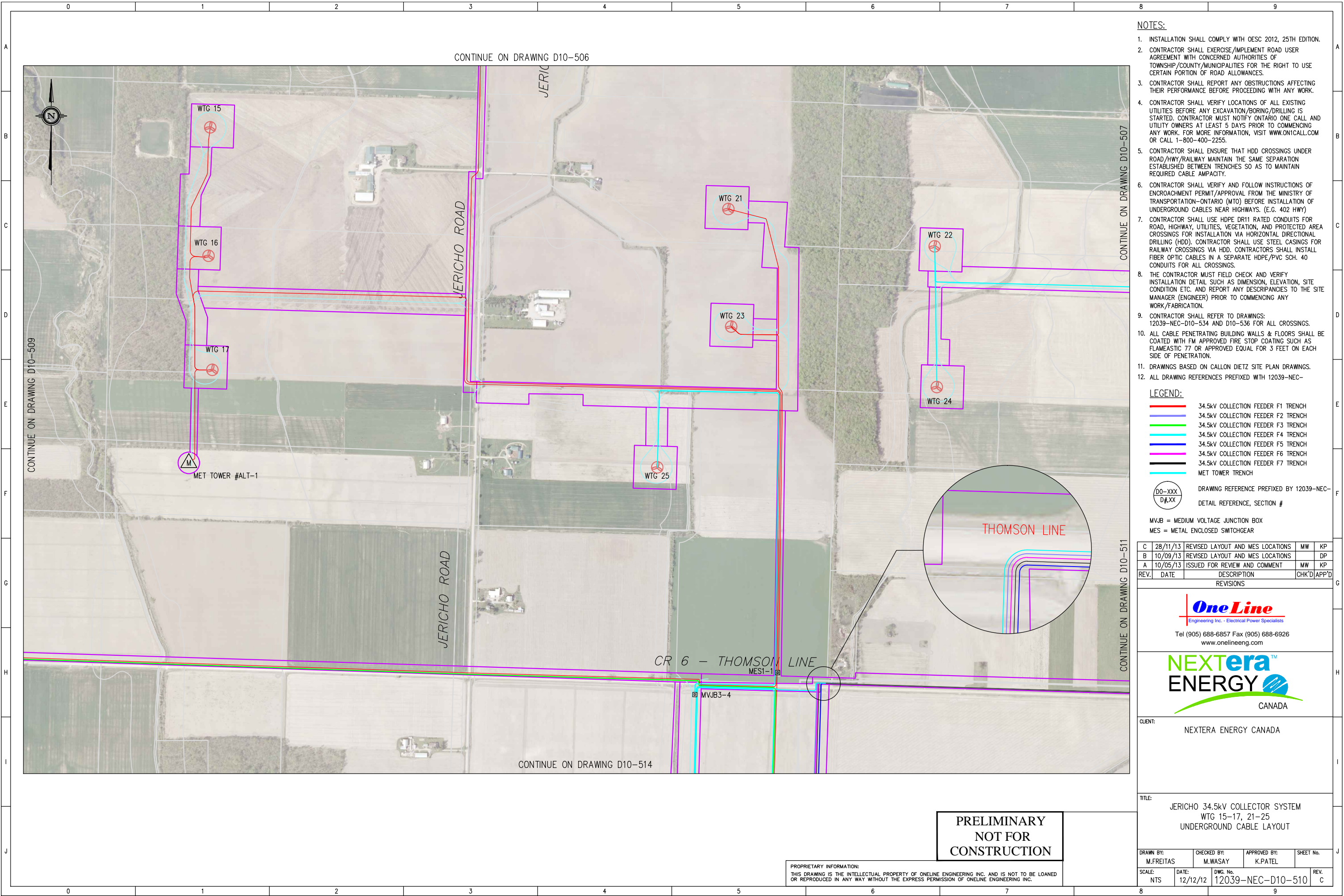
TITLE: JERICO 34.5kV COLLECTOR SYSTEM
WTG 32 & 33
UNDERGROUND CABLE LAYOUT

DRAWN BY: M.FREITAS	CHECKED BY: M.WASAY	APPROVED BY: K.PATEL	SHEET No.
SCALE: NTS	DATE: 12/12/12	DWG. No. 12039-NEC-D10-508	REV. C

PRELIMINARY
NOT FOR
CONSTRUCTION

PROPRIETARY INFORMATION:
THIS DRAWING IS THE INTELLECTUAL PROPERTY OF ONELINE ENGINEERING INC. AND IS NOT TO BE LOANED OR REPRODUCED IN ANY WAY WITHOUT THE EXPRESS PERMISSION OF ONELINE ENGINEERING INC.





- NOTES:
1. INSTALLATION SHALL COMPLY WITH OESC 2012, 25TH EDITION.
 2. CONTRACTOR SHALL EXERCISE/IMPLEMENT ROAD USER AGREEMENT WITH CONCERNED AUTHORITIES OF TOWNSHIP/COUNTY/MUNICIPALITIES FOR THE RIGHT TO USE CERTAIN PORTION OF ROAD ALLOWANCES.
 3. CONTRACTOR SHALL REPORT ANY OBSTRUCTIONS AFFECTING THEIR PERFORMANCE BEFORE PROCEEDING WITH ANY WORK.
 4. CONTRACTOR SHALL VERIFY LOCATIONS OF ALL EXISTING UTILITIES BEFORE ANY EXCAVATION/BORING/DRILLING IS STARTED. CONTRACTOR MUST NOTIFY ONTARIO ONE CALL AND UTILITY OWNERS AT LEAST 5 DAYS PRIOR TO COMMENCING ANY WORK. FOR MORE INFORMATION, VISIT WWW.ONTICALL.COM OR CALL 1-800-400-2255.
 5. CONTRACTOR SHALL ENSURE THAT HDD CROSSINGS UNDER ROAD/HWY/RAILWAY MAINTAIN THE SAME SEPARATION ESTABLISHED BETWEEN TRENCHES SO AS TO MAINTAIN REQUIRED CABLE AMPACITY.
 6. CONTRACTOR SHALL VERIFY AND FOLLOW INSTRUCTIONS OF ENCROACHMENT PERMIT/APPROVAL FROM THE MINISTRY OF TRANSPORTATION-ONTARIO (MTO) BEFORE INSTALLATION OF UNDERGROUND CABLES NEAR HIGHWAYS. (E.G. 402 HWY)
 7. CONTRACTOR SHALL USE HDPE DR11 RATED CONDUITS FOR ROAD, HIGHWAY, UTILITIES, VEGETATION, AND PROTECTED AREA CROSSINGS FOR INSTALLATION VIA HORIZONTAL DIRECTIONAL DRILLING (HDD). CONTRACTOR SHALL USE STEEL CASINGS FOR RAILWAY CROSSINGS VIA HDD. CONTRACTORS SHALL INSTALL FIBER OPTIC CABLES IN A SEPARATE HDPE/PVC SCH. 40 CONDUITS FOR ALL CROSSINGS.
 8. THE CONTRACTOR MUST FIELD CHECK AND VERIFY INSTALLATION DETAIL SUCH AS DIMENSION, ELEVATION, SITE CONDITION ETC. AND REPORT ANY DISCREPANCIES TO THE SITE MANAGER (ENGINEER) PRIOR TO COMMENCING ANY WORK/FABRICATION.
 9. CONTRACTOR SHALL REFER TO DRAWINGS: 12039-NEC-D10-534 AND D10-536 FOR ALL CROSSINGS.
 10. ALL CABLE PENETRATING BUILDING WALLS & FLOORS SHALL BE COATED WITH FM APPROVED FIRE STOP COATING SUCH AS FLAMEASTIC 77 OR APPROVED EQUAL FOR 3 FEET ON EACH SIDE OF PENETRATION.
 11. DRAWINGS BASED ON CALLON DIETZ SITE PLAN DRAWINGS.
 12. ALL DRAWING REFERENCES PREFIXED WITH 12039-NEC-

- LEGEND:
- 34.5kV COLLECTION FEEDER F1 TRENCH
 - 34.5kV COLLECTION FEEDER F2 TRENCH
 - 34.5kV COLLECTION FEEDER F3 TRENCH
 - 34.5kV COLLECTION FEEDER F4 TRENCH
 - 34.5kV COLLECTION FEEDER F5 TRENCH
 - 34.5kV COLLECTION FEEDER F6 TRENCH
 - 34.5kV COLLECTION FEEDER F7 TRENCH
 - MET TOWER TRENCH
- D0-XXX
D#XX
- DRAWING REFERENCE PREFIXED BY 12039-NEC-
DETAIL REFERENCE, SECTION #
- MVJB = MEDIUM VOLTAGE JUNCTION BOX
MES = METAL ENCLOSED SWITCHGEAR

C	28/11/13	REVISED LAYOUT AND MES LOCATIONS	MW	KP
B	10/09/13	REVISED LAYOUT AND MES LOCATIONS		DP
A	10/05/13	ISSUED FOR REVIEW AND COMMENT	MW	KP
REV.	DATE	DESCRIPTION	CHK'D	APP'D
REVISIONS				

OneLine
Engineering Inc. - Electrical Power Specialists
Tel (905) 688-6857 Fax (905) 688-6926
www.onelineeng.com

NEXTERA ENERGY
CANADA

CLIENT:
NEXTERA ENERGY CANADA

TITLE:
JERICO 34.5kV COLLECTOR SYSTEM
WTG 15-17, 21-25
UNDERGROUND CABLE LAYOUT

DRAWN BY: M.FREITAS	CHECKED BY: M.WASAY	APPROVED BY: K.PATEL	SHEET No.
SCALE: NTS	DATE: 12/12/12	DWG. No. 12039-NEC-D10-510	REV. C

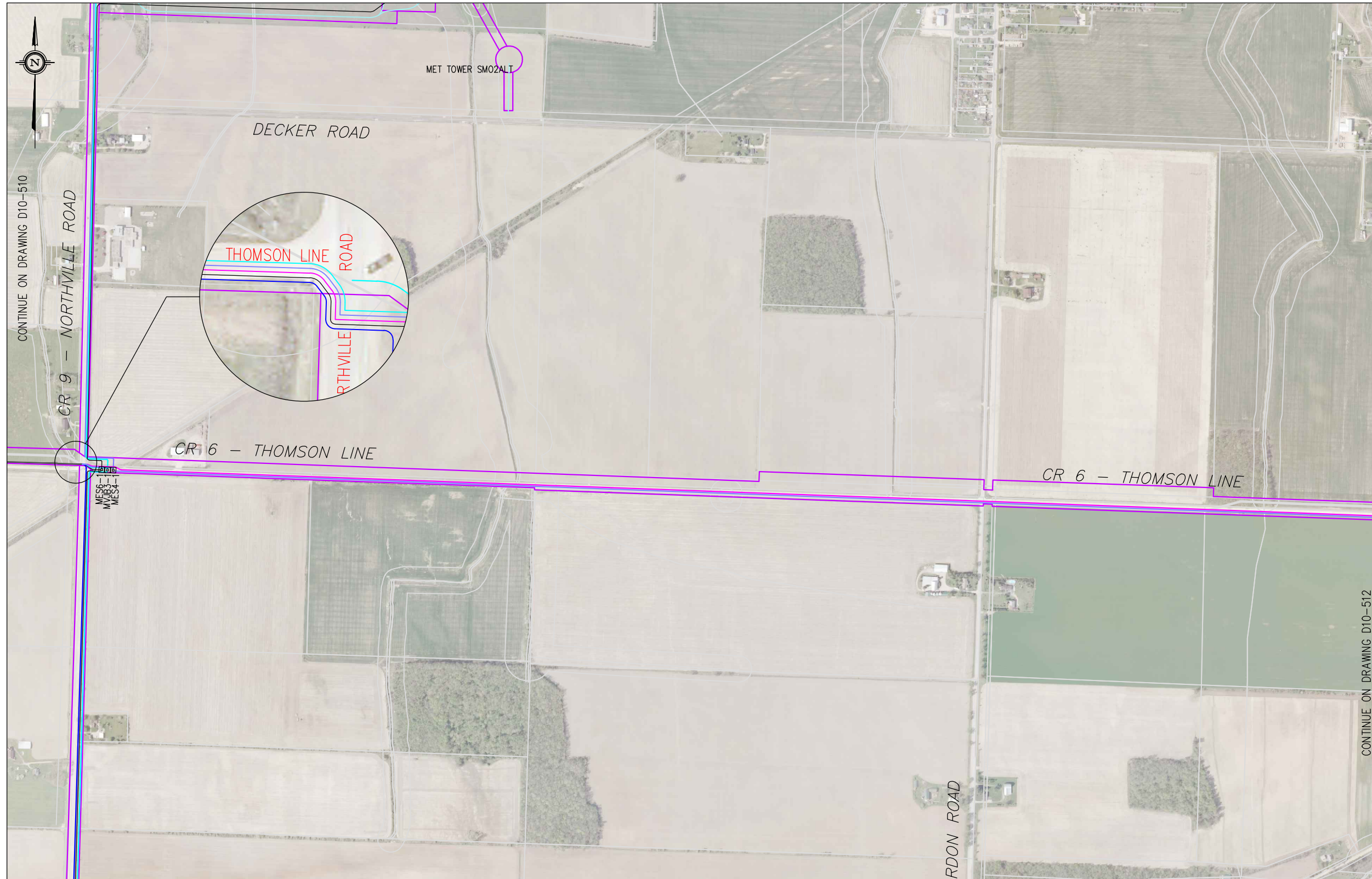
PRELIMINARY
NOT FOR
CONSTRUCTION

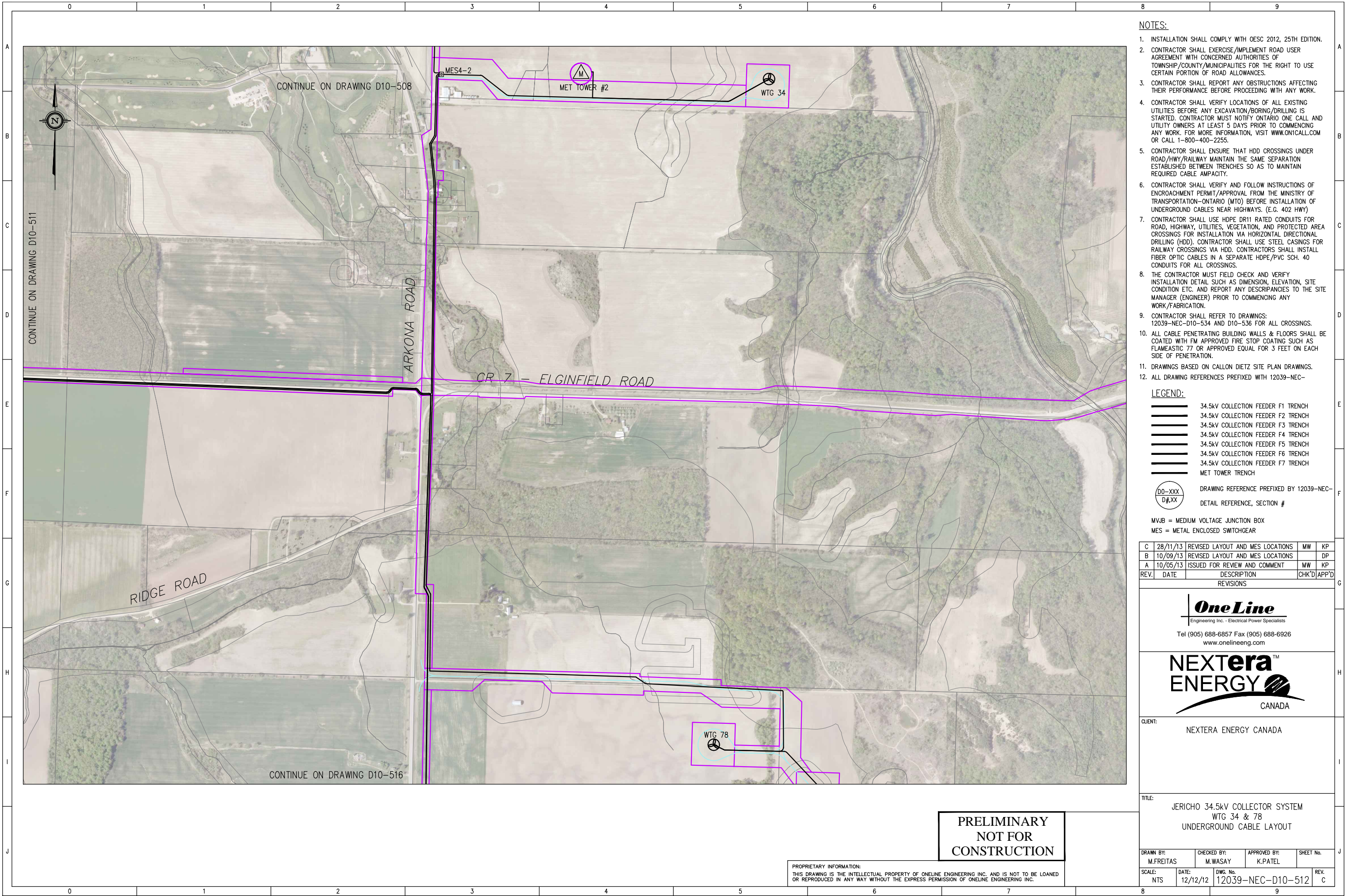
PROPRIETARY INFORMATION:
THIS DRAWING IS THE INTELLECTUAL PROPERTY OF ONELINE ENGINEERING INC. AND IS NOT TO BE LOANED OR REPRODUCED IN ANY WAY WITHOUT THE EXPRESS PERMISSION OF ONELINE ENGINEERING INC.

CONTINUE ON DRAWING D10-515

PROPRIETARY INFORMATION:
THIS DRAWING IS THE INTELLECTUAL PROPERTY OF ONELINE ENGINEERING INC. AND IS NOT TO BE LOANED OR REPRODUCED IN ANY WAY WITHOUT THE EXPRESS PERMISSION OF ONELINE ENGINEERING INC.

DRAWN BY: M.FREITAS		CHECKED BY: M.WASAY		APPROVED BY: K.PATEL		SHEET No.	
SCALE: NTS		DATE: 12/12/12		DWG. No. 12039-NEC-D10-511			REV. C





- NOTES:
1. INSTALLATION SHALL COMPLY WITH OESC 2012, 25TH EDITION.
 2. CONTRACTOR SHALL EXERCISE/IMPLEMENT ROAD USER AGREEMENT WITH CONCERNED AUTHORITIES OF TOWNSHIP/COUNTY/MUNICIPALITIES FOR THE RIGHT TO USE CERTAIN PORTION OF ROAD ALLOWANCES.
 3. CONTRACTOR SHALL REPORT ANY OBSTRUCTIONS AFFECTING THEIR PERFORMANCE BEFORE PROCEEDING WITH ANY WORK.
 4. CONTRACTOR SHALL VERIFY LOCATIONS OF ALL EXISTING UTILITIES BEFORE ANY EXCAVATION/BORING/DRILLING IS STARTED. CONTRACTOR MUST NOTIFY ONTARIO ONE CALL AND UTILITY OWNERS AT LEAST 5 DAYS PRIOR TO COMMENCING ANY WORK. FOR MORE INFORMATION, VISIT WWW.ON1CALL.COM OR CALL 1-800-400-2255.
 5. CONTRACTOR SHALL ENSURE THAT HDD CROSSINGS UNDER ROAD/HWY/RAILWAY MAINTAIN THE SAME SEPARATION ESTABLISHED BETWEEN TRENCHES SO AS TO MAINTAIN REQUIRED CABLE AMPACITY.
 6. CONTRACTOR SHALL VERIFY AND FOLLOW INSTRUCTIONS OF ENCROACHMENT PERMIT/APPROVAL FROM THE MINISTRY OF TRANSPORTATION-ONTARIO (MTO) BEFORE INSTALLATION OF UNDERGROUND CABLES NEAR HIGHWAYS. (E.G. 402 HWY)
 7. CONTRACTOR SHALL USE HDPE DR11 RATED CONDUITS FOR ROAD, HIGHWAY, UTILITIES, VEGETATION, AND PROTECTED AREA CROSSINGS FOR INSTALLATION VIA HORIZONTAL DIRECTIONAL DRILLING (HDD). CONTRACTOR SHALL USE STEEL CASINGS FOR RAILWAY CROSSINGS VIA HDD. CONTRACTORS SHALL INSTALL FIBER OPTIC CABLES IN A SEPARATE HDPE/PVC SCH. 40 CONDUITS FOR ALL CROSSINGS.
 8. THE CONTRACTOR MUST FIELD CHECK AND VERIFY INSTALLATION DETAIL SUCH AS DIMENSION, ELEVATION, SITE CONDITION ETC. AND REPORT ANY DESCRIPANCIES TO THE SITE MANAGER (ENGINEER) PRIOR TO COMMENCING ANY WORK/FABRICATION.
 9. CONTRACTOR SHALL REFER TO DRAWINGS: 12039-NEC-D10-534 AND D10-536 FOR ALL CROSSINGS.
 10. ALL CABLE PENETRATING BUILDING WALLS & FLOORS SHALL BE COATED WITH FM APPROVED FIRE STOP COATING SUCH AS FLAMEASTIC 77 OR APPROVED EQUAL FOR 3 FEET ON EACH SIDE OF PENETRATION.
 11. DRAWINGS BASED ON CALLON DIETZ SITE PLAN DRAWINGS.
 12. ALL DRAWING REFERENCES PREFIXED WITH 12039-NEC-

LEGEND:

	34.5kV COLLECTION FEEDER F1 TRENCH
	34.5kV COLLECTION FEEDER F2 TRENCH
	34.5kV COLLECTION FEEDER F3 TRENCH
	34.5kV COLLECTION FEEDER F4 TRENCH
	34.5kV COLLECTION FEEDER F5 TRENCH
	34.5kV COLLECTION FEEDER F6 TRENCH
	34.5kV COLLECTION FEEDER F7 TRENCH
	MET TOWER TRENCH

DRAWING REFERENCE PREFIXED BY 12039-NEC-
DETAIL REFERENCE, SECTION #

MVJB = MEDIUM VOLTAGE JUNCTION BOX
MES = METAL ENCLOSED SWITCHGEAR

C	28/11/13	REVISED LAYOUT AND MES LOCATIONS	MW	KP
B	10/09/13	REVISED LAYOUT AND MES LOCATIONS		DP
A	10/05/13	ISSUED FOR REVIEW AND COMMENT	MW	KP
REV.	DATE	DESCRIPTION	CHK'D	APP'D
REVISIONS				

Engineering Inc. - Electrical Power Specialists
Tel (905) 688-6857 Fax (905) 688-6926
www.onlineeng.com

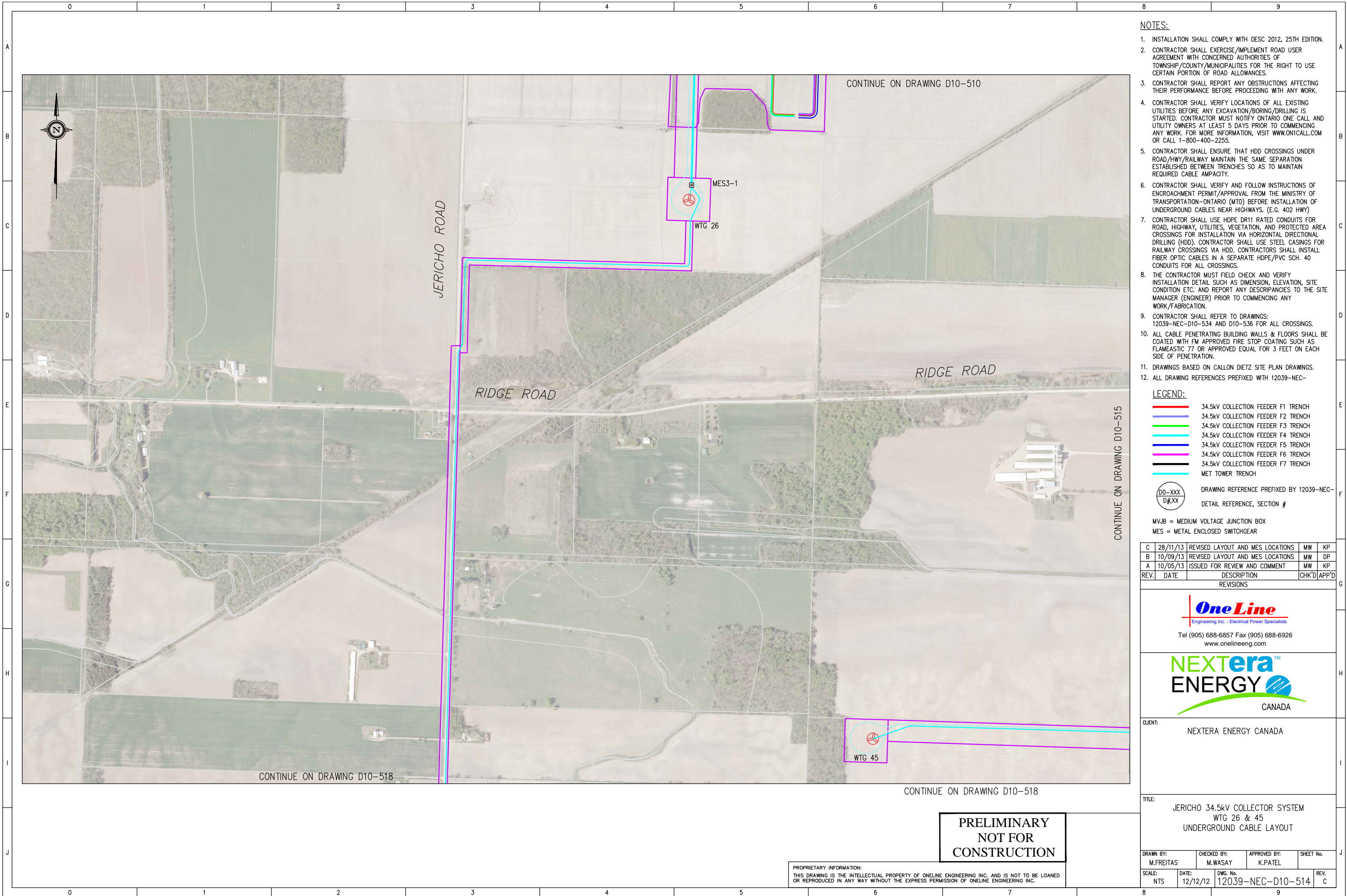
CLIENT: NEXTERA ENERGY CANADA

TITLE: JERICO 34.5kV COLLECTOR SYSTEM
WTG 34 & 78
UNDERGROUND CABLE LAYOUT

DRAWN BY: M.FREITAS	CHECKED BY: M.WASAY	APPROVED BY: K.PATEL	SHEET No.
SCALE: NTS	DATE: 12/12/12	DWS. No. 12039-NEC-D10-512	REV. C

PRELIMINARY
NOT FOR
CONSTRUCTION

PROPRIETARY INFORMATION:
THIS DRAWING IS THE INTELLECTUAL PROPERTY OF ONELINE ENGINEERING INC. AND IS NOT TO BE LOANED OR REPRODUCED IN ANY WAY WITHOUT THE EXPRESS PERMISSION OF ONELINE ENGINEERING INC.



- NOTES:
1. INSTALLATION SHALL COMPLY WITH OESC 2012, 25TH EDITION.
 2. CONTRACTOR SHALL EXERCISE/IMPLEMENT ROAD USER AGREEMENT WITH CONCERNED AUTHORITIES OF TOWNSHIP/COUNTY/MUNICIPALITIES FOR THE RIGHT TO USE CERTAIN PORTION OF ROAD ALLOWANCES.
 3. CONTRACTOR SHALL REPORT ANY OBSTRUCTIONS AFFECTING THEIR PERFORMANCE BEFORE PROCEEDING WITH ANY WORK.
 4. CONTRACTOR SHALL VERIFY LOCATIONS OF ALL EXISTING UTILITIES BEFORE ANY EXCAVATION/BORING/DRILLING IS STARTED. CONTRACTOR MUST NOTIFY ONTARIO ONE CALL AND UTILITY OWNERS AT LEAST 5 DAYS PRIOR TO COMMENCING ANY WORK. FOR MORE INFORMATION, VISIT WWW.ON1CALL.COM OR CALL 1-800-400-2255.
 5. CONTRACTOR SHALL ENSURE THAT HDD CROSSINGS UNDER ROAD/HWY/RAILWAY MAINTAIN THE SAME SEPARATION ESTABLISHED BETWEEN TRENCHES SO AS TO MAINTAIN REQUIRED CABLE AMPACITY.
 6. CONTRACTOR SHALL VERIFY AND FOLLOW INSTRUCTIONS OF ENCROACHMENT PERMIT/APPROVAL FROM THE MINISTRY OF TRANSPORTATION-ONTARIO (MTO) BEFORE INSTALLATION OF UNDERGROUND CABLES NEAR HIGHWAYS. (E.G. 402 HWY)
 7. CONTRACTOR SHALL USE HDPE DR11 RATED CONDUITS FOR ROAD, HIGHWAY, UTILITIES, VEGETATION, AND PROTECTED AREA CROSSINGS FOR INSTALLATION VIA HORIZONTAL DIRECTIONAL DRILLING (HDD). CONTRACTOR SHALL USE STEEL CASINGS FOR RAILWAY CROSSINGS VIA HDD. CONTRACTORS SHALL INSTALL FIBER OPTIC CABLES IN A SEPARATE HDPE/PVC SCH. 40 CONDUITS FOR ALL CROSSINGS.
 8. THE CONTRACTOR MUST FIELD CHECK AND VERIFY INSTALLATION DETAIL SUCH AS DIMENSION, ELEVATION, SITE CONDITION ETC. AND REPORT ANY DESCRIPANCIES TO THE SITE MANAGER (ENGINEER) PRIOR TO COMMENCING ANY WORK/FABRICATION.
 9. CONTRACTOR SHALL REFER TO DRAWINGS: 12039-NEC-D10-534 AND D10-536 FOR ALL CROSSINGS.
 10. ALL CABLE PENETRATING BUILDING WALLS & FLOORS SHALL BE COATED WITH FM APPROVED FIRE STOP COATING SUCH AS FLAMEASTIC 77 OR APPROVED EQUAL FOR 3 FEET ON EACH SIDE OF PENETRATION.
 11. DRAWINGS BASED ON CALLON DIETZ SITE PLAN DRAWINGS.
 12. ALL DRAWING REFERENCES PREFIXED WITH 12039-NEC-

LEGEND:

	34.5kV COLLECTION FEEDER F1 TRENCH
	34.5kV COLLECTION FEEDER F2 TRENCH
	34.5kV COLLECTION FEEDER F3 TRENCH
	34.5kV COLLECTION FEEDER F4 TRENCH
	34.5kV COLLECTION FEEDER F5 TRENCH
	34.5kV COLLECTION FEEDER F6 TRENCH
	34.5kV COLLECTION FEEDER F7 TRENCH
	MET TOWER TRENCH

DRAWING REFERENCE PREFIXED BY 12039-NEC-
DETAIL REFERENCE, SECTION #

MVJB = MEDIUM VOLTAGE JUNCTION BOX
MES = METAL ENCLOSED SWITCHGEAR

C	28/11/13	REVISED LAYOUT AND MES LOCATIONS	MW	KP
B	10/09/13	REVISED LAYOUT AND MES LOCATIONS	MW	DP
A	10/05/13	ISSUED FOR REVIEW AND COMMENT	MW	KP
REV.	DATE	DESCRIPTION	CHK'D	APP'D
REVISIONS				

Engineering Inc. - Electrical Power Specialists
Tel (905) 688-6857 Fax (905) 688-6926
www.onlineeng.com

NEXTERA ENERGY CANADA

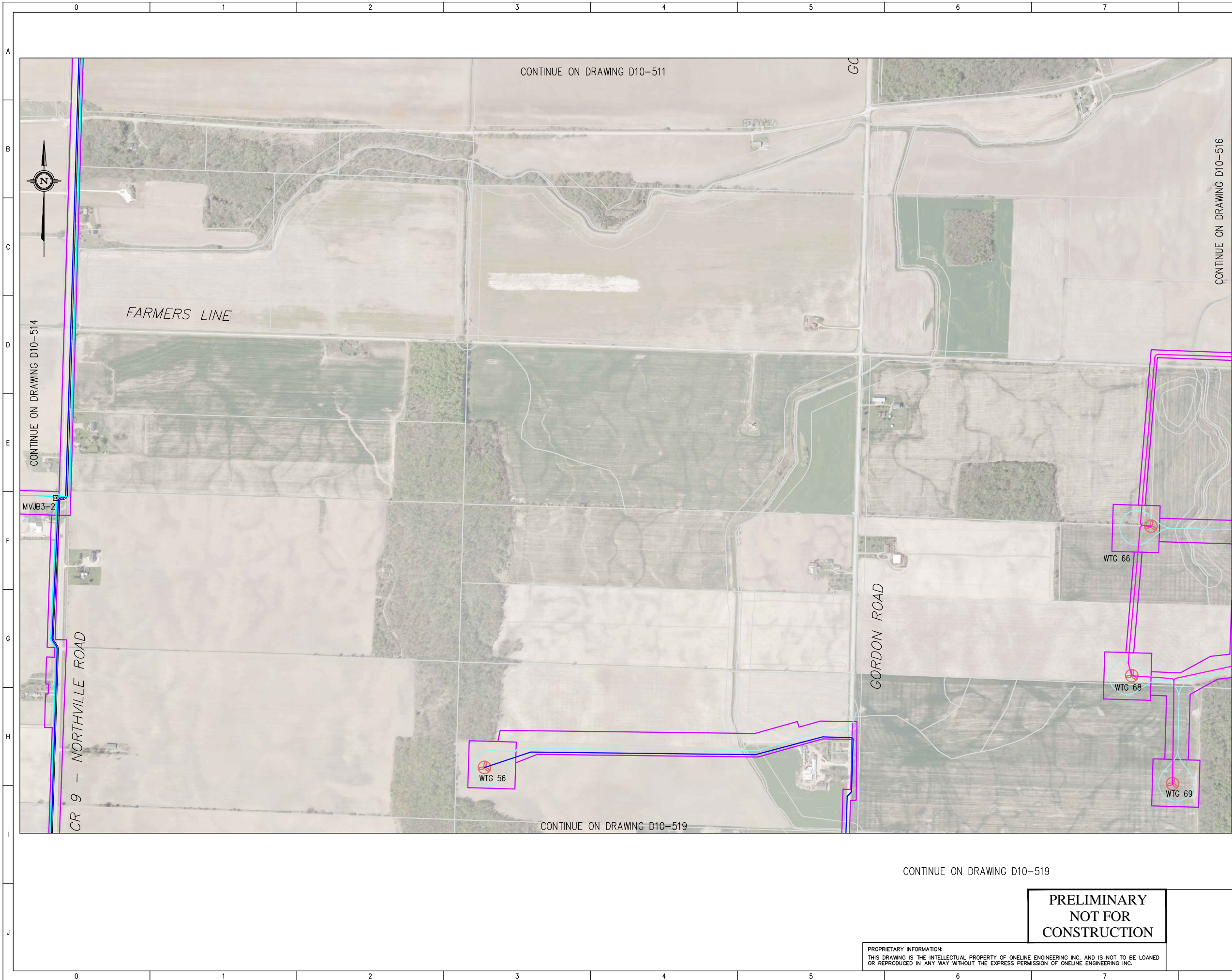
CLIENT: NEXTERA ENERGY CANADA

TITLE: JERICH0 34.5kV COLLECTOR SYSTEM
WTG 26 & 45
UNDERGROUND CABLE LAYOUT

DRAWN BY: M.FREITAS	CHECKED BY: M.WASAY	APPROVED BY: K.PATEL	SHEET No.
SCALE: NTS	DATE: 12/12/12	DWS. No. 12039-NEC-D10-514	REV. C

PROPRIETARY INFORMATION:
THIS DRAWING IS THE INTELLECTUAL PROPERTY OF ONELINE ENGINEERING INC. AND IS NOT TO BE LOANED OR REPRODUCED IN ANY WAY WITHOUT THE EXPRESS PERMISSION OF ONELINE ENGINEERING INC.

PRELIMINARY
NOT FOR
CONSTRUCTION



- NOTES:
1. INSTALLATION SHALL COMPLY WITH OESC 2012, 25TH EDITION.
 2. CONTRACTOR SHALL EXERCISE/IMPLEMENT ROAD USER AGREEMENT WITH CONCERNED AUTHORITIES OF TOWNSHIP/COUNTY/MUNICIPALITIES FOR THE RIGHT TO USE CERTAIN PORTION OF ROAD ALLOWANCES.
 3. CONTRACTOR SHALL REPORT ANY OBSTRUCTIONS AFFECTING THEIR PERFORMANCE BEFORE PROCEEDING WITH ANY WORK.
 4. CONTRACTOR SHALL VERIFY LOCATIONS OF ALL EXISTING UTILITIES BEFORE ANY EXCAVATION/BORING/DRILLING IS STARTED. CONTRACTOR MUST NOTIFY ONTARIO ONE CALL AND UTILITY OWNERS AT LEAST 5 DAYS PRIOR TO COMMENCING ANY WORK. FOR MORE INFORMATION, VISIT WWW.ON1CALL.COM OR CALL 1-800-400-2255.
 5. CONTRACTOR SHALL ENSURE THAT HDD CROSSINGS UNDER ROAD/HWY/RAILWAY MAINTAIN THE SAME SEPARATION ESTABLISHED BETWEEN TRENCHES SO AS TO MAINTAIN REQUIRED CABLE AMPACITY.
 6. CONTRACTOR SHALL VERIFY AND FOLLOW INSTRUCTIONS OF ENCROACHMENT PERMIT/APPROVAL FROM THE MINISTRY OF TRANSPORTATION-ONTARIO (MTO) BEFORE INSTALLATION OF UNDERGROUND CABLES NEAR HIGHWAYS. (E.G. 402 HWY)
 7. CONTRACTOR SHALL USE HDPE DR11 RATED CONDUITS FOR ROAD, HIGHWAY, UTILITIES, VEGETATION, AND PROTECTED AREA CROSSINGS FOR INSTALLATION VIA HORIZONTAL DIRECTIONAL DRILLING (HDD). CONTRACTOR SHALL USE STEEL CASINGS FOR RAILWAY CROSSINGS VIA HDD. CONTRACTORS SHALL INSTALL FIBER OPTIC CABLES IN A SEPARATE HDPE/PVC SCH. 40 CONDUITS FOR ALL CROSSINGS.
 8. THE CONTRACTOR MUST FIELD CHECK AND VERIFY INSTALLATION DETAIL SUCH AS DIMENSION, ELEVATION, SITE CONDITION ETC. AND REPORT ANY DESCRIPANCIES TO THE SITE MANAGER (ENGINEER) PRIOR TO COMMENCING ANY WORK/FABRICATION.
 9. CONTRACTOR SHALL REFER TO DRAWINGS: 12039-NEC-D10-534 AND D10-536 FOR ALL CROSSINGS.
 10. ALL CABLE PENETRATING BUILDING WALLS & FLOORS SHALL BE COATED WITH FM APPROVED FIRE STOP COATING SUCH AS FLAMEASTIC 77 OR APPROVED EQUAL FOR 3 FEET ON EACH SIDE OF PENETRATION.
 11. DRAWINGS BASED ON CALLON DIETZ SITE PLAN DRAWINGS.
 12. ALL DRAWING REFERENCES PREFIXED WITH 12039-NEC-

LEGEND:

	34.5kV COLLECTION FEEDER F1 TRENCH
	34.5kV COLLECTION FEEDER F2 TRENCH
	34.5kV COLLECTION FEEDER F3 TRENCH
	34.5kV COLLECTION FEEDER F4 TRENCH
	34.5kV COLLECTION FEEDER F5 TRENCH
	34.5kV COLLECTION FEEDER F6 TRENCH
	34.5kV COLLECTION FEEDER F7 TRENCH
	MET TOWER TRENCH

DRAWING REFERENCE PREFIXED BY 12039-NEC-
DETAIL REFERENCE, SECTION #

MVJB = MEDIUM VOLTAGE JUNCTION BOX
MES = METAL ENCLOSED SWITCHGEAR

C	28/11/13	REVISED LAYOUT AND MES LOCATIONS	MW	KP
B	10/09/13	REVISED LAYOUT AND MES LOCATIONS		DP
A	10/05/13	ISSUED FOR REVIEW AND COMMENT	MW	KP
REV.	DATE	DESCRIPTION	CHK'D	APP'D
REVISIONS				

Engineering Inc. - Electrical Power Specialists
Tel (905) 688-6857 Fax (905) 688-6926
www.onlineeng.com

NEXTERA ENERGY CANADA

CLIENT: NEXTERA ENERGY CANADA

TITLE: JERICO 34.5kV COLLECTOR SYSTEM
WTG 56,66,68 &69
UNDERGROUND CABLE LAYOUT

DRAWN BY: M.FREITAS	CHECKED BY: M.WASAY	APPROVED BY: K.PATEL	SHEET No.
SCALE: NTS	DATE: 12/12/12	DWG. No. 12039-NEC-D10-515	REV. C

PROPRIETARY INFORMATION:
THIS DRAWING IS THE INTELLECTUAL PROPERTY OF ONELINE ENGINEERING INC. AND IS NOT TO BE LOANED OR REPRODUCED IN ANY WAY WITHOUT THE EXPRESS PERMISSION OF ONELINE ENGINEERING INC.

PRELIMINARY
NOT FOR
CONSTRUCTION