



500 Consumers Road
North York, Ontario M2J 1P8
PO Box 650
Scarborough ON M1K 5E3

Stephanie Allman
Regulatory Coordinator
Telephone: (416) 495-5499
Fax: (416) 495-6072
Email: EGDRRegulatoryProceedings@enbridge.com

May 1, 2014

VIA COURIER AND EMAIL

Ms. Kirsten Walli
Board Secretary
Ontario Energy Board
2300 Yonge Street, Suite 2700
Toronto, ON M4P 1E4

Re: Enbridge Gas Distribution Inc. ("Enbridge")
EB-2010-0241 - Torbram Rd Pipeline Relocation (CNR Weston)
Conditions of Approval - Final Monitoring Report

In the Ontario Energy Board's Decision issued on January 20, 2011 the Conditions of Approval required Enbridge to file the Final Monitoring Report for the project 15 months after the in-service date. The final in-service date for the Torbram Rd. Pipeline Relocation project was September 6, 2012 and required Enbridge to file the Final Monitoring Report by December 2013. Since the final report date occurred in the winter, it has been postponed until May 2014.

Enclosed please find the Final Monitoring Report for the Torbram Rd. Relocation project.

Any future developments will be communicated to the Board.

If you have any questions, please contact the undersigned.

Yours truly,

(ORIGINAL SIGNED)

Stephanie Allman
Regulatory Coordinator

cc: Zora Crnojacki, OPCC Chair (via email)
Pascale Duguay, Manger, Facilities Applications, Ontario Energy Board (via email)

Table of Contents

Description

1.0 Introduction	Page 1
2.0 Project Description	Page 2
3.0 Environmental Inspection	Page 3
4.0 Construction Effects and Mitigation Measures	Page 3
5.0 Residual Issues	Page 5
6.0 Summary	Page 6

Appendices

APPENDIX A: PIPELINE ROUTE MAP	Page 7
Figure 1: Map of Torbram Road Pipeline Relocation	Page 8
APPENDIX B: PHOTO LOG (April 21, 2014)	Page 9

**ENBRIDGE GAS DISTRIBUTION INC.
POST-CONSTRUCTION
ENVIRONMENTAL MONITORING REPORT NO.2
TORBRAM ROAD PIPELINE RELOCATION (CNR WESTON)
EB-2010-0241**

Prepared by
Enbridge Gas Distribution Inc.
April 23, 2014

1.0 Introduction

In January of 2011 the Ontario Energy Board (“OEB”) under docket number EB-2010-0241 granted Enbridge Gas Distribution Inc. (“Enbridge”) Leave to Construct an nominal pipe size (NPS) 12 (12-inch outer diameter) natural gas pipeline to accommodate the grade separation of a railway crossing and Torbram Road in Mississauga, Ontario. This work, which is the subject of the application, is part of a wider project Enbridge is undergoing to accommodate the grade separation. This report only covers the work which is the subject of this application.

On June 8 2012¹, Enbridge filed a letter to inform the OEB that construction would commence on June 25, 2012. On November 9, 2011, Enbridge filed a letter to inform the OEB that construction of the pipeline was delayed pending securing of lands to permit Enbridge to begin construction. Construction of the pipeline began on June 25, 2012 and was completed on September 28, 2012. This section of pipeline was commissioned on September 6, 2012.

On April 29 2013, Enbridge filed the Interim Monitoring Report. This report is the Final Monitoring Report for this project.

Prior and subsequent to obtaining approval, Enbridge conducted the following study to select a pipeline route, identify potential impacts resulting from construction, and prepare mitigative measures to minimize environmental and socio-economic impacts.

<u>Report Title</u>	<u>Conducted by:</u>	<u>Date</u>
Proposed Relocation for Torbram Road Widening and Railway Underpass Environmental Screening Report	Enbridge Gas Distribution Inc.	July 2010

This report has been prepared in accordance with OEB EB-2010-0241 Board Staff Proposed Conditions of Approval as described below:

- 3.1 Both during and after construction, Enbridge shall monitor the impacts of construction, and shall file four copies of both an interim and a final monitoring report with the Board. The interim monitoring report shall be filed within six months of the in-service date, and the final monitoring report shall be filed within fifteen months of the in-service date. Enbridge shall attach a log of all complaints that have been received to the interim and final monitoring reports. The log shall record the times of all complaints received, the substance of each complaint, the actions taken in response, and the reasons underlying each action.
- 3.2 The interim monitoring report shall confirm Enbridge adherence to Condition 1.1 and shall include a description of the impacts noted during

¹ Letter was misdated May 16 2011 but was actually filed with the OEB on June 8 2012.

construction and the actions taken or to be taken to prevent or mitigate the long-term effects of the impacts of construction. This report shall describe any outstanding concerns identified during construction.

- 3.3 The final monitoring report shall describe the condition of any rehabilitated land and the effectiveness of the mitigation measures undertaken. The results of the monitoring programs and analysis shall be included and any recommendations made as appropriate. Any deficiency in compliance with any of the Conditions of Approval shall be explained.

This report is limited to items that have been identified prior to April 21, 2014. Inspection of the disturbed and impacted areas was limited to visual observation from publicly accessible Rights of Way since they are located on private property behind closed gates. This report will summarize that all disturbed or impacted areas due to construction activities are restored to their original state or better and that Enbridge does not foresee any future issues related to this construction.

NOTE:

2.0 Project Description

The pipeline project was constructed to accommodate the grade separation of a railway crossing and Torbram Road in Mississauga, Ontario

The relocation of the pipeline originates at an existing Enbridge NPS 12 (inch) pipeline located approximately 110 meters (m) west of Torbram Road, approximately 50 m south of CNR Weston and proceed east for approximately 270 m.

It terminates at an existing Enbridge NPS 12 pipeline south of CNR Weston. Appendix A shows the constructed pipeline within a regional context.

3.0 Environmental Inspection

In order to ensure that environmental commitments were honoured and that the best industry practices were used a full time Engineering Project Manager was onsite. In general, the duties of the Engineering Project Manager included the following items:

- provide advice to the Project Manager, Construction Inspectors, and all construction personnel regarding compliance with environmental legislation, regulations and industry standards;
- provide advice regarding adherence to environmental specifications and commitments made in the previously mentioned documents and to regulatory agencies, including the OEB;

- provide advice on erosion protection measures to be taken in sensitive locations in vicinity of watercourse crossing;
- act as a liaison with environmental regulators, government agencies and interest groups;
- provide immediate advice regarding spill prevention and contingency; and,
- ensure appropriate waste disposal of any hazardous construction wastes.

An Enbridge Environment, Health and Safety (EHS) Specialist also provided assistance as required to the Engineering Project Manager.

4.0 Construction Effects and Mitigation Measures

Construction effects and mitigation measures which were implemented to minimize the potential effects from the construction of the Torbram Road Pipeline Relocation (CNR Weston) pipeline are summarized in Table 1. All activities were conducted in adherence to the contract documentation and Enbridge Construction Policies and Procedures.

Table 1.
Construction Effects and Mitigation Measures

Activity	Duration	Potential Effect	Mitigation Measures
Topsoil Handling	Throughout Construction	Disruption of surface and subsurface soils. Soil mixing may result in loss of productivity.	Care was taken to minimize mixing of subsoils. Topsoil was replaced on surface during restoration.
Watercourse Crossing	Throughout Construction	Disruption of watercourse through siltation and sedimentation. Erosion of channel banks and loss of vegetation cover. Contamination of surface water. Interruption of subsurface drainage along pipeline trench.	Crossing of a tributary to Mimico Creek was completed by directional drill. Watercourse crossing permits were obtained from the Toronto and Region Conservation Authority. Sediment fencing installed to prevent sedimentation and siltation.
Noise	Throughout Construction	Disturbances to sensitive receptors (i.e. residents, seniors' homes, schools).	Construction equipment conformed to guidelines for sound and emission levels.
Trenching and Excavation	Throughout Construction	Open trenches present a hazard to vehicular and pedestrian traffic. Restricts access. Sedimentation into roadside ditches.	Protective barricades (i.e., snow fence, sediment fence, jersey barriers, and straw bales) were erected around trenches and excavations during construction activities.
Utility Crossings	Throughout Construction	Minimum distance separation from buried or above-ground services may not provide sufficient room within a road right-of-way (R.O.W.) for the installation of a gas pipeline; damage to utilities may inconvenience landowners.	In accordance with Enbridge Policies and Procedures, locates were obtained prior to any excavation work. Warning signs posted in vicinity of overhead power lines.

Table 1.
Construction Effects and Mitigation Measures

Activity	Duration	Potential Effect	Mitigation Measures
Spills	Throughout Construction	Contamination of air, soil, surface water or ground water. Inconvenience to landowners and public	As required, contractor had spill containment kits at the project site.
Hydrostatic Testing	August 13, 2012	Disruption of water supply to landowners or emergency services. Uncontrolled discharge of water could cause erosion, sedimentation and contamination of surface water supplies.	Potable water was brought in by water truck; and discharge water to the sanitary sewer was obtained from the Region of Peel. No significant adverse environmental effects resulted from the hydrostatic testing and dewatering procedures.
Pipe Energizing	September 6, 2012	Inconvenience and/or negative health effects to nearby landowners and the public.	Energizing was completed in accordance with Enbridge Policies and Procedures.
Clean-Up	Throughout Construction	Restores the pipeline easement to pre-construction conditions.	Clean up activities were conducted in accordance with the Enbridge Construction and Maintenance Manual.

5.0 Residual Issues

Overall, construction activities were carried out with a high level of respect for the environment.

Since portions of the pipeline Right-Of-Way (R.O.W) are located within the Torbram Road road allowance and the CNR Rail R.O.W., there may, in the future, be some degradation caused by littering that is not a result of construction.

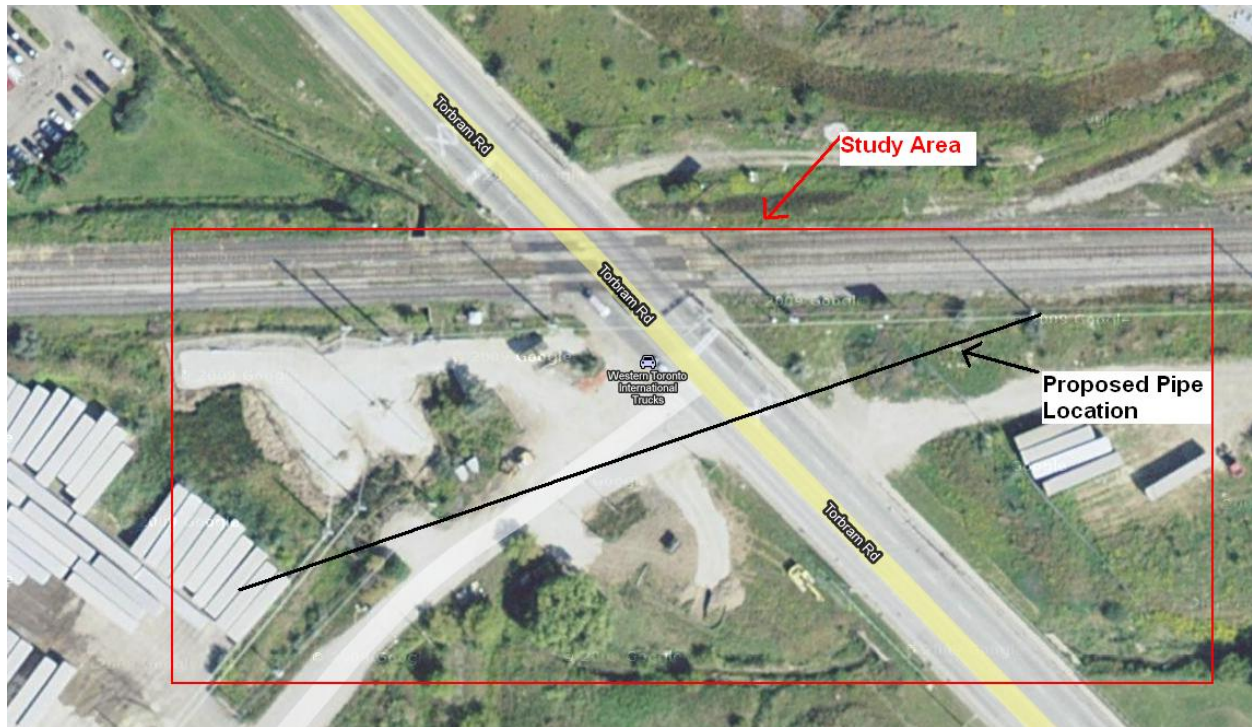
There are no unresolved issues that remain at the time of completion of this report (April 2014) for the Torbram Road Relocation (CNR Weston) pipeline project

6.0 Summary

This Final Post-Construction Environmental Monitoring Report has been prepared in accordance with the OEB Decision Docket No.EB-2010-0241. It documents construction and clean-up activities conducted in the winter of 2012. In general, measures implemented during construction and clean-up have been successful.

APPENDIX A
PIPELINE ROUTE MAP

Figure 1: Map of Torbram Road Pipeline Relocation



APPENDIX B

PHOTO LOG
(April 21, 2014)



Photo 1 – CNR Weston; east of Torbram Road



Photo 2 – CNR Weston; east of Torbram Road



Photo 3 – CNR Weston; west of Torbram Road