

# Smart Meter Time of Use EnWin Utilities Ltd for EB-2012-0405

For the Period to: 02-May-14

## RPP Eligible Consumers:

Description	Residential	GS < 50kW Class	Total
Total Number of RPP-eligible consumers	77,808	6,956	84,764
Number of smart meters installed in the period	32	9	41
Number of smart meters registered with the MDM/R in the period	32	9	41
Number of RPP consumers being charged TOU prices added in the period	73,067	6,455	79,522
Total cumulative number of smart meters installed in the service area at the end of the period	78,365	7,583	85,948
Total cumulative number of smart meters registered with the MDM/R at the end of the period	78,365	7,583	85,948
Total cumulative number of consumers being charged TOU prices at the end of the period	73,067	6,455	79,522

## Progress Report on SME Milestones

Activity	Original Scheduled Completion Date	Status	Expected Completion Date	Actual Completion Date
1. AMCC Internal Testing		Complete	July-30-10	July-30-10

Activity	Original Scheduled Completion Date	Status	Expected Completion Date	Actual Completion Date
2. CIS Internal Testing	September-04-13	Complete	December-13-13	December-13-13

Activity	Yes or No?	Expected Completion Date	Actual Completion Date
3. MDM/R Registration Application submitted	Yes	January-01-10	January-01-10

Activity	Yes or No?	Status, if Yes	Expected Completion Date	Actual Completion Date
4. Enrolment Wave requested and confirmed (Note: the SME will either confirm the requested start date or suggest an alternate)	Yes	Complete	March-25-13	January-23-13

Activity	Original Scheduled Completion Date	Status	Expected Completion Date	Actual Completion Date
5. Unit Testing	September-12-13	Complete	September-12-13	September-27-13

Activity	Original Scheduled Completion Date	Status	Expected Completion Date	Actual Completion Date
6. Submitted a completed Self Certification for Enrolment Testing SME_FORM_0007 (Note: This must be submitted at least one week prior to the confirmed enrolment wave start date)	August-26-13	Complete	October-30-13	October-22-13

Activity	Original Scheduled Completion Date	Status	Expected Completion Date	Actual Completion Date
7. System Integration Testing (SIT)	September-18-13	Complete	November-01-13	November-01-13

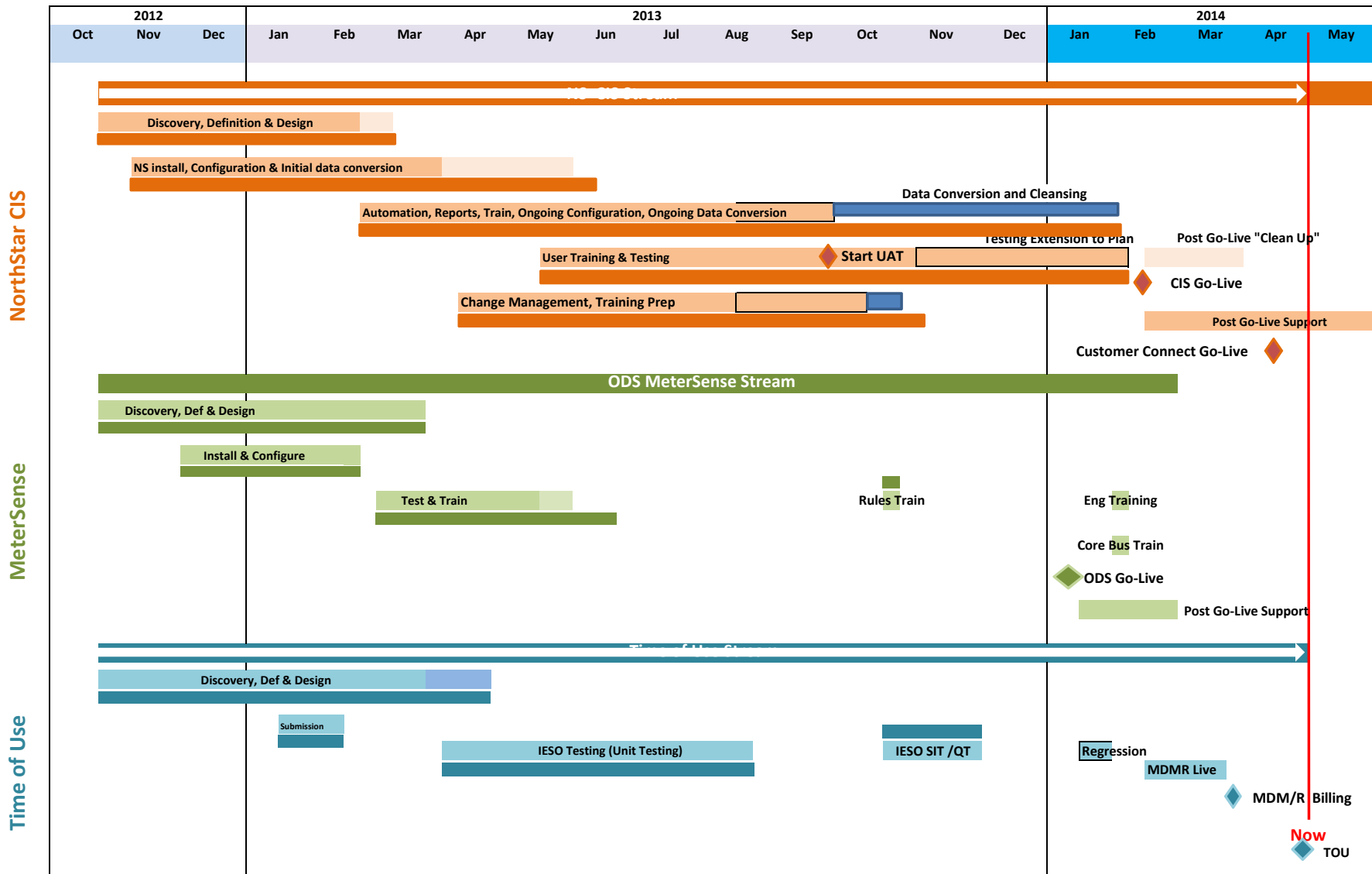
Activity	Original Scheduled Completion Date	Status	Expected Completion Date	Actual Completion Date
8. Qualification Testing (QT)	October-17-13	Complete	November-29-13	November-29-13

Activity	Original Scheduled Completion Date	Status	Expected Completion Date	Actual Completion Date
9. Self Certification - Cutover	November-28-13	Complete	March-17-14	March-14-14

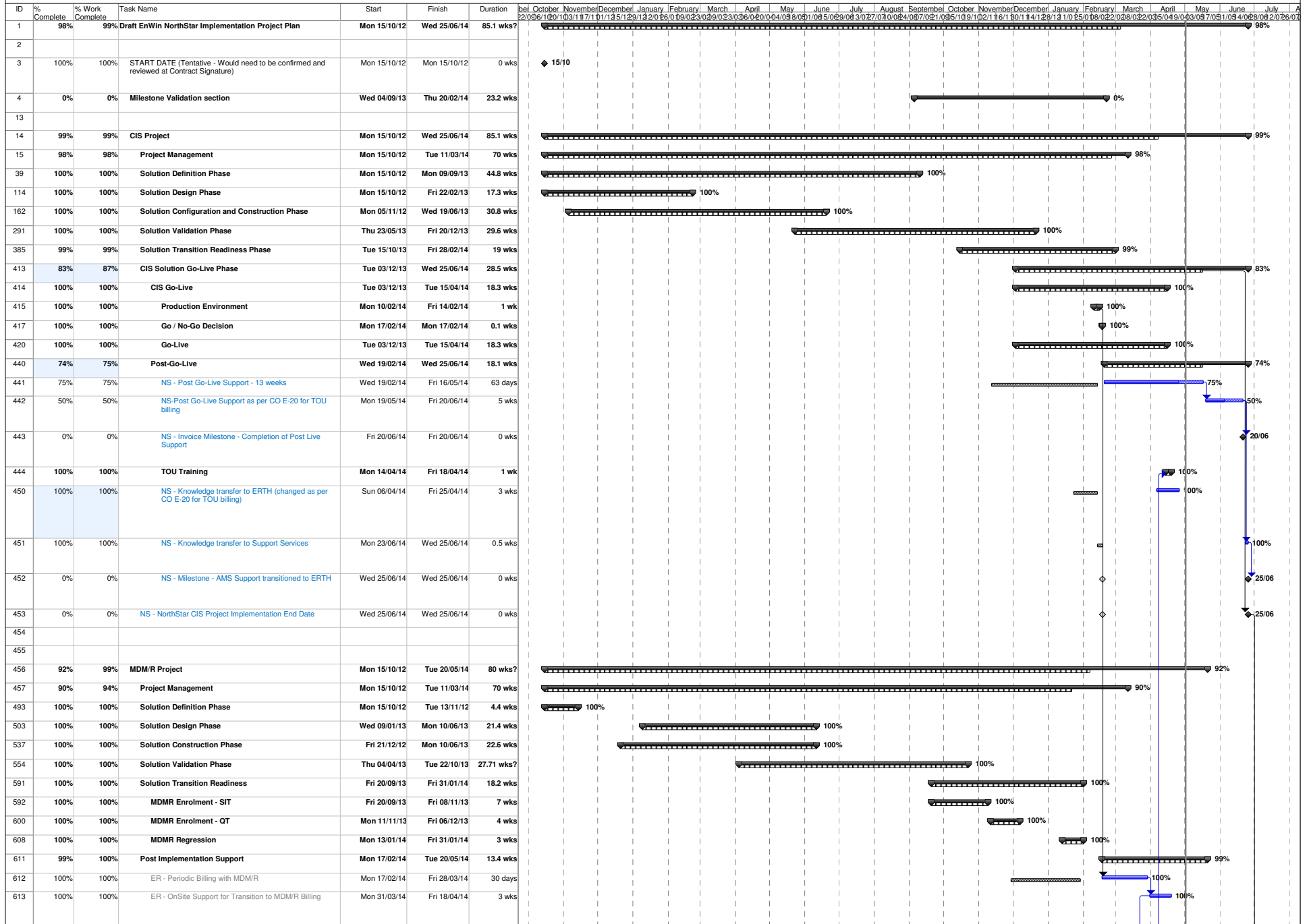
Activity	Original Scheduled Completion Date	Status	Expected Completion Date	Actual Completion Date
10. Transition to Production Operations	March-26-14	Behind Schedule	April-28-14	May-02-14

## Additional Comments and Information

Enwin has completed the move to Time-of-Use billing as of May 2, 2014 for all Residential and GS < 50 customers.



EnWin EnStar Project plan - May 1, 2014



EnWin EnStar Project plan - May 1, 2014

