

500 Consumers Road  
North York, Ontario M2J 1P8  
PO Box 650  
Scarborough ON M1K 5E3

**Stephanie Allman**  
**Regulatory Coordinator**  
Telephone: (416) 495-5499  
Fax: (416) 495-6072  
Email: EGDRRegulatoryProceedings@enbridge.com



July 15, 2014

**VIA COURIER AND EMAIL**

Ms. Kirsten Walli  
Board Secretary  
Ontario Energy Board  
2300 Yonge Street, Suite 2700  
Toronto, ON M4P 1E4

**Re: Enbridge Gas Distribution Inc. ("Enbridge")**  
**EB-2012-0060 Kimball-Colinville - Observation Wells**  
**Conditions of Approval - Final Monitoring Reports**

In the Ontario Energy Board's Decision issued on June 28, 2012, the Conditions of Approval required Enbridge to file the Final Monitoring Reports for the project 15 months after the in-service date. The final in-service date for TKC #64 was Nov 16, 2012, TKC #65 was Oct 19, 2012, and TKC #66 was April 17, 2013, and requires Enbridge to file the Final Monitoring Report by July, 2014. TKC# 63 is now subject to a different Application (EB-2013-0289).

Enclosed please find the Final Monitoring Reports for this project.

Any future developments will be communicated to the Board.

If you have any questions, please contact the undersigned.

Yours truly,

(Original Signed)

Stephanie Allman  
Regulatory Coordinator

cc: Zora Crnojacki, OPCC Chair  
Pascale Duguay, Manager, Facilities Applications, Ontario Energy Board  
(via courier and email)

**ENBRIDGE GAS DISTRIBUTION INC.  
POST-CONSTRUCTION  
ENVIRONMENTAL MONITORING REPORT NO.2**

**TECUMSEH GAS STORAGE WELL TKC#64  
EB-2012-0060**

Prepared by  
Enbridge Gas Distribution Inc.  
July 9, 2014

## Table of Contents

### Description

1.0 Introduction	Page 1
2.0 Project Description	Page 2
3.0 Environmental Inspection	Page 2
4.0 Construction Effects and Mitigation Measures	Page 3
5.0 Residual Issues	Page 4
6.0 Landowner Comments	Page 4
7.0 Summary	Page 5

## Appendices

### APPENDIX A: STORAGE WELL LOCATION MAP

Figure 1: Map of Location of Gas Storage Well TKC#64	Page 7
--	--------

### APPENDIX B: PHOTOLOG

### APPENDIX C: COMMENT LOG

## 1.0 Introduction

On June 28, 2012 the Ontario Energy Board (“Board”) under docket number EB-2012-0060 granted Enbridge Gas Distribution Inc. (“Enbridge”) permission to drill and operate an observation well (TKC#64, Moore 1-20-VI) in the Kimball-Colinville Storage Pool. Prior to obtaining approval, Enbridge conducted the following studies to identify potential impacts resulting from construction, and prepare mitigative measures to minimize environmental and socio-economic impacts.

<b><u>Report Title</u></b>	<b><u>Conducted by:</u></b>	<b><u>Date</u></b>
Environmental Report: Tecumseh Storage Enhancement Project – Storage Infill Drilling	Stantec Consulting Limited	March 2008
Environmental Screening Report – Proposed Observation Well TKC #64 – Environmental Screening Report ( <i>this report was based on the Stantec report above</i> )	Enbridge Gas Distribution Inc.	January 2012
Baseline Residential/Private Well Monitoring Program, Natural Gas Storage Pools, Lambton County	Stantec Consulting Ltd.	March 6, 2012

Construction of this well began on July 30, 2012 and was completed on May 11, 2013. The storage well was commissioned on November 16, 2012.

This report has been prepared in accordance with OEB EB-2012-0060 Board Staff Proposed Conditions of Approval as described below:

- 3.1 Both during and after construction, Enbridge shall monitor the impacts of construction, and shall file four copies of both an interim and a final monitoring report with the Board and the Ministry of Natural Resources. The interim monitoring report shall be filed within six months of the in-service date, and the final monitoring report shall be filed within fifteen months of the in-service date. Enbridge shall attach a log of all comments and complaints that have been received to the interim and final monitoring reports. The log shall record the times of all comments and complaints received, the substance of each comment and complaint, the actions taken in response, and the reasons underlying such actions.

- 3.2 The interim monitoring report shall confirm Enbridge's adherence to Condition 1.1 and shall include a description of the impacts noted during construction and the actions taken or to be taken to prevent or mitigate the long-term effects of the impacts of construction. This report shall describe any outstanding concerns identified during construction.
- 3.3 The final monitoring report shall describe the condition of the rehabilitated land and the effectiveness of the mitigation measures undertaken. The results of the monitoring programs and analysis shall be included and recommendations made as appropriate. Any deficiency in compliance with any of the Conditions of Approval shall be explained.

This report is limited to items that have been identified prior to July 8, 2014. Prior to construction there were many activities conducted related to this pipeline project, including an environmental screening and water well monitoring investigation. The environmental mitigation measures are discussed here and there are no water well issues. This report will concentrate on construction impacts and will summarize that all disturbed or impacted areas due to construction activities have been revisited to ensure they are restored to their original state or better and that Enbridge does not foresee any future issues related to this construction.

## **2.0 Project Description**

TKC#64 observation well is one of three observation wells drilled in the Kimball-Colinville Storage Pool. The wells were designed to help Enbridge monitor the gas content and pressure in the underground storage area. . The Kimball-Colinville Storage Pool is located primarily under Lots 17, 18 and 19 and Concessions V, VI, VII and VIII in St. Clair Township. TKC#64 is located approximately 151 m south of Moore Line, and 900 m west of Tecumseh Road in St. Clair Township in the County of Lambton. Appendix A shows the storage well within a regional context.

## **3.0 Environmental Inspection**

In order to ensure that environmental commitments were honoured and that the best industry practices were used, a full time inspector was onsite. In general, the duties of the inspector included the following items:

- provide advice to the Project Manager and all construction personnel regarding compliance with environmental legislation, regulations and industry standards;
- provide advice regarding adherence to environmental specifications and commitments made in the previously mentioned documents and to regulatory agencies, including the Board and Ministry of Natural Resources;
- act as a liaison with environmental regulators, government agencies and interest groups;
- provide immediate advice regarding spill prevention and contingency; and,
- ensure appropriate waste disposal of any hazardous construction wastes.

#### 4.0 Construction Effects and Mitigation Measures

Construction effects and mitigation measures which were implemented to minimize the potential effects the construction of the TKC#64 are summarized in Table 1. Photos of TKC#64 taken in July 2014 are found in Appendix B. All activities were conducted in adherence to the contract documentation and Enbridge Construction Policies and Procedures.

**Table 1.**

#### **Construction Effects and Mitigation Measures**

<b>Activity</b>	<b>Duration</b>	<b>Potential Effect</b>	<b>Mitigation Measures</b>
Vegetation Cover	Throughout Construction (July 2012 – November 2012)	Permanent removal of vegetation. Aesthetic degradation. Changes in surface drainage patterns affecting amount of water available. Changes to sunlight or wind exposure regimes.	Limits of work area marked to minimize encroachment into vegetated areas.
Topsoil Handling	Throughout Construction	Disruption of surface and subsurface soils. Soil mixing may result in loss of productivity.	Contractor stripped topsoil and stockpiled separately from subsoil. Mixing of soils was minimized. Segregated topsoil was replaced on surface following construction. Topsoil was tilled prior to cultivation.
Bedrock	Throughout Construction	Large amounts of drill cuttings and fluids are encountered and removed from the drill hole. Rock materials in drill cuttings are mostly limestone and dolomite with some shale and salt.	Drill fluids were collected in holding tanks and allowed to settle. Fluid was recycled and used again. Remaining fluid was solidified with a bonding agent and disposed of according to MOE Regulations.

Climate	Throughout Construction	Heavy rainfall may result in flooding of adjacent lands, erosion and compaction and rutting (if construction persists). High winds may erode loose soil material, including topsoil and create nuisance dust.	During wet soil conditions construction on agricultural lands were suspended. Work resumed only upon approval by Chief Inspector. Nuisance dust was controlled by applying water to work area (if required).
Groundwater	Throughout Construction	During well drilling the water table may be breached and the supply of water to adjacent water wells be affected temporarily.	Prior to drilling (Nov. 23, 2011) contracted Stanted Consulting Ltd. to conduct a Baseline Residential / Private Well Monitoring Program (Report completed March 6, 2012)
Noise	Throughout Construction	Disturbances to sensitive receptors (i.e. residents).	Construction equipment conformed to guidelines for sound and emission levels.
Tile Drainage	May 2013	Disturbance to existing tile drainage system	Installed tile drain along east side of driveway; repair and reconnect tile drain temporarily blocked for drilling of well.
Spills	Throughout Construction	Contamination of air, soil, surface water or ground water. Inconvenience to landowners and public	As required, contractor had spill containment kits at the project site.
Clean-Up	Throughout Construction	Restores the storage well easement to pre-construction conditions.	Clean up activities were conducted in accordance with the Enbridge Construction Manual.

## 5.0 Residual Issues

Overall, construction activities were carried out with a high level of respect for the environment. There are no unresolved issues that remain at the time of completion of this report (July 2014) for the TKC#64 storage well.

## 6.0 Landowner Comments

No landowner or public comments were received as part of the construction of TKC #64. However, an enquiry was received from the Ministry of Environment which has originated from a comment from a tenant farmer on the subsequent processing of drill cuttings from TKC #64. Details of the enquiry and action taken can be found in Appendix B. There are no unresolved issues in regards to this comment.

## **7.0 Summary**

This Final Post-Construction Environmental Monitoring Report has been prepared in accordance with the Board Decision Docket No. EB-2012-0060. It documents construction and clean-up activities between July 2012 and May 2013. In general, measures implemented during construction and clean-up have been successful and no further restoration work is required.



**APPENDIX A**  
**STORAGE WELL LOCATION MAP**

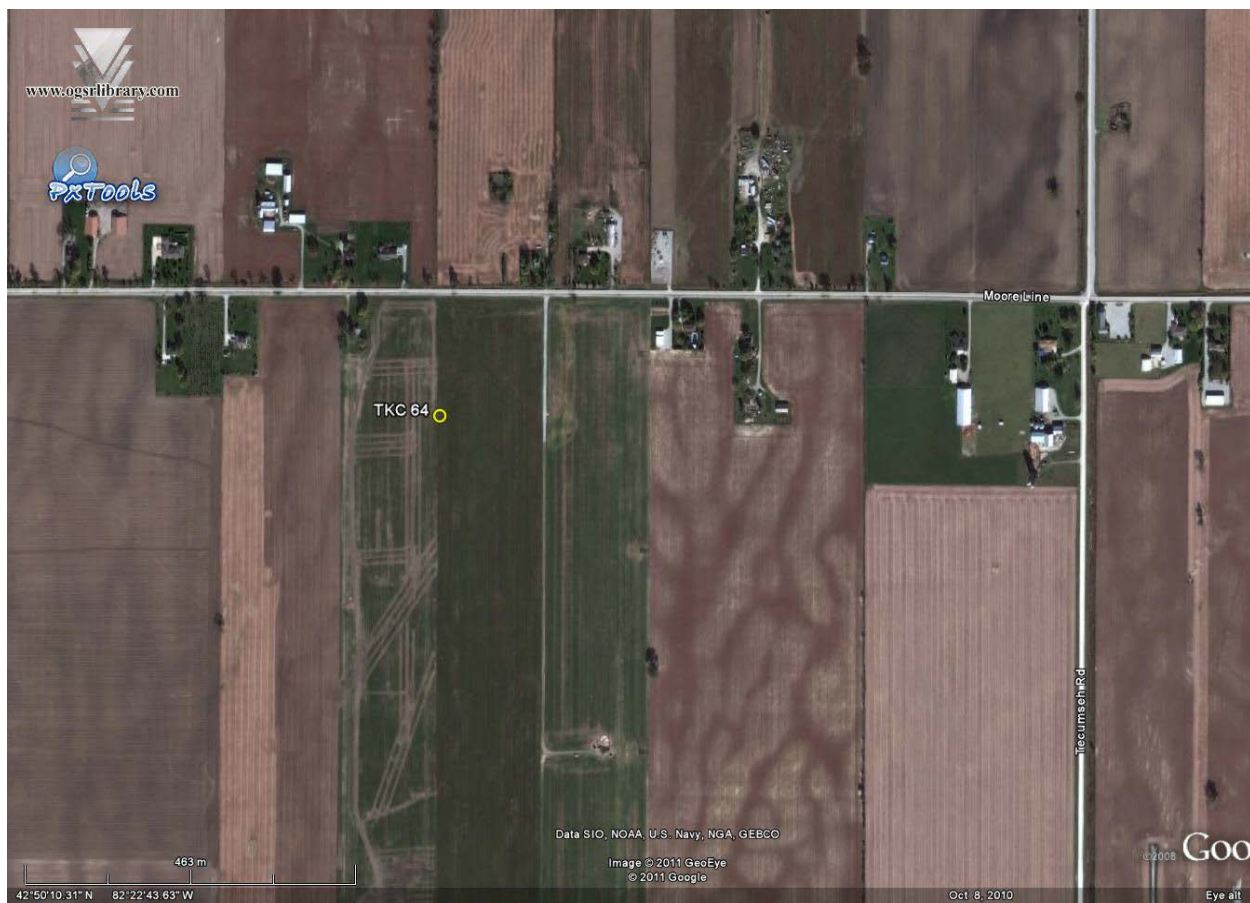


Figure 1 – Location of TKC 64

**APPENDIX B**  
**COMMENT LOG**

Time and Date of Enquiry	Substance of Enquiry	Actions Taken and Rationale
August 28, 2013	Mr. Tom Wilson (tenant farmer) contacted Mr. Burk Morgan with the Ministry of the Environment, Sarnia office regarding the dust produced during the drill cutting solidification process.	Enbridge supplied Mr. Morgan with a copy of the MSDS sheet for the solidification agent and a copy of the procedure used to mix the cuttings. Mr. Morgan also requested to observe the solidification process and was satisfied with the activities. He requested the procedure prohibit solidification activities if the wind was too strong and that operations would be suspended if the wind direction changed allowing the dust to blow outside of the work area onto the adjacent crops. Updated procedures were submitted to Mr. Morgan. No further follow-up required.

**APPENDIX C**  
**PHOTO LOG**



Photo 1 – TKC#64 looking north



Photo 2 – TKC #64 Looking south





Photo 3: TKC #64 Looking south



Photo 4: TKC #64 Looking west

**ENBRIDGE GAS DISTRIBUTION INC.  
POST-CONSTRUCTION  
ENVIRONMENTAL MONITORING REPORT NO.2**

**TECUMSEH GAS STORAGE WELL TKC#65  
EB-2012-0060**

Prepared by  
Enbridge Gas Distribution Inc.  
July 9, 2014



## Table of Contents

### Description

1.0 Introduction	Page 1
2.0 Project Description	Page 2
3.0 Environmental Inspection	Page 2
4.0 Construction Effects and Mitigation Measures	Page 3
5.0 Residual Issues	Page 4
6.0 Landowner Comments and Complaints	Page 4
7.0 Summary	Page 5

## Appendices

### APPENDIX A: STORAGE WELL LOCATION MAP

Figure 1: Map of Location of Gas Storage Well TKC#65	Page 7
--	--------

### APPENDIX B: PHOTOLOG

## 1.0 Introduction

On June 28, 2012 the Ontario Energy Board (“Board”) under docket number EB-2012-0060 granted Enbridge Gas Distribution Inc. (“Enbridge”) permission to drill and operate an observation well (TKC#65, Moore 1-14-IV) in the Kimball-Colinville Storage Pool. Prior to obtaining approval, Enbridge conducted the following studies to identify potential impacts resulting from construction, and prepare mitigative measures to minimize environmental and socio-economic impacts.

<b><u>Report Title</u></b>	<b><u>Conducted by:</u></b>	<b><u>Date</u></b>
Environmental Report: Tecumseh Storage Enhancement Project – Storage Infill Drilling	Stantec Consulting Limited	March 2008
Environmental Screening Report – Proposed Observation Well TKC #64 – Environmental Screening Report ( <i>this report was based on the Stantec report above</i> )	Enbridge Gas Distribution Inc.	January 2012
Baseline Residential/Private Well Monitoring Program, Natural Gas Storage Pools, Lambton County	Stantec Consulting Ltd.	March 6, 2012

Construction of this well began on July 14, 2012 and was completed on December 15, 2012. The storage well was commissioned on October 19, 2012.

This report has been prepared in accordance with Board EB-2012-0060 Board Staff Proposed Conditions of Approval as described below:

- 3.1 Both during and after construction, Enbridge shall monitor the impacts of construction, and shall file four copies of both an interim and a final monitoring report with the Board and the Ministry of Natural Resources. The interim monitoring report shall be filed within six months of the in-service date, and the final monitoring report shall be filed within fifteen months of the in-service date. Enbridge shall attach a log of all comments and complaints that have been received to the interim and final monitoring reports. The log shall record the times of all comments and complaints received, the substance of each comment and complaint, the actions taken in response, and the reasons underlying such actions.

3.2 The interim monitoring report shall confirm Enbridge's adherence to Condition 1.1 and shall include a description of the impacts noted during construction and the actions taken or to be taken to prevent or mitigate the long-term effects of the impacts of construction. This report shall describe any outstanding concerns identified during construction.

3.3 The final monitoring report shall describe the condition of the rehabilitated land and the effectiveness of the mitigation measures undertaken. The results of the monitoring programs and analysis shall be included and recommendations made as appropriate. Any deficiency in compliance with any of the Conditions of Approval shall be explained.

This report is limited to items that have been identified prior to July 8, 2014. Prior to construction there were many activities conducted related to this pipeline project, including an environmental screening and water well monitoring investigation. The environmental mitigation measures are discussed here and there are no water well issues. This report will concentrate on construction impacts and will summarize that all disturbed or impacted areas due to construction activities have been revisited to ensure they are restored to their original state or better and that Enbridge does not foresee any future issues related to this construction.

## **2.0 Project Description**

TKC #65 observation well is one of three observation wells drilled in the Kimball-Colinville Storage Pool. The wells were designed to help Enbridge monitor the gas content and pressure in the underground storage area. The Kimball-Colinville Storage Pool is located primarily under Lots 17, 18 and 19 and Concessions V, VI, VII and VIII in St. Clair Township. TKC#65 is located approximately 113 m south of Courtright Line, and 850 m west of Waubuno Road in St. Clair Township in the County of Lambton. Appendix A shows the storage well within a regional context.

## **3.0 Environmental Inspection**

In order to ensure that environmental commitments were honoured and that the best industry practices were used, a full time inspector was onsite. In general, the duties of the inspector included the following items:

- provide advice to the Project Manager and all construction personnel regarding compliance with environmental legislation, regulations and industry standards;
- provide advice regarding adherence to environmental specifications and commitments made in the previously mentioned documents and to regulatory agencies, including the OEB and Ministry of Natural Resources;
- act as a liaison with environmental regulators, government agencies and interest groups;
- provide immediate advice regarding spill prevention and contingency; and,
- ensure appropriate waste disposal of any hazardous construction wastes.

#### 4.0 Construction Effects and Mitigation Measures

Construction effects and mitigation measures which were implemented to minimize the potential effects the construction of the TKC#65 are summarized in Table 1. Photos of TKC#65 taken in July 2014 are found in Appendix B. All activities were conducted in adherence to the contract documentation and Enbridge Construction Policies and Procedures.

**Table 1.**

##### **Construction Effects and Mitigation Measures**

<b>Activity</b>	<b>Duration</b>	<b>Potential Effect</b>	<b>Mitigation Measures</b>
Vegetation Cover	Throughout Construction (July 2012 – October 2012)	Permanent removal of vegetation. Aesthetic degradation. Changes in surface drainage patterns affecting amount of water available. Changes to sunlight or wind exposure regimes.	Limits of work area marked to minimize encroachment into vegetated areas.
Topsoil Handling	Throughout Construction	Disruption of surface and subsurface soils. Soil mixing may result in loss of productivity.	Contractor stripped topsoil and stockpiled separately from subsoil. Mixing of soils was minimized. Segregated topsoil was replaced on surface following construction. Topsoil was tilled prior to cultivation.
Bedrock	Throughout Construction	Large amounts of drill cuttings and fluids are encountered and removed from the drill hole. Rock materials in drill cuttings are mostly limestone and dolomite with some shale and salt.	Drill fluids were collected in holding tanks and allowed to settle. Fluid was recycled and used again. Remaining fluid was solidified with a bonding agent and disposed of according to MOE Regulations.

**Table 1; Cont.**

Climate	Throughout Construction	Heavy rainfall may result in flooding of adjacent lands, erosion and compaction and rutting (if construction persists). High winds may erode loose soil material, including topsoil and create nuisance dust.	During wet soil conditions construction on agricultural lands were suspended. Work resumed only upon approval by Chief Inspector. Nuisance dust was controlled by applying water to work area (if required).
Groundwater	Throughout Construction	During well drilling the water table may be breached and the supply of water to adjacent water wells be affected temporarily.	Prior to drilling (Nov. 23, 2011) contracted Stanted Consulting Ltd. to conduct a Baseline Residential / Private Well Monitoring Program (Report completed March 6, 2012)
Noise	Throughout Construction	Disturbances to sensitive receptors (i.e. residents).	Construction equipment conformed to guidelines for sound and emission levels.
Tile Drainage	May 2013	Disturbance to existing tile drainage system	Installed stone bed over tile drainage in southeast corner of drill pad (at request of landowner)
Spills	Throughout Construction	Contamination of air, soil, surface water or ground water. Inconvenience to landowners and public	As required, contractor had spill containment kits at the project site.
Clean-Up	Throughout Construction	Restores the storage well easement to pre-construction conditions.	Clean up activities were conducted in accordance with the Enbridge Construction Manual.

## **5.0 Residual Issues**

Overall, construction activities were carried out with a high level of respect for the environment. There are no unresolved issues that remain at the time of completion of this report (July 2014) for the TKC#65 storage well.

## **6.0 Landowner Comments and Complaints**

No landowner or public comments or complaints were received as part of the construction of TKC #65.

## **7.0 Summary**

This Final Post-Construction Environmental Monitoring Report has been prepared in accordance with the Board Decision Docket No. EB-2012-0060. It documents construction and clean-up activities between July 2012 and December 2012. In general, measures implemented during construction and clean-up have been successful.

**APPENDIX A**  
**STORAGE WELL LOCATION MAP**

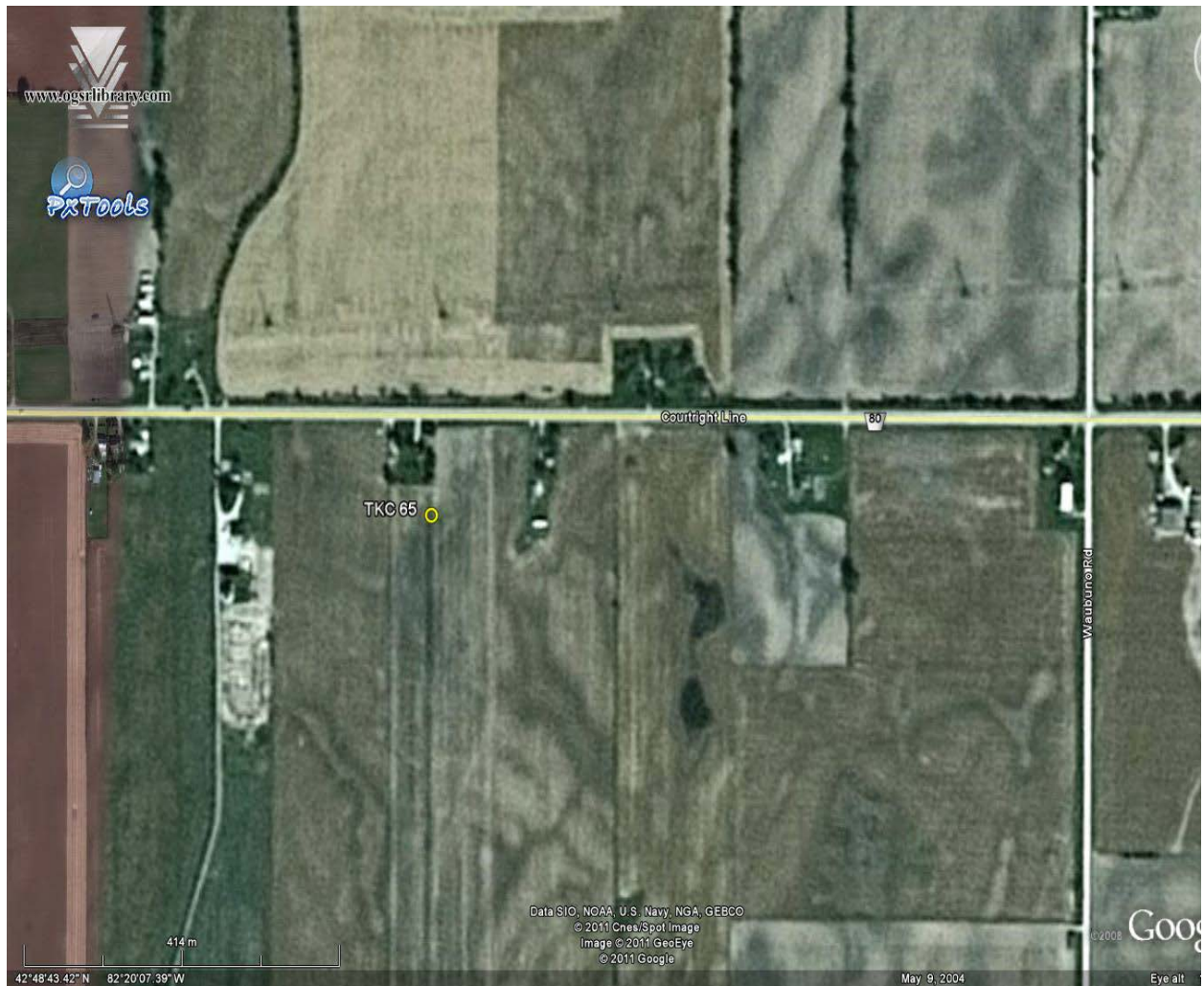


Figure 1 – Location of TKC 65



**APPENDIX B**  
**PHOTO LOG**



Photo 1 – TCK#65 Looking east



Photo 2 – TCK #65 Looking north





Photo 3: TKC #65 Looking south



Photo 4: TKC #65 Looking east

**ENBRIDGE GAS DISTRIBUTION INC.  
POST-CONSTRUCTION  
ENVIRONMENTAL MONITORING REPORT NO.2**

**TECUMSEH GAS STORAGE WELL TKC#66  
EB-2012-0060**

Prepared by  
Enbridge Gas Distribution Inc.  
July 9, 2014

## Table of Contents

### Description

1.0 Introduction	Page 1
2.0 Project Description	Page 2
3.0 Environmental Inspection	Page 2
4.0 Construction Effects and Mitigation Measures	Page 3
5.0 Residual Issues	Page 4
6.0 Landowner Comments and Complaints	Page 4
7.0 Summary	Page 5

## Appendices

### APPENDIX A: STORAGE WELL LOCATION MAP

Figure 1: Map of Location of Gas Storage Well TKC#66	Page 7
--	--------

### APPENDIX B: PHOTOLOG

## 1.0 Introduction

On June 28, 2012 the Ontario Energy Board (“Board”) under docket number EB-2012-0060 granted Enbridge Gas Distribution Inc. (“Enbridge”) permission to drill and operate an observation well (TKC#66, Moore 1-16-VIII) in the Kimball-Colinville Storage Pool. Prior to obtaining approval, Enbridge conducted the following studies to identify potential impacts resulting from construction, and prepare mitigative measures to minimize environmental and socio-economic impacts.

<b><u>Report Title</u></b>	<b><u>Conducted by:</u></b>	<b><u>Date</u></b>
Environmental Report: Tecumseh Storage Enhancement Project – Storage Infill Drilling	Stantec Consulting Limited	March 2008
Environmental Screening Report – Proposed Observation Well TKC #64 – Environmental Screening Report ( <i>this report was based on the Stantec report above</i> )	Enbridge Gas Distribution Inc.	January 2012
Baseline Residential/Private Well Monitoring Program, Natural Gas Storage Pools, Lambton County	Stantec Consulting Ltd.	March 6, 2012

Construction of this well began on November 9, 2012 and was completed on May 11, 2013. The storage well was commissioned on April 17, 2013.

This report has been prepared in accordance with Board EB-2012-0060 Board Staff Proposed Conditions of Approval as described below:

- 3.1 Both during and after construction, Enbridge shall monitor the impacts of construction, and shall file four copies of both an interim and a final monitoring report with the Board and the Ministry of Natural Resources. The interim monitoring report shall be filed within six months of the in-service date, and the final monitoring report shall be filed within fifteen months of the in-service date. Enbridge shall attach a log of all comments and complaints that have been received to the interim and final monitoring reports. The log shall record the times of all comments and complaints received, the substance of each comment and complaint, the actions taken in response, and the reasons underlying such actions.

- 3.2 The interim monitoring report shall confirm Enbridge's adherence to Condition 1.1 and shall include a description of the impacts noted during construction and the actions taken or to be taken to prevent or mitigate the long-term effects of the impacts of construction. This report shall describe any outstanding concerns identified during construction.
- 3.3 The final monitoring report shall describe the condition of the rehabilitated land and the effectiveness of the mitigation measures undertaken. The results of the monitoring programs and analysis shall be included and recommendations made as appropriate. Any deficiency in compliance with any of the Conditions of Approval shall be explained.

This report is limited to items that have been identified prior to July 8, 2014. Prior to construction there were many activities conducted related to this pipeline project, including an environmental screening and water well monitoring investigation. The environmental mitigation measures are discussed here and there are no water well issues. This report will concentrate on construction impacts and will summarize that all disturbed or impacted areas due to construction activities have been revisited to ensure they are restored to their original state or better and that Enbridge does not foresee any future issues related to this construction.

## **2.0 Project Description**

TKC#66 observation well is one of three observation wells drilled in the Kimball-Colinville Storage Pool. The wells were designed to help Enbridge monitor the gas content and pressure in the underground storage area. The Kimball-Colinville Storage Pool is located primarily under Lots 17, 18 and 19 and Concessions V, VI, VII and VIII in St. Clair Township. TKC#66 is located approximately 117 m south of Rokeby Line, and 119.5 m west of Kimball Road in St. Clair Township in the County of Lambton. Appendix A shows the storage well within a regional context.

## **3.0 Environmental Inspection**

In order to ensure that environmental commitments were honoured and that the best industry practices were used, a full time inspector was onsite. In general, the duties of the inspector included the following items:

- provide advice to the Project Manager and all construction personnel regarding compliance with environmental legislation, regulations and industry standards;
- provide advice regarding adherence to environmental specifications and commitments made in the previously mentioned documents and to regulatory agencies, including the Board and Ministry of Natural Resources;
- act as a liaison with environmental regulators, government agencies and interest groups;
- provide immediate advice regarding spill prevention and contingency; and,
- ensure appropriate waste disposal of any hazardous construction wastes.

#### 4.0 Construction Effects and Mitigation Measures

Construction effects and mitigation measures which were implemented to minimize the potential effects the construction of the TKC#66 are summarized in Table 1. Photos of TKC#66 taken in July 2014 are found in Appendix B. All activities were conducted in adherence to the contract documentation and Enbridge Construction Policies and Procedures.

**Table 1.**

##### **Construction Effects and Mitigation Measures**

<b>Activity</b>	<b>Duration</b>	<b>Potential Effect</b>	<b>Mitigation Measures</b>
Vegetation Cover	Throughout Construction (November 2012 – April 2013)	Permanent removal of vegetation. Aesthetic degradation. Changes in surface drainage patterns affecting amount of water available. Changes to sunlight or wind exposure regimes.	Limits of work area marked to minimize encroachment into vegetated areas.
Topsoil Handling	Throughout Construction	Disruption of surface and subsurface soils. Soil mixing may result in loss of productivity.	Contractor stripped topsoil and stockpiled separately from subsoil. Mixing of soils was minimized. Segregated topsoil was replaced on surface following construction. Topsoil was tilled prior to cultivation.
Bedrock	Throughout Construction	Large amounts of drill cuttings and fluids are encountered and removed from the drill hole. Rock materials in drill cuttings are mostly limestone and dolomite with some shale and salt.	Drill fluids were collected in holding tanks and allowed to settle. Fluid was recycled and used again. Remaining fluid was solidified with a bonding agent and disposed of according to MOE Regulations.



**Table 1; Cont.**

Climate	Throughout Construction	Heavy rainfall may result in flooding of adjacent lands, erosion and compaction and rutting (if construction persists). High winds may erode loose soil material, including topsoil and create nuisance dust.	During wet soil conditions construction on agricultural lands were suspended. Work resumed only upon approval by Chief Inspector. Nuisance dust was controlled by applying water to work area (if required).
Groundwater	Throughout Construction	During well drilling the water table may be breached and the supply of water to adjacent water wells be affected temporarily.	Prior to drilling (Nov. 23, 2011) contracted Stanted Consulting Ltd. to conduct a Baseline Residential / Private Well Monitoring Program (Report completed March 6, 2012)
Noise	Throughout Construction	Disturbances to sensitive receptors (i.e. residents).	Construction equipment conformed to guidelines for sound and emission levels.
Livestock	November 2012	Disturbance to horses belonging to landowner in vicinity of well drilling due to noise	Installed temporary fencing along wellsite and driveway to protect horses during well drilling operations
Spills	Throughout Construction	Contamination of air, soil, surface water or ground water. Inconvenience to landowners and public	As required, contractor had spill containment kits at the project site.
Clean-Up	Throughout Construction	Restores the storage well easement to pre-construction conditions.	Clean up activities were conducted in accordance with the Enbridge Construction Manual.

## **5.0 Residual Issues**

Overall, construction activities were carried out with a high level of respect for the environment. There are no unresolved issues that remain at the time of completion of this report (July 2014) for the TKC#66 storage well.

## **6.0 Landowner Comments and Complaints**

No landowner or public comments or complaints were received as part of the construction of TKC #66.

## **7.0 Summary**

This Final Post-Construction Environmental Monitoring Report has been prepared in accordance with the OEB Decision Docket No. EB-2012-0060. It documents construction and clean-up activities between November 2012 and May 2013. In general, measures implemented during construction and clean-up have been successful.

**APPENDIX A**  
**STORAGE WELL LOCATION MAP**

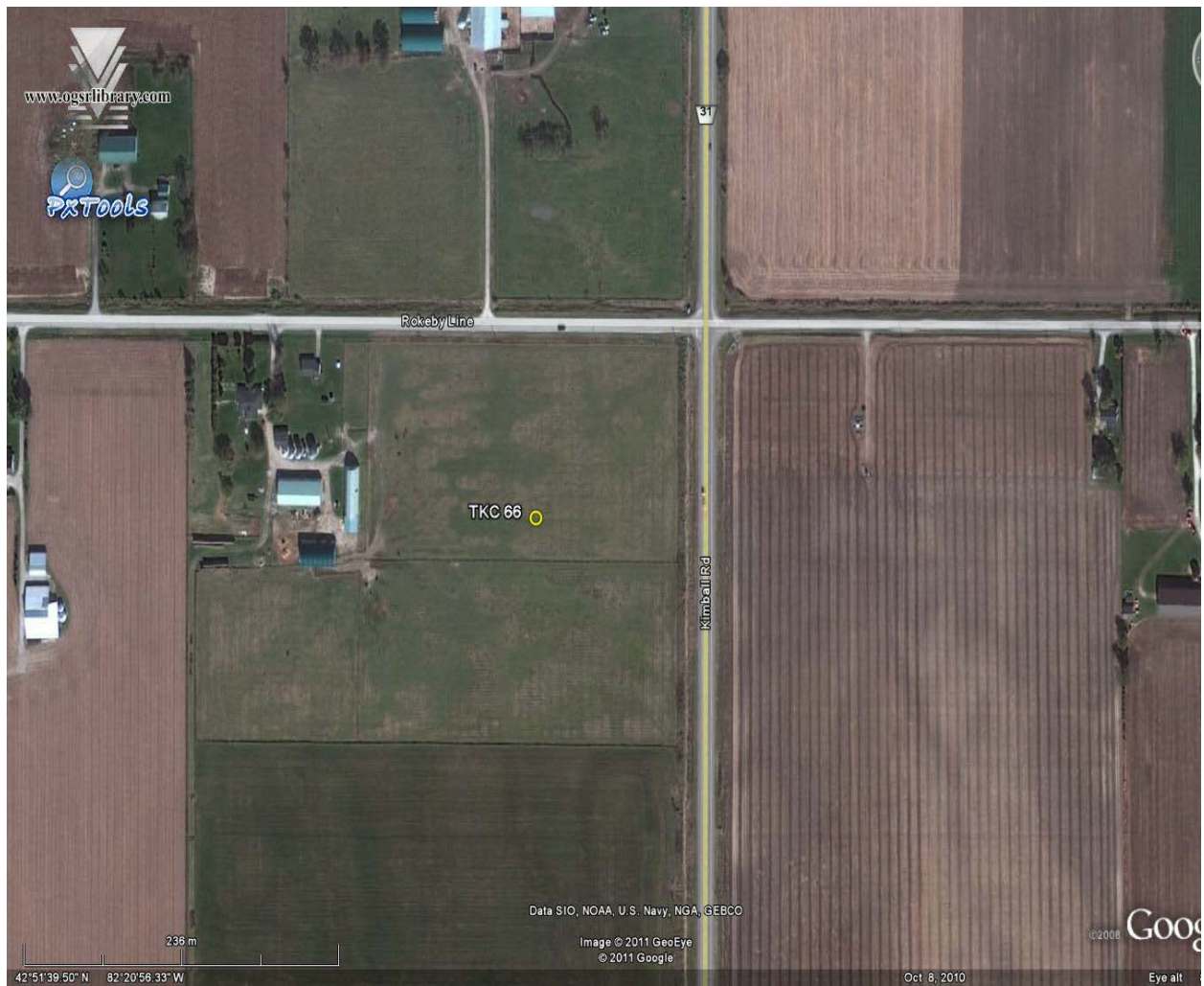


Figure 1 – Location of TKC 66

**APPENDIX B**  
**PHOTO LOG**



Photo 1 – TKC#66 looking north



Photo 2 – TKC #66 Looking south





Photo 3: TKC #66 Looking west



Photo 4: TKC #66 Looking east