

August 22, 2014

VIA COURIER, EMAIL, RESS

Ms. Kirsten Walli
Board Secretary
Ontario Energy Board
2300 Yonge Street, 27th Floor
Toronto, ON
M4P 1E4

Dear Ms. Walli:

**Re: EB-2011-0140: East-West Tie Line Designation
Monthly Report - August 22, 2014**

Enclosed for filing is the monthly report for Upper Canada Transmission, Inc. ("NextBridge"), a copy of which was filed through RESS earlier today.

Yours truly,

(Original Signed)

Tania Persad
Senior Legal Counsel, Enbridge Gas Distribution Inc.

ONTARIO ENERGY BOARD

IN THE MATTER OF sections 70 and 78 of the *Ontario Energy Board Act, 1998*;

AND IN THE MATTER OF a Board-initiated proceeding to designate an electricity transmitter to undertake development work for a new electricity transmission line between Northeast and Northwest Ontario: the East-West Tie Line.

**UPPER CANADA TRANSMISSION, INC.
(d/b/a NextBridge Infrastructure)**

Monthly Report

August 22, 2014

1. By the *Decision and Order* dated August 7, 2013 (Decision), the Ontario Energy Board (OEB or Board) decided that the designated transmitter for the development phase of the proposed East-West Tie Line (EWT Project) is NextBridge Infrastructure (NextBridge).
2. In accordance with Ordering Paragraph 2 (page 42) of the Decision and the Board's September 26, 2013 *Decision and Order regarding Reporting by Designated Transmitter*, NextBridge provides this monthly report. This report reflects the financial status of development work on the EWT Project through July 31, 2014. Other aspects of this report are current as of the close of business on the last business day prior to the filing date.
3. This report is organized as follows:
 - (a) A summary report on overall EWT Project progress.
 - (b) A cost summary providing details for each cost category included in NextBridge's Board approved development cost budget of: i) actual costs

to date; ii) percentage of budgeted costs spent to date; iii) updated budget forecast (if applicable); and iv) forecast variance. Reasons for any forecast variance and associated mitigating measures for negative forecast variances are also provided.

- (c) A summary of the status of NextBridge's Board approved development milestones, indicating those that are complete and the status (i.e. on schedule, ahead of schedule or delay/potential delay) of those in progress. If any delay or potential delay in achievement of any of the milestones has been identified, the reasons for the delay, the magnitude and impact of the delay on the broader development schedule and cost, and mitigating steps that have been or will be taken, are reviewed.
- (d) A summary of risks and issues that have arisen during development work, including discussion of potential impact of any such developments on schedule, cost or scope, and discussion of options for mitigating or eliminating the risk or issue. This section also provides an update on any previously identified risks or issues.

Overall Project Progress

- 4. Overall during this period, work towards all milestones continued to progress and the EWT Project is on schedule.
- 5. In respect of engineering work:
 - (a) engineering efforts continue in support of completing aerial surveys, with a few remaining locations scheduled to be flown later in August;
 - (b) detailed engineering of the lattice tower structures in support of the fabrication, assembly and testing of prototypes remains in progress and the materials are being procured for testing prototype towers, which is scheduled to commence in September;
 - (c) third party inspection services are being sourced for the fabrication and testing of prototype towers;
 - (d) surveying and LIDAR data processing is currently underway and mobilization of the geotechnical testing crews is pending Ministry of Natural Resources & Forestry (MNRF) approval for access to Crown Lands; and
 - (e) Request for expression of interest for general contractor services for the EWT Project has been issued.

6. In respect of route selection, land/ROW acquisition and community/municipal consultation activities, discussions with landowners, permitting agencies and other stakeholders have continued.

(a) Activities within the community/municipal consultation area included:

- (i) completed publication and distribution of Notice of Commencement of Environmental Assessment and Open Houses (Round Two). The Notice of Commencement was published in multiple newspapers starting on August 5, 2014, and notification materials were distributed starting on August 1, 2014. Copies of the Notice of Commencement and notification materials are attached to this report for the information of the Board at Schedule A. The notification materials will also be available to the public and identified potentially impacted individuals and groups throughout consultation activities, at the scheduled open houses, in local advertisements, on EWT Project's website – www.nextbridge.ca, and through land agent interactions in the field. Some notification materials have also been translated into French for appropriate publication and distribution;
- (ii) updated NextBridge's website with Notice of Commencement of Environmental Assessment and Open Houses (Round Two) and listing of locations and dates;
- (iii) hosted four EWT Project Open Houses (Round Two) at Dorion, Marathon, Schreiber, and Thunder Bay the week of August 18, 2014. Two final Open Houses (Round Two) are scheduled for White River on August 22, and Wawa on August 23, 2014;
- (iv) continued engagement with members of a Dorion area citizens group proposing alternative routes for consideration; and
- (v) finalized and printed support materials, including various fact sheets, frequently asked questions and other public information documents, for Open Houses (Round Two). These materials were available at the Open Houses starting on August 18, 2014. Copies of the Open House materials available at the Open Houses are attached to this report for the information of the Board at Schedule B. These materials will also be available to the public and identified potentially impacted individuals and groups throughout consultation and engagement activities.

(b) Activities in respect of route selection and land/ROW acquisition included:

- (i) continued engagement and outreach with landowners potentially directly affected along the Reference Route and alternate routes still under consideration;
- (ii) meetings with Infrastructure Ontario to review its processes and expectations surrounding EWT Project activities;
- (iii) continued consultation with landowners (including corporate landowners, government ministries and local municipalities), Crown disposition and claim holders in support of obtaining consent for geotechnical studies and environmental assessment activity;
- (iv) continued response to landowner queries as received, including queries in connection with the Terms of Reference (ToR), current routes under consideration, the Land Acquisition program, and the EWT Project in general;
- (v) further review of the forms of agreement to be utilized for land acquisition purposes in light of the Board's revised filing requirements issued on July 31, 2014;
- (vi) completed preparation of two additional line lists to reflect new alternatives being considered as a result of the alternatives assessment being undertaken as part of the environmental assessment (EA) process. Engagement with landowners not previously engaged along these routes was commenced in late July with the distribution of a notification letter related to the EWT Project. Attached at Schedule C is a copy of the notification letter for the Board's information; and
- (vii) meeting with MNRF on August 19, 2014 to discuss tenure requirements, overall land processes and directly affected land use permit, leaseholder and Crown interest holders.

7. In respect of Aboriginal engagement, consultation and participation, activities included:

- (a) ongoing engagement activities with the 18 identified First Nation and Métis communities continues;
- (b) consultation activities with the six route First Nation communities has proven to be slow as economic participation activities have been given priority;

- (c) participation in a job fair event on the Missanabie Cree First Nation reserve on August 18, 2014;
 - (d) working with Long Lake #58 First Nation to organize a community event scheduled for August 24, 2014;
 - (e) providing a record of aboriginal consultation to the MNRF in support of NextBridge's request for geotechnical investigation permits;
 - (f) continued economic participation discussions with Bamkushwada group of First Nations (Fort William, Red Rock Indian Band, Pays Plat, Pic Mobert, Ojibways of Pic River and Michipicoten) and Métis Nation of Ontario; and
 - (g) continued discussions on ways Aboriginal communities can commercially participate in the EWT Project, as outlined in the Aboriginal Participation Plan (Schedule C) submitted as part of the EWT Project January 22, 2014 Monthly Report.
8. In respect of environmental assessment activities, work included:
- (a) continued consultation with the Ministry of Environment and Climate Change and MNRF in support of the EA;
 - (b) preparation of further responses to queries from MNRF regarding geotechnical drilling work;
 - (c) continued environmental site assessment field staff data collection in the EWT Project area;
 - (d) continued identification and evaluation of alternative routes;
 - (e) ongoing meetings with numerous interested parties in connection with the collection of socioeconomic data for the EA;
 - (f) continued meetings with mining claim holders; and
 - (g) submission of Stage 1 archaeological assessment to the Ministry of Tourism, Culture and Sport on August 11, 2014.
9. Additional general updates for the reporting period include:
- (a) On August 15, 2014 NextBridge received the preliminary executive summary of the draft System Impact Assessment (SIA) from the IESO for the EWT Project and provided it to Hydro One Networks Inc. (HONI) on the same day. HONI advises that it requires the full draft SIA to begin the

customer impact study. NextBridge is coordinating with the IESO to provide HONI the information it requires.

- (b) NextBridge continues financial review of its costs to date and forecast to January 28, 2015, as initially reported in the EWT Project July 22, 2014 Monthly Report. NextBridge has updated Table 1 to reflect areas in which the review has been completed, specifically Land Rights, Other Consultation and Interconnection Studies. NextBridge will update any remaining forecast amounts in subsequent Monthly Reports.
- (c) NextBridge has scheduled a performance based rate making (PBR) methodology stakeholder consultation session for September 10, 2014, and has sent out invitations to stakeholders. Invitations were sent out to intervenors from the EWT Project designation proceeding, as well as intervenors from the most recent Hydro One Networks Inc. transmission rate application proceeding (EB-2012-0031).

Cost Summary

10. Table 1, below, details for each cost category included in NextBridge's Board approved development cost budget: i) actual costs to date; ii) percentage of budgeted costs spent to date; iii) updated budget forecast (if applicable); and iv) forecast variance.

Table 1: Budgeted Costs Status

Cost Category	PROJECT TO DATE		TOTAL PROJECT ESTIMATE			
	Actual ¹	% of total budget	Forecast	Budget ²	Variance \$	Variance %
Budgeted						
Engineering, Design and Procurement Activity	\$3,194,621	30.3%	\$10,553,292	\$10,553,292	-	0%
Permitting and Licensing	29,143	61.6%	47,320	47,320	-	0%
Environmental and Regulatory Approvals	2,057,239	57.3%	3,592,680	3,592,680	-	0%
Land Rights (Acquisitions or options)	1,130,788	56.8%	1,991,000	1,991,000	-	0%
First Nation and Métis Consultation	863,331	50.1%	1,724,000	1,724,000	-	0%
Other Consultation	590,240	119.0%	1,022,554	496,001	(526,553)	(106.2)%
Regulatory (legal support, rate case and LTC filings)	630,372	64.0%	985,000	985,000	-	0%
Interconnection Studies	52,050	29.1%	100,000	179,000	79,000	44.1%
Project Management	1,137,925	87.5%	1,300,000	1,300,000	-	0%
Contingency (Engineering, Design and Procurement)	-	0%	1,082,155	1,529,708	447,553	29.3%
Total	\$9,685,709	43.2%	\$22,398,001	\$22,398,001	-	0%

11. As reported in the EWT Project March 21, 2014 Monthly Report, Land Rights had initially identified a cost reduction in its budget. As part of the mid-term financial

¹ "Actual" refers to actual costs plus estimated accruals.

² This total refers to the Development Phase budgeted amount as approved by the Board in file EB-2011-0140 Phase 2 Decision and Order dated August 7, 2013.

review, Land Rights has now identified additional expenditure required to address, among other things, added activity related to additional routes being considered as part of the alternatives assessment and review of the previously finalized forms of agreement due to revised Leave to Construct Filing Requirements.

12. With respect to Other Consultation, continued efforts to address substantial and increasing stakeholder and municipal interest have resulted in NextBridge identifying additional expenditure required over and above the amount reported in the EWT Project March 21, 2014 Monthly Report. As a result, Other Consultation has an increased budget requirement.
13. NextBridge has identified cost reductions in the Interconnection Studies' forecast.
14. Project Contingency is being drawn on for the net increases in Lands Rights' and Other Consultation's forecast.
15. Table 2, below, details costs to date not included in NextBridge's Board approved development cost budget. This table includes two categories of cost expressly excluded from the development cost budget filed by NextBridge: First Nation and Métis land acquisition costs and First Nation and Métis participation costs (see NextBridge Response to Interrogatory 26 to all applicants, attachment 1).
16. The "Other" category on Table 2 records unbudgeted costs that are, to date, for the most part related to the Notice of Appeal filed by Pic River in the Ontario Divisional Court in respect of the Decision.

Table 2: Unbudgeted Costs

Cost Category	Current month project to date Actual³	Prior month project to date Actual³
Not Budgeted		
First Nation and Métis Land Acquisition	\$ 7,332	\$ 7,332
First Nation and Métis Participation	973,493	791,598
Other Costs Not included in Budgeted Categories	224,660	224,755
Carrying Cost	26,032	18,908
Taxes and Duties	-	-
Total Not Budgeted	\$ 1,231,517	\$ 1,042,593

Development Milestone Summary

17. Table 3, below, provides a summary of the status of NextBridge's Board approved development milestones, indicating those that are complete and the status of those in progress (i.e. on schedule, ahead of schedule or delay/potential delay).
18. For each of the Board approved milestones, Table 3 provides:
 - (a) The Board approved milestone date.
 - (b) The status of those milestones due within 3 months of the reporting date.
 - (c) A "revised forecast date" if applicable, indicating NextBridge's current forecast of the date for completion of the relevant milestone if the current forecast differs from the Board approved date.
19. NextBridge has focused, for the purposes of this reporting, on the status of those milestones due within 3 months of the reporting date in order to highlight the development activities in respect of which efforts are primarily focused, and which are of most immediate relevance to project progress and status.

³ "Actual" refers to actual costs plus estimated accruals.

20. NextBridge does review its development schedule on a monthly basis, in conjunction with preparation of these monthly reports, and should an issue or risk regarding a milestone that is scheduled beyond 3 months from the reporting date be identified, NextBridge will nonetheless report on that issue or risk, and include an appropriate status indication and revised forecast date in Table 3.

Table 3: Milestone Progress and Status

Engineering Milestones

	Milestone	Board Approved Date	Status	Revised Forecast Date
1	Initiate engineering	13 Sep 2013	Completed	
2	Sign contract for engineering	31 Oct 2013	Completed	
3	Finalize design criteria for conductor and structure	31 Jan 2014	Completed	
4	Complete conductor optimization study	7 Mar 2014	Completed	
5	File request for a System Impact Assessment (SIA) with the IESO	12 Mar 2014	Completed	
6	Status report on progress toward finalization of structure choice	31 Mar 2014	Completed	
7	Obtain senior management approval of the structure configuration proposal	1 July 2014	Completed	
8	Complete aerial surveys	14 Oct 2014	On schedule	
9	Receive final SIA from the IESO	21 Nov 2014	On schedule	

Route Selection, Land/ROW Acquisition and Community/Municipal Consultation Milestones

	Milestone	Board Approved Date	Status	Revised Forecast Date
10	Prepare list of landowners along the ROW	10 Oct 2013	Completed	
11	Complete design of Landowner, Community and Municipal Consultation Plan	1 Nov 2013	Completed	
12	Commence negotiations or discussions with all landowners and permitting agencies	25 Nov 2013	Completed	May 30, 2014 as per EWT Project April 22, 2014 Monthly Report
13	Finalize proposed route and obtain senior management approval	1 Jul 2014	Completed	

Aboriginal Engagement, Consultation and Participation Milestones

	Milestone	Board Approved Date	Status	Revised Forecast Date
14	Send introductory correspondence to aboriginal communities	30 Aug 2013	Completed	
15	Initial meeting with Ministry of Energy regarding the MOU for delegation	15 Sept 2013	Completed	
16	Complete initial/introductory contact with all aboriginal communities identified by the Ministry of Energy	30 Sept 2013	Completed	
17	Sign MOU with Ministry of Energy regarding the delegation	5 Nov 2013	Completed	
18	Complete design of First Nations and Métis Participation Plan with community input	2 Jan 2014	Completed	
19	Complete design of First Nations and Métis Consultation Plan with community input	2 Jan 2014	Completed	

Environmental Assessment (Provincial) Milestones

	Milestone	Board Approved Date	Status	Revised Forecast Date
20	Consult with environmental agencies (Ministry of Environment, Ministry of Natural Resources, Parks Canada and Ontario Parks)	10 Oct 2013	Completed	
21	Issue notice of draft Terms of Reference (ToR) available for review	16 Jan 2014	Completed	
22	File Environmental Assessment ToR	28 Feb 2014	Completed	
23	Initiate wildlife, aquatics and early season vegetation assessments	1 May 2014	Completed	May 20, 2014 - as per EWT Project April 22, 2014 Monthly Report
24	Approval of Environmental Assessment ToR	3 Jul 2014	Pending response from Ministry of Environment as per EWT Project July 22, 2014 Monthly Report	Unknown

25	Complete Environmental Assessment Consultation Report	27 Jan 2015		
26	Submit Environmental Assessment to Ministry of Environment	27 Jan 2015		

Leave to Construct Milestone

	Milestone	Board Approved Date	Status	Revised Forecast Date
27	Submit Leave to Construct (LTC) application	28 Jan 2015		

21. With respect to milestone 24 (Approval of Environmental Assessment ToR), NextBridge understands that the ToR is still under review pending a final decision. At this time, NextBridge does not know when this decision will be made. NextBridge has commenced EA work in anticipation of receiving the decision within a reasonable time. If the approval is not received by early September, the overall project schedule may be negatively impacted.
22. In respect of the outstanding milestones, activity is currently on track to achieve the relevant milestones in accordance with the Board approved target dates.

Issues/Risks/Mitigation Summary

23. This section of NextBridge's monthly report provides a summary of risks and issues that have arisen during development work, including discussion on potential impact of any such developments on schedule, cost or scope, and of options for mitigating or eliminating the risk or issue.
24. There are no risks or issues that have arisen during development work to date in respect of which NextBridge has identified an impact on its development schedule, cost or scope of work.

Attachments to NextBridge Monthly Report

Schedule A

Notice of Commencement and notification materials

August 1, 2014

RE: Proposed NextBridge Infrastructure New East-West Tie Transmission Project – Commencement of Environmental Assessment and the Second Round of Open Houses

As you may be aware, NextBridge Infrastructure (NextBridge) is proposing to construct a new double-circuit 230 kilovolt (kV) electric power transmission line from Wawa to Thunder Bay. The new East-West Tie is anticipated to generally parallel the existing double-circuit 230 kV line corridor but avoids sensitive features crossed by the existing line. The proposed 430 kilometre line is needed to maintain a reliable, long-term supply of electricity in northwestern Ontario.

NextBridge anticipates approval of the proposed Terms of Reference for the new East-West Tie Transmission Project (Project) from the Minister of the Environment and Climate Change. In support of this anticipated approval, NextBridge has commenced the Environmental Assessment for the Project.

NextBridge will be hosting the second round of public Open Houses from August 18 to 23 as detailed in the attached Notice of Commencement of Environmental Assessment and Open Houses (Notice). The Notice will be published in local papers in the Project area in the weeks before the Open Houses. We encourage you to attend these events to learn more about the Project, talk to project staff, and provide input.

We would like to thank you for your continued participation in our engagement program for this Project. Your input is important to us. If you have any questions or concerns, or if you require further information regarding this Project, please call our toll-free phone line at 1-888-767-3006 or email info@nextbridge.ca and leave your contact information or visit our project web site at www.nextbridge.ca.

Sincerely,



Michael Power, P.Eng.
Project Director – East-West Tie Transmission Project
NextBridge Infrastructure

Si vous désirez ces informations en français, s'il vous plaît contactez NextBridge au 1-888-767-3006 ou info@nextbridge.ca.

Aboriginal Engagement

NextBridge continues to engage and consult with the 18 First Nation and Métis communities identified by the Crown. Activities relate to supporting the Environmental Assessment process and the delegated Duty to Consult, which includes participation in community meetings to provide project information and gathering traditional land use data. Along with engagement on consultation, NextBridge continues discussions with Aboriginal communities on potential commercial participation in the project.

Land and Property

NextBridge will engage landowners in an open and respectful manner, with a commitment to timely, meaningful and transparent dialogue as it relates to property owner compensation. The land acquisition process for the East-West Tie Project and the land compensation being offered will be coordinated in an equitable and consistent manner. These principles will be provided to directly affected landowners and be available at the upcoming Open Houses.

The initiation of the land acquisition process will begin in September 2014. NextBridge Land Agents will be contacting affected property owners to discuss the Compensation Principles and provide a formal offer of Compensation and Option Agreement for the project. NextBridge is committed to building and maintaining respectful relationships with landowners, municipalities and communities engaged in, and affected by its projects. It is NextBridge's preference to come to mutually acceptable arrangements with affected property owners. Our approach and principles will support and facilitate timely resolution and fair settlement.

Getting Involved

We would like to thank you for your ongoing participation in our consultation program for this project. Your input is important to us. If you have any questions or concerns, or if you require further information regarding this project, please contact:

Michael Power, P.Eng., Project Director
NextBridge Infrastructure
390 Bay Street, Suite 1720
Toronto, ON M5H 2Y2
Email: info@nextbridge.ca
Fax: 416-364-2533
Project Hotline: 1-888-767-3006

PAST & ANTICIPATED PROJECT SCHEDULE

PAST	
2010	Government of Ontario identifies the project as a Priority Project
2011	Minister of Energy asks the Ontario Energy Board (OEB) to undertake a designation process to select a transmitter to develop the project
2012	OEB directs bidders to the reference corridor and a proposed in-service date
Aug 2013	NextBridge selected as the designated transmitter to complete development work related to the project
Nov 2013	Notice of Commencement of Terms of Reference (TOR)
Dec 2013	Open Houses Round One
Feb 2014	Submission of TOR

CURRENT AND UPCOMING

Jul/Aug 2014	Anticipated TOR Approval and Environmental Assessment (EA) Commencement
Aug 2014	Open Houses Round Two
Sept 2014	Open Houses Round Three
Jan 2015	Submission of EA
Jan 2015	Submit Leave to Construct Application to OEB
Dec 2015	Ministry of the Environment and Climate Change Decision on EA

Additional Resources

We encourage you to become as informed as possible about this project. Please visit the web sites below for additional information about energy and environmental decision making in Ontario and about the new East-West Tie.

Ontario Energy Board
www.ontarioenergyboard.ca

Ontario Power Authority
www.powerauthority.on.ca
Independent Electricity System Operator
www.ieso.ca

Ministry of the Environment and Climate Change
www.ene.gov.on.ca
Ministry of Energy
www.energy.gov.on.ca

For more information on the new East-West Tie visit
www.nextbridge.ca

If you received this newsletter directly from NextBridge you are on our contact list for this project and we will continue sending you project information.

Newsletter

EAST-WEST TIE TRANSMISSION PROJECT

Issue 2 - July 2014

Connecting Ontario's Northwest

Project Update

After considerable study and engagement, the Terms of Reference for the East-West Tie Project Environmental Assessment was submitted to the Ministry of the Environment and Climate Change on February 28, 2014. Approval of the Terms of Reference is anticipated in the summer of 2014. In anticipation of this approval, field studies have begun, and NextBridge has developed compensation principles for potentially affected landowners.

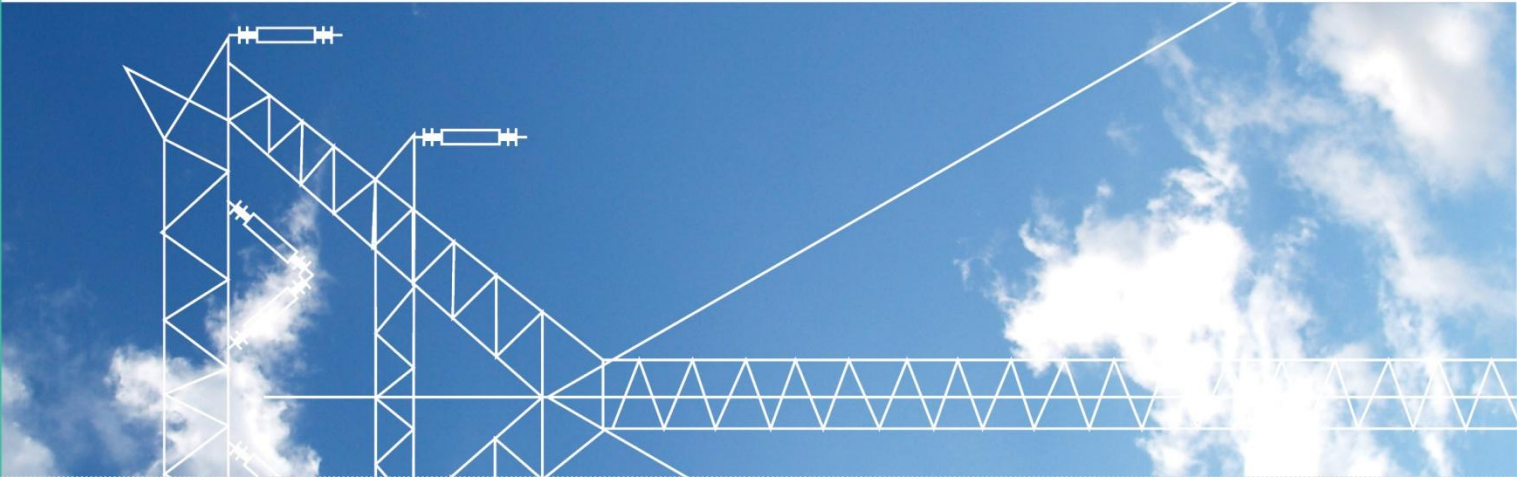
Please take the time to review this newsletter and consider attending one of the Open Houses scheduled in August. NextBridge representatives are always happy to discuss the project, so get in touch with us through any of the contact methods listed on the back of this newsletter. The more we can learn from you, the better the project will be.

Project Summary

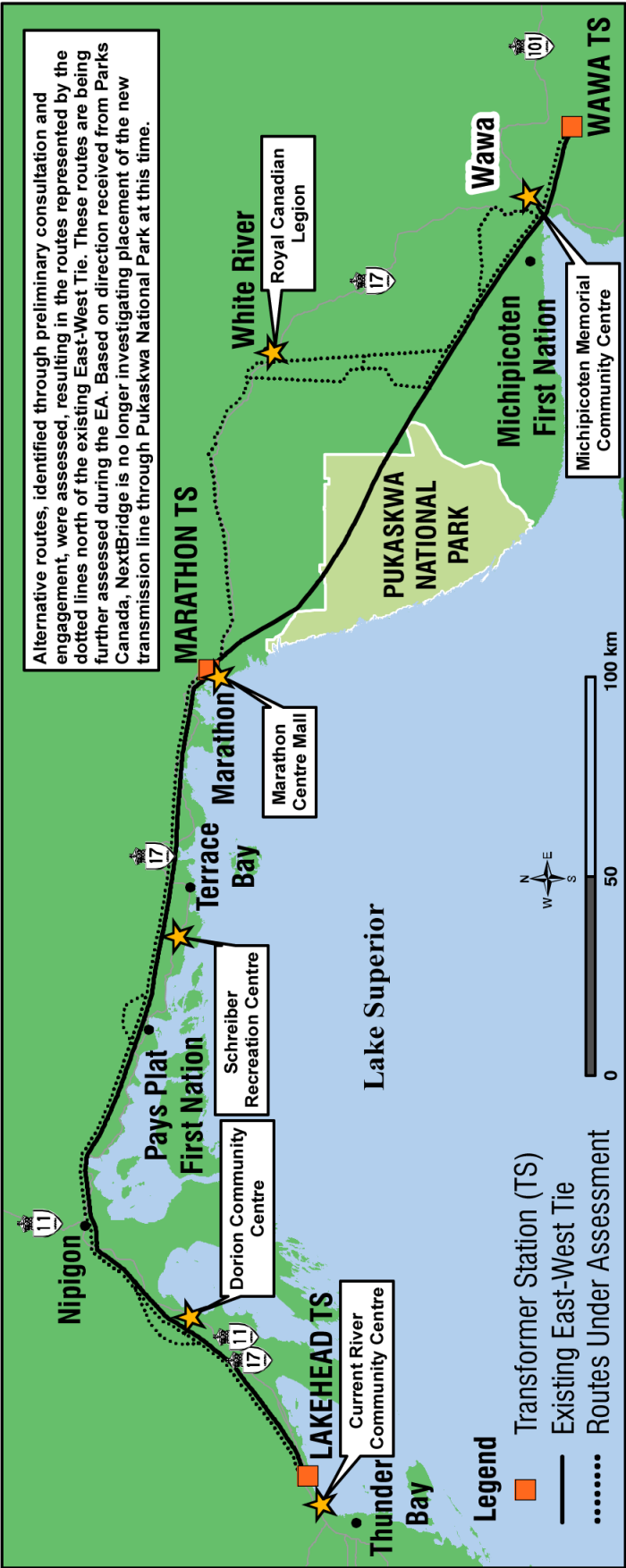
The new East-West Tie is an approximately 430 km double-circuit 230 kV transmission line from the Lakehead Transformer Station (TS) in Shuniah to the Wawa TS with a connection approximately mid-way at the Marathon TS.

The project is required to ensure the long-term reliability of the electricity supply in northwestern Ontario. Industrial activities in northwestern Ontario, particularly in the mining sector, are expected to drive strong electricity demand growth in the coming decade. Coupled with changes to the electricity supply in the area, the Ontario Power Authority has identified supply needs for the northwest, which can be met with additional transmission or generation. The OPA analyzed these alternatives and recommended expansion of the East-West Tie based on technical, economic and other considerations. The East-West Tie was included as a priority project in the Government of Ontario's 2010 Long Term Energy Plan. The target in-service date is the first half of 2018.

- For more information, please visit www.nextbridge.ca.



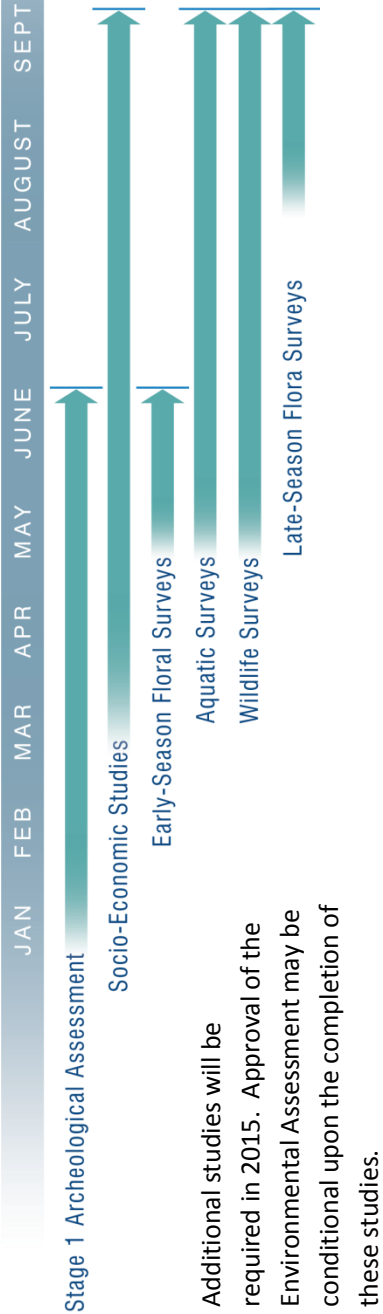
NEXTBRIDGE
INFRASTRUCTURE



What We’re Studying

Studies for the Environmental Assessment began early this year and will continue throughout 2014.

2014 ENVIRONMENTAL ASSESSMENT STUDIES



Field crews may be in your area conducting studies. They will not access your property without prior notice.

Opportunities for Public Input

The second round of Open Houses is scheduled from August 18 to 23. We received a tremendous amount of useful information at our first round of Open Houses last December and hope that you are able to attend one of our August events. If you attend, you’ll get to speak directly to NextBridge staff about the project and share your thoughts on the following topics:

- Environmental Assessment and Leave to Construct processes;
- Studies taking place during the Environmental Assessment;
- Routing considerations and decisions to date;
- Land and property matters; and,
- Next steps in the Environmental Assessment process.

All Open Houses, with the exception of the Wawa Open House, will take place from 4pm to 8pm. The Wawa Open House will take place from 10am to 2pm.

- **THUNDER BAY – August 18:** Current River Community Centre
- **DORION – August 19:** Dorion Community Centre
- **SCHREIBER – August 20:** Schreiber Recreation Centre
- **MARATHON – August 21:** Marathon Centre Mall (Scotia Bank Entrance)
- **WHITE RIVER – August 22:** Royal Canadian Legion Branch
- **WAWA – August 23:** Michipicoten Memorial Community Centre

Information presented at the Open Houses will be available on the project web site at www.nextbridge.ca.

Required Approvals

NextBridge must receive Environmental Assessment approval from the Ministry of the Environment and Climate Change, Leave to Construct approval from the Ontario Energy Board, and several other approvals before construction can begin.

LEAVE TO CONSTRUCT

The Leave to Construct application to the Ontario Energy Board is being completed in parallel with the Environmental Assessment. When the Ontario Energy Board receives a Leave to Construct application, it reviews the material, make the information public and provides an opportunity for interested parties, including First Nations and Métis communities, to provide input.

In carrying out its mandate, the Ontario Energy Board considers the impacts that the project may have on consumers with respect to prices, as well as matters that concern the reliability and quality of electricity service. The Ontario Energy Board will approve projects they consider to be in the public interest.

Route Selection Process

A Reference Route that generally parallels the existing East-West Tie was presented to you during the Terms of Reference. Valuable feedback from you led to the identification of alternatives to the Reference Route. These proposed alternatives have been evaluated over the past several months based on natural environment, socio-economic and technical criteria. This evaluation resulted in a refined list of potential routes. The routes currently under consideration are illustrated on the map above.

For most of the line, a single route parallel to and on the north side of the existing East-West Tie and north of an existing 115 kV transmission line (from Marathon to White River) is being further assessed.

Two or more routes are currently under assessment in four areas – in the Township of Dorion, in and around the First Nation communities of Pays Plat and Michipicoten, and from White River south to the existing East-West Tie. Although multiple alternatives are currently being assessed, only one preferred route will be identified through the Environmental Assessment and proposed for the East-West Tie.

We are eager to hear what you have to say about the evaluation process that led to these routes and any information you have to share about locations where there is more than one route currently under assessment.

ENVIRONMENTAL ASSESSMENT

The Terms of Reference was prepared late in 2013 and early 2014. During its preparation, consultation and engagement activities solicited input on the project and the Terms of Reference. One round of Open Houses was held in early December 2013 and a Draft Terms of Reference was released for public review and input.

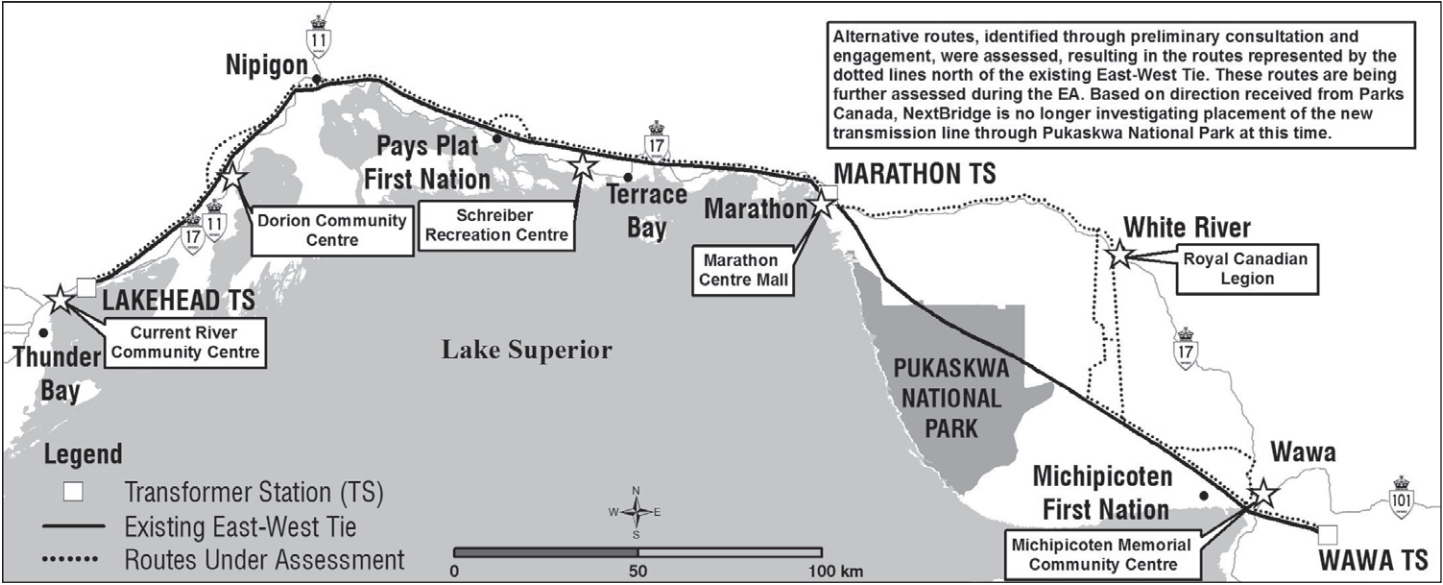
Your input was considered and changes were made to the Terms of Reference to address your concerns.

The proposed Terms of Reference was submitted to the Ministry of the Environment and Climate Change on February 28, 2014. It was subsequently revised in response to stakeholder comments and re-submitted on May 22, 2014. Approval of the Terms of Reference is anticipated in the summer of 2014. NextBridge has initiated the Environmental Assessment as outlined in the Terms of Reference.

Notice of Commencement of Environmental Assessment and Open Houses – New East-West Tie Transmission Project

NextBridge Infrastructure

NextBridge Infrastructure (NextBridge) – a partnership between NextEra Energy Canada, Enbridge Inc., and Borealis Infrastructure – has initiated an Environmental Assessment (EA) under the Environmental Assessment Act to construct a new, approximately 430 km double-circuit 230 kV transmission line connecting the Wawa Transformer Station (TS) to the Lakehead TS in the Municipality of Shuniah near Thunder Bay, with a connection at the Marathon TS. The new East-West Tie generally parallels an existing double-circuit 230 kV transmission line corridor (the existing East-West Tie) but avoids sensitive features crossed by the existing line. Routes under assessment are depicted on the map below.



The Ontario Power Authority (OPA), the provincial agency responsible for long-term electricity planning, identified the expansion of the transmission system between Wawa and Thunder Bay in order to maintain a reliable, long-term supply of electricity to northwestern Ontario. Industrial activities in northwestern Ontario, particularly in the mining sector, are expected to drive electricity demand growth in the coming decade. Coupled with changes to the electricity supply in the area, the OPA has identified supply needs for the northwest, which can be met with additional transmission or generation. The OPA analyzed these alternatives and recommended expansion of the East-West Tie based on technical, economic and other considerations. The East-West Tie was included as a priority project in the Government of Ontario’s 2010 Long Term Energy Plan. The target in-service date is the first half of 2018.

The Proposed Terms of Reference (ToR) document was submitted to the Ministry of the Environment and Climate Change on February 28, 2014. The Proposed ToR document was amended in response to stakeholder feedback and resubmitted on May 22, 2014. Approval of the Proposed ToR by the Minister of the Environment is expected. In anticipation of ToR approval, NextBridge has initiated data collection for the EA and will be holding Open Houses in support of the EA as indicated in this Notice. The EA will be carried out according to the approved ToR and the requirements of the *Environmental Assessment Act*.

A draft of the EA will be made available for review and comment. The EA will then be updated as required and submitted to the Ministry of the Environment and Climate Change for review, which will include an additional public review component. Notification will be given both for the Draft EA Review and the review associated with submission of the EA to the Ministry of the Environment and Climate Change. Notice will be provided indicating when and where the draft and finalized EA can be reviewed.

In accordance with the Aboriginal Duty to Consult delegated to NextBridge by the Crown, First Nations and Métis communities will be consulted on the route and the EA.

Public Open Houses Round Two

Active participation in the EA process is encouraged by contacting project staff with questions, comments and by attending Open Houses for the Project. Engagement and discussion opportunities, such as Open Houses, will be held throughout the EA and will be advertised through mailings, newspaper notices, and through postings at www.nextbridge.ca.

The first round of Open Houses was held during the development of the ToR. Two more rounds of Open Houses are planned for the EA. The second round is scheduled for the week of August 18, 2014. This round will provide an opportunity to learn about the Project, the EA and Leave to Construct processes, results of background studies and studies to take place during the EA, routing considerations and decisions to date, land and property matters and next steps in the EA process.

The second round of Open Houses is scheduled as follows:

August 18	August 19	August 20	August 21	August 22	August 23
4 p.m. – 8 p.m.	4 p.m. – 8 p.m.	4 p.m. – 8 p.m.	4 p.m. – 8 p.m.	4 p.m. – 8 p.m.	10 a.m. – 2 p.m. Wawa (lunch provided)
Thunder Bay	Dorion	Schreiber	Marathon Centre Mall	White River	Michipicoten Memorial
Current River	Dorion	Schreiber	(Scotia Bank Entrance)	Royal Canadian	Community Centre 3
Community Centre	Community Centre	Recreation Centre	2 Hemlo Dr.	Legion	Chris Simon Dr.
450 Dewe Ave.	175 Dorion Loop Rd.	100 Langworthy St.		108 Winnipeg St.	

Please note: Light refreshments will be available at all Open Houses. A light lunch will be provided at the Wawa Open House because it is on a Saturday.

Information presented at the Open Houses will be made available at www.nextbridge.ca for review and comment.

For further information on the proposed project, please contact:
Michael Power, Project Director, NextBridge Infrastructure
390 Bay Street, Suite 1720, Toronto, ON M5H 2Y2
Phone: 1-888-767-3006
E-mail: info@nextbridge.ca
Fax: 416-364-2533
www.nextbridge.ca



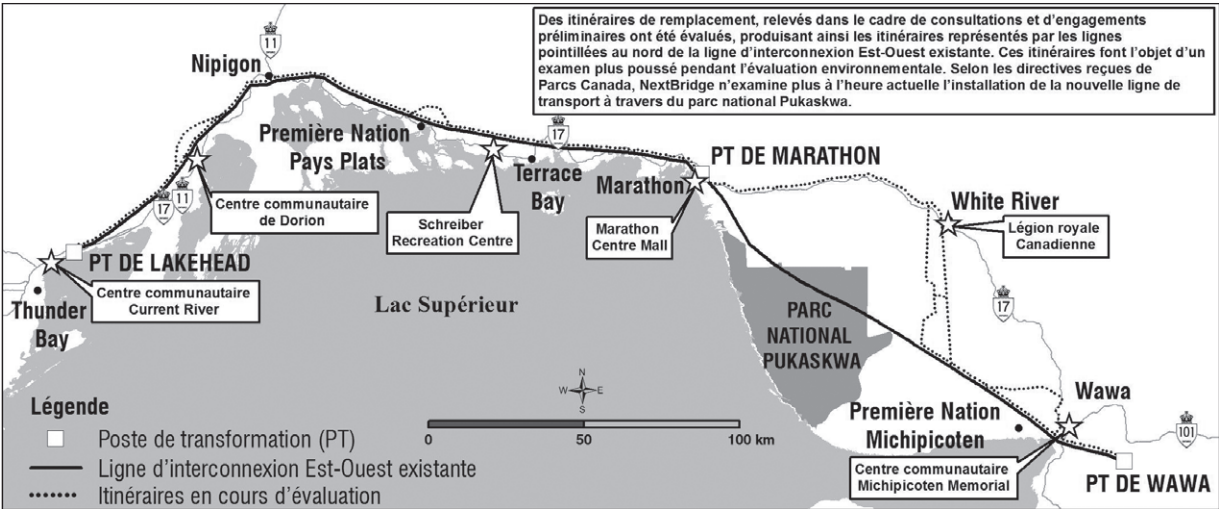
All personal information in a submission – such as name, address, telephone number and property location – is collected, maintained and disclosed by the Ministry of the Environment and Climate Change for the purpose of transparency and consultation. The information is collected under the authority of the *Environmental Assessment Act* or is collected and maintained for the purpose of creating a record that is available to the general public as described in s.37 of the *Freedom of Information and Protection of Privacy Act (FIPPA)*. Personal information you submit will become part of a public record that is available to the general public unless you request that your personal information remain confidential. For more information, please contact the Ministry of the Environment and Climate Change’s Freedom of information and Privacy Coordinator at 416-327-1434.

Avis de début de l'évaluation environnementale et des journées portes ouvertes

Projet de transmission sur la nouvelle ligne d'interconnexion Est-Ouest

NextBridge Infrastructure

NextBridge Infrastructure (NextBridge) – un partenariat entre NextEra Energy Canada, Enbridge Inc., et Borealis Infrastructure – a lancé une évaluation environnementale en vertu de la *Loi sur les évaluations environnementales* afin de construire une ligne de transport à double circuit de 230 kV d'une longueur d'environ 430 km, pour relier le poste de transformation (PT) de Wawa au PT de Lakehead, situé dans la municipalité de Shuniah près de Thunder Bay, avec une connexion au PT de Marathon. La nouvelle ligne d'interconnexion Est-Ouest sera généralement parallèle à un corridor de ligne de transport à double circuit de 230 kV existante (la ligne d'interconnexion Est-Ouest existante), mais en évitant les caractéristiques sensibles traversées par la ligne existante. Les itinéraires évalués sont illustrés sur la carte ci-dessous.



Ontario Power Authority (OPA), l'organisme provincial chargé de la planification à long terme de l'électricité, a déterminé que l'expansion du système de transport d'électricité entre Wawa et Thunder Bay était nécessaire pour maintenir un approvisionnement en électricité à long terme stable vers le nord-ouest de l'Ontario. On s'attend à ce que les activités industrielles ayant cours dans le nord-ouest de l'Ontario, en particulier dans le secteur minier, entraînent une croissance de la demande en électricité au cours des dix prochaines années. En plus des changements à l'approvisionnement en électricité dans la région, OPA a établi les besoins en matière d'approvisionnement pour le nord-ouest, auxquels le transport ou la génération supplémentaire d'électricité permettront de répondre. OPA a étudié ces solutions et a recommandé l'expansion de la ligne d'interconnexion Est-Ouest en se basant sur des critères techniques, économiques, et autres. La ligne d'interconnexion Est-Ouest a été incluse comme projet prioritaire dans le Plan énergétique à long terme du gouvernement de l'Ontario pour 2010. La mise en service pourrait avoir lieu lors du premier semestre de 2018.

Le document de mandat proposé a été soumis au Ministère de l'Environnement et de l'Action en matière de changement climatique le 28 février 2014. Ce document a été modifié en réponse aux commentaires des intervenants et soumis à nouveau le 22 mai 2014. Le ministre de l'Environnement devrait approuver le mandat proposé. En anticipation de l'approbation du mandat, NextBridge a amorcé la collecte de données pour l'évaluation environnementale et tiendra des journées portes ouvertes pour appuyer celle-ci, comme l'indique le présent avis. L'évaluation environnementale sera effectuée conformément au mandat approuvé et aux exigences de la *Loi sur les évaluations environnementales*.

Une version préliminaire de l'évaluation environnementale sera publiée à des fins d'examen et de formulation de commentaires. L'évaluation environnementale sera alors mise à jour selon les besoins et soumise au Ministère de l'Environnement et de l'Action en matière de changement climatique à des fins d'examen, ce qui comprendra une composante supplémentaire d'examen public. Un avis sera fourni pour l'examen de la version préliminaire de l'évaluation environnementale et l'examen associé à la soumission de l'évaluation environnementale au Ministère de l'Environnement et de l'Action en matière de changement climatique. Un avis sera fourni pour indiquer quand et comment la version préliminaire et la version finale de l'évaluation environnementale pourront être examinées.

Conformément à l'obligation de consulter les intervenants autochtones déléguée à NextBridge par la Couronne, les communautés des Premières Nations et métisses seront consultées quant à l'itinéraire et l'évaluation environnementale.

Deuxième ronde de journées portes ouvertes

Une participation active au processus d'évaluation environnementale est encouragée : n'hésitez pas à transmettre des questions et des commentaires au personnel du projet et à assister aux journées portes ouvertes du projet. Des occasions de consultation, telles que des journées portes ouvertes, seront tenues tout au long de l'évaluation environnementale. Elles seront annoncées dans des envois postaux, des avis dans les journaux et des avis publics sur www.nextbridge.ca.

La première ronde de journées portes ouvertes a eu lieu pendant l'élaboration du mandat. Deux autres rondes de journées portes ouvertes sont prévues pour l'évaluation environnementale. La deuxième ronde devrait avoir lieu pendant la semaine du 18 août 2014. Cette ronde fournira l'occasion de se renseigner sur le projet, les processus d'évaluation environnementale et d'autorisation de construire, les résultats des études contextuelles et des études qui seront effectuées pendant l'évaluation environnementale, les facteurs relatifs à l'itinéraire et les décisions prises jusqu'à maintenant, les questions relatives au terrain et aux propriétés, et les étapes à venir du processus d'évaluation environnementale.

La deuxième ronde de journées portes ouvertes aura lieu les dates suivantes :

18 août	19 août	20 août	21 août	22 août	23 août
De 16 h à 20 h	De 16 h à 20 h	De 16 h à 20 h	De 16 h à 20 h	De 16 h à 20 h	De 10 h à 14 h
Thunder Bay	Dorion	Schreiber	Marathon	White River	Wawa
Centre communautaire Current River	Centre communautaire de Dorion	Schreiber Recreation Centre	(Centre Mall entrée de la Banque Scotia)	Légion royale canadienne	(le dîner sera fourni)
450, avenue Dewe	175 Dorion Loop Rd.	100, rue Langworthy	2 Hemlo Dr.	108, rue Winnipeg	Centre communautaire Michipicoten Memorial
					3 Chris Simon Dr.

Veuillez noter que de légers rafraîchissements seront disponibles à toutes les journées portes ouvertes. Un dîner léger sera fourni lors de la journée portes ouvertes de Wawa, car elle aura lieu un samedi.

Les renseignements présentés lors des journées portes ouvertes seront disponibles sur www.nextbridge.ca à des fins d'examen et de commentaire.

Pour obtenir de plus amples renseignements sur la proposition de projet, veuillez prendre contact avec :
Michael Power, directeur de projet, NextBridge Infrastructure
390, rue Bay, bureau 1720, Toronto (Ontario) M5H 2Y2
Téléphone : 1 888 767-3006
Courriel : info@nextbridge.ca
Télécopieur : 416 364-2533
www.nextbridge.ca



Tous les renseignements personnels inclus dans une soumission, tels que le nom, l'adresse, le numéro de téléphone et l'emplacement de la propriété, sont recueillis, conservés et divulgués par le Ministère de l'Environnement et de l'Action en matière de changement climatique à des fins de transparence et de consultation. Ces renseignements sont recueillis en vertu de la *Loi sur l'accès à l'information et la protection de la vie privée*. Les renseignements personnels seront conservés dans le but de créer un dossier qui sera mis à la disposition du grand public, tel que décrit dans l'article 37 de la *Loi sur l'accès à l'information et la protection de la vie privée*. Les renseignements personnels feront partie d'un dossier public qui sera à la disposition du grand public, sauf si vous demandez qu'ils soient tenus confidentiels. Pour obtenir de plus amples informations, veuillez prendre contact avec la coordonnatrice ou le coordonnateur de l'accès à l'information et de la protection de la vie privée du Ministère de l'Environnement et de l'Action en matière de changement climatique au 416 327-1434.

Attachments to NextBridge Monthly Report

Schedule B

Open House materials



Purpose of the Open House

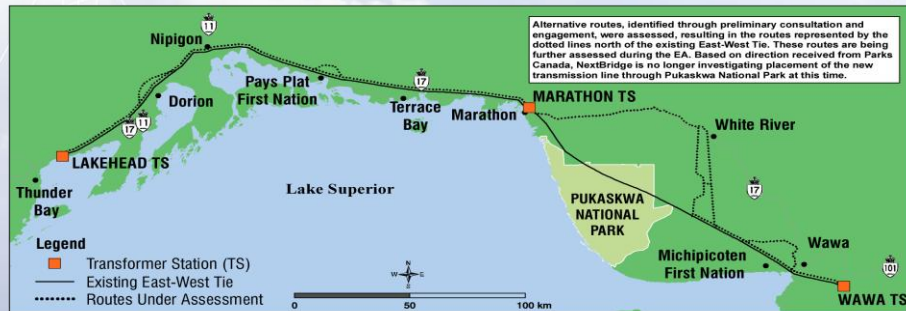
We're here to provide you with information and listen to your comments and questions about:

- Project Overview
- Environmental Assessment and Leave to Construct Processes
- Ongoing Field Studies
- Alternative Route Evaluation
- First Nations and Métis Community Engagement
- Proposed Towers
- Land and Property Matters
- Overview of the Next Steps in the Process

NEXTBRIDGE
INFRASTRUCTURE

East-West Tie Transmission Project Overview

The Project is to consist of a new, approximately 430 km double-circuit 230 kilovolt (kV) transmission line that extends from the Wawa Transformer Station (TS) to the Lakehead TS in Shuniah with a connection between these points at the Marathon TS. Hydro One Networks Inc. will be responsible for modifying each TS to accommodate the new line.



NEXTBRIDGE
INFRASTRUCTURE

East-West Tie Transmission Project Overview

Key Project Components Include:

- Right-of-way (cleared area) width of approximately 56 m
 - This is in addition to the right-of-way for the existing East-West Tie
 - Discussions are ongoing regarding joint use of the existing right-of-way and on-right-of-way roads
 - Additional space may be required for the following:
 - Angles in the route alignment
 - Crossing of the existing East-West Tie or other high-voltage lines in the area
 - General construction access
 - Temporary working spaces and laydown areas
 - Access roads
 - Access over steep or challenging terrain
 - Approximately 1,100 towers
 - Typical tower height of approximately 43 m
 - Typical span length (space between towers) of approximately 400 m
- The new line, in conjunction with the existing East-West Tie, is anticipated to provide a total eastbound and westbound transfer capability of 650 megawatts while respecting all applicable reliability standards.
 - The new East-West Tie is expected to be in service in the first half of 2018.

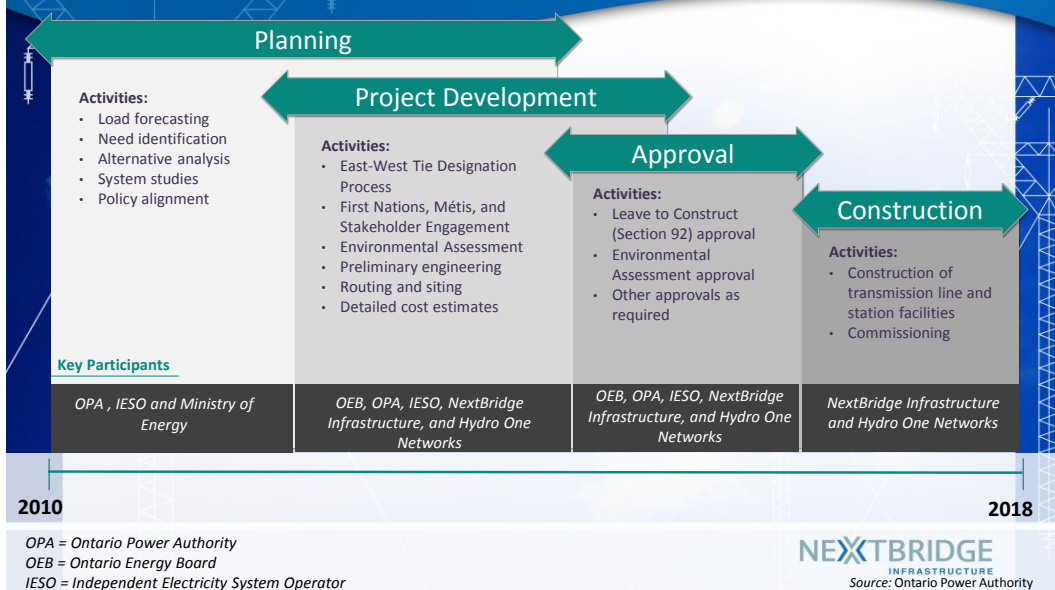
NEXTBRIDGE
INFRASTRUCTURE

Why We're Here? The Scope of the Project

- The Ontario Energy Board awarded NextBridge the privilege to develop the East-West Tie Project. Development refers to completing the work required to submit a Leave to Construct application and an Environmental Assessment.
- The Environmental Assessment and Leave to Construct applications are being completed in parallel and planned to be filed at the end of January 2015. The Ministry of the Environment and Climate Change will make a decision on the Environmental Assessment.
- The Ontario Energy Board is responsible for approving the project. When making this decision, the Ontario Energy Board may only consider the following as stated Section 96(2) of the *Ontario Energy Board Act, 1998*:
 - The interest of consumers with respect to prices and the reliability and quality of electricity service.
 - Where applicable and in a manner consistent with the policies of the Government of Ontario, the promotion of the use of renewable energy sources.

NEXTBRIDGE
INFRASTRUCTURE

Transmission Development Process



Project Rationale

The Ontario Power Authority (OPA), the provincial agency responsible for long-term electricity planning, identified the expansion of the transmission system between Wawa and Thunder Bay in order to maintain a reliable, long-term supply of electricity to northwestern Ontario. Industrial activities in northwestern Ontario, particularly in the mining sector, are expected to drive electricity demand growth in the coming decade. Coupled with changes to the electricity supply in the area, the OPA has identified supply needs for the northwest, which can be met with additional transmission or generation. Following analysis the OPA recommended expansion of the East-West Tie based on technical, economic and other considerations. The East-West Tie was included as a priority project in the Government of Ontario's 2010 Long Term Energy Plan.

NEXTBRIDGE
INFRASTRUCTURE

Who is NextBridge?

Three strong partners in the energy sector



NextEra Energy Canada is a wholly-owned subsidiary of NextEra Energy, Inc., a leading clean energy company with revenues of more than US\$15.3 billion, more than 41,000 megawatts (MW) of generating capacity, and approximately 15,000 employees in 24 states and Canada. Florida Power & Light Company, another subsidiary of NextEra, serves approximately 4.6 million customer accounts in Florida and is one of the largest rate-regulated electric utilities in the United States.



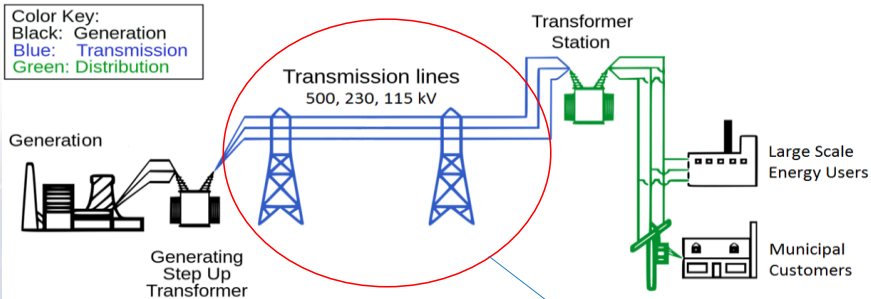
Enbridge Inc. is a North American leader in delivering energy, operating the world's longest crude oil and liquids transportation system, and has almost 1,000 MW of renewable and alternative energy generating capacity. Enbridge Inc. also owns the Montana-Alberta Tie-Line (MATL), a 300 MW, 230 kilovolt (kV) electrical transmission line allowing the movement of power between Alberta and Montana. Enbridge Inc. employs about 10,000 people, primarily in Canada and the U.S. and is ranked as one of Canada's Greenest Employers, and one of the Top 100 Companies to Work for in Canada.



Borealis Infrastructure is the infrastructure investment arm of the Ontario Municipal Employees Retirement System (OMERS), one of Canada's largest pension plans with approximately C\$60 billion in net assets. Borealis ranks as one of the world's largest and most respected infrastructure investors with a proven track record in identifying, investing and actively managing large-scale infrastructure investments on behalf of OMERS.

NEXTBRIDGE
INFRASTRUCTURE

Transmission System Overview



This is the role of the East-West Tie Project

NEXTBRIDGE
INFRASTRUCTURE

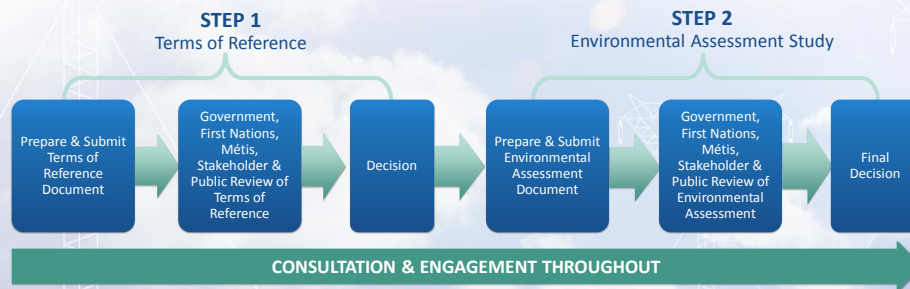
Project Timeline

2010	Ontario Power Authority identifies the project
2011	Minister of Energy asks the Ontario Energy Board to undertake a designation process to select a transmitter to develop the project
2012	Ontario Energy Board asks for bids to develop a new corridor in Ontario's northwest
August 2013	NextBridge selected as the designated transmitter
2013-2014	Terms of Reference for Environmental Assessment
2014-2015	Environmental Assessment
2014-2015	Leave to Construct Application
2016-2017	Construction
2018	In Service

NEXTBRIDGE
INFRASTRUCTURE

The Environmental Assessment Process

Overview of Environmental Assessment Process



NEXTBRIDGE
INFRASTRUCTURE

Environmental Assessment

- Environmental Assessment (EA) studies and engagement are proceeding based on anticipated approval of the Terms of Reference.
- The EA report will include the following:
 - Purpose and need for the Project based on planning process completed by the Ontario Power Authority (OPA);
 - Rationale for undertaking the Project based on planning process completed by the OPA;
 - Evaluation of alternative methods of completing the Project;
 - Description of the environmental baseline setting that could potentially be affected by the Project;
 - Identification and assessment of potential positive and negative environmental effects on baseline conditions, the development of mitigation measures to eliminate or minimize adverse effects, and the resulting net effects;
 - Documentation of the results from the engagement program;
 - Future commitments including monitoring and follow-up programs; and,
 - Technical reports completed to support the Project.

Terms of
Reference
approval by the
Minister of the
Environment and
Climate Change
is anticipated in
Summer 2014.

NEXTBRIDGE
INFRASTRUCTURE

Identification of Alternative Routes

Alternative Routes were identified using desktop data, including secondary source information (e.g. official plans, GIS mapping, data provided by government agencies and other existing literature).

Feedback received from the public Open Houses and other consultation activities, including comments received during the public review of the ToR, was also reviewed to identify Alternative Routes.

General Routing Considerations

Factor	Rule
Natural	Avoid significant natural features (i.e., Area of Natural and Scientific Interest (ANSI), Species at Risk, environmentally sensitive areas, wetlands and waterbodies), critical Landform/Vegetation (LV) types and adhere to appropriate setback requirements.
	Minimize watercourse crossings and reduce impacts to woodlands, wetlands, fish and wildlife habitats, and natural areas. Avoid areas with unsafe or hazardous slopes.
Socio-Economic	Maximize the distance from cultural heritage resources (archaeological, built heritage and cultural heritage landscapes).
	Minimize incompatibility with existing sensitive land uses (i.e., First Nation reserves, residences, agricultural lands, forest management areas, trap lines, mining claims).
	Minimize the use of private properties (i.e., use of existing ROW is favoured to minimize disruption to property owners).
	Minimize potential disturbance to adjacent residences (and traditional lands if applicable) which may be affected by construction activities.
	Minimize potential disturbance to adjacent commercial and industrial properties which may be affected by construction activities.
	Minimize potential disturbance to adjacent institutional and recreational properties which may be affected by construction activities including tourism lakes.
Technical	Maximize conformity with local land use policy.
	Minimize disruption to local traffic.
	Avoid impact to water wells, aquifer recharge areas and active mining/aggregate operations.
	Find the shortest and most direct routes.
	Minimize rail and road crossings.
	Avoid areas with an insufficient amount of construction work space or uneven terrain.
	Minimize the number of overhead electric transmission line crossings.
	Select the best topographical/terrain areas for the route (i.e., dry, flat and stable ground).

NEXTBRIDGE
INFRASTRUCTURE

Selection of Alternative Routes

As indicated in the ToR, and using the general routing considerations, Alternative Routes were selected to:

- connect Lakehead TS and Wawa TS;
- avoid federal lands; and,
- avoid provincial parks and conservation reserves.

The majority of Alternative Routes follow existing (previously disturbed) corridors, including:

- Highway 11/17;
- local roads;
- rail lines;
- pipelines;
- logging roads (and associated cutover areas); and,
- transmission lines.

In areas without existing (previously disturbed) corridors, greenfield options were also selected including a submarine route in Lake Superior.

NEXTBRIDGE
INFRASTRUCTURE

Route Evaluation Criteria and Indicators

	Evaluation Criteria	What Will Be Measured
Physical	Potential for Impact on agricultural soils	Area of agricultural fields within proposed right-of-way
	Potential to Impact Private Property	Number of private properties potentially affected within the proposed right-of-way Number of potential dwelling displacements within the proposed right-of-way Number of potential property buy-outs within the proposed right-of-way
	Potential to Impact Different Land Uses	Number of settlement areas, forest management units and mining claims crossed Area of Conservation Areas, Conservation Reserves, Provincial Parks, National Parks, mines, mining claims, aggregate pits, area of high aggregate potential, commercial and industrial designated lands within proposed right-of-way
	Potential to Impact Community Services	Number of hospitals, healthcare facilities, schools and educational institutes, community centres, waste management facilities crossed
	Potential to Impact Tourism and Recreation	Number of trails, outposts, golf courses crossed Area of campgrounds within the proposed right-of-way
Socio-Economic	Potential for Impact on Aesthetics	Number of scenic viewpoints within the right-of-way
	Potential for impact on Non-Aboriginal Archaeology, Cultural Heritage, Traditional Land and Resource Use	Length of right-of way with archaeological potential Number of known archaeological sites and cemeteries crossed Area of traditional land uses/harvest areas identified within the proposed right-of-way
	Potential for Impact on Aboriginal Archaeology, Cultural Heritage, Traditional Land and Resource Use	Length of proposed right-of-way with archaeological potential Number of archaeological sites within the proposed right-of-way Area of First Nation reserves, traditional land use/harvest areas, traditional burial grounds within the proposed right-of-way
	Potential for Impact on Way of Life	Métis mobility within the identified study area Types of teaching/ transmission programs, services and practices within the identified study area Spiritual connection to areas within the identified study area
	Potential for Impact on Harvesting	Type of harvesting activities within the identified study area Identification of key cultural species harvested and conditions required for continued harvest.

*Based on data availability.

NEXTBRIDGE
INFRASTRUCTURE

Route Evaluation Criteria and Indicators (con't)

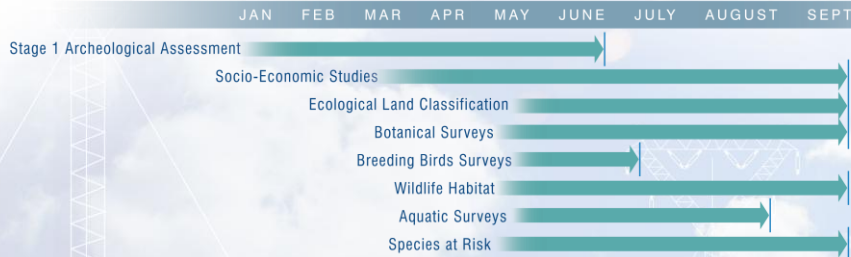
	Evaluation Criteria	What Will Be Measured
Natural Environment	Potential for Impact on Areas of Natural and Scientific Interest	Area of mapped Provincially Significant and Candidate Areas of Natural and Scientific Interest (Earth Science and Life Science) within the proposed right-of-way
	Potential for Impact on Wetlands	Area of mapped wetlands within the right-of-way including Provincially Significant Wetlands, evaluated non-provincially significant wetlands, un-evaluated wetlands
	Potential for Impact on Waterbodies and Watercourses	Number of mapped watercourses crossed Area of mapped waterbodies (not including watercourses) within the proposed right-of-way
	Potential for Impact on Forest Resources	Area of previously logged lands and seed collection lands within the proposed right-of-way
	Potential for Impact on Wildlife Habitat	Area of mapped potential significant wildlife habitat within the proposed right-of-way Number of mapped nesting sites within the proposed right-of-way
	Potential for Impact on Species at Risk	Area of mapped Woodland Caribou continuous and discontinuous habitat within the proposed right-of-way
	Potential for Impact on Community Infrastructure	Number of roads, rail lines, pipelines and airports crossed
Technical	Constructability	Overall length of proposed right-of-way Area of hazard (unstable) land crossed by the proposed right-of-way Number of transmission line corners and crossovers required Distance of existing access roads available Distance of new access roads required Favourable terrain (i.e., poor, moderate, good) Sufficient work space (i.e., poor, moderate, good)

*Based on data availability.

NEXTBRIDGE
INFRASTRUCTURE

EA Studies Underway

2014 ENVIRONMENTAL ASSESSMENT STUDIES



Additional studies will be required in 2015. Approval of the Environmental Assessment may be conditional upon the completion of these studies.

NEXTBRIDGE
INFRASTRUCTURE

EA Studies Underway – Natural Environment

The following Natural Environment Studies are underway:

Ecological Land Classification

- Ecological land classification field studies are occurring in representative areas throughout the study area.

Botanical Surveys

- Botanical surveys are taking place over three seasons. Sampling efforts are focused in areas where rare plant species are likely to occur, such as rare vegetation communities, cliffs, wetlands, and areas that may contain plant Species at Risk.

Breeding Bird Surveys

- Breeding bird surveys are used to establish estimates of bird populations and associated habitats within the study area, and for the purpose of assessing potential impacts and developing mitigation considerations for areas of breeding bird habitat.

Wildlife Habitat

- Observations of wildlife and the presence of potential significant wildlife habitat are being recorded during field investigations. Dens, tracks, scat, and other wildlife evidence is being documented.

Aquatic Surveys

- Aquatic habitat surveys are occurring within the study area and at water bodies where road crossing improvements have the potential to impact water bodies and fish habitat.
- Collected data will help determine fish habitat sensitivity and potential impacts on the water bodies. Information collected will also assist with determining suitable mitigation measures to protect fish and fish habitat.

Species at Risk

- Targeted Species at Risk surveys are being conducted, including surveys for Woodland Caribou.



Shallow Marsh surrounded by Spruce Forest along transmission corridor.



Marsh with emergent and floating vegetation surrounded by Spruce Forest.

NEXTBRIDGE
INFRASTRUCTURE

EA Studies Underway – Socio-Economic Environment

The following Socio-Economic Studies are underway:

Forestry

- Discussions with forestry companies and agencies and an inventory of forestry operations to understand potential effects to the forestry industry.

Mining and Industrial Operations

- Discussions with mining companies, key industries and agencies and an inventory of mining operations and other key industries to understand potential effects to mining and other industries.

Energy

- Inventory of existing and proposed energy generation and transmission facilities (e.g., hydroelectric, biomass, renewables, transmission/distribution lines, transformer stations, etc.). Discussions with energy developers to determine potential effects of the Project on energy development.

Land Use (Crown and Private)

- Review of municipal policy and planned development, discussions with municipal staff, inventory of community infrastructure, and the preparation of community profiles to understand potential effects on communities, Crown lands, as well as First Nation and Métis communities.

Recreation and Tourism

- Inventory of parks as well as recreation and tourism features to understand potential effects on tourism values and/or recreation activities.

Cultural Heritage

- Conduct a Stage One Archaeological Assessment for the corridor. A Stage Two Archaeological Assessment will be conducted in areas of high potential if they may be disturbed by the Project.
- Conduct a review of cultural heritage landscapes and built heritage features.



Barrick Gold – Hemlo Property



Marathon Pulp Mill

NEXTBRIDGE
INFRASTRUCTURE

Leave to Construct Approval

Leave to Construct Approval (Section 92 of the *Ontario Energy Board Act, 1998*)

In order to build the new East-West Tie, NextBridge must file a Leave to Construct application with the Ontario Energy Board.

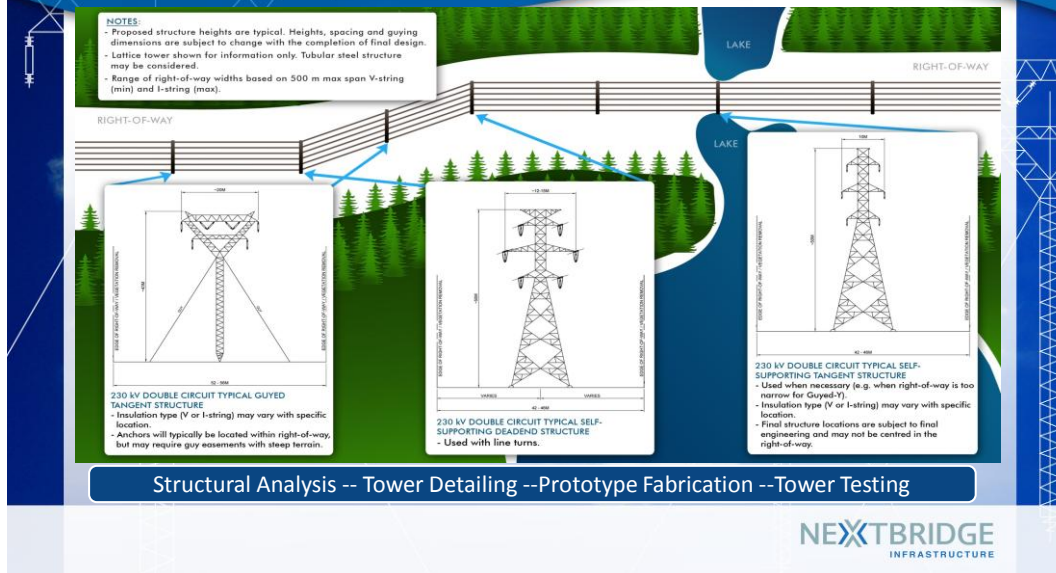
When the Ontario Energy Board receives a Leave to Construct application, it reviews the material, makes the information public and provides an opportunity for any interested parties, including First Nations and Métis communities, to provide input.

In carrying out its mandate, the Ontario Energy Board considers the impacts that the project may have upon consumers with respect to prices, as well as matters that concern the reliability and quality of electricity service. The Ontario Energy Board will approve projects they consider to be in the public interest.

NextBridge is currently contacting landowners to arrange for access to property for field surveys and assessments.

NEXTBRIDGE
INFRASTRUCTURE

Tower Design



Tower Locations

STRUCTURE SPOTTING

Structures were initially spotted on the proposed transmission line alignment with the primary goals of minimizing natural environment, socio-economic, and technical impacts.

Structure types and locations will be adjusted as necessary to:

- comply with strength limitations related to designed wind and weight span.
- avoid other project constraints applicable to each specific location.
- to meet appropriate electrical clearances.

Guyed tangent structures will be used wherever practical. In locations where environmental or topographical constraints dictate, self-supporting tangent structures may be used. All strain and deadend structure types will be self-supporting towers.

NextBridge Infrastructure's Engagement Commitment

COMMUNITY RELATIONS

NextBridge will engage stakeholders in any project it develops through honest, regular and open communication, seeking and respecting each party's input. We are committed to timely and meaningful dialogue with stakeholders, including governments, regulators, landowners, and interested members of the public, and believe that this input will be critical to a successful project that seeks to address the needs of those involved.

FIRST NATIONS AND MÉTIS RELATIONS

NextBridge Infrastructure considers the participation of First Nations and Métis communities to be an essential component of successful transmission projects in Northern Ontario. NextBridge is committed to working with First Nations and Métis communities in Ontario to provide sustainable benefits to those communities.



NEXTBRIDGE
INFRASTRUCTURE

Consultation and Engagement Activities

Planned Engagement Activities during the Environmental Assessment

- Notice of Commencement of Environmental Assessment
- Notice of Open Houses
- Continuation of municipal, key stakeholder, First Nations and Métis, agency, and landowner meetings
- Project hotline: 1-888-767-3006
- Project website: www.nextbridge.ca
- Additional newsletters
- Open House round two – alternative route evaluation and proposed mitigation measures
- Open House round three – Draft Environmental Assessment
- Draft Environmental Assessment 30-day comment period
- Notice of Submission of Environmental Assessment to Ministry of the Environment and Climate Change
- Minimum seven-week public comment period on submitted Environmental Assessment
- Posting of Ministry review of Environmental Assessment
- Notification of Minister's decision

NextBridge is available to respond to questions and discuss the project with interested parties throughout the Environmental Assessment process

NEXTBRIDGE
INFRASTRUCTURE

Consultation and Engagement Activities to Date

- NextBridge recognizes the importance of meaningful and respectful Stakeholder, First Nations and Métis engagement.
- We encourage participation at every step of this project.

During development of the Terms of Reference NextBridge has to date:

- Notified landowners along the Reference Route and alternatives and established contact;
- Contacted directly affected landowners and Crown interest holders within the proposed corridor and along the proposed preliminary preferred reference route to obtain access to lands for preliminary survey and study activities
- Developed a project contact list and notified elected officials, municipal staff, agencies and other key stakeholders;
- Placed ads in the local newspapers;
- Initiated discussions with First Nations and Métis;
- Held Open Houses;
- Prepared and distributed notices and newsletters;
- Established a website and toll-free project hotline; and,
- Attended a public Town Hall meeting in the Township of Dorion.

Aboriginal Relations Activities Underway

- In early November of last year, the Crown signed a MOU with NextBridge that assigned the Duty to Consult to NextBridge. This designates NextBridge to undertake thorough and well-documented consultation efforts with 18 Aboriginal communities identified by the Crown.
- NextBridge has engaged with all 18 communities and has provided information on the Environmental Assessment, along with other project based activities
- Along with rights-based Consultation, NextBridge has signed a commercial term sheet with 6 First Nations along the proposed route in order to provide economic participation in the line

- Fort William First Nation
- Red Rock Indian Band
- Pays Plat First Nation

- Pic Mobert First Nation
- Ojibways of Pic River
- Michipicoten First Nation

Electric and Magnetic Fields

- Electromagnetic Fields (EMFs; also called electric and magnetic fields) are invisible forces that surround electrical equipment, power cords, and power lines. You cannot see or feel EMFs.
- Every time you use electricity and electrical appliances, you are exposed to EMFs at extremely low frequencies (ELF). EMFs produced by both power lines and use of electrical appliances belong to this category.
- The levels of EMF drop off rapidly with distance from source.

HEALTH CANADA'S POSITION ON EMFS

There is no compelling scientific evidence that EMFs in living and school environments, regardless of distance from transmission lines, cause ill health such as cancer.

Health Canada (2012) states:

"When you are inside your home, the magnetic fields from high voltage power lines and transformer boxes are often weaker than those from household electrical appliances".

Based on the available weight of evidence, Health Canada *"does not consider that any precautionary measures are needed regarding daily exposures to EMFs at ELFs. There is no conclusive evidence of any harm caused by exposures at levels found in Canadian homes and schools, including those located just outside the boundaries of power line corridors".*

NEXTBRIDGE
INFRASTRUCTURE

Land & Property Matters

CURRENT ACTIVITIES

- Land Agents in the field consulting with property owners; Crown interest holders; and ministries on routes under assessment
- Right of Access Agreements are currently being sought for preliminary environmental and engineering studies
- Completion of a benchmark market valuation to establish the Fair Market Value (FMV)

NEXT STEPS

- Land Acquisition will be initiated in early fall 2014
- Land Agents will set appointments with property owners to discuss the Land Acquisition program and associated Compensation Principles
- Land Agents will be available throughout the land acquisition process to provide additional information and address any concerns that property owners may have

NEXTBRIDGE
INFRASTRUCTURE

Land & Property Matters

NextBridge will engage landowners in an open and respectful manner, with a commitment to timely, meaningful and transparent dialogue as it relates to property owner compensation.

It is NextBridge's objective to acquire land rights for the proposed East-West Tie Transmission Line Project by successfully negotiating mutually acceptable agreements with property owners. NextBridge is confident that a positive "win-win" outcome for both NextBridge and the affected property owners can be achieved by applying a set of comprehensive and fair compensation principles, thereby avoiding potentially lengthier, less flexible and less certain outcomes associated with legislated expropriation procedures.

Land Agents will be contacting affected property owners and interest holders to discuss the Compensation Principles and Forms of Agreement related to the proposed East-West Tie Transmission Line Project.

NEXTBRIDGE
INFRASTRUCTURE

Land & Property Matters

COMPENSATION AND ACQUISITION PRINCIPLES INCLUDE:

- Compensation payable to property owners and Crown interest holders
- Method for Establishing Fair Market Value
- Components of compensation including per acre value and potential incentives, injurious affection, timber loss, construction damages
- Forms of Agreement
- Reimbursement of legal and independent appraisal fees
- Mandatory Buy-Out Principle and approach

NEXTBRIDGE
INFRASTRUCTURE

Thank You!

**ON BEHALF OF THE PROJECT TEAM,
THANK YOU FOR ATTENDING THIS OPEN HOUSE.**

Please remember to fill out a comment form before you go.

Input is always welcome:

Your input is important to us. If you have any questions or concerns, or if you require further information regarding this project, please contact:

Michael Power, Project Director
NextBridge Infrastructure
Email: info@nextbridge.ca
Project Hotline: 1-888-767-3006

Be sure to visit the project website for updates:

www.nextbridge.ca

NEXTBRIDGE
INFRASTRUCTURE

Frequently Asked Questions

EAST-WEST TIE TRANSMISSION PROJECT

Connecting Ontario's Northwest

August 2014

What's Inside? Answers to Frequently Asked Questions On:

- NextBridge Infrastructure and the East-West Tie Project
- Electricity in Northern Ontario
- Land issues
- Routing
- Project approval process
- Health and safety
- Environment
- Building and operating a transmission line
- How you can have your say

About NextBridge Infrastructure and the East-West Tie Transmission Project

Who is NextBridge Infrastructure?

NextBridge Infrastructure (NextBridge) brings together the extensive resources of its three corporate partners - NextEra Energy Canada, ULC, Enbridge Inc. and Borealis Infrastructure - in our plan for development, financing, construction, operation, and maintenance of the project, together with a well-aligned interest in owning and operating the new East-West Tie (EWT) over the course of its life.

NextBridge was chosen to develop this project through a competitive bid process. We are committed to increasing the competitiveness and cost effectiveness of providing electricity transmission service to the ratepayers of Ontario.

NextBridge is committed to timely and meaningful dialogue with governments, First Nations and Métis, regulators, stakeholders, and landowners, and believe that this input will be critical to a successful project that seeks to address the needs of those involved.

What is being proposed?

The project will consist of a double-circuit 230 kilovolt (kV) transmission line generally paralleling the existing double-circuit 230 kV transmission corridor connecting the Wawa Transformer Station (TS) to the Lakehead TS near Thunder Bay. The length of the line is currently anticipated to be approximately 430 km. For some sections of the corridor, route alternatives are being considered. The final length of the line will depend on which route alternatives, if any, are selected. The targeted in-service date is the first half of 2018.

Electricity in Northern Ontario

Why do we need a new transmission line?

Industrial activities in northwestern Ontario, particularly in the mining sector, are expected to drive strong electricity demand growth in the coming decade. Coupled with changes in the region's supply situation, the Ontario Power Authority (OPA) forecasts a need for new supply to meet demand in northwestern Ontario.

Why this project?

The OPA, the agency responsible for long-term electricity planning in the province, has recommended the new East-West Tie to ensure the long-term reliability of the electricity supply in northwestern Ontario, and has specified the timing and scope of this project. Industrial activities in northwestern Ontario, particularly in the mining sector, are expected to drive strong electricity demand growth in the coming decade. Coupled with changes in the region's supply situation, the OPA forecasts a need for new supply to meet demand in northwestern Ontario. The identified supply needs can be met with additional transmission or generation. The OPA analyzed these alternatives and recommended expansion of the East-West Tie based on technical, economic, and other considerations.

What are the benefits to northern Ontario?

The key benefits include:

- Providing needed electricity to ensure that future economic development in northwest Ontario can proceed;
- Creating employment opportunities during construction; and
- Enhancing the power system in northwestern Ontario by improving efficiency, flexibility and reliability.

Land Questions

How wide is the Right-of-Way (RoW)?

The proposed width of the RoW for the new line is typically 56 m (approx. 184 ft.). In some areas, temporary work space may also be required for activities such as materials staging, wire stringing, communication repeater sites, and general construction access. Temporary work space requirements are variable depending on need. In locations where the distance between towers is very long, additional RoW width may be required to allow for conductor movement.

NextBridge will ensure that all code required clearances to existing transmission and distribution line are met and that there is enough room in between our line and any line in the vicinity to safely and reliably construct, maintain, and operate all lines present.

Will the existing RoW have to be expanded to accommodate the new line?

Due to safety and reliability concerns, the East-West Tie Project towers won't fit within the existing Hydro One RoW, thus, a new RoW is needed. It is generally expected that a new RoW, adjacent to the existing Hydro One RoW, will have less environmental impact than new "greenfield" RoW located away from the existing corridor.

Will access to private lands be needed?

Access to private lands will be required for environmental studies, surveying, geotechnical work, clearing, road work, construction, inspection, and maintenance. NextBridge will discuss access to private lands with directly affected landowners and tenants.

Will land rights be required?

NextBridge will seek land rights for the footprint of the project including RoW, temporary workspace, stockpiles, additional lands for laydown areas and access requirements, on both Crown and private land for the construction, operations and maintenance of the line.

What are your proposed forms of agreement?

NextBridge will seek Clearances for Preliminary EWT Transmission Line Surveying (Right of Access Agreements) for the purposes of conducting initial investigative studies including but not limited to geotechnical, soil, environmental, historical and archaeological surveys. NextBridge does not anticipate any damages will result from these activities. However, in the event damages occur as a result of these activities, a Land Agent will meet with landowners to review and negotiate compensation, if required.

NextBridge will seek an Option Agreement for either applicable land rights for an easement interest; or mandatory total buyout land purchases where primary residences, farm buildings, and/or commercial or industrial buildings are located within the EWT Transmission Line Project ROW. This Option Agreement will grant NextBridge access to the lands for the purposes of initial field studies and with the sole and exclusive option to acquire an easement interest or a fee simple interest (mandatory total buyout) in the lands. A Grant of Easement or Fee Simple Purchase and Sale Agreement (mandatory total buyout) will be attached to the Option Agreement. The term of the option will be for a period of two years from the date of execution of the Option Agreement.

The option will be exercised once NextBridge has received the Ontario Energy Board's Section 92 Leave to Construct Approval and Environmental Assessment Approval for the proposed EWT Transmission Line Project from the Ontario Ministry of Environment. The balance of compensation due under the terms of the Option Agreement will be paid at the time the option is exercised.

How do you assess the value of land?

The generally accepted basis for the establishment of fair compensation relies upon the use of the Fair Market Value (FMV) of the lands. The FMV has been established by a benchmark market data valuation that analyzed recent land transactions in close proximity to the project area. This valuation was completed by an appraisal firm, a member of the Accredited Appraiser Canadian Institute (AACI) with a designation from the Appraisal Institute of Canada.

How will I be compensated?

NextBridge's Offer will value all easement interests based upon 75% of the appraised fair market value of the total acreage over which the intended easement applies.

Property owners will receive payment for merchantable timber that is removed from the proposed transmission line RoW located on their property. The owner will receive, at the time of exercise of the Option for Easement, consideration for the merchantable timber payment equivalent to that which an owner could expect to receive from a buyer of forest products for the trees on the stump based on highest and best use. NOTE: If property owners elect to retain the merchantable timber, the value of the trees will be deducted from the compensation Offer from the easement settlement between NextBridge and the landowner.

Compensation for injurious affection will be provided only when reductions in market value of the remaining lands are incurred as a result of construction and operation of the proposed EWT Transmission Line ROW.

Land Agents will be contacting affected property owners, to discuss the fair market value related to the proposed EWT Transmission Line Project and provide a formal Offer of Compensation and Option Agreement. NextBridge will provide property owners with a formal Offer of Compensation.

What if my land is damaged?

NextBridge commits to compensating property owners for all damages that arise out of the operations of NextBridge, including the proposed EWT Transmission Line RoW construction, operation and maintenance activities. The types of construction damages could include but are not limited to: damage to tile drains, crop loss, rutting of laneways, fence or gate damage, and removal of danger trees located outside of the proposed RoW limits. Property owners who grant NextBridge easement interests will be contractually indemnified from all liabilities, damages, claims, suits and actions arising out of

NextBridge's construction activities and the operation and maintenance of the EWT Transmission Line.

What if primary residences are located within the ROW?

If primary residences, farm buildings, and/or commercial/industrial buildings are located within the Project corridor, NextBridge will offer a one-time option to either acquire the landowner's entire property parcel on which the corridor is situated or to acquire only the portion of the property that is on the corridor and provide compensation for the loss of the primary residence or buildings, including reasonable relocation costs.

The fair market value of the property will be determined by a formal appraisal completed by an accredited AACI appraiser, in accordance with the provisions of the Expropriations Act. The landowner will be given the option to select an Accredited Appraiser (AACI) to complete the appraisal of his/her property. They will be reimbursed for the cost of the appraisal up to \$7500. An assessment by an accredited AACI appraiser will also be obtained for the establishment of the proper apportionment for the land value component and associated primary residences, recreational cabins or cottages, farm buildings, and/or commercial or industrial buildings that are located within the proposed EWT Transmission Line ROW.

What happens if I don't agree with the Offer?

NextBridge's preference is to reach mutually acceptable arrangements with property owners. Adoption and application of compensation principles provide real value for timely settlements and otherwise avoid potentially lengthier, less flexible and less certain outcomes associated with legislated expropriation procedures.

NextBridge also recognizes that in some cases, mutually acceptable resolutions with affected landowners may not always be possible. In these circumstances, NextBridge will rely upon the legislated expropriation process and an application will be filed with the Ontario Energy Board to seek expropriation authority pursuant to Section 99 of the Ontario Energy Board Act 1998. In such circumstances, a revised compensation Offer will be provided to the Property Owner pursuant to Section 25 of the Expropriations Act.

Mining Claims, Mining Licences of Occupation, and Mining Leases

NextBridge will be consulting with the Ministry of Northern Development and Mines to determine if Mining Claims, Mining Licenses of Occupation or Mining Leases are current and valid and if any compensation is due to eligible Claims holders.

Routing

How were the Reference Route and Alternative Routes selected?

A Reference Route was submitted after a review of potential routes based on environmental, socio-economic, technical and cost criteria, during the 2012/2013 competitive bid process conducted by the Ontario Energy Board (OEB) to designate the party that would develop the EWT Project.

Alternative routes were also developed for the Reference Route to avoid specific federal lands, including two First Nation Reserves and Pukaskwa National Park. The Reference Route generally parallels the existing Hydro One EWT corridor.

What criteria are being considered when identifying Alternative Routes?

Three main types of criteria are being used to identify alternative routes. These are:

1. Environmental
General criteria includes avoiding features such as wetlands, waterbodies, wildlife and species at risk and associated habitat, and protected areas.
2. Socio-economic
Includes criteria that avoids features such as residences, Aboriginal and traditional land uses, cultural heritage and historical resources, as well as commercial and industrial developments and other infrastructure.
3. Technical and Cost
Includes considerations such as the overall length of the project, number of infrastructure corridors crossed (which can cause security issues), angles or corners along the transmission line which require larger and more specialized tower structures as well as larger permanent land area, and avoiding rugged topography which may be challenging to access.

When is NextBridge going to assess the Alternative Routes?

NextBridge is currently conducting an alternative route assessment of potential route alternatives and refinements by comparing routes to a set of criteria and indicators submitted to the Ministry of Environment (MOE) in the Terms of Reference (ToR) for the Project. The objective when assessing routes is to identify a technically feasible route with the least physical, socio-economic, and natural potential negative impacts.

How are Alternative Routes and Route Refinements identified?

Alternative routes and route refinements are being identified using the following means:

1. identifying linear infrastructure in the EWT Project area between Shuniah, Marathon and Wawa;
2. desktop data;
3. orthophotographs;
4. information from Aboriginal communities regarding traditional land uses;
5. proposals by interested parties;
6. data provided by government agencies and other existing literature; and
7. feedback received through public engagement activities.

Once alternative routes and route refinements are identified, an analysis takes place that involves comparing the alternative routes to the Reference Route. This analysis utilizes the criteria and indicators that were submitted in the Terms of Reference, and determines which route will likely have the least potential for adverse physical, socio-economic, natural and technical effects, while meeting the requirements established by NextBridge and regulatory bodies. The criteria noted in the Terms of Reference have been selected based on the type of environment located in the area, and the indicators were selected and refined based primarily on available data and feedback from stakeholders and interested parties.

Are you going through Pukaskwa National Park?

NextBridge submitted an EWT Project Description to Parks Canada on December 12, 2013. On February 11, 2014, Parks Canada responded by letter that NextBridge's request to include Pukaskwa Park in the Environmental Assessment (EA) was denied and that Parks Canada did not support the EWT Project traversing the Park. Since proceeding with the EA through the Park was not possible at the time, NextBridge made the decision to focus its development work on alternate routes and further work through the Park has ceased at this time.

Are you going through provincial parks?

The Reference Route does pass through provincial parks. We have initiated discussions with Ontario Parks (Ministry of Natural Resources) and other stakeholders related to these lands. These discussions, which were had during the Terms of Reference phase and will continue during the Environmental Assessment, will assist us in the determination of a preferred route for the new transmission line. Mitigation measures may be required to ensure that conflicts between the construction of the transmission line and recreational activities are well managed and minimized.

Are any potential routes within close proximity to a school or a daycare centre?

Routing of the transmission line will be sensitive to school locations, parks and playgrounds.

On which side of the existing corridor will the new line be built?

At this time, it is anticipated that the majority of new line will be installed on the north side of the existing East-West Tie Line. In the section of new line proposed around Pukaskwa National Park, where the *new* line deviates away from the *existing* East-West Tie Line, it is anticipated that the new line will be located on the south side of the existing power transmission infrastructure.

Has the final route been established?

NextBridge is not in a position to establish a final route at this stage of the development. Through the EA process, NextBridge has identified numerous alternatives and route refinements, both as a result of internal investigation and through interactions with external parties, and are currently under various stages of review. However, NextBridge will endeavour to select the route that will result in the least overall impacts. It is important to note that several routes are considered viable alternatives at this time; however, only one transmission line will be built.

When will the route be finalized?

NextBridge is completing an alternatives assessment and continues to assess the Reference Route, remaining alternative routes and route refinements in further detail throughout the EA data collection and Leave to Construct (LTC) development, including natural environment and socioeconomic data collection, consultation, Aboriginal engagement and engineering design.

We are also working, through public engagement activity and Aboriginal consultation, to identify additional potential routes that will be analyzed as part of the EA. Local route refinements will be considered to avoid environmental, socioeconomic and technical constraints encountered along the Reference Route based on field studies and feedback received through public, agency, and Aboriginal consultation.

NextBridge notes that additional alternatives may be identified and subsequently analyzed at any time until the filing of the EA, and commits to reasonably completing that analysis as alternatives arise. The route will remain as "proposed" until the filing of the EA and LTC, at which point it will become the recommended route.

Project Approval Processes

What approval process will be followed?

This project is subject to the Ontario *Environmental Assessment Act* and an Individual Environmental Assessment will be completed. The Environmental Assessment process is a long established process that considers the needs of the people, businesses and the natural environment in the decision making process. There are two key parts to an Individual Environmental Assessment. The Environmental Assessment Terms of Reference which outlines the scope of work to be undertaken and the preparation of the Environmental Assessment.

What is a Terms of Reference (ToR)?

A Terms of Reference (ToR) guides how an Individual Environmental Assessment will be conducted. Every project that is going through an Individual Environmental Assessment must first develop a Terms of Reference with the input and review of the public and other stakeholders.

The Proposed Terms of Reference document was submitted to the Ministry of the Environment and Climate Change on February 28, 2014. The Proposed ToR document was amended in response to stakeholder feedback and resubmitted on May 22, 2014. Approval of the Proposed ToR by the Minister of the Environment is expected. In anticipation of ToR approval, NextBridge has initiated data collection for the EA and will be holding Open Houses in support of the EA as indicated in this Notice. The EA will be carried out according to the approved ToR and the requirements of the Environmental Assessment Act.

What is a Leave to Construct (LTC) Application?

In order to build the new East-West Tie, NextBridge must file a "Leave to Construct" application with the Ontario Energy Board. When the Ontario Energy Board receives a LTC application, it reviews the material, makes the information public and provides an opportunity for interested parties, including First Nations and Métis, to provide input. The Ontario Energy Board will grant a LTC if it believes the project is in the public interest.

What is an Environmental Assessment?

An Environmental Assessment is a process to identify, assess and address through mitigation management measures, potential effects of a project on the natural (plants and animals), social (people and places) and economic (business and the economy) environments. An Environmental Assessment is required for the East-West Tie project under the Ontario *Environmental Assessment Act*. An Individual Environmental Assessment is being conducted for the new East West Tie project. The project is not a designated project pursuant to the *Canadian Environmental Assessment Act, 2012* regulations, and therefore does not require the completion of a federal environmental assessment. However, certain federal agencies may be required to assess the environmental effects of the project in relation to specific federal lands.

As part of the Environmental Assessment, NextBridge will conduct studies and meet with stakeholders to determine the existing conditions in the study area and obtain feedback on the proposed project. This information will be used as input to the determination of a preferred route for the new line as well as the identification of potential positive and negative effects of the project on the environment (the social, economic and natural environment) and measures that can be put in place to minimize potential negative impacts. Members of the community, public, landowners, stakeholder groups, First Nations and Métis, government agencies, and other interested persons are encouraged to participate in the planning process. We anticipate that a preferred route will be available to be viewed and commented on by the public during our final round of public Open Houses, which will be advertised closer to their dates.

What studies will be conducted as part of the Environmental Assessment?

Biological background work will consist of a background review and field work. The field work program will be confirmed with the Ministry of Natural Resources and may consist of:

- Aquatic habitat characterization
- Botanical Assessment

- Incidental wildlife sightings
- Forest Ecosystem Classification
- Breeding Bird Surveys
- Species at Risk Studies

Socio-economic, archaeological and cultural studies will also be conducted.

Will you consult with the community?

Consultation is an important part of the environmental assessment process. We have distributed project information, met with municipalities, Aboriginal groups, agencies, landowners and tenants starting in November 2013. Also, a round of Open Houses in six communities along the Reference and Alternative Routes was held in December 2013 to obtain input for the development of the Terms of Reference. Two (2) more rounds of Open Houses are planned to be conducted in 2014.

Consultation with the public, municipalities, First Nations and Métis, interested individuals and groups and government agencies will continue through the Environmental Assessment. The proposed consultation plan for the Environmental Assessment is one of the components that were included in the proposed Terms of Reference that has been submitted to the MOE for approval.

How will NextBridge work with First Nations and Métis peoples?

First Nations and Métis participation is an essential component of successful transmission projects in Northern Ontario. We are committed to working with First Nations and Métis in Ontario to provide sustainable benefits to those communities.

What is the Project schedule?

The following key steps are anticipated:

- November 2013 - Notice of Commencement of Terms of Reference (completed)
- December 2013 – Open Houses Round One (completed)
- February 2014 – Submission of Terms of Reference to the Minister of the Environment (completed)
- August 2014 – Notice of Commencement of the Environmental Assessment and Open Houses Round Two
- September 2014 – Initiation of Land Acquisition
- Summer 2014 – Anticipated Terms of Reference Approval
- September/October 2014 – Open Houses Round Three
- January 2015 – Environmental Assessment Submission to the Ministry of the Environment
- January 2015 – Leave to Construct Application submission to the Ontario Energy Board
- December 2015 – Anticipated Decision on the Environmental Assessment
- 2016 – 2017 – Construction
- First Half 2018 – In Service

When can I have my say?

Your input is important to us. If you have any questions or concerns, or if you require further information please send an email or call the hot line any time.

Email: info@NextBridge.ca

Project Hotline: 1-888-767-3006

You can also reach us via mail at:

Oliver Romaniuk, Project Manager

NextBridge Infrastructure

390 Bay Street, Suite 1720

Toronto, ON, M5H 2Y2 Canada

For more information, visit www.NextBridge.ca.

Health and Safety

What are Electric and Magnetic/Electromagnetic Fields? Are they harmful?

Electromagnetic Fields (EMFs), which are also called electric and magnetic fields, are invisible forces that surround electrical equipment, power cords, and power lines. You cannot see or feel EMFs. Every time you use electricity and electrical appliances, you are exposed to EMFs at extremely low frequencies (ELF). EMFs produced by both power lines and use of electrical appliances belong to this category. EMFs are strongest when close to the source. As you move away from the source, the strength of the fields fades rapidly.

There is no compelling scientific evidence that EMFs in living and school environments, regardless of distance from transmission lines, cause ill health.

Health Canada (2012) states:

“When you are inside your home, the magnetic fields from high voltage power lines and transformer boxes are often weaker than those from household electrical appliances”.

Based on the available weight of evidence, Health Canada *“does not consider that any precautionary measures are needed regarding daily exposures to EMFs at ELFs. There is no conclusive evidence of any harm caused by exposures at levels found in Canadian homes and schools, including those located just outside the boundaries of power line corridors”.*

Will the structures be able to handle the weather and ice of northwestern Ontario? What is the emergency response plan in case an extreme weather event, an ice storm, for example, brings down the lines?

The safety of communities and others near the line is a top priority for NextBridge. The EWT project will be designed and constructed to meet all regulations, standards, and codes, which have been developed with a view to ensuring public safety. In recognition of the unique climate associated with the project location, NextBridge has commissioned an independent weather study which has identified an area on the line where there is a higher potential for ice accretion. NextBridge is incorporating this information into line design. As part of the development of the East-West Tie project, NextBridge will develop Emergency Response Plans to respond to events such as extreme weather situations and other emergency scenarios. These plans will be coordinated with local municipal authorities including fire and police departments.

Environment

What kind of environmental impacts might be associated with this project, and how will they be addressed?

Before the East-West Tie Project can be constructed, the proposal will undergo a rigorous environmental assessment process. The process will require NextBridge to include, among other things, proposed measures to appropriately mitigate the potential impacts on the environment while constructing, operating and maintaining the transmission line. These mitigation measures will incorporate input from consultation with affected community members, First Nations and Métis, landowners, tenants, and stakeholders along proposed routes.

NextBridge will endeavour to select the route with the least overall potential impacts. We will consider factors such as hunting, trap lines, gathering activities, bird nesting sites, waterways, tourism, agricultural operations, environmental features, recreational uses, and impacts to residents and businesses.

Building and Operating a Transmission Line

How many jobs will be created locally?

The number of jobs cannot be estimated until the route is confirmed and a construction contractor is hired. NextBridge is committed to engaging qualified local individuals and contractors.

The number and type of jobs required to construct a transmission line are dependent on the method in which the transmission line is constructed, and will be detailed in the construction plan. The construction plan is being developed in preparation for the Leave to Construct Application, at which time more information will be available.

What do the towers look like?

The structure types are anticipated to be guyed “Y” lattice towers and self-supporting lattice towers. Guy wires will be large in diameter, and will be marked with high visibility plastic guy markers near the ground. Towers are planned to be typically 43 m (approx. 140 ft.) tall.

Will other uses such as trails be permitted in the new transmission corridor?

Access to RoW on public lands will not be limited by NextBridge for safe and compatible uses. Access on private land will not be restricted by NextBridge for safe and compatible uses, subject to consent of other rights holders.

What are the ground clearances below the lines? Will I be able to traverse under it with farm equipment, and/or mining equipment?

The maximum equipment height permitted to cross below our facilities that is built into our clearances is 4.15m. Adding roads or performing any work that could potentially change the elevation of the easement is possible, but will require NextBridge consent. The costs associated with facility changes due to these types of requests will be at the expense of the requestor.

Can I do anything within the RoW?

The following activities **may** be allowable, but require NextBridge consent:

Excavation of buried facilities of any kind.

A change in the existing ground elevation.

Ditches crossing the RoW, must provide crossings that meet NextBridge’s specifications and are fully permitted by the appropriate jurisdictions.

Road crossings.

Dropped curbing and median cuts of a minimum of 25 feet in width, and containing no more than 10:1 sloping, to be provided at locations designated by NextBridge.

Fencing, providing the fencing is grounded to NextBridge specifications

Overflow parking is generally permitted. NextBridge expansion and maintenance programs may require the use of a required parking space(s), thereby no longer allowing the requesting party to meet governmental parking requirements.

In some areas spraying of pesticides provided it is done in a manner so as to prevent the spray from making contact with NextBridge facilities.

Irrigation systems, provided they are constructed of a non-metallic material and do not extend beyond 4.15metres (14 feet) above grade. Sprinkler heads must be set to prohibit spray from making contact with NextBridge facilities. Above-ground

irrigation systems are not to be installed within or across NextBridge's patrol roads or access areas. Underground irrigation systems may cross patrol roads or access areas provided the system is buried a minimum depth of one foot below grade.

Access to RoW on public lands will not be limited by NextBridge for safe and compatible uses. Access on private land will not be restricted by NextBridge for safe and compatible uses, subject to consent of other rights holders.

Are there any setbacks from the existing line?

NextBridge will ensure that all code required clearances to existing transmission and distribution line are met and that there is enough room in between our line and any line in the vicinity to safely and reliably construct, maintain, and operate all lines present.

Will the guy wires be safe for trail users such as snowmobilers?

Guy wires will be covered with coloured sleeves called "guy markers" well above the snow line to make them visible to snowmobilers and others in areas where concurrent use is authorized.

Why can't they just build the transmission line underground?

Underground cabling for this length and voltage of a transmission line would be cost prohibitive and nearly impossible to engineer in some locations. Generally speaking, transmission lines such as these are rarely ever placed underground due to their complexity and considerably higher cost, as well as security and reliability considerations. Costs are usually 10 times greater than building an overhead line but would likely be more for this project given the topography and substrate (ground) the line crosses. Furthermore, underground lines often result in longer outages due to the length of time required to isolate and repair the fault. As well, greater ground disturbance is required in constructing underground facilities due to the need to blast, trench and bury the cable. NextBridge is mindful and committed to carrying out activities in a manner that promotes the least amount of environmental disruption and that is respectful to ratepayers by avoiding unreasonable costs.

What can we expect during construction?

Safety is our number one priority. During the construction phase, all efforts will be made to mitigate environmental impacts. This will include various measures to minimize the impacts of noise and traffic disruptions as appropriate and practicable. We will endeavor to communicate hours of work, traffic impacts, and road detours to stakeholders and affected people in the area in advance of the work being conducted.

Further information about what can be expected during construction will be available in a detailed construction plan once a construction contractor is hired.

How much power can the new line accommodate?

The new line, together with the existing East-West Tie line, increases the interface transfer capability from 175 MW to over 650 MW.

Will this Project bring power from southern Ontario to the north?

Power can flow in both directions along a transmission line, depending on actual system conditions. The expanded new East-West Tie will enable greater flows in both directions, including providing better access to southern Ontario resources to supply northwestern Ontario.

Will the format of my electricity bill change because of this project?

It is not expected that the format of electricity bills will change as a result of the East-West Tie Project. If approved by the Ontario Energy Board, the cost of the project would be shared by all ratepayers in the province.

Will electricity rates increase as a result of this project?

When evaluating project under the Leave to Construct process, The Ontario Energy Board considers the reliability and cost of alternatives to meet the need. The cost of new network transmission facilities are distributed amongst all Ontario rate payers.

Will there be power outages during construction?

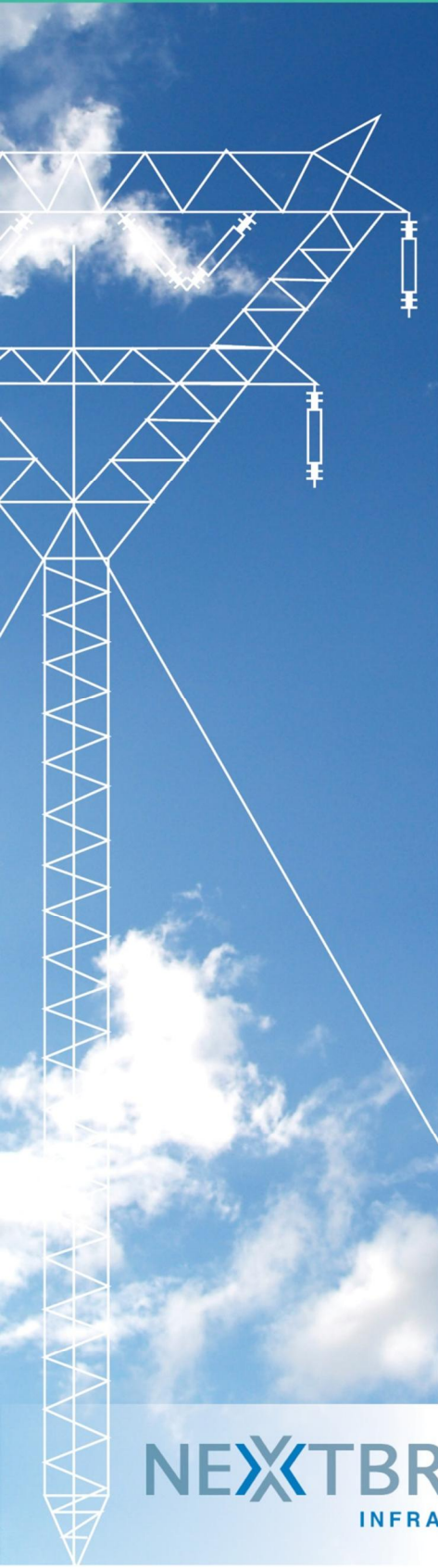
Further information about what can be expected during construction, including information on power outages, will be available in a detailed construction plan once a construction contractor is hired.

Who will own the line and the electricity flowing through it?

NextBridge will own the new transmission line, but not the electricity flowing through it. The IESO will schedule and balance flows of electricity through the line to serve customers in Ontario. The line will be connected to the Ontario bulk electricity grid at Hydro One's Lakehead Substation, Marathon Substation and Wawa Substation. NextBridge will be responsible for the safe operation and maintenance of the line.

EAST-WEST TIE TRANSMISSION PROJECT

Connecting Ontario's Northwest



The Changing Landscape for Electricity Planning in Ontario's Northwest

The Ontario Power Authority (OPA), the agency responsible for long-term electricity planning in the province, has recommended the new East-West Tie to ensure the long-term reliability of the electricity supply in northwestern Ontario, and has specified the timing and scope of this project.

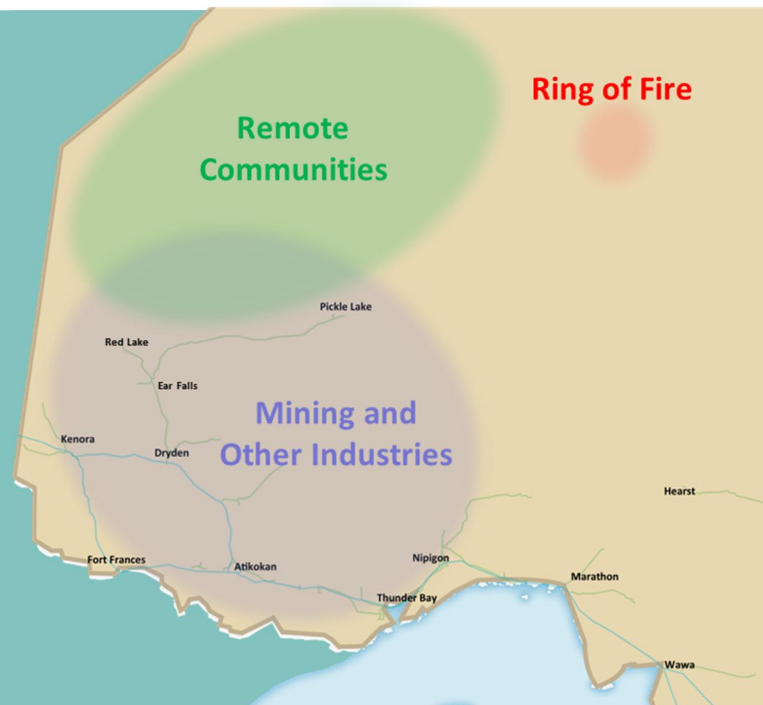
Industrial activities in northwestern Ontario, particularly in the mining sector, are expected to drive strong electricity demand growth in the coming decade. Coupled with a decrease in supply in the area, the OPA forecasts a need for around 500 megawatts (MW) of new supply in northwestern Ontario by 2018.

The identified supply needs can be met with additional transmission or generation. The OPA analyzed these alternatives and recommended expansion of the East-West Tie based on technical, economic, and other considerations.

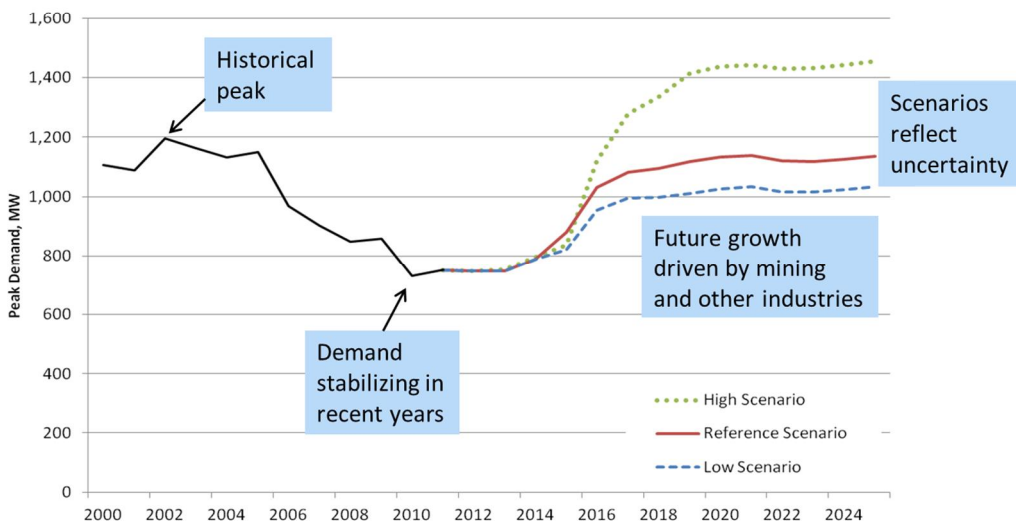
Stretching from Marathon to Manitoba, and from Minnesota to Hudson Bay, Northwestern Ontario is a vast area with unique characteristics.

Northwestern Ontario Outlook:

- Strong growth in the mining industry.
- Revitalization of pulp & paper, forestry, and other industrial sectors.
- Connection of remote communities.



Strong Demand Growth Forecast in the Northwest



At the same time, the region's electricity supply situation is changing.

Options to Meet the Northwest's Supply Need

	Transmission	Generation
Provides electricity supply for the Northwest	✓	✓
Provides supply to the rest of Ontario	✓	✓
Cost-effective	✓	
Improves system flexibility	✓	
Allows more efficient use of system	✓	

The Ontario Power Authority recommends proceeding with transmission: the East-West Tie expansion.

Additional resources can be committed in step with demand growth as it materializes, and can be utilized more effectively with the expanded East-West Tie.

How we got here

- 2010 – Government of Ontario identifies the new East-West Tie as a priority project.
- 2011 – Minister of Energy asks the Ontario Energy Board to undertake a designation process to select a transmitter to develop the project.
- 2011 – Ontario Energy Board requests a report from the Ontario Power Authority regarding the preliminary assessment of the need for the East-West Tie.
- 2011 – Ontario Power Authority need assessment recommends a new East-West Tie as the preferred alternative.
- 2011 – Independent Electricity System Operator feasibility study recommends the new double-circuit East-West Tie.
- 2012 – Ontario Energy Board directs bidders to the reference corridor and a proposed in-service date.
- 2013 – NextBridge Infrastructure selected as the designated transmitter to complete development work related to the project.
- 2013 – Ontario Power Authority updates the need assessment and continues to recommend the East-West Tie.

Keeping You Informed

Your input is very important to us, and there are many ways you can reach us. If you would like more information about this project and want to be included on the project mailing list, please contact:

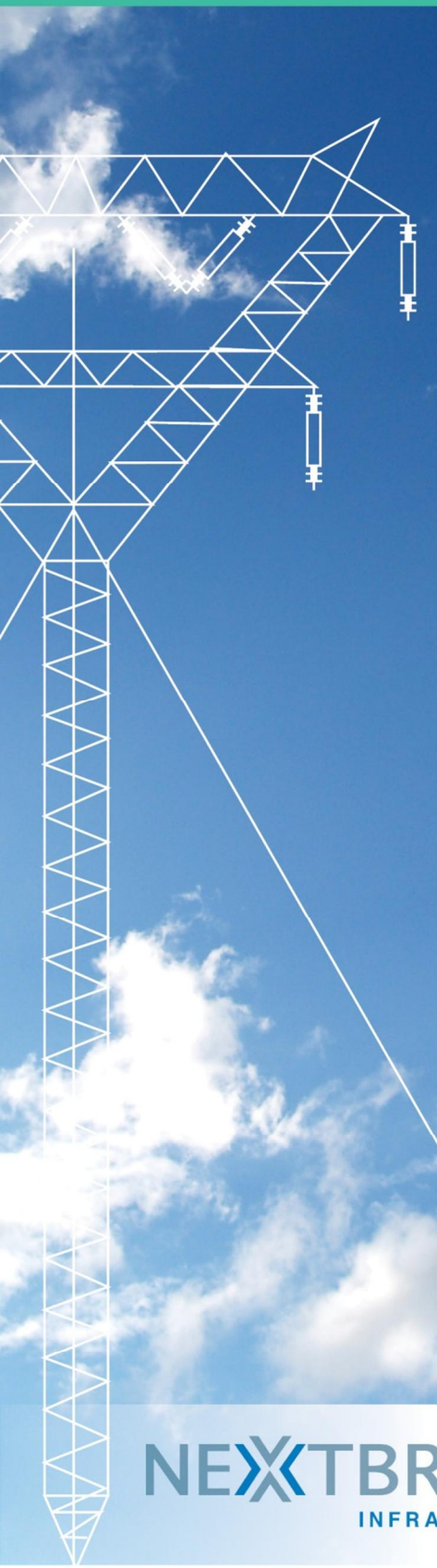
Oliver Romaniuk
Project Manager
NextBridge Infrastructure
390 Bay Street, Suite 1720
Toronto, ON
M5H 2Y2 Canada
Email: info@nextbridge.ca

Visit our project website at:
www.nextbridge.ca

Call the project hotline at:
1-888-767-3006

EAST-WEST TIE TRANSMISSION PROJECT

Connecting Ontario's Northwest



The *Environmental Assessment Act*

An Environmental Assessment is a decision-making process used to promote good environmental planning by assessing the potential effects of certain activities on the environment. In Ontario, this process is defined in the *Environmental Assessment Act* (the *Act*) and its associated regulations. The *Act* ensures that environmental issues are considered, and their effects are planned for, before development or building takes place. Under the *Act*, the definition of “environment” is not limited to the natural environment but includes social, cultural, and economic considerations.

Electricity Projects and the *Environmental Assessment Act*

Electricity projects in Ontario are subject to Ontario Regulation 116/01 under the *Environmental Assessment Act*. This regulation states that a transmission line that will transmit 115 kilovolt (kV) or more of electricity, and is greater than 2 km long is subject to the requirements of the *Act*. The East-West Tie Transmission Project proposes the construction of a 230 kV double-circuit line approximately 400 km long and is therefore subject to an Individual Environmental Assessment (EA).

Individual EA Process

An Individual EA requires that the proponent develop an EA Terms of Reference (ToR) and submit it to the Ministry of Environment (MOE) for approval. Once approved, the second phase of the EA process, the EA Study, can begin. Once submitted, the third phase, Review, commences. The final phase is the Minister's Decision.

According to the Ontario *Environmental Assessment Act*, “environment” means:

- Air, land or water,
- Plant and animal life, including human life,
- The social, economic and cultural conditions that influence the life of humans or a community,
- Any building, structure, machine or other device or thing made by humans,
- Any solid, liquid, gas, odour, heat, sound, vibration or radiation resulting directly or indirectly from human activities, or
- Any part or combination of the foregoing and the interrelationships between any two or more of them in or of Ontario.

Step 1 – Terms of Reference

A Terms of Reference (ToR) establishes the framework for the preparation and review of the EA. It outlines how the study will be conducted and helps ensure that the public, First Nations and Métis, and government agencies know what will be considered in the EA. The EA Act and associated regulations and guidelines specify the contents of the ToR and EA. NextBridge intends to prepare and submit a ToR which focuses on the Reference Route and identified alternatives.

Public consultation can assist in identification of potential issues and solutions early in the planning process. Input from interested stakeholders ensures that all pertinent information is considered in the decision making process (the EA).

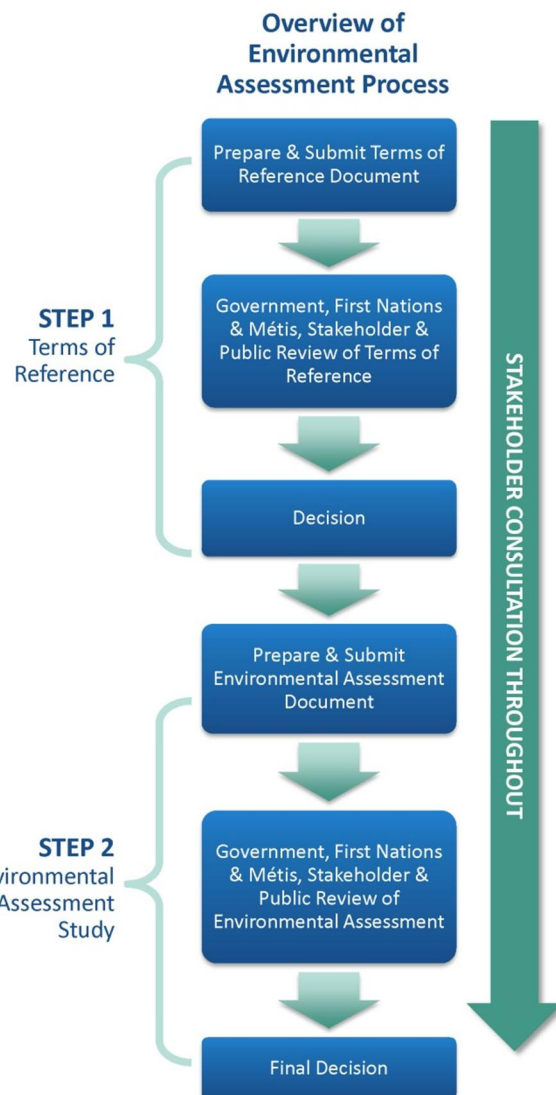
The proponent, NextBridge Infrastructure (NextBridge), must give public notice at the commencement of the ToR. The proponent also must consult with the public and document the results of the consultation during the development of the ToR. Upon submission of the ToR, public notice must once again be given. After submission, the MOE begins its own 30-day consultation process, during which time the public and other interested stakeholders may review and comment on the submitted ToR. Once the ToR is approved, the EA process will proceed in accordance with the ToR.

Step 2 – Environmental Assessment Study

The EA Study will focus on identifying potential effects, potential net effects, and potential mitigation along the route, including, but not limited to line span length; tower height; diversion around sensitive features; alignment of access roads (temporary and permanent); timing of construction; and final route configuration.

The proponent is again responsible for consulting with the public, stakeholders and First Nations and Métis people during the EA Study. Public notice must be given at the commencement of the EA Study. During the EA study, NextBridge may seek public input on the preferred design and mitigation, and other concerns.

Upon completion of the EA Study, NextBridge will issue a Notice of EA Submission and submit the document to the MOE. The Environmental Approvals Branch then coordinates a review of the EA document and solicits comments from potentially affected stakeholders over a seven-week comment period. The MOE reviews the EA and identifies any shortcomings, whether the EA fulfills the requirements of the EA Act and whether the EA was conducted in accordance with the approved ToR. The public, other stakeholders and First Nations and Métis people may again comment on the proposed undertaking, the EA, and MOE's review of the EA.



Final Decision

At the end of the final comment period, the Minister of the Environment may decide to:

- Refer all or part of the matter to the Environmental Review Tribunal for a hearing, or to another tribunal for a decision;
- Refer the EA or a particular issue to mediation;
- Approve the proposed undertaking with appropriate conditions; or
- Refuse to give approval to proceed with the proposed undertaking.

Keeping You Informed

Your input is very important to us, and there are many ways you can reach us. If you would like more information about this project and want to be included on the project mailing list, please contact:

Oliver Romaniuk
Project Manager
NextBridge Infrastructure
390 Bay Street, Suite 1720
Toronto, ON
M5H 2Y2 Canada
Email: info@nextbridge.ca

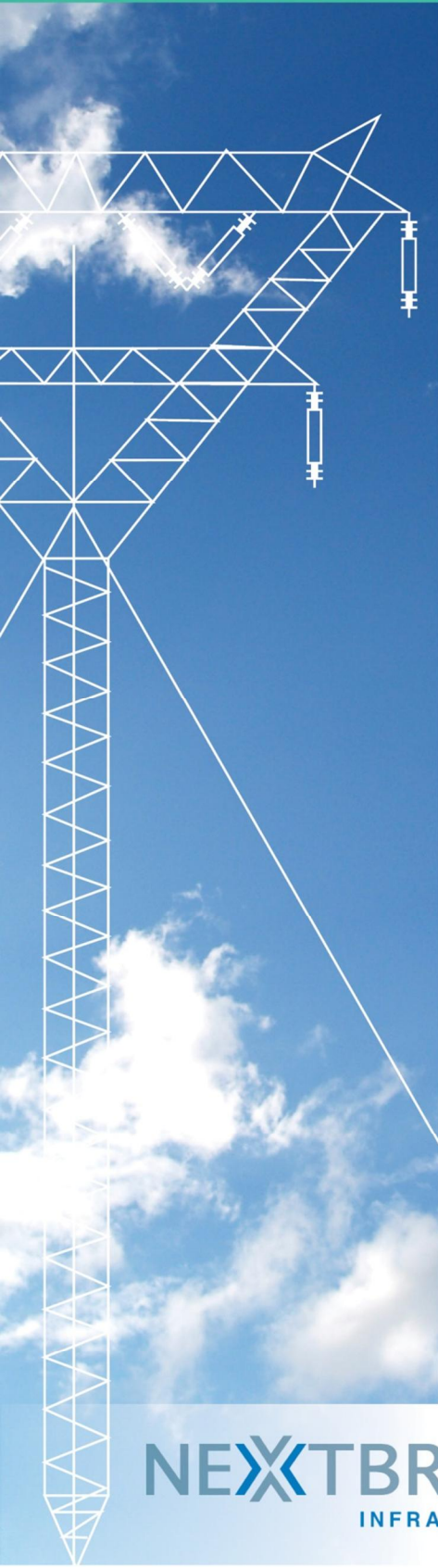
Visit our project website at:
www.nextbridge.ca

Call the project hotline at:
1-888-767-3006

Transmission Line Safety Fact Sheet

EAST-WEST TIE TRANSMISSION PROJECT

Connecting Ontario's Northwest



Transmission Line Safety

The new East-West Tie Transmission project is proposed to consist of a high-voltage 230 kilovolt (kV) transmission line supported by guyed and self-supporting steel lattice structures. The structures will be placed in a cleared right-of-way on private and public lands, and across bays, rivers and creeks. NextBridge Infrastructure (NextBridge) will take precautions to provide a safe environment within the right-of-way, such as managing vegetation growth to prevent contact with conductors (the power lines). Landowners and users of the right-of-way must also take precautions to ensure their personal safety and the safety of loved ones.

Electricity Basics

Transmission lines are common in our communities and are designed and constructed with public safety in mind. Common sense and awareness can prevent accidents from happening.

Electricity seeks the easiest and shortest path to the ground – when people or objects come too close to or touch an electrical wire, they can become a part of an electrical circuit that can result in an instant flow of electricity through them to the ground.

The flow of electricity through the human body can kill – less than one ampere of electricity can burn, severely injure or cause death.

Conductors allow electricity to easily flow in large amounts. All metals, waters, humans and even non-metallic materials (such as trees and ropes) can conduct electricity depending on moisture content and surface contamination, so caution needs to be applied whenever working, living or playing near power lines.

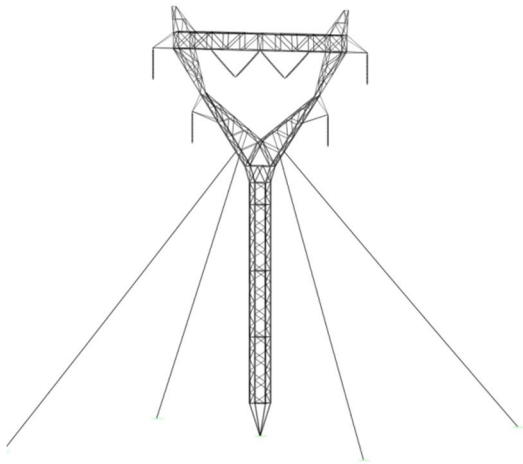
Why don't birds get hurt when they land on Transmission Lines?

If a bird is sitting happily on a line, it doesn't mean electricity is not flowing through the line. Birds can rest on energized lines because they are not in contact with the ground. When people come in contact with lines, they are also usually in contact with the ground. This contact provides another path for the electricity, through your body, to the ground. Injury, and possibly death, can be the result.

Be Electricity Smart

Electricity can jump and often does when a potential conductor like a metal ladder comes within a certain distance of a power line. For high-voltage lines, such as a 230 kV transmission line, electricity can jump, or arc, up to 4.5 metres. To be safe, keep equipment at least 7 metres away from transmission lines and stay at least 10 metres away from downed lines.

Take extra care when working near overhead power lines and be careful with ladders, cranes, or diggers.



Be Guy-Wire Smart

Guyed structures are anticipated to be used for much of the new transmission line. Users of the right-of-way, particularly for recreational purposes, should be aware of the presence of guy wires and take necessary precautions for any activity. Guy wires will be marked for visibility to a suitable height above anticipated snow levels, but users of the rights-of-way must use caution in the event markers have been damaged, vandalized, or obstructed due to drifting snow or low-visibility conditions.

Safety Checklist

- Take extra care when working near overhead power lines.
- Obey all signage and don't trespass.
- Don't climb transmission towers.
- Don't climb trees or vegetation near power lines.
- Don't fly kites or other toys in the right-of-way or allow them to come close to power lines.
- Don't construct or raise any structures or poles within the right-of-way.
- Stay away and report any unsafe conditions such as downed lines, trees that have fallen on lines, or damaged structures as soon as possible.

References

Electrical Safety Authority
www.esasafe.com

Manitoba Hydro
www.hydro.mb.ca

Keeping You Informed

Your input is very important to us, and there are many ways you can reach us. If you would like more information about this project and want to be included on the project mailing list, please contact:

Oliver Romaniuk
Project Manager
NextBridge Infrastructure
390 Bay Street, Suite 1720
Toronto, ON
M5H 2Y2 Canada
Email: info@nextbridge.ca

Visit our project website at:
www.nextbridge.ca

Call the project hotline at:
1-888-767-3006

Proposed East-West Tie Transmission Line **COMPENSATION PRINCIPLES**



Upper Canada Transmission, Inc. (UCT), operating as NextBridge Infrastructure LP, applied for and was awarded the designation to complete the development phase of work related to the East-West Tie (EWT) Transmission Line Project by the Ontario Energy Board.

NextBridge has submitted its Draft Environmental Assessment Terms of Reference for the proposed EWT Transmission Line Project to the Ministry of the Environment for review and approval. A proposed reference route is included within NextBridge's Draft Environmental Assessment Terms of Reference and indicates areas identified for potential local refinements.

Property owners and stakeholders within the proposed East-West Tie (EWT) Transmission Line Project have been notified and discussions have commenced with respect to the project. In particular, Land Agents have initiated communication with property owners who may be directly affected along the proposed reference and alternative routes, as identified within the Draft Environmental Assessment Terms of Reference.

NextBridge will engage landowners in an open and respectful manner, with a commitment to timely, meaningful and transparent dialogue as it relates to property owner compensation. The land acquisition process for the EWT Transmission Line Project and the land compensation principles outlined in this document will be coordinated in an equitable and consistent manner. To facilitate this, it is important that the land acquisition approach and associated land compensation principles be openly communicated and understood by property owners.

If you have questions or want more information

Call 1-888-767-3006

or

Email info@nextbridge.ca

Project Overview

NextBridge has completed the following activities to date in support of the development phase of the project:

- Applications to complete the development phase of the EWT Transmission Line Project were filed with the Ontario Energy Board in the spring of 2013
- NextBridge was awarded the designation and initiated the development of the project in August, 2013
- A Reference Route was presented in September, 2013 based on the Provincial Policy Statement (1.6.6.4). The Reference Route recommends paralleling the existing Hydro One 230 kV transmission line along with alternative routes that bypass Pays Plat First Nation, Michipicoten First Nation and the Pukaskwa National Park
- Draft Terms of Reference for the Environmental Assessment were submitted for public comment in January, 2014
- Draft Terms of Reference for the Environmental Assessment were submitted to the Ministry of the Environment and Climate Change for review and approval in February, 2014

Land Consultation Activities

NextBridge has initiated consultation activities with potentially affected property owners along the reference and alternative routes. Outreach has been ongoing and will continue through the course of the development phase of the project. These activities include:

- Providing initial communication to potentially affected landowners along the proposed routes and within a radius of 500m of each route by Notice of Commencement and Newsletter introducing NextBridge in October, 2013
- Seeking public input at Open Houses in support of the development of the Terms of Reference for the Environmental Assessment in December, 2013
- Ongoing outreach to potentially affected landowners and communities began in October, 2013
- Local route refinements identified by directly affected landowners and communities are being investigated
- Field activities, including geotechnical, environmental, archaeological, soil, and historical surveys in support of the reference and alternative routes have been initiated and route refinement is currently underway
- Field control surveying activities have been initiated

Land Acquisition Process

The following activities have or will be undertaken in support of the land acquisition process:

- Land agents began contacting affected landowners in March, 2014 to request initial access in order to begin preliminary environmental and engineering studies
- The Benchmark Market Data Valuation was completed in July, 2014
- Initiation of the acquisition process will begin in September, 2014

Land Acquisition Approach

NextBridge is committed to building and maintaining respectful relationships with landowners, municipalities and communities engaged in, and affected by, its projects. It is NextBridge's preference to come to a mutually acceptable agreement with all affected property owners. Our approach and principles will support and facilitate timely resolutions and fair settlements.

Overview

An important element of NextBridge's land acquisition strategy is the compensation principles that will be offered to the affected landowners for the EWT Transmission Line Right-of-Way (ROW). The following is an outline of these principles and the associated approach to be applied.

The generally accepted basis for the establishment of fair compensation relies upon the use of the fair market value (FMV) of the lands. The FMV has been established by a benchmark market data valuation that analyzed recent land transactions in close proximity to the project area. This valuation was completed by an appraisal firm, a member of the Accredited Appraiser Canadian Institute (AACI) with a designation from the Appraisal Institute of Canada.

Next Steps

Land Agents will be contacting affected property owners to discuss the fair market values associated with the proposed EWT Transmission Line Project and provide a formal Offer of Compensation and Option Agreement. The Offer of Compensation will include:

- the Option fee,
- the price per acre value and total dollars being paid for the area of the proposed transmission line right-of-way, and
- a value for merchantable timber loss within the area of the transmission line right-of-way.

Land Agents will provide an individual property sketch showing the affected property boundary, including an approximate acreage measurement for the areas affected by the proposed transmission line right-of-way, and any temporary work space area that is required for construction purposes. Each landowner will be given sufficient time to review and consider the material provided, and NextBridge will commit to a 48-hour no-contact period prior to following up with the landowner.

Following a review period of NextBridge's Offer, the next steps in the process will depend upon whether individual property owners find NextBridge's proposal acceptable or not. If the Offer is accepted, the acquisition process will proceed and the parties will finalize the transaction.

If the Offer of Compensation is accepted by the property owner, an Option Agreement will be signed between the landowner and NextBridge. The Option Fee payment of \$1,000 will be mailed to the landowner within 60 days of the date of execution of the Option Agreement.

It is NextBridge's objective to acquire land rights for the proposed EWT Transmission Line Project by successfully negotiating mutually acceptable agreements with property owners. NextBridge is confident that a positive "win-win" outcome for both NextBridge and the affected property owners can be achieved by

applying a set of comprehensive and fair compensation principles, thereby avoiding the potentially prolonged, less flexible, and less certain outcomes associated with legislated expropriation procedures.

NextBridge also recognizes that in some cases, mutually acceptable resolutions with affected landowners may not always be possible. In these circumstances, the compensation principles put forth by NextBridge will not apply, and NextBridge will rely upon the legislated expropriation process.

If the Offer time frame lapses, NextBridge will then proceed with the legislated expropriation process. An application will be filed with the Ontario Energy Board to seek expropriation authority pursuant to Section 99 of the Ontario Energy Board Act 1998. In such circumstances, a revised compensation offer will be provided to the Property Owner pursuant to Section 25 of the Expropriations Act. The Section 25 Offer will no longer include the compensation incentives originally presented in the Offer of Compensation because the early resolution objectives will no longer apply.

Forms of Land Agreements to be used by NextBridge during the Proposed EWT Transmission Line Project

NextBridge will be seeking Clearances for Preliminary EWT Transmission Line Surveying (Right of Access Agreements) for the purposes of conducting initial investigative studies, including, but not limited to, geotechnical, soil, environmental, historical, and archaeological surveys. NextBridge does not anticipate any damages will result from these activities. However, in the event damages occur as a result of these activities, a Land Agent will meet with landowners to review and negotiate compensation, if required.

NextBridge will be seeking an Option Agreement for applicable land rights (an easement or mandatory total buyout land purchases) where primary residences, farm buildings, and/or commercial or industrial buildings are located within the EWT Transmission Line Project ROW. This Option Agreement will grant NextBridge access to the lands for the purposes of initial field studies and with the sole and exclusive option to acquire an easement interest or a fee simple interest (mandatory total buyout) in the lands. The Grant of Easement or Fee Simple Purchase and Sale Agreement (mandatory total buyout) will be attached to the Option Agreement. The term of the option will be for a period of two years from the date of execution of the Option Agreement.

The Option Agreement will be exercised once NextBridge has received the Ontario Energy Board's Section 92 Leave to Construct Approval and Environmental Assessment Approval for the proposed EWT Transmission Line Project. The balance of compensation due under the terms of the Option Agreement will be paid at the time the option is exercised.

Payment Compensation Structure:

Incentives:

Property owners who accept NextBridge's offer to acquire an easement or a mandatory total buyout will be provided with the following incentive amounts:

- A \$1,000 option payment will be paid within 60 days of the execution of the Option Agreement, providing NextBridge with the option to acquire the interest easement or a mandatory total buyout, as applicable
- \$4,000 will be paid at the time the option is exercised in cases where the property owner has not required reimbursement for costs associated with independent AACI appraisal advice related to the NextBridge's Offer
- A further \$1000 dollars will be paid at the time the option is exercised as consideration to landowners for both their time and for any legal expenses associated the review and execution of the Option Agreement

Principles Applicable to the Acquisition of Easement Rights

NextBridge will exercise the easement rights of the Option for Easement Agreement after approval of the Leave to Construct Application (Section 92 of the Ontario Energy Board Act) is received. Landowners will be provided with the choice to receive the easement compensation as a lump sum payment or as periodic payments, the schedule for which will be mutually agreed upon between the property owner and NextBridge.

An annualized payment option will be offered to property owners with agricultural lands.

The annual payment will be calculated by multiplying the total value of the appraised proposed EWT Transmission Line ROW easement by the chartered bank prime lending rate as of January 1st of each year, plus one per cent, to arrive at the annual payment fee. All other applicable compensation amounts such as injurious affection, if appropriate, and incentive payments will be paid up front as a lump sum amount.

The value of the easement will be subject to reassessment every five years, and adjustments (up or down) will be made to the annual payment amount based on this update.

The annual payment obligation will be converted to a one-time lump sum payment, subject to adjustments, upon the happening of any one of a number of specific events. These events are:

- The land subject to the rights is rezoned
- The land subject to the rights is subdivided
- The land subject to the rights is sold, transferred, assigned or conveyed
- The property owner(s) dies
- NextBridge determines that it no longer requires the easement interest for its operations
- The property owner in any event requests payment of the lump sum in writing

On a case-by-case basis, NextBridge will exempt having the lump sum conversion apply when the only contemplated change in circumstance is the transfer of ownership of the underlying lands from the original owners to their immediate first-generation offspring.

NextBridge's Offer will value all easement interests based upon 75% of the appraised fair market value of the total acreage over which the intended easement applies.

Property owners will receive payment for merchantable timber that is removed from the proposed transmission line right-of-way. The value of the merchantable timber will be established on the basis of local market timber rates. NOTE: If property owners elect to retain the merchantable timber, the value of the trees will be deducted from the compensation offer from the easement settlement between NextBridge and the landowner.

Compensation for injurious affection will be provided only when reductions in market value of the remaining lands are incurred as a result of construction and operation of the proposed EWT Transmission Line ROW. If applicable, this amount will be determined by an independent appraisal process.

Other Compensation Provisions:

NextBridge commits to reimbursing property owners for reasonably incurred transaction costs (i.e. such as lawyer fees) associated with the review of applicable closing conveyance agreements.

NextBridge commits to compensating property owners for all damages that arise out of the operations of NextBridge, including the proposed EWT Transmission Line ROW construction, operation, and maintenance activities. These damages could include, but are not limited to, damage to tile drains, crop loss, rutting of laneways, fence or gate damage, and danger trees located outside of the proposed right-of-way limits.

NOTE: Property owners who grant NextBridge easement interests will be contractually indemnified from all liabilities, damages, claims, suits, and actions arising out of NextBridge's construction activities and the operation and maintenance of the EWT Transmission Line.

Principles Applicable to Mandatory Buyouts:

If primary residences, recreational cabins or cottages, farm buildings, and/or commercial or industrial buildings are located within the proposed EWT Transmission Line ROW, NextBridge will offer a one-time option to either acquire:

- the landowner's entire property parcel or primary residences, recreational cabins or cottages, farm buildings, and/or commercial or industrial buildings that are located within the new EWT Transmission Line ROW, or
- the portion of the property that is on the corridor and provide compensation for the loss of the primary residences, recreational cabins or cottages, farm buildings, and/or commercial or industrial buildings, including reasonable relocation costs.

The fair market value of the property will be determined by a formal appraisal completed by an accredited AACI appraiser, in accordance with the provisions of the Expropriations Act.

The term "property" above means fee simple ownership or other form of land tenure interest held by other means such as Crown Land Use Permits or Licenses of Occupation. Crown land will require consent or a grant of easement rights from the Ministry of Natural Resources. An assessment by an accredited AACI appraiser will also be obtained for the establishment of the proper apportionment for the land value component and

associated primary residences, recreational cabins or cottages, farm buildings, and/or commercial or industrial buildings that are located within the proposed EWT Transmission Line ROW.

Other Compensation Provisions for Mandatory Total Buyouts:

NextBridge commits to reimbursing property owners for reasonably incurred transaction costs such as lawyer fees associated with the review of applicable closing conveyancing agreements.

Where applicable, NextBridge will compensate for any reasonable, non-agricultural business loss. NextBridge will also provide compensation for equivalent reinstatement and such other similar compensation as would be provided for under the Expropriations Act.

Trapper Payments

In Ontario, Crown land is divided into registered areas called trap lines. Every trapper on Crown land is assigned a specific trap line and provided exclusive rights for the area. There may be registered trappers actively participating in fur harvesting along the proposed corridor for the EWT Transmission Line Project. NextBridge will consult with the Ministry of Natural Resources to confirm which trappers, if any, may be negatively affected by the proposed corridor. Registered active trappers will be consulted and provided compensation if impacted by the construction of the Project. This will include damage to trapper assets, general disturbance, adverse effects, and impacts to trapping operations.

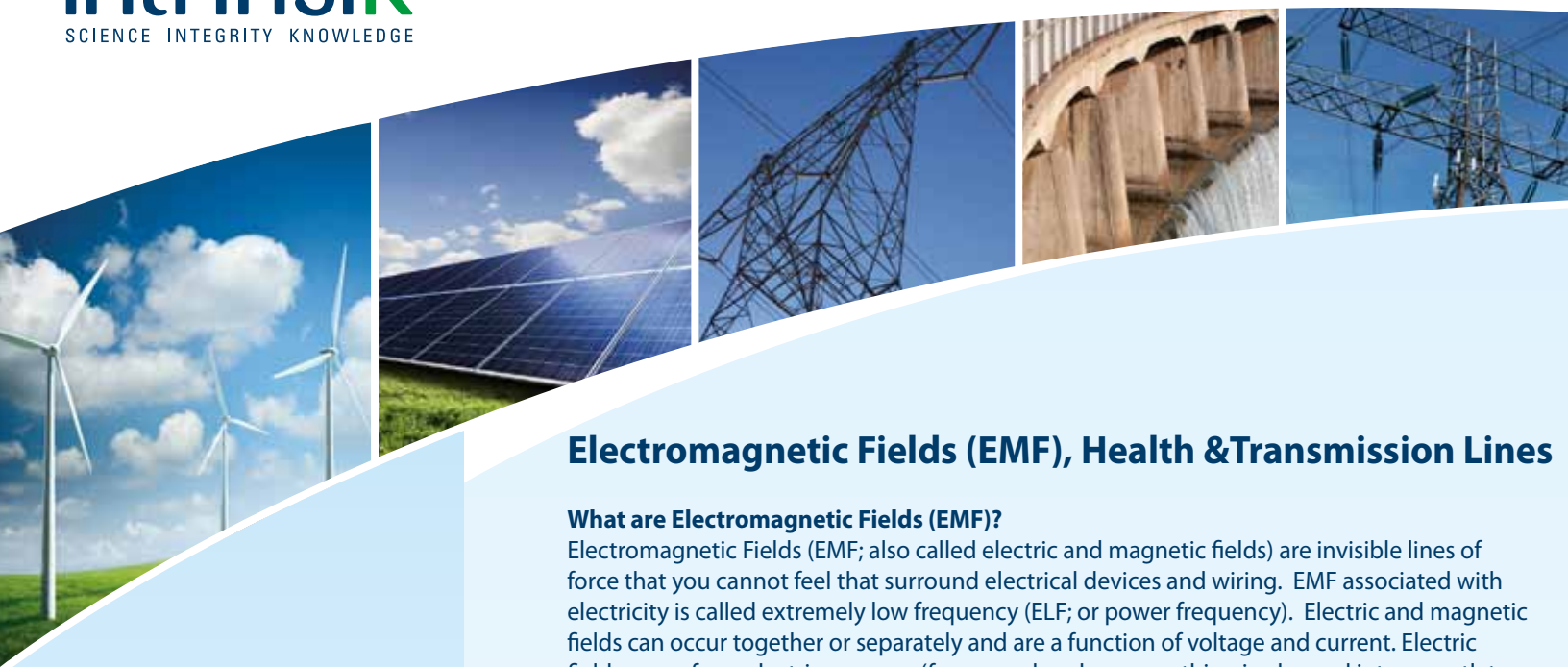
Mining Claims, Mining Licenses of Occupation, or Mining Leases

NextBridge will be consulting with the Ministry of Northern Development and Mines to determine if affected Mining Claims, Mining Licenses of Occupation or Mining Leases are current and valid and if any compensation is due to the eligible Claims holders.

Going Forward

NextBridge is looking forward to building a respectful and professional relationship with you. It is our intention and preference to come to a mutually acceptable agreement with you, and we are committed to being a good neighbour to you and in your community.

If you have questions or want more information, please call 1-888-767-3006 or email info@nextbridge.ca.



FOR MORE INFORMATION PLEASE CONTACT

Loren Knopper, Ph.D.
Senior Environmental Health Scientist
lknopper@intrinsik.com

Christopher Ollson, Ph.D.
Vice President
collson@intrinsik.com

Melissa Whitfield Aslund, Ph.D.
Environmental Health Scientist
maslund@intrinsik.com

6605 Hurontario Street
Suite 500
Mississauga, ON
L5T 0A3

Phone: 905-364-7800
Fax: 905-364-7816

Electromagnetic Fields (EMF), Health & Transmission Lines

What are Electromagnetic Fields (EMF)?

Electromagnetic Fields (EMF; also called electric and magnetic fields) are invisible lines of force that you cannot feel that surround electrical devices and wiring. EMF associated with electricity is called extremely low frequency (ELF; or power frequency). Electric and magnetic fields can occur together or separately and are a function of voltage and current. Electric fields come from electric pressure (for example, when something is plugged into an outlet but not turned on) and are commonly represented in units of volts per metre (V/m). Magnetic fields come from the movement of electric charges (when something is plugged into an outlet and turned on) and are represented by two common units: microtesla (μT) and milligauss (mG). Levels of EMF drop off rapidly with distance from the source.

EMF in Everyday Life

On a daily basis people around the world are exposed to ELF EMF as a result of using electricity in their homes, offices and schools. EMF exists around all common household electronic devices (for example: refrigerator, stove, alarm clock, lamps, household wiring). For some Canadians this also includes exposure to EMF from high voltage power lines and transformer boxes. Health Canada (2012) states:

"When you are inside your home, the magnetic fields from high voltage power lines and transformer boxes are often weaker than those from household electrical appliances".

State of Knowledge on Health Effects and EMF

Concerns about the ever-present nature of ELF EMF and possible health concerns have been raised by some in the global community. The science around EMF and possible health concerns has been extensively researched over the last 30 years. Government and medical agencies including Health Canada, the World Health Organization (WHO), the International Commission on Non-Ionizing Radiation Protection (ICNIRP), the International Agency for Research on Cancer (IARC) and the US National Institute of Health (NIH) and National Institute of Environmental Health Sciences (NIEHS) have all thoroughly reviewed the available information.

Short term exposure to EMF: At high levels EMF is known to cause stimulation in the central nervous system. The ICNIRP, a group recognized by the WHO as the international independent advisory body for non-ionizing radiation protection, established a guideline of 2000 mG for the general public (ICNIRP 2010). To put this level into context, the average magnetic field 60 m from a 230kV transmission line can be expected to be around 2 mG (NIEHS 2002).



Long term exposure to EMF: Based on the available weight of evidence, Health Canada:

"Does not consider that any precautionary measures are needed regarding daily exposures to EMFs at ELF. There is no conclusive evidence of any harm caused by exposures at levels found in Canadian homes and schools, including those located just outside the boundaries of power line corridors".

It needs to be acknowledged that based on a weak association of childhood leukemia and chronic exposure to magnetic field strength above 3-4mG, the International Agency for Research on Cancer (IARC) and WHO have categorized EMF as a Class 2B possible human carcinogen. Coffee is also a 2B carcinogen.

What does this mean? This means there is limited evidence of carcinogenicity in humans and less than sufficient evidence of carcinogenicity in experimental animals. For EMF there are no globally accepted mechanisms that would suggest that low-level exposures are involved in cancer development and animal studies have been largely negative (WHO 2007). **Thus, on balance, the WHO has stated (based on approximately 25,000 articles published over the past 30 years) that the evidence related to childhood leukemia is not strong enough to be considered causal (WHO 2012).**

In addition to childhood cancer, some people have concerns about EMF and a range of other health concerns. The WHO (2007) has stated:

"A number of other adverse health effects have been studied for possible association with ELF magnetic field exposure. These include other childhood cancers, cancers in adults, depression, suicide, cardiovascular disorders, reproductive dysfunction, developmental disorders, immunological modifications, neurobehavioural effects and neurodegenerative disease. The WHO Task Group concluded that scientific evidence supporting an association between ELF [extremely low frequency] magnetic field exposure and all of these health effects is much weaker than for childhood leukaemia. In some instances (i.e. for cardiovascular disease or breast cancer) the evidence suggests that these fields do not cause them".

Based on the available weight of evidence, Health Canada "does not consider that any precautionary measures are needed regarding daily exposures to EMFs at ELF. There is no conclusive evidence of any harm caused by exposures at levels found in Canadian homes and schools, including those located just outside the boundaries of power line corridors".

SUGGESTED READING

Health Canada. 2012. Electric and Magnetic Fields from Power Lines and Appliances. Catalogue # H13-7/70-2012E-PDF, ISBN # 978-1-100-21395-8. <http://www.hc-sc.gc.ca/hl-vs/iyh-vsv/enviro/magnet-eng.php>

International Commission on Non-Ionizing Radiation Protection (ICNIRP). 2010. ICNIRP Guidelines for Limiting Exposure to Time Varying Electric and Magnetic Fields (1 Hz – 100 KHz). Health Physics 99(6):818-836;

World Health Organization (WHO). 2012. Electromagnetic fields. <http://www.who.int/peh-emf/en/>

World Health Organization (WHO). 2007. Electromagnetic fields and public health, Exposure to extremely low frequency fields. Fact sheet N°322. <http://www.who.int/peh-emf/publications/factsheets/en/index.html>

World Health Organization (WHO). 2007. Environmental Health Criteria 238. Extremely Low Frequency Fields. ISBN 978 92 4 157238 5. http://www.who.int/peh-emf/publications/elf_ehc/en/

National Institute of Environmental Health Sciences (NIEHS), National Institutes of Health (NIH). 2002. EMF-Electric and Magnetic Fields Associated with the Use of Electric Power. Questions & Answers. http://www.niehs.nih.gov/health/materials/electric_and_magnetic_fields_associated_with_the_use_of_electric_power_questions_and_answers_english_508.pdf

Hospital for Sick Children: Electromagnetic radiation and cancer fears. http://www.hydroone.com/OurCommitment/Environment/Documents/EMF/Sick_Kids_Electromagnetic_radiation_and_cancer_fears.pdf

Landowner and Public Comments and Responses during Draft Terms of Reference Preparation

Note: Responses to questions related to need and rationale for the Project are provided by the Ontario Power Authority (OPA).

Comment	Response
Project Need and Rationale	
What is the primary purpose of the Project?	The purpose of the project is to maintain a reliable, long-term supply of electricity to the Northwest. Industrial activities in the Northwest, particularly in the mining sector, are expected to drive strong electricity demand growth in the coming decade. Coupled with changes in the region's supply situation, the OPA forecasts a need for new supply in the Northwest. The identified supply need can be met with additional transmission or generation. The OPA analyzed these alternatives and recommended expansion of the East-West Tie based on technical, economic, and other considerations.
Will we experience fewer blackouts? We were not affected by past large blackouts. Could be we affected by similar events in the future because of this Project?	Comment noted. These questions will be investigated during the EA.
Wouldn't it be easier and less expensive to connect with Manitoba?	Ontario is currently electrically connected with Manitoba. In order to meet the Northwest's resource needs with supply from Manitoba, it would be necessary to sign a power purchase agreement. The cost of imported energy and/or capacity under such an agreement would be based on terms negotiated with Manitoba. In addition, the amount of capacity required to meet the reliability need of the Northwest exceeds the current capability of the existing interconnection, and significant new transmission facilities would be required.
If the line is for mining, why isn't it being built from Nipigon to the northwest?	The line connects power from southern Ontario with the Lakehead Transformer Station (TS) near Thunder Bay. From the TS, transmission lines are already in place to link to the northwest.
How much power can the new line accommodate?	The new line, together with the existing East-West tie line, increases the interface transfer capability from 350 MW (175 MW in bad weather) to 650 MW.
If the new line/tower is damaged by weather, is there a way to re-route power?	There is an existing 230 kV transmission line in place that can provide power but power cannot be re-routed except at Transformer Stations.
If the new line parallels the existing line, what would be the distance between the tower lines?	The distance would be approximately 50 m.
Land	
How would my land be affected if it was crossed by the right-of-way?	NextBridge will seek an easement interest for the footprint of the project including right of way, temporary workspace, stockpiles, additional lands for laydown areas and access requirements, on both Crown and private land. The right of way will be approximately 52 to 56 m wide (170 to 184 ft.).

Comment	Response
	<p>Access to private lands is expected to be required for environmental studies, surveying, geotechnical work, clearing, road work, construction, inspection, and maintenance. NextBridge has the ability to Survey under the Surveys Act by licensed Surveyors (boundary survey only). All other surveys require Consent. NextBridge will discuss access to private lands with directly affected landowners and tenants.</p> <p>During the construction phase, NextBridge will mitigate construction impacts wherever practicable. This will include various measures to minimize the impacts of noise and traffic disruptions as appropriate and practicable. NextBridge will endeavor to communicate hours of work, traffic impacts, and road detours to stakeholders and affected people in the area in advance of the work being conducted.</p>
Will my property value be affected?	<p>NextBridge does not anticipate that property values will be affected in the long-term. However, NextBridge may compensate for injurious affection.</p> <p>“Injurious affection” (injury to land) occurs when it is determined that the market value of a property is reduced because of NextBridge’s use of the portion of the land for the Project. The amount of any compensation will be determined as part of an independent appraisal process.</p>
What is the relationship between Standard Land Company and NextBridge?	Standard Land Company has been engaged by NextBridge to handle a portion of the land agent activity for the development of the Terms of Reference phase of the Project.
How will the value of my property be assessed?	For each directly affected parcel of private property, a Benchmark Market Valuation will be completed to determine the fair market value on a per hectare basis. Upon completion of this valuation NextBridge will present an offer of compensation that includes compensation for the easement interest and consideration for injurious affection where applicable. Loss of timber will be assessed and appropriate compensation will be determined on a per hectare basis.
I would like fair market value if my land is directly affected.	Compensation will vary depending on several considerations including, for example, the use and location of the land parcel. A Benchmark Market Valuation will be completed to determine the fair market value on a per hectare basis. The valuation will take into consideration the highest and best use of the land, soil quality, location and comparable sales data to determine appropriate compensation along the proposed route. For easement interests in Ontario, 75% of fair market value is paid.
If my property value goes down, will my property taxes be reduced?	Property tax questions should be addressed to the Municipal Property Assessment Corporation (MPAC).
Are you seeking a route that avoids residences?	NextBridge will endeavour to select the route that will result in the least overall impacts. To identify the final route, NextBridge will be considering the valuable feedback from those potentially affected along proposed routes. During the route evaluation process, NextBridge will

Comment	Response
	consider factors such as hunting, tourism, recreational uses such as trails, agricultural operations, environmental features, and impacts to residents and businesses. It is important to note that all routes are considered viable alternatives at this time; however, only one transmission line will be built.
We have been affected by the highway widening. The transmission line will add to the issues we are already facing.	Thank you for raising this issue. It will be considered as NextBridge proceeds with the project.
What are the set-backs from homes?	NextBridge will use the boundary of the right-of-way to establish minimum setback distances. Structures will not be allowed in the right-of-way.
I would like to be contacted before anybody accesses my property.	Reasonable attempts will be made to provide notice. NextBridge will discuss access to private lands with directly affected landowners and tenants.
What types of agreements with landowners are you seeking?	NextBridge will be seeking an Option for easement agreement. In the event a fee simple interest is required, NextBridge will look to purchase the property.
Will I still be able to use the land in the right of way?	Yes, so long as it doesn't interfere from an operational or safety perspective with the line.
If I refuse to sign an easement agreement will you expropriate my land?	Leave to Construct approval allows NextBridge to expropriate land rights but NextBridge prefers to negotiate and reach a deal with landowners where possible.
If a building/structure (other than main residence) has to be removed for the right-of-way, will NextBridge replace or rebuilt it to my specifications?	The value of the building will be assessed and fair market value for the building as it stands at the time.
Will I still be able to hunt on my property? Will the project affect game movement?	Yes, you will still own the land while transferring some of the rights to it to NextBridge via the easement process. While most activities are generally still permissible on the property, caution must be exercised around the transmission line and towers in order that NextBridge's equipment is not damaged. As part of the EA process, the potential for impact on wildlife will be examined.
I want access to my property during hunting season and do not want construction to take place at that time. Is this possible?	Should your property be crossed by the proposed transmission line there are a number of considerations related to access during construction which NextBridge can't address at this time. These include the timing of construction on your property (it might not be during construction) and whether or not construction will take place during the hunting season. Many northern Ontario construction projects place a temporary hold on hunting during construction for safety considerations. This will be determined at a later date.
I would like to see efforts made to reduce the footprint of the Project.	NextBridge supports the reduction of the footprint of the project and is exploring, among other things, the opportunity to overlap cleared areas of the existing Hydro One transmission line, as well as use of the existing roads associated with the existing 230 kV transmission line.
What will happen to the wood that is cut on my property?	The use of salvageable timber from the RoW will be discussed with the landowner.
I do not want wood chipped on my property.	NextBridge will discuss what the landowner wants done with the trees and vegetation prior to clearing.

Comment	Response
I want to be compensated for marketable wood that is removed for the right-of-way on my property. How much of a tree stumpage fee will be paid?	Compensation for timber will be provided based on ownership and type of wood. An assessment will be made to determine the appropriate compensation rates.
There are trails on my property. How will they be affected?	NextBridge will make every effort to avoid the trails. Trails that fall in the RoW may still be able to be maintained.
If groups are charged a fee to use the right of way on my property as a trail, will I get some of the money?	Access along the RoW would not be permitted without the consent of the landowner. If permission is given, NextBridge will not charge a fee to use the right of way on your land as this is your private land. Elsewhere on Crown lands NextBridge also has only easement rights and thus will not be the land owner.
I'm concerned that the right-of-way will provide unwanted access to my property.	Your property is private land and can be posted no trespassing and gated if required. A gate locking protocol will be determined where access is required by you and construction crews.
I have a managed forest on my land.	If the area to be cleared for the new right-of-way is part of the managed forest, NextBridge will meet with you to discuss the implications and provide resources for you to have your plan amended.
I was planning to develop/build/improve a property along one of the proposed routes. What should I do now?	While the route has not yet been finalized or approved, you should speak with the NextBridge team and their Land Agents to discuss your proposal.
Right-of-Way, Routing and Towers	
Which side of the reference route is preferred?	<p>A preferred side of the existing transmission facility RoW has not yet been identified. Once the preferred side is chosen, there is the opportunity for minor route realignments during the EA process to accommodate identified environmental and socio-economic features and other issues.</p> <p>NextBridge will endeavour to select the route that will result in the least overall impacts. To identify the final route, NextBridge will be considering the valuable feedback from those potentially affected along the proposed routes. During the route evaluation process, NextBridge will consider factors such as hunting, tourism, recreational uses such as trails, agricultural operations, environmental features, and potential impacts to residents and businesses.</p>
Has the proposed extension of the Michipicoten First Nation land been taken into consideration in the routing alternatives?	During the preparation of the draft Terms of Reference, it was brought to the attention of NextBridge that the boundaries of the reserve lands are in the process of being changed. The proposed Terms of Reference that will be submitted to the Ministry of the Environment at the end of February, 2014 will reflect a new alternative around the First Nation that avoids crossing their lands.
I am concerned that individual landowners have less of a chance of influencing the final route compared to larger interest groups and First Nations communities.	NextBridge considers public input that is received and tries as best as reasonable to accommodate input, however, in some cases interests must be balanced to reflect the greater public interest.
When will the route be	The exact centerline of the route will be finalized through the EA process.

Comment	Response
finalized?	
How wide is the proposed right-of-way?	<p>The proposed right-of-way for the new line is approximately 52 to 56 m (approx. 170 to 184 ft.).</p> <p>The 52 to 56 m may not include additional space required where there are corners in the line, general construction access and where additional lands for access might be required subject to topography and other land features. In some areas temporary work space may also be required for activities such as materials staging. Temporary work space requirements are variable depending on need.</p>
What type of tower will be constructed?	Most towers are anticipated to be guyed “Y” lattice structures.
Where will the tower be located on my property?	Final route and location of towers have not yet been determined.
How tall are the proposed towers?	Towers are planned to be typically 43 m (approx. 140 ft.) tall. Depending on the terrain, tower heights will vary.
Will the new line connect with the existing transmission line?	The new East-West Tie will generally parallel the existing East-West Tie RoW with connections at the Lakehead Transformer Station (TS) in Shuniah (east of Thunder Bay), Marathon TS, and Wawa TS.
Did you consider an alternative route along the pipeline corridor to the north of Dorion?	Pipelines are typically not paralleled because this has been shown to cause an increase in pipeline corrosion and therefore, a large amount of cathodic protection may be required. The paralleling of the existing 230 kV line offers a number of benefits including use of existing access, corridor sharing and similar land use.
Did you consider an alternative route along the CN railway right-of-way near Bass Lake?	Railway lines are typically not paralleled because long parallels have been found to interfere with their switching and communications, and the rails need grounding and cathodic protection from the induced voltage from the power lines. The parallel of the existing 230 kV line offers a number of benefits including use of existing access, corridor sharing and similar land use.
There are many residences in the Loon Lake area south of the existing line. We recommend a route to the north of the existing line in this area.	Thank you for your feedback.
Why don't you parallel the highway?	<p>NextBridge has been informed by the Ministry of Transportation that a permit is required to place a transmission line within 400 m of any limit of a controlled access highway.</p> <p>Placing the transmission line within the right-of-way is prohibited on Class I and II highways. The required setback for electric power transmission lines is 14 m from Class I and II highways and 0.3 m from other class highways.</p>
Will parks and other protected areas be considered?	Parks and other protected areas will be considered when selecting the preferred route.
We have features on and around our land that you should know about (cemeteries, pastures, farms, septic beds,	This information will be considered in facility routing and impact assessment work.

Comment	Response
camps, public and private trails, cliffs/mountains, cottages, lakes, watercourse, etc.)?	
Health and Safety	
I'm concerned about increases in Electric and Magnetic Fields (EMF) from the new line and in combination with the existing line.	<p>Electromagnetic Fields (EMFs; also called electric and magnetic fields), are invisible forces that surround electrical equipment, power cords, and power lines. You cannot see or feel EMFs. Every time you use electricity and electrical appliances, you are exposed to EMFs at extremely low frequencies (ELF). EMFs produced by both power lines and use of electrical appliances belong to this category. EMFs are strongest when close to the source. As you move away from the source, the strength of the fields fades rapidly.</p> <p>There is no compelling scientific evidence that EMFs in living and school environments, regardless of distance from transmission lines, cause ill health.</p> <p>Health Canada (2012) states: <i>"When you are inside your home, the magnetic fields from high voltage power lines and transformer boxes are often weaker than those from household electrical appliances".</i></p> <p>Based on the available weight of evidence, Health Canada <i>"does not consider that any precautionary measures are needed regarding daily exposures to EMFs at ELFs. There is no conclusive evidence of any harm caused by exposures at levels found in Canadian homes and schools, including those located just outside the boundaries of power line corridors"</i>.</p>
I'm concerned about spraying of the right-of-way with herbicides and the effect it may have on blueberry picking and game (hunting).	<p>Initial clearing of the right-of-way will be completed through mechanical means. Once cleared, vegetation in the right-of-way may be maintained through treatment with herbicides and trimming. Herbicides will only be used where permitted according to applicable guidelines, regulations and/or legislation, and will be applied in accordance with their labels using qualified contractors.</p> <p>The EA will confirm the operational parameters and measures to minimize effects.</p>
Internet and Communications	
Will the line affect cell tower signals and internet?	There are no anticipated effects to cell towers.
Suggest you add Tbaytel to your contact list.	Tbaytel has been added to the contact list.
Why do we need this line?	Industrial activities in northwestern Ontario, particularly in the mining sector, are expected to drive strong electricity demand growth in the coming decade. Coupled with changes in the region's supply situation, the Ontario Power Authority forecasts a need for new supply to meet demand in northwestern Ontario.

Comment	Response
Approval Process	
How was the process developed?	This Project is subject to the Ontario <i>Environmental Assessment Act</i> and an Individual Environmental Assessment (EA) will be completed. The EA process is a long established process that considers the needs of the people, businesses and the natural environment in the decision making process. There are two key parts to an Individual EA: the EA ToR which outlines the scope of work to be undertaken; and the preparation of the EA.
Who is responsible for Approval?	The two main approvals required are from the Minister of the Environment for the EA and from the Ontario Energy Board through their Leave to Construct process. Other Project permits could be required depending on the facility location and design.
We request that an Open House be added in Terrace Bay so that we don't have to drive to Marathon.	Two additional Open House locations were added as a result of this comment from the public and other stakeholders. Additional Open Houses were scheduled in White River (December 10, 2013) and Terrace Bay (December 11, 2013).
I received the Notice of Open Houses after the events took place.	NextBridge regrets any delays in delivery of the Notification. As the mailing list is refined, NextBridge expects more timely delivery of project communication materials. Two more rounds of Open Houses are planned for 2014.
Will you consider having an Open House in Dorion during the next round of Open Houses?	This will be considered.
Could NextBridge show up on my property one day and start construction without notice?	<p>No, before construction can begin, Environmental Assessment, Leave to Construct, and other approvals are required. There are several opportunities for public input during these approval processes. Further, NextBridge requires an easement before it can begin construction activities on private property.</p> <p>If applicable approvals are obtained, construction is anticipated to begin in 2016. There will be public notices regarding construction initiation.</p>
Construction	
When will construction start and how long will it take?	Construction is anticipated to take place from 2016 to 2018.
Will construction start at one end and move in one direction or will it begin at more than one location?	The specific construction approach and timing is not known at this time. It will be determined as part of the detailed design phase of the Project.
When will construction take place in my area?	The specific construction approach and timing is not known at this time.
Will local labour be used for project construction and maintenance?	NextBridge intends to hire local firms where possible and has done so already. NextBridge often finds that local firms are cost competitive in that they don't have to mobilize machinery or work camps and know the area well.
What short-term construction effects and long-term effects can be expected for landowners?	Safety is the number one priority for NextBridge. During the construction phase, NextBridge will mitigate construction impacts wherever practicable. This will include various measures to minimize the impacts of noise and traffic disruptions as appropriate and practicable. NextBridge will endeavor to communicate hours of work, traffic impacts, and road detours to stakeholders and affected people in the area in

Comment	Response
	<p>advance of the work being conducted.</p> <p>The long term effects from the proposed new facilities will be similar to those experienced from the existing 230 kV transmission line. These primarily include visibility of the towers and conductors, a wider cleared right-of-way and a limitation of activities that can be carried out at the tower bases and in the area of the supporting guy wires.</p>
Access Roads	
Will new access roads be needed or will existing Hydro One access roads be used and improved?	NextBridge will maximize the use of existing right-of-way access roads and roads leading to the existing 230 kV right-of-way where possible. In certain instances, new access roads will need to be constructed. Any new access roads would be erected or constructed to code and be in standard with good construction and design practices. These will be planned to minimize potential environmental impacts.
If an access road is needed on my property, where will it be constructed, what will it look like and how will it be maintained?	These are questions that can't be answered at this time. Once the EA has been completed and an access plan has been developed then NextBridge would be in a position to answer these questions.
Natural Environment	
We have information on the plants and animals in the area and in nearby lakes and watercourses.	Information provided to the Project team will be considered during the EA process.
Could local watercourses and groundwater be affected by the Project?	Towers will be set back from watercourses and tower foundations and guy wires will primarily be affixed to the rock surface. Erosion and sediment control measures will be employed to prevent surface water runoff. If bridges must be constructed over watercourses, NextBridge will follow applicable guidelines used by the MNR for water crossings associated with forest access roads.
Is erosion an issue?	Areas of potential erosion are located primarily at the tower bases during preparation of foundations. Appropriate mitigation measures will be employed to ensure that wind and or water erosion does not occur.
How will you address birds that nest/perch on towers?	This is a situation found on the existing 230 kV transmission line and will be treated in the same fashion. Should nests present an issue with the operation of the line, they will be removed after the young are out of the nest.
Socio-Economic, Cultural Environment	
I have a business that may be affected by the Project.	Information provided to the Project team will be considered during the EA process.
I'm concerned about the visual impacts of the Project.	The project will generally be located next to an existing transmission line. As such, a wider right-of-way may be more visible but the height of the new facility will not be appreciatively different. In areas of concentrations of permanent and seasonal residents, a viewshed analysis may be undertaken.

Attachments to NextBridge Monthly Report

Schedule C

**Landowner notification letter related to new alternatives under
assessment**

July 23, 2014

RE: Proposed NextBridge Infrastructure East-West Tie 230 kV Double Circuit Transmission Line Project

Hello,

A new electric power transmission line, anticipated to generally parallel the existing East-West Tie between Thunder Bay and Wawa, Ontario, is being developed to maintain a reliable, long-term supply of electricity in northwestern Ontario.

NextBridge Infrastructure (NextBridge), a partnership between NextEra Energy Canada, Enbridge Inc., and Borealis Infrastructure, has submitted Terms of Reference for Environmental Assessment for a new 400 kilometre, double-circuit 230 kilovolt transmission line that generally parallels an existing double-circuit, 230 kV transmission line corridor connecting the Wawa Transformer Station (TS) to the Lakehead TS near Thunder Bay (with a connection at Marathon TS).

Through our public consultation, we have received information and feedback regarding current route proposals, as well as suggestions for route refinements and alternatives. After reviewing feedback received from residents within the Township of Dorion, a new potential route refinement has been identified that will be further studied. You are receiving this letter because you have been identified as a potentially directly affected or adjacent landowner or tenant located within a 500m radius of the newly proposed refinement. We are committed to identifying a technically feasible route that has the least impacts from a social, economic, cultural and natural environment perspective while respecting the cost implications for Ontario ratepayers. Your participation in this process is vital to the success of the route selection process and the Project as a whole.

Please find enclosed the original Project correspondence, which included;

1. November 2013 Mailing - Project letter, newsletter, and Notice of Commencement,
2. January 2014 Mailing - Project letter notifying stakeholders that Draft Terms of Reference were available for review,
3. February 2014 Mailing - Project letter and Notice of Submission of the Terms of Reference to the Ontario Ministry of Environment (MOE).

We emphasize that we are still in the Project planning and development phase and are interested in your views and input. We would be pleased to hear from you with any questions

or concerns you may have with regard to the Project. You will be included in future Project update mailings.

There will also be further opportunities to actively participate in our consultation program throughout the development phase of the Project, including two additional rounds of Open Houses that are planned for later in 2014. The locations, dates and times of these Open Houses are yet to be determined, and will be publically advertised closer to the time.

Additional project information that was distributed and displayed during our first round of Open Houses can be provided upon request, or can be found on our Project website at www.nextbridge.ca.

We would like to thank you for your participation in our Consultation Program for this Project. Your input is important to us. If you have any questions or concerns, or if you require further information regarding this Project, please call our toll-free phone line at 1-888-767-3006 or email info@nextbridge.ca and leave your contact information or visit our Project web site at www.nextbridge.ca.

Sincerely,



Michael Power, P.Eng.
Project Director – East-West Tie Transmission Project
NextBridge Infrastructure

Attachments

Si vous désirez ces informations en français, s'il vous plaît contactez NextBridge au 1-800-767-3006 ou info@nextbridge.ca.