



RESIDENTIAL DELIVERY RATES

Ontario Energy Board

FILE No. ... EB-2014-0055EXHIBIT No. K 1.2DATE Oct 20, 2014

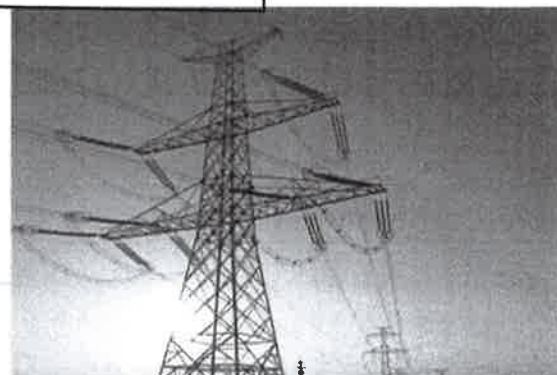
08/99

What is a home delivery rate?

A delivery rate is the price you pay to have your electricity delivered to your home. It covers the cost of maintenance,

upkeep, and all the little things that go into making sure

you have the energy you need, when you need it.



Understanding Delivery Rates

All residential delivery rates are based on your service type. Service types are determined by the area you live in and the number of customers in your area. The fewer people who live in your area, the more it takes to bring you reliable energy, and the higher the cost. You can locate your service type and delivery rates on page two of your bill.

- **Urban High Density** - contains 3,000 or more customers, with at least 60 customers for every kilometer of power line used to supply energy to the zone
- **Medium Density** - contains 100 or more customers, with at least 15 customers for every kilometer of power line used to supply energy to the zone.
- **Low Density** - the remaining area not covered by Urban or Medium Density areas.

You may notice some changes to your delivery and regulatory rates starting January 1, 2014. Find out more about these changes [here](#).

About Year-Round Residential Rate Status

If you live at your seasonal residence year-round or you have a farm with a primary residence, you can [apply](#) for year-round residential rate status. To see if you qualify for year-round residential rate status, visit our [Frequently Asked Questions](#) page.

Read the chart below to see how the delivery rate prices factor into your bill (as of January 1, 2014).

Curious about the bigger picture? Find out how all the factors - including electricity prices and delivery rates - work their way into your bill.

Delivery Rates	Urban High Density	Medium Density	Low Density
Distribution service charge (\$ / month)	\$16.64	\$24.07	\$33.03 (includes \$28.50 RRRP credit)
Distribution volume charge (metered usage - ¢ / kWh)	2.618 ¢	3.497 ¢	3.932 ¢
Transmission connection charge (adjusted usage - ¢ / kWh)	0.489 ¢	0.499 ¢	0.470 ¢