

IN THE MATTER OF the *Ontario Energy Board Act, 1998*, S.O. 1998, c.15, Schedule B;

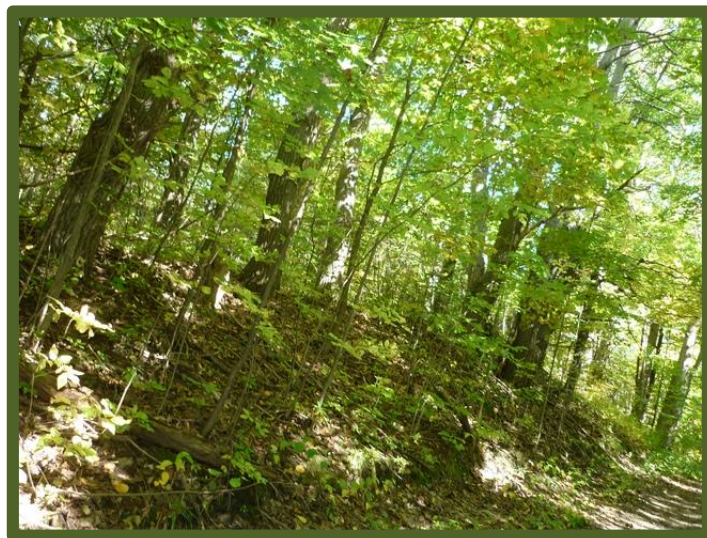
AND IN THE MATTER OF an application by wpd Sumac Ridge Incorporated for an Order or Orders pursuant to section 41(9) of the *Electricity Act, 1998*, S.O. 1998, c. 15, Schedule A establishing a location for the Applicant's distribution facilities on public road allowances owned by the Municipality of Kawartha Lakes, Ontario, as set out in this application.

ATTACHMENTS TO SUPPLEMENTAL INTEROGATORIES
OF THE INTERVENOR, E. SALMON

All photographs below documenting both unopened, unmaintianied road allowances Wild Turkey and Gray Road were taken on September 28, 2014. Gray Road a dead end unopened, unmaintained hertitage road allowance – photos indicating the narrow and varying width of Gray Road, the dense vegetation, slopes and road and water feature conditions not documented in the Location Drawings.







Wild Turkey Road is an unmaintained, unopened road allowance. The following are photos provide documentation of features where the below ground collector line is planned to connect to the site of Turbine # 5 including trees in its path that have not been documented in the Location Drawings provided by the Applicant.



