

UNDERTAKINGS J4.6, J4.7 and J4.8

Undertaking

(a) Update the first box, "production unit energy costs" in chart 3 from Exhibit A1, Tab 4, Schedule 3, page 17, using EUCG data for 2007.

(b) Update with 2007 numbers exhibit L-4-2, appendix 3, page 5.

(c) Update with 2007 numbers Exhibit L-4-2, appendix 3, page 8.

Response

Updated information is provided below.

(a) Exhibit A1-T4-S3 Chart 3

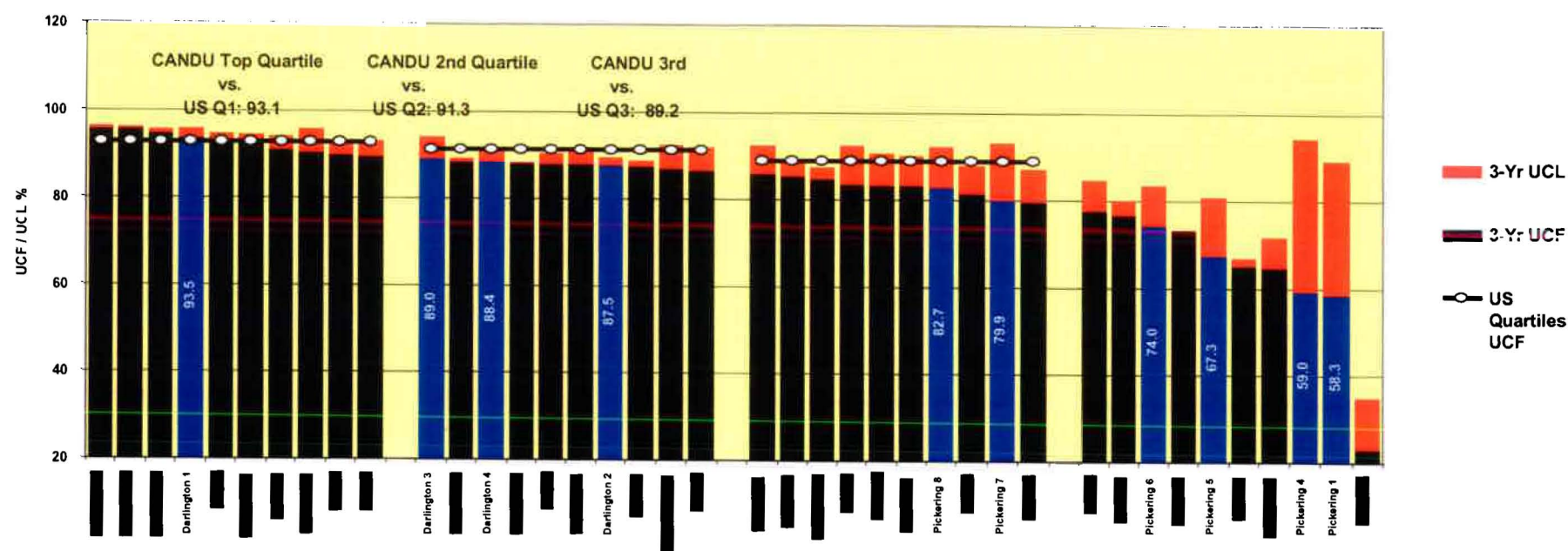
Chart 3 - Nuclear Benchmarking Results – 2007 Year end data (Cdn \$)

| Measure | | Value | Comparison | Source and Peer Group |
|-------------------------------------------------------------------------------------------------------------------------------------------------------------------------------|--------------|-------|-------------------------------------------------------------------------------------------------------------------------------------------------------------------|----------------------------------------------------------------------------------------------------------------------------------------------------------------------------------------------------------------------------------------------------------------------|
| Production Unit Energy Costs "PUEC" (\$/MWh Can\$) <i>PUEC composition is as per EUCG Industry definition and will vary from the internal OPG Nuclear value</i> | Pickering A | 119 | US industry median is 23 \$/MWh, US top quartile is 20 \$/MWh. PA/PB U.S. size peer group median 31 \$/MWh DN U.S. size peer group median 23 \$/MWh | EUCG* for 2007 U.S. – Can. \$ Fx rate 0.93 (5.7% increase over 2006) * EUCG cost data are always in U.S. dollars of the year, and are not normalized in any way for unit size, age or technology differences. Conversion to US\$ was performed by OPG. |
| | Pickering B | 53 | | |
| | Darlington | 29 | | |
| | Nuclear | 44 | | |
| Unit Capability Factor (%) | Pickering A | 58.6 | CANDU World Data: Median: 86.0 Top quartile: 89.4 | OPG/WANO data: three year average. CANDU unit capability factor scores include OPG. |
| | Pickering B | 76.0 | | |
| | Darlington | 89.5 | | |
| | Nuclear | 81.6 | | |
| Nuclear Performance Index (NPI) | Pickering A | 54.7 | CANDU World Data: Median: 67.0; Top quartile: 92.2 | OPG/WANO NPI data: up to 3 year averages for various components CANDU NPI scores exclude OPG |
| | Pickering B | 61.8 | | |
| | Darlington | 91.2 | | |
| | Nuclear | 63.6 | | |
| Elective Maintenance Backlogs (# outstanding per unit) | Pickering A | 428 | US industry median: 348 US top quartile: 304 | Sourced from WANO working group but not standard WANO measure. One year data for OPG/WANO. |
| | Pickering B | 926 | | |
| | Darlington | 373 | | |
| | Nuclear avg. | 576 | | |

(b) Exhibit L-4-2, appendix 3, page 5 (1 of 2)

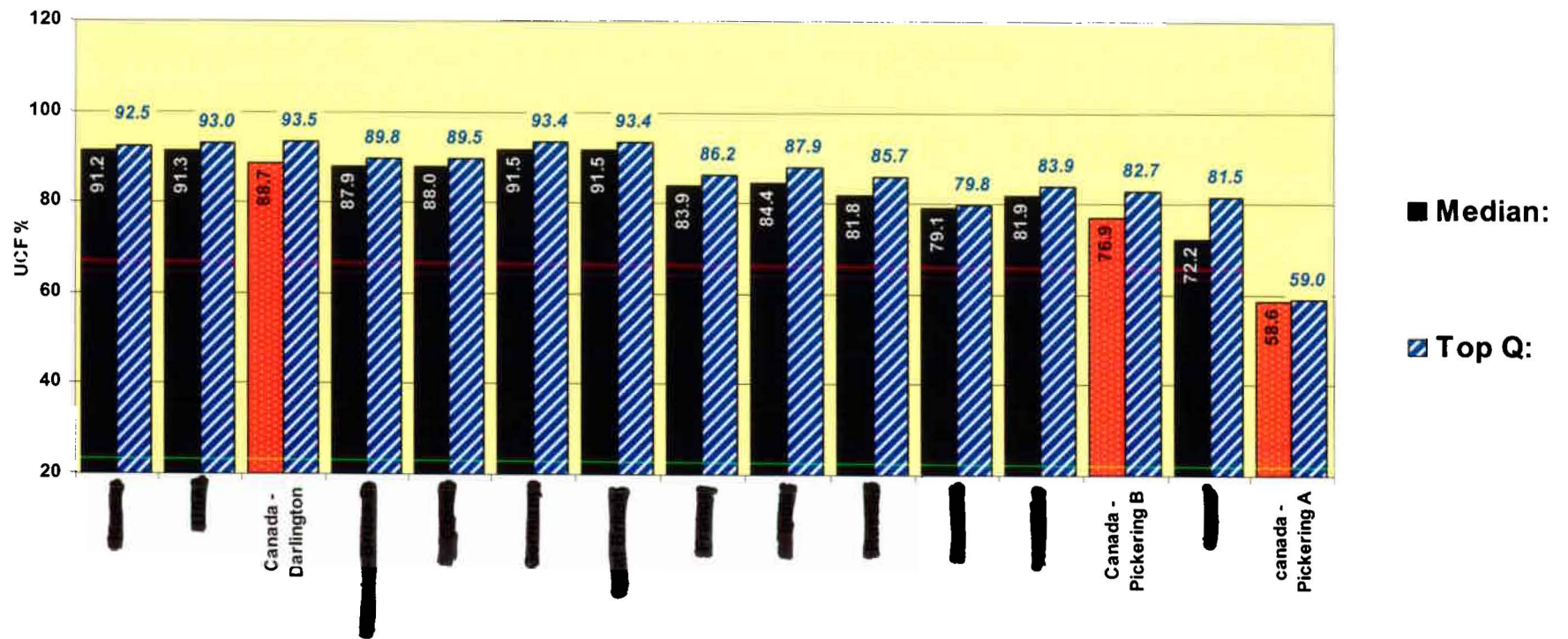
***Note:**
 All Indian Reactors, other than Rajasthan 2, are CANDU based design
 and technology but are not built or considered CANDU by AECL

CANDU Reliability Performance to end of 2007



(b) Exhibit L-4-2, appendix 3, page 5 (2 of 2)

Nuclear Fleet Generation Reliability (3yr Avg UCF to end of 2007)



(c) Exhibit L-4-2, appendix 3, page 8.

