



## Evidence Concerning Provincial Energy Policy

Dr. John Harrison PhD

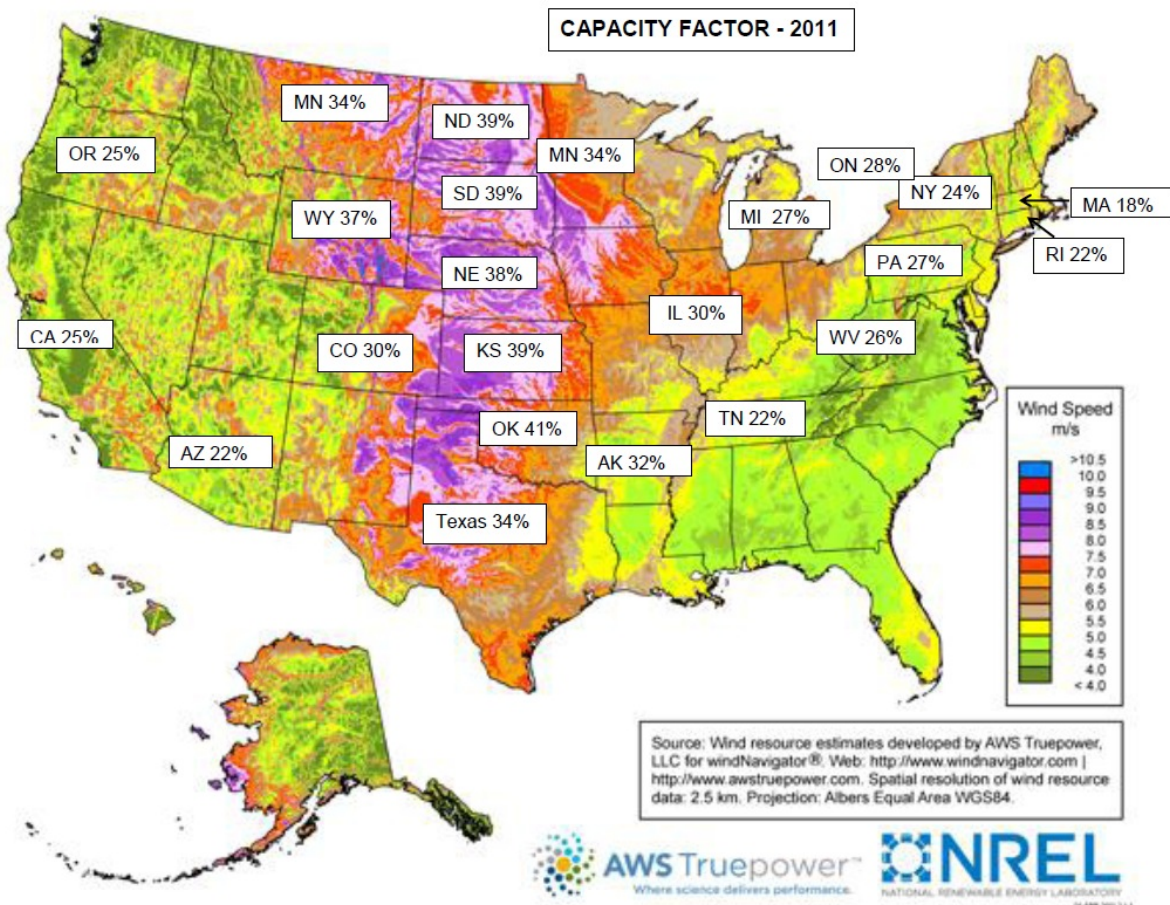
January 23, 2015

The addition of more wind energy to the Ontario supply does not make sense, particularly for the Windlectric's proposed Wind Energy Plant in South Eastern Ontario.

### Capacity Factor

The figure shows the National Renewable Energy wind atlas for the USA. Superposed are the 2011 annual average capacity factors by State.<sup>1</sup> Those States within the high-wind Great Plains have worthwhile capacity factors for wind energy. The States to the east and west have significantly less wind and consequently lower capacity factors.

Ontario, to the north of New York State, has an annual capacity factor of 28%.<sup>2</sup> This is somewhat higher than those of the neighbouring States because of the prevailing wind off three of the Great Lakes. Nevertheless, a capacity factor of 28%, combined with the now well-established annual decline in capacity factor, is not enough to make Ontario wind plants viable.



<sup>1</sup> These numbers are from the Energy Information Administration of the US Department of Energy.

<sup>2</sup> Source of data: IESO and OPA; see page 111 of the 2011 Auditor General's Report.