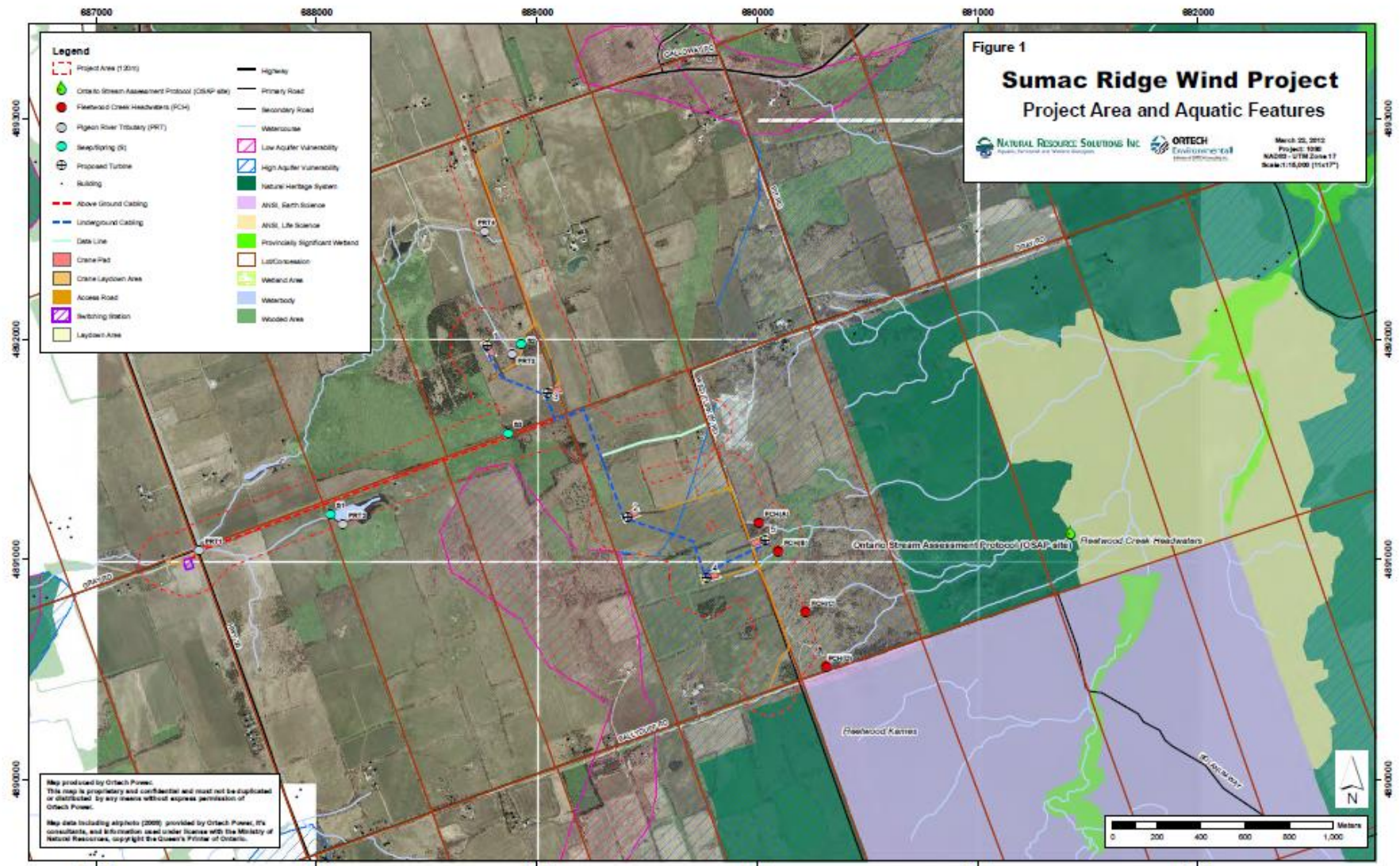


GRAY ROAD – unopened road allowance
East of Hwy 35

City of Kawartha Lakes

RE: EB 2013-0442

Submitted by EJ Salmon









Presence of frogs in seep demonstrates that it is permanently wet























Mature trees along north side of Gray Road road allowance

























Example of clearance required to erect hydro poles from nearby Telecom Rd.