

June 2, 2015

RESS & COURIER

Ms. Kristen Walli
Board Secretary
Ontario Energy Board
2300 Yonge Street
Suite 2700
Toronto, Ontario
M4P 1E4

RE: **Union Gas Limited (“Union”)**
EB-2014-0333
Sarnia Expansion Project

This letter is to update the Ontario Energy Board of two routing changes for the proposed Sarnia Expansion project.

The first change is where the pipeline crosses Highway 40. The Ministry of Transportation (“MTO”) requested Union move the pipeline approximately 77 meters north from the crossing location shown in the pre filed evidence. MTO requested this change so that the pipeline will not impact future improvements that MTO has planned for the intersection of Rokeby Line and Highway 40. Moving the pipeline north also impacted the adjacent properties on the east and west side of Highway 40. Union has met with both parties and they have signed new permanent and temporary land rights agreements to facilitate the new running line of the pipeline.

The second change is at the corner of Ladysmith Line and Rokeby Line. Working with St. Clair Township it was determined that a diagonal directional drill crossing of the intersection was the preferred method for crossing the intersection. In order to complete the directional drill and avoid conflicts with existing utilities, additional permanent and temporary lands rights are required at the entry and exit point of the drill. Union has met with both parties and they have signed new permanent and temporary land rights agreements to facilitate the directional drill crossing.

An aerial photo is attached that shows the original and revised location of the pipeline and the land rights required to complete the project.

If you have any questions or require additional information please contact Bill Wachsmuth at 519-436-5457.

Regards,

[Original Signed By]

W.T. (Bill) Wachsmuth, RPF
Senior Administrator, Regulatory Projects
:sb



LEGEND

EXISTING UNION GAS PIPELINE

PROPOSED NPS 20 UNION GAS PIPELINE

PROPOSED NPS 20 HDD LOCATION

NOVA CHEMICAL CANADA LTD.

PRAXAIR CANADA

ENBRIDGE CONSUMER GAS STORAGE

WATERMAIN

EXISTING CULVERT

EXISTING DRAIN TILE

EXISTING HYDRO

PROPOSED SILT FENCE

EXISTING UNION GAS EASEMENT

PROPOSED UNION GAS EASEMENT

PROPOSED TEMPORARY EASEMENT

UNION GAS PROPERTY LINE

TEST BOX

HYDRO-VAC LOCATES

0 50 100 150 200 250 300

0 50 100 150 200 250 300

25 50 100 150 200 250 300

50 100 150 200 250 300

150 METRES

500 FEET

LINK SERIES

REV.	DATE	BY	APPD	REMARKS
1	2015-03-19	MMJ	RC	ISSUE FOR CONSTRUCTION
2	2015-03-19	MMJ	RC	ISSUE FOR COMMENT
3	2014-09-26	MMJ	RC	ISSUE FOR REVIEW
4	2014-09-26	MMJ	LR	ISSUE FOR BID
5	2014-09-13	MMJ	PRS	ISSUE FOR O.E.B.
6	2014-09-14	MMJ	PRS	PRELIMINARY
7	DATE	BY	APPD	REMARKS

ENGINEER: RONA GROZELLE

uniongas
A Spectra Energy Company

NPS 20 PAYNE TO SARNIA PIPELINE
CONCESSION 7, LOT 21, ST. CLAIR TOWNSHIP
PAYNE COMPRESSOR STN TO ROKEBY LINE ALIGNMENT

DRAWN BY: MATT MADOLICK

DATE: 2015-03-19

CAD DATE: 1/2000

CHECKED BY:

DATE:

FILE REVISION DATE: 2015-03-19

APPROVED BY:

DATE:

SHEET

DRAWING NO.: PL257-02 (OLD)



LEGEND

EXISTING UNION GAS PIPELINE

PROPOSED NPS 20 UNION GAS PIPELINE

PROPOSED NPS 20 HDD LOCATION

NOVA CHEMICAL CANADA LTD.

PRAXAIR CANADA

ENBRIDGE CONSUMER GAS STORAGE

WATERMAIN

EXISTING CULVERT

EXISTING DRAIN TILE

EXISTING HYDRO

PROPOSED SILT FENCE

EXISTING UNION GAS EASEMENT

PROPOSED UNION GAS EASEMENT

PROPOSED TEMPORARY EASEMENT

UNION GAS PROPERTY LINE

TEST BOX

HYDRO-VAC LOCATES

0 50 100 150 200 250 300

0 50 100 150 200 250 300

25 50 100 150 200 250 300

50 100 150 200 250 300

150 METRES

500 FEET

LINK SERIES

REV.	DATE	BY	APPD	REMARKS
1	2015-03-12	MMJ	RC	ISSUE FOR CONSTRUCTION
2	2015-03-19	MMJ	RC	ISSUE FOR COMMENT
3	2014-09-21	MMJ	RC	ISSUE FOR REVIEW
4	2014-09-26	MMJ	LR	ISSUE FOR BID
5	2014-09-13	MMJ	PRS	ISSUE FOR O.E.B.
6	2014-09-14	MMJ	PRS	PRELIMINARY
7	DATE	BY	APPD	REMARKS

ENGINEER: RONA GROZELLE

uniongas
A Spectra Energy Company

NPS 20 PAYNE TO SARNIA PIPELINE
CONCESSION 7, LOT 21, ST. CLAIR TOWNSHIP
PAYNE COMPRESSOR STN TO ROKEBY LINE ALIGNMENT

DRAWN BY: MATT MADOLICK

DATE: 2015-03-19

CAD DATE: 1/2000

CHECKED BY:

DATE:

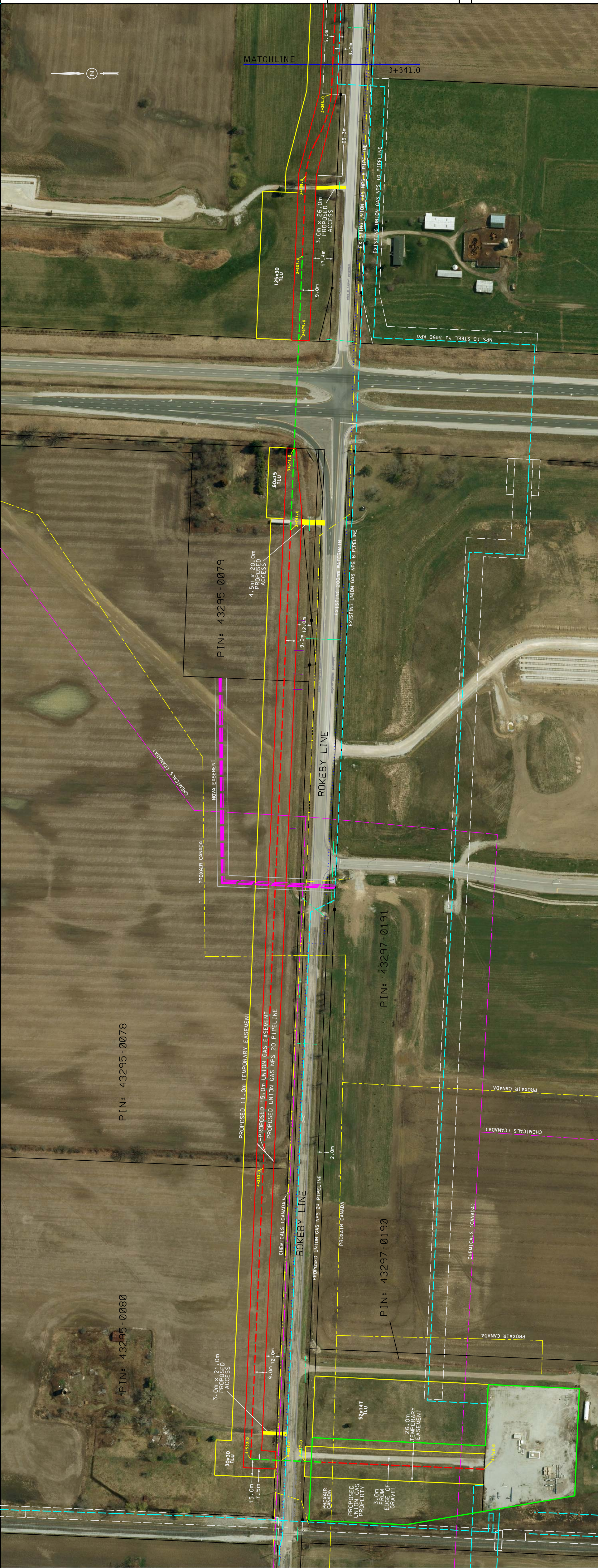
FILE REVISION DATE: 2015-03-22

APPROVED BY:

DATE:

SHEET

DRAWING NO.: PL257-02 (NEW)



LEGEND

EXISTING UNION GAS PIPELINE

PROPOSED NPS 20 UNION GAS PIPELINE

PROPOSED NPS 20 HDD LOCATION

NOVA CHEMICAL CANADA LTD.

PRAXAIR CANADA

ENBRIDGE CONSUMER GAS STORAGE

WATERMAIN

EXISTING CULVERT

EXISTING DRAIN TILE

EXISTING HYDRO

PROPOSED SILT FENCE

EXISTING UNION GAS EASEMENT

PROPOSED UNION GAS EASEMENT

PROPOSED TEMPORARY EASEMENT

UNION GAS PROPERTY LINE

TEST BOX

HYDRO-VAC LOCATES

•

0

25

50

100

150

200

250

300

350

400

450

500

550

600

650

700

750

800

850

900

950

1000

1050

1100

1150

1200

1250

1300

1350

1400

1450

1500

1550

1600

1650

1700

1750

1800

1850

1900

1950

2000

2050

2100

2150

2200

2250

2300

2350

2400

2450

2500

2550

2600

2650

2700

2750

2800

2850

2900

2950

3000

3050

3100

3150

3200

3250

3300

3350

3400

3450

3500

3550

3600

3650

3700

3750

3800

3850

3900

3950

4000

4050

4100

4150

4200

4250

4300

4350

4400

4450

4500

4550

4600

4650

4700

4750

4800

4850

4900

4950

5000

5050

5100

5150

5200

5250

5300

5350

5400

5450

5500

5550

5600

5650

5700

5750

5800

5850

5900

5950

6000

6050

6100

6150

6200

6250

6300

6350

6400

6450

6500

6550

6600

6650

6700

6750

6800

6850

6900

6950

7000

7050

7100

7150

7200

7250

7300

7350

7400

7450

7500

7550

7600

7650

7700

7750

7800

7850

7900

7950

8000

8050

8100

8150

8200

8250

8300

8350

8400

8450

8500

8550

8600

8650

8700

8750

8800

8850

8900

8950

9000

9050

9100

9150

9200

9250

9300

9350

9400

9450

9500

9550

9600

9650

9700

9750

9800

9850

9900

9950

10000

10050

10100

10150

10200

10250

10300

10350

10400

10450

10500

10550

10600

10650

10700

10750

10800

10850

10900

10950

11000

11050

11100

11150

11200

11250

11300

11350

11400

11450

11500

11550

11600

11650

11700

11750

11800

11850

11900

11950

12000

12050

12100

12150

12200

12250

12300

12350

12400

12450

12500

12550

12600

12650

12700

12750

12800

12850

12900

12950

13000

13050

13100

13150

13200

13250

13300

13350

13400

13450

13500

13550

13600

13650

13700

13750

13800

13850

13900

13950

14000

14050

14100

14150

14200

14250

14300

14350

14400

14450

14500

14550

14600

14650

14700

14750

14800

14850

14900

14950

15000

15050

15100

15150

15200

15250

15300

15350

15400

15450

15500

15550

15600

15650

15700

15750

15800

15850

15900

15950

16000

16050

16100

16150

16200

16250

16300

16350

16400

16450

16500

16550

16600

16650

16700

16750

16800

16850

16900

16950

17000

17050

17100

17150

17200

17250

17300

17350

17400

17450

17500

17550

17600

17650

17700

17750

17800

17850

17900

17950

18000

18050

18100

18150

18200

18250

18300

18350

18400

18450

18500

18550

18600

18650

18700

18750

18800

18850

18900

18950

19000

19050

19100

19150

19200

19250

19300

19350

19400

19450

19500

19550

19600

19650

19700

19750

19800

19850

19900

19950

20000

20050

20100

20150

20200

20250

20300

20350

20400

20450

20500

20550

20600

20650

20700

20750

20800

20850

20900

20950

21000

21050

21100

21150

21200

21250

21300

21350

21400

21450

21500

21550

21600

21650

21700

21750

21800

21850

21900

21950

22000

22050

22100

22150

22200

22250

22300

22350

22400

22450

22500

22550

22600

22650

22700

22750

22800

22850

22900

22950

23000

23050

23100

23150

23200

23250

23300

23350

23400

23450

23500

23550

23600

23650

23700

23750

23800

23850

23900

23950

24000

24050

24100

24150

24200

24250

24300

24350

24400

24450

24500

24550

24600

24650

24700

24750

24800

24850

24900

24950

25000

25050

25100

25150

25200

25250

25300

25350

25400

25450

25500

25550

25600

25650

25700

25750

25800

25850

25900

25950

26000

26050

26100

26150

26200

26250

26300

26350

26400

26450

26500

26550

26600

26650

26700

26750

26800

26850

26900

26950

27000

27050

27100

27150

27200

27250

27300

27350

27400

27450

27500

27550

27600

27650

27700

27750

27800

27850

27900

27950

28000

28050

28100

28150

28200

28250

28300

28350

28400

28450

28500

28550

28600

28650

28700

28750

28800

28850

28900

28950

29000

29050

29100

29150

29200

29250

29300

29350

29400

29450

29500

29550

29600

29650

29700

29750

29800

29850

29900

29950

30000

30050

30100

30150

30200

30250

30300

30350

30400

30450

30500

30550

30600

30650

30700

30750

30800

30850

30900

30950

31000

31050

31100

31150

31200

31250

31300

31350

31400

31450

31500

31550

31600

31650

31700

31750

31800

31850

31900

31950

32000

32050

32100

32150

32200

32250

32300

32350

32400

32450

32500

32550

32600

32650

32700

32750

32800

32850

32900

32950

33000

33050

33100

33150

33200

33250

33300

33350

33400

33450

33500

33550

33600

33650

33700

33750

33800

33850

33900

33950

34000

34050

34100

34150

34200

34250

34300

34350

34400

34450

34500

34550

34600

34650

34700

34750

34800

34850

34900

34950

35000

35050

35100

35150

35200

35250

35300

35350

35400

35450

35500

35550

35600

35650

35700

35750

35800

35850

35900

35950

36000

36050

36100

36150

36200

36250

36300

36350

36400

36450

36500

36550

36600

36650

36700

36750

36800

36850

36900

36950

37000

37050

37100

37150

37200

37250

37300

37350

37400

37450

37500

37550

37600

37650

37700

37750

37800

37850

37900

37950

38000

38050

38100

38150

38200

38250

38300

38350

38400

38450

38500

38550

38600

38650

38700

38750

38800

38850

38900

38950

39000

39050

39100

39150

39200

39250

39300

39350

39400

39450

39500

39550

39600

39650

39700

39750

39800

39850

39900

39950

40000

40050

40100

40150

40200

40250

40300

40350

40400

40450

40500

40550

40600

40650

40700

40750

40800

40850

40900

40950

41000

41050

41100

41150

41200

41250

41300

41350

41400

41450

41500

41550

41600

41650

41700

41750

41800

41850

41900

41950

42000

42050

42100

42150

42200

42250

42300

42350

42400

42450

42500

42550

42600

42650

42700

42750

42800

42850

42900

42950

43000

43050

43100

43150

43200

43250

43300

43350

43400

43450

43500

43550

43600

43650

43700

43750

43800

43850

43900

43950

44000

44050

44100

44150

44200

44250

44300

44350

44400

44450

44500

44550

44600

44650

44700

44750

44800

44850

44900

44950

45000

45050

45100

45150

45200

45250

45300

45350

45400

45450

45500

45550

45600

45650

45700

45750

45800

45850

45900

45950

46000

46050

46100

46150

46200

46250

46300

46350

46400

46450

46500

46550

46600

46650

46700

46750

46800

46850

46900

46950

47000

47050

47100

47150

47200

47250

47300

47350

47400

47450

47500

47550

47600

47650

47700

47750

47800

47850

47900

47950

48000

48050

48100

48150

48200

48250

48300

48350

48400

48450

48500

48550

48600

48650

48700

48750

48800

48850

48900

48950

49000

49050

49100

49150

49200

49250

49300

49350

49400

49450

49500

49550

49600

49650

49700

49750

49800

49850

49900

49950

50000

50050

50100

50150

50200

50250

50300

50350

50400

50450

50500

50550

50600

50650

50700

50750

50800

50850

50900

50950

51000

51050

51100

51150

51200

51250

51300

51350

51400

51450

51500

51550

51600

51650

51700

51750

51800

51850

51900

51950

52000

52050

52100

52150

52200

52250

52300

52350

52400

52450

52500

52550

52600

52650

52700

52750

52800

52850

52900

52950

53000

53050

53100

53150

53200

53250

53300

53350

53400

53450

53500

53550

53600

53650

53700

53750

53800

53850

53900

53950

54000

54050

54100

54150

54200

54250

54300

54350

54400

54450

54500

54550

54600

54650

54700

54750

54800

54850

54900

54950

55000

55050

55100

55150

55200

55250

55300

55350

55400

55450

55500

55550

55600

55650

55700

55750

55800

55850

55900

55950

56000

56050

56100

56150

56200

56250

56300

56350

56400

56450

56500

56550

56600

56650

56700

56750

56800

56850

56900

56950

57000

57050

57100

57150

57200

57250

57300

57350

57400

57450

57500

57550

57600

57650

57700

57750

57800

57850

57900

57950

58000

58050

58100

58150

58200

58250

58300

58350

58400

58450

58500

58550

58600

58650

58700

58750

58800

58850

58900

58950

59000

59050

59100

59150

59200

59250

59300

59350

59400

59450

59500

59550

59600

59650

59700

59750

59800

59850

59900

59950

60000

60050

60100

60150

60200

60250

60300

60350

60400

60450

60500

60550

60600

60650

60700

60750

6