

**CORUNNA 2<sup>nd</sup> FEED SYSTEM  
LINE 51 - NPS12  
CLASS STUDY ASSESSMENT  
SHEET 1 OF 3**

NO.	DATE	DRW.	CHK.	ENG.	REVISIONS	NO.	DATE	DRW.	CHK.	ENG.	REVISIONS
A	15.04.29	CPJ	DJ	DJ	ISSUED FOR REVIEW (25207)						

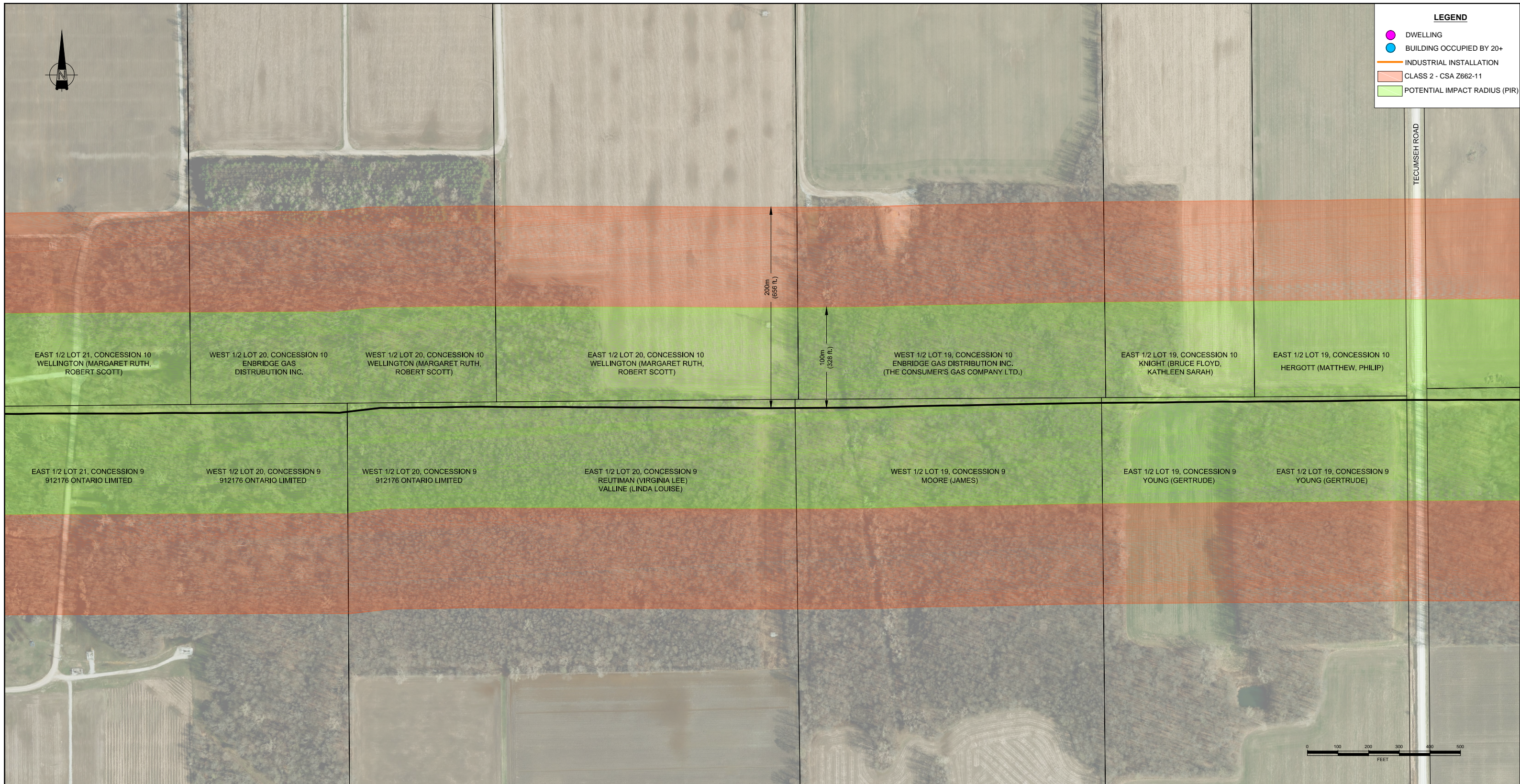
- TSSA FS-196-12 OIL AND GAS PIPELINE SYSTEMS CODE ADOPTION DOCUMENT AMENDMENT, NOV, 01, 2012.
- CSA-Z662 OIL AND GAS PIPELINE SYSTEMS, 2011.

**MIG ENGINEERING (2011) LTD.**  
PROJECT MANAGERS, ENGINEERS  
SURVEYORS, MAPPERS

519.337.8000

PROJECT No. 10693.00

DATE: 2015.04.29	SCALE: 1" = 150'-0"	CAD FILE: 10693SK01.dwg	MICROF
DRN: CPJ	DRAWING NUMBER		
CHKD: DJ	10693SK01	SIZE D	REV. A
DESIGN: D. JOHNSON			



**CORUNNA 2<sup>nd</sup> FEED SYSTEM  
LINE 51 - NPS12  
CLASS STUDY ASSESSMENT  
SHEET 2 OF 3**

NO.	DATE	DRW.	CHK.	ENG.	REVISIONS	NO.	DATE	DRW.	CHK.	ENG.	REVISIONS
A	15.04.29	CPJ	DJ	DJ	ISSUED FOR REVIEW (25207)						

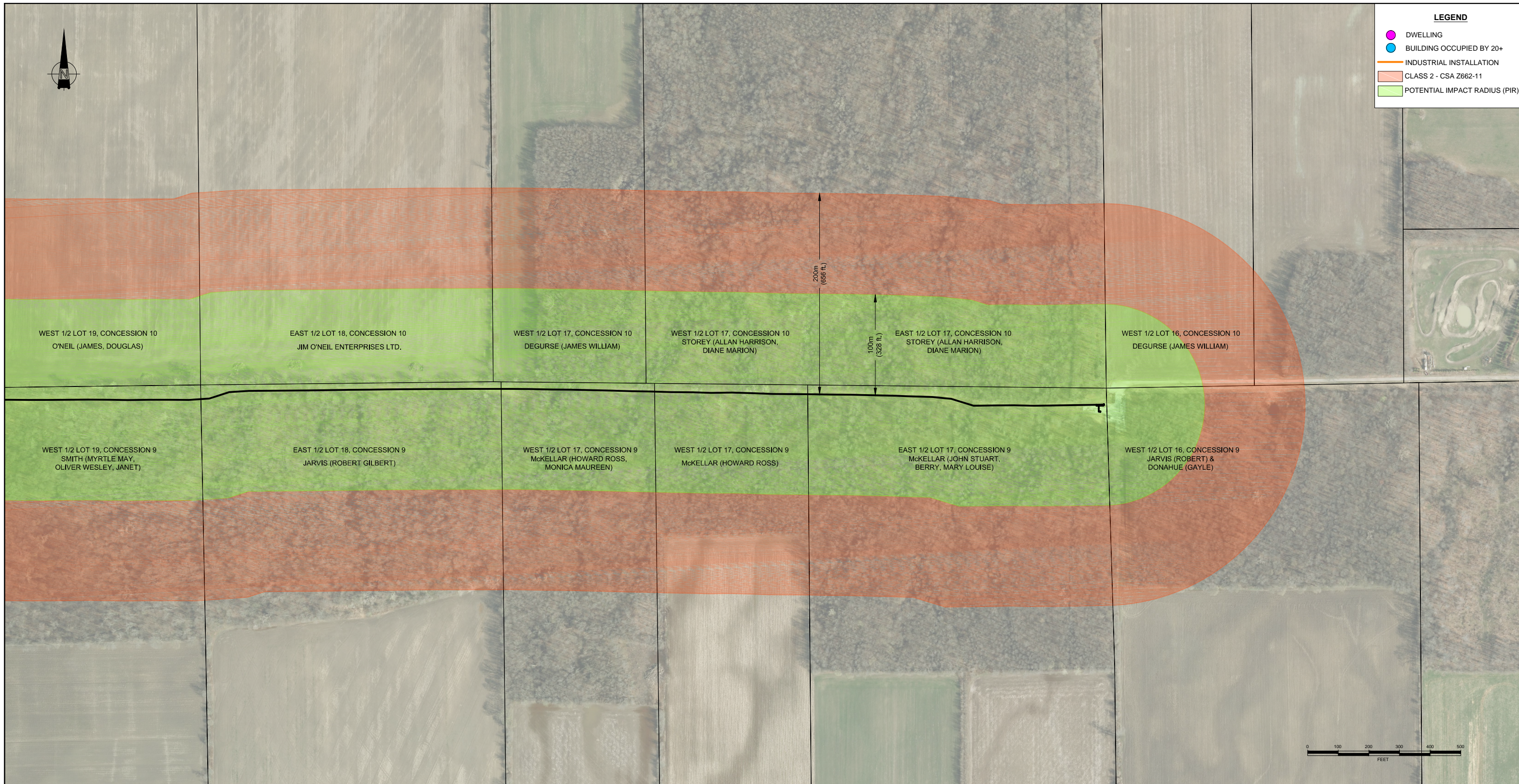
1. TSSA FS-196-12 OIL AND GAS PIPELINE SYSTEMS CODE ADOPTION DOCUMENT AMENDMENT, NOV, 01, 2012.  
2. CSA-Z662 OIL AND GAS PIPELINE SYSTEMS, 2011.

REFERENCE DRAWINGS

MIG ENGINEERING (2011) LTD.  
PROJECT MANAGERS, ENGINEERS  
SURVEYORS, MAPPERS

PROJECT No. 10693.00

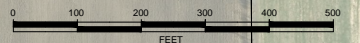
DATE: 2015.04.29	SCALE: 1" = 150'-0"	CAD FILE: 10693SK01.dwg	MICROF
DRN: CPJ	DRAWING NUMBER		
CHKD: DJ	10693SK01	SIZE D	REV. A
DESIGN: D. JOHNSON			



**LEGEND**

- DWELLING
- BUILDING OCCUPIED BY 20+
- INDUSTRIAL INSTALLATION
- CLASS 2 - CSA Z662-11
- POTENTIAL IMPACT RADIUS (PIR)

WEST 1/2 LOT 19, CONCESSION 10 O'NEIL (JAMES, DOUGLAS)	EAST 1/2 LOT 18, CONCESSION 10 JIM O'NEIL ENTERPRISES LTD.	WEST 1/2 LOT 17, CONCESSION 10 DEGURSE (JAMES WILLIAM)	WEST 1/2 LOT 17, CONCESSION 10 STOREY (ALLAN HARRISON, DIANE MARION)	EAST 1/2 LOT 17, CONCESSION 10 STOREY (ALLAN HARRISON, DIANE MARION)	WEST 1/2 LOT 16, CONCESSION 10 DEGURSE (JAMES WILLIAM)
WEST 1/2 LOT 19, CONCESSION 9 SMITH (MYRTLE MAY, OLIVER WESLEY, JANET)	EAST 1/2 LOT 18, CONCESSION 9 JARVIS (ROBERT GILBERT)	WEST 1/2 LOT 17, CONCESSION 9 McKELLAR (HOWARD ROSS, MONICA MAUREEN)	WEST 1/2 LOT 17, CONCESSION 9 McKELLAR (HOWARD ROSS)	EAST 1/2 LOT 17, CONCESSION 9 McKELLAR (JOHN STUART, BERRY, MARY LOUISE)	WEST 1/2 LOT 16, CONCESSION 9 JARVIS (ROBERT) & DONAHUE (GAYLE)



**CORUNNA 2<sup>nd</sup> FEED SYSTEM  
LINE 51 - NPS12  
CLASS STUDY ASSESSMENT  
SHEET 3 OF 3**

NO.	DATE	DRW.	CHK.	ENG.	REVISIONS	NO.	DATE	DRW.	CHK.	ENG.	REVISIONS
A	15.04.29	CPJ	DJ	DJ	ISSUED FOR REVIEW (25207)						

- REFERENCE DRAWINGS**
1. TSSA FS-196-12 OIL AND GAS PIPELINE SYSTEMS CODE ADOPTION DOCUMENT AMENDMENT, NOV, 01, 2012.
  2. CSA-Z662 OIL AND GAS PIPELINE SYSTEMS, 2011.

**MIG ENGINEERING (2011) LTD.**  
PROJECT MANAGERS, ENGINEERS  
SURVEYORS, MAPPERS

519.337.8000

DATE: 2015.04.29	SCALE: 1" = 150'-0"	CAD FILE: 10693SK01.dwg	MICROF
DRN: CPJ	DRAWING NUMBER	<b>10693SK01</b>	SIZE
CHKD: DJ	DESIGN: D. JOHNSON		D
			REV. A