



Lorraine Chiasson
Regulatory Coordinator
Regulatory Affairs

tel 416 495 5499
egdregulatoryproceedings@enbridge.com

Enbridge Gas Distribution
500 Consumers Road
North York, Ontario M2J 1P8
Canada

October 27, 2015

VIA COURIER, RESS AND EMAIL

Ms. Kristen Walli
Board Secretary
Ontario Energy Board
2300 Yonge Street
Suite 2700
Toronto, ON
M4P 1E4

**Re: Enbridge Gas Distribution Inc. ("Enbridge")
EB-2011-0270 – Regional Municipality of York – Pipeline Replacement Project
Conditions of Approval – Final Monitoring Report**

On October 11, 2011 the Ontario Energy Board issued its Decision and Order for the above noted proceeding, which included Conditions of Approval for the project. As part of the Conditions of Approval, Enbridge is required to file the Final Monitoring Report for the project 15 months after the in-service date. The final in-service date was July 31, 2014 which requires Enbridge to file the Final Monitoring Report by October 2015.

Enbridge has completed the assessment of the area and enclosed please find the final monitoring report for the project.

If you have any questions, please contact the undersigned.

Yours truly,

[original signed]

Lorraine Chiasson
Regulatory Coordinator

cc: Zora Crnojacki, OPCC Chair
Pascale Duguay, Manger, Natural Gas Applications, Ontario Energy Board (via courier and email)

**ENBRIDGE GAS DISTRIBUTION INC.
POST-CONSTRUCTION
FINAL POST-CONSTRUCTION ENVIRONMENTAL MONITORING REPORT
Regional Municipality of York Pipeline Replacement Project
EB-2011-0270**

Prepared by
Enbridge Gas Distribution Inc.
October 16, 2015

Table of Contents

Description

1.0 Introduction	Page 1
2.0 Project Description	Page 3
3.0 Environmental Inspection	Page 3
4.0 Construction Effects and Mitigation Measures	Page 4
5.0 Residual Issues	Page 4
6.0 Landowner Comments	Page 4
7.0 Summary	Page 5

Appendices

APPENDIX A: PIPELINE ROUTE MAP	Page 6
APPENDIX B: PHOTO LOG (October 7, 2015)	Page 8

1.0 Introduction

In October of 2011 the Ontario Energy Board (“OEB”) under docket number EB-2011-0270 granted Enbridge Gas Distribution Inc. (“Enbridge”) an exemption from a Leave to Construct on a section of natural gas pipeline. The project consisted of the replacement of 1200 metres of NPS 4 and 1200 metres of NPS 8 Extra High Pressure (XHP) steel pipeline with the installation of 1200 metres of NPS 12 XHP steel pipeline (12-inch outer diameter) in the Town of Markham and the Town of Whitchurch-Stouffville, within the Regional Municipality of York, Ontario (“Replacement Project”). The relocation was requested by the Regional Municipality of York (“Region”) as they were planning to upgrade the Ninth Line from two lanes to four lanes, and the two pipelines were in direct conflict with the Region’s proposed road widening.

Prior and subsequent to obtaining approval, Enbridge conducted the following studies to identify potential impacts resulting from construction and prepare mitigative measures to minimize environmental and socio-economic impacts.

<u>Report Title</u>	<u>Conducted by:</u>	<u>Date</u>
Proposed Relocation for Ninth Line, Markham and Whitchurch-Stouffville Environmental Screening Report	Enbridge Gas Distribution Inc.	July 2011
Geotechnical Investigation Proposed Pipeline Ninth Line, Between Markham Gate Station and Hoover Park Drive, Markham/Whitchurch-Stouffville, ON	Stantec Consulting Ltd.	April 2012

Construction of the Replacement Project began on November 19, 2012. The first part of the pipeline was energized on April 3, 2013¹ and the final section was energized on July 31, 2014. .

This report has been prepared in accordance with OEB EB-2011-0270 Board Staff Proposed Conditions of Approval as described below:

¹ The date that was originally reported to the OEB was April 4, 2013, but this date was incorrect. The correct date for the first hydrostatic test is April 3, 2013.

- 3.1 Both during and after construction, Enbridge shall monitor the impacts of construction, and shall file four copies of both an interim and a final monitoring report with the Board. The interim monitoring report shall be filed within six months of the in-service date, and the final monitoring report shall be filed within fifteen months of the in-service date. Enbridge shall attach a log of all complaints that have been received to the interim and final monitoring reports. The log shall record the times of all complaints received, the substance of each complaint, the actions taken in response, and the reasons underlying each action.
- 3.2 The interim monitoring report shall confirm Enbridge adherence to Condition 1.1 and shall include a description of the impacts noted during construction and the actions taken or to be taken to prevent or mitigate the long-term effects of the impacts of construction. This report shall describe any outstanding concerns identified during construction.
- 3.3 The final monitoring report shall describe the condition of any rehabilitated land and the effectiveness of the mitigation measures undertaken. The results of the monitoring programs and analysis shall be included and any recommendations made as appropriate. Any deficiency in compliance with any of the Conditions of Approval shall be explained.

This report is limited to items that have been identified prior to October 7, 2015. An interim report was filed with the Board on May 27, 2015. This report will not review the items previously covered in detail, but will update on outstanding items, and disturbed or impacted areas due to Enbridge's construction activities. Enbridge has revisited these areas to ensure they are restored to their original state or better and does not foresee any future issues related to Enbridge's construction.

2.0 Project Description

The replacement was initiated by the Region's road widening project along Ninth Line in Markham and Whitchurch-Stouffville, Ontario. The reasons for replacing two smaller diameter pipes with one larger diameter pipe instead of a like-for-like replacement were explained in the application.² The Replacement Project is comprised of NPS 12 steel pipe and is located in Markham and Whitchurch-Stouffville, Ontario. It begins at the Enbridge Markham Gate Station on the east side of Ninth Line and immediately crosses beneath Ninth Line to the west side. The pipeline then proceeds north on Ninth Line, proceeds west on 19th Avenue and ties in to an existing pipeline on 19th Avenue. The pipeline is approximately 1.2 kilometers (km) in length. It is important to note that the intersection of 19th Avenue and Ninth Line have been entirely realigned due to the Region's road widening project. Appendix A shows the constructed pipeline within a regional context.

3.0 Environmental Inspection

In order to ensure that environmental commitments were honoured and that the best industry practices were used, a full time Chief Inspector was onsite. In general, the duties of the Chief Inspector included the following items:

- provide advice to the Project Manager, Construction Inspectors, and all construction personnel regarding compliance with environmental legislation, regulations and industry standards;
- provide advice regarding adherence to environmental specifications and commitments made in the previously mentioned documents and to regulatory agencies, including the OEB;
- provide advice on erosion protection measures to be taken in sensitive locations in vicinity of watercourse crossing;
- act as a liaison with environmental regulators, government agencies and interest groups;
- provide immediate advice regarding spill prevention and contingency; and,

² EB-2011-0270 Pre-filed evidence Exhibit A Tab 2 Schedule 1

- ensure appropriate waste disposal of any hazardous construction wastes.

An Enbridge Environmental Specialist also conducted routine inspections of the ongoing construction to identify environmental issues which needed to be addressed and communicated these to the Project Manager.

4.0 Construction Effects and Mitigation Measures

Construction effects and mitigation measures which were implemented to minimize the potential effects from the construction of the Regional Municipality of York Pipeline Replacement Project were documented in Table 1 in the interim report that was filed May 27, 2015. All activities were conducted in adherence to the contract documentation and Enbridge Construction Policies and Procedures.

5.0 Residual Issues

Overall, construction activities were carried out with a high level of respect for the environment.

No settlement issues were identified as part of the settlement monitoring plan at the railway crossing and the monitoring points are in the process of being decommissioned.

Since the pipeline Right-Of-Way (R.O.W) is located within the road allowance, there may, in the future, be some degradation caused by vehicular traffic and littering that is not a result of construction.

Areas affected by Enbridge's work were immediately made safe and final restoration was completed by the Region since their road widening work took place afterward. The Region has confirmed that their road widening project is complete.

6.0 Landowner Comments

No landowner comments were received during the duration of this project.

7.0 Summary

This Final Post-Construction Environmental Monitoring Report has been prepared in accordance with the OEB Decision Docket No.EB-2011-0270. It documents construction and clean-up activities conducted in the summer and fall of 2014. In general, measures implemented during construction and clean-up have been successful. There are no outstanding issues.

APPENDIX A
PIPELINE ROUTE MAP

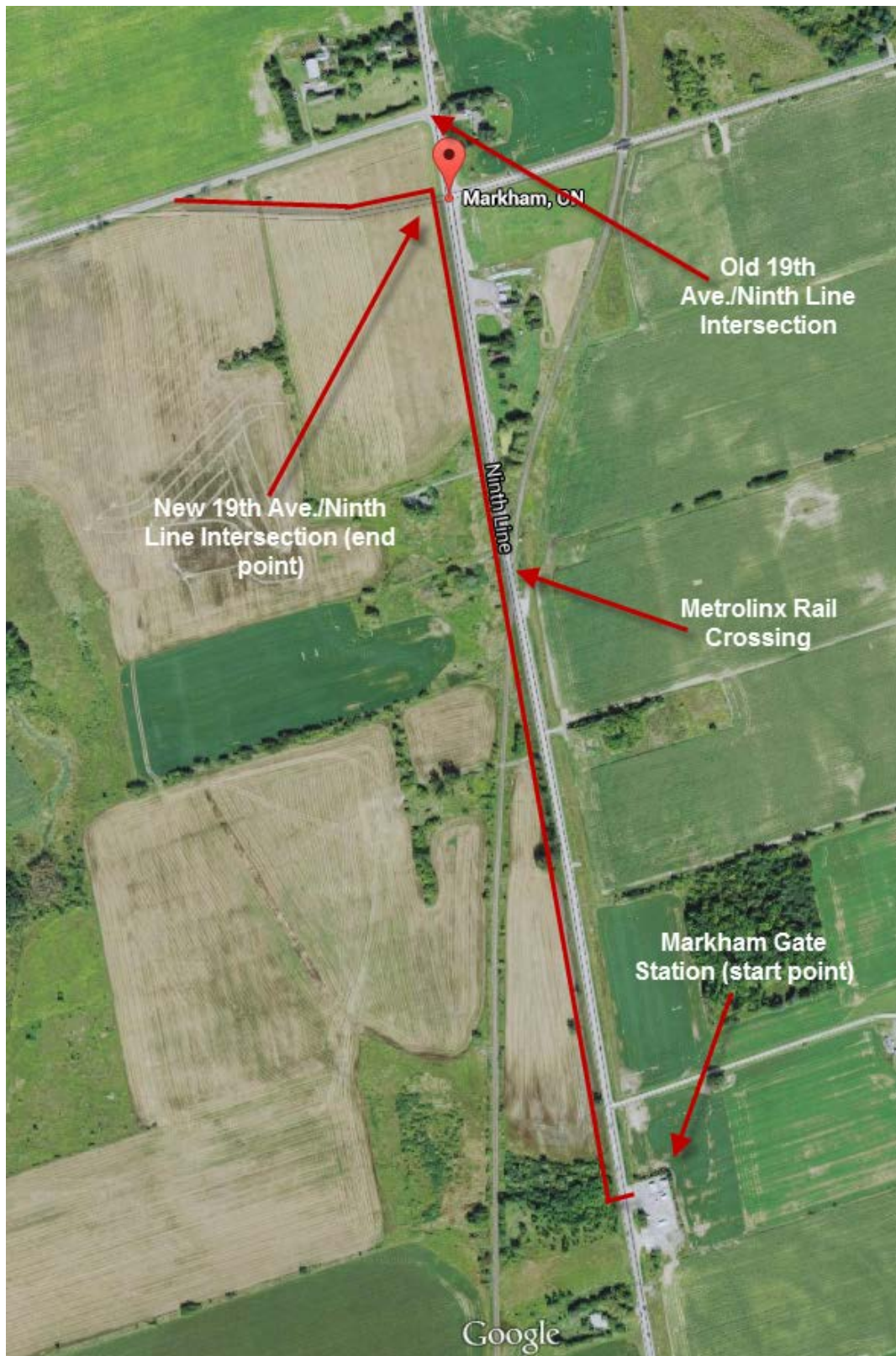


Figure 1: Regional Municipality of York Pipeline Replacement Project Pipeline Route

APPENDIX B
PHOTO LOG
(October 7, 2015)



Photo 1: East side of Ninth Line north of Markham Gate Station at watercourse crossing, looking east



Photo 2: East side of Ninth Line north of Markham Gate Station at watercourse crossing, looking north



Photo 3: West side of Ninth Line directly across from Markham Gate Station, looking south



Photo 4: West side of Ninth Line just south of rail crossing, looking south



Photo 5: West side of Ninth Line just south of rail crossing, looking north



Photo 6: South side of 19th Avenue at Ninth Line, looking southeast



Photo 7: South side of 19th Avenue at Ninth Line, looking north



Photo 8: West of Ninth Line on north side of 19th Avenue, looking west



Photo 9: West of Ninth Line on north side of 19th Avenue (end point), looking northwest