

# EB-2011-0056

## Lower Mattagami Transmission Line

### Monitoring Report

---

This report is to satisfy sections 3.1 and 3.2 of the Conditions of Approval included as Appendix A to the EB-2011-0056 Decision and Order (Leave to Construct application for transmission line). This monitoring report describes construction impacts and provides a log of comments or complaints received during and after the construction of the line.

### Background

As part of the Lower Mattagami River Project undertaken by Ontario Power Generation (“OPG”), approximately 3 km of 230 kilovolt (“kV”) line was constructed to connect the new Smoky Falls 2 Generating Station (“GS”) to the Hydro One transmission grid. The transmission line was constructed consistent with the plan described in OPG’s EB-2011-0056 application materials. The new line traverses OPG’s existing water power lease and runs in parallel to an existing Hydro One 115 kV transmission line. A new switchyard was constructed adjacent to the new OPG power house at Smoky Falls 2 GS, as well as where the new line is connected to Hydro One’s existing 230 kV transmission infrastructure.

A new access road was constructed adjacent to the new line to enable access to the new switchyard near the Hydro One connection for maintenance and operational purposes.

The pictures below show the transmission line and site after construction was completed.

### Construction Impacts

The line was constructed in compliance with the Conditions of Approval. All construction activities associated with building the 230 kV line and access road were carried out within the permanently cleared areas, as shown in Figures 1 and 2, therefore no land restoration was required. Moreover, no impactive spills were recorded during the construction of the facilities. No ongoing or outstanding concerns related to the construction of the facilities have been identified.

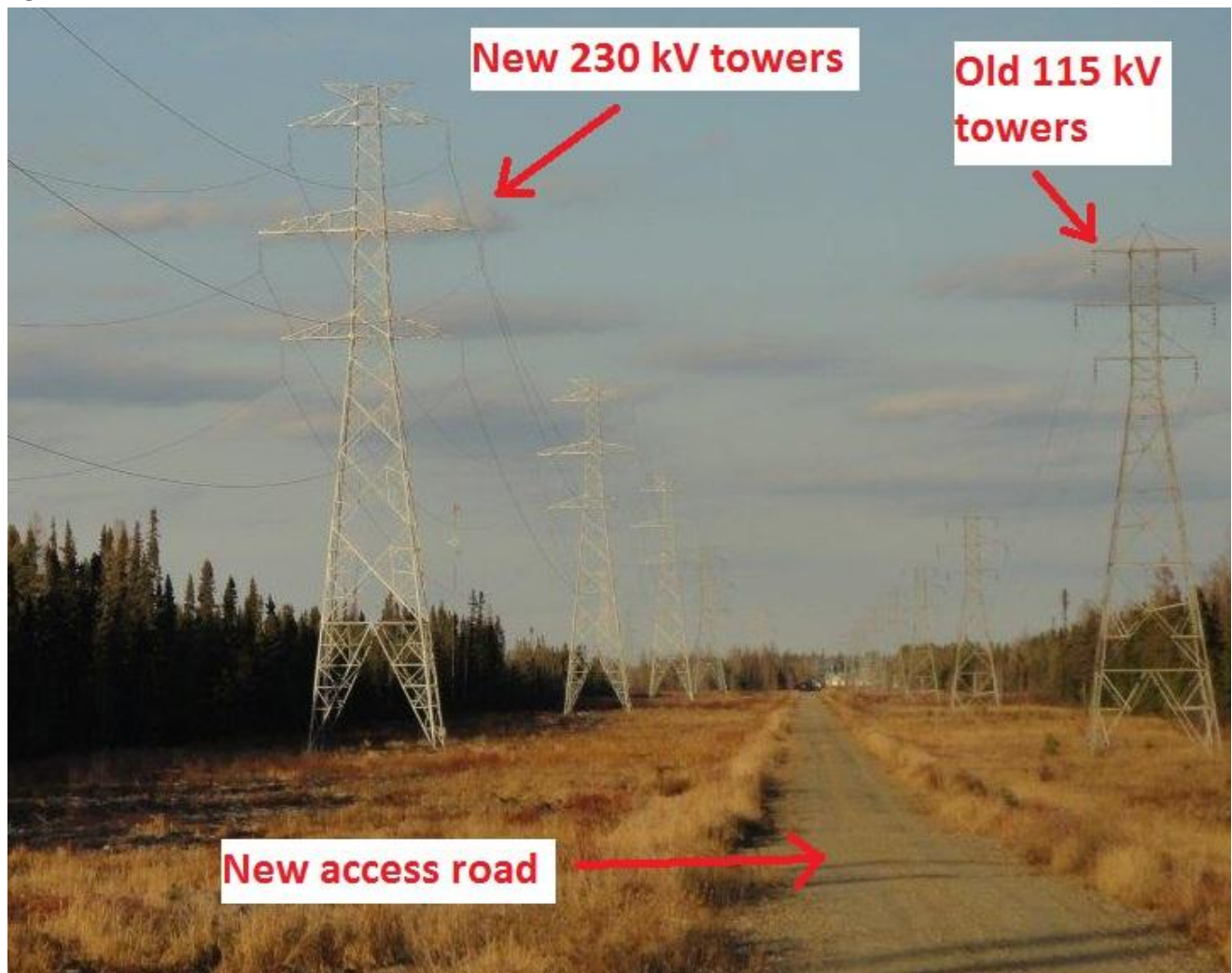
### Comments and Complaints Log

No comments or complaints from members of the public or any other groups/agencies were received during the construction of the line or within 12 months after the completion of construction of the line.

Figure 1: Aerial view of the entire 230 kV line.



Figure 2: New towers and access road.



**Figure 3: New switch yard near the Hydro One 230 kV connection point.**





Figure 4: New access road.

