

October 24, 2016

**RESS**

Ms. Kirsten Walli  
Board Secretary  
Ontario Energy Board  
2300 Yonge Street, 27<sup>th</sup> Floor  
Toronto, ON M4P 1E4

Dear Ms. Walli,

**Re: Union Gas Limited (“Union”)  
Conditions of Approval #4  
2016 Sudbury Replacement Project  
Board File # EB-2016-0122**

This letter is to inform the Ontario Energy Board of a change in construction on the above captioned project.

For the western section of this project, Union Gas’ original proposal was to remove the existing NPS 10 pipeline and replace it with a new NPS 12 pipeline. For a short section (approximately 20 meters), Union was not able to remove the existing pipeline and instead abandoned this short section in place. A map showing the general location of the abandoned pipe is attached.

When the original pipeline was constructed, it was buried at a depth of approximately 1 meter. Since the 1950’s, a large amount of fill has been brought into the area both for the construction of the houses adjacent to the pipeline easement, and to level the area so that drainage could be controlled. With this additional fill having been placed over the easement, the original pipe is now buried at a depth of up to 6 meters.

When Union was attempting to remove the existing pipeline to replace the pipeline, the trench was slumping when Union was digging at a depth of 5.2 metres. Union had a concern that the slumping could impact the existing NPS 12 pipeline, a buried Hydro line and vault, and garden sheds that were constructed on the private properties adjacent to easement.

To ensure the integrity of the existing NPS 12 pipeline and the safety of the construction crew, Union decided to abandon the existing pipe in place, and install the new pipeline at a depth of 1.5 meters.

The property where the existing pipe will be abandoned in place is owned by the City of Greater Sudbury ("City"), Union has discussed this issue with the City and they have agreed to grant Union a second easement.

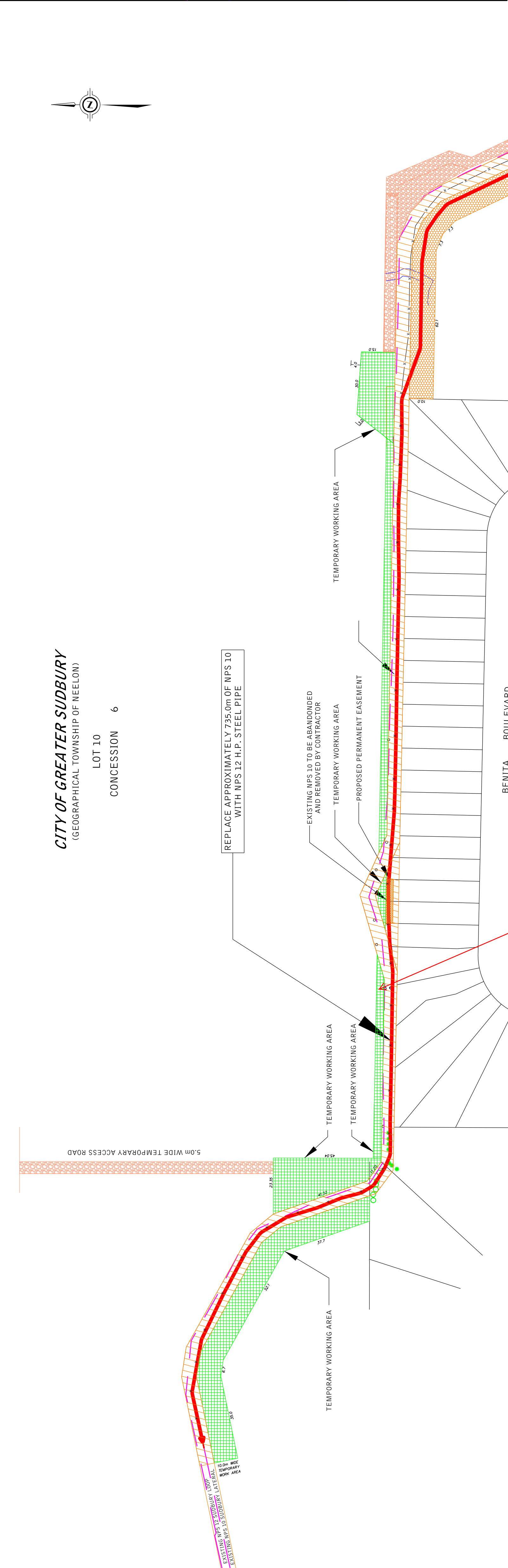
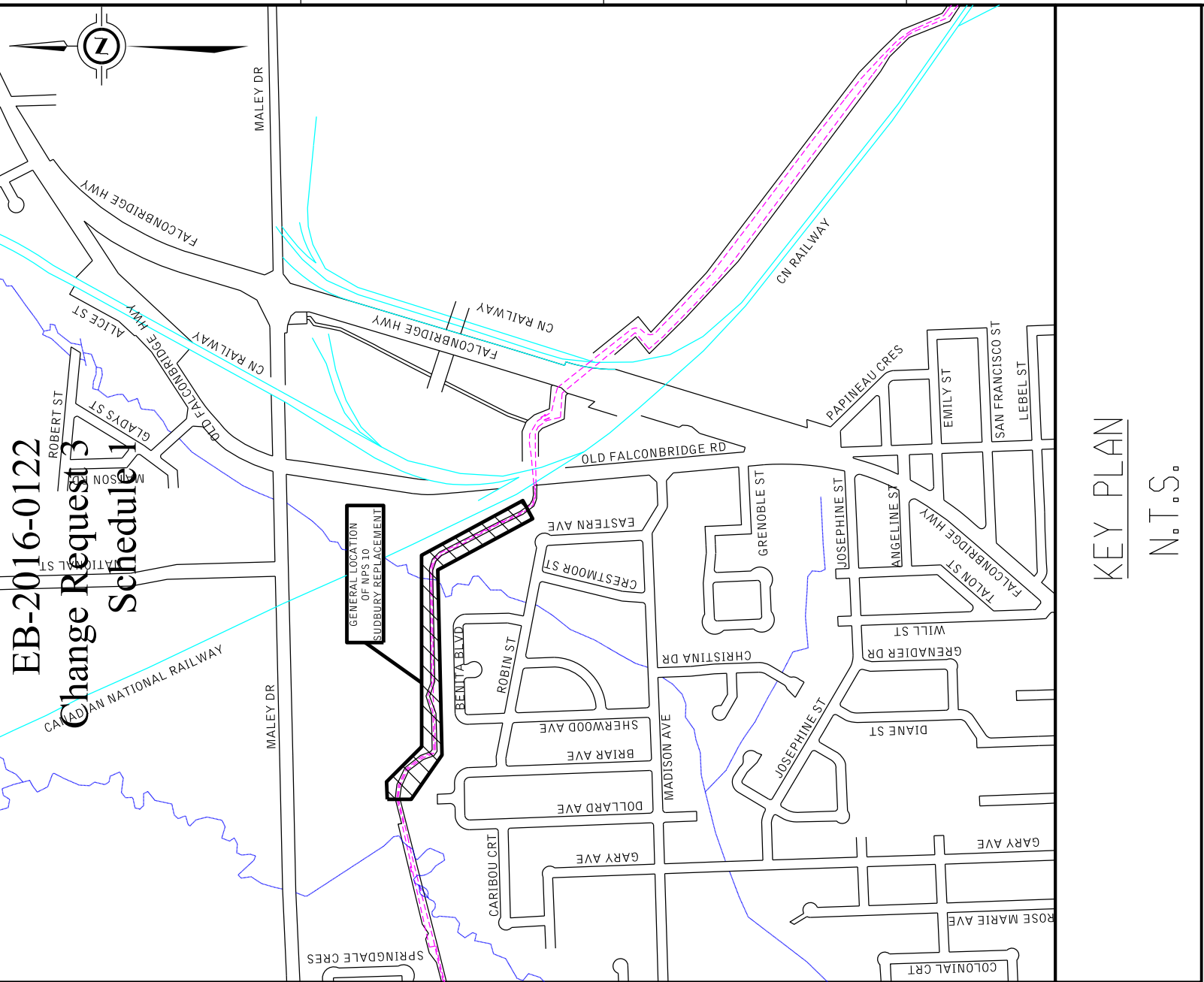
The pipe that has been abandoned in place has been abandoned consistent with the TSSA guidelines.

In the event that you have any questions or would like to discuss in more detail, please do not hesitate to contact me at 519-436-5457.

Sincerely,

W. T. (Bill) Wachsmuth, RPF  
Senior Administrator, Regulatory Projects

cc: Ceiran Bishop, OEB  
Pascale Duguay, OEB  
Zora Crnojacki, OEB  
Ian Mondrow, Gowling WLG  
Shahrazad Rahbar, IGUA  
Cindy Kou, Gowling WLG



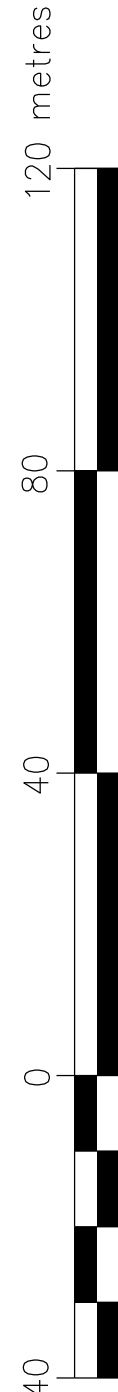
No.	DATE	BY	APPRO	REMARKS
REVISIONS				

**unongas**  
A Spectra Energy Company

**NPS 10 SUBBURY SECTION 2 REPLACEMENT PROJECT**  
PROPOSED NPS 12 SUBBURY LATERAL  
BENITA BOULEVARD / RAINBOW CONCRETE

DRWN BY: K.Y. CASERIN  
DATE: 2015-02-10  
CHECKED BY: K.Y. CASERIN  
DATE: 2015-02-10  
APPROVED BY: K.Y. CASERIN  
DATE: 2015-02-10

PL1194-UEB  
FILE REVISION DATE: 2015-02-10  
SHEET No.: 1 OF 1  
SYSTEM: 1 OF 1  
DRAWING No.: PL1194



ALL DIMENSIONS ARE IN METRES

WORK AREA CO-ORDINATES: LONG: -80.914962° LAT: 46.534107°