

McCarthy Tétrault LLP
PO Box 48, Suite 5300
Toronto-Dominion Bank Tower
Toronto ON M5K 1E6
Canada
Tel: 416-362-1812
Fax: 416-868-0673

Gordon M. Nettleton
Partner
Email: gnettleton@mccarthy.ca

**mccarthy
tétrault**

December 8, 2016

VIA RESS AND COURIER

Kirsten Walli
Board Secretary
Ontario Energy Board
P.O. Box 2319
2300 Yonge Street, 27th Floor
Toronto, Ontario M4P 1E4

Dear Ms. Walli:

**RE: EB-2016-0160 Hydro One Networks Inc. ("Hydro One") Transmission Rates
Application – Response to Undertaking J8.2**

Hydro One's response to Undertaking J8.2 is enclosed.

Yours truly,

McCarthy Tétrault LLP

Per:



For: Gordon M. Nettleton

GMN

UNDERTAKING – J8.2

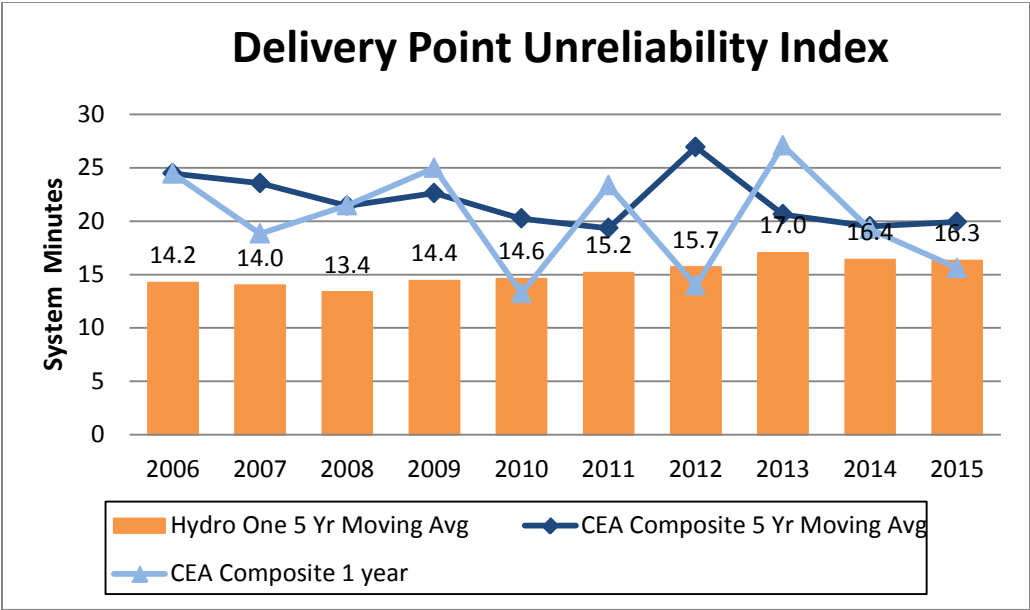
Undertaking

To make best efforts to create a comparison to the five-year rolling average

Response

Below are the charts for the Hydro One five year moving average compared to the Canadian Electricity Association (“CEA”) five year average for Figures 11 to 13 inclusive, as found in Exhibit B1, Tab 1, Schedule 3.

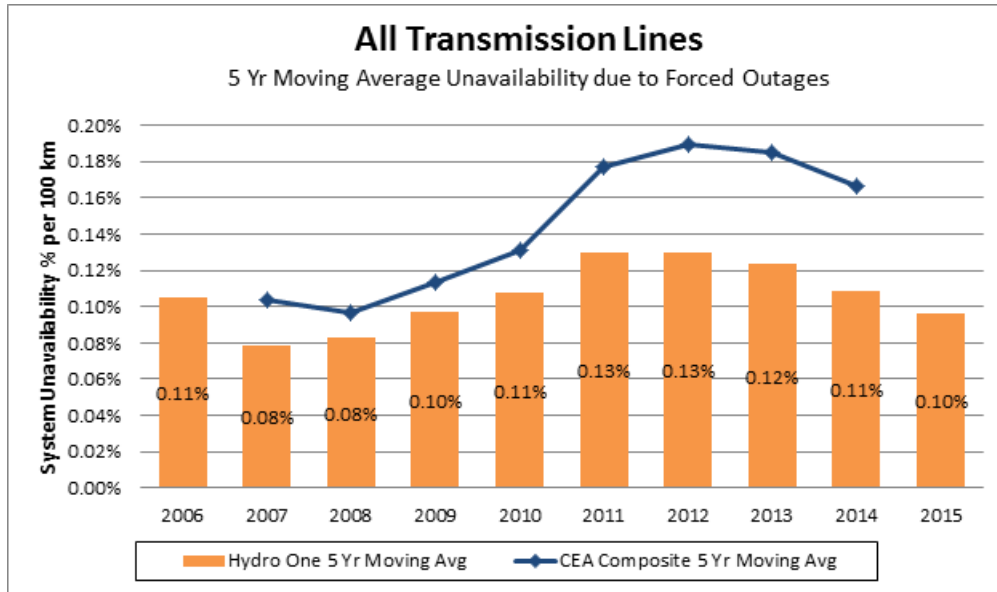
Figure 11: Comparison of the Hydro One Five Year Moving Average for the Delivery Point Unreliability Index as Compared to the CEA Composite



Note: For Figure 11 above, it should be noted that the chart provided in Exhibit B1, Tab 1, Schedule 3 contains the CEA composite 1 year results. These results are included here to provide continuity back to the exhibit. In addition, in response to the request, the Hydro One 5 year moving average in comparison to the CEA composite 5 year moving average is shown on the same chart.

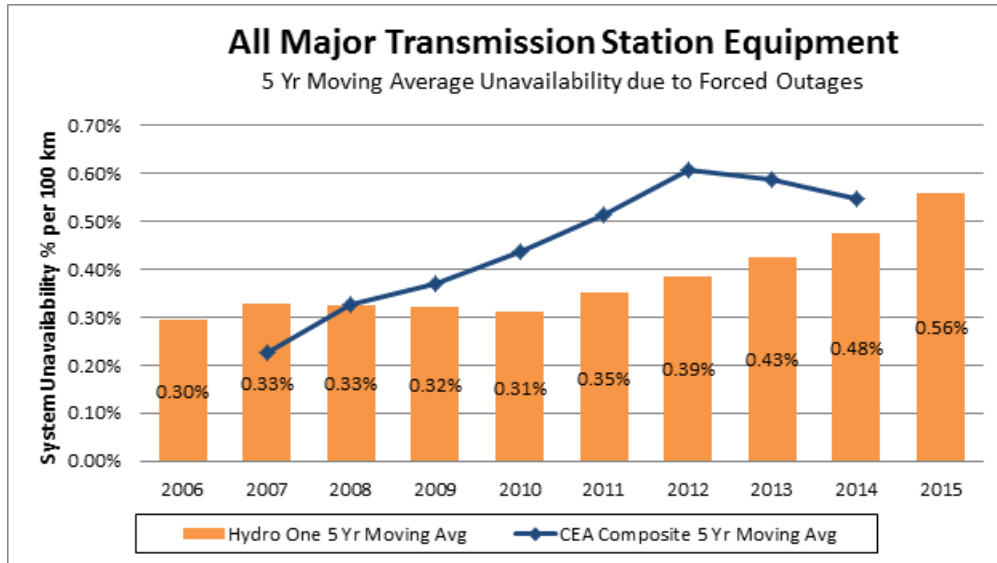
1
2
3

Figure 12: Hydro One Five Year Moving Average of the Unavailability of Transmission Lines as Compared to the CEA Composite Group



4
5
6
7
8

Figure 13: Hydro One Five Year Moving Average of the Unavailability of Major Transmission Station Equipment as Compared to the CEA Composite Group



9