

Hydro One Networks Inc.

7th Floor, South Tower
483 Bay Street
Toronto, Ontario M5G 2P5
www.HydroOne.com

Tel: (416) 345-5393
Fax: (416) 345-5866
Joanne.Richardson@HydroOne.com

Joanne Richardson

Director – Major Projects and Partnerships
Regulatory Affairs



BY COURIER

May 10, 2017

Ms. Kirsten Walli
Board Secretary
Ontario Energy Board
Suite 27, 2300 Yonge Street
P.O. Box 2319
Toronto, ON
M4P 1E4

Dear Ms. Walli:

**Load Transfer Elimination Application – A Service Area Amendment & Asset Sale Application
Between Hydro One Networks Inc. and Halton Hills Hydro Inc.**

In accordance with the Distribution System Code amendments of December 21, 2015, Hydro One Networks Inc. and Halton Hills Hydro Inc.. are jointly applying to the Ontario Energy Board (“Board”) for approval to amend the service areas of both distributors such that existing load transfer arrangements between the two LDCs are eliminated.

Should you have any questions on this application, please contact Pasquale Catalano at (416) 345-5405 or via email at Pasquale.Catalano@HydroOne.com.

Sincerely,

ORIGINAL SIGNED BY JOANNE RICHARDSON

Joanne Richardson

Attachment

cc. Tracy Rehberg-Rawlingson



Ontario Energy Board

Elimination of Load Transfer Arrangements Between Hydro One Networks Inc. and Halton Hills Hydro Inc.

Combined Service Area Amendment and Asset Transfer Application

May 11, 2017

PART I: SERVICE AREA AMENDMENT

1.1 Basic Facts

As a result of the Distribution System Code amendments of December 21, 2015, EB-2015-0006, Hydro One Networks Inc. ("Hydro One") and Halton Hills Hydro Inc. ("Halton Hills") are jointly applying to the Ontario Energy Board ("OEB") for approval to amend the service areas of both distributors such that existing load transfer arrangements between the two LDCs are eliminated.

1.2 Identification of the Parties

1.2.1 Applicant

(Identify whether the applicant is a geographic and/or physical distributor)

Name of Applicant Hydro One Networks Inc.	Licence Number ED-2003-0043
Address 483 Bay Street, 7 th Floor, South Tower Toronto, ON M5G 2P5	Telephone Number 416-345-5405
	Facsimile Number 416-345-5866
	E-mail Address Regulatory@Hydroone.com
Contact Person Pasquale Catalano Regulatory Analyst	Telephone Number As listed above.
	Facsimile Number As listed above.
	E-mail Address Pasquale.Catalano@Hydroone.com

1.2.2 Co-Applicant or Other Distributor to the Service Area Amendment Application

Name of Co-Applicant or Other Distributor Halton Hills Hydro Inc.	Licence Number ED-2002-0552
Address: 43 Alice St. Halton Hills (Acton), ON L7J 2A9	Telephone Number 519-853-3700
	Facsimile Number 519-853-5592
	E-mail Address: RegulatoryAffairs@haltonhillshydro.com
Contact Person: Tracy Rehberg-Rawlingson	Telephone Number 519-853-3700 ext. 257
	Facsimile Number As listed above
	E-mail Address tracyr@hatonhillshydro.com

1.3 Description of Proposed Service Area

1.3.1 Provide a detailed service area description of the area(s) that is subject to the SAA and how the amendments should be reflected in Schedule 1 of the licence(s) of the distributor(s).

The proposed amendments are premise-specific. Once this application is approved, Hydro One's licence will include all of the premises in Attachment 2. These will be removed from Halton Hills's licence. The premises specified in Attachment 1 will be included in Halton Hills's licence, once the application is approved.

Halton Hills Hydro Inc. Licence ED-2002-0552 should be amended as follows

SCHEDULE 1 DEFINITION OF DISTRIBUTION SERVICE AREA

This Schedule specifies the area in which the Licensee is authorized to distribute and sell electricity in accordance with paragraph 8.1 of this Licence.

1. The Town of Halton Hills as of December 31, 1980.

a. Excluding the customers located at the following addresses:

- 11106 Winston Churchill Blvd, Halton Hills, ON, L7G 4S7
- 11154 Winston Churchill Blvd, Halton Hills, ON, L7G 4S7
- 11180 Winston Churchill Blvd, Halton Hills, ON, L7G 4S7
- 11196 Winston Churchill Blvd, Halton Hills, ON, L7G 4S7
- 11204 Winston Churchill Blvd, Halton Hills, ON, L7G 4S7
- 11354 Winston Churchill Blvd, Halton Hills, ON, L7G 4S7
- 11722 Winston Churchill Blvd, Halton Hills, ON, L7G 4S7
- 11808 Winston Churchill Blvd, Halton Hills, ON, L7G 4S7
- 11814 Winston Churchill Blvd, Halton Hills, ON, L7G 4S7
- 11878 Winston Churchill Blvd, Halton Hills, ON, L7G 4S7
- 11890 Winston Churchill Blvd, Halton Hills, ON, L7G 4S7
- 11898 Winston Churchill Blvd, Halton Hills, ON, L7G 4S7
- 11944 Winston Churchill Blvd, Halton Hills, ON, L7G 4S7
- 11992 Winston Churchill Blvd, Halton Hills, ON, L7G 4S7
- 11998 Winston Churchill Blvd, Halton Hills, ON, L7G 4S7
- 12302 10th Line, Halton Hills, ON, L7G 4S7
- 12496 Winston Churchill Blvd, Halton Hills, ON, L0P 1N0
- 12508 Winston Churchill Blvd, Halton Hills, ON, L0P 1N0
- 12618 Winston Churchill Blvd, Halton Hills, ON, L0P 1N0
- 12680 Winston Churchill Blvd, Halton Hills, ON, L0P 1N0
- 12688 Winston Churchill Blvd, Halton Hills, ON, L0P 1N0
- 12822 Winston Churchill Blvd, Halton Hills, ON, L0P 1N0
- 12900 Winston Churchill Blvd, Halton Hills, ON, L0P 1N0
- 12916 Winston Churchill Blvd, Halton Hills, ON, L0P 1N0
- 12938 Winston Churchill Blvd, Halton Hills, ON, L0P 1N0
- 12964 Winston Churchill Blvd, Halton Hills, ON, L0P 1N0
- 13070 Winston Churchill Blvd, Halton Hills, ON, L0P 1N0
- 13080 Winston Churchill Blvd, Halton Hills, ON, L0P 1N0
- 13086 Winston Churchill Blvd, Halton Hills, ON, L0P 1N0
- 13096 Winston Churchill Blvd, Halton Hills, ON, L0P 1N0
- 13102 Winston Churchill Blvd, Halton Hills, ON, L0P 1N0
- 13112 Winston Churchill Blvd, Halton Hills, ON, L0P 1N0
- 13116 Winston Churchill Blvd, Halton Hills, ON, L0P 1N0
- 13140 Winston Churchill Blvd, Halton Hills, ON, L0P 1N0
- 13162 Winston Churchill Blvd, Halton Hills, ON, L0P 1N0
- 13202 Winston Churchill Blvd, Halton Hills, ON, L0P 1N0

	<ul style="list-style-type: none"> • 13216 Winston Churchill Blvd, Halton Hills, ON, L0P 1N0 • 14452 Winston Churchill Blvd, Halton Hills, ON, L0P 1N0 • 14572 Winston Churchill Blvd, Halton Hills, ON, L0P 1N0 • 14574 Winston Churchill Blvd, Halton Hills, ON, L0P 1N0 • 14576 Winston Churchill Blvd, Halton Hills, ON, L0P 1N0 • 14578 Winston Churchill Blvd, Halton Hills, ON, L0P 1N0 • 14584 Winston Churchill Blvd, Halton Hills, ON, L0P 1N0 • 14592 Winston Churchill Blvd, Halton Hills, ON, L0P 1N0
	2. The property having the municipal address of 7751 Winston Churchill Blvd in the City of Brampton
	3. The lands located on Winston Churchill Blvd., between Hwy 401 and Meadowpine Blvd. with the civic address number 7575.
	4. The customers located at the following premise addresses in the The Town of Erin, formerly known as the Township of Erin, Village of Erin, as at December 31, 1997. <ul style="list-style-type: none"> • 4901 Trafalgar Road, Erin, ON, N0B 1H0 • 4902 6th Line, Erin, ON, L7J 2L8 • 4919 6th Line, Erin, ON, L7J 2L8 • 8704 Erin Halton Hills Townline, Erin, ON, L7J 2L7 • 8718 Erin Halton Hills Townline, Erin, ON, L7J 2L7 • 8750 Erin Halton Hills Townline, Erin, ON, L7J 2L7 • 8818 Erin Halton Hills Townline, Erin, ON, L7J 2L9 • 8832 Erin Halton Hills Townline, Erin, ON, L7J 2L9 • 8840 Erin Halton Hills Townline, Erin, ON, L7J 2L9 • 8848 Erin Halton Hills Townline, Erin, ON, L7J 2L9 • 8852 Erin Halton Hills Townline, Erin, ON, L7J 2L9 • 8858 Erin Halton Hills Townline, Erin, ON, L7J 2L9 • 8864 Erin Halton Hills Townline, Erin, ON, L7J 2L9 • 8868 Erin Halton Hills Townline, Erin, ON, L7J 2L9 • 8910 Erin Halton Hills Townline, Erin, ON, L7J 2L9 • 8912 Erin Halton Hills Townline, Erin, ON, L7J 2L9 • 8948 Erin Halton Hills Townline, Erin, ON, L7J 2L8 • 8962 Erin Halton Hills Townline, Erin, ON, L7J 2L8 • 8966 Erin Halton Hills Townline, Erin, ON, L7J 2L8 • 8976 Erin Halton Hills Townline, Erin, ON, L7J 2L8 • 8984 Erin Halton Hills Townline, Erin, ON, L7J 2L8 • 8986 Erin Halton Hills Townline, Erin, ON, L7J 2L8 • 9024 Erin Halton Hills Townline, Erin, ON, L7J 2L8 • 9030 Erin Halton Hills Townline, Erin, ON, L7J 2L8 • 9032 Erin Halton Hills Townline, Erin, ON, L7J 2L8 • 9050 Erin Halton Hills Townline, Erin, ON, L7J 2L8 • 9062 Erin Halton Hills Townline, Erin, ON, L7J 2L8 • 9092 Erin Halton Hills Townline, Erin, ON, L7J 2L8 • 9098 Erin Halton Hills Townline, Erin, ON, L7J 2L8 • 9176 Erin Halton Hills Townline, Erin, ON, L7J 2L8 • 9188 Erin Halton Hills Townline, Erin, ON, L7J 2L8 • 9206 Erin Halton Hills Townline, Erin, ON, L7J 2L8 • 9212 Erin Halton Hills Townline, Erin, ON, L7J 2L8 • 9224 Erin Halton Hills Townline, Erin, ON, L7J 2L8 • 9244 Erin Halton Hills Townline, Erin, ON, L7J 2L8 • 9248 Erin Halton Hills Townline, Erin, ON, L7J 2L8

- 9314 Erin Halton Hills Townline, Erin, ON, N0B 1H0
- 9332 Erin Halton Hills Townline, Erin, ON, N0B 1H0
- 9346 Erin Halton Hills Townline, Erin, ON, N0B 1H0
- 9358 Erin Halton Hills Townline, Erin, ON, N0B 1H0
- 9362 Erin Halton Hills Townline, Erin, ON, N0B 1H0
- 9364 Erin Halton Hills Townline, Erin, ON, N0B 1H0
- 9366 Erin Halton Hills Townline, Erin, ON, N0B 1H0
- 9368 Erin Halton Hills Townline, Erin, ON, N0B 1H0
- 9370 Erin Halton Hills Townline, Erin, ON, N0B 1H0
- 9374 Erin Halton Hills Townline, Erin, ON, N0B 1H0
- 9376 Erin Halton Hills Townline, Erin, ON, N0B 1H0
- 9380 Erin Halton Hills Townline, Erin, ON, N0B 1H0
- 9382 Erin Halton Hills Townline, Erin, ON, N0B 1H0
- 9386 Erin Halton Hills Townline, Erin, ON, N0B 1H0
- 9404 Wellington Road 42, Erin, ON, N0B 1H0
- 9406 Wellington Road 42, Erin, ON, N0B 1H0
- 9410 Wellington Road 42, Erin, ON, N0B 1H0
- 9414 Wellington Road 42, Erin, ON, N0B 1H0
- 9416 Wellington Road 42, Erin, ON, N0B 1H0
- 9418 Wellington Road 42, Erin, ON, N0B 1H0
- 9420 Wellington Road 42, Erin, ON, N0B 1H0
- 9422 Wellington Road 42, Erin, ON, N0B 1H0
- 9424 Wellington Road 42, Erin, ON, N0B 1H0
- 9426 Wellington Road 42, Erin, ON, N0B 1H0
- 9428 Wellington Road 42, Erin, ON, N0B 1H0
- 9430 Wellington Road 42, Erin, ON, N0B 1H0
- 9432 Wellington Road 42, Erin, ON, N0B 1H0
- 9434 Wellington Road 42, Erin, ON, N0B 1H0
- 9438 Wellington Road 42, Erin, ON, N0B 1H0
- 9440 Wellington Road 42, Erin, ON, N0B 1H0
- 9454 Wellington Road 42, Erin, ON, N0B 1H0
- 9466 Wellington Road 42, Erin, ON, N0B 1H0
- 9468 Wellington Road 42, Erin, ON, N0B 1H0
- 9470 Wellington Road 42, Erin, ON, N0B 1H0

	<p>Hydro One's Distribution Licence ED-2003-0043 should be amended as follows:</p> <p><i>Remove from Schedule 1, Appendix B, Tab 1:</i></p> <p>Name of Municipality: Town of Erin</p> <p>Formerly Known As: Township of Erin, Village of Erin, as at December 31, 1997.</p> <p><i>Amend in Schedule 1, Appendix B, Tab 4:</i></p> <p>Name of Municipality: The Town of Halton Hills as of December 31, 1980.</p> <p>Formerly Known As: Same</p> <p>Area Not Served By Networks: The area served by Halton Hills Hydro Inc. as more particularly set out in Licence No. ED-2002-0552.</p> <p>Network assets within area not served by Networks: Yes</p> <p>Customers(s) within area not served by Networks: No</p> <p>Name of Municipality: Town of Erin</p> <p>Formerly Known As: Township of Erin, Village of Erin, as at December 31, 1997.</p> <p>Area Not Served By Networks: The area served by Halton Hills Hydro Inc. as more particularly set out in Licence No. ED-2002-0552.</p> <p>Network assets within area not served by Networks: Yes</p> <p>Customers(s) within area not served by Networks: No</p>
1.3.2	<p>Provide maps or diagrams of the area(s) that is the subject of the SAA application.</p> <p>Please see Attachments 3 and 4.</p>
1.3.3	<p>Provide a description of the type of physical connection(s); i.e., individual customer; residential subdivision, commercial or industrial customer.</p> <p>78 Hydro One customers are proposed to be transferred to Halton Hills:</p> <ul style="list-style-type: none"> • 67 Residential Customers • 8 General Service Customers • 1 Microfit Customer • 2 Sentinel Light Accounts <p>55 Halton Hills customers are proposed to be transferred to Hydro One:</p> <ul style="list-style-type: none"> • 41 Residential Customers • 12 General Service Customers • 1 Microfit Customer • 1 Streetlight Account

1.4 Information on Affected Load Transfer Customers

1.4.1	Provide a total number of load transfer arrangements between distributors. Section 1.3.3 addresses the majority of existing load transfer arrangements between the two distributors. Given that Halton Hills is an embedded LDC, there are some load transfer arrangements that are not being addressed by this application.
1.4.2	Provide a number of load transfers eliminated in this application. Please see 1.3.3.
1.4.3	Provide a number of customers to be transferred from Hydro One to Halton Hills. Please see 1.3.3.
1.4.4	Provide a number of customers to be transferred from Halton Hills to Hydro One. Please see 1.3.3.
1.4.5	Provide a list of affected load transfer customers. (Customer listing must include customer address, name, billing address, rate class and meter number) Please see Attachments 1 and 2 for all of the Hydro One and Halton Hills customers impacted
1.4.6	Provide written confirmation that all affected persons have been provided with specific and factual information about the service area amendment(s). Letters informing customers of the proposed amendments were sent by both Halton Hills and Hydro One to their respective customers prior to May 5, 2017.

1.5 Impacts Arising from the Amendment(s)

1.5.1

Use the table below to describe the impact on the average residential customers' total bill that arises as a result of the service area amendment(s) before and after rate mitigation is applied.

Use delivery charge on consumer's bill (including cost of losses and excluding all rate riders).

Use 750 kWh / month for the average residential consumer. Provide any additional information as required.

1.5.1 Customers moving from Halton Hills to Hydro One

The delivery charges will increase for customers moving from Halton Hills to Hydro One. Table 1 shows the delivery and total bill impacts for these customers at typical consumption levels. Please note any change that may result from the Ontario government's Fair Hydro Plan is not included in the calculations below. Once the Fair Hydro Plan is finalized, the bill impacts will be recalculated accordingly.

Table 1: Bill Impacts at Typical Consumption Levels for Customers Moving from Halton Hills (Rates effective May 1, 2017) to Hydro One (Rates effective January 1, 2017)

Monthly Consumption (kWh)	Halton Hills Hydro Inc.				Hydro One Networks				Average Monthly Delivery Impact on Total Bill (\$)
	Rate Class	Fixed Charge (\$)	Variable Charge (\$/kWh or \$/kW)*	Delivery Charge (\$)***	Rate Class	Fixed Charge (\$)	Variable Charge (\$/kWh or \$/kW)	Delivery Charge (\$)***	
750	RES	20.28	0.0094	42.38	R2	19.83	0.0374	66.23	23.85
2,000	GS<50	28.03	0.0125	89.53	GSE	27.87	0.0560	183.31	93.78
35,000	GS 50-999	85.80	4.8606	1,238.17	GSD	89.48	16.0236	2,304.49	1,066.31

* Includes low voltage charge

*** Includes RTSR charges and cost of losses.

The customers moving from Halton Hills to Hydro One will receive a monthly bill credit to offset the increase in delivery charges¹. In accordance with the Ontario Energy Board's (OEB) direction provided in "Amendments to the Distribution System Code", the credit will be calculated using each customer's average monthly consumption over the most recent 12 months at the time the application is filed for the OEB's approval. The credit will be fixed at this calculated level and remain in place as long as the customer remains the account holder.

The OEB has confirmed that a deferral account will be provided for the purpose of tracking the rate mitigation costs for future recovery.

¹ For the purpose of credit calculations, the delivery charge includes distribution charges, transmission charges and cost of losses, but excludes any rate riders as specified by the OEB in "[Amendments to the Distribution System Code, Section C \(File No.: EB-2015-0006\)](#)".

1.5.2 Customers moving from Hydro One to Halton Hills

As shown in Table 2, customers moving from Hydro One to Halton Hills will see a reduction in their monthly delivery charges. As such, no credits are required for these customers.

Table 2: Bill Impacts at Typical Consumption Levels for Customers Moving from Hydro One (Rates effective January 1, 2017) to Halton Hills (Rates effective May 1, 2017)

Monthly Consumption (kWh)	Hydro One Networks				Halton Hills Hydro Inc.				Average Monthly Delivery Impact on Total Bill (\$)
	Rate Class	Fixed Charge (\$)	Variable Charge (\$/kWh or \$/kW)	Delivery Charge (\$)**	Rate Class	Fixed Charge (\$)	Variable Charge (\$/kWh or \$/kW)*	Delivery Charge (\$)**	
750	R2	19.83	0.0374	66.23	RES	20.28	0.0094	42.38	(23.85)
2,000	GSE	27.87	0.0560	183.31	GS<50kW	28.03	0.0125	89.53	(93.78)

* Includes low voltage charge

** Includes RTSR charges and cost of losses.

1.5.2

Provide a description of any assets which may be stranded or become redundant after completion of the service area amendment(s). Please explain why these assets could not be transferred to the physical distributor.

No assets will be stranded as a result of this amendment.

1.5.3

Identify costs for stranded equipment that would need to be de-energized or removed.

This would not be applicable as there will not be any stranded assets in this case. See 1.5.2.

1.5.4

Identify any assets that will be transferred to and/or from the applicant(s). If an asset transfer is required, please complete Part II of the application form.

Please see Part 2 of this application for more details.

1.5.5

Include an estimate of the credit required for each customer to ensure there is not a negative impact on the total bill.

Table 3: Credit Amounts to Eliminate the Increase in Delivery Charges for Customers Moving from Halton Hills (Rates effective May 1, 2017) to Hydro One (Rates effective January 1, 2017)

Index	Average Monthly Consumption (kWh)	Halton Hills Hydro Inc.		Hydro One Networks		Monthly Credit (\$)
		Rate Class	Delivery Charges (\$)	Rate Class	Delivery Charges (\$)	
Cust1	333.74	Res	30.55	R2	40.91	10.36
Cust2	1,753.07	Res	70.88	R2	127.22	56.34
Cust3	1,542.15	Res	64.89	R2	114.40	49.51
Cust4	1,520.41	Res	64.27	R2	113.07	48.80
Cust5	570.4	Res	37.28	R2	55.31	18.03
Cust6	33,160.00	GS 50-999	1,149.25	GSD	2,133.56	984.31
Cust7	1,288.82	Res	57.69	R2	98.99	41.30
Cust8	3,257.90	Res	113.64	R2	218.73	105.08
Cust9	680.49	Res	40.41	R2	62.00	21.59
Cust10	576.66	Res	37.46	R2	55.69	18.23
Cust11	2,139.91	Res	81.88	R2	150.75	68.87
Cust12	1,029.07	Res	50.31	R2	83.20	32.89
Cust13	1,788.33	Res	71.89	R2	129.37	57.48
Cust14	26.33	Res	21.82	R2	22.22	0.40
Cust15	3,889.07	Res	131.58	R2	257.11	125.53
Cust16	1,573.49	Res	65.78	R2	116.30	50.52
Cust17	499.15	Res	35.25	R2	50.97	15.72
Cust18	2,191.82	Res	83.35	R2	153.90	70.55
Cust19	392.82	Res	32.23	R2	44.51	12.27
Cust20	703.66	Res	41.06	R2	63.41	22.34
Cust21	2,653.31	GS<50	109.36	GSE	233.83	124.47
Cust22	750	Res	42.38	R2	66.23	23.85
Cust23	1,024.99	Res	50.20	R2	82.95	32.75
Cust24	1,215.99	Res	55.62	R2	94.56	38.94
Cust25	1,022.24	Res	50.12	R2	82.78	32.66
Cust26	2,353.32	Res	87.94	R2	163.72	75.78
Cust27	1,000.32	Res	49.49	R2	81.45	31.95
Cust28	887.4	Res	46.29	R2	74.58	28.30
Cust29	2,685.74	Res	97.39	R2	183.94	86.55
Cust30	1,633.16	Res	67.48	R2	119.93	52.45
Cust31	1,093.74	Res	52.15	R2	87.13	34.98
Cust32	752.15	Res	42.44	R2	66.36	23.91
Cust33	996.99	Res	49.40	R2	81.25	31.85

	Cust34	839.32	Res	44.92	R2	71.66	26.74
	Cust35	323.24	Res	30.26	R2	40.28	10.02
	Cust36	399.49	GS<50	40.95	GSE	59.55	18.60
	Cust37	1,500.66	Res	63.71	R2	111.87	48.16
	Cust38	912.08	Res	46.99	R2	76.08	29.10
	Cust39	875.74	Res	45.95	R2	73.87	27.92
	Cust40	3,243.32	GS<50	127.27	GSE	279.45	152.18
	Cust41	1,137.07	GS<50	63.33	GSE	116.58	53.25
	Cust42	820.4	GS<50	53.72	GSE	92.10	38.37
	Cust43	2,744.90	GS<50	112.14	GSE	240.91	128.77
	Cust44	255.00	GS<50	36.56	GSE	48.38	11.82
	Cust45	658.99	Res	39.80	R2	60.69	20.90
	Cust46	677.57	Res	40.32	R2	61.82	21.50
	Cust47	296.24	Res	29.49	R2	38.63	9.15
	Cust48	513.4	Res	35.66	R2	51.84	16.18
	Cust49	2,354.63	Res	87.98	R2	163.80	75.82
	Cust50	8,886.65	GS<50	298.56	GSE	715.82	417.25
	Cust51	842.00	GS<50	54.38	GSE	93.77	39.39
	Cust52	3,499.07	GS<50	135.03	GSE	299.22	164.19
	Cust53	0	GS<50	28.82	GSE	28.66	0

PART II: TRANSFER OF ASSETS (S. 86(1)(b))

2.1 Description of the Assets to Be Transferred

2.1.1	<p>Provide a description of the assets that are the subject of the transaction. (Attach a detailed list of assets to be sold including value of assets)</p> <p>See Attachments 1 and 2.</p>
2.1.2	<p>Indicate where the assets are located – whether in the applicant’s service territory or in the recipient’s service territory (if applicable). Please include a map of the location.</p> <p>The assets are located within the territory that will be transferred from the geographical distributor to the physical distributor, if the application is approved. Please see Attachments 3 and 4 for maps indicating the location of the assets.</p>
2.1.3	<p>Indicate which distributor’s customers are currently served by the assets.</p> <p>Currently the assets are being used to service the geographical distributor’s customers. Once the application is approved, the assets will continue to service the same customers they currently service. The customers will be transferred from the geographical distributor to the physical distributor.</p>

2.2 Description of the Sale Transaction

2.2.1	<p>The value of the assets to be transferred shall be determined based on net book value (NBV). Attach the details of the associated cash consideration to be given and received by each of the parties to the transaction.</p> <p>Hydro One will sell the assets servicing current Hydro One Geographical Customers to Halton Hills for \$149,967.00 plus applicable taxes. A detailed breakdown of the assets is included in Attachment 1.</p> <p>Halton Hills will sell the assets servicing current Halton Hills Geographical Customers to Hydro One for \$98,949.00 plus applicable taxes. A detailed breakdown of the assets is included in Attachment 2.</p>
2.2.2	<p>Will the transfer impact any other parties (e.g. joint users of poles) including any agreements with third parties? If yes, please specify how.</p> <p>No</p>

PART III: CERTIFICATION AND ACNOWLEDGEMENT

Applicant


I certify that the information contained in this application and in the documents provided are true and accurate.

Signature of Key Individual ORIGINAL SIGNED BY JOANNE RICHARDSON	Name and Title of Key Individual Joanne Richardson Director - Major Projects and Partnerships, Regulatory Affairs	Date MAY 11, 2017
--	--	--------------------------

(Must be signed by a key individual. A key individual is one that is responsible for executing the following functions for the applicant: matters related to regulatory requirements and conduct, financial matters and technical matters. These key individuals may include the chief executive officer, the chief financial officer, other officers, directors or proprietors.)

Co-Applicant (if applicable)

I certify that the information contained in this application and in the documents provided are true and accurate.

Signature of Key Individual 	Name and Title of Key Individual Arthur Skidmore President & CEO	Date May 5/17
--	--	----------------------

(Must be signed by a key individual. A key individual is one that is responsible for executing the following functions for the applicant: matters related to regulatory requirements and conduct, financial matters and technical matters. These key individuals may include the chief executive officer, the chief financial officer, other officers, directors or proprietors.)

Geographical Distributor LTLT Customer and Asset Transfer Information

Map #	Primary Customer Name	Number	Street	City	Postal Code	Lot	Concession	Township	Meter ID No.	Classification Figure #	Geographical Distributor Rate Class, include Tariff (Res, Scomm + RPP, DCB, etc.)
		Premise Address							Meter Information		Customer care Billing Information
1		9418	WELLINGTON RD 42	ERIN	N0B 1H0	1	8	ERIN	J3098336	Fig.7	R2_TOU_RPP
1		9416	WELLINGTON RD 42	ERIN	N0B 1H0	1	8	ERIN	J3123617	Fig.3	R2_DCB
1		9414	WELLINGTON RD 42	ERIN	N0B 1H0	1	8	ERIN	J3123718	Fig.4	R2_TOU_RPP
1		9410	WELLINGTON RD 42	ERIN	N0B 1H0	1	8	ERIN	J3123619	Fig.4	R2_TOU_RPP
1		9406	WELLINGTON RD 42	ERIN	N0B 1H0	1	8	ERIN	J3483630	Fig.3	R2_TOU_RPP
1		9404	WELLINGTON RD 42	ERIN	N0B 1H0	1	8	ERIN	J3123618	Fig.3	R2_TOU_RPP
1		4901	TRAFALGAR RD	ERIN	N0B 1H0	1	8	ERIN	J3123620	Fig.4	R2_TOU_RPP
1		4901	TRAFALGAR RD	ERIN	N0B 1H0	1	8	ERIN	J3123602	Fig.4	R2_TOU_RPP
1		4901	TRAFALGAR RD	ERIN	N0B 1H0	0	0	ERIN	J3123601	Fig.4	GSE_TOURPP
2		9440	WELLINGTON RD 42	ERIN	N0B 1H0	1	8	ERIN	J3123613	Fig.1	R2_TOU_RPP
2		9438	WELLINGTON RD 42	ERIN	N0B 1H0	1	8	ERIN	J3123614	Fig.5	R2_TOU_RPP
2		9434	WELLINGTON RD 42	ERIN	N0B 1H0	1	8	ERIN	J3564825	Fig.1	R2_TOU_RPP
2		9432	WELLINGTON RD 42	ERIN	N0B 1H0	1	8	ERIN	J3510287	Fig.1	R2_TOU_RPP
2		9430	WELLINGTON RD 42	ERIN	N0B 1H0	1	8	ERIN	J3123616	Fig.1	R2_TOU_RPP
2		9428	WELLINGTON RD 42	ERIN	N0B 1H0	1	8	ERIN	J3098503	Fig.1	R2_DCB
2		9426	WELLINGTON RD 42	ERIN	N0B 1H0	1	8	ERIN	J3098501	Fig.5	R2_TOU_RPP
2		9424	WELLINGTON RD 42	ERIN	N0B 1H0	1	8	ERIN	J3098502	Fig.1	R2_TOU_RPP
2		9422	WELLINGTON RD 42	ERIN	N0B 1H0	1	8	ERIN	J3098504	Fig.7	R2_TOU_RPP
2		9420	WELLINGTON RD 42	ERIN	N0B 1H0	1	8	ERIN	J3123597	Fig.3	R2_TOU_RPP
3		9470	WELLINGTON RD 42	ERIN	N0B 1H0	1	8	ERIN	J3098176	Fig.1	R2_2TR_RPP
3		9468	WELLINGTON RD 42	ERIN	N0B 1H0	1	8	ERIN	J3098174	Fig.1	R2_2TR_RPP
3		9466	WELLINGTON RD 42	ERIN	N0B 1H0	1	8	ERIN	J3098173	Fig.1	R2_2TR_RPP
3		9454	WELLINGTON RD 42	ERIN	N0B 1H0	1	8	ERIN	J3098178	Fig.1	R2_TOU_RPP
4		9382	ERIN HALTON HILLS TLINE	ERIN	N0B 1H0	1	7	ERIN	J3123574	Fig.5	GSE_TOURPP
4		9382	ERIN HALTON HILLS TLINE	#N/A	N0B 1H0	#N/A	#N/A	#N/A	Sentinel Light	Fig.5	SNL_2TRRPP
4		9386	ERIN HALTON HILLS TLINE	ERIN	N0B 1H0	1	7	ERIN	J3123575	Fig.5	GSE_TOURPP
4		9380	ERIN HALTON HILLS TLINE	ERIN	N0B 1H0	1	7	ERIN	J3123637	Fig.6	R2_2TR_RPP
4		9376	ERIN HALTON HILLS TLINE	ERIN	N0B 1H0	1	7	ERIN	J3123573	Fig.5	R2_TOU_RPP
4		9374	ERIN HALTON HILLS TLINE	ERIN	N0B 1H0	1	7	ERIN	J3123576	Fig.5	R2_TOU_RPP
5		9370	ERIN HALTON HILLS TLINE	ERIN	N0B 1H0	1	7	ERIN	J3098669	Fig.5	R2_TOU_RPP
5		9368	ERIN HALTON HILLS TLINE	ERIN	N0B 1H0	1	7	ERIN	J3092839	Fig.5	R2_TOU_RPP
5		9366	ERIN HALTON HILLS TLINE	ERIN	N0B 1H0	1	7	ERIN	J3092837	Fig.6	R2_TOU_RPP
5		9364	ERIN HALTON HILLS TLINE	ERIN	N0B 1H0	1	7	ERIN	J3123741	Fig.5	R2_TOU_RPP
5		9362	ERIN HALTON HILLS TLINE	ERIN	N0B 1H0	1	7	ERIN	J3123737	Fig.5	R2_TOU_RPP
5		9358	ERIN HALTON HILLS TLINE	ERIN	N0B 1H0	1	7	ERIN	J3595373	Fig.5	R2_TOU_RPP
5		9358A	ERIN HALTON HILLS TLINE	ERIN	N0B 1H0	1	7	ERIN	J3604140	Fig.14	GSE_2TRRPP
6		9346	ERIN HALTON HILLS TLINE	ERIN	N0B 1H0	1	7	ERIN	J2964963	Fig.14	R2_2TR_RPP
6		9332	ERIN HALTON HILLS TLINE	ERIN	N0B 1H0	0	0	ERIN	J3510256	Fig.5	R2_2TR_RPP
6		9314	ERIN HALTON HILLS TLINE	ERIN	N0B 1H0	1	7	ERIN	J3223412	Fig.1	R2_2TR_RPP
6		4919	6TH LINE	ERIN	L7J 2L8	0	0	ERIN	J3595396	Fig.14	GSE_2TRRPP
6		4919	6TH LINE	ERIN	L7J 2L8	0	0	ERIN	J3041481	Fig.14	R2_2TR_RPP
6		4902	6TH LINE	ERIN	L7J 2L8	1	6E	ERIN	J3630981	Fig.1	R2_2TR_RPP
7		9248	ERIN HALTON HILLS TLINE	ERIN	L7J 2L8	1	6	ERIN	J3123767	Fig.9	R2_2TR_RPP
7		9244	ERIN HALTON HILLS TLINE	ERIN	L7J 2L8	1	6	ERIN	J3123766	Fig.1	R2_2TR_RPP
7		9224	ERIN HALTON HILLS TLINE	ERIN	L7J 2L8	1	6	ERIN	J2678913	Fig.3	R2_2TR_RPP
7		9212	ERIN HALTON HILLS TLINE	ERIN	L7J 2L8	1	6	ERIN	J3124207	Fig.3	R2_TOU_RPP
7		9206	ERIN HALTON HILLS TLINE	ERIN	L7J 2L8	1	6	ERIN	J3124205	Fig.4	R2_TOU_RPP
8		9188	ERIN HALTON HILLS TLINE	ERIN	L7J 2L8	1	5	ERIN	J3098105	Fig.4	R2_TOU_RPP
8		9188	ERIN HALTON HILLS TLINE	ERIN	L7J 2L8	1	5	ERIN	J3098107	Fig.8	R2_TOU_RPP

8		9176	ERIN HALTON HILLS TLINE	ERIN	L7J 2L8	1	5	ERIN	J3124208	Fig.1	R2_DCB
9		9098	ERIN HALTON HILLS TLINE	ERIN	L7J 2L8	1	4	ERIN	J3584463	Fig.5	GSE_TOURPP
9		9092	ERIN HALTON HILLS TLINE	ERIN	L7J 2L8	1	E 4	ERIN	J3510212	Fig.6	R2_2TR_RPP
9		9062	ERIN HALTON HILLS TLINE	ERIN	L7J 2L8	1	E 4	ERIN	J3041530	Fig.14	R2_TOU_RPP
9		9050	ERIN HALTON HILLS TLINE	ERIN	L7J 2L8	1	4	ERIN	J3123803	Fig.14	R2_TOU_RPP
9		9032	ERIN HALTON HILLS TLINE	ERIN	L7J 2L8	1	4	ERIN	J3123801	Fig.5	R2_TOU_RPP
9		9030	ERIN HALTON HILLS TLINE	ERIN	L7J 2L8	1	4	ERIN	J3123802	Fig.9	R2_TOU_RPP
9		9024	ERIN HALTON HILLS TLINE	ERIN	L7J 2L8	1	4	ERIN	J3098318	Fig.13	R2_TOU_RPP
9		9024	ERIN HALTON HILLS TLINE	#N/A	#N/A	#N/A	#N/A	#N/A	Unmetered	Fig.13	SNL_2TRRPP
10		8986	ERIN HALTON HILLS TLINE	ERIN	L7J 2L8	1	3E	ERIN	J3093514	Fig.5	R2_TOU_RPP
10		8984	ERIN HALTON HILLS TLINE	ERIN	L7J 2L8	1	3	ERIN	J3098317	Fig.5	R2_TOU_RPP
10		8976	ERIN HALTON HILLS TLINE	ERIN	L7J 2L8	1	E 3	ERIN	J3041531	Fig.14	R2_DCB
10		8966	ERIN HALTON HILLS TLINE	ERIN	L7J 2L8	1	3	ERIN	J3098320	Fig.5	R2_TOU_RPP
10		8962	ERIN HALTON HILLS TLINE	ERIN	L7J 2L8	PT1	3	ERIN	J3041532	Fig.14	GSE_TOURPP
10		8948	ERIN HALTON HILLS TLINE	ERIN	L7J 2L8	1	3	ERIN	J3510285	Fig.6	GSE_TOURPP
10		8912	ERIN HALTON HILLS TLINE	ERIN	L7J 2L9	PT LOT 1	3	ERIN	J3104884	Fig.5	R2_TOU_RPP
10		8910	ERIN HALTON HILLS TLINE	ERIN	L7J 2L9	1	3	ERIN	J2687443	Fig.5	R2_TOU_RPP
11		8868	ERIN HALTON HILLS TLINE	ERIN	L7J 2L9	1	2	ERIN	J3098620	Fig.1	R2_TOU_RPP
11		8864	ERIN HALTON HILLS TLINE	ERIN	L7J 2L9	1	2	ERIN	J3098618	Fig.1	R2_TOU_RPP
11		8858	ERIN HALTON HILLS TLINE	ERIN	L7J 2L9	1	2E	ERIN	J3098617	Fig.13	R2_TOU_RPP
11		8852	ERIN HALTON HILLS TLINE	ERIN	L7J 2L9	1	2	ERIN	J3041534	Fig.15	R2_TOU_RPP
11		8848	ERIN HALTON HILLS TLINE	ERIN	L7J 2L9	1	2	ERIN	J3007922	Fig.13	R2_2TR_RPP
12		8840	ERIN HALTON HILLS TLINE	ERIN	L7J 2L9	1	2E	ERIN	J3098613	Fig.1	R2_2TR_RPP
12		8832	ERIN HALTON HILLS TLINE	ERIN	L7J 2L9	1	2	ERIN	J3524478	Fig.13	R2_2TR_RPP
12		8818	ERIN HALTON HILLS TLINE	ERIN	L7J 2L9	1	2	ERIN	J3098615	Fig.13	R2_TOU_RPP
13		8750	ERIN HALTON HILLS TLINE	ERIN	L7J 2L7	1	1	ERIN	J3451941	Fig.15	MICROFIT
13		8750	ERIN HALTON HILLS TLINE	ERIN	L7J 2L7	1	1	ERIN	J3625792	Fig.15	R2_TOU_RPP
13		8718	ERIN HALTON HILLS TLINE	ERIN	L7J 2L7	1	1	ERIN	J3092824	Fig.4	R2_TOU_RPP
13		8704	ERIN HALTON HILLS TLINE	ERIN	L7J 2L7	1	W 1	ERIN	J3098536	Fig.4	R2_TOU_RPP

	Figure #1	Figure #2	Figure #3	Figure #4	Figure #5	Figure #6	Figure #7	Figure #8	Figure #9	Figure #10	Figure #11	Figure #12	Figure #13	Figure #14	Figure #15	Primary Wire Line	
Main Page	17	0	6	9	20	4	2	1	2	0	0	0	6	8	3		
Special Case #1																	
Special Case #2																	
Special Case #3																	
Special Case #4																	
Special Case #5																	
Special Case #6																	
O/H	20	70	20	70		50		50		63		63					
U/G	63		63		63		63		63		63						
Primary									20	20			20		20		
Neutral									20	20			20		20		
Subtotal	17	0	6	9	20	4	2	1	2	0	0	0	6	8	3	0	
Total O/H	340	0	120	630	0	200	0	50	0	0	0	0	0	0	0	Total Secondary O/H (m)	2660
Total U/G	1071	0	378	0	1260	0	126	0	126	0	0	0	0	0	0	Total Secondary U/G (m)	2961
Total Primary	0	0	0	0	0	0	0	0	80	0	0	0	240	0	120	Total Primary (m)	440
Toal Buss (m)	1320																

POLES	30	35	40	45	50	55	Total
Main Page	6	4	29	4	0	0	43
Special Case #1							0
Special Case #2							0
Special Case #3							0
Special Case #4							0
Special Case #5							0
Special Case #6							0
TOTAL	6	4	29	4	0	0	43

Transformers	5	10	15	25	50	75	100	167	Total
Main Page	2	4	0	35	10	2	0	0	53
Special Case #1									0
Special Case #2									0
Special Case #3									0
Special Case #4									0
Special Case #5									0
Special Case #6									0
TOTAL	2	4	0	35	10	2	0	0	53
Sentinel Lights (Total)	2								

ASSET SUMMARY

Poles	30	35	40	45	50	55	Total		
	6	4	29	4	0	0	43		
Transformers	5	10	15	25	50	75	100	167	Total
	2	4	0	35	10	2	0	0	53
Primary Wire (metres)	440								
Secondary O/H Wire (Metres)	2660								
Secondary U/G Wire (Metres)	2961								
Current Transformers	0								
Sentinel Lights	2								
Easements	0								

Geographical Distributor LTLT Customer and Asset Transfer Information

Map #	Primary Customer Name	Number	Street	City	Postal Code	Lot	Concession	Township	Meter ID No.	Classification Figure #	Geographical Distributor Rate Class, include Tariff (Res, Scomm + RPP, DCB, etc.)
			Premise Address						Meter Information		Customer care Billing Information
1		11354	WINSTON CHURCHILL BLVD	GEORGETOWN	L7G 4S7	17	11	HALTON HILLS	HHSM52731	Special #1	Res
		11354	WINSTON CHURCHILL BLVD (Stub Pole)					HALTON HILLS			
			WINSTON CHURCHILL BLVD (Line Pole)					HALTON HILLS			
			WINSTON CHURCHILL BLVD (Line Pole)					HALTON HILLS			
			WINSTON CHURCHILL BLVD (Line Pole)					HALTON HILLS			
			WINSTON CHURCHILL BLVD (Line Pole)					HALTON HILLS			
			WINSTON CHURCHILL BLVD (Line Pole)					HALTON HILLS			
			WINSTON CHURCHILL BLVD (Line Pole)					HALTON HILLS			
			WINSTON CHURCHILL BLVD (Line Pole)					HALTON HILLS			
1		11204	WINSTON CHURCHILL BLVD	GEORGETOWN	L7G 4S7	17	11	HALTON HILLS	HHSM52755	Special #2	Res
1		11196	WINSTON CHURCHILL BLVD	GEORGETOWN	L7G 4S7	16	11	HALTON HILLS	HHSM52754	Special #2	Res
1		11180	WINSTON CHURCHILL BLVD	GEORGETOWN	L7G 4S7	16	11	HALTON HILLS	HHSM52752	Special #2	Res
1		11154	WINSTON CHURCHILL BLVD	GEORGETOWN	L7G 4S7	16	11	HALTON HILLS	HHSM52764	Special #2	Res
			WINSTON CHURCHILL BLVD (Line Pole)					HALTON HILLS			
			WINSTON CHURCHILL BLVD (Line Pole)					HALTON HILLS			
1		11106	WINSTON CHURCHILL BLVD	GEORGETOWN	L7G 4S7	16	11	HALTON HILLS	HHSM31749	Special #3	GS 50-999
			WINSTON CHURCHILL BLVD (Stub Pole)					HALTON HILLS			
3		11722	WINSTON CHURCHILL BLVD	GEORGETOWN	L7G 4S7	19	11	HALTON HILLS	HHSM52729	Fig.13	Res
3		11808	WINSTON CHURCHILL BLVD	GEORGETOWN	L7G 4S7	19	11	HALTON HILLS	HHSM52728	Fig.5	Res
3		11814	WINSTON CHURCHILL BLVD	GEORGETOWN	L7G 4S7	19	11	HALTON HILLS	HHSM52727	Fig.1	Res
4		11878	WINSTON CHURCHILL BLVD	GEORGETOWN	L7G 4S7	20	11	HALTON HILLS	HHSM52726	Fig.13	Res
4		11890	WINSTON CHURCHILL BLVD	GEORGETOWN	L7G 4S7	20	11	HALTON HILLS	HHSM52725	Fig.5	Res
4		11898	WINSTON CHURCHILL BLVD	GEORGETOWN	L7G 4S7	20	11	HALTON HILLS	HHSM52724	Fig.2	Res
4		11944	WINSTON CHURCHILL BLVD	GEORGETOWN	L7G 4S7	20	11	HALTON HILLS	HHSM52747	Fig.1	Res
4		11944	WINSTON CHURCHILL BLVD SHED	GEORGETOWN	L7G 4S7	20	11	HALTON HILLS	HHSM52746	Fig.5	Res
4		11992	WINSTON CHURCHILL BLVD	GEORGETOWN	L7G 4S7	20	11	HALTON HILLS	HHSM52745	Fig.1	Res
4		11998	WINSTON CHURCHILL BLVD	GEORGETOWN	L7G 4S7	20	11	HALTON HILLS	HHSM52744	Fig.1	Res
6		12496	WINSTON CHURCHILL BLVD	TERRA COTTA	L0P 1N0	23	11	HALTON HILLS	HHSM53185	Fig.1	Res
6		12508	WINSTON CHURCHILL BLVD	TERRA COTTA	L0P 1N0	23	11	HALTON HILLS	HHSM41032	Fig.1	Res
7		12618	WINSTON CHURCHILL BLVD	TERRA COTTA	L0P 1N0	24	11	HALTON HILLS	HHSM53186	Fig.5	Res
7		12680	WINSTON CHURCHILL BLVD	TERRA COTTA	L0P 1N0	24	11	HALTON HILLS	HHSM53187	Fig.7	Res
7		12688	WINSTON CHURCHILL BLVD	TERRA COTTA	L0P 1N0	24	11	HALTON HILLS	HHSM30237	Fig.14	GS<50 TOU
7		12822	WINSTON CHURCHILL BLVD	TERRA COTTA	L0P 1N0	25	11	HALTON HILLS	HHSM56961	Fig.5	Res
8		12900	WINSTON CHURCHILL BLVD	TERRA COTTA	L0P 1N0	25	11	HALTON HILLS	HHSM53156	Fig.5	Res
8		12916	WINSTON CHURCHILL BLVD	TERRA COTTA	L0P 1N0	25	11	HALTON HILLS	HHSM53158	Fig.5	Res
8		12938	WINSTON CHURCHILL BLVD	TERRA COTTA	L0P 1N0	25	11	HALTON HILLS	HHSM53159	Fig.13	Res
8		12964	WINSTON CHURCHILL BLVD	TERRA COTTA	L0P 1N0	25	11	HALTON HILLS	HHSM30205	Fig.13	Res
8		13070	WINSTON CHURCHILL BLVD	TERRA COTTA	L0P 1N0	26	11	HALTON HILLS	HHSM53136	Fig.6	Res
8		13080	WINSTON CHURCHILL BLVD	TERRA COTTA	L0P 1N0	26	11	HALTON HILLS	HHSM46673	Fig.8	Res
8		13086	WINSTON CHURCHILL BLVD	TERRA COTTA	L0P 1N0	26	11	HALTON HILLS	HHSM53139	Fig.8	Res
8		13096	WINSTON CHURCHILL BLVD	TERRA COTTA	L0P 1N0	26	11	HALTON HILLS	HHSM53138	Fig.8	Res
8		13096	WINSTON CHURCHILL BLVD M-FIT	TERRA COTTA	L0P 1N0	26	11	HALTON HILLS	HHSM56083		MFIT
8		13102	WINSTON CHURCHILL BLVD	TERRA COTTA	L0P 1N0	26	11	HALTON HILLS	HHSM53175	Fig.7	Res
8		13102	WINSTON CHURCHILL BLVD	TERRA COTTA	L0P 1N0	26	11	HALTON HILLS	HHSM53137	Fig.7	Res
9		13112	WINSTON CHURCHILL BLVD	TERRA COTTA	L0P 1N0	26	11	HALTON HILLS	HHSM53174	Fig.6	Res
9		13116	WINSTON CHURCHILL BLVD	TERRA COTTA	L0P 1N0	26	11	HALTON HILLS	HHSM53172	Fig.6	Res
9		13140	WINSTON CHURCHILL BLVD	TERRA COTTA	L0P 1N0	26	11	HALTON HILLS	HHSM53173	Fig.6	Res
9		13140	WINSTON CHURCHILL BLVD GARAG	TERRA COTTA	L0P 1N0	26	11	HALTON HILLS	HHSM53146	Fig.5	GS<50 TOU
9		13162	WINSTON CHURCHILL BLVD	TERRA COTTA	L0P 1N0	26	11	HALTON HILLS	HHSM50113	Fig.6	Res
9		13202	WINSTON CHURCHILL BLVD	TERRA COTTA	L0P 1N0	27	11	HALTON HILLS	HHSM50114	Fig.8	Res
9		13216	WINSTON CHURCHILL BLVD	TERRA COTTA	L0P 1N0	27	11	HALTON HILLS	HHSM50115	Fig.7	Res
10		14452	WINSTON CHURCHILL BLVD HOUSE CHANG	TERRA COTTA	L0P 1N0	30	11	HALTON HILLS	HHSM50101	Fig.14	GS<50 TOU
10		14452	WINSTON CHURCHILL BLVD	TERRA COTTA	L0P 1N0	30	11	HALTON HILLS	HHSM50658	Fig.14	GS<50 TOU
10		14452	WINSTON CHURCHILL BLVD HOUSE GATE	TERRA COTTA	L0P 1N0	30	11	HALTON HILLS	HHSM50100	Fig.14	GS<50 TOU
10		14452	WINSTON CHURCHILL BLVD	TERRA COTTA	L0P 1N0	30	11	HALTON HILLS	HHSM50102	Fig.14	GS<50 TOU
10		14452	WINSTON CHURCHILL BLVD	TERRA COTTA	L0P 1N0	30	11	HALTON HILLS	HHSM50658	Fig.14	GS<50 TOU
10		14572	WINSTON CHURCHILL BLVD	TERRA COTTA	L0P 1N0	30	11	HALTON HILLS	HHSM53135	Fig.6	Res
10		14574	WINSTON CHURCHILL BLVD	TERRA COTTA	L0P 1N0	30	11	HALTON HILLS	HHSM53134	Fig.6	Res
10		14576	WINSTON CHURCHILL BLVD	TERRA COTTA	L0P 1N0	30	11	HALTON HILLS	HHSM53133	Fig.6	Res
10		14578	WINSTON CHURCHILL BLVD	TERRA COTTA	L0P 1N0	30	11	HALTON HILLS	HHSM53132	Fig.6	Res
10		14584	WINSTON CHURCHILL BLVD	TERRA COTTA	L0P 1N0	30	11	HALTON HILLS	HHSM50659	Fig.6	Res
10		14592	WINSTON CHURCHILL BLVD JSSC	TERRA COTTA	L0P 1N0	31	11	HALTON HILLS	HHSM30238	Fig. 14	GS<50 TOU
10		14592	WINSTON CHURCHILL BLVD TEMP	TERRA COTTA	L0P 1N0	31	11	HALTON HILLS	HHSM48023	Fig. 14	GS<50 TOU
5		12302	10TH LINE	MISSISSAUGA	L4W 5J4	22	11	HALTON HILLS	HHSM47776	Fig.13	GS<50 TOU
1			MAYFIELD&WINSTON CHURCH						C00140		UMSL
5		12302	10TH LINE	GEORGETOWN	L7G 4S7	22	11	HALTON HILLS	HHSM47803	Fig. 14	GS<50 TOU

	Figure #1	Figure #2	Figure #3	Figure #4	Figure #5	Figure #6	Figure #7	Figure #8	Figure #9	Figure #10	Figure #11	Figure #12	Figure #13	Figure #14	Figure #15	Primary Wire Line
Main Page	6	1	0	0	8	10	4	4	0	0	0	0	5	6	0	
Special Case #1																
Special Case #2																
Special Case #3																
Special Case #4																
Special Case #5																
Special Case #6																
O/H		70	20	70		50		50		63		63				
U/G			63		63		63		63		63					
Primary									20	20			20		20	
Neutral									20	20			20		20	
Subtotal		1	0	0	8	10	4	4	0	0	0	0	5	6	0	0
Total O/H		70	0	0	0	500	0	200	0	0	0	0	0	0	0	Total Secondary O/H (m)
Total U/G		0	0	0	504	0	252	0	0	0	0	0	0	0	0	Total Secondary U/G (m)
Total Primary		0	0	0	0	0	0	0	0	0	0	0	200	0	0	Total Primary (m)
Toal Buss (m)																200

POLES	35	40	45	50	55	Total
Main Page	11	3	12	0	0	26
Special Case #1						0
Special Case #2						0
Special Case #3						0
Special Case #4						0
Special Case #5						0
Special Case #6						0
TOTAL	11	3	12	0	0	26

Transformers	10	15	25	50	75	100	167	Total
Main Page	1	9	10	5	1	1	0	27
Special Case #1								0
Special Case #2								0
Special Case #3								0
Special Case #4								0
Special Case #5								0
Special Case #6								0
TOTAL	1	9	10	5	1	1	0	27

Sentinel Lights (Total)

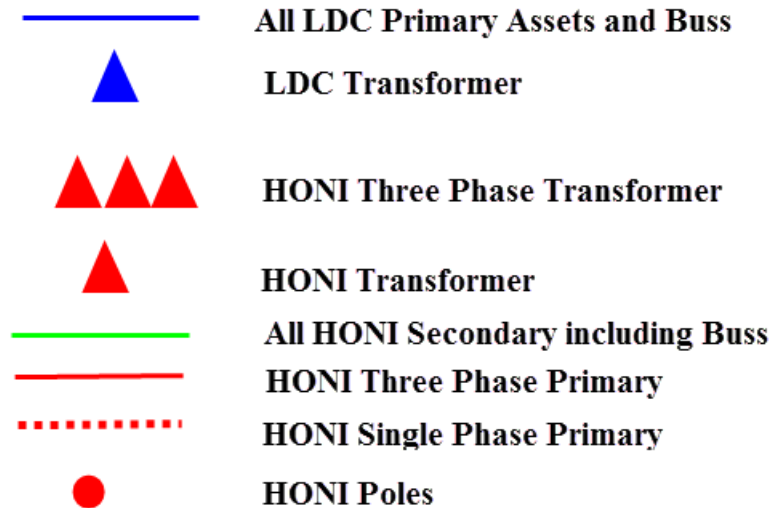
ASSET SUMMARY

Poles	35	40	45	50	55	Total		
	11	3	12	0	0	26		
Transformers	10	15	25	50	75	100	167	Total
	1	9	10	5	1	1	0	27
Primary Wire (metres)								
Secondary O/H Wire (Metres)								
Secondary U/G Wire (Metres)								
Current Transformers								
Sentinel Lights								
Easements								

Hydro One Geographical LDC Maps for LTLT Elimination with Halton Hills Hydro

as Physical LDC

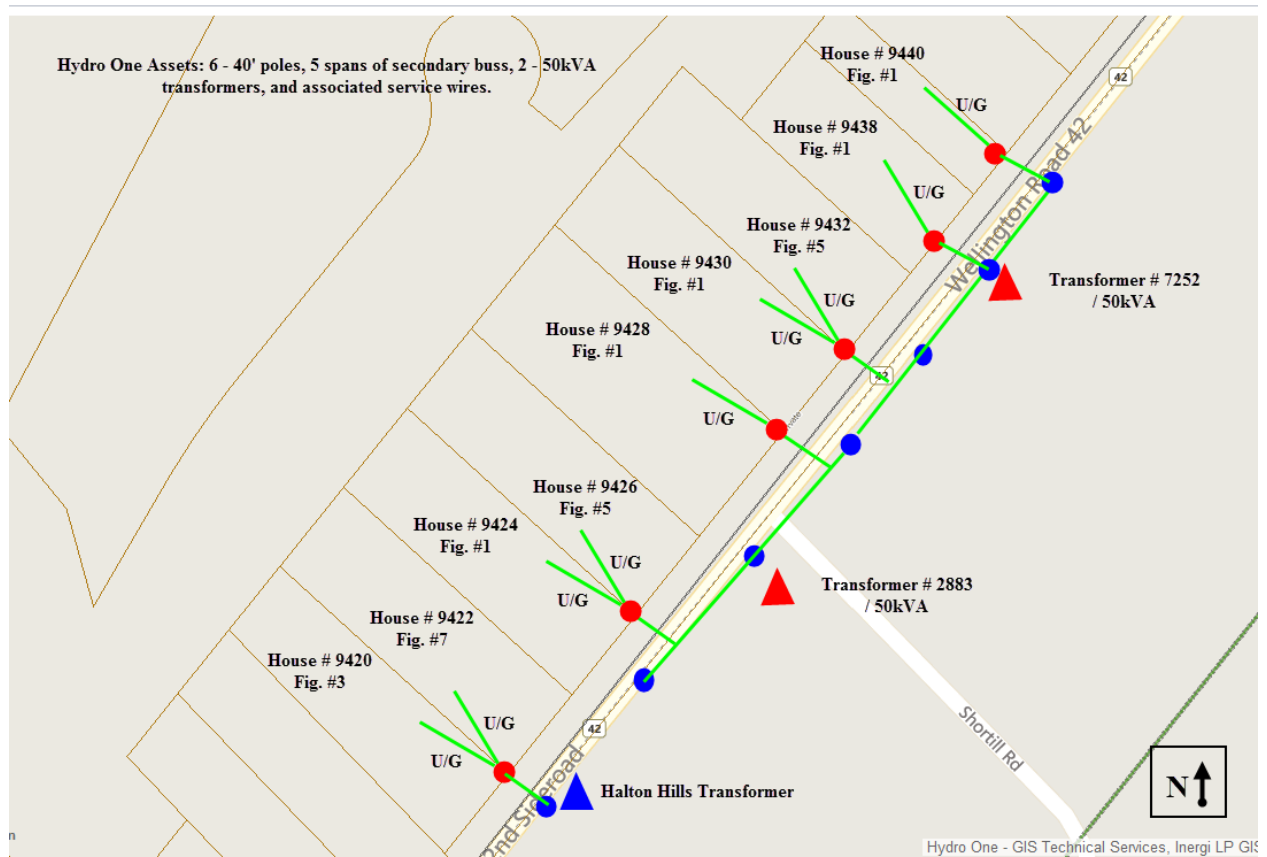
Maps Legend



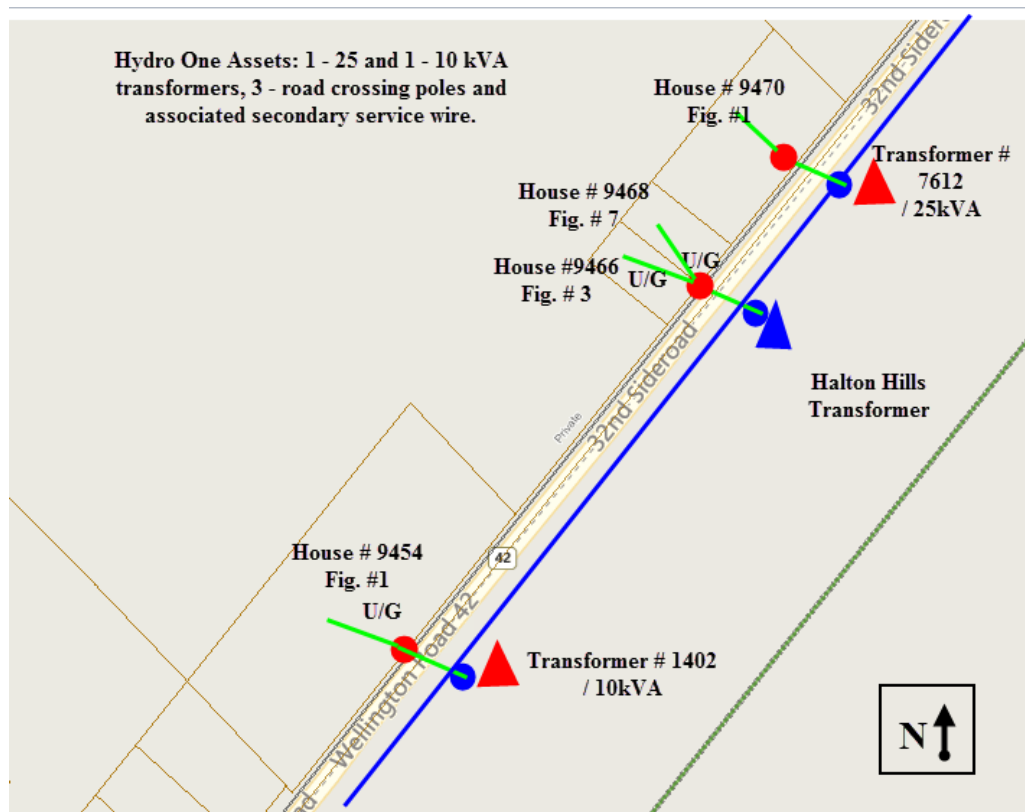
Map #1 -



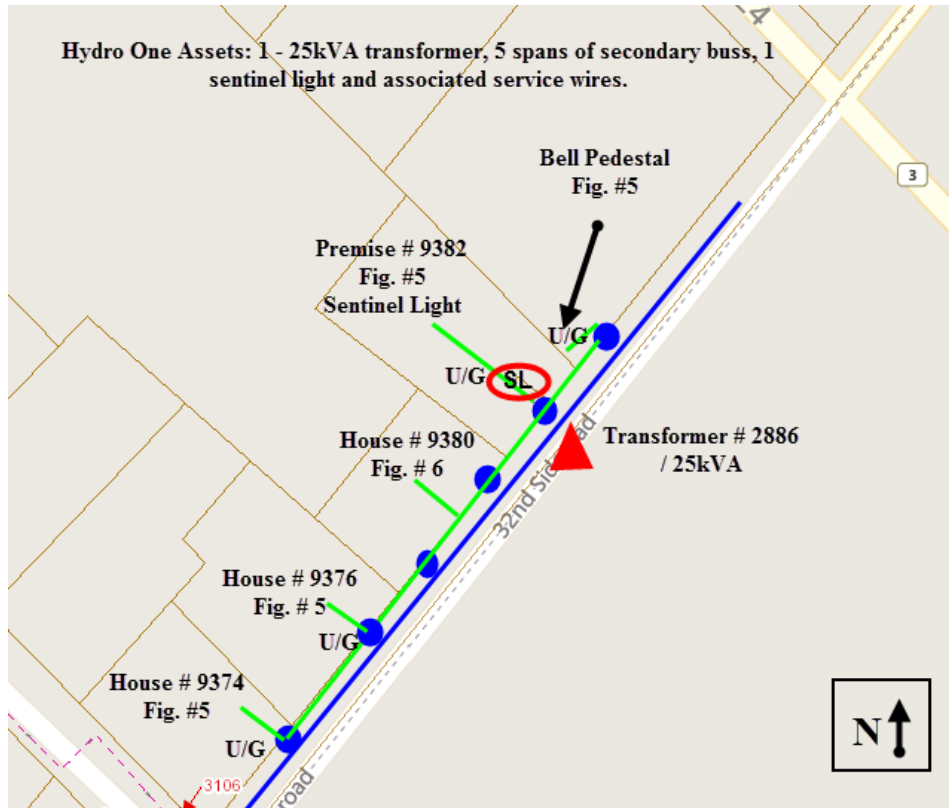
Map #2 –



Map #3 –



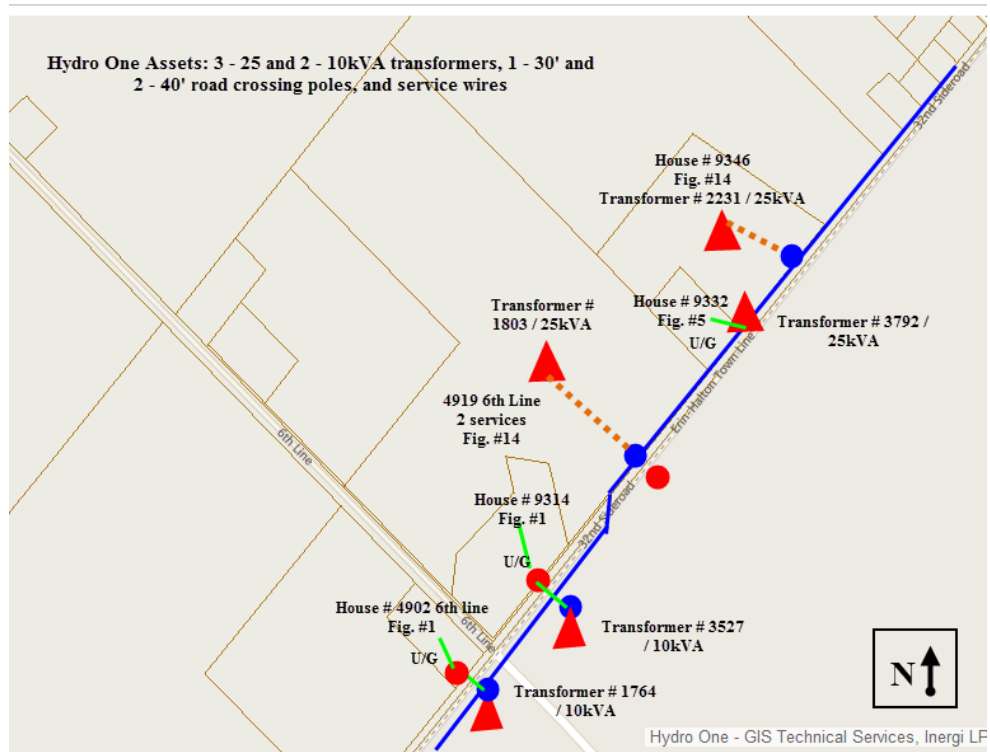
Map #4 –



Map #5 –



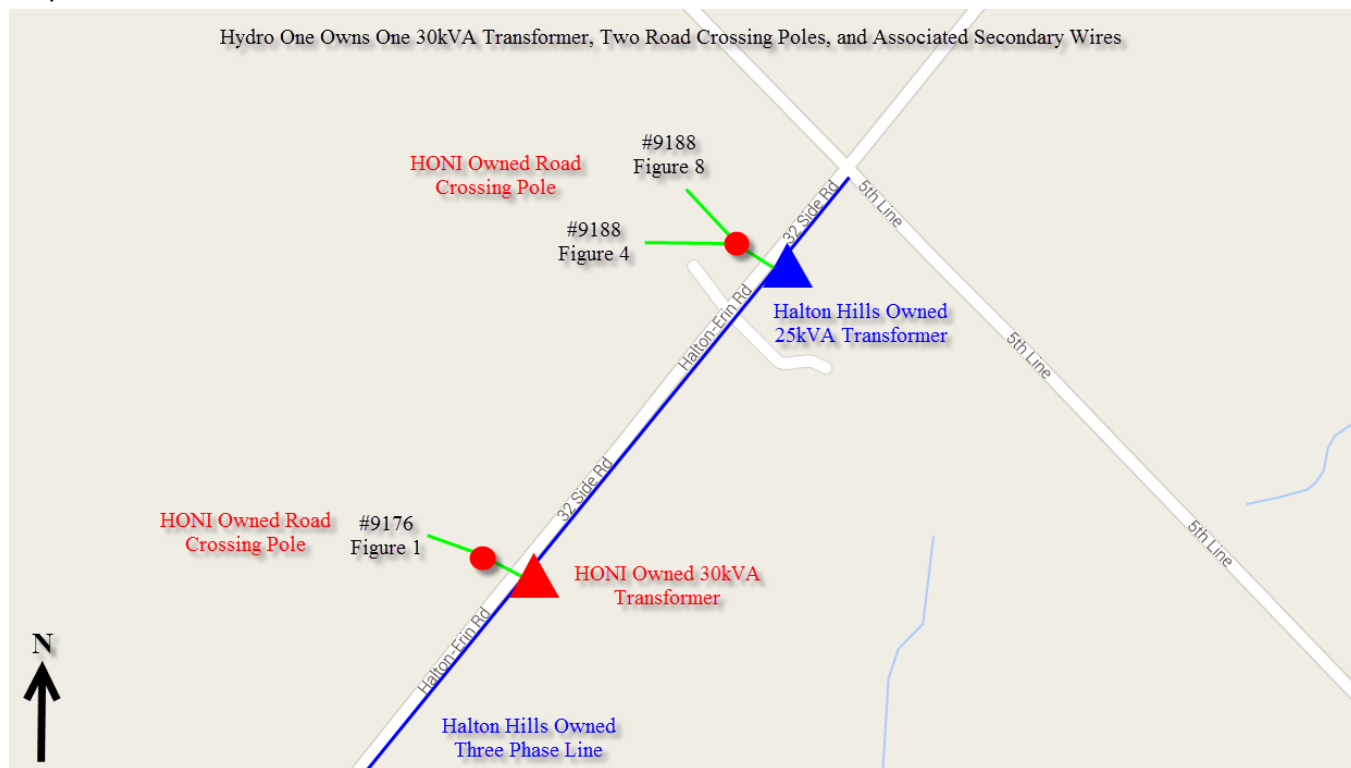
Map #6 –



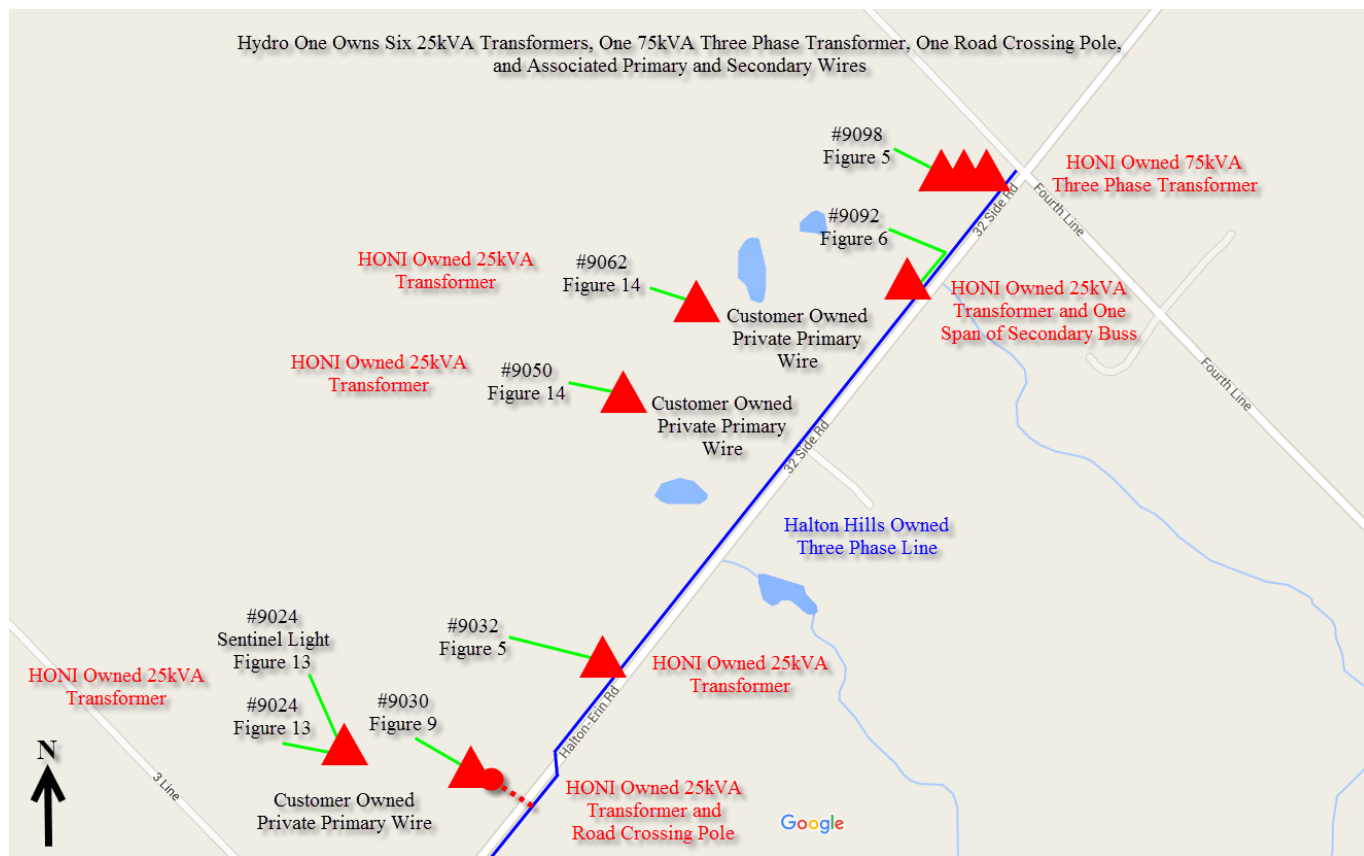
Map #7 –



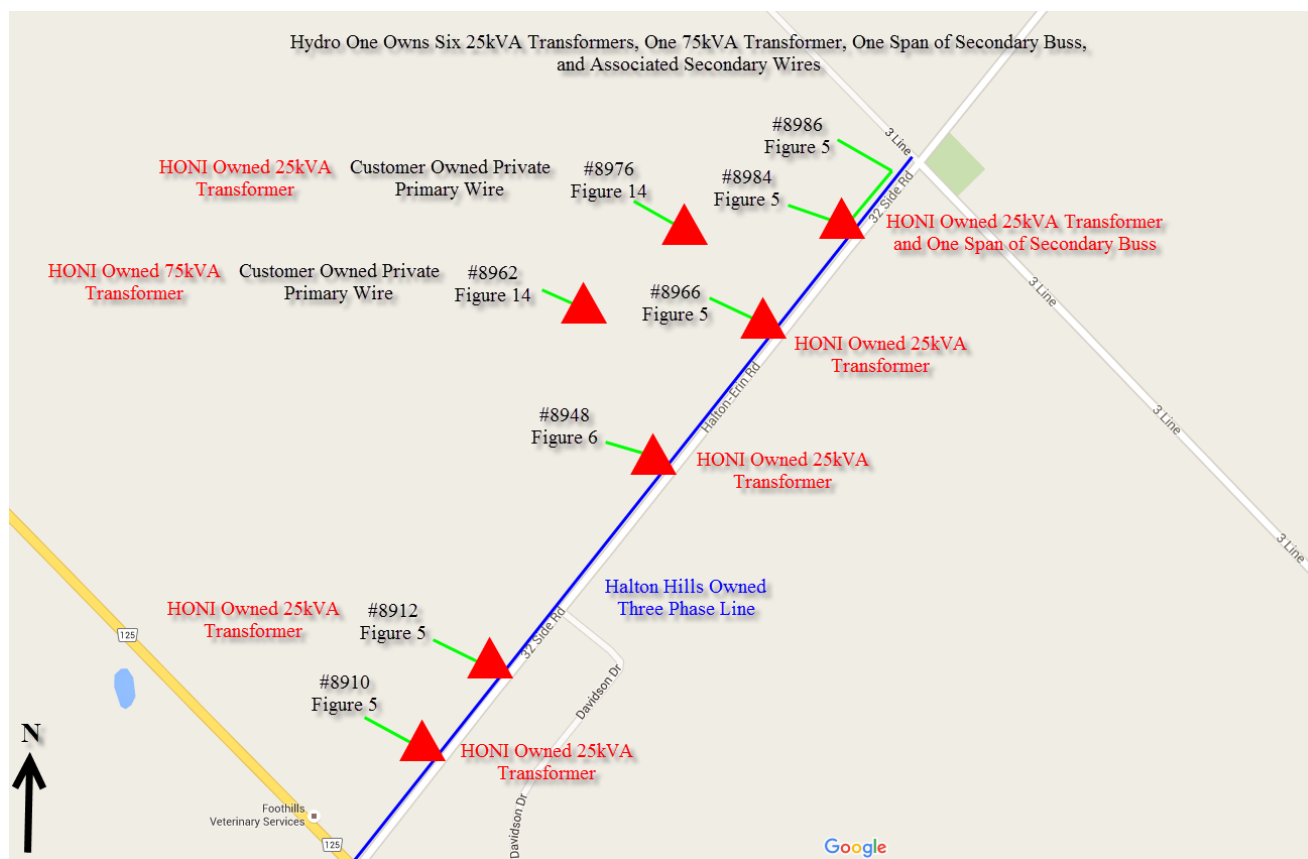
Map #8 –



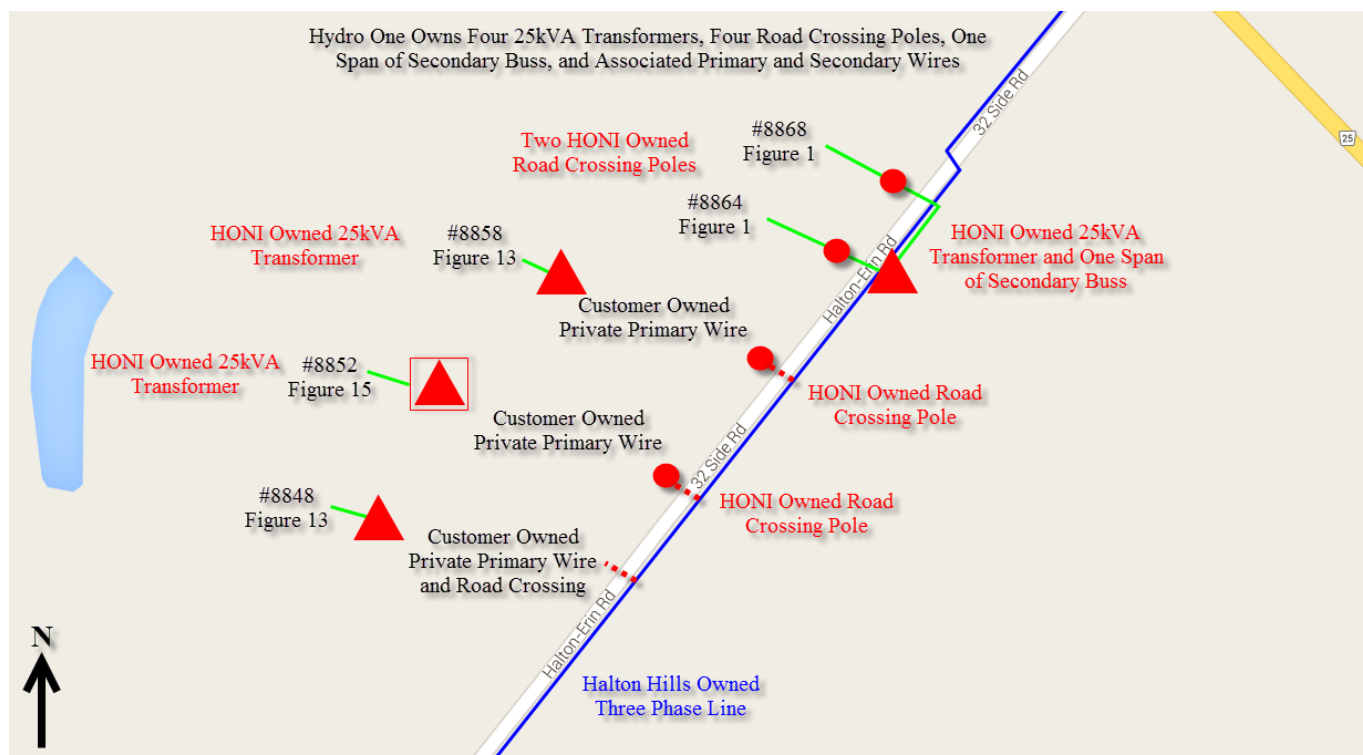
Map #9 –

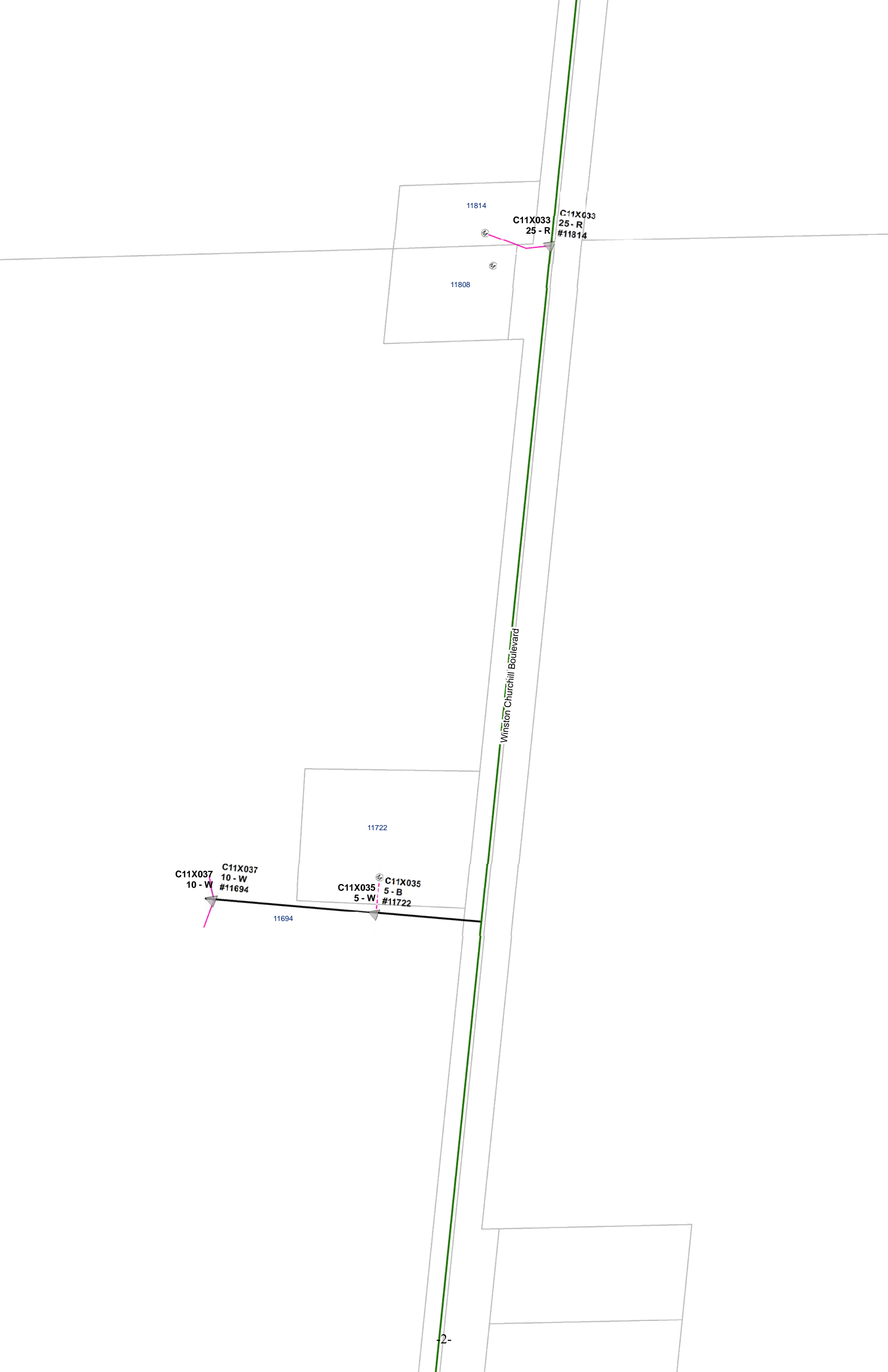


Map #10 –



Map #11 –





11814

C11X033
25 - R

C11X033
25 - R
#11814

11808

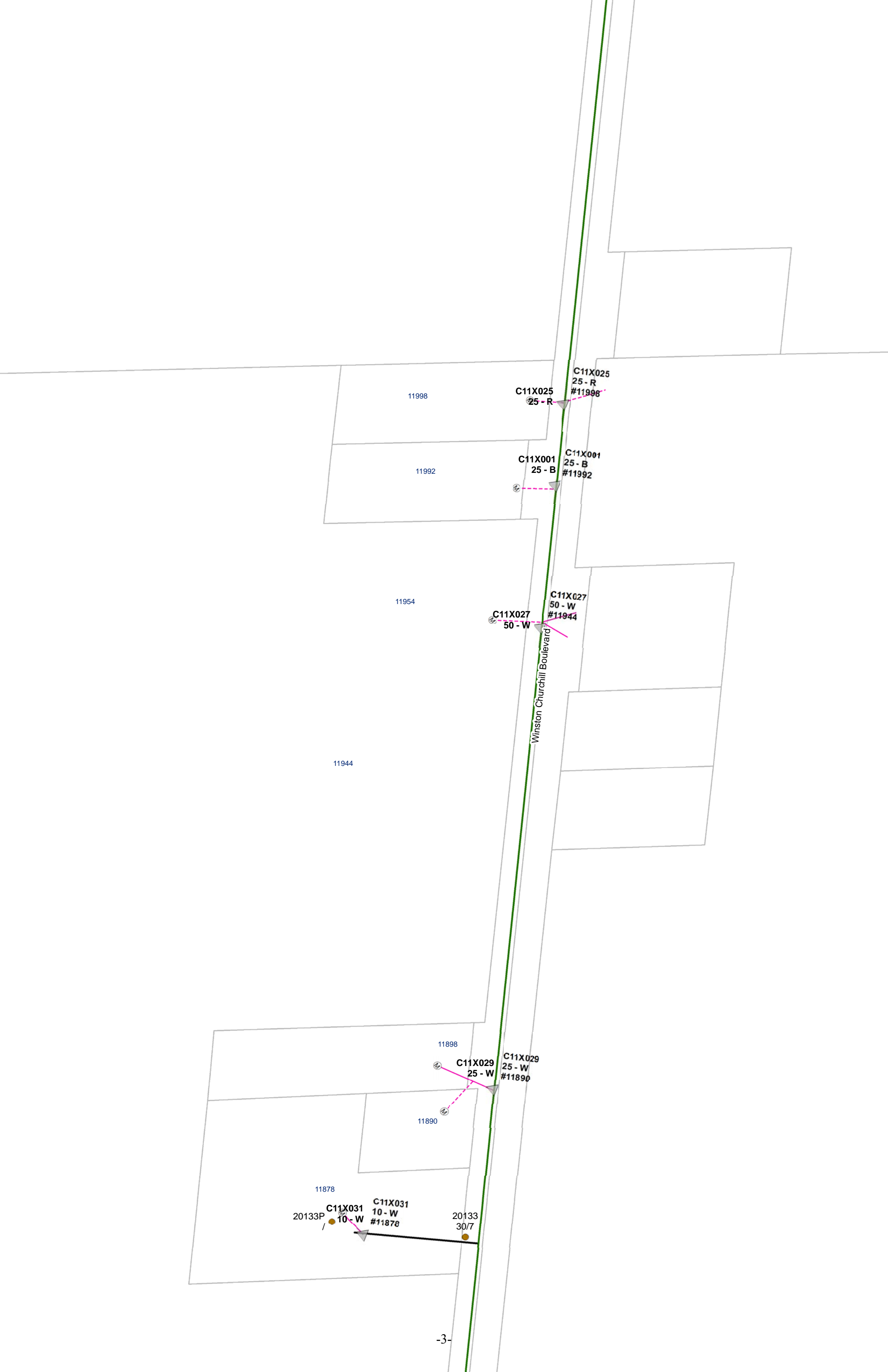
11722

C11X035
5 - B
C11X035
5 - W
#11722

C11X037
10 - W
C11X037
10 - W
#11694

11694

Winston Churchill Boulevard

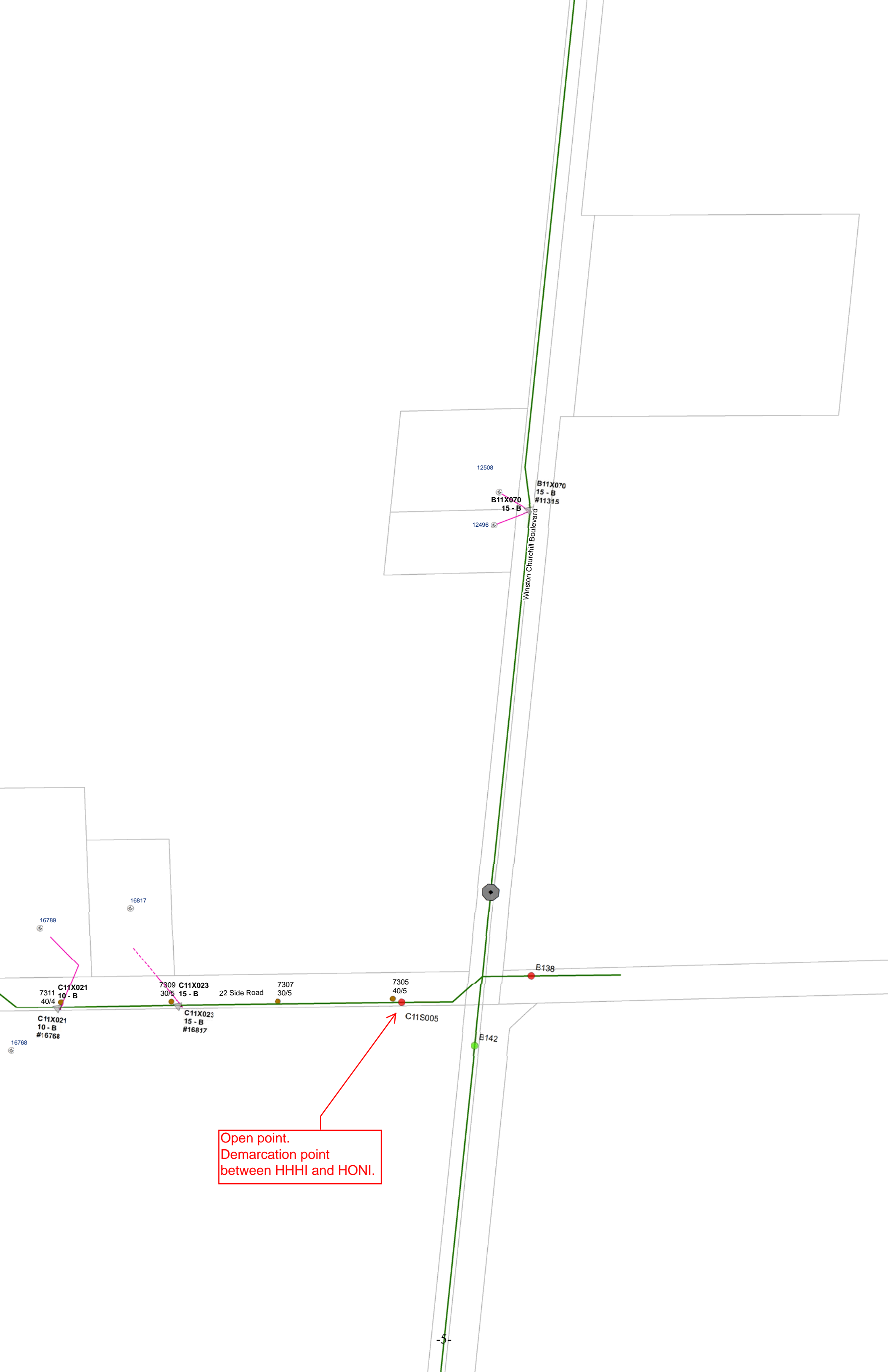


C11X061
50 - R
C11X061
50 - W
#12302

C11X043
25 - R
C11X043
25 - R
#0

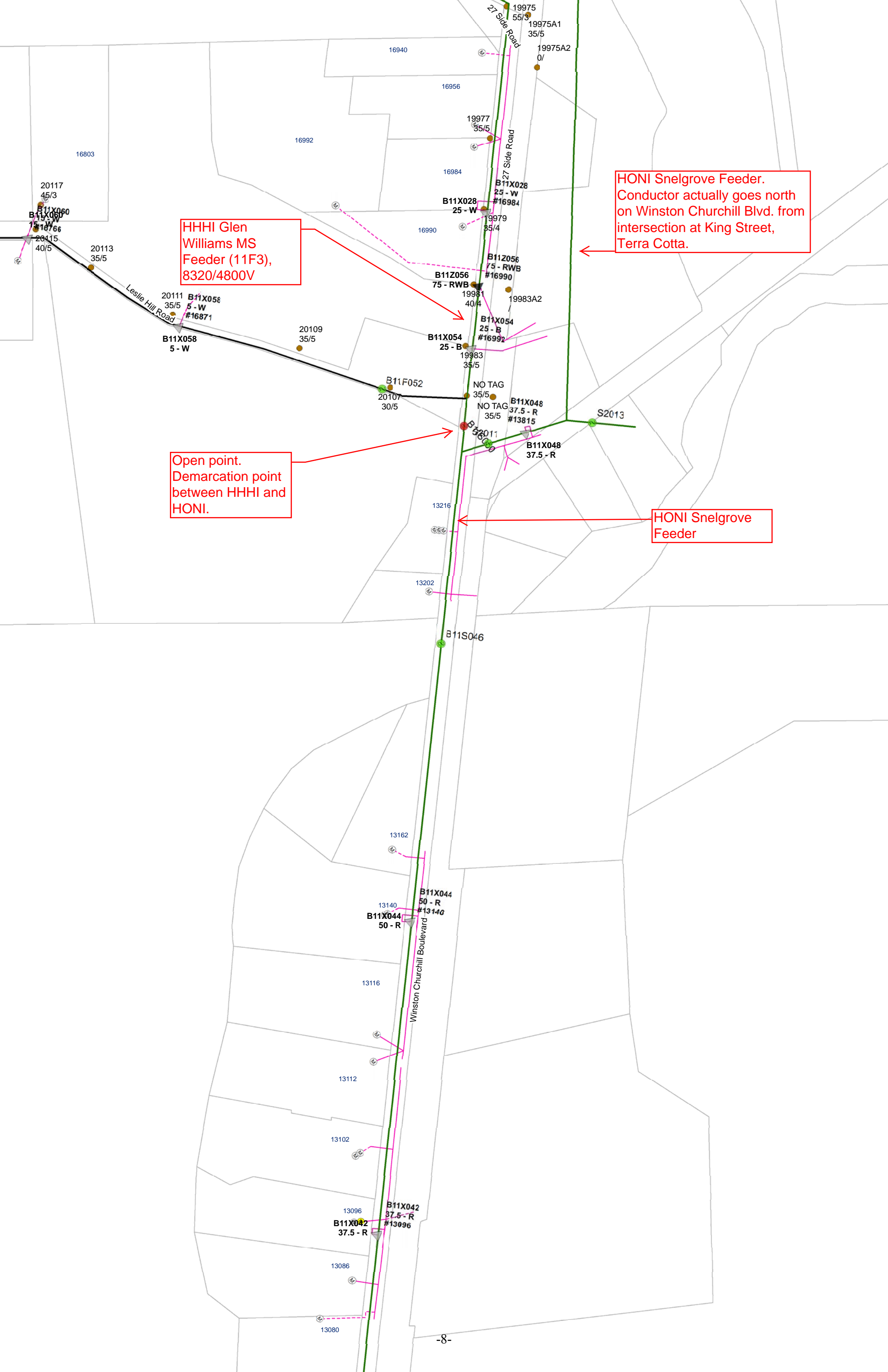
Winston Churchill Boulevard

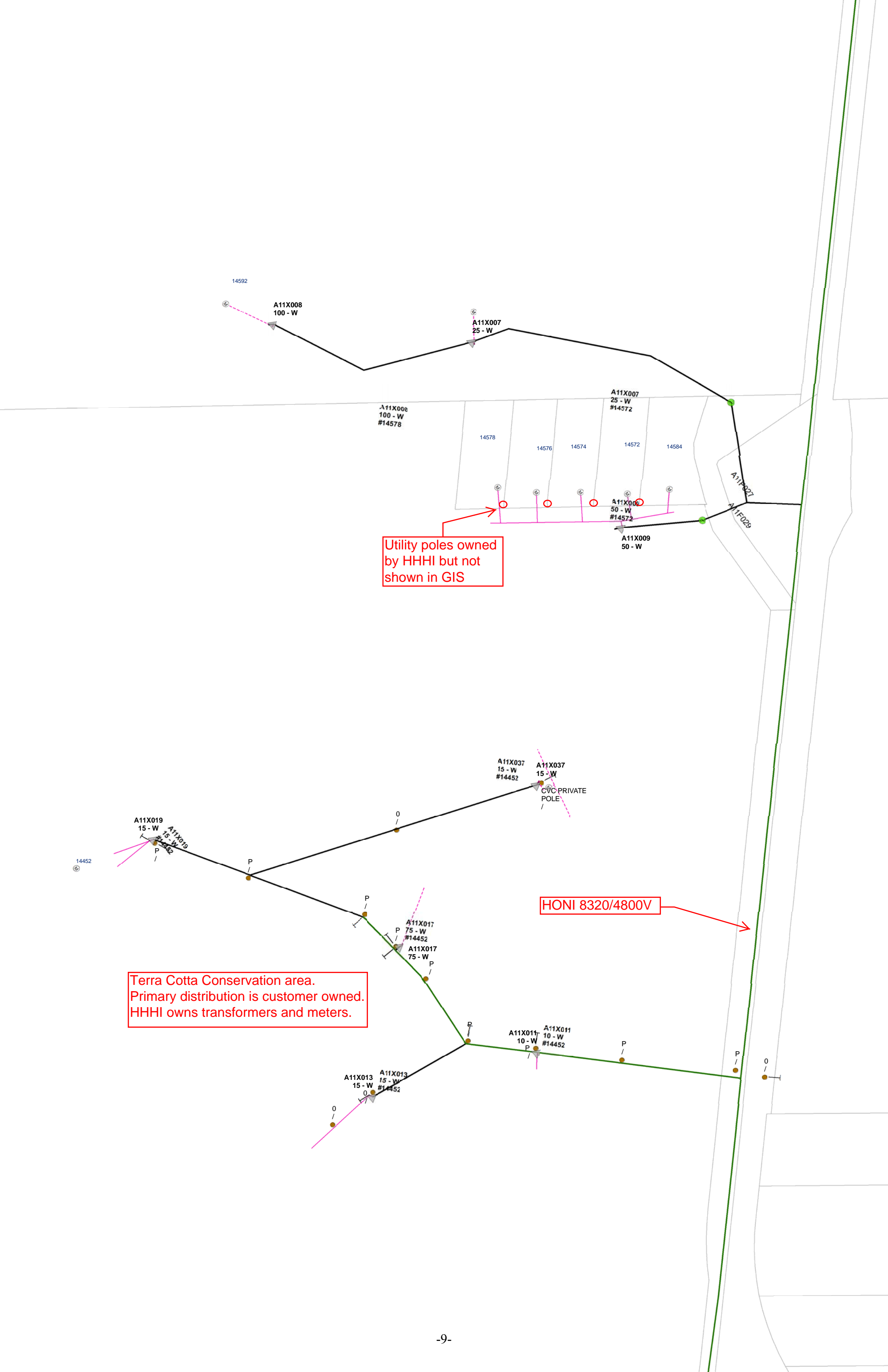
C11X025
25 - R
C11X025
25 - R
#11998



Open point.
Demarcation point
between HHHI and HONI.







Utility poles owned
by HHHI but not
shown in GIS

HONI 8320/4800V

Terra Cotta Conservation area.
Primary distribution is customer owned.
HHHI owns transformers and meters.