

Hydro One Networks Inc.

7th Floor, South Tower
483 Bay Street
Toronto, Ontario M5G 2P5
www.HydroOne.com

Tel: (416) 345-5393
Fax: (416) 345-5866
Joanne.Richardson@HydroOne.com

Joanne Richardson

Director – Major Projects and Partnerships
Regulatory Affairs



BY COURIER

May 19, 2017

Ms. Kirsten Walli
Board Secretary
Ontario Energy Board
Suite 27, 2300 Yonge Street
P.O. Box 2319
Toronto, ON
M4P 1E4

Dear Ms. Walli:

**Load Transfer Elimination Application – A Service Area Amendment & Asset Sale Application
Between Hydro One Networks Inc. and Essex Powerlines Corp.**

In accordance with the Distribution System Code amendments of December 21, 2015, Hydro One Networks Inc. and Essex Powerlines Corp. are jointly applying to the Ontario Energy Board (“Board”) for approval to amend the service areas of both distributors such that existing load transfer arrangements between the two LDCs are eliminated.

Should you have any questions on this application, please contact Pasquale Catalano at (416) 345-5405 or via email at Pasquale.Catalano@HydroOne.com.

Sincerely,

ORIGINAL SIGNED BY JOANNE RICHARDSON

Joanne Richardson

Attachment
cc. Joe Barile



Ontario Energy Board

Elimination of Load Transfer Arrangements Between Hydro One Networks Inc. and Essex Powerlines Corporation

Combined Service Area Amendment and Asset Transfer Application

May 19, 2017

PART I: SERVICE AREA AMENDMENT

1.1 Basic Facts

As a result of the Distribution System Code amendments of December 21, 2015, EB-2015-0006, Hydro One Networks Inc. ("Hydro One") and Essex Powerlines Corporation ("Essex") are jointly applying to the Ontario Energy Board ("OEB") for approval to amend the service areas of both distributors such that existing load transfer arrangements between the two LDCs are eliminated.

1.2 Identification of the Parties

1.2.1 Applicant

(Identify whether the applicant is a geographic and/or physical distributor)

Name of Applicant Hydro One Networks Inc.	Licence Number ED-2003-0043
Address 483 Bay Street, 7 th Floor, South Tower Toronto, ON M5G 2P5	Telephone Number 416-345-5405
	Facsimile Number 416-345-5866
	E-mail Address Regulatory@Hydroone.com
Contact Person Pasquale Catalano Regulatory Advisor	Telephone Number As listed above.
	Facsimile Number As listed above.
	E-mail Address Pasquale.Catalano@Hydroone.com

1.2.2 Co-Applicant or Other Distributor to the Service Area Amendment Application

Name of Co-Applicant or Other Distributor Essex Powerlines Corporation	Licence Number ED-2002-0499
Address: 2730 Highway 3 Oldcastle, ON N0R 1L0	Telephone Number 519-737-9811 ext. 217
	Facsimile Number 519-737-7064
	E-mail Address: jbarile@essexpowerlines.ca
Contact Person: Joe Barile General Manager	Telephone Number 519-737-9811 ext. 217
	Facsimile Number 519-737-7064
	E-mail Address jbarile@essexpowerlines.ca

1.3 Description of Proposed Service Area

1.3.1	<p>Provide a detailed service area description of the area(s) that is subject to the SAA and how the amendments should be reflected in Schedule 1 of the licence(s) of the distributor(s).</p> <p>The proposed amendments are premise-specific. Once this application is approved, Hydro One's licence will include all of the premises in Attachment 2. These will be removed from Essex's licence. The premises specified in Attachment 1 will be included in Essex's licence, once the application is approved.</p> <p>Essex Powerlines Corporation Licence ED-2002-0499 should be amended as follows</p> <p>SCHEDULE 1 DEFINITION OF DISTRIBUTION SERVICE AREA</p> <p>This Schedule specifies the area in which the Licensee is authorized to distribute and sell electricity in accordance with paragraph 8.1 of this Licence.</p> <ol style="list-style-type: none">1. The Town of LaSalle as of June 1, 1991<ul style="list-style-type: none">• Excluding the customers located at the following addresses:<ul style="list-style-type: none">○ 1520 North Townline, LaSalle, ON, N9J 2W7○ 1550 North Townline, LaSalle, ON, N9J 2W7○ 1600 North Townline, LaSalle, ON, N9J 2W72. The Town of Amherstburg as of December 31, 1997<ul style="list-style-type: none">• Excluding the customer located at the following address:<ul style="list-style-type: none">○ 528 Meloche Road, Amherstburg, ON, N9V 2Y8• Including the customers located at the following addresses:<ul style="list-style-type: none">○ 4141 North Townline, Amherstburg, ON, N9A 6Z6○ 4221 North Townline, Amherstburg, ON, N9A 6Z6○ 4431 North Townline, Amherstburg, ON, N9A 6Z6○ 4451 North Townline, Amherstburg, ON, N9A 6Z63. The Town of Tecumseh and the Village of St. Clair Beach as of December 31, 19984. The Town of Leamington as of December 31, 1998<ul style="list-style-type: none">• Including the customers at the following addresses:<ul style="list-style-type: none">○ 20 Hodgins Street, Leamington, ON, N8H 3N5○ 22 Hodgins Street, Leamington, ON, N8H 3N5○ 24 Hodgins Street, Leamington, ON, N8H 3N5○ 26 Hodgins Street, Leamington, ON, N8H 3N5○ 30 Hodgins Street, Leamington, ON, N8H 3N5○ 40 Hodgins Street, Leamington, ON, N8H 3N5○ 42 Hodgins Street, Leamington, ON, N8H 3N5○ 44 Hodgins Street, Leamington, ON, N8H 3N5○ 46 Hodgins Street, Leamington, ON, N8H 3N5○ 48 Hodgins Street, Leamington, ON, N8H 3N5○ 52 Hodgins Street, Leamington, ON, N8H 3N5○ 56 Hodgins Street, Leamington, ON, N8H 3N5○ 60 Hodgins Street, Leamington, ON, N8H 3N5○ 62 Hodgins Street, Leamington, ON, N8H 3N5○ 64 Hodgins Street, Leamington, ON, N8H 3N5 <p>Hydro One's Distribution Licence ED-2003-0043 will not need to be amended</p>
-------	--

1.3.2	<p>Provide maps or diagrams of the area(s) that is the subject of the SAA application.</p> <p>Please see Attachments 3 and 4.</p>
1.3.3	<p>Provide a description of the type of physical connection(s); i.e., individual customer; residential subdivision, commercial or industrial customer.</p> <p>26 Hydro One customers are proposed to be transferred to Essex:</p> <ul style="list-style-type: none"> • 21 Residential Customers • 3 General Service Customers • 1 Microfit Customer • 1 Sentinel Light Account <p>5 Essex customers are proposed to be transferred to Hydro One:</p> <ul style="list-style-type: none"> • 4 Residential Customers • 1 General Service Customer

1.4 Information on Affected Load Transfer Customers

1.4.1	<p>Provide a total number of load transfer arrangements between distributors.</p> <p>Section 1.3.3 addresses the majority of existing load transfer arrangements between the two distributors. Given that Essex and Hydro One are embedded in each other, there are some load transfer arrangements that are not being addressed by this application.</p>
1.4.2	<p>Provide a number of load transfers eliminated in this application.</p> <p>Please see 1.3.3.</p>
1.4.3	<p>Provide a number of customers to be transferred from Hydro One to Essex.</p> <p>Please see 1.3.3.</p>
1.4.4	<p>Provide a number of customers to be transferred from Essex to Hydro One.</p> <p>Please see 1.3.3.</p>
1.4.5	<p>Provide a list of affected load transfer customers. (Customer listing must include customer address, name, billing address, rate class and meter number)</p> <p>Please see Attachments 1 and 2 for all of the Hydro One and Essex customers impacted</p>
1.4.6	<p>Provide written confirmation that all affected persons have been provided with specific and factual information about the service area amendment(s).</p> <p>Letters informing customers of the proposed amendments were sent by both Essex and Hydro One to their respective customers prior to May 19, 2017.</p>

1.5 Impacts Arising from the Amendment(s)

1.5.1

Use the table below to describe the impact on the average residential customers' total bill that arises as a result of the service area amendment(s) before and after rate mitigation is applied. Use delivery charge on consumer's bill (including cost of losses and excluding all rate riders). Use 750 kWh / month for the average residential consumer. Provide any additional information as required.

1.5.1 Customers moving from Essex to Hydro One

The delivery charges will increase for the residential and general service customers moving from Essex to Hydro One. Table 1 shows the delivery impact on total bill for these customers at the typical monthly consumption levels by rate class.

Table 1: Bill Impacts at Typical Consumption Levels for Customers Moving from Essex (Rates effective May 1, 2017) to Hydro One (Rates effective January 1, 2017)

Monthly Consumption (kWh)	Essex Powerlines Corporation				Hydro One Networks				Average Monthly Delivery Impact on Total Bill (\$)
	Rate Class	Fixed Charge (\$)	Variable Charge (\$/kWh or \$/kW)*	Delivery Charge (\$) **	Rate Class	Fixed Charge (\$)	Variable Charge (\$/kWh or \$/kW)	Delivery Charge (\$) **	
750	RES	20.31	0.0088	39.09	R1	33.77	0.0230	67.12	28.03
2,000	GS<50	35.13	0.0130	90.39	GSE	27.87	0.0560	183.31	92.92

* Includes low voltage charge

** Includes RTSR charges and cost of losses.

The customers moving from Essex to Hydro One will receive a monthly bill credit to offset the increase in delivery charges¹. In accordance with the Ontario Energy Board's (OEB) direction provided in "Amendments to the Distribution System Code", the credit will be calculated using each customer's average monthly consumption over the most recent 12 months at the time the application is filed for the OEB's approval. The credit will be fixed at this calculated level and remain in place as long as the customer remains the account holder. Any change to the Delivery charge that may result from the Ontario government's Fair Hydro Plan is not included in the credit calculation. Once the Fair Hydro Plan is finalized, the credit will be recalculated accordingly.

The OEB has confirmed that a deferral account will be provided for the purpose of tracking the rate mitigation costs for future recovery.

¹ For the purpose of credit calculations, the delivery charge includes distribution charges, transmission charges and cost of losses, but excludes any rate riders as specified by the OEB in "[Amendments to the Distribution System Code, Section C \(File No.: EB-2015-0006\)](#)".

1.5.2 Customers moving from Hydro One to Essex

As shown in Table 2, customers moving from Hydro One to Essex will see a reduction in their monthly delivery charges. As such, no credits are required for these customers.

Table 2: Bill Impacts at Typical Consumption Levels for Customers Moving from Hydro One (Rates effective January 1, 2017) to Essex (Rates effective May 1, 2017)

Monthly Consumption (kWh)	Hydro One Networks				Essex Powerlines Corporation				Average Monthly Delivery Impact on Total Bill (\$)
	Rate Class	Fixed Charge (\$)	Variable Charge (\$/kWh or \$/kW)	Delivery Charge (\$) **	Rate Class	Fixed Charge (\$)	Variable Charge (\$/kWh or \$/kW) *	Delivery Charge (\$) **	
750	R1	33.77	0.0230	67.12	RES	20.31	0.0088	39.09	(28.03)
2,000	GSE	27.87	0.0560	183.31	GS<50	35.13	0.013	90.39	(92.92)
35,000	GSD	89.48	16.0236	2,304.49	GS 50 to 2999	232.69	2.5607	952.82	(1351.67)

* Includes low voltage charge

** Includes RTSR charges and cost of losses.

1.5.2 **Provide a description of any assets which may be stranded or become redundant after completion of the service area amendment(s). Please explain why these assets could not be transferred to the physical distributor.**

No assets will be stranded as a result of this amendment.

1.5.3 **Identify costs for stranded equipment that would need to be de-energized or removed.**

This would not be applicable as there will not be any stranded assets in this case. See 1.5.2.

1.5.4 **Identify any assets that will be transferred to and/or from the applicant(s). If an asset transfer is required, please complete Part II of the application form.**

Please see Part 2 of this application for more details.

1.5.5

Include an estimate of the credit required for each customer to ensure there is not a negative impact on the total bill.

The customers moving from Essex to Hydro One will receive a monthly bill credit to offset the increase in delivery charges². In accordance with the OEB's direction provided in "Amendments to the Distribution System Code", the credit will be calculated using each customer's average monthly consumption over the most recent 12 months at the time the application is filed for the OEB's approval. The credit will be fixed at this calculated level and remain in place as long as the customer remains the account holder.

Table 3: Credit Amounts to Eliminate the Increase in Delivery Charges for Customers Moving from Essex to Hydro One (Rates effective January 1, 2017)

Index	Average Monthly Consumption (kWh)	Essex Powerlines Corporation		Hydro One Networks		Monthly Credit (\$)
		Rate Class	Delivery Charges (\$)	Rate Class	Delivery Charges (\$)	
Cust1	997	RES	45.02	R1	77.84	32.82
Cust2	1232	RES	50.65	R1	88.04	37.39
Cust3	2809	RES	88.48	R1	156.50	68.02
Cust4	7755	GS<50	247.11	GSE	628.31	381.20
Cust5	1143	RES	48.52	R1	84.18	35.66

As shown in Table 2 in Section 1.5.1, customers moving from Hydro One to Essex will see a reduction in their monthly delivery charges. As such, no credits are required for these customers.

Unmetered customers

For any Street Light, Sentinel Light, and USL accounts being transferred between Essex and Hydro One, no Rate mitigation will be completed.

² For the purpose of credit calculations, the delivery charge includes distribution charges, transmission charges and cost of losses, but excludes any rate riders as specified by the OEB in "[Amendments to the Distribution System Code, Section C \(File No.: EB-2015-0006\)](#)".

PART II: TRANSFER OF ASSETS (S. 86(1)(b))

2.1 Description of the Assets to Be Transferred

2.1.1	<p>Provide a description of the assets that are the subject of the transaction. (Attach a detailed list of assets to be sold including value of assets)</p> <p>See Attachments 1 and 2.</p>
2.1.2	<p>Indicate where the assets are located – whether in the applicant’s service territory or in the recipient’s service territory (if applicable). Please include a map of the location.</p> <p>The assets are located within the territory that will be transferred from the geographical distributor to the physical distributor, if the application is approved. Please see Attachments 3 and 4 for maps indicating the location of the assets.</p>
2.1.3	<p>Indicate which distributor’s customers are currently served by the assets.</p> <p>Currently the assets are being used to service the geographical distributor’s customers. Once the application is approved, the assets will continue to service the same customers they currently service. The customers will be transferred from the geographical distributor to the physical distributor.</p>

2.2 Description of the Sale Transaction

2.2.1	<p>The value of the assets to be transferred shall be determined based on net book value (NBV). Attach the details of the associated cash consideration to be given and received by each of the parties to the transaction.</p> <p>Hydro One will sell the assets servicing current Hydro One Geographical Customers to Essex for \$26,325.00 plus applicable taxes. A detailed breakdown of the assets is included in Attachment 1.</p> <p>Essex will sell the assets servicing current Essex Geographical Customers to Hydro One for \$20,806.55 plus applicable taxes. A detailed breakdown of the assets is included in Attachment 2.</p>
2.2.2	<p>Will the transfer impact any other parties (e.g. joint users of poles) including any agreements with third parties? If yes, please specify how.</p> <p>No</p>

PART III: CERTIFICATION AND ACNOWLEDGEMENT

Applicant


I certify that the information contained in this application and in the documents provided are true and accurate.

Signature of Key Individual ORIGINAL SIGNED BY JOANNE RICHARDSON	Name and Title of Key Individual Joanne Richardson Director - Major Projects and Partnerships, Regulatory Affairs	Date MAY 19, 2017
--	--	----------------------

(Must be signed by a key individual. A key individual is one that is responsible for executing the following functions for the applicant: matters related to regulatory requirements and conduct, financial matters and technical matters. These key individuals may include the chief executive officer, the chief financial officer, other officers, directors or proprietors.)

Co-Applicant (if applicable)

I certify that the information contained in this application and in the documents provided are true and accurate.

Signature of Key Individual 	Name and Title of Key Individual Joe Barile General Manager	Date May 15, 2017
--	---	----------------------

(Must be signed by a key individual. A key individual is one that is responsible for executing the following functions for the applicant: matters related to regulatory requirements and conduct, financial matters and technical matters. These key individuals may include the chief executive officer, the chief financial officer, other officers, directors or proprietors.)

Geographical Distributor LTLT Customer and Asset Transfer Information

Map #	Primary Customer Name	Number	Street	City	Postal Code	Lot	Concession	Township	Meter ID No.	Classification Figure #	Geographical Distributor Rate Class, include Tariff (Res, Scomm + RPP, DCB etc.)	
		Premise Address							Meter Information		Customer care Billing Information	
1		20	HODGINS ST	MERSEA	N8H 3N5			2	MERSEA	J2060707	Fig.4	R1_TOU_RPP
1		22	HODGINS ST	MERSEA	N8H 3N5	PT5			MERSEA	J2995901	Fig.13	GSE_2TRRPP
1		22	HODGINS ST	MERSEA	N8H 3N5	PT5		2	MERSEA	J2060708	Fig.4	R1_DCB
1		24	HODGINS ST	MERSEA	N8H 3N5				MERSEA	J2060706	Fig.5	R1_TOU_RPP
1		24	HODGINS ST	MERSEA	N8H 3N5				MERSEA	J3375039	Fig.3	MICROFIT
1		26	HODGINS ST	MERSEA	N8H 3N5	5		2	MERSEA	J2060705	Fig.13	R1_TOU_RPP
1		30	HODGINS ST	MERSEA	N0P 2K0	5		2	MERSEA	J3010727	Fig.13	R1_TOU_RPP
1		38	HODGINS ST	MERSEA	N8H 3N5	PT5		2	MERSEA	J2060985	Fig.3	R1_TOU_RPP
1		40	HODGINS ST, FRNT	MERSEA	N8H 3N5	PT 5		2	MERSEA	J2060986	Fig.7	R1_DCB
1		40	HODGINS ST, REAR	MERSEA	N8H 3N5	5		2	MERSEA	J2060704	Fig.3	R1_TOU_RPP
2		42	HODGINS ST	MERSEA	N8H 3N5	PT 5		2	MERSEA	J2060988	Fig.3	R1_TOU_RPP
2		44	HODGINS ST	MERSEA	N8H 3N5	5		2	MERSEA	J2060987	Fig.7	R1_TOU_RPP
2		46	HODGINS ST	MERSEA	N8H 3N5	5		2	MERSEA	J2060701	Fig.7	R1_TOU_RPP
2		48	HODGINS ST, SHOP	MERSEA	N8H 3N5	5		2	MERSEA	J2060702	Fig.3	GSE_TOURPP
2		52	HODGINS ST	MERSEA	N8H 3N5	PT5		2	MERSEA	J3351923	Fig.4	R1_TOU_RPP
2		56	HODGINS ST	MERSEA	N8H 3N5	PT5		2	MERSEA	J2060990	Fig.4	R1_TOU_RPP
2		60	HODGINS ST	MERSEA	N8H 3N5	PT5		2	MERSEA	J2060992	Fig.8	R1_DCB
2		62	HODGINS ST	MERSEA	N8H 3N5	PT5		2	MERSEA	J2060991	Fig.8	R1_TOU_RPP
2		64	HODGINS ST, 2	MERSEA	N8H 3N5	PT5		2	MERSEA	J3232641	Fig.3	R1_TOU_RPP
2		64A	HODGINS ST	MERSEA	N8H 3N5	PT5		2	MERSEA	J3542509	Fig.7	R1_TOU_RPP
3		4141	COUNTY RD 8	ANDERDON	K0G 1E0	14		4	ANDERDON	J3200824	Fig.4	R1_2TR_RPP
3		4221	NORTH TOWN LINE RD	ANDERDON	L0B 1B0	14		4	ANDERDON	J3551793	Fig.13	R1_2TR_RPP
3		4431	COUNTY RD 8, HSE	ANDERDON	K0G 1E0	14		4	ANDERDON	J2785988	Fig.2	R1_2TR_RPP
3		4451	COUNTY RD 8	ANDERDON	K0G 1E0	14		4	ANDERDON	J2785989	Fig.1	R1_2TR_RPP
4		129	ELLIOTT STREET	MERSEA	N8H 3V5	6		3	MERSEA	J3443290	Fig.16	C_GSD_DCB
4		129	ELLIOTT STREET	MERSEA	N8H 3V5	6		3	MERSEA	Unmetered		SNL_DCB

	Figure #1	Figure #2	Figure #3	Figure #4	Figure #5	Figure #6	Figure #7	Figure #8	Figure #9	Figure #10	Figure #11	Figure #12	Figure #13	Figure #14	Figure #15	Primary Wire Line
Main Page	1	1	6	5	1	0	4	2	0	0	0	0	4	0	0	
Special Case #1																
Special Case #2																
Special Case #3																
Special Case #4																
Special Case #5																
Special Case #6																
O/H	20	70	20	70		50		50		63		63				
U/G	63		63		63		63		63		63					
Primary									20	20			20		20	
Neutral									20	20			20		20	
Subtotal	1	1	6	5	1	0	4	2	0	0	0	0	4	0	0	0
Total O/H	20	70	120	350	0	0	0	100	0	0	0	0	0	0	0	Total Secondary O/H (m)
Total U/G	63	0	378	0	63	0	252	0	0	0	0	0	0	0	0	Total Secondary U/G (m)
Total Primary	0	0	0	0	0	0	0	0	0	0	0	0	160	0	0	Total Primary (m)
Toal Buss (m)	1440															

POLES	30	35	40	45	50	55	Total
Main Page	4	6	1	0	0	0	11
Special Case #1							0
Special Case #2							0
Special Case #3							0
Special Case #4							0
Special Case #5							0
Special Case #6							0
TOTAL	4	6	1	0	0	0	11

Transformers	5	10	15	25	50	75	100	167	Total
Main Page	0	0	0	5	0	1	0	0	6
Special Case #1									0
Special Case #2									0
Special Case #3									0
Special Case #4									0
Special Case #5									0
Special Case #6									0
TOTAL	0	0	0	5	0	1	0	0	6
Sentinel Lights (Total)	1								

ASSET SUMMARY

Poles	30	35	40	45	50	55	Total		
	4	6	1	0	0	0	11		
Transformers	5	10	15	25	50	75	100	167	Total
	0	0	0	5	0	1	0	0	6
Primary Wire (metres)	160								
Secondary O/H Wire (Metres)	2100								
Secondary U/G Wire (Metres)	756								
Current Transformers	0								
Sentinel Lights	1								
Easements	0								

Geographical Distributor LTLT Customer and Asset Transfer Information

[illegible]

	Figure #1	Figure #2	Figure #3	Figure #4	Figure #5	Figure #6	Figure #7	Figure #8	Figure #9	Figure #10	Figure #11	Figure #12	Figure #13	Figure #14	Figure #15	Primary Wire Line	
Main Page	0	0	0	0	0	0	0	0	0	0	0	0	0	0	0		
Special Case #1																	
Special Case #2																	
Special Case #3																	
Special Case #4																	
Special Case #5																	
Special Case #6																	
O/H																	
U/G																	
Primary																	
Neutral																	
Subtotal	0	0	0	0	0	0	0	0	0	0	0	0	0	0	0	0	
Total O/H	240	0	0	0	0	0	0	0	0	0	0	0	0	0	0	Total Secondary O/H (m)	240
Total U/G	31	0	0	0	0	0	0	0	0	0	0	0	0	0	0	Total Secondary U/G (m)	31
Total Primary	820.6	0	0	0	0	0	0	0	0	0	0	0	0	0	0	Total Primary (m)	820.6
Toal Buss (m)	0																

POLES	30	35	40	45	50	55	Total
Main Page	0	1	1	0	1	0	3
Special Case #1							0
Special Case #2							0
Special Case #3							0
Special Case #4			3				3
Special Case #5			2				2
Special Case #6							0
TOTAL	0	1	6	0	1	0	8

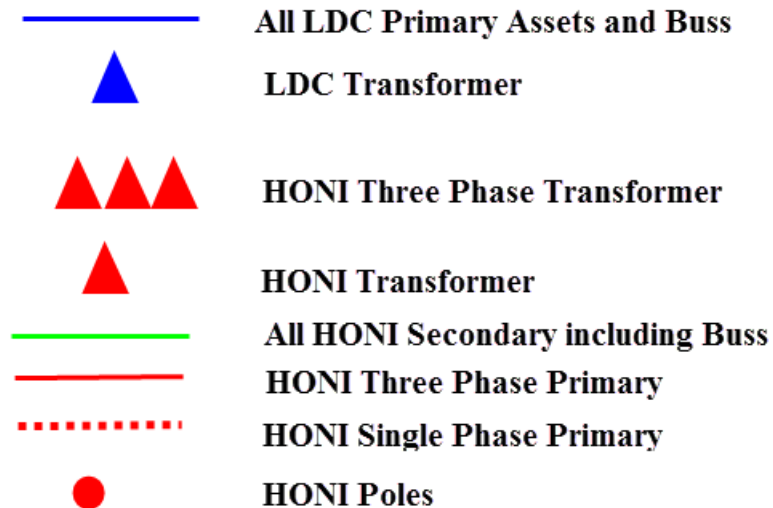
Transformers	5	10	15	25	50	75	100	167	Total
Main Page	0	0	0	0	1	0	0	0	1
Special Case #1									0
Special Case #2									0
Special Case #3									0
Special Case #4					3				3
Special Case #5					0				0
Special Case #6									0
TOTAL	0	0	0	0	4	0	0	0	4
Sentinel Lights (Total)	0								

ASSET SUMMARY

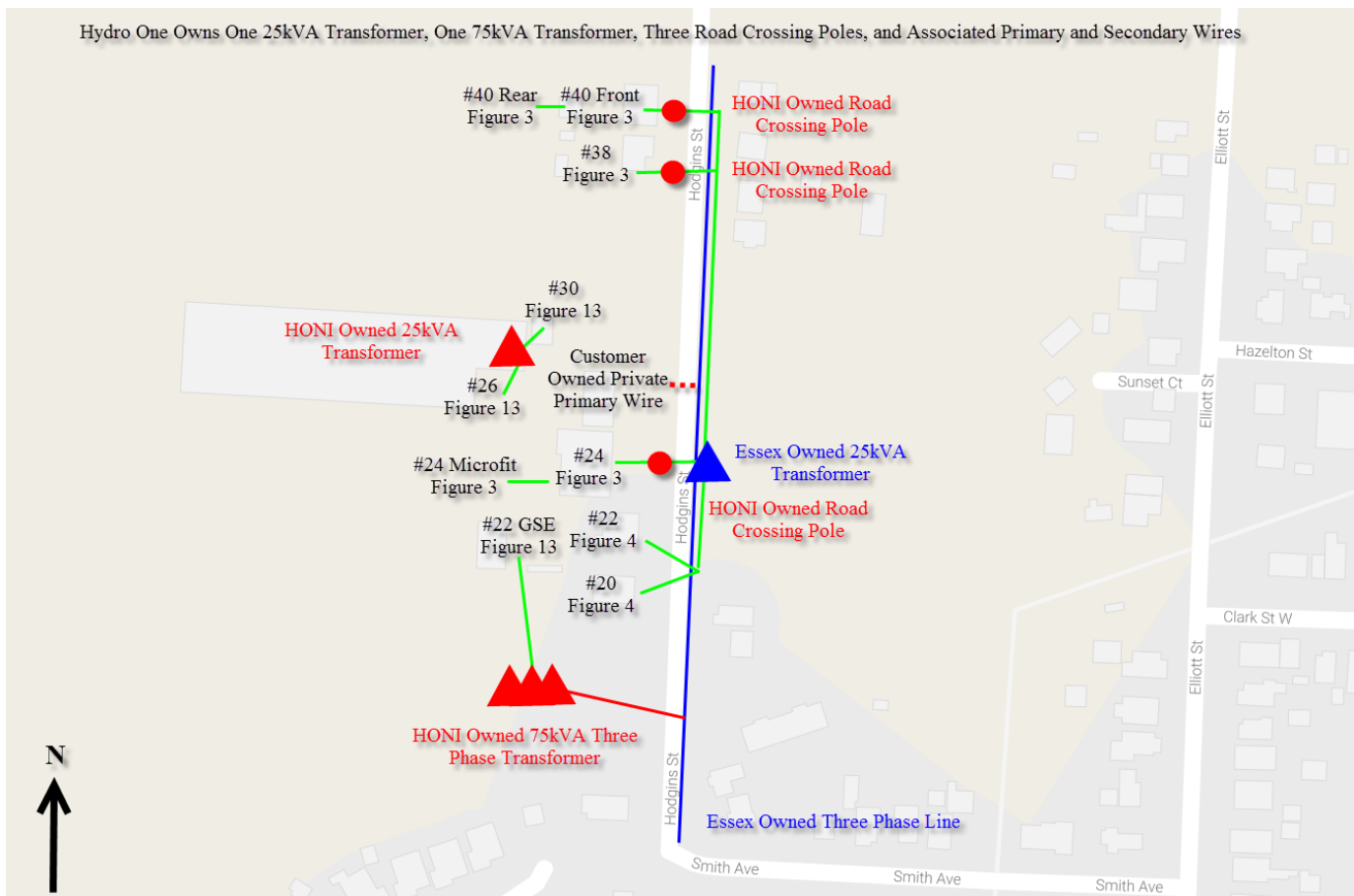
Poles	30	35	40	45	50	55	Total		
	0	1	6	0	1	0			
Transformers	5	10	15	25	50	75	100	167	Total
	0	0	0	0	4	0	0	0	
Primary Wire (metres)	820.6								
Secondary O/H Wire (Metres)	240								
Secondary U/G Wire (Metres)	31								
Current Transformers	0								
Sentinel Lights	0								
Easements	0								

Hydro One Geographical LDC Maps for LTLT Elimination with Essex Powerlines Corporation as Physical LDC

Maps Legend



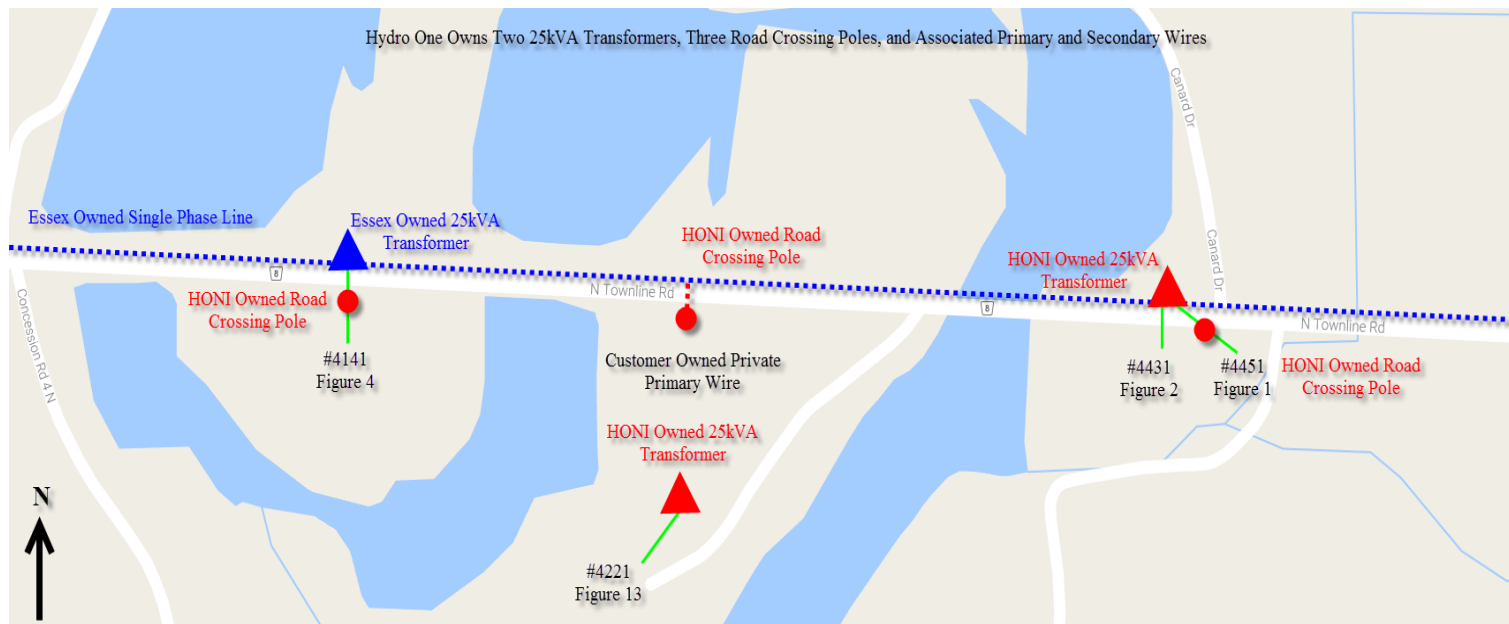
Map #1 -



Map #2 –

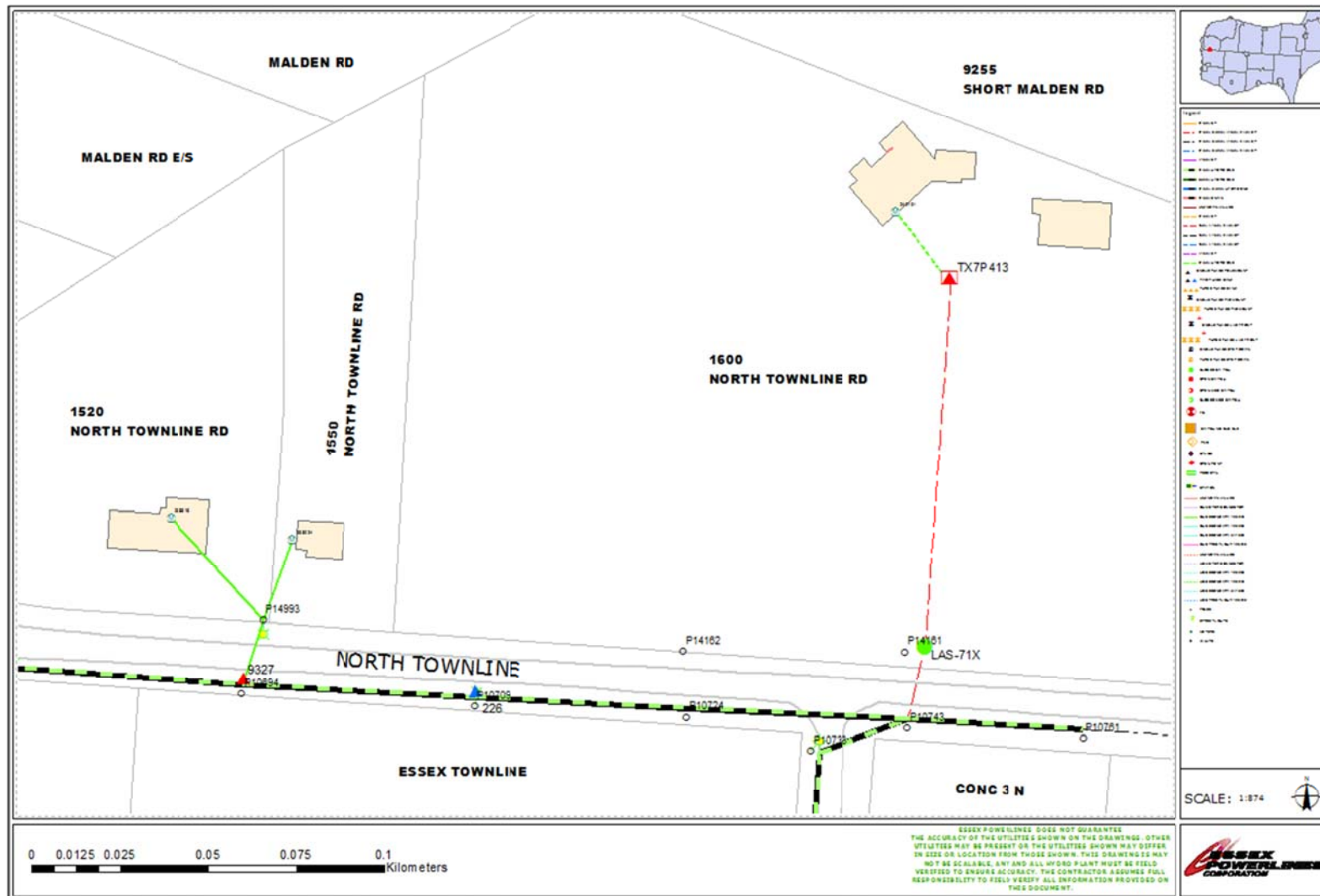


Map #3 –



Elliott Street (Lot 6 Conc. 3)
Fig. #16
Transformer # 13276 / 1000kVA

MAP # 1



MAP #2



MAP #3

