

June 21, 2017

Ms. Kirsten Walli  
Board Secretary  
Ontario Energy Board  
PO Box 2319  
2300 Yonge Street, 27th Floor  
Toronto ON M4P 1E4

Dear Ms. Walli:

**Re: Alectra Utilities Corporation – Burlington Hydro Inc. Joint Application for Elimination of Load Transfer Arrangements  
Board File Number EB-2017-0095**

Introduction

Alectra Utilities Corporation (“Alectra Utilities”) and Burlington Hydro Inc. (“Burlington Hydro”) (collectively, the “Applicants”) are jointly applying to make a further amendment to their respective licences to eliminate an additional Long Term Load Transfer (“LTLT”) arrangement between the Applicants.

Summary of the Facts

The Applicants filed a joint application on February 15, 2017 with the Ontario Energy Board (“OEB”) under sections 74 and 86(1)(b) of the *Ontario Energy Board Act*. The application was filed pursuant to the Distribution System Code (the “Code”) amendments made in OEB proceeding EB-2015-0006 and in accordance with the OEB’s filing guidelines for combined service area amendments and sale of assets.

The application sought to transfer four customers (two Residential customers and two General Service <50kW customers) from Alectra Utilities to Burlington Hydro. The result of the LTLT elimination was a reduction in the monthly delivery charges for the customers; no mitigation credits were required. In the application, the Applicants requested the OEB’s approval to sell the distribution assets servicing the affected four customers to Burlington Hydro. On May 4, 2017, the OEB issued its decision, granting the application.

Recently, the Applicants have become aware that Alectra Utilities is the geographic distributor to an additional Residential customer, located at 348 Mountain Brow Road in Hamilton (PIN # 17072-0012).

The Application

The Applicants have both agreed that this connection constitutes an LTLT between Alectra Utilities and Burlington Hydro. This customer was not included in the above-referenced previous application. The Applicants are jointly applying for a further LTLT elimination, by way of this letter (a map is attached).

**Alectra Utilities Corporation**

55 John Street North, Hamilton, ON L8R 3M8 | t 905 522 9200

[alectrautilities.com](http://alectrautilities.com)

The Applicants identify that no sale of distribution assets is required, as a result of the proposed further LTLT elimination. The Applicants also observe that the transfer would result in a reduction in the customer's monthly delivery charges; therefore no mitigation credits would be necessary.

The affected customer has been notified of the intended transfer.

#### Relief Sought

The Applicants respectfully request a further amendment to their Distribution Licences, as follows:

- Schedule 1 of Alectra Utilities Corporation's (the Horizon Rate Zone) Electricity Distribution Licence (ED-2016-0360) be amended to exclude the customer located at 348 Mountain Brow Road in Hamilton (PIN # 17072-0012).
- Schedule 1 of Burlington Hydro Inc.'s Electricity Distribution Licence (ED-2003-0004) be amended to include the customer located at 348 Mountain Brow Road in Hamilton (PIN # 17072-0012).

Two hard copies of this letter will follow via courier.

Should you have any questions, please do not hesitate to contact the undersigned.

All of which is respectfully submitted.

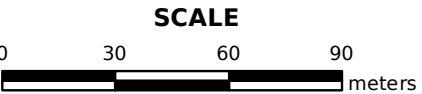
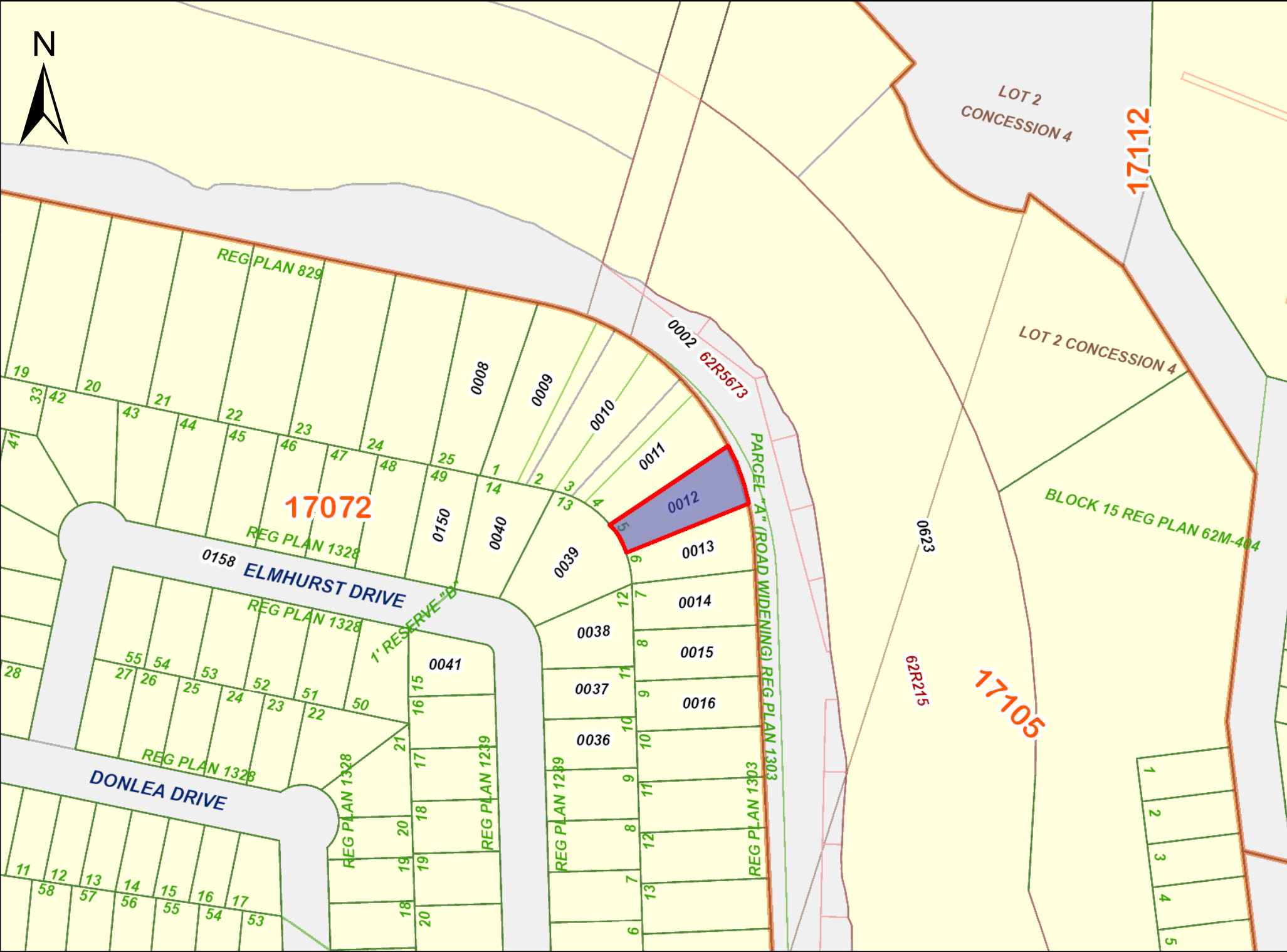
#### ***[ORIGINAL SIGNED BY]***

Indy J. Butany-DeSouza, MBA  
Vice President, Regulatory Affairs  
Alectra Utilities Corporation  
Tel: (905) 821-5727

#### ***[ORIGINAL SIGNED BY]***

Joe Saunders  
Vice President Regulatory Compliance and Asset Management  
Burlington Hydro Inc.  
Tel: (905) 332-2258

Attachment



PROPERTY INDEX MAP  
WENTWORTH(No. 62)

LEGEND

FREEHOLD PROPERTY	
LEASEHOLD PROPERTY	
LIMITED INTEREST PROPERTY	
CONDOMINIUM PROPERTY	
RETIRED PIN (MAP UPDATE PENDING)	
PROPERTY NUMBER	0449
BLOCK NUMBER	08050
GEOGRAPHIC FABRIC	
EASEMENT	

THIS IS NOT A PLAN OF SURVEY

NOTES

REVIEW THE TITLE RECORDS FOR COMPLETE  
PROPERTY INFORMATION AS THIS MAP MAY  
NOT REFLECT RECENT REGISTRATIONS

THIS MAP WAS COMPILED FROM PLANS AND  
DOCUMENTS RECORDED IN THE LAND  
REGISTRATION SYSTEM AND HAS BEEN PREPARED  
FOR PROPERTY INDEXING PURPOSES ONLY

FOR DIMENSIONS OF PROPERTIES BOUNDARIES SEE  
RECORDED PLANS AND DOCUMENTS

ONLY MAJOR EASEMENTS ARE SHOWN

REFERENCE PLANS UNDERLYING MORE RECENT  
REFERENCE PLANS ARE NOT ILLUSTRATED

