

Table 1: R Square and Adjusted R Square Values

Class	R Square	Adjusted R Square
Residential	78%	77%
General Service < 50 kW	72%	71%
General Service 50 to 4,999 kW	3%	0%
Power Purchased	96%	96%

Table 2: Summary of Load and Customer/Connection Forecast

Year	Billed (GWh)	Growth (GWh)	Percent Change	Customer/Connection Count	Growth
Billed Energy (GWh) and Customer Count / Connections					
2013 Board Approved	233.4			18,369	
2007 Actual	219.6			16,645	
2008 Actual	226.8	7.2	3.3%	17,044	399
2009 Actual	229.1	2.3	1.0%	17,361	317
2010 Actual	231.9	2.8	1.2%	17,552	191
2011 Actual	233.6	1.7	0.7%	17,776	224
2012 Actual	230.0	(3.7)	(1.6%)	17,903	127
2013 Actual	232.8	2.9	1.3%	18,286	383
2014 Actual	238.3	5.5	2.4%	18,736	450
2015 Actual	242.6	4.2	1.8%	19,073	337
2016 Actual	242.0	(0.6)	(0.2%)	19,398	325
2017 Test - Normalized	239.3	(2.7)	(1.1%)	19,733	335

Table 3: Billed Energy by Rate Class

Year	Residential	General Service < 50 kW	General Service 50 to 4,999 kW	Sentinel Lighting	Street Lighting
Billed Energy (GWh)					
2013 Board Approved	148.1	31.8	51.3	0.1	1.5
2007 Actual	149.5	28.6	39.3	0.1	1.5
2008 Actual	150.8	28.6	45.3	0.1	1.5
2009 Actual	151.2	28.3	47.5	0.1	1.6
2010 Actual	149.2	29.4	51.1	0.1	1.6
2011 Actual	150.9	30.8	49.9	0.1	1.5
2012 Actual	145.7	30.9	51.1	0.1	1.6
2013 Actual	148.8	31.0	50.9	0.1	1.5
2014 Actual	153.3	32.2	50.6	0.1	1.6
2015 Actual	151.9	34.4	54.6	0.1	1.1
2016 Actual	149.5	33.4	58.0	0.1	0.5
2017 Test - Normalized	149.2	32.9	56.1	0.1	0.5

Table 4: Number of Customers / Connections by Rate Class

Year	Residential	General Service < 50 kW	General Service 50 to 4,999 kW	Sentinel Lighting	Street Lighting
Number of Customers/Connections					
2013 Board Approved	14,189	910	66	237	2,889
2007 Actual	12,991	819	71	186	2,489
2008 Actual	13,277	836	73	186	2,588
2009 Actual	13,533	855	72	193	2,625
2010 Actual	13,651	865	68	201	2,685
2011 Actual	13,779	896	67	225	2,728
2012 Actual	13,943	914	68	172	2,728
2013 Actual	14,181	949	67	168	2,843
2014 Actual	14,509	991	67	169	2,923
2015 Actual	14,862	1,001	72	166	2,898
2016 Actual	15,202	1,016	76	166	2,863
2017 Test - Normalized	15,459	1,042	76	164	2,918

Table 5: Annual Usage per Customer/Connection by Rate Class

Year	Residential	General Service < 50 kW	General Service 50 to 4,999 kW	Sentinel Lighting	Street Lighting
Energy Usage per Customer/Connection (kWh per customer/connection)					
2013 Board Approved	10,441	34,924	777,717	443	525
2007 Actual	11,511	34,967	553,811	679	601
2008 Actual	11,360	34,185	620,129	668	593
2009 Actual	11,170	33,071	659,351	632	601
2010 Actual	10,926	33,989	751,894	581	588
2011 Actual	10,948	34,331	745,100	490	534
2012 Actual	10,451	33,846	752,954	659	575
2013 Actual	10,496	32,698	760,026	606	518
2014 Actual	10,568	32,507	753,235	637	556
2015 Actual	10,220	34,361	764,144	625	382
2016 Actual	9,835	32,877	767,108	640	187
2017 Test - Normalized	9,649	31,544	741,980	640	187

Table 6: Statistical Results

Statistic	Value
R Square	96.1%
Adjusted R Square	96.0%
F Test	565.8
MAPE (Monthly)	2.1%
T-stats by Coefficient	
Heating Degree Days	38.7
Cooling Degree Days	16.7
Number of Days in Month	9.5

Spring Fall Flag	(6.7)
Number of Customers - 3 Main Classes	7.0
Constant	(4.8)

Table 7: Total System Purchases

Year	Actual	Predicted	% Difference
Purchased Energy (GWh)			
2007	241.2	245.1	1.6%
2008	245.6	243.8	(0.8%)
2009	247.2	243.4	(1.5%)
2010	250.2	246.7	(1.4%)
2011	246.8	249.1	0.9%
2012	245.1	247.0	0.8%
2013	251.8	250.1	(0.7%)
2014	253.3	254.5	0.5%
2015	255.8	255.3	(0.2%)
2016	259.4	261.4	0.8%
2017 Test - Normalized		259.1	
2017 Test - Normalized - 20 Year Trend		260.0	

Year
2007
2008
2009
2010
2011
2012
2013
2014
2015
2016

Table 8: Conversion of Total System Purchases to Total Billed

Year	Power Purchased	Loss Factor	Billed
2017 Test - Normalized	259.1	1.0731	241.4

Table 9: Historical Customer/Connection Data

Year	Residential	General Service < 50 kW	General Service 50 to 4,999 kW	Sentinel Lighting	Street Lighting
Number of Customers/Connections					
2007	12,991	819	71	186	2,489
2008	13,277	836	73	186	2,588
2009	13,533	855	72	193	2,625
2010	13,651	865	68	201	2,685
2011	13,779	896	67	225	2,728
2012	13,943	914	68	172	2,728
2013	14,181	949	67	168	2,843
2014	14,509	991	67	169	2,923
2015	14,862	1,001	72	166	2,898
2016	15,202	1,016	76	166	2,863

Table 10: Growth Rate in Customer/Connections

Year	Residential	General Service < 50 kW	General Service 50 to 4,999 kW	Sentinel Lighting	Street Lighting
Growth Rate in Customers/Connections					
2007					
2008	2.2%	2.1%	2.8%	0.0%	4.0%
2009	1.9%	2.3%	(1.4%)	3.8%	1.4%
2010	0.9%	1.2%	(5.6%)	4.1%	2.3%

2011	0.9%	3.6%	(1.5%)	11.9%	1.6%
2012	1.2%	2.0%	1.4%	(23.5%)	0.0%
2013	1.7%	3.9%	(1.3%)	(2.4%)	4.2%
2014	2.3%	4.4%	0.2%	0.8%	2.8%
2015	2.4%	0.9%	6.5%	(2.2%)	(0.9%)
2016	2.3%	1.6%	5.7%	0.2%	(1.2%)
Geo Mean - 2007 to 2016	1.7%	2.5%	0.1%	(1.4%)	1.9%

Table11: Customer/Connection Forecast

Year	Residential	General Service < 50 kW	General Service 50 to 4,999 kW	Sentinel Lighting	Street Lighting
Forecast number of Customers/Connections					
2017	15,459	1,042	76	164	2,918

Table 12: Historical Annual Usage per Customer Before Allocation of Hydro One Load Transfers

Year	Residential	General Service < 50 kW	General Service 50 to 4,999 kW	Sentinel Lighting	Street Lighting
Annual kWh Usage Per Customer/Connection					
2007	11,446	34,754	553,811	679	601
2008	11,295	33,971	620,129	668	593
2009	11,112	32,881	659,351	632	601
2010	10,867	33,744	751,894	581	588
2011	10,893	34,095	745,100	490	534
2012	10,395	33,623	752,954	659	575
2013	10,434	32,492	760,026	606	518
2014	10,502	32,305	753,235	637	556
2015	10,163	34,199	764,144	625	382
2016	9,784	32,711	767,108	640	187

Table 13: Growth Rate in Usage Per Customer/Connection

Year	Residential	General Service < 50 kW	General Service 50 to 4,999 kW	Sentinel Lighting	Street Lighting
Growth Rate in Usage Per Customer/Connection					
2007					
2008	(1.3%)	(2.3%)	12.0%	(1.7%)	(1.4%)
2009	(1.6%)	(3.2%)	6.3%	(5.3%)	1.4%
2010	(2.2%)	2.6%	14.0%	(8.2%)	(2.0%)
2011	0.2%	1.0%	(0.9%)	(15.6%)	(9.2%)
2012	(4.6%)	(1.4%)	1.1%	34.4%	7.7%
2013	0.4%	(3.4%)	0.9%	(8.0%)	(10.0%)
2014	0.7%	(0.6%)	(0.9%)	5.1%	7.4%
2015	(3.2%)	5.9%	1.4%	(2.0%)	(31.3%)
2016	(3.7%)	(4.3%)	0.4%	2.5%	(50.9%)
Geo Mean - 2007 to 2016	(1.7%)	(0.7%)	3.7%	(0.7%)	(12.1%)

Table 14: Forecast Annual kWh Usage per Customer/Connection

Year	Residential	General Service < 50 kW	General Service 50 to 4,999 kW	Sentinel Lighting	Street Lighting
Forecast Annual kWh Usage per Customers/Connection					

2017	9,784	32,711	767,108	640	187
------	-------	--------	---------	-----	-----

Table 15: Non-normalized Weather Billed Energy Forecast

Year	Residential	General Service < 50 kW	General Service 50 to 4,999 kW	Sentinel Lighting	Street Lighting
NON-normalized Weather Billed Energy Forecast (GWh)					
2017(Not Normalized)	151.247	34.086	58.031	0.105	0.547

Table 16: Weather Sensitivity by Rate Class

Residential	General Service < 50 kW	General Service 50 to 4,999 kW	Sentinel Lighting	Street Lighting
Weather Sensitivity				
83%	83%	65%	0%	0%

Table 17: Hydro One Load Transfers

Year	Hydro One Load Transfers (GWh)
2007 - Actual	1.0
2008 - Actual	1.1
2009 - Actual	1.0
2010 - Actual	1.0
2011 - Actual	1.0
2012 - Actual	1.0
2013 - Actual	1.1
2014 - Actual	1.2
2015 - Actual	1.0
2016 - Actual	1.0
2017 - Test Year Forecast	1.0

Table 18: Difference Between Normalized and Non-normalized Bill Forecast

Year	Table 3-8 (A)	Table 3-15 (B)	Table 3-17 (C)	Difference = (A) - (B) - (C)
Billed Energy (GWh)				
2017 Test - Normalized	241.4	244.5	1.0	(4.0)

Table 24: Expected CDM Savings by Rate Class for LRAM Variance Account

Year	Residential	General Service < 50 kW	General Service 50 to 4,999 kW	Sentinel Lighting	Street Lighting
2017 LRAMVA kWh	223,186	825,045	91,672	0	0
2017 LRAMVA kW - Annual	0	0	261	0	0
2017 LRAMVA kW - Monthly	0	0	22	0	0

Table 25: Alignment of Non-normal to Weather Normal Forecast and Other Adjustments

Year	Residential	General Service < 50 kW	General Service 50 to 4,999 kW	Sentinel Lighting	Street Lighting
Non-normalized Weather Billed Energy Forecast (GWh)					
2017(Not Normalized)	151.2	34.1	58.0	0.1	0.5
Adjustment for Hydro One Load Transfer (GWh)					
2017	750533.8	161230.5	0.0	0.0	0.0
Adjustment for Weather (GWh)					
2017	(2.6)	(0.6)	(0.8)	0.0	0.0
Adjustment for CDM (GWh)					
2017	(0.2)	(0.8)	(1.1)	0.0	0.0
Weather Normalized Billed Energy Forecast (GWh)					
2017 Test - Normalized	750,682.2	161,263.2	56.1	0.1	0.5

Table 26: Historical Annual kW per Applicable Rate Class

Year	General Service 50 to 4,999 kW	Sentinel Lighting	Street Lighting	Total
Billed Annual kW				

2007	116,956	351	4,153	121,460
2008	134,693	345	4,261	139,299
2009	136,122	339	4,370	140,832
2010	144,502	324	4,389	149,215
2011	139,425	306	4,416	144,148
2012	144,982	315	4,424	149,721
2013	130,935	283	4,149	135,367
2014	135,394	300	4,581	140,275
2015	141,987	288	3,140	145,414
2016	150,802	295	1,641	152,738

Table 27: Historical kW/KWh Ratio per Applicable Rate Class

Year	General Service 50 to 4,999 kW	Sentinel Lighting	Street Lighting
Ratio of kW to kWh			
2007	0.2974%	0.2778%	0.2776%
2008	0.2975%	0.2778%	0.2778%
2009	0.2867%	0.2778%	0.2771%
2010	0.2826%	0.2778%	0.2778%
2011	0.2793%	0.2779%	0.3030%
2012	0.2835%	0.2779%	0.2818%
2013	0.2571%	0.2779%	0.2818%
2014	0.2676%	0.2778%	0.2818%
2015	0.2599%	0.2778%	0.2838%
2016	0.2601%	0.2778%	0.3059%
Average 2007 to 2016	0.2772%	0.2778%	0.2849%

Table 28: kW Forecast by Applicable Rate Class

Year	General Service 50 to 4,999 kW	Sentinel Lighting	Street Lighting	Total
Predicted Billed kW				
2017 Test - Normalized	155,585	291	1,558	157,434

Table 29: Summary of Total Forecast

	2013 Actual	2014 Actual	2015 Actual	2016 Actual
Actual kWh Purchases	251,758,061	253,254,986	255,774,983	259,382,036
Predicted kWh Purchases before CDM adjustment	250,054,817	254,540,890	255,309,255	261,375,685
% Difference between actual and predicted purchases	(0.7%)	0.5%	(0.2%)	0.8%
Loss Factor				
Total Billed Before Adjustments				
CDM Adjustment				
Total Billed After Adjustments				

Table 30: Summary of Billing Determinants and Variances of Actual and Forecast Data

	2013 Board Approved	2013 Actual	2014 Actual	2015 Actual	2016 Actual

Residential

Customers	14,189	14,181	14,509	14,862	15,202
kWh	148,148,873	148,837,682	153,331,484	151,892,216	149,508,942

Variance Analysis Compare to Board Approved

Customers		(0.06%)	2.26%	4.74%	7.14%
kWh		0.46%	3.50%	2.53%	0.92%

General Service < 50 kW

Customers	910	949	991	1,001	1,016
kWh	31,781,016	31,038,184	32,222,518	34,381,050	33,411,508

Variance Analysis Compare to Board Approved

Customers		4.31%	8.93%	9.95%	11.68%
kWh		(2.34%)	1.39%	8.18%	5.13%

General Service 50 to 4,999 kW

Customers	66	67	67	72	76
kWh	51,329,341	50,921,722	50,592,267	54,636,276	57,980,607
kW	147,666	130,935	135,394	141,987	141,987

Variance Analysis Compare to Board Approved

Customers		1.52%	1.77%	8.33%	14.52%
kWh		(0.79%)	(1.44%)	6.44%	12.96%
kW		(11.33%)	(8.31%)	(3.85%)	(3.85%)

	2013 Board Approved	2013 Actual	2014 Actual	2015 Actual	2016 Actual
--	---------------------	-------------	-------------	-------------	-------------

Sentinel Lighting

Connections	237	168	169	166	166
kWh	104,942	101,844	107,980	103,536	106,305
kW	292	283	300	288	295

Variance Analysis Compare to Board Approved

Connections		(29.11%)	(28.52%)	(30.06%)	(29.92%)
kWh		(2.95%)	2.89%	(1.34%)	1.30%
kW		(3.08%)	2.72%	(1.51%)	1.13%

Street Lighting

Connections	2,889	2,843	2,923	2,898	2,863
kWh	1,516,831	1,472,134	1,625,553	1,106,444	536,550
kW	4,432	4,149	4,581	3,140	1,641

Variance Analysis Compare to Board Approved

Connections		(1.58%)	1.19%	0.30%	(0.89%)
kWh		(2.95%)	7.17%	(27.06%)	(64.63%)
kW		(6.39%)	3.37%	(29.16%)	(62.97%)

Unmetered Scattered Load

Connections	78	78	76	76	75
kWh	474,652	474,344	467,562	467,455	472,406

Variance Analysis Compare to Board Approved

Connections		(0.53%)	(3.10%)	(2.56%)	(3.42%)
kWh		(0.06%)	(1.49%)	(1.52%)	(0.47%)

Total

Customer/Connections	18,369	18,286	18,736	19,073	19,398
kWh	233,355,655	232,845,910	238,347,364	242,586,977	242,016,318
kW from applicable classes	152,390	135,367	140,275	145,414	143,923
Variance Analysis Compare to Board Approved					
Customer/Connections		(0.45%)	2.00%	3.83%	5.60%
kWh		(0.22%)	2.14%	3.96%	3.71%
kW from applicable classes		(11.17%)	(7.95%)	(4.58%)	(5.56%)

Table 32 Billing Determinants - 2013 Actual vs 2013 Board Approved

Billing Determinants	Customer/Connections			kWh	
	2013 Board Approved	2013 Actual	Difference	2013 Board Approved	2013 Actual
Residential	14,189	14,181	(8)	148,148,873	148,837,682
General Service < 50 kW	910	949	39	31,781,016	31,038,184
General Service 50 to 4,999 kW	66	67	1	51,329,341	50,921,722
Sentinel Lighting	237	168	(69)	104,942	101,844
Street Lighting	2,889	2,843	(46)	1,516,831	1,472,134
Unmetered Scattered Load	78	78	(0)	474,652	474,344
Total	18,369	18,286	-83	233,355,655	232,845,910

Table 34 Billing Determinants - 2014 Actual vs 2013 Actual

Billing Determinants	Customer/Connections			kWh	
	2013 Actual	2014 Actual	Difference	2013 Actual	2014 Actual
Residential	14,181	14,509	328	148,837,682	153,331,484
General Service < 50 kW	949	991	42	31,038,184	32,222,518
General Service 50 to 4,999 kW	67	67	0	50,921,722	50,592,267
Sentinel Lighting	168	169	1	101,844	107,980
Street Lighting	2,843	2,923	80	1,472,134	1,625,553
Unmetered Scattered Load	78	76	(2)	474,344	467,562
Total	18,286	18,736	450	232,845,910	238,347,364

Table 36 Billing Determinants - 2015 Actual vs 2014 Actual

Billing Determinants	Customer/Connections			kWh	
	2014 Actual	2015 Actual	Difference	2014 Actual	2015 Actual
Residential	14,509	14,862	352	153,331,484	151,892,216
General Service < 50 kW	991	1,001	9	32,222,518	34,381,050
General Service 50 to 4,999 kW	67	72	4	50,592,267	54,636,276
Sentinel Lighting	169	166	(4)	107,980	103,536
Street Lighting	2,923	2,898	(26)	1,625,553	1,106,444
Unmetered Scattered Load	76	76	0	467,562	467,455
Total	18,736	19,073	337	238,347,364	242,586,977

Table 38 Billing Determinants - 2016 Actual vs 2015 Actual

Billing Determinants	Customer/Connections			kWh	
	2015 Actual	2016 Actual	Difference	2015 Actual	2016 Actual
Residential	14,862	15,202	340	151,892,216	149,508,942
General Service < 50 kW	1,001	1,016	16	34,381,050	33,411,508

General Service 50 to 4,999 kW	72	76	4	54,636,276	57,980,607
Sentinel Lighting	166	166	0	103,536	106,305
Street Lighting	2,898	2,863	(35)	1,106,444	536,550
Unmetered Scattered Load	76	75	(1)	467,455	472,406
Total	19,073	19,398	325	242,586,977	242,016,318

Table 40 Billing Determinants - 2017 Test vs 2016 Actual

Billing Determinants	Customer/Connections			kWh	
	2016 Actual	2017 Test	Difference	2016 Actual	2017 Test
Residential	15,202	15,459	258	149,508,942	149,174,008
General Service < 50 kW	1,016	1,042	26	33,411,508	32,869,504
General Service 50 to 4,999 kW	76	76	0	57,980,607	56,130,544
Sentinel Lighting	166	164	(2)	106,305	104,785
Street Lighting	2,863	2,918	55	536,550	546,843
Unmetered Scattered Load	75	74	(1)	472,406	463,258
Total	19,398	19,733	335	242,016,318	239,288,942

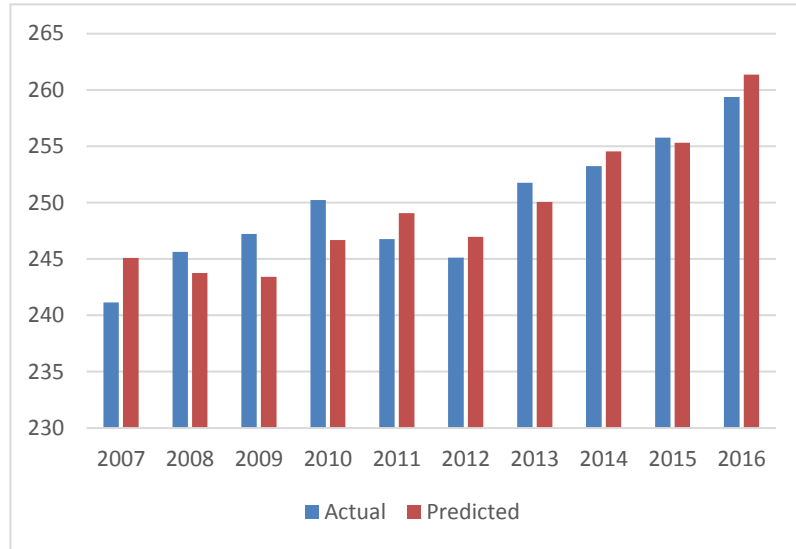
Percent Change (%)
2.4%
1.9%
1.1%
1.3%
0.7%
2.1%
2.5%
1.8%
1.7%
1.7%

Unmetered Scattered Load	Total
0.5	233.4
0.5	219.6
0.5	226.8
0.5	229.1
0.5	231.9
0.5	233.6
0.5	230.0
0.5	232.8
0.5	238.3
0.5	242.6
0.5	242.0
0.5	239.3

Unmetered Scattered Load	Total
78	18,369
89	16,645
84	17,044
83	17,361
82	17,552
81	17,776
79	17,903
78	18,286
76	18,736
76	19,073
75	19,398
74	19,733

Unmetered Scattered Load
6,085
5,882
6,097
5,991
6,064
6,085
6,125
6,114
6,186
6,151
6,271
6,272

Actual	Predicted
241	245
246	244
247	243
250	247
247	249
245	247
252	250
253	255
256	255
259	261



Unmetered Scattered Load	Total
89	16,645
84	17,044
83	17,361
82	17,552
81	17,776
79	17,903
78	18,286
76	18,736
76	19,073
75	19,398

Unmetered Scattered Load
(5.6%)
(1.2%)
(1.2%)

(1.2%)
(2.9%)
(1.4%)
(2.6%)
0.6%
(0.9%)
(2.0%)

Unmetered Scattered Load	Total
74	19,733

Unmetered Scattered Load
5,839
6,050
5,948
6,020
6,041
6,080
6,068
6,129
6,093
6,213

Unmetered Scattered Load
3.6%
(1.7%)
1.2%
0.3%
0.7%
(0.2%)
1.0%
(0.6%)
2.0%
0.7%

Unmetered Scattered Load

6,213

Unmetered Scattered Load	TOTAL
0.459	244.5

Unmetered Scattered Load
0%

2016-2017 Expected kWh Saving	
	2016
2016 Programs	3,143,714
2017 Programs	
Target Credit	3,143,714
Total Including Persistence	3,143,714

	2016
Residential Allocation	23.0%

2016-2017 Expected Residential kW kWh	
	2016

2016 Programs	253,000
2017 Programs	
Target Credit	253,000
Total Including Persistence	253,000

2016-2017 Expected General Service < 50 kW	
	2016
2016 Programs	763,843
2017 Programs	
Target Credit	763,843
Total Including Persistence	763,843

2016-2017 Expected General Service 50 to 4,999	
	2016
2016 Programs	2,126,871
2017 Programs	
Target Credit	2,126,871
Total Including Persistence	2,126,871

Unmetered Scattered Load	Total
0	1,139,903
0	261
0	22

Unmetered Scattered Load	Total
0.5	244.5
4170.802	915,935.1
0.0	(4.0)
0.0	(2.1)
4,171.3	916173.5

2017 Weather Normal

--

259,085,636

--

--

1.0731

--

241,430,751

2,141,809

239,288,942

2017 Weather Normal

15,459
149,174,008
8.95%
0.69%
1,042
32,869,504
14.51%
3.42%
76
56,130,544
155,585
14.62%
9.35%
5.36%
2017 Weather Normal
164
104,785
291
(30.93%)
(0.15%)
(0.31%)
2,918
546,843
1,558
1.01%
(63.95%)
(64.85%)
74
463,258
(5.31%)
(2.40%)

19,733
239,288,942
157,434
7.42%
2.54%
3.31%

kW		
2013 Board Approved	2013 Actual	Volumetric Difference
		688,809
		(742,832)
147,666	130,935	(16,731)
292	283	(9)
4,432	4,149	(283)
		(308)
152,390	135,367	-71,354

kW		
2013 Actual	2014 Actual	Volumetric Difference
		4,493,802
		1,184,334
130,935	135,394	4,459
283	300	17
4,149	4,581	432
		(6,782)
135,367	140,275	5,676,262

kW		
2014 Actual	2015 Actual	Volumetric Difference
		(1,439,268)
		2,158,532
135,394	141,987	6,593
300	288	(12)
4,581	3,140	(1,442)
		(107)
140,275	145,414	724,296

kW		
2015 Actual	2016 Actual	Volumetric Difference
		(2,383,274)
		(969,542)

141,987	141,987	0
295	295	0
3,140	1,641	(1,498)
		4,951
145,422	143,923	-3,349,364

kW		Volumetric Difference
2016 Actual	2017 Test	
		(334,934)
		(542,004)
141,987	155,585	13,599
295	291	(4)
1,641	1,558	(84)
		(9,148)
143,923	157,434	-872,574

S
2017
3,143,714
1,139,903
1,139,903
4,283,617

2017
19.6%

Savings
2017

253,000
223,186
223,186
476,186

kWh Savings
2017
763,843
825,045
825,045
1,588,888

kW kWh Savings
2017
2,126,871
91,672
91,672
2,218,543

InnPower Forecast for 2017 EB-2016-0086 Rate Application

	Purchased	Heating Degree Days	Cooling Degree Days	Number of Days in Month	Spring Fall Flag	Number of Customers - 3 Main Classes	Predicted Purchases
Jan-07	24,279,310	647.1	0.0	31	0	13,849	24,401,062
Feb-07	23,881,688	740.1	0.0	28	0	13,861	23,671,088
Mar-07	22,297,190	546.7	0.0	31	1	13,865	22,164,329
Apr-07	18,569,417	356.4	0.0	30	1	13,869	19,056,597
May-07	16,382,762	136.4	22.4	31	1	13,873	17,599,889
Jun-07	17,880,105	16.5	99.2	30	0	13,881	18,895,511
Jul-07	18,476,520	3.2	106.1	31	0	13,905	19,610,918
Aug-07	19,239,334	5.2	141.0	31	0	13,925	20,803,429
Sep-07	16,489,843	36.9	47.5	30	1	13,949	16,536,012
Oct-07	17,241,375	137.7	19.8	31	1	13,987	17,589,031
Nov-07	20,822,608	462.5	0.0	30	1	14,001	20,497,602
Dec-07	25,594,484	630.7	0.0	31	0	14,035	24,284,175
Jan-08	25,337,708	623.5	0.0	31	0	14,052	24,199,700
Feb-08	23,919,251	674.7	0.0	29	0	14,069	23,577,876
Mar-08	23,324,392	610.2	0.0	31	1	14,091	23,102,145
Apr-08	17,845,473	253.9	0.0	30	1	14,109	17,852,963
May-08	17,203,595	193.5	2.5	31	1	14,151	17,822,172
Jun-08	17,657,148	22.7	71.5	30	0	14,186	18,214,371
Jul-08	19,399,006	1.0	111.0	31	0	14,218	19,905,315
Aug-08	18,496,935	12.7	64.0	31	0	14,260	18,521,008
Sep-08	16,944,225	59.0	26.7	30	1	14,297	16,311,349
Oct-08	18,736,114	278.6	0.0	31	1	14,327	18,936,221
Nov-08	20,914,296	451.6	0.0	30	1	14,348	20,534,471
Dec-08	25,844,885	654.6	0.0	31	0	14,388	24,774,557
Jan-09	27,698,758	830.2	0.0	31	0	14,411	27,059,239
Feb-09	22,854,687	606.4	0.0	28	0	14,426	22,230,287
Mar-09	22,750,704	533.8	0.0	31	1	14,438	22,291,212
Apr-09	18,949,042	305.8	1.2	30	1	14,448	18,738,345
May-09	17,348,781	158.8	6.9	31	1	14,455	17,674,721
Jun-09	17,392,957	49.3	34.2	30	0	14,460	17,463,298
Jul-09	18,006,297	6.2	43.7	31	0	14,710	17,995,036
Aug-09	20,135,392	9.8	91.0	31	0	14,976	19,745,272
Sep-09	17,368,091	55.2	20.9	30	1	15,073	16,467,948
Oct-09	19,458,169	287.8	0.0	31	1	15,110	19,451,723
Nov-09	19,998,430	361.2	0.0	30	1	15,107	19,753,615
Dec-09	25,277,881	631.3	0.0	31	0	14,563	24,562,718
Jan-10	26,451,956	720.0	0.0	31	0	14,554	25,706,195
Feb-10	22,355,018	598.3	0.0	28	0	14,553	22,190,574
Mar-10	21,335,193	422.8	0.0	31	1	14,566	20,920,121
Apr-10	17,366,211	225.1	0.0	30	1	14,576	17,719,683
May-10	18,594,842	107.9	45.7	31	1	14,570	18,360,460
Jun-10	18,232,281	21.7	58.7	30	0	14,584	17,981,424
Jul-10	22,225,962	1.8	164.9	31	0	14,599	21,896,968
Aug-10	21,301,865	2.1	138.8	31	0	14,633	21,053,497
Sep-10	17,785,838	78.1	31.5	30	1	14,646	16,896,592
Oct-10	18,734,173	241.6	0.0	31	1	14,664	18,625,007
Nov-10	20,451,455	405.3	0.0	30	1	14,688	20,109,548
Dec-10	25,404,585	676.2	0.0	31	0	14,707	25,217,732
Jan-11	26,274,474	775.3	0.0	31	0	14,713	26,503,514
Feb-11	22,971,970	654.2	0.0	28	0	14,716	22,997,711
Mar-11	22,951,605	572.8	0.0	31	1	14,728	22,944,732
Apr-11	18,914,567	332.3	0.0	30	1	14,729	19,185,695
May-11	17,615,740	134.1	13.0	31	1	14,733	17,699,700
Jun-11	17,571,916	19.0	52.2	30	0	14,742	17,812,135
Jul-11	22,292,830	0.0	198.5	31	0	14,759	23,069,017
Aug-11	19,354,570	0.0	122.2	31	0	14,772	20,547,580
Sep-11	17,323,768	48.2	39.7	30	1	14,772	16,845,894
Oct-11	18,576,164	235.5	2.4	31	1	14,794	18,692,241
Nov-11	19,598,868	342.1	0.0	30	1	14,809	19,353,569
Dec-11	23,311,694	534.0	0.0	31	0	14,818	23,433,827
Jan-12	24,487,281	611.1	0.0	31	0	14,826	24,436,134
Feb-12	21,711,327	531.7	0.0	29	0	14,835	22,119,779
Mar-12	20,140,444	349.4	0.2	31	1	14,856	20,125,413
Apr-12	18,335,839	321.7	0.0	30	1	14,867	19,119,265
May-12	17,673,429	80.7	36.7	31	1	14,877	17,867,632
Jun-12	19,474,755	23.2	101.6	30	0	14,882	19,575,101
Jul-12	22,780,193	0.0	195.4	31	0	14,921	23,049,382
Aug-12	20,627,757	2.0	112.1	31	0	14,953	20,331,639
Sep-12	17,795,946	85.0	35.6	30	1	14,968	17,286,884
Oct-12	17,475,407	242.5	1.1	31	1	15,012	18,851,570
Nov-12	20,981,769	434.0	0.0	30	1	15,036	20,659,495
Dec-12	23,645,692	533.5	0.0	31	0	15,062	23,552,743
Jan-13	24,666,681	624.4	0.0	31	0	15,076	24,736,492
Feb-13	22,513,100	631.5	0.0	28	0	15,088	22,894,667
Mar-13	22,356,782	554.8	0.0	31	1	15,100	22,902,523
Apr-13	19,424,577	358.6	0.0	30	1	15,107	19,719,962
May-13	17,840,113	109.1	23.1	31	1	15,139	17,918,972
Jun-13	18,666,407	33.0	59.6	30	0	15,172	18,459,053
Jul-13	22,033,173	1.3	120.8	31	0	15,207	20,741,102
Aug-13	20,162,331	4.4	93.8	31	0	15,244	19,905,591
Sep-13	17,834,215	83.0	28.1	30	1	15,260	17,162,241
Oct-13	19,036,509	208.5	0.4	31	1	15,288	18,529,838
Nov-13	21,552,245	478.2	0.0	30	1	15,334	21,384,424
Dec-13	25,671,929	687.9	0.0	31	0	15,352	25,699,950
Jan-14	27,344,318	825.9	0.0	31	0	15,406	27,513,853

Variance (kWh)	% Variance
121,753	0.5%
(210,600)	0.9%
(132,861)	0.6%
487,180	2.6%
1,217,126	7.4%
1,015,405	5.7%
1,134,398	6.1%
1,564,096	8.1%
46,169	0.3%
347,656	2.0%
(325,007)	1.6%
(1,310,309)	5.1%
(1,138,008)	4.5%
(341,376)	1.4%
(222,247)	1.0%
7,491	0.0%
618,578	3.6%
557,223	3.2%
506,309	2.6%
24,073	0.1%
(632,876)	3.7%
200,107	1.1%
(379,825)	1.8%
(1,070,329)	4.1%
(639,519)	2.3%
(624,400)	2.7%
(459,492)	2.0%
(210,697)	1.1%
325,940	1.9%
70,340	0.4%
(11,262)	0.1%
(390,120)	1.9%
(900,144)	5.2%
(6,446)	0.0%
(244,814)	1.2%
(715,163)	2.8%
(745,760)	2.8%
(164,444)	0.7%
(415,072)	1.9%
353,472	2.0%
(234,382)	1.3%
(250,858)	1.4%
(328,993)	1.5%
(248,368)	1.2%
(889,245)	5.0%
(109,166)	0.6%
(341,907)	1.7%
(186,853)	0.7%
229,040	0.9%
25,741	0.1%
(6,873)	0.0%
271,129	1.4%
83,960	0.5%
240,218	1.4%
776,187	3.5%
1,193,010	6.2%
(477,874)	2.8%
116,077	0.6%
(245,299)	1.3%
122,133	0.5%
(51,147)	0.2%
408,453	1.9%
(15,031)	0.1%
783,426	4.3%
194,203	1.1%
100,346	0.5%
269,189	1.2%
(296,118)	1.4%
(509,062)	2.9%
1,376,163	7.9%
(322,275)	1.5%
(92,949)	0.4%
69,811	0.3%
381,567	1.7%
545,741	2.4%
295,386	1.5%
78,860	0.4%
(207,354)	1.1%
(1,292,071)	5.9%
(256,740)	1.3%
(671,974)	3.8%
(506,671)	2.7%
(167,820)	0.8%
28,021	0.1%
169,534	0.6%

(Abs)	% Variance
121,753	0.5%
(210,600)	0.9%
(132,861)	0.6%
487,180	2.6%
1,217,126	7.4%
1,015,405	5.7%
1,134,398	6.1%
1,564,096	8.1%
46,169	0.3%
347,656	2.0%
(325,007)	1.6%
(1,310,309)	5.1%
(1,138,008)	4.5%
(341,376)	1.4%
(222,247)	1.0%
7,491	0.0%
618,578	3.6%
557,223	3.2%
506,309	2.6%
24,073	0.1%
(632,876)	3.7%
200,107	1.1%
(379,825)	1.8%
(1,070,329)	4.1%
(639,519)	2.3%
(624,400)	2.7%
(459,492)	2.0%
(210,697)	1.1%
325,940	1.9%
70,340	0.4%
(11,262)	0.1%
(390,120)	1.9%
(900,144)	5.2%
(6,446)	0.0%
(244,814)	1.2%
(715,163)	2.8%
(745,760)	2.8%
(164,444)	0.7%
(415,072)	1.9%
353,472	2.0%
(234,382)	1.3%
(250,858)	1.4%
(328,993)	1.5%
(248,368)	1.2%
(889,245)	5.0%
(109,166)	0.6%
(341,907)	1.7%
(186,853)	0.7%
229,040	0.9%
25,741	0.1%
(6,873)	0.0%
271,129	1.4%
83,960	0.5%
240,218	1.4%
776,187	3.5%
1,193,010	6.2%
(477,874)	2.8%
116,077	0.6%
(245,299)	1.3%
122,133	0.5%
(51,147)	0.2%
408,453	1.9%
(15,031)	0.1%
783,426	4.3%
194,203	1.1%
100,346	0.5%
269,189	1.2%
(296,118)	1.4%
(509,062)	2.9%
1,376,163	7.9%
(322,275)	1.5%
(92,949)	0.4%
69,811	0.3%
381,567	1.7%
545,741	2.4%
295,386	1.5%
78,860	0.4%
(207,354)	1.1%
(1,292,071)	5.9%
(256,740)	1.3%
(671,974)	3.8%
(506,671)	2.7%
(167,820)	0.8%
28,021	0.1%
169,534	0.6%

SUMMARY OUTPUT						
Regression Statistics						
Multiple R						98%
R Square						96%
Adjusted R Square						96%
Standard Error						573,028
Observations						120
ANOVA						
	df	SS	MS	F	Significance F	
Regression	5	9.28888E+14	1.85778E+14	565.7725376	1.053	

Feb-14	23,698,938	737.1	0.0	28	0	15,425	24,434,331	735,393	3.1%
Mar-14	24,427,815	690.6	0.0	31	1	15,444	24,836,672	408,858	1.7%
Apr-14	19,352,181	356.9	0.0	30	1	15,478	19,888,220	536,039	2.8%
May-14	17,549,445	132.1	11.9	31	1	15,497	18,029,171	479,726	2.7%
Jun-14	18,258,424	14.1	68.1	30	0	15,515	18,671,959	413,535	2.3%
Jul-14	19,452,973	4.0	71.0	31	0	15,587	19,320,867	(132,106)	0.7%
Aug-14	19,828,414	8.8	81.8	31	0	15,628	19,761,867	(66,547)	0.3%
Sep-14	17,976,814	69.7	30.1	30	1	15,648	17,255,340	(721,474)	4.0%
Oct-14	19,058,731	224.3	1.3	31	1	15,688	18,969,300	(89,431)	0.5%
Nov-14	22,053,999	482.1	0.0	30	1	15,720	21,632,858	(421,140)	1.9%
Dec-14	24,252,934	557.3	0.0	31	0	15,775	24,226,451	(26,483)	0.1%
Jan-15	26,957,598	792.4	0.0	31	0	15,793	27,278,711	321,113	1.2%
Feb-15	25,654,360	856.8	0.0	28	0	15,802	26,177,013	522,653	2.0%
Mar-15	23,473,380	615.5	0.0	31	1	15,826	24,060,515	587,134	2.5%
Apr-15	18,844,477	313.7	0.0	30	1	15,843	19,516,243	671,767	3.6%
May-15	18,113,892	89.3	34.1	31	1	15,856	18,394,864	280,972	1.6%
Jun-15	18,210,409	33.8	32.3	30	0	15,883	17,929,482	(280,926)	1.5%
Jul-15	21,783,994	4.0	114.3	31	0	15,881	20,906,331	(877,662)	4.0%
Aug-15	20,815,474	4.4	88.6	31	0	15,970	20,105,614	(709,860)	3.4%
Sep-15	19,854,447	31.1	81.9	30	1	16,005	18,655,128	(1,199,319)	6.0%
Oct-15	19,438,982	249.8	0.0	31	1	16,050	19,441,933	2,952	0.0%
Nov-15	20,136,180	345.0	0.0	30	1	16,127	20,067,021	(69,159)	0.3%
Dec-15	22,491,790	429.7	0.0	31	0	16,168	22,776,398	284,608	1.3%
Jan-16	25,159,552	670.4	0.0	31	0	16,197	25,906,783	747,231	3.0%
Feb-16	23,014,941	588.4	0.0	29	0	16,212	23,559,852	544,911	2.4%
Mar-16	21,970,551	476.1	0.0	31	1	16,243	22,470,036	499,485	2.3%
Apr-16	19,763,963	394.8	0.0	30	1	16,249	20,774,176	1,010,213	5.1%
May-16	18,836,973	142.5	36.9	31	1	16,261	19,383,933	546,960	2.9%
Jun-16	19,211,234	24.2	83.7	30	0	16,269	19,706,253	495,019	2.6%
Jul-16	23,404,500	0.0	176.9	31	0	16,281	23,133,863	(270,637)	1.2%
Aug-16	24,564,804	0.0	195.4	31	0	16,292	23,752,478	(612,326)	3.3%
Sep-16	19,239,594	25.9	69.4	30	1	16,323	18,336,732	(902,862)	4.7%
Oct-16	19,360,398	194.2	4.1	31	1	16,370	19,022,227	(338,171)	1.7%
Nov-16	20,317,470	337.8	0.0	30	1	16,399	20,113,319	(204,151)	1.0%
Dec-16	24,538,056	608.0	0.0	31	0	16,425	25,216,032	677,976	2.8%
Jan-17		712.0	0.0	31	0	16,448	26,574,542		2.1%
Feb-17		661.9	0.0	28	0	16,472	23,998,055		
Mar-17		537.3	0.0	31	1	16,495	23,391,769		
Apr-17		321.9	0.1	30	1	16,519	19,973,055		
May-17		128.4	23.3	31	1	16,542	18,896,058		
Jun-17		25.8	66.1	30	0	16,565	19,295,450		
Jul-17		2.2	130.3	31	0	16,589	21,774,130		
Aug-17		4.9	112.9	31	0	16,612	21,246,039		
Sep-17		57.2	41.1	30	1	16,635	17,965,876		
Oct-17		230.1	2.9	31	1	16,659	19,594,955		
Nov-17		410.0	0.0	30	1	16,682	21,192,835		
Dec-17		594.3	0.0	31	0	16,706	25,182,873		

Weather Normal 2,755,399,940

			Weather Normal	Weather Normal	Weather Noraml Factor
2007	241,154,636		245,109,643	242,713,895	0.990
2008	245,623,028		243,752,148	245,158,521	1.006
2009	247,239,189		243,433,415	247,420,181	1.016
2010	250,239,379		246,677,801	246,990,938	1.001
2011	246,768,167		249,085,615	247,885,579	0.995
2012	245,129,838		246,975,037	249,563,259	1.010
2013	251,758,061		250,054,817	250,594,629	1.002
2014	253,254,986		254,540,890	252,873,667	0.993
2015	255,774,983		255,309,255	255,126,551	0.999
2016	259,382,036		261,375,685	257,987,085	0.987
2017			259,085,636	259,085,636	1.000
Total to 2015	2,496,314,304		2,496,314,304	0.0	
			2,755,399,940	0.0	

20 Year Trend						
Jan-17	717.8	0.0	31	0	16,448	26,649,294
Feb-17	697.2	0.0	28	0	16,472	24,455,023
Mar-17	541.9	0.0	31	1	16,495	23,452,466
Apr-17	331.8	-0.1	30	1	16,519	20,093,201
May-17	116.4	28.3	31	1	16,542	18,905,252
Jun-17	22.5	63.3	30	0	16,565	19,161,521
Jul-17	0.0	141.7	31	0	16,589	22,124,130
Aug-17	0.0	123.4	31	0	16,612	21,531,728
Sep-17	52.6	46.8	30	1	16,635	18,094,340
Oct-17	225.0	2.3	31	1	16,659	19,509,722
Nov-17	400.4	0.0	30	1	16,682	21,068,502
Dec-17	576.0	0.0	31	0	16,706	24,946,245

259,991,426.1

InnPower Forecast for 2017 EB-2016-0086 Rate Application

	Purchased	Heating			Cooling Degree		Number of		Spring Fall	Number of	Predicted	Variance (kWh)	% Variance
		Days	Days	Days	Days in	Month	Flag	Customers - 3					
Jan-07	24,279,310	712.0	0.0	31	0					13,849	25,241,487		
Feb-07	23,881,688	661.9	0.0	28	0					13,861	22,659,161		
Mar-07	22,297,190	537.3	0.0	31	1					13,865	22,042,934		
Apr-07	18,569,417	321.9	0.1	30	1					13,869	18,614,279		
May-07	16,382,762	128.4	23.3	31	1					13,873	17,527,341		
Jun-07	17,880,105	25.8	66.1	30	0					13,881	17,918,843		
Jul-07	18,476,520	2.2	130.3	31	0					13,905	20,397,839		
Aug-07	19,239,334	4.9	112.9	31	0					13,925	19,868,012		
Sep-07	16,489,843	57.2	41.1	30	1					13,949	16,588,165		
Oct-07	17,241,375	230.1	2.9	31	1					13,987	18,224,739		
Nov-07	20,822,608	410.0	0.0	30	1					14,001	19,817,806		
Dec-07	25,594,484	594.3	0.0	31	0					14,035	23,813,289		
Jan-08	25,337,708	712.0	0.0	31	0					14,052	25,345,592		
Feb-08	23,919,251	661.9	0.0	29	0					14,069	23,412,457		
Mar-08	23,324,392	537.3	0.0	31	1					14,091	22,158,835		
Apr-08	17,845,473	321.9	0.1	30	1					14,109	18,737,360		
May-08	17,203,595	128.4	23.3	31	1					14,151	17,669,909		
Jun-08	17,657,148	25.8	66.1	30	0					14,186	18,075,258		
Jul-08	19,399,006	2.2	130.3	31	0					14,218	20,558,356		
Aug-08	18,496,935	4.9	112.9	31	0					14,260	20,039,812		
Sep-08	16,944,225	57.2	41.1	30	1					14,297	16,766,631		
Oct-08	18,736,114	230.1	2.9	31	1					14,337	18,404,231		
Nov-08	20,914,296	410.0	0.0	30	1					14,348	19,995,760		
Dec-08	25,844,885	594.3	0.0	31	0					14,388	23,994,319		
Jan-09	27,698,758	712.0	0.0	31	0					14,411	25,529,700		
Feb-09	22,854,687	661.9	0.0	28	0					14,426	22,948,913		
Mar-09	22,750,704	537.3	0.0	31	1					14,438	22,336,789		
Apr-09	18,949,042	321.9	0.1	30	1					14,448	18,911,211		
May-09	17,348,781	128.4	23.3	31	1					14,455	17,825,811		
Jun-09	17,392,957	25.8	66.1	30	0					14,460	18,215,774		
Jul-09	18,006,297	2.2	130.3	31	0					14,710	20,810,671		
Aug-09	20,135,392	4.9	112.9	31	0					14,976	20,407,002		
Sep-09	17,368,091	57.2	41.1	30	1					15,073	17,164,591		
Oct-09	19,458,169	230.1	2.9	31	1					15,110	18,800,653		
Nov-09	19,998,430	410.0	0.0	30	1					15,107	20,385,002		
Dec-09	25,277,881	594.3	0.0	31	0					14,563	24,084,066		
Jan-10	26,451,956	712.0	0.0	31	0					14,554	25,603,035		
Feb-10	22,355,018	661.9	0.0	28	0					14,553	23,014,043		
Mar-10	21,335,193	537.3	0.0	31	1					14,566	22,402,431		
Apr-10	17,366,211	321.9	0.1	30	1					14,576	18,976,854		
May-10	18,594,842	128.4	23.3	31	1					14,570	17,884,787		
Jun-10	18,232,281	25.8	66.1	30	0					14,584	18,279,366		
Jul-10	22,225,962	2.2	130.3	31	0					14,599	20,753,746		
Aug-10	21,301,865	4.9	112.9	31	0					14,633	20,231,099		
Sep-10	17,785,838	57.2	41.1	30	1					14,646	16,945,611		
Oct-10	18,734,173	230.1	2.9	31	1					14,664	18,571,928		
Nov-10	20,451,455	410.0	0.0	30	1					14,688	20,170,124		
Dec-10	25,404,585	594.3	0.0	31	0					14,707	24,157,914		
Jan-11	26,274,474	712.0	0.0	31	0					14,713	25,684,576		
Feb-11	22,971,970	661.9	0.0	28	0					14,716	23,097,635		
Mar-11	22,951,605	537.3	0.0	31	1					14,728	22,485,511		
Apr-11	18,914,567	321.9	0.1	30	1					14,729	19,055,317		
May-11	17,615,740	128.4	23.3	31	1					14,733	17,968,379		
Jun-11	17,571,916	25.8	66.1	30	0					14,742	18,360,394		
Jul-11	22,292,830	2.2	130.3	31	0					14,759	20,835,800		
Aug-11	19,354,570	4.9	112.9	31	0					14,772	20,302,383		
Sep-11	17,323,768	57.2	41.1	30	1					14,772	17,010,228		
Oct-11	18,576,164	230.1	2.9	31	1					14,794	18,638,597		
Nov-11	19,598,868	410.0	0.0	30	1					14,809	20,232,177		
Dec-11	23,311,694	594.3	0.0	31	0					14,818	24,214,582		
Jan-12	24,487,281	712.0	0.0	31	0					14,826	25,742,526		
Feb-12	21,711,327	661.9	0.0	29	0					14,835	23,805,289		
Mar-12	20,140,444	537.3	0.0	31	1					14,856	22,551,154		
Apr-12	18,335,839	321.9	0.1	30	1					14,867	19,126,088		
May-12	17,673,429	128.4	23.3	31	1					14,877	18,042,227		
Jun-12	19,474,755	25.8	66.1	30	0					14,882	18,432,191		
Jul-12	22,780,193	2.2	130.3	31	0					14,921	20,918,879		
Aug-12	20,627,757	4.9	112.9	31	0					14,953	20,395,206		
Sep-12	17,795,946	57.2	41.1	30	1					14,968	17,110,743		
Oct-12	17,475,407	230.1	2.9	31	1					15,012	18,750,395		
Nov-12	20,981,769	410.0	0.0	30	1					15,036	20,348,591		
Dec-12	23,645,692	594.3	0.0	31	0					15,062	24,339,970		
Jan-13	24,666,681	712.0	0.0	31	0					15,076	25,870,735		
Feb-13	22,513,100	661.9	0.0	28	0					15,088	23,288,410		
Mar-13	22,356,782	537.3	0.0	31	1					15,100	22,676,285		
Apr-13	19,424,577	321.9	0.1	30	1					15,107	19,249,169		
May-13	17,840,113	128.4	23.3	31	1					15,139	18,176,590		
Jun-13	18,666,407	25.8	66.1	30	0					15,172	18,580,913		
Jul-13	22,033,173	2.2	130.3	31	0					15,207	21,065,550		
Aug-13	20,162,331	4.9	112.9	31	0					15,244	20,544,441		
Sep-13	17,834,215	57.2	41.1	30	1					15,260	17,260,491		
Oct-13	19,036,509	230.1	2.9	31	1					15,288	18,891,937		
Nov-13	21,552,245	410.0	0.0	30	1					15,334	20,501,415		
Dec-13	25,671,929	594.3	0.0	31	0					15,352	24,488,692		
Jan-14	27,344,318	712.0	0.0	31	0					15,406	26,039,971		

SUMMARY OUTPUT

Regression Statistics					
Multiple R					98%
R Square					96%
Adjusted R Square					96%
Standard Error				573,028	
Observations				120	

ANOVA					
	df	SS	MS	F	Significance F
Regression	5	9.28888E+14	1.85778E+14	565.7725376	1.05366E-78
Residual	114	3.74332E+13	3.28361E+11		
Total	119	9.66321E+14			

	Coefficients	Standard Error	t Stat	P-value	Lower 95%	Upper 95%
Intercept	(11,122,367)	2,305,922	(4.82)	4.40416E-06	(15,690,381)	(6,584,352)
Heating Degree Days	12,944	335	38.67	2.26845E-67	12,280	13,607
Cooling Degree Days	33,134	1,978	16.75	1.62722E-32	29,215	37,053
Number of Days in Month	646,626	67,736	9.55	3.17616E-16	512,442	780,810
Spring Fall Flag	(945,406)	141,922	(6.66)	1.00257E-09	(1,226,552)	(664,260)
Number of Customers - 3 Main Classes	513	73	7.03	1.81923E-10	368	657

Feb-14	23,698,938	661.9	0.0	28	0	15,425	23,461,235
Mar-14	24,427,815	537.3	0.0	31	1	15,444	22,852,700
Apr-14	19,352,181	321.9	0.1	30	1	15,478	19,439,431
May-14	17,549,445	128.4	23.3	31	1	15,497	18,360,185
Jun-14	18,258,424	25.8	66.1	30	0	15,515	18,756,815
Jul-14	19,452,973	2.2	130.3	31	0	15,587	21,260,427
Aug-14	19,628,414	4.9	112.9	31	0	15,628	20,741,370
Sep-14	17,976,814	57.2	41.1	30	1	15,648	17,459,471
Oct-14	19,058,731	230.1	2.9	31	1	15,688	19,097,071
Nov-14	22,053,999	410.0	0.0	30	1	15,720	20,699,370
Dec-14	24,252,934	594.3	0.0	31	0	15,775	24,705,621
Jan-15	26,957,598	712.0	0.0	31	0	15,793	26,238,438
Feb-15	25,654,360	661.9	0.0	28	0	15,802	23,654,574
Mar-15	23,473,380	537.3	0.0	31	1	15,826	23,048,603
Apr-15	18,844,477	321.9	0.1	30	1	15,843	19,626,615
May-15	18,113,892	128.4	23.3	31	1	15,856	18,544,293
Jun-15	18,210,409	25.8	66.1	30	0	15,883	18,945,538
Jul-15	21,783,994	2.2	130.3	31	0	15,881	21,411,200
Aug-15	20,815,474	4.9	112.9	31	0	15,970	20,916,759
Sep-15	19,854,447	57.2	41.1	30	1	16,005	17,642,553
Oct-15	19,438,982	230.1	2.9	31	1	16,050	19,282,717
Nov-15	20,136,180	410.0	0.0	30	1	16,127	20,908,093
Dec-15	22,491,790	594.3	0.0	31	0	16,168	24,907,165
Jan-16	25,159,552	712.0	0.0	31	0	16,197	26,445,623
Feb-16	23,014,941	661.9	0.0	29	0	16,212	24,511,462
Mar-16	21,970,551	537.3	0.0	31	1	16,243	23,262,455
Apr-16	19,763,963	321.9	0.1	30	1	16,249	19,834,826
May-16	18,836,973	128.4	23.3	31	1	16,261	18,751,991
Jun-16	19,211,234	25.8	66.1	30	0	16,269	19,143,493
Jul-16	23,404,500	2.2	130.3	31	0	16,281	21,616,334
Aug-16	24,564,804	4.9	112.9	31	0	16,292	21,081,892
Sep-16	19,239,594	57.2	41.1	30	1	16,323	17,805,635
Oct-16	19,360,398	230.1	2.9	31	1	16,370	19,446,824
Nov-16	20,317,470	410.0	0.0	30	1	16,399	21,047,584
Dec-16	24,538,056	594.3	0.0	31	0	16,425	25,038,964
Jan-17		712.0	0.0	31	0	16,448	26,574,542
Feb-17		661.9	0.0	28	0	16,472	23,998,055
Mar-17		537.3	0.0	31	1	16,495	23,391,769
Apr-17		321.9	0.1	30	1	16,519	19,973,055
May-17		128.4	23.3	31	1	16,542	18,896,058
Jun-17		25.8	66.1	30	0	16,565	19,295,450
Jul-17		2.2	130.3	31	0	16,589	21,774,130
Aug-17		4.9	112.9	31	0	16,612	21,246,039
Sep-17		57.2	41.1	30	1	16,635	17,965,876
Oct-17		230.1	2.9	31	1	16,659	19,594,955
Nov-17		410.0	0.0	30	1	16,682	21,192,835
Dec-17		594.3	0.0	31	0	16,706	25,182,873

Weather Normal 2,755,399,940

2007	241,154,636						242,713,895
2008	245,623,028						245,158,521
2009	247,239,189						247,420,181
2010	250,239,379						246,990,938
2011	246,758,167						247,885,579
2012	245,129,838						249,563,259
2013	251,758,061						250,594,629
2014	253,254,986						252,873,667
2015	255,774,983						255,126,551
2016	259,382,036						257,987,085
2017							259,085,636

Total to 2015 2,496,314,304 2,496,314,304

2,755,399,940

	<u>Purchases</u>	<u>Modeled Purchases</u>	<u>Difference</u>	<u>% Difference</u>	<u>Loss Factor</u>	<u>Total Billed</u>	<u>Residential</u>	<u>GS<50</u>	<u>GS>50</u>	<u>Sentinels</u>	<u>Streetlights</u>	<u>USL</u>	<u>Hydro_One Load Transfers</u>
Weather Normal Projection													
2007	241,154,636	245,109,643	3,955,007	1.6%	1.0979	219,644,847	148,690,902	28,463,422	39,320,570	126,371	1,495,947	519,694	1,027,941
2008	245,623,028	243,752,148	(1,870,880)	-0.8%	1.0828	226,847,622	149,960,621	28,399,681	45,269,406	124,212	1,533,899	508,215	1,051,589
2009	247,239,189	243,433,415	(3,805,774)	-1.5%	1.0791	229,106,454	150,373,777	28,113,433	47,473,258	122,021	1,576,912	493,680	953,373
2010	250,239,379	246,677,801	(3,561,577)	-1.4%	1.0792	231,874,950	148,340,356	29,188,874	51,128,771	116,703	1,580,058	493,680	1,026,508
2011	246,758,167	249,085,615	2,327,448	0.9%	1.0563	233,601,583	150,098,110	30,548,695	49,921,685	110,241	1,457,369	489,312	976,170
2012	245,129,838	246,975,037	1,845,198	0.8%	1.0660	229,950,205	144,943,095	30,723,398	51,138,110	113,360	1,569,709	478,327	984,206
2013	251,758,061	250,054,817	(1,703,245)	-0.7%	1.0812	232,845,910	147,964,296	30,842,995	50,921,722	101,844	1,472,134	470,797	1,072,122
2014	253,254,986	254,540,890	1,285,904	0.5%	1.0625	238,347,364	152,377,958	32,022,040	50,592,267	107,980	1,625,553	463,267	1,158,299
2015	255,774,983	255,309,255	(465,728)	-0.2%	1.0544	242,586,977	151,042,923	34,218,675	54,636,276	103,536	1,106,444	463,092	1,016,031
2016	259,382,036	261,375,685	1,993,649	0.8%	1.0718	242,016,318	148,724,722	33,243,041	57,980,607	106,305	536,550	468,048	957,045
2017		259,085,636				241,430,751							
Average					1.0731								
Usage Per Customer													
2007							11,446	34,754	553,811	679	601	5,839	1,027,941
2008							11,295	33,971	620,129	668	593	6,050	1,051,589
2009							11,112	32,881	659,351	632	601	5,948	953,373
2010							10,867	33,744	751,894	581	588	6,020	1,026,508
2011							10,893	34,095	745,100	490	534	6,041	976,170
2012							10,395	33,623	752,954	659	575	6,080	984,206
2013							10,434	32,492	760,026	606	518	6,068	1,072,122
2014							10,502	32,305	753,235	637	556	6,129	1,158,299
2015							10,163	34,199	764,144	625	382	6,093	1,016,031
2016							9,784	32,711	767,108	640	187	6,213	957,045
2017							9,784	32,711	767,108	640	187	6,213	957,045
2007							0.9868	0.9775	1.1197	0.9829	0.9861	1.0361	1.0230
2008							0.9838	0.9679	1.0632	0.9467	1.0136	0.9831	0.9066
2009							0.9780	1.0263	1.1404	0.9183	0.9796	1.0122	1.0767
2010							1.0024	1.0104	0.9910	0.8439	0.9078	1.0034	0.9510
2011							0.9543	0.9862	1.0105	1.3445	1.0771	1.0065	1.0082
2012							1.0037	0.9663	1.0094	0.9202	0.8998	0.9980	1.0893
2013							1.0065	0.9942	0.9911	1.0514	1.0740	1.0100	1.0804
2014							0.9677	1.0586	1.0145	0.9801	0.6867	0.9941	0.8772
2015							0.9626	0.9565	1.0039	1.0247	0.4908	1.0196	0.9419
2016							1.0000	1.0000	1.0000	1.0000	1.0000	1.0000	1.0000
Used							1.0000	1.0000	1.0000	1.0000	1.0000	1.0000	1.0000
Geomean							0.9827	0.9933	1.0369	0.9934	0.8785	1.0069	0.9921
Non Weather Corrected Forecast													
2017						245,431,464	151,246,724	34,085,676	58,031,490	104,785	546,843	458,900	957,045
Weather Corrected Forecast													
2017						241,430,751	148,389,788	32,701,037	56,130,544	104,785	546,843	458,900	957,045
% Weather Sensitive													
2017						(4,000,713)	82.50%	82.50%	65.00%	0	0	0	0

Allocation of Weather Sensitive Amount
2017

		(2,618,843)	(590,195)	(791,675)	0	0	0	0
CDM Adjustment 2017	(2,141,809)	(238,093)	(794,444)	(1,109,272)	0	0	0	0
Persistence Assumption - Total								
	2016	2017						
2016 Programs	3,143,714	3,143,714						
2017 Programs		1,139,903						
Target Credit	3,143,714	1,139,903						
Residential %	23.0%	19.6%						
Persistence Assumption - Residential								
2016 Programs	253,000	253,000						
2017 Programs		223,186						
Target Credit	253,000	223,186						
Persistence Assumption - GS < 50 kW								
2016 Programs	763,843	763,843						
2017 Programs		825,045						
Target Credit	763,843	825,045						
Persistence Assumption - GS > 50 kW								
2016 Programs	84,871	84,871						
2016 CHP Prj	2,042,000	2,042,000						
2017 Programs		91,672						
Target Credit	2,126,871	91,672						
2016 Programs	3,143,714	3,143,714						
2017 Programs		1,139,903						
Check	0	0						
		0						

245,431,464									
239,288,942	CDM Adjustment 2,141,809	0							
190,619,699									

Residential	GS<50	GS>50	Sentinels	Streets	USL	Hydro One Load Transfers
61.6%	13.9%	23.6%	0.0%	0.2%	0.2%	0.4%
62.0%	13.7%	23.5%	0.0%	0.2%	0.2%	0.4%

(4,000,713)

(2,141,809) 0

0

	<u>Residential</u>	<u>GS<50</u>	<u>GS>50</u>	<u>Sentinels</u>	<u>Streetlights</u>	<u>USL</u>	<u>Total</u>	<u>Number of Customers - 3 Main Classes</u>		
2007	12,991	819	71	186	2,489	89	16,645	13,881		
2008	13,277	836	73	186	2,588	84	17,044	14,186		
2009	13,533	855	72	193	2,625	83	17,361	14,460		
2010	13,651	865	68	201	2,685	82	17,552	14,584		
2011	13,779	896	67	225	2,728	81	17,776	14,742		
2012	13,943	914	68	172	2,728	79	17,903	14,925		
2013	14,181	949	67	168	2,843	78	18,286	15,197		
2014	14,509	991	67	169	2,923	76	18,736	15,568		
2015	14,862	1,001	72	166	2,898	76	19,073	15,934		
2016	15,202	1,016	76	166	2,863	75	19,398	16,293		
2017	15,459	1,042	76	164	2,918	74	19,733	16,577	16,577	23

Growth Rate in Customer Numbers

2007							
2008	1.0220	1.0208	1.0282	1.0000	1.0398	0.9438	
2009	1.0193	1.0227	0.9863	1.0376	1.0143	0.9881	
2010	1.0087	1.0117	0.9444	1.0415	1.0229	0.9880	
2011	1.0094	1.0358	0.9853	1.1194	1.0160	0.9878	
2012	1.0119	1.0198	1.0137	0.7648	1.0000	0.9712	
2013	1.0171	1.0389	0.9865	0.9763	1.0423	0.9862	
2014	1.0231	1.0442	1.0025	1.0084	1.0281	0.9742	
2015	1.0243	1.0094	1.0645	0.9784	0.9912	1.0055	
2016	1.0229	1.0157	1.0571	1.0020	0.9881	0.9912	
Geomean	1.0170	1.0253	1.0009	0.9857	1.0192	0.9805	
Used	1.0170	1.0253	1.0009	0.9857	1.0192	0.9805	

	GS>50	Sentinels	Streetlights	Total
2007	116,956	351	4,153	121,460
2008	134,693	345	4,261	139,299
2009	136,122	339	4,370	140,832
2010	144,502	324	4,389	149,215
2011	139,425	306	4,416	144,148
2012	144,982	315	4,424	149,721
2013	130,935	283	4,149	135,367
2014	135,394	300	4,581	140,275
2015	141,987	288	3,140	145,414
2016	150,802	295	1,641	152,738
2017	155,585	291	1,558	157,434

kW/kWh

2007	0.2974%	0.2778%	0.2776%
2008	0.2975%	0.2778%	0.2778%
2009	0.2867%	0.2778%	0.2771%
2010	0.2826%	0.2778%	0.2778%
2011	0.2793%	0.2779%	0.3030%
2012	0.2835%	0.2779%	0.2818%
2013	0.2571%	0.2779%	0.2818%
2014	0.2676%	0.2778%	0.2818%
2015	0.2599%	0.2778%	0.2838%
2016	0.2601%	0.2778%	0.3059%
Average	0.2772%	0.2778%	0.2849%

Summary TORONTO LESTER B. PEARSON INT'L A

Summary of All Heating Degree Days

Month	1997	1998	1999	2000	2001	2002	2003	2004	2005	2006	2007	2008	2009	2010	2011	2012	2013	2014	2015	2016	10 Year Avg	20 Year Trend	
																						2017	
January	756.60	624.80	749.80	738.90	684.90	572.20	814.50	849.10	770.00	551.80	647.10	623.50	830.20	720.00	775.30	611.10	624.40	825.90	792.40	670.40	712.03	717.81	
February	593.00	512.20	548.10	612.70	587.60	540.20	699.00	631.70	616.40	604.30	740.10	674.70	606.40	598.30	654.20	531.70	631.50	737.10	856.80	588.40	661.92	697.22	
March	600.00	492.30	550.60	418.60	566.60	545.60	581.10	487.30	608.60	516.60	546.70	610.20	533.80	422.80	572.80	349.40	554.80	690.60	615.50	476.10	537.27	541.94	
April	366.80	282.00	296.70	339.20	293.80	329.50	372.50	331.50	306.80	293.30	356.40	253.90	305.80	225.10	332.30	321.70	358.60	356.90	313.70	394.80	321.92	331.85	
May	260.80	59.10	97.10	138.60	111.50	227.50	177.90	158.90	189.40	136.90	136.40	193.50	158.80	107.90	134.10	80.70	109.10	132.10	89.30	142.50	128.44	116.39	
June	20.60	54.70	25.00	34.50	29.80	36.20	43.40	44.20	8.90	19.50	16.50	22.70	49.30	21.70	19.00	23.20	33.00	14.10	33.80	24.20	25.75	22.52	
July	12.40	1.00	-	6.60	9.30	-	0.20	3.60	-	-	3.20	1.00	6.20	1.80	-	-	1.30	4.00	4.00	-	2.15	0.63	
August	17.00	3.40	8.40	11.50	-	0.20	2.00	12.80	0.20	4.20	5.20	12.70	9.80	2.10	-	2.00	4.40	8.80	4.40	-	4.94	2.71	
September	87.10	39.70	49.30	99.50	73.60	21.80	54.90	30.00	22.60	80.90	36.90	59.00	55.20	78.10	48.20	85.00	83.00	69.70	31.10	25.90	57.21	52.62	
October	266.90	223.40	267.60	212.70	232.50	292.20	276.00	226.30	220.20	288.30	137.70	278.60	287.80	241.60	235.50	242.50	208.50	224.30	249.80	194.20	230.05	224.97	
November	466.50	392.60	367.50	432.00	325.80	445.00	398.50	379.10	388.40	382.20	462.50	451.60	361.20	405.30	342.10	434.00	478.20	482.10	345.00	337.80	409.98	400.37	
December	586.20	535.10	579.30	780.30	505.00	619.40	561.50	643.40	665.30	500.50	630.70	654.60	631.30	676.20	534.00	533.50	687.90	557.30	429.70	608.00	594.32	576.04	
Total	4,033.90	3,220.30	3,539.40	3,826.10	3,420.40	3,629.80	3,981.50	3,797.90	3,796.80	3,378.50	3,719.40	3,836.00	3,835.80	3,500.90	3,647.50	3,214.80	3,774.70	4,102.90	3,765.50	3,462.30	3,685.98		

Summary of All Cooling Degree Days

Month	1997	1998	1999	2000	2001	2002	2003	2004	2005	2006	2007	2008	2009	2010	2011	2012	2013	2014	2015	2016	10 Year Avg	20 Year Trend	
																						2017	
January	-	-	-	-	-	-	-	-	-	-	-	-	-	-	-	-	-	-	-	-	0.00	0.00	
February	-	-	-	-	-	-	-	-	-	-	-	-	-	-	-	-	-	-	-	-	0.00	0.00	
March	-	-	-	-	-	-	-	-	-	-	-	-	-	-	-	0.20	-	-	-	-	0.02	0.03	
April	-	-	-	-	1.40	8.30	2.40	-	-	-	-	-	1.20	-	-	-	-	-	-	-	0.12	-0.13	
May	-	28.60	19.40	23.70	12.20	7.80	-	8.60	0.80	26.00	22.40	2.50	6.90	45.70	13.00	36.70	23.10	11.90	34.10	36.90	23.32	28.31	
June	73.20	82.40	96.00	41.10	79.70	70.00	52.90	31.60	146.30	73.60	99.20	71.50	34.20	58.70	52.20	101.60	59.60	68.10	32.30	83.70	66.11	63.33	
July	103.00	101.30	196.50	71.80	100.90	192.40	118.30	86.40	188.70	167.30	106.10	111.00	43.70	164.90	198.50	195.40	120.80	71.00	114.30	176.90	130.26	141.66	
August	46.80	117.70	79.10	92.50	160.00	142.70	128.00	59.60	140.70	101.60	141.00	64.00	91.00	138.80	122.20	112.10	93.80	81.80	88.60	195.40	112.87	123.42	
September	11.70	45.00	48.90	35.20	35.70	87.60	24.00	41.20	52.10	12.90	47.50	26.70	20.90	31.50	39.70	35.60	28.10	30.10	81.90	69.40	41.14	46.81	
October	2.80	-	-	1.20	2.00	10.00	-	1.50	7.60	1.10	19.80	-	-	-	2.40	1.10	0.40	1.30	-	4.10	2.91	2.32	
November	-	-	-	-	-	-	-	-	-	-	-	-	-	-	-	-	-	-	-	-	0.00	0.00	
December	-	-	-	-	-	-	-	-	-	-	-	-	-	-	-	-	-	-	-	-	0.00	0.00	
Total	237.50	375.00	439.90	265.50	391.90	518.80	325.60	228.90	536.20	382.50	436.00	275.70	197.90	439.60	428.00	482.70	325.80	264.20	351.20	566.40	376.75		

2017 Load Forecast	kWh	kW	2015 %RPP
Residential	149,174,008		94%
General Service < 50 kW	32,869,504		83%
General Service 50 to 4,999 kW	56,130,544	155,585	4%
Street Lighting	546,843	1,558	0%
Sentinel Lighting	104,785	291	84%
Unmetered Scattered Load	463,258		94%
TOTAL	239,288,942	157,434	

Electricity - Commodity RPP	2017 Forecasted	2017 Loss Factor	2017		
Residential	140,223,568	1.0678	149,730,726	\$0.10728	\$16,063,112
General Service < 50 kW	27,281,689	1.0678	29,131,387	\$0.10728	\$3,125,215
General Service 50 to 4,999 kW	2,245,222	1.0678	2,397,448	\$0.10728	\$257,198
Street Lighting	0	1.0678	0	\$0.10728	\$0
Sentinel Lighting	88,019	1.0678	93,987	\$0.10728	\$10,083
Unmetered Scattered Load	435,462	1.0678	464,987	\$0.10728	\$49,884
TOTAL	170,273,960		181,818,534		\$19,505,492

Electricity - Commodity Non-RPP	2017 Forecasted	2017 Loss Factor	2017		
Residential	8,950,440	1.0678	9,557,280	\$0.10670	\$1,019,762
General Service < 50 kW	5,587,816	1.0678	5,966,670	\$0.10670	\$636,644
General Service 50 to 4,999 kW	53,885,322	1.0678	57,538,747	\$0.10670	\$6,139,384
Street Lighting	546,843	1.0678	583,919	\$0.10670	\$62,304
Sentinel Lighting	16,766	1.0678	17,902	\$0.10670	\$1,910
Unmetered Scattered Load	27,795	1.0678	29,680	\$0.10670	\$3,167
TOTAL	69,014,983		73,694,199		\$7,863,171

Transmission - Network	Volume Metric	2017		
Residential	kWh	159,288,006	\$0.0057	\$907,942
General Service < 50 kW	kW	35,098,057	\$0.0052	\$182,510
General Service 50 to 4,999 kW	kW	155,585	\$2.1047	\$327,461
Street Lighting	kWh	1,558	\$1.5873	\$2,473
Sentinel Lighting	kW	291	\$1.5954	\$464
Unmetered Scattered Load	kW	494,667	\$0.0052	\$2,572
TOTAL				\$1,423,421

Transmission - Connection	Volume Metric	2017		
Residential	kWh	159,288,006	\$0.0041	\$653,081
General Service < 50 kW	kWh	35,098,057	\$0.0039	\$136,882
General Service 50 to 4,999 kW	kW	155,585	\$1.4837	\$230,842
Street Lighting	kW	1,558	\$1.1469	\$1,787
Sentinel Lighting	kW	291	\$1.7004	\$495
Unmetered Scattered Load	kWh	494,667	\$0.0039	\$1,929
TOTAL				\$1,025,016

Wholesale Market Service		Volume Metric	2017		
Class per Load Forecast					
Residential		kWh	159,288,006	\$0.0036	\$573,437
General Service < 50 kW		kWh	35,098,057	\$0.0036	\$126,353
General Service 50 to 4,999 kW		kWh	59,936,195	\$0.0036	\$215,770
Street Lighting		kWh	583,919	\$0.0036	\$2,102
Sentinel Lighting		kWh	111,889	\$0.0036	\$403
Unmetered Scattered Load		kWh	494,667	\$0.0036	\$1,781
TOTAL			255,512,733		\$919,846

Rural Rate Assistance		Volume Metric	2017		
Class per Load Forecast					
Residential		kWh	159,288,006	\$0.0013	\$207,074
General Service < 50 kW		kWh	35,098,057	\$0.0013	\$45,627
General Service 50 to 4,999 kW		kWh	59,936,195	\$0.0013	\$77,917
Street Lighting		kWh	583,919	\$0.0013	\$759
Sentinel Lighting		kWh	111,889	\$0.0013	\$145
Unmetered Scattered Load		kWh	494,667	\$0.0013	\$643
TOTAL			255,512,733		\$332,167

OESP		Volume Metric	2017		
Class per Load Forecast					
Residential		kWh	159,288,006	\$0.0011	\$175,217
General Service < 50 kW		kWh	35,098,057	\$0.0011	\$38,608
General Service 50 to 4,999 kW		kWh	59,936,195	\$0.0011	\$65,930
Street Lighting		kWh	583,919	\$0.0011	\$642
Sentinel Lighting		kWh	111,889	\$0.0011	\$123
Unmetered Scattered Load		kWh	494,667	\$0.0013	\$643
TOTAL			255,512,733		\$281,163

LV		Volume Metric(w/o losses)	2017		
Class per Load Forecast					
Residential		kWh	149,174,008	\$0.0028	\$417,687
General Service < 50 kW		kWh	32,869,504	\$0.0028	\$92,035
General Service 50 to 4,999 kW		kW	155,585	\$0.9912	\$154,216
Street Lighting		kW	1,558	\$0.9870	\$1,537
Sentinel Lighting		kW	291	\$1.0027	\$292
Unmetered Scattered Load		kWh	463,258	\$0.0028	\$1,297
TOTAL			182,664,205		\$667,065

Summary		2017	Calculation Of SME Charges		
4062-OESP	\$	281,163			
SME	\$	-			
4705-Power Purchased		\$27,368,663	Residential	Customers	Rate
4708-Charges-WMS		\$919,846			
4714-Charges-NW		\$1,423,421			
4716-Charges-CN		\$1,025,016			
4730-Rural Rate Assistance		\$332,167	GS<50		
4750-Low Voltage		\$667,065			
TOTAL		32,017,341			\$0