

April 12, 2018

**RESS**

Ms. Kirsten Walli  
Board Secretary  
Ontario Energy Board  
2300 Yonge Street, 27<sup>th</sup> Floor  
Toronto, ON M4P 1E4

Dear Ms. Walli,

**Re: Union Gas Limited (“Union”)  
2018 Sudbury Replacement Project  
Board File EB-2017-0180**

Please find attached the revised Change Request 2 for the above-noted project.

Union believes that this change in the temporary land rights required to construct the project are not significant and would appreciate your timely review and approval of this request.

In the event that you have any questions or would like to discuss in more detail, please do not hesitate to contact me at 519-436-5457.

Sincerely,

*[original signed by]*

W. T. (Bill) Wachsmuth, RPF  
Senior Administrator, Regulatory Projects

cc: Nancy Marconi, OEB  
Zora Crnojacki, OEB  
Ritchie Murray, OEB

# REQUEST TO VARY

**Project Name:** 2018 Sudbury Replacement Project

**OEB File Number:** EB-2017-0180

**Change Request:** 2

## **Description and Rationale for Change**

Union is proposing changes to the dimensions and locations of temporary land use areas adjacent to Hydro One's Martendale Transmission Station. Hydro One requested Union move a temporary land use area west as it is proposing some construction activities within the Martendale Transmission Station. This change is minor in nature and is to accommodate a request from the directly affected landowner Hydro One.

## **Construction and Restoration Practices**

Construction and restoration of the Proposed Facilities will be completed following Union's standard practices.

## **Environmental**

Union will follow its standard environmental mitigation measures.

## **Consultation**

This change only affects Hydro One lands and the change is a result of a request from Hydro One.

## **Lands**

Hydro One has approved the proposed change.

## **Costs**

There will be no increase in project costs as a result of this change.

## **Schedule**

This change will not result in any change to the project in-services date.

## **Attachments**

Schedule 1 shows the original location of the temporary lands adjacent to the Martendale Transmission Station.

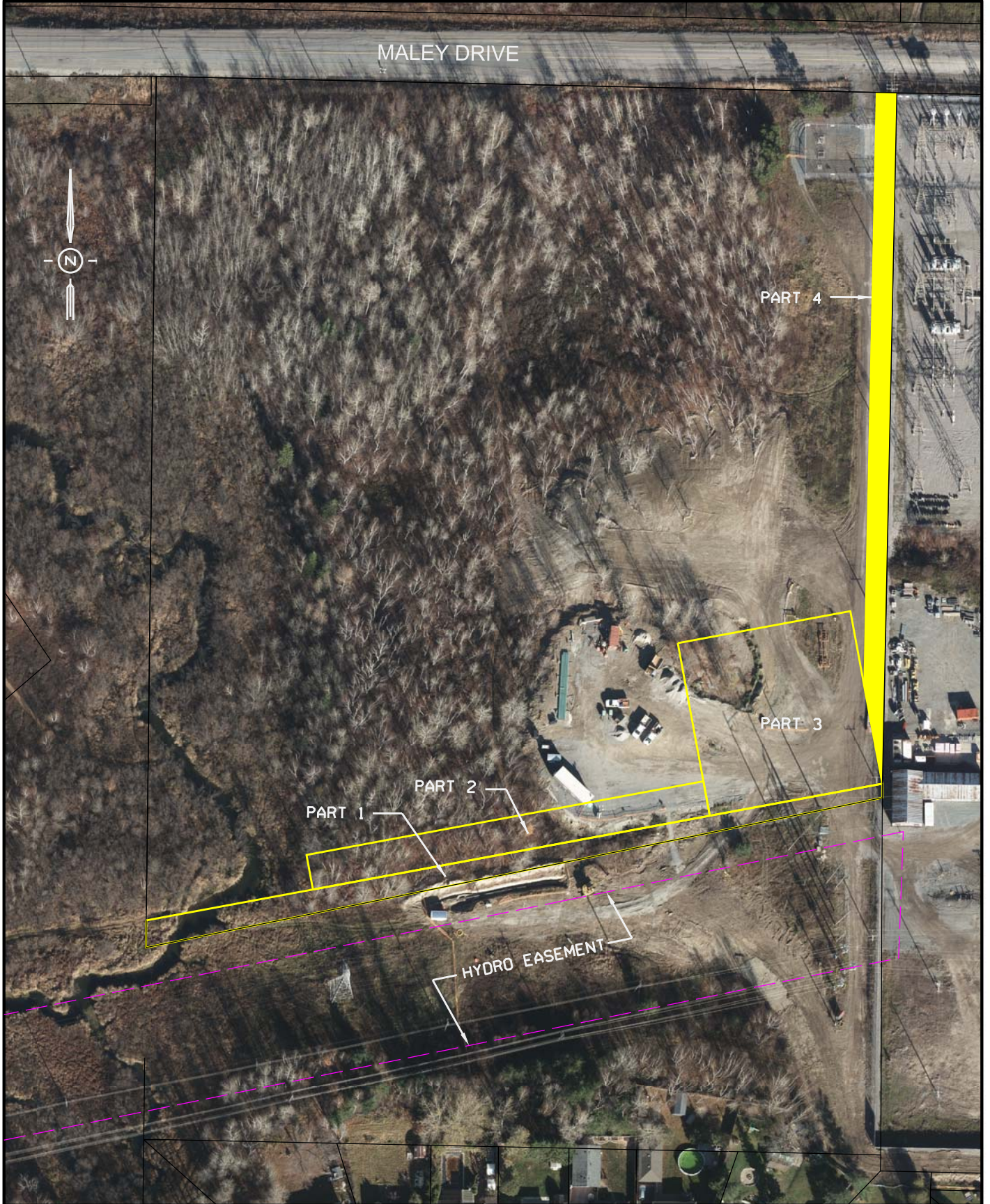
Schedule 2 shows the proposed location of the temporary land rights adjacent to the Martendale Transmission Station.



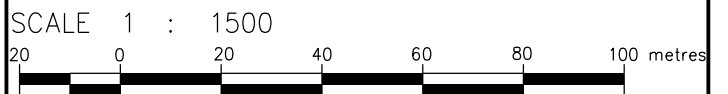
# UNION GAS LIMITED

Property Sketch  
 Showing Approximate Location of  
 Existing Pipeline Easements and Any Existing Easements Within  
 Municipality of Greater Sudbury, Land Registry Status: ACTIVE  
 Description: PCL 35391 SEC SES; PT LT 10 CON 6 NEELON PT 1 SR3064;  
 S/T LT86480, LT86481; S/T EAS OVER PT 2 ON 53R6151 AS IN LT402515;  
 GREATER SUDBURY

EB-2017-0180  
 Change Request 2  
 Schedule 1



OWNER: THE HYDRO-ELECTRIC POWER COMMISSION OF ONTARIO



PART	APPROX. SIZE (metres)		APPROX. AREA		PART	APPROX. SIZE (metres)		APPROX. AREA	
	(width)	(length)	(hectares)	(acres)		(width)	(length)	(hectares)	(acres)
1 (TEMP)	6.0	213.6	(TLU) 0.092 (TS) 0.031	0.227 (75%) 0.076 (25%)					
2 (TEMP)	10.0	115.0	(TLU) 0.086 (TS) 0.029	0.213 (75%) 0.071 (25%)					
3 (TEMP)	50.0	50.0	(TLU) 0.188 (TS) 0.062	0.464 (75%) 0.157 (25%)					
4 (ACCESS)	6.0	182.4	(TLU) 0.082 (TS) 0.027	0.203 (75%) 0.067 (25%)					

PIN: 735650389      SCALE: 1:1500      \*ALL DISTANCES ARE APPROXIMATE.      DATE: MAR 8, 2017



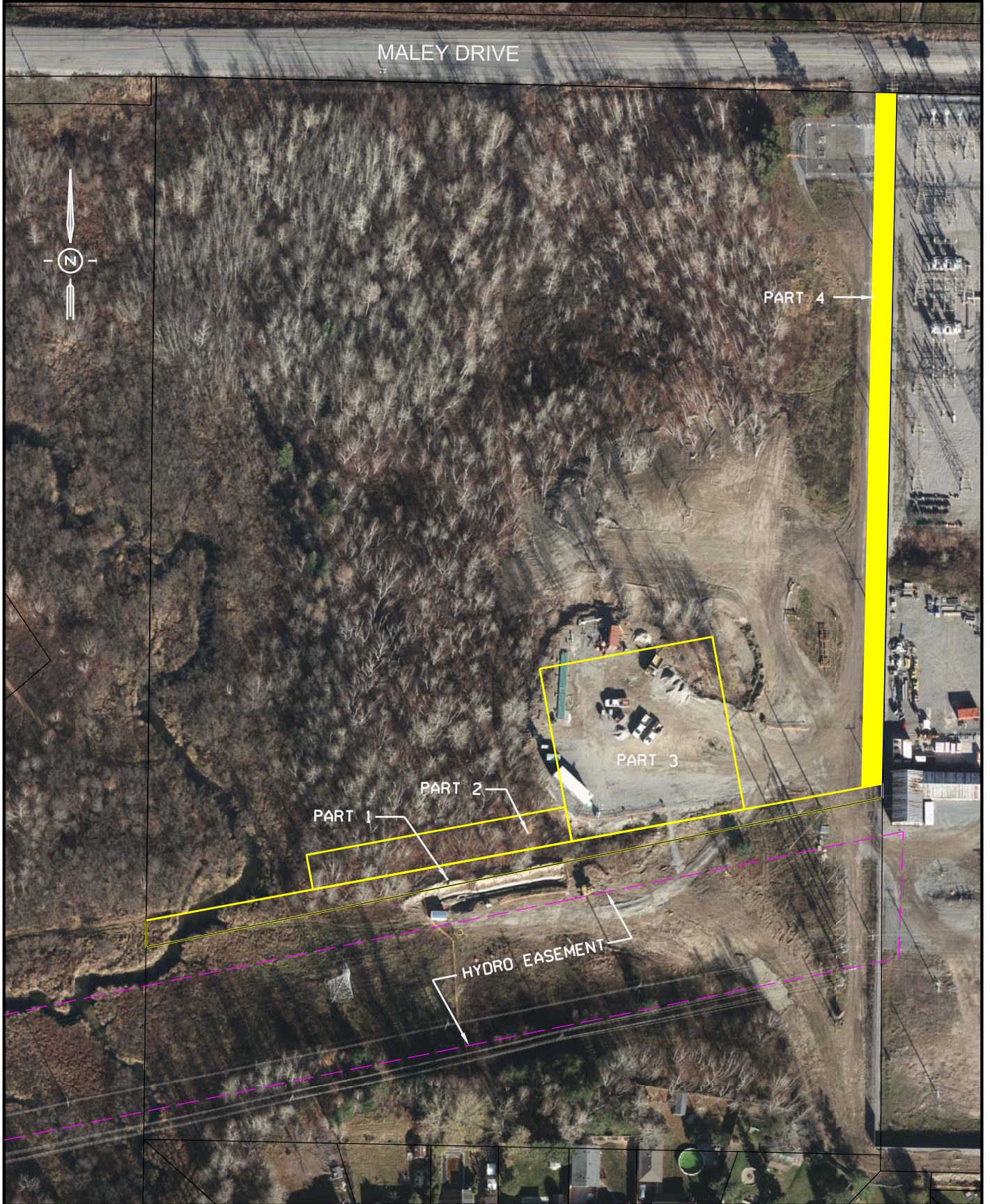
# UNION GAS LIMITED

Property Sketch  
 Showing Approximate Location of  
 Existing Pipeline Easements and Any Existing Easements Within  
 Municipality of Greater Sudbury, Land Registry Status: ACTIVE  
 Description: PCL 35391 SEC SES; PT LT 10 CON 6 NEELON PT 1 SR3064;  
 S/T LT86480, LT86481; S/T EAS OVER PT 2 ON 53R6151 AS IN LT402515;  
 GREATER SUDBURY

EB-2017-0180

Change Request 2

Schedule 2



OWNER: THE HYDRO-ELECTRIC POWER COMMISSION OF ONTARIO

SCALE 1 : 1500



PART	APPROX. SIZE (metres)		APPROX. AREA		PART	APPROX. SIZE (metres)		APPROX. AREA	
	(width)	(length)	(hectares)	(acres)		(width)	(length)	(hectares)	(acres)
1 (TEMP)	6.0	213.6	(TLU) 0.092 (TS) 0.031	0.227 (75%) 0.076 (25%)					
2 (TEMP)	10.0	75.0	(TLU) 0.056 (TS) 0.019	0.139 (75%) 0.046 (25%)					
3 (TEMP)	50.0	50.0	(TLU) 0.188 (TS) 0.062	0.464 (75%) 0.157 (25%)					
4 (ACCESS)	6.0	197.5	(TLU) 0.089 (TS) 0.030	0.220 (75%) 0.073 (25%)					

PIN: 735650389

SCALE: 1:1500

\*ALL DISTANCES ARE APPROXIMATE.

DATE: MAR 23, 2018

REV No. 02