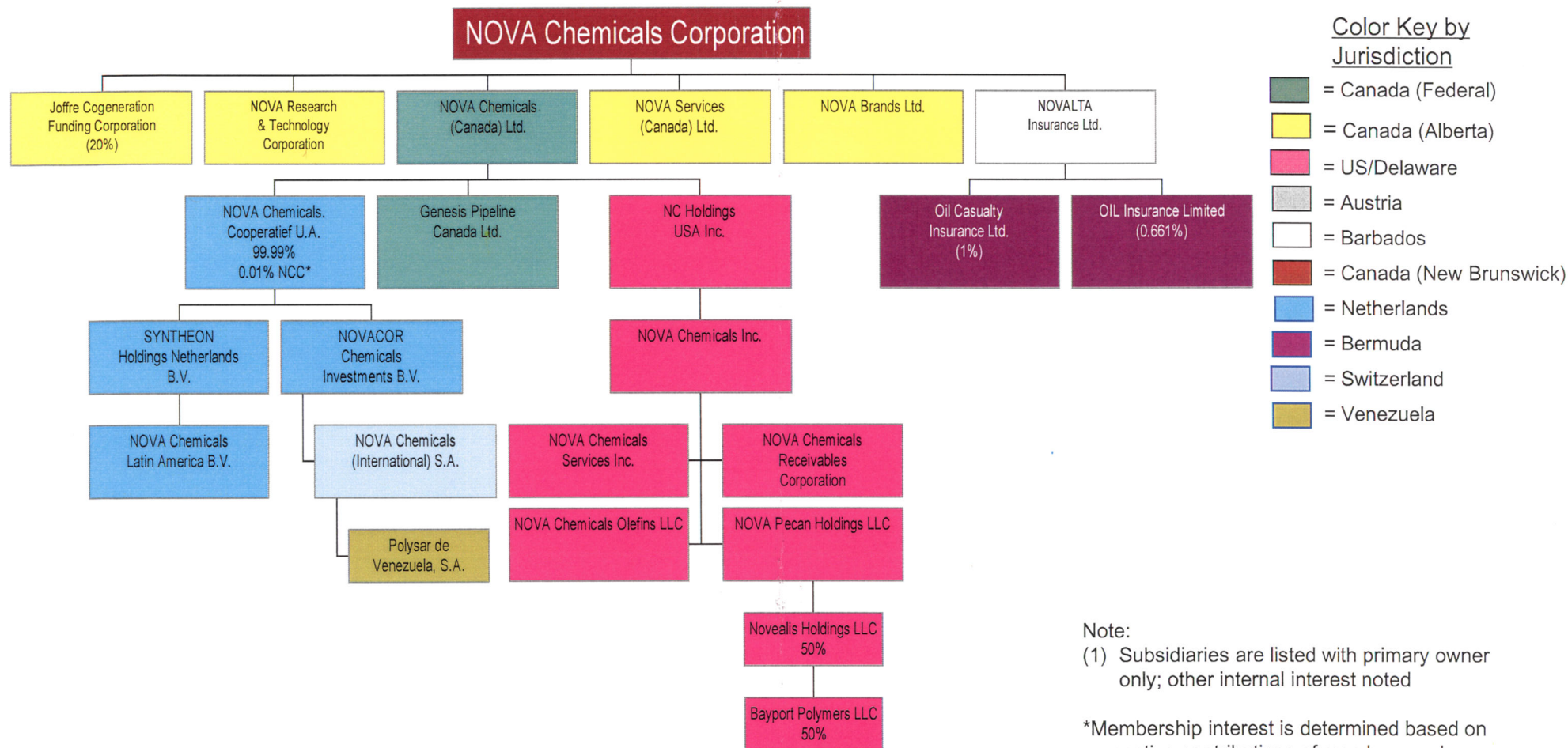


# NOVA CHEMICALS CORPORATION CORPORATE STRUCTURE



## Color Key by Jurisdiction

- = Canada (Federal)
- = Canada (Alberta)
- = US/Delaware
- = Austria
- = Barbados
- = Canada (New Brunswick)
- = Netherlands
- = Bermuda
- = Switzerland
- = Venezuela

## Note:

(1) Subsidiaries are listed with primary owner only; other internal interest noted

\*Membership interest is determined based on respective contributions of members and calculated when year end financials are available.