

PLAN

I CERTIFY THAT THIS PLAN IS REGISTERED IN THE LAND REGISTRY OFFICE FOR THE LAND TITLES DIVISION OF ALBERTA (NO. 1) AT \_\_\_\_\_ O'CLOCK ON THE \_\_\_\_\_ DAY OF \_\_\_\_\_ 2019, AND ENTERED IN THE PARCEL REGISTER FOR PROPERTY IDENTIFIER 31135-0004.

REPRESENTATIVE FOR THE LAND REGISTRAR (1)

SCHEDULE

PART	TOWNSHIP	PIN	AREA
1	PART OF KILLINS	PART OF 31135-0004	0.211 ha
2			2.476 ha

PART 1 AND 2 SUBJECT TO LT68364

EXPROPRIATIONS ACT  
PLAN OF SURVEY OF  
PART OF  
TOWNSHIP OF KILLINS  
DISTRICT OF ALGOMA

SCALE = 1:1000

PLAN	ROTATION
P1	1°25'25" COUNTER CLOCKWISE

EXPROPRIATION CERTIFICATE

UPPER CANADA TRANSMISSION, INC., IN ACCORDANCE WITH SECTION 9 OF THE EXPROPRIATIONS ACT, R.S.O. 1990, c.2, DOES HEREBY EXPROPRIATE, TO EXPROPRIATE A LIMITED INTEREST IN THE LANDS AS DESCRIBED BELOW, A TEMPORARY EASEMENT IN FAVOUR OF UPPER CANADA TRANSMISSION, INC. AND ANY SUCCESSORS, ASSIGNS, SERVANTS OR AGENTS THEREOF, FOR THE PURPOSES OF AND INCIDENTAL TO THE CONSTRUCTION OF AN ELECTRICAL TRANSMISSION LINE AND ACCESS ROADS, OVER, ACROSS AND ALONG THAT PORTION OF THE LANDS DESIGNATED AS PARTS 1 & 2 FOR PEDESTRIAN AND VEHICULAR ACCESS OVER THE EASEMENT AREA TO ALLOW UPPER CANADA TRANSMISSION, INC. AND OTHER PARTIES ACCESS TO UPPER CANADA TRANSMISSION, INC.'S TRANSMISSION FACILITIES (BEING TRANSMISSION FACILITIES FOR ELECTRICITY AND/OR FIBER OPTIC TELECOMMUNICATIONS) ALONG WITH THE RIGHT TO IMPROVE THE SURFACE OF THE EASEMENT AREA IN ORDER TO ACCOMMODATE THE TRANSPORTATION OF EQUIPMENT AND VEHICLES, FOR A TERM OF FOUR (4) YEARS FROM THE DATE THAT THE INTEREST IS GRANTED.

THE EXPROPRIATING AUTHORITY  
UPPER CANADA TRANSMISSION, INC.

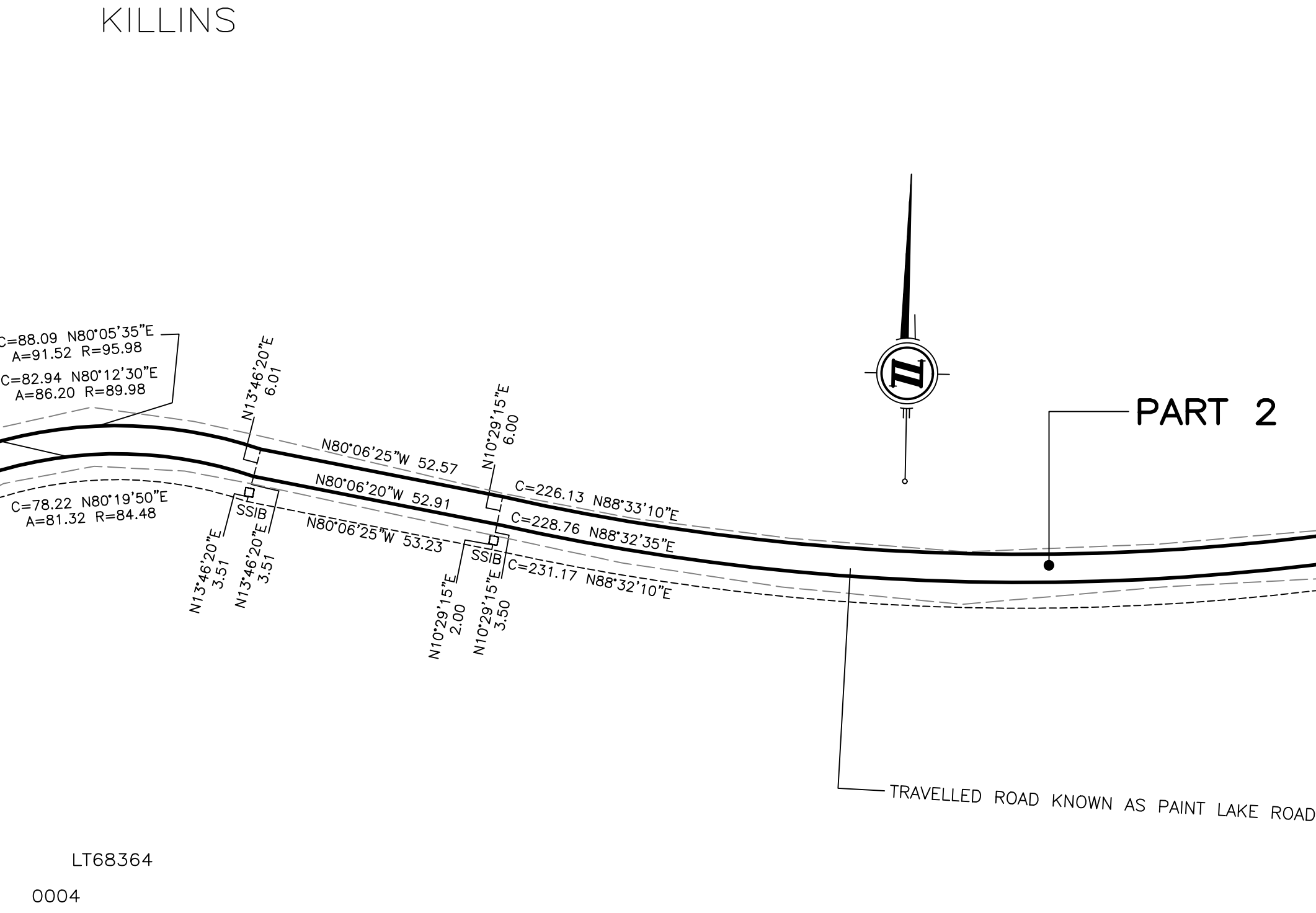
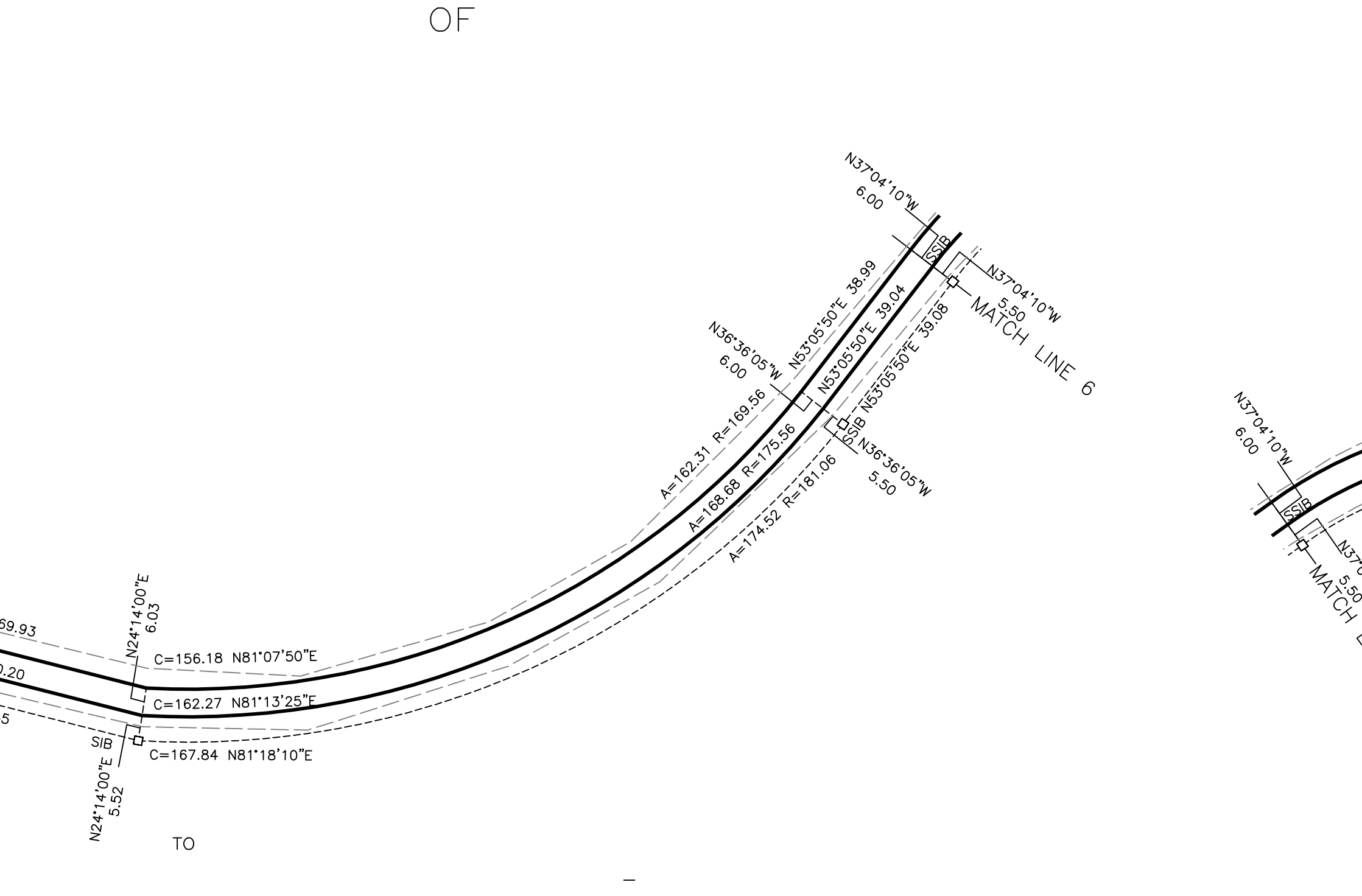
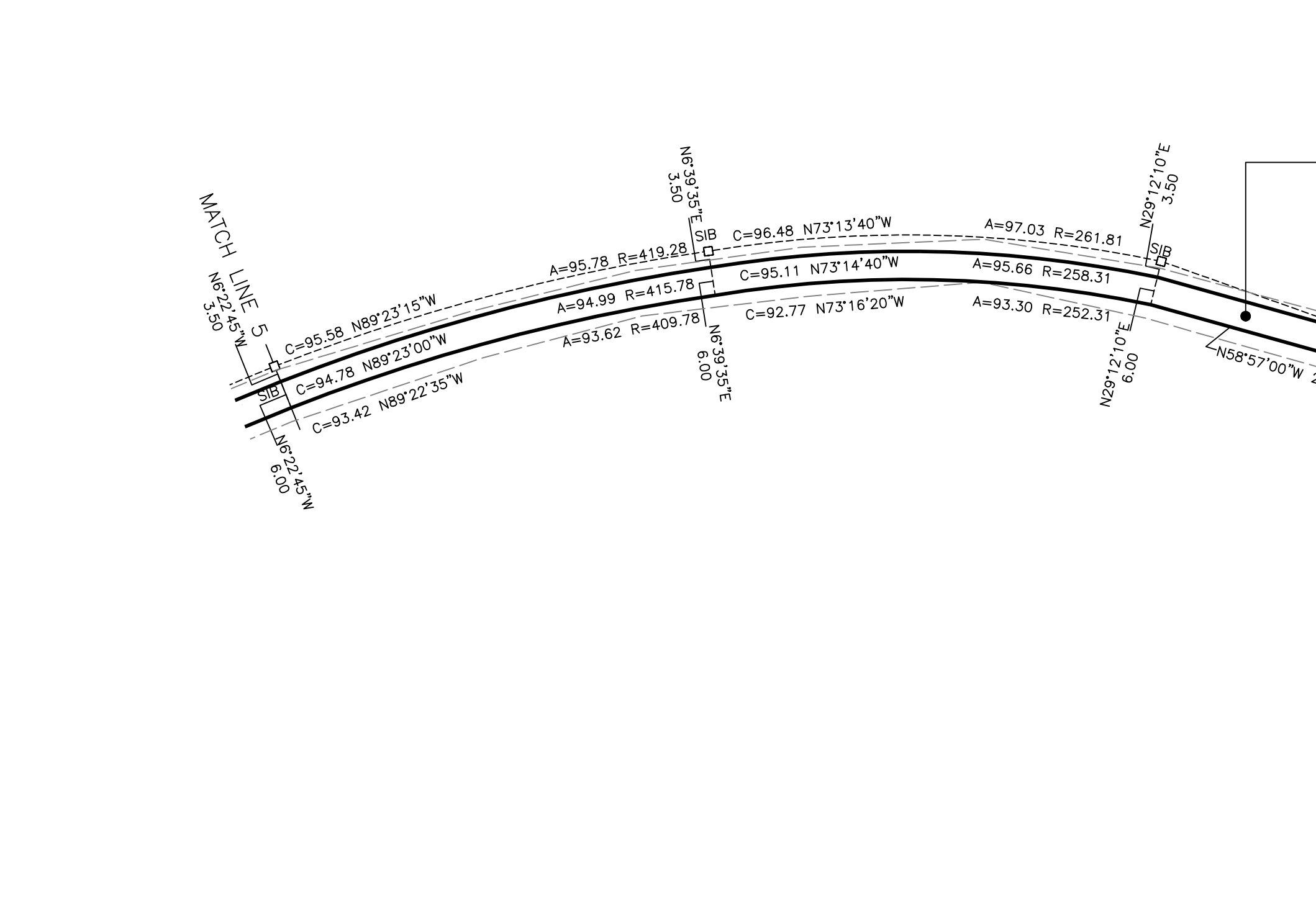
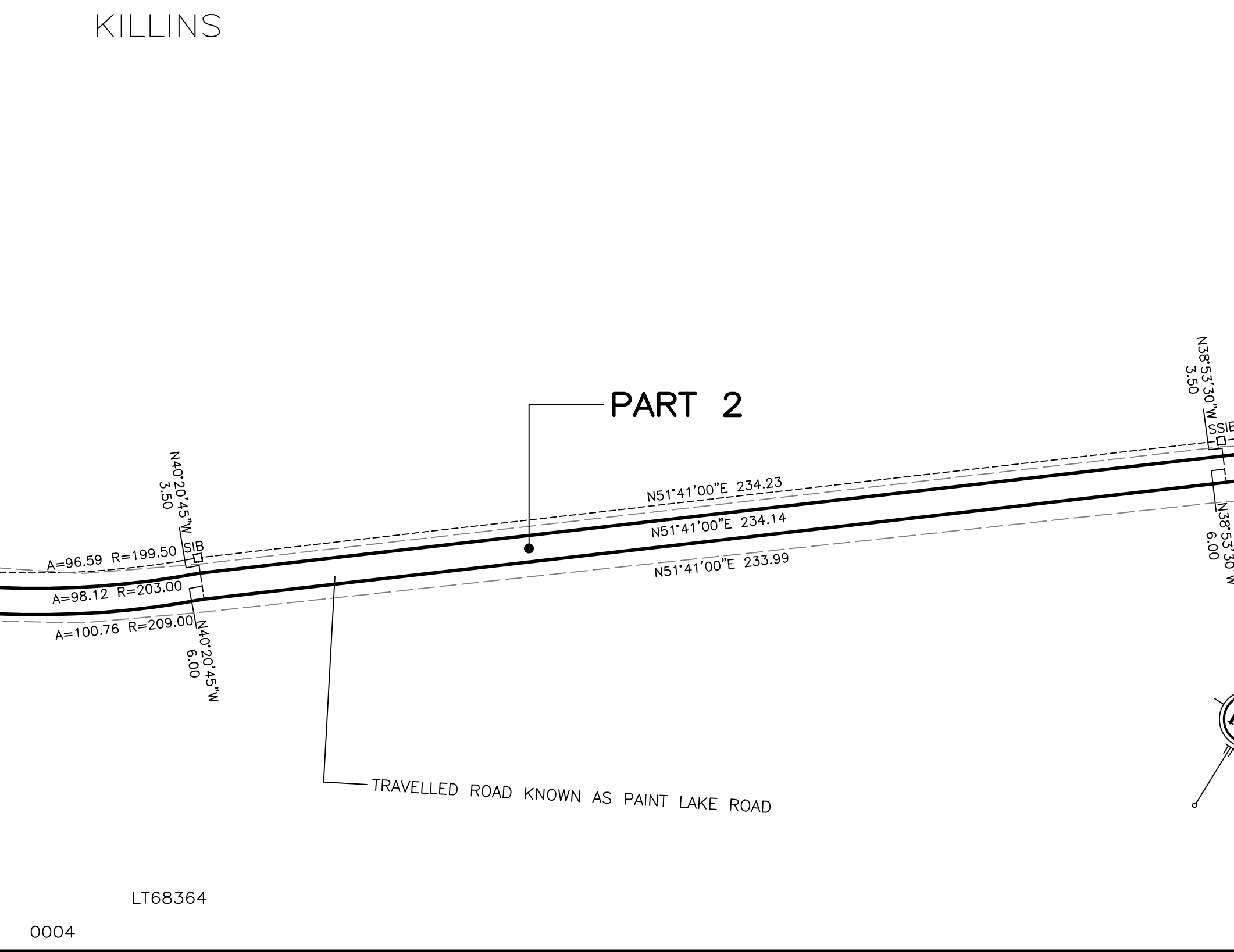
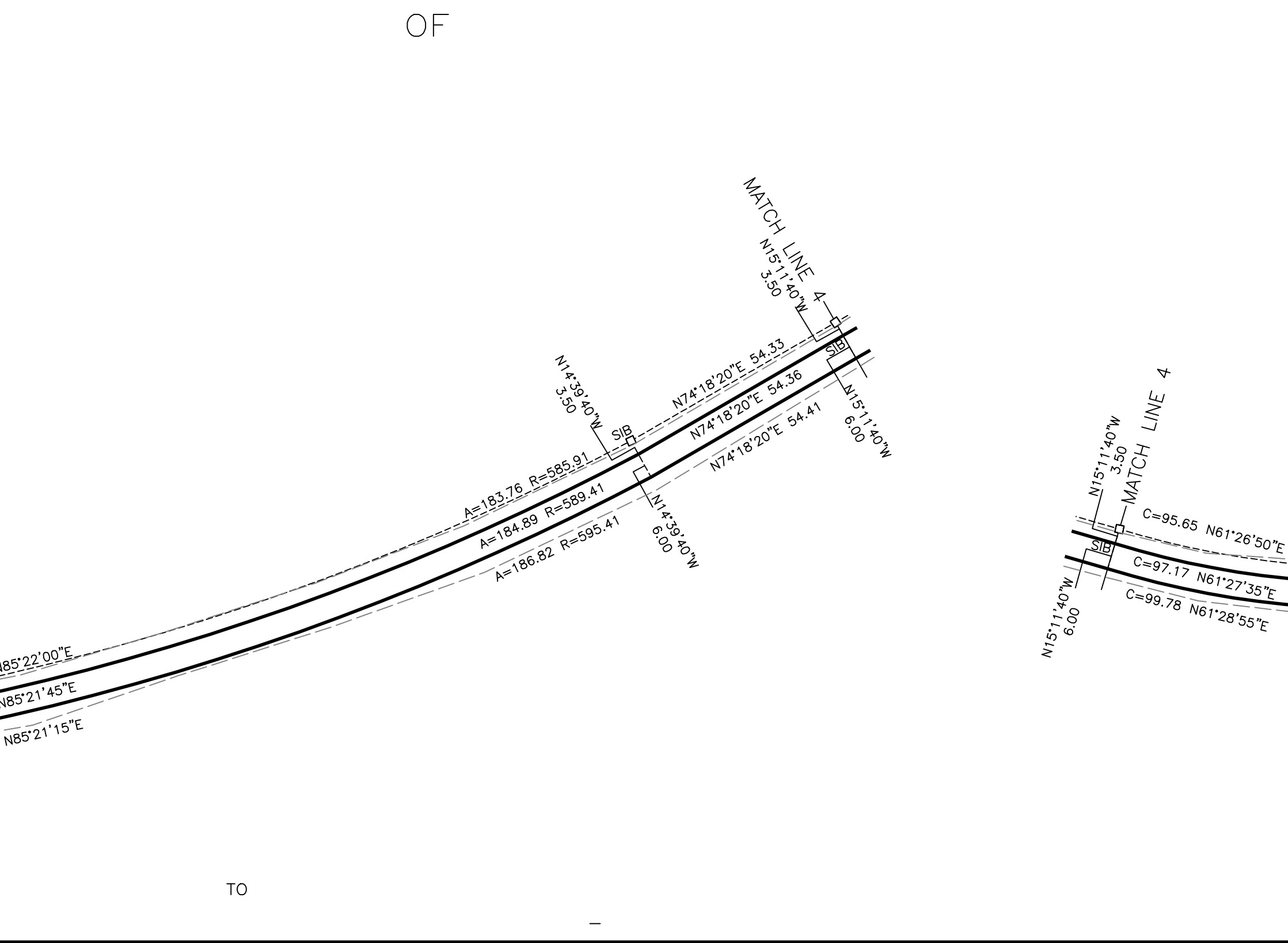
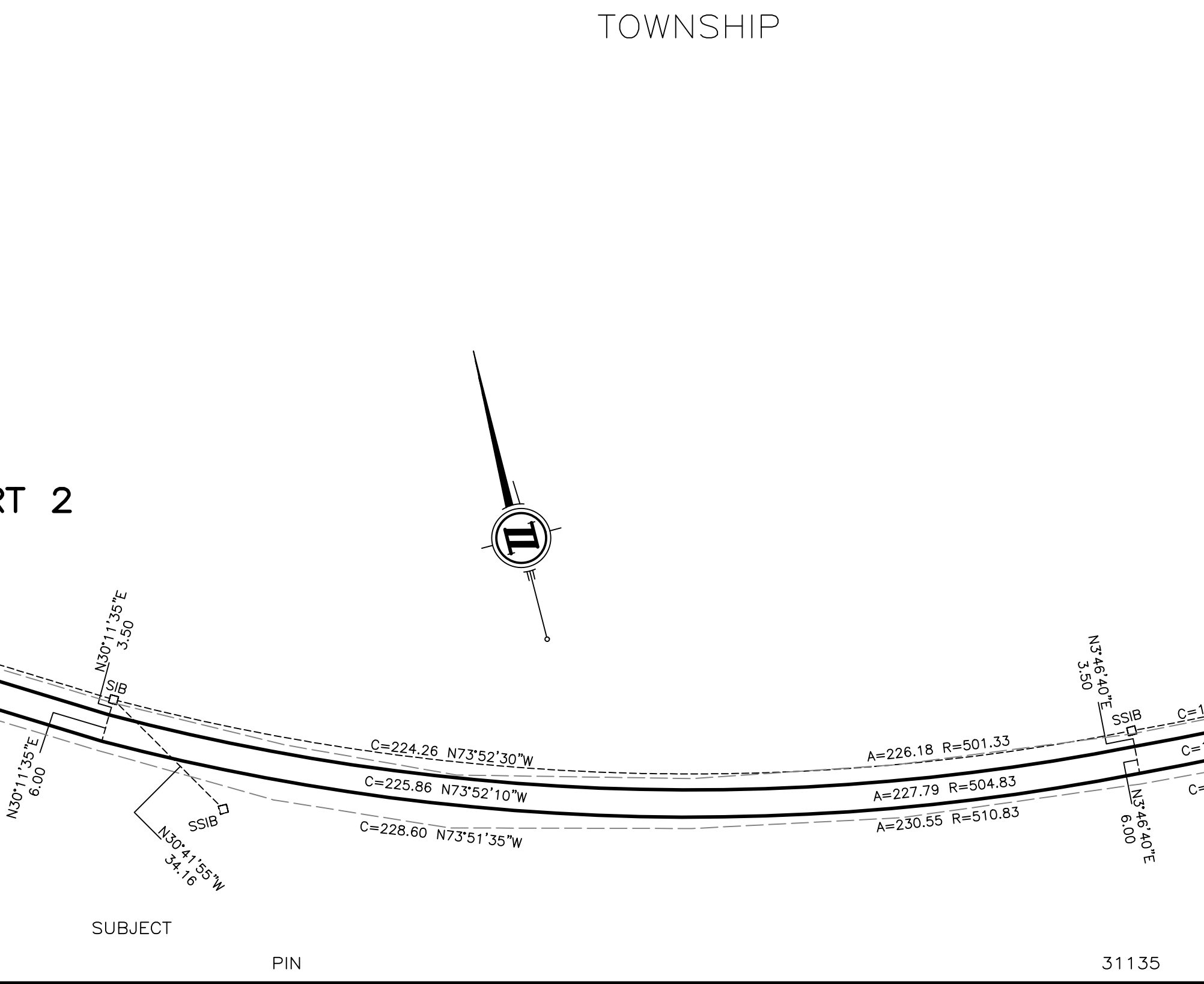
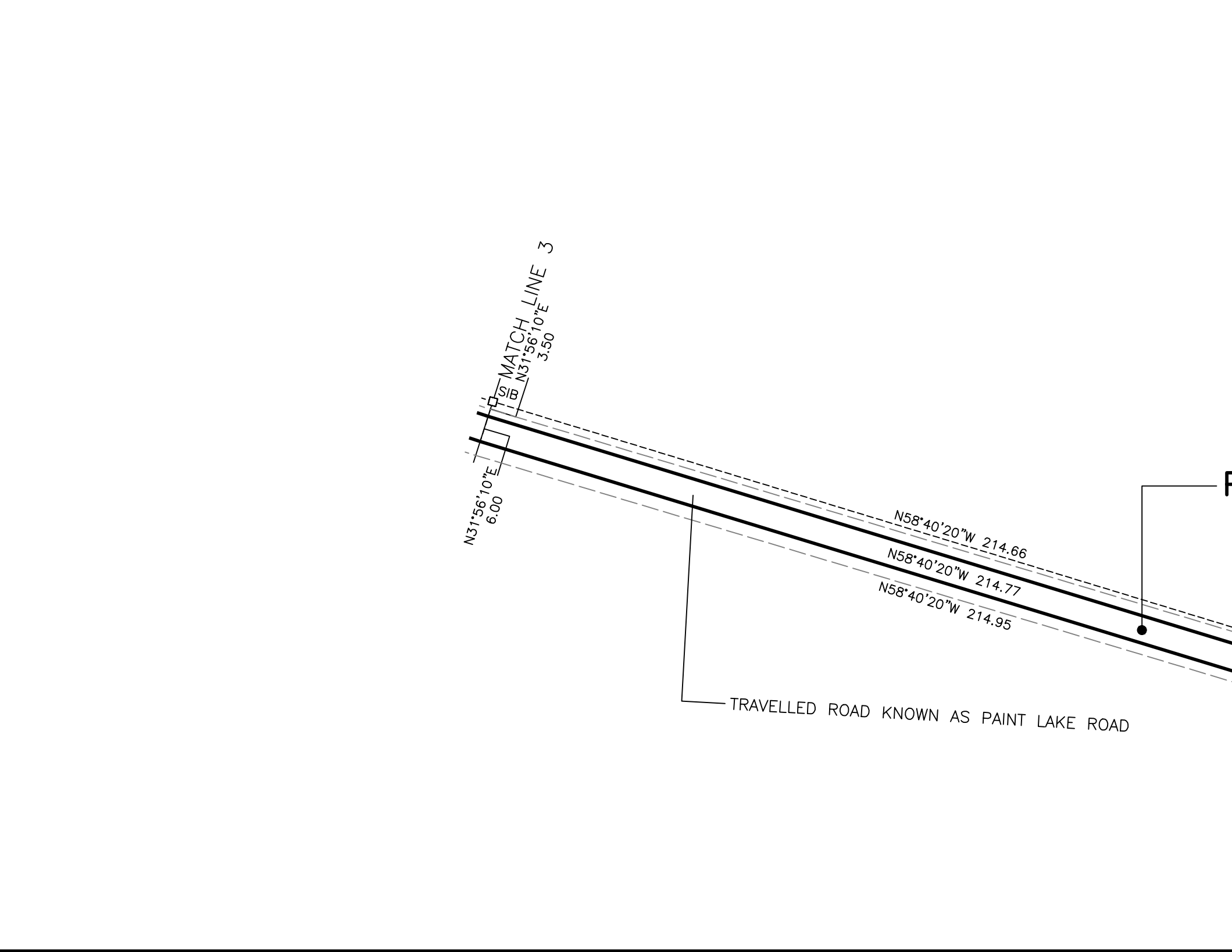
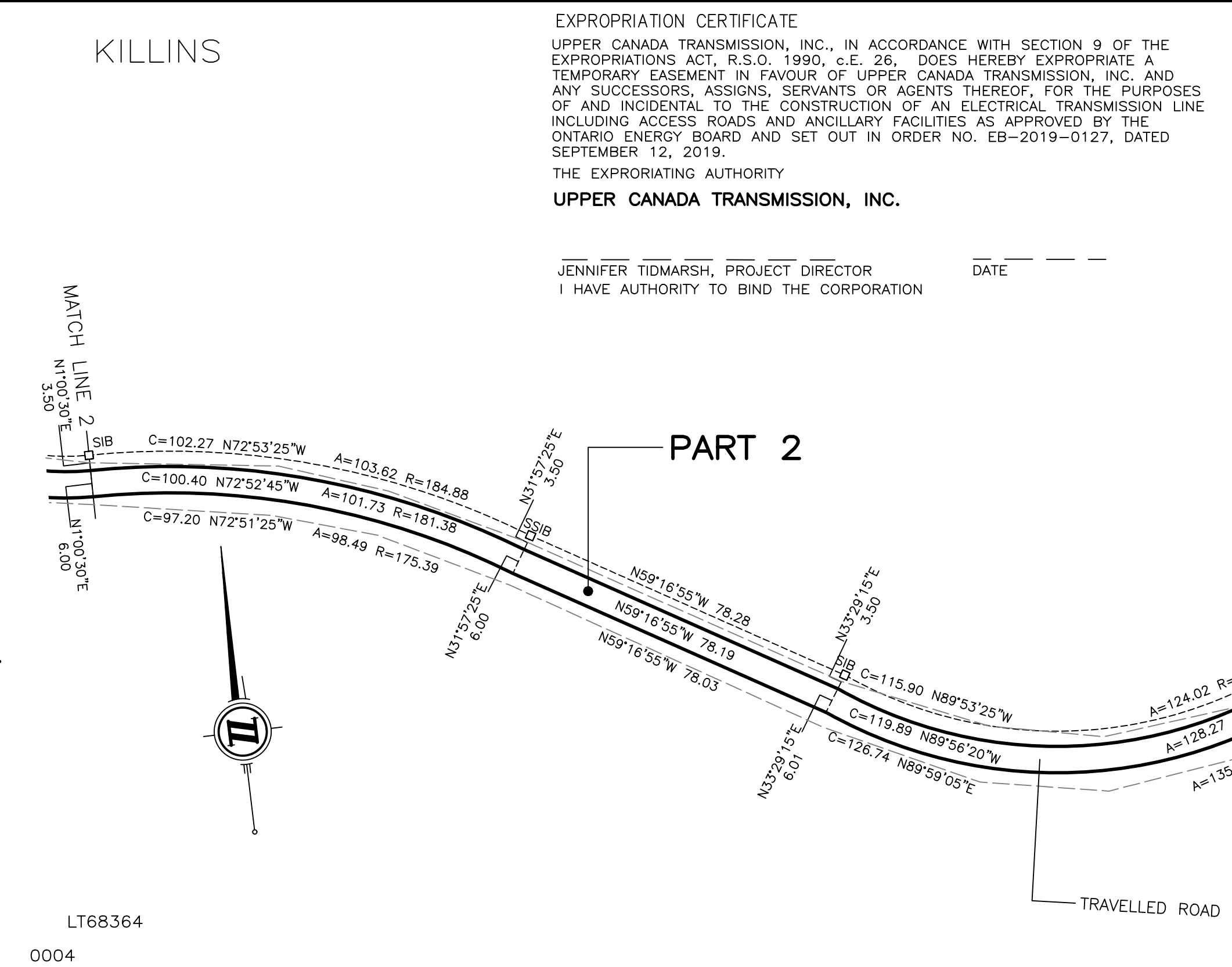
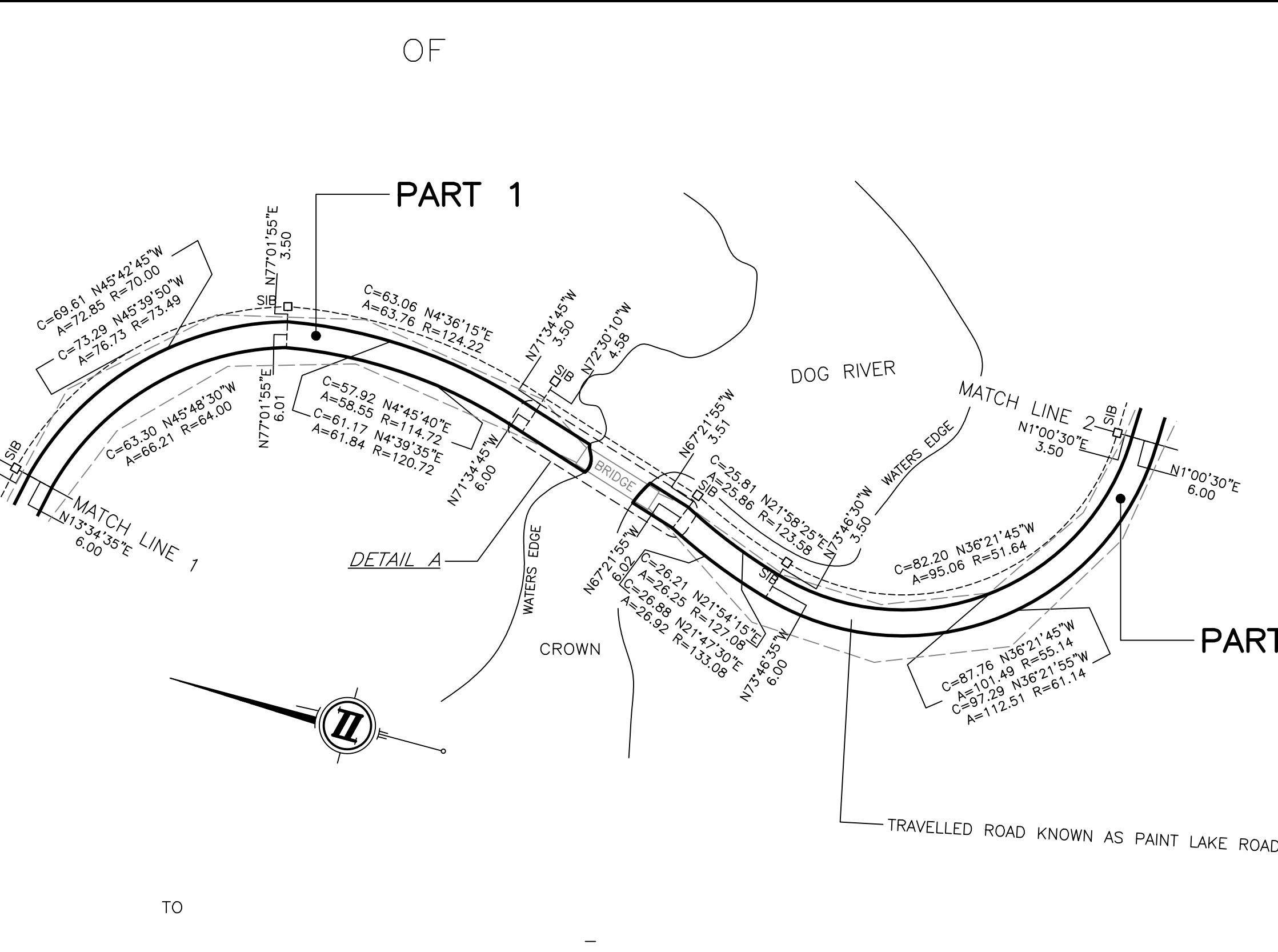
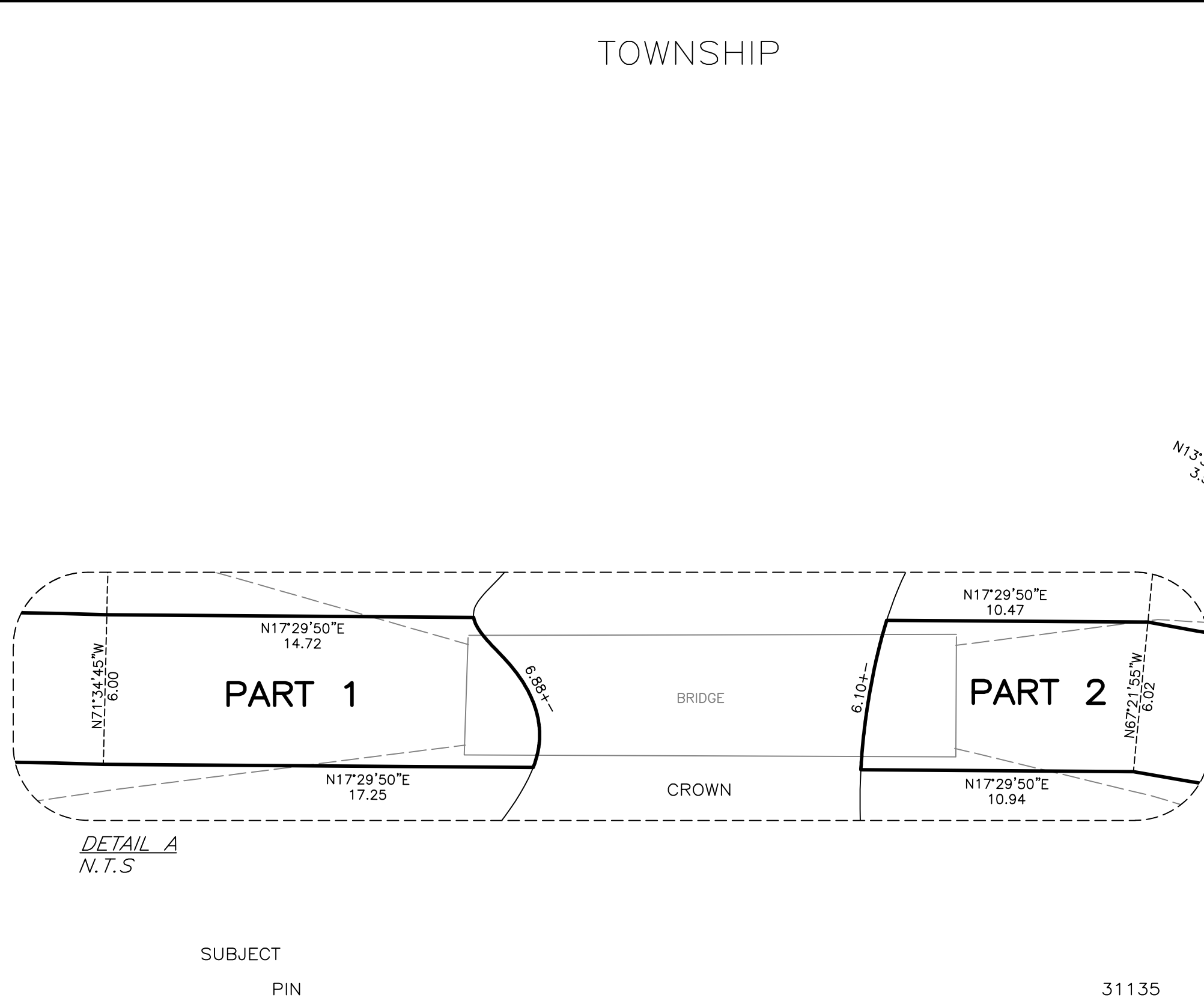
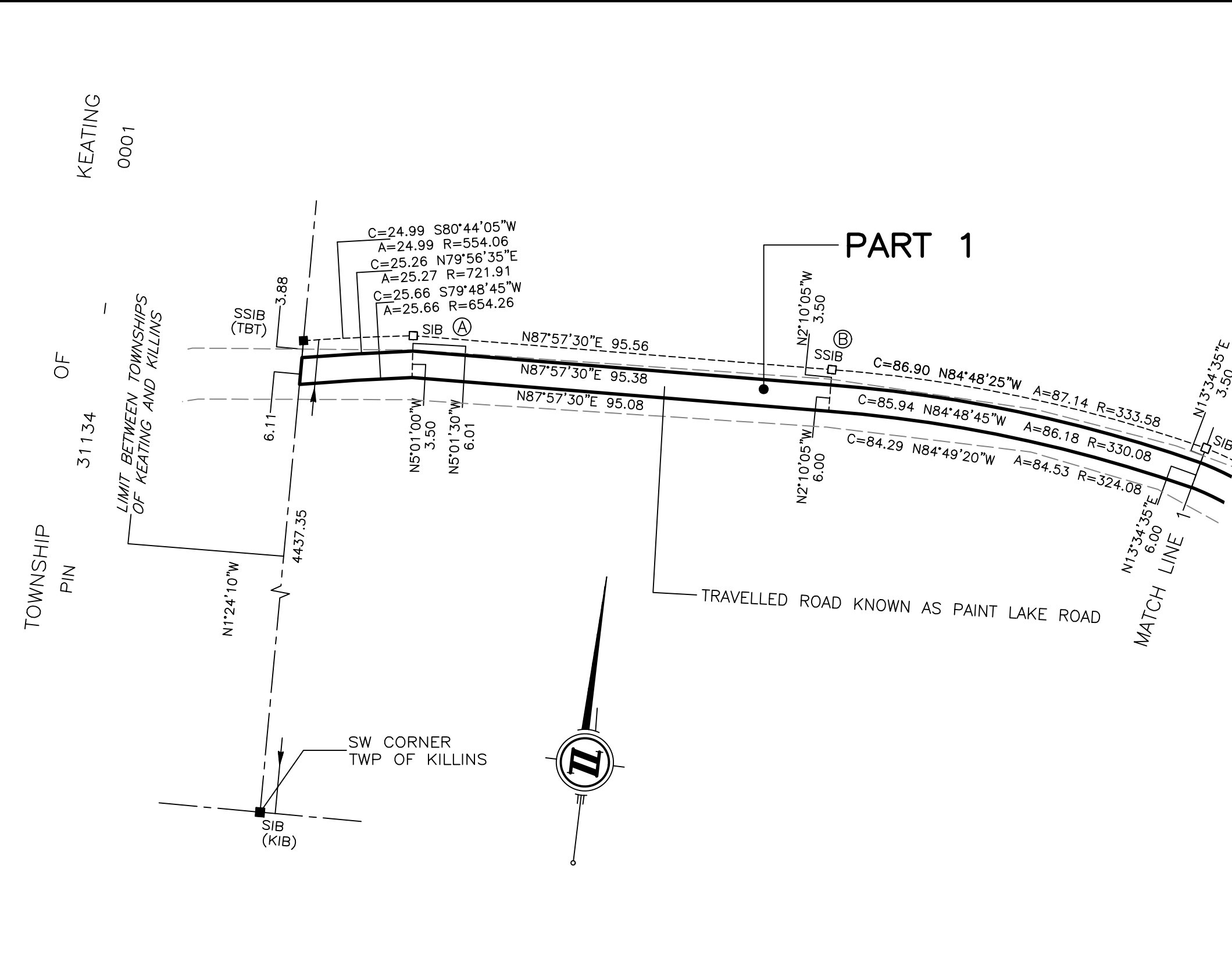
JENNIFER TOMMASH, PROJECT DIRECTOR  
I HAVE AUTHORITY TO BIND THE CORPORATION

CERTIFICATE OF APPROVAL

THE ONTARIO ENERGY BOARD HEREBY CERTIFIES THAT APPROVAL WAS GIVEN TO UPPER CANADA TRANSMISSION, INC. ON THE 12TH DAY OF SEPTEMBER, 2019, TO EXPROPRIATE A LIMITED INTEREST IN THE LANDS AS DESCRIBED BELOW.

A TEMPORARY ROAD EASEMENT AND RIGHT-OF-WAY IN FAVOUR OF UPPER CANADA TRANSMISSION, INC., ITS OFFICERS, EMPLOYEES, AGENTS, CONTRACTORS, SUBCONTRACTORS, TENANTS, FRANCHISEES, LICENSEES, SUCCESSORS AND ASSIGNS IN, ON, OVER, ACROSS AND ALONG THAT PORTION OF THE LANDS DESIGNATED AS PARTS 1 & 2 FOR PEDESTRIAN AND VEHICULAR ACCESS OVER THE EASEMENT AREA TO ALLOW UPPER CANADA TRANSMISSION, INC. AND OTHER PARTIES ACCESS TO UPPER CANADA TRANSMISSION, INC.'S TRANSMISSION FACILITIES (BEING TRANSMISSION FACILITIES FOR ELECTRICITY AND/OR FIBER OPTIC TELECOMMUNICATIONS) ALONG WITH THE RIGHT TO IMPROVE THE SURFACE OF THE EASEMENT AREA IN ORDER TO ACCOMMODATE THE TRANSPORTATION OF EQUIPMENT AND VEHICLES, FOR A TERM OF FOUR (4) YEARS FROM THE DATE THAT THE INTEREST IS GRANTED.

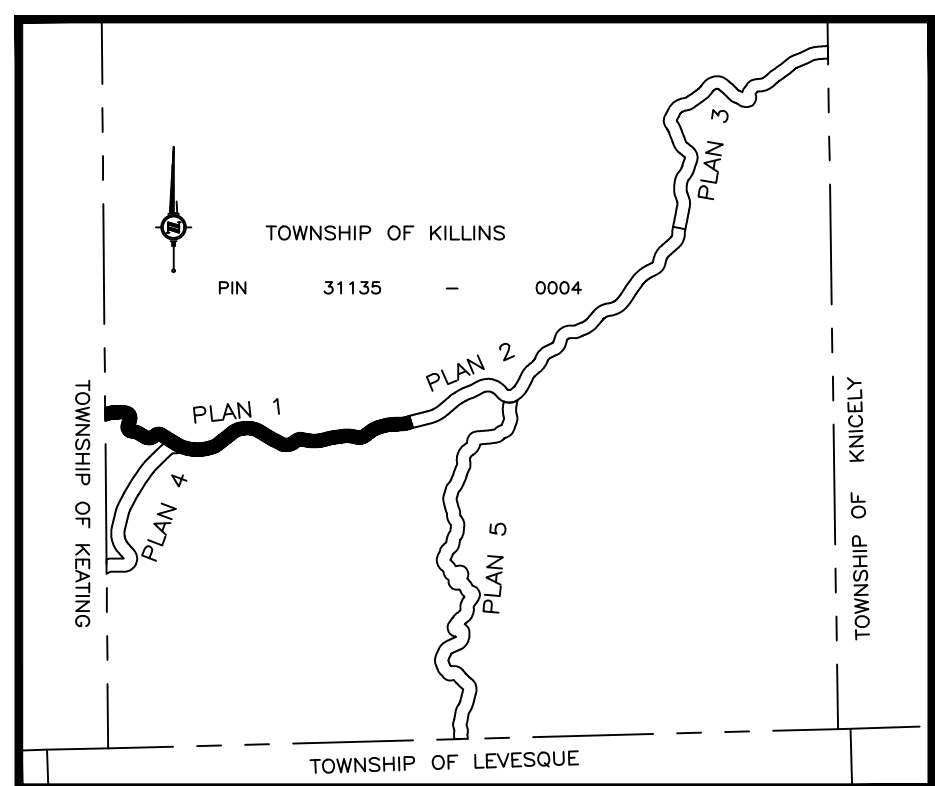
DATED AT \_\_\_\_\_, THIS \_\_\_\_\_ DAY  
OF \_\_\_\_\_, 2019.  
KIRSTEN WALLI BOARD SECRETARY  
ONTARIO ENERGY BOARD



OBSERVED REFERENCE POINTS (ORP's) DERIVED FROM GPS OBSERVATIONS USING THE PRECISE POINT POSITIONING SERVICE AND ARE REFERRED TO UTM ZONE 16, NAD83 (CSRS)(2010). COORDINATES COMPLY WITH THE RURAL ABSOLUTE ACCURACY PER 800.14(2) OF O REG. 216/10.

POINT ID	NORTHING	EASTING
A	5 343 783.55	634 957.16
B	5 343 788.96	630 009.46
C	5 343 646.02	636 901.64

COORDINATES CANNOT, IN THEMSELVES, BE USED TO RE-ESTABLISH CORNERS OR BOUNDARIES SHOWN ON THIS PLAN.



LEGEND

- DENOTES PLANTED SURVEY MONUMENT
- DENOTES FOUND SURVEY MONUMENT
- DENOTES STANDARD IRON BAR
- DENOTES IRON BAR
- DENOTES SHORT STANDARD IRON BAR
- DENOTES ROCK PLUG
- DENOTES ORIGINAL SURVEY NOTES OF THE TOWNSHIP OF KILLINS
- DENOTES KEITH I. BEACOM OLS
- DENOTES TOW L. WILSON OLS

ALL PLANTED SURVEY MONUMENTS ARE (WIT) UNLESS OTHERWISE NOTED. ALL CURVES ARE NON-TANGENTIAL UNLESS OTHERWISE NOTED.

BEARINGS ARE GRID, DERIVED FROM OBSERVED REFERENCE POINTS A AND B, HAVING A BEARING OF N87°57'30"E BY REAL TIME KINEMATIC (RTK) OBSERVATIONS, UTM ZONE 16, NAD83 (CSRS)(2010).

DISTANCES ARE GROUND AND CAN BE CONVERTED TO GRID BY MULTIPLYING BY THE COMBINED SCALE FACTOR OF 0.999842.

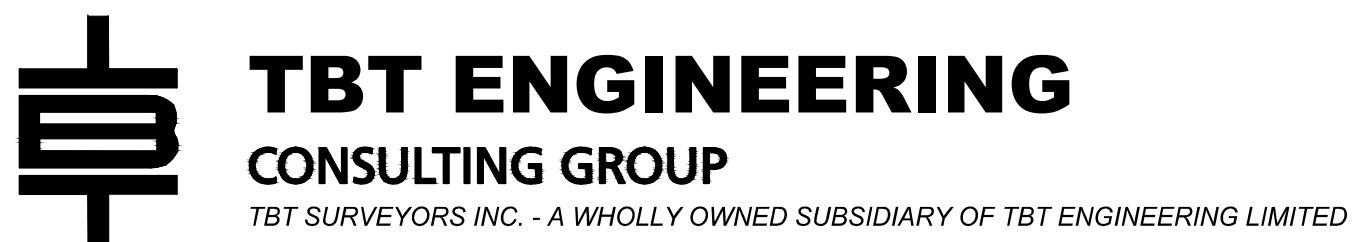
METRIC

DISTANCES AND COORDINATES SHOWN ON THIS PLAN ARE IN METRES AND CAN BE CONVERTED TO FEET BY DIVIDING BY 0.3048.

SURVEYOR'S CERTIFICATE

I CERTIFY THAT:  
1. THIS SURVEY AND PLAN ARE CORRECT AND IN ACCORDANCE WITH THE SURVEYORS ACT AND THE LAND TITLES ACT AND THE REGULATIONS MADE UNDER THEM.  
2. THE SURVEY WAS COMPLETED ON THE 8TH DAY OF AUGUST, 2019.

2019/08/08  
DATE  
PETER DA HAAN  
ONTARIO LAND SURVEYOR



1918 YONGE STREET, THUNDER BAY, ON P7E 6T9  
T: (807) 624-5160 F: (807) 624-5161 www.tbte.co

DRAWN BY: JGL CHECKED BY: PdeH DATED: 2019/09/15  
SHE: No.: The C:\Users\ADMIN\Documents\ The Name: 0024.DWG PLAN=1



PLAN

I CERTIFY THAT THIS PLAN IS REGISTERED IN THE LAND REGISTRY OFFICE FOR THE LAND TITLES DIVISION OF ALGOMA (NO. 1) AT \_\_\_\_\_ 2019, \_\_\_\_\_ O'CLOCK ON THE \_\_\_\_\_ DAY OF \_\_\_\_\_ 2019, AND ENTERED IN THE PARCEL REGISTER FOR PROPERTY IDENTIFIER 31135-0004.

REPRESENTATIVE FOR THE LAND REGISTRAR (1)

SCHEDULE

PART 1, 2 AND 3 ENUMERATED HEREUNDER REFER TO LANDS IN WHICH A TEMPORARY LIMITED INTEREST FOR THE PURPOSES OF THESE UNDEVELOPED AND UNDISTURBED EASEMENT FOR ACCESS FOR A TERM COMMENCING ON REGISTRATION OF THE PLAN AND EXPIRING FOUR YEARS HEREFTER IS EXERCISED BY UPPER CANADA TRANSMISSION, INC.

INTERESTS AS DESCRIBED IN LTB6364 HAVE NOT BEEN EXPROPRIATED AND CONTINUE TO BE SUBJECT TO THOSE INTERESTS.

PART	TOWNSHIP	FIN	AREA
1			0.320 ha
2	PART OF KILLINS	PART OF 31135-0004	0.200 ha
3			2.030 ha

PART 1, 2 AND 3 SUBJECT TO LTB6364

EXPROPRIATIONS ACT

PLAN OF SURVEY OF

PART OF

TOWNSHIP OF KILLINS

DISTRICT OF ALGOMA

SCALE - 1:1000

20 0 25 50

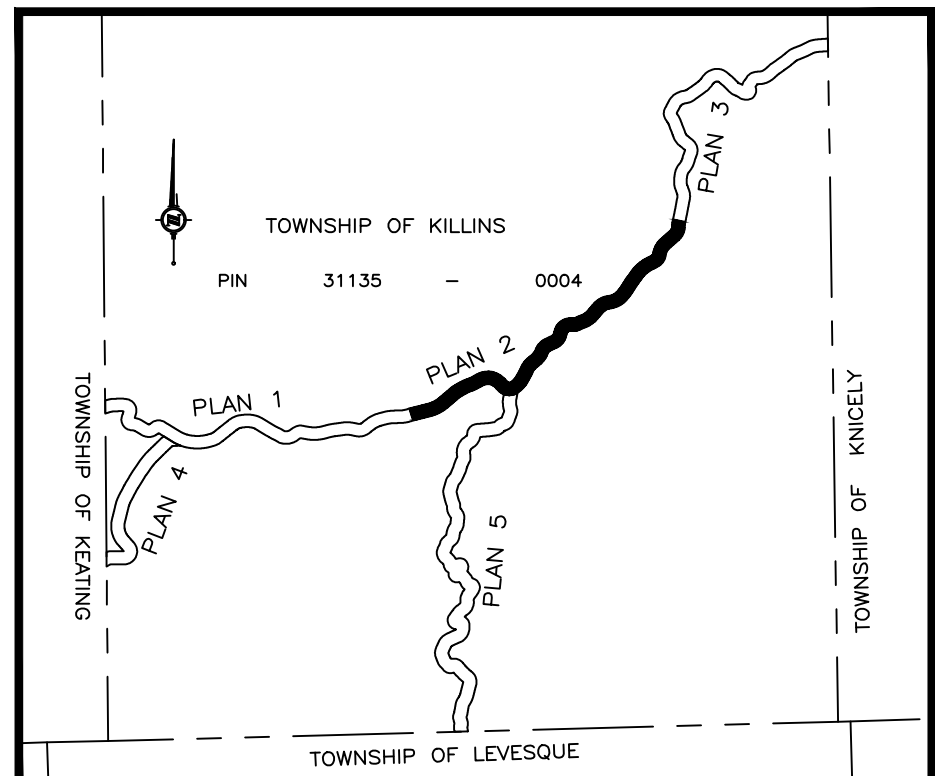
ROTATIONS APPLIED TO PLAN BEARINGS FOR BEARING COMPRESSIONS	
PLAN	ROTATION
P2	0°53'50" COUNTER CLOCKWISE

OBSERVED REFERENCE POINTS (ORP's) DERIVED FROM GPS OBSERVATIONS USING THE PRECISE POINT POSITIONING SERVICE AND ARE REFERRED TO UTM ZONE 16, NAD83 (CSRS)(2010).

COORDINATES COMPLY WITH THE RURAL ABSOLUTE ACCURACY PER 800.14(2) OF O. REG. 216/10

POINT ID	NORTHING	EASTING
A	5 343 646.02	636 901.84
B	5 343 707.70	639 147.93
C	5 346 219.94	642 442.70

COORDINATES CANNOT, IN THEMSELVES, BE USED TO RE-ESTABLISH CORNERS OR BOUNDARIES SHOWN ON THIS PLAN.



KEY PLAN

SCALE - 1:100,000

LEGEND

- DENOTES PLANTED SURVEY MONUMENT
- DENOTES FOUND SURVEY MONUMENT
- SB DENOTES STANDARD IRON BAR
- IS DENOTES IRON BAR
- SSB DENOTES SHORT STANDARD IRON BAR
- RPL DENOTES ROCK PLUG
- P1 DENOTES ORIGINAL SURVEY NOTES OF THE TOWNSHIP OF KILLINS
- P2 DENOTES PLAN OF MINING CLAIM SV480 & SV481

ALL PLANTED SURVEY MONUMENTS ARE (WITH) UNLESS OTHERWISE NOTED. ALL CURVES ARE NON-TANGENTIAL, UNLESS OTHERWISE NOTED.

NOTES

BEARINGS ARE GRID, DERIVED FROM OBSERVED REFERENCE POINTS A AND B, HAVING A BEARING OF N76°55'45"E BY REAL TIME KINEMATIC (RTK) OBSERVATIONS, UTM ZONE 16, NAD83 (CSRS)(2010).

DISTANCES ARE GROUND AND CAN BE CONVERTED TO GRID BY MULTIPLYING BY THE COMBINED SCALE FACTOR OF 0.999842

METRIC

DISTANCES AND COORDINATES SHOWN ON THIS PLAN ARE IN METRES AND CAN BE CONVERTED TO FEET BY DIVIDING BY 0.3048.

SURVEYOR'S CERTIFICATE

I CERTIFY THAT: 1. THIS SURVEY AND PLAN ARE CORRECT AND IN ACCORDANCE WITH THE SURVEYS ACT, THE SURVEYORS ACT AND THE LAND TITLES ACT AND THE REGULATIONS MADE UNDER THEM.

2. THE SURVEY WAS COMPLETED ON THE 8TH DAY OF AUGUST, 2019.

2019/10/08 DATE PETER de HAAN ONTARIO LAND SURVEYOR



1918 YONGE STREET, THUNDER BAY, ON P7E 6T9  
T: (807) 624-5160 F: (807) 624-5161 www.tbte.co

DRAWN BY: JGL CHECKED BY: PdeH DATED: 2019/09/15

FILED No.: File: C:\Users\ADMIN\Documents\ The Name: 0324.DWG PLAN: 2

EXPROPRIATION CERTIFICATE  
UPPER CANADA TRANSMISSION, INC. IN ACCORDANCE WITH SECTION 9 OF THE EXPROPRIATIONS ACT, R.S.O. 1990, c. 28, DOES HEREBY EXPROPRIATE AND TO EXPROPRIATE A LIMITED INTEREST IN THE LANDS AS DESCRIBED BELOW A TEMPORARY ROAD EASEMENT AND RIGHT-OF-WAY IN FAVOUR OF UPPER CANADA TRANSMISSION, INC. ITS OFFICERS, EMPLOYEES, AGENTS, CONTRACTORS, SUBCONTRACTORS, TENANTS, FRANCHISEES, LICENSEES, SUCCESSORS AND ASSIGNS IN, ON, OVER, ACROSS AND ALONG THAT PORTION OF THE LANDS DESIGNATED AS PARTS 1, 2 & 3 FOR INCLUDING ACCESS ROADS AND ANCILLARY FACILITIES AS APPROVED BY THE ONTARIO ENERGY BOARD AND SET OUT IN ORDER NO. EB-2019-0127, DATED SEPTEMBER 12, 2019.

THE EXPROPRIATING AUTHORITY  
UPPER CANADA TRANSMISSION, INC.

JENNIFER TOMARSH, PROJECT DIRECTOR  
I HAVE AUTHORITY TO BIND THE CORPORATION

DATE \_\_\_\_\_

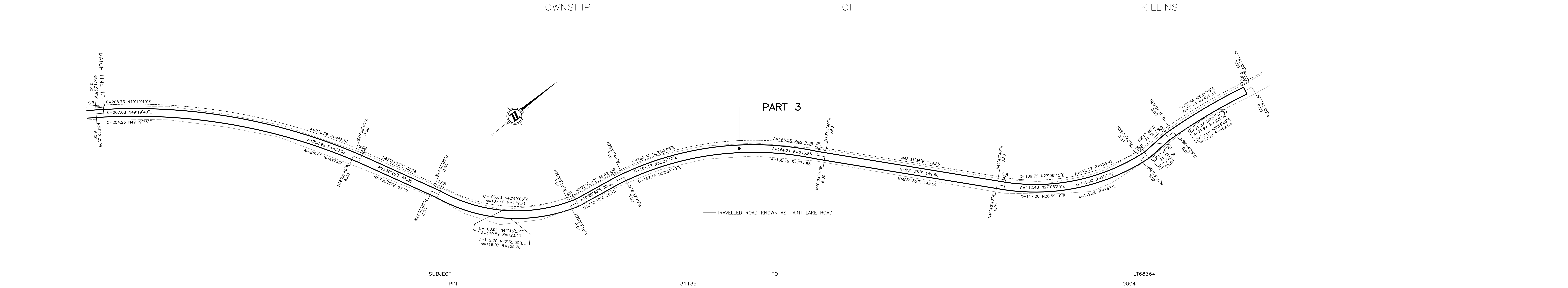
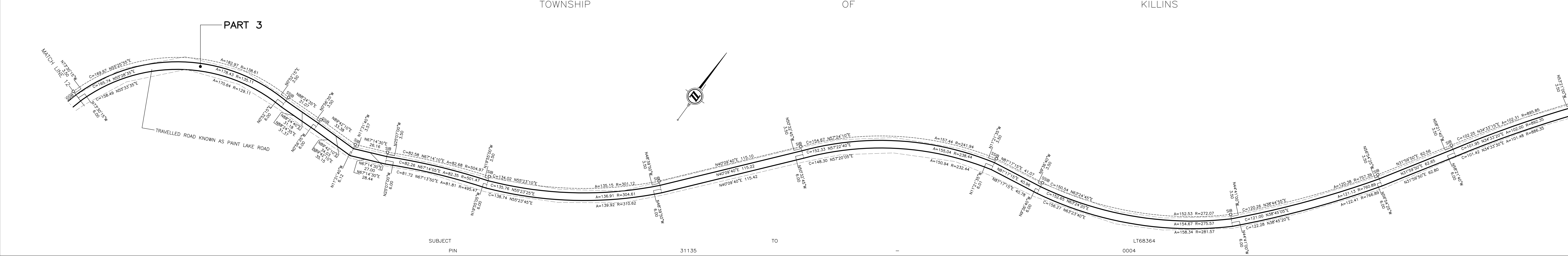
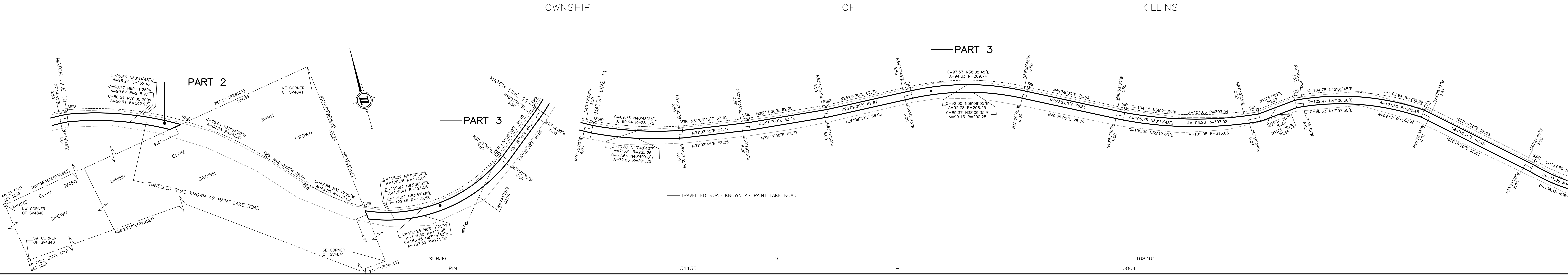
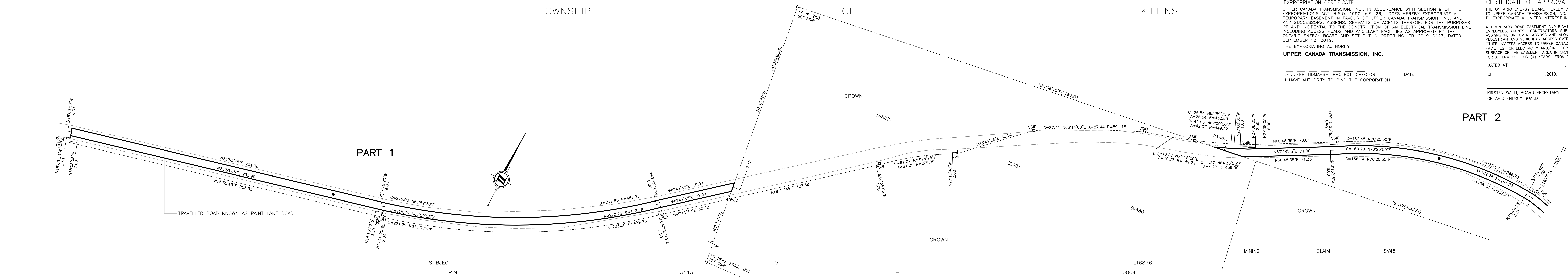
CERTIFICATE OF APPROVAL

THE ONTARIO ENERGY BOARD HEREBY CERTIFIES THAT APPROVAL WAS GIVEN TO UPPER CANADA TRANSMISSION, INC. ON THE 10TH DAY OF SEPTEMBER, 2019, TO EXPROPRIATE A LIMITED INTEREST IN THE LANDS AS DESCRIBED BELOW A TEMPORARY ROAD EASEMENT AND RIGHT-OF-WAY IN FAVOUR OF UPPER CANADA TRANSMISSION, INC. ITS OFFICERS, EMPLOYEES, AGENTS, CONTRACTORS, SUBCONTRACTORS, TENANTS, FRANCHISEES, LICENSEES, SUCCESSORS AND ASSIGNS IN, ON, OVER, ACROSS AND ALONG THAT PORTION OF THE LANDS DESIGNATED AS PARTS 1, 2 & 3 FOR INCLUDING ACCESS ROADS AND ANCILLARY FACILITIES AS APPROVED BY THE ONTARIO ENERGY BOARD AND SET OUT IN ORDER NO. EB-2019-0127, DATED SEPTEMBER 12, 2019.

DATE \_\_\_\_\_

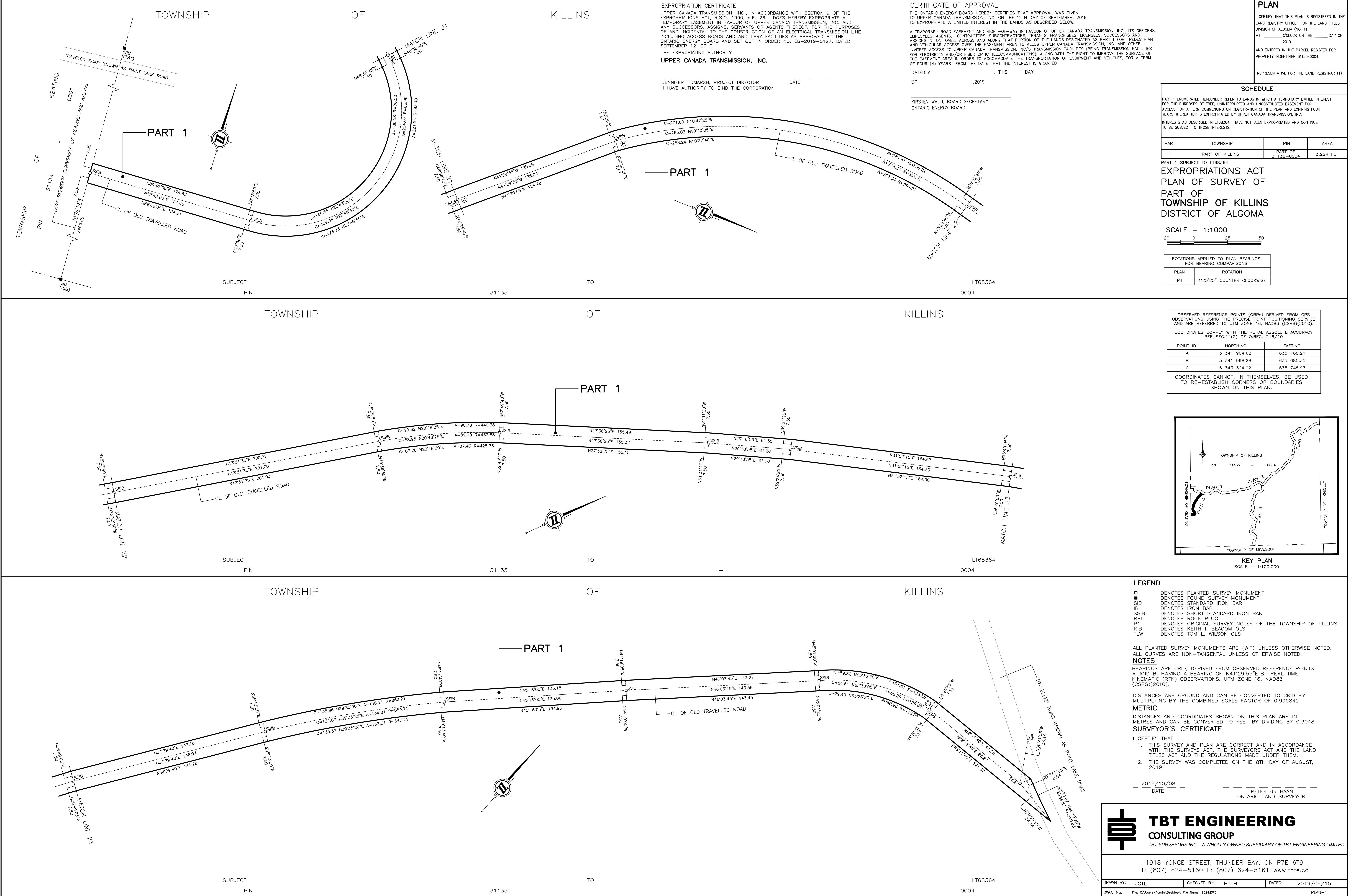
OF \_\_\_\_\_ 2019, \_\_\_\_\_ DAY

KIRSTEN WALLI BOARD SECRETARY  
ONTARIO ENERGY BOARD









EXPROPRIATION CERTIFICATE  
UPPER CANADA TRANSMISSION, INC., IN ACCORDANCE WITH SECTION 9 OF THE EXPROPRIATIONS ACT, R.S.O. 1990, c.E. 26, DOES HEREBY EXPROPRIATE A TEMPORARY EASEMENT IN FAVOUR OF UPPER CANADA TRANSMISSION, INC. AND ANY SUCCESSORS, ASSIGNS, SERVANTS OR AGENTS THEREOF, FOR THE PURPOSES OF AND INCIDENTAL TO THE CONSTRUCTION OF AN ELECTRICAL TRANSMISSION LINE INCLUDING ACCESS ROADS AND ANCILLARY FACILITIES AS APPROVED BY THE ONTARIO ENERGY BOARD AND SET OUT IN ORDER NO. EB-2019-0127, DATED SEPTEMBER 12, 2019.  
THE EXPROPRIATING AUTHORITY  
**UPPER CANADA TRANSMISSION, INC.**

JENNIFER TOMARSH, PROJECT DIRECTOR  
I HAVE AUTHORITY TO BIND THE CORPORATION

DATE

CERTIFICATE OF APPROVAL  
THE ONTARIO ENERGY BOARD HEREBY CERTIFIES THAT APPROVAL WAS GIVEN TO UPPER CANADA TRANSMISSION, INC. ON THE 12TH DAY OF SEPTEMBER, 2019, TO EXPROPRIATE A LIMITED INTEREST IN THE LANDS AS DESCRIBED BELOW:  
A TEMPORARY ROAD EASEMENT AND RIGHT-OF-WAY IN FAVOUR OF UPPER CANADA TRANSMISSION, INC. ITS OFFICERS, EMPLOYEES, AGENTS, CONTRACTORS, SUBCONTRACTORS, TENANTS, FRANCHISEES, LICENSEES, SUCCESSORS AND ASSIGNS IN, ON, OVER, ACROSS AND ALONG THAT PORTION OF THE LANDS DESIGNATED AS PART 1 FOR PEDESTRIAN AND VEHICULAR ACCESS OVER THE EASEMENT AREA TO ALLOW UPPER CANADA TRANSMISSION, INC. AND OTHER INVITEES ACCESS TO UPPER CANADA TRANSMISSION, INC.'S TRANSMISSION FACILITIES (BEING TRANSMISSION FACILITIES FOR ELECTRICITY AND/OR FIBER OPTIC TELECOMMUNICATIONS), ALONG WITH THE RIGHT TO IMPROVE THE SURFACE OF THE EASEMENT AREA IN ORDER TO ACCOMMODATE THE TRANSPORTATION OF EQUIPMENT AND VEHICLES, FOR A TERM OF FOUR (4) YEARS FROM THE DATE THAT THE INTEREST IS GRANTED

DATED AT \_\_\_\_\_, THIS DAY  
OF \_\_\_\_\_, 2019.

KIRSTEN WALLI, BOARD SECRETARY  
ONTARIO ENERGY BOARD

**PLAN**  
I CERTIFY THAT THIS PLAN IS REGISTERED IN THE LAND REGISTRY OFFICE FOR THE LAND TITLES DIVISION OF ALGOMA (NO. 1) AT \_\_\_\_\_ O'CLOCK ON THE \_\_\_\_\_ DAY OF \_\_\_\_\_ 2019.  
AND ENTERED IN THE PARCEL REGISTER FOR PROPERTY IDENTIFIER 31135-0004.  
REPRESENTATIVE FOR THE LAND REGISTRAR (1)

**SCHEDULE**

PART 1 ENUMERATED HEREUNDER REFER TO LANDS IN WHICH A TEMPORARY LIMITED INTEREST FOR THE PURPOSES OF FREE UNINTERRUPTED AND UNOBTSTRUCTED EASEMENT FOR ACCESS FOR A TERM COMMENCING ON REGISTRATION OF THE PLAN AND EXPIRING FOUR YEARS THEREAFTER IS EXPROPRIATED BY UPPER CANADA TRANSMISSION, INC.  
INTERESTS AS DESCRIBED IN LT68364 HAVE NOT BEEN EXPROPRIATED AND CONTINUE TO BE SUBJECT TO THOSE INTERESTS.

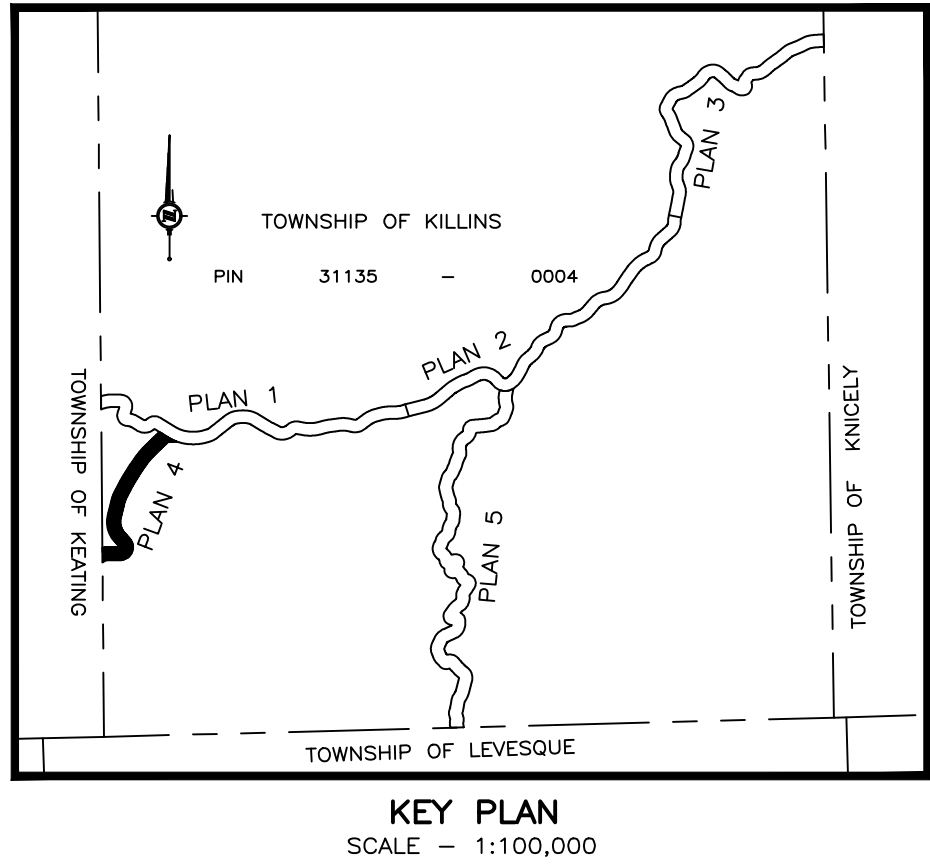
PART	TOWNSHIP	PIN	AREA
1	PART OF KILLINS	PART OF 31135-0004	3.224 ha

PART 1 SUBJECT TO LT68364  
**EXPROPRIATIONS ACT**  
**PLAN OF SURVEY OF**  
**PART OF**  
**TOWNSHIP OF KILLINS**  
**DISTRICT OF ALGOMA**

SCALE — 1:1000  
20 0 25 50

ROTATIONS APPLIED TO PLAN BEARINGS FOR BEARING COMPARISONS	
PLAN	ROTATION
P1	1°25'25" COUNTER CLOCKWISE

OBSERVED REFERENCE POINTS (ORP <sub>s</sub> ) DERIVED FROM GPS OBSERVATIONS USING THE PRECISE POINT POSITIONING SERVICE AND ARE REFERRED TO UTM ZONE 16, NAD83 (CSRS)(2010). COORDINATES COMPLY WITH THE RURAL ABSOLUTE ACCURACY PER SEC.14(2) OF O.REG. 216/10		
POINT ID	NORTHING	EASTING
A	5 341 904.62	635 168.21
B	5 341 998.28	635 085.35
C	5 343 324.92	635 748.97
COORDINATES CANNOT, IN THEMSELVES, BE USED TO RE-ESTABLISH CORNERS OR BOUNDARIES SHOWN ON THIS PLAN.		



**LEGEND**

- DENOTES PLANTED SURVEY MONUMENT
- DENOTES FOUND SURVEY MONUMENT
- SB DENOTES STANDARD IRON BAR
- IB DENOTES IRON BAR
- SSIB DENOTES SHORT STANDARD IRON BAR
- RPL DENOTES ROCK PLUG
- P1 DENOTES ORIGINAL SURVEY NOTES OF THE TOWNSHIP OF KILLINS
- KIB DENOTES KEITH I. BEACOM OLS
- TLW DENOTES TOM L. WILSON OLS

ALL PLANTED SURVEY MONUMENTS ARE (WIT) UNLESS OTHERWISE NOTED.  
ALL CURVES ARE NON-TANGENTIAL UNLESS OTHERWISE NOTED.

**NOTES**

BEARINGS ARE GRID, DERIVED FROM OBSERVED REFERENCE POINTS A AND B, HAVING A BEARING OF N41°29'55"E BY REAL TIME KINEMATIC (RTK) OBSERVATIONS, UTM ZONE 16, NAD83 (CSRS)(2010).

DISTANCES ARE GROUND AND CAN BE CONVERTED TO GRID BY MULTIPLYING BY THE COMBINED SCALE FACTOR OF 0.999842

**METRIC**

DISTANCES AND COORDINATES SHOWN ON THIS PLAN ARE IN METRES AND CAN BE CONVERTED TO FEET BY DIVIDING BY 0.3048.

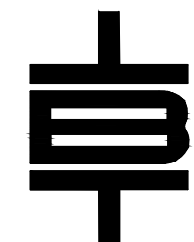
**SURVEYOR'S CERTIFICATE**

I CERTIFY THAT:

- THIS SURVEY AND PLAN ARE CORRECT AND IN ACCORDANCE WITH THE SURVEYOR'S ACT, THE SURVEYOR'S ACT AND THE LAND TITLES ACT AND THE REGULATIONS MADE UNDER THEM.
- THE SURVEY WAS COMPLETED ON THE 8TH DAY OF AUGUST, 2019.

2019/10/08  
DATE

PETER de HAAN  
ONTARIO LAND SURVEYOR



**TBT ENGINEERING**  
**CONSULTING GROUP**

TBT SURVEYORS INC. - A WHOLLY OWNED SUBSIDIARY OF TBT ENGINEERING LIMITED

1918 YONGE STREET, THUNDER BAY, ON P7E 6T9  
T: (807) 624-5160 F: (807) 624-5161 www.tbte.ca

DRAWN BY: JGTL CHECKED BY: PdeH DATED: 2019/09/15  
DWG. No.: File: C:\Users\Admin\Desktop\ File Name: 9524.DWG PLAN-4



