

**CERTIFICATE OF APPROVAL**

THE ONTARIO ENERGY BOARD HEREBY CERTIFIES THAT APPROVAL WAS GIVEN TO UPPER CANADA TRANSMISSION, INC. ON THE 12TH DAY OF SEPTEMBER, 2019. TO EXPROPRIATE A LIMITED INTEREST IN THE LANDS AS DESCRIBED BELOW:

FIRSTLY, A PERMANENT EASEMENT AND RIGHT-OF-WAY IN PERPETUITY IN FAVOUR OF UPPER CANADA TRANSMISSION, INC., ITS OFFICERS, EMPLOYEES, AGENTS, CONTRACTORS, SUBCONTRACTORS, TENANTS, FRANCHISEES, LICENSEES, SUCCESSORS AND ASSIGNS IN, ON, OVER, ACROSS, ALONG AND UNDER THAT PORTION OF THE PROPERTY MORE PARTICULARLY DESIGNATED AS PART 1 ON THIS PLAN WITH SUCH PERSONS, VEHICLES AND EQUIPMENT NECESSARY FOR THE PURPOSES OF ERECTING, CONSTRUCTING, REPLACING, RELOCATING, IMPROVING, ENLARGING, REMOVING, MAINTAINING, OPERATING AND UTILIZING, FROM TIME TO TIME, A LINE OF TRANSMISSION STRUCTURES OR POLES (WHICH MAY INCLUDE LATTICE OR TRUSS TOWERS OR STRUCTURES IN THE EASEMENT AREA), WITH SUCH STABILITY STRUCTURES, INCLUDING WITHOUT LIMITATION, WIRES, GUY WIRES, AND/OR CABLES (WHETHER ABOVE GROUND OR BURIED), FOR THE TRANSMISSION OF ELECTRICAL ENERGY, AND ALL NECESSARY AND PROPER FOUNDATIONS, ANCHORS, COMMUNICATION VAULTS, FOOTINGS, CROSS ARMS AND OTHER APPLIANCES, FACILITIES AND FIXTURES FOR USE IN CONNECTION THEREWITH (WHICH MAY INCLUDE FIBER OPTIC CABLES AND TELECOMMUNICATIONS FIBER USED FOR PURPOSES RELATING TO THE TRANSMISSION OF ELECTRICITY AND FOR ANY OTHER LAWFUL PURPOSE) (COLLECTIVELY, THE TRANSMISSION FACILITIES) IN, ON, OVER, ACROSS, ALONG AND UNDER THE EASEMENT AREA; TOGETHER WITH THE RIGHT OF INGRESS TO AND EGRESS FROM THE TRANSMISSION FACILITIES OVER AND ALONG THE REMAINDER OF THE PROPERTY.

DATED AT \_\_\_\_\_, THIS \_\_\_\_\_ DAY OF \_\_\_\_\_, 2019.

KIRSTEN WALLI, BOARD SECRETARY  
ONTARIO ENERGY BOARD

OBSERVED REFERENCE POINTS (ORPs) DERIVED FROM GPS OBSERVATIONS USING THE PRECISE POINT POSITIONING SERVICE AND ARE REFERRED TO UTM ZONE 16, NAD83 (CSRS)(2010).  
COORDINATES COMPLY WITH THE URBAN ABSOLUTE ACCURACY PER SEC.14(2) OF O.REG. 216/10

POINT ID	NORTHING	EASTING
A	5 380 782.25	358 210.58
B	5 381 065.97	358 211.47
C	5 381 009.39	358 211.28

COORDINATES CANNOT, IN THEMSELVES, BE USED TO RE-ESTABLISH CORNERS OR BOUNDARIES SHOWN ON THIS PLAN.

**EXPROPRIATION CERTIFICATE**

UPPER CANADA TRANSMISSION, INC., IN ACCORDANCE WITH SECTION 9 OF THE EXPROPRIATIONS ACT, R.S.O. 1990, c.E. 26, DOES HEREBY EXPROPRIATE A PERMANENT EASEMENT IN FAVOUR OF UPPER CANADA TRANSMISSION, INC. AND ANY SUCCESSORS, TO THE CONSTRUCTION OF AN ELECTRICAL TRANSMISSION LINE INCLUDING ACCESS ROADS AND ANCILLARY FACILITIES AS APPROVED BY THE ONTARIO ENERGY BOARD AND SET IN ORDER NO. EB-2019-0127, DATED SEPTEMBER 12, 2019.

THE EXPROPRIATING AUTHORITY

**UPPER CANADA TRANSMISSION, INC**

JENNIFER TIDMARSH, PROJECT DIRECTOR  
I HAVE AUTHORITY TO BIND THE CORPORATION

DATE \_\_\_\_\_

**PLAN**

I CERTIFY THAT THIS PLAN IS REGISTERED IN THE LAND REGISTRY OFFICE FOR THE REGISTRY DIVISION OF THUNDER BAY (NO. 55) AT \_\_\_\_\_ O'CLOCK ON THE \_\_\_\_\_ DAY OF \_\_\_\_\_ 2019. AND ENTERED IN THE PARCEL REGISTER FOR PROPERTY IDENTIFIER 62495-0025

REPRESENTATIVE FOR THE LAND REGISTRAR (55)

**SCHEDULE**

PART 1 ENUMERATED HEREUNDER REFER TO LANDS IN WHICH A PERMANENT EASEMENT FOR A TRANSMISSION LINE IS EXPROPRIATED BY UPPER CANADA TRANSMISSION, INC.

PART	MINING LOCATION	PIN	AREA
1	PART OF MINING LOCATION K8	PART OF 62495-0025	0.2142 ha

**EXPROPRIATIONS ACT  
PLAN OF SURVEY OF  
PART OF MINING LOCATION K8  
TOWNSHIP OF MacGREGOR  
MUNICIPALITY OF SHUNIAH  
DISTRICT OF THUNDER BAY**

SCALE - 1:2000



**NOTES**

BEARINGS ARE GRID, DERIVED FROM OBSERVED REFERENCE POINTS A AND B, HAVING A BEARING OF N00°10'40"E BY REAL TIME KINEMATIC (RTK) OBSERVATIONS, UTM ZONE 16, NAD83 (CSRS)(2010).

DISTANCES ARE GROUND AND CAN BE CONVERTED TO GRID BY MULTIPLYING BY THE COMBINED SCALE FACTOR OF 0.999805

UPPER CANADA TRANSMISSION INC. OPERATING AS NEXTBRIDGE INFRASTRUCTURE

**LEGEND**

- DENOTES PLANTED SURVEY MONUMENT
- DENOTES FOUND SURVEY MONUMENT
- SIB DENOTES STANDARD IRON BAR
- IB DENOTES IRON BAR
- SSIB DENOTES SHORT STANDARD IRON BAR
- RPL DENOTES ROCK PLUG
- P&G DENOTES PHILLIPS & GAVIN, OLS's

**METRIC**

DISTANCES AND COORDINATES SHOWN ON THIS PLAN ARE IN METRES AND CAN BE CONVERTED TO FEET BY DIVIDING BY 0.3048.

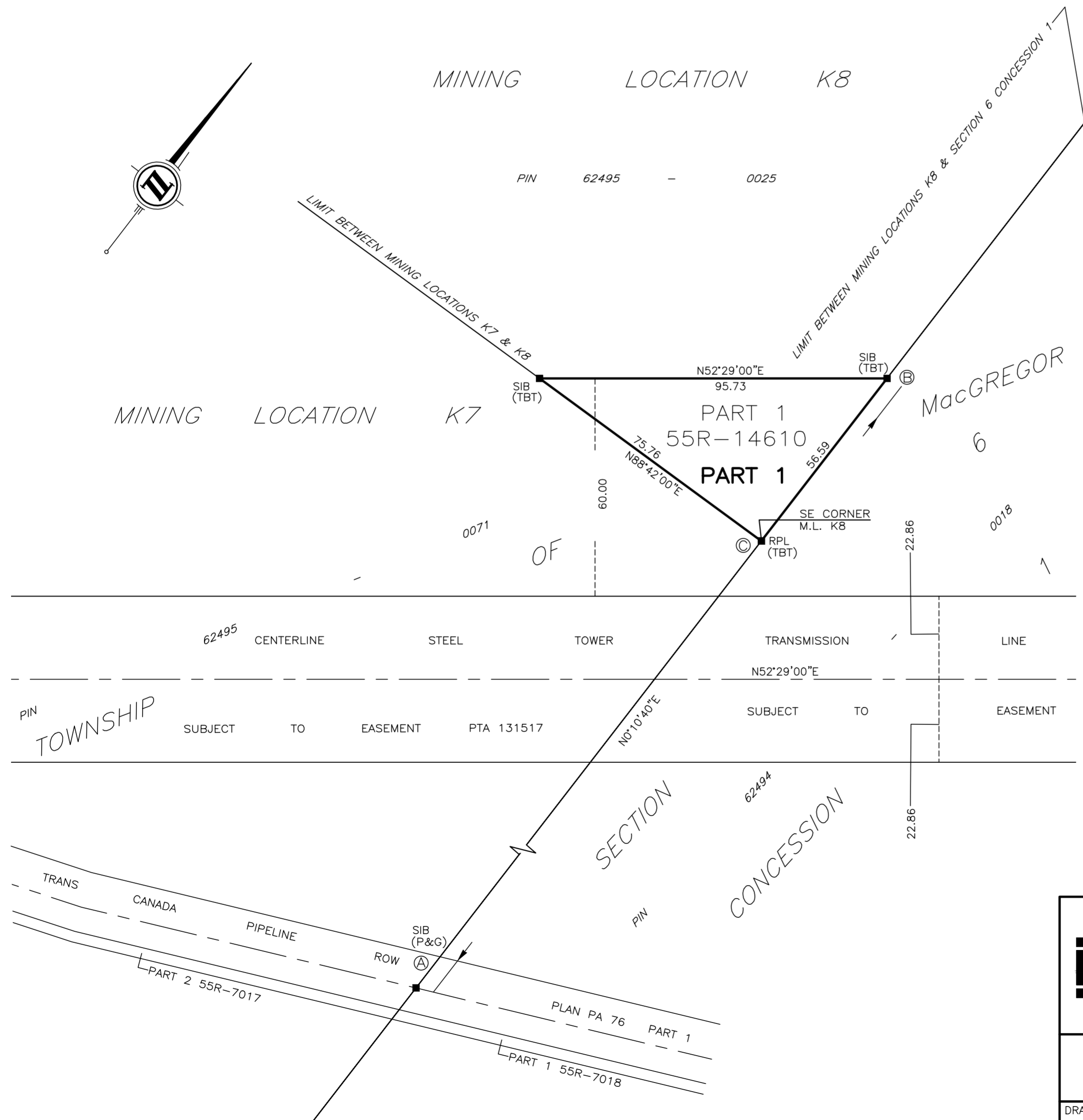
**SURVEYOR'S CERTIFICATE**

I CERTIFY THAT:

- THIS SURVEY AND PLAN ARE CORRECT AND IN ACCORDANCE WITH THE SURVEYS ACT, THE SURVEYORS ACT AND THE REGISTRY ACT AND THE REGULATIONS MADE UNDER THEM.
- THE SURVEY WAS COMPLETED ON THE 1ST DAY OF NOVEMBER, 2018.

2019/10/8  
DATE

PETER de HAAN  
ONTARIO LAND SURVEYOR



**TBT ENGINEERING**  
**CONSULTING GROUP**  
*TBT SURVEYORS INC. - A WHOLLY OWNED SUBSIDIARY OF TBT ENGINEERING LIMITED*

1918 YONGE STREET, THUNDER BAY, ON P7E 6T9  
T: (807) 624-5160 F: (807) 624-5161 www.tbte.ca

DRAWN BY: JGTL	CHECKED BY: PdeH	DATED: 2019/10/8
DWG. No.: File: Y:\Projects\2018\18-568 Legal EWT Nextbridge\TBT AutoCAD\REF PLANS\ File Name: EWT 2026.dwg		