

OBSERVED REFERENCE POINTS (ORPs) DERIVED FROM GPS OBSERVATIONS USING THE PRECISE POINT POSITIONING SERVICE AND ARE REFERRED TO UTM ZONE 16, NAD83 (CSRS)(2010).

COORDINATES COMPLY WITH THE URBAN ABSOLUTE ACCURACY PER SEC.14(2) OF O.REG. 216/10

POINT ID	NORTHING	EASTING
A	5 416 161.89	388 750.71
B	5 416 341.93	389 276.88
C	5 416 247.51	389 000.90

COORDINATES CANNOT, IN THEMSELVES, BE USED TO RE-ESTABLISH CORNERS OR BOUNDARIES SHOWN ON THIS PLAN.

EXPROPRIATION CERTIFICATE

UPPER CANADA TRANSMISSION, INC., IN ACCORDANCE WITH SECTION 9 OF THE EXPROPRIATIONS ACT, R.S.O. 1990, c.E. 26, DOES HEREBY EXPROPRIATE A PERMANENT EASEMENT IN FAVOUR OF UPPER CANADA TRANSMISSION, INC. AND ANY SUCCESSORS, TO THE CONSTRUCTION OF AN ELECTRICAL TRANSMISSION LINE INCLUDING ACCESS ROADS AND ANCILLARY FACILITIES AS APPROVED BY THE ONTARIO ENERGY BOARD AND SET IN ORDER NO. EB-2019-0127, DATED SEPTEMBER 12, 2019.

THE EXPROPRIATING AUTHORITY
UPPER CANADA TRANSMISSION, INC

JENNIFER TIDMARSH, PROJECT DIRECTOR
I HAVE AUTHORITY TO BIND THE CORPORATION

DATE _____

CERTIFICATE OF APPROVAL

THE ONTARIO ENERGY BOARD HEREBY CERTIFIES THAT APPROVAL WAS GIVEN TO UPPER CANADA TRANSMISSION, INC. ON THE 12TH DAY OF SEPTEMBER, 2019, TO EXPROPRIATE A LIMITED INTEREST IN THE LANDS AS DESCRIBED BELOW:

FIRSTLY, A PERMANENT EASEMENT AND RIGHT-OF-WAY IN PERPETUITY IN FAVOUR OF UPPER CANADA TRANSMISSION, INC., ITS OFFICERS, EMPLOYEES, AGENTS, CONTRACTORS, SUBCONTRACTORS, TENANTS, FRANCHISEES, LICENSEES, SUCCESSORS AND ASSIGNS IN, ON, OVER, ACROSS, ALONG AND UNDER THAT PORTION OF THE PROPERTY MORE PARTICULARLY DESIGNATED AS PART 1 ON THIS PLAN WITH SUCH PERSONS, VEHICLES AND EQUIPMENT NECESSARY FOR THE PURPOSES OF ERECTING, CONSTRUCTING, REPLACING, RELOCATING, IMPROVING, ENLARGING, REMOVING, MAINTAINING, OPERATING AND UTILIZING, FROM TIME TO TIME, A LINE OF TRANSMISSION STRUCTURES OR POLES (WHICH MAY INCLUDE LATTICE OR TRUSS TOWERS OR STRUCTURES IN THE EASEMENT AREA), WITH SUCH STABILITY STRUCTURES, INCLUDING WITHOUT LIMITATION, WIRES, GUY WIRES, AND/OR CABLES (WHETHER ABOVE GROUND OR BURIED), FOR THE TRANSMISSION OF ELECTRICAL ENERGY, AND ALL NECESSARY AND PROPER FOUNDATIONS, ANCHORS, COMMUNICATION VAULTS, FOOTINGS, CROSS ARMS AND OTHER APPLIANCES, FACILITIES AND FIXTURES FOR USE IN CONNECTION THEREWITH (WHICH MAY INCLUDE FIBER OPTIC CABLES AND TELECOMMUNICATIONS FIBER USED FOR PURPOSES RELATING TO THE TRANSMISSION OF ELECTRICITY AND FOR ANY OTHER LAWFUL PURPOSE) (COLLECTIVELY, THE TRANSMISSION FACILITIES) IN, ON, OVER, ACROSS, ALONG AND UNDER THE EASEMENT AREA; TOGETHER WITH THE RIGHT OF INGRESS TO AND EGRESS FROM THE TRANSMISSION FACILITIES OVER AND ALONG THE REMAINDER OF THE PROPERTY.

DATED AT _____, THIS _____ DAY OF _____, 2019.

KIRSTEN WALLI, BOARD SECRETARY
ONTARIO ENERGY BOARD

PLAN

I CERTIFY THAT THIS PLAN IS REGISTERED IN THE LAND REGISTRY OFFICE FOR THE LAND TITLES DIVISION OF THUNDER BAY (NO. 55) AT _____ O'CLOCK ON THE _____ DAY OF _____, 2019, AND ENTERED IN THE PARCEL REGISTER FOR PROPERTY IDENTIFIER 62483-0025

REPRESENTATIVE FOR THE LAND REGISTRAR (55)

SCHEDULE

PART 1 ENUMERATED HEREUNDER REFER TO LANDS IN WHICH A PERMANENT EASEMENT FOR A TRANSMISSION LINE IS EXPROPRIATED BY UPPER CANADA TRANSMISSION, INC.

PART	LOT	CONCESSION	PIN	AREA
1	PART OF WEST HALF 8	CONCESSION 2	PART OF 62483-0025	4.1939 ha

**EXPROPRIATIONS ACT
PLAN OF SURVEY OF
PART OF WEST HALF LOT 8
CONCESSION 2
TOWNSHIP OF STIRLING
DISTRICT OF THUNDER BAY**

SCALE - 1:4000



NOTES

BEARINGS ARE GRID, DERIVED FROM OBSERVED REFERENCE POINTS A AND B, HAVING A BEARING OF N01°04'15"E BY REAL TIME KINEMATIC (RTK) OBSERVATIONS, UTM ZONE 16, NAD83 (CSRS)(2010).

DISTANCES ARE GROUND AND CAN BE CONVERTED TO GRID BY MULTIPLYING BY THE COMBINED SCALE FACTOR OF 0.999711

UPPER CANADA TRANSMISSION INC. OPERATING AS NEXTBRIDGE INFRASTRUCTURE

LEGEND

- DENOTES PLANTED SURVEY MONUMENT
- DENOTES FOUND SURVEY MONUMENT
- SIB DENOTES STANDARD IRON BAR
- IB DENOTES IRON BAR
- SSIB DENOTES SHORT STANDARD IRON BAR
- RPL DENOTES ROCK PLUG
- P1 DENOTES 55R-14608

METRIC

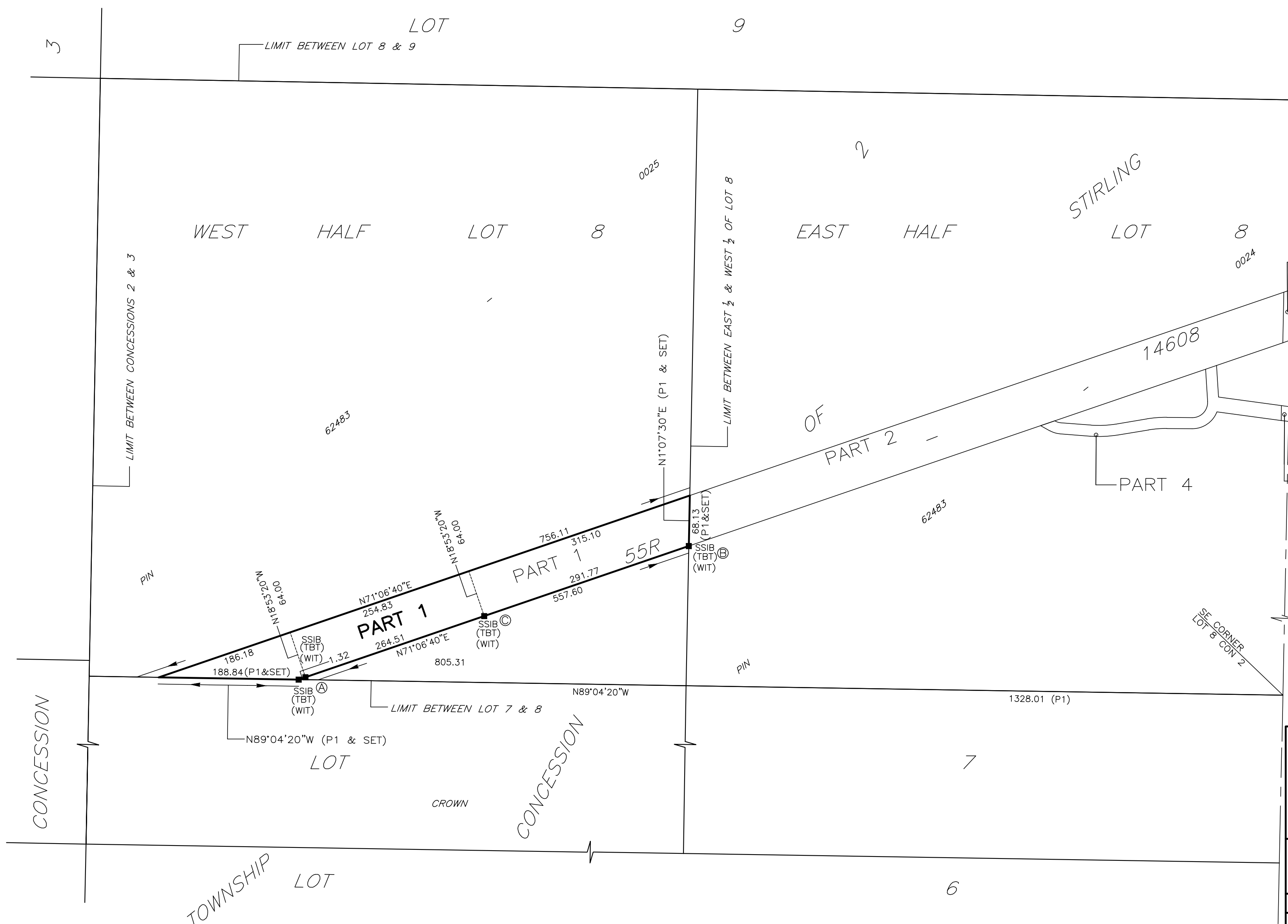
DISTANCES AND COORDINATES SHOWN ON THIS PLAN ARE IN METRES AND CAN BE CONVERTED TO FEET BY DIVIDING BY 0.3048.

SURVEYOR'S CERTIFICATE

- I CERTIFY THAT:
- THIS SURVEY AND PLAN ARE CORRECT AND IN ACCORDANCE WITH THE SURVEYS ACT, THE SURVEYORS ACT AND THE LAND TITLES ACT AND THE REGULATIONS MADE UNDER THEM.
 - THE SURVEY WAS COMPLETED ON THE 20TH DAY OF NOVEMBER, 2018.

2019/10/8
DATE

PETER de HAAN
ONTARIO LAND SURVEYOR



TBT ENGINEERING CONSULTING GROUP
TBT SURVEYORS INC. - A WHOLLY OWNED SUBSIDIARY OF TBT ENGINEERING LIMITED

1918 YONGE STREET, THUNDER BAY, ON P7E 6T9
T: (807) 624-5160 F: (807) 624-5161 www.tbte.ca

DRAWN BY: JGTL	CHECKED BY: PdeH	DATED: 2019/10/8
DWG. No.: File: Y:\Projects\2018\18-568 Legal EWT Nextbridge\TBT AutoCAD\REF PLANS\ File Name: EWT 5247.dwg		