

EXPROPRIATION CERTIFICATE

UPPER CANADA TRANSMISSION, INC., IN ACCORDANCE WITH SECTION 9 OF THE EXPROPRIATIONS ACT, R.S.O. 1990, c.E. 26, DOES HEREBY EXPROPRIATE A TEMPORARY EASEMENT IN FAVOUR OF UPPER CANADA TRANSMISSION, INC. AND ANY SUCCESSORS, ASSIGNS, SERVANTS OR AGENTS THEREOF, FOR THE PURPOSES OF AND INCIDENTAL TO THE CONSTRUCTION OF AN ELECTRICAL TRANSMISSION LINE INCLUDING ACCESS ROADS AND ANCILLARY FACILITIES AS APPROVED BY THE ONTARIO ENERGY BOARD AND SET OUT IN ORDER NO. EB-2019-0127, DATED, SEPTEMBER 12, 2019.

THE EXPROPRIATING AUTHORITY
UPPER CANADA TRANSMISSION, INC.

JENNIFER TIDMARSH, PROJECT DIRECTOR DATE
 I HAVE AUTHORITY TO BIND THE CORPORATION

PLAN

I CERTIFY THAT THIS PLAN IS REGISTERED IN THE LAND REGISTRY OFFICE FOR THE LAND TITLES DIVISION OF THUNDER BAY (NO. 55) AT _____ O'CLOCK ON THE _____ DAY OF _____ 2019.
 AND ENTERED IN THE PARCEL REGISTRAR FOR PROPERTY IDENTIFIER 62454-0005
 REPRESENTATIVE FOR THE LAND REGISTRAR (55)

SCHEDULE

PART 1 ENUMERATED HEREUNDER REFERS TO LAND IN WHICH A TEMPORARY LIMITED INTEREST FOR THE PURPOSES OF FREE, UNINTERRUPTED AND UNOBSTRUCTED EASEMENT FOR ACCESS FOR A TERM COMMENCING ON REGISTRATION OF THE PLAN AND EXPIRING SEVEN YEARS THEREAFTER IS EXPROPRIATED BY UPPER CANADA TRANSMISSION, INC.

PART	MINING CLAIM	MINING LOCATION	PIN	AREA
1	PART OF TB 3731	PART OF C 47	PART OF 62454-0005	0.641 ha

**EXPROPRIATIONS ACT
 PLAN OF SURVEY OF
 PART OF MINING CLAIM TB 3731
 BEING
 PART OF MINING LOCATION C 47
 TOWNSHIP OF WALSH
 DISTRICT OF THUNDER BAY**

SCALE - 1:1000



NOTES

BEARINGS ARE GRID, DERIVED FROM OBSERVED REFERENCE POINTS A AND B, HAVING A BEARING OF N89°12'50"E BY REAL TIME KINEMATIC (RTK) OBSERVATIONS, UTM ZONE 16, NAD83 (CSRS)(2010).

DISTANCES ARE GROUND AND CAN BE CONVERTED TO GRID BY MULTIPLYING BY THE COMBINED SCALE FACTOR OF 0.999577.

ALL FOUND SURVEY MONUMENTS ARE SSIB(TBT)(WIT) UNLESS OTHERWISE NOTED.

UPPER CANADA TRANSMISSION INC. OPERATING AS NEXTBRIDGE INFRASTRUCTURE

LEGEND

- DENOTES PLANTED SURVEY MONUMENT
- DENOTES FOUND SURVEY MONUMENT
- SSIB DENOTES STANDARD IRON BAR
- IB DENOTES IRON BAR
- SSIB DENOTES SHORT STANDARD IRON BAR
- RPL DENOTES ROCK PLUG
- WIT DENOTES WITNESS
- 458 DENOTES S.E. FLOOR, O.L.S.
- OU DENOTES ORIGIN UNKNOWN
- SSR-14628 DENOTES SSR-14628
- R DENOTES RADIUS
- A DENOTES ARC
- C DENOTES CHORD
- PIN DENOTES PROPERTY IDENTIFICATION NUMBER

METRIC

DISTANCES AND COORDINATES SHOWN ON THIS PLAN ARE IN METRES AND CAN BE CONVERTED TO FEET BY DIVIDING BY 0.3048.

SURVEYOR'S CERTIFICATE

- I CERTIFY THAT:
- THIS SURVEY AND PLAN ARE CORRECT AND IN ACCORDANCE WITH THE SURVEYS ACT, THE SURVEYORS ACT AND THE LAND TITLES ACT AND THE REGULATIONS MADE UNDER THEM.
 - THE SURVEY WAS COMPLETED ON THE 20th DAY OF JULY, 2019.

2019/10/08 DATE PETER de HAAN ONTARIO LAND SURVEYOR

CERTIFICATE OF APPROVAL

THE ONTARIO ENERGY BOARD HEREBY CERTIFIES THAT APPROVAL WAS GIVEN TO UPPER CANADA TRANSMISSION, INC. ON THE 12TH DAY OF SEPTEMBER, 2019, TO EXPROPRIATE A LIMITED INTEREST IN THE LANDS AS DESCRIBED BELOW:

A TEMPORARY ROAD EASEMENT AND RIGHT-OF-WAY IN FAVOUR OF UPPER CANADA TRANSMISSION, INC., ITS OFFICERS, EMPLOYEES, AGENTS, CONTRACTORS, SUBCONTRACTORS, TENANTS, FRANCHISEES, LICENSEES, SUCCESSORS AND ASSIGNS IN, ON, OVER, ACROSS AND ALONG THAT PORTION OF THE LANDS DESIGNATED AS PART 1 FOR PEDESTRIAN AND VEHICULAR ACCESS OVER THE EASEMENT AREA TO ALLOW UPPER CANADA TRANSMISSION, INC. AND OTHER INVITEES ACCESS TO UPPER CANADA TRANSMISSION, INC.'S TRANSMISSION FACILITIES (BEING TRANSMISSION FACILITIES FOR ELECTRICITY AND/OR FIBER OPTIC TELECOMMUNICATIONS), ALONG WITH THE RIGHT TO IMPROVE THE SURFACE OF THE EASEMENT AREA IN ORDER TO ACCOMMODATE THE TRANSPORTATION OF EQUIPMENT AND VEHICLES, FOR A TERM OF SEVEN (7) YEARS FROM THE DATE THAT THE INTEREST IS GRANTED

DATED AT _____, THIS DAY OF _____, 2019.

KIRSTEN WALLI, BOARD SECRETARY
 ONTARIO ENERGY BOARD

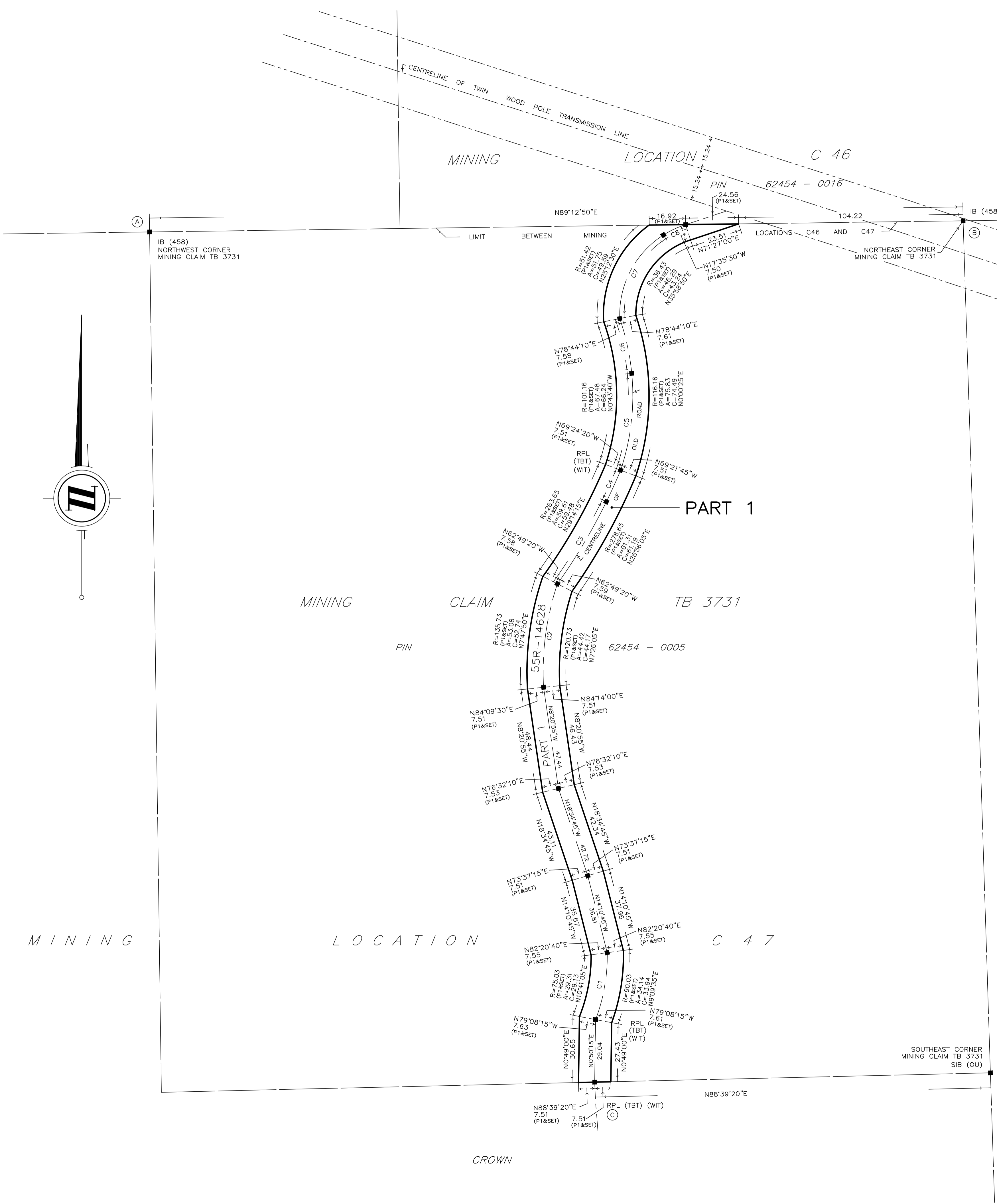
CURVE TABLE

CURVE	RADIUS (P1&SET)	ARC	CHORD	BEARING
C1	82.41	31.73	31.53	N9°50'40"E
C2	128.24	48.75	48.45	N7°37'40"E
C3	271.15	44.38	44.33	N30°47'15"E
C4	271.15	16.08	16.08	N24°24'00"E
C5	108.67	45.56	45.23	N6°31'25"E
C6	108.67	26.09	26.02	N12°21'50"W
C7	43.91	45.82	43.77	N27°34'55"E
C8	43.91	11.44	11.41	N64°56'30"E

OBSERVED REFERENCE POINTS (ORPs) DERIVED FROM GPS OBSERVATIONS USING THE PRECISE POINT POSITIONING SERVICE AND ARE REFERRED TO UTM ZONE 16, NAD83 (CSRS)(2010). COORDINATES COMPLY WITH THE URBAN ABSOLUTE ACCURACY PER SEC.14(2) OF O.REG. 216/10

POINT ID	NORTHING	EASTING
A	5406532.51	522844.47
B	5406537.69	523221.92
C	5406138.13	523050.98

COORDINATES CANNOT, IN THEMSELVES, BE USED TO RE-ESTABLISH CORNERS OR BOUNDARIES SHOWN ON THIS PLAN.



TBT ENGINEERING CONSULTING GROUP
 TBT SURVEYORS INC. - A WHOLLY OWNED SUBSIDIARY OF TBT ENGINEERING LIMITED

1918 YONGE STREET, THUNDER BAY, ON P7E 6T9
 T: (807) 624-5160 F: (807) 624-5161 www.tbte.ca