

CERTIFICATE OF APPROVAL

THE ONTARIO ENERGY BOARD HEREBY CERTIFIES THAT APPROVAL WAS GIVEN TO UPPER CANADA TRANSMISSION, INC. ON THE 12TH DAY OF SEPTEMBER, 2019, TO EXPROPRIATE A LIMITED INTEREST IN THE LANDS AS DESCRIBED BELOW:

A TEMPORARY ROAD EASEMENT AND RIGHT-OF-WAY IN FAVOUR OF UPPER CANADA TRANSMISSION, INC. ITS OFFICERS, EMPLOYEES, AGENTS, CONTRACTORS, SUBCONTRACTORS, TENANTS, FRANCHISEES, LICENSEES, SUCCESSORS AND ASSIGNS IN, ON, OVER, ACROSS AND ALONG THAT PORTION OF THE LANDS DESIGNATED AS PARTS 1, 2 AND 3 FOR PEDESTRIAN AND VEHICULAR ACCESS OVER THE EASEMENT AREA TO ALLOW UPPER CANADA TRANSMISSION, INC. AND OTHER INVITEES ACCESS TO UPPER CANADA TRANSMISSION, INC.'S TRANSMISSION FACILITIES (BEING TRANSMISSION FACILITIES FOR ELECTRICITY AND/OR FIBER OPTIC TELECOMMUNICATIONS), ALONG WITH THE RIGHT TO IMPROVE THE SURFACE OF THE EASEMENT AREA IN ORDER TO ACCOMMODATE THE TRANSPORTATION OF EQUIPMENT AND VEHICLES, FOR A TERM OF SEVEN (7) YEARS FROM THE DATE THAT THE INTEREST IS GRANTED

DATED AT \_\_\_\_\_, THIS \_\_\_\_\_ DAY OF \_\_\_\_\_, 2019.

KIRSTEN WALLI, BOARD SECRETARY  
ONTARIO ENERGY BOARD

PLAN

I CERTIFY THAT THIS PLAN IS REGISTERED IN THE LAND REGISTRY OFFICE FOR THE LAND TITLES DIVISION OF ALGOMA (NO. 1) AT \_\_\_\_\_ O'CLOCK ON THE \_\_\_\_\_ DAY OF \_\_\_\_\_ 2019, AND ENTERED IN THE PARCEL REGISTER FOR PROPERTY IDENTIFIER 31176 - 0001. REPRESENTATIVE FOR THE LAND REGISTRAR (SS)

SCHEDULE

PART 2 ENUMERATED HEREUNDER REFER TO LANDS IN WHICH A PERMANENT EASEMENT FOR FREE, UNINTERRUPTED AND UNOBSTRUCTED ACCESS IS EXPROPRIATED BY UPPER CANADA TRANSMISSION, INC.  
PART 1 AND 3 ENUMERATED HEREUNDER REFER TO LANDS IN WHICH A TEMPORARY LIMITED INTEREST FOR THE PURPOSES OF FREE, UNINTERRUPTED AND UNOBSTRUCTED EASEMENT FOR ACCESS FOR A TERM COMMENCING ON REGISTRATION OF THE PLAN AND EXPIRING SEVEN YEARS HEREAFTER IS EXPROPRIATED BY UPPER CANADA TRANSMISSION, INC.  
INTERESTS AS DESCRIBED IN L188564 HAVE NOT BEEN EXPROPRIATED AND CONTINUE TO BE SUBJECT TO THOSE INTERESTS.

Table with 4 columns: PART, TOWNSHIP, PIN, AREA. Rows 1, 2, 3.

EXPROPRIATIONS ACT  
PLAN OF SURVEY OF  
PART OF THE TOWNSHIP OF NAVEAU  
NOW IN THE  
MUNICIPALITY OF WAWA  
DISTRICT OF ALGOMA

SCALE = 1:3000

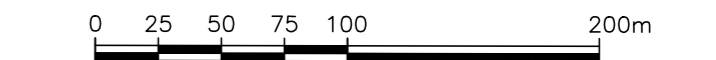


Table with 2 columns: PLAN, ROTATION. Row 1: P1, 1'44'25" COUNTER CLOCKWISE.

Table with 3 columns: POINT ID, NORTHING, EASTING. Rows A, B, C.

EXPROPRIATION CERTIFICATE  
UPPER CANADA TRANSMISSION, INC., IN ACCORDANCE WITH SECTION 9 OF THE EXPROPRIATIONS ACT, R.S.O. 1990, C.E. 26, DOES HEREBY EXPROPRIATE A TEMPORARY EASEMENT IN FAVOUR OF UPPER CANADA TRANSMISSION, INC. AND ANY SUCCESSORS, ASSIGNS, SERVANTS OR AGENTS THEREOF FOR THE PURPOSES OF AND INCIDENTAL TO THE CONSTRUCTION OF AN ELECTRICAL TRANSMISSION LINE INCLUDING ACCESS ROADS AND ANCILLARY FACILITIES AS APPROVED BY THE ONTARIO ENERGY BOARD AND SET OUT IN ORDER NO. EB-2019-0127, DATED SEPTEMBER 12, 2019.

THE EXPROPRIATING AUTHORITY  
UPPER CANADA TRANSMISSION, INC.

JENNIFER TIDMARSH, PROJECT DIRECTOR DATE \_\_\_\_\_  
I HAVE AUTHORITY TO BIND THE CORPORATION

- LEGEND
D DENOTES PLANTED SURVEY MONUMENT
SIB DENOTES FOUND SURVEY MONUMENT
SIB DENOTES STANDARD IRON BAR
SIB DENOTES IRON BAR
SSIB DENOTES SHORT STANDARD IRON BAR
RPL DENOTES ROCK PLUG
P1 DENOTES PLAN AP-309

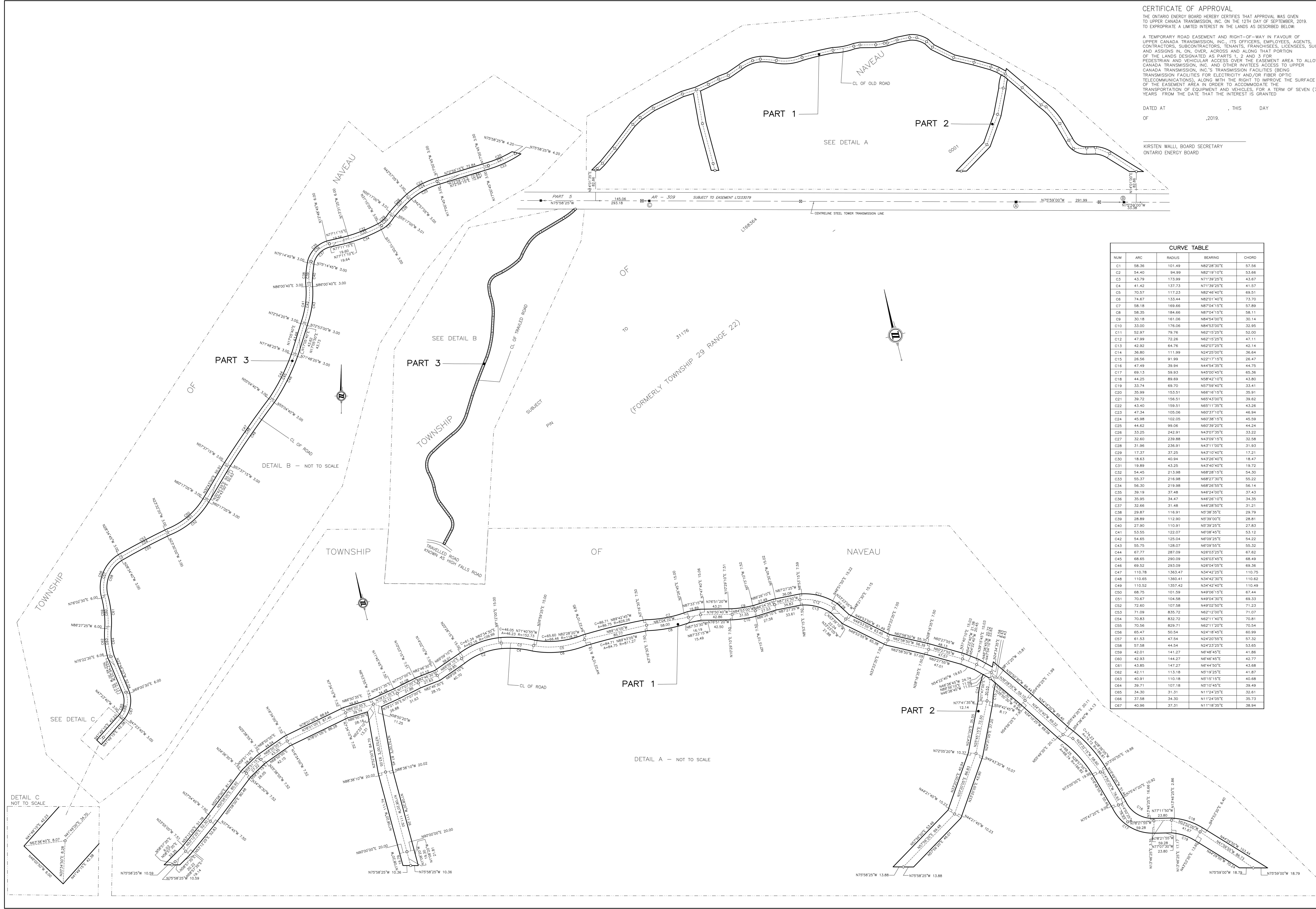
NOTES
BEARINGS ARE GRID, DERIVED FROM OBSERVED REFERENCE POINTS A AND B, HAVING A BEARING OF N75°59'00"W BY REAL TIME KINEMATIC (RTK) OBSERVATIONS, UTM ZONE 16, NAD83 (CSRS)(2010).
DISTANCES ARE GROUND AND CAN BE CONVERTED TO GRID BY MULTIPLYING BY THE COMBINED SCALE FACTOR OF 0.999918.
ALL FOUND SURVEY MONUMENTS ARE SSIB UNLESS OTHERWISE NOTED.
ALL FOUND SURVEY MONUMENTS ARE W.E.G. TAYLOR, O.L.S., UNLESS OTHERWISE NOTED.
ALL PLANTED SURVEY MONUMENTS ARE SSB(WIT) UNLESS OTHERWISE NOTED.
ALL CURVES ARE NON-TANGENTIAL UNLESS OTHERWISE NOTED.

METRIC
DISTANCES AND COORDINATES SHOWN ON THIS PLAN ARE IN METRES AND CAN BE CONVERTED TO FEET BY DIVIDING BY 0.3048.

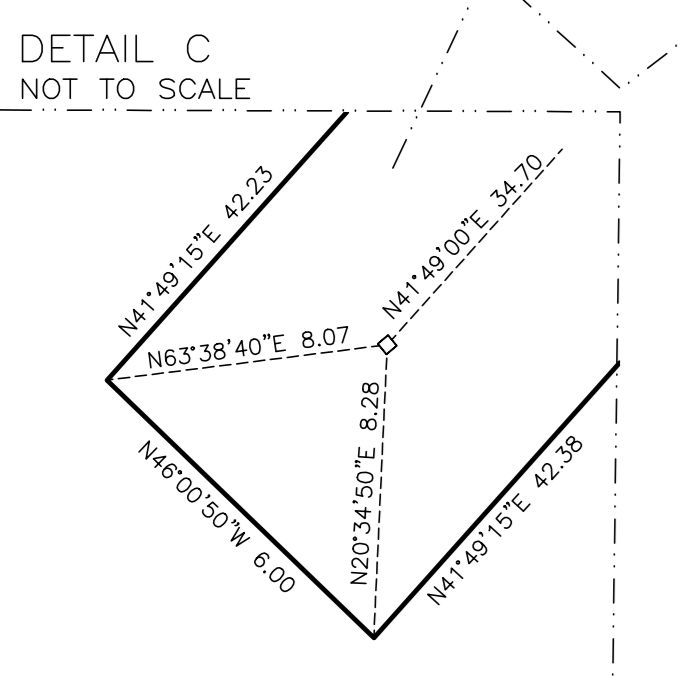
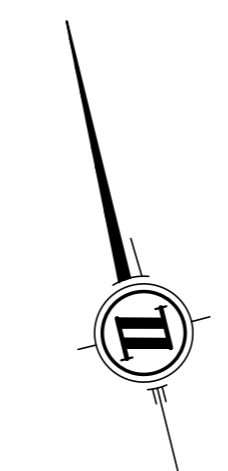
SURVEYOR'S CERTIFICATE
I CERTIFY THAT:
1. THIS SURVEY AND PLAN ARE CORRECT AND IN ACCORDANCE WITH THE SURVEYS ACT, THE SURVEYORS ACT AND THE LAND TITLES ACT AND THE REGULATIONS MADE UNDER THEM.
2. THE SURVEY WAS COMPLETED ON THE 21ST DAY OF JULY, 2019.

2019/10/8 DATE \_\_\_\_\_ PETER de HAAN ONTARIO LAND SURVEYOR

TBT ENGINEERING CONSULTING GROUP
TBT SURVEYORS INC. - A WHOLLY OWNED SUBSIDIARY OF TBT ENGINEERING LIMITED
1918 YONGE STREET, THUNDER BAY, ON P7E 6T9
T: (807) 624-5160 F: (807) 624-5161 www.tbte.co



CURVE TABLE
Table with 4 columns: CURVE NO., ARC, RADIUS, BEARING, CHORD. Rows C1 through C67.



DETAIL B - NOT TO SCALE

DETAIL A - NOT TO SCALE