



Jonathan McGillivray
Associate

Bay Adelaide Centre
333 Bay Street, Suite 625
Toronto, ON M5H 2R2

TEL +1.647.208.2677
FAX +1.888.734.9459

jonathan@demarcoallan.com

October 25, 2019

VIA RESS AND COURIER

Ontario Energy Board
P.O. Box 2319
2300 Yonge Street, 27th Floor
Toronto, ON M4P 1E4
Attention: Registrar

Dear Ms. Long:

Re: Corporation of the Town of Marathon North Shore LNG Project Application (the Proceeding)
Board File No.: EB-2018-0329

We are counsel to Anwaatin Inc. (**Anwaatin**). Further to our letter of yesterday's date outlining Anwaatin's currently confirmed First Nation members for the Proceeding, please find attached in Appendix "A" maps showing the historical lands and territories of each and all of Aroland First Nation, Animiigoo Zaagi'igan Anishinaabek Nation, and Ginoogaming First Nation.

Aroland First Nation and Ginoogaming First Nation are part of the Matawa First Nations territory. Animiigoo Zaagi'igan Anishinaabek Nation holds treaty rights through the Robinson-Superior Treaty (Treaty 60). These areas and the aboriginal and treaty rights of the First Nations of these lands are directly, and potentially adversely, affected by the project outlined in the Proceeding.

Sincerely,

A handwritten signature in black ink that reads "Jonathan McGillivray". The signature is fluid and cursive, with the first name being particularly prominent.

Jonathan McGillivray

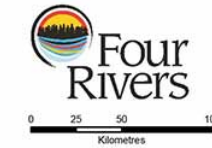
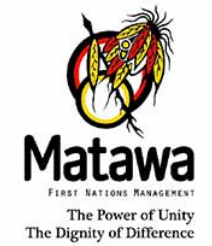
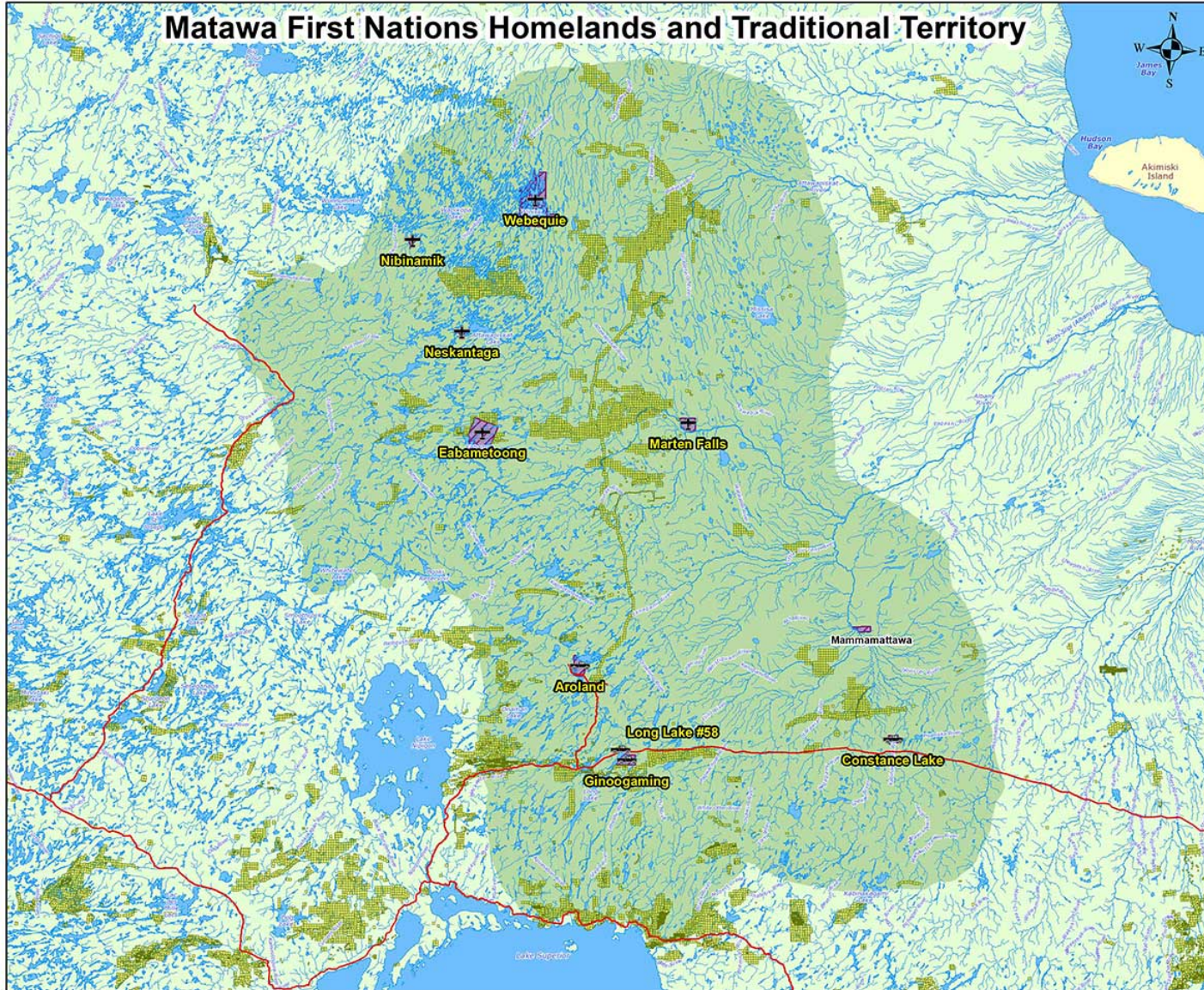
c. Daryl Skworchinski, Town of Marathon
Helen T. Newland, Dentons Canada LLP
Larry Sault, Anwaatin Inc.
Don Richardson, Shared Value Solutions Ltd.

Encl.

APPENDIX A



Matawa First Nations Homelands and Traditional Territory



- Road Access Community
- Air Access Community
- Active Mining Claims (Oct. 2013)
- Highway
- River
- Lake
- Matawa Member Community
- Matawa Shared Traditional Territory



Coordinate System: NAD 1983 UTM Zone 18N
 Created by: VQ, Four Rivers, Matawa
 Acknowledgements: Data provided by the Ontario Ministry of Natural Resources, Ministry of Northern Development and Mines, Natural Resources Canada Toporama

Disclaimer:
 Map is for discussion purposes only. Matawa First Nations Management makes no guarantee on the accuracy of the information displayed and we are not responsible for any decisions made on the basis of this data. This map cannot be relied upon for navigation purposes.

The Matawa Traditional Homelands Area identifies the general area commonly used for both current and past human activities but may not represent all areas worthy of special consideration.

GA#R FRIG MAP 005
 Dept: Four Rivers
 Matawa Environmental Services Group
 Issue Date: October 16, 2013
 Revision #/Date: N/A
 Approved by: VQ
 Document: Homelands Map

Robinson-Superior Treaty

Treaty 60

Signed: September 7, 1850

