

CERTIFICATE OF APPROVAL

THE ONTARIO NEARBY BOARD HEREBY CERTIFIES THAT APPROVAL WAS GIVEN TO UPPER CANADA TRANSMISSION, INC. ON THE 12TH DAY OF SEPTEMBER, 2019, TO EXPROPRIATE A LIMITED INTEREST IN THE LANDS AS DESCRIBED BELOW:

A TEMPORARY ROAD EASEMENT AND RIGHT-OF-WAY IN FAVOUR OF UPPER CANADA TRANSMISSION, INC., ITS OFFICERS, EMPLOYEES, AGENTS, CONTRACTORS, SUBCONTRACTORS, TENANTS, FRANCHISEES, LICENSEES, SUCCESSORS AND ASSIGNS IN WHOLE OR IN PART, ALONG THAT PORTION OF THE LANDS DESIGNATED AS PARTS 1 TO 3, INCLUSIVE, FOR PEDESTRIAN AND VEHICULAR ACCESS OVER THE EASEMENT AREA TO ALLOW UPPER CANADA TRANSMISSION, INC. AND OTHER NEARBY PARTIES TO ACCESS, CROSS, TRAVEL, OR PASS OVER THE FACILITIES (BEING TRANSMISSION FACILITIES FOR ELECTRICITY AND/OR FIBER OPTIC TELECOMMUNICATIONS), ALONG WITH THE RIGHT TO REMOVE THE SURFACE OF THE EASEMENT AREA OF THE ROAD OR OTHER FACILITIES, INCLUDING THE TRAIL, AND VEHICLES, FOR A TERM OF SEVEN (7) YEARS FROM THE DATE THAT THE INTEREST IS GRANTED

DATED AT \_\_\_\_\_, THIS \_\_\_\_\_ DAY  
OF \_\_\_\_\_, 2019.

CHRISTINE LONG, REGISTRAR & BOARD SECRETARY  
ONTARIO ENERGY BOARD

## EXPROPRIATION CERTIFICATE

UPPER CANADA TRANSMISSION, INC., in ACCORDANCE WITH SECTION 9 OF THE EXPROPRIATION ACT, R.S.O. 1990, c.E. 26, DOES HEREBY EXPROPRIATE A TEMPORARY EASEMENT IN FAVOUR OF UPPER CANADA TRANSMISSION, INC. AND ANY SUCCESSORS, ASSIGNS, SERVANTS OR AGENTS THEREOF, FOR THE PURPOSES OF AND INCIDENTAL TO THE CONSTRUCTION OF AN ELECTRICAL TRANSMISSION LINE INCLUDING ACCESS ROADS AND ANCILLARY FACILITIES AS APPROVED BY THE ONTARIO ENERGY BOARD AND SET OUT IN ORDER NO. EB-1919-0127, DATED SEPTEMBER 12, 2019.

UPPER CANADA TRANSMISSION, INC.

JENNIFER TIDMARSH, PROJECT DIRECTOR  
I HAVE AUTHORITY TO BIND THE CORPORATION

EXPROPRIATIONS ACT  
PLAN OF SURVEY OF  
PART TOWNSHIP OF NEBONAIONQUET  
DISTRICT OF ALGOMA

SCALE - 1:1750

ROTATIONS APPLIED TO PLAN BEARINGS  
FOR BEARING COMPARISONS

PLAN	ROTATION
P1	1°42'40" COUNTER-CLOCKWISE

## NOTES

BEARINGS ARE GRID, DERIVED FROM OBSERVED REFERENCE POINTS A AND B, HAVING A BEARING OF N13°16'05"W BY REAL TIME KINEMATIC (RTK) OBSERVATIONS, UTM ZONE 16, NAD83 (CSRS)(2010).

DISTANCES ARE GROUND AND CAN BE CONVERTED TO GRID BY  
MULTIPLYING BY THE COMBINED SCALE FACTOR OF 0.999968.

ALL PLANTED BARS ARE SS/B (WIT) UNLESS OTHERWISE NOTED.

### LEGEND

- |      |         |                                     |
|------|---------|-------------------------------------|
| □    | DENOTES | PLANTED SURVEY MONUMENT             |
| ■    | DENOTES | FOUND SURVEY MONUMENT               |
| IB   | DENOTES | IRON BAR                            |
| SSIB | DENOTES | SHORT STANDARD IRON BAR             |
| P1   | DENOTES | 1R-8957                             |
| P2   | DENOTES | PLAN OF ALGOMA CENTRAL & HUDSON BAY |
|      |         | RAILWAY COMPANY                     |
| 1743 | DENOTES | J.M.H. FARSTAD                      |
| WIT  | DENOTES | WITNESS                             |

## METRIC

DISTANCES AND COORDINATES SHOWN ON THIS PLAN ARE IN METRES AND CAN BE CONVERTED TO FEET BY DIVIDING BY 0.3048

**SURVEYOR'S CERTIFICATE**

I CERTIFY THAT:

1. THIS SURVEY AND PLAN ARE CORRECT AND IN ACCORDANCE WITH THE SURVEYS ACT, THE SURVEYORS ACT AND THE LAND TITLES ACT AND THE REGULATIONS MADE UNDER THEM.
2. THE SURVEY WAS COMPLETED ON THE 20TH DAY OF OCTOBER 2019.

DATE \_\_\_\_\_

PETER de HAAN  
ONTARIO LAND SURVEYOR



**TBT ENGINEERING**  
CONSULTING GROUP

TBT SURVEYORS INC.  
- A WHOLLY OWNED SUBSIDIARY OF TBT ENGINEERING LIMITED

918 YONGE STREET, THUNDER BAY, ON P7E 6T9

(807) 624-5160 F: (807) 624-5161 [www.tbte.co](http://www.tbte.co)

Z.W.	CHECKED BY: PdeH	DATED: 2019/10/2
------	------------------	------------------

Filial: 11-V-Projekt (2017) 16-080 Legen der Realisationskonstruktion (Lm) 2000 mm hoch

CHORD TABLE				
CURVE	CHORD BEARING	CHORD DISTANCE	RADIUS	ARC DISTANCE
C1	N115°30'W	C=70.26	R=188.25	A=70.64
C2	N113°11'30"W	C=70.03	R=188.03	A=70.68
C3	N107°20'W	C=163.28	R=500.83	A=164.01
C4	N107°23'W	C=161.15	R=494.83	A=161.88
C5	N123°02'W	C=170.19	R=517.19	A=170.89
C6	N120°50'W	C=171.63	R=529.63	A=174.84
C7	N119°15'W	C=154.22	R=113.64	A=154.39
C8	N119°16'W	C=155.89	R=199.84	A=156.38
C9	N118°02'W	C=143.90	R=109.94	A=144.01
C10	N118°02'W	C=142.46	R=176.44	A=142.56
C11	N61°49'W	C=82.64	R=94.41	A=85.53
C12	N61°56'W	C=81.24	R=93.41	A=84.53
C13	N68°33'W	C=116.28	R=129.21	A=118.70
C14	N72°43'W	C=96.03	R=175.21	A=107.23
C15	N73°53'W	C=101.38	R=188.38	A=112.03
C16	N70°35'W	C=245.84	R=564.06	A=244.78
C17	N80°31'W	C=20.61	R=21.46	A=21.50
C18	N86°24'W	C=18.24	R=18.46	A=18.50
C19	N44°23'W	C=20.89	R=21.46	A=21.50
C20	N44°25'W	C=33.76	R=34.73	A=34.71
C21	N62°39'W	C=157.24	R=189.31	A=157.45
C22	N62°27'W	C=153.83	R=188.31	A=161.15
C23	N50°16'W	C=129.79	R=136.03	A=95.14
C24	N50°02'W	C=86.34	R=97.03	A=86.62
C25	N42°10'W	C=234.14	R=587.17 (P246T)	A=235.85
C26	N15°04'W	C=234.14	R=587.06	A=235.86
C27	N30°30'W	C=172.27	R=367.07 (P246T)	A=173.94
C28	N30°30'W	C=172.27	R=367.07 (P246T)	A=174.06
C29	N10°50'W	C=234.74	R=587.24 (P246T)	A=237.47

OBSERVED REFERENCE POINTS (ORP's) DERIVED FROM GPS OBSERVATIONS USING THE PRECISE POINT POSITIONING SERVICE AND ARE REFERRED TO UTM ZONE 16, NAD83 (CSRS)(2010). COORDINATES COMPLY WITH THE URBAN ABSOLUTE ACCURACY PER SEC.14(2) OF D.O.REG. 216/10

POINT ID	NORTHING	EASTING
A	5 306 648.59	663 951.31
B	5 307 214.17	663 451.21
C	5 308 785.14	664 147.82

COORDINATES CANNOT, IN THEMSELVES, BE USED TO RE-ESTABLISH CORNERS OR BOUNDARIES SHOWN ON THIS PLAN.



**EXPROPRIATION CERTIFICATE**  
UPPER CANADA TRANSMISSION, INC., IN ACCORDANCE WITH SECTION 9 OF THE EXPROPRIATIONS ACT, R.S.O. 1990, c.E. 26, DOES HEREBY EXPROPRIATE A PERMANENT EASEMENT IN FAVOUR OF UPPER CANADA TRANSMISSION, INC. AND ANY SUCCESSORS, TO THE CONSTRUCTION OF AN ELECTRICAL TRANSMISSION LINE AS APPROVED BY THE ONTARIO ENERGY BOARD AND SET IN ORDER NO. ES-2019-0127, DATED SEPTEMBER 12, 2019.

THE EXPROPRIATING AUTHORITY  
**UPPER CANADA TRANSMISSION, INC**

JENNIFER TIDMARSH, PROJECT DIRECTOR  
I HAVE AUTHORITY TO BIND THE CORPORATION

DATE

**CERTIFICATE OF APPROVAL**  
A TEMPORARY ROAD EASEMENT AND RIGHT-OF-WAY IN FAVOUR OF UPPER CANADA TRANSMISSION, INC., ITS OFFICERS, EMPLOYEES, AGENTS, CONTRACTORS, SUBCONTRACTORS, TENANTS, FRANCHISEES, LICENSEES, SUCCESSORS AND ASSIGNS IN, ON, OVER, ACROSS AND ALONG THAT PORTION OF THE LANDS DESIGNATED AS PART 1 FOR PEDESTRIAN AND VEHICULAR ACCESS OVER THE EASEMENT AREA TO ALLOW UPPER CANADA TRANSMISSION, INC. AND OTHER INVITEES ACCESS TO UPPER CANADA TRANSMISSION, INC.'S TRANSMISSION FACILITIES (BEING TRANSMISSION FACILITIES FOR ELECTRICITY AND/OR FIBER OPTIC TELECOMMUNICATIONS), ALONG WITH THE RIGHT TO IMPROVE THE SURFACE OF THE EASEMENT AREA IN ORDER TO ACCOMMODATE THE TRANSPORTATION OF EQUIPMENT AND VEHICLES, FOR A TERM OF SEVEN (7) YEARS FROM THE DATE THAT THE INTEREST IS GRANTED.

DATED AT . THIS DAY  
OF .2019.

CHRISTINE LONG, REGISTRAR AND BOARD SECRETARY  
ONTARIO ENERGY BOARD

**PLAN**  
I CERTIFY THAT THIS PLAN IS REGISTERED IN THE LAND REGISTRY OFFICE FOR THE LAND TITLES DIVISION OF ALGOMA (NO. 1) AT O'CLOCK ON THE DAY OF .2019.  
AND ENTERED IN THE PARCEL REGISTER FOR PROPERTY IDENTIFIER 31177-0017

REPRESENTATIVE FOR THE LAND REGISTRAR (55)

SCHEDULE			
PARTS 1 & 2 ENUMERATED HEREUNDER REFER TO LANDS IN WHICH A TEMPORARY EASEMENT FOR A TRANSMISSION LINE IS EXPROPRIATED BY UPPER CANADA TRANSMISSION INC. INTERESTS AS DESCRIBED IN L168364 HAVE NOT BEEN EXPROPRIATED AND CONTINUE TO BE SUBJECT TO THOSE INTERESTS.			
PART	TOWNSHIP	PIN	AREA
1	NEBONAIONQUET	PART OF 31177-0017	0.616 ha
2			0.086 ha

PARTS 1 & 2 SUBJECT TO L168364

**EXPROPRIATIONS ACT  
PLAN OF SURVEY OF  
PART OF  
TOWNSHIP OF NEBONAIONQUET  
DISTRICT OF ALGOMA**

SCALE - 1:1000  
20 0 25 50

ROTATIONS APPLIED TO PLAN BEARINGS FOR BEARING COMPASSIONS	
PLAN	ROTATION
P2&P3	1°42'40" COUNTER CLOCKWISE

OBSERVED REFERENCE POINTS (ORP <sub>s</sub> ) DERIVED FROM GPS OBSERVATIONS USING THE PRECISE POINT POSITIONING SERVICE AND ARE REFERRED TO UTM ZONE 16, NAD83 (CSRS)(2010). COORDINATES COMPLY WITH THE RURAL ABSOLUTE ACCURACY PER SEC.14(2) OF O.REG. 216/10			
POINT ID	NORTHING	EASTING	
A	5 310 533.50	683 714.13	
B	5 309 535.94	683 779.04	
C	5 309 173.21	683 938.15	

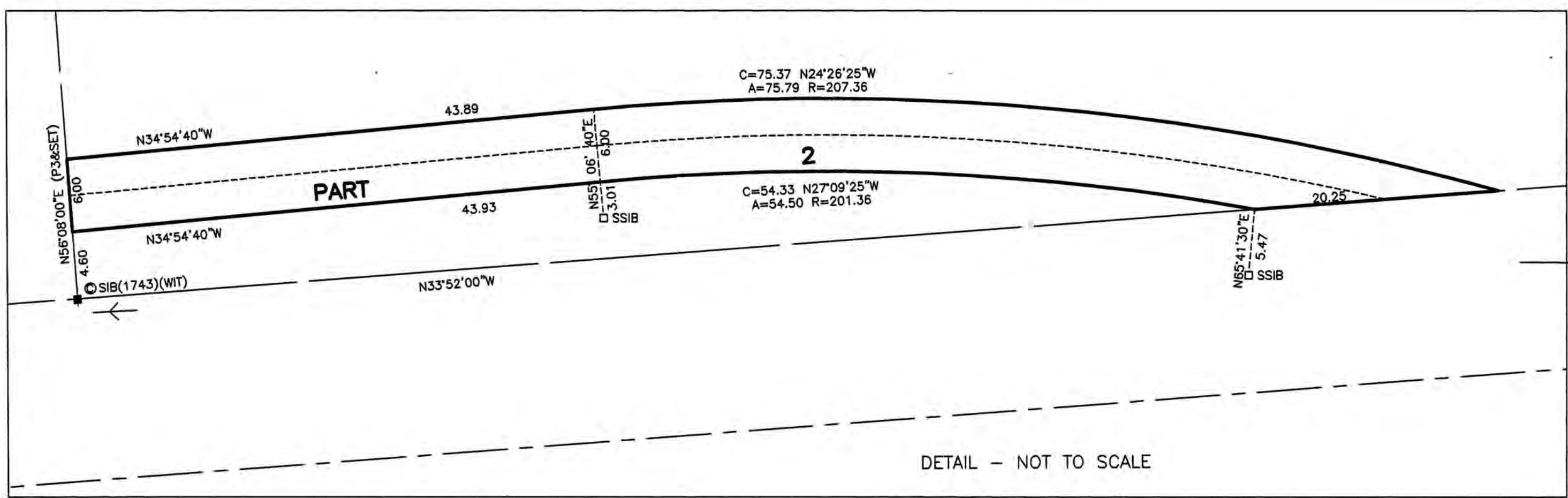
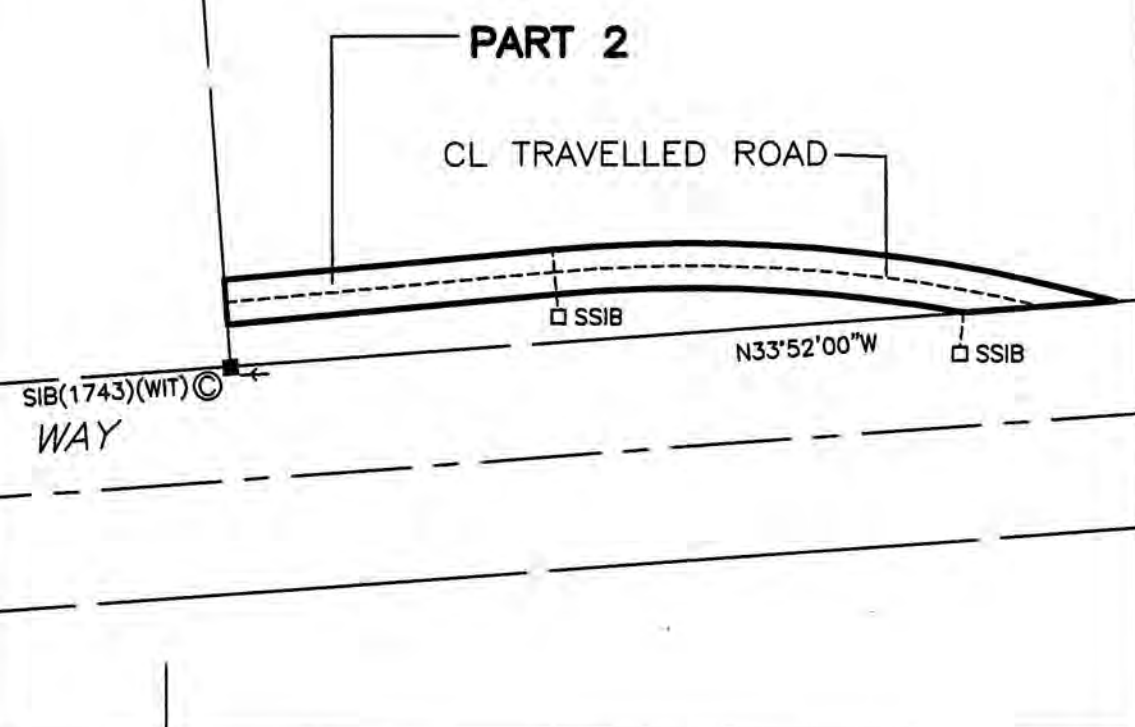
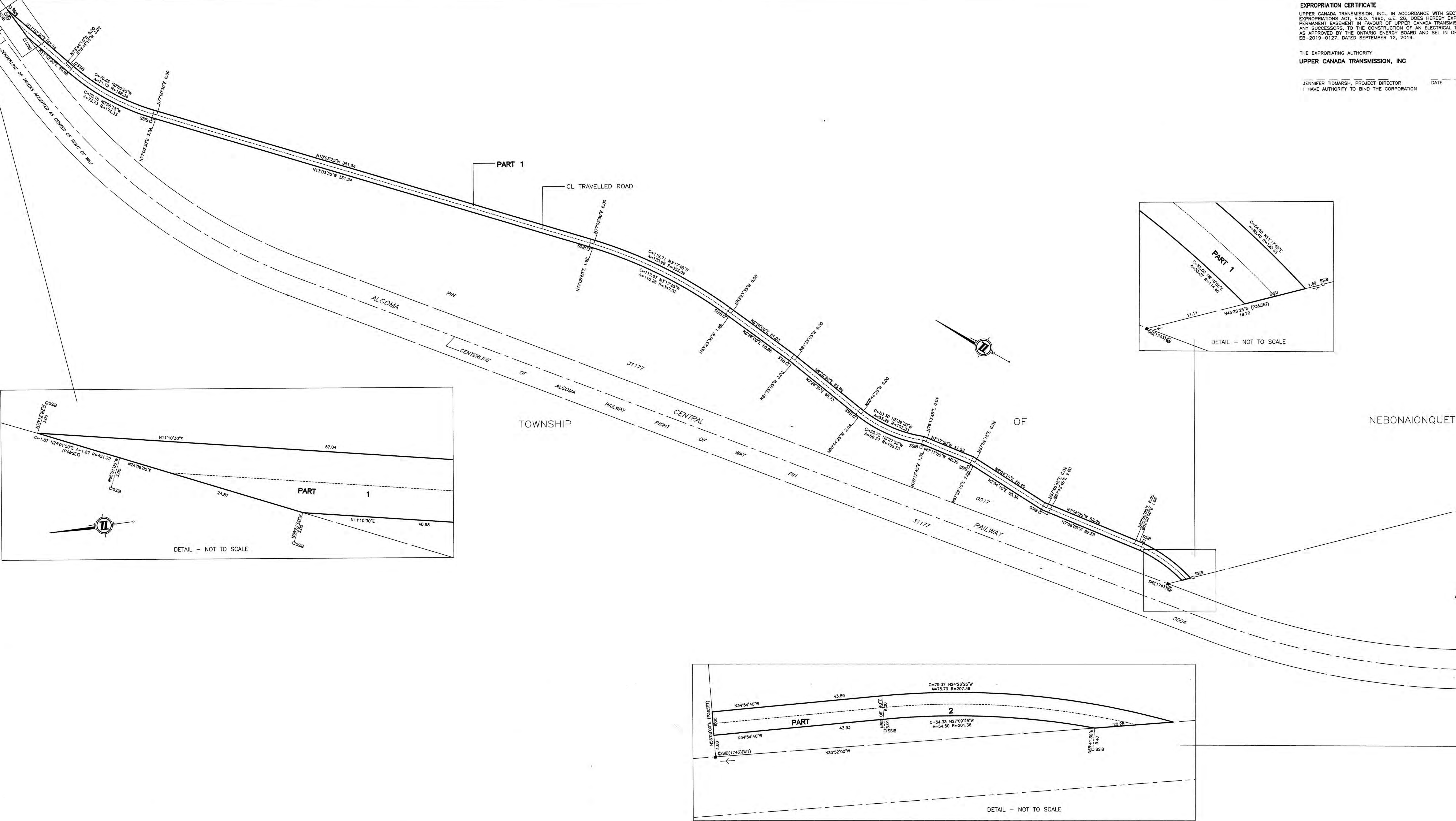
COORDINATES CANNOT, IN THEMSELVES, BE USED TO RE-ESTABLISH CORNERS OR BOUNDARIES SHOWN ON THIS PLAN.

**METRIC**  
DISTANCES AND COORDINATES SHOWN ON THIS PLAN ARE IN METRES AND CAN BE CONVERTED TO FEET BY DIVIDING BY 0.3048.

**SURVEYOR'S CERTIFICATE**  
I CERTIFY THAT:  
1. THIS SURVEY AND PLAN ARE CORRECT AND IN ACCORDANCE WITH THE SURVEYORS ACT, THE SURVEYORS ACT AND THE LAND TITLES ACT AND THE REGULATIONS MADE UNDER THEM.  
2. THE SURVEY WAS COMPLETED ON THE 11ST DAY OF OCT. 2019.

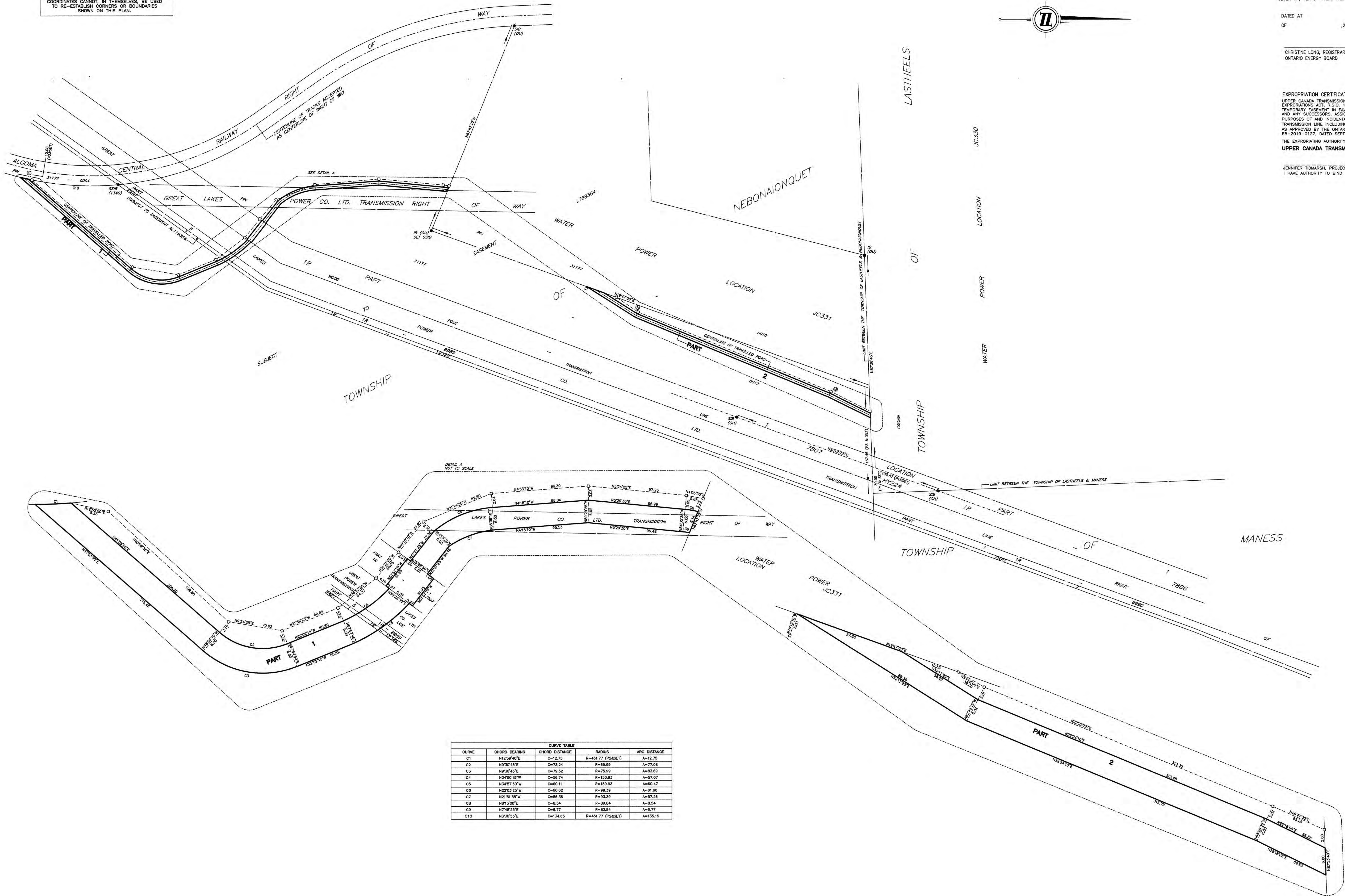
DATE

PETER de HAAN  
ONTARIO LAND SURVEYOR





OBSERVED REFERENCE POINTS (ORP) DERIVED FROM GPS OBSERVATIONS USING THE PRECISE POINT POSITIONING SERVICE AND ARE REFERRED TO UTM ZONE 18, NAD83 (CSRS)(2010). COORDINATES COMPLY WITH THE URBAN ABSOLUTE ACCURACY PER 50.1(4) OF O.R.S. 316/10.		
POINT ID	NORTHING	EASTING
A	5 311 536.71	683 951.03
B	5 311 826.42	684 070.43
C	5 310 525.84	683 752.35
COORDINATES CANNOT, IN THEMSELVES, BE USED TO RE-ESTABLISH CORNERS OR BOUNDARIES SHOWN ON THIS PLAN.		



CURVE TABLE				
CURVE	CHORD BEARING	CHORD DISTANCE	RADIUS	ARC DISTANCE
C1	N125°10'W	C=12.75	R=451.77 (P245E1)	A=12.75
C2	N9°30'45"E	C=73.24	R=55.89	A=77.08
C3	N9°30'45"E	C=78.52	R=75.99	A=83.89
C4	N34°50'15"W	C=56.74	R=103.93	A=57.07
C5	N34°50'50"W	C=60.11	R=109.93	A=60.47
C6	N22°03'25"W	C=60.82	R=99.39	A=61.80
C7	N21°51'55"W	C=56.38	R=83.39	A=57.28
C8	N8°15'00"E	C=8.34	R=49.84	A=8.54
C9	N7°48'25"E	C=6.77	R=53.64	A=6.77
C10	N3°36'55"E	C=134.65	R=451.77 (P245E1)	A=135.15

#### CERTIFICATE OF APPROVAL

THE ONTARIO ENERGY BOARD HEREBY CERTIFIES THAT APPROVAL WAS GIVEN TO UPPER CANADA TRANSMISSION, INC. ON THE 12TH DAY OF SEPTEMBER, 2019, TO EXPROPRIATE A LIMITED INTEREST IN THE LANDS AS DESCRIBED BELOW:

A TEMPORARY ROAD EASEMENT AND RIGHT-OF-WAY IN FAVOUR OF UPPER CANADA TRANSMISSION, INC., ITS OFFICERS, EMPLOYEES, AGENTS, CONTRACTORS, SUBCONTRACTORS, TENANTS, FRANCHISEES, LICENSEES, SUCCESSORS AND ASSIGNS IN, ON, OVER, ACROSS AND ALONG THAT PORTION OF THE LANDS DESIGNATED AS PARTS 1 & 2, FOR PEDESTRIAN AND VEHICULAR ACCESS OVER THE EASEMENT AREA TO ALLOW UPPER CANADA TRANSMISSION, INC. AND OTHER INVITEES ACCESS TO UPPER CANADA TRANSMISSION, INC.'S TRANSMISSION FACILITIES (BEING TRANSMISSION FACILITIES FOR ELECTRICITY AND/OR FIBER OPTIC TELECOMMUNICATIONS), ALONG WITH THE RIGHT TO IMPROVE THE SURFACE OF THE EASEMENT AREA IN ORDER TO ACCOMMODATE THE TRANSPORTATION OF EQUIPMENT AND VEHICLES, FOR A TERM OF SEVEN (7) YEARS FROM THE DATE THAT THE INTEREST IS GRANTED.

DATED AT \_\_\_\_\_, THIS DAY  
OF \_\_\_\_\_, 2019.

CHRISTINE LONG, REGISTRAR & BOARD SECRETARY  
ONTARIO ENERGY BOARD

#### EXPROPRIATION CERTIFICATE

UPPER CANADA TRANSMISSION, INC., IN ACCORDANCE WITH SECTION 9 OF THE EXPROPRIATIONS ACT, R.S.O. 1990, c.E. 28, DOES HEREBY EXPROPRIATE A TEMPORARY EASEMENT IN FAVOUR OF UPPER CANADA TRANSMISSION, INC. AND ANY SUCCESSORS, ASSIGNS, SERVANTS OR AGENTS THEREOF, FOR THE PURPOSES OF AND INCIDENTAL TO THE CONSTRUCTION OF AN ELECTRICAL TRANSMISSION LINE INCLUDING ACCESS ROADS AND ANCILLARY FACILITIES AS AS APPROVED BY THE ONTARIO ENERGY BOARD AND SET OUT IN ORDER NO. EB-2019-0177, DATED SEPTEMBER 12, 2019.

THE EXPROPRIATING AUTHORITY  
UPPER CANADA TRANSMISSION, INC.

JENNIFER TOMARSH, PROJECT DIRECTOR  
I HAVE AUTHORITY TO BIND THE CORPORATION

DATE \_\_\_\_\_

Page 3 of 3

CERTIFY THAT THIS PLAN IS REGISTERED IN THE LAND REGISTRY OFFICE FOR THE LAND TITLES DIVISION OF ALGOMA (NO. 1) AT \_\_\_\_\_ O'CLOCK ON THE \_\_\_\_\_ DAY OF \_\_\_\_\_, 2019.

AND ENTERED IN THE PARCEL REGISTER FOR PROPERTY IDENTIFIER 31177-0017.

REPRESENTATIVE FOR THE LAND REGISTRAR (1)

#### SCHEDULE

PARTS 1 & 2 ENUMERATED HEREUNDER REFER TO LANDS IN WHICH A TEMPORARY LIMITED INTEREST FOR THE PURPOSES OF PREL. UNDISTURBED AND UNDESTRUCTED EASEMENT FOR ACCESS FOR A TERM COMMENCING ON REGISTRATION OF THE PLAN AND EXPIRING SEVEN YEARS THEREAFTER IS EXPROPRIATED BY UPPER CANADA TRANSMISSION, INC.

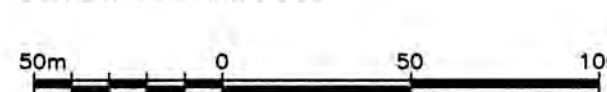
INTERESTS AS DESCRIBED IN L136834 AND AL119356 HAVE NOT BEEN EXPROPRIATED AND CONTINUE TO BE SUBJECT TO THOSE INTERESTS.

PART	TOWNSHIP	PN	AREA
1	NEBONAIONQUET	PART OF 31177-0017	0.45 ha
2			0.27 ha

PARTS 1 & 2 SUBJECT TO EASEMENT L136834.  
PART 1 SUBJECT TO EASEMENT AL119356.

#### EXPROPRIATIONS ACT PLAN OF SURVEY OF PART TOWNSHIP OF NEBONAIONQUET DISTRICT OF ALGOMA

SCALE - 1:2000



ROTATIONS APPLIED TO PLAN BEARINGS FOR BEARING COMPARISONS	
PLAN	ROTATION
P1	1°45'55" COUNTER-CLOCKWISE
P3	1°47'10" COUNTER-CLOCKWISE

#### NOTES

BEARINGS ARE GRID, DERIVED FROM OBSERVED REFERENCE POINTS A AND B, HAVING A BEARING OF N22°23'50"E BY REAL TIME KINEMATIC (RTK) OBSERVATIONS, UTM ZONE 18, NAD83 (CSRS)(2010).

DISTANCES ARE GROUND AND CAN BE CONVERTED TO GRID BY MULTIPLYING BY THE COMBINED SCALE FACTOR OF 0.999971.

ALL PLANTED BARS ARE SSIB (WIT) UNLESS OTHERWISE NOTED.

#### LEGEND

Q DENOTES PLANTED SURVEY MONUMENT  
■ DENOTES FOUND SURVEY MONUMENT  
P1 DENOTES STANDARD IRON BAR  
P2 DENOTES 1P-7859  
P3 DENOTES PLAN OF ALGOMA CENTRAL & HUDSON BAY RAILWAY COMPANY  
P3 DENOTES PLAN OF WATER POWER LOCATION ATTACHED TO L136834  
L1340 DENOTES P.H. TOLLANCE G.L.S.  
OH DENOTES ONTARIO HYDRO  
OU DENOTES ORIGIN UNKNOWN  
WIT DENOTES WITNESS

#### METRIC

DISTANCES AND COORDINATES SHOWN ON THIS PLAN ARE IN METRES AND CAN BE CONVERTED TO FEET BY DIVIDING BY 0.3048.

#### SURVEYOR'S CERTIFICATE

I CERTIFY THAT:  
1. THIS SURVEY AND PLAN ARE CORRECT AND IN ACCORDANCE WITH THE SURVEYORS ACT, THE SURVEYORS ACT AND THE LAND TITLES ACT AND THE REGULATIONS MADE UNDER THEM  
2. THE SURVEY WAS COMPLETED ON THE 20TH DAY OF OCTOBER, 2019.

DATE \_\_\_\_\_ PETER de HAAN  
ONTARIO LAND SURVEYOR

**TBT ENGINEERING**  
CONSULTING GROUP  
TBT SURVEYORS INC.  
A WHOLLY OWNED SUBSIDIARY OF TBT ENGINEERING LIMITED

1918 YONGE STREET, THUNDER BAY, ON P7E 6T9  
T: (807) 624-5160 F: (807) 624-5161 www.tbte.co

DRAWN BY: Z.W. CHECKED BY: PdeH DATED: 2019/11/04  
DWG. No.: File: T:\Projects\2019\18-588 Legal: ENF Neutrality\Urban\neutrality\2019\2019\_001.dwg