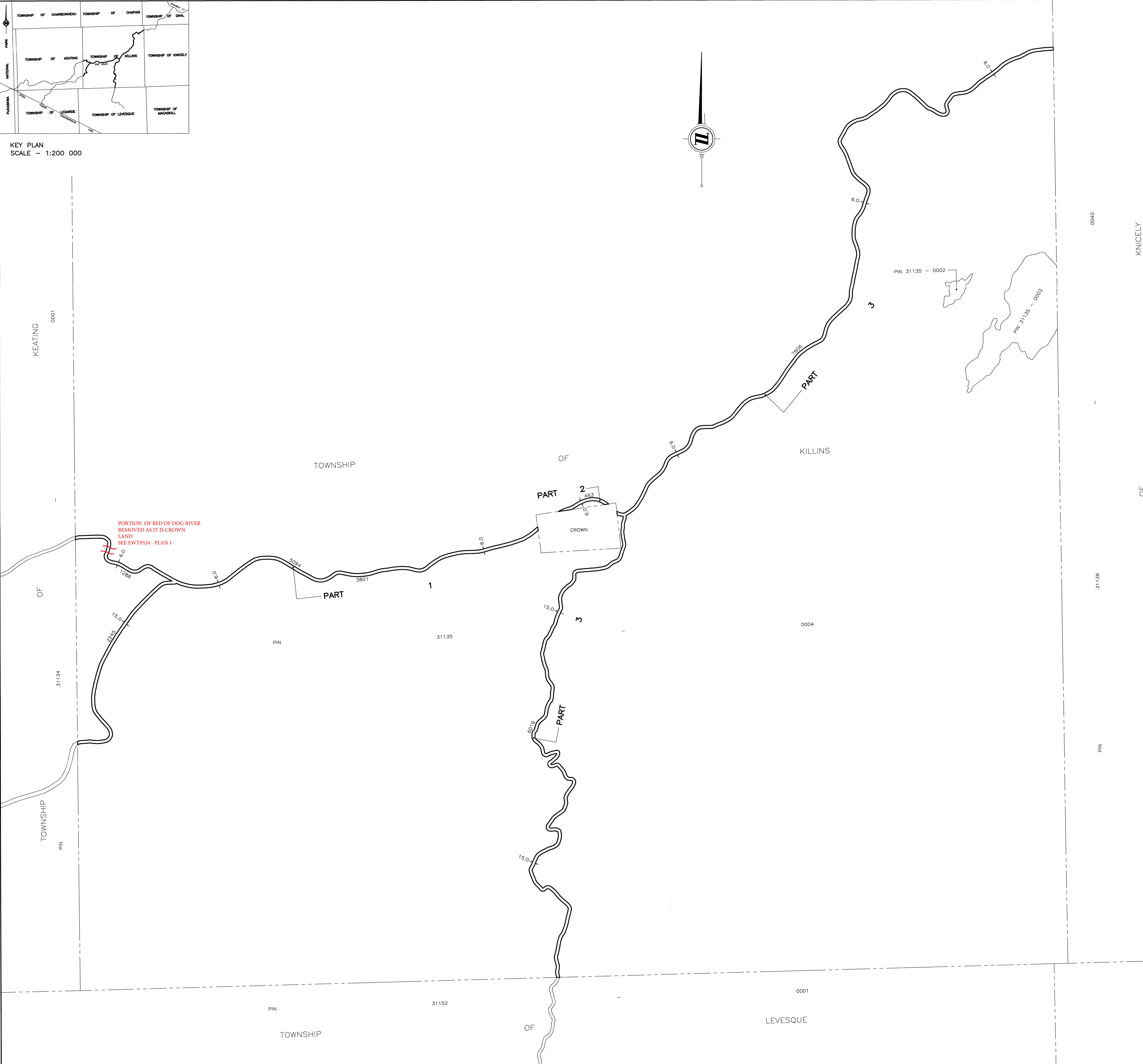


KEY PLAN
SCALE - 1:200 000




PLAN OF
PROPOSED EAST-WEST TIE
TRANSMISSION CORRIDOR
AND ACCESS LANDS (EWT 9524)
TOWNSHIP OF KILLINS
DISTRICT OF ALGOMA

SCALE - 1:12500
200m 0 250 500m

SCHEDULE			
PART	AREA	TENURE	IDENTIFIER
1	64273 sq.m	TEMPERARY ACCESS	9524
2	2779 sq.m		
3	135982 sq.m		

METRIC
DISTANCES AND COORDINATES SHOWN ON THIS PLAN ARE IN
METRES AND CAN BE CONVERTED TO FEET BY DIVIDING BY 0.3048.



TBT ENGINEERING
CONSULTING GROUP
TBT SURVEYORS INC. - A WHOLLY OWNED SUBSIDIARY OF TBT ENGINEERING LIMITED

1918 YONGE STREET, THUNDER BAY, ON P7E 6T9
T: (807) 624-5160 F: (807) 624-5161 www.tbte.ca

DRAWN BY: Z.W.

CHECKED BY: PdeH

DATED: 2019/04/02

DWG. No.: File: Y:\Projects\2018\18-568 EWT Nextbridge\Microsurvey\EWT 9524 Station.dwg