

**UPPER CANADA TRANSMISSION, INC.
(d/b/a NextBridge Infrastructure)**

**East-West Tie Line
Quarterly Construction Progress Report**

Reporting Period: October 1, 2020 to December 31, 2020

Date Submitted: January 22, 2021

- In its Decision and Order dated August 7, 2013 (Designation Decision), the Ontario Energy Board (OEB or Board) named Upper Canada Transmission, Inc. (UCT), doing business as NextBridge Infrastructure (NextBridge), as the designated transmitter for the development of the East-West Tie transmission line (EWT Project or Project).
- On July 31, 2017, NextBridge submitted an application for leave to construct (LTC) the EWT Project, pursuant to section 92 of the Ontario Energy Board Act. On February 11, 2019, the OEB issued a Decision and Order approving the LTC application and amending the conditions of UCT's Electricity Transmission Licence to authorize it to proceed to the construction, expansion, or reinforcement of the transmission system for the EWT Project, pursuant to a directive to the OEB issued by the Minister of Energy, Northern Development and Mines and approved by Order in Council 52/2019 (OIC), dated January 30, 2019.
- On February 11, 2019, the OEB amended NextBridge's Electricity Transmission Licence to include conditions requiring NextBridge to report to the Independent Electricity System Operator (IESO) on the progress, timeliness, and cost-effectiveness of the EWT Project and provide such information that the OEB may from time to time require.
- On July 29, 2019, the OEB issued a letter outlining NextBridge's reporting requirements pursuant to sections 14.1 and 13.3 of its Electricity Transmission Licence.
- In accordance with the OEB's letter dated July 29, 2019, NextBridge is required to report quarterly on the 15th business day of each January, April, July, and October. NextBridge will continue to file such quarterly reports until the EWT Project is in-service and land restoration activities have been completed.

This report is organized as follows:

1	Summary of the EWT Project Progress to June 30, 2020	<p>A detailed summary of the status of the EWT Project, including work completed during the reporting period, overall progress, cost and construction schedule updates, and emerging risks. Where applicable, impacts from changes to Hydro One Network Inc.'s (HONI's) station work will be noted. This section includes:</p> <ul style="list-style-type: none"> • Table of Key Project Statuses; • Table of Activities in the Work Fronts (WFs) for the Reporting Period; and • Summary of Activities within the Reporting Period.
2	Construction Schedule Update	<p>Construction milestones for the Project were originally identified in the LTC proceedings, specifically in NextBridge's responses to Procedural Order #3, filed May 3, 2018, and updated September 24, 2018. On September 3, 2020, in accordance with Conditions 2 and 3 of the Leave to Construct Order, NextBridge notified the OEB of a change in construction schedule to reflect a change to the in-service date from Q4 2021 to March 31, 2022. This section provides an overview of the updated milestones based on the permitting and approval/authorization requirements as they relate to the newly proposed Construction Schedule and includes:</p> <ul style="list-style-type: none"> • Project Map • Updated Table of Milestone Updates; and • Permit and Approval/Authorization Requirements by WF. <p>Where applicable, impacts from changes to HONI's station work will be noted.</p>
3	Construction Cost Update	<p>Period-specific cost summaries providing details for each cost category in NextBridge's Project cost budget, including:</p> <ul style="list-style-type: none"> • Actual spent; • Percentage of budgeted costs spent to date; • Updated forecast; and • Material forecast variance (if applicable). <p>This section also includes a Project Cost Update Summary and associated rationale for forecast variance and associated mitigating measures for negative forecast variances.</p>
4	Risk Management	<p>A summary of risks that have occurred or could potentially occur during construction, including a discussion of potential impacts on schedule, cost, or scope, and potential options for mitigating or eliminating the risk. This section includes:</p> <ul style="list-style-type: none"> • Risk Management Issues, Potential Impacts, and Mitigation Measures Table.
5	Reference Materials	<p>This report includes references to correspondence with Indigenous communities, other stakeholders and Ministries.</p> <ul style="list-style-type: none"> • Copies of related correspondence can be found in this section.

1. Summary of the EWT Project Progress During Reporting Period

A. Table of Key Project Statuses

Key Status	Summary
Stage of Construction	<p>Construction activities continued in all WFs</p> <ul style="list-style-type: none"> - Clearing and access construction were the only activities which continued through the holiday break and are expected to be completed by 2Q 2021. - Crews to resume work in the caribou nursery habitat area once weather conditions allow. - Stringing activities continue in WFs 1-3. - The final work camp in Wawa is expected to open in 1Q 2021. - New towers being designed and manufactured to accommodate the revised White Lake Narrows crossing. - Additional information on this topic can be found in Section 1. B. below.
Costs	<p>NextBridge continues to maintain focus on the budget and tracks updates monthly.</p> <ul style="list-style-type: none"> - Known construction costs for the EWT Project are forecasted to be on budget as compared to the LTC application. - Costs associated with the COVID-19 Global Pandemic have not been estimated in their entirety and may not be known until well after construction is completed and the COVID-19 Global Pandemic is resolved. - Additional information on this topic can be found in Section 3. below.

Key Status	Summary
Schedule	<p>Construction activities are ongoing in all WFs</p> <ul style="list-style-type: none"> - Only 15 structures remain with outstanding land access issues. <ul style="list-style-type: none"> • These outstanding land access issues are expected to be resolved by 1Q 2021. - Attending meetings with HONI to coordinate testing schedule and conductor/optical ground wire tie-ins to the Lakehead, Marathon, and Wawa transformer stations (TSs). - Clearing and access activities have progressed well during 4Q 2020 although seasonal temperatures are above normal. <ul style="list-style-type: none"> • Above normal temperatures prevented early construction of winter roads in some areas. • Crews have cleared over 1000 hectares and built over 200 km of access road since the clearing season started in September 2020. • Both activities on track to be completed by Spring 2021. - All activities for WF 1 have been completed with the exceptions of works on structures A001-A002 and reclamation works. - NextBridge is making continuous efforts with the applicable parties and governmental agencies, including Ministry of the Environment, Conservation, and Parks (MECP), Ministry of Natural Resources and Forestry (MNR), Ministry of Energy, Northern Development and Mines, Ministry of Transportation (MTO), Infrastructure Ontario, Fisheries and Oceans Canada (DFO), Canada Wildlife Service (CWS), Environment and Climate Change Canada (ECCC), NAV Canada, Indigenous Services Canada (ISC), Transport Canada, Indigenous engagement, and others, in order to maintain the current schedule. - Additional information on Project schedule can be found throughout this Report.

Key Status	Summary
Emerging Risks	<p>Impacts of COVID-19 Global Pandemic on the Project.</p> <p>Construction Impacts</p> <ul style="list-style-type: none"> - NextBridge and its Indigenous and local partners consider the health and safety of their employees, contractors, and the general public to be their top priority. - NextBridge has continued taking additional steps to monitor the daily safety of workers on site, including screening new workers and workers who have recently travelled, modifying accommodations and travel of workers, providing additional cleaning and PPE resources, and daily temperature checks of everyone on site. - Weekly calls are held with the construction team to review COVID-19 impacts and discuss the need for further mitigation measures on site. - The Province of Ontario declared a provincewide shutdown to commence on December 26, 2020. <ul style="list-style-type: none"> • The shutdown is expected to be lifted on January 9, 2021. • The construction activities associated with the Project are not subject to the shutdown as the activities are considered essential, and, therefore, are planned to continue during the shutdown. • The current Project construction schedule is not expected to be impacted as numerous mitigation measures have been instituted on the Project. - A COVID-19 Response brochure explaining health and safety protocols was developed by the Project General Contractor, Valard. <ul style="list-style-type: none"> • The brochure was provided to all workers and reviewed further during tailboard meetings. • A copy of the COVID-19 Response brochure can be found in Section 5, Appendix A. - The General Contractor has arranged for COVID-19 testing to be completed on-site for all project personnel who travel off site. <ul style="list-style-type: none"> • Testing will initially be completed at a hotel in Thunder Bay where all workers will be travelling through. • Workers will be tested and isolated in the hotel until they are cleared before they will be sent to site.

Key Status	Summary
	<ul style="list-style-type: none"> - Starting in 2021, once the majority of workers have returned to Thunder Bay, the testing unit will be moved to the Marathon camp location where Valard will arrange a quarantined dormitory where the workers will reside while awaiting test results. - It is expected that approximately 75-80 COVID-19 tests will be completed per day while the construction workers unit is in full operation. <p>Permitting and Authorization Impacts</p> <ul style="list-style-type: none"> - During the temporary suspension of construction activities, NextBridge continued to work with applicable ministries, agencies, and Indigenous communities to acquire the remaining outstanding permits and authorizations. - At this time, many ministries, agencies, and Indigenous communities are also impacted by the COVID-19 Global Pandemic, including office closures, and may not be able to process NextBridge's requests for permits and authorizations in a timely manner. <ul style="list-style-type: none"> • Impacts due to a delay in permits and authorizations have been considered in the updated Project construction schedule.
<p>Indigenous Activities</p>	<p>Engagement Continuing</p> <ul style="list-style-type: none"> - NextBridge continues to engage with the 18 identified Indigenous communities in the Project area. - Engagement highlights include robust consultations on emerging information associated with culturally significant sites, archaeology, provincial parks, and conservation reserve specific permitting, the Indigenous Facilitator Program, ongoing monitoring of COVID-19 developments and discussions, Caribou SAR permits and Section 28.2 Permits. - Ongoing engagement continues on capacity funding agreements for communities to retain third party experts or other engagement costs, where required. - Section 28.2 Permit process has concluded with Michipicoten First Nation and Pays Plat First Nation.

Key Status	Summary
	<ul style="list-style-type: none"> - Final negotiations have been completed with Pic Mobert First Nation, NextBridge, and the Federal Government on securing approvals for access requirements over ATR Lands where the Project requires temporary use. - NextBridge and Pic Mobert First Nation have completed an agreement related to the cultural and historic issues which were raised by the community related to the White Lake and Nursery Lake areas. <ul style="list-style-type: none"> • On October 21, 2020, the Pic Mobert First Nation Chief & Council approved the re-routing of the Project and removed the Stop Work Order on the condition that the Project adhered to a list of mitigation measures. • A notification letter was sent to the MECP on December 3, 2020, which summarizes the activities leading to this outcome, as well as the agreed mitigation measures. • The December 3, 2020, notification letter to the MECP can be found in Section 5, Appendix B. • Construction has commenced in the area. - The Indigenous Facilitator Program ran at full capacity during 4Q 2020, with all seven facilitators participating in observations in the field. NextBridge continued to work with Supercom and partners to ensure ongoing compliance with COVID-19 safety protocols and support increased capacity development and Facilitator readiness for the dynamic Project environment. <ul style="list-style-type: none"> • NextBridge also worked with the Indigenous Facilitators and their communities to orchestrate the delivery of surplus non-merchantable timber to communities. - NextBridge continues to be engaged with the six proximate Bamkushwada Limited Partnership (BLP) communities in many aspects of the Project, including the COVID-19 decision making process. - Notices for community-specific COVID-19 response measures were updated throughout the Reporting Period. <ul style="list-style-type: none"> • NextBridge does not expect impacts to the Project schedule or budget relating to the updated response measures Notices which were publicized in 4Q 2020. • Copies of these Notices can be found in Section 5, Appendix C. - Additional information on this topic can be found in Section 1. C. below.

Key Status	Summary
HONI Coordination	<ul style="list-style-type: none"> - NextBridge continued engagement and coordination activities with HONI on multiple fronts. - Registration was completed for the acquired easements on the Lakehead and Marathon TSs. - HONI is continuing completion of its stakeholder review of the Wawa TS updated design drawings related to the previously identified demarcation of the Project and expansion of their TS footprint which necessitated design changes. <ul style="list-style-type: none"> • NextBridge expects to finalize outstanding items regarding the Wawa TS lands with HONI in 1Q 2021. - Commenced discussions on Connection Facilities Agreement with draft of agreement expected in Q1 2021. - NextBridge continues to coordinate activities with HONI around the updated Project construction schedule. <ul style="list-style-type: none"> • Monthly coordination meetings continue, and standalone meetings are being held as needed. - NextBridge continued discussions with HONI regarding; <ul style="list-style-type: none"> • Outage Scheduling & Crossings; • Overall Project schedule; • Easement Agreements; • Construction & Commissioning coordination; • The latest draft of the Construction Cost Recovery Agreement (CCRA) including NextBridge suggested edits and comments; and, • The CCRA terms and conditions which were provided to HONI with next draft expected in 1Q 2021. - Additional information on this topic can be found in Section 1. C. below.

B. Table of Activities In Work Fronts¹ for the Reporting Period

Work Front	Environmental Permit Submissions	Land-ROW ²	Land-Access ³	Clearing Progress	Construction
1	<ul style="list-style-type: none"> Detailed Project Plan (DPP) package submitted and 30-day review period has concluded. Registration of the easement agreement with HONI for Lakehead TS is complete. 	100%	100%	100%	<ul style="list-style-type: none"> 100% access completed 99% tower assembly completed. 99% tower foundations completed. 99% towers erected. 99% conductor strung.
7	<ul style="list-style-type: none"> DPP package re-submitted⁴ and 30-day review period has concluded. Related permit applications submitted and received. 	100%	100%	99%	<ul style="list-style-type: none"> 97% access completed 79% tower assembly completed. 79% foundations completed. 40% of towers erected.
2	<ul style="list-style-type: none"> DPP Package submitted and 30-day review period has concluded. Related permit applications submitted and received. Minor permit amendments awaiting approval. 	100%	100%	100%	<ul style="list-style-type: none"> 100% access completed. 98% tower assembly completed. 100% foundations completed. 92% towers erected. 72% conductor strung.
6	<ul style="list-style-type: none"> DPP Package submitted and 30-day review period has concluded. All related permit applications have been received. Received MECP approval for amended OBP to support all 	100%	100%	90%	<ul style="list-style-type: none"> 91% access completed 32% tower assembly completed. 38% foundations completed.

¹ This is the currently proposed order of strategic WF execution and is subject to change.

² Percentage of linear distance of route acquired in kilometers. Unencumbered Provincial Crown Land (Unpatented Land, Conservation Reserves, Parks) are assumed secured, but are still subject to receiving Provincial Government approvals.

³ Percentage of parcels with construction access requirements acquired. Construction access requirements on unencumbered Provincial Crown Land (Unpatented Land, Conservation Reserves, Parks) are subject to receiving Provincial Government approvals.

⁴ Comments were received from the MNRF in regards to the submission of the DPP for WF 7 and the DPP package was re-submitted based on this feedback.

Work Front	Environmental Permit Submissions	Land-ROW ²	Land-Access ³	Clearing Progress	Construction
	season access road construction.				
8	<ul style="list-style-type: none"> DPP Package submitted and 30-day review period has concluded. All related permits have been received. 	100%	100%	90%	<ul style="list-style-type: none"> 89% access completed. 72% tower assembly completed. 54% foundations completed. 22% towers erected.
3	<ul style="list-style-type: none"> DPP Package submitted and 30-day review period has concluded. Kama Cliffs Conservation Reserve DPP has been approved. All other related permit applications received. Minor permit amendments awaiting approval. 	100%	100%	100%	<ul style="list-style-type: none"> 100% access completed. 86% tower assembly completed. 93% foundations completed. 68% towers erected. 24% conductor strung.
9	<ul style="list-style-type: none"> DPP Package submitted and 30-day review period has concluded. All related permit applications received. 	100%	100%	99%	<ul style="list-style-type: none"> 99% access completed. 86% towers assembly completed. 88% foundations completed. 59% of towers erected.
5	<ul style="list-style-type: none"> DPP Package submitted and 30-day review period has concluded. All permit applications have been received. All season crossing applications have been approved. Minor permit amendments are awaiting approval. 	100%	100%	100%	<ul style="list-style-type: none"> 96% access completed. 10% foundations completed.

Work Front	Environmental Permit Submissions	Land-ROW ²	Land-Access ³	Clearing Progress	Construction
4	<ul style="list-style-type: none"> DPP Package submitted and 30-day review period has concluded. All MNRF permit applications have been submitted and approved. Minor permit amendments awaiting approval. 	100%	100%	100%	<ul style="list-style-type: none"> 100% access completed. 52% foundations completed.
11	<ul style="list-style-type: none"> DPP Package submitted and 30-day review period has concluded. Permit applications have been submitted and approved. Permit applications have been received. Minor permit amendments are awaiting approval. 	94%	100%	45%	<ul style="list-style-type: none"> 44% access completed.
10	<ul style="list-style-type: none"> DPP Package submitted and 30-day review period has concluded. Permit applications have been submitted. Permit applications have been partially received. Minor permit amendments are awaiting approval. 	100%	100%	17%	<ul style="list-style-type: none"> 49% access completed. 2% foundations completed.

C. Summary of Activities Within Reporting Period

Environment

- Species at Risk (SAR)
 - Received Overall Benefits Permit (OBP) for SAR from the MECP on December 24, 2019.
The OBP included multiple conditions requiring actions to avoid impact to SAR and mitigate for impacts to habitat.
 - The pre-construction conditions are being met and the post construction activities are in the process of being reviewed to understand the scope of the requirements.
 - NextBridge received an amendment to allow all season access to be constructed in caribou nursery habitat December 3, 2020.
 - Although NextBridge does not intend to use all season access this winter, the amendment was obtained to mitigate potential other force majeure events occurring (e.g. increased COVID-19 infections) which could jeopardize the Project schedule.
 - The federal SARA Permit has been received.
- DPPs
 - DPPs have been submitted on all WFs.
 - All DPPs for Provincial Parks and Conservation Reserves have been submitted.
- WF Packages
 - Permit applications for all WFs were submitted.
 - Permits were issued for all WFs.
 - Some minor amendments related to watercourse crossing permits and access changes are being submitted across the Project as the need arises.
 - Continued productive discussions with:
 - MECP on Provincial Parks and Conservation Reserves work and land use permits, etc.; and,
 - MNRF on work and land use permits, etc.
- Permitting Requirements
 - Continued consultation with MECP, MNRF, DFO, CWS and other agencies regarding the Environmental Assessment (EA) and upcoming permitting requirements.
- EA Conditions
 - Internal and contractor resources are ensuring continuous compliance with the conditions of the EA Approval using a comprehensive Construction Compliance Matrix for tracking purposes.

- Environment-Related Indigenous Discussions
 - Continued solicitation and incorporation of feedback and Traditional Ecologic Knowledge information provided by Indigenous communities and agencies.
 - Documented and responded to inquiries received from Indigenous communities with respect to the Project.
- Indigenous Facilitator Program
 - Indigenous Facilitators have been present along the right of way (ROW) since the commencement of construction, up until the temporary suspension of the Indigenous Facilitator Program on March 24, 2020.
 - This measure was taken in response to the evolving COVID-19 Global Pandemic and requirements for social distancing.
 - The program was restructured and fully relaunched in September 2020 with all communities' Facilitators actively engaged in the field.
 - The newly structured program ensures ongoing compliance with COVID-19 protocols and upholds safety as a top priority.
 - NextBridge continues to work with Project partners and Indigenous communities to improve the Indigenous Facilitator Program structure and delivery, and to promote Facilitator capacity and engagement with their respective communities.

Land

- Privately Held Land
 - NextBridge expects to finalize outstanding land agreements regarding the Wawa TS lands with HONI in 1Q 2021.
 - NextBridge is working with land stakeholders to acquire additional property rights to facilitate the W2C (a HONI transmission line) reroute near the Wawa TS.
 - NextBridge is working to mitigate potential impacts to schedule associated with the requirement of these additional property rights.
- Government Land and Permits
 - Obtained remainder of outstanding work permit approvals from the MNRF for WF 11.
 - NextBridge continues to work with the MNRF to amend a Site Plan of Permitted Aggregate Pit on Crown land in WF 5 to allow for the crossing of the Project.
 - An agreement has been reached with the property owner to allow construction to proceed.
 - Following construction, the surrender process for this site will be completed.

- NextBridge worked with the MNRF to support the surrender of certain lands administered by Transport Canada and held by Her Majesty the Queen, in the Right of Canada to the Province of Ontario.
 - The lands are in WF 11 and are needed for the Project.
 - The MNRF expects to complete this process in early 1Q 2021.
- Continued engagement with third party utility and rail companies to support construction activities across the Project.
- 100% of required third party crossings have been secured.
- Worked with Mining Leaseholder for revised Consent to Disposition of Surface Rights to support the revisions required due to concerns raised by the community in the White Lake area.
- NextBridge had been working with an existing Mining Leaseholder to obtain a revised consent to the Disposition of Surface Rights for this location since August 2020.
- NextBridge recently became aware of a sale between the existing Mining Leaseholder for the transfer of land rights to a new Mining Leaseholder in late November 2020.
- NextBridge immediately initiated consultation with the new Mining Leaseholder to obtain a revised consent to the Disposition of Surface Rights to allow construction to proceed.
- NextBridge continues to work expeditiously to obtain the required consent.
- General Updates
 - Continued legal surveys to support the land acquisition and permitting programs.
 - Responded to and tracked directly affected property owner and Crown interest holder inquiries and complaints regarding construction activities.
 - Obtained settlements with property owners and Crown interest holders pertaining to damage and disturbance claims as a result of construction activities.
 - Supported the acquisition of alternate worker camp, storage, and fly site locations required for construction.

Regulatory

- Rate Case
 - On November 4, 2020, NextBridge filed a custom incentive rate-setting application with the OEB, pursuant to section 78 of the *Ontario Energy Board Act*.
 - The OEB issued a Notice of Hearing on December 4, 2020.
 - On December 16, 2020, the OEB issued Procedural Order No. 1, which attached the list of parties in the proceeding and made provision for written interrogatories.

Indigenous Engagement

- Continued Engagement Activities
 - NextBridge has documented and responded to inquiries and questions received from Indigenous communities with respect to the Project.
 - Ongoing engagement has promoted open dialogue with communities.
 - NextBridge is regularly engaged with interested communities consulting on Project permitting, construction progress and other topics that arise during this phase of the Project.
 - Biinjitiwabik Zaaging Anishnabek (BZA) Engagements
 - NextBridge, the Crown, and BZA are in the final stages of negotiations intended to resolve BZA's appeal and judicial review of the issuance to the LTC and OIC to NextBridge.
 - Pic Mobert Engagement
- Final negotiations have been completed with Pic Mobert First Nation, NextBridge, and the Federal Government on securing approvals for access requirements over ATR Lands where the Project requires temporary use.
- NextBridge and Pic Mobert have completed an agreement related to the cultural and historic issues which were raised by the community related to the White Lake and Nursery Lake areas
 - On October 21, 2020, the PMFN Chief & Council approved the re-routing of the Project and removed the Stop Work Order on the condition that the Project adhered to a list of mitigation measures.
 - A notification letter was sent to the MECP on December 3, 2020, which summarizes the activities leading to this outcome, as well as the agreed mitigation measures.
 - The December 3, 2020, notification letter to the MECP can be found in Section 5, Appendix B.
 - Construction has commenced in the area.
 - NextBridge concluded work with Michipicoten First Nation required to secure the Federal permit to traverse the ROW and construction activities commenced on Reserve lands in late-fall 2020.
- Pays Plat Engagements
 - NextBridge concluded the Federal 28.2 permit required to construct the line over Pays Plat Reserve lands in fall 2020.
 - Construction activities have commenced.
- Capacity Funding Agreements (CFAs)
 - CFAs had previously been offered to the 18 identified Indigenous communities to ensure adequate resources to continue with engagement on the Project during the construction phase.
 - Progress has been made on finalizing all agreements, where requested.

In some cases, communities were not interested in additional capacity funding.

- NextBridge continues to provide Project information to communities whether a CFA is in place or not.
- Impacts of COVID-19 Global Pandemic on Indigenous Communities
 - NextBridge continues to engage regularly with Indigenous communities on the impacts of COVID-19.
 - Notices for community-specific COVID-19 response measures were updated throughout the Reporting Period.
 - Copies of these Notices can be found in Section 5, Appendix C.
 - Generally, feedback from Indigenous communities has largely been positive related to the protocols NextBridge has implemented to ensure the safety of communities.

Community/Municipal Engagement

- Continued Engagement Activities
 - Burn notices published in newspapers along the ROW beginning the week of October 19, 2020 for burning to take place from November 1, 2020 to March 31, 2021.
 - Notices also posted on the Project's Facebook Group page and website.
 - Copies of the burn notices can be found in Section 5, Appendix D.
 - The Rate Case application and supporting documentation can be found on the OEB website, https://www.oeb.ca/_html/rds/, under Case Number EB-2020-0150 and was posted on www.NextBridge.ca on November 27, 2020.
 - A Winter 2020 Project newsletter was issued during the week of December 14, 2020, with hard copies distributed to the Project mailing list and electronic copies sent to Indigenous and municipal leaders.
 - The Project Newsletter was also posted on the Project's website and Facebook Group.
 - A copy of the Project Newsletter can be found in Section 5, Appendix E.
 - Construction awareness signs continue to be posted on the ROW as construction crews progress and gain access.
 - The Project's Facebook Group continues to grow steadily with approximately 145 members as of the end of Reporting Period.
 - The Project's email address and hotline is monitored for inquiries, and all inquiries have been answered.
- Complaint Resolution Process
 - No formal complaints were submitted during this Reporting Period.

Engineering & Construction

- Materials
 - All deliveries of conductor, Optical Ground Wire, Overhead Ground Wire, and transmission towers are on track.
 - The White Lake Narrows crossing tower design has been completed.
 - After the new body extensions are manufactured and prototyped, the towers will be shipped to the Project site.
- Construction
 - Construction activities are ongoing in every WF across the Project.
 - Clearing and access crews have been working since the permitting window opened on September 1, 2020.
 - Heavy rains coupled with above seasonal temperatures in November and December resulted in crews having to temporarily demobilize from many locations to allow for site conditions to improve.
 - NextBridge continues to expect all clearing and access work to be completed by Spring 2021.
 - Access crews were able to construct a large quantity of winter roads in the caribou nursery habitat area during December 2020.
 - In early January 2021, most workers will be mobilized to the caribou nursery habitat area.
 - All foundations and assembly work are expected to be completed in the caribou nursery habitat area by the spring breakup, and tower erection will continue.
 - It is unlikely stringing activities will be completed in the caribou nursery habitat area this winter and is scheduled to be completed next winter.
 - Stringing activities have been completed in WF 1 with the exception of the two-structure span into the Lakehead TS which is scheduled for completion with the assistance of HONI in February 2022.
 - Stringing is presently ongoing in WFs 2 and 3 with completions of 72% and 24%, respectively.
 - Crews will continue to string from the West to East side of the Project.
 - Crews have completed approximately 84 km of conductor installation on over 200 structures.
- Detailed Engineering
 - Transmission line design Issued for Construction Review packages for all WFs have been issued.
 - Issued for Construction packages are being issued as ROW is cleared and ground-truthing is being performed.
 - NextBridge is developing a plan to measure the high frequency tower resistance on a sample size of towers in order to validate grounding assumptions.

- The initial campaign is expected to take place in 2Q 2021.
- NextBridge is working with vendors to supply lighting and marking for 35 towers which was prescribed by Transport Canada.
 - NextBridge requested and has received rationale from Transport Canada confirming its newly proposed requirements.
 - Transport Canada's newly proposed requirements are related to the installation of lights and application of safety paint on a selection of towers.
 - Through a competitive bidding process Drake Lighting has been selected to supply and install the tower lights prescribed by Transport Canada.
 - The majority of these lights fall under the Canadian Aviation Regulations SOR/96-433 Part VI General Operating and Flight Rules-601.25 and are required at the discretion of the Minister who has determined these towers to be hazardous to air navigation.
- Conducting a feasibility study of a potential bypass of a HONI transmission line (The W2C Line) outside of the Wawa TS to mitigate the need for an extended outage period.
 - Due to HONI operating constraints, back to back outages are not allowed.

Coordination Efforts with HONI

- Status and Changes to Access Road and Transmission Line Crossings
 - Continued engagement with HONI to acquire necessary land rights and/or obtain permits.
 - Met with HONI and IESO regarding overhead transmission line crossing designs and outages.
 - Completed registration of the land agreements associated with Lakehead and Marathon TS.
 - The land agreement associated with the Project's connecting to the Wawa TS is outstanding. NextBridge expects to finalize items related to the Grant of Easement for the Wawa TS lands with HONI by the end of 1Q 2021.
 - NextBridge revised design drawings to incorporate HONI feedback for connecting to the Wawa TS, which has delayed the approval of this land agreement.
 - HONI is continuing its stakeholder review of the Wawa TS updated design drawings related to the previously identified demarcation of the Project and expansion of their TS footprint which necessitated design changes for how the Project connects to the Wawa TS and the easement related to the use of HONI TS lands.
 - This issue has delayed the finalization of land rights for the EWT Project on the Wawa TS lands, but the delay is not expected to impact Project schedule at this time.
 - Work sequence has been adjusted to address timing of land agreements and no schedule impacts are expected as a result of this outcome.

- Overview of Key Negotiations, Agreements, and Coordination Efforts Between NextBridge and HONI
 - Continued discussions related to HONI's Staging Plan, which includes the coordination of facility upgrades and commissioning scheduling with transmission line termination construction.
 - Discussions with HONI regarding the negotiation of the Construction Cost Recovery Agreement (CCRA).
 - NextBridge and HONI continued reviewing feedback and comments on the preliminary draft of the CCRA.
 - The CCRA and associated Terms and Conditions are under internal review and will undergo additional reviews by both parties in 1Q 2021.
 - Commenced discussions on Connection Facilities Agreement.
 - September 2021 is the current completion target date for the Connection Facilities Agreement, as discussed with HONI.
- Other Material Developments, Issues, or Risks Related to the Coordination Between NextBridge and HONI

Risks related to the coordination efforts between NextBridge and HONI can be found below in Section 4. A.

Registration Process with IESO

- NextBridge started the entity registration process with IESO as required by the IESO membership rules.
 - Target date for completion of registration process is in 1Q 2021.

COVID-19 Global Pandemic

- On March 23, 2020, NextBridge provided an Intermediate Notice to the Board that, in order to help contain the spread of COVID-19, NextBridge was temporarily closing the work camps associated with the construction of the Project for the safety and health of the workers.
- After additional discussions with the local municipalities and Indigenous communities in Northwestern Ontario regarding the possible spread of COVID-19 and its potential impact on the safety and health of its workers and communities, NextBridge decided to temporarily suspend all construction activities as of April 3, 2020.
- NextBridge, in consultation with local municipalities and Indigenous communities and under the advisement of local health authorities, resumed limited construction activities on May 19, 2020.
- NextBridge has since resumed all construction activities on the Project, and, subsequently, in accordance with Conditions 2 and 3 of the Leave to Construct Order, filed a Notice of In-Service

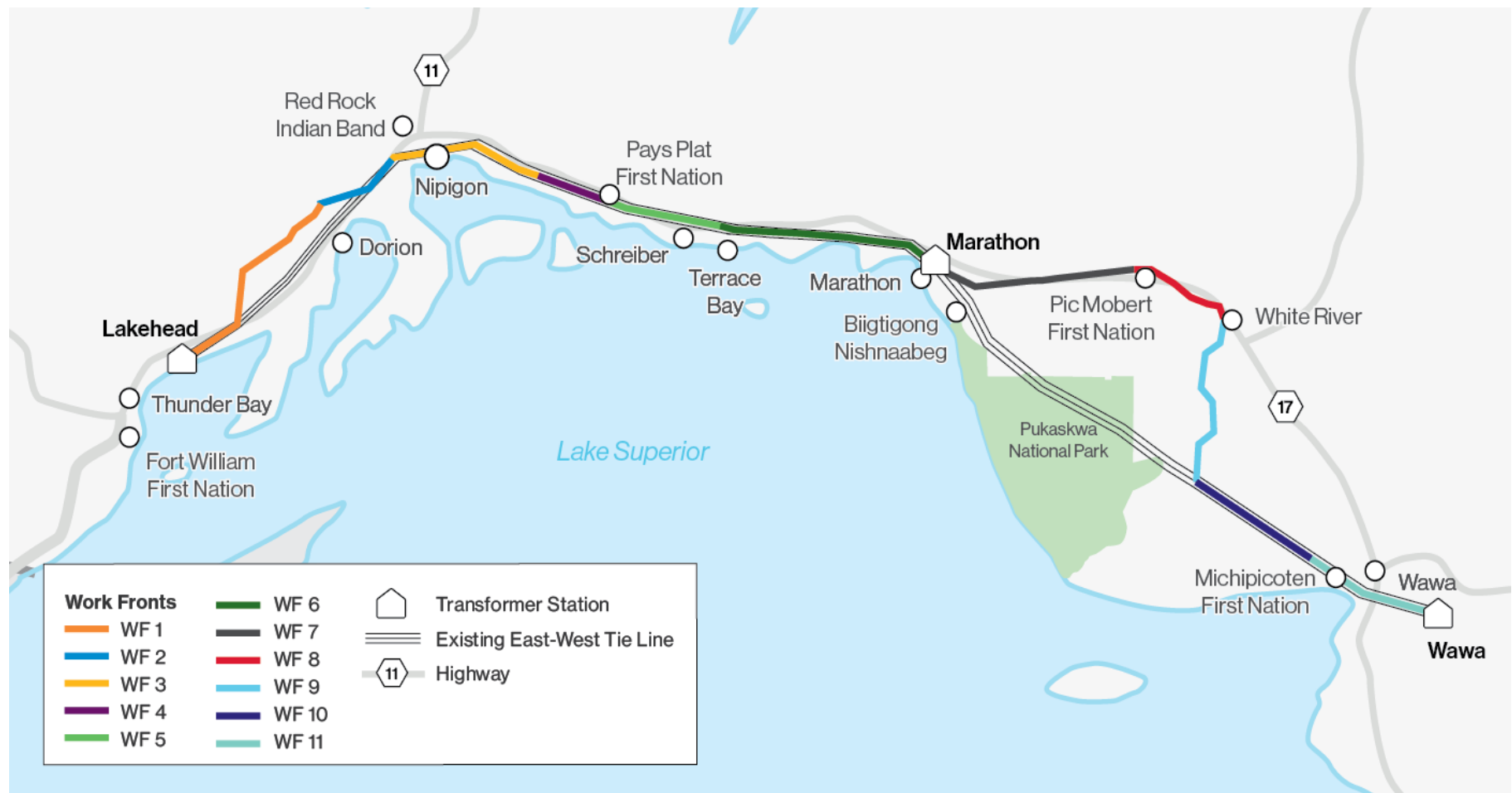
Date Change advising the OEB of a change in construction schedule to reflect a change to the in-service date from Q4 2021 to March 31, 2022, based on an updated construction schedule.

- NextBridge is tracking incremental construction costs related to the COVID-19 Global Pandemic and requested the Board to approve the creation of a subaccount of Account 2055 to do so in its April 22, 2020 letter to the Board.

Risks related to the COVID-19 Global Pandemic can be found below in Section 4. A.

2. Construction Schedule Update

A. Project Map



B. Milestone Updates Table

NextBridge undertook an internal scheduling exercise to reflect a new construction schedule based on the new proposed in-service date (ISD).

The following updated construction schedule resulted from this internal scheduling exercise, and was subsequently shared with HONI on October 5, 2020, to support alignment of Project schedules. NextBridge and HONI have continued regular update meetings to ensure that their respective schedules will be aligned to meet a March 31, 2022 ISD.

Activity	Post-LTC Decision Baseline Target Date	Proposed Revised Dates Based on New ISD	Variance Reason/Potential Impact
Regulatory			
Oral Hearing Start	Completed		
OEB LTC Decision and Order	Completed		
OEB approval of authority to expropriate	September 2019		- Completed in 3Q 2019
Register approved Plan of Expropriation and issue relevant Expropriation Act Notices/Others	December 2019		- Completed in 1Q 2020
Obtain possession of expropriated lands for construction purposes	March 2020		- Completed in 1Q 2020
Environmental⁵			
Approval of the Amended EA	Completed		
Approval by MECP of ECA - Camp Wastewater	2Q 2020		- ECA – Camp Wastewater is no longer required.
Approval by MNRF of Water Crossing Permits	3Q 2019 to Q1 2020	4Q 2020	- Completed in 4Q 2020

⁵ Apart from the EA which has been issued, based on the WF approach to construction, not all permits are needed at start of construction on the Project as some WFs will have all necessary permits to start construction.

Activity	Post-LTC Decision Baseline Target Date	Proposed Revised Dates Based on New ISD	Variance Reason/Potential Impact
			- Water crossing amendment applications are being submitted on an as needed basis as construction starts in new WFs.
Approval by MECP of Species at Risk Permits (Bat maternity roosts, Eastern whip-poor-will)	3Q 2019		- Completed in 3Q 2019
Approval by MECP of Species at Risk Permits (Caribou, Bat hibernacula)	4Q 2019		- Completed in 4Q 2019
Approval of ECCC SARA Bat hibernacula and caribou permit	4Q 2019		- Completed in 3Q 2020
Approval of MECP Provincial Park & Conservation Reserve Management Plan Amendments	4Q 2019		- Completed in 4Q 2019
Lakehead Region Conservation Authority Permit	3Q 2019		- Completed in 3Q 2019
Transport Canada Section 67 for Transport Canada Lands	3Q-4Q 2019	4Q 2020	- Completed in 4Q 2020
Transport Canada Navigation Protection Act Canada permit	3Q-4Q 2019		- Completed in 3Q 2020.
Fisheries and Oceans Canada Letters of Advice	3Q 2019 to 1Q 2020		- Completed in 3Q 2020.
Indigenous Service Canada Section 67 for Reserve Lands	3Q-4Q 2019		- Completed in 3Q 2020.
Infrastructure Ontario Class Environmental Assessment	4Q 2019		- Completed in 1Q 2020.
MHSTCI– Heritage, Sport, Tourism and Cultural Industries acceptance	4Q 2019	4Q 2021	- Additional archeological monitoring is required in the White Lake Narrows area during construction activities in 2021. - Revised milestone date not anticipated to impact construction schedule.

Activity	Post-LTC Decision Baseline Target Date	Proposed Revised Dates Based on New ISD	Variance Reason/Potential Impact
Land Acquisition			
Substantial completion of signing of option agreements	Completed		
Crown Land Disposition Application filed	3Q-4Q 2019		- Completed in 4Q 2019
Third party Crossing agreements complete	3Q-4Q 2019		- Completed in 3Q 2020.
MNRF approval of Crown Lease/Land Use Permits	3Q 2019 to 1Q 2020		- Completed in 2Q 2020.
MNRF approval of Crown Land Work Permits	3Q 2019 to 1Q 2020		- Completed in 3Q 2020.
MTO approval of Land Use and Building Permits	3Q-4Q 2019		- Completed in 1Q 2020.
MTO approval of Entrance Permits	3Q-4Q 2019		- Completed in 1Q 2020.
MTO approval of Encroachment Permits	3Q-4Q 2019		- Completed in 1Q 2020.
Indigenous Relations			
Indigenous Service Canada (ISC) approval of Land Related Permits	4Q 2019	4Q 2020	- Approval received in 4Q 2020.
HONI - Related			
HONI approves Longitudinal Access	3Q 2019		- Completed in 3Q 2019.
HONI Approves Transmission Crossing Application	3Q 2019	4Q 2020	- Completed in 4Q 2020.
NextBridge files Sec 101 Application (If not approved by HONI)	4Q 2019	4Q 2020	- Section 101 application will likely no longer be required.
HONI Substations commissioned ⁶	4Q 2021	TBD	- The coordination of schedules with HONI is underway.

⁶ Per Exhibit B, Tab 11, Schedule 1 of Hydro One Station work LTC application.

Activity	Post-LTC Decision Baseline Target Date	Proposed Revised Dates Based on New ISD	Variance Reason/Potential Impact
			- The revised date will be populated once it has been confirmed by HONI.
Engineering & Construction			
Commence Clearing & Access	3Q 2019		- Commenced in 3Q 2019.
Commence Geotech and Foundations	4Q 2019		- Commenced in 4Q 2019.
Commence Towers Assembly	4Q 2019		- Commenced in 4Q 2019.
Commence Towers Erection	1Q 2020		- Commenced in 1Q 2020.
Commence Conductor Stringing	2Q 2020		- Commenced in 3Q 2020.
Work Front 1 - Commence Clearing & Access	3Q 2019		- Commenced in 3Q 2019.
Work Front 1 - Commence Geotech and Foundations	4Q 2019		- Commenced in 4Q 2019.
Work Front 1 - Commence Towers Assembly	4Q 2019		- Commenced in 4Q 2019.
Work Front 1 - Commence Towers Erection	1Q 2020		- Commenced in 1Q 2020.
Work Front 1 - Commence Conductor Stringing	1Q 2020		- Commenced in 3Q 2020.
Work Front 2 - Commence Clearing & Access	1Q 2020		- Commenced in 1Q 2020.
Work Front 2 - Commence Geotech and Foundations	1Q 2020		- Commenced in 2Q 2020.
Work Front 2 - Commence Towers Assembly	1Q 2020		- Commenced in 2Q 2020.
Work Front 2 - Commence Towers Erection	1Q 2020		- Commenced in 3Q 2020.
Work Front 2 - Commence Conductor Stringing	2Q 2020	4Q 2020	- Commenced in 4Q 2020.
Work Front 3 - Commence Clearing & Access	1Q 2020		- Commenced in 1Q 2020.
Work Front 3 - Commence Geotech and Foundations	1Q 2020		- Commenced in 2Q 2020.
Work Front 3 - Commence Towers Assembly	2Q 2020		- Commenced in 2Q 2020.
Work Front 3 - Commence Towers Erection	2Q 2020		- Commenced in 3Q 2020.
Work Front 3 - Commence Conductor Stringing	3Q 2020	3Q 2021	- Commenced in 4Q 2020.
Work Front 4 - Commence Clearing & Access	2Q 2020		- Commenced in 3Q 2020.
Work Front 4 - Commence Geotech and Foundations	2Q 2020	2Q 2021	- Commenced in 4Q 2020.

Activity	Post-LTC Decision Baseline Target Date	Proposed Revised Dates Based on New ISD	Variance Reason/Potential Impact
Work Front 4 - Commence Towers Assembly	3Q 2020	2Q 2021	- Commenced in 4Q 2020.
Work Front 4 - Commence Towers Erection	3Q 2020	3Q 2021	-
Work Front 4 - Commence Conductor Stringing	3Q 2020	4Q 2021	-
Work Front 5 - Commence Clearing & Access	1Q 2020		- Commenced in 1Q 2020.
Work Front 5 - Commence Geotech and Foundations	1Q 2020		- Commenced in 2Q 2020.
Work Front 5 - Commence Towers Assembly	4Q 2020	1Q 2021	-
Work Front 5 - Commence Towers Erection	1Q 2021	1Q 2021	-
Work Front 5 - Commence Conductor Stringing	1Q 2021	4Q 2021	-
Work Front 6 - Commence Clearing & Access	1Q 2020		- Commenced in 1Q 2020.
Work Front 6 - Commence Geotech and Foundations	1Q 2020		- Commenced in 1Q 2020.
Work Front 6 - Commence Towers Assembly	1Q 2020		- Commenced in 1Q 2020.
Work Front 6 - Commence Towers Erection	1Q 2020	1Q 2021	-
Work Front 6 - Commence Conductor Stringing	3Q 2020	1Q 2022	-
Work Front 7 - Commence Clearing & Access	1Q 2020		- Commenced in 4Q 2019.
Work Front 7 - Commence Geotech and Foundations	2Q 2020		- Commenced in 1Q 2020.
Work Front 7 - Commence Towers Assembly	3Q 2020		- Commenced in 1Q 2020.
Work Front 7 - Commence Towers Erection	3Q 2020		- Commenced in 3Q 2020.
Work Front 7 - Commence Conductor Stringing	4Q 2020	2Q 2021	-
Work Front 8 - Commence Clearing & Access	1Q 2020		- Commenced in 1Q 2020.
Work Front 8 - Commence Geotech and Foundations	3Q 2020		- Commenced in 3Q 2020.
Work Front 8 - Commence Towers Assembly	4Q 2020		- Commenced in 3Q 2020.
Work Front 8 - Commence Towers Erection	4Q 2020	2Q 2021	- Commenced in 4Q 2020.
Work Front 8 - Commence Conductor Stringing	1Q 2021	3Q 2021	-
Work Front 9 - Commence Clearing & Access	1Q 2020		- Commenced in 1Q 2020.
Work Front 9 - Commence Geotech and Foundations	3Q 2020		- Commenced in 3Q 2020.
Work Front 9 - Commence Towers Assembly	4Q 2020		- Commenced in 3Q 2020.

Activity	Post-LTC Decision Baseline Target Date	Proposed Revised Dates Based on New ISD	Variance Reason/Potential Impact
Work Front 9 - Commence Towers Erection	4Q 2020	3Q 2021	- Commenced in 4Q 2020.
Work Front 9 - Commence Conductor Stringing	2Q 2021	3Q 2021	-
Work Front 10 - Commence Clearing & Access	3Q 2020		- Commenced in 3Q 2020.
Work Front 10 - Commence Geotech and Foundations	3Q 2020	2Q 2021	- Commenced in 4Q 2020.
Work Front 10 - Commence Towers Assembly	4Q 2020	3Q 2021	-
Work Front 10 - Commence Towers Erection	1Q 2021	4Q 2021	-
Work Front 10 - Commence Conductor Stringing	3Q 2021	4Q 2021	-
Work Front 11 - Commence Clearing & Access	3Q 2020		- Commenced in 3Q 2020
Work Front 11 - Commence Geotech and Foundations	3Q 2020	1Q 2021	-
Work Front 11 - Commence Towers Assembly	1Q 2021	1Q 2021	-
Work Front 11 - Commence Towers Erection	2Q 2021	4Q 2021	-
Work Front 11 - Commence Conductor Stringing	3Q 2021	1Q 2022	-
Project Construction Substantially Complete	4Q 2021	1Q 2022	-
Project Commissioning Commences	4Q 2021	1Q 2022	-
Project Commissioning Complete - In Service	4Q 2021	1Q 2022	-
Final acceptance and release of General Contractor	4Q 2021	1Q 2022	-

C. Permit and Approval/Authorization Requirements by Work Front Table

Work Front	Remaining Major Permits and Approvals/Authorizations ⁷	Original Target Date Reported in 1 st OEB Quarterly Report	Revised Target Date	Variance Reason/Potential Impact
1	0 Species at Risk 0 Water Body Crossings 0 Overhead Crossings 0 Work Permit and Land Use Permit 0 Access	September 2019		- No major permits or approvals/authorizations outstanding in this WF at this time.
7	0 Species at Risk 0 Water Body Crossings 0 Overhead Crossings 0 Work Permit and Land Use Permit 0 Access	September 2019		- No major permits or approvals/authorizations outstanding in this WF at this time. - Known schedule impacts have been assessed and incorporated into the updated construction schedule.
2	0 Species at Risk 0 Water Body Crossings 0 Overhead Crossings 0 Work Permit and Land Use Permit 0 Access	September 2019		- No major permits or approvals/authorizations outstanding in this WF at this time. - Known schedule impacts have been assessed and incorporated into the updated construction schedule.

⁷ The number of Major Permits and Approvals/Authorizations are subject to change as access plans evolve.

Work Front	Remaining Major Permits and Approvals/Authorizations ⁷	Original Target Date Reported in 1 st OEB Quarterly Report	Revised Target Date	Variance Reason/Potential Impact
6	0 Species at Risk Amendment (including Caribou) 0 Water Body Crossings 0 Overhead Crossings 0 Work Permit and Land Use Permit 1 Phase I ESA 0 Access	December 2019	May 2020 → January 2021	<ul style="list-style-type: none"> - No major permits or approvals/authorizations outstanding in this WF at this time. - Received agency approval of amended Overall Benefit Permit to allow construction of all-season access roads if needed. - NextBridge does not intend to use all season access this winter. - The amendment was obtained to mitigate against other force majeure events occurring which could jeopardize the Project schedule. - Known schedule impacts have been assessed and incorporated into the updated construction schedule.
8	0 Species at Risk 0 Water Body Crossings 0 Overhead Crossings 0 Work Permit and Land Use Permit 1 Access	September 2019	November 2020 → January 2021	<ul style="list-style-type: none"> - Awaiting revised consent to Disposition of Surface Rights with new Mining Leaseholder. - Known schedule impacts have been assessed and incorporated into the updated construction schedule.
3	0 Species at Risk 0 Water Body Crossings 0 Overhead Crossings	September 2019	October 2020 → January 2021	<ul style="list-style-type: none"> - No major permits or approvals/authorizations outstanding in this WF at this time.

Work Front	Remaining Major Permits and Approvals/Authorizations ⁷	Original Target Date Reported in 1 st OEB Quarterly Report	Revised Target Date	Variance Reason/Potential Impact
	0 Work Permit and Land Use Permit 1 Phase I ESA 0 Access			- Known schedule impacts have been assessed and incorporated into the updated construction schedule.
9	0 Species at Risk 0 Water Body Crossings 0 Overhead Crossings 0 Work Permit and Land Use Permit 0 Access	September 2019		- No major permits or approvals/authorizations outstanding in this WF at this time. - Known schedule impacts have been assessed and incorporated into the updated construction schedule.
5	0 Species at Risk 1 Water Body Crossings 0 Overhead Crossings 1 Work Permit and Land Use Permit 0 Access	December 2019	October 2020→ January 2021	- Awaiting necessary provincial permits and approvals. - Known schedule impacts have been assessed and incorporated into the updated construction schedule.
4	0 Species at Risk 2 Water Body Crossings 0 Overhead Crossings 2 Work Permit and Land Use Permit 0 Access	November 2019	October 2020→ January 2021	- Awaiting necessary provincial permits and approvals. - Known schedule impacts have been assessed and incorporated into the updated construction schedule.

Work Front	Remaining Major Permits and Approvals/Authorizations ⁷	Original Target Date Reported in 1 st OEB Quarterly Report	Revised Target Date	Variance Reason/Potential Impact
11	0 Species at Risk 1 Water Body Crossings 0 Overhead Crossings 1 Work Permit and Land Use Permit 2 Access	December 2019	October 2020→ January 2021	<ul style="list-style-type: none"> - Awaiting necessary provincial permits and approvals. - Known schedule impacts have been assessed and incorporated into the updated construction schedule.
10	0 Species at Risk 0 Water Body Crossings 0 Overhead Crossings 0 Work Permit and Land Use Permit 0 Access	November 2019		<ul style="list-style-type: none"> - No major permits or approvals/authorizations outstanding in this WF at this time. - Known schedule impacts have been assessed and incorporated into the updated construction schedule.

3. Construction Cost Update

A. Project Cost Update Summary

Construction costs for the EWT Project are forecasted to be on budget when compared to the LTC application budget. While increases have been identified in certain budget areas, the use of the previously-budgeted value for contingency allows for sufficient allocation of funds to address areas where budget increases were identified. However, at this point in time the total costs related to the COVID-19 Global Pandemic are unknown.

B. Project Cost Update Table

Cost Categories for NextBridge's Construction Costs Reporting		Actuals Spent		Budget			Forecast Budget Variance		
		A Spent This Reporting Period \$	B Total Spent To Date \$	C Budget Per LTC Application \$	D=C-B Budget Remaining	E=D/C*100 Budget Remaining %	F Forecast Budget Change \$	G Forecast Budget Change %	H Revised Total Budget
Engineering & Construction		89,396,704	395,393,413	572,761,388	177,367,975	31%	41,505,901	7%	614,267,289
1	Engineering, Design and Procurement	566,597	7,284,755	19,342,245	12,057,490	62%	(10,808,892)	-56%	8,533,353
2	Materials and Equipment	15,610,865	57,972,799	89,408,231	31,435,432	35%	(22,538,717)	-25%	66,869,514
8	Site Clearing, Access	32,542,786	116,207,404	107,463,339	(8,744,065)	-8%	33,169,524	31%	140,632,863
9	Construction	40,676,455	213,928,455	356,547,573	142,619,118	40%	41,683,986	12%	398,231,559
Environmental & Remediation Activities		887,757	17,206,744	26,929,260	9,722,516	36%	4,620,902	17%	31,550,162
3	Environmental and Regulatory Approvals	849,566	16,552,092	13,030,561	(3,521,531)	-27%	6,066,463	47%	19,097,024
10	Site Remediation	38,191	654,652	13,898,699	13,244,047	95%	(1,445,561)	-10%	12,453,138
Indigenous Activities		1,942,368	17,549,321	20,211,000	2,661,679	13%	3,442,555	17%	23,653,555
5	Indigenous Economic Participation	961,902	7,629,102	7,000,000	(629,102)	-9%	2,730,452	39%	9,730,452
6	Indigenous Consultation	980,466	9,920,218	13,211,000	3,290,782	25%	712,103	5%	13,923,103
4	Land Rights (excludes Aboriginal)	1,153,176	17,931,382	23,830,512	5,899,130	25%	0	0%	23,830,512
7	Other Consultation	75,403	1,212,080	2,530,194	1,318,114	52%	0	0%	2,530,194
11	Contingency	-	-	49,399,445	49,399,445	100%	(49,399,445)	-100%	-
12	Regulatory	229,820	4,105,487	5,405,078	1,299,591	24%	(0)	0%	5,405,078
13	EWT Management	156,602	4,238,388	4,900,644	662,256	14%	(0)	0%	4,900,644
Total Project Spend		93,841,829	457,636,814	705,967,521	248,330,707	35%	169,913	0%	706,137,434
14	Interest During Construction (IDC) ¹	2,218,412	13,050,442	31,003,000	17,952,558	58%	-	0%	31,003,000
Total Construction Costs^{2,3,4}		96,060,241	470,687,256	736,970,521	266,283,265	36%	169,913	0%	737,140,434

1 IDC has not been reforecasted as interest rates will vary based on the OEB prescribed rates

2 On the record (EB-2017-0182)

3 Development Costs eligible for consideration as construction costs of \$5.3 MM not reflected in column B. (OEB Decision, December 20, 2018)

4 Construction related costs due to COVID-19 are not included in the table above; as of Q4 2020, \$0.4M has been incurred

C. Project Cost Update Summary by Department

Engineering & Construction (E&C)

- The Project cost forecast for this department has not changed since the last reporting period.

Environment & Remediation Activities

- The Project cost forecast for this department has not changed since the last reporting period

Indigenous Activities

- The Project cost forecast for this department has not changed since the last reporting period.

Land Rights (Excludes Aboriginal Engagement)

- The Project cost forecast for this department has not changed since the last reporting period.

Other Consultation

- The Project cost forecast for this department has not changed since the last reporting period.

Regulatory

- The Project cost forecast for this department has not changed since the last reporting period.

EWT Management

- The Project cost forecast for this department has not changed since the last reporting period.

D. OEB Consultation on the Deferral Account – Impacts Arising from the COVID-19 Emergency

- On April 22, 2020, NextBridge requested that the OEB issue an order approving a subaccount to Construction Work in Progress – Electric (CWIP) account 2055 to track COVID-19 costs.
- NextBridge has requested that the subaccount be made effective March 23, 2020 when NextBridge first notified the Board of the impact of COVID-19 on construction.
- On May 28, 2020, NextBridge participated in the preliminary stakeholder meeting hosted by the OEB.
- On June 11, 2020, NextBridge submitted written comments on the draft issues list requesting that the OEB add an issue regarding what account should be used for distributors and transmitters currently constructing capital projects.
- On August 14, 2020, the OEB issued an Issues List in letter sent to all registered stakeholders concerning the Consultation of the Deferral Account – Impacts Arising from the COVID-19 Emergency.
- On September 24, 2020, the OEB issued a letter to all Licensed Electricity Distributors and Transmitters and all Rate-Regulated Natural Gas Distributors which notified recipients of the commissioning of two expert studies, one of which is applicable to the Project;
 - London Economics International (LEI) will be undertaking a *COVID-19 Impact Study* to assess the near- and long-term impacts of the COVID-19 pandemic on Ontario's energy sector and identify implications for the OEB's regulatory policy response to energy sector evolution.
- On December 16, 2020, the OEB issued a letter to all Registered Stakeholders and all Other Interested Parties which notified recipients of an OEB Staff proposal
 - Stakeholders were invited to provide comments on the OEB Staff proposal and provided with next steps in the integrated consultations process.

4. Risk Management

A. Risk Management Issues, Potential Impacts and Mitigation Measures

Risk Item #	Risk Description	Likelihood of Risk Occurring (High, Medium, Low)	Description of Impact of the Risk on the Project	Risk on the Project (High, Medium, Low)	Mitigation of Risk and/or Impact
1	Agency delay in issuance of other environmental permit(s)		<ul style="list-style-type: none"> Recent office closures and remote work environments due to the COVID-19 global pandemic has slowed permit issuance. 		<ul style="list-style-type: none"> WF approach is designed to allow staggered issuance of permit approvals to facilitate staging of the start of construction in multiple segments simultaneously. Modified work sequence to maintain clearing activities, foundation installation, and tower assembly progress. Delays experienced to date were analyzed as part of the updated scheduling exercise to determine if there were any schedule impacts to the construction schedule. The updated construction schedule can be found in Section 2.B. and potential cost impacts have been incorporated in Section 3.A.

*Change in colour level from previous Report is denoted with arrows where "↑" indicates an increase in risk and "↓" indicates a decrease in risk.

Low

Medium /
Moderate

High

Unknown

Risk Item #	Risk Description	Likelihood of Risk Occurring (High, Medium, Low)	Description of Impact of the Risk on the Project	Risk on the Project (High, Medium, Low)	Mitigation of Risk and/or Impact
2	Delay in access to private, provincial, and federal lands		<ul style="list-style-type: none"> If lands not accessible in time for construction commencement date, it will affect Project schedule. <ul style="list-style-type: none"> Private lands not accessible through expropriation. Public lands not accessible through MNRF process. Federal lands not accessible through Reserve crossing permits. 		<ul style="list-style-type: none"> Pursue regulatory avenues available (e.g., expropriation with OEB, provincial mining recorder order) where access is not granted. Establish work around/ accommodation plan for “no access” parcels in construction planning. Work with government on public and federal land access.
3	Delay in HONI station work		<ul style="list-style-type: none"> If stations are not ready for energization, it will delay Project in-service date. 		<ul style="list-style-type: none"> Communication and coordination with HONI during construction. Updated construction schedule and shared with HONI in 4Q 2020. Schedule coordination with HONI continues. HONI will report to the OEB on any updates to its station work schedule.

*Change in colour level from previous Report is denoted with arrows where “↑” indicates an increase in risk and “↓” indicates a decrease in risk.

Low

Medium /
Moderate

High

Unknown

Risk Item #	Risk Description	Likelihood of Risk Occurring (High, Medium, Low)	Description of Impact of the Risk on the Project	Risk on the Project (High, Medium, Low)	Mitigation of Risk and/or Impact
4	Delay in accessing HONI's crossings of access roads and transmission lines		<ul style="list-style-type: none"> If significant portions of lands not accessible in time for access road construction and stringing across HONI ROW lands, it will affect Project schedule. 		<ul style="list-style-type: none"> Continue to work with HONI and IESO to resolve crossing and access issues. While a Section 101 application will likely not be required, this option remains in the event that NextBridge is unable to reach agreement on all required crossings.

Risk Item #	Risk Description	Likelihood of Risk Occurring (High, Medium, Low)	Description of Impact of the Risk on the Project	Risk on the Project (High, Medium, Low)	Mitigation of Risk and/or Impact
5	Legal challenges	High	<ul style="list-style-type: none"> Parties may file applications for judicial review or appeal of OEB decisions or other permit approvals and seek to stay construction. Risk has materialized, as BZA First Nation has filed both a judicial review of the Jan 30, 2019 Order in Council and an appeal of the Dec 20, 2018 and Feb 11, 2019 OEB decisions. There may be some cost risk involved with defending these legal challenges. 	High	<ul style="list-style-type: none"> Continue to proactively engage with First Nation and Métis communities, landowners and all other stakeholders in order to identify and address concerns. Actively engaged in continued negotiations with BZA related to the judicial review and appeal. Commit to addressing concerns at any point, even post issuance of permits and engage communities on an issue by issue basis.
6	Public protests and/or displays of Project opposition	Medium	<ul style="list-style-type: none"> Potential for reputational impacts but is unlikely to prevent Project schedule given provincial approvals have been obtained. Potential for reputation impact of continuing construction activities during COVID-19 Potential for reputation impact 	Medium	<ul style="list-style-type: none"> Additional discussion and attempts to satisfy concerns. Attentive and responsive to local needs related to COVID-19, so there is not a premature closure of work camps and temporary suspension of construction and continue to have NextBridge viewed favourably by local communities.

*Change in colour level from previous Report is denoted with arrows where "↑" indicates an increase in risk and "↓" indicates a decrease in risk.

Low

Medium /
Moderate

High

Unknown

Risk Item #	Risk Description	Likelihood of Risk Occurring (High, Medium, Low)	Description of Impact of the Risk on the Project	Risk on the Project (High, Medium, Low)	Mitigation of Risk and/or Impact
			related to burning of wood on ROW.		<ul style="list-style-type: none"> Detailed Management Plan developed by Valard coupled with consultation with the Thunder Bay Public Health Unit and Algoma Public Health and local Indigenous and non-Indigenous communities along the Project route which provided confidence that appropriate measures being taken to protect communities and workers. Timely and effective response to concerns regarding wood burning activities on the ROW through media statements and direct communication with communities.
7	Labour strikes		<ul style="list-style-type: none"> Potential for labour actions and disruption/shutdown of construction activities, which could lead to cost and schedule impacts. Potential for media coverage and undesirable project optics. 		<ul style="list-style-type: none"> Follow Project labour protocols as per master agreement with Canadian Union of Skilled Workers (CUSW). Foster and maintain good relations and communication with CUSW and its members. Be cognizant of and manage potential for other unions to approach and recruit any non-CUSW members. Media response would be developed

*Change in colour level from previous Report is denoted with arrows where "↑" indicates an increase in risk and "↓" indicates a decrease in risk.

Page 39 of 64

Low

Medium /
Moderate

High

Unknown

Risk Item #	Risk Description	Likelihood of Risk Occurring (High, Medium, Low)	Description of Impact of the Risk on the Project	Risk on the Project (High, Medium, Low)	Mitigation of Risk and/or Impact
					to provide public response as appropriate.
8	COVID-19 Global Pandemic		<ul style="list-style-type: none"> Global Pandemic caused the shutdown of work camps and temporary suspension of construction activities which are expected to lead to cost and schedule impacts. The Global Pandemic is ongoing, and duration is unknown. Potential for workers testing positive for COVID-19, while working in communities where health facilities are limited. Communities make decisions specific to their conditions which could impact the workers available for Project construction and also impact Project schedule. Examples of community 		<ul style="list-style-type: none"> Developed COVID-19 Task Force to ensure the safety of staff, contractors, subcontractors, partners, and the general public, and mitigate the impacts of the pandemic on the Project. All construction activities continued through 4Q 2020. Working with tower vendor to mitigate potential delivery delay impacts. Indigenous and stakeholder engagement continues in order to address concerns as they arise. The risk to the construction schedule is expected to be mitigated through the updated ISD date; however, the duration and total associated impacts of the COVID-19 Global Pandemic are unknown at this time.

*Change in colour level from previous Report is denoted with arrows where "↑" indicates an increase in risk and "↓" indicates a decrease in risk.

Page 40 of 64

Low

Medium /
Moderate

High

Unknown

Risk Item #	Risk Description	Likelihood of Risk Occurring (High, Medium, Low)	Description of Impact of the Risk on the Project	Risk on the Project (High, Medium, Low)	Mitigation of Risk and/or Impact
			notices can be found in Section 5 Appendix C		
9	Difficulty to obtain timely outages to cross existing transmission lines		<ul style="list-style-type: none"> The Project crosses several existing transmission lines, some of which require outages in order to perform construction works. Timing and duration of outages may not align with construction schedule activities. 		<ul style="list-style-type: none"> Working closely with HONI to obtain outage coordination information and schedules. Conducting a feasibility study of a potential bypass of an existing HONI line which may mitigate this risk. NextBridge has engaged and will work with the IESO to coordinate outages.

*Change in colour level from previous Report is denoted with arrows where “↑” indicates an increase in risk and “↓” indicates a decrease in risk.

Low

Medium /
Moderate

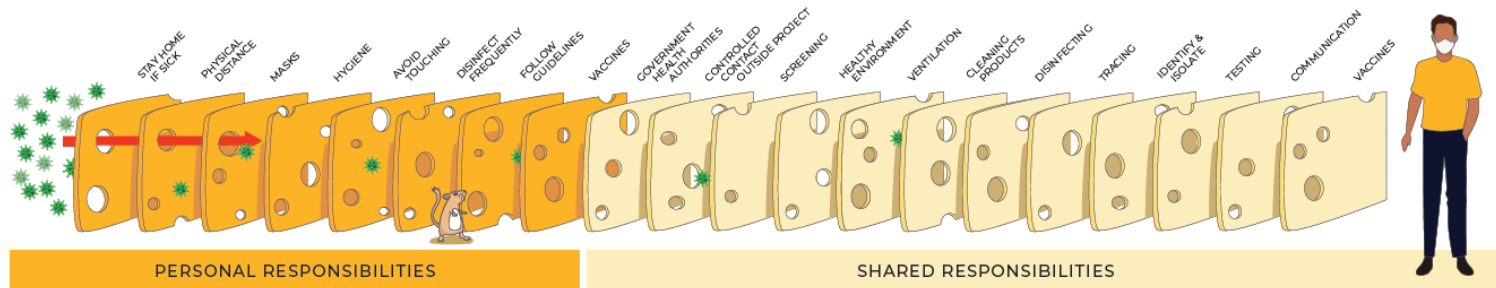
High

Unknown

5. Reference Materials

APPENDIX A - GENERAL CONTRACTOR COVID-19 RESPONSE BROCHURE

VALARD'S SWISS CHEESE COVID-19 PANDEMIC DEFENSE



Valard has provided extensive ongoing education to workers to strictly adhere to their personal responsibilities which include:

STAY HOME IF SICK

Self-isolate if sick and report it immediately. If in camp, do not leave your room and report it immediately.

PHYSICAL DISTANCE

Self isolate if sick, and report. Staying 2 meters away from anyone where possible. Avoid interaction with the public.

MASKS

Wear your masks in common spaces, vehicles, and if distancing can't be maintained. As we learn more about masks (e.g. types, material, etc.), Valard has changed ordering practices to provide workers with the best protection possible.

HYGIENE

Sanitize hands, follow proper sneeze and cough etiquette.

AVOID TOUCHING

Don't touch your face, mouth and nose.

DISINFECT FREQUENTLY

Sanitize commonly touched items, tools, vehicles, and common spaces.

FOLLOW GUIDELINES

Project, provincial, federal and best practice guidelines are followed at home & at work.

VACCINES

Workers are encouraged to get their yearly flu vaccine and any future COVID-19 vaccine.

We encourage workers to practice good COVID-19 precautions outside of work to lower our collective COVID-19 risks.

All policies and procedures are based on general and specific work environments. Here are some examples:

GOVERNMENT HEALTH AUTHORITIES

Valard has close ties with the local Health Authority and they have reviewed our COVID-19 policies/procedures. In addition, the local Health Authority and OHS Officers have visited our operations and have been impressed. If there were any noted issues, Valard was quick to correct. Valard welcomes Government Agencies visiting/inspecting our operations.

CONTROLLED CONTACT OUTSIDE PROJECT

COVID-19 transmission mitigation steps have been implemented between project personnel and external contacts.

SCREENING

Workers are screened before, on arrival and daily on site. We also deployed thermal imaging cameras to monitor the temperature of our workers.

HEALTHY ENVIRONMENT

Allow space for distancing, eliminate congested areas, lower capacity.

VENTILATION

Any facilities with forced air have been evaluated to increase air flow and will be equipped with MERV 13 or higher air filters to reduce virus transmission.

CLEANING PRODUCTS

All products are Health Canada approved and we pay extra for products that are low irritant to encourage workers to use frequently.

DISINFECTING

Rigorous cleaning and disinfectant schedules have been implemented, including the use of disinfectant electrostatic foggers that allow objects and large areas to be disinfected quickly and effectively.

TRACING

Strict tracing measures are taken for any close contact scenarios. Valard monitors issues like airline and vendor announcements regarding COVID-19 positive cases, checking to see if our workers may have been infected.

IDENTIFY & ISOLATE

Quarantine facilities and supports are available.

TESTING

Valard will have the ability to perform Polymerase Chain Reaction (PCR) COVID-19 testing which is considered the "gold standard" (i.e. most accurate) of testing and identifies if a person has active COVID-19 (i.e. symptomatic or asymptomatic). Valard will deploy testing for select site access and any close contact situations resulting from tracing.

COMMUNICATION

Continuing to educate workers on new developments, signs and symptoms.

VACCINES

Valard will work with local Health Authorities to attempt to deploy any COVID-19 vaccine that becomes available, similar to how we offered the 2020 flu vaccines to workers.

The only way to control COVID-19 is through a collective effort. We have to do this together. By collectively adhering and enforcing every COVID-19 barrier, we will keep each other, the communities in which we work and our families that we go home to, safe and healthy.



COVID-19 RESPONSE

EAST-WEST TIE TRANSMISSION LINE

SAFETY STARTS **HERE**

VALARD'S WORK AS AN ESSENTIAL SERVICE

Valard's work has been deemed an essential service across all jurisdictions. This has kept us all employed, however it also means we cannot run and hide from COVID-19.

Valard has implemented aggressive COVID-19 protocols within our operations

and has classified COVID-19 as a STKY ("Stuff That Kills You"). Because of this, every facet of Valard's Health and Safety Management System has been altered to mitigate COVID-19.

IF YOU HAVE ANY QUESTIONS OR CONCERNS, PLEASE CONTACT:

- Your Supervisor/Manager
- **Matthew Krasniuk**
Safety Admin
mkrasniuk@valard.com | 437.221.3505
- **Kim Frankland**
Safety Advisor/Admin
kfrankland@valard.com | 437.388.9051
- **Iqbal Brar**
For MB, SK & Northern Ontario
ibrar@valard.com | 204.880.2152
- **General COVID-19 Inquiries**
ewtsafetyteam@valard.com
- **Anthony Hart**
COVID-19 Safety
ahart@valard.com | 709.770.9174
- **Les Welling**
OHS Project Manager OEWT
lwelling@valard.com | 437.228.3217
- **Dean Seifried**
OHS Construction Manager OEWT
dseifried@valard.com | 780.686.7688

NO SINGLE INTERVENTION IS PERFECT AT PREVENTING SPREAD

As there is no single intervention step to effectively eliminate COVID-19 from our operations, Valard has taken a multi-barrier approach which includes robust proactive and reactive actions. This "Swiss Cheese Model" approach stacks barriers, like multiple cheese slices side by side, in which

the risk of COVID-19 is mitigated by the differing layers and types of defenses which are layered behind each other. In theory, lapses and weaknesses in one defense do not allow transmission to occur, since other defenses also exist to prevent a single point of failure.

OUR MULTI-BARRIER APPROACH

As part of our multi-barrier approach to limiting the transmission of COVID-19, we have separated accountabilities into "Personal Responsibilities" and "Shared Responsibilities". In either case, Valard provides education, monitoring, resourcing and every opportunity for workers to comply with these responsibilities and accountabilities.

All items identified in the diagram, in this brochure, have been reviewed and included in Valard's Coronavirus Management Plan that is available to all workers via Sharepoint.



Connecting People.
Powering Communities.



APPENDIX B – NOTIFICATION LETTER TO THE MECP



2200 Yonge St, Suite 1712
Toronto ON M4S 2C6 Canada

December 3, 2020

Annamaria Cross
Ministry of Environment, Conservation & Parks
77 Wellesley Street West
11th Floor, Ferguson Block
Toronto, ON
M7A 2T5

EA File No.: 03-03-03
EA Reference No.: 13136

RE: EA File No. 03-03-03, Reference No. 13136, Notification of change to the Limits of Work to address newly identified cultural and historical resources by the Pic Mobert First Nation

Dear Annamaria,

Consistent with Condition No. 10 of the Environmental Assessment for the East-West Tie Line, NextBridge Infrastructure, LP (NextBridge) is notifying the Ministry of Environment, Conservation & Parks of a minor change in the Limits of Work. This change is associated with a request to re-route the East-West Tie Line by Pic Mobert First Nation (PMFN) who were concerned about potential adverse impacts on rights during ongoing consultations related to project construction.

On January 23, 2020, PMFN identified previously unidentified cultural and historic resources in the White Lake and Nursery Lake areas associated with the East-West Tie Line. These resources included the possibility of historic burials on the island in the middle of White Lake that was a proposed location for a transmission tower. On January 29, 2020, PMFN's Chief & Council issued a formal Stop Work Order to NextBridge requesting that construction activities in the area of the newly identified cultural and historical resources immediately cease. Within 2 hours of receiving the Stop Work Order, NextBridge suspended construction activities in the area. Thereafter, NextBridge engaged in a consultation process with PMFN to understand the newly identified cultural and historic resources and to develop a mutually agreed on plan for mitigation measures. The goal of the consultation with PMFN was to refine the location of the potential impacts initially identified by the community, then develop mitigation measures to minimize disturbances and potentially explore a re-route to the East-West Tie Line. During the consultations this re-routing of the East-West Tie Line was jointly determined to be the best mitigation measure by NextBridge and PMFN. NextBridge was conscious not to alter the current design of the East-West Tie Line more than was needed to mitigate the concerns of the community while ensuring no new environmental impacts would be associated with the re-routing.

As Attachment 1 shows, the revised footprint represents approximately 4.4 ha of incremental footprint and has similar environmental features as the original route design. A desktop review of relevant Land Information Ontario (LIO) data was completed alongside on the ground preconstruction surveys to identify any additional environmentally sensitive features (ESFs). No additional ESFs were discovered through the course of the desktop study nor the surveys.



2200 Yonge St, Suite 1712
Toronto • ON • M4S 2C6 • Canada

The re-route was developed based on a comprehensive consultation process with the PMFN. On October 21, 2020, the PMFN Chief & Council approved the re-routing of the East-West Tie Line and removed the Stop Work Order on the condition that the Project adhered to the following mitigation measures:

- Regular and ongoing meetings with PMFN to work through this significant issue;
- A re-engineered and re-designed plan for the White Lake crossing that minimizes potential for impacts, eliminates the tower on the island, and ensures no construction on the island to avoid the possible disturbance of historic burials (see Attachment 1);
- Re-routing of the East-West Tie Line right-of-way on the east and west banks of White Lake, shifting the centerline approximately 140 m northwest to minimize potential impacts on cultural resources (see Attachment 1);
- Significant additional archeological studies completed in the summer/fall of 2020 with participation from PMFN;
- Following archeological studies, additional re-design of tower placements on the east and west banks of White Lake to further minimize potential impacts to cultural resources;
- Additional conditions from PMFN for construction in the White Lake area that limits clearing activities within an 80-meter buffer on either side of White Lake to only winter months when the ground is completely frozen so that low impact clearing and construction methods can be employed;
- Completion of a visual impact study to address potential concerns that the placement of towers would be seen from the community Pow Wow grounds and act as a distraction to ceremonies (which they will not);
- Conclusion of a cost capped funding agreement to ensure PMFN had adequate resources to cover costs of engagement and to retain third-party experts to provide advice on the historical presence in the area, sufficiency of mitigation measures and review of environmental data in order for the community to approve the design and lift the Stop Work Order; and
- Additional provincial permitting and approvals to support Project redesign and re-routing in the area.

This consultation process, and its associated outcomes, has resulted in some short-term construction delays of the East-West Tie Line while the crossing was re-designed, additional archeological field work was performed and additional tower components were procured. That said, this situation truly represents an example of industry and Indigenous communities collaborating to respectfully address issues and ultimately construct in their traditional territory with consent.

Please let me know if you have any questions.

Sincerely,

A handwritten signature in blue ink that reads "J. Tidmarsh".

Jennifer Tidmarsh
Project Director, NextBridge Infrastructure



2200 Yonge St, Suite 1712
Toronto • ON • M4S 2C6 • Canada

ATTACHMENT 1



APPENDIX C – INDIGENOUS COMMUNITY COVID-19 RESPONSE MEASURE NOTIFICATIONS



2020-11

COMMUNITY MEMO

Department: Office of the Chief

Date: November 23, 2020

Subject: Security Checkpoints

Prepared By: Kristy Boucher, Communications Office
& Executive Assistant Office of the Chief.

NOTICE TO COMMUNITY

In the interest of helping to prevent further spread of COVID-19 for the health of our community, staff, and the general public, Fort William First Nation (FWFN) will be moving into phase one of our security checkpoints.

Phase One – Monitoring and Surveillance Only.

- Security checkpoints will be setup at the north-end of Mission Roads.
- Road blockades will be setup at the north-end of Back Street Road; Brule Bay Road near the causeway; and north-end of Little Lake Road.
- Will operate twenty-four (24) hours a day.
- Security Officer will be required to record vehicles license plates numbers on all vehicles accessing the security checkpoint.

We would like to also take this time to remind you of the FWFN Emergency Response Call Centre. If you are in need of assistance and require additional information related to COVID-19, reach out to our call centre:

Main Phone Line: 807 698- 0415 – Active Monday to Friday, 9:00 a.m. to 4:00 p.m.

Family Support On-Call Line: 807-472-7701 – Active daily from 4:00 p.m. to 9:00 a.m., and 24 hours a day on weekends.

Email: covid19@fwfn.com – Active 24 hours a day

Information, as we receive it, is published on our website daily at www.fwfn.com and clicking on the COVID-19 Pandemic Action Plan on the home page. The Emergency Response Group meeting minutes will also be posted here to inform the community of their discussions. Alternatively, if you have access to social media, please follow us on Facebook as information is also posted there too.

Essential services will continue to be provided and the Emergency Response Team will be providing updates as they happen. I wish to thank all of the employees, especially those assisting on the front lines where ever you call home, for the tireless and important work you do.

Respectfully,

Chief Peter Collins
Fort William First Nation



**RED ROCK
INDIAN BAND**
Strength. Tradition. Empowerment.

Lake Helen Reserve #53A
P.O. Box 1030
Nipigon, Ontario P0T 2J0
Tel. (807) 887-2510
Fax (807) 887-3446
Toll Free (877) 887-2510

To Red Rock Indian Band Members and Lake Helen Community Members,

Right now we are in Tier 2 which is a Code Yellow

Chief and Council of the Red Rock Indian Band want to ensure you that we are taking all necessary steps to keep the community safe during these uncertain times including the following.

- Tier 1. Emergency Covid Measures
- Tier 2. Shelter in Place, Monitor (Code Yellow)
- Tier 3. Shelter in Place, Restrictions (Code Orange)
- Tier 4. Shut Down (Code Red)

To begin, the community of Lake Helen Reserve #53A will be under a Shelter in Place Order beginning November 24th, 2020 for no less than 4 weeks. A Shelter in Place order is a tool used to keep people indoors and is generally used by local officials during or immediately after an emergency like a natural disaster. Officials retooled this measure to help limit the spread of COVID-19 by residents to stay in their homes and to limit their travel to essential trips, like picking up groceries or receiving medical care. Conditions of the Shelter in Place Order are:

WHEREAS: The Chief and Council take the care and concern for their members very seriously and want to keep the community safe by preserving health and saving lives;

WHEREAS: First Nation communities have many vulnerable people due to high prevalence of:

- Diabetes
- Respiratory illness
- Elderly
- Autoimmune deficiencies

WHEREAS: health officials have deemed the following as appropriate measures to limit or slow down the spread of the Coronavirus (COVID-19):

- Maintain a distance of at least 2 meters from others who are not your immediate family living in the same residents
- Wash your hands for minimum of 20 seconds
- Stay in your own residence with your own family
- Do not gather in groups
- Do not travel outside Thunder Bay District

WHEREAS: The Chief and Council of the Red Rock Indian Band has issued a "Shelter in Place" order effective the 24th day of November 2020 for 4 consecutive weeks.

Thank You, Chief and Council

No. 82



Pic Mobert First Nation

UPDATE ON COVID CONDITIONS – DECEMBER 22, 2020

This will provide our citizens an update on current COVID conditions as of December 22, 2020.

Ontario is Going to a Lock-Down Effective on midnight, December 26, 2020 at 12:01 a.m.

Although the situation in our area has been improving, the virus is still circulating extensively in Ontario and each day the Province is recording well over 2,000 new cases and an increasing number of new hospitalizations and deaths.

Provincial authorities are especially worried about the possible impacts of holiday travel and gatherings, and they want to try to interrupt and slow the current high growth rates.

This lockdown includes the entire Province including all of Northern Ontario. In Northern Ontario, including Mobert, the lockdown will continue for 14 days until January 9, 2020, and then be re-evaluated.

What does this mean for Mobert residents?

Perhaps the most important new rules to remember are those around who you can and cannot interact with:

- Indoor organized public events and social gatherings are not permitted except with members of the same household
- Families should not visit any other household or allow visitors in their homes
- Individuals who live alone and single parents may consider having exclusive, close contact with another household to help reduce the negative impacts of social isolation
- Maintain two metres of physical distancing from everyone outside of your household (who you do not live with)
- Wear a face covering indoors; outdoors if physical distancing cannot be maintained; or if wearing one is required
- Avoid all non-essential travel to other communities until further notice
- Grocery stores will remain open (and you are allowed to go grocery shopping to Marathon, White River, and other area communities), although most other businesses will be closed to in person shopping, or completely closed, during the lockdown
 - Stores will be limiting the number of people allowed in at any time, so lineups may happen – please try to limit shopping trips to only one person from your household – stores may only allow one person per family in the store

We understand that this is Christmas, and it is a time that we traditionally gather with our families. However, the pandemic is continuing to make people sick and take lives and we need to continue to keep our community safe.

Please be keep yourself, your family, and your community safe by limiting contact with persons outside of your immediate household.

Please click this link for further guidelines on holiday gatherings. <doc attached>

A complete description of all the procedures can be found by clicking on this link. <doc attached>

In Mobert, our COVID by-law and all our existing rules and guidelines will remain in effect (see below for a reminder of the most recent rules and guidelines).

Our Council has entered into an agreement with the Anishinabek Police Service and the Public Prosecution Service of Canada to enforce, places charges and prosecute charges under our COVID bylaw.

If you are genuinely concerned that someone is not following the rules and putting you, your family, and the community at a serious risk, please call the Anishinabek Police Service (1 888 310 1122) and report it, or send an email to covidhelp@picmobert.ca

In addition:

- All our offices, public buildings and the gym will remain closed to the public until January 11, 2021.
- All scheduled meetings, events, workshops, etc. are cancelled until the week of January 11, 2021.
- Elementary and secondary school students will participate in remote learning from January 4-January 8, 2021 – in-person instruction will start again on January 11, 2021 for both elementary and secondary schools

The pandemic team will continue to monitor Ontario's measures over the holidays and will update as required.

As a reminder, here are some of the other measures that are currently in place for Mobert:

1. All non-essential staff who reside outside of Mobert will be working home until January 11, 2021 – essential staff will be working from home commencing January 4, and some will continue to work through the holidays
2. Any employees who are experiencing any of the symptoms associated with COVID are required to stay away from work until their symptoms resolve (this has been effect for several months now)
3. Essential service providers will be allowed to enter the community but will be subject to strict screening procedures
4. Any visits to Mobert by non-residents, including immediate family and friends, is strongly discouraged, and should be avoided if possible

5. All Mobert residents should continue to avoid all non-essential travel to Thunder Bay and outside of Northern Ontario until further notice.
 - Essential travel would include trips to attend an important medical appointment, access counselling or other similar services that you cannot complete over a video or conference call, to visit someone in your immediate family who is seriously ill (if you are can confirm that you will be allowed to visit them in hospital, etc.), to attend a funeral, and others (please consult with our Health Dept. for further guidance)
6. Persons who need to make an essential trip to Thunder Bay or outside of Northern Ontario must:
 - Contact our Health Department (Shelly Livingston, Manager) before the travel to receive instructions and guidance.
 - Provide us with information on your travel plans including departure and return dates.
 - On return, complete a COVID screening questionnaire and temperature scan; and
 - Contact the Health Manager immediately on your return for further instructions, which may include self-isolation and/or a COVID test, if precautions and conditions of travel were not followed.
7. Persons who make non-essential trips (e.g., shopping, visits) to Thunder Bay or outside of Northern Ontario will be required to self-isolate for 14 days or until such time as they have provided a negative COVID test.
8. ***No non-essential visitors from Thunder Bay or outside of Northern Ontario are permitted, and in the event of an essential visitor, non-residents must self-isolate for 14 days or until such time as they have provided a negative COVID test.***
9. All persons entering Mobert for an essential will be subjected to a full screening including completing a COVID questionnaire and temperature screening

Note – hospitals and health units have put in new rules about travelling outside of their districts:

If you are planning to go to the doctor in Marathon or Thunder Bay, you will be asked if you have travelled outside of Thunder Bay District – if you have, you will fail the COVID screening and you will not be allowed to enter.

There is a similar situation for health care facilities in the Algoma District – you will be asked if you have travelled outside of the Algoma District – therefore, if you have been in Marathon and are screened at the hospital in Wawa, then you will also fail the screening.

Patients experiencing emergencies are of course exempted, but their families will be screened and could be denied entry.

In addition to these measures, our citizens who are under a physician's care should consult with their physician on any additional measures that they should follow.

Barrick Workers Have Returned to Work

All the 300+ persons who had been placed into precautionary self-isolation have now completed their isolation with no positive results - all are now back to work. As of today, all the 7 cases attributed to Barrick are resolved and all persons are back to work. Barrick has implemented very strict rules and procedures working closely with and inspected by the Thunder Bay District Health Unit and the Ministry of Labour. All mine workers assigned to Barrick and Barminto have now returned to work and are working regular hours.

Vaccinations to Commence in Mobert in mid-late January 2021

Vaccines will be available to our community commencing in mid-late January 2021. Vaccinations will be managed by Dilco and coordinated locally by our Health Department.

We are expecting to be utilizing the Moderna vaccine, however this is not yet confirmed and depends on what is made available by Canada and/or Ontario. All our citizens will be eligible for vaccinations, except for persons under 16 years of age and expectant mothers, who health authorities have advised against vaccination at this time.

We are unsure at this time when vaccines arrive, and it seems that we will not receive enough vaccine at one time to vaccinate all our citizens – as such, there may be several clinics carried out over several weeks or even months. Each community is expected to provide a priority list as vaccines become available – as per national and provincial priorities, the first priority will be given to Elders, persons with compromised immunity/health conditions and front-line workers, including our health and social teams. Eventually, everyone will be given the opportunity to be vaccinated. It is also important to understand that each person will need to have two doses, and that the second dose will be administered 28 days after the first.

In order to manage traffic and keep everyone safe, the Health Centre will be confirming specific dates and times for individual appointments.

We are very pleased to be able to provide this service to our citizens in our community. Please watch our Facebook pages and postings in the community for more information in the new year.

Rapid Testing will be Available in January

Barrick has recently purchased a rapid testing system for COVID that will be available to Mobert. Tests will be by appointment and managed by the Health Centre. Test results will be available within an hour of the test being given and we will be using this for precautionary testing for employees and persons travelling out of the area for essential medical services. Further details will be provided as they become available.

Merry Christmas!

This will not be a normal Christmas by any means but let us celebrate the fact that our community has worked very hard to keep the virus out and our families safe. We appreciate your sacrifices and patience.

Our health and social teams did a wonderful job with the Christmas gifts and hampers this year, and we hope that this brought some relief and joy to your homes.

Merry Christmas to our beautiful citizens!

Gimaa Kwe and Council
Management and Staff
Pandemic Team
Netmizaagamig Nishnaabeg



Notification - First Local Positive Case of COVID-19

Biigtigong Nishnaabeg is committed to transparency in communicating with all community members, employees, and stakeholders during the COVID-19 pandemic. It has been confirmed that a Marathon resident has tested positive for COVID-19, and we are taking the necessary precautions to effectively manage information as a neighboring community with the health and safety of all our community members, employees, and stakeholders in mind.

What we know so far is that on November 24, 2020, it was confirmed that the town of Marathon received notification of their first positive COVID-19 test result for a resident.

We wish to advise you that Chief & Council are gathering and accessing as much information as possible to prevent any false information sharing and to assist us with a community plan for moving forward.

In an effort to minimize risk, we will be putting the following changes in place effective Thursday, November 26th until December 18th, 2020 -

- All band operations will be closed, employees will be working remotely
- The elementary and high school students will begin remote learning on Thursday, November 26th
- The daycare will be closed
- There will be minimal staff at the health center during this time

We would like to ask for your patience during this time and your understanding that as we are given information, updates will be given to our community. In the meantime, here are some ways to stay safe and limit the spread of the virus as provided from the Marathon Family Practice and the North of Superior Healthcare Group.

- Maintain physical distancing,
- Staying home if you are sick,
- Wearing a face covering when needed,
- Self-isolating when appropriate,
- Washing or sanitizing your hands frequently,
- Avoid touching your eyes, nose, and mouth and
- Disinfecting frequently touched surfaces often.

We will be increasing communication via Facebook, websites, emails and bulletin boards on key messaging on best practices and preventative measures we can all take to minimize risk. Please remember that it is every ones responsibility to do what is necessary to keep our community healthy and safe during this trying time.

Miigwetch,

Chief & Council

BIIGTIGONG NISHNAABEG

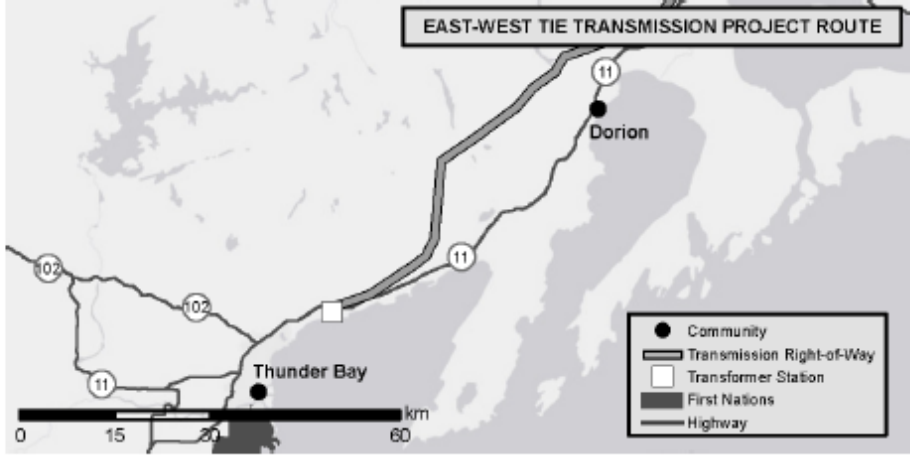
VIA HERON BAY, ONTARIO P0T 1R0 PHONE (807) 229-1749 FAX (807) 229-1944 <http://www.picriver.com>

APPENDIX D – BURN NOTICES

The Source Thunder Bay Notice

PUBLIC BURN NOTICE


As a means of ensuring that all interested communities are kept informed, Valard Construction will be conducting controlled slash pile burning during the period of **November 1, 2020 to March 31, 2021** for the clearing of the East-West Tie (EWT) Transmission Project.



The areas where the burning activity will occur are east of Thunder Bay and north of Dorion within the approved right-of-way of the EWT Transmission Project.

For information regarding this project please visit www.NextBridge.ca

NEXTBRIDGE
INFRASTRUCTURE



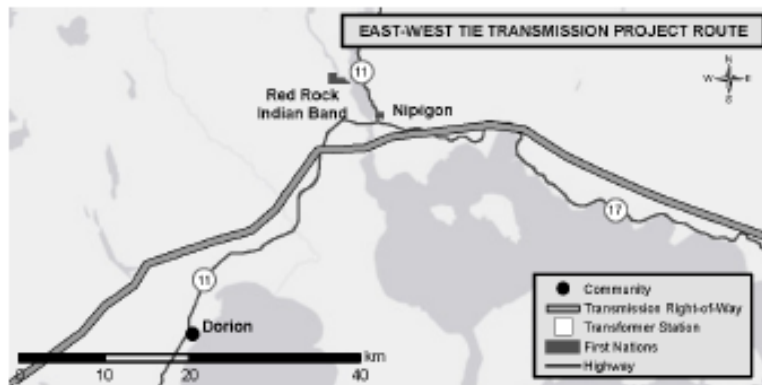
Valard

Connecting People.
Powering Communities.

Nipigon Gazette Notice

PUBLIC BURN NOTICE

As a means of ensuring that all interested communities are kept informed, Valard Construction will be conducting controlled slash pile burning during the period of **November 1, 2020 to March 31, 2021** for the clearing of the East-West Tie (EWT) Transmission Project.



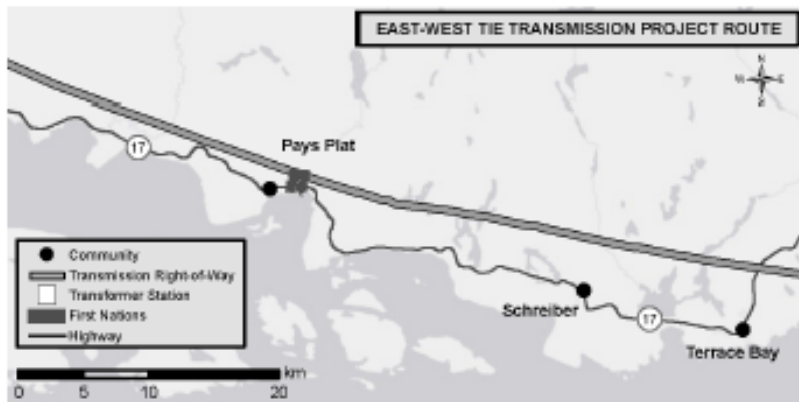
The areas where the burning activity will occur are south of Nipigon and Red Rock Indian Band within the approved right-of-way of the EWT Transmission Project.

For information regarding this project please visit
www.NextBridge.ca

Terrace Bay/Schreiber News Notice

PUBLIC BURN NOTICE

As a means of ensuring that all interested communities are kept informed, Valard Construction will be conducting controlled slash pile burning during the period of **November 1, 2020 to March 31, 2021** for the clearing of the East-West Tie (EWT) Transmission Project.



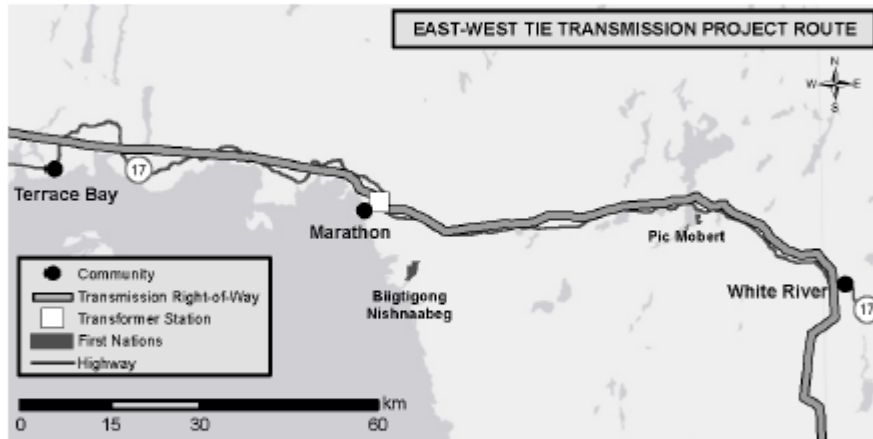
The areas where the burning activity will occur are north of Terrace Bay, Schreiber and Pays Plat within the approved right-of-way of the EWT Transmission Project.

For information regarding this project please visit
www.NextBridge.ca

Marathon Mercury Notice

PUBLIC BURN NOTICE

As a means of ensuring that all interested communities are kept informed, Valard Construction will be conducting controlled slash pile burning during the period of **November 1, 2020 to March 31, 2021** for the clearing of the East-West Tie (EWT) Transmission Project.



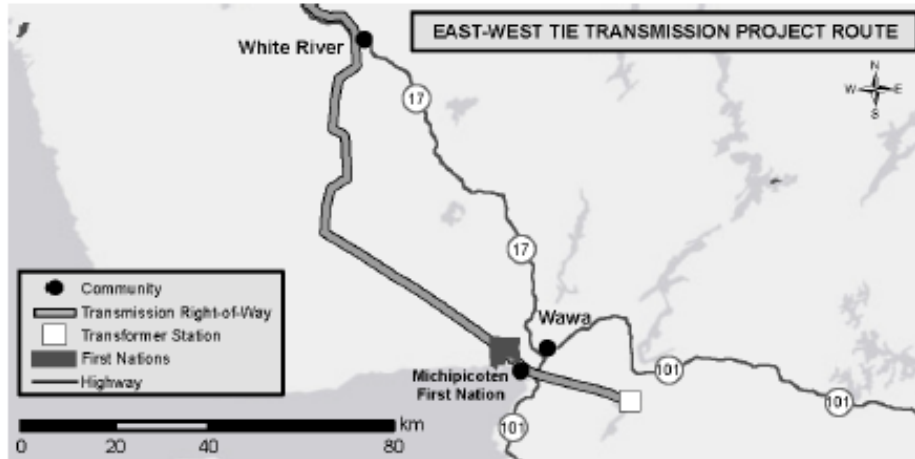
The areas where the burning activity will occur are north of Terrace Bay, north of Marathon, and west of White River within the approved right-of-way of the EWT Transmission Project.

For information regarding this project please visit www.NextBridge.ca

Algoma News Notice

PUBLIC BURN NOTICE

As a means of ensuring that all interested communities are kept informed, Valard Construction will be conducting controlled slash pile burning during the period of **November 1, 2020 to March 31, 2021** for the clearing of the East-West Tie (EWT) Transmission Project.



The areas where the burning activity will occur are southeast and northwest of Wawa and west of White River within the approved right-of-way of the EWT Transmission Project.

For information regarding this project please visit www.NextBridge.ca

APPENDIX E – PROJECT NEWSLETTER



Season's Greetings from the NextBridge Infrastructure Team!

Wishing you a safe and happy holiday season.

Project Summary

The East-West Tie is an approximately 450kilometre, double-circuit, 230 kilovolt (kV) transmission line connecting the Wawa Transformer Station to the Lakehead Transformer Station in the Municipality of Shuniah near Thunder Bay, with a connection at the Marathon Transformer Station. This infrastructure project will ensure the long-term reliability of the electricity supply in northwestern Ontario and support growth in the region for generations to come.

Construction Progress



**Information shown on map is approximate at the time of publication.*

Construction Steps



1 Right of Way Clearing



2 Foundations



3 Tower Assembly



4 Tower Erection



5 Stringing Conductors (Wires)

Construction Update

Ground broke on this vital infrastructure project in September 2019 with an official ribbon cutting ceremony taking place shortly after. The ceremony was attended by representatives of Indigenous communities nearest the project, local elected representatives and the Minister of Energy, Northern Development and Mines and Minister of Indigenous Affairs, the Hon. Greg Rickford.



Since that time, NextBridge has continued construction along the rugged north shore of Lake Superior. Due to COVID-19-induced construction delays, the in-service date has been moved to March 2022.

Staying Safe and Trail Closures

We ask those living, working or travelling in construction zones to be extra cautious as there will be increased construction traffic and possibly limited access in some areas.

Snowmobilers and trail users should respect temporary trail closures and use caution in the right-of-way and along access roads that may be used for construction and eventual operation of the transmission line.



COVID-19 Response

Your safety and that of East-West Tie workers is the priority. As the unprecedented impact of COVID-19 began to be realized, NextBridge and Valard took the responsible step of temporarily suspending construction in early April 2020 and developed a robust COVID-19 management plan in consultation with local communities and health authorities to allow construction to resume in a safe manner.

NextBridge will continue to engage with local municipalities, Indigenous communities and public health agencies as we all navigate these challenging times to ensure the ongoing health and safety of those living, working and traveling along the right-of-way.

Rate Case Filing Submitted to the Ontario Energy Board

On November 18, 2020, the Ontario Energy Board accepted our Rate Case filing for the project. The submission and supporting evidence are posted on the Ontario Energy Board website under case number EB-2020-0150. These documents are also available on the "Public Record Documents" page of the project website at www.nextbridge.ca.

Supercom, Valard and Contracting/Employment Opportunities

NextBridge is proud to have partnered with Supercom Industries LP to support the construction of the East-West Tie. Supercom is a 100% Indigenous owned limited partnership between the Indigenous communities most proximate to the project and was formed to manage procurement of materials, services and labour.

Valard was selected as the general contractor for the project and has extensive experience across North America constructing electricity transmission projects and has met the challenges posed by this project with the professionalism and expertise you would expect from such a trusted company.

NextBridge, Valard and Supercom are committed to hiring local and contracting with local companies as much as possible. To learn more, please visit www.SupercomIndustries.com for current employment and contracting opportunities. You can also sign up on the Supercom website to be notified of future opportunities.

The East-West Tie promotes economic participation by creating development opportunities for Indigenous communities:

- Approximately 50% of contract staff currently working on the project hail from Indigenous communities.
- Over 200 Indigenous community members were trained to work on the project.
- Six most proximate First Nations will purchase a 20% ownership stake in the project once completed.
- Indigenous Facilitators from each proximate community are monitoring construction work.

Our partnership with Supercom reflects our commitment to provide sustainable, long-term benefits to Indigenous communities.

Community Investment

NextBridge appreciates the important role of right-of-way communities in constructing the East-West Tie and we continue to be a supportive partner through community investment. To date, NextBridge has supported local festivals, improvements to community facilities, and supported safety and health-related initiatives in local communities.



> Project team members deliver a cheque to support the Community Centre and Fire Department in the Township of Dorion

If you have a project or initiative that supports community safety, culture or the environment in a right-of-way community, please consider applying for community investment funding. Forms and additional information can be found on the "In Your Community" page at NextBridge.ca.



This year, NextBridge donated \$10,000 to right-of-way community food banks given the increased pressures they have faced due to COVID-19.

"Thank you to the NextBridge Community Investment Fund for the generous donation, which greatly assisted us in continuing our work with those in need during this stressful time."

– Margaret Chapman,
Coordinator of the Wawa Community Food Bank.

NextBridge appreciates the support these organizations provide to communities and we were pleased to help them continue to do work under trying circumstances.



Right of Way Tour September 2020

In late August/early September of this year, while taking necessary COVID-19 precautions such as practicing social distancing and wearing face coverings, NextBridge project leaders visited partner Indigenous communities and several right-of-way municipalities for the first time since the beginning of the pandemic.

Our municipal stops included a ground-breaking at the work camp site in White River, delivery of a community investment cheque in support of Winnie's Hometown Festival, as well as community investment cheque presentations to Dorion for community center upgrades and Personal Protective Equipment for the Dorion Fire Department.

During the tour, NextBridge met with partner Indigenous communities to conclude agreements allowing the project to traverse reserve and traditional lands, participate in traditional ceremonies, and conduct right-of-way tours. It was also an opportunity to promote the meaningful participation of Indigenous communities in the project through ongoing dialogue and collaboration. The ongoing collaboration of our Indigenous partners on the project is paramount to its successful construction and operation.

NextBridge valued the opportunity to reconnect with our Indigenous and municipal partners. We thank you for hosting us in your communities and are proud to continue working with you on the project.



Ways to stay up to date and in touch

The **project website** includes up to date information and links to public record documents such as the Detailed Project Plans for each workfront and key areas.

www.NextBridge.ca

A **Facebook Group** has been established and includes timely updates on construction and other activities on the right-of-way. Search for the "NextBridge East-West Tie Line Project" Group on Facebook. Request membership and you will be added to the group.

A **community Liaison** has been assigned to respond to concerns and questions about the project. The Liaison can be reached through the established communication channels for the project, namely info@nextbridge.ca and 1-888-767-3006.