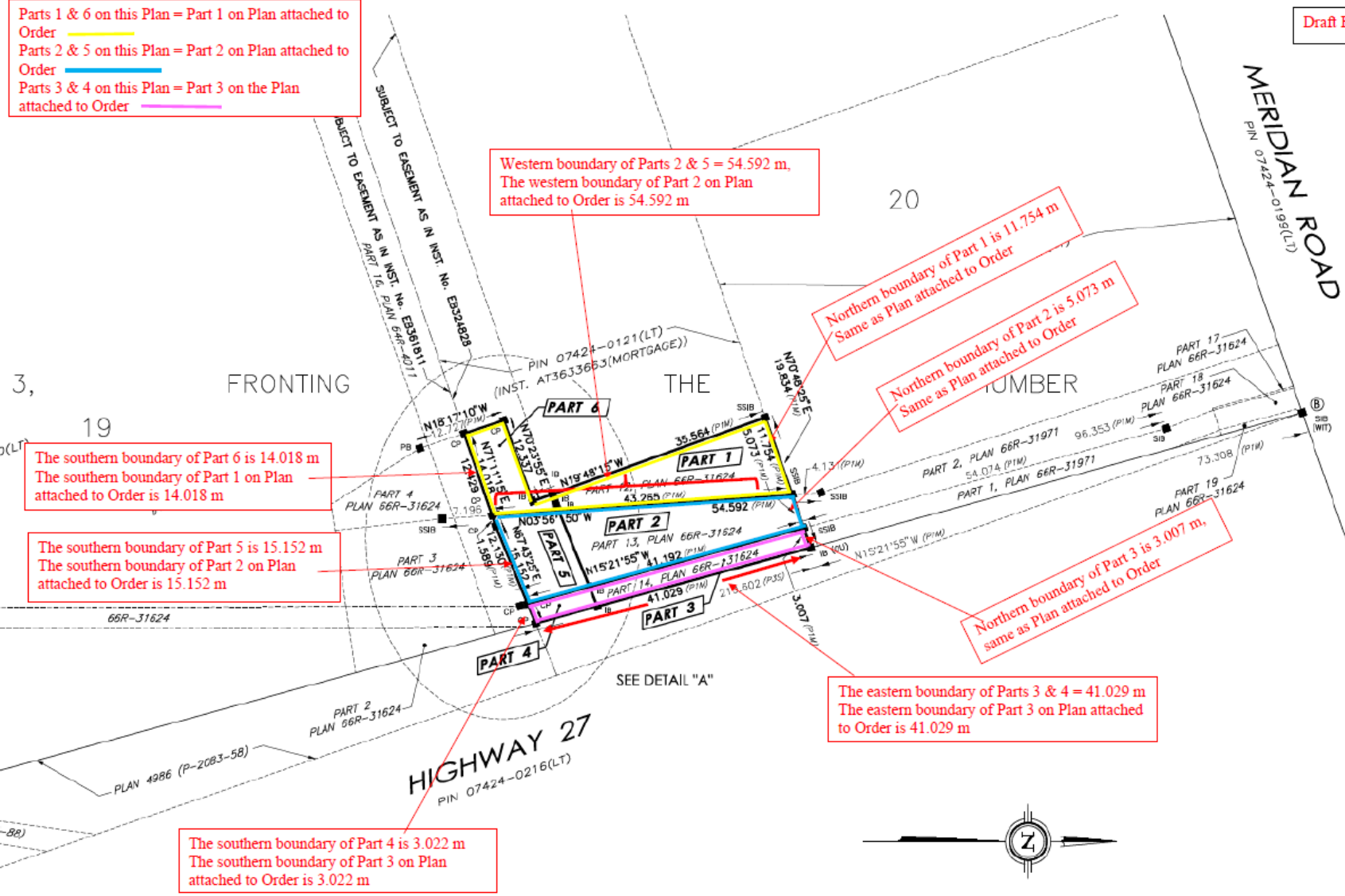


Plan attached to OEB Order

Parts 1 & 6 on this Plan = Part 1 on Plan attached to Order  
 Parts 2 & 5 on this Plan = Part 2 on Plan attached to Order  
 Parts 3 & 4 on this Plan = Part 3 on the Plan attached to Order

Draft Expropriation Plan



The southern boundary of Part 4 is 3.022 m  
 The southern boundary of Part 3 on Plan attached to Order is 3.022 m

The eastern boundary of Parts 3 & 4 = 41.029 m  
 The eastern boundary of Part 3 on Plan attached to Order is 41.029 m

Northern boundary of Part 3 is 3.007 m,  
 same as Plan attached to Order

Northern boundary of Part 2 is 5.073 m  
 Same as Plan attached to Order

Northern boundary of Part 1 is 11.754 m  
 Same as Plan attached to Order

Western boundary of Parts 2 & 5 = 54.592 m,  
 The western boundary of Part 2 on Plan attached to Order is 54.592 m

The southern boundary of Part 6 is 14.018 m  
 The southern boundary of Part 1 on Plan attached to Order is 14.018 m

The southern boundary of Part 5 is 15.152 m  
 The southern boundary of Part 2 on Plan attached to Order is 15.152 m