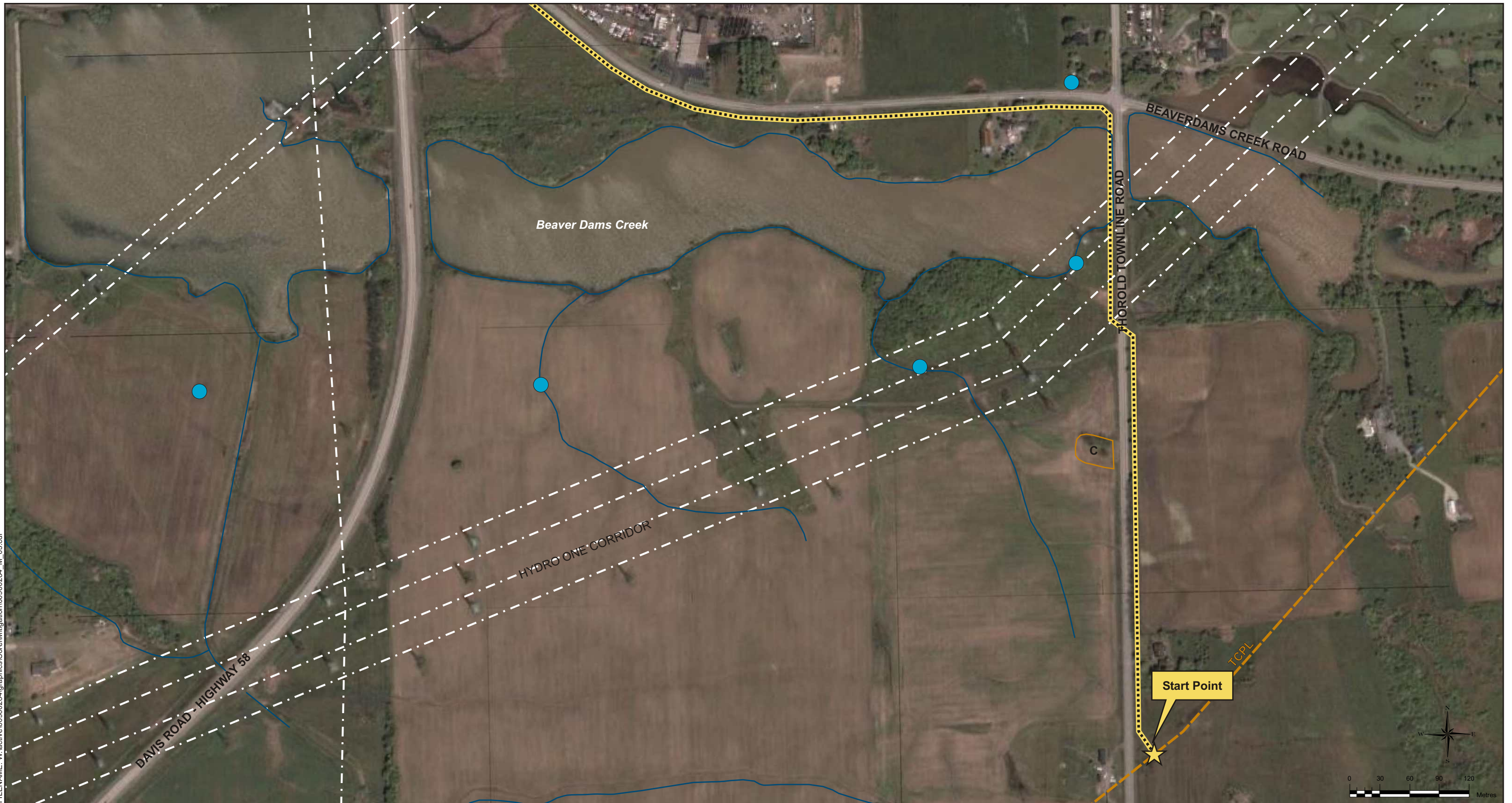


## **Appendix D**

### Photomosaics

FILENAME: W:\active\60960284\graphics\Core\Mitigation\60960284\_M\_03.cdr



Traveling within 100 m of residences and businesses. Contact landowners prior to construction to discuss pre-construction concerns. Refer to Environmental Report Section 6.3.3 Population and Institutional Facilities.

Traveling within 100 m of a water well. Potential Disturbance to water well. Consult with landowner to determine the specific location and characteristics of their water well. Refer to Environmental Report Section 6.1.5 Hydrology.

Traveling within 100 m of a water well. Potential Disturbance to water well. Consult with landowner to determine the specific location and characteristics of their water well. Refer to Environmental Report Section 6.1.5 Hydrology.

Crossing Municipal Road Thorold Townline Road. Contact road superintendent prior to crossing to discuss crossing timing and method. Refer to Environmental Report Section 6.3.2 Existing Linear Features.

Watercourse Crossing Beaver Dams Creek. Inform appropriate agencies prior to commencing crossing. Refer to Environmental Report Section 6.1.5 Hydrology, and Section 6.2.1 Watercourses and Fisheries.

Under crossing of hydroelectric transmission line. Hydro One. Contact Hydro One to discuss safety and distance requirements. Refer to Environmental Report Section 6.3.2 Existing Linear Features.



FILENAME: V:\active\60960284\graphics\Core\Mitigation\60960284\_M\_03.cdr



Traveling within 100 m of residences and businesses. Contact landowners prior to construction to discuss pre-construction concerns. Refer to Environmental Report Section 6.3.3 Population and Institutional Facilities.

Crossing of railway. CNR. Contact CNR to discuss construction methods and timing. Potential to encounter contaminated soils. Refer to Environmental Report Section 6.3.3 Population and Institutional Facilities.

Traveling within 100 m of a water well. Potential Disturbance to water well. Consult with landowner to determine the specific location and characteristics of their water well. Refer to Environmental Report Section 6.1.5 Hydrology.

Crossing Municipal Road. Niagara Falls Road. Contact road superintendent prior to crossing to discuss crossing timing and method. Refer to Environmental Report Section 6.3.2 Existing Linear Features.

Watercourse Crossing. Beaver Dams Creek. Inform appropriate agencies prior to commencing crossing. Refer to Environmental Report Section 6.1.5 Hydrology, and Section 6.2.1 Watercourses and Fisheries.

Traveling within 100 m of residences and businesses. Contact landowners prior to construction to discuss pre-construction concerns. Refer to Environmental Report Section 6.3.3 Population and Institutional Facilities.

Crossing Provincial Highway. Highway 58 (Davis Road). Contact road superintendent and MTO prior to crossing to discuss crossing timing and method. Refer to Environmental Report Section 6.3.2 Existing Linear Features.

Under crossing of hydroelectric transmission line. Hydro One. Contact Hydro One to discuss safety and distance requirements. Refer to Environmental Report Section 6.3.2 Existing Linear Features.