



RECEIVED

MAR - 5 2007

ONTARIO ENERGY BOARD

Blake, Cassels & Graydon LLP  
Barristers & Solicitors  
Patent & Trade-mark Agents  
199 Bay Street  
Suite 2800, Commerce Court West  
Toronto ON M5L 1A9 Canada  
Tel: 416-863-2400 Fax: 416-863-2653

March 5, 2007

VIA COURIER

Ontario Energy Board  
P.O. Box 2319  
27th Floor  
2300 Yonge Street  
Toronto, Ontario  
M4P 1E4

EB-2007-0034

OEB BOARD SECRETARY	
File No:	Sub File: 1
Panel:	CC, PN, BE
Licensing:	E2, RC
Other:	DC
00/04	9 HC, email

**Sharon Wong**  
Dir: 416-863-4178  
sharon.wong@blakes.com

Attention: Ms. Kirsten Walli, Board Secretary

**Re: Wolfe Island Project**

Please find enclosed 9 copies of a Single Line Drawing for the Wolfe Island Wind Project. We are submitting this for inclusion in CREC's Application at the request of Edik Zwarenstein.

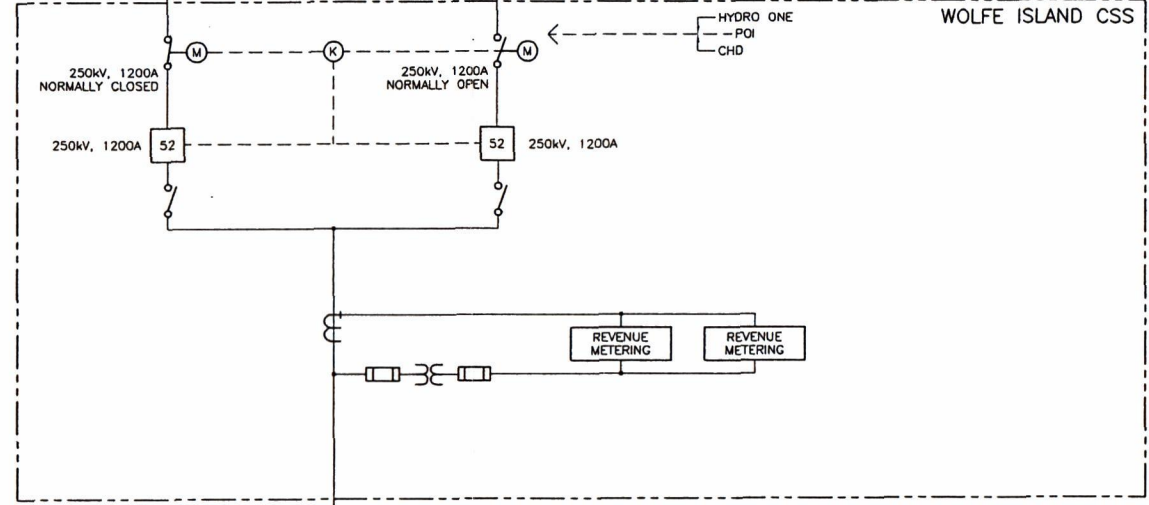
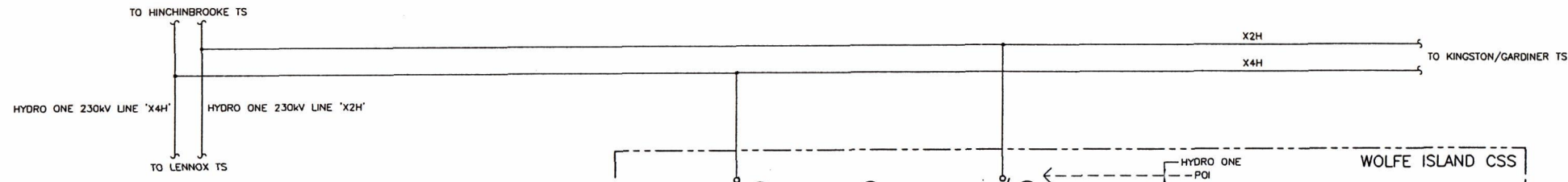
Yours truly,

on behalf of: Sharon Wong

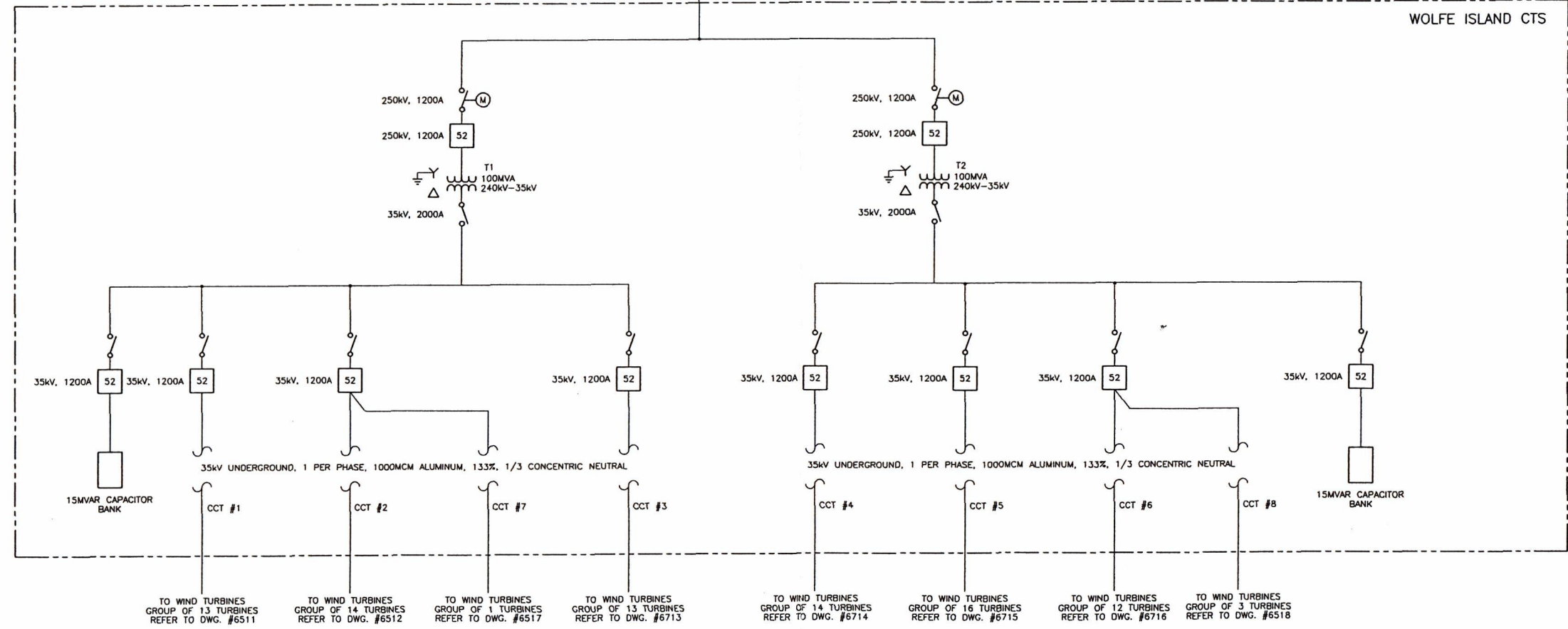
Encl.  
SW/maem

c: R. Miller  
E. Zwarenstein

21615570.1



7.6km 230kV SUBMARINE CABLE; 4.5km 230kV UNDERGROUND CABLE



TO WIND TURBINES GROUP OF 13 TURBINES REFER TO DWG. #6511  
 TO WIND TURBINES GROUP OF 14 TURBINES REFER TO DWG. #6512  
 TO WIND TURBINES GROUP OF 1 TURBINES REFER TO DWG. #6517  
 TO WIND TURBINES GROUP OF 13 TURBINES REFER TO DWG. #6713  
 TO WIND TURBINES GROUP OF 14 TURBINES REFER TO DWG. #6714  
 TO WIND TURBINES GROUP OF 16 TURBINES REFER TO DWG. #6715  
 TO WIND TURBINES GROUP OF 12 TURBINES REFER TO DWG. #6716  
 TO WIND TURBINES GROUP OF 3 TURBINES REFER TO DWG. #6518

This drawing is protected by copyright law and shall not be reproduced in any manner, or for any purpose without written permission from Canadian Hydro Developers, Inc. Approved construction drawings must be stamped, signed and dated. All drawings with previous revision date and number are void. Canadian Hydro Developers, Inc. © 2003

REV	Y	M	D	REVISION DESCRIPTION	DES	DRN	CHK
E	06	12	11	ISSUED FOR REVISION	JRP	AJD	JRK
D	06	04	25	ISSUED FOR REVIEW	JRP	AJD	JRK
C	06	04	16	ISSUED FOR REVISION	JRP	AJD	JRK
B	06	02	10	ISSUED FOR 230KV CABLE RFO'S	DRR	DRR	JRK
A	05	08	-	ISSUED FOR Rfp #2	JRP	DRR	JRK

Canadian Renewable Energy Corporation  
 A Wholly Owned Subsidiary of  
**CANADIAN HYDRO**  
 DEVELOPERS, INC.  
 CADD FILE  
 WI6510D

**CANADIAN RENEWABLE ENERGY CORP.**  
 PROJECT NAME: WOLFE ISLAND WIND PROJECT  
 TITLE: OVERALL ELECTRICAL BASIC SWITCHING SINGLE LINE DIAGRAM  
 PROJECT: 6510  
 SCALE: NTS  
 REV: E