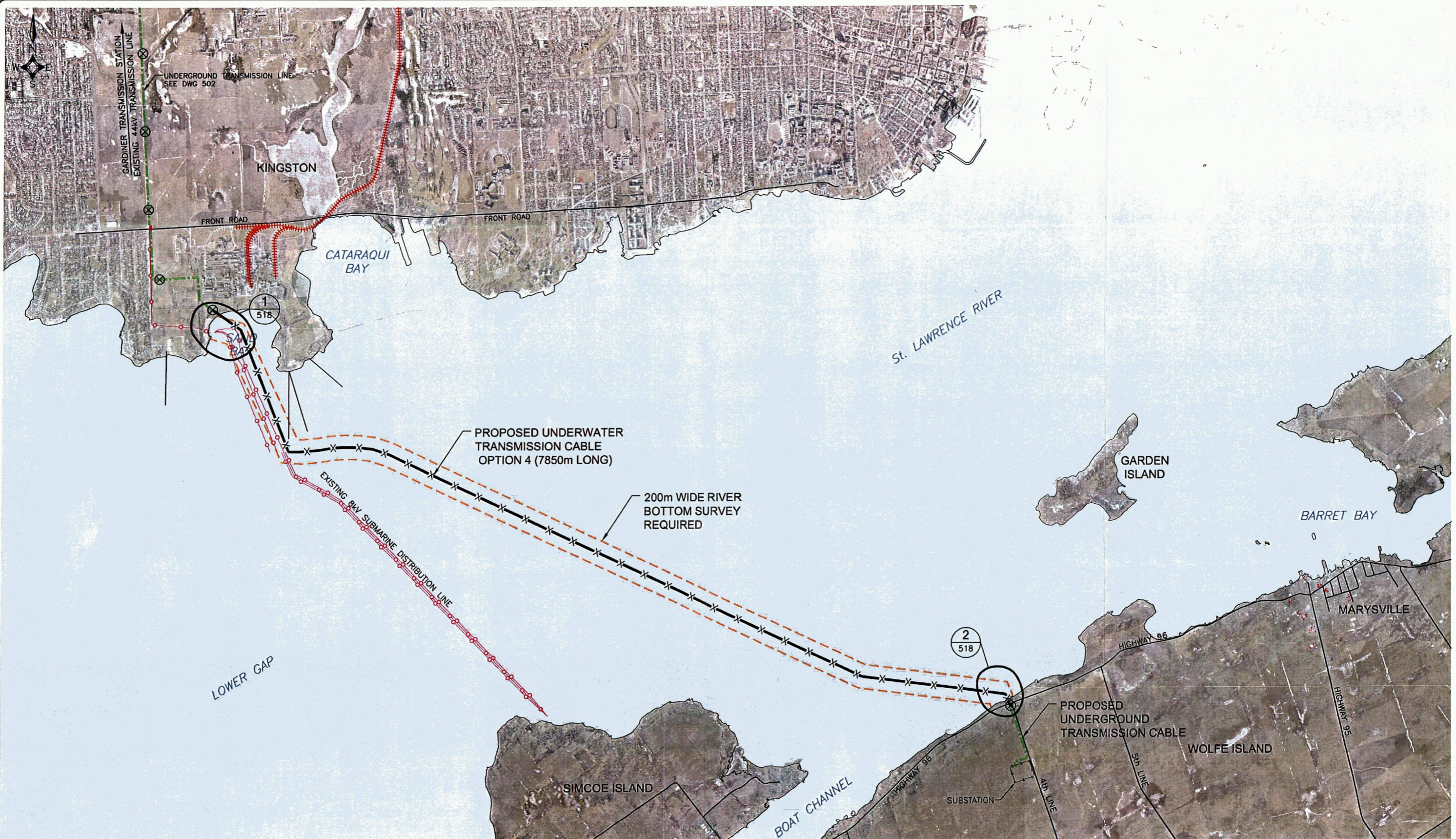


THIS DRAWING SHALL NOT BE REPRODUCED IN ANY MANNER, OR FOR ANY PURPOSE, EXCEPT BY WRITTEN PERMISSION OF CANADIAN PROJECTS LIMITED AND IS PROTECTED BY COPYRIGHT LAW. © 2009 THIS DRAWING MUST BE STAMPED, SIGNED AND DATED TO BE APPROVED FOR CONSTRUCTION. VOID ALL DIMENSIONS BEARING AN EARLIER DATE OR REVISION NUMBER.

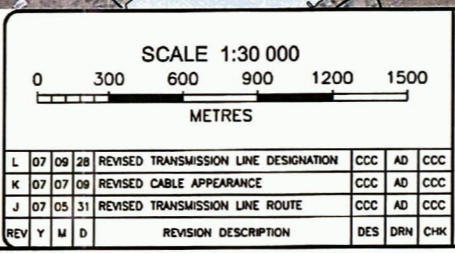


**NOTES**  
 1. ALL DIMENSIONS IN METERS UNLESS NOTED OTHERWISE.  
 2. ALL COORDINATES ARE NAD 83 ZONE 18.

**LEGEND**

	RAILWAY
	EXISTING DISTRIBUTION LINE
	EXISTING TRANSMISSION LINE
	PROPOSED SUBMARINE TRANSMISSION LINE
	PROPOSED TRENCHED TRANSMISSION LINE
	PROPOSED BORED TRANSMISSION LINE
	PROPOSED CABLE SPLICE LOCATION

PREVIOUSLY RELEASED AS DRAWING 103



<b>CANADIAN RENEWABLE ENERGY CORPORATION</b> A WHOLLY OWNED SUBSIDIARY OF CANADIAN HYDRO DEVELOPERS, INC.	
<b>WOLFE ISLAND WIND PROJECT</b>	PROJECT NUMBER <b>1032-004</b>
<b>230 kV U/G TRANSMISSION LINE</b>	CADD NUMBER <b>4.3.004</b>
<b>UNDERWATER CORRIDOR</b>	DRAWING NUMBER <b>501</b>
<b>PLAN</b>	

THIS DRAWING SHALL NOT BE REPRODUCED IN ANY MANNER, OR FOR ANY PURPOSE, EXCEPT BY WRITTEN PERMISSION OF CANADIAN PROJECTS LIMITED AND IS PROTECTED BY COPYRIGHT LAW. © 2007 THIS DRAWING MUST BE STAMPED, SIGNED AND DATED TO BE APPROVED FOR CONSTRUCTION. VOID ALL DRAWINGS BEARING AN EARLIER DATE OR REVISION NUMBER.

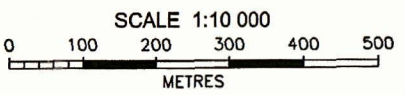


- NOTES**
1. ALL DIMENSIONS AND ELEVATIONS ARE IN METRES, UNLESS NOTED OTHERWISE.
  2. BASE MAPPING FROM LIDAR PHOTO, FLOWN JANUARY 2006.
  3. LOCATION OF EXISTING TRANSMISSION LINES TO BE FIELD CONFIRMED.

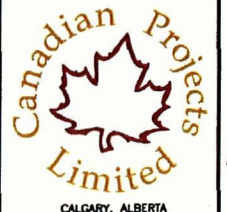
**LEGEND**

	RAILWAY		BELL COMMUNICATIONS
	EXISTING DISTRIBUTION LINE		SEWER
	EXISTING TRANSMISSION LINE		UNION GAS
	PROPOSED SUBMARINE TRANSMISSION LINE		WATER MAIN
	PROPOSED TRENCHED TRANSMISSION LINE		RIGHT OF WAY
	PROPOSED BORED TRANSMISSION LINE		PROPERTY LINE
	PROPOSED CABLE SPLICE LOCATION		CLOSED LAND FILL

	BELL COMMUNICATIONS
	SEWER
	UNION GAS
	WATER MAIN
	RIGHT OF WAY
	PROPERTY LINE
	CLOSED LAND FILL



REV	Y	M	D	REVISION DESCRIPTION	DES	DRN	CHK
N	07	09	28	REVISED TRANSMISSION LINE DESIGNATION	CCC	AD	CCC
M	07	07	09	REVISED ROAD NAMES	CCC	AD	CCC
L	07	05	30	REVISED CABLE ROUTE AND ROW	CCC	AD	CCC



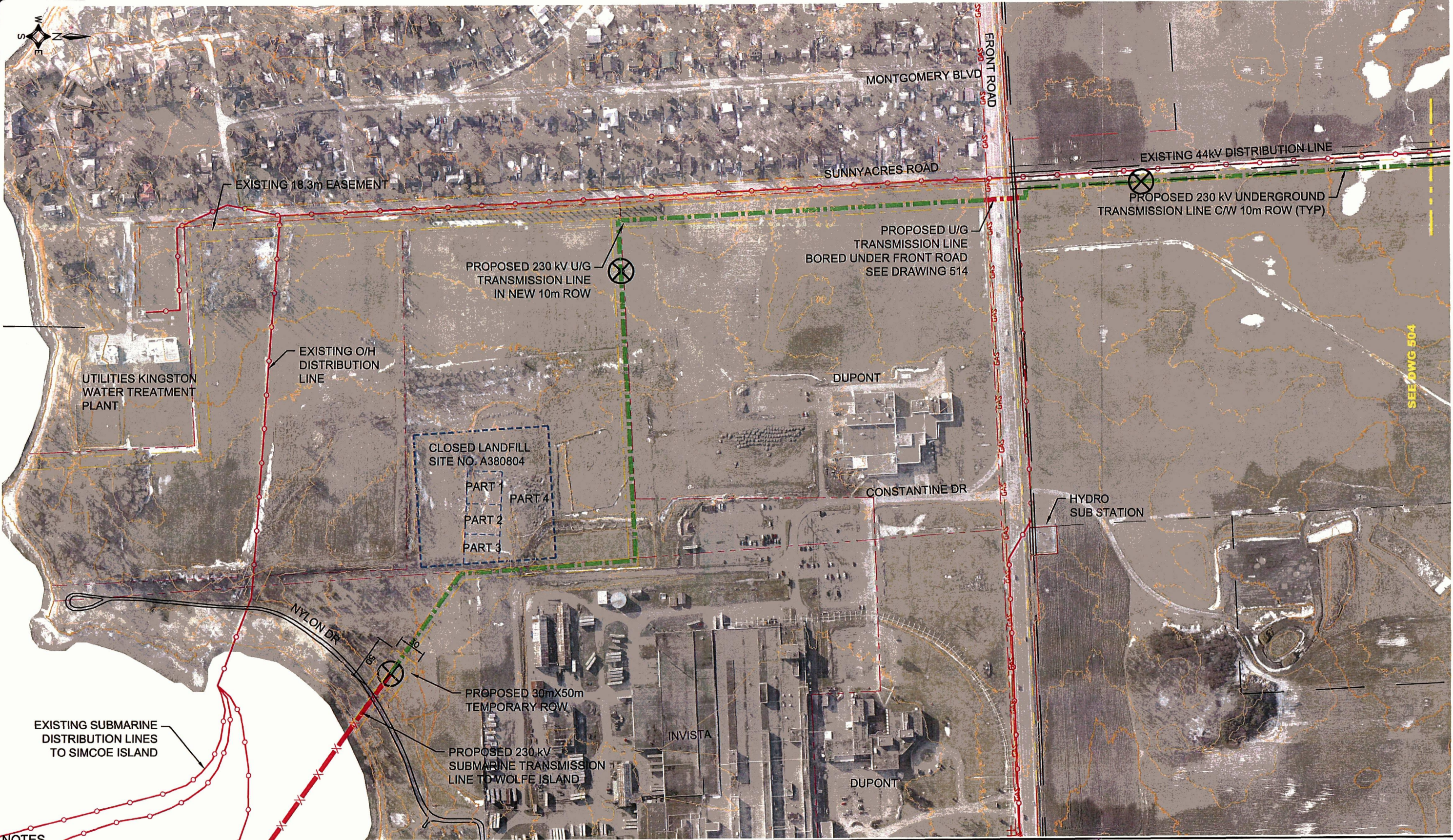
**CANADIAN RENEWABLE ENERGY CORPORATION**  
A WHOLLY OWNED SUBSIDIARY OF CANADIAN HYDRO DEVELOPERS, INC.

WOLFE ISLAND WIND PROJECT  
230 kV U/G TRANSMISSION LINE  
ROUTING  
OVERALL PLAN - MAINLAND

PROJECT NUMBER	1032-004
CADD NUMBER	4.3.007
DRAWING NUMBER	502

PREVIOUSLY RELEASED AS DRAWING 111

THIS DRAWING SHALL NOT BE REPRODUCED IN ANY MANNER, OR FOR ANY PURPOSE, EXCEPT BY WRITTEN PERMISSION OF CANADIAN PROJECTS LIMITED AND IS PROTECTED BY COPYRIGHT LAW. © 2007 THIS DRAWING MUST BE STAMPED, SIGNED AND DATED TO BE APPROVED FOR CONSTRUCTION. VOID ALL DRAWINGS BEARING AN EARLIER DATE OR REVISION NUMBER.



SEE DWG 504

- NOTES**
1. ALL DIMENSIONS AND ELEVATIONS ARE IN METRES, UNLESS NOTED OTHERWISE.
  2. BASE MAPPING FROM LIDAR PHOTO, FLOWN JANUARY 2006.
  3. LOCATION OF EXISTING TRANSMISSION LINES TO BE FIELD CONFIRMED.

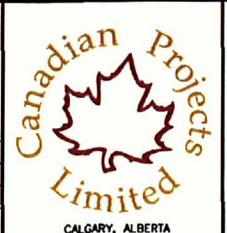
**LEGEND**

	RAILWAY		BELL COMMUNICATIONS
	EXISTING DISTRIBUTION LINE		SEWER
	EXISTING TRANSMISSION LINE		UNION GAS
	PROPOSED SUBMARINE TRANSMISSION LINE		WATER MAIN
	PROPOSED TRENCHED TRANSMISSION LINE		RIGHT OF WAY
	PROPOSED BORED TRANSMISSION LINE		PROPERTY LINE
	PROPOSED CABLE SPLICE LOCATION		CLOSED LANDFILL

SCALE 1:4000

0 40 80 120 160 200 METRES

REV	Y	M	D	REVISION DESCRIPTION	DES	DRN	CHK
M	07	09	28	REVISED TRANSMISSION LINE DESIGNATION	CCC	AD	CCC
L	07	07	09	ADDED TEMPORARY ROW AT LANDFALL	CCC	AD	CCC
K	07	06	19	ADDED CLOSED LANDFILL	CCC	AD	CCC



**CANADIAN RENEWABLE ENERGY CORPORATION**  
A WHOLLY OWNED SUBSIDIARY OF CANADIAN HYDRO DEVELOPERS, INC.

WOLFE ISLAND WIND PROJECT  
230 kV U/G TRANSMISSION LINE  
ROUTING  
PLAN 1 OF 3

PROJECT NUMBER	1032-004
CADD NUMBER	4.3.007
DRAWING NUMBER	503

PREVIOUSLY RELEASED AS DRAWING 112

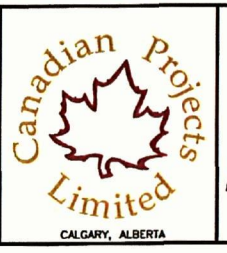
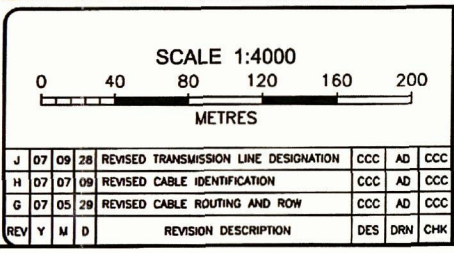
THIS DRAWING SHALL NOT BE REPRODUCED IN ANY MANNER, OR FOR ANY PURPOSE, EXCEPT BY WRITTEN PERMISSION OF CANADIAN PROJECTS LIMITED AND IS PROTECTED BY COPYRIGHT LAW. © 2007 THIS DRAWING MUST BE STAMPED, SIGNED AND DATED TO BE APPROVED FOR CONSTRUCTION. VOID ALL DRAWINGS BEARING AN EARLIER DATE OR REVISION NUMBER.



- NOTES**
1. ALL DIMENSIONS AND ELEVATIONS ARE IN METRES, UNLESS NOTED OTHERWISE.
  2. BASE MAPPING FROM LIDAR PHOTO, FLOWN JANUARY 2006.
  3. LOCATION OF EXISTING TRANSMISSION LINES TO BE FIELD CONFIRMED.

**LEGEND**

	RAILWAY		BELL COMMUNICATIONS
	EXISTING DISTRIBUTION LINE		SEWER
	EXISTING TRANSMISSION LINE		UNION GAS
	PROPOSED SUBMARINE TRANSMISSION LINE		WATER MAIN
	PROPOSED TRENCHED TRANSMISSION LINE		RIGHT OF WAY
	PROPOSED BORED TRANSMISSION LINE		PROPERTY LINE
	PROPOSED CABLE SPLICE LOCATION		



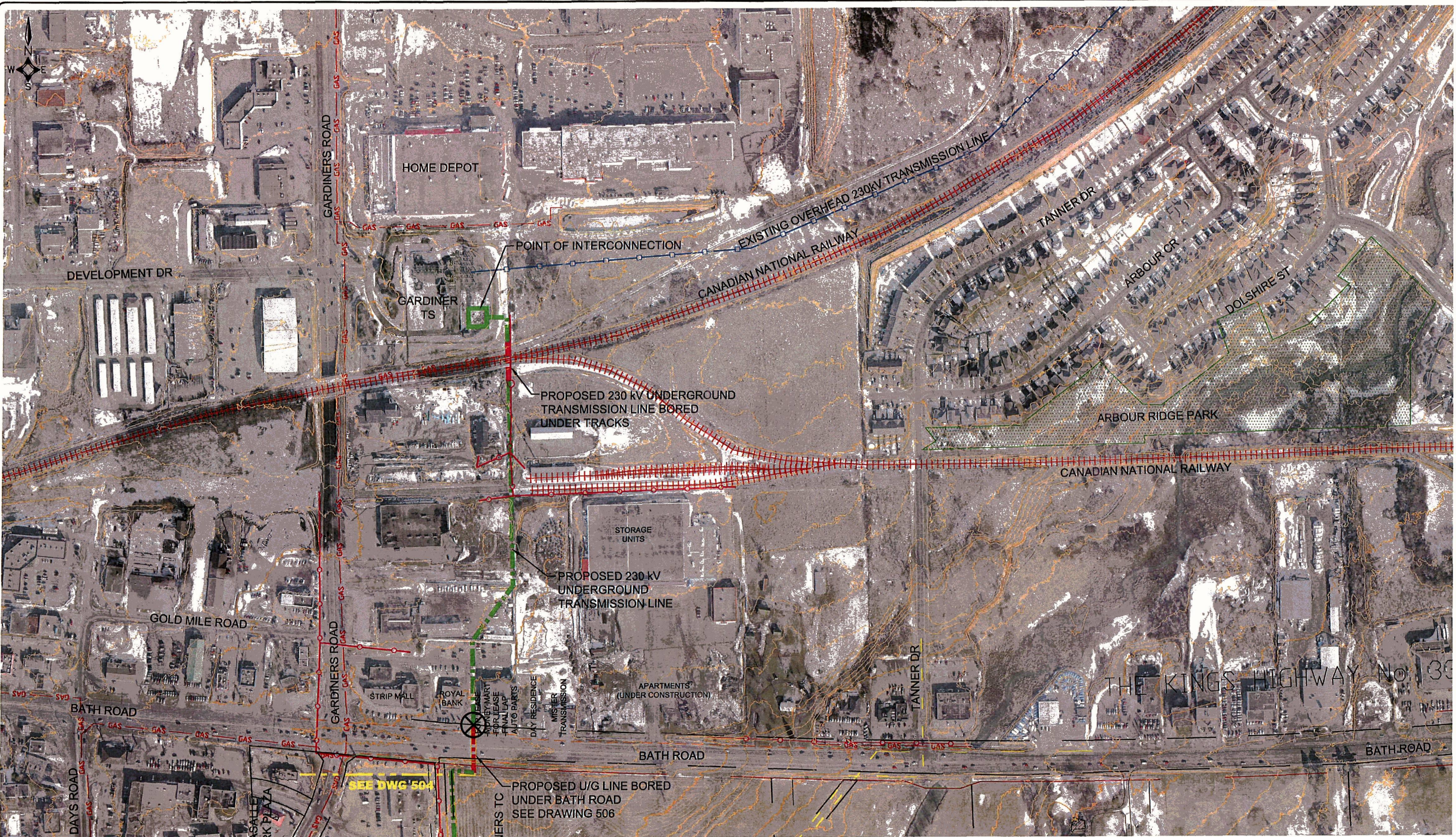
**CANADIAN RENEWABLE ENERGY CORPORATION**  
A WHOLLY OWNED SUBSIDIARY OF CANADIAN HYDRO DEVELOPERS, INC.

**WOLFE ISLAND WIND PROJECT**  
230 kV U/G TRANSMISSION LINE  
ROUTING  
PLAN 2 OF 3

PROJECT NUMBER	1032-004
CADD NUMBER	4.3.007
DRAWING NUMBER	504

PREVIOUSLY RELEASED AS DRAWING 113

THIS DRAWING SHALL NOT BE REPRODUCED IN ANY MANNER, OR FOR ANY PURPOSE, EXCEPT BY WRITTEN PERMISSION OF CANADIAN PROJECTS LIMITED AND IS PROTECTED BY COPYRIGHT LAW. © 2007 THIS DRAWING MUST BE STAMPED, SIGNED AND DATED TO BE APPROVED FOR CONSTRUCTION. VOID ALL DRAWINGS BEARING AN EARLIER DATE OR REVISION NUMBER.

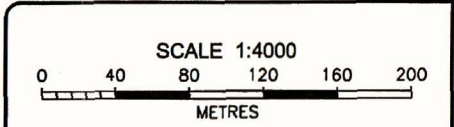


**NOTES**  
 1. ALL DIMENSIONS AND ELEVATIONS ARE IN METRES, UNLESS NOTED OTHERWISE.  
 2. BASE MAPPING FROM LIDAR PHOTO, FLOWN JANUARY 2006.  
 3. LOCATION OF EXISTING TRANSMISSION LINES TO BE FIELD CONFIRMED.

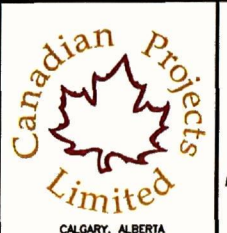
**LEGEND**

	RAILWAY		BELL COMMUNICATIONS
	EXISTING DISTRIBUTION LINE		SEWER
	EXISTING TRANSMISSION LINE		UNION GAS
	PROPOSED SUBMARINE TRANSMISSION LINE		WATER MAIN
	PROPOSED TRENCHED TRANSMISSION LINE		RIGHT OF WAY
	PROPOSED BORED TRANSMISSION LINE		PROPERTY LINE
	PROPOSED CABLE SPLICE LOCATION		

	BELL COMMUNICATIONS
	SEWER
	UNION GAS
	WATER MAIN
	RIGHT OF WAY
	PROPERTY LINE



REV	NO	DATE	REVISION DESCRIPTION	DES	DRN	CHK	
K	07	09	28	REVISED TRANSMISSION LINE DESIGNATION	CCC	AD	CCC
J	07	07	09	REVISED OVERHEAD TRANSMISSION LINE	CCC	AD	CCC
H	07	05	29	REVISED CABLE ROUTING AND ROW	CCC	AD	CCC
REV	Y	M	D	REVISION DESCRIPTION	DES	DRN	CHK



**CANADIAN RENEWABLE ENERGY CORPORATION**  
 A WHOLLY OWNED SUBSIDIARY OF CANADIAN HYDRO DEVELOPERS, INC.

WOLFE ISLAND WIND PROJECT 230 kV U/G TRANSMISSION LINE ROUTING PLAN 3 OF 3	PROJECT NUMBER 1032-004 CADD NUMBER 4.3.007 DRAWING NUMBER 505
---	---

PREVIOUSLY RELEASED AS DRAWING 115