



Enbridge Gas Inc.  
50 Keil Drive North  
Chatham, Ontario, Canada  
N7M 5M1

March 19, 2025

Ms. Nancy Marconi  
Registrar  
Ontario Energy Board  
2300 Yonge Street, 27<sup>th</sup> Floor  
Toronto, ON M4P 1E4

Dear Ms. Marconi:

**Re: Enbridge Gas Inc.  
Application for New Certificate of Public Convenience and Necessity  
City of Ottawa  
Ontario Energy Board File No. EB-2024-0339**

Pursuant to an email request dated March 14, 2025, Enbridge Gas hereby submits responses to the questions submitted by Ontario Energy Board Staff.

Should you have any questions on this submission, please do not hesitate to contact me.

Yours truly,

Patrick McMahon  
Technical Manager  
Regulatory Research and Records  
[patrick.mcmahon@enbridge.com](mailto:patrick.mcmahon@enbridge.com)  
(519) 436-5325

ENBRIDGE GAS INC.

Response to Interrogatory from  
OEB Staff

Reference: Application, page 4, para 10 and 14

Preamble:

Enbridge Gas has applied for an order of the OEB canceling and superseding its existing certificates of public convenience and necessity (certificates) related to the former municipalities that now make up the City of Ottawa and replacing them with a Certificate of Public Convenience and Necessity to construct works to supply natural gas in the current City of Ottawa.

Enbridge Gas notes that the request for the new certificate expands the geographic area currently covered by the existing certificates to include the geographic area of the former Township of Torbolton, the former Village of Stittsville and the former Village of Richmond.

Questions:

- a) Please explain the need for additional service area in the City of Ottawa (i.e. the former Township of Torbolton, the former Village of Stittsville and the former Village of Richmond). To support your response, please illustrate where Enbridge Gas has existing and planned infrastructure in the proposed additional service area. An infrastructure map is not required to be submitted.
- b) Please file an updated map of the current City of Ottawa that shows the following:
  - a. the service area covered by Enbridge Gas's existing certificates
  - b. the additional service area that will be added to Enbridge Gas's existing service area (i.e. the former Township of Torbolton, the former Village of Stittsville and the former Village of Richmond)

---

Response:

- a) The requested new Certificate of Public Convenience and Necessity (CPCN) for the City of Ottawa is intended to ensure that Enbridge Gas' CPCN rights extend to match municipal borders. This is consistent with recent CPCN decisions in which the Ontario Energy Board (OEB) has noted that issuing new CPCNs that are geographically aligned with municipal borders is consistent with the intent of the OEB that the CPCN holders update service areas if boundaries of their existing CPCNs are affected by municipal amalgamations, annexations or name changes.<sup>1</sup> This position is supported by the guidance in the Natural Gas Facilities

---

<sup>1</sup> For example, OEB Decisions and Orders issued in EB-2024-0294, EB-2023-0239 and EB-2023-0146.

Handbook<sup>2</sup> to notify the OEB of any change to municipal boundaries in order to have CPCNs amended to reflect any change.

There is also a requirement to ensure that CPCN rights are extended to areas within the City of Ottawa in which facilities have been constructed and no CPCN rights exist. Enbridge Gas currently provides service to approximately 1,175 customers in the former Township of Torbolton, approximately 1,800 customers in the former Village of Stittsville and approximately 450 customers in the former Village of Richmond.

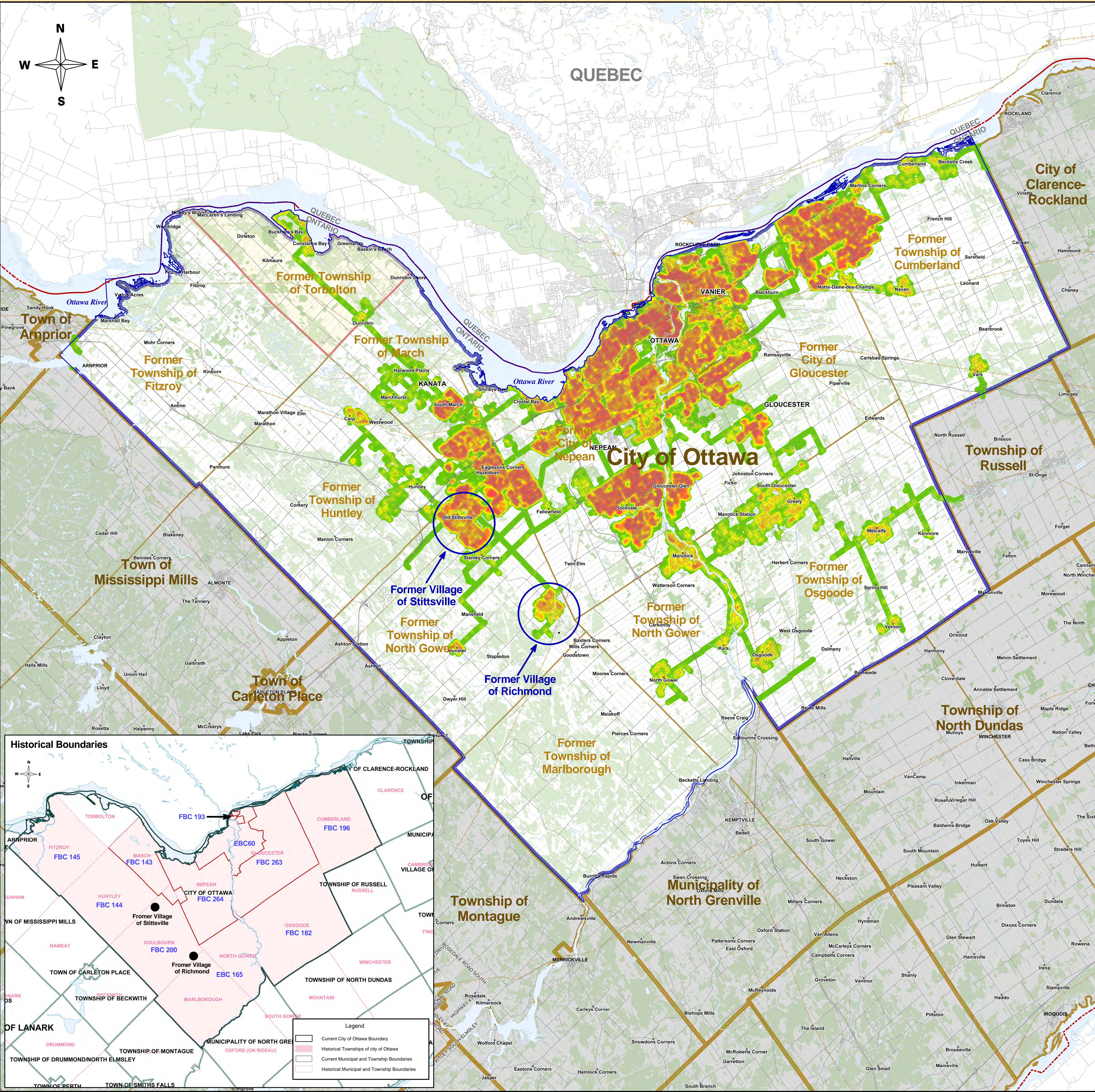
Enbridge Gas is also currently addressing additional requests for service in these areas – approximately 356 requests and inquiries for natural gas services in the former Village of Stittsville, approximately 164 requests and inquiries for natural gas services in the former Village of Richmond, and approximately 6 requests and inquiries for natural gas services in the former Township of Torbolton.

- b) Please see Attachment 1 for a customer density map which shows the location of all of the former communities that now make up the City of Ottawa. The area of the former Township of Torbolton being added to Enbridge Gas' CPCN service area has been highlighted in a different colour from the other former communities. Circle borders have been placed around best estimates of the areas associated with the former Village of Stittsville and the former Village of Richmond being added to Enbridge Gas' CPCN service area.

---

<sup>2</sup> [Natural Gas Facilities Handbook | Ontario Energy Board](#)





## City of Ottawa

### Legend

- Enbridge Gas Pipeline Coverage Area
- City of Ottawa
- Former Township of Torbolton
- Roads
- Railways
- Municipal and Township Boundaries
- First Nation Boundaries

0 4 8 12 16 20 Kilometers

**Disclaimer:**  
The map is provided with no warranty express or implied and is subject to change at any time. Any Person using the Density Map shall do so at its own Risk and the Density Map is not intended in any way As a tool to locate underground infrastructure for the purposes of excavation

